



MONACO®

DRIVING YOUR DREAM.

LAPALMA® DIESEL XL

 07





MONACO®

DRIVING YOUR DREAM.

LAPALMA® DIESEL XL

 | 07





LAPALMA® DIESEL XL

DIESEL PRESTIGE. DOWN-TO-EARTH PRICE.

Want to go diesel without going outside your budget? Go LaPalma Diesel XL for 2007. It's the quiet-riding diesel pusher you've always wanted, at a price we think will astound you — especially when you see what's inside. Beautiful new decors. Rich cabinetry with raised panel doors. Wooden slide-out fascia. And impressive options like Sirius satellite radio and the OptimaLeather™ Euro-recliner with ottoman shown here.

This year, we've given the booth dinette a new Legless Dream countertop for added legroom. And to keep you comfy on even the hottest summer days, we've beefed up the BTUs on the ducted air conditioning system. Very cool.

GALLEY. Whether you're serving up gourmet dinners or grab-and-go lunches, the kitchen has everything you'll need. You'll find a large double-door refrigerator with ice maker, a convection microwave, and a three-burner cooktop with solid surface range covers.





LAPALMA® DIESEL XL

DIESEL PRESTIGE. DOWN-TO-EARTH PRICE.

Want to go diesel without going outside your budget? Go LaPalma Diesel XL for 2007. It's the quiet-riding diesel pusher you've always wanted, at a price we think will astound you — especially when you see what's inside. Beautiful new decors. Rich cabinetry with raised panel doors. Wooden slide-out fascia. And impressive options like Sirius satellite radio and the OptimaLeather™ Euro-recliner with ottoman shown here.

This year, we've given the booth dinette a new Legless Dream countertop for added legroom. And to keep you comfy on even the hottest summer days, we've beefed up the BTUs on the ducted air conditioning system. Very cool.

GALLEY. Whether you're serving up gourmet dinners or grab-and-go lunches, the kitchen has everything you'll need. You'll find a large double-door refrigerator with ice maker, a convection microwave, and a three-burner cooktop with solid surface range covers.



LUXURY. INNOVATION. HAPPY TRAVELERS. IT ALL SAYS MONACO.

INTERIOR



Wherever you travel across America, it's easy to spot the Monaco owners. They're the ones with the smug, happy grins on their faces. And who could blame them? When you own a Monaco, you own the best. The best in luxury, performance, safety, technology and comfort. It's all here. And it's all yours for the taking. Come on, freedom lovers. Make your move to Monaco luxury. After all, you already know how to grin.



NEWPORT CHERRY COCOA BEACH

monacocoach.com

3

LUXURY. INNOVATION. HAPPY TRAVELERS. IT ALL SAYS MONACO.


INTERIOR



Wherever you travel across America, it's easy to spot the Monaco owners. They're the ones with the smug, happy grins on their faces. And who could blame them? When you own a Monaco, you own the best. The best in luxury, performance, safety, technology and comfort. It's all here. And it's all yours for the taking. Come on, freedom lovers. Make your move to Monaco luxury. After all, you already know how to grin.



NEWPORT CHERRY COCOA BEACH

A high-angle, close-up photograph of the driver's side interior of a Lapalma Diesel XL vehicle. The view is from the passenger side looking towards the driver's seat. The dashboard is a light tan color with a black steering wheel in the center. Behind the steering wheel are three analog gauges with red needles and faces, and a row of seven small, multi-colored indicator lights above them. The steering wheel has a black center hub with a silver logo. To the left of the steering wheel, on the dashboard, is a black control panel with several buttons and a red 'P' indicator. Below this panel is a small, rectangular control unit with a grid of buttons. The driver's seat is upholstered in a light tan leather with visible stitching. The background, seen through the windshield, is a blurred outdoor scene with green foliage and a dirt path.

LAPALMA® DIESEL XL

NEWPORT CHERRY | COCOA BEACH

THE WHEEL OF GOOD FORTUNE.

A close-up photograph of the side door of a vehicle, showing the silver-colored metal frame and a black rubber seal around the door opening.

LAPALMA® DIESEL XL

NEWPORT CHERRY | COCOA BEACH

THE WHEEL OF GOOD FORTUNE.





Lucky you. Here's a diesel motorcoach that's not only easy to afford, it's easy to drive. Welcome to the 2007 LaPalma Diesel XL. From the six-way power pilot seat to the easy-to-read gauges to the custom-built Roadmaster chassis, everything about this coach is designed to keep you smiling. Other driver-friendly features include a tilt/telescopic steering wheel, cruise control, power steering, and even power sunvisors.

REAR VISION SYSTEM. To help you ease into tight campground spaces, our rear vision system comes with an adjustable camera and audio so you can easily hear instructions from behind. A three-camera system is optional.

COCKPIT. Whether you're driving or parked, you'll enjoy the comfort of soft touch vinyl captain's chairs. Both seats recline and are available in optional OptimaLeather™. For your entertainment, the coach has a 24" stereo color TV, DVD player, and optional home theater system with surround sound.

STORAGE BAYS. Our roomy, lighted storage bays feature pass-through areas under the slide-outs and one-piece boxes for easy washdowns.



NO SEAMS. ADDED SAFETY.

When you're driving, you need to see everything in front of you — pedestrians, potholes, possums scurrying across the road. With our exclusive Panaview™ 1-Piece Windshield, you can. There's no annoying black rubber seam running down the middle of your windshield. It's the largest unobstructed view in the industry. That's big!

PANAVIEW™
1-PIECE WINDSHIELD





Lucky you. Here's a diesel motorcoach that's not only easy to afford, it's easy to drive. Welcome to the 2007 LaPalma Diesel XL. From the six-way power pilot seat to the easy-to-read gauges to the custom-built Roadmaster chassis, everything about this coach is designed to keep you smiling. Other driver-friendly features include a tilt/telescopic steering wheel, cruise control, power steering, and even power sunvisors.

REAR VISION SYSTEM. To help you ease into tight campground spaces, our rear vision system comes with an adjustable camera and audio so you can easily hear instructions from behind. A three-camera system is optional.

COCKPIT. Whether you're driving or parked, you'll enjoy the comfort of soft touch vinyl captain's chairs. Both seats recline and are available in optional OptimaLeather™. For your entertainment, the coach has a 24" stereo color TV, DVD player, and optional home theater system with surround sound.

STORAGE BAYS. Our roomy, lighted storage bays feature pass-through areas under the slide-outs and one-piece boxes for easy washdowns.



NO SEAMS. ADDED SAFETY.

When you're driving, you need to see everything in front of you — pedestrians, potholes, possums scurrying across the road. With our exclusive Panaview™ 1-Piece Windshield, you can. There's no annoying black rubber seam running down the middle of your windshield. It's the largest unobstructed view in the industry. That's big!



LAPALMA® DIESEL XL

When you drive away in a LaPalma Diesel XL, you can rest easy knowing we've thought of everything — right down to the smallest details. Like the toe kicks under the kitchen and bath cabinets. The wainscoting and chair rail accents. The dual pane windows with blackout day/night pleated shades. Yes, *this* is a coach that knows how to please.

It's easy to care for, too. All high-traffic areas are covered in easy-clean linoleum. The kitchen counters feature solid surface tops for long-lasting good looks. Even the fabrics are protected against stains with a powerful soil repellant. Spill a little soda on the sofa? Just wipe it clean, and you're good to go.

BEDROOM. The living is easy in the bedroom with its sumptuous queen bed with headboard, nightstands, and his and hers light switches. Across from the bed is a 20" color TV with remote. As an added bonus, the TV is wired to the cockpit DVD player so you can even watch movies in bed.

BATHROOM. You won't feel cramped in the roomy one-piece fiberglass shower with built-in seat. The shower has a glass door and satin nickel slide bar, allowing you to adjust the height of the shower head. Other bathroom amenities include a tinted skylight, vanity lights, and a decorative backsplash behind the sink.

HIDE-A-BED. In place of the jackknife sofa, you can choose an optional hide-a-bed sofa that comfortably sleeps two overnight guests. The hide-a-bed features an adjustable air mattress that lets you select your own level of comfort.



LAPALMA® DIESEL XL

When you drive away in a LaPalma Diesel XL, you can rest easy knowing we've thought of everything — right down to the smallest details. Like the toe kicks under the kitchen and bath cabinets. The wainscoting and chair rail accents. The dual pane windows with blackout day/night pleated shades. Yes, *this* is a coach that knows how to please.

It's easy to care for, too. All high-traffic areas are covered in easy-clean linoleum. The kitchen counters feature solid surface tops for long-lasting good looks. Even the fabrics are protected against stains with a powerful soil repellent. Spill a little soda on the sofa? Just wipe it clean, and you're good to go.

BEDROOM. The living is easy in the bedroom with its sumptuous queen bed with headboard, nightstands, and his and hers light switches. Across from the bed is a 20" color TV with remote. As an added bonus, the TV is wired to the cockpit DVD player so you can even watch movies in bed.

BATHROOM. You won't feel cramped in the roomy one-piece fiberglass shower with built-in seat. The shower has a glass door and satin nickel slide bar, allowing you to adjust the height of the shower head. Other bathroom amenities include a tinted skylight, vanity lights, and a decorative backsplash behind the sink.

HIDE-A-BED. In place of the jackknife sofa, you can choose an optional hide-a-bed sofa that comfortably sleeps two overnight guests. The hide-a-bed features an adjustable air mattress that lets you select your own level of comfort.



BEDROOM/INTERIOR



COCOA BEACH

NEWPORT CHERRY

REST EASY. IT'S A MONACO.



BEDROOM/INTERIOR



COCOA BEACH

NEWPORT CHERRY

REST EASY. IT'S A MONACO.

LAPALMA® DIESEL XL



ROADMASTER RSR RAILS CHASSIS

The new LaPalma Diesel XL features a smooth-handling Roadmaster RSR Rail chassis with a 325 AD HP Cummins® diesel engine that's mounted in the rear for a truly quiet ride. Unlike other motorhomes that use outriggers to hang the walls and storage compartments, our exclusive SmartStructure II truss system is integrated with the chassis rails to provide a more solid platform. The floor and storage bays are all one piece, and the truss system works with the chassis rails to channel weight toward the center of the motorhome for greater strength, more stability and better weight distribution.

- 1** The steel cage cockpit gives the Roadmaster chassis incomparable strength and safety at the front of the coach.
- 2** Every Roadmaster chassis features a steel firewall for added protection in the cockpit.
- 3** The Allison® 1000 MH 6-speed transmission features a push-button shift pad.
- 4** A 4,000 lb. hitch receiver with dual connector, 4-pin or 7-pin, is pre-wired for a supplemental braking system that works with your tow vehicle.
- 5** Radial tires (255/70R/22.5) let you drive with peace of mind.

MAY WE BUILD YOU A CHASSIS?

Did you know that every Roadmaster chassis is custom designed and built for the Monaco coach that will ride on it? It's a novel idea, but our owners seem to like it. And it pays off — in better performance, safety and reliability. Owners also like the fact that Roadmaster, a division of

Monaco Coach Corporation, only does one thing: They build chassis for motorhomes. Not trucks. Not buses. Just motorhomes. So naturally, they do it better. No wonder Roadmaster is the leading high-end diesel chassis manufacturer in America.

LAPALMA® DIESEL XL



Roadmaster
Chassis

ROADMASTER
RSR RAILS CHASSIS

The new LaPalma Diesel XL features a smooth-handling Roadmaster RSR Rail chassis with a 325 AD HP Cummins® diesel engine that's mounted in the rear for a truly quiet ride. Unlike other motorhomes that use outriggers to hang the walls and storage compartments, our exclusive SmartStructure II truss system is integrated with the chassis rails to provide a more solid platform. The floor and storage bays are all one piece, and the truss system works with the chassis rails to channel weight toward the center of the motorhome for greater strength, more stability and better weight distribution.

- 1** The steel cage cockpit gives the Roadmaster chassis incomparable strength and safety at the front of the coach.
- 2** Every Roadmaster chassis features a steel firewall for added protection in the cockpit.
- 3** The Allison® 1000 MH 6-speed transmission features a push-button shift pad.
- 4** A 4,000 lb. hitch receiver with dual connector, 4-pin or 7-pin, is pre-wired for a supplemental braking system that works with your tow vehicle.
- 5** Radial tires (255/70R/22.5) let you drive with peace of mind.

MAY WE BUILD YOU A CHASSIS?

Did you know that every Roadmaster chassis is custom designed and built for the Monaco coach that will ride on it? It's a novel idea, but our owners seem to like it. And it pays off — in better performance, safety and reliability. Owners also like the fact that Roadmaster, a division of

Monaco Coach Corporation, only does one thing: They build chassis for motorhomes. Not trucks. Not buses. Just motorhomes. So naturally, they do it better. No wonder Roadmaster is the leading high-end diesel chassis manufacturer in America.

CUMMINS® ISB-AD 325 HP:

This rear-mounted, low-torque engine gives you added muscle when you need it most. It delivers 610 lbs./ft. torque and comes with an Allison® 1000 MH 6-speed transmission featuring push-button shift pad.



SLIDE-OUT CONSTRUCTION:

When you purchase a Monaco Coach, you can be sure the slide-out boxes are some of the strongest and most reliable you'll find anywhere. They feature our exclusive multi-layer construction to give you maximum insulation and to reduce the chance of warping, twisting or shifting.



CONSTRUCTION



9-LAYER ROOF CONSTRUCTION:

(top to bottom)

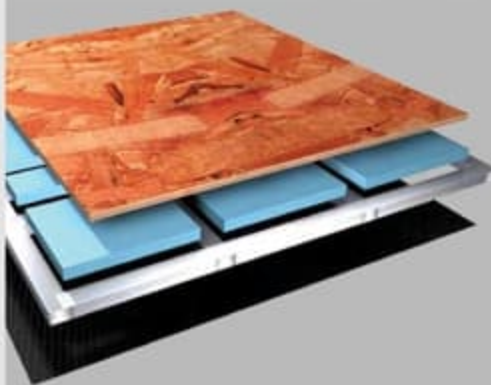
- One-piece peaked fiberglass roof
- Luaun backing
- Thick, tapered bead foam insulation
- Aluminum double I-beam superstructure filled with fiberglass insulation
- Vapor barrier
- Structure foam: thermal insulative barrier
- 1/2" bead foam insulation
- Foam padding for extra insulation
- Padded vinyl ceiling



5-LAYER SIDEWALL CONSTRUCTION:

(left to right)

- Smooth gel coat fiberglass
- Interlocking C-Channel filled with 1-1/2" fiberglass insulation bonded in place so it doesn't sag or leave spaces uninsulated
- Vapor barrier
- Bead foam adds comfort, saves energy and provides a thermal insulative barrier
- Interior paneling



4-LAYER FLOOR CONSTRUCTION:

(top to bottom)

- Structurwood™
- Blue foam insulation
- 1-1/2" aluminum tube
- Three-ply poly underbelly



ASSISTANCE

SALES • TECH • ROADSIDE

1-877-4MONACO

WE'RE HERE. ANYTIME, EVERY TIME.

- Reach us anytime — literally — via our live customer support line.
- Drive in to one of our 350 Service Centers.
- Enjoy the first year free when you enroll in our Owner Advantage Roadside Assistance Program.
- See where it all begins with a tour of one of our facilities in Indiana or Oregon. Call 1-800-650-7337 or 1-800-634-0855 to find out more.

CUMMINS® ISB-AD 325 HP:

This rear-mounted, low-torque engine gives you added muscle when you need it most. It delivers 610 lbs./ft. torque and comes with an Allison® 1000 MH 6-speed transmission featuring push-button shift pad.



SLIDE-OUT CONSTRUCTION:

When you purchase a Monaco Coach, you can be sure the slide-out boxes are some of the strongest and most reliable you'll find anywhere. They feature our exclusive multi-layer construction to give you maximum insulation and to reduce the chance of warping, twisting or shifting.

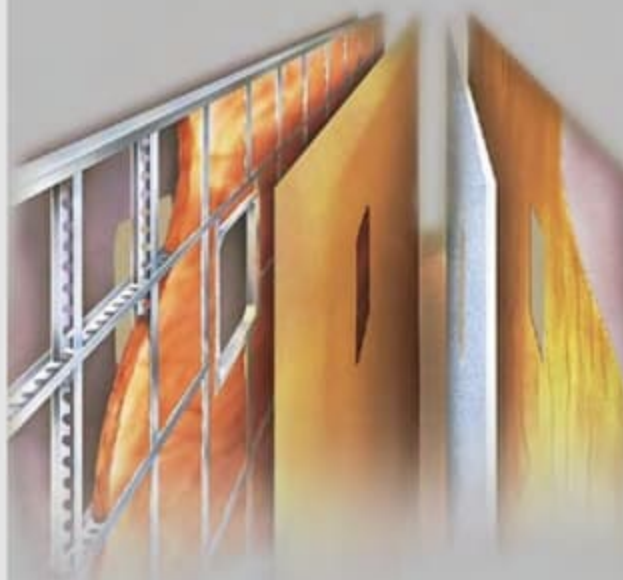


CONSTRUCTION



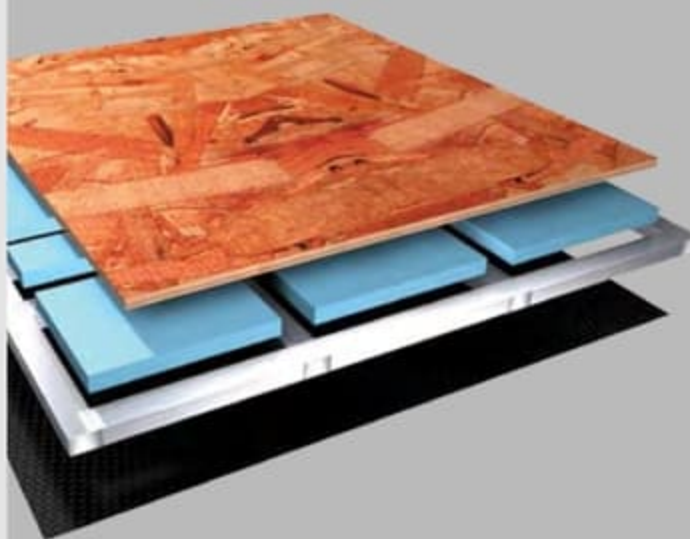
9-LAYER ROOF CONSTRUCTION: (top to bottom)

- One-piece peaked fiberglass roof
- Luaun backing
- Thick, tapered bead foam insulation
- Aluminum double I-beam superstructure filled with fiberglass insulation
- Vapor barrier
- Structure foam: thermal insulative barrier
- 1/2" bead foam insulation
- Foam padding for extra insulation
- Padded vinyl ceiling



5-LAYER SIDEWALL CONSTRUCTION: (left to right)

- Smooth gel coat fiberglass
- Interlocking C-Channel filled with 1-1/2" fiberglass insulation bonded in place so it doesn't sag or leave spaces uninsulated
- Vapor barrier
- Bead foam adds comfort, saves energy and provides a thermal insulative barrier
- Interior paneling



4-LAYER FLOOR CONSTRUCTION: (top to bottom)

- Structurwood™
- Blue foam insulation
- 1-1/2" aluminum tube
- Three-ply poly underbelly



SALES • TECH • ROADSIDE

1-877-4MONACO

WE'RE HERE. ANYTIME, EVERY TIME.

- Reach us anytime — literally — via our live customer support line.
- Drive in to one of our 350 Service Centers.
- Enjoy the first year free when you enroll in our Owner Advantage Roadside Assistance Program.
- See where it all begins with a tour of one of our facilities in Indiana or Oregon. Call 1-800-650-7337 or 1-800-634-0855 to find out more.

NEW VINTAGE OAK



NEWPORT CHERRY



CHAMPAGNE SELECT



WHICH WAY WILL YOU GO?

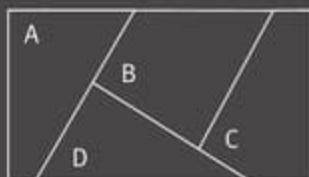
We know you love choices. That's why our designers give you so many tempting options. From mild to wild, discriminating to daring, Monaco offers lots of fun ways to go.



COCOA BEACH



Carpet A
Dinette B
Sofa C
Bedsread D



Better Stain Protection

Manufactured in, not added on. For added protection against stains, soil repellent is applied to virtually all upholstery fabric during the finishing process for superior coverage.*



* Brand and application of upholstery fabric protection may vary depending on date recreational vehicle was manufactured.

Note: Colors depicted are a reasonable representation though they may not be an exact match of the actual colors due to variances in processing and production. See your dealer for actual fabric and paint chip samples.

ONYX II



NEW VINTAGE OAK



NEWPORT CHERRY



CHAMPAGNE SELECT

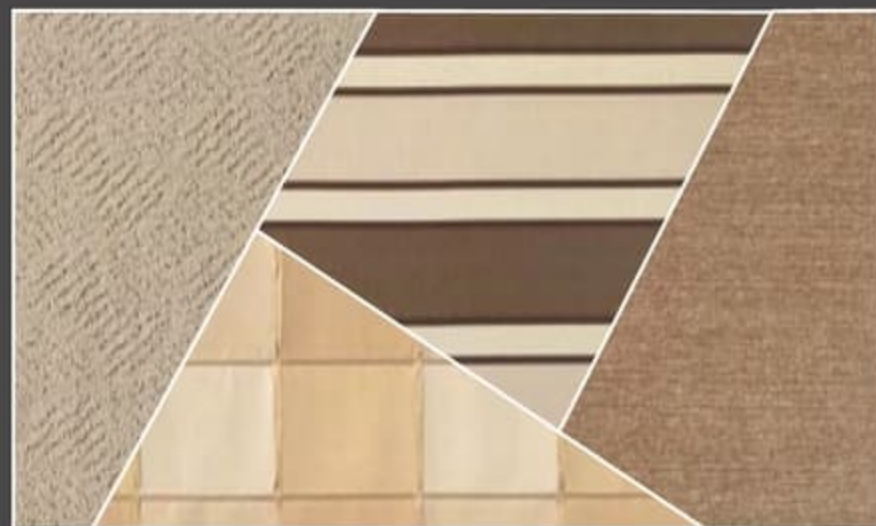


WHICH WAY WILL YOU GO?

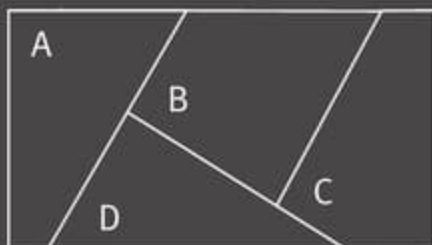
We know you love choices. That's why our designers give you so many tempting options. From mild to wild, discriminating to daring, Monaco offers lots of fun ways to go.



COCOA BEACH



Carpet A
Dinette B
Sofa C
Bedspread D



Better Stain Protection

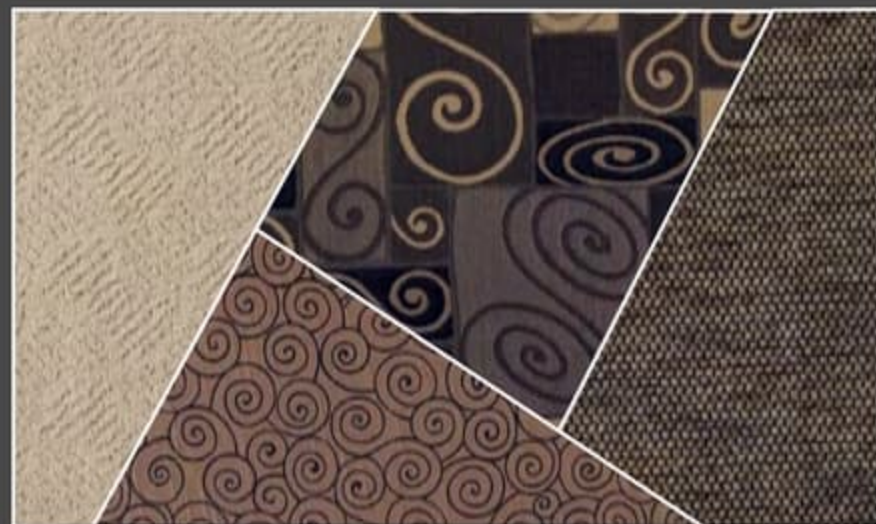
Manufactured in, not added on. For added protection against stains, soil repellent is applied to virtually all upholstery fabric during the finishing process for superior coverage.*

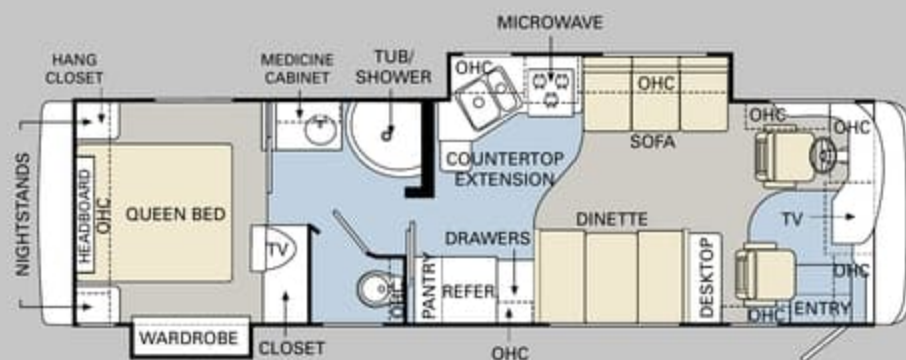
* Brand and application of upholstery fabric protection may vary depending on date recreational vehicle was manufactured.



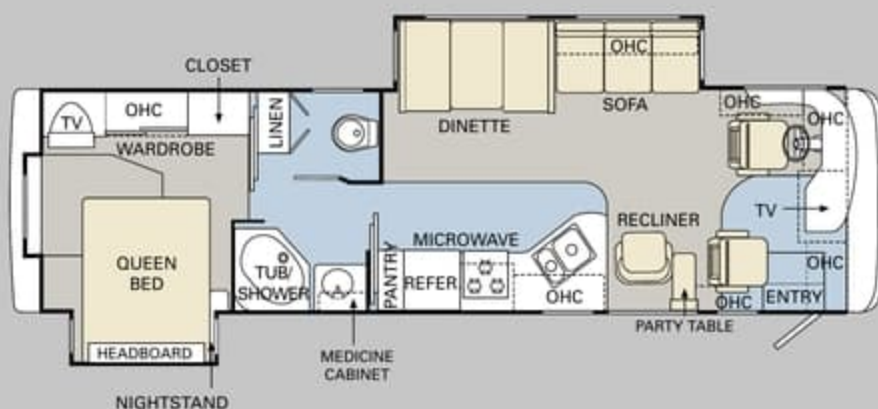
Note: Colors depicted are a reasonable representation though they may not be an exact match of the actual colors due to variances in processing and production. See your dealer for actual fabric and paint chip samples.

ONYX II

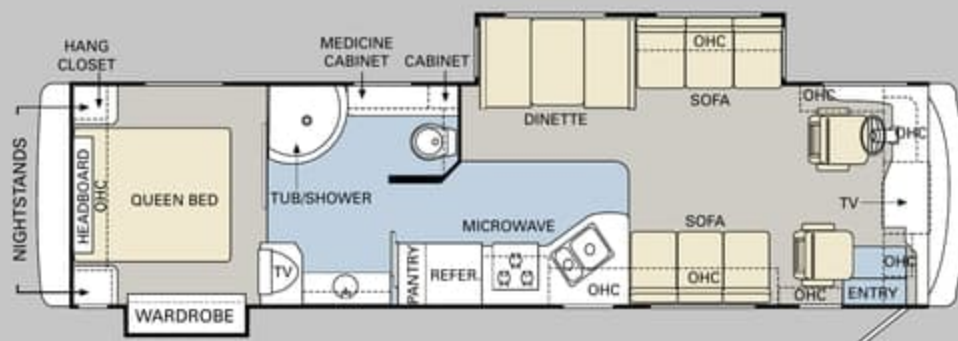




34PWD



34PDD



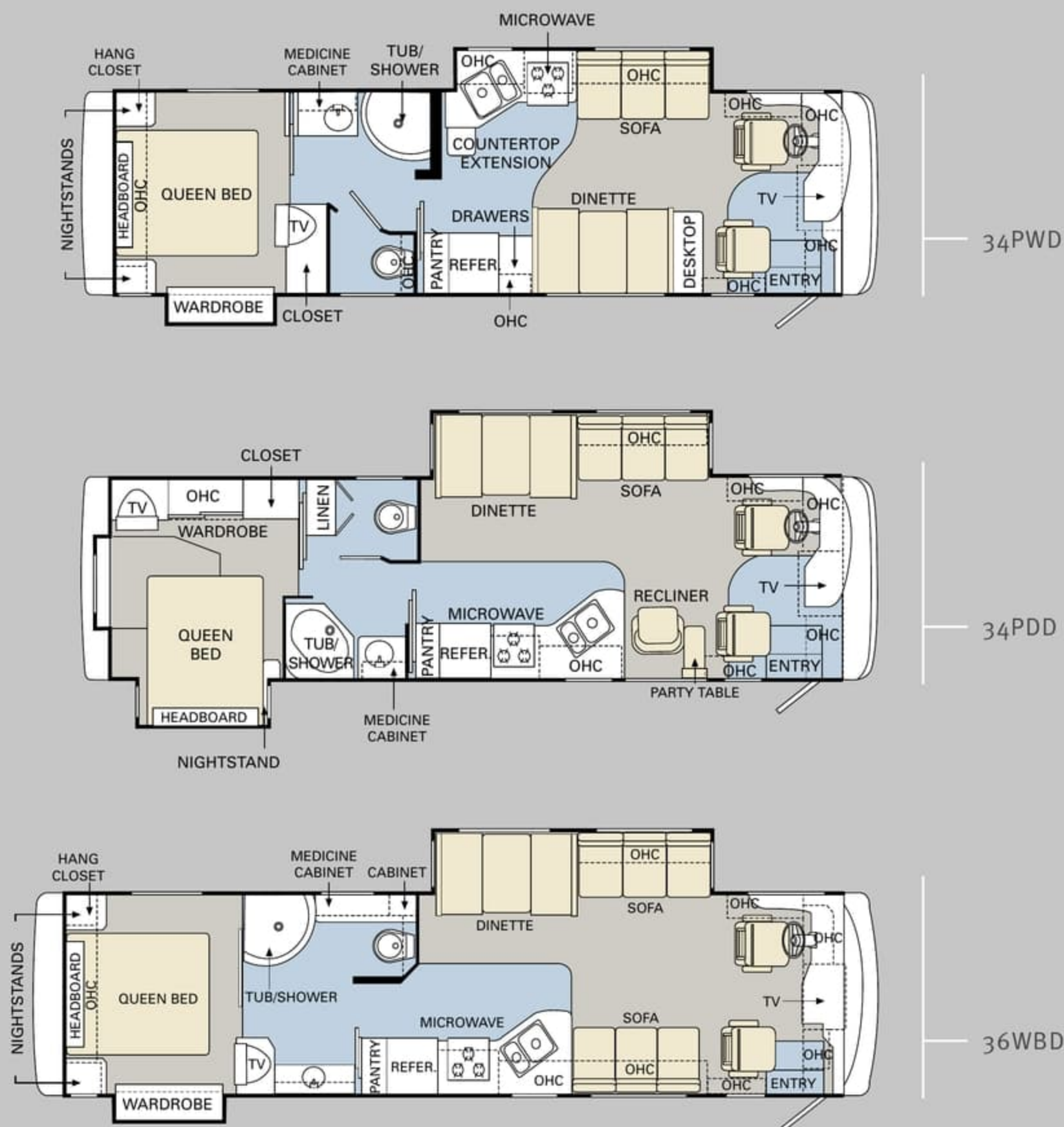
36WBD

Ready to choose? The all-new 2007 LaPalma Diesel XL is available in your choice of three beautiful floorplans from 34 to 36 feet, with double slide-outs. No matter which one you choose, you'll enjoy maximum living space, easy-to-reach storage, and Monaco quality throughout.

FURNITURE OPTIONS:

- Roadside Fabric Hide-A-Bed Sofa with Air Mattress and Two Pillows (N/A with Booth Dinette 34PWD)
- OptimaLeather™ Euro-Recliner Chair with Ottoman IPO Fabric Swivel Glider Barrel Chair (34PDD)
- Curbside: One OptimaLeather™ Euro-Recliner Chair with Ottoman with Wall-Mounted Table IPO Jackknife Sofa (36WBD)
- Freestanding Dinette with Two Freestanding Chairs and Two Folding Chairs
- Two OptimaLeather™ Euro-Recliner Chairs with Ottoman and Center Table IPO Booth Dinette (34PWD)

■ TILE ■ CARPET



Ready to choose? The all-new 2007 LaPalma Diesel XL is available in your choice of three beautiful floorplans from 34 to 36 feet, with double slide-outs. No matter which one you choose, you'll enjoy maximum living space, easy-to-reach storage, and Monaco quality throughout.

FURNITURE OPTIONS:

- Roadside Fabric Hide-A-Bed Sofa with Air Mattress and Two Pillows (N/A with Booth Dinette 34PWD)
- OptimaLeather™ Euro-Recliner Chair with Ottoman IPO Fabric Swivel Glider Barrel Chair (34PDD)
- Curbside: One OptimaLeather™ Euro-Recliner Chair with Ottoman with Wall-Mounted Table IPO Jackknife Sofa (36WBD)
- Freestanding Dinette with Two Freestanding Chairs and Two Folding Chairs
- Two OptimaLeather™ Euro-Recliner Chairs with Ottoman and Center Table IPO Booth Dinette (34PWD)

■ TILE ■ CARPET

	Weight Ratings (Lbs.)				Measurements							Tank Capacity (Gal.) ¹					
	Gross Vehicle	Gross Combined ²	Front Gross Axle	Rear Gross Axle		Wheelbase	Overall Length	Overall Height (with A/C (add 5" for satellite option)	Interior Height	Interior Width	Exterior Width	Water Heater	Gray Tank	Black Tank	Fresh Tank	LP Tank ³	Fuel Tank
34PWD	22,000	26,000	8,500	14,500		192"	34' 10"	12' 5"	84"	94.5"	100.5"	10	60	39	75	16	75
34PDD	22,000	26,000	8,500	14,500		192"	34' 10"	12' 5"	84"	94.5"	100.5"	10	60	39	75	16	75
36WBD	22,000	26,000	8,500	14,500		216"	36' 10"	12' 5"	84"	94.5"	100.5"	10	60	39	75	16	75

²Towing capacity is limited by GCWR; your vehicle's towing capacity is the difference between the GCWR and the actual vehicle weight, including all water, fuel, passengers and cargo. Your towed vehicle should be equipped with auxiliary brakes if the weight of the towed vehicle exceeds 1,000 lbs. Consult your owner's manual for further towing information.

³All tank capacities are estimated based upon calculations provided by the tank manufacturers and represent approximate capacities. The actual "usable capacity" may be greater or less than the estimated capacities based upon fabrication and installation of the tanks.

¹Actual filled LP capacity is 80% of listing due to safety shut-off required on tank.

The actual overall length of the recreational vehicle may differ from that indicated in the brochure due to variances in the manufacturing process and/or installed components. The actual length may be greater or less than that indicated. Due to the large variety of options and floorplan arrangements available to our customers, actual weights for each unit can differ significantly. Monaco Coach provides a weight sticker on each unit we produce which includes that unit's tank capacities and approximate weight. Consult your local Monaco Coach dealer for unit availability and further information. The information printed in this brochure reflects product design, fabrication, and component parts at the date of printing. The manufacturer reserves the right, at any time, to make changes in product design or material or component specifications as its sole option, without notice. This

includes the substitution of components of a different brand or trade name which will result in comparable performance. All information printed in this brochure is subject to change after the date of printing. Some features shown or mentioned in this brochure are optional and may only be available in selected floorplans. Photographs may show props or decorations that are not standard equipment on Monaco Coach models. Monaco Coach, the Monaco logo and its design, are registered trademarks. All other products and company names are trademarks and/or registered trademarks of their respective holders. While the color of the motorhome's exterior and the interior fabrics depicted in this sales brochure are fair and reasonable depictions, the colors depicted may not be an exact match of the actual colors because of the variances in photo-processing and variances caused by inserting the

photographs within the sales brochure. Due to product improvements, changes during the model year and/or transcription errors that may occur, information represented within this brochure may not be accurate at the time of your purchase. If certain information is significant to your purchasing decision, please confirm the information with your dealer prior to submitting your order. Component part and appliance manufacturers issue limited warranties covering those portions of the recreational vehicle not covered by the Limited Warranties issued by Monaco Coach Corporation. To learn which specific component parts and appliances are excluded from the Limited Warranties issued by Monaco Coach Corporation, please contact your selling dealership or Monaco Coach Corporation directly, or review the warranty packet inside the recreational vehicle.

	Weight Ratings (Lbs.)				Measurements	Dimensions						Capacity						
	Gross Vehicle	Gross Combined ¹	Front Gross Axle	Rear Gross Axle		Wheelbase	Overall Length	Overall Height (with A/C add 5" for satellite option)	Interior Height	Interior Width	Exterior Width	Tank Capacity (Gal.) ²	Water Heater	Gray Tank	Black Tank	Fresh Tank	LP Tank ³	Fuel Tank
34PWD	22,000	26,000	8,500	14,500		192"	34' 10"	12' 5"	84"	94.5"	100.5"	10	60	39	75	16	75	
34PDD	22,000	26,000	8,500	14,500		192"	34' 10"	12' 5"	84"	94.5"	100.5"	10	60	39	75	16	75	
36WBD	22,000	26,000	8,500	14,500		216"	36' 10"	12' 5"	84"	94.5"	100.5"	10	60	39	75	16	75	

¹Towing capacity is limited by GCWR; your vehicle's towing capacity is the difference between the GCWR and the actual vehicle weight, including all water, fuel, passengers and cargo. Your towed vehicle should be equipped with auxiliary brakes if the weight of the towed vehicle exceeds 1,000 lbs. Consult your owner's manual for further towing information.

²All tank capacities are estimated based upon calculations provided by the tank manufacturers and represent approximate capacities. The actual "usable capacity" may be greater or less than the estimated capacities based upon fabrication and installation of the tanks.

³Actual filled LP capacity is 80% of listing due to safety shut-off required on tank.

The actual overall length of the recreational vehicle may differ from that indicated in the brochure due to variances in the manufacturing process and/or installed components. The actual length may be greater or less than that indicated. Due to the large variety of options and floorplan arrangements available to our customers, actual weights for each unit can differ significantly. Monaco Coach provides a weight sticker on each unit we produce which includes that unit's tank capacities and approximate weight. Consult your local Monaco Coach dealer for unit availability and further information. The information printed in this brochure reflects product design, fabrication, and component parts at the date of printing. The manufacturer reserves the right, at any time, to make changes in product design or material or component specifications as its sole option, without notice. This

includes the substitution of components of a different brand or trade name which will result in comparable performance. All information printed in this brochure is subject to change after the date of printing. Some features shown or mentioned in this brochure are optional and may only be available in selected floorplans. Photographs may show props or decorations that are not standard equipment on Monaco Coach models. Monaco Coach, the Monaco logo and its design, are registered trademarks. All other products and company names are trademarks and/or registered trademarks of their respective holders. While the color of the motorhome's exterior and the interior fabrics depicted in this sales brochure are fair and reasonable depictions, the colors depicted may not be an exact match of the actual colors because of the variances in photo-processing and variances caused by inserting the

photographs within the sales brochure. Due to product improvements, changes during the model year and/or transcription errors that may occur, information represented within this brochure may not be accurate at the time of your purchase. If certain information is significant to your purchasing decision, please confirm the information with your dealer prior to submitting your order. Component part and appliance manufacturers issue limited warranties covering those portions of the recreational vehicle not covered by the Limited Warranties issued by Monaco Coach Corporation. To learn which specific component parts and appliances are excluded from the Limited Warranties issued by Monaco Coach Corporation, please contact your selling dealership or Monaco Coach Corporation directly, or review the warranty packet inside the recreational vehicle.



BODY CONSTRUCTION

- Alumaframe® Superstructure
- Steel Cage Cockpit Construction
- Peaked One-Piece Fiberglass Roof with Fiberglass Insulation
- Smooth Gel Coat Fiberglass Exterior Walls
- Front and Rear Molded Fiberglass Caps
- Rear Cap with Integrated Camera
- One-Piece Generator Access Door
- Rear Engine Doors
- Fiberglass Engine Cover
- Panaview™ 1-Piece Front Windshield
- 84" Interior Height
- Aluminum Framed Floor on Steel Trusses
- Laminated Structurwood™ Flooring
- Interior Paneling with 3/4" Insulation
- Foam Insulated Floor Framing with Underbelly
- Rounded Head Power Heated Remote Exterior Front-Mounted Mirrors
- Fog Lights
- Low-Profile Sealed LED Marker Lights
- Automotive Style Taillights
- Pass-Through Storage Bays under Slide-Outs
- One-Piece Polyethylene Storage Compartment
- Deluxe Full-Body Paint with Vinyl Graphics
- Rear Ladder
- Carpeted Electric Flush Floor Stepwell Cover
- Interior Rubber Entry Step
- Exterior Single Entry Step
- Undercoating

OPTIONS

- Front Cap Protective Mask
- Rounded Head Exterior Chrome Front-Mounted Mirrors with Heat and Remote
- Standard Run Savings Package: 3-Camera Rear Vision System with Audio and Adjustable Center Camera, Home Theater Surround Sound System with Sub-Woofer, Eclipse Automatic Poly-Weave Patio Awning
- Diesel XL Package (Required Option): Cummins® ISB-AD 325 HP Engine with Allison® 1000 MH 6-Speed Transmission, Upgraded Exterior Graphics, Redesigned Exterior Baggage Doors, Bevel Mirror in Kitchen, Upgraded Linoleum with Runner from Entry to Kitchen, New Slide-Out Fascia, Upgraded Kitchen and Bath Countertops, New Decorative Interior Wallboard, Upgraded Living Room Sofa, Satin Nickel Bedroom Reading Lights with Separate Switches, Window in Private Bath Area

CHASSIS/ENGINE/SUSPENSION

- Roadmaster RSR Rails Chassis
- Cummins® ISB-AD 325 HP Low-Torque Engine with Allison® 1000 MH 6-Speed World Transmission
- Push-Button Shift Pad on 1000 MH Transmission
- Engine Displacement: 359"/5.9L
- Torque: (at 1,600 RPM) 610 lbs./ft. Max. Net
- 75 Gallon Fuel Tank
- 156 Amp Alternator
- Rear Axle Ratio: 4.78:1
- Radial Tires: 255/70R/22.5
- Stainless Steel Wheel Simulators
- Leaf Spring Suspension
- Four Gas Shock Absorbers
- Performance Suspension Package
- Hydraulic Anti-Lock Braking System
- Exhaust Brake VG Turbo with Engine
- Pre-Wire for Supplemental Braking System
- Air Cleaner Restriction Indicator
- Fuel/Water Separator
- Remote Transmission Fill
- Fully Automatic Hydraulic Leveling System
- 4,000 Lb. Hitch Receiver with Dual Connector 4-Pin or 7-Pin

COCKPIT

- Fiberglass Automotive Dash with Silver Graphite Instrumentation Panel
- CD Player/Radio with DVD Player, Sirius-Ready Compatibility, Weather Band, Remote and Six Speakers
- Power Sunvisors
- Pilot and Co-Pilot Front Overhead with Raised Panel Cabinet Doors
- Front Cab over Television Secured with Steel Framing
- Rear Vision System with Audio and Adjustable Camera
- Intermittent Windshield Wipers
- 6-Quart Tank for Windshield Fluid
- Tilt/Telescopic Steering Wheel
- Cruise Control
- Power Steering
- Electric Automotive Horn
- Molded Pilot Side Console with Two-Tier Cup Holder and Control Pad for Transmission Shifter
- Molded Co-Pilot Side Console with Two-Tier Cup Holder and Map Pocket
- Soft Touch Vinyl Pilot and Co-Pilot Recliner Seats
- Six-Way Power Pilot Seat
- Seatbelt Warning Light on Dash
- Carpeted Driver and Passenger Floor Mats

OPTIONS

- Six-Way Power Co-Pilot Seat
- OptimaLeather™ Pilot and Co-Pilot Seats
- Sirius Satellite Radio System with 6 Months Prepaid Activation
- GPS System High Speed DVD Navigation System
- 3-Camera Rear Vision System with Audio and Adjustable Center Camera
- Interior Solar Privacy Screens (Manual)



BODY CONSTRUCTION

- › Alumaframe® Superstructure
- › Steel Cage Cockpit Construction
- › Peaked One-Piece Fiberglass Roof with Fiberglass Insulation
- › Smooth Gel Coat Fiberglass Exterior Walls
- › Front and Rear Molded Fiberglass Caps
- › Rear Cap with Integrated Camera
- › One-Piece Generator Access Door
- › Rear Engine Doors
- › Fiberglass Engine Cover
- › Panaview™ 1-Piece Front Windshield
- › 84" Interior Height
- › Aluminum Framed Floor on Steel Trusses
- › Laminated Structurwood™ Flooring
- › Interior Paneling with 3/4" Insulation
- › Foam Insulated Floor Framing with Underbelly
- › Rounded Head Power Heated Remote Exterior Front-Mounted Mirrors
- › Fog Lights
- › Low-Profile Sealed LED Marker Lights
- › Automotive Style Taillights
- › Pass-Through Storage Bays under Slide-Outs
- › One-Piece Polyethylene Storage Compartment
- › Deluxe Full-Body Paint with Vinyl Graphics
- › Rear Ladder
- › Carpeted Electric Flush Floor Stepwell Cover
- › Interior Rubber Entry Step
- › Exterior Single Entry Step
- › Undercoating

OPTIONS

- › Front Cap Protective Mask
- › Rounded Head Exterior Chrome Front-Mounted Mirrors with Heat and Remote
- › Standard Run Savings Package: 3-Camera Rear Vision System with Audio and Adjustable Center Camera, Home Theater Surround Sound System with Sub-Woofer, Eclipse Automatic Poly-Weave Patio Awning
- › Diesel XL Package (Required Option): Cummins® ISB-AD 325 HP Engine with Allison® 1000 MH 6-Speed Transmission, Upgraded Exterior Graphics, Redesigned Exterior Baggage Doors, Bevel Mirror in Kitchen, Upgraded Linoleum with Runner from Entry to Kitchen, New Slide-Out Fascia, Upgraded Kitchen and Bath Countertops, New Decorative Interior Wallboard, Upgraded Living Room Sofa, Satin Nickel Bedroom Reading Lights with Separate Switches, Window in Private Bath Area

CHASSIS/ENGINE/SUSPENSION

- › Roadmaster RSR Rails Chassis
- › Cummins® ISB-AD 325 HP Low-Torque Engine with Allison® 1000 MH 6-Speed World Transmission
- › Push-Button Shift Pad on 1000 MH Transmission
- › Engine Displacement: 359"/5.9L
- › Torque: (at 1,600 RPM) 610 lbs./ft. Max. Net
- › 75 Gallon Fuel Tank
- › 156 Amp Alternator
- › Rear Axle Ratio: 4.78:1
- › Radial Tires: 255/70R/22.5
- › Stainless Steel Wheel Simulators
- › Leaf Spring Suspension
- › Four Gas Shock Absorbers
- › Performance Suspension Package
- › Hydraulic Anti-Lock Braking System
- › Exhaust Brake VG Turbo with Engine
- › Pre-Wire for Supplemental Braking System
- › Air Cleaner Restriction Indicator
- › Fuel/Water Separator
- › Remote Transmission Fill
- › Fully Automatic Hydraulic Leveling System
- › 4,000 Lb. Hitch Receiver with Dual Connector 4-Pin or 7-Pin

COCKPIT

- › Fiberglass Automotive Dash with Silver Graphite Instrumentation Panel
- › CD Player/Radio with DVD Player, Sirius-Ready Compatibility, Weather Band, Remote and Six Speakers
- › Power Sunvisors
- › Pilot and Co-Pilot Front Overhead with Raised Panel Cabinet Doors
- › Front Cab over Television Secured with Steel Framing
- › Rear Vision System with Audio and Adjustable Camera
- › Intermittent Windshield Wipers
- › 6-Quart Tank for Windshield Fluid
- › Tilt/Telescopic Steering Wheel
- › Cruise Control
- › Power Steering
- › Electric Automotive Horn
- › Molded Pilot Side Console with Two-Tier Cup Holder and Control Pad for Transmission Shifter
- › Molded Co-Pilot Side Console with Two-Tier Cup Holder and Map Pocket
- › Soft Touch Vinyl Pilot and Co-Pilot Recliner Seats
- › Six-Way Power Pilot Seat
- › Seatbelt Warning Light on Dash
- › Carpeted Driver and Passenger Floor Mats

OPTIONS

- › Six-Way Power Co-Pilot Seat
- › OptimaLeather™ Pilot and Co-Pilot Seats
- › Sirius Satellite Radio System with 6 Months Prepaid Activation
- › GPS System High Speed DVD Navigation System
- › 3-Camera Rear Vision System with Audio and Adjustable Center Camera
- › Interior Solar Privacy Screens (Manual)

APPLIANCES AND ACCESSORIES

- Large Double-Door Refrigerator with Ice Maker 8 Cu. Ft.
- High-Output 3-Burner Cooktop
- Removable Solid Surface Range Covers
- Convection Microwave with Touch Control and Under-Mounted Range Hood
- 24" Stereo Color TV with Remote Control in Cockpit Overhead
- 20" Color TV with Remote Control in Bedroom
- TV Antenna
- DVD and Video Control Box with Booster and RF Modulator; Control Boxes Allow DVD Player to Play Video in Bedroom TV
- Wiring for DVD Player Hook-Up to Both TV Locations
- Exterior Hook-Ups for DSS Dish and Cable
- Interior Cable TV Hook-Up and Telephone Jacks
- Digital Satellite System Prep
- Exterior Gas Line Hook-Up Prep for LP Accessories

OPTIONS

- Large Double-Door Refrigerator with Ice Maker 10 Cu. Ft.
- Large Four-Door Refrigerator with Ice Maker (N/A with Pantry)
- High-Output 3-Burner Range with Oven
- Central Vacuum System
- Home Theater Surround Sound System with Sub-Woofer, Added to In-Dash Stereo with DVD Player

INTERIOR

- New Vintage Oak Cabinetry
- Upper Raised Panel Hardwood Cabinet Doors with Flat Panel Door on All Lower Cabinet and Bedroom Wardrobe Doors
- Hardwood Cabinet End Panels in Living Area
- Black ABS Refrigerator Insert
- Wallpaper Border inside Private Bath
- Mini-Struts on Top-Hinged Overhead Storage Doors and Positive Catches on All Other Doors
- Heavy-Duty Ball Bearing Drawer Guides
- Wood Cabinet Drawer Boxes
- Satin Nickel Cabinetry Hardware and Bath Accessories
- Solid Surface Radius Profile Kitchen Countertop with Under-Mounted Plexus-Stone Sink with Two Sink Covers
- Kitchen Countertop Extension with Two Drawers Below (N/A: 34PWD)
- Toe Kicks on Kitchen and Bath Base Cabinets
- Kitchen Countertop End Splash (N/A: 34PDD)
- Bath Lavatory Countertop, Laminate with ABS Decorative Backsplash and Laminate Perm-Edge
- All Other Countertops Laminated with Perm-Edge, Except Kitchen
- Kitchen Overhead Cabinets with Adjustable Shelf (N/A: 34PWD)
- Kitchen Pantry next to Refrigerator with Full-Height Roll-Out Storage Cabinet (N/A with Four-Door Refrigerator Option)
- Kitchen: Smoked Mirrors behind Stove Area
- Kitchen Countertop Extension (34PWD)
- Linoleum Flooring Kitchen, Bath and Entryway
- Textured Style Nylon Carpeting with Pad in Living Area and Bedroom
- Soft Touch Padded Vinyl Ceiling
- Wood Slide-Out Fascia with Fabric Inserts
- Living Area: Elongated Beveled Octagon Mirror, Wainscoting and Chair Rail Accent under Mirror (N/A: 34PWD)
- Wainscoting and Chair Rail Accent, Kitchen Bath Wall Kitchen Side (34PWD)

- Bath Door with Accent Trim on Hallway Side (N/A: 36WBD)
- Wood Trim on Bath Door, Door Jamb Opening Hallway Side (N/A: 36WBD)
- Magazine Rack Bathroom (N/A: 36WBD)
- Wainscoting and Chair Rail Accent, Rear Wall Bedroom under Window (34PDD)
- Side Wardrobe Closet with Deluxe Mirror Door Frames Satin Nickel Finish (34PDD)
- Bedspread with Two Decorative Pillows
- Decorative Fabric Headboard
- Blackout Day/Night Pleated Shades in Living Area and Bedroom
- Mini Blinds in Kitchen
- Soil Repellent Fabric Protection

OPTIONS

- Decors: Onyx II, Cocoa Beach
- Wood Choice: Newport Cherry, Champagne Select

FURNITURE

- Queen Bed with Nightstand(s)
- Party Table behind Co-Pilot Seat (34PDD)
- Arched Back Wood Booth Dinette with Legless Dream Dinette Countertop
- Roadside Fabric Jackknife Sofa with Two Pillows
- Curbside Fabric Jackknife Sofa with Two Pillows (36WBD)
- Fabric Swivel Glider Barrel Chair (34PDD)

OPTIONS

- Roadside Fabric Hide-A-Bed Sofa with Air Mattress and Two Pillows (N/A with Booth Dinette 34PWD)
- OptimaLeather™ Euro-Recliner Chair with Ottoman IPO Fabric Swivel Glider Barrel Chair (34PDD)
- Two OptimaLeather™ Euro-Recliner Chairs with Ottoman and Center Table IPO Booth Dinette (34PWD)
- Curbside: One OptimaLeather™ Euro-Recliner Chair with Ottoman and Wall-Mounted Table IPO Jackknife Sofa (36WBD)
- Freestanding Dinette with Two Freestanding Chairs and Two Folding Chairs

LAPALMA® DIESEL XL

APPLIANCES AND ACCESSORIES

- › Large Double-Door Refrigerator with Ice Maker 8 Cu. Ft.
- › High-Output 3-Burner Cooktop
- › Removable Solid Surface Range Covers
- › Convection Microwave with Touch Control and Under-Mounted Range Hood
- › 24" Stereo Color TV with Remote Control in Cockpit Overhead
- › 20" Color TV with Remote Control in Bedroom
- › TV Antenna
- › DVD and Video Control Box with Booster and RF Modulator; Control Boxes Allow DVD Player to Play Video in Bedroom TV
- › Wiring for DVD Player Hook-Up to Both TV Locations
- › Exterior Hook-Ups for DSS Dish and Cable
- › Interior Cable TV Hook-Up and Telephone Jacks
- › Digital Satellite System Prep
- › Exterior Gas Line Hook-Up Prep for LP Accessories

OPTIONS

- › Large Double-Door Refrigerator with Ice Maker 10 Cu. Ft.
- › Large Four-Door Refrigerator with Ice Maker (N/A with Pantry)
- › High-Output 3-Burner Range with Oven
- › Central Vacuum System
- › Home Theater Surround Sound System with Sub-Woofer, Added to In-Dash Stereo with DVD Player

INTERIOR

- › New Vintage Oak Cabinetry
- › Upper Raised Panel Hardwood Cabinet Doors with Flat Panel Door on All Lower Cabinet and Bedroom Wardrobe Doors
- › Hardwood Cabinet End Panels in Living Area
- › Black ABS Refrigerator Insert
- › Wallpaper Border inside Private Bath
- › Mini-Struts on Top-Hinged Overhead Storage Doors and Positive Catches on All Other Doors
- › Heavy-Duty Ball Bearing Drawer Guides
- › Wood Cabinet Drawer Boxes
- › Satin Nickel Cabinetry Hardware and Bath Accessories
- › Solid Surface Radius Profile Kitchen Countertop with Under-Mounted Plexus-Stone Sink with Two Sink Covers
- › Kitchen Countertop Extension with Two Drawers Below (N/A: 34PWD)
- › Toe Kicks on Kitchen and Bath Base Cabinets
- › Kitchen Countertop End Splash (N/A: 34PDD)
- › Bath Lavatory Countertop, Laminate with ABS Decorative Backsplash and Laminate Perm-Edge
- › All Other Countertops Laminated with Perm-Edge, Except Kitchen
- › Kitchen Overhead Cabinets with Adjustable Shelf (N/A: 34PWD)
- › Kitchen Pantry next to Refrigerator with Full-Height Roll-Out Storage Cabinet (N/A with Four-Door Refrigerator Option)
- › Kitchen: Smoked Mirrors behind Stove Area
- › Kitchen Countertop Extension (34PWD)
- › Linoleum Flooring Kitchen, Bath and Entryway
- › Textured Style Nylon Carpeting with Pad in Living Area and Bedroom
- › Soft Touch Padded Vinyl Ceiling
- › Wood Slide-Out Fascia with Fabric Inserts
- › Living Area: Elongated Beveled Octagon Mirror, Wainscoting and Chair Rail Accent under Mirror (N/A: 34PWD)
- › Wainscoting and Chair Rail Accent, Kitchen Bath Wall Kitchen Side (34PWD)
- › Bath Door with Accent Trim on Hallway Side (N/A: 36WBD)
- › Wood Trim on Bath Door, Door Jamb Opening Hallway Side (N/A: 36WBD)
- › Magazine Rack Bathroom (N/A: 36WBD)
- › Wainscoting and Chair Rail Accent, Rear Wall Bedroom under Window (34PDD)
- › Side Wardrobe Closet with Deluxe Mirror Door Frames Satin Nickel Finish (34PDD)
- › Bedspread with Two Decorative Pillows
- › Decorative Fabric Headboard
- › Blackout Day/Night Pleated Shades in Living Area and Bedroom
- › Mini Blinds in Kitchen
- › Soil Repellant Fabric Protection

OPTIONS

- › Decors: Onyx II, Cocoa Beach
- › Wood Choice: Newport Cherry, Champagne Select

FURNITURE

- › Queen Bed with Nightstand(s)
- › Party Table behind Co-Pilot Seat (34PDD)
- › Arched Back Wood Booth Dinette with Legless Dream Dinette Countertop
- › Roadside Fabric Jackknife Sofa with Two Pillows
- › Curbside Fabric Jackknife Sofa with Two Pillows (36WBD)
- › Fabric Swivel Glider Barrel Chair (34PDD)

OPTIONS

- › Roadside Fabric Hide-A-Bed Sofa with Air Mattress and Two Pillows (N/A with Booth Dinette 34PWD)
- › OptimaLeather™ Euro-Recliner Chair with Ottoman IPO Fabric Swivel Glider Barrel Chair (34PDD)
- › Two OptimaLeather™ Euro-Recliner Chairs with Ottoman and Center Table IPO Booth Dinette (34PWD)
- › Curbside: One OptimaLeather™ Euro-Recliner Chair with Ottoman and Wall-Mounted Table IPO Jackknife Sofa (36WBD)
- › Freestanding Dinette with Two Freestanding Chairs and Two Folding Chairs



ELECTRICAL SYSTEMS AND LIGHTS

- 50 Amp 120V Distribution Panel and Cord
- 55 Amp Electronic 12V Power Converter
- Onan® 6.0 kW Diesel Generator
- Two 6V House Batteries
- Two 12V Heavy-Duty Chassis Batteries
- Battery Disconnect Switch at Front Door
- 12V and 110V Outlet in Cockpit Area
- Porch Light and Exterior Step Light on Same Switch
- Exterior Power Entry Step with Light
- Interior Stepwell Entry Step Lights
- Water Pump Switch in Service Bay Area and Convenience Center
- Lights in Outside Storage Compartments
- 110V Receptacles in Outside Storage Compartment
- Underhood Utility Light
- Receptacle and Phone Jack in Dinette Area
- Directional Map Lights Pilot and Co-Pilot Seats
- Hallway Convenience Center
- Fluorescent Ceiling Lights Living Area and Bath
- Satin Nickel Decorative Lighting Living Room Wall Light at Sofa Location, Dinette Ceiling Light, Bedroom Cosmetic Light (34PDD) and Bath Vanity Light

- Satin Nickel Wall Light above Countertop Area behind Co-Pilot Seat (34PWD)
- 12V Incandescent Clear Lens Single Pancake Lights with His and Hers Switches above Bed
- Wardrobe Closet Lights

OPTIONS

- 600 Watt Inverter

PLUMBING AND LP SYSTEMS

- Kitchen Composite Under-Mounted Sink with Single Lever Satin Nickel Faucet with Pullout Sprayer
- Separate Satin Nickel Finish Faucet for Filtered Water
- Bath Lavatory Faucet Single Handle Satin Finish
- Demand Water System and Water Pump
- 10 Gallon LP Gas/Electric Water Heater with Electronic Ignition, DSI
- Winterization Valving System
- Water Heater Bypass Valve
- Toilet with Sprayer
- No-Fuss Flush Holding Tank Rinsing System
- Insulated Systems Compartment with Easy Access to Hook-Up
- Shower inside Wet Bay with Hot/Cold Water, Shower Head with Shut-Off
- Soap Dispenser inside Utility Bay
- Pressurized Water Fill
- Contained Storage Area for Sewer Hose
- One-Piece Fiberglass Shower
- New Style Shower Diverter, Hose and Head with Shut-Off, Satin Finish with Satin Slide Bar for Shower Head with Metal Soap Dish

- Satin Nickel Shower Door Frame with Obscure Glass, Increased Height (34PDD)
- Rounded Satin Nickel Shower Door Frame with Decorative Glass (N/A: 34PDD)

OPTIONS

- Bathtub IPO Shower, Rounded Shower Stalls Will Be Neo-Angled with Tub Option

HEATING, VENTS AND AIR CONDITIONING

- Dual 13.5M BTU Air Conditioners with Ducted Air and Wall Digital Thermostat
- Electronic Ignition Furnace (35M BTU)
- Electronic Dash AC/Heat Climate Control System
- Above-Floor Ducted Heating System
- Kitchen Powered Attic Fan with Wall Control of Automatic Dome and Fan Power
- Bath Powered Attic Fan with Wall Control of Automatic Dome and Fan Power
- Satin Nickel Finish Metal Air Return Grill for Furnace

OPTIONS

- Dual 13.5M BTU Air Conditioner with Heat Pumps
- 12V Heater in Wet Bay

WINDOWS, DOORS AND AWNINGS

- Radius Flush-Mounted Dual Pane Safety Glass Dark Tinted Slider Windows
- Rear Window Bedroom (34PDD)
- Bathroom Window (36WBD)
- Front Entry Door with Clear Glass, Removable Screen and Anti-Skid Steps
- Exterior Entry Door Grab Handle
- Two Interior Grab Handles, One Floor to Dash and One on Door Jamb
- Poly-Weave Patio Awning with Metal Cover
- Topper Slide-Out Awnings Living Area and Bedroom
- Tinted Skylight in Bathroom with Protecta Glaze

OPTIONS

- Eclipse Automatic Poly-Weave Patio Awning
- Poly-Weave Vinyl Front Door Awning
- Window Awnings Living Area Slide-Out House Windows (N/A: 34PWD)

SAFETY

- Fire Extinguisher
- Deadbolt Lock on Entrance Door
- 120V GFI Protected Circuit, Kitchen, Bath and Exterior
- LP Gas Detector
- Smoke Detector
- Carbon Monoxide Detector
- Pilot and Co-Pilot Three-Point Seatbelts
- Third Brake Safety Light
- Egress Windows



ELECTRICAL SYSTEMS AND LIGHTS

- › 50 Amp 120V Distribution Panel and Cord
- › 55 Amp Electronic 12V Power Converter
- › Onan® 6.0 kW Diesel Generator
- › Two 6V House Batteries
- › Two 12V Heavy-Duty Chassis Batteries
- › Battery Disconnect Switch at Front Door
- › 12V and 110V Outlet in Cockpit Area
- › Porch Light and Exterior Step Light on Same Switch
- › Exterior Power Entry Step with Light
- › Interior Stepwell Entry Step Lights
- › Water Pump Switch in Service Bay Area and Convenience Center
- › Lights in Outside Storage Compartments
- › 110V Receptacles in Outside Storage Compartment
- › Underhood Utility Light
- › Receptacle and Phone Jack in Dinette Area
- › Directional Map Lights Pilot and Co-Pilot Seats
- › Hallway Convenience Center
- › Fluorescent Ceiling Lights Living Area and Bath
- › Satin Nickel Decorative Lighting Living Room Wall Light at Sofa Location, Dinette Ceiling Light, Bedroom Cosmetic Light (34PDD) and Bath Vanity Light
- › Satin Nickel Wall Light above Countertop Area behind Co-Pilot Seat (34PWD)
- › 12V Incandescent Clear Lens Single Pancake Lights with His and Hers Switches above Bed
- › Wardrobe Closet Lights

OPTIONS

- › 600 Watt Inverter

PLUMBING AND LP SYSTEMS

- › Kitchen Composite Under-Mounted Sink with Single Lever Satin Nickel Faucet with Pullout Sprayer
- › Separate Satin Nickel Finish Faucet for Filtered Water
- › Bath Lavatory Faucet Single Handle Satin Finish
- › Demand Water System and Water Pump
- › 10 Gallon LP Gas/Electric Water Heater with Electronic Ignition, DSI
- › Winterization Valving System
- › Water Heater Bypass Valve
- › Toilet with Sprayer
- › No-Fuss Flush Holding Tank Rinsing System
- › Insulated Systems Compartment with Easy Access to Hook-Up
- › Shower inside Wet Bay with Hot/Cold Water, Shower Head with Shut-Off
- › Soap Dispenser inside Utility Bay
- › Pressurized Water Fill
- › Contained Storage Area for Sewer Hose
- › One-Piece Fiberglass Shower
- › New Style Shower Diverter, Hose and Head with Shut-Off, Satin Finish with Satin Slide Bar for Shower Head with Metal Soap Dish
- › Satin Nickel Shower Door Frame with Obscure Glass, Increased Height (34PDD)
- › Rounded Satin Nickel Shower Door Frame with Decorative Glass (N/A: 34PDD)

OPTIONS

- › Bathtub IPO Shower, Rounded Shower Stalls Will Be Neo-Angled with Tub Option

HEATING, VENTS AND AIR CONDITIONING

- › Dual 13.5M BTU Air Conditioners with Ducted Air and Wall Digital Thermostat
- › Electronic Ignition Furnace (35M BTU)
- › Electronic Dash AC/Heat Climate Control System
- › Above-Floor Ducted Heating System
- › Kitchen Powered Attic Fan with Wall Control of Automatic Dome and Fan Power
- › Bath Powered Attic Fan with Wall Control of Automatic Dome and Fan Power
- › Satin Nickel Finish Metal Air Return Grill for Furnace

OPTIONS

- › Dual 13.5M BTU Air Conditioner with Heat Pumps
- › 12V Heater in Wet Bay

WINDOWS, DOORS AND AWNINGS

- › Radius Flush-Mounted Dual Pane Safety Glass Dark Tinted Slider Windows
- › Rear Window Bedroom (34PDD)
- › Bathroom Window (36WBD)
- › Front Entry Door with Clear Glass, Removable Screen and Anti-Skid Steps
- › Exterior Entry Door Grab Handle
- › Two Interior Grab Handles, One Floor to Dash and One on Door Jamb
- › Poly-Weave Patio Awning with Metal Cover
- › Topper Slide-Out Awnings Living Area and Bedroom
- › Tinted Skylight in Bathroom with Protecta Glaze

OPTIONS

- › Eclipse Automatic Poly-Weave Patio Awning
- › Poly-Weave Vinyl Front Door Awning
- › Window Awnings Living Area Slide-Out House Windows (N/A: 34PWD)

SAFETY

- › Fire Extinguisher
- › Deadbolt Lock on Entrance Door
- › 120V GFI Protected Circuit, Kitchen, Bath and Exterior
- › LP Gas Detector
- › Smoke Detector
- › Carbon Monoxide Detector
- › Pilot and Co-Pilot Three-Point Seatbelts
- › Third Brake Safety Light
- › Egress Windows

LAPALMA® DIESEL XL



COME ON, FELLOW TRAVELERS. Haven't you waited long enough to drive your dream? It's your turn now. And Monaco is here to make it all happen. With high-line, high-performing coaches that lead the way in quality, comfort and safety. So grab a road atlas and climb aboard. The coach of your dreams is just ahead.



DEALER:



MONACO®

DRIVING YOUR DREAM.

91320 Coburg Industrial Way, Coburg, OR 97408 | 800 634-0855

www.monacocoach.com

Monaco Coach Corporation is traded on the NYSE under the listing MNC. | ©2017 NPN BROWLPO

LAPALMA® DIESEL XL



COME ON, FELLOW TRAVELERS. Haven't you waited long enough to drive your dream? It's your turn now. And Monaco is here to make it all happen. With high-line, high-performing coaches that lead the way in quality, comfort and safety. So grab a road atlas and climb aboard. The coach of your dreams is just ahead.



DEALER:



MONACO®

DRIVING YOUR DREAM.

91320 Coburg Industrial Way, Coburg, OR 97408 | 800 634-0855

www.monacocoach.com

Monaco Coach Corporation is traded on the NYSE under the listing MNC. | 0207 NPN: BROMLPD