

2008 AMERICAN EAGLE



WHETHER YOUR COACH IS PULLED BY 2 HORSES, OR 500, YOU'LL FALL IN LOVE.



American Coach.

2008 AMERICAN EAGLE



WHETHER YOUR COACH IS PULLED BY 2 HORSES, OR 500, YOU'LL FALL IN LOVE.



American Coach.



2008 AMERICAN EAGLE




American Eagle 45E shown in Cabernet Gold with Talon Graphics. (Also available in Wingspan graphics.)



2008 AMERICAN EAGLE




American Eagle 45E shown in Cabernet Gold with Talon Graphics. (Also available in Wingspan graphics.)



PURSUE
YOUR HAPPILY
EVER AFTER.

PRESENTING THE
2008 AMERICAN EAGLE BY AMERICAN COACH.

Captivating beauty. Pulse pounding details. Luxurious amenities designed to make your heart race. The alluring new American Eagle is crafted from pure romance – and the results are nothing short of enchanting.



PURSUE
YOUR HAPPILY
EVER AFTER.

PRESENTING THE
2008 AMERICAN EAGLE BY AMERICAN COACH.

Captivating beauty. Pulse pounding details. Luxurious amenities designed to make your heart race. The alluring new American Eagle is crafted from pure romance – and the results are nothing short of enchanting.



American Eagle 42F shown in Coconut Creme with Natural Cherry wood cabinetry.



American Eagle 42F shown in Coconut Creme with Natural Cherry wood cabinetry.

2008 AMERICAN EAGLE



2008 AMERICAN EAGLE





2008 AMERICAN EAGLE



American Eagle 45E shown in Midnight Onyx with Creme Brulee wood cabinetry.



2008 AMERICAN EAGLE



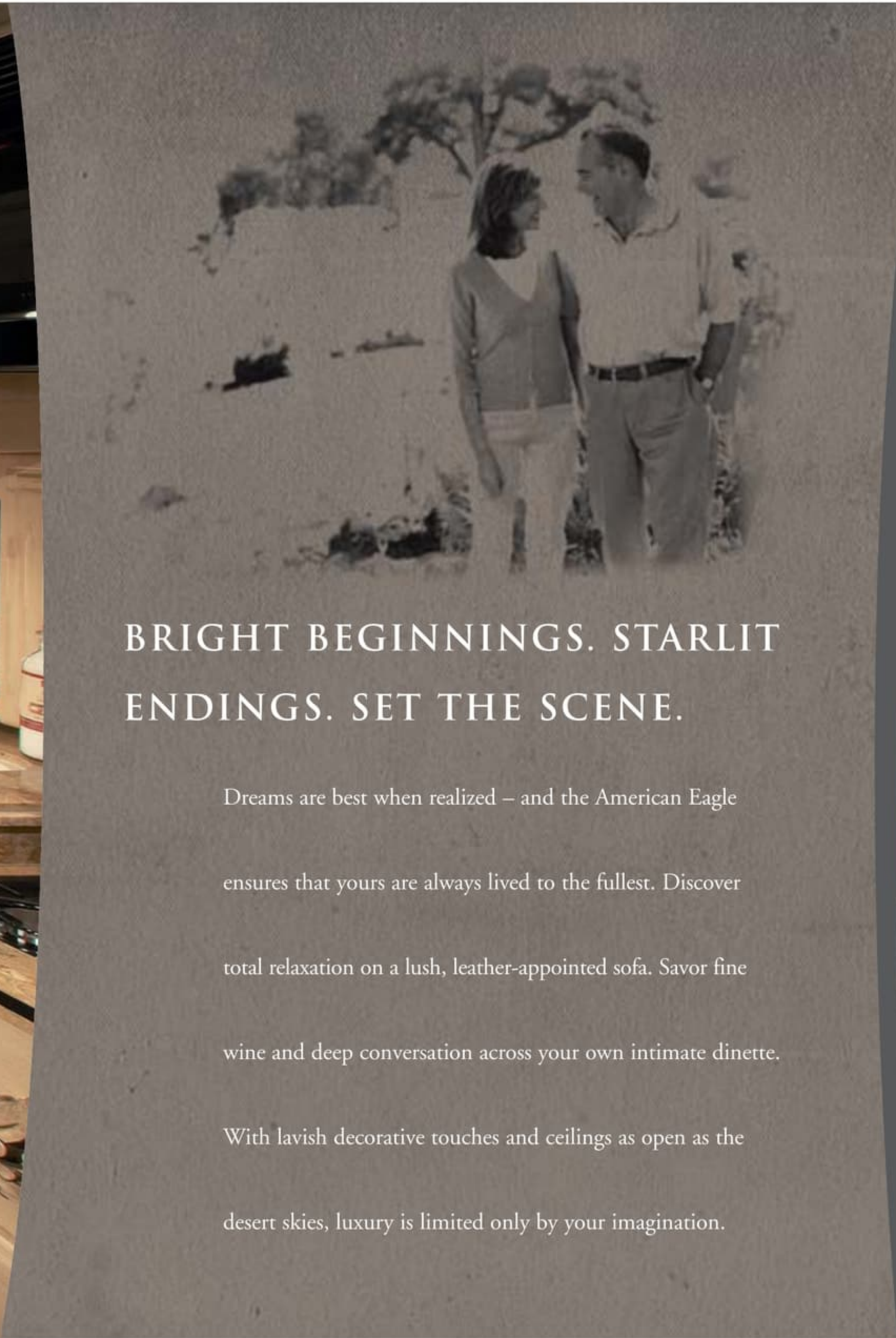
American Eagle 45E shown in Midnight Onyx with Creme Brulee wood cabinetry.



BRIGHT BEGINNINGS. STARLIT
ENDINGS. SET THE SCENE.

Dreams are best when realized – and the American Eagle ensures that yours are always lived to the fullest. Discover total relaxation on a lush, leather-appointed sofa. Savor fine wine and deep conversation across your own intimate dinette. With lavish decorative touches and ceilings as open as the desert skies, luxury is limited only by your imagination.





BRIGHT BEGINNINGS. STARLIT
ENDINGS. SET THE SCENE.

Dreams are best when realized – and the American Eagle ensures that yours are always lived to the fullest. Discover total relaxation on a lush, leather-appointed sofa. Savor fine wine and deep conversation across your own intimate dinette. With lavish decorative touches and ceilings as open as the desert skies, luxury is limited only by your imagination.





WHERE REFINED TASTE IS ALWAYS ON THE MENU.

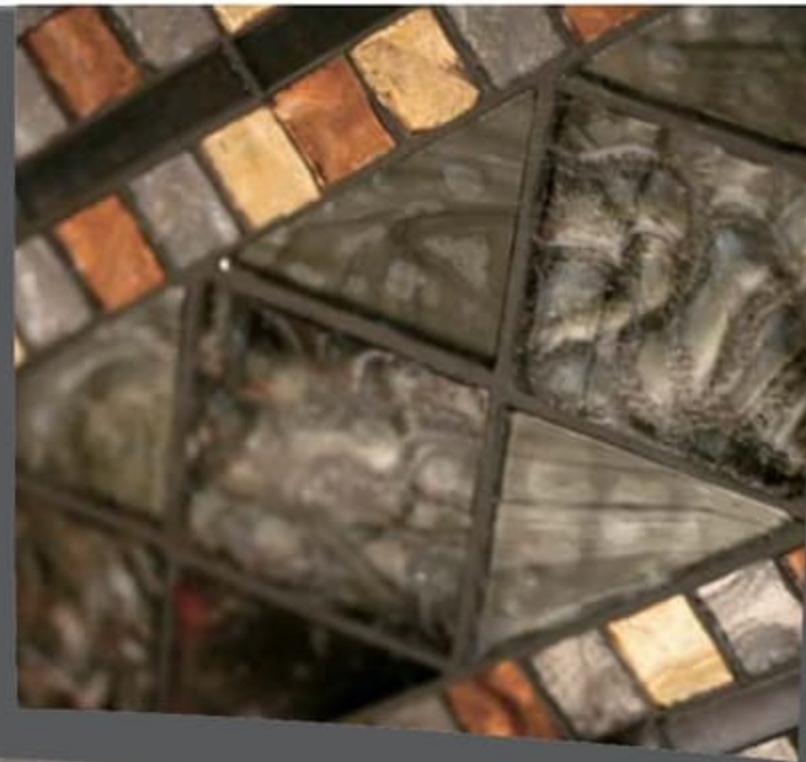
Passion for the open road can work up quite an appetite. Satisfy your cravings in a stunning gourmet kitchen fit for a renown chef.

Adorned with sleek, shining countertops, gleaming porcelain floors and top-of-the-line appliances, culinary inspiration is sure to strike.

Create a candlelit dinner for two or a feast for newfound friends.

The choice is yours. Bon appétit.





WHERE REFINED TASTE IS ALWAYS ON THE MENU.

Passion for the open road can work up quite an appetite. Satisfy your cravings in a stunning gourmet kitchen fit for a renown chef.

Adorned with sleek, shining countertops, gleaming porcelain floors and top-of-the-line appliances, culinary inspiration is sure to strike.

Create a candlelit dinner for two or a feast for newfound friends.

The choice is yours. Bon appétit.



2008 AMERICAN EAGLE



American Eagle 42F shown in Coconut Creme with Natural Cherry wood cabinetry.

2008 AMERICAN EAGLE



American Eagle 42F shown in Coconut Creme with Natural Cherry wood cabinetry.



2008 AMERICAN EAGLE





2008 AMERICAN EAGLE

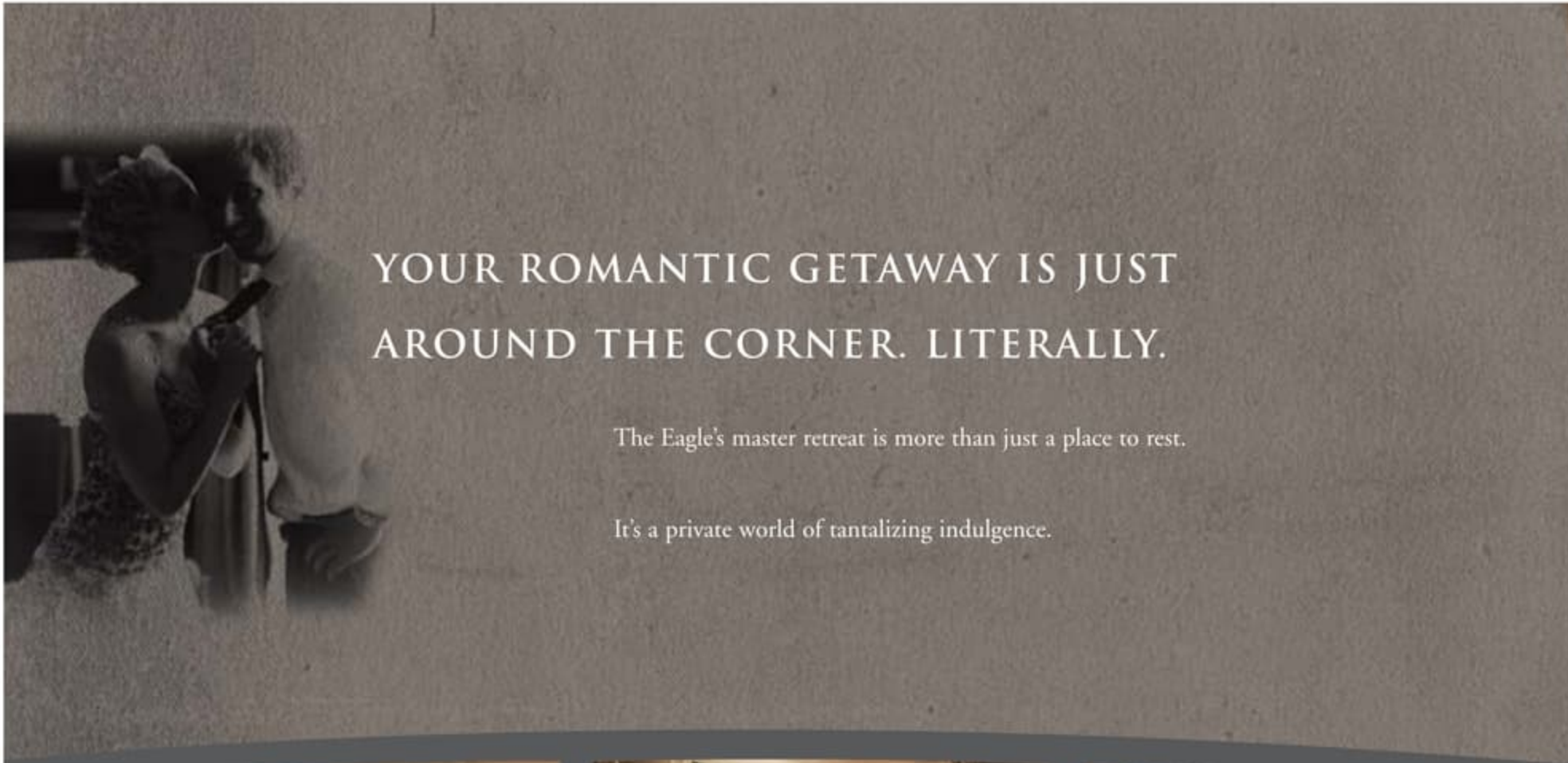




American Eagle 45E shown in Midnight Onyx with Creme Bruleé wood cabinetry.



American Eagle 45E shown in Midnight Onyx with Creme Bruleé wood cabinetry.

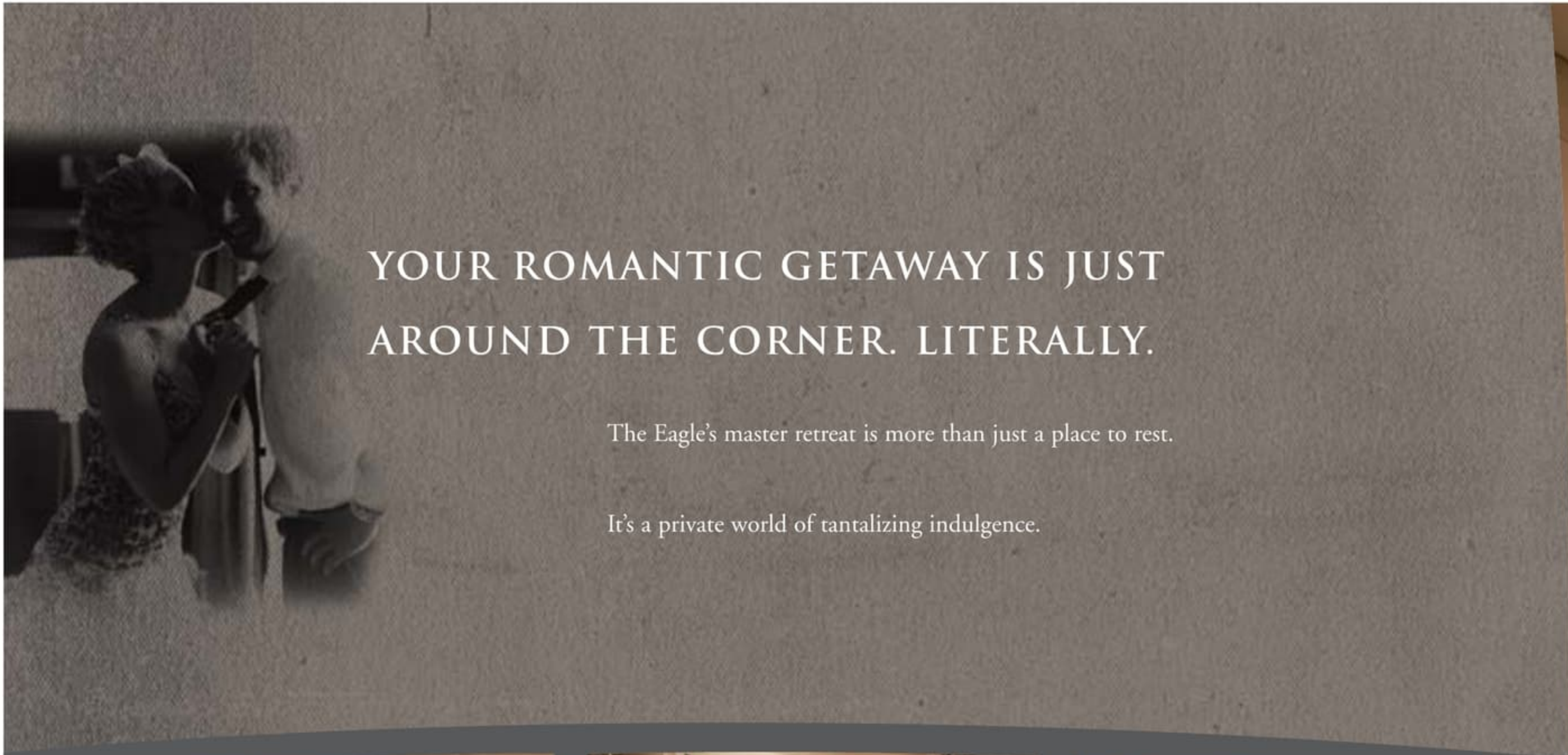


YOUR ROMANTIC GETAWAY IS JUST
AROUND THE CORNER. LITERALLY.

The Eagle's master retreat is more than just a place to rest.

It's a private world of tantalizing indulgence.





YOUR ROMANTIC GETAWAY IS JUST
AROUND THE CORNER. LITERALLY.

The Eagle's master retreat is more than just a place to rest.

It's a private world of tantalizing indulgence.





Soothe your senses inside a spa-worthy, glass enclosed shower. Delight in marvelously deluxe faucet and backsplash appointments. Rejuvenate at a handcrafted, hardwood vanity. Store seasons of clothes and collected treasures within an amazingly roomy wardrobe. There's no finer way to experience the essence of relaxation. Slip away for a moment – or stay the night.



Soothe your senses inside a spa-worthy, glass enclosed shower. Delight in marvelously deluxe faucet and backsplash appointments. Rejuvenate at a handcrafted, hardwood vanity. Store seasons of clothes and collected treasures within an amazingly roomy wardrobe. There's no finer way to experience the essence of relaxation. Slip away for a moment – or stay the night.



2008 AMERICAN EAGLE





2008 AMERICAN EAGLE



MEASURE YOUR JOURNEY IN MEMORIES. NOT MILES.

See the endless road stretch before you over the redesigned, ergonomically-minded drivers dash.

Find customized comfort as you set your heat, lumbar and six-way-adjustable driver's seat. Suddenly,

the shortest distance between points A and B no longer matters – only the experience. Pave your path.



Sleek yet functional. Solid wood drawers provide ample room for all your driving necessities and a curved integrated design that hides them away when not in use.



A classic aeronautical appearance reveals an ergonomically designed dash instrumentation panel. All gauges are back lit and highly visible through a leather and burl wood trimmed smart wheel.



Designed to easily guide you to your destination with ease and comfort is the Navion R5000 infotainment center. This multifunctional, state-of-the-art system comes with AM/FM/CD player, MP3 port, engine monitoring and rear vision camera all in one.

MEASURE YOUR JOURNEY IN MEMORIES. NOT MILES.

See the endless road stretch before you over the redesigned, ergonomically-minded driver's dash.

Find customized comfort as you set your heat, lumbar and six-way-adjustable driver's seat. Suddenly,

the shortest distance between points A and B no longer matters – only the experience. Pave your path.



Sleek yet functional. Solid wood drawers provide ample room for all your driving necessities and a curved integrated design that hides them away when not in use.



A classic aeronautical appearance reveals an ergonomically designed dash instrumentation panel. All gauges are back lit and highly visible through a leather and burl wood trimmed smart wheel.



Designed to easily guide you to your destination with ease and comfort is the Navion R5000 infotainment center. This multifunctional, state-of-the-art system comes with AM/FM/CD player, MP3 port, engine monitoring and rear vision camera all in one.



EXTERIOR GRAPHICS*

WINGSPAN



White Shadow



Sand Drift



Cabernet Gold

TALON



Colorado Red



Raceway Red



Raspberry Smoke

* All six of the available exterior colors are shown above. Each color is available in both "Wingspan" and "Talon" graphic schemes. See your American Coach dealer or visit our website at www.AmericanCoach.com to view all graphic and color choices.



EXTERIOR GRAPHICS*

WINGSPAN



White Shadow



Sand Drift



Cabernet Gold

TALON



Colorado Red



Raceway Red



Raspberry Smoke

* All six of the available exterior colors are shown above. Each color is available in both "Wingspan" and "Talon" graphic schemes. See your American Coach dealer or visit our website at www.AmericanCoach.com to view all graphic and color choices.



Silver Slate



Brushed Hazel



Spicy Nutmeg

CABINETS CHOICES



Creme Bruleé
Glaze Maple



Regency Cherry



Natural Cherry

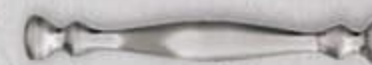


Spicy Maple



Silver Backed Taupe
Glazed Maple

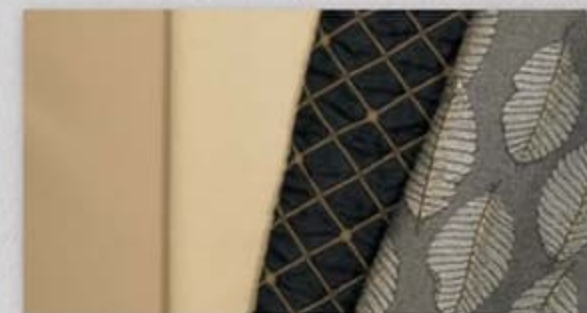
HARDWARE**



Coconut Cream



Sovereign Port



Midnight Onyx

[†] Interior décors and/or woods may be subject to change. Printed fabric samples above are close representations of actual fabrics and may be limited due to standard printing technology.

^{**} Matching cabinet hardware has been carefully coordinated and tied to specific interior décor schemes and are not separate options. Please check with your American Coach Dealer for specifics.



Silver Slate



Brushed Hazel



Spicy Nutmeg

CABINETRY CHOICES



Creme Bruleé
Glaze Maple



Regency Cherry



Natural Cherry



Spicy Maple



Silver Backed Taupe
Glazed Maple

HARDWARE**



Coconut Cream



Sovereign Port



Midnight Onyx

[†] Interior décors and/or woods may be subject to change. Printed fabric samples above are close representations of actual fabrics and may be limited due to standard printing technology.

^{**} Matching cabinet hardware has been carefully coordinated and tied to specific interior décor schemes and are not separate options. Please check with your American Coach Dealer for specifics.



2008 AMERICAN EAGLE

OUR FORMULA? INGENUITY AND ELBOW GREASE.



Don't be fooled. It takes more than a vision to make our coaches extraordinary. It takes the tireless dedication of highly-skilled craftsman and perfectionist engineers. Passionate experts who work relentlessly to bring you superior technology, meticulous design and dramatic advancements. So from cutting-edge diagnostics systems to a remarkable independent front suspension that lets you glide across the road, excellence isn't optional.

It's standard. And every step of the way, our team is driven to discover brilliant new innovations – so you can be inspired to fulfill your dreams.



THE LIBERTY CHASSIS.

Technology this groundbreaking requires an expert team. That's why American Coach and Spartan decided to join forces – to create a rugged, modular chassis system for an incomparable driving experience. Since 2004, the American Coach line has been built on the Liberty Chassis, an integration of superior American Coach framing technology and the Spartan Chassis modular system, providing the strength and structure for a ride unrivaled in the luxury coach industry. So even coupled with a high-performance diesel engine, you'll enjoy the lowest levels of vibration for the smoothest riding coach on the road. Consider it our salute to integrity.



2008 AMERICAN EAGLE

OUR FORMULA? INGENUITY AND ELBOW GREASE.



Don't be fooled. It takes more than a vision to make our coaches extraordinary. It takes the tireless dedication of highly-skilled craftsman and perfectionist engineers. Passionate experts who work relentlessly to bring you superior technology, meticulous design and dramatic advancements. So from cutting-edge diagnostics systems to a remarkable independent front suspension that lets you glide across the road, excellence isn't optional.

It's standard. And every step of the way, our team is driven to discover brilliant new innovations – so you can be inspired to fulfill your dreams.



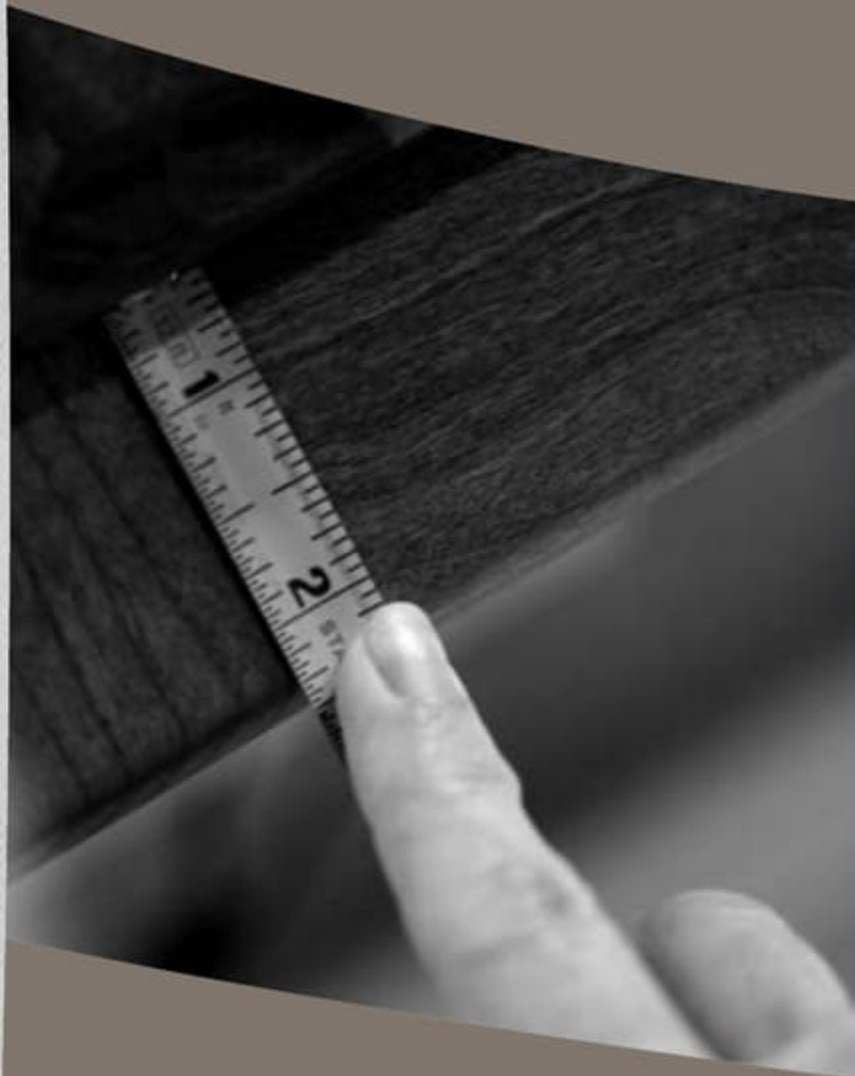
THE LIBERTY CHASSIS.

Technology this groundbreaking requires an expert team. That's why American Coach and Spartan decided to join forces – to create a rugged, modular chassis system for an incomparable driving experience. Since 2004, the American Coach line has been built on the Liberty Chassis, an integration of superior American Coach framing technology and the Spartan Chassis modular system, providing the strength and structure for a ride unrivaled in the luxury coach industry. So even coupled with a high-performance diesel engine, you'll enjoy the lowest levels of vibration for the smoothest riding coach on the road. Consider it our salute to integrity.

Appreciating what's behind each and every American Coach means understanding what isn't. No automated assembly lines. No cookie-cutter machines. No robots. In our workshops, you'll find dedicated craftsmen, hand laying tile, sanding our cabinetry to perfection – and ensuring that even the smallest details are works of art.



Appreciating what's behind each and every American Coach means understanding what isn't. No automated assembly lines. No cookie-cutter machines. No robots. In our workshops, you'll find dedicated craftsmen, hand laying tile, sanding our cabinetry to perfection – and ensuring that even the smallest details are works of art.





40J



42V



42F



45D



42L



45E



42R



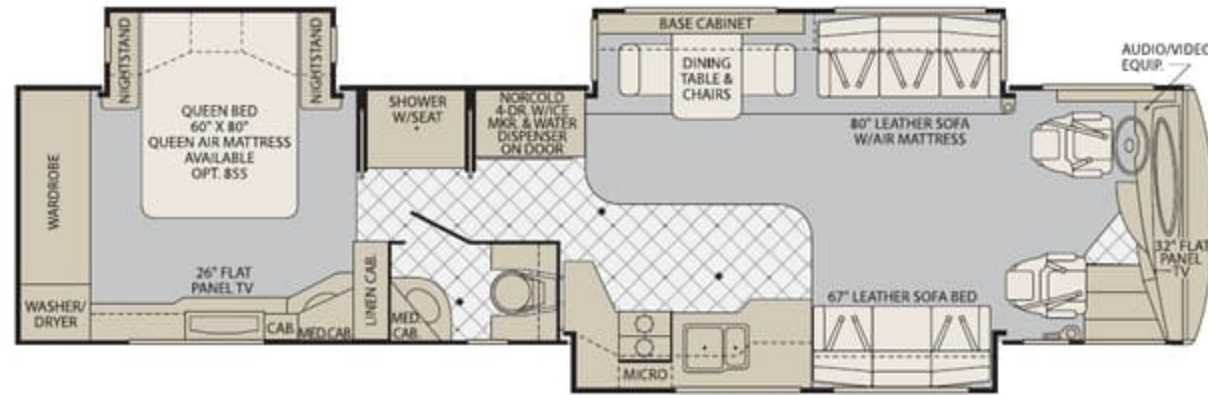
45H



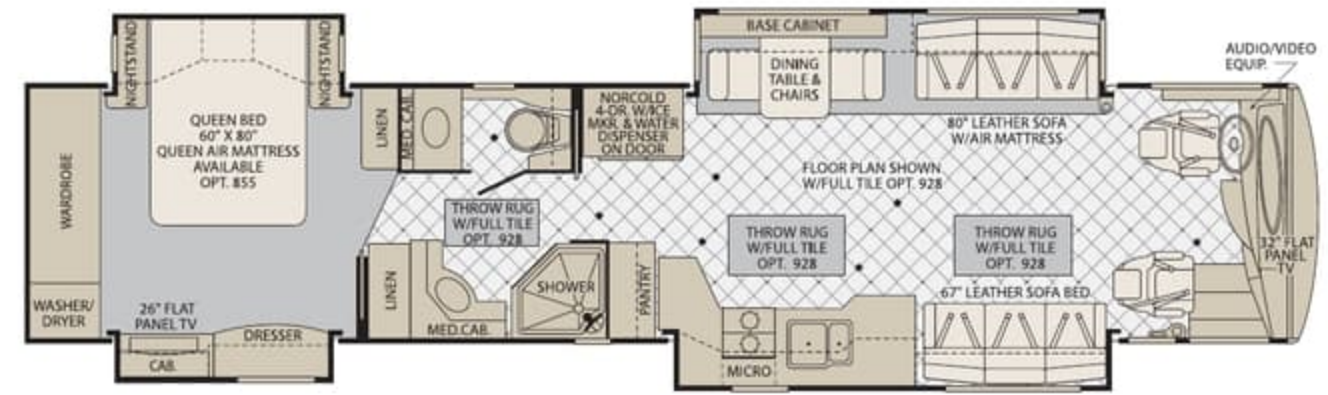
Not all available options are shown. See your American Coach dealer or visit our website at www.AmericanCoach.com to see all available options. Seatbelt configuration may vary depending on options chosen.



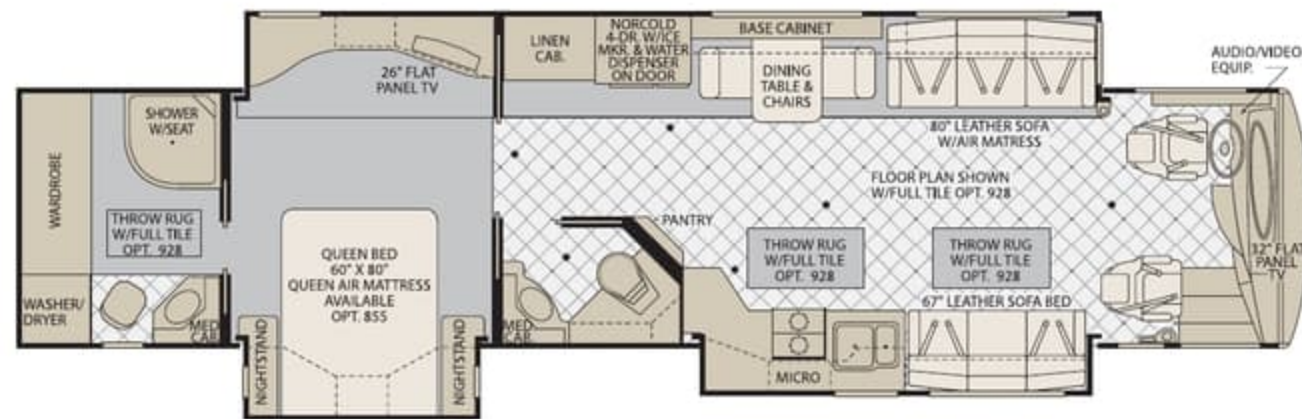
40J



42V



42F



45D



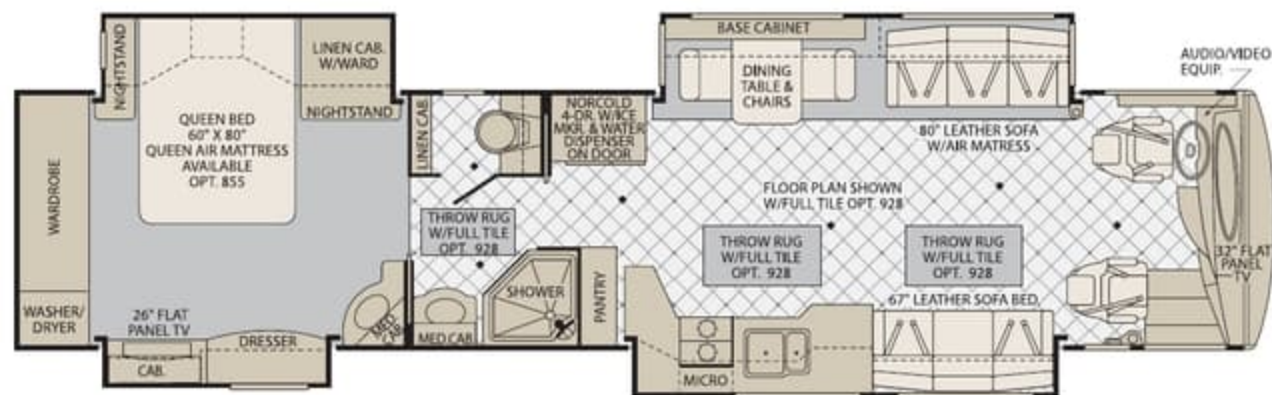
42L



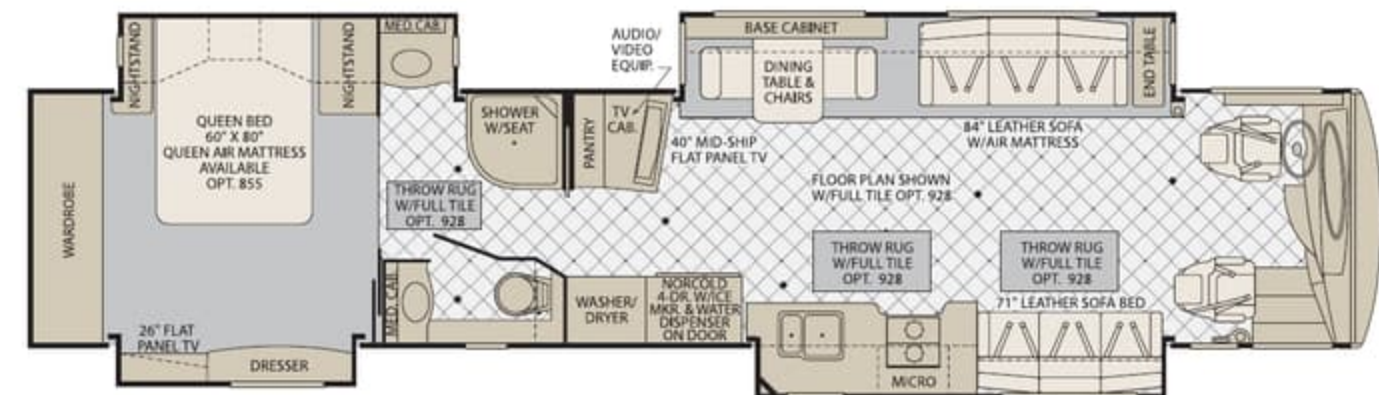
45E



42R



45H



Not all available options are shown. See your American Coach dealer or visit our website at www.AmericanCoach.com to see all available options. Seatbelt configuration may vary depending on options chosen.



WEIGHTS	40J	42F	42L	42R	42V	45D	45E	45H
GVWR (lbs) ¹	34,600	44,600	44,600	44,600	44,600	44,600	44,600	44,600
Front GAWR (lbs) ²	14,600	14,600	14,600	14,600	14,600	14,600	14,600	14,600
Rear GAWR (lbs) ²	20,000	20,000	20,000	20,000	20,000	20,000	20,000	20,000
Tag Axle GAWR (lbs) ²	N/A	10,000	10,000	10,000	10,000	10,000	10,000	10,000
Base Weight (425)(lbs) ³	29,150	32,850	33,450	33,650	33,650	N/A	N/A	N/A
Base Weight (500)(lbs) ³	N/A	33,850	34,450	34,650	34,650	36,050	36,050	36,050
GCWR (lbs) ⁴	49,600	59,600	59,600	59,600	59,600	59,600	59,600	59,600
Hitch Rating Weight (lbs) ⁵	15,000	15,000	15,000	15,000	15,000	15,000	15,000	15,000
Tongue Weight (lbs) ¹	1,500	1,500	1,500	1,500	1,500	1,500	1,500	1,500

DIMENSIONS & CAPACITIES	40J	42F	42L	42R	42V	45D	45E	45H
Wheelbase	266"	302"	302"	302"	302"	304"	304"	304"
Overall Length ⁶	39' 11.5"	42' 11.5"	42' 11.5"	42' 11.5"	42' 11.5"	44' 11.5"	44' 11.5"	44' 11.5"
Overall Height (W/SatDome)	13'	13' 1.5"	13' 1.5"	13' 1.5"	13' 1.5"	13' 1.5"	13' 1.5"	13' 1.5"
Overall Width (maximum) ^{6,7}	102"	102"	102"	102"	102"	102"	102"	102"
Interior Height (maximum)	84"	84"	84"	84"	84"	84"	84"	84"
Interior Width (maximum)	96"	96"	96"	96"	96"	96"	96"	96"
Fresh Water Holding Tank (gal)	95	120	120	120	120	120	120	120
Grey Water Holding Tank (gal)	70	70	70	60	60	100	100	100
Black Water Holding Tank (gal)	40	40	40	40	40	60	60	60
Appliance Propane Tank (gal) (WC) ⁸	38	38	38	38	38	38	38	38
Water Heater Tank (gal)	10	N/A	10	10	10	10	N/A	10
Fuel Capacity (gal)	125	150	150	150	150	150	150	150
STD Girard Patio Awnings Front/Rear	18'/16'	18'/16'	18'/16'	18'/16'	18'/16'	18'/18'	18'/18'	18'/18'
OPT Girard Driver Side Awnings Front/Rear	18'/16'	N/A	18'/16'	18'/16'	18'/16'	18'/18'	18'/18'	18'/18'

- GVWR (Gross Vehicle Weight Rating) is the maximum permissible weight of this fully loaded motor home. The GVWR is equal to or greater than the sum of the (UVW) unloaded vehicle weight plus the (CCC) cargo carrying capacity*.
- GAWR (Gross Axle Weight Rating) is the maximum permissible loaded weight a specific axle is designed to carry.
- Base Weight is the estimated weight of the motor home without fuel, options, water, cargo or passengers.
- GCWR (Gross Combined Weight Rating) is the value specified by the motor home manufacturer as the maximum allowable loaded weight of this motor home with its towed vehicle. Towing and braking capacities may be different. Refer to American Coach and chassis manufacturer's manuals for complete information.
- Length measured from front bumper to rear bumper (excludes accessories).
- Excludes safety equipment and awnings.
- Motor homes feature a body-width over 96" which will restrict your access to certain roads. Before purchasing, you should research any state and/or province road laws which may affect your usage.
- Tank manufacturer's listed water capacity (WC). Actual propane capacity is 80% of water listing as required by the safety code.

N/A = Not Applicable

*UVW and CCC are found on the cargo carrying capacity label in each RV.

† The chassis manufacturer recommends the installation of a supplemental brake control system to activate the brakes on the vehicle or trailer you are towing. Hitch receiver ratings expressed are maximum for the hitch receiver installed and may require the purchase of additional equipment that is dependant on the weight of the towed load. Consult with hitch receiver manufacturer for further information.

IMPORTANT — PLEASE READ: Product information, photography and illustrations included in this publication were as accurate as possible at the time of printing. For further product information and changes, please visit our website at www.AmericanCoach.com or contact your local American Coach dealer. Prices, materials, design and specifications are subject to change without notice. All weights, fuel, liquid capacities and dimensions are approximate. American Coach has designed its recreational vehicles to provide a variety of uses for its customers. Each vehicle features optimal seating, sleeping, storage and fluid capacities. The user is responsible for selecting the proper combination of loads (i.e. occupants, equipment, fluids, cargo, etc.) to ensure that the vehicle's capacities are not exceeded.

Liquid Weight Reference: Water (gal) = (8.3 lbs/3.8 kgs) Fuel (gal) = (7.1 lbs/3.2 kgs) Propane (gal) = (4.2 lbs/1.9 kgs)
Metric Conversion: Multiply pounds x 0.453 to obtain kilograms. Multiply gallons x 3.785 to obtain liters. Multiply liters x 61 to obtain cubic inches.

CHASSIS - CUMMINS® 425

Frame: Liberty Chassis
Engine: ISL 425 HP, 8.8L
Torque: 1200 lb-ft @ 1300 RPM
Transmission: Allison® 3000 MH, 6 Speed w/Electronic Shifter
Alternator Amps: 200 Amp, Leece Neville
Tires: 295/80R 22.5 Goodyear® Radial

CHASSIS - CUMMINS® 500

Frame: Liberty Chassis
Engine: ISM 500 HP, 11.0L
Torque: 1550 lb-ft @ 1200 RPM
Transmission: Allison® "Gen-4" 4000 MH, 6 Speed w/Electronic Shifter
Alternator Amps: 200 Amp Leece Neville
Tires: 295/80R 22.5 H Goodyear® Radial



WEIGHTS	40J	42F	42L	42R	42V	45D	45E	45H
GVWR (lbs) ¹	34,600	44,600	44,600	44,600	44,600	44,600	44,600	44,600
Front GAWR (lbs) ²	14,600	14,600	14,600	14,600	14,600	14,600	14,600	14,600
Rear GAWR (lbs) ²	20,000	20,000	20,000	20,000	20,000	20,000	20,000	20,000
Tag Axle GAWR (lbs) ²	N/A	10,000	10,000	10,000	10,000	10,000	10,000	10,000
Base Weight (425)(lbs) ³	29,150	32,850	33,450	33,650	33,650	N/A	N/A	N/A
Base Weight (500)(lbs) ³	N/A	33,850	34,450	34,650	34,650	36,050	36,050	36,050
GCWR (lbs) ⁴	49,600	59,600	59,600	59,600	59,600	59,600	59,600	59,600
Hitch Rating Weight (lbs) [†]	15,000	15,000	15,000	15,000	15,000	15,000	15,000	15,000
Tongue Weight (lbs) [†]	1,500	1,500	1,500	1,500	1,500	1,500	1,500	1,500

DIMENSIONS & CAPACITIES	40J	42F	42L	42R	42V	45D	45E	45H
Wheelbase	266"	302"	302"	302"	302"	304"	304"	304"
Overall Length ⁵	39' 11.5"	42' 11.5"	42' 11.5"	42' 11.5"	42' 11.5"	44' 11.5"	44' 11.5"	44' 11.5"
Overall Height (W/SatDome)	13'	13' 1.5"	13' 1.5"	13' 1.5"	13' 1.5"	13' 1.5"	13' 1.5"	13' 1.5"
Overall Width (maximum) ^{6,7}	102"	102"	102"	102"	102"	102"	102"	102"
Interior Height (maximum)	84"	84"	84"	84"	84"	84"	84"	84"
Interior Width (maximum)	96"	96"	96"	96"	96"	96"	96"	96"
Fresh Water Holding Tank (gal)	95	120	120	120	120	120	120	120
Grey Water Holding Tank (gal)	70	70	70	60	60	100	100	100
Black Water Holding Tank (gal)	40	40	40	40	40	60	60	60
Appliance Propane Tank (gal) (WC) ⁸	38	38	38	38	38	38	38	38
Water Heater Tank (gal)	10	N/A	10	10	10	10	N/A	10
Fuel Capacity (gal)	125	150	150	150	150	150	150	150
STD Girard Patio Awnings Front/Rear	18'/16'	18'/16'	18'/16'	18'/16'	18'/16'	18'/18'	18'/18'	18'/18'
OPT Girard Driver Side Awnings Front/Rear	18'/16'	N/A	18'/16'	18'/16'	18'/16'	18'/18'	18'/18'	18'/18'

Liquid Weight Reference: Water (gal) = (8.3 lbs/3.8 kgs) Fuel (gal) = (7.1 lbs/3.2 kgs) Propane (gal) = (4.2 lbs/1.9 kgs)
Metric Conversion: Multiply pounds x 0.453 to obtain kilograms. Multiply gallons x 3.785 to obtain liters. Multiply liters x 61 to obtain cubic inches.

CHASSIS - CUMMINS® 425

Frame: Liberty Chassis
Engine: ISL 425 HP, 8.8L
Torque: 1200 lb-ft @ 1300 RPM
Transmission: Allison® 3000 MH, 6 Speed w/Electronic Shifter
Alternator Amps: 200 Amp, Leece Neville
Tires: 295/80R 22.5 Goodyear® Radial

CHASSIS - CUMMINS® 500

Frame: Liberty Chassis
Engine: ISM 500 HP, 11.0L
Torque: 1550 lb-ft @ 1200 RPM
Transmission: Allison® "Gen-4" 4000 MH, 6 Speed w/Electronic Shifter
Alternator Amps: 200 Amp Leece Neville
Tires: 295/80R 22.5 H Goodyear® Radial

- GVWR (Gross Vehicle Weight Rating) is the maximum permissible weight of this fully loaded motor home. The GVWR is equal to or greater than the sum of the (UVW) unloaded vehicle weight plus the (CCC) cargo carrying capacity*.
- GAWR (Gross Axle Weight Rating) is the maximum permissible loaded weight a specific axle is designed to carry.
- Base Weight is the estimated weight of the motor home without fuel, options, water, cargo or passengers.
- GCWR (Gross Combined Weight Rating) is the value specified by the motor home manufacturer as the maximum allowable loaded weight of this motor home with its towed vehicle. Towing and braking capacities may be different. Refer to American Coach and chassis manufacturer's manuals for complete information.
- Length measured from front bumper to rear bumper (excludes accessories).
- Excludes safety equipment and awnings.
- Motor homes feature a body-width over 96" which will restrict your access to certain roads. Before purchasing, you should research any state and/or province road laws which may affect your usage.
- Tank manufacturer's listed water capacity (WC). Actual propane capacity is 80% of water listing as required by the safety code.

N/A = Not Applicable

*UVW and CCC are found on the cargo carrying capacity label in each RV.

† The chassis manufacturer recommends the installation of a supplemental brake control system to activate the brakes on the vehicle or trailer you are towing. Hitch receiver ratings expressed are maximum for the hitch receiver installed and may require the purchase of additional equipment that is dependant on the weight of the towed load. Consult with hitch receiver manufacturer for further information.

IMPORTANT — PLEASE READ: Product information, photography and illustrations included in this publication were as accurate as possible at the time of printing. For further product information and changes, please visit our website at www.AmericanCoach.com or contact your local American Coach dealer. Prices, materials, design and specifications are subject to change without notice. All weights, fuel, liquid capacities and dimensions are approximate. American Coach has designed its recreational vehicles to provide a variety of uses for its customers. Each vehicle features optimal seating, sleeping, storage and fluid capacities. The user is responsible for selecting the proper combination of loads (i.e. occupants, equipment, fluids, cargo, etc.) to ensure that the vehicle's capacities are not exceeded.

STANDARD & OPTIONAL FEATURES | INTERIOR AMENITIES

GENERAL AMENITIES

- Decorative Wood Window Treatments
- Solid Wood Face Framed Cabinetry and Moldings
- Lined Cabinet Interior Bottoms & Shelves
- Decorative Ceiling and Air Plenum
- Flush Bolt Latch Decorative Hardware on Pocket Doors
- Polished Porcelain Tile Floor with Décor Accents at Entry, Galley and Bathroom
- Accent Rope Lighting
- Decorative Wood Trimmed Fan-Tastic® Rain Sensor, Power Roof Vents w/3-Speed Fan (3)
- Interior MultiPlex Switches
- Hand Laid Wallpaper
- Decorative Throw Pillows
- Masland® Carpeting
- TV Cable Ready
- Outlet & Telephone Jack (Multiple Locations)

- OPTIONAL**
- 5 Premium Wood Choices
 - 6 Décor Choices
 - Custom Interior Request
 - Factory V.I.P. Delivery
 - Canadian Standards Build (Select Models)

DRIVER CONVENIENCE

- Navion®/R5000 Information and Entertainment Center; AM, FM, Single CD, MP3, Camera Monitor w/One-Way Audio
- Hardwood Dash Storage Cabinetry with Corian® Top
- 6-Way Power Driver Seat with Heat, Power Lumbar and Adjustable Arms (Leather)
- 6-Way Power Passenger Seat with Heat, Power Lumbar, Adjustable Arms and Electric Footrest (Leather)
- Sirius Satellite Radio® and 6 Month Subscription
- Sony® Rear and Side View Cameras
- Chassis Monitoring System
- Cruise Control
- I.C.C. Light Switch
- Smart Wheel w/Leather & Burl Wood Trim w/Manual Tilt, Tip & Telescope
- Top Mounted Intermittent Windshield Wiper System with Wet Arm
- Driver Side Pull Down Shade
- Power Driver Window
- One-Piece Windshield Bonded to Steel
- Full Coverage Power Sun Visors
- Windshield Washer Bottle, 2 Gallon Reservoir
- Driver and Passenger Drink Holder
- Driver and Passenger Map Reading Lights
- Halogen Head Lamps
- Denso® Dash Climate Control System
- Defrost Control System
- Adjustable Brake & Throttle Pedals
- Compass & Exterior Temperature Gauge
- Low Profile Automotive Style Dash Instrumentation, Back Lit Gages and Switches
- Tag Axle Dump Switch (Tag Axle Models)
- Keyless Entry Door Access w/Key Fob
- Auxiliary Fog Lamps

- Auxiliary Start Switch
- CB Radio Ready (Power & Antenna)
- Hadley® Air Horns
- Low Level Washer Fluid Indicator
- Multiple Auxiliary 12 Volt Dash Receptacles

- OPTIONAL**
- 6-Way "Spacious" Power Passenger Seat with Heat, Power Lumbar, Adjustable Arms and Electric Footrest (Flexsteel w/Leather)
 - Sony® Passenger GPS Monitor
 - Vorad, Vehicle On Board Radar with Always Alert, SmartCruise and Blind Spotter Collision Avoidance System
 - PressurePro® Tire Pressure Monitor
 - Garmin® Navigation System

LIVING ROOM

- Hydraulic Step Well Cover
- Entry Step Switch at Entry Wall
- Lighted Step Well Area
- Large Passenger Window
- Windshield Privacy Curtain
- 12V Halogen Ceiling Lighting and Reading Lights
- Centralized Audio-Electronics
- Day/Night Pleated Shades
- Hardwood Front TV Overhead Cabinetry
- Raised Panel Cabinet Doors
- Centralized Command Center
- Automatic Generator Start System
- Inverter and Battery Monitor

- Border Trim Area Rugs (w/Full Tile Option)
- OPTIONAL**
- Full Tile Polished Porcelain Floor with Décor Accents (Select Models)

GALLEY

- Solid Surface Galley Top, Range and Sink Covers
- Countertop Edge Treatment, "Non Drip" Edge
- Solid Surface Double Bowl Galley Sink
- Porcelain Tile and Venetian Accent Glass Backsplash
- Solid Hardwood Drawer Fronts
- Roller Bearing Drawer Guides, Full Extension
- Decorative Wood Window Treatments (Galley Window)
- Adjustable Shelves
- Cabinet Storage for Sink & Range Covers
- 12V Fluorescent Lighting
- Micro Mini Blind

- Task Halogen Lighting
 - High Rise Galley Faucet w/Pullout Sprayer
 - Silverware Tray
- OPTIONAL**
- Modified Galley with Heated Tile & Extended Sofa (Select Models)

BEDROOM

- Recessed Bedroom Ceiling Fan
- Solid Wood 6 Panel Bath and Bedroom Doors
- 30" Deep Bedroom Slides
- Solid Wood Framed Headboard with Padded Fabric Accent
- Quilted Bedspread
- Queen Innerspring Pillow Top Mattress (60" x 80")
- Lift Up Bed with Under Bed Storage
- Solid Surface Nightstand Countertops
- Overhead Cabinet Above the Bed
- Wall Sconce Light Fixtures
- Day/Night Pleated Shades
- Remote Generator Start Switch
- Second Phone Jack
- Second Solid Surface Lavvy Sink w/Solid Surface Top (Select Models)
- Cedar Lined Wardrobe
- Wardrobe Lighting
- Full Length Rear Wardrobe
- Key Actuated Hidden Safe

- OPTIONAL**
- Second Bedroom Vanity with Sink (Select Models)
 - King Bed with Pillow Top (72" x 80")
 - Select Comfort Queen Air Mattress w/2 Remotes
 - Select Comfort King Air Mattress w/2 Remotes
 - Linen Cabinet and Drawers (Select Floor Plans)

BATHROOM

- Polished Solid Surface Lavvy Countertop w/Solid Surface Sink and Residential Faucet
- Porcelain Tile and Venetian Accent Glass Backsplash
- Medicine Cabinet
- LED Floor Lights
- Color Coordinated Fiberglass Shower w/Molded Seat-Shelf (Select Models)
- Shower Caddy Molded into Shower Surround (Select Models)
- Skylight in Shower
- Residential Hand Held Shower Head
- Obscure Style Decorative Shower Glass Enclosure
- Micro Mini Blind (Bathroom Window)
- Residential China Bowl Flush Toilet w/Hand Sprayer

- Residential China Bowl Vacuum Flush Toilet (Rear Bath, Select Models)
- Toilet Paper Dispenser, Towel Rings, and Robe Hook

FURNITURE

- Exclusive Design, Flexsteel® Furniture
- Flexsteel® Leather Sofa Bed w/Air Mattress
- Flexsteel® Leather Sofa Bed with Removable Arms
- Solid Surface Dinette Table, Slide-Out Extension, 2 Decorative Chairs, 2 Folding Chairs
- Dinette with Base Cabinet Storage
- Fabric Dinette Chairs
- Decorative Chairs Not Available with Face to Face Dinette (Includes Folding)

- Dinette Face to Face Wrap Around Ensemble (Villa w/Leather)
- Flexsteel® Leather J-Love Seat
- Modified Galley with Heated Tile & Extended Sofa (Select Models)
- Villa Furniture Package (Loveseat, Sofa, Driver/Passenger Seats)

- OPTIONAL**
- Dinette Face to Face Wrap Around Ensemble (Flexsteel® w/Leather)

APPLIANCES

- LIVING ROOM**
- Sony® 32" LCD HDTV
 - Bose® Lifestyle 18 Home Entertainment System
 - Direct TV® HD, Digital

- Satellite Receiver**
- TracVision® R5 Series "In Motion" HDTV Compatible, Domed Digital Satellite System

- OPTIONAL**
- Sony® 26" LCD HDTV (Front 45H)
 - Sony® 40" LCD HDTV (Std. 45H)
 - Digital Video Recorder

- GALLEY**
- Norcold® 12 cu. ft. 4 Door Refrigerator, Icemaker, Water Dispenser, 120V/Propane
 - GE Advantium® Over the Range Convection Microwave Oven
 - Recessed 2 Burner Cook Top

- OPTIONAL**
- Dometic® 14 cu. ft., SideWise Refrigerator, 120V/Propane, Icemaker, Brushed Stainless Finish or Gloss Black (Decor Tied)
 - Residential Refrigerator, French Door Style, 20 cu. ft. with Icemaker (Select Models)

- Recessed 3 Burner Range and Oven
- Dishwasher
- Central Vacuum System w/Accessory Kit
- Insta-Hot: Hot & Cold Water Dispenser

- GENERAL**
- Washer/Dryer (Vented)
 - Washer/Dryer Ready with Shelves

- OPTIONAL**
- Stacked Washer/Dryer (Select Models)

- BEDROOM**
- Sony® 26" LCD HDTV
 - Bose® 3-2-1 Home Theater System

- Direct TV® HD, Digital Satellite Receiver

- OPTIONAL**
- Sony® 32" LCD HDTV

STANDARD & OPTIONAL FEATURES | INTERIOR AMENITIES

GENERAL AMENITIES

- Decorative Wood Window Treatments
- Solid Wood Face Framed Cabinetry and Moldings
- Lined Cabinet Interior Bottoms & Shelves
- Decorative Ceiling and Air Plenum
- Flush Bolt Latch Decorative Hardware on Pocket Doors
- Polished Porcelain Tile Floor with Décor Accents at Entry, Galley and Bathroom
- Accent Rope Lighting
- Decorative Wood Trimmed Fan-Tastic® Rain Sensor, Power Roof Vents w/3-Speed Fan (3)
- Interior MultiPlex Switches
- Hand Laid Wallpaper
- Decorative Throw Pillows
- Masland® Carpeting
- TV Cable Ready
- Outlet & Telephone Jack (Multiple Locations)

- OPTIONAL**
- 5 Premium Wood Choices
 - 6 Décor Choices
 - Custom Interior Request
 - Factory V.I.P. Delivery
 - Canadian Standards Build (Select Models)

DRIVER CONVENIENCE

- Navion®/R5000 Information and Entertainment Center; AM, FM, Single CD, MP3, Camera Monitor w/One-Way Audio
- Hardwood Dash Storage Cabinetry with Corian® Top
- 6-Way Power Driver Seat with Heat, Power Lumbar and Adjustable Arms (Leather)
- 6-Way Power Passenger Seat with Heat, Power Lumbar, Adjustable Arms and Electric Footrest (Leather)
- Sirius Satellite Radio® and 6 Month Subscription
- Sony® Rear and Side View Cameras
- Chassis Monitoring System
- Cruise Control
- I.C.C. Light Switch
- Smart Wheel w/Leather & Burl Wood Trim w/Manual Tilt, Tip & Telescope
- Top Mounted Intermittent Windshield Wiper System with Wet Arm
- Driver Side Pull Down Shade
- Power Driver Window
- One-Piece Windshield Bonded to Steel
- Full Coverage Power Sun Visors
- Windshield Washer Bottle, 2 Gallon Reservoir
- Driver and Passenger Drink Holder
- Driver and Passenger Map Reading Lights
- Halogen Head Lamps
- Denso® Dash Climate Control System
- Defrost Control System
- Adjustable Brake & Throttle Pedals
- Compass & Exterior Temperature Gauge
- Low Profile Automotive Style Dash Instrumentation, Back Lit Gages and Switches
- Tag Axle Dump Switch (Tag Axle Models)
- Keyless Entry Door Access w/Key Fob
- Auxiliary Fog Lamps

- OPTIONAL**
- Auxiliary Start Switch
 - CB Radio Ready (Power & Antenna)
 - Hadley® Air Horns
 - Low Level Washer Fluid Indicator
 - Multiple Auxiliary 12 Volt Dash Receptacles
 - 6-Way "Spacious" Power Passenger Seat with Heat, Power Lumbar, Adjustable Arms and Electric Footrest (Flexsteel w/Leather)
 - Sony® Passenger GPS Monitor
 - Vorad, Vehicle On Board Radar with Always Alert, SmartCruise and Blind Spotter Collision Avoidance System
 - PressurePro® Tire Pressure Monitor
 - Garmin® Navigation System

LIVING ROOM

- Hydraulic Step Well Cover
- Entry Step Switch at Entry Wall
- Lighted Step Well Area
- Large Passenger Window
- Windshield Privacy Curtain
- 12V Halogen Ceiling Lighting and Reading Lights
- Centralized Audio-Electronics
- Day/Night Pleated Shades
- Hardwood Front TV Overhead Cabinetry
- Raised Panel Cabinet Doors
- Centralized Command Center
- Automatic Generator Start System
- Inverter and Battery Monitor

- OPTIONAL**
- Border Trim Area Rugs (w/Full Tile Option)
 - Full Tile Polished Porcelain Floor with Décor Accents (Select Models)

GALLEY

- Solid Surface Galley Top, Range and Sink Covers
- Countertop Edge Treatment, "Non Drip" Edge
- Solid Surface Double Bowl Galley Sink
- Porcelain Tile and Venetian Accent Glass Backsplash
- Solid Hardwood Drawer Fronts
- Roller Bearing Drawer Guides, Full Extension
- Decorative Wood Window Treatments (Galley Window)
- Adjustable Shelves
- Cabinet Storage for Sink & Range Covers
- 12V Fluorescent Lighting
- Micro Mini Blind

- OPTIONAL**
- Task Halogen Lighting
 - High Rise Galley Faucet w/Pullout Sprayer
 - Silverware Tray
 - Modified Galley with Heated Tile & Extended Sofa (Select Models)

BEDROOM

- Recessed Bedroom Ceiling Fan
- Solid Wood 6 Panel Bath and Bedroom Doors
- 30" Deep Bedroom Slides
- Solid Wood Framed Headboard with Padded Fabric Accent
- Quilted Bedspread
- Queen Innerspring Pillow Top Mattress (60" x 80")
- Lift Up Bed with Under Bed Storage
- Solid Surface Nightstand Countertops
- Overhead Cabinet Above the Bed
- Wall Sconce Light Fixtures
- Day/Night Pleated Shades
- Remote Generator Start Switch
- Second Phone Jack
- Second Solid Surface Lavvy Sink w/Solid Surface Top (Select Models)
- Cedar Lined Wardrobe
- Wardrobe Lighting
- Full Length Rear Wardrobe
- Key Actuated Hidden Safe

- OPTIONAL**
- Second Bedroom Vanity with Sink (Select Models)
 - King Bed with Pillow Top (72" x 80")
 - Select Comfort Queen Air Mattress w/2 Remotes
 - Select Comfort King Air Mattress w/2 Remotes
 - Linen Cabinet and Drawers (Select Floor Plans)

BATHROOM

- Polished Solid Surface Lavvy Countertop w/Solid Surface Sink and Residential Faucet
- Porcelain Tile and Venetian Accent Glass Backsplash
- Medicine Cabinet
- LED Floor Lights
- Color Coordinated Fiberglass Shower w/Molded Seat-Shelf (Select Models)
- Shower Caddy Molded into Shower Surround (Select Models)
- Skylight in Shower
- Residential Hand Held Shower Head
- Obscure Style Decorative Shower Glass Enclosure
- Micro Mini Blind (Bathroom Window)
- Residential China Bowl Flush Toilet w/Hand Sprayer

- OPTIONAL**
- Residential China Bowl Vacuum Flush Toilet (Rear Bath, Select Models)
 - Toilet Paper Dispenser, Towel Rings, and Robe Hook

FURNITURE

- Exclusive Design, Flexsteel® Furniture
- Flexsteel® Leather Sofa Bed w/Air Mattress
- Flexsteel® Leather Sofa Bed with Removable Arms
- Solid Surface Dinette Table, Slide-Out Extension, 2 Decorative Chairs, 2 Folding Chairs
- Dinette with Base Cabinet Storage
- Fabric Dinette Chairs
- Decorative Chairs Not Available with Face to Face Dinette (Includes Folding)

- OPTIONAL**
- Dinette Face to Face Wrap Around Ensemble (Villa w/Leather)
 - Flexsteel® Leather J-Love Seat
 - Modified Galley with Heated Tile & Extended Sofa (Select Models)
 - Villa Furniture Package (Loveseat, Sofa, Driver/Passenger Seats)

APPLIANCES

- LIVING ROOM**
- Sony® 32" LCD HDTV
 - Bose® Lifestyle 18 Home Entertainment System
 - Direct TV® HD, Digital
 - Satellite Receiver
 - TracVision® R5 Series "In Motion" HDTV Compatible, Domed Digital Satellite System

- OPTIONAL**
- Sony® 26" LCD HDTV (Front 45H)
 - Sony® 40" LCD HDTV (Std. 45H)
 - Digital Video Recorder

- GALLEY**
- Norcold® 12 cu. ft. 4 Door Refrigerator, Icemaker, Water Dispenser, 120V/Propane
 - GE Advantium® Over the Range Convection Microwave Oven
 - Recessed 2 Burner Cook Top
 - OPTIONAL
 - Dometic® 14 cu. ft., SideWise Refrigerator, 120V/Propane, Icemaker, Brushed Stainless Finish or Gloss Black (Decor Tied)
 - Residential Refrigerator, French Door Style, 20 cu. ft. with Icemaker (Select Models)

- OPTIONAL**
- Recessed 3 Burner Range and Oven
 - Dishwasher
 - Central Vacuum System w/Accessory Kit
 - Insta-Hot: Hot & Cold Water Dispenser

- GENERAL**
- Washer/Dryer (Vented)
 - Washer/Dryer Ready with Shelves

- OPTIONAL**
- Stacked Washer/Dryer (Select Models)

- BEDROOM**
- Sony® 26" LCD HDTV
 - Bose® 3-2-1 Home Theater System

- OPTIONAL**
- Direct TV® HD, Digital Satellite Receiver

- OPTIONAL**
- Sony® 32" LCD HDTV

HEATING / PLUMBING

- Dual Stage High Efficient Furnaces w/Thermostat & Auto Ignition (15/22 M / 23/34 M)
- Heated Basement
- Direct Spark Ignition 10 Gallon Water Heater 120V/Propane
- Dual 15.0M Low Profile Roof Air Conditioners, (3) AC's on 42' - 45' Models
- Heat Pump on Rear AC Unit
- Hinged Plumbing & Access Panels (Galley & Bath Areas)
- Propane (LPG) Tank
- Fresh Water Gravity Fill
- Holding Tanks w/Low Point Drain Valves
- Multi-Point Water Pump Switching
- Variable Speed Water Pump
- Water Heater By/Pass Check Valve
- Whole Coach Water Filtration System
- Dual Holding Tank San-T-Flush™ System

- OPTIONAL**
- AquaHot Heating System, 50,000 BTU (Standard on 42F, 45E)
 - Heated Full Tile Floor
 - Heated Tile Floor Galley & Lavvy
 - 10 Gallon High Output Water Heater (16 Gal. Heat Equivalent)
 - Waste Management System (Macerator)

SAFETY

- Smoke Detector
- Carbon Monoxide Detector
- Fire Extinguisher
- Propane (LP) Leak Detector
- 3 Point Integrated Seat Belts at Driver and Passenger Seats
- Side Docking Lamps (4)
- Momentary Courtesy Lighting at Entry and Passenger Area
- Lighted Exterior Grab Handle with Logo
- Emergency Egress Windows (2) Turn Signal Indicators

AMERICAN EAGLE 2008

STANDARD & OPTIONAL FEATURES | EXTERIOR AMENITIES

GENERAL AMENITIES

- Diamond Shield Protective Front Mask
- 2800-Watt Pure Sine Wave Inverter/Charger
- Maintenance Free (4) Absorbed Glass Mat 6- Volt Batteries (Group GC2)
- Inverter and Battery Monitor
- ESP - Electrical System Protection (Includes Surge Protection)
- Energy Management System (50 Amp)
- Battery Disconnect Switches for House and Chassis
- Hella® Docking Lamps (4)
- Chrome "Bus Style" Heated Mirrors w/Remote Adjustment & Turn Signal Indicators
- Sliding Front Fiberglass Cap (Bottom)
- Hydraulic Powered Generator Slide
- Utility Light-Front & Rear
- Dual Locking Fuel Fill Doors
- Fresh Water Hose (25')
- Sensa Tank Level Monitoring System (Interior & Exterior Monitor)
- Spray Wand w/Soap Dispenser & Paper Towel Holder
- Chrome Headlight Bezels
- Power Cord Reel, 50 AMP
- Chrome Hitch Cover, Pin & Clip
- Full Width Rear Rock Guard with Stainless Logo Panel
- Mud Flaps, Front & Rear
- Roof Mounted Engine Air Intake
- Two Piece Aluminum Rear Ladder
- Integrated Rear Upper Fiberglass Wing Deflector
- Large Rear Engine Access Door w/Power Assist Struts
- Brushed Chrome Rear Access Grill
- Solar Charging Panel (65w)
- Power Luggage Door Locks (Select Doors) with Remote Key Fob
- Hinge Pin Retention System (Holds Luggage Doors Open)
- Porch Light
- Keyless Entry Touch Pad/Entry Handle Integrated
- Brushed Stainless Kick Plate Under Entry Door
- Power Double Entry Step "Bus Style"

- Boxed End Slide-Out Topper Awnings
- Electrical Outlets in Exterior Luggage Compartments
- Air Inflation Hose w/Fittings
- Park Telephone Ready
- Convenience Light in Utility Compartment

- OPTIONAL**
- 2 Exterior Graphic Design Choices (Talon or Wingspan)
 - Custom Exterior Paint Color Request
 - Acrylic Shield (Deletes Standard Diamond Shield)
 - Power Water Hose Reel
 - Power Cord Remote (Key FOB)
 - Spot Light
 - 1st Full Bay 90° Slide Tray
 - 1st Full Bay 36° and 54° Slide Tray
 - 2nd Full Bay 90° Slide Tray
 - 2nd Full Bay 36° and 54° Slide Tray
 - 2nd Full Bay 54° Slide Tray w/AquaHot System (N/A on 45E)

CHASSIS / ENGINE / SUSPENSION

- Liberty Chassis (Patented) w/Electro Coated Platform
- Allison® 3000 MH, 6-Speed Automatic Transmission (w/425 HP Engines)
- Allison® 4000 MH, 6-Speed Automatic Transmission (w/500 HP Engines)
- Independent Front Suspensions with 55 Degree Steering Angle
- Aluminum Wheels
- 295/80R LRH 22.5" Radial Tires
- 200 Amp Leece Neville Alternator
- Group 31 Chassis Batteries (2) - 12V-950 cca Per Battery
- 2 Stage Engine Brake
- Air Ride Suspension with Bilstein® Shocks
- Anti-Lock Brake System (ABS)
- Automatic 4-Point Hydraulic Leveling System
- Automatic Traction Control
- Chassis Filter Service Center
- Daytime Running Lights
- Engine Block Heater
- Full Air Brakes with Automatic Slack Adjusters
- Tire Pressure Check Gauge (Manual)
- Trailer Hitch Receiver 15,000 lbs.

- OPTIONAL**
- Automatic 4-Point Dual Leveling, Air and Hydraulic
 - Spartan® MMT, Modular Chassis System w/Cummins ISL 425HP (40' - 42' Models)
 - Spartan® K2, Modular Chassis System w/Cummins ISM 500HP (42' - 45' Models)

APPLIANCES

- Onan® 7.5kW Quiet Diesel Generator, Hydraulic Power Slide-Out (40' Models)
- Onan® 10.0kW Quiet Diesel Generator, Hydraulic Power Slide-Out
- Power TV Antenna with Audible "Antenna Up" Warning
- OPTIONAL
- Additional 2000-Watt Pure Sine Inverter/Charger, (4) AGM Batteries
- Norcold® 100 lb Chest Refrigerator/Freezer 12V/120V (Requires Tray Option)
- Exterior Entertainment Center with Easy Swing Extension Arm and Cabinet Storage (Includes: Sony® 26" LCD TV, AM, FM, CD, DVD Player and Additional Cabinet Storage)

CONSTRUCTION

- Electro-Coated Heavy Duty Steel Framing (Liberty Chassis)
- Aluminum Framed Wall Construction
- Interlocking Aluminum Framing Connections; Roof, Sidewall & Floor
- Steel Construction on Front Bulkhead
- Vacu-bond® Sidewall, Roof, Floor and Rear Wall
- Dense Bead Foam Insulation Throughout
- 5 Layer Flooring with 3" Bead Foam Insulation
- 6 Layer Roof with 6 1/2" Bead Foam Insulation (at Centerline)
- Dupont® Exterior Automotive Full Body Paint w/Cut and Buff Finish
- Gel Coat Fiberglass Exterior Sidewalls w/No Wood Substrate
- Full Fiberglass Front & Rear Caps
- Fiberglass Front & Rear Quarter Panels
- Fiberglass Molded Front Bumper
- One-Piece Fiberglass Roof w/Radius Corners and Seamless Transition to Caps
- Insulated Aluminum Framed and Paneled Luggage Compartment Doors
- Sound Absorption Material Front, Rear & Engine
- Pebble Finished Fiberglass Basement Lining
- Heated Water & Holding Tank Compartments
- Central Electrical Panel for 120V/12V AC/DC
- TuffPEX® Plumbing System

AWNINGS / WINDOWS / DOORS

- 30" Avionics Entry Door with Dead Bolt and Pneumatic Air Latches
- Entry Screen Door with Logo Kick Plate
- Powered Entry Door Awning
- Roof Mounted Girard Power Awnings with Wind Sensor System (2 Door Side Awnings, Sofa-Dinette Window Awning)
- Slide-Out Topper Awnings
- Tinted Dual Pane Windows with Screens
- OPTIONAL
- Roof Mounted Girard Power Awnings with Dual Wind Sensor Systems (2 Door Side Awnings/2 Driver Side Awnings)(Select Models)

HEATING / PLUMBING

- Dual Stage High Efficient Furnaces w/Thermostat & Auto Ignition (15/22 M / 23/34 M)
- Heated Basement
- Direct Spark Ignition 10 Gallon Water Heater 120V/Propane
- Dual 15.0M Low Profile Roof Air Conditioners, (3) AC's on 42' - 45' Models
- Heat Pump on Rear AC Unit
- Hinged Plumbing & Access Panels (Galley & Bath Areas)
- Propane (LPG) Tank
- Fresh Water Gravity Fill
- Holding Tanks w/Low Point Drain Valves
- Multi-Point Water Pump Switching
- Variable Speed Water Pump
- Water Heater By/Pass Check Valve
- Whole Coach Water Filtration System
- Dual Holding Tank San-T-Flush™ System

- OPTIONAL**
- AquaHot Heating System, 50,000 BTU (Standard on 42F, 45E)
 - Heated Full Tile Floor
 - Heated Tile Floor Galley & Lavvy
 - 10 Gallon High Output Water Heater (16 Gal. Heat Equivalent)
 - Waste Management System (Macerator)

SAFETY

- Smoke Detector
- Carbon Monoxide Detector
- Fire Extinguisher
- Propane (LP) Leak Detector
- 3 Point Integrated Seat Belts at Driver and Passenger Seats
- Side Docking Lamps (4)
- Momentary Courtesy Lighting at Entry and Passenger Area
- Lighted Exterior Grab Handle with Logo
- Emergency Egress Windows (2) Turn Signal Indicators

AMERICAN EAGLE 2008

STANDARD & OPTIONAL FEATURES | EXTERIOR AMENITIES

GENERAL AMENITIES

- Diamond Shield Protective Front Mask
- 2800-Watt Pure Sine Wave Inverter/Charger
- Maintenance Free (4) Absorbed Glass Mat 6- Volt Batteries (Group GC2)
- Inverter and Battery Monitor
- ESP - Electrical System Protection (Includes Surge Protection)
- Energy Management System (50 Amp)
- Battery Disconnect Switches for House and Chassis
- Hella® Docking Lamps (4)
- Chrome "Bus Style" Heated Mirrors w/Remote Adjustment & Turn Signal Indicators
- Sliding Front Fiberglass Cap (Bottom)
- Hydraulic Powered Generator Slide
- Utility Light-Front & Rear
- Dual Locking Fuel Fill Doors
- Fresh Water Hose (25')
- Sensa Tank Level Monitoring System (Interior & Exterior Monitor)
- Spray Wand w/Soap Dispenser & Paper Towel Holder
- Chrome Headlight Bezels
- Power Cord Reel, 50 AMP
- Chrome Hitch Cover, Pin & Clip
- Full Width Rear Rock Guard with Stainless Logo Panel
- Mud Flaps, Front & Rear
- Roof Mounted Engine Air Intake
- Two Piece Aluminum Rear Ladder
- Integrated Rear Upper Fiberglass Wing Deflector
- Large Rear Engine Access Door w/Power Assist Struts
- Brushed Chrome Rear Access Grill
- Solar Charging Panel (65w)
- Power Luggage Door Locks (Select Doors) with Remote Key Fob
- Hinge Pin Retention System (Holds Luggage Doors Open)
- Porch Light
- Keyless Entry Touch Pad/Entry Handle Integrated
- Brushed Stainless Kick Plate Under Entry Door
- Power Double Entry Step "Bus Style"

- Boxed End Slide-Out Topper Awnings
- Electrical Outlets in Exterior Luggage Compartments
- Air Inflation Hose w/Fittings
- Park Telephone Ready
- Convenience Light in Utility Compartment

OPTIONAL

- 2 Exterior Graphic Design Choices (Talon or Wingspan)
- Custom Exterior Paint Color Request
- Acrylic Shield (Deletes Standard Diamond Shield)
- Power Water Hose Reel
- Power Cord Remote (Key FOB)
- Spot Light
- 1st Full Bay 90" Slide Tray
- 1st Full Bay 36" and 54" Slide Tray
- 2nd Full Bay 90" Slide Tray
- 2nd Full Bay 36" and 54" Slide Tray
- 2nd Full Bay 54" Slide Tray w/AquaHot System (N/A on 45E)

CHASSIS / ENGINE / SUSPENSION

- Liberty Chassis (Patented) w/Electro Coated Platform
- Allison® 3000 MH, 6-Speed Automatic Transmission (w/425 HP Engines)
- Allison® 4000 MH, 6-Speed Automatic Transmission (w/500 HP Engines)
- Independent Front Suspensions with 55 Degree Steering Angle
- Aluminum Wheels
- 295/80R LRH 22.5" Radial Tires
- 200 Amp Leece Neville Alternator
- Group 31 Chassis Batteries (2) - 12V-950 cca Per Battery
- 2 Stage Engine Brake
- Air Ride Suspension with Bilstein® Shocks
- Anti-Lock Brake System (ABS)
- Automatic 4-Point Hydraulic Leveling System
- Automatic Traction Control
- Chassis Filter Service Center
- Daytime Running Lights
- Engine Block Heater
- Full Air Brakes with Automatic Slack Adjusters
- Tire Pressure Check Gauge (Manual)
- Trailer Hitch Receiver 15,000 lbs.

OPTIONAL

- Automatic 4-Point Dual Leveling, Air and Hydraulic
- Spartan® MGMT, Modular Chassis System w/Cummins ISL 425HP (40' - 42' Models)
- Spartan® K2, Modular Chassis System w/Cummins ISM 500HP (42' - 45' Models)

APPLIANCES

- Onan® 7.5kW Quiet Diesel Generator, Hydraulic Power Slide-Out (40' Models)
- Onan® 10.0kW Quiet Diesel Generator, Hydraulic Power Slide-Out
- Power TV Antenna with Audible "Antenna Up" Warning
- Additional 2000-Watt Pure Sine Inverter/Charger, (4) AGM Batteries
- Norcold® 100 lb Chest Refrigerator/Freezer 12V/120V (Requires Tray Option)
- Exterior Entertainment Center with Easy Swing Extension Arm and Cabinet Storage (Includes: Sony® 26" LCD TV, AM, FM, CD, DVD Player and Additional Cabinet Storage)

CONSTRUCTION

- Electro-Coated Heavy Duty Steel Framing (Liberty Chassis)
- Aluminum Framed Wall Construction
- Interlocking Aluminum Framing Connections; Roof, Sidewall & Floor
- Steel Construction on Front Bulkhead
- Vacu-bond® Sidewall, Roof, Floor and Rear Wall
- Dense Bead Foam Insulation Throughout
- 5 Layer Flooring with 3" Bead Foam Insulation
- 6 Layer Roof with 6 1/2" Bead Foam Insulation (at Centerline)
- Dupont® Exterior Automotive Full Body Paint w/Cut and Buff Finish
- Gel Coat Fiberglass Exterior Sidewalls w/No Wood Substrate
- Full Fiberglass Front & Rear Caps
- Fiberglass Front & Rear Quarter Panels
- Fiberglass Molded Front Bumper
- One-Piece Fiberglass Roof w/Radius Corners and Seamless Transition to Caps
- Insulated Aluminum Framed and Paneled Luggage Compartment Doors
- Sound Absorption Material Front, Rear & Engine
- Pebble Finished Fiberglass Basement Lining
- Heated Water & Holding Tank Compartments
- Central Electrical Panel for 120V/12V AC/DC
- TuffPEX® Plumbing System

AWNINGS / WINDOWS / DOORS

- 30" Avionics Entry Door with Dead Bolt and Pneumatic Air Latches
- Entry Screen Door with Logo Kick Plate
- Powered Entry Door Awning
- Roof Mounted Girard Power Awnings with Wind Sensor System (2 Door Side Awnings, Sofa-Dinette Window Awning)
- Slide-Out Topper Awnings
- Tinted Dual Pane Windows with Screens
- OPTIONAL
- Roof Mounted Girard Power Awnings with Dual Wind Sensor Systems (2 Door Side Awnings/2 Driver Side Awnings)(Select Models)



American Coach.

THE OFFICIAL LUXURY COACH OF THE AMERICAN ROAD

For more information, visit us at www.AmericanCoach.com or call us at 800.854.1344.

© 2007 Fleetwood Enterprises, Inc. Printed in the USA. Inventory Control Number AE08B1, 7/07. Model Year 2008, First Edition.



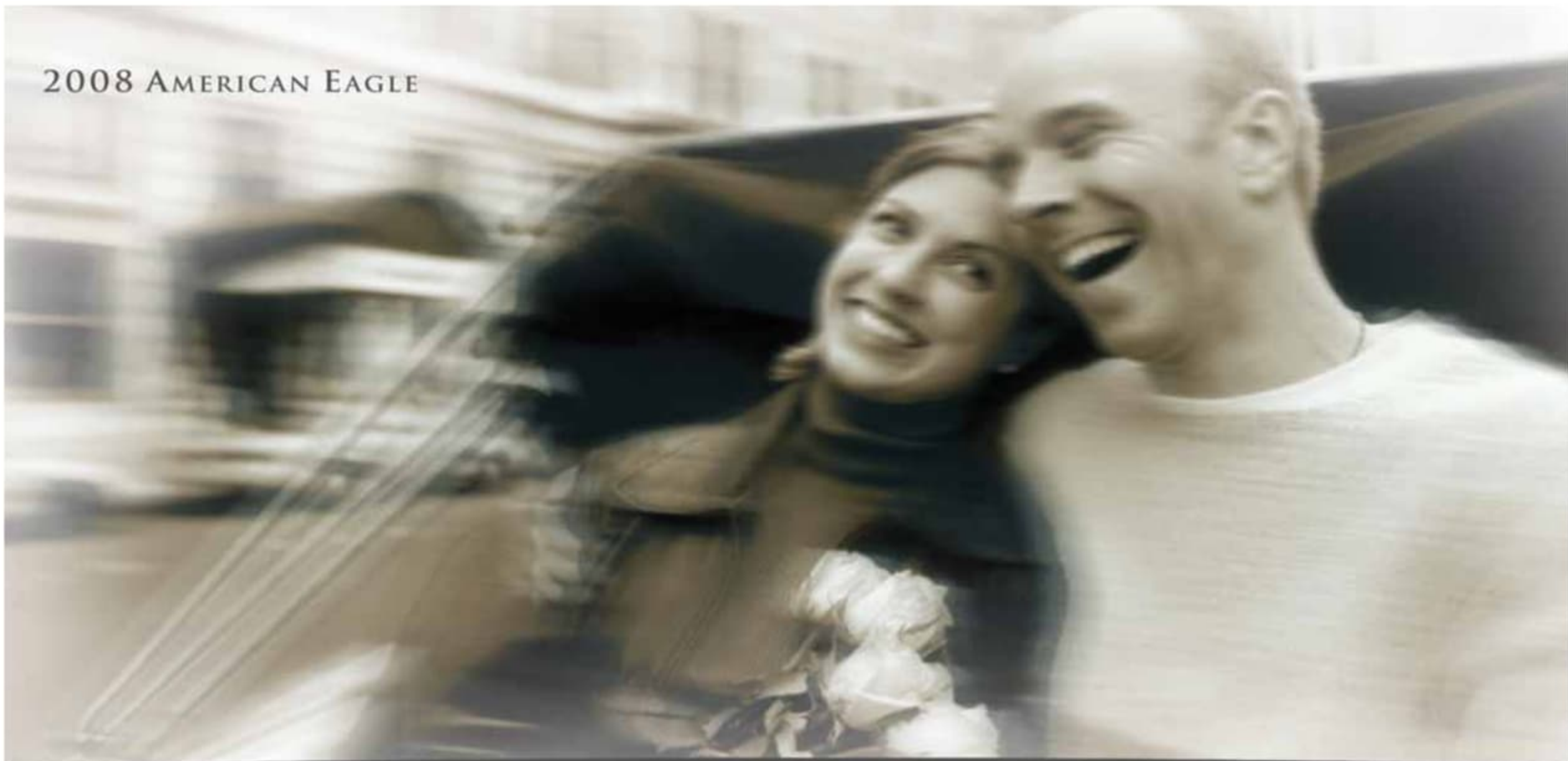
American Coach.

THE OFFICIAL LUXURY COACH OF THE AMERICAN ROAD

For more information, visit us at www.AmericanCoach.com or call us at 800.854.1344.

© 2007 Fleetwood Enterprises, Inc. Printed in the USA. Inventory Control Number AE08B1, 7/07. Model Year 2008, First Edition.

2008 AMERICAN EAGLE



WHETHER YOUR COACH IS PULLED BY 2 HORSES, OR 500, YOU'LL FALL IN LOVE.



American Coach®

Model 42C

2008 AMERICAN EAGLE

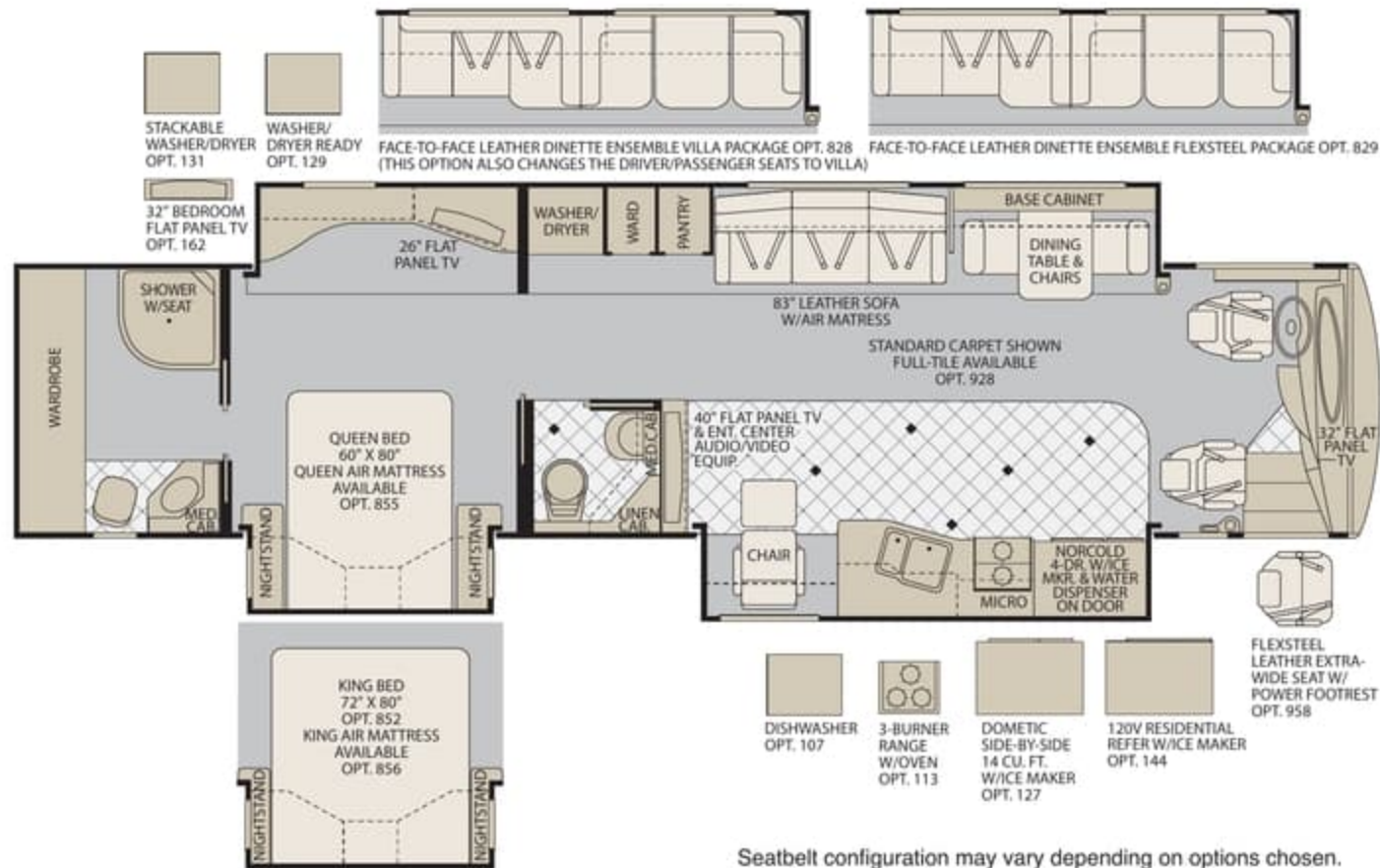


WHETHER YOUR COACH IS PULLED BY 2 HORSES, OR 500, YOU'LL FALL IN LOVE.



American Coach®

Model 42C



Seatbelt configuration may vary depending on options chosen.

weights and measurements

GVWR (lbs) ¹	44,600	GCWR (lbs) ³	59,600
Front GAWR (lbs) ²	14,600	Hitch Rating Weight (lbs) ¹	15,000
Rear GAWR (lbs) ²	20,000	Tongue Weight (lbs) ¹	1,500
Tag Axle GAWR (lbs) ²	10,000		

dimensions and capacities

Wheelbase	302"
Overall Length ⁴	42' 11.5"
Overall Height (W/SatDome)	13' 1.5"
Overall Width (maximum) ^{5,6}	102"
Interior Height (maximum)	84"
Interior Width (maximum)	96"
Fresh Water Holding Tank (gal)	95
Grey Water Holding Tank (gal)	70
Black Water Holding Tank (gal)	40
Appliance Propane Tank (gal) (WC) ⁷	38
Water Heater Tank (gal)	N/A
Fuel Capacity (gal)	150
STD Girard Patio Awnings Front/Rear	18' 16'
OPT Girard Driver Side Awnings Front/Rear	N/A

Liquid Weight Reference: Water (gal) = (8.3 lbs/3.8 kgs) Fuel (gal) = 7.1 lbs/3.2 kgs
Propane (gal) = (4.2 lbs/1.9 kgs)

Metric Conversion: Multiply pounds x 0.453 to obtain kilograms. Multiply gallons x 3.785 to obtain liters. Multiply liters x 61 to obtain inches.

chassis - cummins® 425 **chassis - cummins® 500**

Frame: Liberty Chassis	Frame: Liberty Chassis
Engine: ISL 425 HP, 8.8L	Engine: ISM 500 HP, 10.8L
Torque: 1200 lb-ft @ 1300 RPM	Torque: 1550 lb-ft @ 1200 RPM
Transmission: Allison® 3000 MH, 6 Speed w/Electronic Shifter	Transmission: Allison® "Gen-4" 4000 MH, 6 Speed w/Electronic Shifter
Alternator Amps: 200 Amp, Leece Neville	Alternator Amps: 200 Amp, Leece Neville
Tires: 295/80R 22.5 Goodyear® Radial	Tires: 295/80R 22.5 Goodyear® Radial

1. GVWR (Gross Vehicle Weight Rating) is the maximum permissible weight of this fully loaded motor home. The GVWR is equal to or greater than the sum of the (UVW) unloaded vehicle weight plus the (CCC) cargo carrying capacity.
 2. GAWR (Gross Axle Weight Rating) is the maximum permissible loaded weight a specific axle is designed to carry.
 3. GCWR (Gross Combined Weight Rating) is the value specified by the motor home manufacturer as the maximum allowable loaded weight of this motor home with its towed vehicle. Towing and braking capacities may be different. Refer to American Coach and chassis manufacturer's manuals for complete information.
 4. Length measured from front bumper to rear bumper (excludes accessories).
 5. Excludes safety equipment and awnings.
 6. Motor homes feature a body-width over 96" which will restrict your access to certain roads. Before purchasing, you should research any state and/or province road laws which may affect your usage.

7. Tank manufacturer's listed water capacity (WC). Actual propane capacity is 80% of water listing as required by the safety code.
 N/A = Not Applicable
 *UVW and CCC are found on the cargo carrying capacity label in each RV.
¹ The chassis manufacturer recommends the installation of a supplemental brake control system to activate the brakes on the vehicle or trailer you are towing. Hitch receiver ratings expressed are maximum for the hitch receiver installed and may require the purchase of additional equipment that is dependant on the weight of the towed load. Consult with hitch receiver manufacturer for further information.

AE42C_08F1, 11/07

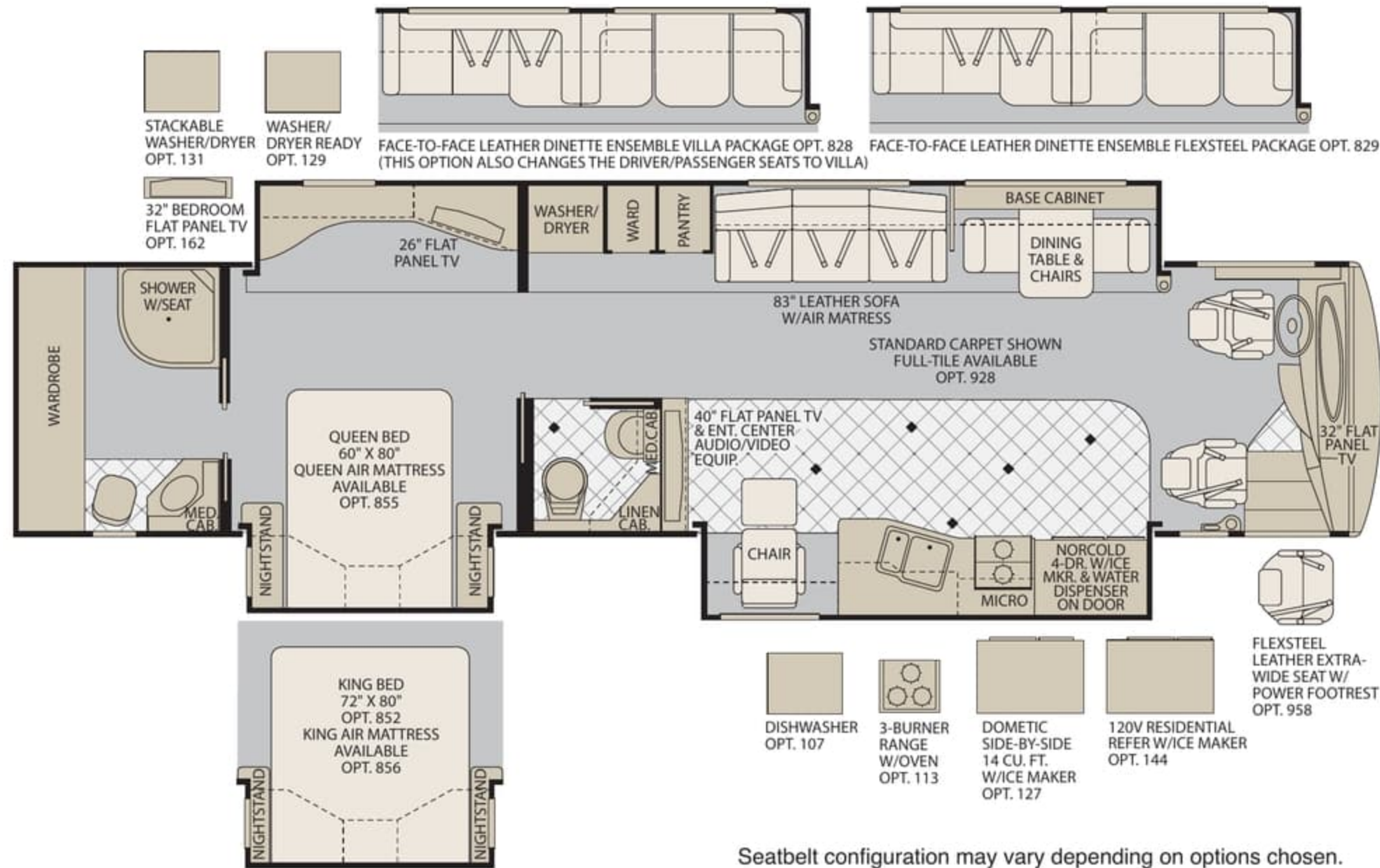
For more information, visit us at www.AmericanCoach.com or call us toll free at 800.854.1344

THE OFFICIAL LUXURY COACH OF THE AMERICAN ROAD



American Coach

IMPORTANT—PLEASE READ
 Product information, photography and illustrations included in this publication were as accurate as possible at the time of printing. For further product information and changes, please visit our website at www.AmericanCoach.com or contact your local American Coach dealer. Prices, materials, design and specifications are subject to change without notice. All weights, fuel, liquid capacities and dimensions are approximate. American Coach has designed its recreational vehicles to provide a variety of uses for customers. Each vehicle features optimal seating, sleeping, storage and fluid capacities. The user is responsible for selecting the proper combination of loads (i.e. occupants, equipment, fluids, cargo, etc.) to ensure that the vehicle's capacities are not exceeded.



Seatbelt configuration may vary depending on options chosen.

weights and measurements

GVWR (lbs) ¹	44,600	GCWR (lbs) ³	59,600
Front GAWR (lbs) ²	14,600	Hitch Rating Weight (lbs) [†]	15,000
Rear GAWR (lbs) ²	20,000	Tongue Weight (lbs) [†]	1,500
Tag Axle GAWR (lbs) ²	10,000		

dimensions and capacities

Wheelbase	302"
Overall Length ⁴	42' 11.5"
Overall Height (w/SatDome)	13' 1.5"
Overall Width (maximum) ^{5,6}	102"
Interior Height (maximum)	84"
Interior Width (maximum)	96"
Fresh Water Holding Tank (gal)	95
Grey Water Holding Tank (gal)	70
Black Water Holding Tank (gal)	40
Appliance Propane Tank (gal) (WC) ⁷	38
Water Heater Tank (gal)	N/A
Fuel Capacity (gal)	150
STD Girard Patio Awnings Front/Rear	18'/ 16'
OPT Girard Driver Side Awnings Front/Rear	N/A

Liquid Weight Reference: Water (gal) = (8.3 lbs/3.8 kgs) Fuel (gal) = 7.1 lbs/3.2 kgs)
Propane (gal) = (4.2 lbs/1.9 kgs)

Metric Conversion: Multiply pounds x 0.453 to obtain kilograms. Multiply gallons x 3.785 to obtain liters. Multiply liters x 61 to obtain inches.

chassis - cummins® 425

- Frame: Liberty Chassis
- Engine: ISL 425 HP, 8.8L
- Torque: 1200 lb-ft @ 1300 RPM
- Transmission: Allison® 3000 MH, 6 Speed w/Electronic Shifter
- Alternator Amps: 200 Amp, Leece Neville
- Tires: 295/80R 22.5 Goodyear® Radial

chassis - cummins® 500

- Frame: Liberty Chassis
- Engine: ISM 500 HP, 10.8L
- Torque: 1550 lb-ft @ 1200 RPM
- Transmission: Allison® "Gen-4" 4000 MH, 6 Speed w/Electronic Shifter
- Alternator Amps: 200 Amp, Leece Neville
- Tires: 295/80R 22.5 Goodyear® Radial

- GVWR (Gross Vehicle Weight Rating) is the maximum permissible weight of this fully loaded motor home. The GVWR is equal to or greater than the sum of the (UVW) unloaded vehicle weight plus the (CCC) cargo carrying capacity*.
- GAWR (Gross Axle Weight Rating) is the maximum permissible loaded weight a specific axle is designed to carry.
- GCWR (Gross Combined Weight Rating) is the value specified by the motor home manufacturer as the maximum allowable loaded weight of this motor home with its towed vehicle. Towing and braking capacities may be different. Refer to American Coach and chassis manufacturer's manuals for complete information.
- Length measured from front bumper to rear bumper (excludes accessories).
- Excludes safety equipment and awnings.
- Motor homes feature a body-width over 96" which will restrict your access to certain roads. Before purchasing, you should research any state and/or province road laws which may affect your usage.

- Tank manufacturer's listed water capacity (WC). Actual propane capacity is 80% of water listing as required by the safety code.
- N/A = Not Applicable
- *UVW and CCC are found on the cargo carrying capacity label in each RV.
- † The chassis manufacturer recommends the installation of a supplemental brake control system to activate the brakes on the vehicle or trailer you are towing. Hitch receiver ratings expressed are maximum for the hitch receiver installed and may require the purchase of additional equipment that is dependant on the weight of the towed load. Consult with hitch receiver manufacturer for further information.

AE42C_08F1, 11/07

For more information, visit us at
www.AmericanCoach.com or call us toll free
at 800.854.1344

THE OFFICIAL LUXURY COACH
OF THE AMERICAN ROAD



IMPORTANT—PLEASE READ

Product information, photography and illustrations included in this publication were as accurate as possible at the time of printing. For further product information and changes, please visit our website at www.AmericanCoach.com or contact your local American Coach dealer. Prices, materials, design and specifications are subject to change without notice. All weights, fuel, liquid capacities and dimensions are approximate. American Coach has designed its recreational vehicles to provide a variety of uses for customers. Each vehicle features optimal seating, sleeping, storage and fluid capacities. The user is responsible for selecting the proper combination of loads (i.e. occupants, equipment, fluids, cargo, etc.) to ensure that the vehicle's capacities are not exceeded.