

Discovery<sup>®</sup>  
CLASS A DIESEL

LIFE'S BEEN GOOD TO YOU.  
CELEBRATE IT.

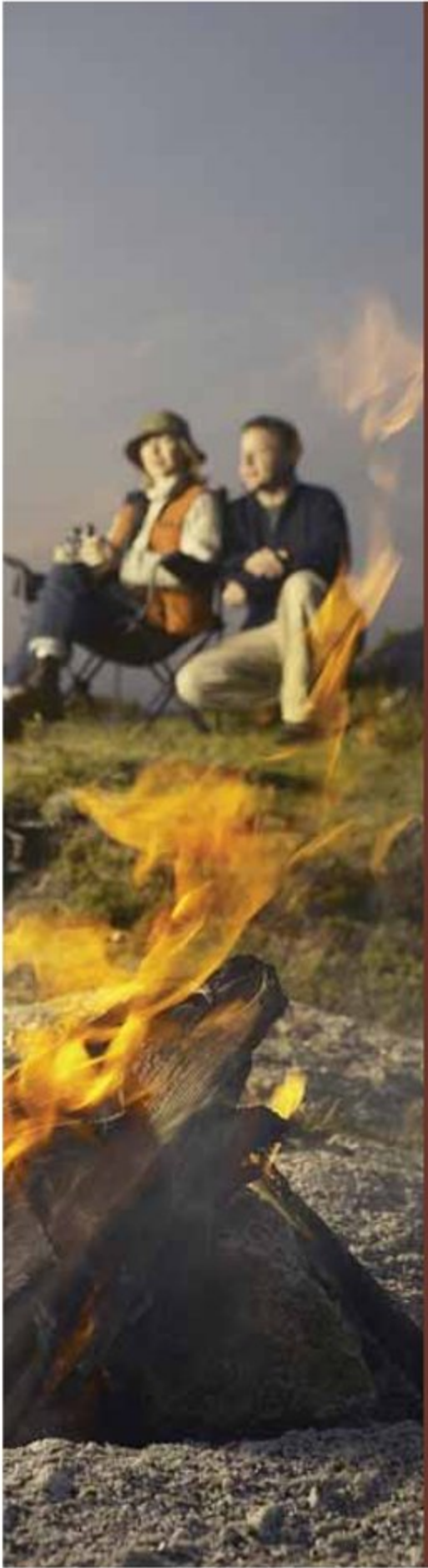
2008 Discovery



FLEETWOOD.







## WHEN THE WHEELS STOP TURNING, THE GOOD TIMES START ROLLING.

When your Discovery rolls into camp, everybody notices. And it's not just Discovery's commanding presence, with its gleaming paint and eye-catching graphics. People know the celebration is about to begin, sharing the fun with family and friends. And there's room for everybody, with a whopping 380 square feet of living space when the full-wall slide is extended (select models).

### Quality



*There's no cutting corners. Skilled craftsmen build every Fleetwood RV for maximum durability and longevity.*



DISCOVERY



THE NEW 40X MODEL (shown in Cognac interior décor with Windsor Birch wood cabinetry) is made for entertaining, with a giant 40" Samsung® LCD HDTV and entertainment center, euro-style recliners, and an entrance by the galley. Picture your party here!

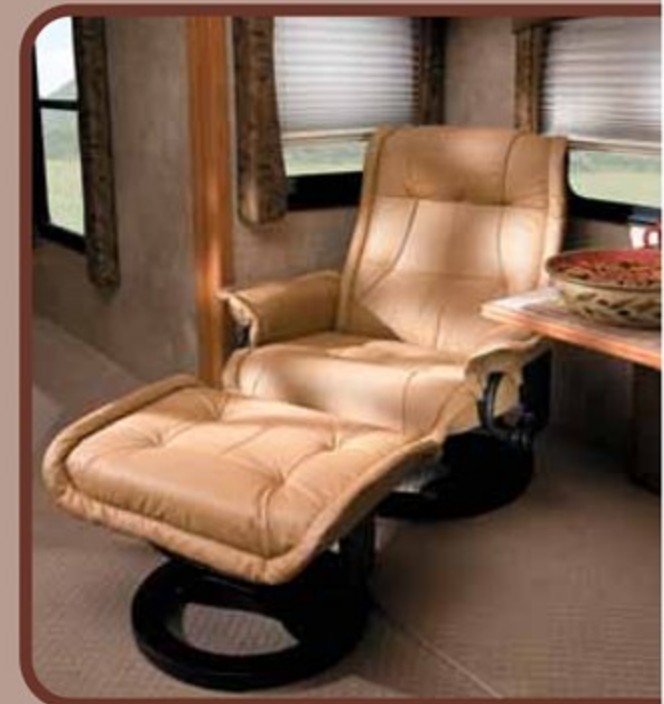
### WHY BUY DISCOVERY?







**THE ENTERTAINMENT CENTER** gives you a front row seat at the big game or latest movie. The big 26" Samsung LCD HDTV, DVD and home theater sound system (standard in all models except 40X) are nicely housed in sleek cabinetry. An auto-locating satellite dish is included, and an auto tracking option will track the satellites for you as you drive.



**TWO EURO-STYLE RECLINERS** come standard in the 40X model (optional on other models). Wrapped in genuine leather, these comfy lounging chairs are sure to be the most popular place to relax.

### **Step up to luxury.**

Discovery is the brand so many motor home owners aspire to own. Its power and luxury is truly impressive.

### **Built for comfort and convenience.**

In Discovery, you'll find ergonomically designed spaces that are more livable and comfortable — they just feel right.

### **Unmistakable quality.**

Discovery owners have high expectations, and Discovery does not disappoint. The exceptional quality of the components is consistent throughout.


### **Space for entertaining.**

The more the merrier, with a galley suitable for preparing big meals, countertop space for party trays and drinks, and plenty of room for guests.

### **Luxurious bed and bath.**

The oversized bedroom suite is built for relaxation with fine amenities and ample space to spread out.





## YOU'VE WORKED HARD. NOW IT'S TIME TO PLAY HARD.

You've paid your dues and you're ready to relax in comfort, with conveniences close at hand. Discovery provides dozens of standard features that others consider optional. The galley is a great example, with its upscale appliances, oversized refrigerator and designer appointments. It's sure to be the center of any celebration. But with Discovery's expansive interior, your party has room to spread out, too. The functional space has been designed for entertaining and hobbies, with plenty of horizontal surfaces.

### Trust



*More people trust Fleetwood. After all, we've spent over 50 years perfecting RVs, earning the loyalty of generations of RVers.*



DISCOVERY



**THE UNDER-COUNTER TV/DVD PLAYER** (optional) is sure to be the chef's favorite toy. You can flip down the 10" LCD TV, swivel it to the best view, and make a recipe along with your favorite cooking show. The system also includes a CD player and AM/FM radio.



**THE DINETTE** is a great place to watch the sun rise with a hot cuppa joe. When company arrives for pancakes, it can expand to seat six. Don't forget to feed Sparky – his food fits nicely in the pull-out drawers underneath.





**THE GALLEY** is set to serve up hot food and warm hospitality. Just place your hors d'oeuvres on the pull-out countertop extension that rolls out and locks into place (select models). The Norcold® refrigerator/freezer keeps all your drinks cold, with 12 cubic feet inside. You'll also enjoy a large GE® convection microwave oven and three-burner recessed cooktop.



**THE DOUBLE SINK WITH REMOVABLE COVERS** converts to extra countertop space in a flash. The covers are made from the same elegant solid surface material as the countertops, so they're also non-porous and resistant to stains and scratches.



**OVERHEAD CABINETS** store a ton of stuff, with deep compartments and adjustable shelves. The noise-absorbing shelf lining assures your dishes won't shake, rattle and roll in transit.



**FULLY EXTENDING DRAWERS** allow you to store things in the very back and they lock in transit. All the cabinetry has integrated toe kicks so it's comfortable to stand at the counter – try finding that in a competitive model.





## YOUR PERSONAL SPACE HAS NEVER BEEN SO SPACIOUS.

The 2008 Discovery boasts a new 30" slide in the bedroom (except 39L model), where most other coaches only slide 18" out. The result is a wide-open suite where you'll want to spend time relaxing, just like a fine hotel room. The bath offers equal luxury, especially the oversized bathroom in the 40X model. Because a little alone time can be nice, too.

### *Passion*



*We're truly passionate about the RV lifestyle. Fleetwood was founded by RV enthusiasts, and that tradition continues today.*



**DISCOVERY**



**THE BEDROOM DRESSER WITH ENTERTAINMENT CENTER** puts high-definition entertainment at the foot of your bed. Watch an action flick in bed on the 19" Samsung® LCD HDTV (or on a 26" LCD HDTV in models 39L and 40X) with a Dolby 5.1 home theater system. The dresser is upscale storage for everything from your socks to your jewelry box.



**THE DELUXE BATH** is bigger and more beautiful than ever. It includes a marble-look shower, a Fan-Tastic® fan, and a Moen® faucet crowning a solid surface vanity. The décor throughout flows like a designer bath.





**THE BED** beckons with a queen-size Restonic® mattress. The innersprings support your body, while the pillowtop provides the soft plushness of a pillow.

**THE BEDSIDE REMOTE CONTROL** allows you to customize the firmness on each side of your adjustable air mattress (optional).



**THE WASHER/DRYER COMBO** (optional) spins your clothes clean and dry as you roll down the road.



**THE MİRRORED WARDROBE** lets your clothes travel first-class, organized with racks and wire shelving. The cedar lining keeps moths away, and interior lighting shines down on your shirts and pants.



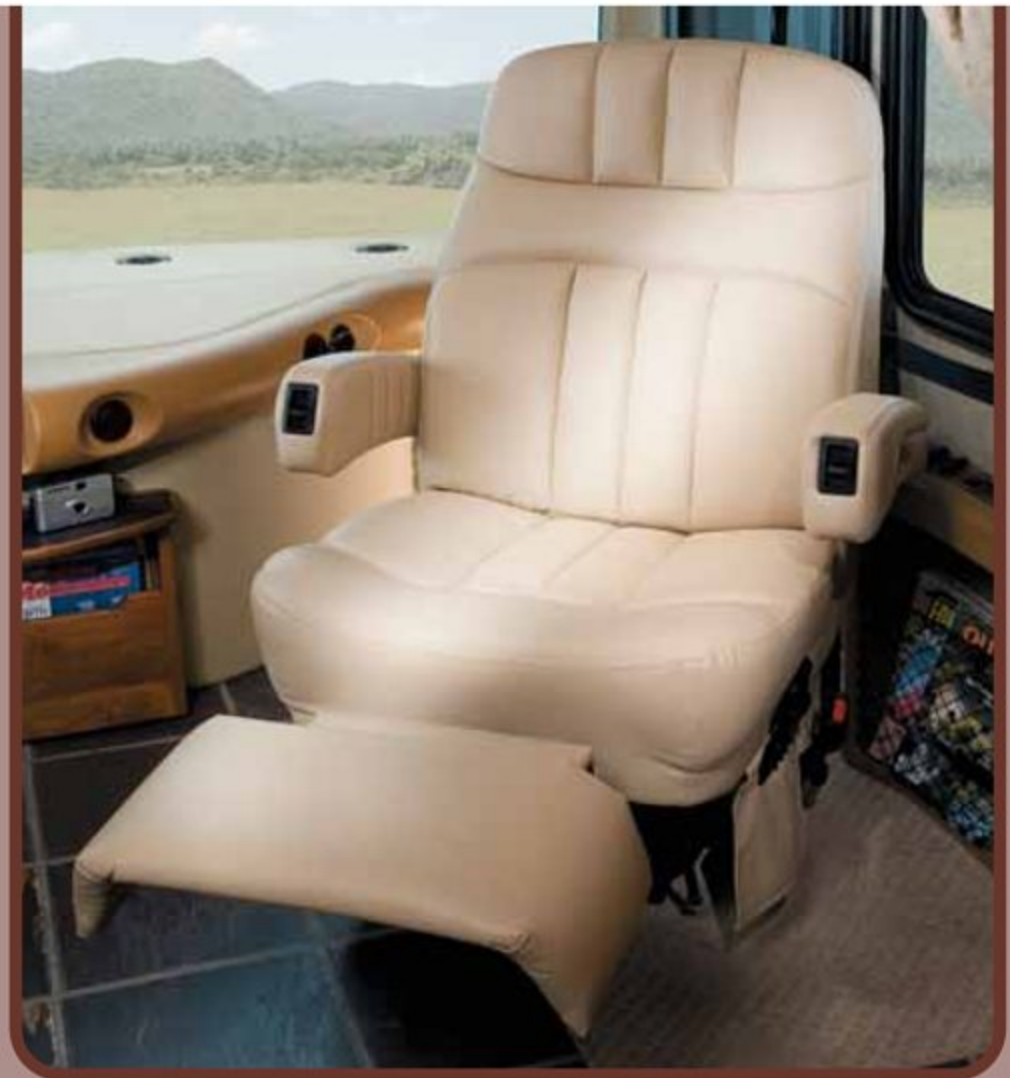


## DESIGNED FOR THOSE WHO HAVE BEEN AROUND THE BLOCK.

As an experienced motor home owner, you know quality components when you see them. And you'll find them everywhere you look in Discovery, from the powerful 350HP Cummins® diesel engine to the new one-piece panoramic windshield. Another great example is the new 2000 watt pure sine inverter, which delivers clean, pure AC power to enhance the operation of your quality electronics and appliances.



DISCOVERY



**THE PASSENGER SEAT** is designed for mile after mile of comfort. It's heated to take off the chill, and covered in soft, easy-clean Ultraleather.™ An optional electric footrest and power adjustments customize the feel.

**KEYLESS REMOTE ENTRY** lets you lock or unlock your Discovery with the push of a button. No more fumbling around with keys.







**THE COCKPIT AREA** wraps around you to deliver a superior driving experience. Even the steering wheel tilts and telescopes to suit your frame. The driver's seat has been specifically designed for comfort during those marathon drives, with a Flexsteel® frame and breathable Ultraleather™ covering.



**THE RADIO & BACK-UP MONITOR PANEL** does double duty. It includes an AM/FM radio with a CD player, and a color monitor that's GPS ready. The rear camera allows you to view the hitch, check the towed vehicle, and view a long distance behind it.



**THE POWER VISOR** is a new standard feature. If you need to reduce the sun's glare while driving, just push a button to adjust the power visors automatically. No more fumbling with visors while driving.



**THE ERGONOMIC INSTRUMENT PANEL** puts all controls within easy reach, and the large, backlit gauges are easy to read at a glance, even at night.

**TOUCH SENSOR TANK MONITORING SYSTEM** provides a more accurate reading because the sensors are mounted on the outside of the tanks. Read them on the Central Monitor Panel, where you can check Discovery's systems at a glance.





# DISCOVERY MAKES A STATEMENT IN EVERY STATE.

## DISCOVERY EXTERIORS

**IRON**  
SCHEME 1\*



**PACIFIC BLUE**  
SCHEME 1\*



**RED WINE**  
SCHEME 1\*



**STONE**  
SCHEME 1\*



**STONE**  
SCHEME 2\*



\* Each color is available in both Scheme 1 and Scheme 2 graphics. See your Fleetwood dealer or visit our website at [www.fleetwoodrv.com](http://www.fleetwoodrv.com) to view all graphic and color choices.



DISCOVERY



## PICK YOUR PARTY DECORATIONS.

You'll be hosting many celebrations in Discovery, but decorating for them is easy. Simply pick the color palette and wood finish you like best.

### TRUFFLE II

#### LIVING/DINING ROOM



*Dinette Cushions*



*Sofa*



*Ultraleather™  
Driver & Front  
Passenger Seats,  
Sofa (optional)*

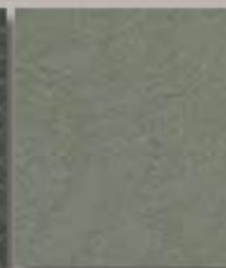
#### BEDROOM



*Bedspread*



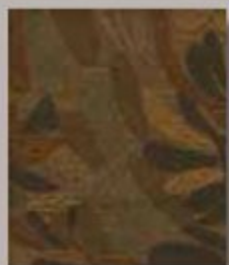
*Pillow Shams*



*Throw Pillows*

### COGNAC

#### LIVING/DINING ROOM



*Dinette Cushions*



*Sofa*



*Ultraleather™  
Driver & Front  
Passenger Seats,  
Sofa (optional)*

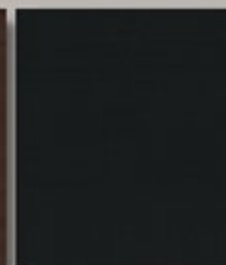
#### BEDROOM



*Bedspread*



*Pillow Shams*



*Throw Pillows*

### CAFE MILAN

#### LIVING/DINING ROOM



*Dinette Cushions*



*Sofa*



*Ultraleather™  
Driver & Front  
Passenger Seats,  
Sofa (optional)*

#### BEDROOM



*Bedspread*



*Pillow Shams*



*Throw Pillows*

## WOOD FINISHES



*Plantation Cherry*



*Summit Ash*



*Windsor Birch*



# DISCOVERY OUTMANEUVERS THE REST.

With a 55-degree wheel cut, Discovery is easier to maneuver in tight spaces like campgrounds and parking lots, as well as backing up and parking. That's a tighter turning radius than many competitors.

**THE SPOTLIGHT** (optional) makes it more fun to stay out after dark. It swivels 180 degrees to illuminate what the moonlight can't, and comes with a remote control.



**THE NEW CUMMINS® ISB 350HP ENGINE** delivers a ton of diesel power and 760 foot pounds of torque. That kind of power makes molehills out of mountains. Towing is a breeze, too.



**DIAMOND SHIELD** (optional) protects your paint finish on the lower front cap from paint chips and damage caused by road debris, bug acids and weathering. This clear, 8 mil. pressure sensitive urethane film will preserve the beauty of your Discovery for years to come.



- ① **ELECTRIC PATIO AND ENTRY DOOR AWNINGS** create an instant front porch. The patio awning includes a wind sensor to automatically retract if a strong breeze kicks up.
- ② **DUAL AIR CONDITIONING UNITS** on the roof provide maximum cooling and free up basement storage space.
- ③ **FULL-BODY PAINT** is carefully applied using a two-stage DuPont® paint process. So that mirror-like shine is not only impressive but durable.
- ④ **NEW ONE-PIECE WINDSHIELD** provides an uninterrupted, panoramic view of the road and horizon.



Vehicle shown in Stone Scheme 1 exterior graphics.





**SIDE VIEW CAMERAS** (optional) mounted on the left and right sidewalls, transmit to the driver's area monitor. The cameras are controlled by the driver to help you see blind spots in adjacent lanes. Once you're docked, they're handy for extra security.



**EXTERIOR GRILL AND KITCHENETTE** (optional) will be the biggest, baddest BBQ in the RV resort. Includes a propane grill, refrigerator, sink with hot and cold running water, storage areas, and even outlets for your margarita blender.



**EXTERIOR ENTERTAINMENT CENTER** (optional) lets you enjoy the fresh air and your favorite shows, movies or music. It features a 19" Samsung® LCD HDTV that folds neatly out of the way, and an AM/FM radio with a CD/DVD player.

- ① **NEW SIDE-SWING LUGGAGE DOORS** open to the side instead of upward. That gives you better access to the compartment and doesn't block others. (Select doors only.)
- ② **4-POINT LEVELING SYSTEM** levels your Discovery with a one-button push.
- ③ **STORAGE COMPARTMENTS** line both sides of the coach, and are individually lit to help you see your cargo after dark.
- ④ **THE FIBERGLASS REAR CAP** shows Discovery is stylish from front to back. Its high-mounted taillights can be seen over most towed vehicles.

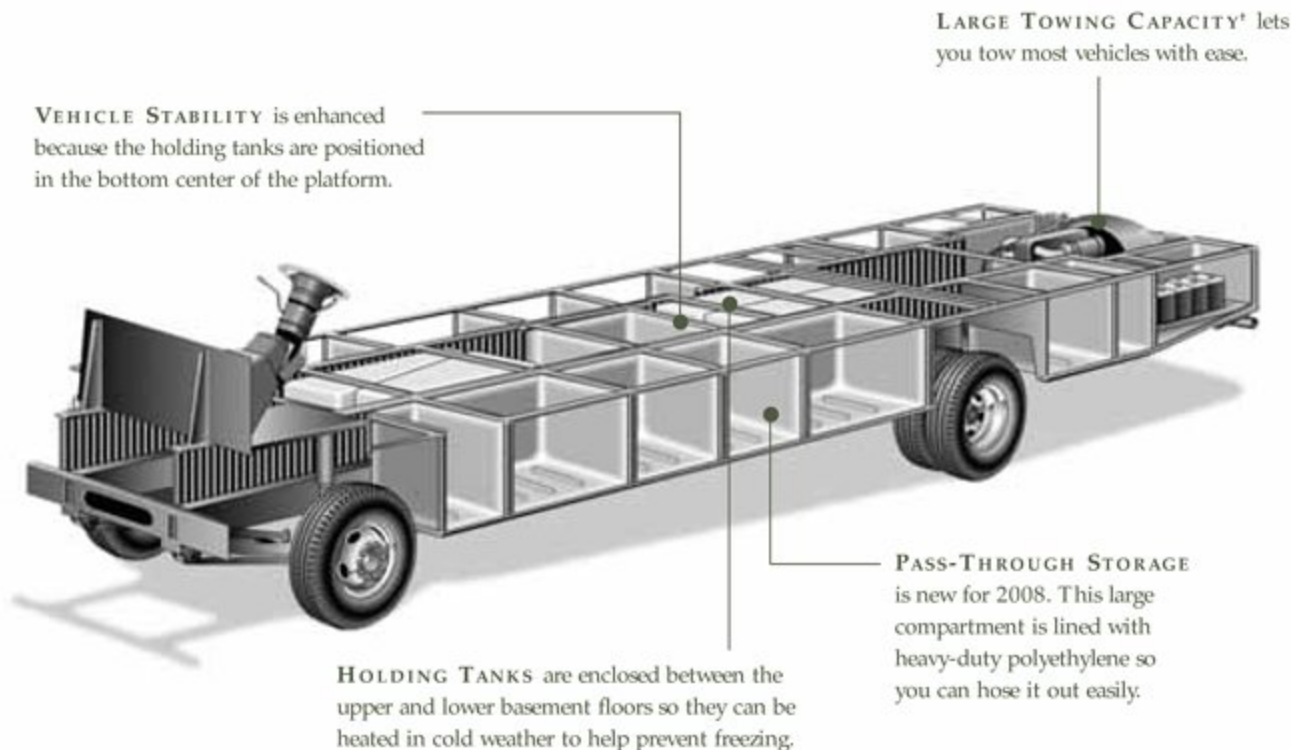


Vehicle shown in Stone Scheme 1 exterior graphics.



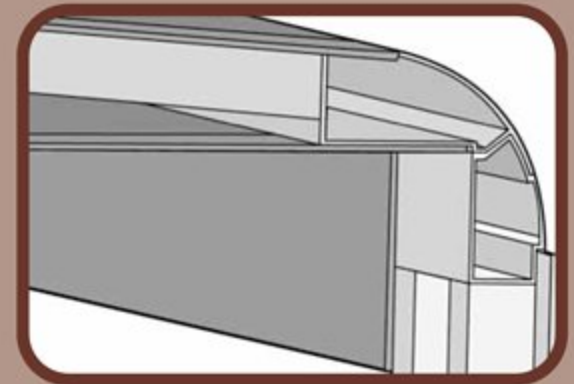
# THE POWER PLATFORM®. BECAUSE YOU HAVE A LOT RIDING ON THIS.

Fleetwood's patented Power Platform® is as strong as they come. It begins with two ten-inch steel I-beams welded to the chassis, with steel outriggers extending outward. Together, they create a basement for the fluid tanks and storage, while supporting the floor, walls and roof with a rigid steel frame. The 2008 models feature pass-through storage along with the EZ Store Compartment to provide an abundant amount of storage.

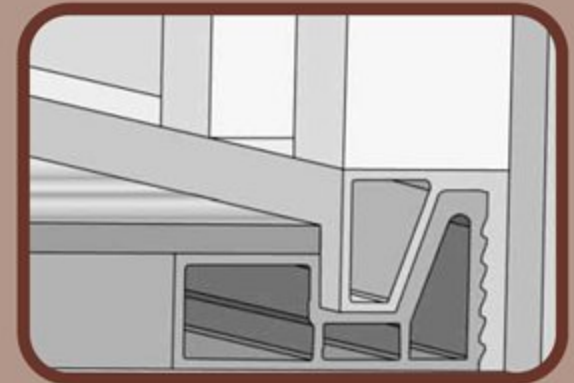


† The chassis manufacturer recommends the installation of a supplemental brake control system to activate the brakes on the vehicle or trailer you are towing. Hitch receiver ratings expressed are maximum for the hitch receiver installed and may require the purchase of additional equipment that is dependent on the weight of the towed load. Consult with hitch receiver manufacturer for further information.

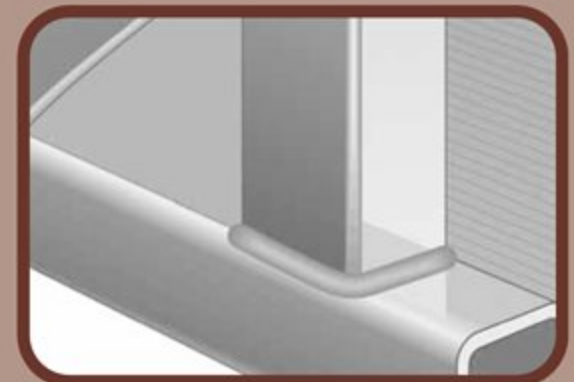
Drawings are for illustrative purposes only to highlight aspects of motor home construction. Actual motor home design depends on model and is subject to change.



INTERLOCKING CEILING-TO-SIDEWALL CONSTRUCTION helps keep the box square. This assures a proper cabinet fit.



INTERLOCKING FLOOR-TO-SIDEWALL CONSTRUCTION locks tightly to keep out water, dust and noise, and helps eliminate squeaks and rattles.



VACU-BOND® SIDEWALL CONSTRUCTION creates a strong, weather-resistant structure. All sidewalls, floors and ceilings are Vacu-bonded to a durable metal frame, far superior to the pinch roll method our competitors often use.



DISCOVERY





**PASS-THROUGH STORAGE WITH SIDE-SWINGING DOORS** holds chairs, sports gear and more. You can take items out from either side. And the new side-swinging luggage doors make it easier to access your stuff, because the doors swing out of the way.



**THE PULL-OUT BASKET** keeps your smaller items together so they don't get scattered. Got a great deal on bulk soda or water? Here's the place to keep it.



**THE EZ STORE COMPARTMENT** is the perfect place to store extra-long equipment, such as a ladder or casting rods. The compartment moves with the slide-out so you don't have to stoop underneath to get your stuff.

## WE ADDED MORE STORAGE SO YOU DON'T HAVE TO TRIM YOUR PACKING LIST.

Now Discovery offers even more room for all those toys, gadgets and gear that make traveling more fun. We've increased the storage volume in every model, from the size of the bedroom overhead cabinetry to the exterior pass-through storage.

## PEACE OF MIND INCLUDED, STANDARD.

Fleetwood engineers have built dozens of safety features into Discovery, from the 3-point seat belts to the leveling jacks that automatically retract if the drive gear is engaged. Before you head out for the wild blue yonder, be sure to check the pre-trip safety inspection checklist that's built into the Information Center monitor. On the road, you'll appreciate the Sachs shocks, which improve handling. These are just a few of the safety features we've included to provide you with extra peace of mind.

### Safety



*You've got precious cargo. So we've engineered dozens of innovative safety features into our motor homes to give you more peace of mind.*



35H



Interior Storage Capacity: 156 cu. ft.  
Exterior Storage Capacity: 115 cu. ft.

- More compact triple slide luxury coach
- Opposing slide-outs in the galley and living area for maximum livability
- Available Options: 113, 126, 127, 200, 497, 833, 873

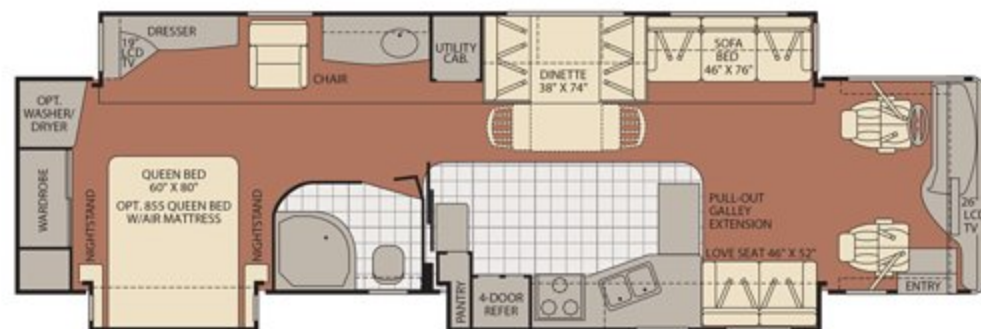
39L



Interior Storage Capacity: 198 cu. ft.  
Exterior Storage Capacity: 162 cu. ft.

- Seating for up to 13 people in the huge dining and living room
- Cozy window seat in the second bedroom slide-out
- Available Options: 113, 126, 127, 173, 197, 200, 497, 821, 832, 833, 874

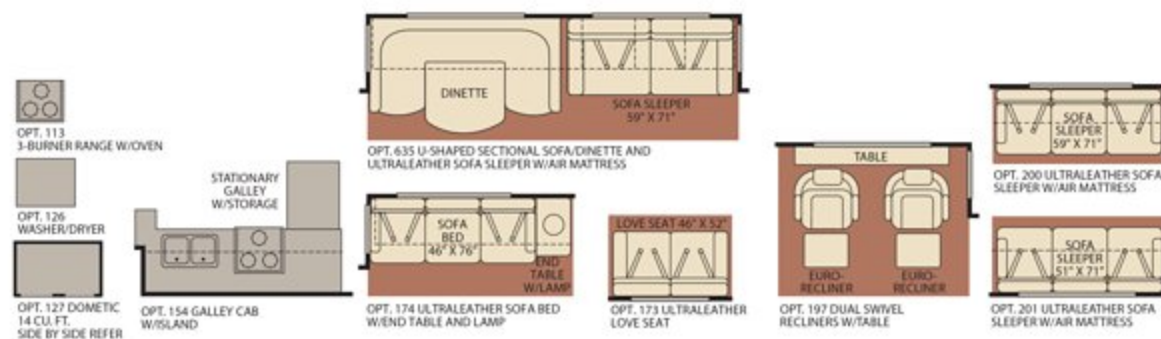
39R



Interior Storage Capacity: 260 cu. ft.  
Exterior Storage Capacity: 201 cu. ft.

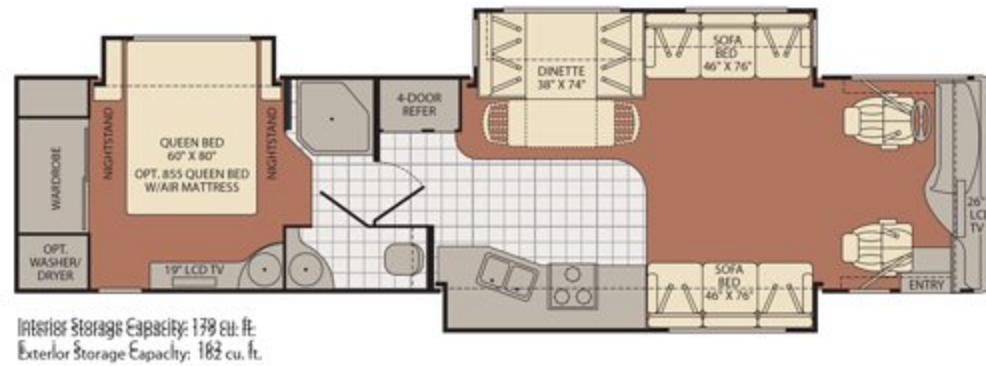
- Industry leading full-wall slide with opposing slide in the living room
- Residential dresser in the bedroom with multiple drawers
- Available Options: 113, 126, 127, 173, 197, 200, 497, 821, 832, 833, 874

## OPTIONS



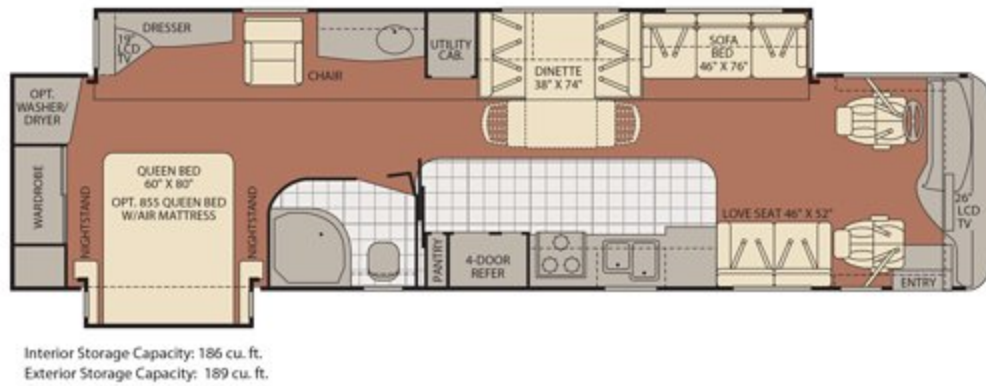


39S



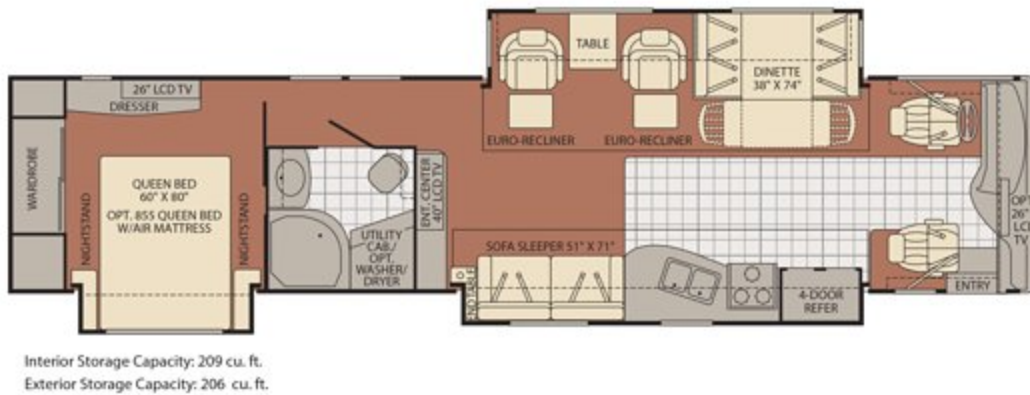
- Wide open living room and galley for extended stays
- Second sink in the bedroom for more versatility
- Available Options: 113, 126, 127, 154, 197, 200, 497, 804, 832, 833

39V



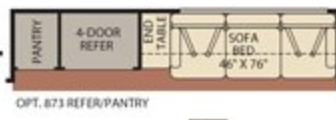
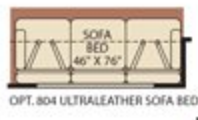
- Industry leading full-wall slide floor plan
- Large counter space for functional entertaining
- Available Options: 113, 126, 127, 173, 197, 200, 491, 497, 832, 833

40X



- Industry leading mid-coach home theater floor plan
- Side aisle bathroom for maximum privacy and space
- Available Options: 113, 126, 127, 174, 201, 497, 635, 832, 833

Seatbelt configuration may vary depending on options chosen.



## Service



Help is nearby. When you need an upgrade or repair, you'll find facilities all across North America and more than 1,000 dealers ready to assist you.



## STANDARD FEATURES

### INTERIOR Throughout

- 10 Gallon Quick Recovery Water Heater w/Direct Spark Ignition (Gas/Electric)
- 20,000/25,000 BTU Dual Furnaces
- 20,000/30,000 BTU Dual Furnaces (39V)
- 84" Interior Ceiling Height
- Complete TuffPEX Plumbing System
- Crown Molding
- Day/Night Pleated Shades
- Deluxe Roller Bearing, Full Extension Drawer Guides & Transit-Ship Locks
- Demand Water Pump w/Filter
- Dual Roof Mounted A/C High Efficiency w/Solar Panel & Chill Grill on Front A/C
- Hardwood Cabinet Doors/Drawers
- Laminate Floor Tile
- Plush Wall-to-Wall Carpet w/Carpet Pad
- Wall Sconces
- Wall Switches (Includes Switches for Ceiling Lights & Vents)
- Water Heater Bypass
- Whole Coach Water Filtration System
- Wood Finish Return Air Intake for Furnace

### Driver Convenience

- Adjustable 3 Point Seat Belts at Driver & Front Passenger Seats (with adjustable shoulder straps)
- AM/FM/CD Stereo, Sirius Satellite Radio® Ready
- Color Back-Up Monitor
- Auxiliary Start Circuit
- Battery Disconnect System
- CB Radio Ready
- Cruise Control
- Driver Side Manual Pull Down Shade
- Driver/Front Passenger Ultraleather™ Captain's Chairs w/Reclining Back/Slide Controls w/Power Driver Seat
- High Output Auto A/C Heater Combo
- Passenger Armrest w/Integrated Magazine Rack
- Power Driver/Front Passenger Sun Visors
- Radio Switch Main/Auxiliary Power
- Snack Tray/Service Door at Dash
- Soft Surface Automotive Dash
- Tilt/Telescoping Steering Wheel

### Galley

- 1.4 cu.ft. Convection Microwave Oven
- 3 Burner, High Output Cooktop w/Sealed Burners
- Adjustable Cabinet Shelves (Select Cabinets)
- Fan-Tastic® Power Roof Vent w/Wall Switch
- Light/Power Range Hood
- Norcold® 12 cu.ft. 4 Door Refrigerator w/Ice Maker and Water Dispenser
- Roll-Out Countertop (39L & 39R)
- Moen® Galley Faucet w/Pullout Sprayer
- Six Person Pull-Out Dinette Table (Select Models)
- Slide-Out Dinette Drawers w/Latches
- Soap Dispenser
- Solid Surface Countertop, Sink & Range Covers
- Under Galley Shelving & Wastebasket
- Window Over Sink
- Wood Trim Dinette Tabletop (Select Models)

### Living Room

- Samsung® 26" LCD HDTV (40" in 40X)
- Samsung® AM/FM/DVD Home Theater Sound System w/Hidden Surround Sound Speakers
- Flexsteel® Residential Seat Styling
- TV Antenna w/ Signal Booster

### Bedroom

- Samsung® 19" LCD HDTV (26" in 40X & 39L)
- Samsung® AM/FM/DVD Home Theater w/5.1 Dolby® Surround Sound Speakers
- Slide-Out Features Overhead Cabinet
- Dresser/Vanity w/Second Sink (Some Models)
- Bedspread w/Décor Pillows
- Coffin Ceiling
- Remote Generator Start
- Restonic® Deluxe Pillow Top Innerspring Mattress
- Ventilated Rear Wardrobe w/Cedar Lining, Carpeted Floor & Wire Organizer
- Wardrobe Lighting

### Bathroom

- A/C Venting
- Cabinet Toe Kicks
- Coordinated Bath Accessories
- Fan-Tastic® Power Roof Vent w/Wall Switch
- Glass Shower w/Skylight and Low Threshold
- Moen® Faucet
- Hardwood Bath Door/Trims
- Lighted Assist Handle
- Make-Up Lights (Some Models)
- Porcelain Toilet w/Water Saver

### Safety/Convenience

- Carbon Monoxide Detector/Alarm
- Energy Management System (EMS) w/Soft Start
- Fire Extinguisher
- Multiple Seatbelt Locations
- Propane Detector/Alarm
- Smoke Detector/Alarm

### EXTERIOR Throughout

- 120V/12V AC/DC Converter
- 120V/12V Wire Raceways
- 2000 Watt Pure Sine Wave Inverter w/Remote
- 4 Point Automatic Levelers
- 50 Amp Service
- 8.0 KW Onan® Quiet Diesel Generator
- Awning Rail/Drip Molding (Both Sides)
- Choice of 4 Colorways in 2 Graphic Schemes
- Doorside Patio Receptacle
- DSS Auto Locating Satellite Dish (Covered)
- Dual Pane Windows w/Screens
- Fiberglass Front Quarter Panels
- Fiberglass Wheel Well Trims
- Full-Body Paint
- Two Stage Luggage Door Struts
- Weather Pro Power Awnings (Patio Awning Includes Wind Sensor)
- Fiberglass Front/Rear Caps w/High Mounted Taillights
- Water Pump Switch (Multiple Locations)

### Automotive

- 10,000 lb. Weight Distributing Hitch Receiver w/7 Pin Electrical Hook-Up†
- Aluminum Wheels
- Dual Fuel Fill (One on Each Side)
- Fog Lamps
- Mud Flaps
- Rear Vision Camera
- Remote Keyless Entry
- Single Motor Denso Windshield Wipers w/Wet Arm
- Underhood Utility Light
- Large One-Piece Bonded-in Windshield
- 350HP Cummins® ISB 6.7L Engine
- Freightliner® Chassis
- Chrome Exterior Mirrors

### Safety/Convenience

- 20' Sewer Hose
- 4 Wheel ABS Brakes
- Automotive Safety Glass
- Daytime Running Lights
- Easy Sweep Laminate Flooring at Entry Step
- Entry Door w/Screen Door & Deadbolt Lock
- Four 6V/Deep Cycle House Batteries
- Lighted Entry Assist Handle
- Power Entry Step
- Remote/Heated Rear View Mirrors
- Toilet Tank San-T-Rush™ System
- Touch Sensor Tank Monitoring System
- Utility Compartment w/Exterior Shower

### Storage

- Continuous One-Piece Compartment Bulb Seal
- EZ Store Compartment on Living Area Slide-Outs
- Pass Through Storage (Except 35H)
- Side Swinging Luggage Doors (Selected areas)
- Gas Lift Strut Supports (Two Stage Under Slide Box)
- Insulated Aluminum Luggage Doors w/Single Paddle Metal Latches & Stainless Steel Hinges
- Large Compartment Doors at EZ Store
- Lighted Luggage Compartments
- Rotomolded Polyethylene Luggage Compartments
- Spare Tire Compartment

### Body Structure

- Aluminum Interlocking Floor/Wall/Ceiling Framing
- Color Coordinated Royal Tuff-Ply Roof
- Heated Water & Holding Tank Compartments
- Power Platform® Construction (Fleetwood Exclusive)
- Royal Tuff-Ply Radius Roof w/Ducted A/C
- Vacu-bond® Upper/Lower Floors

## OPTIONS

### INTERIOR Throughout

- Central Vacuum System
- CSA Package (Canadian Specs)\*\*
- Washer/Dryer
- Water Heater 16 Gallon Output

### Driver Convenience

- Power Passenger Seat w/Power Footrest
- Blind Spot/Security Vision Package
- Automatic Generator Start System

### Galley

- 14 cu.ft. Dometic® Frost-Free Refrigerator
- 3 Burner Sealed Drop-In Range w/Oven
- Rip Down 10" LCD TV w/DVD player

### Living Room

- Ultraleather™ Love Seat (Select Models)
- Ultraleather™ Sofa Bed
- Ultraleather™ Sofa Sleeper w/Air Mattress
- Samsung® 26" LCD HDTV in Front Overhead (40X)
- Computer Workstation at Dinette
- Dual Free-Standing Ultraleather™ Recliners
- Free-Standing Table & Chairs
- Free-Standing Dinette w/Credenza
- Free-Standing Ultraleather™ Euro Recliner (39V)
- Recliner w/Table (Select Models)
- Desk (Select Models)

### EXTERIOR Throughout

- Exterior Entertainment Center w/Samsung® 19" LCD HDTV and Stereo
- Exterior Grill and Kitchenette
- Heat Pumps
- Window Awning Package

### Automotive

- Diamond Shield Clear Front Protective Mask
- Spotlight w/Remote Control

## FLEETWOOD ADVANTAGES

- Full-Wall Slide (Patent Pending)
- 350HP Cummins® ISB 6.7L Engine
- Vacu-bond® Walls w/Smooth High Gloss Exterior Tuff-Coat® Fiberglass
- Power Platform® Construction (Fleetwood Exclusive)
- Large One-Piece Bonded-in Windshield
- Pass Through Storage
- Side Swinging Luggage Doors (Selected Areas)
- Samsung® 26" LCD HDTV in Living Room, Samsung® 19" LCD HDTV in Bedroom
- Deluxe Roller Bearing, Full Extension Drawer Guides
- 84" Interior Ceiling Height

\*\* CSA Standards may require substitution or deletion to achieve conformance



## WEIGHTS AND MEASUREMENTS

### FREIGHTLINER® CHASSIS

MODELS	35H	39L	39R	39S	39V	40X
Engine Displacement (Liters)	6.7	6.7	6.7	6.7	6.7	6.7
Wheelbase (Inches)	208"	252"	252"	252"	252"	276"
GVWR (lbs) <sup>†</sup>	31,000	31,000	31,000	31,000	31,000	31,000
Front GAWR (lbs) <sup>‡</sup>	12,000	12,000	12,000	12,000	12,000	12,000
Rear GAWR (lbs) <sup>‡</sup>	19,000	19,000	19,000	19,000	19,000	19,000
GCWR (lbs) <sup>‡</sup>	41,000	41,000	41,000	41,000	41,000	41,000
Hitch Rating Weight (lbs) <sup>†</sup>	10,000	10,000	10,000	10,000	10,000	10,000
Tongue Weight (lbs) <sup>†</sup>	1,000	1,000	1,000	1,000	1,000	1,000
Fuel Capacity (gal)	90	90	90	90	90	90

### DIMENSIONS & CAPACITIES

MODELS	35H	39L	39R	39S	39V	40X
Overall Length <sup>§</sup>	35' 4"	39' 0"	39' 0"	39' 0"	39' 0"	41' 0"
Overall Height (with A/C)	12' 10"	12' 10"	12' 10"	12' 10"	12' 10"	12' 10"
Overall Width (maximum) <sup>¶</sup>	102"	102"	102"	102"	102"	102"
Interior Height (maximum)	84"	84"	84"	84"	84"	84"
Interior Width (maximum)	96"	96"	96"	96"	96"	96"
Fresh Water Holding Tank (gal)	86	86	86	86	86	86
Grey Water Holding Tank (gal)	50	50	50	50	50	50
Black Water Holding Tank (gal)	50	50	50	50	50	50
Appliance Propane Tank (gal) (WC) <sup>†</sup>	24.5	38	38	38	38	38
Water Heater Tank (gal)	10	10	10	10	10	10

Liquid Weight Reference: Water (gal) = (8.3 lbs/3.8 kgs) Fuel (gal) = (7.1 lbs/3.2 kgs) Propane (gal) = (4.2 lbs/1.9 kgs)

Metric Conversion: Multiply pounds x 0.453 to obtain kilograms. Multiply gallons x 3.785 to obtain liters. Multiply liters x 61 to obtain cubic inches.

1. GVWR (Gross Vehicle Weight Rating) is the maximum permissible weight of this fully loaded motor home. The GVWR is equal to or greater than the sum of the (UVW) unloaded vehicle weight plus the (CCC) cargo carrying capacity.
2. GAWR (Gross Axle Weight Rating) is the maximum permissible loaded weight a specific axle is designed to carry.
3. GCWR (Gross Combined Weight Rating) is the value specified by the motor home manufacturer as the maximum allowable loaded weight of this motor home with its towed vehicle. Towing and braking capacities may be different. Refer to Fleetwood and chassis manufacturer's manuals for complete information.
4. Length measured from front bumper to rear bumper (excludes accessories).
5. Excludes safety equipment and awnings.
6. Motor homes feature a body-width over 96" which will restrict your access to certain roads. Before purchasing, you should research any state and/or province road laws which may affect your usage.
7. Tank manufacturer's listed water capacity (WC). Actual propane capacity is 80% of water listing as required by the safety code.

- † The chassis manufacturer recommends the installation of a supplemental brake control system to activate the brakes on the vehicle or trailer you are towing. Hitch receiver ratings expressed are maximum for the hitch receiver installed and may require the purchase of additional equipment that is dependent on the weight of the towed load. Consult with hitch receiver manufacturer for further information.

N/A = Not available at time of printing.

\* UVW and CCC are found on the cargo carrying capacity label in each RV.

**IMPORTANT— PLEASE READ:** Product information, photography and illustrations included in this publication were as accurate as possible at the time of printing. For further product information and changes, please visit our website at [www.fleetwoodrv.com](http://www.fleetwoodrv.com) or contact your local Fleetwood dealer. Prices, materials, design and specifications are subject to change without notice. All weights, fuel, liquid capacities and dimensions are approximate. Fleetwood has designed its recreational vehicles to provide a variety of uses for its customers. Each vehicle features optimal seating, sleeping, storage and fluid capacities. The user is responsible for selecting the proper combination of loads (i.e. occupants, equipment, fluids, cargo, etc.) to ensure that the vehicle's capacities are not exceeded.

### CHASSIS

Model: Freightliner® XC-Series  
 Engine: Cummins® ISBXT 6.7L  
 Torque: 750 lb-ft  
 Alternator: 170 Amp Leece Neville®  
 Transmission: Allison® 3000 MH 6-Speed  
 Horsepower: 350 HP

### Warranty



Exclusive RV ownerscare warranty.  
 See your Fleetwood dealer for details.

**Discovery®**  
 CLASS A DIESEL





#### RV OWNERCARE\*

Limited one-year/15,000-mile coach warranty and three-year/50,000-mile structural warranty, whichever occurs first, and it is fully transferable for the first 12 months. RV OWNERCARE is one of the RV industry's most comprehensive programs and includes systems, appliances, components and construction, with no deductible and no service charge. RV OWNERCARE coverage is provided from a company that will be around in the future to service your needs. See your nearest Fleetwood dealer for a full explanation of benefits and restrictions.

#### CONTACT US

To locate a dealer near you, visit our website at [www.fleetwoodrv.com](http://www.fleetwoodrv.com) or call 1-800-444-4905. We can also be contacted at Fleetwood Customer Relations, P.O. Box 1007, Decatur, IN 46733.

#### FLEETWOOD TRAVELCADE CLUB

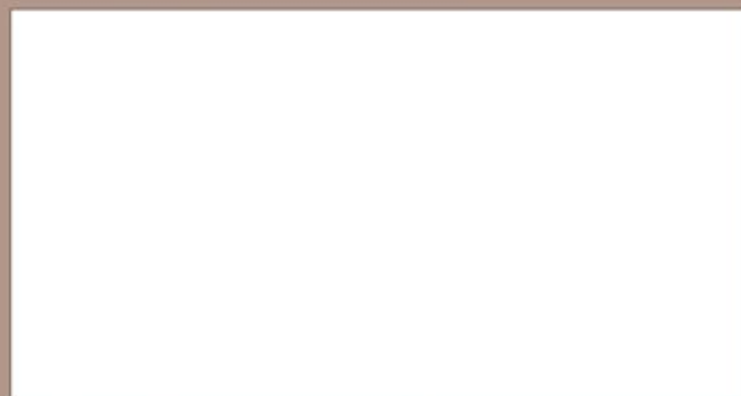
As a Fleetwood owner, you're eligible to become a member of the Fleetwood Travelcade Club. It's a perfect way to meet other Fleetwood owners who love to travel across America and share in the RV lifestyle. Call (877) 577-2560 or visit our website at [www.fleetwoodrv.com/owners\\_clubs](http://www.fleetwoodrv.com/owners_clubs) to learn more and join the fun! For Discovery specific club information visit: Discovery Owners Association at [www.discoveryowners.com](http://www.discoveryowners.com) or Discovery International of FMCA at [www.difmca.com](http://www.difmca.com).



tread lightly!  
LEAVING A GOOD IMPRESSION



YOUR LOCAL FLEETWOOD DEALER IS



\*For complete info see your Fleetwood dealer.

©2007. Fleetwood Enterprises, Inc.  
Printed in the USA. Inventory Control Number DI08B2, 11/07.  
Model Year 2008, Second Edition.

#### IMPORTANT—PLEASE READ

Product information, photography and illustrations included in this publication were as accurate as possible at the time of printing. For further product information and changes, please visit our website at [www.fleetwoodrv.com](http://www.fleetwoodrv.com) or contact your local Fleetwood dealer. Prices, materials, design and specifications are subject to change without notice. All weights, fuel, liquid capacities and dimensions are approximate. Fleetwood has designed its recreational vehicles to provide a variety of uses for customers. Each vehicle features optimal seating, sleeping, storage and fluid capacities. The user is responsible for selecting the proper combination of loads (i.e. occupants, equipment, fluids, cargo, etc.) to ensure that the vehicle's capacities are not exceeded.

### WHY FLEETWOOD?



#### Quality

There's no cutting corners. Skilled craftsmen build every Fleetwood RV for maximum durability and longevity.



#### Trust

More people trust Fleetwood. After all, we've spent over 50 years perfecting RVs, earning the loyalty of generations of RVers.



#### Passion

We're truly passionate about the RV lifestyle. Fleetwood was founded by RV enthusiasts, and that tradition continues today.



#### Safety

You've got precious cargo. So we've engineered dozens of innovative safety features into our motor homes to give you more peace of mind.



#### Service

Help is nearby. When you need an upgrade or repair, you'll find facilities all across North America and more than 1,100 dealers ready to assist you.



#### Warranty

Exclusive RV ownercare warranty.  
See your Fleetwood dealer for details.

