

ADMIRAL[®]
2008



HOLIDAY RAMBLER[®]

This is Living[®]





This is Living®



30SFS | ALPINE | NEWPORT CHERRY

IT'S TIME TO GET ROLLING.

We're all looking for a little adventure, and the 2008 Admiral is the perfect choice to get out on the road and find some. An affordable price and long list of features make it ideal for first-time RV owners. You'll be amazed at everything it offers, starting with the stylish interior. Admiral is filled with comfortable furniture, including a queen bed with nightstands, an arched back booth dinette, and easy-bed sofas — all standard. Forget about campfire cooking as you prepare memorable meals in the roomy kitchen

complete with a large double-door refrigerator and convection microwave. All new solid surface kitchen countertops with backsplash provide plenty of room and clean up beautifully — with a little help from the hi-rise faucet with soap dispenser. The Admiral shines in the private areas, too. The bedroom is comfortable and inviting with plush carpeting, beautiful wardrobes and a 20-inch TV, while the bathroom features a new china toilet with sprayer and a tinted skylight.

HR ADMIRAL®



◆◆ PANAVIEW™

1-PIECE WINDSHIELD

This is Living®



30SFS | ALPINE | NEWPORT CHERRY

PACK IT UP AND GO.

One look at the Admiral's new great-looking dash and you'll be itching to hit the road. Admiral is designed to be easy to drive with an automotive-style instrumentation panel and room for an optional GPS system. The exclusive Panaview™ 1-piece windshield gives you an unobstructed view. And, to keep your view clear in any weather, we added power heated remote exterior mirrors. We've also included rear-vision prep, so adding an optional rear vision system is an easy choice. The cockpit also houses

an array of entertainment. There's a CD player/radio with Sirius-ready compatibility in the dash and an impressive 26-inch LCD television overhead — the DVD player is optional. Other cool options include a washer/dryer combination, central vacuum system and a driver's side door with electric window. Two of the most convenient *standard* features are the pass-through storage compartment and side-hinged baggage doors, which make loading and unloading quick and easy. So climb aboard. Your adventure awaits.

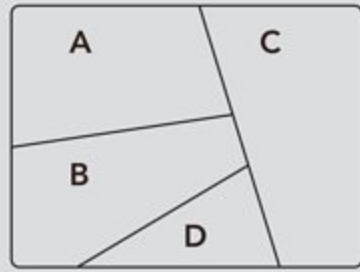


MEET YOUR MATCH.

The 2008 Admiral looks great inside and out. This year, we've revamped the exterior with redesigned graphics and new front-molded fiberglass caps with a large chrome grill. And the inside is just as impressive with your choice of three beautiful decors and two wood finishes. Mix and match to come up with the overall look that best suits your style.



- A. BEDSPREAD
- B. SOFA
- C. ACCENT
- D. CARPET



**BETTER
STAIN
PROTECTION**



Manufactured in, not added on. For added protection against stains, soil repellent is applied to virtually all upholstery fabric during the finishing process for superior coverage.*

* Brand and application of upholstery fabric protection may vary depending on date recreational vehicle was manufactured.



ESSEX



ALPINE



NEWPORT CHERRY



CHAMPAGNE SELECT

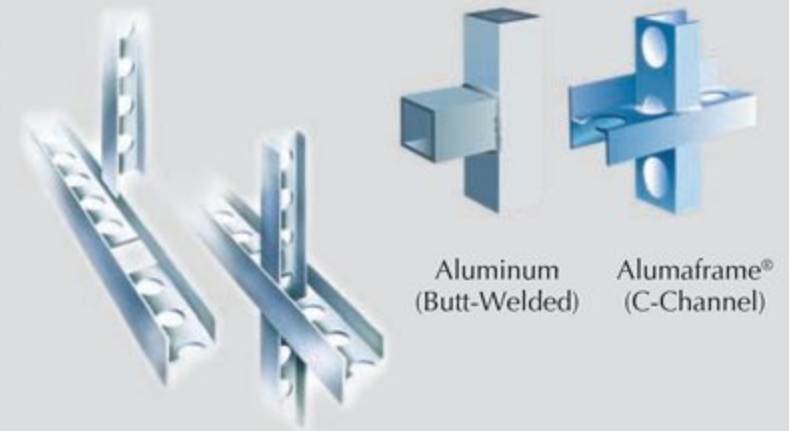


ESCAPE



ALUMAFRAME® CONSTRUCTION SINCE 1966:

The Admiral features Holiday Rambler's exclusive Alumaframe® Superstructure. Our revolutionary system of aluminum C-Channel crossmembers runs the entire length of the unit, with double-welded intersections for added strength. This rigid design is both lighter and sturdier than tubular aluminum frames — and much more reliable than butt-welded or screwed joint designs. From dirt roads to potholes, you can count on Alumaframe® to handle the relentless stresses of the road and provide superior structural integrity for many years to come.



SLIDE-OUT CONSTRUCTION:

When you purchase a Holiday Rambler, you can be sure the slide-out boxes are some of the strongest and most reliable you'll find anywhere. They feature our exclusive multi-layer construction to give you maximum insulation and to reduce the chance of warping, twisting or shifting.



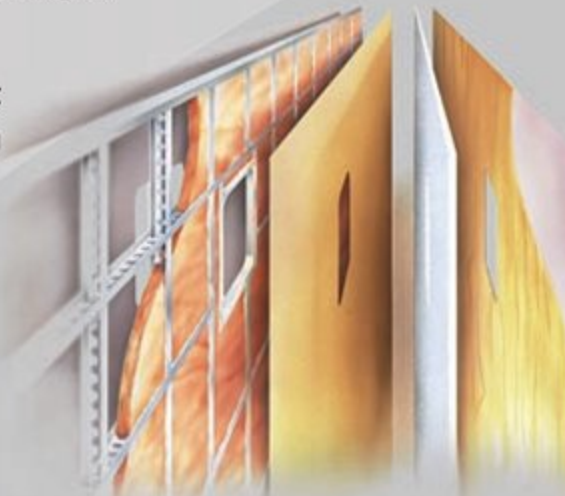
9-LAYER ROOF CONSTRUCTION (top to bottom)

- One-piece peaked fiberglass roof
- Luaun backing
- Thick, tapered bead foam insulation
- Aluminum double I-beam superstructure filled with fiberglass insulation
- Vapor barrier
- Structure foam: thermal insulative barrier
- 1/2" bead foam insulation
- Foam padding for extra insulation
- Padded vinyl ceiling



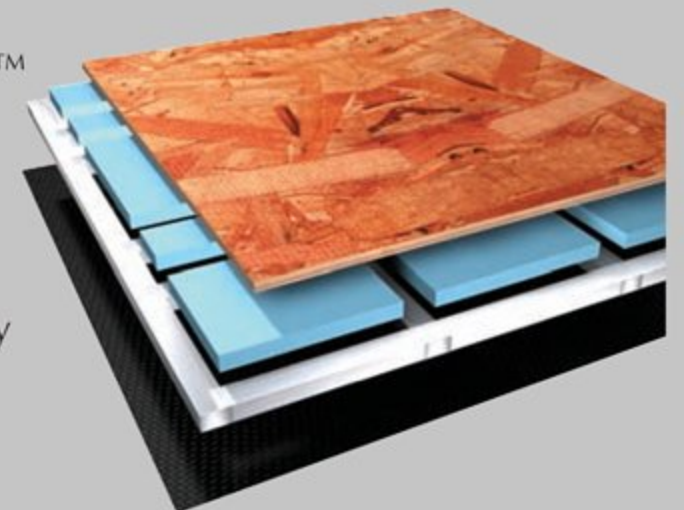
5-LAYER SIDEWALL CONSTRUCTION (left to right)

- Smooth gel coat fiberglass is standard; smooth .060 aluminum is standard on SVE models
- Interlocking C-Channel filled with 1-1/2" fiberglass insulation bonded in place so it doesn't sag or leave spaces uninsulated
- Vapor barrier
- Bead foam adds comfort, saves energy and provides a thermal insulative barrier
- Interior paneling



4-LAYER FLOOR CONSTRUCTION (top to bottom)

- Structurwood™
- Blue foam insulation
- 1-1/2" aluminum tube
- Three-ply poly underbelly



BODY CONSTRUCTION: FEATURES

- Alumaframe® Superstructure
- Steel Cage Cockpit Construction
- Smooth Gel Coat Fiberglass Exterior Walls
- Front Molded Fiberglass Caps
- Panaview™ 1-Piece Front Windshield
- Large Chrome Front Grille
- Rear Cap with Automotive Style Taillights
- 84" Interior Height
- One-Piece Interior Engine Cover
- Power Heated Remote Exterior Mirrors
- Metal Fuel Door with Lock
- 30" Deep Bedroom Slide-Out Houses (30PDD, 35SFD, 36DBD, 36PCT)
- One-Piece Polyethylene Pass-Through Storage Compartment
- Side-Hinged Baggage Doors
- Single Stage Full-Body Paint with Vinyl Graphics
- Rear Ladder
- Undercoating

OPTIONS

- Film Front Protective Mask

- Standard Run Savings Package: Film Front Protection Mask, Power Sunvisors, Hardwood Raised Panel Doors on Refrigerator, Single 15M BTU Air Conditioner with Heat Pump, Patio Awning (30PDD, 30SFS)
- Standard Run Savings Package: Film Front Protection Mask, Power Sunvisors, Hardwood Raised Panel Doors on Refrigerator, 50 Amp Energy Management System, Patio Awning (N/A: 30PDD, 30SFS)

FORD 20,500 LB CHASSIS/ENGINE/SUSPENSION (30PDD, 30SFS)

- 6.8L 3-Valve V-10 Gasoline Engine with Electronic Fuel Injection
- Engine Displacement: 6.8 Liters 415 Cu. In.
- Power: 362HP; Torque: 457 lbs./ft.
- TorqShift 5-Speed Automatic Overdrive Transmission with Tow/Haul Mode
- Transmission Oil Temperature Gauge
- Fuel Tank Capacity 75 Gallon
- 130 Amp Alternator
- Rear Axle Ratio 5.38:1
- Radial Tires 245/70R x 19.5F
- Stainless Steel Wheel Liners
- Leaf Spring Suspension
- Front and Rear Disc, 4-Wheel Anti-Lock Brakes
- Heavy-Duty Front Track Bar with Bilstein® Shock Absorbers
- Prewire for Supplemental Braking System
- 5,000 Lb. Hitch Receiver with Dual Connector 4-Pin or 7-Pin (Hidden Hitch)
- SmartStructure II

WORKHORSE 20,700 LB CHASSIS/ENGINE/SUSPENSION (30PDD, 30SFS)

- 8.1L V-8 Gasoline Engine with Electronic Fuel Injection
- Engine Displacement: 8.1 Liters 496 Cu. In.
- Power: 340HP; Torque: 455 lbs./ft.
- 6-Speed Automatic Transmission with Overdrive
- Fuel Tank Capacity 75 Gallon
- 145 Amp Alternator
- Rear Axle Ratio 5.13:1
- Radial Tires 245/70R x 19.5F
- Stainless Steel Wheel Liner
- Leaf Spring Suspension
- ABS Brake System
- Prewire for Supplemental Braking System
- 5,000 Lb. Hitch Receiver with Dual Connector 4-Pin or 7-Pin
- SmartStructure II

FORD 22,000 LB CHASSIS/ENGINE/SUSPENSION (N/A: 30PDD, 30SFS, 33SFS)

- 6.8L 3-Valve V-10 Gasoline Engine with Electronic Fuel Injection
- Engine Displacement: 6.8 Liters 415 Cu. In.
- Power: 362HP; Torque: 457 lbs./ft.
- TorqShift 5-Speed Automatic Overdrive Transmission with Tow/Haul Mode
- Transmission Oil Temperature Gauge
- Fuel Tank Capacity 75 Gallon
- 130 Amp Alternator
- Rear Axle Ratio 5.38:1
- Radial Tires 235/80R/22.5G
- Wheel/Rims Polished Aluminum Wheels
- Leaf Spring Suspension
- Front and Rear Disc, 4-Wheel Anti-Lock Brakes
- Heavy-Duty Front Track Bar with Bilstein® Shock Absorbers
- Fully Automatic Hydraulic Leveling System
- Prewire for Supplemental Braking System
- 5,000 Lb. Hitch Receiver with Dual Connector 4-Pin or 7-Pin
- SmartStructure II

WORKHORSE 22,000 LB CHASSIS/ENGINE/SUSPENSION (N/A: 30PDD, 30SFS)

- 8.1L V-8 Gasoline Engine with Electronic Fuel Injection (N/A: 30PDD, 30SFS)
- Engine Displacement: 8.1 Liters 496 Cu. In.
- Power: 340HP; Torque: 455 lbs./ft.
- 6-Speed Automatic Transmission with Overdrive
- Fuel Tank Capacity 75 Gallon
- 145 Amp Alternator
- Rear Axle Ratio 5.86:1
- Radial Tires 235/80R/22.5G
- Stainless Steel Wheel Liners
- Leaf Spring Suspension
- ABS Brake System
- Fully Automatic Hydraulic Leveling System
- Prewire for Supplemental Braking System
- 5,000 Lb. Hitch Receiver with Dual Connector 4-Pin or 7-Pin
- SmartStructure II

COCKPIT: FEATURES

- Fiberglass Automotive Dash with Oxford Burl Instrumentation Panel
- CD Player/Radio with Sirius-Ready Compatibility, Weather Band, and Six Speakers
- Multi-Positioned Sunvisors
- Rear Vision System Prep
- Leatherette Pilot and Co-Pilot Cockpit Recliner Seats
- Leatherette Pilot and Co-Pilot Cockpit Recliner Seats

- Carpeted Driver and Passenger Floor Mats

OPTIONS

- Sirius Radio Satellite System (Requires Subscription)
- GPS System High-Speed DVD Navigation System (Requires Rear Vision System Selection)

- Single Camera Rear Vision System with Audio and Adjustable Camera
- 3- Camera Rear Vision System with Audio and Adjustable Center Camera
- Power Sunvisors (Forced Option)
- Interior Solar Privacy Sunscreens
- CB Radio Prep
- Driver's Side Door with Electric Window

APPLIANCES AND ACCESSORIES: FEATURES

- Large Double-Door Refrigerator
- High-Output 3-Burner Cooktop without Oven
- Bi-Fold Range Cover
- Spacesaver Convection Microwave with Touch Control
- 26" LCD Stereo Color TV with Remote Control in Cockpit Overhead
- 20" Color TV with Remote Control in Bedroom
- Curbside: Exterior Hook-Ups for DSS Dish, Cable, 110V Outlet, with Hatch Door to Exterior

- Digital Satellite System Prep

OPTIONS

- Large Double-Door Refrigerator with Ice Maker
- Large Double-Door Refrigerator with Ice Maker 10 Cu. Ft.
- Large Four-Door Refrigerator with Ice Maker (N/A with Pantry) (N/A: 30PDD, 30SFS, 33SFS)
- High-Output Three-Burner Range with Oven

- Washer/Dryer Prep (36DBD, 36PCT)
- Combination Washer/Dryer (Requires Washer/Dryer Prep Option) (36DBD, 36PCT)
- Central Vacuum System
- Front Living Room Area DVD Player
- Bedroom DVD Player
- Exterior Entertainment Center, CD Player/Radio with Two Speakers

INTERIOR: FEATURES

- Raised Panel Cabinet Doors
- Black ABS Refrigerator Insert
- Heavy-Duty Ball Bearing Drawer Guides
- Wood Cabinet Drawer Boxes
- Solid Surface Kitchen Countertop with Solid Surface Edge Treatment, and Solid Surface Backsplash
- Kitchen Countertop Extension with Two Drawers below and 110 V Outlet under Extension (34SBD, 36DBD, 37PCT)
- Large Kitchen Countertop Pullout Extension with Drawers Below (36PCT)
- All Other Countertops Laminate
- Kitchen Pantry next to Refrigerator with Full-Height Wire Roll-Out Storage (N/A with Four-Door Refrigerator Option) (N/A: 30PDD, 30SFS)

- Carpeting with Pad in Living Area and Bedroom
- Wood Slide-Out Fascia with Fabric Inserts on Header and Legs
- Satin Nickel Cabinetry Hardware and Bath Accessories
- Hardwood Framed Pocket Doors with Flat Panel Insert (N/A: 35SFD)
- Blackout Day/Night Pleated Shades in Living Area and in Bedroom
- Soil Repellant on Fabric, Teflon® Fabric Protection

OPTIONS

- Decors: Essex, Escape, and Alpine
- Wood Choice: Newport Cherry, Champagne Select
- Hardwood Raised Panel Doors on Refrigerator IPO Black ABS Refrigerator Insert

FURNITURE: STANDARDS

- Queen Bed with Nightstands
- Arched Back Wood Booth Dinette, with Side-Sliding Dinette Tabletop (N/A: 30SFS, 33SFS, 35SFD)
- Freestanding Dinette with Two Freestanding Chairs and Two Folding Chairs (30SFS, 33SFS, 35SFD)
- Roadside: Fabric Easy Bed Sofa
- Curbside: Fabric Easy Bed Sofa (35SFD)
- Leatherette Swivel Rocker Barrel Chair (N/A: 30PDD, 30SFS, 35SFD)
- Fabric Swivel Rocker Barrel Chair with Desk and Chair in Bedroom (37PCT)

OPTIONS

- Roadside: Fabric Hide-A-Bed Sofa
- Roadside: Fabric Hide-A-Bed Sofa with Air Mattress
- Roadside: Leatherette Hide-A-Bed Sofa with Air Mattress
- Roadside: Leatherette Ensemble Booth Dinette; Includes Leatherette Hide-A-Bed Sofa Selection with Air Mattress (34SBD, 36DBD, 36PCT, 37PCT)
- Curbside: Leatherette Easy Bed Sofa IPO Fabric Easy Bed Sofa (35SFD)
- Curbside: One Leatherette Euro-Recliner Chair with Ottoman, with Wall-Mounted Table IPO Sofa (35SFD)
- Curbside: Leatherette Swivel Recliner IPO Fabric Swivel Rocker Barrel Chair (33SFS, 34SBD, 36DBD, 37PCT)
- Curbside: Leatherette Euro-Recliner Chair with Ottoman IPO Fabric Swivel Rocker Barrel Chair (33SFS, 34SBD, 36DBD, 37PCT)
- Two Fabric Swivel Rocker Barrel Chairs with Center Lift-Up Table IPO Desk and Desk Chair Bedroom (37PCT)
- Hallway Bunks with Bottom Drawers, 20" LCD TV, AV Game Plate Built into Outside of Bath Wall, and Bunk Ladder (34SBD)
- Freestanding Dinette with Two Freestanding Chairs and Two Folding Chairs (34SBD, 36DBD, 36PCT, 37PCT)

ELECTRICAL SYSTEMS AND LIGHTS: FEATURES

- 30 Amp 120V Distribution Panel and Cord (30PDD, 30SFS)
- 50 Amp 120V Distribution Panel and Cord (N/A: 30PDD, 30SFS)
- 60 Amp Electronic 12V Power Converter
- Onan® 4.0 kW Gas Generator (30PDD, 30SFS)
- Onan® 5.5 kW Gas Generator (N/A: 30PDD, 30SFS)
- Two 6V House Batteries
- Battery Disconnect Switches
- Exterior Power Entry Step, with Light
- Water Pump Switch in Service Bay Area and Convenience Center
- Lights in Outside Storage Compartments
- Underhood Utility Light
- Two Recessed Ceiling Map Lights above Cockpit Seats
- Hallway Convenience Center

- Three Recessed Ceiling Lights above Countertop Work Area Kitchen
- Decorative Chrome/Satin Lighting Throughout

OPTIONS

- 50 Amp Energy Management System

PLUMBING AND LP SYSTEMS: FEATURES

- Hi-Rise Kitchen Faucet with Soap Dispenser
- Central Water Filtration System
- Satin Nickel Bath Lavatory Faucet
- Demand Water System and Water Pump
- 6-Gallon LP Gas/Electric Water Heater with Electronic Ignition, DSI
- Winterization Valving System
- Water Heater Bypass Valve
- China Toilet with Sprayer
- No-Fuss Flush Holding Tank Rinsing System
- Insulated Systems Compartment with Easy Access to Hook-Up
- Shower inside Wet Bay with Hot/Cold Water; Shower Head with Shut-Off
- Soap Dispenser inside Utility Bay
- Gravity and Pressurized Water Fill
- Contained Storage Area for Sewer Hose
- Shower Faucet, with Shower Hose, and Head with Shut-Off

OPTIONS

- RV Sani-Con 2 System, Holding Tank Flush System, with Hanging Bracket for Hose
- 10-Gallon LP Gas/Electric Water Heater with Electronic Ignition, DSI IPO
- 6-Gallon LP Gas/Electric Water Heater
- Bathtub Option IPO Shower, ABS Surround with New Shower Doors



SALES • TECH • ROADSIDE

**WE'RE HERE. ANYTIME, EVERY TIME.**

- Reach us anytime — literally — via our live customer support line.
- Drive in to one of our 350 Service Centers.
- Enjoy the first year free when you enroll in our Owner Advantage Roadside Assistance Program.
- See where it all begins with a tour of one of our facilities in Indiana or Oregon. Call 1-800-650-7337 or 1-800-634-0855 to find out more.

HEATING, VENTS AND AIR CONDITIONING: FEATURES

- Dual 13.5M BTU Air Conditioner, with Ducted Air and Wall Thermostats (N/A: 30PDD, 30SFS)
- Single 13.5M BTU Air Conditioner, with Ducted Air and Wall Thermostats (30PDD, 30SFS)
- 31M BTU Electronic Ignition Furnace (30PDD, 30SFS)
- 35M BTU Electronic Ignition Furnace (N/A: 30PDD, 30SFS)
- 12V Roof Vent in Kitchen and Bath

OPTIONS

- Dual 15M BTU Air Conditioner with Heat Pumps IPO 13.5 Brisk Air (N/A: 30PDD, 30SFS)
- Single 15M BTU Air Conditioner with Heat Pump IPO 13.5 Brisk Air (30PDD, 30SFS)
- Kitchen Powered Attic Fan with Wall Control of Automatic Dome and Fan Power
- Bath Powered Attic Fan with Wall Control of Automatic Dome and Fan Power
- 12V Heater in Wet Bay, Heat Pad on Fresh Tank

WINDOWS, DOORS AND AWNINGS: FEATURES

- Radius Flush-Mounted Dual Pane Windows Safety Glass Dark Tinted
- Rear Wall Bedroom Window (N/A: 30SFS, 33SFS, 36DBD)
- Bathroom Window (N/A: 30PDD, 30SFS, 33SFS, 34SBD)
- Radius Entrance Door with Clear Glass, Roller Shade, Screen Door and Anti-Skid Steps
- Topper Slide-Out Awnings Living Area and Bedroom
- Protecta Glaze Tinted Plexiglas® Skylight in Bathroom
- Awning Rail

OPTIONS

- Patio Awning
- Eclipse Poly-Weave Automatic Patio Awning
- Poly-Weave Window Awnings Living Area Slide-Out House Windows
- Bedroom Skylight with Decorative Wood Frame and Shade (37PCT)
- Poly-Weave Side Window Awning Bedroom (N/A: 34SBD, 35SFD, 37PCT)

SAFETY STANDARD FEATURES

- Fire Extinguisher
- Deadbolt Lock on Entrance Door
- 120V GFI Protected Circuit, Kitchen, Bath and Exterior
- LP Gas Detector
- Smoke Detector
- Carbon Monoxide Detector
- Pilot and Co-Pilot Three-Point Seatbelts
- Third Brake Safety Light
- Egress Window(s)

Due to continuous product improvement, please see the website for the latest in standards and options, specifications, and technical data. Go to www.holidayrambler.com.

H O L I D A Y R A M B L E R . C O M

Log on to our website anytime, night or day. It's your link to everything Holiday Rambler, including product news and updates, club events, dealer and service center info and much more. Take it for a test drive today.



Weights (Ford 20,500 Lb. Chassis)*	30PDD	30SFS	33SFS	34SBD	35SFD	36DBD	36PCT	37PCT
Gross Vehicle Weight Rating	20,500	20,500	N/A	N/A	N/A	N/A	N/A	N/A
Gross Combined Weight Rating	25,500	25,500	N/A	N/A	N/A	N/A	N/A	N/A
Front Gross Axle Weight Rating	7,000	7,000	N/A	N/A	N/A	N/A	N/A	N/A
Rear Gross Axle Weight Rating	13,500	13,500	N/A	N/A	N/A	N/A	N/A	N/A

Weights (Workhorse 20,700 Lb. Chassis)*								
Gross Vehicle Weight Rating	20,700	20,700	N/A	N/A	N/A	N/A	N/A	N/A
Gross Combined Weight Rating	25,700	25,700	N/A	N/A	N/A	N/A	N/A	N/A
Front Gross Axle Weight Rating	7,500	7,500	N/A	N/A	N/A	N/A	N/A	N/A
Rear Gross Axle Weight Rating	13,500	13,500	N/A	N/A	N/A	N/A	N/A	N/A

Weights (Ford 22,000 Lb. Chassis)*								
Gross Vehicle Weight Rating	N/A	N/A	N/A	22,000	22,000	22,000	22,000	22,000
Gross Combined Weight Rating	N/A	N/A	N/A	26,000	26,000	26,000	26,000	26,000
Front Gross Axle Weight Rating	N/A	N/A	N/A	7,500	7,500	7,500	7,500	7,500
Rear Gross Axle Weight Rating	N/A	N/A	N/A	14,500	14,500	14,500	14,500	14,500

Weights (Workhorse 22,000 Lb. Chassis)*								
Gross Vehicle Weight Rating	N/A	N/A	22,000	22,000	22,000	22,000	22,000	22,000
Gross Combined Weight Rating	N/A	N/A	26,000	26,000	26,000	26,000	26,000	26,000
Front Gross Axle Weight Rating	N/A	N/A	8,000	8,000	8,000	8,000	8,000	8,000
Rear Gross Axle Weight Rating	N/A	N/A	14,500	14,500	14,500	14,500	14,500	14,500

Measurements								
Wheelbase	190"	190"	228"	228"	228"	242"	242"	242"
Overall Length	31' 0"	31' 0"	34' 3"	35' 2"	TBD	36' 9"	36' 9"	37' 4"
Overall Height, Including A/C	12' 6"	12' 6"	12' 9"	12' 9"	12' 9"	12' 9"	12' 9"	12' 9"
Interior Height	84"	84"	84"	84"	84"	84"	84"	84"
Interior Width	94.5"	94.5"	94.5"	94.5"	94.5"	94.5"	94.5"	94.5"
Exterior Width	100.5"	100.5"	100.5"	100.5"	100.5"	100.5"	100.5"	100.5"

Tank Capacities**								
Water Heater	6	6	6	6	6	6	6	6
Gray Tank	43	43	54	42	45	42/39	40	45
Black Tank	45	45	42	40	54	42/39	40	54
Fresh Tank	60	60	60	60	60	60	60	60
LP Tank***	20	20	20	20	20	20	24	20

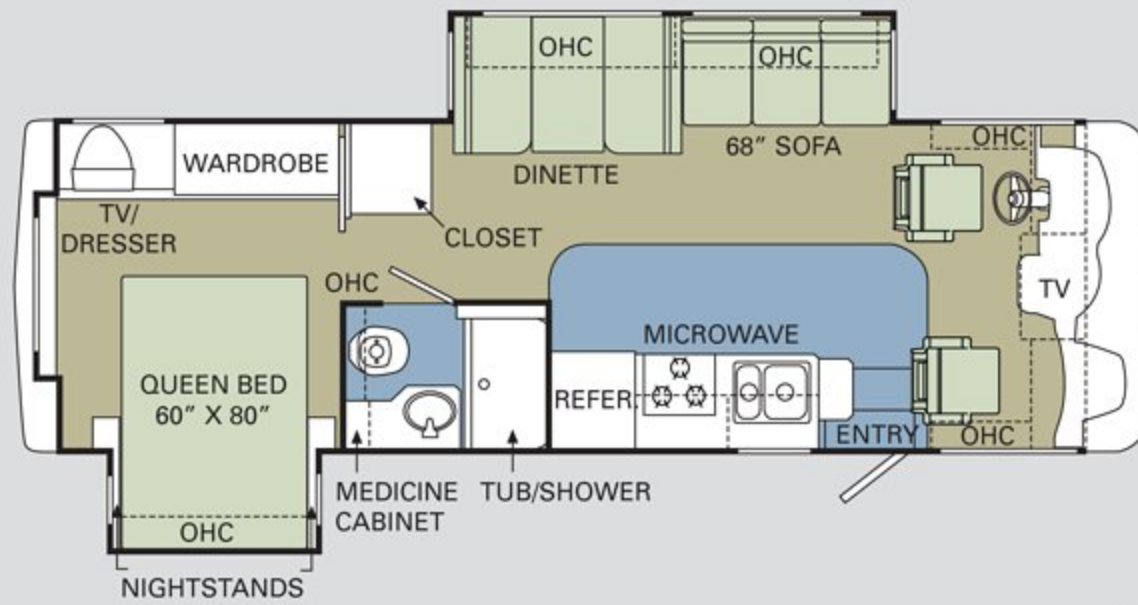
* Towing capacity is limited by GCWR; your vehicle's towing capacity is the difference between the GCWR and the actual vehicle weight, including all water, fuel, passengers and cargo. Your towed vehicle should be equipped with auxiliary brakes if the weight of the towed vehicle exceeds 1,000 lbs. Consult your owner's manual for further towing information.

** All tank capacities are estimated based upon calculations provided by the tank manufacturers and represent approximate capacities. The actual "usable capacity" may be greater or less than the estimated capacities based upon fabrication and installation of the tanks.

*** Actual filled LP capacity is 80% of listing due to safety shut-off required on tank.

The actual overall length of the recreational vehicle may differ from that indicated in the brochure due to variances in the manufacturing process and/or installed components. The actual length may be greater or less than that indicated. Due to the large variety of options and floorplan arrangements available to our customers, actual weights for each unit can differ significantly. Holiday Rambler provides a weight sticker on each unit we produce which includes that unit's tank capacities and approximate weight. Consult your local Holiday Rambler dealer for unit availability and further information. The information printed in this brochure reflects product design, fabrication, and component parts at the date of printing. The manufacturer reserves the right, at any time, to make changes in product design or material or component specifications as its sole option, without notice. This includes the substitution of components of a different brand or trade name which will result in comparable performance. All information printed in this brochure is subject to change after the date of printing. Some features shown or mentioned in this brochure are optional and may only be available in selected floorplans. Photographs may show props or decorations that are not standard equipment on Holiday Rambler models. Holiday Rambler, the Holiday Rambler logo and its design, are registered trademarks. All other products and company names are trademarks and/or registered trademarks of their respective holders. While the color of the motorhome's exterior and the interior fabrics depicted in this sales brochure are fair and reasonable depictions, the colors depicted may not be an exact match of the actual colors because of the variances in photo-processing and variances caused by inserting the photographs within the sales brochure. Due to product improvements, changes during the model year and/or transcription errors that may occur, information represented within this brochure may not be accurate at the time of your purchase. If certain information is significant to your purchasing decision, please confirm the information with your dealer prior to submitting your order. Component part and appliance manufacturers issue limited warranties covering those portions of the recreational vehicle not covered by the Limited Warranties issued by Monaco Coach Corporation. To learn which specific component parts and appliances are excluded from the Limited Warranties issued by Monaco Coach Corporation, please contact your selling dealership or Monaco Coach Corporation directly, or review the warranty packet inside the recreational vehicle.

30PDD

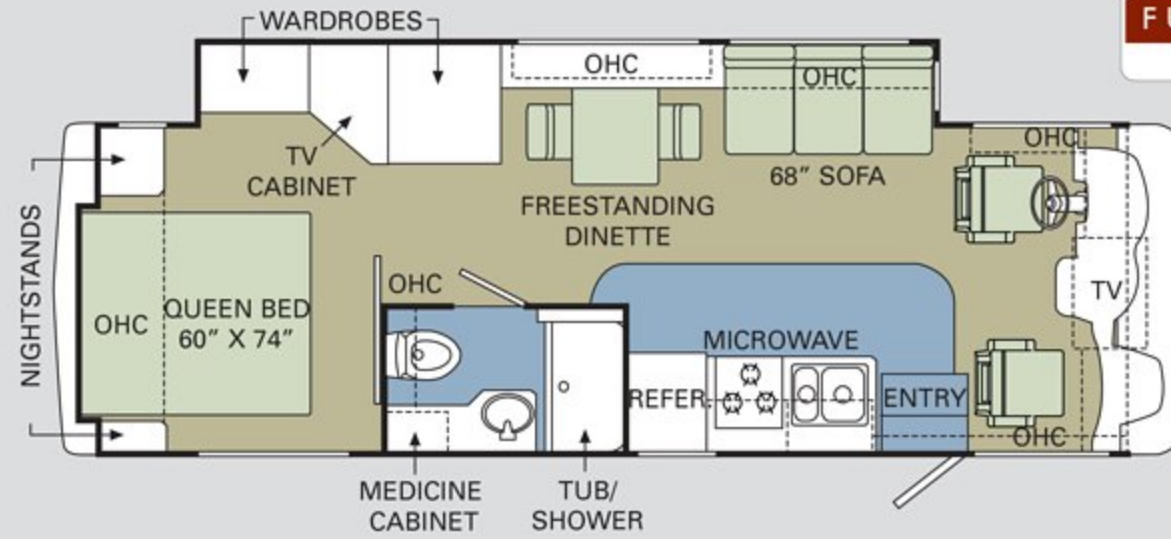


EXCLUSIVE HYDRAULIC

FULL-WALL SLIDE

▼ PANAsuite

30SFS

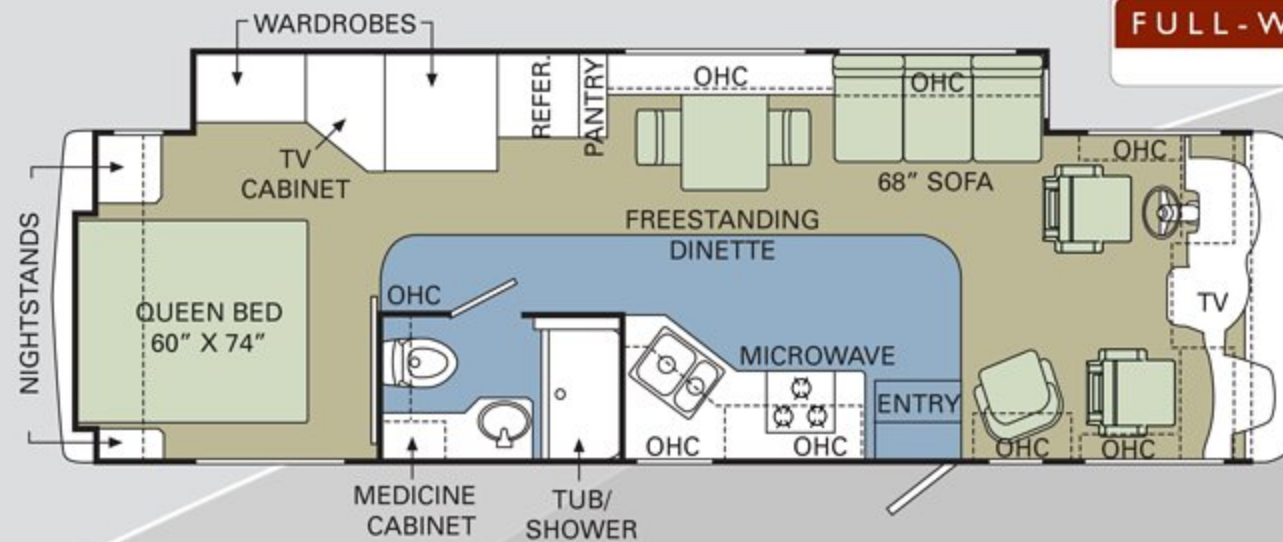


EXCLUSIVE HYDRAULIC

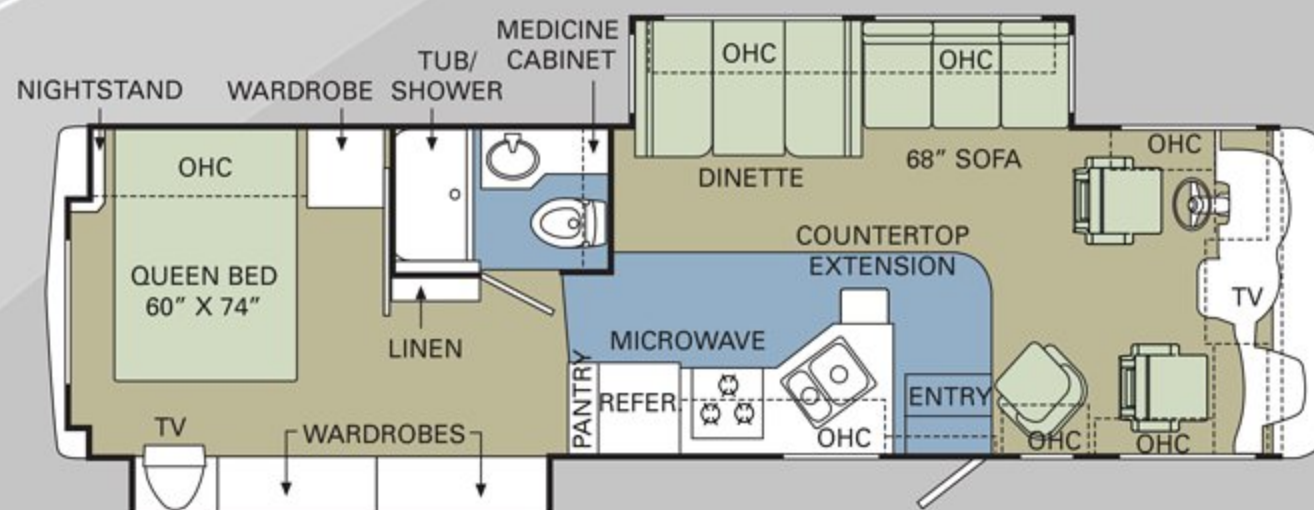
FULL-WALL SLIDE

▼ PANAsuite

33SFS



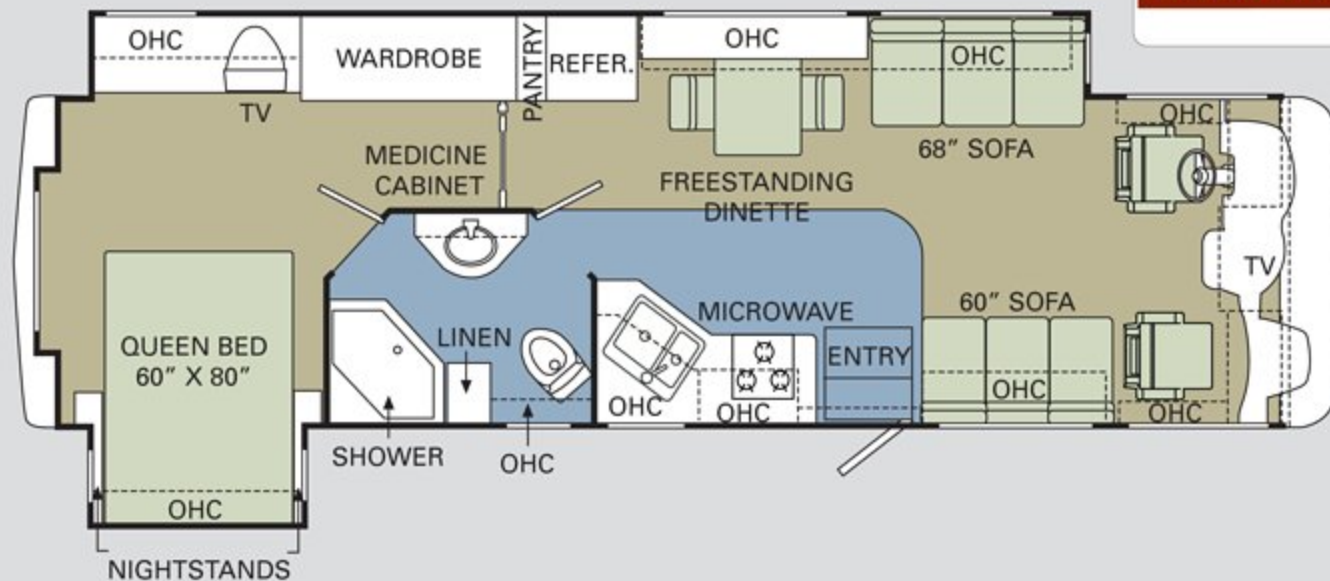
34SBD



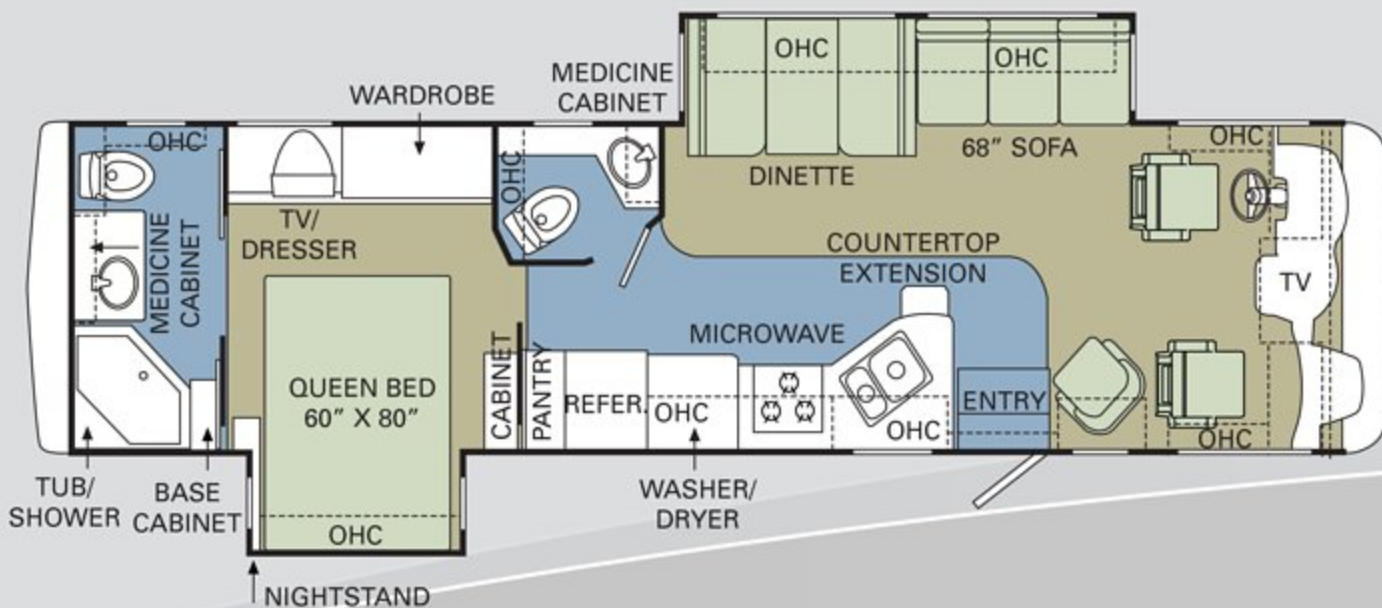
EXCLUSIVE HYDRAULIC

FULL-WALL SLIDE

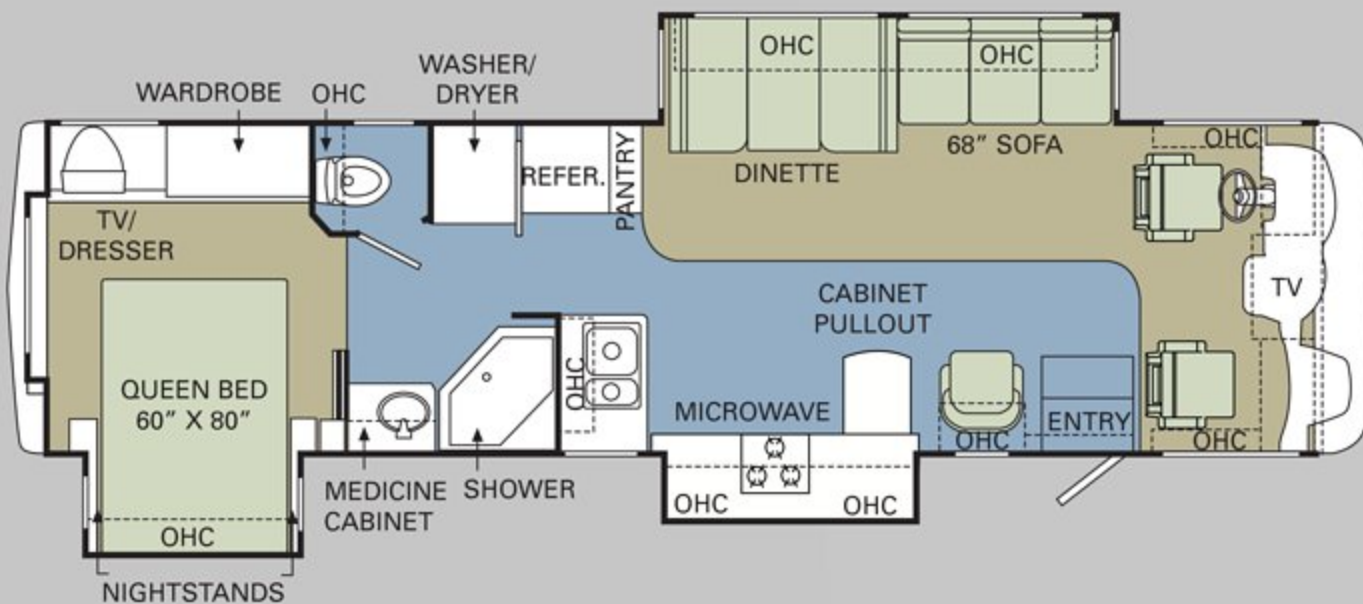
✓ PANASUITE



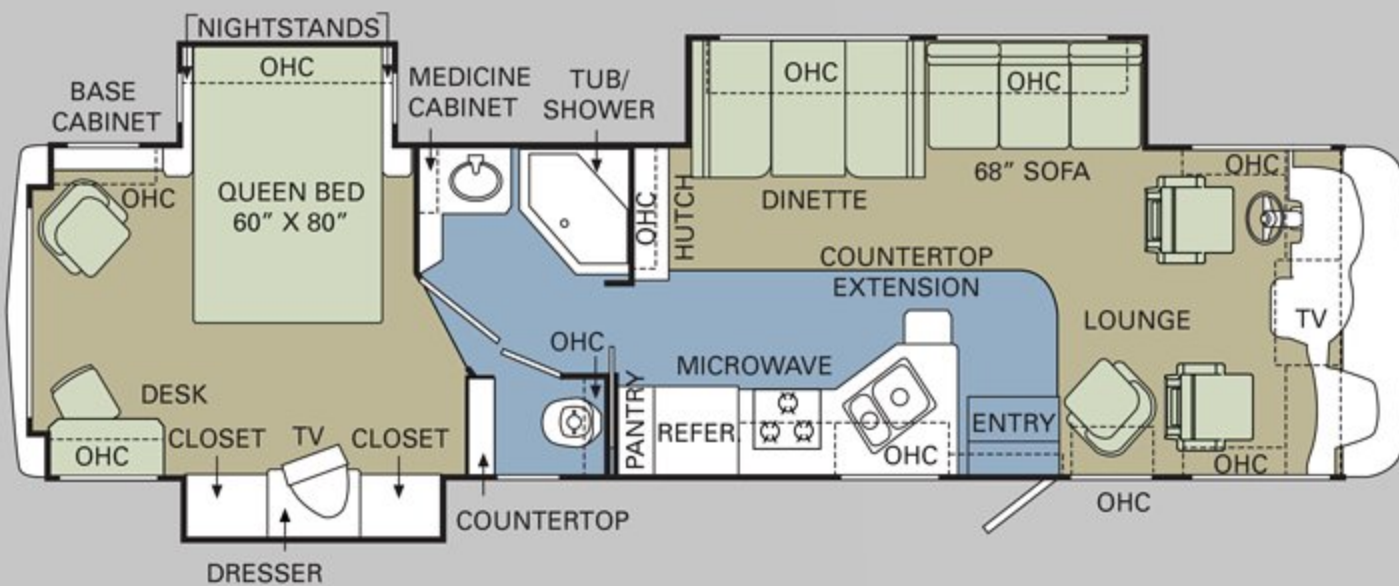
35SFD



36DBD



36PCT



37PCT



ADMIRAL®
2008

BEING DIFFERENT MAKES ALL THE DIFFERENCE.

At Monaco Coach Corporation, we always strive to be the best. And that means thinking outside the box. Giving you more of what you want in an RV. Like our exclusive Roadmaster chassis. PanaSuite™ full-wall slides. And programs like Monaco Financial Services and 24/7 roadside assistance. No other manufacturer can match Monaco's offerings. No one even comes close. Why not discover the difference for yourself? Visit www.monacodifferent.com.

**"No other manufacturer can match Monaco's offerings.
No one even comes close."**



WARRANTIES

12 MONTH/24,000 MILE basic limited warranty

5 YEAR/50,000 MILE limited warranty on aluminum or steel frame structure of sidewall, roof, front and rear cap

Applies to certain models. See owner's manual for complete details.



HOLIDAY RAMBLER®

This is Living.



MONACO COACH CORPORATION

606 Nelson's Parkway Wakarusa, IN 46573
www.holidayrambler.com | 800-245-4778



Monaco is traded on the New York Stock Exchange under the listing MNC.
© 2007, Monaco Coach Corporation 08/07 NPN:BROHADM Litho in USA.