

# Montego Bay Bay



MONTEGO BAY FIFTH WHEELS | BY: KZRV

BY: 

*it's all about luxury*

# Montego Bay Bay



MONTEGO BAY FIFTH WHEELS | BY: KZRV



*it's all about luxury*



*Living Room*

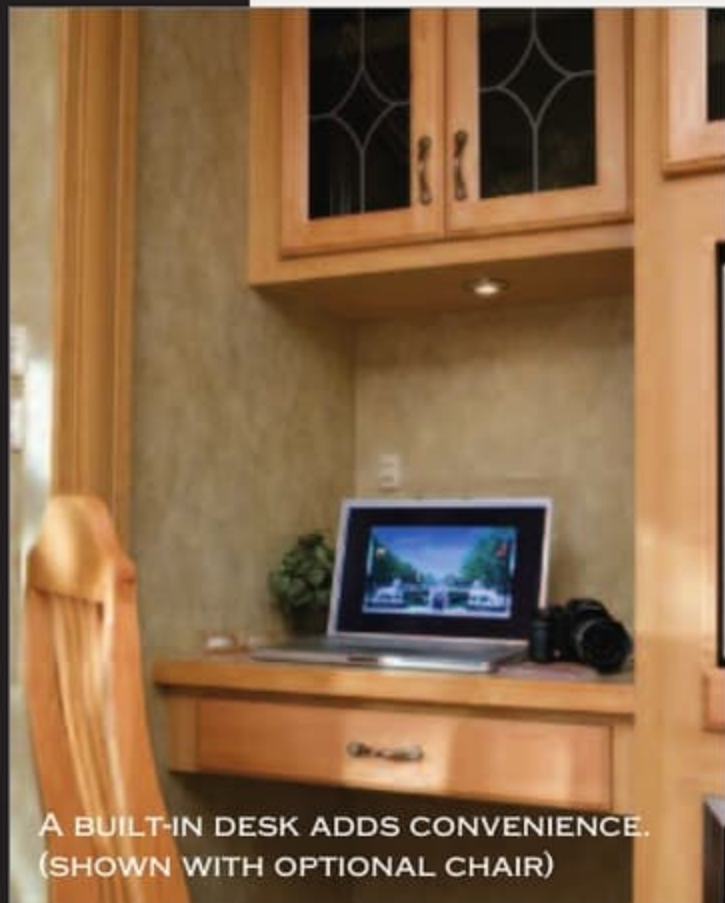




*Montego Bay™ elevates leisure living to its highest level with thoughtful, innovative designs and features. Abounding in opulent comforts, these elegant fifth wheels bring a whole new meaning to the RV lifestyle. Quality residential furnishings throughout create a living environment that's just like a fine home.*



▲ 36 REB-3 FLOOR PLAN SHOWN WITH CASABLANCA DECOR AND STANDARD MAPLE CABINETS

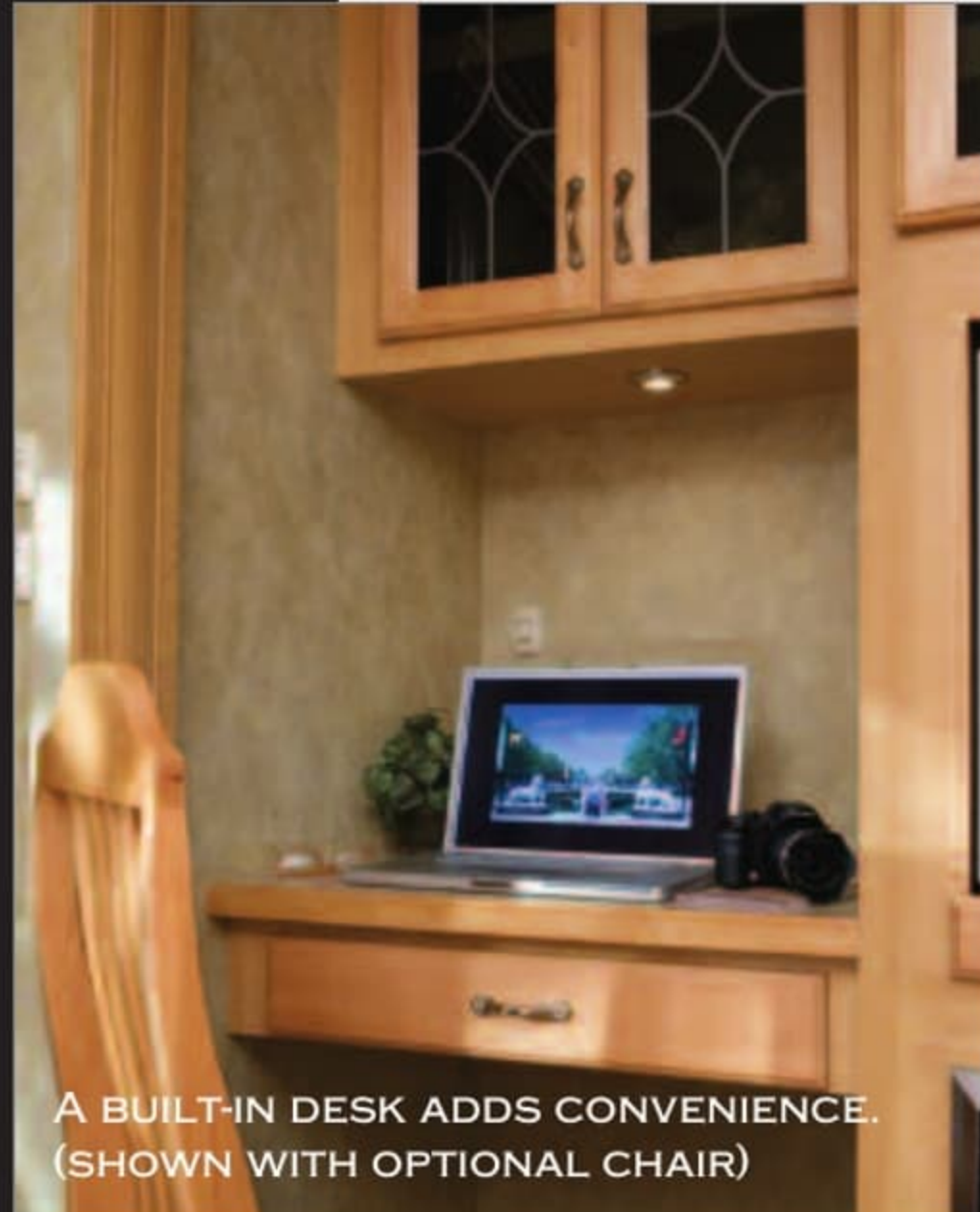


A BUILT-IN DESK ADDS CONVENIENCE. (SHOWN WITH OPTIONAL CHAIR)

*The art of fine living...  
...nurtured in beauty and comfort*



*Montego Bay™ elevates leisure living to its highest level with thoughtful, innovative designs and features. Abounding in opulent comforts, these elegant fifth wheels bring a whole new meaning to the RV lifestyle. Quality residential furnishings throughout create a living environment that's just like a fine home.*



**A BUILT-IN DESK ADDS CONVENIENCE.  
(SHOWN WITH OPTIONAL CHAIR)**



**▲ 36 REB-3 FLOOR PLAN SHOWN WITH CASABLANCA DECOR AND STANDARD MAPLE CABINETRY**

*The art of fine living...  
...nurtured in beauty and comfort*



THE MONTEGO BAY™ KITCHEN IS DESIGNED TO DRAW FAMILY AND FRIENDS TOGETHER JUST LIKE YOUR KITCHEN AT HOME. IT'S EQUIPPED WITH EVERYTHING YOU NEED FOR CONVENIENCE, EFFICIENCY, AND A WARM, COZY ATMOSPHERE. GENUINE CORIAN™ COUNTERTOPS ARE A STANDARD FEATURE.



CABINETS FEATURE HIDDEN RESIDENTIAL HINGES. 36 IKB-3 FLOOR PLAN SHOWN WITH OPTIONAL CHERRY CABINETRY



THE MONTEGO BAY™ KITCHEN IS DESIGNED TO DRAW FAMILY AND FRIENDS TOGETHER JUST LIKE YOUR KITCHEN AT HOME. IT'S EQUIPPED WITH EVERYTHING YOU NEED FOR CONVENIENCE, EFFICIENCY, AND A WARM, COZY ATMOSPHERE. GENUINE CORIAN™ COUNTERTOPS ARE A STANDARD FEATURE.



CABINETS FEATURE HIDDEN RESIDENTIAL HINGES. 36 IKB-3 FLOOR PLAN SHOWN WITH OPTIONAL CHERRY CABINETRY





▲ FULL EXTENSION DRAWER GUIDES WITH BALL BEARINGS ENABLE DRAWERS TO GLIDE OUT EASILY FOR FULL ACCESS STORAGE.



▲ A 30-INCH, RESIDENTIAL-STYLE MICROWAVE IS MOUNTED ABOVE THE STOVE FOR ADDED KITCHEN CONVENIENCE AND EFFICIENCY.



▲ 36 REB-3 FLOOR PLAN SHOWN WITH STANDARD MAPLE CABINETY AND OPTIONAL 12 CUBIC FOOT REFRIGERATOR.



▲ FULL EXTENSION DRAWER GUIDES WITH BALL BEARINGS ENABLE DRAWERS TO GLIDE OUT EASILY FOR FULL ACCESS STORAGE.



▲ A 30-INCH, RESIDENTIAL-STYLE MICROWAVE IS MOUNTED ABOVE THE STOVE FOR ADDED KITCHEN CONVENIENCE AND EFFICIENCY.



▲ 36 REB-3 FLOOR PLAN SHOWN WITH STANDARD MAPLE CABINETRY AND OPTIONAL 12 CUBIC FOOT REFRIGERATOR.

# Montego Bay

## Décor

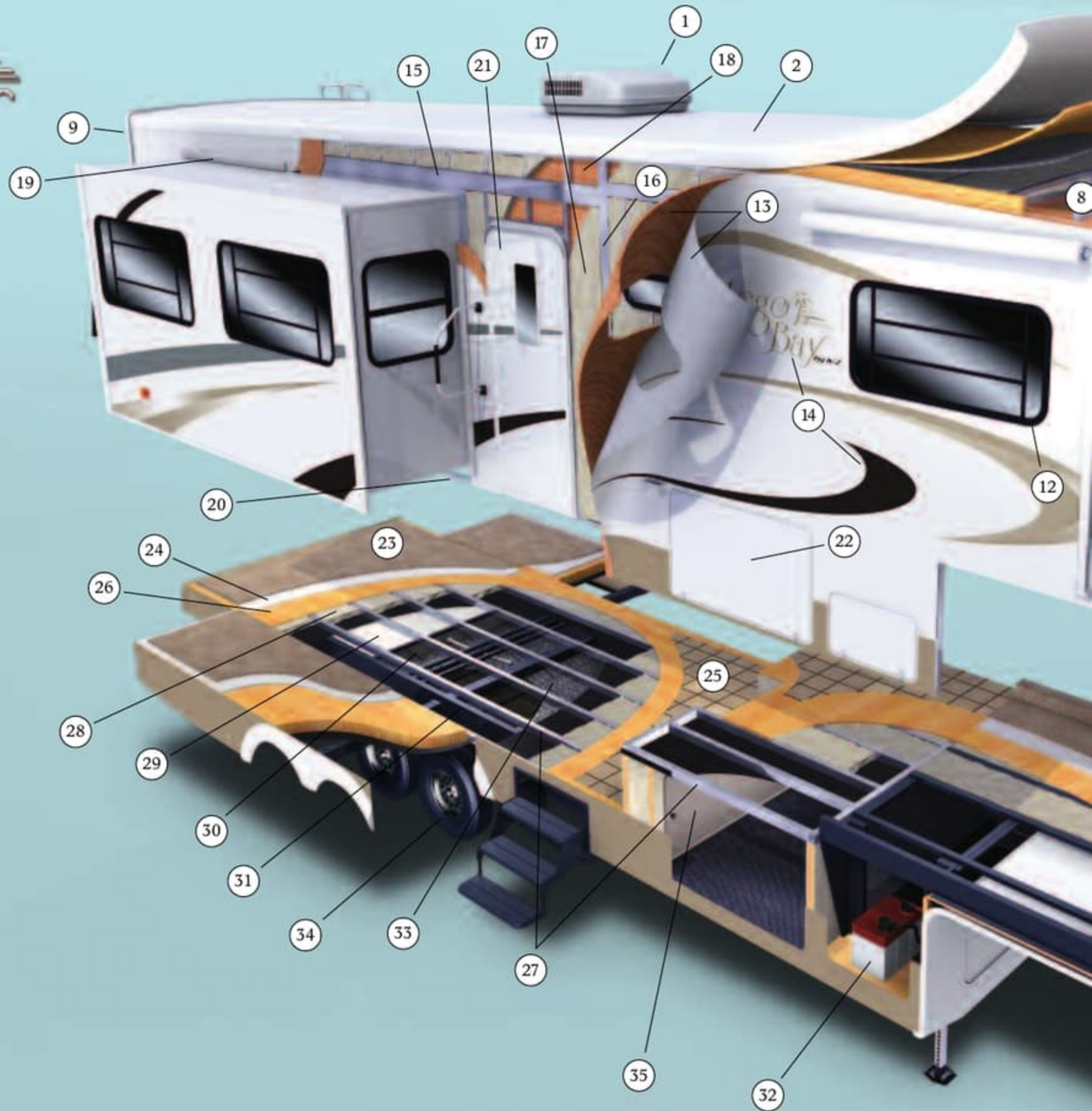
### ROYALE



### CASABLANCA



### LODEN



# Montego Bay

## Décor

### ROYALE



### CASABLANCA



### LODEN



## Cut-A-Way Highlight Features



1. 15K A/C
2. One piece seamless Royal Tuff-Ply roof
3. 1/2" plywood roof decking
4. R-7 Flex foil insulation
5. R-14 fiberglass batten insulation (roof total R-21)
6. 5-3/4" aluminum truss rafters - 16" O.C.
7. Decorative luan ceiling panel
8. Insulated ductwork
9. One piece gel coat fiberglass cap front and rear
10. Exterior security lights
11. Awning
12. Tinted safety glass windows
13. Gel coat fiberglass exterior with integrated luan backing
14. Premium exterior graphics package with raised Montego Bay logo
15. Heavy-duty aluminum headers
16. 2" x 2" aluminum double welded wall studs - 16" O.C.
17. R-7 fiberglass batten wall insulation
18. Decorative luan interior wall board
19. Triple seal flush mount slide-out
20. Rack and pinion electric slide with manual override and 3" x 3" box tube slide-out ram
21. 30" entry door
22. Large capacity pass-through storage with gas assist easy lift doors
23. Residential carpet
24. Residential style carpet pad
25. Armstrong linoleum
26. 5/8" tongue and groove plywood floor decking
27. 2" x 3" aluminum double welded floor joists - 16" O.C.
28. R-14 fiberglass batten insulation (floor total R-21)
29. R-7 Flex foil insulation
30. Darco moisture barrier
31. Strong welded frame structure. 18" total height (10" "I" beam and 8" "box" beam)
32. Easy access exterior battery compartment
33. Fully enclosed underside
34. Heavy-duty 16" 8 lug wheels, 7000# axles with easy lube hubs, heavy-duty shock absorbers
35. Easy access to the furnace, converter, water pump, and other mechanical items

## Cut-A-Way Highlight Features



1. 15K A/C
2. One piece seamless Royal Tuff-Ply roof
3. 1/2" plywood roof decking
4. R-7 Flex foil insulation
5. R-14 fiberglass batten insulation (roof total R-21)
6. 5-3/4" aluminum truss rafters - 16" O.C.
7. Decorative luan ceiling panel
8. Insulated ductwork
9. One piece gel coat fiberglass cap front and rear
10. Exterior security lights
11. Awning
12. Tinted safety glass windows
13. Gel coat fiberglass exterior with integrated luan backing
14. Premium exterior graphics package with raised Montego Bay logo
15. Heavy-duty aluminum headers
16. 2" x 2" aluminum double welded wall studs - 16" O.C.
17. R-7 fiberglass batten wall insulation
18. Decorative luan interior wall board
19. Triple seal flush mount slide-out
20. Rack and pinion electric slide with manual override and 3" x 3" box tube slide-out ram
21. 30" entry door
22. Large capacity pass-through storage with gas assist easy lift doors
23. Residential carpet
24. Residential style carpet pad
25. Armstrong linoleum
26. 5/8" tongue and groove plywood floor decking
27. 2" x 3" aluminum double welded floor joists - 16" O.C.
28. R-14 fiberglass batten insulation (floor total R-21)
29. R-7 Flex foil insulation
30. Darco moisture barrier
31. Strong welded frame structure. 18" total height (10" "I" beam and 8" "box" beam)
32. Easy access exterior battery compartment
33. Fully enclosed underside
34. Heavy-duty 16" 8 lug wheels, 7000# axles with easy lube hubs, heavy-duty shock absorbers
35. Easy access to the furnace, converter, water pump, and other mechanical items



FOR THE TRUE TEST OF COMFORT, LOOK TO THE BEDROOM AND BATH AND YOU'LL SEE MONTEGO BAY™ EXCELS WITH HIGHEST HONORS. THE DELUXE BEDROOM PACKAGE INCLUDES A PLUSH PILLOW TOP MATTRESS DRESSED WITH A DESIGNER BEDSPREAD, PILLOW SHAMS, AND HEADBOARD. CASABLANCA DECOR WITH STANDARD MAPLE CABINETRY SHOWN.



FOR THE TRUE TEST OF COMFORT, LOOK TO THE BEDROOM AND BATH AND YOU'LL SEE MONTEGO BAY™ EXCELS WITH HIGHEST HONORS. THE DELUXE BEDROOM PACKAGE INCLUDES A PLUSH PILLOW TOP MATTRESS DRESSED WITH A DESIGNER BEDSPREAD, PILLOW SHAMS, AND HEADBOARD. CASABLANCA DECOR WITH STANDARD MAPLE CABINETRY SHOWN.





BEDROOM SHOWN WITH LODEN DECOR, OPTIONAL CHERRY CABINETRY, AND 19" LCD TV.



THE BATH INCLUDES A NEO-ANGLE FIBERGLASS SHOWER WITH A TINTED OVERHEAD SKYLIGHT AND CORIAN™ COUNTERTOP.

## EXTERIOR FEATURES



A



B



C

- A. THE HEAVY-DUTY MAIN FRAME, 8" BOX BEAM, AND 10" I BEAM CREATE AN 18" FOUNDATION.
- B. LARGE EXTERIOR STORAGE COMPARTMENT HOLDS LOTS OF EXTRA GEAR.
- C. A SLIDING DOOR PROVIDES HANDY ACCESS TO THE FURNACE, CENTRAL VACUUM, AND OTHER MECHANICAL ITEMS.



BEDROOM SHOWN WITH LODEN DECOR, OPTIONAL CHERRY CABINETRY, AND 19" LCD TV.

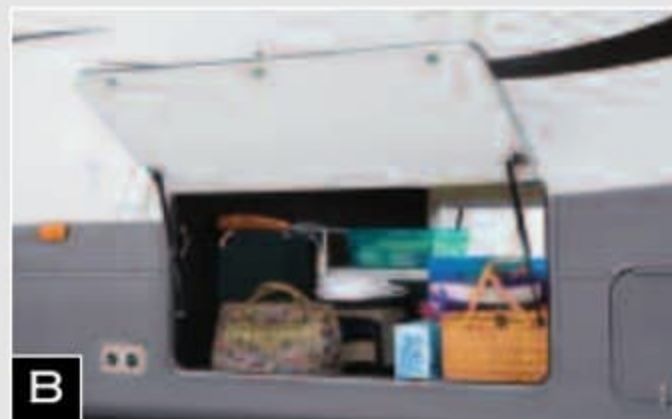


THE BATH INCLUDES A NEO-ANGLE FIBERGLASS SHOWER WITH A TINTED OVERHEAD SKYLIGHT AND CORIAN™ COUNTERTOP.

## EXTERIOR FEATURES



**A**



**B**



**C**

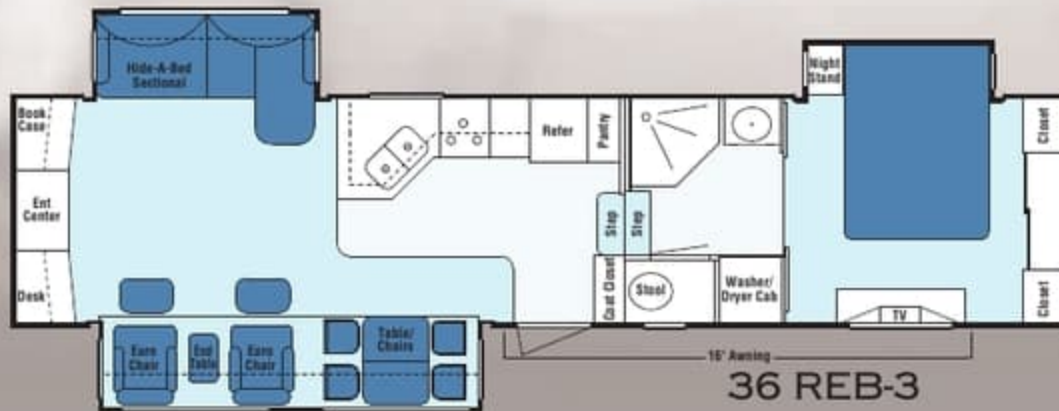
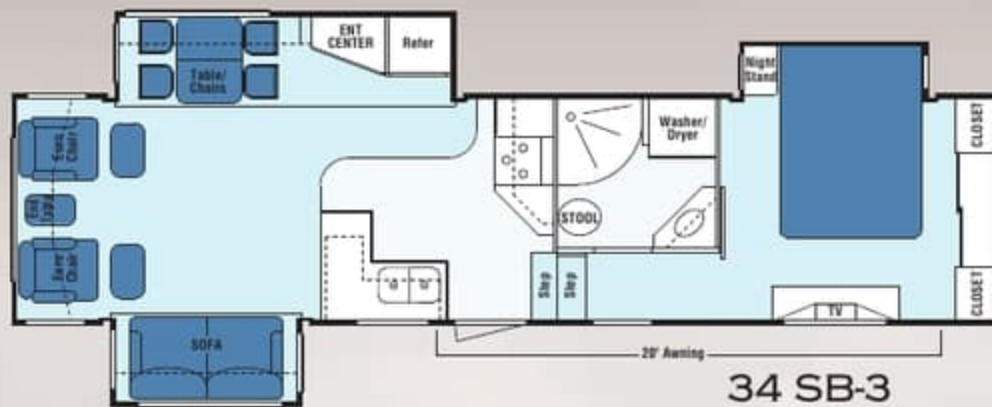
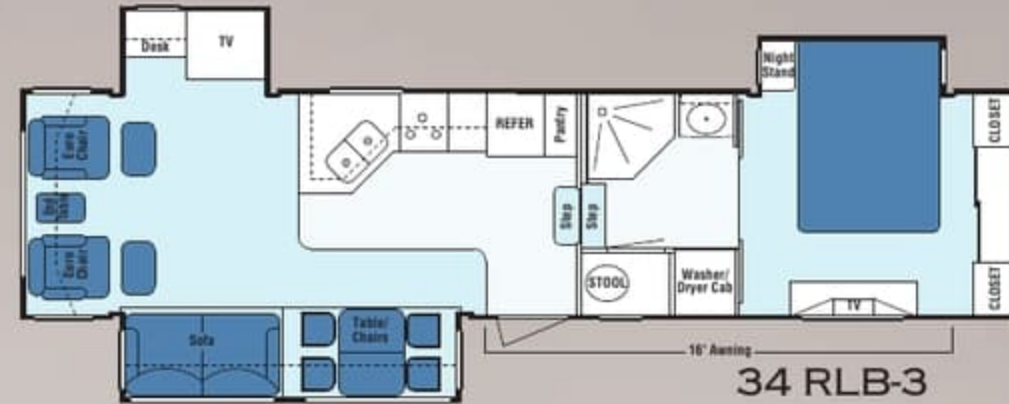
A. THE HEAVY-DUTY MAIN FRAME, 8" BOX BEAM, AND 10" I BEAM CREATE AN 18" FOUNDATION.

B. LARGE EXTERIOR STORAGE COMPARTMENT HOLDS LOTS OF EXTRA GEAR.

C. A SLIDING DOOR PROVIDES HANDY ACCESS TO THE FURNACE, CENTRAL VACUUM, AND OTHER MECHANICAL ITEMS.

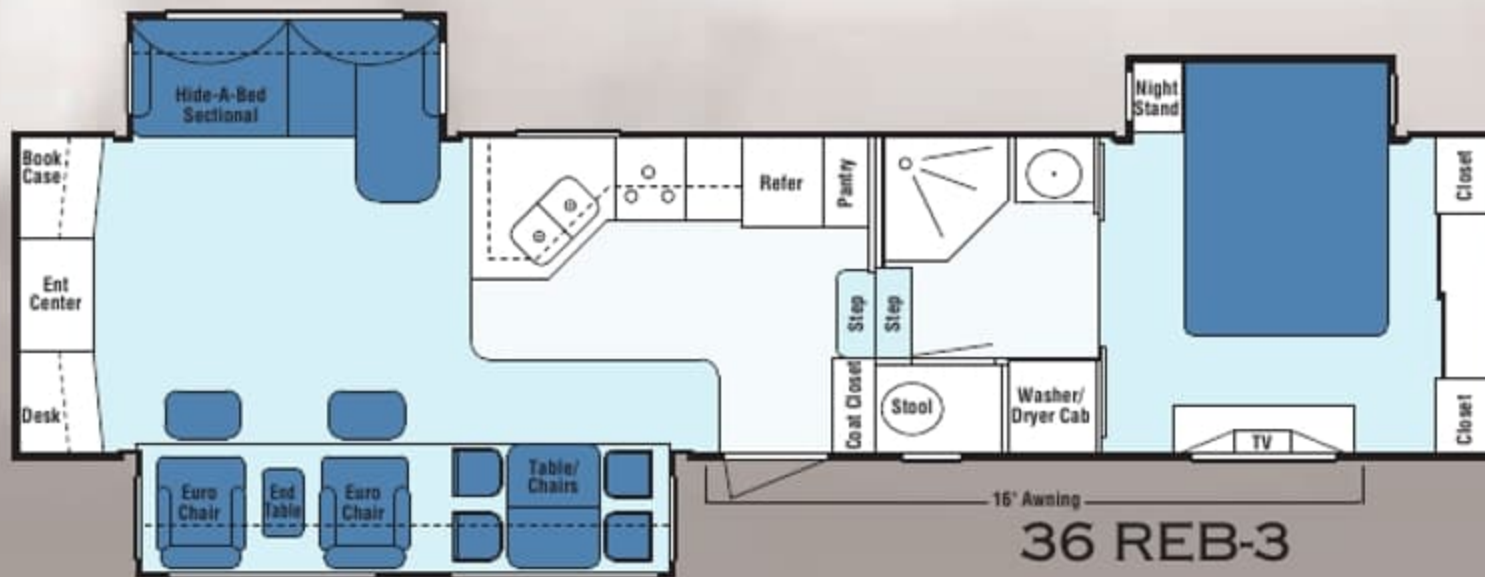
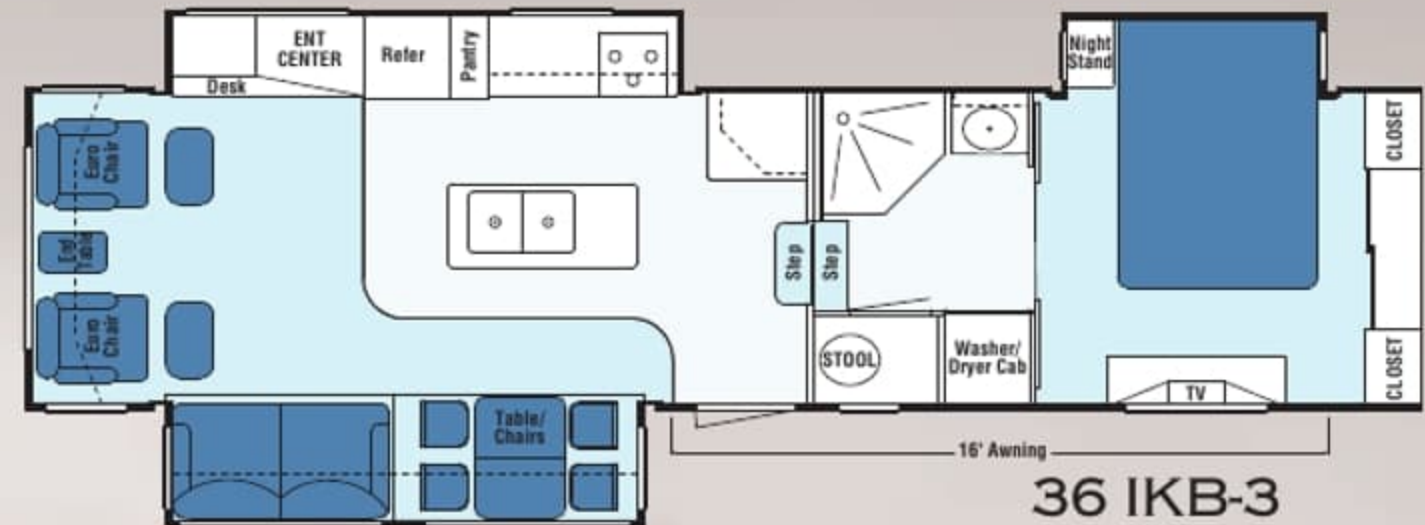
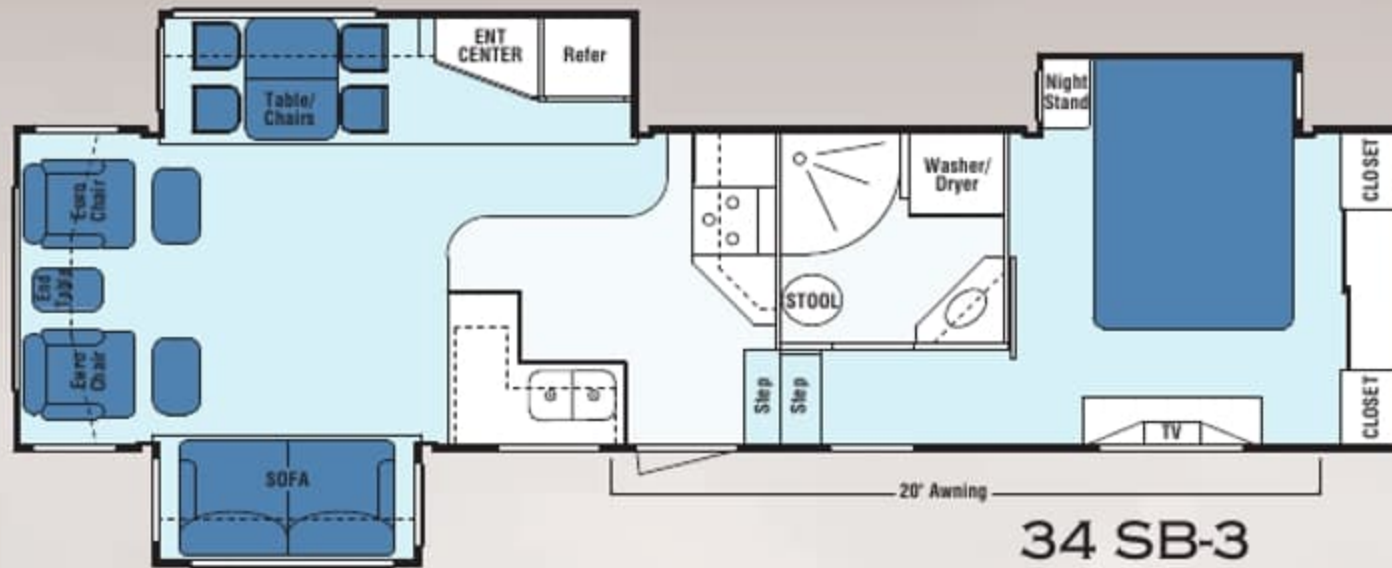
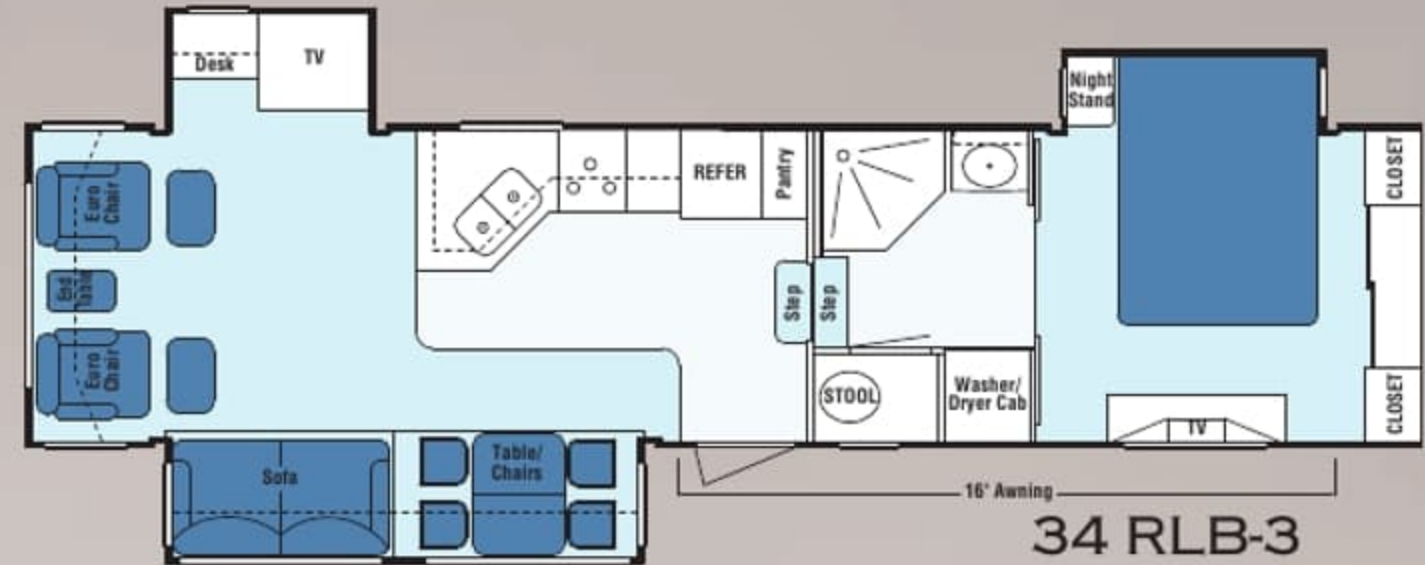
# Floor Plans

LINOLEUM
  CARPET
  FURNITURE



# Floor Plans

LINOLEUM
  CARPET
  FURNITURE



# Montego Bay

# Specifications

Montego Bay	30 KSB-3	34-SB-3	34 RLB-3	36 REB-3	36 IKB-3	37 RLB-4
UVW (Unloaded Vehicle Weight)	11677	11927	11877	12397	12067	TBD
Dry Hitch Weight	2450	2492	2285	2312	2232	TBD
Dry Axle Weight	9227	9435	9592	10085	9835	TBD
NCC (Net Carrying Capacity)	4323	4073	4123	3603	3933	TBD
GVWR	16000	16000	16000	16000	16000	16000
Interior Height	93"	93"	93"	93"	93"	93"
Exterior Width	96"	96"	96"	96"	96"	96"
Exterior Length	35' 2"	37'	37' 3"	38' 7"	37' 4"	TBD
Exterior Height	153"	153"	153"	153"	153"	153"
Fresh Water Capacity (gal)	55	55	55	55	55	55
Waste Water Capacity (gal)	50	50	50	50	50	50
Grey Water Capacity (gal)	50	50	50	50	50	50
Tire Size	ST 235-80R16	ST 235-80R16	ST 235-80R16	ST 235-80R16	ST 235-80R16	LT 235-85R16
Axle Rating	(2) 7000	(2) 7000	(2) 7000	(2) 7000	(2) 7000	(2) 7000

## STANDARD FEATURES

### Body and Frame Construction

- All Aluminum Double Welded Cage Construction
- Gel Coat High Gloss Fiberglass Sidewalls
- 7000# Axles with Easy Lube Hubs
- Tinted Windows with Safety Glass
- Deluxe Exterior Graphics
- 8 Lug HD Aluminum Wheels
- Roof Ladder
- Extended Pin Box
- Fold Out Entry Grab Handle
- Manual Rear Stabilizer Jacks
- Electric Power Front Jacks
- Shock Absorbers
- Spare Tire with Hoist
- Tinted Skylight at Shower Area
- Fully Enclosed Underbelly
- Pass-Through "Basement" Storage
- 1/2" Plywood Roof Decking
- Fiberglass Front and Rear Cap
- 5/8" Tongue and Groove Plywood Floor Decking
- 18" "Box" Beam/"1" Beam Stack Chassis
- (2) 30 Lb. LP Bottles
- Exterior Awning

### Appliances and Electronics

- 8 Cu. Ft. Refrigerator/Freezer with Wood Raised Panel Insert
- 22" Broiler Oven with 3 Burner Cook Top and Cover
- 27" Flat Screen TV
- Surround Sound System with DVD Player
- Pre-Wire for Satellite
- 30" Residential Over-The-Range Microwave (vented-outside)
- TV Antenna with Booster

### Interior Features

- Maple Cabinetry Decor
- All Cabinets Pre-Drilled and Screwed with Hidden European Style Hinges
- Corian™ Countertops/Kitchen and Lavatory
- Day/Night Shades
- Crown Molding
- Ball Bearing Full Extension Drawer Guides
- TV Slider/Swivel Shelf
- Bedding Package with Bedsprad and Pillow Shams
- Brushed Nickel Cabinet Hardware
- Deluxe Window Valances and Lambrequins

### Furniture

- Euro Recliners with Ottoman
- Pillow Top 80" Mattress
- Dining Table with Adjustable Top and Leaf
- (4) High Back Chairs
- Residential Style Hide-A-Bed Sofa by Williamsburg
- Designer Headboard

### Electrical

- 50 Amp Service with Detachable Cord
- 65 Amp Power Converter
- 12 Volt Deep Cycle Battery
- Convenient Electric Command Center
- Fluorescent Lighting in Living Areas
- (2) Exterior Security Lights
- Porch Light
- Deluxe Accent Light Package
- Overhead Ceiling Fan
- Upgraded Wall Switches
- 120 Volt Exterior Receptacle
- Hitch Light
- 12 Volt Battery Disconnect

### Heat/Ventilation/A/C

- 15,000 BTU Air Conditioner
- 35,000 BTU Furnace
- Preparation for 2nd A/C in Bedroom
- Fantastic Fan in Living Area

- Solid Wood Furnace Return Air Cover
- In-Floor Ducted Heat System
- Ducted Supply and Return for Air Conditioning
- Residential Style Commode Room Exhaust Fan

### ADDITIONAL OPTIONS:

- Central Vacuum
- Fantastic Fan in Bath
- Fireplace
- 2nd 13.5 A/C in Bedroom
- Heat Pump Upgrade
- 12 Cu. Ft. Side x Side Refrigerator (subject to floor plan)
- Icemaker in Refrigerator (subject to floor plan)
- King Size Bed
- Cherry Color Cabinetry
- 19" LCD TV in Bedroom
- CSA (Canadian requirement)
- Plumb for Washer/Dryer
- Generator Prep
- Disc Brakes
- Thermopane Windows
- Automatic Dome Satellite
- 5th Airborne Hitch
- Slide Out Covers

### Plumbing System

- Neo-Angle Fiberglass 1 Piece Shower with Brushed Nickel Style Shower Door
- Black Tank Flush System
- 10 Gallon Gas/Electric Water Heater
- Heated Grey, Black, and Freshwater Tanks
- Stainless Steel Kitchen Sink

- Exterior "Hook-up" Center with Cable, Water, and Phone Connections along with an Exterior Shower
- Winterization Package
- Brushed Nickel Style Kitchen Faucet
- Solid Surface Lavatory Sink
- Sewer Hose Storage

- 40 Lb. LP Bottles
- 16 Gal. Gas/Electric DSI Water Heater
- "G" Rated Tires



OPTIONAL GRAPHICS SHOWN

# Specifications

Montego Bay	30 KSB-3	34-SB-3	34 RLB-3	36 REB-3	36 IKB-3	37 RLB-4
UVW (Unloaded Vehicle Weight)	11677	11927	11877	12397	12067	TBD
Dry Hitch Weight	2450	2492	2285	2312	2232	TBD
Dry Axle Weight	9227	9435	9592	10085	9835	TBD
NCC (Net Carrying Capacity)	4323	4073	4123	3603	3933	TBD
GVWR	16000	16000	16000	16000	16000	16000
Interior Height	93"	93"	93"	93"	93"	93"
Exterior Width	96"	96"	96"	96"	96"	96"
Exterior Length	35' 2"	37'	37' 3"	38' 7"	37' 4"	TBD
Exterior Height	153"	153"	153"	153"	153"	153"
Fresh Water Capacity (gal)	55	55	55	55	55	55
Waste Water Capacity (gal)	50	50	50	50	50	50
Grey Water Capacity (gal)	50	50	50	50	50	50
Tire Size	ST 235-80R16	ST 235-80R16	ST 235-80R16	ST 235-80R16	ST 235-80R16	LT 235-85R16
Axle Rating	(2) 7000	(2) 7000	(2) 7000	(2) 7000	(2) 7000	(2) 7000

## STANDARD FEATURES

### Body and Frame Construction

- All Aluminum Double Welded Cage Construction
- Gel Coat High Gloss Fiberglass Sidewalls
- 7000# Axles with Easy Lube Hubs
- Tinted Windows with Safety Glass
- Deluxe Exterior Graphics
- 8 Lug HD Aluminum Wheels
- Roof Ladder
- Extended Pin Box
- Fold Out Entry Grab Handle
- Manual Rear Stabilizer Jacks
- Electric Power Front Jacks
- Shock Absorbers
- Spare Tire with Hoist
- Tinted Skylight at Shower Area
- Fully Enclosed Underbelly
- Pass-Through "Basement" Storage
- 1/2" Plywood Roof Decking
- Fiberglass Front and Rear Cap
- 5/8" Tongue and Groove Plywood Floor Decking
- 18" "Box" Beam/"I" Beam Stack Chassis
- (2) 30 Lb. LP Bottles
- Exterior Awning

### Appliances and Electronics

- 8 Cu. Ft. Refrigerator/Freezer with Wood Raised Panel Insert
- 22" Broiler Oven with 3 Burner Cook Top and Cover
- 27" Flat Screen TV
- Surround Sound System with DVD Player
- Pre-Wire for Satellite
- 30" Residential Over-The-Range Microwave (vented-outside)
- TV Antenna with Booster

### Interior Features

- Maple Cabinetry Decor
- All Cabinets Pre-Drilled and Screwed with Hidden European Style Hinges
- Corian™ Countertops/Kitchen and Lavatory
- Day/Night Shades
- Crown Molding
- Ball Bearing Full Extension Drawer Guides
- TV Slider/Swivel Shelf
- Bedding Package with Bedspread and Pillow Shams
- Brushed Nickel Cabinet Hardware
- Deluxe Window Valances and Lambrequins

### Furniture

- Euro Recliners with Ottoman
- Pillow Top 80" Mattress
- Dining Table with Adjustable Top and Leaf
- (4) High Back Chairs
- Residential Style Hide-A-Bed Sofa by Williamsburg
- Designer Headboard

### Electrical

- 50 Amp Service with Detachable Cord
- 65 Amp Power Converter
- 12 Volt Deep Cycle Battery
- Convenient Electric Command Center
- Fluorescent Lighting in Living Areas
- (2) Exterior Security Lights
- Porch Light
- Deluxe Accent Light Package
- Overhead Ceiling Fan
- Upgraded Wall Switches
- 120 Volt Exterior Receptacle
- Hitch Light
- 12 Volt Battery Disconnect

### Heat/Ventilation/A/C

- 15,000 BTU Air Conditioner
- 35,000 BTU Furnace
- Preparation for 2nd A/C in Bedroom
- Fantastic Fan in Living Area

- Solid Wood Furnace Return Air Cover
- In-Floor Ducted Heat System
- Ducted Supply and Return for Air Conditioning
- Residential Style Commode Room Exhaust Fan

### ADDITIONAL OPTIONS:

- Central Vacuum
- Fantastic Fan in Bath
- Fireplace
- 2nd 13.5 A/C in Bedroom
- Heat Pump Upgrade
- 12 Cu. Ft. Side x Side Refrigerator (subject to floor plan)
- Icemaker in Refrigerator (subject to floor plan)
- King Size Bed
- Cherry Color Cabinetry
- 19" LCD TV in Bedroom
- CSA (Canadian requirement)
- Plumb for Washer/Dryer
- Generator Prep
- Disc Brakes
- Thermopane Windows
- Automatic Dome Satellite
- 5th Airborne Hitch
- Slide Out Covers

### Plumbing System

- Neo-Angle Fiberglass 1 Piece Shower with Brushed Nickel Style Shower Door
- Black Tank Flush System
- 10 Gallon Gas/Electric Water Heater
- Heated Grey, Black, and Freshwater Tanks
- Stainless Steel Kitchen Sink

- Exterior "Hook-up" Center with Cable, Water, and Phone Connections along with an Exterior Shower
- Winterization Package
- Brushed Nickel Style Kitchen Faucet
- Solid Surface Lavatory Sink
- Sewer Hose Storage



OPTIONAL GRAPHICS SHOWN

# Montego Bay



KZRV, L.P.  
0985 NORTH 900 WEST  
SHIPSHEWANA, IN 46565  
PH: 260-768-4016  
WWW.KZ-RV.COM

Dealer:

K-100-296

Due to continual research and advances, manufacturer reserves the right to change specifications, design, price and equipment without notice, and assumes no responsibility for any error in this literature. Some items shown are not included as standard or optional equipment. 2007 K-Z



# Montego Bay



KZRV, L.P.  
0985 NORTH 900 WEST  
SHIPSHEWANA, IN 46565  
PH: 260-768-4016  
WWW.KZ-RV.COM

Dealer:

K-100-296

Due to continual research and advances, manufacturer reserves the right to change specifications, design, price and equipment without notice, and assumes no responsibility for any error in this literature. Some items shown are not included as standard or optional equipment. 2007 K-Z

