



MONACO®

DRIVING YOUR DREAM.

CAMELOT™

 | 08





**MONACO**

DRIVING YOUR DREAM.

CAMELOT™

 | **08**



CAMELOT™

THE LEGEND OF CAMELOT LIVES ON.

Did the idyllic world of Camelot ever really exist? It does now. Welcome to the 2008 Camelot. This is one coach that knows how to make you blissfully happy — with not just one but two LCD TVs, sumptuous furnishings and cabinetry, crown molding, and exquisite options like the leather sofa and living room tile shown here. Climb aboard, and experience the legendary luxury that is Camelot.

**COCKPIT.** After the driving's done, you can unwind in these luscious Ultraleather™ recliners. The 32" flatscreen LCD TV is now standard, and you can choose from two digital satellite options for coast-to-coast coverage of all your favorite TV shows. A new home theater system with DVD player, speakers and woofer rounds out the package.



#### WHAT'S NEW FOR '08.

- LCD televisions throughout
- New home theater system
- Newly restyled cabinet doors
- Larger windows in dinette slide-out
- Hydraulic slide-outs on front slide-out boxes



1-PIECE WINDSHIELD



CAMELOT™

THE LEGEND OF CAMELOT LIVES ON.

Did the idyllic world of Camelot ever really exist? It does now. Welcome to the 2008 Camelot. This is one coach that knows how to make you blissfully happy — with not just one but two LCD TVs, sumptuous furnishings and cabinetry, crown molding, and exquisite options like the leather sofa and living room tile shown here. Climb aboard, and experience the legendary luxury that is Camelot.

**COCKPIT.** After the driving's done, you can unwind in these luscious Ultraleather™ recliners. The 32" flatscreen LCD TV is now standard, and you can choose from two digital satellite options for coast-to-coast coverage of all your favorite TV shows. A new home theater system with DVD player, speakers and woofer rounds out the package.



#### WHAT'S NEW FOR '08.

- LCD televisions throughout
- New home theater system
- Newly restyled cabinet doors
- Larger windows in dinette slide-out
- Hydraulic slide-outs on front slide-out boxes



1-PIECE WINDSHIELD



LUXURY. INNOVATION. HAPPY TRAVELERS. IT ALL SAYS MONACO.

INTERIOR



Wherever you travel across America, it's easy to spot the Monaco owners. They're the ones with the smug, happy grins on their faces. And who could blame them? When you own a Monaco, you own the best. The best in luxury, performance, safety, technology and comfort. It's all here. And it's all yours for the taking. Come on, freedom lovers. Make your move to Monaco luxury. After all, you already know how to grin.



42PDQ | NATURAL CHERRY | JAMOCHA CREAMITE

LUXURY. INNOVATION. HAPPY TRAVELERS. IT ALL SAYS MONACO.

INTERIOR



Wherever you travel across America, it's easy to spot the Monaco owners. They're the ones with the smug, happy grins on their faces. And who could blame them? When you own a Monaco, you own the best. The best in luxury, performance, safety, technology and comfort. It's all here. And it's all yours for the taking. Come on, freedom lovers. Make your move to Monaco luxury. After all, you already know how to grin.



42PDQ | NATURAL CHERRY | JAMOCHA CREAM II



NEXT COURSE: CONVENIENCE.



NEXT COURSE: CONVENIENCE.





42PDQ | NATURAL CHERRY | JAMOCHA CREAM III



Remember, fellow travelers. Your job is to conquer the nation's highways and byways — not an unruly collection of pots and pans. That's why we created a kitchen that's super simple to use. Here you'll find everything you need, intelligently organized and ready to work. There's a convection microwave that bakes, broils and microwaves. A high-output cooktop with three sealed burners to protect against spills. And a roomy 12 cu. ft. four-door refrigerator to keep everything cold.

If you like things clean and tidy, you're going to love the polished solid surface countertops, decorative tile backsplash, and ceramic tile floors. Ah yes, the good life is now served.

**CENTRAL VACUUM SYSTEM.** You'll wish you had this nifty option at home. All you do is attach the hose to the plug-ins located in every room. There's no clunky canister to lug around.

**MAIN CONTROL PANEL.** For ease of operation, we've located the controls for all major systems on one centralized panel. Air conditioning, water pump, slide-outs, generator, tank level monitors — they're all right here at your fingertips.

**DINETTE.** Table for two? Ours comes with a polished solid surface top with tiered edging and two upholstered dinette chairs. Table for four? Just pull out the two extra folding chairs from the closet.





Remember, fellow travelers. Your job is to conquer the nation's highways and byways — not an unruly collection of pots and pans. That's why we created a kitchen that's super simple to use. Here you'll find everything you need, intelligently organized and ready to work. There's a convection microwave that bakes, broils and microwaves. A high-output cooktop with three sealed burners to protect against spills. And a roomy 12 cu. ft. four-door refrigerator to keep everything cold.

If you like things clean and tidy, you're going to love the polished solid surface countertops, decorative tile backsplash, and ceramic tile floors. Ah yes, the good life is now served.

**CENTRAL VACUUM SYSTEM.** You'll wish you had this nifty option at home. All you do is attach the hose to the plug-ins located in every room. There's no clunky canister to lug around.

**MAIN CONTROL PANEL.** For ease of operation, we've located the controls for all major systems on one centralized panel. Air conditioning, water pump, slide-outs, generator, tank level monitors — they're all right here at your fingertips.

**DINETTE.** Table for two? Ours comes with a polished solid surface top with tiered edging and two upholstered dinette chairs. Table for four? Just pull out the two extra folding chairs from the closet.





A KING BED? NO, YOU'RE NOT DREAMING.



A KING BED? NO, YOU'RE NOT DREAMING.



42-PDQ NATURAL CHERRY JAMOCHA CREAM II

As one might expect with a coach named Camelot, a king bed comes standard on all 42-foot floorplans. That's an impressive 72 by 80 inches of regal comfort. Want even more? Try the optional comfort air mattress that lets you select your own level of back support.

Whether you choose a king or queen floorplan, one thing is certain. You'll be surrounded in luxury — with polished solid surface tops on the dresser and nightstands, a decorative headboard, and day/night pleated blackout shades. Why, even your clothes get the royal treatment in their oversized wardrobe closet with satin nickel mirrored door frames.

**LCD TELEVISION.** This year, all televisions have been upgraded to high-end LCD models, including the 20" TV in the bedroom. For late night movie viewing, you can also choose the available bedroom DVD player shown here.

**BATHROOM.** Ready for a relaxing shower? The 42PDQ comes with a round, one-piece shower with reeded glass door. Very nice. Other amenities include satin nickel bath accessories, a polished solid surface countertop with integrated sink and Corian® backsplash. There's also a bath-and-a-half floorplan on the 42DSQ you won't want to miss.





JAMOCHA CREAM II

NATURAL CHERRY

42PDQ

As one might expect with a coach named Camelot, a king bed comes standard on all 42-foot floorplans. That's an impressive 72 by 80 inches of regal comfort. Want even more? Try the optional comfort air mattress that lets you select your own level of back support.

Whether you choose a king or queen floorplan, one thing is certain. You'll be surrounded in luxury — with polished solid surface tops on the dresser and nightstands, a decorative headboard, and day/night pleated blackout shades. Why, even your clothes get the royal treatment in their oversized wardrobe closet with satin nickel mirrored door frames.

**LCD TELEVISION.** This year, all televisions have been upgraded to high-end LCD models, including the 20" TV in the bedroom. For late night movie viewing, you can also choose the available bedroom DVD player shown here.

**BATHROOM.** Ready for a relaxing shower? The 42PDQ comes with a round, one-piece shower with reeded glass door. Very nice. Other amenities include satin nickel bath accessories, a polished solid surface countertop with integrated sink and Corian® backsplash. There's also a bath-and-a-half floorplan on the 42DSQ you won't want to miss.



Granted, there are no fuzzy red ropes cordoning it off, but the driver's seat of the 2008 Camelot is *the* place to be. Slide in. You're sitting on a luxurious Ultraleather™ captain's chair that adjusts six ways at the touch of a button. Now grab the wheel. It's our lighted VIP Smartwheel® with multiplexed controls for wipers, ICC and cruise control. Everything you need is right at your fingertips.

Other driver-friendly features include adjustable brake and accelerator pedals, anti-lock brakes, available GPS, and a mighty 400 HP Cummins® diesel engine to power you along. Climb aboard the 2008 Camelot. After all, you're the guest of honor.

**PASS-THROUGH STORAGE.** It's amazing what you can fit in our large, pass-through storage bays. And with the handy slide-out tray (now standard), loading and unloading is a snap. Don't miss the side-hinged baggage doors, either. They're thoughtfully designed to open *out* instead of up, so you won't keep bumping your head on the door.

**AWNINGS.** To keep you happily shaded, the Camelot comes with standard awnings just about everywhere there's sun. For added convenience, the patio and front door awnings are fully automatic.



Granted, there are no fuzzy red ropes cordoning it off, but the driver's seat of the 2008 Camelot is *the* place to be. Slide in. You're sitting on a luxurious Ultraleather™ captain's chair that adjusts six ways at the touch of a button. Now grab the wheel. It's our lighted VIP Smartwheel® with multiplexed controls for wipers, ICC and cruise control. Everything you need is right at your fingertips.

Other driver-friendly features include adjustable brake and accelerator pedals, anti-lock brakes, available GPS, and a mighty 400 HP Cummins® diesel engine to power you along. Climb aboard the 2008 Camelot. After all, you're the guest of honor.

**PASS-THROUGH STORAGE.** It's amazing what you can fit in our large, pass-through storage bays. And with the handy slide-out tray (now standard), loading and unloading is a snap. Don't miss the side-hinged baggage doors, either. They're thoughtfully designed to open *out* instead of up, so you won't keep bumping your head on the door.

**AWNINGS.** To keep you happily shaded, the Camelot comes with standard awnings just about everywhere there's sun. For added convenience, the patio and front door awnings are fully automatic.





CAMELOT™  
COCKPIT/EXTERIOR



42 PDQ | NATURAL CHERRY | JAMOCHA CREAM II



RESERVED SEATING.

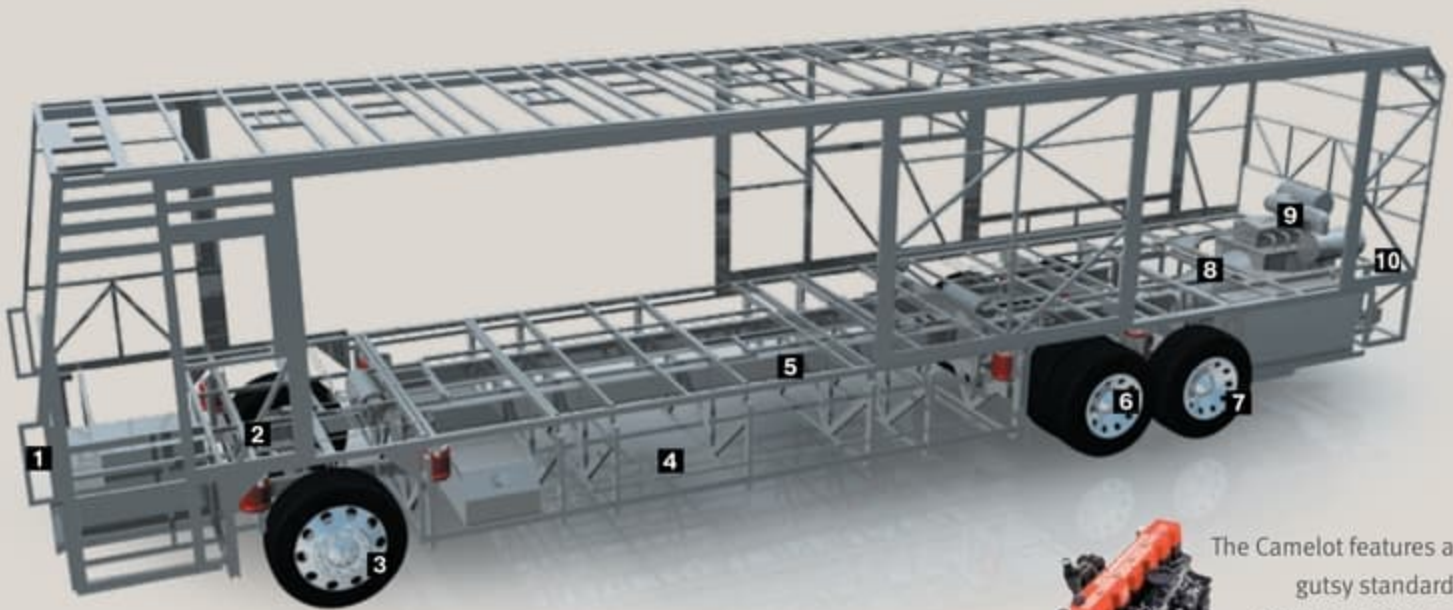
CAMELOT™  
COCKPIT/EXTERIOR



42PDQ | NATURAL CHERRY | JAMOCHA CREAM II



RESERVED SEATING.



The Camelot features a gutsy standard Cummins® ISL 400 diesel engine.



**ROADMASTER RR10S—SERIES CHASSIS** Available on the 42D5Q, 42PDQ, 42KFQ  
**ROADMASTER RR8S—SERIES CHASSIS** Available on the 36PDQ, 40PDQ

**1** Equipped with a steel firewall and steel stepwell for added safety.

**2** Three monitored leveling sensors (two in the rear, one in the front) continually adjust the air pressure within each air bag to maintain a level ride and eliminate nosediving, weight transfer, and floating on curved roads.

**3** Automatic Traction Control (ATC) eliminates wheel slippage in slick conditions and heightens control. The Anti-Lock Braking System (ABS), with front disc brakes and rear drum brakes, gives you superior stopping power, especially on steep grades. Together, these sophisticated systems offer the very best safety on the road.

**4** Our exclusive raised rail design provides for larger full pass-through storage bays with flush floors.

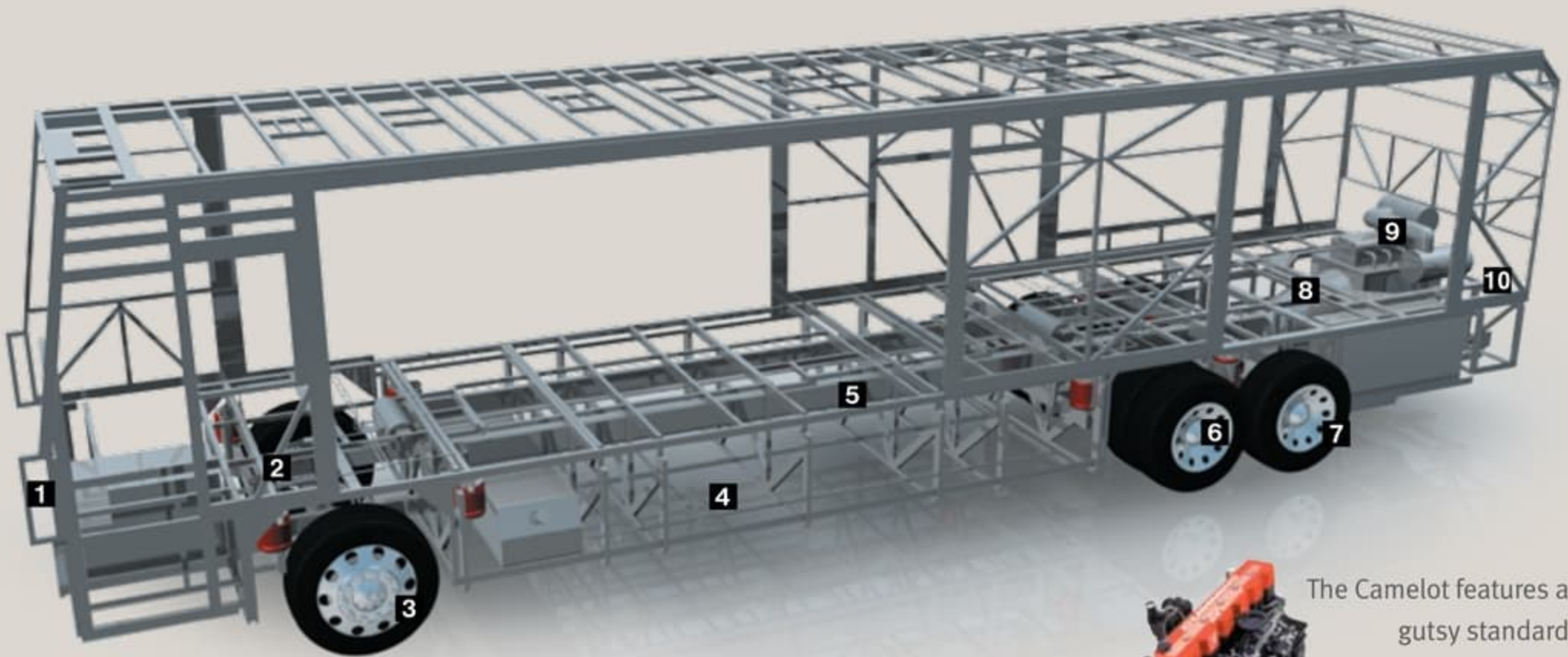
**5** Frame rails are constructed of 3-1/2" by 6-1/4" by 3/8" 100,000 PSI steel for greater strength; a side-mounted aluminum radiator and intercooler reduce weight, won't rust, and deliver better heat transfer than steel cooling components.

**6** The Cushion Air Glide suspension features 10 gas-charged shocks and 10 air bags, 8 of which are outboard mounted (RR10S). The RR8S-Series chassis features 8 gas-charged shocks and 8 outboard-mounted air bags.

## MAY WE BUILD YOU A CHASSIS?

Did you know that every Roadmaster chassis is custom designed and built for the Monaco coach that will ride on it? It's a novel idea, but our owners seem to like it. And it pays off — in better performance, safety and reliability. Owners also like the fact that Roadmaster, a division of

Monaco Coach Corporation, only does one thing: They build chassis for motorhomes. Not trucks. Not buses. Just motorhomes. So naturally, they do it better. No wonder Roadmaster is the leading high-end diesel chassis manufacturer in America.



The Camelot features a gutsy standard Cummins® ISL 400 diesel engine.



**ROADMASTER RR10S—SERIES CHASSIS** Available on the 42DSQ, 42PDQ, 42KFQ  
**ROADMASTER RR8S—SERIES CHASSIS** Available on the 36PDQ, 40PDQ

- 1** Equipped with a steel firewall and steel stepwell for added safety.
- 2** Three monitored leveling sensors (two in the rear, one in the front) continually adjust the air pressure within each air bag to maintain a level ride and eliminate nosediving, weight transfer, and floating on curved roads.

- 3** Automatic Traction Control (ATC) eliminates wheel slippage in slick conditions and heightens control. The Anti-Lock Braking System (ABS), with front disc brakes and rear drum brakes, gives you superior stopping power, especially on steep grades. Together, these sophisticated systems offer the very best safety on the road.

- 4** Our exclusive raised rail design provides for larger full pass-through storage bays with flush floors.

- 5** Frame rails are constructed of 3-1/2" by 6-1/4" by 3/8" 100,000 PSI steel for greater strength; a side-mounted aluminum radiator and intercooler reduce weight, won't rust, and deliver better heat transfer than steel cooling components.
- 6** The Cushion Air Glide suspension features 10 gas-charged shocks and 10 air bags, 8 of which are outboard mounted (RR10S). The RR8S-Series chassis features 8 gas-charged shocks and 8 outboard-mounted air bags.

## MAY WE BUILD YOU A CHASSIS?

Did you know that every Roadmaster chassis is custom designed and built for the Monaco coach that will ride on it? It's a novel idea, but our owners seem to like it. And it pays off — in better performance, safety and reliability. Owners also like the fact that Roadmaster, a division of

Monaco Coach Corporation, only does one thing: They build chassis for motorhomes. Not trucks. Not buses. Just motorhomes. So naturally, they do it better. No wonder Roadmaster is the leading high-end diesel chassis manufacturer in America.

## OUTBOARD AIR BAG SUSPENSION

The outboard-mounted air bags are protected by two steel plates and are placed farther apart than the competition, providing a wider and more stable platform for the coach. The active suspension automatically adjusts the pressure of the air bags as you drive and virtually eliminates nosediving and the side-to-side body sway associated with high wind conditions, curvy roads and emergency maneuvers.



## WARRANTIES

12 MONTH/24,000 MILE basic limited warranty

5 YEAR/50,000 MILE limited warranty on aluminum or steel frame structure of sidewall, roof, front and rear cap

3 YEAR/50,000 MILE limited warranty on Roadmaster chassis

Applies to certain models. See owner's manual for complete details.

**7** Goodyear tires 295/80R/22.5

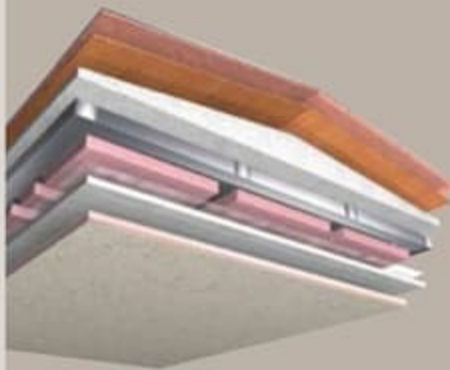
**8** Allison® 3000 MH 6-speed World Transmission with electronic shifter.

Our exclusive use of synthetic transmission fluid allows for up to three-year maintenance intervals for the Allison® transmission.

**9** Cummins® ISL 400 HP diesel engine.

**10** A 10,000 lb. tow hitch rating is the highest in its class. Prewired for supplemental braking system that works with your tow vehicle.

## CAMELOT™ CONSTRUCTION



### ROOF CONSTRUCTION:

(top to bottom)

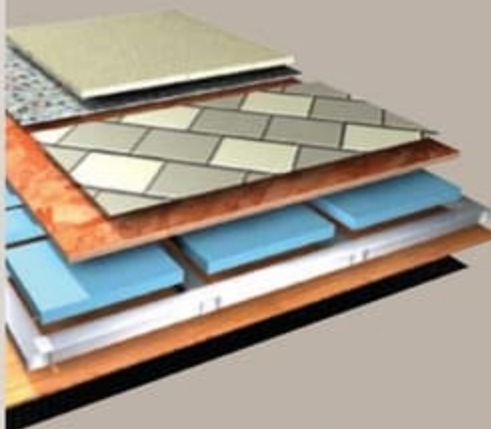
- 1/4" seamless one-piece crowned fiberglass roof
- Luaun backing
- 2-1/2" thick, tapered bead foam insulation
- 1-1/2" x 3" aluminum I-beam superstructure on 16" centers is filled with 3" fiberglass insulation
- Vapor barrier
- Structure foam: thermal insulative barrier
- 1/2" bead foam insulation
- Foam padding for extra insulation
- Padded vinyl ceiling



### SIDEWALL CONSTRUCTION:

(left to right)

- High-gloss gel coat fiberglass
- 1-1/2" thick Dow Structure Foam® insulation
- 1-1/2" x 1-1/2" square tubular aluminum frame
- 1/8" luaun
- Wallpaper



### FLOOR CONSTRUCTION:

(top to bottom)

- Carpet pad and carpeting or tile
- Structurwood™
- 1-1/2" Dow Structure Foam® insulation
- 1-1/2" x 1-1/2" square tubular frame
- 1/8" luaun
- Waterproof Darco underbelly



ASSISTANCE

SALES • TECH • ROADSIDE

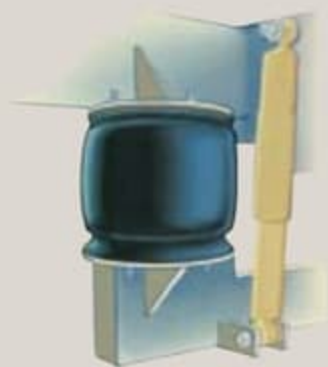
1-877-4MONACO

## WE'RE HERE. ANYTIME, EVERY TIME.

- Reach us anytime — literally — via our live customer support line.
- Drive in to one of our 350 Service Centers.
- Enjoy the first year free when you enroll in our Owner Advantage Roadside Assistance Program.
- See where it all begins with a tour of one of our facilities in Indiana or Oregon. Call 1-800-650-7337 or 1-800-634-0855 to find out more.

## OUTBOARD AIR BAG SUSPENSION

The outboard-mounted air bags are protected by two steel plates and are placed farther apart than the competition, providing a wider and more stable platform for the coach. The active suspension automatically adjusts the pressure of the air bags as you drive and virtually eliminates nosediving and the side-to-side body sway associated with high wind conditions, curvy roads and emergency maneuvers.



## WARRANTIES

12 MONTH/24,000 MILE basic limited warranty

5 YEAR/50,000 MILE limited warranty on aluminum or steel frame structure of sidewall, roof, front and rear cap

3 YEAR/50,000 MILE limited warranty on Roadmaster chassis

Applies to certain models. See owner's manual for complete details.

**7** Goodyear tires 295/80R/22.5

**8** Allison® 3000 MH 6-speed World Transmission with electronic shifter.

Our exclusive use of synthetic transmission fluid allows for up to three-year maintenance intervals for the Allison® transmission.

**9** Cummins® ISL 400 HP diesel engine.

**10** A 10,000 lb. tow hitch rating is the highest in its class. Prewired for supplemental braking system that works with your tow vehicle.

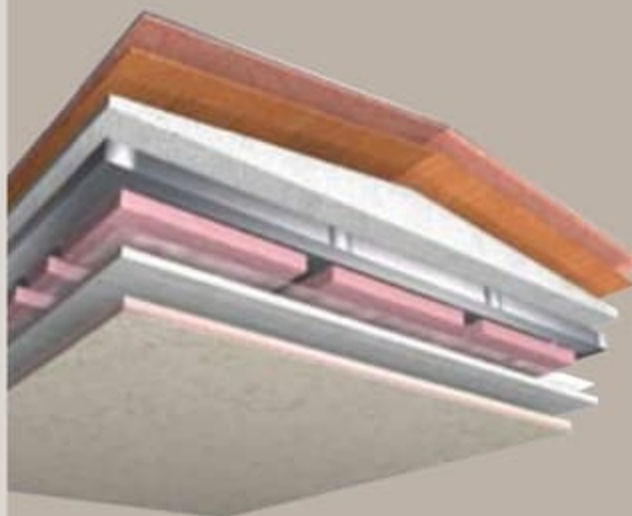
CAMELOT™  
CONSTRUCTION



## ROOF CONSTRUCTION:

(top to bottom)

- 1/4" seamless one-piece crowned fiberglass roof
- Luaun backing
- 2-1/2" thick, tapered bead foam insulation
- 1-1/2" x 3" aluminum I-beam superstructure on 16" centers is filled with 3" fiberglass insulation
- Vapor barrier
- Structure foam: thermal insulative barrier
- 1/2" bead foam insulation
- Foam padding for extra insulation
- Padded vinyl ceiling



## SIDEWALL CONSTRUCTION:

(left to right)

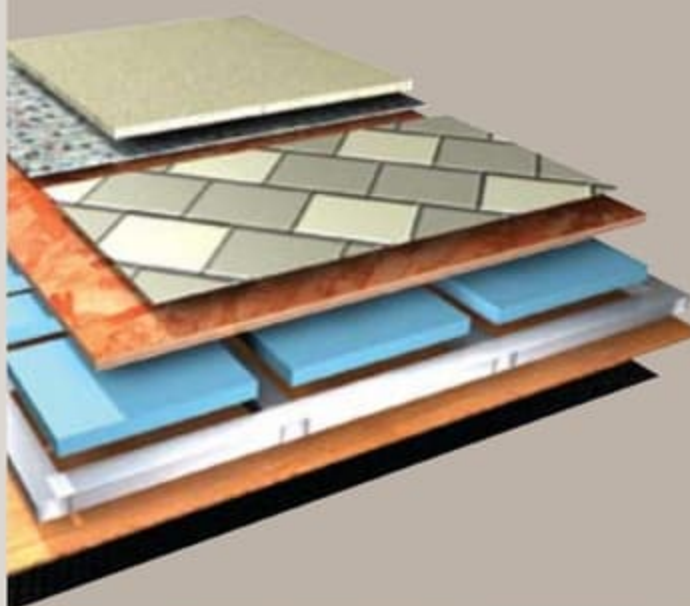
- High-gloss gel coat fiberglass
- 1-1/2" thick Dow Structure Foam® insulation
- 1-1/2" x 1-1/2" square tubular aluminum frame
- 1/8" luaun
- Wallpaper



## FLOOR CONSTRUCTION:

(top to bottom)

- Carpet pad and carpeting or tile
- Structurwood™
- 1-1/2" Dow Structure Foam® insulation
- 1-1/2" x 1-1/2" square tubular frame
- 1/8" luaun
- Waterproof Darco underbelly



ASSISTANCE

SALES • TECH • ROADSIDE

1-877-4MONACO

WE'RE HERE. ANYTIME, EVERY TIME.

- Reach us anytime — literally — via our live customer support line.
- Drive in to one of our 350 Service Centers.
- Enjoy the first year free when you enroll in our Owner Advantage Roadside Assistance Program.
- See where it all begins with a tour of one of our facilities in Indiana or Oregon. Call 1-800-650-7337 or 1-800-634-0855 to find out more.

STAINED OAK



NATURAL OAK



STAINED CHERRY



BAJA SANDS II



GOLDEN TWILIGHT



RALPH LAUREN YORKSHIRE



- Carpet A
- Dinette B
- Sofa C
- Bedsread D

A	B	C	D

STAINED OAK



NATURAL OAK



STAINED CHERRY



BAJA SANDS II



GOLDEN TWILIGHT



RALPH LAUREN YORKSHIRE



- Carpet A
- Dinette B
- Sofa C
- Bedspread D

A	B	C	D



CAMELOT™  
EXTERIOR COLORS, FABRICS AND WOODS



NATURAL CHERRY



SPICED MAPLE



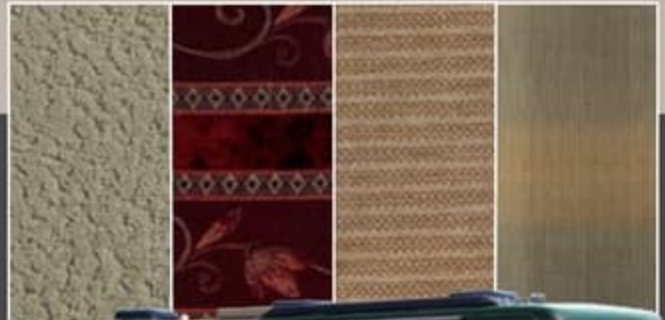
WHICH WAY WILL YOU GO?

We know you love choices. That's why our designers give you so many tempting options. From mild to wild, discriminating to daring, Monaco offers lots of fun ways to go.

JAMOCHA CREAM II



SAPPHIRE MEADOW II



Notes: Colors depicted are a reasonable representation though they may not be an exact match of the actual colors due to variances in processing and production. See your dealer for actual fabric and paint chip samples.

CAMELOT™  
EXTERIOR COLORS, FABRICS AND WOODS



NATURAL CHERRY



SPICED MAPLE



WHICH WAY WILL YOU GO?

We know you love choices. That's why our designers give you so many tempting options. From mild to wild, discriminating to daring, Monaco offers lots of fun ways to go.

JAMOCHA CREAM II



SAPPHIRE MEADOW II



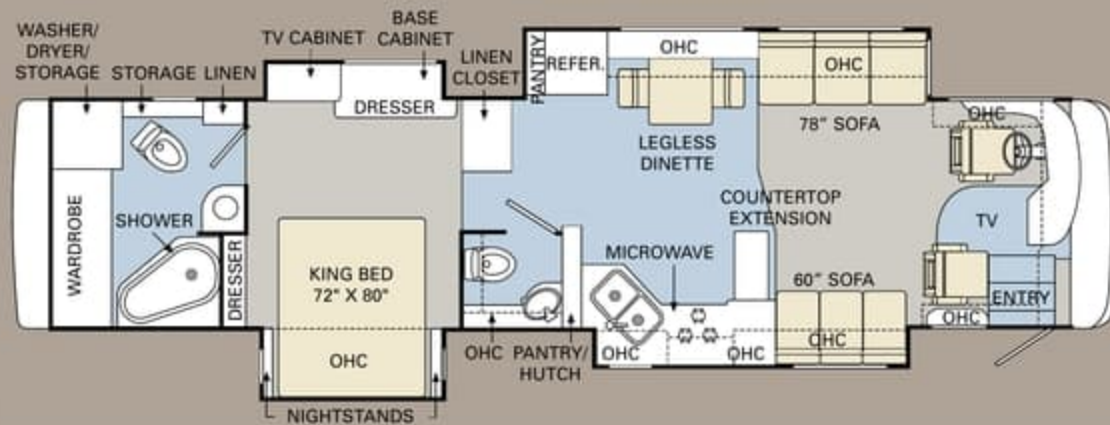
Note: Colors depicted are a reasonable representation though they may not be an exact match of the actual colors due to variances in processing and production. See your dealer for actual fabric and paint chip samples.



36PDQ



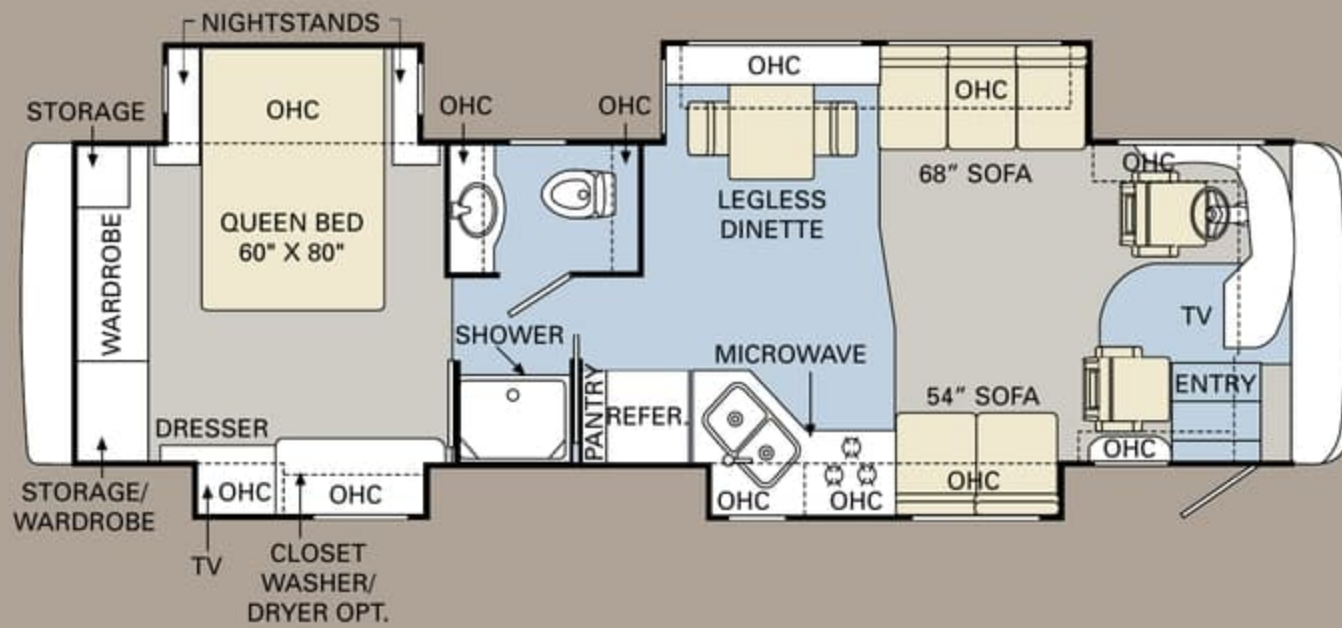
40PDQ



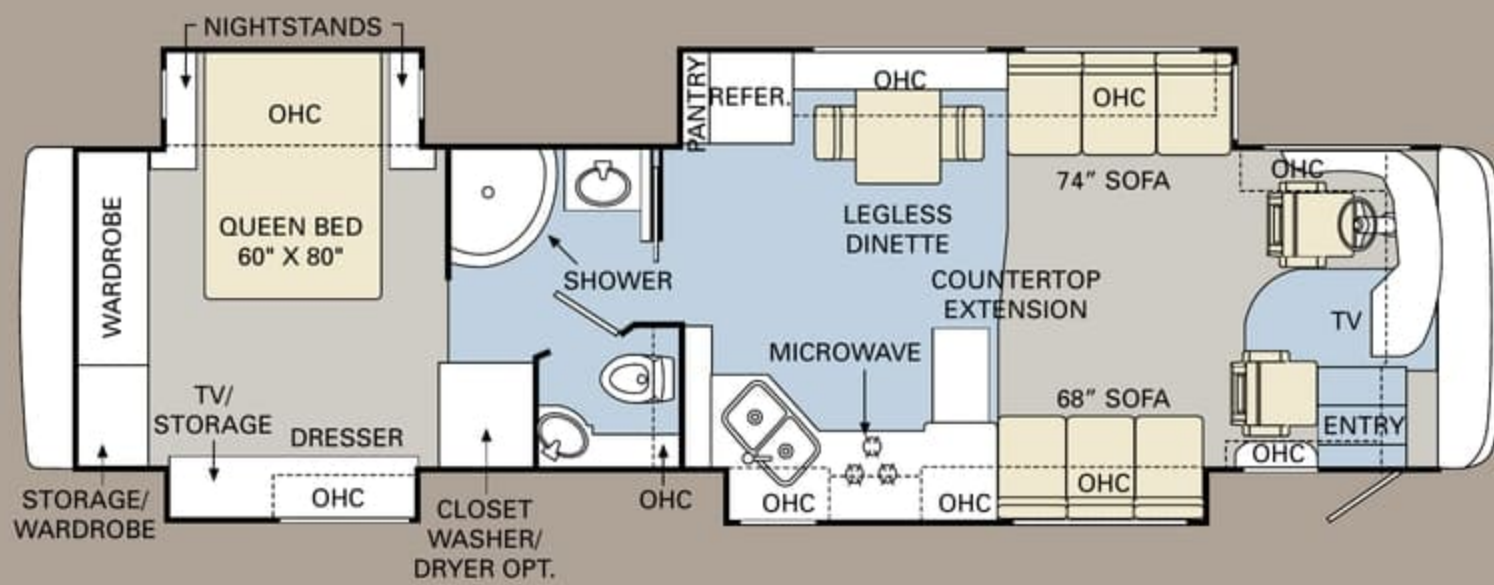
42DSQ

■ TILE ■ CARPET

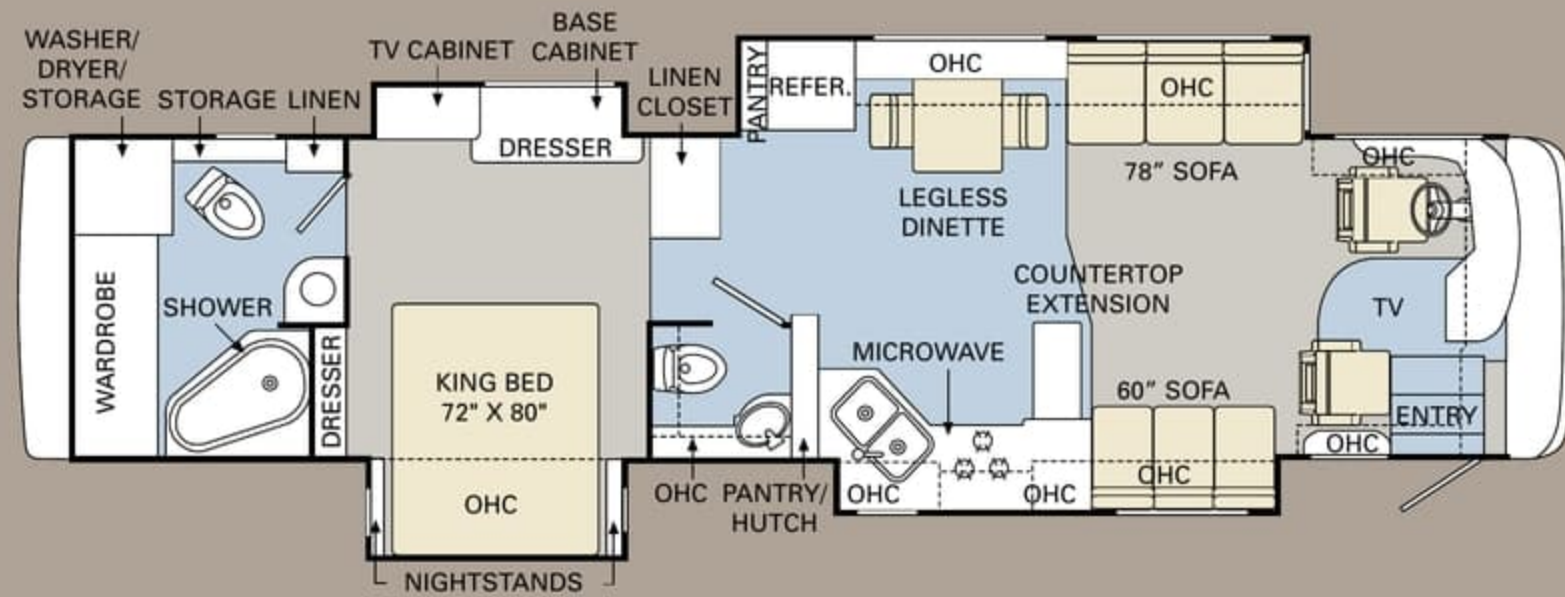
Ready to choose? The Camelot is available in five large, livable floorplans from 36 to 42 feet. All floorplans come with quad slide-outs for the ultimate in spaciousness.



36PDQ



40PDQ



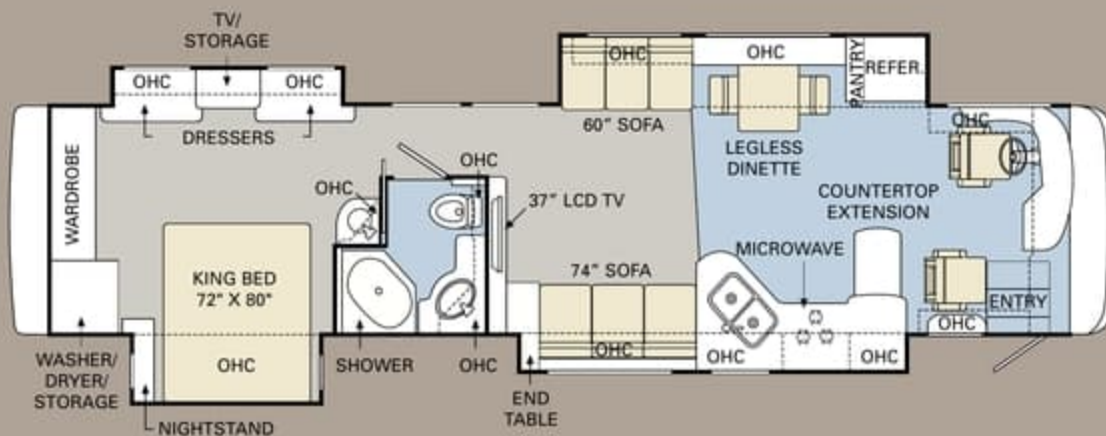
42DSQ

TILE CARPET

Ready to choose? The Camelot is available in five large, livable floorplans from 36 to 42 feet. All floorplans come with quad slide-outs for the ultimate in spaciousness.



42PDQ

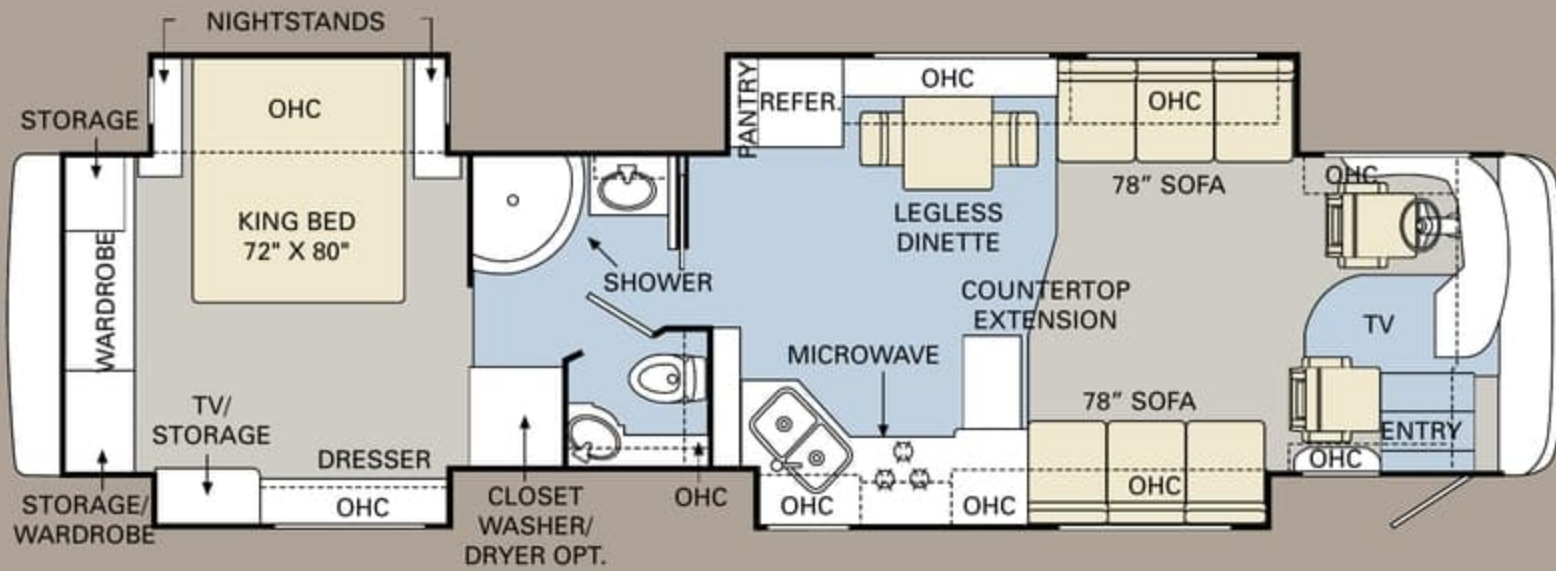


42KFQ

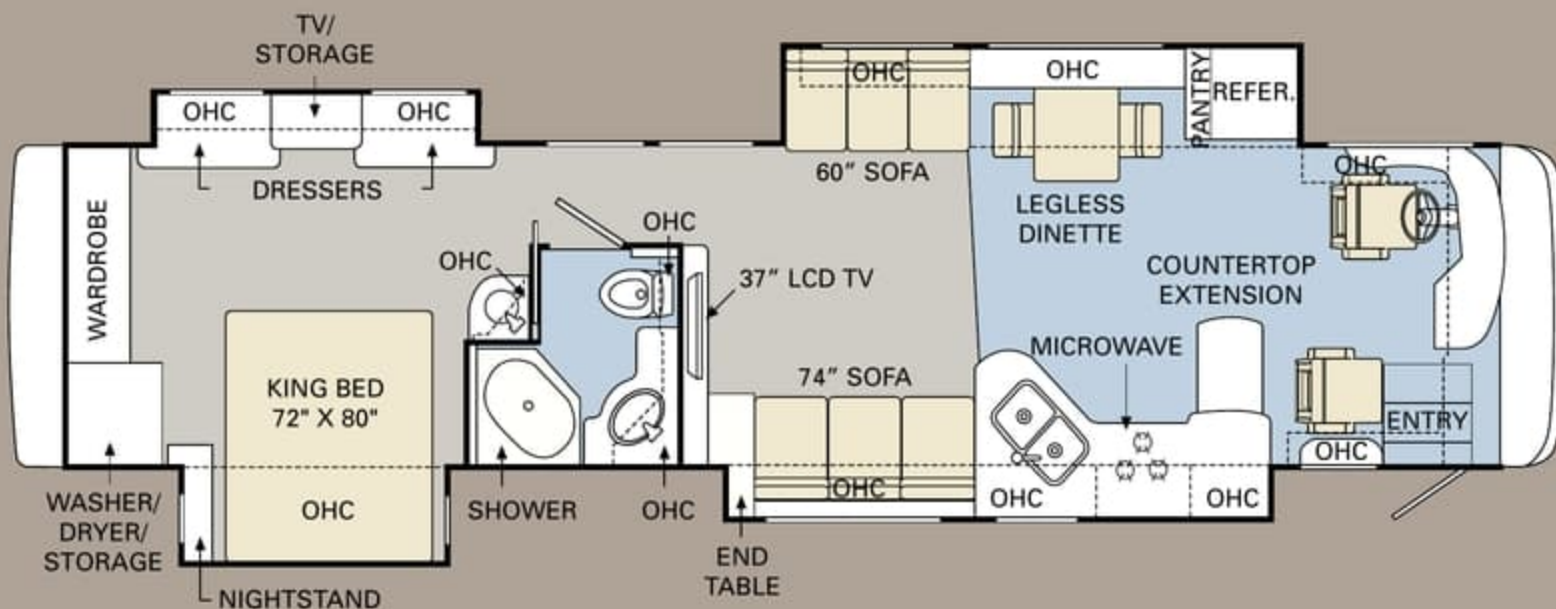
ALL ROADS LEAD TO [WWW.MONACOCOACH.COM](http://WWW.MONACOCOACH.COM).

Wherever the road takes you, you're never more than a click away from your friends at Monaco. Just go to [www.monacocoach.com](http://www.monacocoach.com) for all the latest product news, club dates and destinations, a dealer locator function, and factory tour information. You can also e-mail us directly through the site at any time.





42PDQ



42KFQ

ALL ROADS LEAD TO [WWW.MONACOCOACH.COM](http://WWW.MONACOCOACH.COM).

Wherever the road takes you, you're never more than a click away from your friends at Monaco. Just go to [www.monacocoach.com](http://www.monacocoach.com) for all the latest product news, club dates and destinations, a dealer locator function, and factory tour information. You can also e-mail us directly through the site at any time.





# SPECIFICATIONS

Due to continuous product improvement, please see the website for the latest in standards and options, specifications, and technical data. *Go to [www.monacocoach.com](http://www.monacocoach.com).*

	Weight Ratings (Lbs.)					Measurements	Wheelbase	Overall Length	Overall Height (with A/C) (add 5" for satellite option)	Interior Height	Interior Width	Exterior Width	Tank Capacity (Gals.) <sup>1</sup>				
	Gross Vehicle	Gross Combined <sup>2</sup>	Front Gross Axle	Rear Gross Axle	Tag Axle								Water Heater	Gray Tank	Black Tank	Fresh Tank	LP Tank <sup>3</sup>
36PDQ	34,600	44,600	14,600	23,000	N/A	224"	36' 10"	12' 10"	84"	96"	100.5"	10	78	44	100	31	130
40PDQ	34,600	44,600	14,600	23,000	N/A	272"	40' 10"	12' 10"	84"	96"	100.5"	10	78	44	100	31	130
42DSQ	44,600	54,600	14,600	20,000	10,000	270.25"	42' 10"	12' 10"	84"	96"	100.5"	10	78	44	100	31	130
42PDQ	44,600	54,600	14,600	20,000	10,000	270.25"	42' 10"	12' 10"	84"	96"	100.5"	10	78	44	100	31	130
42KFQ	44,600	54,600	14,600	20,000	10,000	270.25"	42' 10"	12' 10"	84"	96"	100.5"	10	78	44	100	31	130

<sup>1</sup>Towing capacity is limited by GCWR; your vehicle's towing capacity is the difference between the GCWR and the actual vehicle weight, including all water, fuel, passengers and cargo. Your towed vehicle should be equipped with auxiliary brakes if the weight of the towed vehicle exceeds 1,000 lbs. Consult your owner's manual for further towing information.

<sup>2</sup>All tank capacities are estimated based upon calculations provided by the tank manufacturers and represent approximate capacities. The actual "usable capacity" may be greater or less than the estimated capacities based upon fabrication and installation of the tanks.

<sup>3</sup>Actual filled LP capacity is 80% of listing due to safety shut-off required on tank.

The actual overall length of the recreational vehicle may differ from that indicated in the brochure due to variances in the manufacturing process and/or installed components. The actual length may be greater or less than that indicated. Due to the large variety of options and floorplan arrangements available to our customers, actual weights for each unit can differ significantly. Monaco Coach provides a weight sticker on each unit we produce which includes that unit's tank capacities and approximate weight. Consult your local Monaco Coach dealer for unit availability and further information. The information printed in this brochure reflects product design, fabrication, and component parts at the date of printing. The manufacturer reserves the right, at any time, to make changes in product design or material or component specifications as its sole option, without notice. This

includes the substitution of components of a different brand or trade name which will result in comparable performance. All information printed in this brochure is subject to change after the date of printing. Some features shown or mentioned in this brochure are optional and may only be available in selected floorplans. Photographs may show props or decorations that are not standard equipment on Monaco Coach models. Monaco Coach, the Monaco logo and its design, are registered trademarks. All other products and company names are trademarks and/or registered trademarks of their respective holders. While the color of the motorhome's exterior and the interior fabrics depicted in this sales brochure are fair and reasonable depictions, the colors depicted may not be an exact match of the actual colors because of the variances in photo-processing and variances caused by inserting the photographs

within the sales brochure. Due to product improvements, changes during the model year and/or transcription errors that may occur, information represented within this brochure may not be accurate at the time of your purchase. If certain information is significant to your purchasing decision, please confirm the information with your dealer prior to submitting your order. Component part and appliance manufacturers issue limited warranties covering those portions of the recreational vehicle not covered by the Limited Warranties issued by Monaco Coach Corporation. To learn which specific component parts and appliances are excluded from the Limited Warranties issued by Monaco Coach Corporation, please contact your selling dealership or Monaco Coach Corporation directly, or review the warranty packet inside the recreational vehicle.

## BODY CONSTRUCTION

- Aluminum Superstructure
- Seamless One-Piece Molded Crowned Fiberglass Roof
- Interior Height 84"
- Foam Insulated Floor Framing with 3-Ply Underbelly
- Laminated Smooth Gel Coat Fiberglass Exterior Walls
- Front Molded Fiberglass Cap
- Rear Molded Fiberglass Cap with Integrated Air Intake
- Panaview™ 1-Piece Front Windshield
- One-Piece Generator Access Door
- Electric Flush-Mounted Stepwell Cover
- Aluminum Framed Laminated Floor on Steel Trusses
- Laminated Structurwood™ Flooring
- Dual Head Power Controlled Heated Exterior Mirrors with Turn Indicator Lights
- Docking Lights
- Side-Hinged Baggage Doors with Chrome Door Latches
- 3M Film Front Mask
- Full-Length Monaco Mud Flap
- Storage Bay Slide-Out Tray — Pass-Through
- Ozite Lined Pass-Through Storage Compartments
- Flush-Mounted Metal Fuel Doors
- Deluxe Full-Body Paint
- Roof Ladder
- Undercoating

## OPTIONS

- "Super Savings Package" Includes:
  - 3-Camera Rear Vision System with Audio and Adjustable Center Camera; Aladdin™ Junior; Solid Surface Kitchen Sink; Auto Generator Start; Power Water Hose Reel; RV Sani-Con Tank Drainage System
  - Storage Bay Slide-Out Tray — Pass-Through



# SPECIFICATIONS

Due to continuous product improvement, please see the website for the latest in standards and options, specifications, and technical data. *Go to [www.monacocoach.com](http://www.monacocoach.com).*

	Weight Ratings (Lbs.)					Measurements	Tank Capacity (Gal.) <sup>2</sup>										
	Gross Vehicle	Gross Combined <sup>1</sup>	Front Gross Axle	Rear Gross Axle	Tag Axle		Wheelbase	Overall Length	Overall Height (with A/C) (add 5" for satellite option)	Interior Height	Interior Width	Exterior Width	Water Heater	Gray Tank	Black Tank	Fresh Tank	LP Tank <sup>3</sup>
36PDQ	34,600	44,600	14,600	23,000	N/A	224"	36' 10"	12' 10"	84"	96"	100.5"	10	78	44	100	31	130
40PDQ	34,600	44,600	14,600	23,000	N/A	272"	40' 10"	12' 10"	84"	96"	100.5"	10	78	44	100	31	130
42DSQ	44,600	54,600	14,600	20,000	10,000	270.25"	42' 10"	12' 10"	84"	96"	100.5"	10	78	44	100	31	130
42PDQ	44,600	54,600	14,600	20,000	10,000	270.25"	42' 10"	12' 10"	84"	96"	100.5"	10	78	44	100	31	130
42KFQ	44,600	54,600	14,600	20,000	10,000	270.25"	42' 10"	12' 10"	84"	96"	100.5"	10	78	44	100	31	130

<sup>1</sup>Towing capacity is limited by GCWR; your vehicle's towing capacity is the difference between the GCWR and the actual vehicle weight, including all water, fuel, passengers and cargo. Your towed vehicle should be equipped with auxiliary brakes if the weight of the towed vehicle exceeds 1,000 lbs. Consult your owner's manual for further towing information.

<sup>2</sup>All tank capacities are estimated based upon calculations provided by the tank manufacturers and represent approximate capacities. The actual "usable capacity" may be greater or less than the estimated capacities based upon fabrication and installation of the tanks.

<sup>3</sup>Actual filled LP capacity is 80% of listing due to safety shut-off required on tank.

The actual overall length of the recreational vehicle may differ from that indicated in the brochure due to variances in the manufacturing process and/or installed components. The actual length may be greater or less than that indicated. Due to the large variety of options and floorplan arrangements available to our customers, actual weights for each unit can differ significantly. Monaco Coach provides a weight sticker on each unit we produce which includes that unit's tank capacities and approximate weight. Consult your local Monaco Coach dealer for unit availability and further information. The information printed in this brochure reflects product design, fabrication, and component parts at the date of printing. The manufacturer reserves the right, at any time, to make changes in product design or material or component specifications as its sole option, without notice. This

includes the substitution of components of a different brand or trade name which will result in comparable performance. All information printed in this brochure is subject to change after the date of printing. Some features shown or mentioned in this brochure are optional and may only be available in selected floorplans. Photographs may show props or decorations that are not standard equipment on Monaco Coach models. Monaco Coach, the Monaco logo and its design, are registered trademarks. All other products and company names are trademarks and/or registered trademarks of their respective holders. While the color of the motorhome's exterior and the interior fabrics depicted in this sales brochure are fair and reasonable depictions, the colors depicted may not be an exact match of the actual colors because of the variances in photo-processing and variances caused by inserting the photographs

within the sales brochure. Due to product improvements, changes during the model year and/or transcription errors that may occur, information represented within this brochure may not be accurate at the time of your purchase. If certain information is significant to your purchasing decision, please confirm the information with your dealer prior to submitting your order. Component part and appliance manufacturers issue limited warranties covering those portions of the recreational vehicle not covered by the Limited Warranties issued by Monaco Coach Corporation. To learn which specific component parts and appliances are excluded from the Limited Warranties issued by Monaco Coach Corporation, please contact your selling dealership or Monaco Coach Corporation directly, or review the warranty packet inside the recreational vehicle.

## BODY CONSTRUCTION

- › Aluminum Superstructure
- › Seamless One-Piece Molded Crowned Fiberglass Roof
- › Interior Height 84"
- › Foam Insulated Floor Framing with 3-Ply Underbelly
- › Laminated Smooth Gel Coat Fiberglass Exterior Walls
- › Front Molded Fiberglass Cap
- › Rear Molded Fiberglass Cap with Integrated Air Intake
- › Panaview™ 1-Piece Front Windshield
- › One-Piece Generator Access Door
- › Electric Flush-Mounted Stepwell Cover
- › Aluminum Framed Laminated Floor on Steel Trusses
- › Laminated Structurwood™ Flooring
- › Dual Head Power Controlled Heated Exterior Mirrors with Turn Indicator Lights
- › Docking Lights
- › Side-Hinged Baggage Doors with Chrome Door Latches
- › 3M Film Front Mask
- › Full-Length Monaco Mud Flap
- › Storage Bay Slide-Out Tray — Pass-Through
- › Ozite Lined Pass-Through Storage Compartments
- › Flush-Mounted Metal Fuel Doors
- › Deluxe Full-Body Paint
- › Roof Ladder
- › Undercoating

## OPTIONS

- › "Super Savings Package" Includes:
  - › 3-Camera Rear Vision System with Audio and Adjustable Center Camera; Aladdin™ Junior; Solid Surface Kitchen Sink; Auto Generator Start; Power Water Hose Reel; RV Sani-Con Tank Drainage System
  - › Storage Bay Slide-Out Tray — Pass-Through





## CHASSIS/ENGINE/SUSPENSION

- Roadmaster RR8S — Series Chassis (36PDQ, 40PDQ)
- Roadmaster RR10S — Series Chassis (42DSQ, 42PDQ, 42KFQ)
- Cummins® ISL 400 Electronic Engine with Allison® 3000 MH 6-Speed World Transmission and Electronic Shifter
- Torque (@ 1,300 RPM) 1,200 lbs./ft. Max. Net
- Engine Displacement: 540"/8.9L
- Aluminum Side-Mounted Radiator with CAC Cooler
- Dual Fuel Fill
- 160 Amp Alternator
- Rear Axle Ratio: 4.30:1
- Tires: 295/80R/22.5

- Polished Aluminum Wheels
- Cushion Air Glide Suspension with Eight Outboard-Mounted Air Bags and Eight Shock Absorbers (36PDQ, 40PDQ)
- Cushion Air Glide Suspension with Ten Air Bags and Ten Shock Absorbers (42DSQ, 42PDQ, 42KFQ)
- Anti-Lock Braking System with Front Disc Brakes and Rear Drum Brakes
- Tag Axle with Anti-Lock Braking System (42DSQ, 42PDQ, 42KFQ)
- Automatic Traction Control
- Cummins® Variable Geometry Turbo Exhaust Brake

- Auto Slack Adjusters on Brakes
- Prewire for Supplemental Braking System
- Engine Block Heater
- Automatic Leveling System
- 10,000 Lb. Hitch Receiver with Dual Connector 4/7-Pin

## OPTIONS

- Air Leveling System (Replaces Standard Hydraulic Levelers)

## COCKPIT

- Automotive Dash with Starburst and Silver Graphite Metallic Instrument Panel
- Color Rear Vision System with Audio and Adjustable Camera
- In-Dash AM/FM/CD Stereo Radio with Sirius-Ready Compatibility and Weather Band
- CB Prep with Antenna
- Power Sunvisors
- Adjustable Brake and Accelerator Pedals
- Lighted VIP Smartwheel® Multiplexed Steering Wheel with Controls for Windshield Wipers, ICC and Cruise Control

- Intermittent Windshield Wipers
- Audible Turn Signals
- Cruise Control Light on Dash
- Roof-Mounted Dual Trumpet Air Horns
- UltraLeather™ Six-Way Power Pilot Seat and Co-Pilot Seat with Power Footrest
- Pilot and Co-Pilot Pull-Down Sunshades
- Carpeted Driver and Passenger Floor Mats

## OPTIONS

- 10-Disc CD Changer
- Interior Solar Privacy Sunscreens
- Message Center
- 3-Camera Rear Vision System with Audio and Adjustable Center Camera
- GPS System
- Sirius Radio Satellite System (Requires Subscription)
- Auxiliary Blower

## APPLIANCES AND ACCESSORIES

- Norcold® 12 Cu. Ft. 2-Way 4-Door Refrigerator with Ice Maker
- High-Output 3-Sealed-Burner Cooktop without Oven
- Spacesaver Convection Microwave with Touch Control
- 32" Flatscreen LCD TV in Front Cockpit Overhead (N/A: 42KFQ)
- 37" Living Area Hutch (42KFQ)
- 20" LCD TV in Bedroom
- Home Theater System
- TV Antenna with Booster
- Exterior Hook-Ups for DSS Dish and Cable
- Digital Satellite System Prep
- Washer/Dryer Prep

## OPTIONS

- Dometic Sidewise 14 Cu. Ft. 2-Way Refrigerator with Water and Ice Dispenser in the Door
- Stainless Steel Package Includes Stainless Steel Refrigerator and Microwave
- Combination Washer/Dryer
- Stackable Washer/Dryer (40PDQ, 42PDQ)
- Bedroom DVD Player

- In-Motion Digital Satellite Dish (Receiver Not Included)
- Central Vacuum
- Exterior Entertainment Center (26" LCD/AM/FM/CD Radio with Two Speakers) (N/A: 42KFQ)



## CHASSIS/ENGINE/SUSPENSION

- › Roadmaster RR8S — Series Chassis (36PDQ, 40PDQ)
- › Roadmaster RR10S — Series Chassis (42DSQ, 42PDQ, 42KFQ)
- › Cummins® ISL 400 Electronic Engine with Allison® 3000 MH 6-Speed World Transmission and Electronic Shifter
- › Torque (@ 1,300 RPM) 1,200 lbs./ft. Max. Net
- › Engine Displacement: 540"/8.9L
- › Aluminum Side-Mounted Radiator with CAC Cooler
- › Dual Fuel Fill
- › 160 Amp Alternator
- › Rear Axle Ratio: 4.30:1
- › Tires: 295/80R/22.5
- › Polished Aluminum Wheels
- › Cushion Air Glide Suspension with Eight Outboard-Mounted Air Bags and Eight Shock Absorbers (36PDQ, 40PDQ)
- › Cushion Air Glide Suspension with Ten Air Bags and Ten Shock Absorbers (42DSQ, 42PDQ, 42KFQ)
- › Anti-Lock Braking System with Front Disc Brakes and Rear Drum Brakes
- › Tag Axle with Anti-Lock Braking System (42DSQ, 42PDQ, 42KFQ)
- › Automatic Traction Control
- › Cummins® Variable Geometry Turbo Exhaust Brake
- › Auto Slack Adjusters on Brakes
- › Prewire for Supplemental Braking System
- › Engine Block Heater
- › Automatic Leveling System
- › 10,000 Lb. Hitch Receiver with Dual Connector 4/7-Pin

### OPTIONS

- › Air Leveling System (Replaces Standard Hydraulic Levelers)

## COCKPIT

- › Automotive Dash with Starburst and Silver Graphite Metallic Instrument Panel
- › Color Rear Vision System with Audio and Adjustable Camera
- › In-Dash AM/FM/CD Stereo Radio with Sirius-Ready Compatibility and Weather Band
- › CB Prep with Antenna
- › Power Sunvisors
- › Adjustable Brake and Accelerator Pedals
- › Lighted VIP Smartwheel® Multiplexed Steering Wheel with Controls for Windshield Wipers, ICC and Cruise Control
- › Intermittent Windshield Wipers
- › Audible Turn Signals
- › Cruise Control Light on Dash
- › Roof-Mounted Dual Trumpet Air Horns
- › Ultraleather™ Six-Way Power Pilot Seat and Co-Pilot Seat with Power Footrest
- › Pilot and Co-Pilot Pull-Down Sunshades
- › Carpeted Driver and Passenger Floor Mats

### OPTIONS

- › 10-Disc CD Changer
- › Interior Solar Privacy Sunscreens
- › Message Center
- › 3-Camera Rear Vision System with Audio and Adjustable Center Camera
- › GPS System
- › Sirius Radio Satellite System (Requires Subscription)
- › Auxiliary Blower

## APPLIANCES AND ACCESSORIES

- › Norcold® 12 Cu. Ft. 2-Way 4-Door Refrigerator with Ice Maker
- › High-Output 3-Sealed-Burner Cooktop without Oven
- › Spacesaver Convection Microwave with Touch Control
- › 32" Flatscreen LCD TV in Front Cockpit Overhead (N/A: 42KFQ)
- › 37" Living Area Hutch (42KFQ)
- › 20" LCD TV in Bedroom
- › Home Theater System
- › TV Antenna with Booster
- › Exterior Hook-Ups for DSS Dish and Cable
- › Digital Satellite System Prep
- › Washer/Dryer Prep

### OPTIONS

- › Dometic Sidewise 14 Cu. Ft. 2-Way Refrigerator with Water and Ice Dispenser in the Door
- › Stainless Steel Package Includes Stainless Steel Refrigerator and Microwave
- › Combination Washer/Dryer
- › Stackable Washer/Dryer (40PDQ, 42PDQ)
- › Bedroom DVD Player
- › In-Motion Digital Satellite Dish (Receiver Not Included)
- › Central Vacuum
- › Exterior Entertainment Center (26" LCD/AM/FM/CD Radio with Two Speakers) (N/A: 42KFQ)

## INTERIOR

- › Gloss Finish Cabinetry Wood: Stained Oak and Natural Oak
- › Solid Wood Raised Panel Cabinet Doors
- › Crown Molding in Bedroom and Living Area
- › Lined Cabinet Shelves
- › Heavy-Duty Ball Bearing Drawer Guides
- › Refrigerator Raised Panel Hardwood Inserts
- › Satin Nickel Cabinetry Hardware
- › Satin Nickel Bath Accessories
- › Radius Polished Solid Surface Kitchen Countertop with Stainless Steel Sink with Two Sink Covers
- › Roll-Out Polished Solid Surface Kitchen Countertop Extension (N/A: 36PDQ)
- › Decorative Tile with Corian® Molding Backsplash in Galley and Lavatory
- › Polished Solid Surface Bathroom Countertop with Integrated Sink
- › Kitchen Overhead Cabinets with Adjustable Shelf
- › Sink and Stovetop Cover Storage Area inside Kitchen Base Cabinet
- › Ceramic Tile Flooring in Kitchen and Bathroom
- › Tile Entry Floor
- › Designer Carpeting in Living Area and Bedroom
- › Soft Touch Padded Vinyl Ceiling
- › Decorative Hardwood Slide-Out Fascia Trim
- › Hardwood Valances with Fabric Accents Throughout
- › Solid Wood Raised Panel Bathroom Door
- › Oversized Rear Wardrobe Closet with Satin Nickel Mirrored Door Frames
- › Decorative Headboard
- › Bedroom Nightstands with Polished Solid Surface Countertops
- › Bedroom Dresser with Polished Solid Surface Countertop and Integrated Hamper
- › Bedroom Dresser/Wardrobe at the Foot of Bed
- › Decorative Mirror with Wainscot Below
- › Bedspread, Pillow Shams and Decorative Pillows
- › Day/Night Pleated Blackout Shades in Living Area and Bedroom
- › Mini Blinds in Kitchen and Private Bath (40PDQ and 42PDQ No Private Bath Window)
- › Soil Repellant Protection on Living Room Fabrics

## OPTIONS

- › Decors: Jamocha Cream II, Baja Sands II, Sapphire Meadow II, Golden Twilight
- › Ralph Lauren Decor: Yorkshire
- › Gloss Finish Cabinetry Wood Choice: Stained Cherry, Natural Cherry, Spiced Maple
- › Full Tile in Living Room
- › Solid Surface Kitchen Sink

## FURNITURE

- › Legless Polished Solid Surface Dinette Table with Two Dinette Chairs and Two Folding Chairs
- › Roadside: Fabric Jackknife Sofa
- › Curbside: Fabric Jackknife Sofa (N/A: 36PDQ)
- › Curbside: Fabric Loveseat (36PDQ)
- › Queen Bed (60" x 80") (36PDQ, 40PDQ)
- › King Bed (72" x 80") (42PDQ, 42DSQ, 42Kfq)

## OPTIONS

- › King Bed (72" x 80") with One Nightstand (40PDQ)
- › Queen Bed Select Comfort Air Mattress (36PDQ, 40PDQ)
- › King Bed Select Comfort Air Mattress (40PDQ, 42PDQ, 42DSQ, 42Kfq)
- › Roadside: Leather Jackknife Sofa
- › Roadside: Fabric Hide-A-Bed Sofa with Air Mattress (N/A: 42Kfq)
- › Roadside: Leather Hide-a-Bed with Air Mattress (N/A: 42Kfq)
- › Roadside: Leather/Fabric Sectional Booth Dinette Ensemble (N/A: 42Kfq)
- › Roadside: Wraparound Computer Desk with Ultraleather™ Euro-Recliner (N/A: 36PDQ, 42DSQ)
- › Curbside: Fabric Hide-A-Bed Sofa with Air Mattress (N/A: 36PDQ, 42DSQ)
- › Curbside: Leather Hide-A-Bed Sofa with Air Mattress (N/A: 36PDQ, 42DSQ)
- › Curbside: Leather Jackknife Sofa (N/A: 36PDQ)
- › Curbside: Leather Loveseat (36PDQ)
- › Curbside: Leather J-Lounge with Drawer (N/A: 36PDQ)

## ELECTRICAL SYSTEMS AND LIGHTS

- › 50 Amp 120V Distribution Panel and Power Cord Reel
- › Battery Maintainer
- › Onan® 8.0 kW Quiet Diesel Generator on Manual Slide-Out (36PDQ, 40PDQ)
- › Onan® 10.0 kW QD Generator on Manual Slide-Out (42PDQ, 42DSQ, 42Kfq)
- › Energy Management System
- › Slide-Out Battery Tray
- › Four 6V Deep Cycle House Batteries
- › Two 12V Heavy-Duty Chassis Batteries
- › Battery Disconnect Switch at Front Door
- › Battery Boost Switch in Cockpit
- › 2,000 Watt Inverter
- › Porch Light
- › Lighted Exterior Power Entry Step
- › Lighted Interior Entry Steps
- › Lights in Outside Storage Compartments
- › 120V Receptacles in Outside Storage Compartment
- › Underhood Utility Light
- › Multiplex 12V Wiring for All Lighting Throughout Interior of Coach
- › Pilot and Co-Pilot Map Lights
- › Fluorescent Light under Kitchen Overhead
- › Fluorescent Ceiling Lights Throughout
- › Fluorescent Ceiling Lights inside Living Area Slide-Out House
- › Satin Nickel Decorative Lighting in Living Room, Dinette and Bath and Bedroom Slide-Out
- › Halogen Lights under Living Room, Dining Room and Bedroom Dresser Overhead Cabinets
- › Satin Nickel Decorative Vanity Light
- › Convenience Center Located in Hallway
- › Prewire for Solar Panel

## OPTIONS

- › Auto Generator Start
- › Solar Panel (65-Watt Wired to Coach Batteries)

## INTERIOR

- › Gloss Finish Cabinetry Wood: Stained Oak and Natural Oak
- › Solid Wood Raised Panel Cabinet Doors
- › Crown Molding in Bedroom and Living Area
- › Lined Cabinet Shelves
- › Heavy-Duty Ball Bearing Drawer Guides
- › Refrigerator Raised Panel Hardwood Inserts
- › Satin Nickel Cabinetry Hardware
- › Satin Nickel Bath Accessories
- › Radius Polished Solid Surface Kitchen Countertop with Stainless Steel Sink with Two Sink Covers
- › Roll-Out Polished Solid Surface Kitchen Countertop Extension (N/A: 36PDQ)
- › Decorative Tile with Corian® Molding Backsplash in Galley and Lavatory
- › Polished Solid Surface Bathroom Countertop with Integrated Sink
- › Kitchen Overhead Cabinets with Adjustable Shelf
- › Sink and Stovetop Cover Storage Area inside Kitchen Base Cabinet
- › Ceramic Tile Flooring in Kitchen and Bathroom
- › Tile Entry Floor
- › Designer Carpeting in Living Area and Bedroom
- › Soft Touch Padded Vinyl Ceiling
- › Decorative Hardwood Slide-Out Fascia Trim
- › Hardwood Valances with Fabric Accents Throughout
- › Solid Wood Raised Panel Bathroom Door
- › Oversized Rear Wardrobe Closet with Satin Nickel Mirrored Door Frames
- › Decorative Headboard
- › Bedroom Nightstands with Polished Solid Surface Countertops
- › Bedroom Dresser with Polished Solid Surface Countertop and Integrated Hamper
- › Bedroom Dresser/Wardrobe at the Foot of Bed
- › Decorative Mirror with Wainscot Below
- › Bedspread, Pillow Shams and Decorative Pillows
- › Day/Night Pleated Blackout Shades in Living Area and Bedroom
- › Mini Blinds in Kitchen and Private Bath (40PDQ and 42PDQ No Private Bath Window)
- › Soil Repellant Protection on Living Room Fabrics

## OPTIONS

- › Decors: Jamocha Cream II, Baja Sands II, Sapphire Meadow II, Golden Twilight
- › Ralph Lauren Decor: Yorkshire
- › Gloss Finish Cabinetry Wood Choice: Stained Cherry, Natural Cherry, Spiced Maple
- › Full Tile in Living Room
- › Solid Surface Kitchen Sink

## FURNITURE

- › Legless Polished Solid Surface Dinette Table with Two Dinette Chairs and Two Folding Chairs
- › Roadside: Fabric Jackknife Sofa
- › Curbside: Fabric Jackknife Sofa (N/A: 36PDQ)
- › Curbside: Fabric Loveseat (36PDQ)
- › Queen Bed (60" x 80") (36PDQ, 40PDQ)
- › King Bed (72" x 80") (42PDQ, 42DSQ, 42KFQ)

## OPTIONS

- › King Bed (72" x 80") with One Nightstand (40PDQ)
- › Queen Bed Select Comfort Air Mattress (36PDQ, 40PDQ)
- › King Bed Select Comfort Air Mattress (40PDQ, 42PDQ, 42DSQ, 42KFQ)
- › Roadside: Leather Jackknife Sofa
- › Roadside: Fabric Hide-A-Bed Sofa with Air Mattress (N/A: 42KFQ)
- › Roadside: Leather Hide-a-Bed with Air Mattress (N/A: 42KFQ)
- › Roadside: Leather/Fabric Sectional Booth Dinette Ensemble (N/A: 42KFQ)
- › Roadside: Wraparound Computer Desk with Ultraleather™ Euro-Recliner (N/A: 36PDQ, 42DSQ)
- › Curbside: Fabric Hide-A-Bed Sofa with Air Mattress (N/A: 36PDQ, 42DSQ)
- › Curbside: Leather Hide-A-Bed Sofa with Air Mattress (N/A: 36PDQ, 42DSQ)
- › Curbside: Leather Jackknife Sofa (N/A: 36PDQ)
- › Curbside: Leather Loveseat (36PDQ)
- › Curbside: Leather J-Lounge with Drawer (N/A: 36PDQ)

## ELECTRICAL SYSTEMS AND LIGHTS

- › 50 Amp 120V Distribution Panel and Power Cord Reel
- › Battery Maintainer
- › Onan® 8.0 kW Quiet Diesel Generator on Manual Slide-Out (36PDQ, 40PDQ)
- › Onan® 10.0 kW QD Generator on Manual Slide-Out (42PDQ, 42DSQ, 42KFQ)
- › Energy Management System
- › Slide-Out Battery Tray
- › Four 6V Deep Cycle House Batteries
- › Two 12V Heavy-Duty Chassis Batteries
- › Battery Disconnect Switch at Front Door
- › Battery Boost Switch in Cockpit
- › 2,000 Watt Inverter
- › Porch Light
- › Lighted Exterior Power Entry Step
- › Lighted Interior Entry Steps
- › Lights in Outside Storage Compartments
- › 120V Receptacles in Outside Storage Compartment
- › Underhood Utility Light
- › Multiplex 12V Wiring for All Lighting Throughout Interior of Coach
- › Pilot and Co-Pilot Map Lights
- › Fluorescent Light under Kitchen Overhead
- › Fluorescent Ceiling Lights Throughout
- › Fluorescent Ceiling Lights inside Living Area Slide-Out House
- › Satin Nickel Decorative Lighting in Living Room, Dinette and Bath and Bedroom Slide-Out
- › Halogen Lights under Living Room, Dining Room and Bedroom Dresser Overhead Cabinets
- › Satin Nickel Decorative Vanity Light
- › Convenience Center Located in Hallway
- › Prewire for Solar Panel

## OPTIONS

- › Auto Generator Start
- › Solar Panel (65-Watt Wired to Coach Batteries)



## PLUMBING AND LP SYSTEMS

- Demand Water System and Water Pump
- 10-Gallon LP Gas/Electric Water Heater with Electronic Ignition
- Single Lever Satin Nickel Kitchen Faucet with Pullout Sprayer
- Central Water Filtration System
- Single Handle Satin Nickel Bath Faucet
- Single Handle Satin Nickel Shower Faucet with Slide Bar and Shut-Off Valve at Shower Head
- Exterior Tank Monitoring Gauges
- Water Heater Bypass Valve
- Water Pump Switch in Convenience Center, Service Bay and Bath
- China Toilet (40PDQ, 42PDQ, 42DSQ, 42KFQ)
- China Toilet Electronic Silent Plus (36PDQ, 42DSQ)
- Shower inside Wet Bay with Hot/Cold Water
- No-Fuss Flush Holding Tank Rinsing System
- Gravity and Pressurized Water Fill
- Insulated Systems Compartment with Easy Access to Hook-Up
- Sewer Hose Storage (Deleted When RV Sani-Con Tank Drainage System Is Selected)
- One-Piece Round Shower with Reeded Glass Door (40PDQ, 42PDQ)
- One-Piece Rectangular Shower with Obscured Glass Door (36PDQ)
- One-Piece Neo-Angled Shower with Obscured Glass Door (42KFQ)
- One-Piece Pear-Shaped Tub with Obscured Glass Door (42DSQ)
- Satin Nickel Shower Door Frame with Decorative Glass

## OPTIONS

- Power Water Hose Reel
- RV Sani-Con Tank Drainage System
- Electric Automatic Winterization
- Neo-Angled Bathtub (N/A: 36PDQ, 42DSQ)

## HEATING, VENTS AND AIR CONDITIONING

- Dual 13.5M BTU Roof Air Conditioners with Ducted Air, Heat Pumps and Digital Thermostat Control (36PDQ, 40PDQ)
- Three 13.5M BTU Roof Air Conditioners with Wall Thermostat and Heat Pump (42PDQ, 42DSQ, 42KFQ)
- 51M BTU (31M and 20M) Dual Zone Electronic Ignition Furnaces
- Electronic AC/Heat Climate Control System
- In-Floor Ducted Heating System
- 12V Attic Fan in Kitchen, Hall Bath and Private Bath
- 12V Heater in Wet Bay

## OPTIONS

- Aqua-Hot® 450 Water and Heating System (Engine Preheat Included)
- Ceiling Fan in Bedroom (N/A: 36PDQ)
- Dual 15M BTU Roof Air Conditioner with Ducted Air, Heat Pumps and Digital Thermostat Control (36PDQ, 40PDQ)
- Two 15M BTU Roof Air Conditioners and One 13.5M BTU Roof Air Conditioner with Wall Thermostats and Heat Pumps (42PDQ, 42DSQ, 42KFQ)

## WINDOWS, DOORS AND AWNINGS

- Radius Flush-Mounted Dual Pane Safety Glass Dark Tinted Slider Windows
- Front Entry Door with Removable Screen and Anti-Skid Steps
- Keyless Entry in Grab Handle with Baggage Door Lock Release and Doorbell
- Metal Interior Grab Handle at Entry Door and on Dash across from Passenger Seat
- Eclipse Automatic Patio Awning
- Automatic Front Door Awning
- Topper Slide-Out Awnings Living Area and Bedroom with Metal Covers
- Window Awnings on All Windows except Slide-Out Windows under Patio Awning
- Tinted Skylight in Bathroom with Protecta Glaze

## OPTIONS

- Apex Automatic Patio Awning with Remote

## SAFETY

- Fire Extinguisher
- Deadbolt Lock on Entrance Door
- 120V GFI Protected Circuit (Kitchen, Bath and Exterior)
- LP Gas Detector
- Smoke Detector
- Carbon Monoxide Detector
- Driver and Passenger Three-Point Integrated Seatbelts (Lap and Shoulder)
- Third Brake Safety Light
- Egress Windows (1 in Bedroom, 1 in Living Area)



## PLUMBING AND LP SYSTEMS

- › Demand Water System and Water Pump
- › 10-Gallon LP Gas/Electric Water Heater with Electronic Ignition
- › Single Lever Satin Nickel Kitchen Faucet with Pullout Sprayer
- › Central Water Filtration System
- › Single Handle Satin Nickel Bath Faucet
- › Single Handle Satin Nickel Shower Faucet with Slide Bar and Shut-Off Valve at Shower Head
- › Exterior Tank Monitoring Gauges
- › Water Heater Bypass Valve
- › Water Pump Switch in Convenience Center, Service Bay and Bath
- › China Toilet (40PDQ, 42PDQ, 42DSQ, 42KFQ)
- › China Toilet Electronic Silent Plus (36PDQ, 42DSQ)
- › Shower inside Wet Bay with Hot/Cold Water
- › No-Fuss Flush Holding Tank Rinsing System
- › Gravity and Pressurized Water Fill
- › Insulated Systems Compartment with Easy Access to Hook-Up
- › Sewer Hose Storage (Deleted When RV Sani-Con Tank Drainage System Is Selected)
- › One-Piece Round Shower with Reeded Glass Door (40PDQ, 42PDQ)
- › One-Piece Rectangular Shower with Obscured Glass Door (36PDQ)
- › One-Piece Neo-Angled Shower with Obscured Glass Door (42KFQ)
- › One-Piece Pear-Shaped Tub with Obscured Glass Door (42DSQ)
- › Satin Nickel Shower Door Frame with Decorative Glass

### OPTIONS

- › Power Water Hose Reel
- › RV Sani-Con Tank Drainage System
- › Electric Automatic Winterization
- › Neo-Angled Bathtub (N/A: 36PDQ, 42DSQ)

## HEATING, VENTS AND AIR CONDITIONING

- › Dual 13.5M BTU Roof Air Conditioners with Ducted Air, Heat Pumps and Digital Thermostat Control (36PDQ, 40PDQ)
- › Three 13.5M BTU Roof Air Conditioners with Wall Thermostat and Heat Pump (42PDQ, 42DSQ, 42KFQ)
- › 51M BTU (31M and 20M) Dual Zone Electronic Ignition Furnaces
- › Electronic AC/Heat Climate Control System
- › In-Floor Ducted Heating System
- › 12V Attic Fan in Kitchen, Hall Bath and Private Bath
- › 12V Heater in Wet Bay
- › Aqua-Hot® 450 Water and Heating System (Engine Preheat Included)
- › Ceiling Fan in Bedroom (N/A: 36PDQ)
- › Dual 15M BTU Roof Air Conditioner with Ducted Air, Heat Pumps and Digital Thermostat Control (36PDQ, 40PDQ)
- › Two 15M BTU Roof Air Conditioners and One 13.5M BTU Roof Air Conditioner with Wall Thermostats and Heat Pumps (42PDQ, 42DSQ, 42KFQ)

### OPTIONS



## WINDOWS, DOORS AND AWNINGS

- › Radius Flush-Mounted Dual Pane Safety Glass Dark Tinted Slider Windows
- › Front Entry Door with Removable Screen and Anti-Skid Steps
- › Keyless Entry in Grab Handle with Baggage Door Lock Release and Doorbell
- › Metal Interior Grab Handle at Entry Door and on Dash across from Passenger Seat
- › Eclipse Automatic Patio Awning
- › Automatic Front Door Awning
- › Topper Slide-Out Awnings Living Area and Bedroom with Metal Covers
- › Window Awnings on All Windows except Slide-Out Windows under Patio Awning
- › Tinted Skylight in Bathroom with Protecta Glaze
- › Apex Automatic Patio Awning with Remote

### OPTIONS



## SAFETY

- › Fire Extinguisher
- › Deadbolt Lock on Entrance Door
- › 120V GFI Protected Circuit (Kitchen, Bath and Exterior)
- › LP Gas Detector
- › Smoke Detector
- › Carbon Monoxide Detector
- › Driver and Passenger Three-Point Integrated Seatbelts (Lap and Shoulder)
- › Third Brake Safety Light
- › Egress Windows (1 in Bedroom, 1 in Living Area)



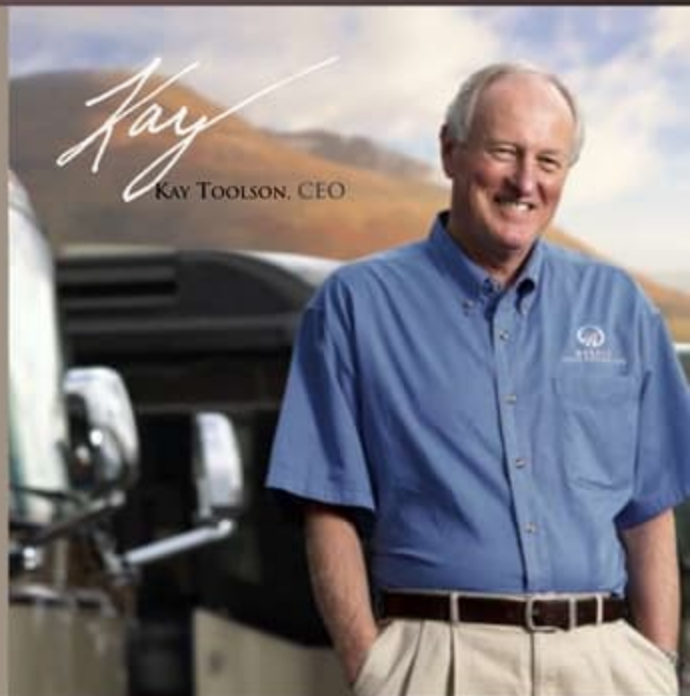
08

CAMELOT™

## BEING DIFFERENT MAKES ALL THE DIFFERENCE.

At Monaco, we always strive to be the best. And that means thinking outside the box. Giving you more of what you want in an RV. Like our exclusive Roadmaster chassis. Three factory-owned service centers. And programs like Monaco Financial Services and 24/7 roadside assistance. No other manufacturer can match Monaco's offerings. No one even comes close. Why not discover the difference for yourself? Go Monaco.

*"No other manufacturer can match  
Monaco's offerings. No one even comes close."*



[www.monacodifferent.com](http://www.monacodifferent.com) | 877-252-4666

DEALER:



MONACO™

DRIVING YOUR DREAM.

91320 Coburg Industrial Way, Coburg, OR 97408 | 800 634-0855

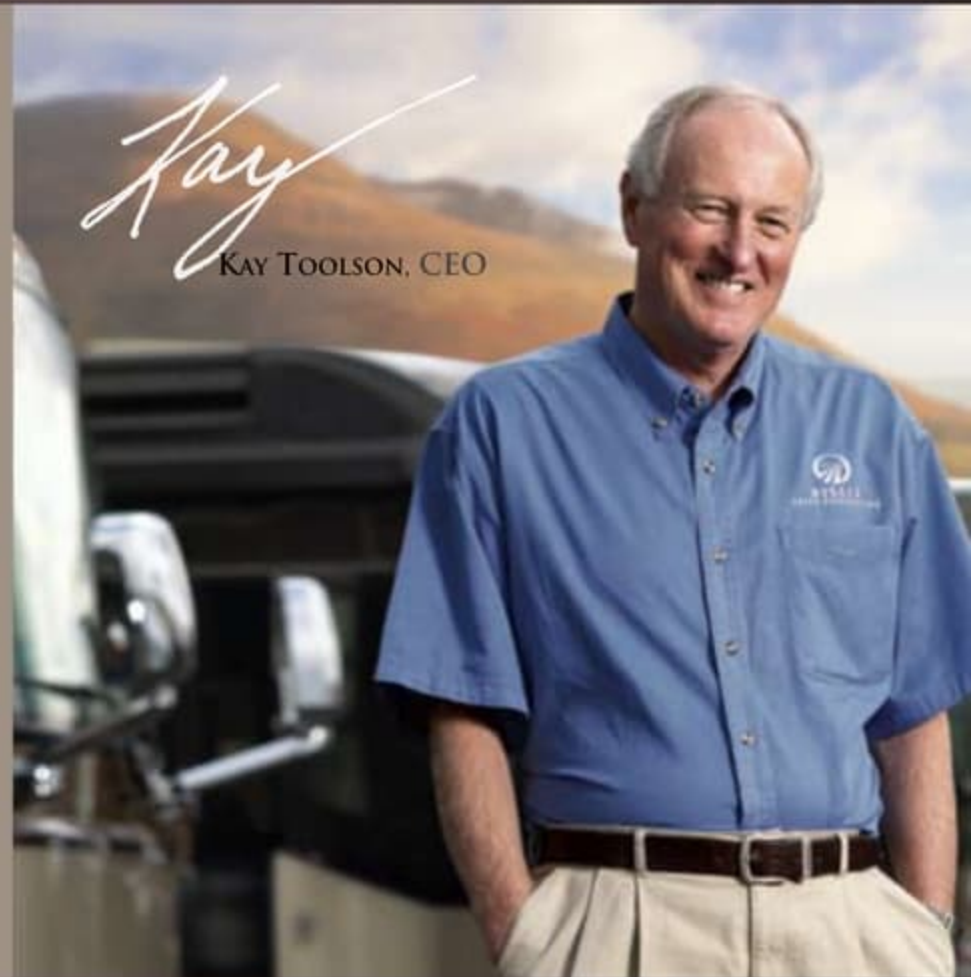
[www.monacocoach.com](http://www.monacocoach.com)

Monaco Coach Corporation is traded on the NYSE under the listing MNC. | 1007 NPB: BROMCAM

## BEING DIFFERENT MAKES ALL THE DIFFERENCE.

At Monaco, we always strive to be the best. And that means thinking outside the box. Giving you more of what you want in an RV. Like our exclusive Roadmaster chassis. Three factory-owned service centers. And programs like Monaco Financial Services and 24/7 roadside assistance. No other manufacturer can match Monaco's offerings. No one even comes close. Why not discover the difference for yourself? Go Monaco.

**“No other manufacturer can match Monaco's offerings. No one even comes close.”**



[www.monacodifferent.com](http://www.monacodifferent.com) | 877-252-4666

DEALER:



MONACO®

DRIVING YOUR DREAM.

91320 Coburg Industrial Way, Coburg, OR 97408 | 800 634-0855

[www.monacocoach.com](http://www.monacocoach.com)