



MONACO®

DRIVING YOUR DREAM.

DYNASTY®

 | 08





MONACO

DRIVING YOUR DREAM.

DYNASTY

 | 08



DYNASTY®



LUXURY. INNOVATION. HAPPY TRAVELERS. IT ALL SAYS MONACO.

Wherever you travel across America, it's easy to spot the Monaco owners. They're the ones with the smug, happy grins on their faces. And who could blame them? When you own a Monaco, you own the best. The best in luxury, performance, safety, technology and comfort. It's all here. And it's all yours for the taking. Come on, freedom lovers. Make your move to Monaco luxury. After all, you already know how to grin.

DYNASTY®



LUXURY. INNOVATION. HAPPY TRAVELERS. IT ALL SAYS MONACO.

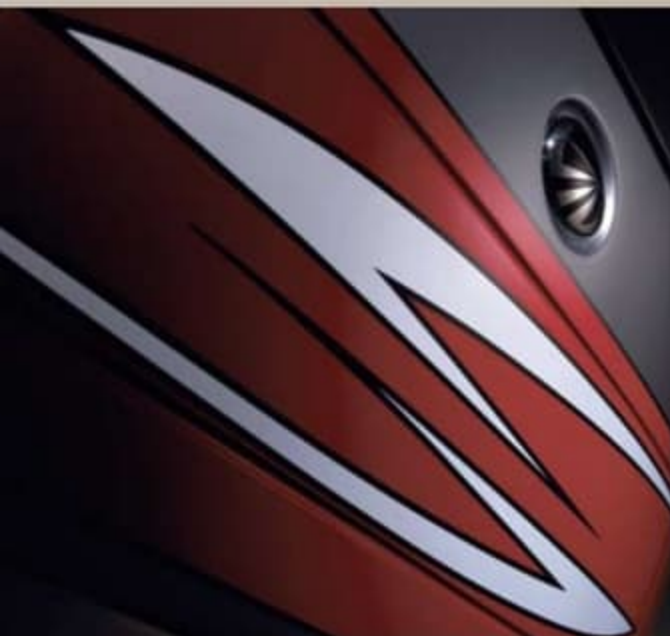
Wherever you travel across America, it's easy to spot the Monaco owners. They're the ones with the smug, happy grins on their faces. And who could blame them? When you own a Monaco, you own the best. The best in luxury, performance, safety, technology and comfort. It's all here. And it's all yours for the taking. Come on, freedom lovers. Make your move to Monaco luxury. After all, you already know how to grin.



MONACO®

DRIVING YOUR DREAM.

SMART, FRESH DESIGN.



DYNASTY DISCOVERIES.

Looking for adventure? You can start by discovering all the great new features on the 2008 Dynasty. Here are just a few of the highlights:

- New Cummins® ISL 425 HP engine
- 500 HP engine standard on Yorkshire IV and Stafford IV
- New five-color exterior graphics with integrated fades
- New 32" LCD TV in living room
- New high-gloss Corian® countertops
- New quad slide bath-and-a-half floorplan (Renaissance IV and Yorkshire IV)



SMART, FRESH DESIGN.



MONACO®

DRIVING YOUR DREAM.



DYNASTY DISCOVERIES.

Looking for adventure? You can start by discovering all the great new features on the 2008 Dynasty. Here are just a few of the highlights:

- New Cummins® ISL 425 HP engine
- 500 HP engine standard on Yorkshire IV and Stafford IV
- New five-color exterior graphics with integrated fades
- New 32" LCD TV in living room
- New high-gloss Corian® countertops
- New quad slide bath-and-a-half floorplan (Renaissance IV and Yorkshire IV)



COAST-TO-COAST COMFORT.



COAST-TO-COAST COMFORT.



SQUIRE IV | NATURAL CHERRY | OPTIONAL MAHOGANY WOOD ENTERTAINMENT CABINET | MOONLIGHT SONATA II

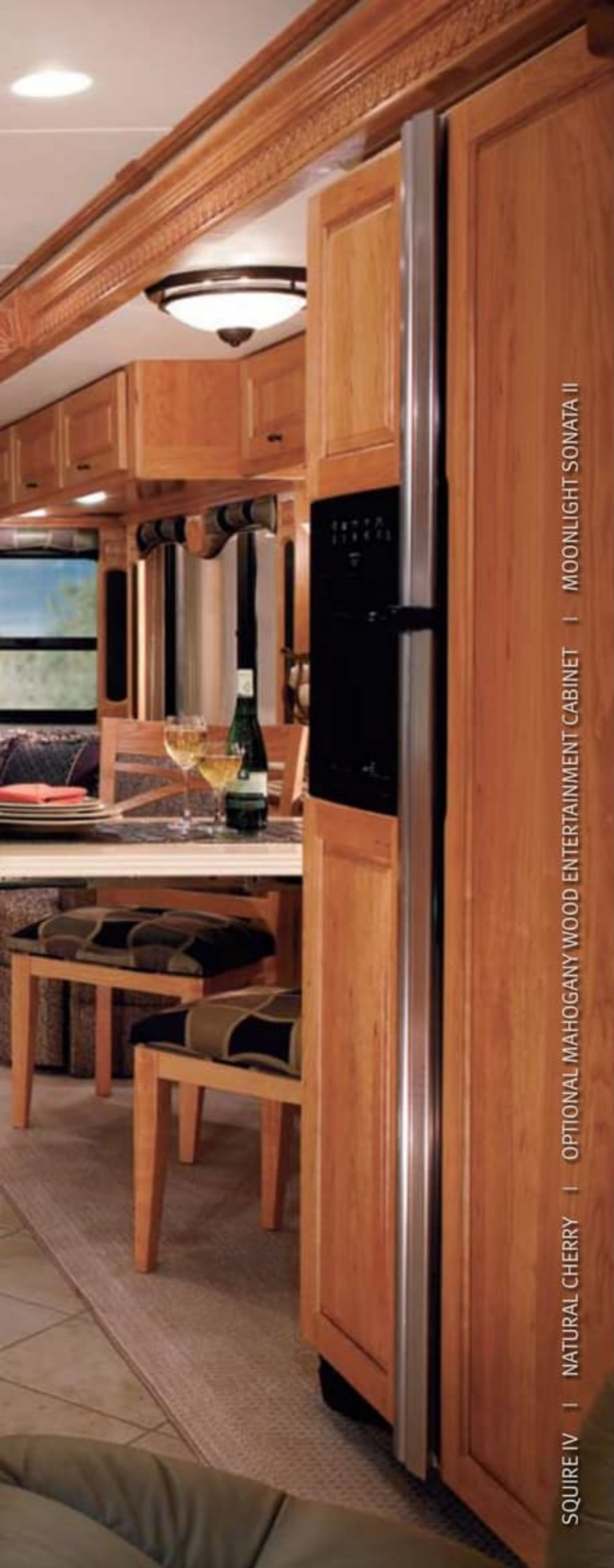
No matter how far away your destination, you're going to love getting there in a 2008 Dynasty. Step inside. There's something to delight you across every inch of this warm, inviting coach. Rich hardwoods. Ceramic tile floors. New high-gloss Corian® surfaces. Even the ceiling is a work of art with its padded, recessed panels.

This year, you can choose from nine thoughtfully designed floorplans, including a bath-and-a-half model and the front-kitchen Squire IV shown here. It comes with a gigantic 46" LCD TV that's just perfect for all-day movie marathons or your favorite sporting events. Who needs to go outside anyway?

CENTRAL VACUUM SYSTEM. For easy cleaning, this ingenious option offers handy plug-ins throughout the coach. All you do is attach the hose and sweep. Now why can't they make houses like this?

KITCHEN. When you're hungry, the kitchen is always open. This well-equipped galley comes with a big four-door refrigerator, roomy food pantry, and exquisite Corian® counters with three-tiered edge detailing. Need more prep space? You'll also find a Corian® cutting board and flush-mounted covers for the sink and cooktop — all housed in their own built-in storage areas.





SQUIRE IV | NATURAL CHERRY | OPTIONAL MAHOGANY WOOD ENTERTAINMENT CABINET | MOONLIGHT SONATA II

No matter how far away your destination, you're going to love getting there in a 2008 Dynasty. Step inside. There's something to delight you across every inch of this warm, inviting coach. Rich hardwoods. Ceramic tile floors. New high-gloss Corian® surfaces. Even the ceiling is a work of art with its padded, recessed panels.

This year, you can choose from nine thoughtfully designed floorplans, including a bath-and-a-half model and the front-kitchen Squire IV shown here. It comes with a gigantic 46" LCD TV that's just perfect for all-day movie marathons or your favorite sporting events. Who needs to go outside anyway?

CENTRAL VACUUM SYSTEM. For easy cleaning, this ingenious option offers handy plug-ins throughout the coach. All you do is attach the hose and sweep. Now why can't they make houses like this?

KITCHEN. When you're hungry, the kitchen is always open. This well-equipped galley comes with a big four-door refrigerator, roomy food pantry, and exquisite Corian® counters with three-tiered edge detailing. Need more prep space? You'll also find a Corian® cutting board and flush-mounted covers for the sink and cooktop — all housed in their own built-in storage areas.





THE ULTIMATE REST STOP.



THE ULTIMATE REST STOP.



SQUIRE IV | NATURAL CHERRY | MOONLIGHT SONATA II

Even though you love to drive, it's still nice to fold up the roadmaps, kick off your shoes, and retire to a comfortable bedroom at the end of the day. This one, on the Squire IV, is especially rewarding. Along with the luxurious queen bed, 20" LCD television, DVD player, and other niceties, it comes with a bonus integrated sink and mirror. No more waiting to brush your teeth!

Other standard features include nightstands with Corian® tops, day/night shades with blackouts (for a more restful night's sleep), designer carpeting, and light switches on both sides of the bed. A ceiling fan makes an excellent option for those who prefer a light breeze while they sleep.

BATHROOM. Upscale touches continue in the bathroom with its integrated sink, scored Corian® backsplash, oil-rubbed bronze hardware, and large Granicoat shower with clear glass door. And while you're busy admiring, don't miss the large private bathroom at the rear of the Renaissance IV.

MORE IN STORE. The Dynasty gives you plenty of storage space for clothes, bedding, and what-have-you. You'll find a large wardrobe with shoe rack, two dressers (one with a clothes hamper), and roomy overheads above the bed.





SQUIRE IV | NATURAL CHERRY | MOONLIGHT SONATA II

Even though you love to drive, it's still nice to fold up the roadmaps, kick off your shoes, and retire to a comfortable bedroom at the end of the day. This one, on the Squire IV, is especially rewarding. Along with the luxurious queen bed, 20" LCD television, DVD player, and other niceties, it comes with a bonus integrated sink and mirror. No more waiting to brush your teeth!

Other standard features include nightstands with Corian® tops, day/night shades with blackouts (for a more restful night's sleep), designer carpeting, and light switches on both sides of the bed. A ceiling fan makes an excellent option for those who prefer a light breeze while they sleep.

BATHROOM. Upscale touches continue in the bathroom with its integrated sink, scored Corian® backsplash, oil-rubbed bronze hardware, and large Granicoat shower with clear glass door. And while you're busy admiring, don't miss the large private bathroom at the rear of the Renaissance IV.

MORE IN STORE. The Dynasty gives you plenty of storage space for clothes, bedding, and what-have-you. You'll find a large wardrobe with shoe rack, two dressers (one with a clothes hamper), and roomy overheads above the bed.



Drive away in a 2008 Dynasty, and let the whole world know who's boss. It's you, the lucky guy with the big Cummins® engine roaring down the highway. This year, to give you even more road-taming power, we've beefed up the Dynasty's engine package from 400 to 425 HP.

We've also insisted on a cockpit full of driver-friendly systems. Like adjustable brake and accelerator pedals. A lighted VIP Smartwheel® that puts your most-used switches right on the steering wheel. And because we know you like tunes for the road, we've also included a CD player and a new auxiliary audio input for your portable music player.

SLIDE-OUT TRAY. Need a reprieve from back-twisting loading? We hear you. That's why we've made our popular slide-out tray a standard feature this year. It's housed in a complete pass-through storage compartment for easy access from either side of the coach.

COCKPIT. When you're done driving, just spin the captain's chairs and say hello to two very comfortable recliners. Both feature six-way power with electric lumbar support. And to keep you entertained, there's a 32" LCD television in the cockpit overhead on most coaches — plus a home theater system with DVD/CD player.

KEYLESS ENTRY. You'll never be locked out of your coach again, thanks to the Dynasty's keyless entry system. Just punch in a four-digit code that you choose yourself, or use the handy pocket remote.



Drive away in a 2008 Dynasty, and let the whole world know who's boss. It's you, the lucky guy with the big Cummins® engine roaring down the highway. This year, to give you even more road-taming power, we've beefed up the Dynasty's engine package from 400 to 425 HP.

We've also insisted on a cockpit full of driver-friendly systems. Like adjustable brake and accelerator pedals. A lighted VIP Smartwheel® that puts your most-used switches right on the steering wheel. And because we know you like tunes for the road, we've also included a CD player and a new auxiliary audio input for your portable music player.

SLIDE-OUT TRAY. Need a reprieve from back-twisting loading? We hear you. That's why we've made our popular slide-out tray a standard feature this year. It's housed in a complete pass-through storage compartment for easy access from either side of the coach.

COCKPIT. When you're done driving, just spin the captain's chairs and say hello to two very comfortable recliners. Both feature six-way power with electric lumbar support. And to keep you entertained, there's a 32" LCD television in the cockpit overhead on most coaches — plus a home theater system with DVD/CD player.

KEYLESS ENTRY. You'll never be locked out of your coach again, thanks to the Dynasty's keyless entry system. Just punch in a four-digit code that you choose yourself, or use the handy pocket remote.



DYNASTY®
COCKPIT/EXTERIOR



SQUIRE IV | NATURAL CHERRY | MOONLIGHT SONATA II

SEND A POWERFUL STATEMENT.

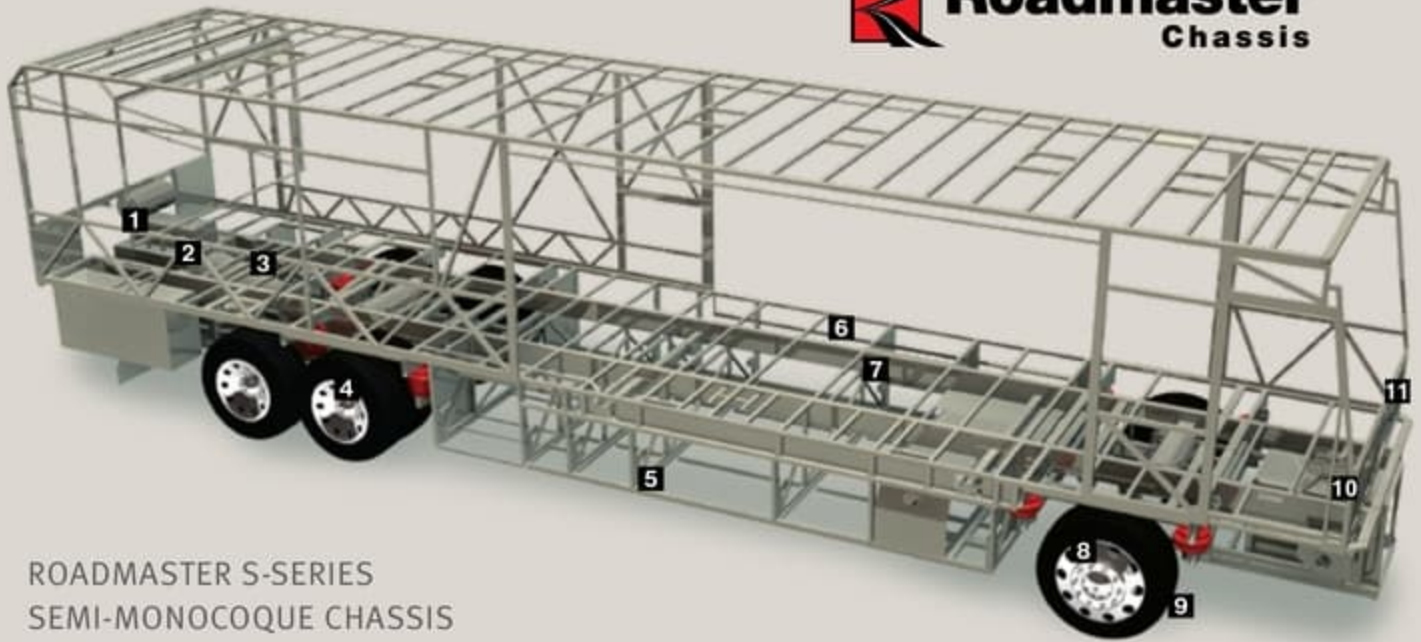
DYNASTY®
COCKPIT/EXTERIOR



SQUIRE IV | NATURAL CHERRY | MOONLIGHT SONATA II



SEND A POWERFUL STATEMENT.



ROADMASTER S-SERIES SEMI-MONOCOQUE CHASSIS

1 10,000 lb. hitch receiver offers powerful towing capacity with 7/4-way trailer plug. Pre-wired for supplemental braking system that works with your tow vehicle.

2 The three-point engine mounting system lowers the coach's center of gravity and reduces the amount of vibration that reaches the coach. The mounting also makes the engine easier to service by allowing the engine to be easily lowered through the bottom of the coach.

3 Allison® 3000 MH 6-speed transmission for smooth shifting; our exclusive use of synthetic transmission fluid allows for up to three-year maintenance intervals.

4 Cushion Air Glide suspension system positions ten Bilstein® shocks and ten air bags, eight of which are outboard mounted with auto-leveling for greater stability, a smoother ride and the best handling in its class.



Unique three-degree rear axle tilt perfectly aligns the engine, transmission and differential, minimizing stress on the drivetrain and reducing noise in the coach.

Automatic Traction Control (ATC) eliminates wheel slippage in slick conditions and heightens control.

Tag axle lifts for added maneuverability in tight spots.

5 Basement structure rust inhibitor. To prevent corrosion, the basement storage area is constructed with pre-primed steel with rust-inhibiting paint.

6 Full-length frame rails fabricated from 3" by 8" by 1/4" 60,000 PSI structural steel; rails are spaced 44" on center for a wider stance and unmatched strength.

7 The semi-monocoque design, with trussed superstructure, distributes stress evenly throughout the entire chassis and adds strength to sidewalls and bays.

8 Two-stage Jake brake system assures you of safely traveling steep grades while 6-wheel anti-lock brakes with disc brakes in front help you maintain control in severe road conditions.

9 P295/80R/22.5 Goodyear steel-belted all-season tires ensure a safe and quiet ride (G670 RV tire).

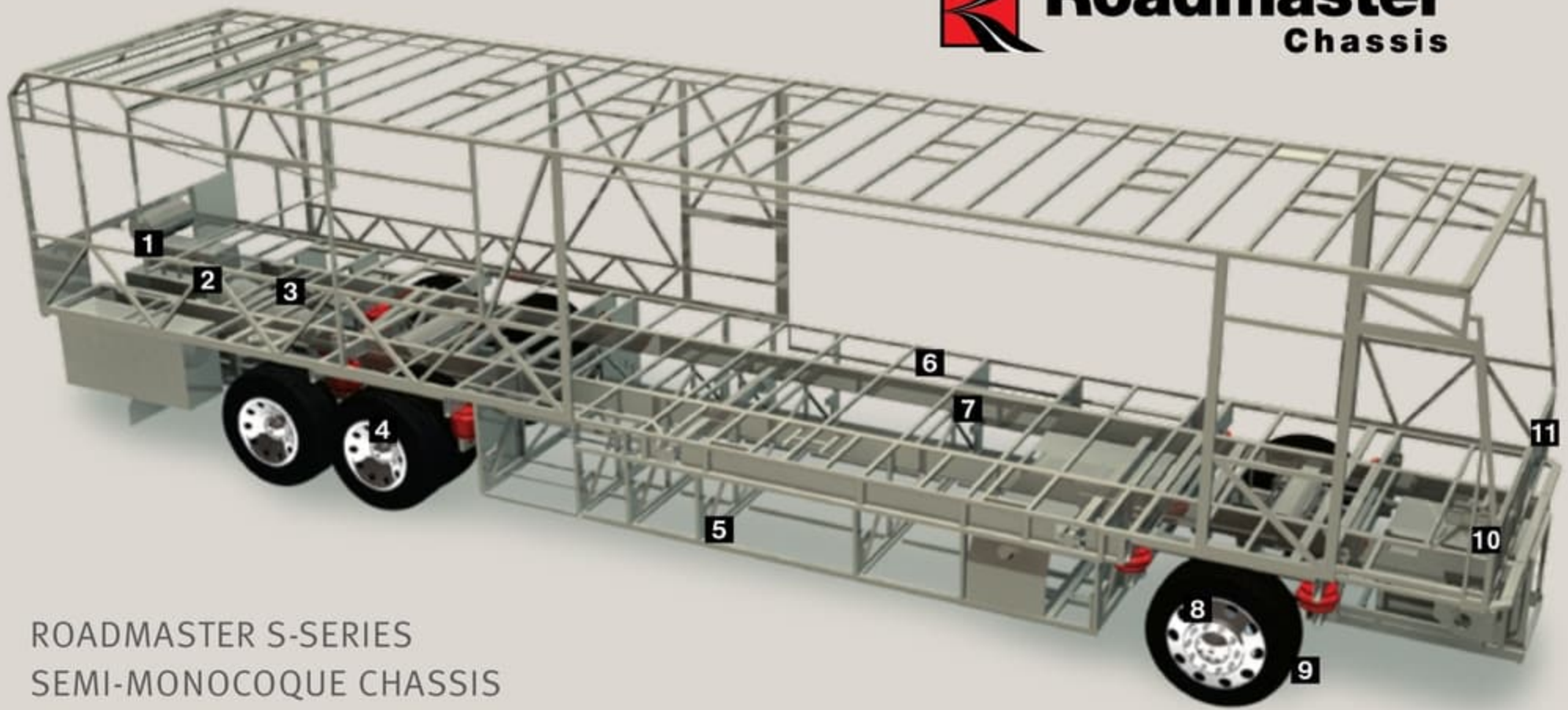
10 The TRW power steering box allows for a 50-degree front wheel turn angle in both directions for better maneuverability and returns the steering wheel to its center position to eliminate driver fatigue.

11 All chassis are equipped with steel cage construction, steel firewall and steel stepwell for added safety.

MAY WE BUILD YOU A CHASSIS?

Did you know that every Roadmaster chassis is custom designed and built for the Monaco coach that will ride on it? It's a novel idea, but our owners seem to like it. And it pays off — in better performance, safety and reliability. Owners also like the fact that Roadmaster, a division of

Monaco Coach Corporation, only does one thing: They build chassis for motorhomes. Not trucks. Not buses. Just motorhomes. So naturally, they do it better. No wonder Roadmaster is the leading high-end diesel chassis manufacturer in America.



ROADMASTER S-SERIES SEMI-MONOCOQUE CHASSIS

1 10,000 lb. hitch receiver offers powerful towing capacity with 7/4-way trailer plug. Pre-wired for supplemental braking system that works with your tow vehicle.

2 The three-point engine mounting system lowers the coach's center of gravity and reduces the amount of vibration that reaches the coach. The mounting also makes the engine easier to service by allowing the engine to be easily lowered through the bottom of the coach.

3 Allison® 3000 MH 6-speed transmission for smooth shifting; our exclusive use of synthetic transmission fluid allows for up to three-year maintenance intervals.

4 Cushion Air Glide suspension system positions ten Bilstein® shocks and ten air bags, eight of which are outboard mounted with auto-leveling for greater stability, a smoother ride and the best handling in its class.



Unique three-degree rear axle tilt perfectly aligns the engine, transmission and differential, minimizing stress on the drivetrain and reducing noise in the coach. Automatic Traction Control (ATC) eliminates wheel slippage in slick conditions and heightens control.

Tag axle lifts for added maneuverability in tight spots.

5 Basement structure rust inhibitor. To prevent corrosion, the basement storage area is constructed with pre-primed steel with rust-inhibiting paint.

6 Full-length frame rails fabricated from 3" by 8" by 1/4" 60,000 PSI structural steel; rails are spaced 44" on center for a wider stance and unmatched strength.

7 The semi-monocoque design, with trussed superstructure, distributes stress evenly throughout the entire chassis and adds strength to sidewalls and bays.

8 Two-stage Jake brake system assures you of safely traveling steep grades while 6-wheel anti-lock brakes with disc brakes in front help you maintain control in severe road conditions.

9 P295/80R/22.5 Goodyear steel-belted all-season tires ensure a safe and quiet ride (G670 RV tire).

10 The TRW power steering box allows for a 50-degree front wheel turn angle in both directions for better maneuverability and returns the steering wheel to its center position to eliminate driver fatigue.

11 All chassis are equipped with steel cage construction, steel firewall and steel stepwell for added safety.

MAY WE BUILD YOU A CHASSIS?

Did you know that every Roadmaster chassis is custom designed and built for the Monaco coach that will ride on it? It's a novel idea, but our owners seem to like it. And it pays off — in better performance, safety and reliability. Owners also like the fact that Roadmaster, a division of

Monaco Coach Corporation, only does one thing: They build chassis for motorhomes. Not trucks. Not buses. Just motorhomes. So naturally, they do it better. No wonder Roadmaster is the leading high-end diesel chassis manufacturer in America.

OUTBOARD AIR BAG SUSPENSION

The outboard-mounted air bags are protected by two steel plates and are placed farther apart than the competition, providing a wider and more stable platform for the coach. The active suspension automatically adjusts the pressure of the air bags as you drive and virtually eliminates nosediving and the side-to-side body sway associated with high wind conditions, curvy roads and emergency maneuvers.



CUMMINS® ISL 425 HP

This year, we've equipped the Dynasty with a gutsy new Cummins® ISL 425 HP engine for added power and unbeatable torque at the RPM where you need it most. Want even more muscle? Our new 45-foot floorplans feature a big 500 HP engine with Allison® 4000 series transmission.



WARRANTIES

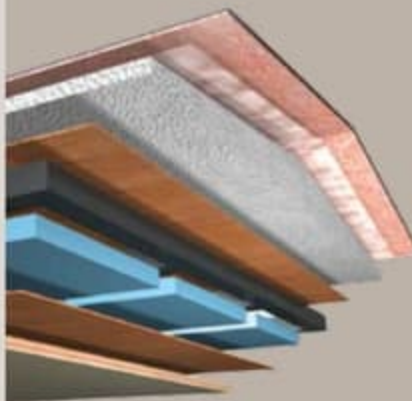
12 MONTH/24,000 MILE basic limited warranty

5 YEAR/50,000 MILE limited warranty on aluminum or steel frame structure of sidewall, roof, front and rear cap

3 YEAR/50,000 MILE limited warranty on Roadmaster chassis

Applies to certain models. See owner's manual for complete details.

DYNASTY® CONSTRUCTION



8-LAYER ALL-SEASON FOAM INSULATED ROOF:

(top to bottom)

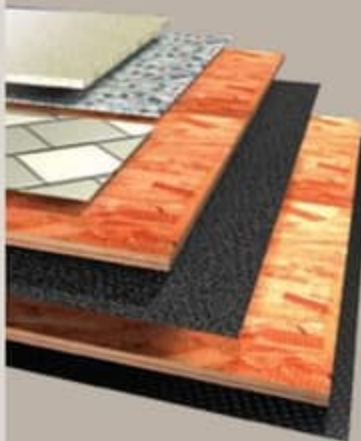
- One-piece 1/4" thick fiberglass roof, crowned for water runoff and seamlessly joined with front and rear end caps; non-skid walkways on outboard areas for added convenience
- Vapor barrier
- 3-1/2" tapered bead foam supports the crowned roof; the center tunnel houses wiring and air conditioner ducts
- 1/4" marine grade plywood sheeting
- Tubular steel framework
- R 7.5 closed cel foam seals every nook and crevice
- Luaun and vinyl paneling are Vac-U-Bonded
- Sound-absorbing, easy-to-clean padded vinyl interior headliner



6-LAYER LAMINATED GEL COAT FIBERGLASS SIDEWALLS:

(left to right)

- Gel coat fiberglass outer wall
- Luaun paneling
- R 7.5 closed cel foam seals every nook and crevice
- Heavy-gauge tubular steel and 4" steel plate backers
- Luaun paneling; walls are Vac-U-Bonded together
- Decorative wall coverings



5-LAYER FLOORING:

(top to bottom)

- Tile, or 1/2" carpet pad and carpeting
- OSB flooring
- Decibel paper
- OSB flooring
- Waterproof Darco underbelly



ASSISTANCE

SALES • TECH • ROADSIDE

1-877-4MONACO

WE'RE HERE. ANYTIME, EVERY TIME.

- Reach us anytime — literally — via our live customer support line.
- Drive in to one of our 350 Service Centers.
- Enjoy the first year free when you enroll in our Owner Advantage Roadside Assistance Program.
- See where it all begins with a tour of one of our facilities in Indiana or Oregon. Call 1-800-650-7337 or 1-800-634-0855 to find out more.

OUTBOARD AIR BAG SUSPENSION

The outboard-mounted air bags are protected by two steel plates and are placed farther apart than the competition, providing a wider and more stable platform for the coach. The active suspension automatically adjusts the pressure of the air bags as you drive and virtually eliminates nosediving and the side-to-side body sway associated with high wind conditions, curvy roads and emergency maneuvers.



CUMMINS® ISL 425 HP

This year, we've equipped the Dynasty with a gutsy new Cummins® ISL 425 HP engine for added power and unbeatable torque at the RPM where you need it most. Want even more muscle? Our new 45-foot floorplans feature a big 500 HP engine with Allison® 4000 series transmission.



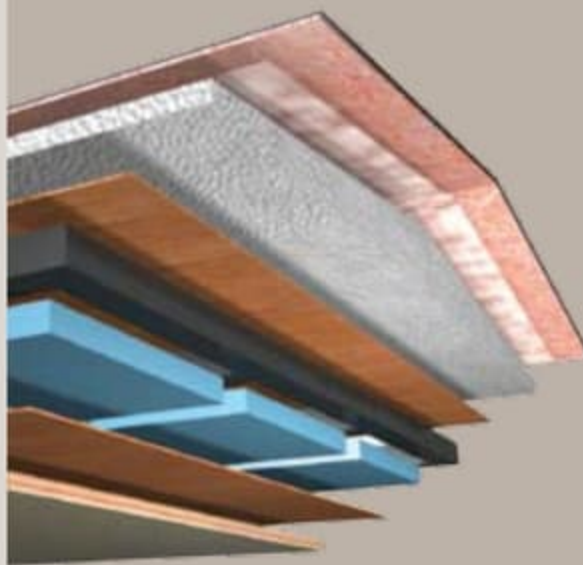
WARRANTIES

12 MONTH/24,000 MILE basic limited warranty

5 YEAR/50,000 MILE limited warranty on aluminum or steel frame structure of sidewall, roof, front and rear cap

3 YEAR/50,000 MILE limited warranty on Roadmaster chassis

Applies to certain models. See owner's manual for complete details.



8-LAYER ALL-SEASON FOAM INSULATED ROOF:

(top to bottom)

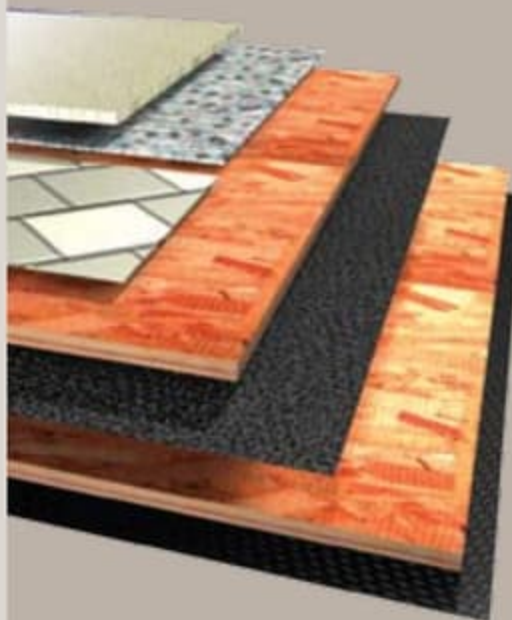
- One-piece 1/4" thick fiberglass roof, crowned for water runoff and seamlessly joined with front and rear end caps; non-skid walkways on outboard areas for added convenience
- Vapor barrier
- 3-1/2" tapered bead foam supports the crowned roof; the center tunnel houses wiring and air conditioner ducts
- 1/4" marine grade plywood sheeting
- Tubular steel framework
- R 7.5 closed cel foam seals every nook and crevice
- Luaun and vinyl paneling are Vac-U-Bonded
- Sound-absorbing, easy-to-clean padded vinyl interior headliner



6-LAYER LAMINATED GEL COAT FIBERGLASS SIDEWALLS:

(left to right)

- Gel coat fiberglass outer wall
- Luaun paneling
- R 7.5 closed cel foam seals every nook and crevice
- Heavy-gauge tubular steel and 4" steel plate backers
- Luaun paneling; walls are Vac-U-Bonded together
- Decorative wall coverings



5-LAYER FLOORING:

(top to bottom)

- Tile, or 1/2" carpet pad and carpeting
- OSB flooring
- Decibel paper
- OSB flooring
- Waterproof Darco underbelly



ASSISTANCE

SALES • TECH • ROADSIDE

1-877-4MONACO

WE'RE HERE. ANYTIME, EVERY TIME.

- Reach us anytime — literally — via our live customer support line.
- Drive in to one of our 350 Service Centers.
- Enjoy the first year free when you enroll in our Owner Advantage Roadside Assistance Program.
- See where it all begins with a tour of one of our facilities in Indiana or Oregon. Call 1-800-650-7337 or 1-800-634-0855 to find out more.



AUTUMN SUNBURST II



BAHAMA WIND



ISLAND PEARL

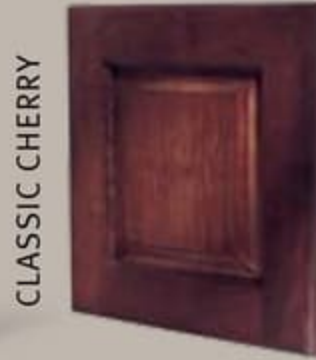


MOONLIGHT SONATA II



Carpet A
 Dinette B
 Sofa C
 Bedspread D

A	B	C	D
---	---	---	---



AUTUMN SUNBURST II



BAHAMA WIND



ISLAND PEARL



MOONLIGHT SONATA II



Carpet A
 Dinette B
 Sofa C
 Bedspread D

A	B	C	D



NATURAL MAPLE



SPICED MAPLE



WHICH WAY WILL YOU GO?

We know you love choices. That's why our designers give you so many tempting options. From mild to wild, discriminating to daring, Monaco offers lots of fun ways to go.

RALPH LAUREN BLACK PEARL



RALPH LAUREN LANDSDOWN II



RALPH LAUREN WINDERMERE



RALPH LAUREN PACKAGE:

Here's a feast for your senses. Our exclusive Ralph Lauren package offers upgraded features throughout the coach. Because we want your life on the road to be beautiful.

- Upgraded Ralph Lauren Fabrics, Both Living Room and Bedroom
- Upgraded Villa Furniture Featuring 2-Tone Ralph Lauren Fabric/Leather and Villa Dinette Chairs
- Upgraded Galley and Lavatory Faucets
- Upgraded Tumbled Stone Galley/Bath Backsplashes ILO Corian®
- Polished Porcelain 14" x 14" Floor Tile
- Upgraded Carpet
- Additional Decorative Pillows in Ralph Lauren Fabrics
- Decorative Lighting All in Oil Rubbed Bronze
- Detailed Decorative Carved Headboard
- Upgraded Carved Slide-Out Fascia
- Upgraded Oil Rubbed Bronze Knobs and Pulls, Wallpaper and Ceiling Treatments
- Raised Panel Cabinetry Throughout
- Black Microwave

Note: Colors depicted are a reasonable representation though they may not be an exact match of the actual colors due to variances in processing and production. See your dealer for actual fabric and paint chip samples.



NATURAL MAPLE



SPICED MAPLE



WHICH WAY WILL YOU GO?

We know you love choices. That's why our designers give you so many tempting options. From mild to wild, discriminating to daring, Monaco offers lots of fun ways to go.

RALPH LAUREN BLACK PEARL



RALPH LAUREN LANDSDOWN II



RALPH LAUREN WINDERMERE



RALPH LAUREN PACKAGE:

Here's a feast for your senses. Our exclusive Ralph Lauren package offers upgraded features throughout the coach. Because we want your life on the road to be beautiful.

- › Upgraded Ralph Lauren Fabrics, Both Living Room and Bedroom
- › Upgraded Villa Furniture Featuring 2-Tone Ralph Lauren Fabric/Leather and Villa Dinette Chairs
- › Upgraded Galley and Lavatory Faucets
- › Upgraded Tumbled Stone Galley/Bath Backsplashes ILO Corian®
- › Polished Porcelain 14" x 14" Floor Tile
- › Upgraded Carpet
- › Additional Decorative Pillows in Ralph Lauren Fabrics
- › Decorative Lighting All in Oil Rubbed Bronze
- › Detailed Decorative Carved Headboard
- › Upgraded Carved Slide-Out Fascia
- › Upgraded Oil Rubbed Bronze Knobs and Pulls, Wallpaper and Ceiling Treatments
- › Raised Panel Cabinetry Throughout
- › Black Microwave

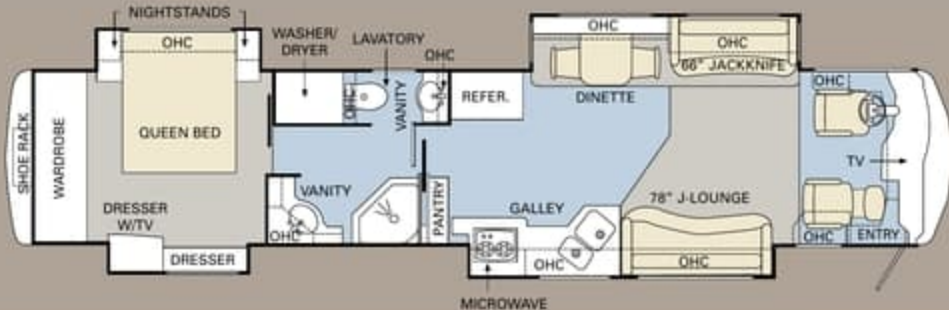
Note: Colors depicted are a reasonable representation though they may not be an exact match of the actual colors due to variances in processing and production. See your dealer for actual fabric and paint chip samples.



BEDFORD IV



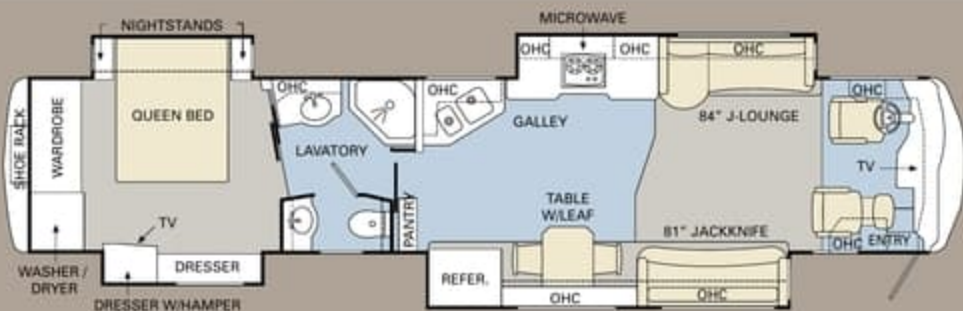
PLATINUM IV



DIAMOND IV



EMPEROR IV



NOTTINGHAM IV

Ready to choose? The 2008 Dynasty is available in ten large, livable floorplans from 40 to 45 feet, including front-kitchen and bath-and-a-half models. All floorplans come with quad slide-outs for the ultimate in spaciousness.

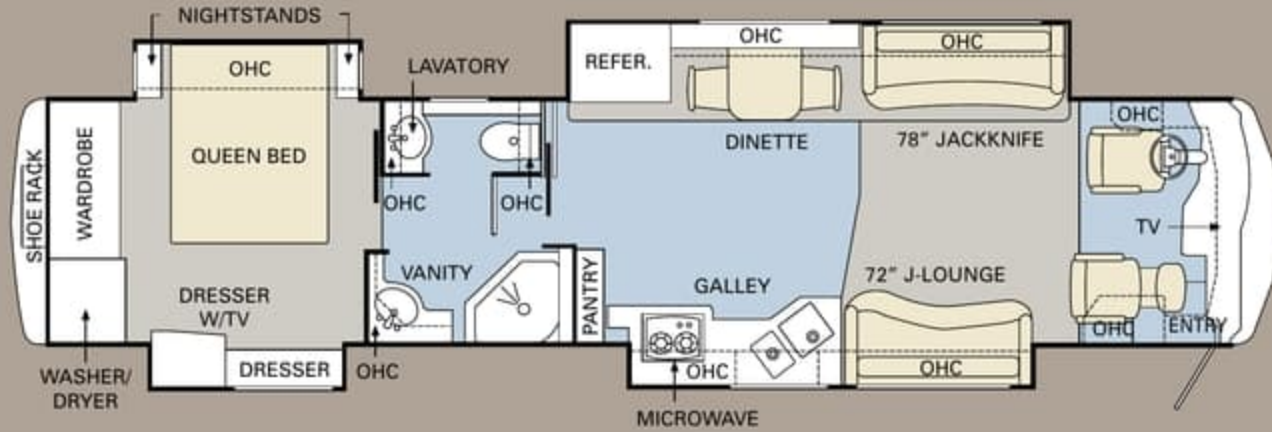
FURNITURE OPTIONS:

TILE CARPET

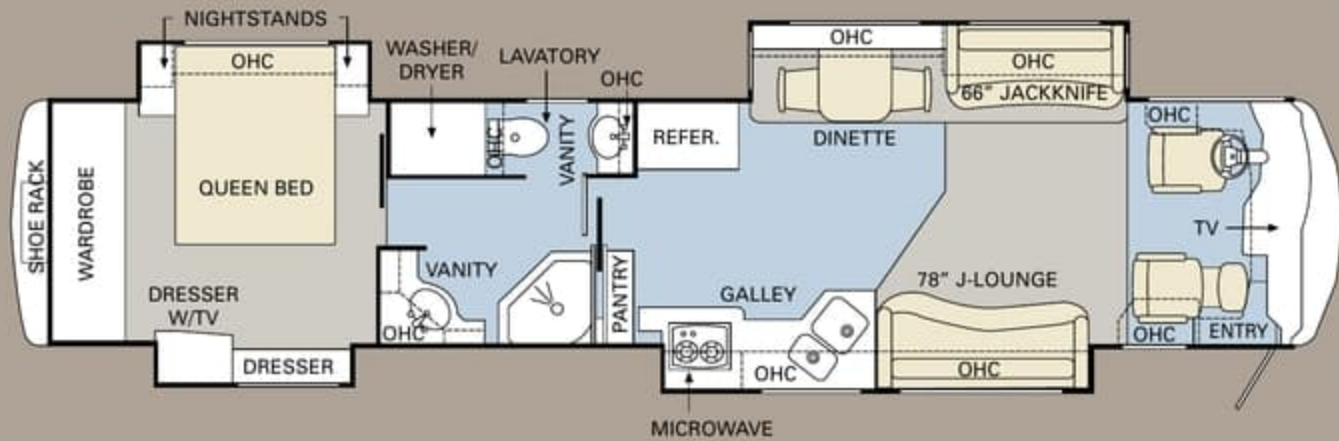




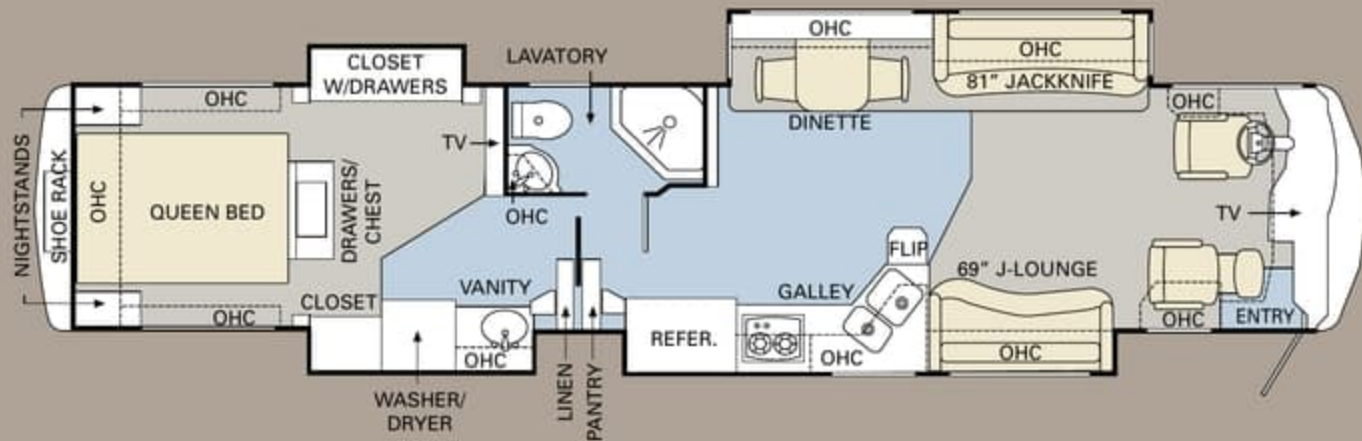
BEDFORD IV



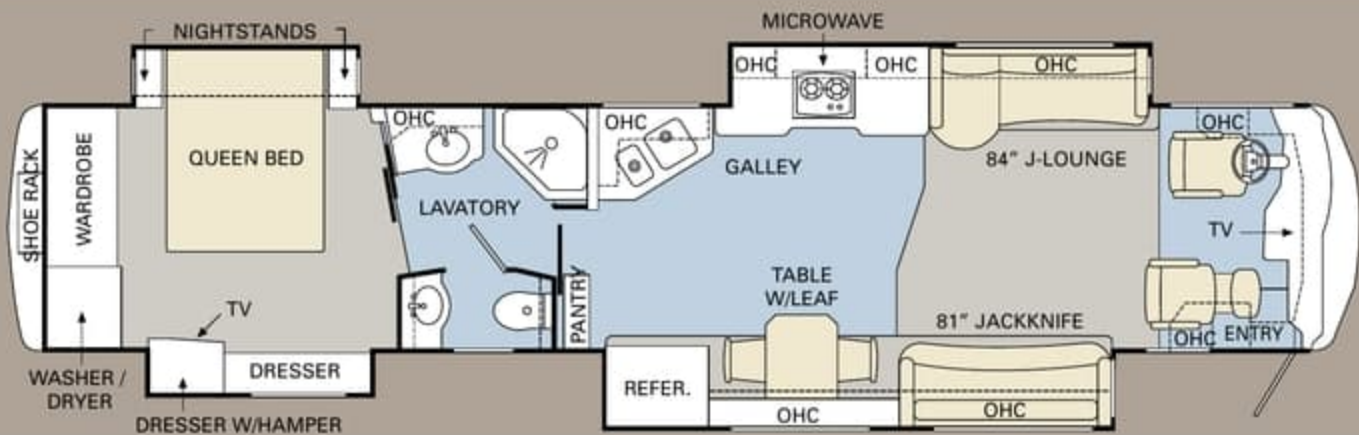
PLATINUM IV



DIAMOND IV



EMPEROR IV

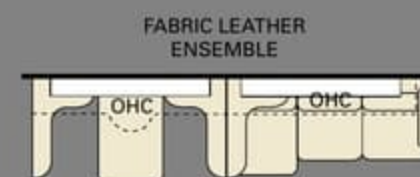
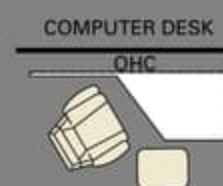


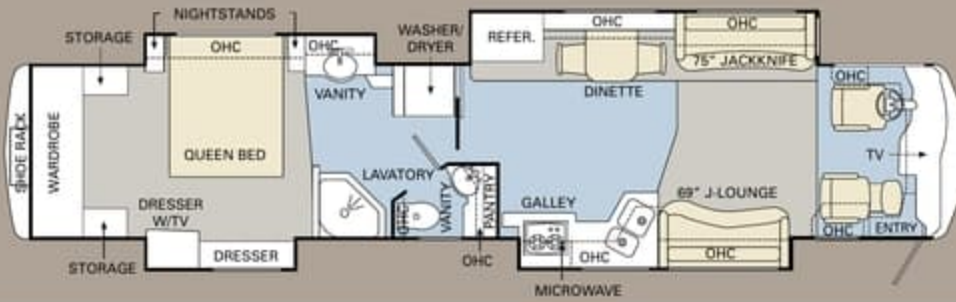
NOTTINGHAM IV

Ready to choose? The 2008 Dynasty is available in ten large, livable floorplans from 40 to 45 feet, including front-kitchen and bath-and-a-half models. All floorplans come with quad slide-outs for the ultimate in spaciousness.

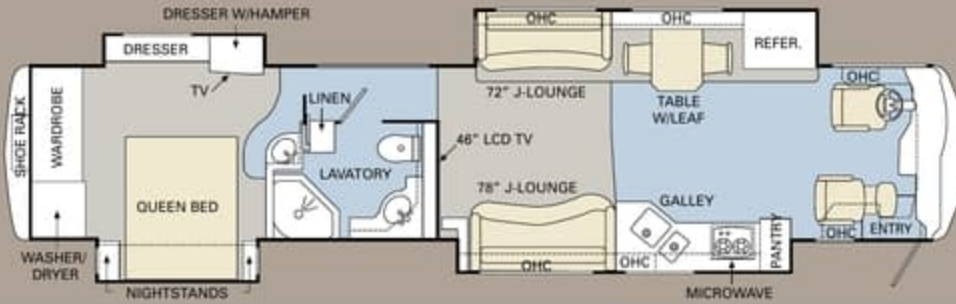
FURNITURE OPTIONS:

TILE CARPET





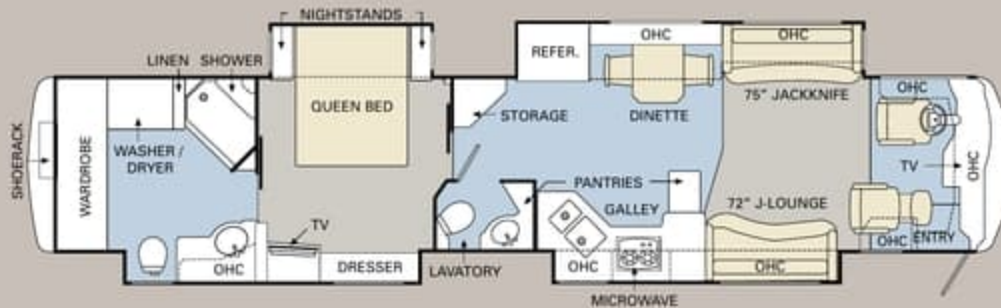
QUEEN IV



SQUIRE IV



RENAISSANCE IV



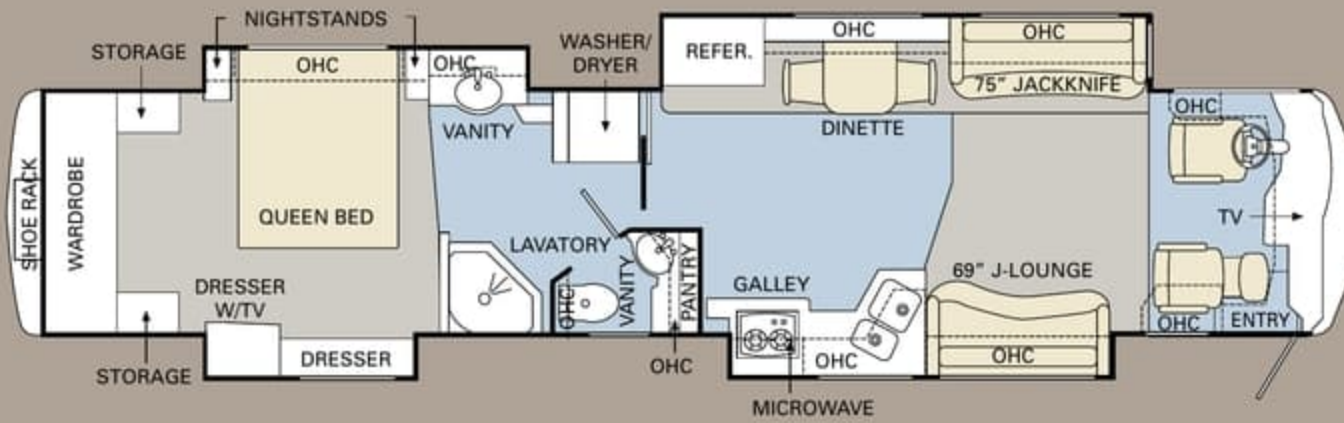
YORKSHIRE IV

This floorplan comes with a big 500 HP engine with Allison® 4000 series transmission.

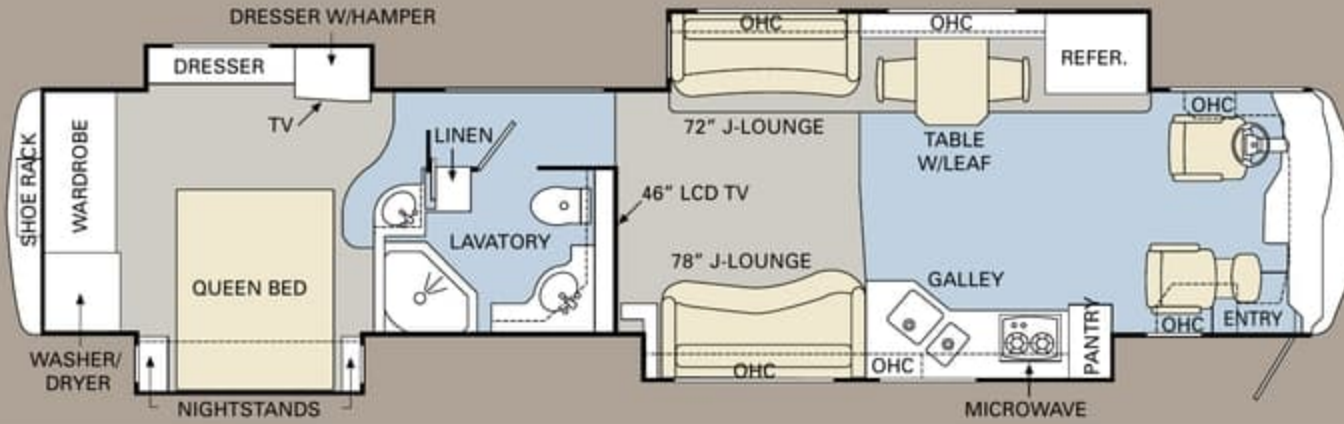


STAFFORD IV

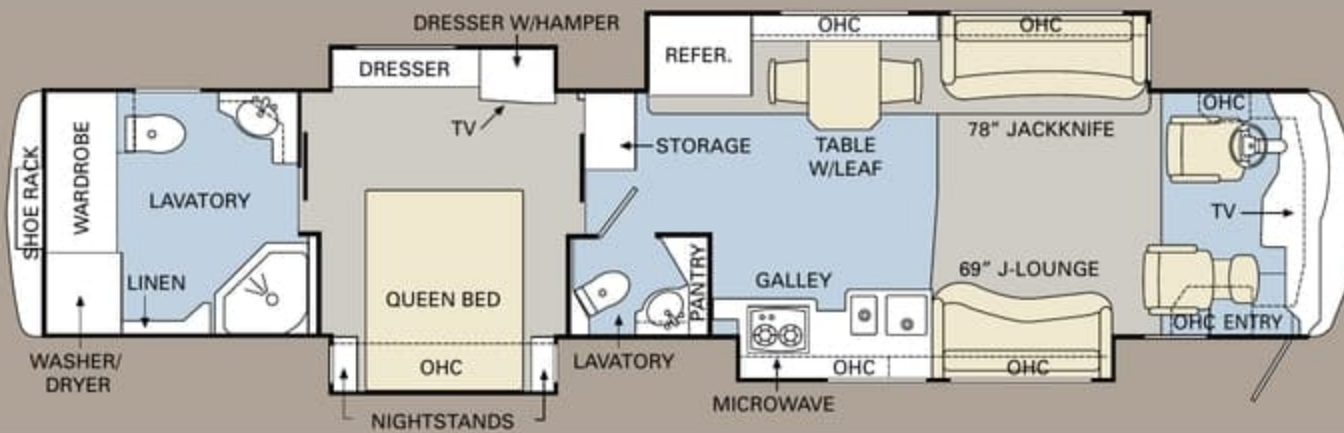
This floorplan comes with a big 500 HP engine with Allison® 4000 series transmission.



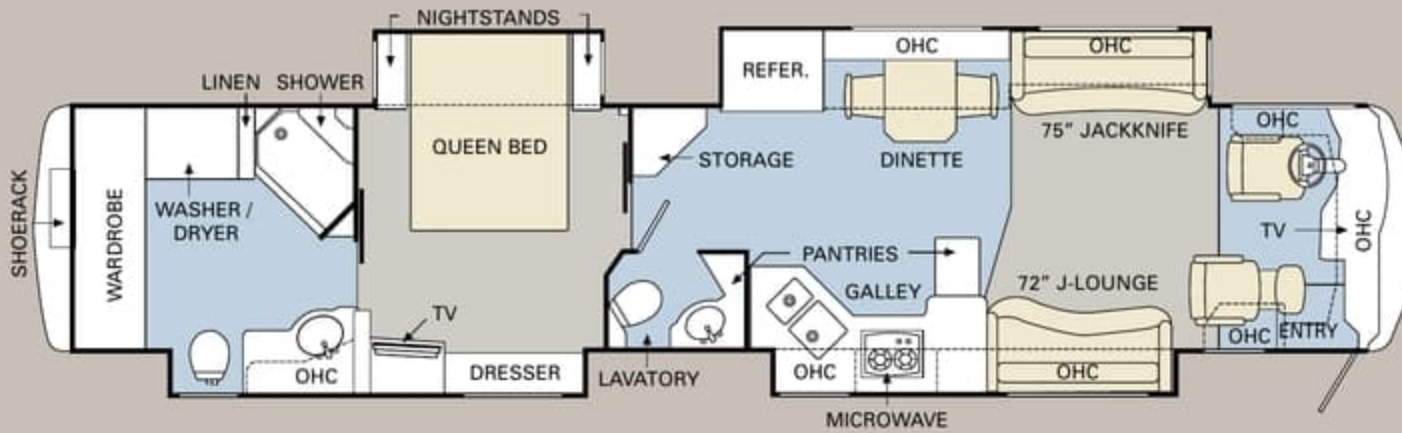
QUEEN IV



SQUIRE IV



RENAISSANCE IV



YORKSHIRE IV



STAFFORD IV

This floorplan comes with a big 500 HP engine with Allison® 4000 series transmission.

This floorplan comes with a big 500 HP engine with Allison® 4000 series transmission.



SPECIFICATIONS

Due to continuous product improvement, please see the website for the latest in standards and options, specifications, and technical data. *Go to www.monacocoach.com.*

	Weight Ratings (Lbs.)					Measurements	Tank Capacity (Gal.) ¹										
	Gross Vehicle	Gross Combined ²	Front Gross Axle	Rear Gross Axle	Tag Axle		Wheelbase	Overall Length	Overall Height (with A/C (add 5" for satellite option))	Interior Height	Interior Width	Exterior Width	Water Heater	Gray Tank	Black Tank	Fresh Tank	LP Tank ³
Bedford IV	38,160	48,160	15,160	23,000	N/A	226.25"	37' 2"	12' 6"	84"	96"	100.5"	N/A	70	40	100	25	150
Platinum IV	45,160	55,160	15,160	20,000	10,000	254.25"	41' 2"	12' 6"	84"	96"	100.5"	N/A	70	40	100	25	150
Diamond IV	45,160	55,160	15,160	20,000	10,000	266.25"	42' 2"	12' 6"	84"	96"	100.5"	10	70	40	100	25	150
Emperor IV	45,160	55,160	15,160	20,000	10,000	266.25"	42' 2"	12' 6"	84"	96"	100.5"	N/A	70	40	100	25	150
Nottingham IV	45,160	55,160	15,160	20,000	10,000	286.25"	43' 10"	12' 6"	84"	96"	100.5"	N/A	70	40	100	25	150
Queen IV	45,160	55,160	15,160	20,000	10,000	286.25"	43' 10"	12' 6"	84"	96"	100.5"	10	70	40	100	25	150
Squire IV	45,160	55,160	15,160	20,000	10,000	286.25"	43' 10"	12' 6"	84"	96"	100.5"	N/A	70	40	100	25	150
Renaissance IV	45,160	55,160	15,160	20,000	10,000	286.25"	43' 10"	12' 6"	84"	96"	100.5"	N/A	70	40	100	25	150
Yorkshire IV	50,160	60,160	15,160	23,000	12,000	290"	44' 11"	12' 6"	84"	96"	100.5"	N/A	70	40	100	25	150
Stafford IV	50,160	60,160	15,160	23,000	12,000	290"	44' 11"	12' 6"	84"	96"	100.5"	N/A	70	40	100	25	150

²Towing capacity is limited by GCWR; your vehicle's towing capacity is the difference between the GCWR and the actual vehicle weight, including all water, fuel, passengers and cargo. Your towed vehicle should be equipped with auxiliary brakes if the weight of the towed vehicle exceeds 1,000 lbs. Consult your owner's manual for further towing information.

¹All tank capacities are estimated based upon calculations provided by the tank manufacturers and represent approximate capacities. The actual "usable capacity" may be greater or less than the estimated capacities based upon fabrication and installation of the tanks.

³Actual filled LP capacity is 80% of listing due to safety shut-off required on tank.

The actual overall length of the recreational vehicle may differ from that indicated in the brochure due to variances in the manufacturing process and/or installed components. The actual length may be greater or less than that indicated. Due to the large variety of options and floorplan arrangements available to our customers, actual weights for each unit can differ significantly. Monaco Coach provides a weight sticker on each unit we produce which includes that unit's tank capacities and approximate weight. Consult your local Monaco Coach dealer for unit availability and further information. The information printed in this brochure reflects product design, fabrication, and component parts at the date of printing. The manufacturer reserves the right, at any time, to make changes in product design or material or component specifications as its sole option, without notice. This

includes the substitution of components of a different brand or trade name which will result in comparable performance. All information printed in this brochure is subject to change after the date of printing. Some features shown or mentioned in this brochure are optional and may only be available in selected floorplans. Photographs may show props or decorations that are not standard equipment on Monaco Coach models. Monaco Coach, the Monaco logo and its design, are registered trademarks. All other products and company names are trademarks and/or registered trademarks of their respective holders. While the color of the motorhome's exterior and the interior fabrics depicted in this sales brochure are fair and reasonable depictions, the colors depicted may not be an exact match of the actual colors because of the variances in photo-processing and variances caused by inserting the photographs

within the sales brochure. Due to product improvements, changes during the model year and/or transcription errors that may occur, information represented within this brochure may not be accurate at the time of your purchase. If certain information is significant to your purchasing decision, please confirm the information with your dealer prior to submitting your order. Component part and appliance manufacturers issue limited warranties covering those portions of the recreational vehicle not covered by the Limited Warranties issued by Monaco Coach Corporation. To learn which specific component parts and appliances are excluded from the Limited Warranties issued by Monaco Coach Corporation, please contact your selling dealership or Monaco Coach Corporation directly, or review the warranty packet inside the recreational vehicle.



SPECIFICATIONS

Due to continuous product improvement, please see the website for the latest in standards and options, specifications, and technical data. *Go to www.monacocoach.com.*

	Weight Ratings (Lbs.)					Measurements	Tank Capacity (Gal.) ²										
	Gross Vehicle	Gross Combined ¹	Front Gross Axle	Rear Gross Axle	Tag Axle		Wheelbase	Overall Length	Overall Height (with A/C) (add 5" for satellite option)	Interior Height	Interior Width	Exterior Width	Water Heater	Gray Tank	Black Tank	Fresh Tank	LP Tank ³
Bedford IV	38,160	48,160	15,160	23,000	N/A	226.5"	37' 2"	12' 6"	84"	96"	100.5"	N/A	70	40	100	25	150
Platinum IV	45,160	55,160	15,160	20,000	10,000	254.25"	41' 2"	12' 6"	84"	96"	100.5"	N/A	70	40	100	25	150
Diamond IV	45,160	55,160	15,160	20,000	10,000	266.25"	42' 2"	12' 6"	84"	96"	100.5"	10	70	40	100	25	150
Emperor IV	45,160	55,160	15,160	20,000	10,000	266.25"	42' 2"	12' 6"	84"	96"	100.5"	N/A	70	40	100	25	150
Nottingham IV	45,160	55,160	15,160	20,000	10,000	286.25"	43' 10"	12' 6"	84"	96"	100.5"	N/A	70	40	100	25	150
Queen IV	45,160	55,160	15,160	20,000	10,000	286.25"	43' 10"	12' 6"	84"	96"	100.5"	10	70	40	100	25	150
Squire IV	45,160	55,160	15,160	20,000	10,000	286.25"	43' 10"	12' 6"	84"	96"	100.5"	N/A	70	40	100	25	150
Renaissance IV	45,160	55,160	15,160	20,000	10,000	286.25"	43' 10"	12' 6"	84"	96"	100.5"	N/A	70	40	100	25	150
Yorkshire IV	50,160	60,160	15,160	23,000	12,000	290"	44' 11"	12' 6"	84"	96"	100.5"	N/A	70	40	100	25	150
Stafford IV	50,160	60,160	15,160	23,000	12,000	290"	44' 11"	12' 6"	84"	96"	100.5"	N/A	70	40	100	25	150

¹Towing capacity is limited by GCWR; your vehicle's towing capacity is the difference between the GCWR and the actual vehicle weight, including all water, fuel, passengers and cargo. Your towed vehicle should be equipped with auxiliary brakes if the weight of the towed vehicle exceeds 1,000 lbs. Consult your owner's manual for further towing information.

²All tank capacities are estimated based upon calculations provided by the tank manufacturers and represent approximate capacities. The actual "usable capacity" may be greater or less than the estimated capacities based upon fabrication and installation of the tanks.

³Actual filled LP capacity is 80% of listing due to safety shut-off required on tank.

The actual overall length of the recreational vehicle may differ from that indicated in the brochure due to variances in the manufacturing process and/or installed components. The actual length may be greater or less than that indicated. Due to the large variety of options and floorplan arrangements available to our customers, actual weights for each unit can differ significantly. Monaco Coach provides a weight sticker on each unit we produce which includes that unit's tank capacities and approximate weight. Consult your local Monaco Coach dealer for unit availability and further information. The information printed in this brochure reflects product design, fabrication, and component parts at the date of printing. The manufacturer reserves the right, at any time, to make changes in product design or material or component specifications as its sole option, without notice. This

includes the substitution of components of a different brand or trade name which will result in comparable performance. All information printed in this brochure is subject to change after the date of printing. Some features shown or mentioned in this brochure are optional and may only be available in selected floorplans. Photographs may show props or decorations that are not standard equipment on Monaco Coach models. Monaco Coach, the Monaco logo and its design, are registered trademarks. All other products and company names are trademarks and/or registered trademarks of their respective holders. While the color of the motorhome's exterior and the interior fabrics depicted in this sales brochure are fair and reasonable depictions, the colors depicted may not be an exact match of the actual colors because of the variances in photo-processing and variances caused by inserting the photographs

within the sales brochure. **Due to product improvements, changes during the model year and/or transcription errors that may occur, information represented within this brochure may not be accurate at the time of your purchase. If certain information is significant to your purchasing decision, please confirm the information with your dealer prior to submitting your order.** Component part and appliance manufacturers issue limited warranties covering those portions of the recreational vehicle not covered by the Limited Warranties issued by Monaco Coach Corporation. To learn which specific component parts and appliances are excluded from the Limited Warranties issued by Monaco Coach Corporation, please contact your selling dealership or Monaco Coach Corporation directly, or review the warranty packet inside the recreational vehicle.



BODY CONSTRUCTION

- › Heavy-Duty Steel Superstructure with Steel Cage Cockpit Construction
- › Seamless One-Piece Molded Crowned Fiberglass Roof
- › All-Season Foam Insulated Roof
- › Laminated Gel Coat Fiberglass Sidewalls
- › Five-Layer Flooring with Two Layers of OSB Flooring
- › Deluxe Full-Body Paint
- › Panaview™ 1-Piece Front Windshield
- › Triple Head Power Controlled Heated Chrome Exterior Mirrors with Turn Indicator Lights
- › Halogen Fog Lamps
- › Daytime Running Lights
- › Recessed Side Docking Lights
- › Roof-Mounted Dual Trumpet Air Horns
- › Entry Step Storage
- › Insulated Aluminum Baggage Doors with Power Locks and Chrome Bay Door Handles
- › Lined Pass-Through Storage Compartments
- › Interlocking Aluminum Framed Slide-Out Houses
- › Side-Hinged Baggage Doors with Electric Locks
- › Rear Ladder
- › Monaco Full-Length Mud Flap with Stainless Steel Logo
- › 3M Film Front Mask
- › Storage Bay Slide-Out Tray (Complete Pass-Through)

CHASSIS/ENGINE/SUSPENSION

- › Roadmaster S-Series Semi-Monocoque Chassis
- › 500 HP Electronic Engine with Allison® 4000 MH 6-Speed World Transmission and Electronic Shifter (Standard on Yorkshire IV and Stafford IV)
- › Cummins® ISL 425 HP (8.9L) Electronic Engine (with Fuel Injection) with Allison® 3000 MH 6-Speed World Transmission and Electronic Shifter
- › Torque: (@ 1,300 RPM) 1,200 lbs./ft. Max. Net
- › Engine Displacement: 538"/8.9L
- › Dual Fuel Fill
- › 200 Amp Alternator
- › Rear Axle Ratio: 4.78:1
- › Tires: 295/80R/22.5
- › Remote Transmission Fill
- › Polished Aluminum Wheels
- › Full-Cushion Air Glide Suspension with Ten Outboard-Mounted Air Bags and Ten Bilstein® Shock Absorbers
- › Automatic Traction Control
- › Anti-Locking Braking System with Front Disc Brakes and Rear Drum Brakes
- › Tag Axle with Anti-Lock Braking System (N/A: Bedford IV)
- › Two-Stage Jacobs Engine Brake (with Toggle Switch on Driver's Console)
- › Pre-Wire for Supplemental Braking System
- › Engine Block Heater with Switch on Dash
- › 10,000 Lb. Hitch Receiver and 7/4-Way Trailer Plug
- › Remote Inflation Connector

OPTIONS

- › Dual Leveling Systems (Air/Hydraulic)
- › Hydraulic Leveling System

COCKPIT

- › In-Dash AM/FM Stereo with Single CD Player
- › Auxiliary Audio Input in Cockpit Area
- › Color Rear Vision System
- › Integrated Compass and Temperature Gauge
- › CB Radio Prep (Cable and Antenna)
- › Recessed Slide-Out Dash Workstation
- › Manual Privacy Drape
- › Power Sunvisors
- › Pilot and Co-Pilot Side Window Manual Sunscreens
- › Adjustable Brake and Accelerator Pedals
- › Lighted VIP Smartwheel® with Controls for Windshield Wipers, ICC, and Cruise Control
- › Cruise Control Light on Dash
- › Six-Way Power Pilot and Co-Pilot Seats with Electric Lumbar, Electric Sliding Seat Cushion and Memory Capabilities on Pilot Side, Power Footrest on Co-Pilot Seat

OPTIONS

- › Power Solar Sunscreens with Blackout Shades
- › Electric Privacy Drape
- › Electric Cockpit Shades
- › CB Radio
- › Multi-Disc CD Player
- › GPS Navigation System
- › Sirius Satellite Radio System with FM Modulator (Requires Subscription)
- › SEE-Vision Coach Monitoring System



BODY CONSTRUCTION

- › Heavy-Duty Steel Superstructure with Steel Cage Cockpit Construction
- › Seamless One-Piece Molded Crowned Fiberglass Roof
- › All-Season Foam Insulated Roof
- › Laminated Gel Coat Fiberglass Sidewalls
- › Five-Layer Flooring with Two Layers of OSB Flooring
- › Deluxe Full-Body Paint
- › Panaview™ 1-Piece Front Windshield
- › Triple Head Power Controlled Heated Chrome Exterior Mirrors with Turn Indicator Lights
- › Halogen Fog Lamps
- › Daytime Running Lights
- › Recessed Side Docking Lights
- › Roof-Mounted Dual Trumpet Air Horns
- › Entry Step Storage
- › Insulated Aluminum Baggage Doors with Power Locks and Chrome Bay Door Handles
- › Lined Pass-Through Storage Compartments
- › Interlocking Aluminum Framed Slide-Out Houses
- › Side-Hinged Baggage Doors with Electric Locks
- › Rear Ladder
- › Monaco Full-Length Mud Flap with Stainless Steel Logo
- › 3M Film Front Mask
- › Storage Bay Slide-Out Tray (Complete Pass-Through)

CHASSIS/ENGINE/SUSPENSION

- › Roadmaster S-Series Semi-Monocoque Chassis
- › 500 HP Electronic Engine with Allison® 4000 MH 6-Speed World Transmission and Electronic Shifter (Standard on Yorkshire IV and Stafford IV)
- › Cummins® ISL 425 HP (8.9L) Electronic Engine (with Fuel Injection) with Allison® 3000 MH 6-Speed World Transmission and Electronic Shifter
- › Torque: (@ 1,300 RPM) 1,200 lbs./ft. Max. Net
- › Engine Displacement: 538"/8.9L
- › Dual Fuel Fill
- › 200 Amp Alternator
- › Rear Axle Ratio: 4.78:1
- › Tires: 295/80R/22.5
- › Remote Transmission Fill
- › Polished Aluminum Wheels
- › Full-Cushion Air Glide Suspension with Ten Outboard-Mounted Air Bags and Ten Bilstein® Shock Absorbers
- › Automatic Traction Control
- › Anti-Locking Braking System with Front Disc Brakes and Rear Drum Brakes
- › Tag Axle with Anti-Lock Braking System (N/A: Bedford IV)
- › Two-Stage Jacobs Engine Brake (with Toggle Switch on Driver's Console)
- › Pre-Wire for Supplemental Braking System
- › Engine Block Heater with Switch on Dash
- › 10,000 Lb. Hitch Receiver and 7/4-Way Trailer Plug
- › Remote Inflation Connector

OPTIONS

- › Dual Leveling Systems (Air/Hydraulic)
- › Hydraulic Leveling System

COCKPIT

- › In-Dash AM/FM Stereo with Single CD Player
- › Auxiliary Audio Input in Cockpit Area
- › Color Rear Vision System
- › Integrated Compass and Temperature Gauge
- › CB Radio Prep (Cable and Antenna)
- › Recessed Slide-Out Dash Workstation
- › Manual Privacy Drape
- › Power Sunvisors
- › Pilot and Co-Pilot Side Window Manual Sunscreens
- › Adjustable Brake and Accelerator Pedals
- › Lighted VIP Smartwheel® with Controls for Windshield Wipers, ICC, and Cruise Control
- › Cruise Control Light on Dash
- › Six-Way Power Pilot and Co-Pilot Seats with Electric Lumbar, Electric Sliding Seat Cushion and Memory Capabilities on Pilot Side, Power Footrest on Co-Pilot Seat

OPTIONS

- › Power Solar Sunscreens with Blackout Shades
- › Electric Privacy Drape
- › Electric Cockpit Shades
- › CB Radio
- › Multi-Disc CD Player
- › GPS Navigation System
- › Sirius Satellite Radio System with FM Modulator (Requires Subscription)
- › SEE-Vision Coach Monitoring System

APPLIANCES AND ACCESSORIES

- 12 Cu. Ft. Four-Door Refrigerator with Raised Panel Doors
- Recessed High-Output 2-Burner Cooktop with Flush-Mounted Covers
- Spacesaver Convection Microwave with Touch Control
- Electric TV Antenna
- Prep for Satellite Receiver (Living Room and Bedroom)
- 32" LCD TV in Living Area Overhead (N/A: Squire IV)
- 42" LCD TV in Entertainment Center (Stafford IV)
- 46" LCD TV in Living Area (Squire IV Only)
- 20" LCD TV with Remote in Bedroom
- 26" LCD TV in Bedroom (Emperor IV Only)
- Home Theater System with DVD/CD Player in Living Area
- Bedroom DVD Player
- Universal Remote System for Living Area TV

OPTIONS

- 37" LCD TV in Living Area Overhead (N/A: Squire IV and Stafford IV)
- 37" LCD TV Mounted in Living Area Ceiling (N/A: Squire IV and Stafford IV)
- 26" LCD TV in Living Area Overhead (Squire IV and Stafford IV)
- 26" LCD TV in Bedroom (Standard on Emperor IV)
- 32" LCD TV in Bedroom (Emperor IV Only)
- Residential Refrigerator with Water/Ice Dispenser in Door (Includes 2,800 Watt Pure Sine Wave Inverter and 4 Additional Batteries) (Requires Aqua-Hot® Heating System)
- 17 Cu Ft. Four-Door Refrigerator with Raised Panel Doors
- Stainless Steel Refrigerator Panels
- Combination Washer/Dryer
- Stackable Washer/Dryer (N/A: Emperor IV)
- Central Vacuum (Toe Kick N/A: Squire IV, without Full Tile Option)
- In-Motion Digital Satellite System (Does Not Include Receivers)
- KVH R6 Satellite System
- Exterior 32" Sony LCD TV (N/A: Squire IV, Nottingham IV)

INTERIOR

- Stained or Natural Solid Oak Cabinetry
- Dinette Wall Cabinet with Corian® Top
- Built-In Storage Area for Kitchen Countertop Covers
- Low-Friction Roller Drawer Guides
- Tiered Padded Vinyl Ceiling with Recess in Living Room
- High-Gloss Corian® Countertops Throughout with Three-Tiered Edge Detail
- Integrated Sinks in Vanity and Galley
- Scored Corian® Backsplashes in Galley and Bath Areas
- Day/Night Shades with Blackouts Throughout
- Mini Blinds in Galley and Bathroom
- Corian® Cutting Board
- Drawer Organizer in Galley
- Designer Carpeting in Living Area and Bedroom
- Ceramic Tile Flooring in Galley and Bath
- Ceramic Tile Flooring in Cockpit Area
- Raised Panel Door for Private Bath
- Bedspread and Pillows
- Nightstands with Corian® Countertops
- Corian® Windowsills in Living Area
- Recessed Galley Area Surround Sound Speakers in Ceiling
- Oil Rubbed Bronze Finish on Hardware Throughout

OPTIONS

- Decors: Island Pearl, Bahama Wind, Moonlight Sonata II, Autumn Sunburst II
- Ralph Lauren Decors: Landsdown II, Black Pearl, Windermere
- Cabinetry Options: Natural, Stained or Classic Cherry, Natural or Spiced Maple
- Mahogany Stained TV Cabinet (Squire IV Only)
- Ceiling Fan in Bedroom
- Sculptured Carpet in Living Area
- Full Tile Living Room Floor
- Plank Flooring in Galley and Bath
- Open Bath (Platinum IV)
- Solar Screens with Blackout Shades Throughout (Power in Living Area)

FURNITURE (FLOORPLAN DEPENDENT)

- Legless Side-Slide Corian® Dinette Table with Two Freestanding Dinette Chairs and Two Folding Chairs
- Fabric Sleeper Sofa with Drawer (Jackknife)
- Leather Sleeper J-Lounge with Drawer (N/A: Bedford IV)
- Leather Sleeper Sofa (Bedford IV)
- Queen Mattress

OPTIONS

- King Bed (N/A: Squire IV)
- Queen Air Mattress with Digital Remote
- King Air Mattress with Digital Remote (N/A: Squire IV)
- Roadside: Computer Table with Leather Euro-Recliner and Ottoman
- Leather Sleeper Sofa with Drawer
- Leather Hide-a-Bed with Air Mattress (N/A on Emperor IV and Diamond IV)
- Leather Hide-A-Bed
- Fabric/Leather J-Lounge
- Fabric/Leather Sectional Booth Dinette Ensemble
- Two Folding Chairs with Fabric/Leather Sectional Booth Dinette Ensemble

APPLIANCES AND ACCESSORIES

- › 12 Cu. Ft. Four-Door Refrigerator with Raised Panel Doors
- › Recessed High-Output 2-Burner Cooktop with Flush-Mounted Covers
- › Spacesaver Convection Microwave with Touch Control
- › Electric TV Antenna
- › Prep for Satellite Receiver (Living Room and Bedroom)
- › 32" LCD TV in Living Area Overhead (N/A: Squire IV)
- › 42" LCD TV in Entertainment Center (Stafford IV)
- › 46" LCD TV in Living Area (Squire IV Only)
- › 20" LCD TV with Remote in Bedroom
- › 26" LCD TV in Bedroom (Emperor IV Only)
- › Home Theater System with DVD/CD Player in Living Area
- › Bedroom DVD Player
- › Universal Remote System for Living Area TV

OPTIONS

- › 37" LCD TV in Living Area Overhead (N/A: Squire IV and Stafford IV)
- › 37" LCD TV Mounted in Living Area Ceiling (N/A: Squire IV and Stafford IV)
- › 26" LCD TV in Living Area Overhead (Squire IV and Stafford IV)
- › 26" LCD TV in Bedroom (Standard on Emperor IV)
- › 32" LCD TV in Bedroom (Emperor IV Only)
- › Residential Refrigerator with Water/Ice Dispenser in Door (Includes 2,800 Watt Pure Sine Wave Inverter and 4 Additional Batteries) (Requires Aqua-Hot® Heating System)
- › 17 Cu Ft. Four-Door Refrigerator with Raised Panel Doors
- › Stainless Steel Refrigerator Panels
- › Combination Washer/Dryer
- › Stackable Washer/Dryer (N/A: Emperor IV)
- › Central Vacuum (Toe Kick N/A: Squire IV, without Full Tile Option)
- › In-Motion Digital Satellite System (Does Not Include Receivers)
- › KVH R6 Satellite System
- › Exterior 32" Sony LCD TV (N/A: Squire IV, Nottingham IV)

INTERIOR

- › Stained or Natural Solid Oak Cabinetry
- › Dinette Wall Cabinet with Corian® Top
- › Built-In Storage Area for Kitchen Countertop Covers
- › Low-Friction Roller Drawer Guides
- › Tiered Padded Vinyl Ceiling with Recess in Living Room
- › High-Gloss Corian® Countertops Throughout with Three-Tiered Edge Detail
- › Integrated Sinks in Vanity and Galley
- › Scored Corian® Backsplashes in Galley and Bath Areas
- › Day/Night Shades with Blackouts Throughout
- › Mini Blinds in Galley and Bathroom

- › Corian® Cutting Board
- › Drawer Organizer in Galley
- › Designer Carpeting in Living Area and Bedroom
- › Ceramic Tile Flooring in Galley and Bath
- › Ceramic Tile Flooring in Cockpit Area
- › Raised Panel Door for Private Bath
- › Bedspread and Pillows
- › Nightstands with Corian® Countertops
- › Corian® Windowsills in Living Area
- › Recessed Galley Area Surround Sound Speakers in Ceiling
- › Oil Rubbed Bronze Finish on Hardware Throughout

OPTIONS

- › Decors: Island Pearl, Bahama Wind, Moonlight Sonata II, Autumn Sunburst II
- › Ralph Lauren Decors: Landsdown II, Black Pearl, Windermere
- › Cabinetry Options: Natural, Stained or Classic Cherry, Natural or Spiced Maple
- › Mahogany Stained TV Cabinet (Squire IV Only)
- › Ceiling Fan in Bedroom
- › Sculptured Carpet in Living Area
- › Full Tile Living Room Floor
- › Plank Flooring in Galley and Bath
- › Open Bath (Platinum IV)
- › Solar Screens with Blackout Shades Throughout (Power in Living Area)

FURNITURE (FLOORPLAN DEPENDENT)

- › Legless Side-Slide Corian® Dinette Table with Two Freestanding Dinette Chairs and Two Folding Chairs
- › Fabric Sleeper Sofa with Drawer (Jackknife)
- › Leather Sleeper J-Lounge with Drawer (N/A: Bedford IV)
- › Leather Sleeper Sofa (Bedford IV)
- › Queen Mattress

OPTIONS

- › King Bed (N/A: Squire IV)
- › Queen Air Mattress with Digital Remote
- › King Air Mattress with Digital Remote (N/A: Squire IV)
- › Roadside: Computer Table with Leather Euro-Recliner and Ottoman
- › Leather Sleeper Sofa with Drawer
- › Leather Hide-a-Bed with Air Mattress (N/A on Emperor IV and Diamond IV)
- › Leather Hide-A-Bed
- › Fabric/Leather J-Lounge
- › Fabric/Leather Sectional Booth Dinette Ensemble
- › Two Folding Chairs with Fabric/Leather Sectional Booth Dinette Ensemble



ELECTRICAL SYSTEMS AND LIGHTS

- 50 Amp 120/240V Distribution Panel and Power Cord with Quick Disconnect
- Onan® 10.0 kW QD Generator on Power Slide-Out Tray
- 2,000 Watt Pure Sine Wave Inverter with Auto Gen Start and Auto Temp Start
- Pilot and Co-Pilot Map Lights
- Switches for Bedroom Decorative Lights on Both Sides of Bed
- Lighted Utility Center
- Underhood Utility Light
- 120V Outlet in Private Bath
- 120V Outlet in Bed Base
- 120V Receptacles in Outside Storage Compartment
- Lighted Exterior Storage Compartments
- Four 6V House Batteries
- Two 12V Chassis Batteries
- Surge Guard™ Automatic Transfer Switch
- Multiplex 12V Wiring for Dash/Instrument Panel Gauges and Interior of Coach

OPTIONS

- Solar Panel (100 Watt)
- Power Cord Reel (50 Amp)
- 2,800 Watt Pure Sine Wave Inverter (Required with Residential Refrigerator Option)

PLUMBING AND LP SYSTEMS

- Central Water Filtration System in Service Bay
- Manabloc Water System for Entire Coach
- 10-Gallon LP Gas/Electric Water Heater with Electronic Ignition (N/A on Emperor IV, Nottingham IV, Squire IV, Renaissance IV, Stafford IV and Yorkshire IV)
- Insulated Systems Compartment with Easy Access to Hook-Up
- Water Pump Switch in Galley, Bathroom and Service Bay
- China Toilet
- Super Service Center
- Granicoat Shower with Clear Glass Door
- Shower Head Shut-Off
- Black and Gray Holding Tank Rinsing System
- Outside Faucet with Hot and Cold Water
- Fresh Water Tank with Auto Shut-Off and Auto Fill

OPTIONS

- Power Water Hose Reel
- RV Sani-Con Tank Drainage System
- Ozone Water Filter at Galley Sink
- Insta-Hot® Water System
- Bathtub

HEATING, VENTS AND AIR CONDITIONING

- Two Low-Profile Ducted 15M BTU Roof Air Conditioners with Wall Thermostat and Heat Pump (N/A on 42' and Longer Floorplans)
- Three Low-Profile Ducted 15M BTU Roof Air Conditioners with Wall Thermostat and Heat Pump (42' and Longer Floorplans Only)
- Two 25M BTU Electronic Ignition Furnaces (N/A on Emperor IV, Bedford IV, Nottingham IV, Squire IV, Renaissance IV, Yorkshire IV and Stafford IV)
- Aqua-Hot® Heating System (Platinum IV, Emperor IV, Bedford IV, Stafford IV, Nottingham IV, Squire IV, Renaissance IV and Yorkshire IV)
- Electronic AC/Heat Climate Control System
- Center Defroster Vents
- 12V Attic Fan with Wall Thermostat and Rain Sensors in Bathroom, Private Lavatory and Galley

OPTIONS

- Aqua-Hot® Heating System (Standard on Platinum IV, Emperor IV, Bedford IV, Nottingham IV, Squire IV, Renaissance IV, Yorkshire IV and Stafford IV)

WINDOWS, DOORS AND AWNINGS

- Flush-Mounted Radius Dual Pane Safety Glass Dark Tinted Windows
- Front Entry Door with Air Seal, Removable Top Screen and Automatic Front Door Awning
- Keyless Remote Entry System with Pocket Remote
- Topper Awnings on Slide-Out Houses
- Window Awnings on All Slide-Out House Windows (N/A on Passenger Side Front Slide-Out Windows)
- Automatic Patio Awning

OPTIONS

- Girard® Automatic Patio Awning
- Girard® Automatic Front Door Awning

SAFETY

- Back-Up Alarm
- Fire Extinguisher
- Deadbolt Lock on Entrance Door
- Lighted Interior and Exterior Grab Handles
- 120V GFI Protected Circuit
- LP Gas Detector
- Smoke Detector
- Flush-Mounted Carbon Monoxide Detector
- Integrated Pilot and Co-Pilot Three-Point Seatbelts
- Third Brake Safety Light
- Egress Windows

OPTIONS

- Security Safe
- Deluxe Security Alarm System
- Collision Avoidance System



ELECTRICAL SYSTEMS AND LIGHTS

- › 50 Amp 120/240V Distribution Panel and Power Cord with Quick Disconnect
- › Onan® 10.0 kW QD Generator on Power Slide-Out Tray
- › 2,000 Watt Pure Sine Wave Inverter with Auto Gen Start and Auto Temp Start
- › Pilot and Co-Pilot Map Lights
- › Switches for Bedroom Decorative Lights on Both Sides of Bed
- › Lighted Utility Center
- › Underhood Utility Light
- › 120V Outlet in Private Bath
- › 120V Outlet in Bed Base
- › 120V Receptacles in Outside Storage Compartment
- › Lighted Exterior Storage Compartments
- › Four 6V House Batteries
- › Two 12V Chassis Batteries
- › Surge Guard™ Automatic Transfer Switch
- › Multiplex 12V Wiring for Dash/Instrument Panel Gauges and Interior of Coach

OPTIONS

- › Solar Panel (100 Watt)
- › Power Cord Reel (50 Amp)
- › 2,800 Watt Pure Sine Wave Inverter (Required with Residential Refrigerator Option)

PLUMBING AND LP SYSTEMS

- › Central Water Filtration System in Service Bay
- › Manabloc Water System for Entire Coach
- › 10-Gallon LP Gas/Electric Water Heater with Electronic Ignition (N/A on Emperor IV, Nottingham IV, Squire IV, Renaissance IV, Stafford IV and Yorkshire IV)
- › Insulated Systems Compartment with Easy Access to Hook-Up
- › Water Pump Switch in Galley, Bathroom and Service Bay
- › China Toilet
- › Super Service Center
- › Granicoat Shower with Clear Glass Door
- › Shower Head Shut-Off
- › Black and Gray Holding Tank Rinsing System
- › Outside Faucet with Hot and Cold Water
- › Fresh Water Tank with Auto Shut-Off and Auto Fill

OPTIONS

- › Power Water Hose Reel
- › RV Sani-Con Tank Drainage System
- › Ozone Water Filter at Galley Sink
- › Insta-Hot® Water System
- › Bathtub

HEATING, VENTS AND AIR CONDITIONING

- › Two Low-Profile Ducted 15M BTU Roof Air Conditioners with Wall Thermostat and Heat Pump (N/A on 42' and Longer Floorplans)
- › Three Low-Profile Ducted 15M BTU Roof Air Conditioners with Wall Thermostat and Heat Pump (42' and Longer Floorplans Only)
- › Two 25M BTU Electronic Ignition Furnaces (N/A on Emperor IV, Bedford IV, Nottingham IV, Squire IV, Renaissance IV, Yorkshire IV and Stafford IV)
- › Aqua-Hot® Heating System (Platinum IV, Emperor IV, Bedford IV, Stafford IV, Nottingham IV, Squire IV, Renaissance IV and Yorkshire IV)
- › Electronic AC/Heat Climate Control System
- › Center Defroster Vents
- › 12V Attic Fan with Wall Thermostat and Rain Sensors in Bathroom, Private Lavatory and Galley

OPTIONS

- › Aqua-Hot® Heating System (Standard on Platinum IV, Emperor IV, Bedford IV, Nottingham IV, Squire IV, Renaissance IV, Yorkshire IV and Stafford IV)

WINDOWS, DOORS AND AWNINGS

- › Flush-Mounted Radius Dual Pane Safety Glass Dark Tinted Windows
- › Front Entry Door with Air Seal, Removable Top Screen and Automatic Front Door Awning
- › Keyless Remote Entry System with Pocket Remote
- › Topper Awnings on Slide-Out Houses
- › Window Awnings on All Slide-Out House Windows (N/A on Passenger Side Front Slide-Out Windows)
- › Automatic Patio Awning

OPTIONS

- › Girard® Automatic Patio Awning
- › Girard® Automatic Front Door Awning

SAFETY

- › Back-Up Alarm
- › Fire Extinguisher
- › Deadbolt Lock on Entrance Door
- › Lighted Interior and Exterior Grab Handles
- › 120V GFI Protected Circuit
- › LP Gas Detector
- › Smoke Detector
- › Flush-Mounted Carbon Monoxide Detector
- › Integrated Pilot and Co-Pilot Three-Point Seatbelts
- › Third Brake Safety Light
- › Egress Windows

OPTIONS

- › Security Safe
- › Deluxe Security Alarm System
- › Collision Avoidance System

BEING DIFFERENT MAKES ALL THE DIFFERENCE.

At Monaco, we always strive to be the best. And that means thinking outside the box. Giving you more of what you want in an RV. Like our exclusive Roadmaster chassis. Three factory-owned service centers. And programs like Monaco Financial Services and 24/7 roadside assistance. No other manufacturer can match Monaco's offerings. No one even comes close. Why not discover the difference for yourself? Go Monaco.

*"No other manufacturer can match
Monaco's offerings. No one even comes close."*



www.monacodifferent.com | 877-252-4666

DEALER:



MONACO™

DRIVING YOUR DREAM.

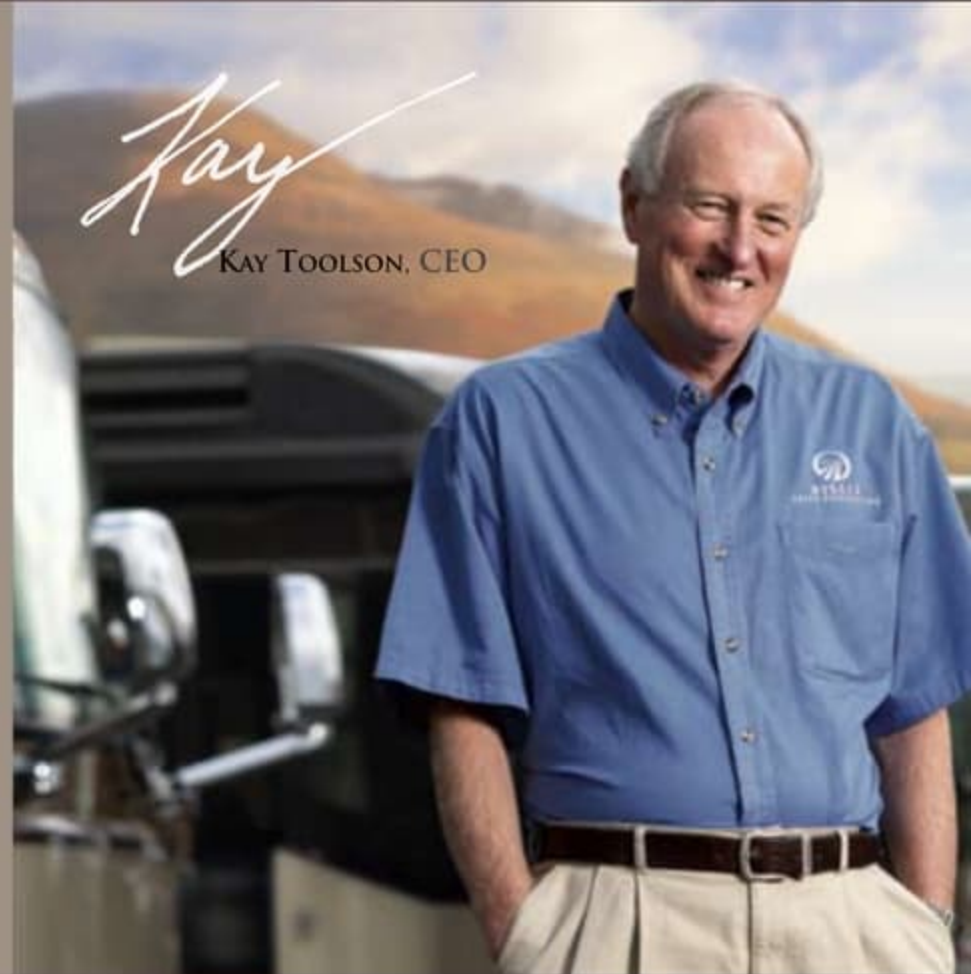
91320 Coburg Industrial Way, Coburg, OR 97408 | 800-634-0855

www.monacocoach.com

BEING DIFFERENT MAKES ALL THE DIFFERENCE.

At Monaco, we always strive to be the best. And that means thinking outside the box. Giving you more of what you want in an RV. Like our exclusive Roadmaster chassis. Three factory-owned service centers. And programs like Monaco Financial Services and 24/7 roadside assistance. No other manufacturer can match Monaco's offerings. No one even comes close. Why not discover the difference for yourself? Go Monaco.

“No other manufacturer can match Monaco's offerings. No one even comes close.”



www.monacodifferent.com | 877-252-4666

DEALER:



MONACO®

DRIVING YOUR DREAM.

91320 Coburg Industrial Way, Coburg, OR 97408 | 800 634-0855

www.monacocoach.com