



MONACO®

DRIVING YOUR DREAM.

KNIGHT®

 | 08





DRIVING YOUR DREAM.

KNIGHT®





KNIGHT™

YOUR KNIGHT IN SHINING FULL-BODY PAINT.

Finally, a coach that lives up to all your romantic notions of what Class A living should be. The 2008 Knight. This chivalrous coach has everything you've been dreaming of — stylish new furnishings, Ultraleather™ pilot seats with six-way power, a giant 37" flatscreen LCD TV (40SKQ only), even a handsome face (featuring a new front cap and full-body painted graphics). Why, it's enough to make you swoon.

KITCHEN. For those who prefer a front kitchen, the 40SKQ (below) is happy to oblige. You'll also be treated to a convection microwave, an easy-clean cooktop with three sealed burners, polished solid surface countertops, and new ceramic tile. Stunning.

BEDROOM. In the sleeping quarters, you'll find everything you need — a plush queen bed, nightstands, roomy overheads, an oversized wardrobe.... Even the 20" LCD TV is now standard.



WHAT'S NEW FOR '08.

- New front molded fiberglass cap with black chrome accent
- New graphics (4 paint colors)
- New automotive style dash
- VIP steering wheel
- Ultraleather™ pilot seats with 6-way power
- Ceramic tile in kitchen, bath and entryway
- New style furniture
- 32" LCD TV in living room overhead now standard
- 20" LCD TV in bedroom now standard





KNIGHT®

YOUR KNIGHT IN SHINING FULL-BODY PAINT.

Finally, a coach that lives up to all your romantic notions of what Class A living should be. The 2008 Knight. This chivalrous coach has everything you've been dreaming of — stylish new furnishings, Ultraleather™ pilot seats with six-way power, a giant 37" flatscreen LCD TV (40SKQ only), even a handsome face (featuring a new front cap and full-body painted graphics). Why, it's enough to make you swoon.

KITCHEN. For those who prefer a front kitchen, the 40SKQ (below) is happy to oblige. You'll also be treated to a convection microwave, an easy-clean cooktop with three sealed burners, polished solid surface countertops, and new ceramic tile. Stunning.

BEDROOM. In the sleeping quarters, you'll find everything you need — a plush queen bed, nightstands, roomy overheads, an oversized wardrobe.... Even the 20" LCD TV is now standard.



WHAT'S NEW FOR '08.

- New front molded fiberglass cap with black chrome accent
- New graphics (4 paint colors)
- New automotive style dash
- VIP steering wheel
- Ultraleather™ pilot seats with 6-way power
- Ceramic tile in kitchen, bath and entryway
- New style furniture
- 32" LCD TV in living room overhead now standard
- 20" LCD TV in bedroom now standard



LUXURY. INNOVATION. HAPPY TRAVELERS. IT ALL SAYS MONACO.

INTERIOR



Wherever you travel across America, it's easy to spot the Monaco owners. They're the ones with the smug, happy grins on their faces. And who could blame them? When you own a Monaco, you own the best. The best in luxury, performance, safety, technology and comfort. It's all here. And it's all yours for the taking. Come on, freedom lovers. Make your move to Monaco luxury. After all, you already know how to grin.



CHAMPAGNE SELECT | ISLAND STYLE

40SKQ

LUXURY. INNOVATION. HAPPY TRAVELERS. IT ALL SAYS MONACO.

INTERIOR



Wherever you travel across America, it's easy to spot the Monaco owners. They're the ones with the smug, happy grins on their faces. And who could blame them? When you own a Monaco, you own the best. The best in luxury, performance, safety, technology and comfort. It's all here. And it's all yours for the taking. Come on, freedom lovers. Make your move to Monaco luxury. After all, you already know how to grin.



40SKQ | CHAMPAGNE SELECT | ISLAND STYLE



THE ROAD TO FREEDOM IS CALLING.

 **PANAVIEW™**
1-PIECE WINDSHIELD





THE ROAD TO FREEDOM IS CALLING.

 **PANAVIEW™**
1-PIECE WINDSHIELD



KNIGHT® COCKPIT/EXTERIOR



Trade in your to-do list for a trusty road atlas, and climb aboard. The 2008 Knight is ready to roam. And what a comfortable ride it's going to be – with Ultraleather™ upholstery, adjustable brake and accelerator pedals, power sunvisors, easy-to-read analog gauges, and a new VIP steering wheel. Even the in-dash radio/CD player is poised for long road trips with its built-in weather band and Sirius-ready compatibility.

Care to sweeten the deal? Your options include GPS navigation, Sirius satellite radio, an engine monitoring system, and a three-camera rear vision system with audio and adjustable camera (single-camera is standard).

NO SEAMS. ADDED SAFETY. With our exclusive Panaview™ 1-Piece Windshield, you get a clear view of the world ahead. There's no annoying black rubber seam running down the middle of the windshield. It's the largest unobstructed view in the industry.

COCKPIT. This year, we did some major upgrading, and now both captain's chairs are equipped with six-way power for the ultimate in lumbar support. The co-pilot's seat also comes with a power footrest. Ahhhh, yes.

STORAGE. If you have big items to carry, we have even bigger places to store them. Check out the large pass-through storage bay shown below. It's made of one-piece polyethylene for easy washdowns. An optional slide-out tray is also available.



405KQ | CHAMPAGNE SELECT | ISLAND STYLE





40SKQ | CHAMPAGNE SELECT | ISLAND STYLE

Trade in your to-do list for a trusty road atlas, and climb aboard. The 2008 Knight is ready to roam. And what a comfortable ride it's going to be — with Ultraleather™ upholstery, adjustable brake and accelerator pedals, power sunvisors, easy-to-read analog gauges, and a new VIP steering wheel. Even the in-dash radio/CD player is poised for long road trips with its built-in weather band and Sirius-ready compatibility.

Care to sweeten the deal? Your options include GPS navigation, Sirius satellite radio, an engine monitoring system, and a three-camera rear vision system with audio and adjustable camera (single-camera is standard).

NO SEAMS. ADDED SAFETY. With our exclusive Panaview™ 1-Piece Windshield, you get a clear view of the world ahead. There's no annoying black rubber seam running down the middle of the windshield. It's the largest unobstructed view in the industry.

COCKPIT. This year, we did some major upgrading, and now both captain's chairs are equipped with six-way power for the ultimate in lumbar support. The co-pilot's seat also comes with a power footrest. Ahhhh, yes.

STORAGE. If you have big items to carry, we have even bigger places to store them. Check out the large pass-through storage bay shown below. It's made of one-piece polyethylene for easy washdowns. An optional slide-out tray is also available.





WARRANTIES

12 MONTH/24,000 MILE basic limited warranty

5 YEAR/50,000 MILE limited warranty on aluminum or steel frame structure of sidewall, roof, front and rear cap

3 YEAR/50,000 MILE limited warranty on Roadmaster chassis

Applies to certain models. See owner's manual for complete details.



ROADMASTER RR8R RAISED RAIL CHASSIS

1 The Knight features a gutsy standard Cummins® ISC 360 diesel engine with 1,050 lbs./ft. of torque.



2 A steel cage cockpit gives the Roadmaster chassis incomparable strength and safety in the front of the coach.

3 Every Roadmaster chassis features a steel firewall for added protection in the cockpit.

4 The main rails feature an exclusive raised rail design which provides for larger full pass-through storage bays with flush floors.

Other highlights include a 3/8" thick frame rail — compared to the 1/4" of other manufacturers — and a stacked aluminum intercooler and radiator for optimum heat transfer and cooling.

5 Dual fuel fill allows you to fill the tank from either side of the coach, for greater convenience and flexibility at the pump.

6 This steel truss system is engineered as part of the chassis and provides outstanding strength and rigidity plus pass-through storage. In addition, the structure is pre-primed and coated with a rust-inhibiting paint.

7 Eight air bags work in conjunction with eight gas-charged shock absorbers to prevent road trauma from ever reaching the coach.

Ride height sensors continually adjust the air pressure at each axle to maintain a level ride and eliminate nosediving, weight transfer, and floating on curved roads. This system also stabilizes the coach on uneven surfaces.

8 Automatic Traction Control (ATC) eliminates wheel slippage in slick conditions and heightens control. The Anti-Lock Braking System (ABS) gives you superior stopping power, especially on steep grades. Together, these sophisticated systems offer the very best safety on the road.

MAY WE BUILD YOU A CHASSIS?

Did you know that every Roadmaster chassis is custom designed and built for the Monaco coach that will ride on it? It's a novel idea, but our owners seem to like it. And it pays off — in better performance, safety and reliability. Owners also like the fact that Roadmaster, a division of

Monaco Coach Corporation, only does one thing: They build chassis for motorhomes. Not trucks. Not buses. Just motorhomes. So naturally, they do it better. No wonder Roadmaster is the leading high-end diesel chassis manufacturer in America.



WARRANTIES

12 MONTH/24,000 MILE basic limited warranty

5 YEAR/50,000 MILE limited warranty on aluminum or steel frame structure of sidewall, roof, front and rear cap

3 YEAR/50,000 MILE limited warranty on Roadmaster chassis

Applies to certain models. See owner's manual for complete details.



ROADMASTER RR8R RAISED RAIL CHASSIS

1 The Knight features a gutsy standard Cummins® ISC 360 diesel engine with 1,050 lbs./ft. of torque.

2 A steel cage cockpit gives the Roadmaster chassis incomparable strength and safety in the front of the coach.

3 Every Roadmaster chassis features a steel firewall for added protection in the cockpit.

4 The main rails feature an exclusive raised rail design which provides for larger full pass-through storage bays with flush floors.



Other highlights include a 3/8" thick frame rail — compared to the 1/4" of other manufacturers — and a stacked aluminum intercooler and radiator for optimum heat transfer and cooling.

5 Dual fuel fill allows you to fill the tank from either side of the coach, for greater convenience and flexibility at the pump.

6 This steel truss system is engineered as part of the chassis and provides outstanding strength and rigidity plus pass-through storage. In addition, the structure is pre-primed and coated with a rust-inhibiting paint.

7 Eight air bags work in conjunction with eight gas-charged shock absorbers to prevent road trauma from ever reaching the coach. Ride height sensors continually adjust the air pressure at each axle to maintain a level ride and eliminate nosediving, weight transfer, and floating on curved roads. This system also stabilizes the coach on uneven surfaces.

8 Automatic Traction Control (ATC) eliminates wheel slippage in slick conditions and heightens control. The Anti-Lock Braking System (ABS) gives you superior stopping power, especially on steep grades. Together, these sophisticated systems offer the very best safety on the road.

MAY WE BUILD YOU A CHASSIS?

Did you know that every Roadmaster chassis is custom designed and built for the Monaco coach that will ride on it? It's a novel idea, but our owners seem to like it. And it pays off — in better performance, safety and reliability. Owners also like the fact that Roadmaster, a division of

Monaco Coach Corporation, only does one thing: They build chassis for motorhomes. Not trucks. Not buses. Just motorhomes. So naturally, they do it better. No wonder Roadmaster is the leading high-end diesel chassis manufacturer in America.

ALUMAFRAME® SUPERSTRUCTURE

The Knight features Monaco's exclusive Alumaframe® Superstructure.

Our revolutionary system of aluminum C-Channel crossmembers runs the entire length of the unit, with double-welded intersections for added strength. This rigid design is both lighter and sturdier than wood or tubular aluminum frames — and much more reliable than butt-welded or screwed joint designs. From dirt roads to potholes, you can count on Alumaframe® to handle the relentless stresses of the road and provide superior structural integrity for many years to come.



OUTBOARD AIR BAG SUSPENSION

The outboard-mounted air bags are protected by two steel plates and are placed farther apart than the competition, providing a wider and more stable platform for the coach. The active suspension automatically adjusts the pressure of the air bags as you drive and virtually eliminates nosediving and the side-to-side body sway associated with high wind conditions, curvy roads and emergency maneuvers.



Allison® 3000 MH 6-speed World Transmission and electronic shifter.

The three-point engine mounting system lowers the coach's center of gravity and reduces the amount of vibration that reaches the coach. The mounting also makes the engine easier to service.

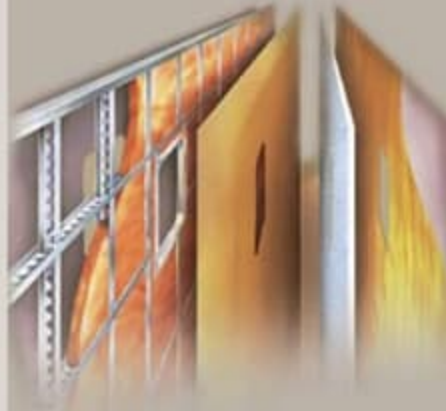
A 10,000 lb. tow hitch rating is the highest in its class.



ROOF CONSTRUCTION:

(top to bottom)

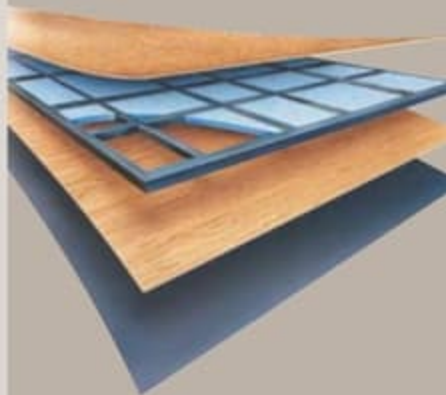
- One-piece peaked fiberglass roof
- Luaun backing
- Thick, tapered bead foam insulation
- Aluminum double I-beam superstructure filled with fiberglass insulation
- Vapor barrier
- Structure foam: thermal insulative barrier
- 1/2" bead foam insulation
- Foam padding for extra insulation
- Padded vinyl ceiling



SIDEWALL CONSTRUCTION:

(left to right)

- High-gloss gel coat fiberglass
- Interlocking C-Channel filled with 1-1/2" fiberglass insulation glued in place so it doesn't sag or leave spaces uninsulated
- Vapor barrier
- Bead foam saves energy and provides a thermal insulative barrier
- Interior paneling



FLOOR CONSTRUCTION:

(top to bottom)

- Structurwood™
- 1-1/2" tube
- Blue foam
- Luaun
- 3-ply backer



ASSISTANCE

SALES • TECH • ROADSIDE

1-877-4MONACO

WE'RE HERE. ANYTIME, EVERY TIME.

- Reach us anytime — literally — via our live customer support line.
- Drive in to one of our 350 Service Centers.
- Enjoy the first year free when you enroll in our Owner Advantage Roadside Assistance Program.
- See where it all begins with a tour of one of our facilities in Indiana or Oregon. Call 1-800-650-7337 or 1-800-634-0855 to find out more.

ALUMAFRAME® SUPERSTRUCTURE

The Knight features Monaco's exclusive Alumaframe® Superstructure. Our revolutionary system of aluminum C-Channel crossmembers runs the entire length of the unit, with double-welded intersections for added strength. This rigid design is both lighter and sturdier than wood or tubular aluminum frames — and much more reliable than butt-welded or screwed joint designs. From dirt roads to potholes, you can count on Alumaframe® to handle the relentless stresses of the road and provide superior structural integrity for many years to come.



OUTBOARD AIR BAG SUSPENSION

The outboard-mounted air bags are protected by two steel plates and are placed farther apart than the competition, providing a wider and more stable platform for the coach. The active suspension automatically adjusts the pressure of the air bags as you drive and virtually eliminates nosediving and the side-to-side body sway associated with high wind conditions, curvy roads and emergency maneuvers.



9 Allison® 3000 MH 6-speed World Transmission and electronic shifter.

The three-point engine mounting system lowers the coach's center of gravity and reduces the amount of vibration that reaches the coach. The mounting also makes the engine easier to service.

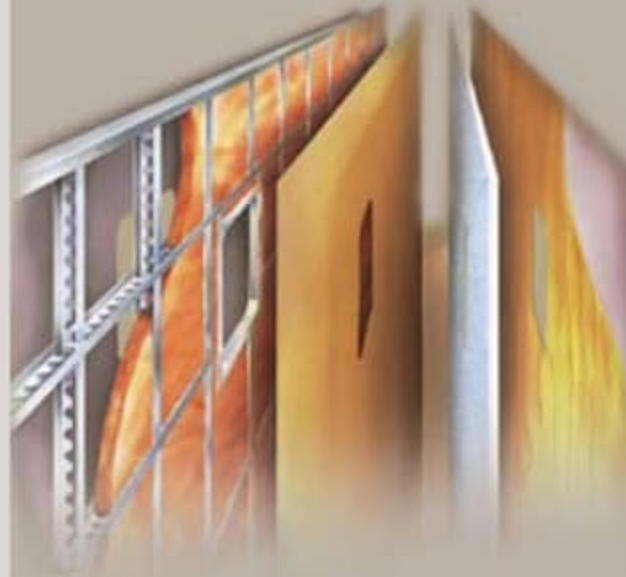
A 10,000 lb. tow hitch rating is the highest in its class.



ROOF CONSTRUCTION:

(top to bottom)

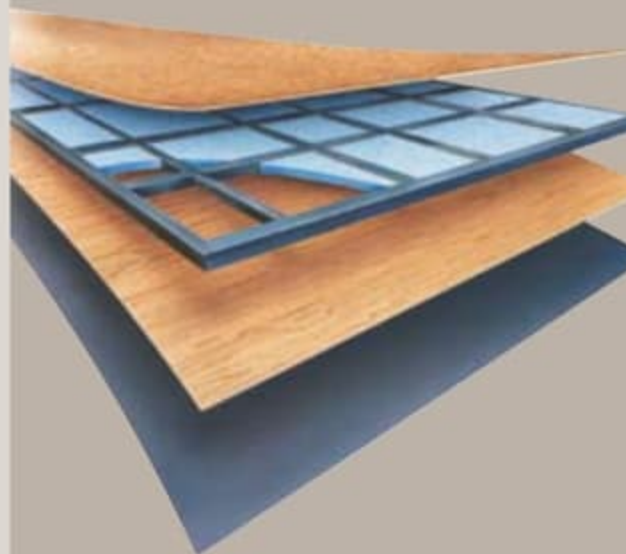
- One-piece peaked fiberglass roof
- Luaun backing
- Thick, tapered bead foam insulation
- Aluminum double I-beam superstructure filled with fiberglass insulation
- Vapor barrier
- Structure foam: thermal insulative barrier
- 1/2" bead foam insulation
- Foam padding for extra insulation
- Padded vinyl ceiling



SIDEWALL CONSTRUCTION:

(left to right)

- High-gloss gel coat fiberglass
- Interlocking C-Channel filled with 1-1/2" fiberglass insulation glued in place so it doesn't sag or leave spaces uninsulated
- Vapor barrier
- Bead foam saves energy and provides a thermal insulative barrier
- Interior paneling



FLOOR CONSTRUCTION:

(top to bottom)

- Structurwood™
- 1-1/2" tube
- Blue foam
- Luaun
- 3-ply backer



ASSISTANCE

SALES • TECH • ROADSIDE

1-877-4MONACO

WE'RE HERE. ANYTIME, EVERY TIME.

- Reach us anytime — literally — via our live customer support line.
- Drive in to one of our 350 Service Centers.
- Enjoy the first year free when you enroll in our Owner Advantage Roadside Assistance Program.
- See where it all begins with a tour of one of our facilities in Indiana or Oregon. Call 1-800-650-7337 or 1-800-634-0855 to find out more.



DEVONSHIRE



ISLAND STYLE



Note: Colors depicted are a reasonable representation though they may not be an exact match of the actual colors due to variances in processing and production. See your dealer for actual fabric and paint chip samples.

Carpet A
 Dinette B
 Sofa C
 Bedspread D

A	B	C	D



DEVONSHIRE



ISLAND STYLE



Note: Colors depicted are a reasonable representation though they may not be an exact match of the actual colors due to variances in processing and production. See your dealer for actual fabric and paint chip samples.

Carpet A
 Dinette B
 Sofa C
 Bedspread D

A	B	C	D



NEWPORT CHERRY



CHAMPAGNE SELECT



WHICH WAY WILL YOU GO?

We know you love choices. That's why our designers give you so many tempting options. From mild to wild, discriminating to daring, Monaco offers lots of fun ways to go.

VINTAGE MASTERS



RUMBA DEL SOL



RUMBA DEL SOL DECOR PACKAGE:

Our exclusive Rumba Del Sol package featuring fabrics by Tommy Bahama offers upgraded features throughout the coach. Because life on the road should always be beautiful.

- › Leather Pilot and Co-Pilot Seats
- › Upgraded Leather Furniture/Co-Pilot Side
- › New Style Living Room Pillows
- › Redesigned Freestanding Dinette Chairs
- › Unique Corian® Countertops
- › Newport Cherry Cabinetry with Inserts
- › Upgraded Backsplashes in both Kitchen and Bathroom
- › Redesigned Headboard
- › New Style Bedroom Pillows
- › Upgraded Bedroom Carpet
- › Wood Plank Flooring in Living Room, Kitchen and Bathroom, (2) Area Rugs Included
- › New Lighting Package
- › New Slide-Out Fascia Design
- › New Cabinet Hardware
- › New Interior and Exterior Colors
- › New Awning Colors



NEWPORT CHERRY



CHAMPAGNE SELECT



WHICH WAY WILL YOU GO?

We know you love choices. That's why our designers give you so many tempting options. From mild to wild, discriminating to daring, Monaco offers lots of fun ways to go.

VINTAGE MASTERS



RUMBA DEL SOL

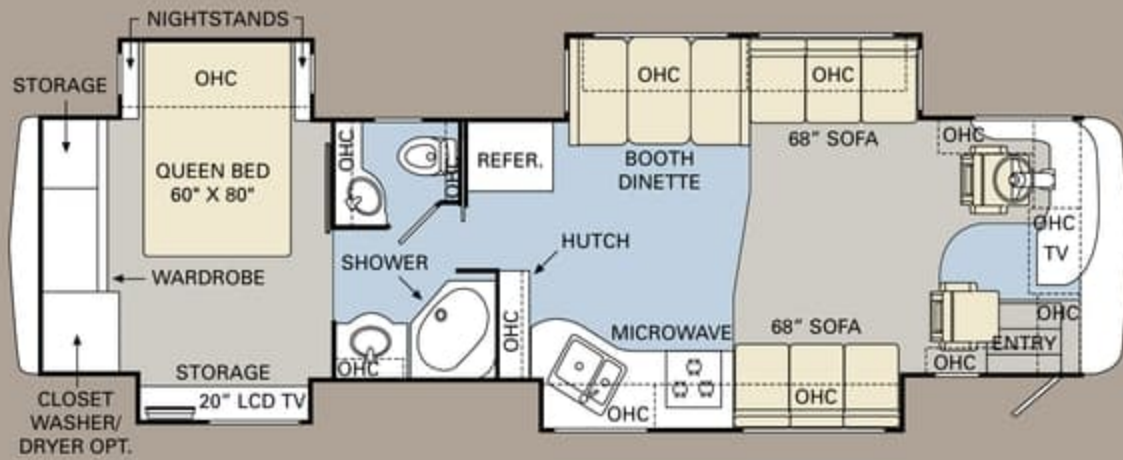


RUMBA DEL SOL DECOR PACKAGE:

Our exclusive Rumba Del Sol package featuring fabrics by Tommy Bahama offers upgraded features throughout the coach. Because life on the road should always be beautiful.

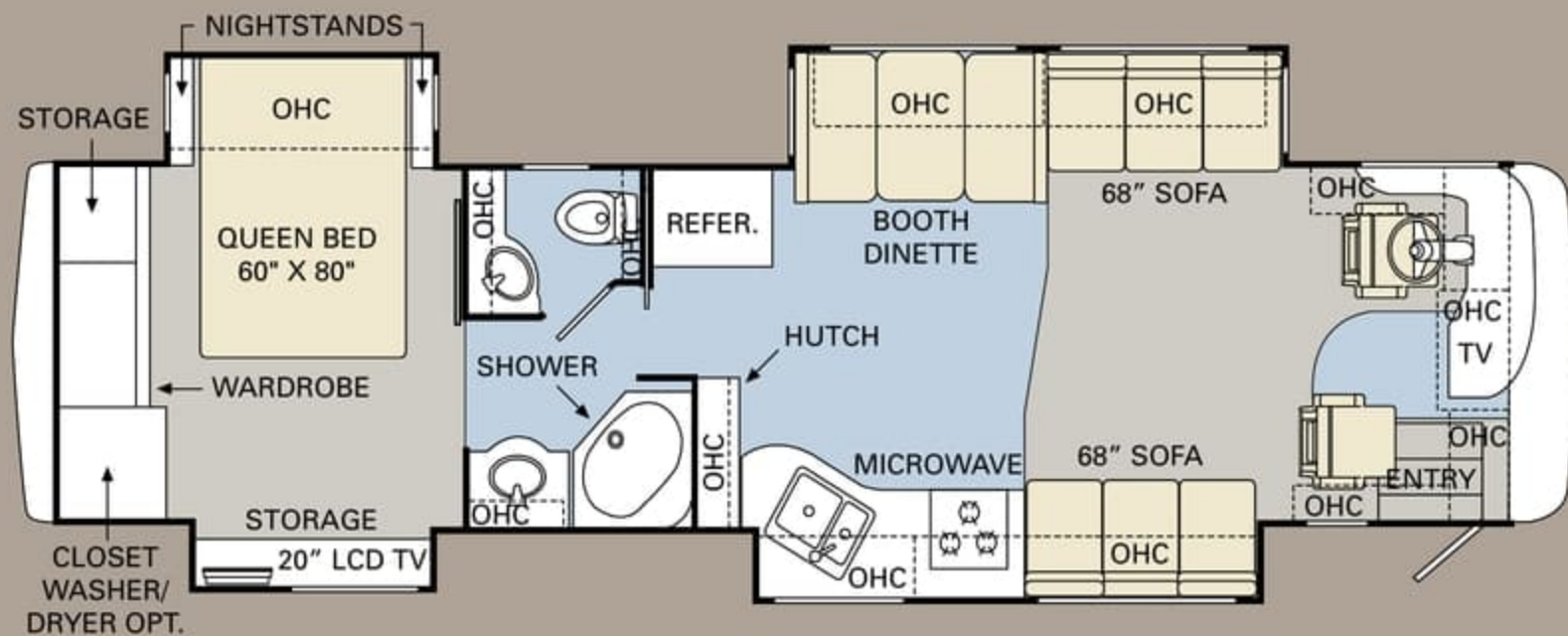
- › Leather Pilot and Co-Pilot Seats
- › Upgraded Leather Furniture/Co-Pilot Side
- › New Style Living Room Pillows
- › Redesigned Freestanding Dinette Chairs
- › Unique Corian® Countertops
- › Newport Cherry Cabinetry with Inserts
- › Upgraded Backsplashes in both Kitchen and Bathroom

- › Redesigned Headboard
- › New Style Bedroom Pillows
- › Upgraded Bedroom Carpet
- › Wood Plank Flooring in Living Room, Kitchen and Bathroom, (2) Area Rugs Included
- › New Lighting Package
- › New Slide-Out Fascia Design
- › New Cabinet Hardware
- › New Interior and Exterior Colors
- › New Awning Colors



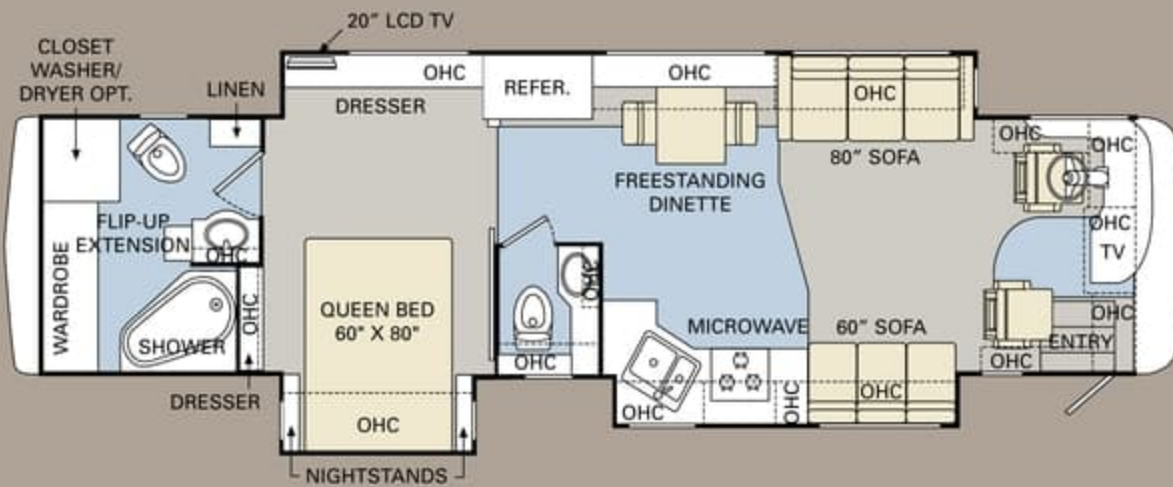
TILE CARPET

Ready to choose? The Knight is available in three large, livable floorplans from 38 to 40 feet. Two floorplans come with quad slide-outs, and the 40DFT features a PanaSuite™ full-wall slide for uninterrupted living space on the driver's side of the coach.



TILE CARPET

Ready to choose? The Knight is available in three large, livable floorplans from 38 to 40 feet. Two floorplans come with quad slide-outs, and the 40DFT features a PanaSuite™ full-wall slide for uninterrupted living space on the driver's side of the coach.

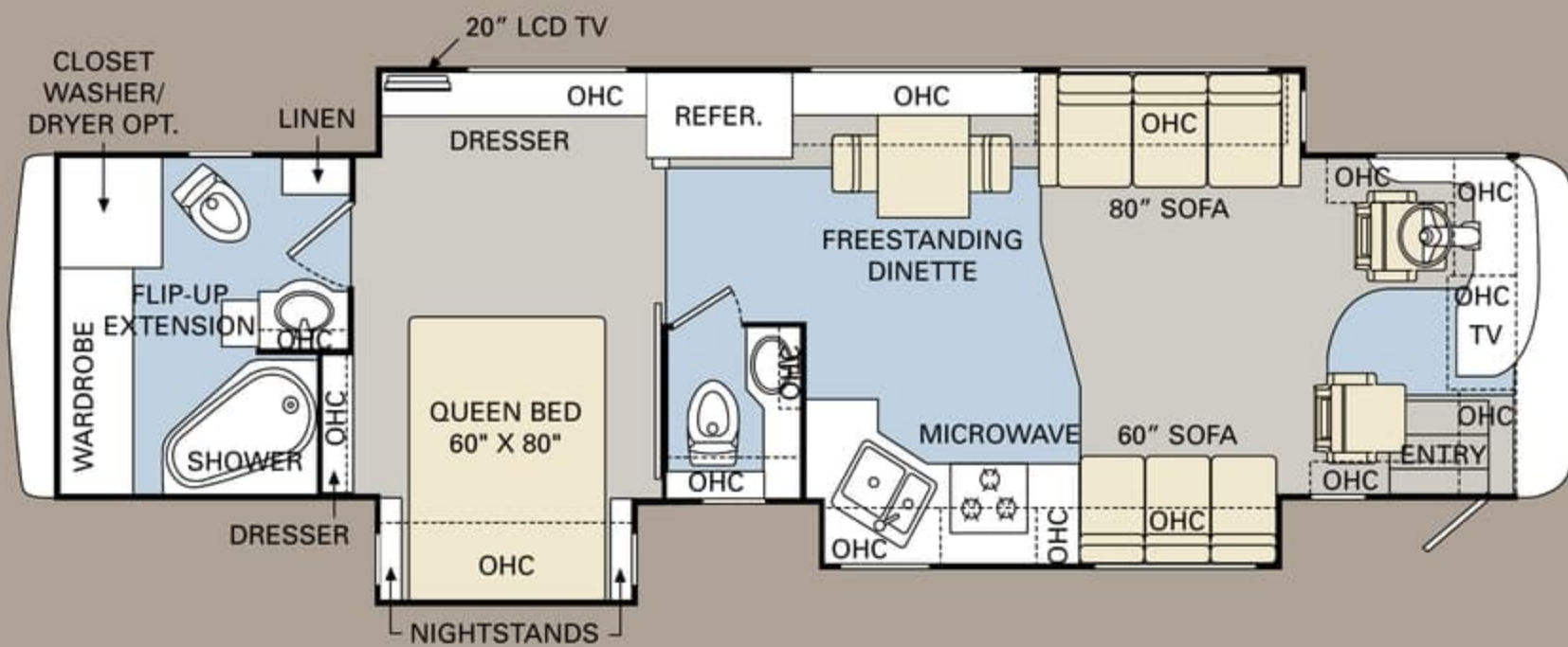


40DFT

ALL ROADS LEAD TO WWW.MONACOCOACH.COM.

Wherever the road takes you, you're never more than a click away from your friends at Monaco. Just go to www.monacocoach.com for all the latest product news, club dates and destinations, a dealer locator function, and factory tour information. You can also e-mail us directly through the site at any time.





40DFT

ALL ROADS LEAD TO WWW.MONACOCOACH.COM.

Wherever the road takes you, you're never more than a click away from your friends at Monaco. Just go to www.monacocoach.com for all the latest product news, club dates and destinations, a dealer locator function, and factory tour information. You can also e-mail us directly through the site at any time.





SPECIFICATIONS

Due to continuous product improvement, please see the website for the latest in standards and options, specifications, and technical data. *Go to www.monacocoach.com.*

	Weight Ratings (Lbs.)		Measurements		Tank Capacity (Gals.) ¹		Fuel Tank	
	Gross Vehicle	Gross Combined ²	Front Gross Axle	Rear Gross Axle	Water Heater	Gray Tank	Black Tank	Fresh Tank
38PDQ	33,000	43,000	13,000	20,000	10	62	40	100
40SKQ	33,000	43,000	13,000	20,000	10	62	40	100
40DFT	33,000	43,000	13,000	20,000	10	62	40	100

¹Towing capacity is limited by GCWR; your vehicle's towing capacity is the difference between the GCWR and the actual vehicle weight, including all water, fuel, passengers and cargo. Your towed vehicle should be equipped with auxiliary brakes if the weight of the towed vehicle exceeds 1,000 lbs. Consult your owner's manual for further towing information.

²All tank capacities are estimated based upon calculations provided by the tank manufacturers and represent approximate capacities. The actual "usable capacity" may be greater or less than the estimated capacities based upon fabrication and installation of the tanks.

³Actual filled LP capacity is 80% of listing due to safety shut-off required on tank.

The actual overall length of the recreational vehicle may differ from that indicated in the brochure due to variances in the manufacturing process and/or installed components. The actual length may be greater or less than that indicated. Due to the large variety of options and floorplan arrangements available to our customers, actual weights for each unit can differ significantly. Monaco Coach provides a weight sticker on each unit we produce which includes that unit's tank capacities and approximate weight. Consult your local Monaco Coach dealer for unit availability and further information. The information printed in this brochure reflects product design, fabrication, and component parts at the date of printing. The manufacturer reserves the right, at any time, to make changes in product design or material or component specifications as its sole option, without notice. This

includes the substitution of components of a different brand or trade name which will result in comparable performance. All information printed in this brochure is subject to change after the date of printing. Some features shown or mentioned in this brochure are optional and may only be available in selected floorplans. Photographs may show props or decorations that are not standard equipment on Monaco Coach models. Monaco Coach, the Monaco logo and its design, are registered trademarks. All other products and company names are trademarks and/or registered trademarks of their respective holders. While the color of the motorhome's exterior and the interior fabrics depicted in this sales brochure are fair and reasonable depictions, the colors depicted may not be an exact match of the actual colors because of the variances in photo-processing and variances caused by inserting the photographs

within the sales brochure. Due to product improvements, changes during the model year and/or transcription errors that may occur, information represented within this brochure may not be accurate at the time of your purchase. If certain information is significant to your purchasing decision, please confirm the information with your dealer prior to submitting your order. Component part and appliance manufacturers issue limited warranties covering those portions of the recreational vehicle not covered by the Limited Warranties issued by Monaco Coach Corporation. To learn which specific component parts and appliances are excluded from the Limited Warranties issued by Monaco Coach Corporation, please contact your selling dealership or Monaco Coach Corporation directly, or review the warranty packet inside the recreational vehicle.

BODY CONSTRUCTION

- › Alumaframe® Superstructure
- › Steel Cage Cockpit Construction
- › Peaked One-Piece Fiberglass Roof with Fiberglass Insulation
- › Panaview™ 1-Piece Front Windshield
- › Interior Height 84"
- › Front and Rear Molded Fiberglass Cap
- › One-Piece Generator Access Door
- › Electric Flush-Floor Stepwell Cover
- › Dual Head Power Controlled Heated Exterior Mirrors with Turn Indicator Lights (Black Arms with Chrome Head)

- › Side-Hinged Baggage Doors; All Door Locations with Redesigned Extrusion and Latch Locations
- › One-Piece Polyethylene Pass-Through Storage Compartment
- › Wheel Mud Flaps
- › Full-Length Mud Flap
- › 3M Film Front Mask
- › Deluxe Full-Body Paint
- › Roof Ladder
- › Undercoating

OPTIONS

- › Storage Bay Slide-Out Tray, Pass-Through
- › Slide-Out Battery Tray



SPECIFICATIONS

Due to continuous product improvement, please see the website for the latest in standards and options, specifications, and technical data. *Go to www.monacocoach.com.*

	Weight Ratings (Lbs.)		Measurements		Tank Capacity (Gal.) ²											
	Gross Vehicle	Gross Combined ¹	Front Gross Axle	Rear Gross Axle	Wheelbase	Overall Length	Overall Height (with A/C) (add 5" for satellite option)	Interior Height	Interior Width	Exterior Width	Water Heater	Gray Tank	Black Tank	Fresh Tank	LP Tank ³	Fuel Tank
38PDQ	33,000	43,000	13,000	20,000	237"	39' 5.5"	12' 6"	84"	94.5"	100.5	10	62	40	100	39	100
40SKQ	33,000	43,000	13,000	20,000	261"	41' 5.5"	12' 6"	84"	94.5"	100.5	10	62	40	100	39	100
40DFT	33,000	43,000	13,000	20,000	261"	41' 5.5"	12' 6"	84"	94.5"	100.5	10	62	40	100	39	100

¹Towing capacity is limited by GCWR; your vehicle's towing capacity is the difference between the GCWR and the actual vehicle weight, including all water, fuel, passengers and cargo. Your towed vehicle should be equipped with auxiliary brakes if the weight of the towed vehicle exceeds 1,000 lbs. Consult your owner's manual for further towing information.

²All tank capacities are estimated based upon calculations provided by the tank manufacturers and represent approximate capacities. The actual "usable capacity" may be greater or less than the estimated capacities based upon fabrication and installation of the tanks.

³Actual filled LP capacity is 80% of listing due to safety shut-off required on tank.

The actual overall length of the recreational vehicle may differ from that indicated in the brochure due to variances in the manufacturing process and/or installed components. The actual length may be greater or less than that indicated. Due to the large variety of options and floorplan arrangements available to our customers, actual weights for each unit can differ significantly. Monaco Coach provides a weight sticker on each unit we produce which includes that unit's tank capacities and approximate weight. Consult your local Monaco Coach dealer for unit availability and further information. The information printed in this brochure reflects product design, fabrication, and component parts at the date of printing. The manufacturer reserves the right, at any time, to make changes in product design or material or component specifications as its sole option, without notice. This

includes the substitution of components of a different brand or trade name which will result in comparable performance. All information printed in this brochure is subject to change after the date of printing. Some features shown or mentioned in this brochure are optional and may only be available in selected floorplans. Photographs may show props or decorations that are not standard equipment on Monaco Coach models. Monaco Coach, the Monaco logo and its design, are registered trademarks. All other products and company names are trademarks and/or registered trademarks of their respective holders. While the color of the motorhome's exterior and the interior fabrics depicted in this sales brochure are fair and reasonable depictions, the colors depicted may not be an exact match of the actual colors because of the variances in photo-processing and variances caused by inserting the photographs

within the sales brochure. Due to product improvements, changes during the model year and/or transcription errors that may occur, information represented within this brochure may not be accurate at the time of your purchase. If certain information is significant to your purchasing decision, please confirm the information with your dealer prior to submitting your order. Component part and appliance manufacturers issue limited warranties covering those portions of the recreational vehicle not covered by the Limited Warranties issued by Monaco Coach Corporation. To learn which specific component parts and appliances are excluded from the Limited Warranties issued by Monaco Coach Corporation, please contact your selling dealership or Monaco Coach Corporation directly, or review the warranty packet inside the recreational vehicle.

BODY CONSTRUCTION

- › Alumaframe® Superstructure
- › Steel Cage Cockpit Construction
- › Peaked One-Piece Fiberglass Roof with Fiberglass Insulation
- › Panaview™ 1-Piece Front Windshield
- › Interior Height 84"
- › Front and Rear Molded Fiberglass Cap
- › One-Piece Generator Access Door
- › Electric Flush-Floor Stepwell Cover
- › Dual Head Power Controlled Heated Exterior Mirrors with Turn Indicator Lights (Black Arms with Chrome Head)
- › Side-Hinged Baggage Doors; All Door Locations with Redesigned Extrusion and Latch Locations
- › One-Piece Polyethylene Pass-Through Storage Compartment
- › Wheel Mud Flaps
- › Full-Length Mud Flap
- › 3M Film Front Mask
- › Deluxe Full-Body Paint
- › Roof Ladder
- › Undercoating

OPTIONS

- › Storage Bay Slide-Out Tray, Pass-Through
- › Slide-Out Battery Tray



CHASSIS/ENGINE/SUSPENSION

- › Roadmaster Raised Rail Chassis RR8R
- › Cummins® ISC 360 Engine with Allison® 3000 MH 6-Speed World Transmission and Electronic Shifter
- › Engine Displacement: 8.3L/506 Cu. In.
- › Torque: 1,050 lbs./ft. Max. Net at 1,400 RPM
- › Aluminum Rear-Mounted Radiator with CAC Cooler
- › Dual Fuel Fill
- › 160 Amp Alternator
- › Rear Axle Ratio: 4:30-1
- › Radial Tires: 275/70R/22.5
- › Polished Aluminum Wheels
- › Cushion Air-Glide Suspension with Eight Outboard-Mounted Air Bags and Eight Shock Absorbers
- › Anti-Lock Braking System with Full Air Brake
- › Automatic Traction Control
- › Exhaust Brake
- › Auto Slack Adjusters
- › Prewire for Supplemental Braking System
- › Engine Block Heater
- › Automatic Leveling System (3 Point)
- › 10,000 Lb. Hitch Receiver with Dual Connector 4-Pin or 7-Pin

COCKPIT

- › Automotive Dash with Silver Graphite Metallic Instrumentation Panel
- › In-Dash AM/FM/CD Stereo Radio with Sirius-Ready Compatibility and Weather Band
- › Rear Vision System with Audio and Adjustable Camera
- › Adjustable Brake and Accelerator Pedals
- › Intermittent Windshield Wipers
- › 4-Spoke Steering Wheel with Horn Pad and Logo
- › Air Horns
- › Power Sunvisors with Integrated Motor
- › Ultraleather™ Six-Way Power Pilot Seat
- › Ultraleather™ Six-Way Power Co-Pilot Seat with Powered Footrest

OPTIONS

- › Pilot and Co-Pilot Pull-Down Sunshades
- › Interior Solar Privacy Sunscreens (Manual)
- › Sirius Radio Satellite System (Requires Subscription)
- › 3-Camera Rear Vision System with Audio and Adjustable Center Camera
- › GPS System
- › Message Center
- › Auxiliary Blower

APPLIANCES AND ACCESSORIES

- › Norcold® 12 Cu. Ft. 2-Way 4-Door Refrigerator with Ice Maker
- › High-Output 3-Sealed-Burner Cooktop without Oven
- › Spacesaver Convection Microwave with Touch Control
- › 32" Flatscreen LCD TV in Front Cockpit Overhead (N/A: 40SKQ)
- › 37" Flatscreen LCD TV in Living Area Hutch (40SKQ)
- › 20" LCD Color TV with Remote Control in Bedroom
- › TV Antenna
- › Home Theater System
- › Exterior Hook-Ups for DSS Dish and Cable
- › CB Prep
- › Digital Satellite System Prep
- › Interior Cable TV Hook-Up and Telephone Jacks
- › Washer/Dryer Prep

OPTIONS

- › High-Output 3-Sealed-Burner Range with Oven
- › Combination Washer/Dryer
- › Dometic Sidewise 14 Cu. Ft. 2-Way Refrigerator with Water and Ice Dispenser in the Door (40SKQ Only)
- › Stainless Steel Package (Includes Stainless Steel Refrigerator and Microwave)
- › Bedroom DVD Player
- › Central Vacuum
- › In-Motion Digital Satellite Dish System (Does Not Include Receiver)
- › Fireplace with Hardwood Frame Located under TV Living Room Area (40SKQ Only)
- › Exterior Entertainment Center 26" LCD TV/AM/FM/CD Radio with Two Speakers (N/A: 40SKQ)



CHASSIS/ENGINE/SUSPENSION

- › Roadmaster Raised Rail Chassis RR8R
- › Cummins® ISC 360 Engine with Allison® 3000 MH 6-Speed World Transmission and Electronic Shifter
- › Engine Displacement: 8.3L/506 Cu. In.
- › Torque: 1,050 lbs./ft. Max. Net at 1,400 RPM
- › Aluminum Rear-Mounted Radiator with CAC Cooler
- › Dual Fuel Fill
- › 160 Amp Alternator
- › Rear Axle Ratio: 4:30-1
- › Radial Tires: 275/70R/22.5
- › Polished Aluminum Wheels
- › Cushion Air-Glide Suspension with Eight Outboard-Mounted Air Bags and Eight Shock Absorbers
- › Anti-Lock Braking System with Full Air Brake
- › Automatic Traction Control
- › Exhaust Brake
- › Auto Slack Adjusters
- › Prewire for Supplemental Braking System
- › Engine Block Heater
- › Automatic Leveling System (3 Point)
- › 10,000 Lb. Hitch Receiver with Dual Connector 4-Pin or 7-Pin

COCKPIT

- › Automotive Dash with Silver Graphite Metallic Instrumentation Panel
- › In-Dash AM/FM/CD Stereo Radio with Sirius-Ready Compatibility and Weather Band
- › Rear Vision System with Audio and Adjustable Camera
- › Adjustable Brake and Accelerator Pedals
- › Intermittent Windshield Wipers
- › 4-Spoke Steering Wheel with Horn Pad and Logo
- › Air Horns
- › Power Sunvisors with Integrated Motor
- › Ultraleather™ Six-Way Power Pilot Seat
- › Ultraleather™ Six-Way Power Co-Pilot Seat with Powered Footrest

OPTIONS

- › Pilot and Co-Pilot Pull-Down Sunshades
- › Interior Solar Privacy Sunscreens (Manual)
- › Sirius Radio Satellite System (Requires Subscription)
- › 3-Camera Rear Vision System with Audio and Adjustable Center Camera
- › GPS System
- › Message Center
- › Auxiliary Blower

APPLIANCES AND ACCESSORIES

- › Norcold® 12 Cu. Ft. 2-Way 4-Door Refrigerator with Ice Maker
- › High-Output 3-Sealed-Burner Cooktop without Oven
- › Spacesaver Convection Microwave with Touch Control
- › 32" Flatscreen LCD TV in Front Cockpit Overhead (N/A: 40SKQ)
- › 37" Flatscreen LCD TV in Living Area Hutch (40SKQ)
- › 20" LCD Color TV with Remote Control in Bedroom
- › TV Antenna
- › Home Theater System
- › Exterior Hook-Ups for DSS Dish and Cable
- › CB Prep
- › Digital Satellite System Prep
- › Interior Cable TV Hook-Up and Telephone Jacks
- › Washer/Dryer Prep

OPTIONS

- › High-Output 3-Sealed-Burner Range with Oven
- › Combination Washer/Dryer
- › Dometic Sidewise 14 Cu. Ft. 2-Way Refrigerator with Water and Ice Dispenser in the Door (40SKQ Only)
- › Stainless Steel Package (Includes Stainless Steel Refrigerator and Microwave)
- › Bedroom DVD Player
- › Central Vacuum
- › In-Motion Digital Satellite Dish System (Does Not Include Receiver)
- › Fireplace with Hardwood Frame Located under TV Living Room Area (40SKQ Only)
- › Exterior Entertainment Center 26" LCD TV/AM/FM/CD Radio with Two Speakers (N/A: 40SKQ)

INTERIOR

- › Raised Panel Hardwood Cabinet Doors
- › Hardwood Cabinet End Panels
- › Refrigerator Raised Panel Hardwood Inserts
- › Self-Supporting Top-Hinged Overhead Storage Doors and Positive Catches on All Other Doors
- › Heavy-Duty Ball-Bearing Drawer Guides
- › Wood Cabinet Drawer Boxes
- › Metal Interior Grab Handle on Dash at Entry Door
- › Satin Nickel Finish Cabinetry Hardware and Bath Accessories
- › Polished Radius Solid Surface Kitchen Countertop with Stainless Steel Sink with Two Sink Covers
- › Solid Surface Radius Profile Bath Lavatory Countertop with Integrated Bowl
- › Flip-Up Countertop Extension for Lavatory in Rear Bathroom (40DFT Only)
- › All Other Countertops to be Laminated Tops with Solid Surface Edge
- › Kitchen Overhead Cabinets with Adjustable Shelf
- › Solid Surface Kitchen Galley and Bathroom Lavatory Backsplash with Decorative Glass Insert
- › Entryway Flooring Tile
- › Kitchen and Bath Tile Flooring
- › Textured Style Nylon Carpeting with Pad in Living Area and Bedroom
- › Soft Touch Padded Vinyl Ceiling
- › Hardwood Slide-Out Fascia with Decorative Corner Blocks and Center Block
- › TV Hutch Cabinet in Living Area with Decorative Glass (40SKQ Only)
- › Hall Cabinet (40SKQ Only)
- › Hardwood Raised Panel Bathroom Door
- › Crown Molding in Bedroom and Living Area on All Open Walls
- › Medicine Cabinet with Adjustable Shelves (N/A on Angled Cabinets)
- › Oversized Rear Wardrobe Closet with Deluxe Mirrored Door Frames Satin Nickel with Decorative Hardwood Header
- › Bedroom Wardrobe Slide-Out Foot of Bed
- › Decorative Headboard with Fabric Insert
- › Decorative Window Valances
- › Day/Night Pleated Blackout Shades in Living Area and Bedroom
- › Mini Blinds in Kitchen and Bathroom
- › Soil Repellant Protection on Living Room Fabrics

OPTIONS

- › Decors: Devonshire, Island Style, Vintage Masters, Rumba Del Sol
- › Full Tile in Living Room
- › Wood Choice: Newport Cherry, Champagne Select

FURNITURE

- › Queen Bed with Overhead Cabinet and Nightstands (60" x 80" Mattress)
- › Arched Back Wood Booth Dinette with Side-Sliding Dinette Tabletop (N/A; 40DFT)
- › Freestanding Dinette with Full-Length Wall Cabinet and Two Freestanding Chairs (40DFT)
- › Roadside: Fabric Easy Bed Sofa
- › Curbside: Fabric Easy Bed Sofa

OPTIONS

- › Queen Bed Select Comfort Air Mattress
- › Roadside: Fabric Hide-a-Bed Sofa with Air Mattress
- › Roadside: Wraparound Computer Desk with Ultraleather™ Euro-Recliner (38PDQ Only)
- › Roadside Ultraleather™ Sectional Booth Dinette Ensemble (40SKQ)
- › Curbside: Ultraleather™ Easy Bed Sofa
- › Curbside: Ultraleather™ Hide-A-Bed Sofa with Air Mattress (38PDQ Only)
- › Freestanding Dinette with Full-Length Wall Cabinet and Two Freestanding Chairs (38PDQ, 40SKQ)

ELECTRICAL SYSTEMS AND LIGHTS

- › 50 Amp 120V Distribution Panel and Manual Retracting Power Cord Reel
- › Energy Management System
- › 2,000 Watt Inverter
- › Onan® 8.0 kW QD Diesel Generator
- › Four 6V House Batteries
- › Two 12V Heavy-Duty Chassis Batteries
- › Battery Disconnect Switch at Front Door
- › Porch Light and Exterior Step Light on Same Switch
- › Exterior Power Entry Step with Light
- › Interior Stepwell Entry Step Lights
- › Lights in Outside Storage Compartments
- › 120V Receptacles in Outside Storage Compartment
- › Underhood Utility Light
- › Convenience Center in Hallway
- › Decorative Lighting

OPTIONS

- › Exterior Tank Monitor Gauge in Wet Bay

INTERIOR

- › Raised Panel Hardwood Cabinet Doors
- › Hardwood Cabinet End Panels
- › Refrigerator Raised Panel Hardwood Inserts
- › Self-Supporting Top-Hinged Overhead Storage Doors and Positive Catches on All Other Doors
- › Heavy-Duty Ball-Bearing Drawer Guides
- › Wood Cabinet Drawer Boxes
- › Metal Interior Grab Handle on Dash at Entry Door
- › Satin Nickel Finish Cabinetry Hardware and Bath Accessories
- › Polished Radius Solid Surface Kitchen Countertop with Stainless Steel Sink with Two Sink Covers
- › Solid Surface Radius Profile Bath Lavatory Countertop with Integrated Bowl
- › Flip-Up Countertop Extension for Lavatory in Rear Bathroom (40DFT Only)
- › All Other Countertops to be Laminated Tops with Solid Surface Edge
- › Kitchen Overhead Cabinets with Adjustable Shelf
- › Solid Surface Kitchen Galley and Bathroom Lavatory Backsplash with Decorative Glass Insert
- › Entryway Flooring Tile
- › Kitchen and Bath Tile Flooring
- › Textured Style Nylon Carpeting with Pad in Living Area and Bedroom
- › Soft Touch Padded Vinyl Ceiling
- › Hardwood Slide-Out Fascia with Decorative Corner Blocks and Center Block
- › TV Hutch Cabinet in Living Area with Decorative Glass (40SKQ Only)
- › Hall Cabinet (40SKQ Only)
- › Hardwood Raised Panel Bathroom Door
- › Crown Molding in Bedroom and Living Area on All Open Walls
- › Medicine Cabinet with Adjustable Shelves (N/A on Angled Cabinets)
- › Oversized Rear Wardrobe Closet with Deluxe Mirrored Door Frames Satin Nickel with Decorative Hardwood Header
- › Bedroom Wardrobe Slide-Out Foot of Bed
- › Decorative Headboard with Fabric Insert
- › Decorative Window Valances
- › Day/Night Pleated Blackout Shades in Living Area and Bedroom
- › Mini Blinds in Kitchen and Bathroom
- › Soil Repellant Protection on Living Room Fabrics

OPTIONS

- › Decors: Devonshire, Island Style, Vintage Masters, Rumba Del Sol
- › Full Tile in Living Room
- › Wood Choice: Newport Cherry, Champagne Select

FURNITURE

- › Queen Bed with Overhead Cabinet and Nightstands (60" x 80" Mattress)
- › Arched Back Wood Booth Dinette with Side-Sliding Dinette Tabletop (N/A: 40DFT)
- › Freestanding Dinette with Full-Length Wall Cabinet and Two Freestanding Chairs (40DFT)
- › Roadside: Fabric Easy Bed Sofa
- › Curbside: Fabric Easy Bed Sofa
- › Queen Bed Select Comfort Air Mattress
- › Roadside: Fabric Hide-a-Bed Sofa with Air Mattress
- › Roadside: Wraparound Computer Desk with Ultraleather™ Euro-Recliner (38PDQ Only)
- › Roadside Ultraleather™ Sectional Booth Dinette Ensemble (40SKQ)
- › Curbside: Ultraleather™ Easy Bed Sofa
- › Curbside: Ultraleather™ Hide-A-Bed Sofa with Air Mattress (38PDQ Only)
- › Freestanding Dinette with Full-Length Wall Cabinet and Two Freestanding Chairs (38PDQ, 40SKQ)

OPTIONS

OPTIONS

ELECTRICAL SYSTEMS AND LIGHTS

- › 50 Amp 120V Distribution Panel and Manual Retracting Power Cord Reel
- › Energy Management System
- › 2,000 Watt Inverter
- › Onan® 8.0 kW QD Diesel Generator
- › Four 6V House Batteries
- › Two 12V Heavy-Duty Chassis Batteries
- › Battery Disconnect Switch at Front Door
- › Porch Light and Exterior Step Light on Same Switch
- › Exterior Power Entry Step with Light
- › Interior Stepwell Entry Step Lights
- › Lights in Outside Storage Compartments
- › 120V Receptacles in Outside Storage Compartment
- › Underhood Utility Light
- › Convenience Center in Hallway
- › Decorative Lighting
- › Exterior Tank Monitor Gauge in Wet Bay



PLUMBING AND LP SYSTEMS

- › Single Lever Satin Nickel Faucet with Pullout Sprayer
- › Bath Lavatory Faucet
- › Central Water Filtration System
- › Demand Water System and Water Pump
- › Water Pump Switch in Convenience Center, Kitchen Galley and Service Bay Area
- › 10-Gallon LP Gas/Electric Water Heater with Electronic Ignition, DSI
- › Winterization Valving System
- › Water Heater Bypass Valving
- › China Toilet Electronic Silent Plus (N/A: 38 PDQ)
- › China Toilet (Aqua-Magic) (38 PDQ) and Front Toilet (40DFT)
- › No-Fuss Flush Holding Tank Rinsing System
- › Insulated Systems Compartment with Easy Access to Hook-Up
- › Shower inside Wet Bay with Hot/Cold Water
- › Soap Dispenser inside Utility Bay
- › Gravity and Pressurized Water Fill
- › Contained Storage Area for Sewer Hose (N/A with RV Sani-Con System Option)
- › One-Piece Neo-Angled Shower with Obscured Glass Door (N/A: 40DFT)
- › One-Piece Pear-Shaped Tub with Obscured Glass Door (40 DFT)
- › Satin Nickel Shower Faucet with Slide Bar and Shut-Off Valve at Shower Head

OPTIONS

- › RV Sani-Con 1 System, Holding Tank Flush System (This Option Replaces Contained Storage Area for Sewer Hose)
- › Power Water Hose Reel
- › Neo-Angled Bathtub (N/A: 40DFT)

HEATING, VENTS AND AIR CONDITIONING

- › Dual 13.5M BTU Roof Air Conditioner with Ducted Air, Heat Pumps and Digital Thermostat Control
- › Electronic Ignition Furnace (31M and 20M BTU)
- › Electronic AC/Heat Climate Control System
- › Kitchen Powered 12V Attic Fan with Wall Control of Automatic Dome and Fan Power
- › Bath Powered 12V Attic Fan with Wall Control of Automatic Dome and Fan Power
- › 12V Heater in Wet Bay

OPTIONS

- › Ceiling Fan in Bedroom (N/A: 38PDQ)
- › Dual 15M BTU Roof Air Conditioner with Ducted Air, Heat Pumps and Digital Thermostat Control

WINDOWS, DOORS AND AWNINGS

- › Radius Flush-Mounted Dual Pane Safety Glass Dark Tinted Slider Windows
- › Automatic Front Door Awning
- › Front Entry Door with Removable Screen and Anti-Skid Steps
- › Automatic Patio Awning
- › Topper Slide-Out Awnings Living Area and Bedroom with Metal Covers
- › Window Awnings on All Slide-Out House Windows except Kitchen Windows and Slide-Out Windows under Patio Awning
- › Tinted Skylight in Bathroom with Protecta Glaze

OPTIONS

- › Keyless Entry (Key Fob Only)

SAFETY

- › Fire Extinguisher (10BC)
- › Deadbolt Lock on Entrance Door
- › 120V GFI Protected Circuit Kitchen, Bath and Exterior
- › LP Gas Detector
- › Smoke Detector
- › Carbon Monoxide Detector
- › Driver and Passenger Three-Point Seatbelts (Wall-Mounted)
- › Third Brake Safety Light
- › Egress Window (1 in Bedroom)



PLUMBING AND LP SYSTEMS

- › Single Lever Satin Nickel Faucet with Pullout Sprayer
- › Bath Lavatory Faucet
- › Central Water Filtration System
- › Demand Water System and Water Pump
- › Water Pump Switch in Convenience Center, Kitchen Galley and Service Bay Area
- › 10-Gallon LP Gas/Electric Water Heater with Electronic Ignition, DSI
- › Winterization Valving System
- › Water Heater Bypass Valving
- › China Toilet Electronic Silent Plus (N/A: 38 PDQ)
- › China Toilet (Aqua-Magic) (38 PDQ) and Front Toilet (40DFT)
- › No-Fuss Flush Holding Tank Rinsing System
- › Insulated Systems Compartment with Easy Access to Hook-Up
- › Shower inside Wet Bay with Hot/Cold Water
- › Soap Dispenser inside Utility Bay
- › Gravity and Pressurized Water Fill
- › Contained Storage Area for Sewer Hose (N/A with RV Sani-Con System Option)
- › One-Piece Neo-Angled Shower with Obscured Glass Door (N/A: 40DFT)
- › One-Piece Pear-Shaped Tub with Obscured Glass Door (40 DFT)
- › Satin Nickel Shower Faucet with Slide Bar and Shut-Off Valve at Shower Head

OPTIONS

- › RV Sani-Con 1 System, Holding Tank Flush System (This Option Replaces Contained Storage Area for Sewer Hose)
- › Power Water Hose Reel
- › Neo-Angled Bathtub (N/A: 40DFT)

HEATING, VENTS AND AIR CONDITIONING

- › Dual 13.5M BTU Roof Air Conditioner with Ducted Air, Heat Pumps and Digital Thermostat Control
- › Electronic Ignition Furnace (31M and 20M BTU)
- › Electronic AC/Heat Climate Control System
- › Kitchen Powered 12V Attic Fan with Wall Control of Automatic Dome and Fan Power
- › Bath Powered 12V Attic Fan with Wall Control of Automatic Dome and Fan Power
- › 12V Heater in Wet Bay

OPTIONS

- › Ceiling Fan in Bedroom (N/A: 38PDQ)
- › Dual 15M BTU Roof Air Conditioner with Ducted Air, Heat Pumps and Digital Thermostat Control

WINDOWS, DOORS AND AWNINGS

- › Radius Flush-Mounted Dual Pane Safety Glass Dark Tinted Slider Windows
- › Automatic Front Door Awning
- › Front Entry Door with Removable Screen and Anti-Skid Steps
- › Automatic Patio Awning
- › Topper Slide-Out Awnings Living Area and Bedroom with Metal Covers
- › Window Awnings on All Slide-Out House Windows except Kitchen Windows and Slide-Out Windows under Patio Awning
- › Tinted Skylight in Bathroom with Protecta Glaze

OPTIONS

- › Keyless Entry (Key Fob Only)

SAFETY

- › Fire Extinguisher (10BC)
- › Deadbolt Lock on Entrance Door
- › 120V GFI Protected Circuit Kitchen, Bath and Exterior
- › LP Gas Detector
- › Smoke Detector
- › Carbon Monoxide Detector
- › Driver and Passenger Three-Point Seatbelts (Wall-Mounted)
- › Third Brake Safety Light
- › Egress Window (1 in Bedroom)



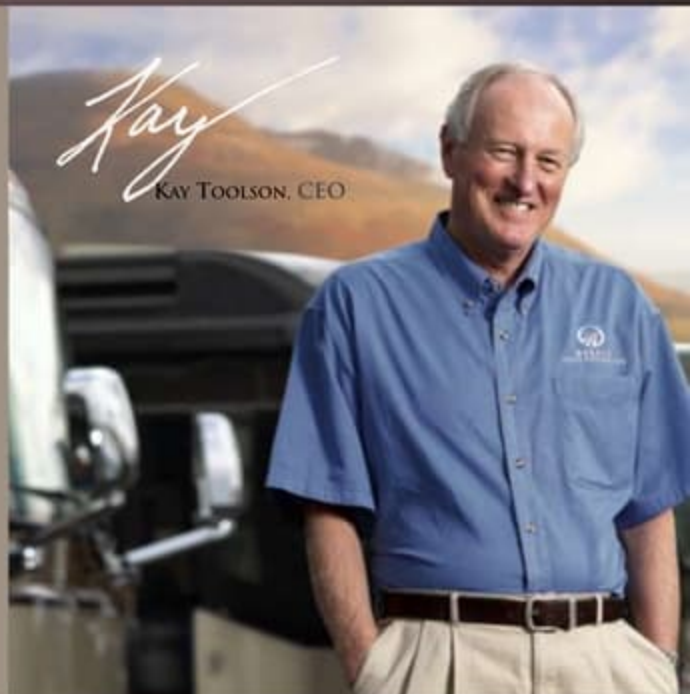
08

KNIGHT®

BEING DIFFERENT MAKES ALL THE DIFFERENCE.

At Monaco, we always strive to be the best. And that means thinking outside the box. Giving you more of what you want in an RV. Like our exclusive Roadmaster chassis. Three factory-owned service centers. And programs like Monaco Financial Services and 24/7 roadside assistance. No other manufacturer can match Monaco's offerings. No one even comes close. Why not discover the difference for yourself? Go Monaco.

*"No other manufacturer can match
Monaco's offerings. No one even comes close."*



www.monacodifferent.com | 877-252-4666

DEALER:



MONACO™

DRIVING YOUR DREAM.

91320 Coburg Industrial Way, Coburg, OR 97408 | 800-634-0855

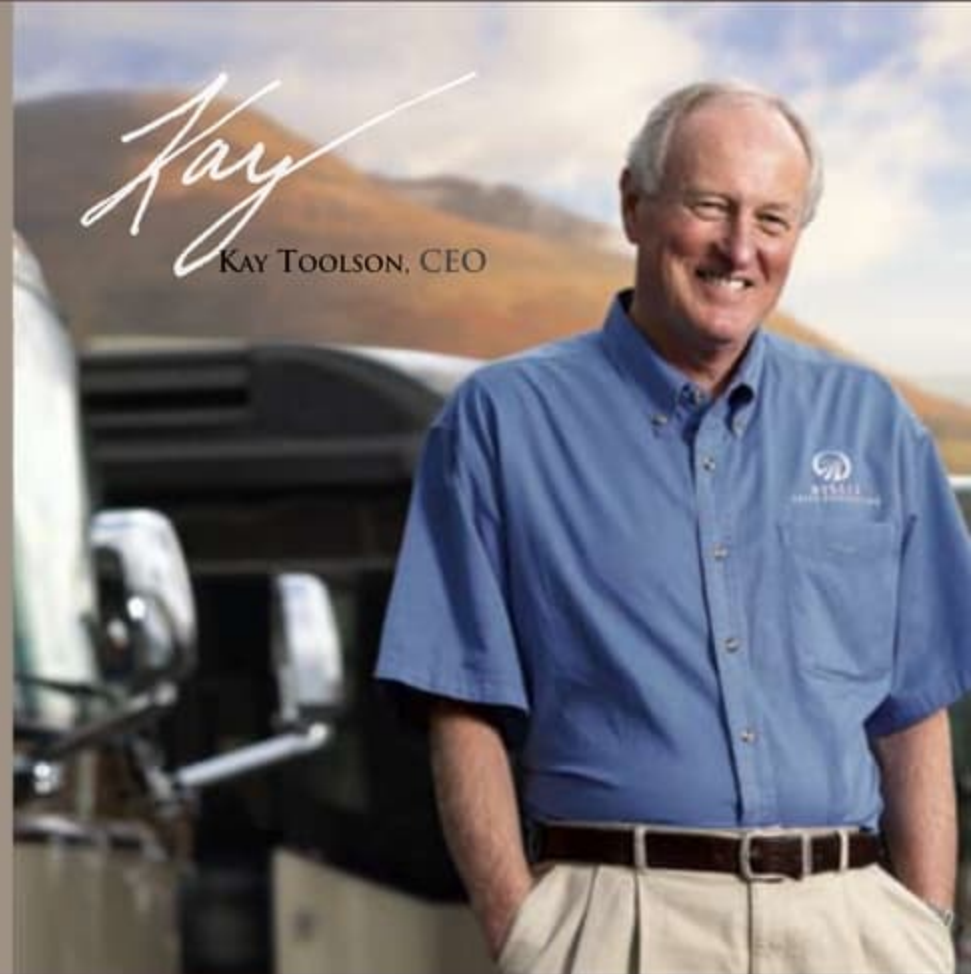
www.monacocoach.com

Monaco Coach Corporation is traded on the NYSE under the listing MNC. | 1007 BPN: 890M30

BEING DIFFERENT MAKES ALL THE DIFFERENCE.

At Monaco, we always strive to be the best. And that means thinking outside the box. Giving you more of what you want in an RV. Like our exclusive Roadmaster chassis. Three factory-owned service centers. And programs like Monaco Financial Services and 24/7 roadside assistance. No other manufacturer can match Monaco's offerings. No one even comes close. Why not discover the difference for yourself? Go Monaco.

“No other manufacturer can match Monaco's offerings. No one even comes close.”



www.monacodifferent.com | 877-252-4666

DEALER:



MONACO®

DRIVING YOUR DREAM.

91320 Coburg Industrial Way, Coburg, OR 97408 | 800 634-0855

www.monacocoach.com