



MONACO®

DRIVING YOUR DREAM.

SIGNATURE SERIES

 | 08





DRIVING YOUR DREAM.

SIGNATURE SERIES

 | 08



SIGNATURE SERIES



LUXURY. INNOVATION. HAPPY TRAVELERS. IT ALL SAYS MONACO.

Wherever you travel across America, it's easy to spot the Monaco owners. They're the ones with the smug, happy grins on their faces. And who could blame them? When you own a Monaco, you own the best. The best in luxury, performance, safety, technology and comfort. It's all here. And it's all yours for the taking. Come on, freedom lovers. Make your move to Monaco luxury. After all, you already know how to grin.

SIGNATURE SERIES



LUXURY. INNOVATION. HAPPY TRAVELERS. IT ALL SAYS MONACO.

Wherever you travel across America, it's easy to spot the Monaco owners. They're the ones with the smug, happy grins on their faces. And who could blame them? When you own a Monaco, you own the best. The best in luxury, performance, safety, technology and comfort. It's all here. And it's all yours for the taking. Come on, freedom lovers. Make your move to Monaco luxury. After all, you already know how to grin.



MONACO®

DRIVING YOUR DREAM.

SMART, FRESH DESIGN.



SIGNATURE SELECTIONS.

We asked ourselves, how could we possibly improve upon a coach that's already off-the-charts magnificent? Well, it took some doing. But here are a few new luxuries we think you're going to love.

- 5-color exterior graphics with fades
- SEE-Vision security cameras
- 52" LCD TV (Buckingham IV)
- KVH R5 in-motion digital satellite system
- 17 cu. ft. four-door refrigerator with raised panel doors
- High-gloss Corian® countertops throughout



MONACO®

DRIVING YOUR DREAM.

SMART, FRESH DESIGN.



SIGNATURE SELECTIONS.

We asked ourselves, how could we possibly improve upon a coach that's already off-the-charts magnificent? Well, it took some doing. But here are a few new luxuries we think you're going to love.

- 5-color exterior graphics with fades
- SEE-Vision security cameras
- 52" LCD TV (Buckingham IV)
- KVH R5 in-motion digital satellite system
- 17 cu. ft. four-door refrigerator with raised panel doors
- High-gloss Corian® countertops throughout



MEET YOUR SIGNIFICANT OTHER.





MEET YOUR SIGNIFICANT OTHER.





BUCKINGHAM IV | NATURAL CHERRY | RALPH LAUREN WINDERMERE

SIGNATURE SERIES INTERIOR



If a motorcoach could be your one true love, the 2008 Signature Series would be it. It has all the qualities you're looking for in the perfect road mate. Good looks (deluxe full-body paint with fades). Strength (big 525 HP diesel engine). Compassion (soft leather furnishings). Great communication skills (in-motion digital satellite system).... Well, you get the idea.

Everywhere you look on the Signature Series, you'll find reasons to fall in love. From the radiused ceiling design to the new high-gloss Corian® countertops, from the 52" LCD television (Buckingham IV) to the Bose® sound system, this coach has everything you've always longed for. And more.

CENTRAL VACUUM SYSTEM. Oh, you're going to love this option. It's a central vacuum system with toe kick vacuum in the pantry base. Just kick the switch, and swept-up dirt is automatically whisked away. There's no bulky canister or upright to lug around.

GALLEY. The galley is as big and bountiful as they come. With top-of-the-line appliances, high-gloss tile floors, a ceramic tile backsplash, and high-gloss Corian® everywhere — on countertops, covers, cutting boards, even windowsills. A central water purifier and Insta-Hot® water system come standard.

LEGLESS SIDE-SLIDE DINETTE. Extra guests for dinner? Simply slide the dinette table along the wall to allow more seating space on either side. Power Vienna shades help set the mood.





BUCKINGHAM IV | NATURAL CHERRY | RALPH LAUREN WINDERMERE

SIGNATURE SERIES INTERIOR



If a motorcoach could be your one true love, the 2008 Signature Series would be it. It has all the qualities you're looking for in the perfect road mate. Good looks (deluxe full-body paint with fades). Strength (big 525 HP diesel engine). Compassion (soft leather furnishings). Great communication skills (in-motion digital satellite system).... Well, you get the idea.

Everywhere you look on the Signature Series, you'll find reasons to fall in love. From the radiused ceiling design to the new high-gloss Corian® countertops, from the 52" LCD television (Buckingham IV) to the Bose® sound system, this coach has everything you've always longed for. And more.

CENTRAL VACUUM SYSTEM. Oh, you're going to love this option. It's a central vacuum system with toe kick vacuum in the pantry base. Just kick the switch, and swept-up dirt is automatically whisked away. There's no bulky canister or upright to lug around.

GALLEY. The galley is as big and bountiful as they come. With top-of-the-line appliances, high-gloss tile floors, a ceramic tile backsplash, and high-gloss Corian® everywhere — on countertops, covers, cutting boards, even windowsills. A central water purifier and Insta-Hot® water system come standard.

LEGLESS SIDE-SLIDE DINETTE. Extra guests for dinner? Simply slide the dinette table along the wall to allow more seating space on either side. Power Vienna shades help set the mood.





THE BEST DREAM OF ALL IS OWNING IT.



THE BEST DREAM OF ALL IS OWNING IT.



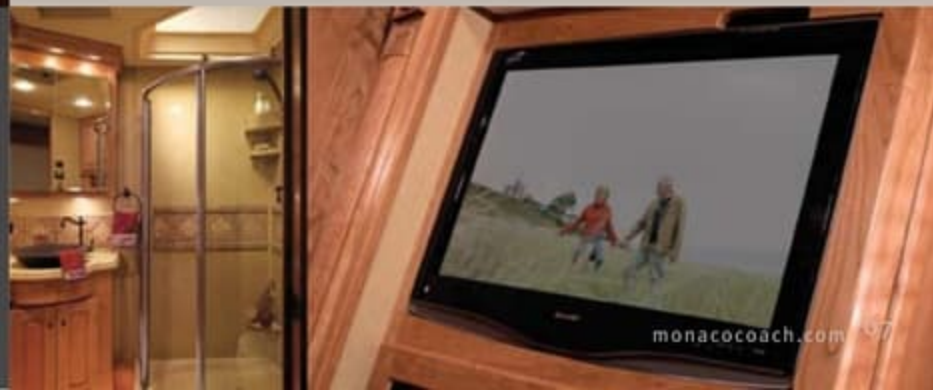
With a bedroom this lovely awaiting you every night, you're going to sleep very well indeed. Just smile, and take in all the luxuries. The 32" LCD television with DVD player. The radiused ceiling design. The dresser with raised panel drawer faces. Even the built-in clothes hamper.

Of course, at the center of it all is our stately queen bed (or optional king). It features a premium quality, pillowtop-hinged mattress flanked by Corian®-topped nightstands. If you prefer a little more (or less) firmness for your backside, try the optional air mattress with digital remote. Just dial in your level of comfort, and you're off to dreamland.

BATHROOM. Here's your private oasis on a hot summer's day. The bath features a large Corian® shower with tile accents and shower caddy, an integrated sink with ceramic tile backsplash, high-gloss tile floors, and generous storage space. For even more privacy, choose the Cambridge IV floorplan with a half bath off the kitchen and an enormous full bath at the back of the coach.

32" LCD TELEVISION. We wouldn't send you off to bed with just any television. Ours is a spectacular 32 inches of liquid crystal glory. And with the in-motion digital satellite system, you'll get coast-to-coast clarity on all your favorite TV shows. Oh, and don't forget the built-in DVD player. We certainly didn't.

BUCKINGHAM IV | NATURAL CHERRY | RALPH LAUREN WINDERMERE





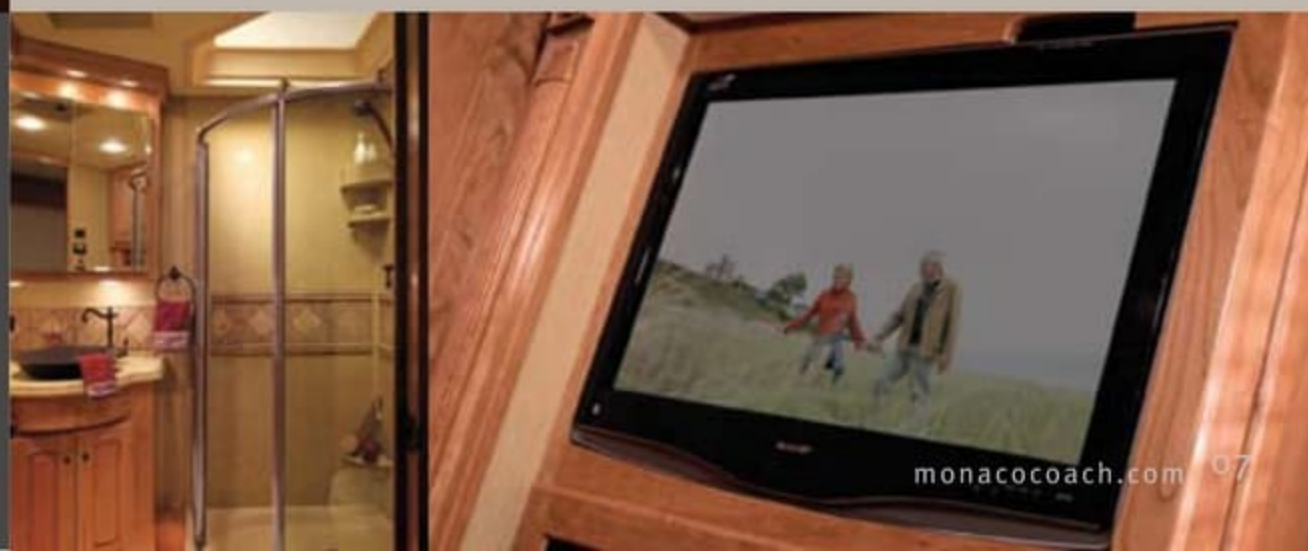
With a bedroom this lovely awaiting you every night, you're going to sleep very well indeed. Just smile, and take in all the luxuries. The 32" LCD television with DVD player. The radiused ceiling design. The dresser with raised panel drawer faces. Even the built-in clothes hamper.

Of course, at the center of it all is our stately queen bed (or optional king). It features a premium quality, pillowtop-hinged mattress flanked by Corian®-topped nightstands. If you prefer a little more (or less) firmness for your backside, try the optional air mattress with digital remote. Just dial in your level of comfort, and you're off to dreamland.

BATHROOM. Here's your private oasis on a hot summer's day. The bath features a large Corian® shower with tile accents and shower caddy, an integrated sink with ceramic tile backsplash, high-gloss tile floors, and generous storage space. For even more privacy, choose the Cambridge IV floorplan with a half bath off the kitchen and an enormous full bath at the back of the coach.

32" LCD TELEVISION. We wouldn't send you off to bed with just any television. Ours is a spectacular 32 inches of liquid crystal glory. And with the in-motion digital satellite system, you'll get coast-to-coast clarity on all your favorite TV shows. Oh, and don't forget the built-in DVD player. We certainly didn't.

BUCKINGHAM IV | NATURAL CHERRY | RALPH LAUREN WINDERMERE



It all comes down to this. You, the road, and 525 thundering horses at your command. It's a lot of power (even more with the optional 600 HP engine). But the Signature Series makes it easy to handle — with automatic traction control, air disc brakes with ABS, full-cushion air glide suspension, and of course, our Roadmaster semi-monocoque chassis for incomparable handling.

And speaking of power, how do you feel about power pilot seats, power window blinds, power sunvisors, and a power driver's window? Ahhh yes, we thought you'd approve. So climb aboard. You're about to take the ultimate power trip.

PASS-THROUGH STORAGE. You won't believe all the gear that fits in our lined, pass-through storage bays. For even easier loading and unloading, try the optional electric slide-out trays.

LEATHER PILOT SEATS. Collapse into one of our lush leather pilot seats, and you'll know the meaning of true indulgence. Both seats come with six-way power, heat, adjustable armrests, and electric headrests. The co-pilot seat also has a power footrest and electric sliding seat cushion. Why, you may never get up again.



It all comes down to this. You, the road, and 525 thundering horses at your command. It's a lot of power (even more with the optional 600 HP engine). But the Signature Series makes it easy to handle — with automatic traction control, air disc brakes with ABS, full-cushion air glide suspension, and of course, our Roadmaster semi-monocoque chassis for incomparable handling.

And speaking of power, how do you feel about power pilot seats, power window blinds, power sunvisors, and a power driver's window? Ahhh yes, we thought you'd approve. So climb aboard. You're about to take the ultimate power trip.

PASS-THROUGH STORAGE. You won't believe all the gear that fits in our lined, pass-through storage bays. For even easier loading and unloading, try the optional electric slide-out trays.

LEATHER PILOT SEATS. Collapse into one of our lush leather pilot seats, and you'll know the meaning of true indulgence. Both seats come with six-way power, heat, adjustable armrests, and electric headrests. The co-pilot seat also has a power footrest and electric sliding seat cushion. Why, you may never get up again.



SIGNATURE SERIES
COCKPIT/EXTERIOR



BUCKINGHAM IV | NATURAL CHERRY | RALPH LAUREN WINDERMERE

LET THE POWER GO TO YOUR HEAD.

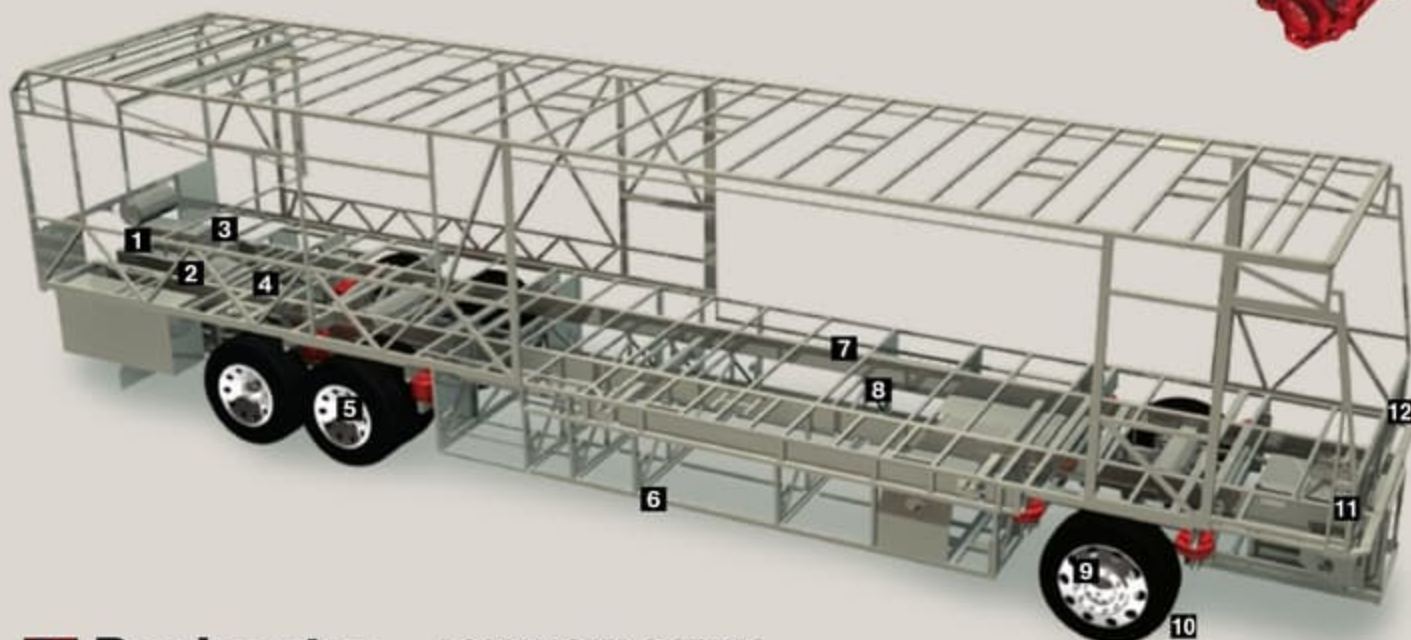
SIGNATURE SERIES
COCKPIT/EXTERIOR



BUCKINGHAM IV | NATURAL CHERRY | RALPH LAUREN WINDERMERE

LET THE POWER GO TO YOUR HEAD.

Signature Series offers the gutsy power of a Cummins® ISX 525 HP (or optional 600 HP) engine with unbeatable torque at the RPM where you need it most.



ROADMASTER S-SERIES SEMI-MONOCOQUE CHASSIS

1 10,000 lb. hitch receiver offers powerful towing capacity with 7/4-way trailer plug. Prewired for supplemental braking system that works with your tow vehicle.

2 The three-point engine mounting system lowers the coach's center of gravity and reduces the amount of vibration that reaches the coach. The mounting also makes the engine easier to service by allowing the engine to be easily lowered through the bottom of the coach.

3 Cummins® ISX 525 HP (or optional 600 HP) engine. The highest power-to-weight ratio in its class. And the patented Variable Geometry Turbocharger (VG Turbo) gives you peak performance at every RPM.

4 Allison® 4000 MH 6-Speed Transmission for smooth shifting; our exclusive use of synthetic transmission fluid allows for up to three-year maintenance intervals.

5 Full-Cushion Air Glide suspension system positions ten Bilstein® shocks and ten air bags, eight of which are outboard mounted with auto-leveling for greater stability, a smoother ride and the best handling in its class.

Unique three-degree rear axle tilt perfectly aligns the engine, transmission and differential, minimizing stress on the drivetrain and reducing noise in the coach.



Automatic Traction Control (ATC) eliminates wheel slippage in slick conditions and heightens control.

Tag axle lifts for added maneuverability in tight spots.

6 Basement structure rust inhibitor. To prevent corrosion, the basement storage area is constructed with pre-primed steel with rust-inhibiting paint.

7 Full-length frame rails fabricated from 3" by 8" by 1/4" 60,000 PSI structural steel; rails are spaced 44" on center for a wider stance and unmatched strength.

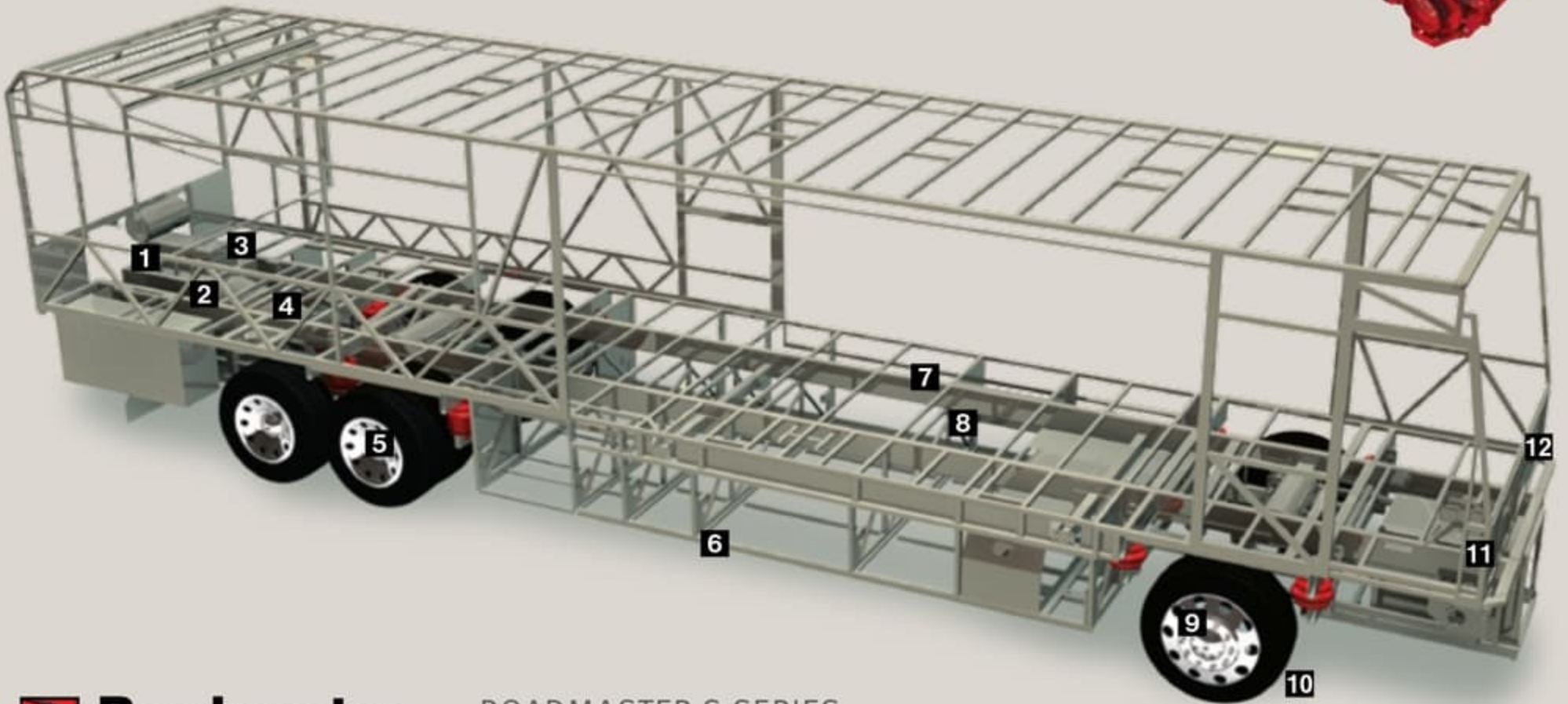
8 The semi-monocoque design, with trussed superstructure, distributes stress evenly throughout the entire chassis and adds strength to sidewalls and bays.

MAY WE BUILD YOU A CHASSIS?

Did you know that every Roadmaster chassis is custom designed and built for the Monaco coach that will ride on it? It's a novel idea, but our owners seem to like it. And it pays off — in better performance, safety and reliability. Owners also like the fact that Roadmaster, a division of

Monaco Coach Corporation, only does one thing: They build chassis for motorhomes. Not trucks. Not buses. Just motorhomes. So naturally, they do it better. No wonder Roadmaster is the leading high-end diesel chassis manufacturer in America.

Signature Series offers the gutsy power of a Cummins® ISX 525 HP (or optional 600 HP) engine with unbeatable torque at the RPM where you need it most.



ROADMASTER S-SERIES SEMI-MONOCOQUE CHASSIS

1 10,000 lb. hitch receiver offers powerful towing capacity with 7/4-way trailer plug. Prewired for supplemental braking system that works with your tow vehicle.

2 The three-point engine mounting system lowers the coach's center of gravity and reduces the amount of vibration that reaches the coach. The mounting also makes the engine easier to service by allowing the engine to be easily lowered through the bottom of the coach.

3 Cummins® ISX 525 HP (or optional 600 HP) engine. The highest power-to-weight ratio in its class. And the patented Variable Geometry Turbocharger (VG Turbo) gives you peak performance at every RPM.

4 Allison® 4000 MH 6-Speed Transmission for smooth shifting; our exclusive use of synthetic transmission fluid allows for up to three-year maintenance intervals.

5 Full-Cushion Air Glide suspension system positions ten Bilstein® shocks and ten air bags, eight of which are outboard mounted with auto-leveling for greater stability, a smoother ride and the best handling in its class.

Unique three-degree rear axle tilt perfectly aligns the engine, transmission and differential, minimizing stress on the drivetrain and reducing noise in the coach.



Automatic Traction Control (ATC) eliminates wheel slippage in slick conditions and heightens control.

Tag axle lifts for added maneuverability in tight spots.

6 Basement structure rust inhibitor. To prevent corrosion, the basement storage area is constructed with pre-primed steel with rust-inhibiting paint.

7 Full-length frame rails fabricated from 3" by 8" by 1/4" 60,000 PSI structural steel; rails are spaced 44" on center for a wider stance and unmatched strength.

8 The semi-monocoque design, with trussed superstructure, distributes stress evenly throughout the entire chassis and adds strength to sidewalls and bays.

MAY WE BUILD YOU A CHASSIS?

Did you know that every Roadmaster chassis is custom designed and built for the Monaco coach that will ride on it? It's a novel idea, but our owners seem to like it. And it pays off — in better performance, safety and reliability. Owners also like the fact that Roadmaster, a division of

Monaco Coach Corporation, only does one thing: They build chassis for motorhomes. Not trucks. Not buses. Just motorhomes. So naturally, they do it better. No wonder Roadmaster is the leading high-end diesel chassis manufacturer in America.

OUTBOARD AIR BAG SUSPENSION

The outboard-mounted air bags are protected by two steel plates and are placed farther apart than the competition, providing a wider and more stable platform for the coach. The active suspension automatically adjusts the pressure of the air bags as you drive and virtually eliminates nosediving and the side-to-side body sway associated with high wind conditions, curvy roads and emergency maneuvers.



WARRANTIES

12 MONTH/24,000 MILE basic limited warranty

5 YEAR/50,000 MILE limited warranty on aluminum or steel frame structure of sidewall, roof, front and rear cap

3 YEAR/50,000 MILE limited warranty on Roadmaster chassis

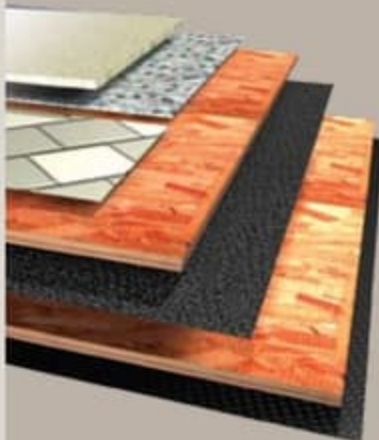
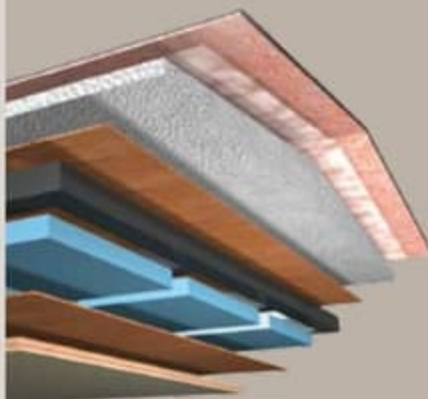
Applies to certain models. See owner's manual for complete details.

9 Two-stage Jake brake system assures you of safely traveling steep grades while 6-wheel anti-lock brakes with disc brakes in front help you maintain control in severe road conditions.

10 295/80R/22.5 Goodyear steel belted all-season tires ensure a safe and quiet ride (G670 RV tire).

11 The TRW power steering box allows for a 50-degree front wheel turn angle in both directions for better maneuverability and returns the steering wheel to its center position to eliminate driver fatigue.

12 All chassis are equipped with steel cage construction, steel firewall and steel stepwell for added safety.



SIGNATURE SERIES CONSTRUCTION



8-LAYER ALL-SEASON FOAM INSULATED ROOF:

(top to bottom)

- One-piece 1/4" thick fiberglass roof, crowned for water runoff and seamlessly joined with front and rear end caps; non-skid walkways on outboard areas for added convenience
- Vapor barrier
- 3-1/2" tapered bead foam supports the crowned roof; the center tunnel houses wiring and air conditioner ducts
- 1/4" marine grade plywood sheeting
- Tubular steel framework
- R 7.5 closed cel foam seals every nook and crevice
- Luaun and vinyl paneling are Vac-U-Bonded
- Sound-absorbing, easy-to-clean padded vinyl interior headliner

6-LAYER LAMINATED GEL COAT FIBERGLASS SIDEWALLS:

(left to right)

- Gel coat fiberglass outer wall
- Luaun paneling
- R 7.5 closed cel foam seals every nook and crevice
- Heavy-gauge tubular steel and 4" steel plate backers
- Luaun paneling; walls are Vac-U-Bonded together
- Decorative wall coverings

5-LAYER FLOORING:

(top to bottom)

- Tile, or 1/2" carpet pad and carpeting
- OSB flooring
- Decibel paper
- OSB flooring
- Waterproof Darco underbelly



ASSISTANCE

SALES • TECH • ROADSIDE

1-877-4MONACO

WE'RE HERE. ANYTIME, EVERY TIME.

- Reach us anytime — literally — via our live customer support line.
- Drive in to one of our 350 Service Centers.
- Enjoy the first year free when you enroll in our Owner Advantage Roadside Assistance Program.
- See where it all begins with a tour of one of our facilities in Indiana or Oregon. Call 1-800-650-7337 or 1-800-634-0855 to find out more.

OUTBOARD AIR BAG SUSPENSION

The outboard-mounted air bags are protected by two steel plates and are placed farther apart than the competition, providing a wider and more stable platform for the coach. The active suspension automatically adjusts the pressure of the air bags as you drive and virtually eliminates nosediving and the side-to-side body sway associated with high wind conditions, curvy roads and emergency maneuvers.



WARRANTIES

12 MONTH/24,000 MILE basic limited warranty

5 YEAR/50,000 MILE limited warranty on aluminum or steel frame structure of sidewall, roof, front and rear cap

3 YEAR/50,000 MILE limited warranty on Roadmaster chassis

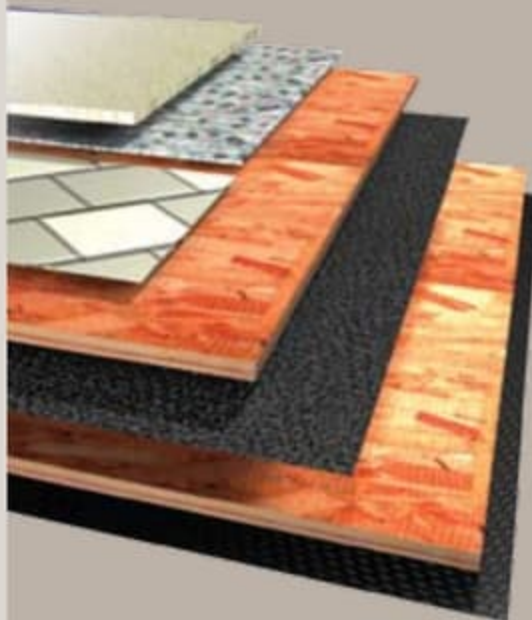
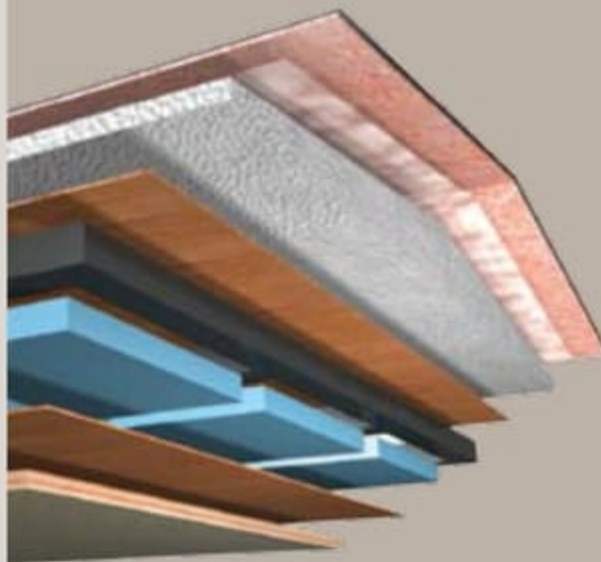
Applies to certain models. See owner's manual for complete details.

9 Two-stage Jake brake system assures you of safely traveling steep grades while 6-wheel anti-lock brakes with disc brakes in front help you maintain control in severe road conditions.

10 295/80R/22.5 Goodyear steel belted all-season tires ensure a safe and quiet ride (G670 RV tire).

11 The TRW power steering box allows for a 50-degree front wheel turn angle in both directions for better maneuverability and returns the steering wheel to its center position to eliminate driver fatigue.

12 All chassis are equipped with steel cage construction, steel firewall and steel stepwell for added safety.



SIGNATURE SERIES CONSTRUCTION



8-LAYER ALL-SEASON FOAM INSULATED ROOF:

(top to bottom)

- One-piece 1/4" thick fiberglass roof, crowned for water runoff and seamlessly joined with front and rear end caps; non-skid walkways on outboard areas for added convenience
- Vapor barrier
- 3-1/2" tapered bead foam supports the crowned roof; the center tunnel houses wiring and air conditioner ducts
- 1/4" marine grade plywood sheeting
- Tubular steel framework
- R 7.5 closed cel foam seals every nook and crevice
- Luaun and vinyl paneling are Vac-U-Bonded
- Sound-absorbing, easy-to-clean padded vinyl interior headliner

6-LAYER LAMINATED GEL COAT FIBERGLASS SIDEWALLS:

(left to right)

- Gel coat fiberglass outer wall
- Luaun paneling
- R 7.5 closed cel foam seals every nook and crevice
- Heavy-gauge tubular steel and 4" steel plate backers
- Luaun paneling; walls are Vac-U-Bonded together
- Decorative wall coverings

5-LAYER FLOORING:

(top to bottom)

- Tile, or 1/2" carpet pad and carpeting
- OSB flooring
- Decibel paper
- OSB flooring
- Waterproof Darco underbelly



ASSISTANCE

SALES • TECH • ROADSIDE

1-877-4MONACO

WE'RE HERE. ANYTIME, EVERY TIME.

- Reach us anytime — literally — via our live customer support line.
- Drive in to one of our 350 Service Centers.
- Enjoy the first year free when you enroll in our Owner Advantage Roadside Assistance Program.
- See where it all begins with a tour of one of our facilities in Indiana or Oregon. Call 1-800-650-7337 or 1-800-634-0855 to find out more.

STAINED OAK



NATURAL OAK



STAINED CHERRY



NATURAL CHERRY



CLASSIC CHERRY



CAYENNE SPICE II



GOLDEN NUGGET



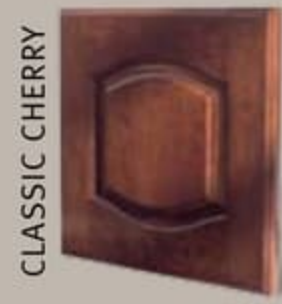
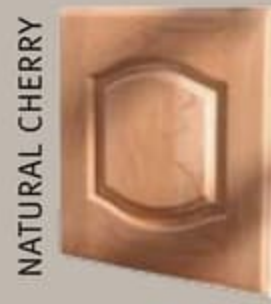
RALPH LAUREN WINDERMERE



- Carpet A
- Dinette B
- Sofa C
- Bedspread D

A	B	C	D

Note: Colors depicted are a reasonable representation though they may not be an exact match of the actual colors due to variances in processing and production. See your dealer for actual fabric and paint chip samples.



CAYENNE SPICE II



GOLDEN NUGGET



RALPH LAUREN WINDERMERE



- Carpet A
- Dinette B
- Sofa C
- Bedspread D

A	B	C	D

Note: Colors depicted are a reasonable representation though they may not be an exact match of the actual colors due to variances in processing and production. See your dealer for actual fabric and paint chip samples.



NATURAL MAPLE



SPICED MAPLE



WHICH WAY WILL YOU GO?

We know you love choices. That's why our designers give you so many tempting options. From mild to wild, discriminating to daring, Monaco offers lots of fun ways to go.

RALPH LAUREN BLACK PEARL



RALPH LAUREN LANDSDOWN II



RALPH LAUREN PACKAGE:

Here's a feast for your senses. Our exclusive Ralph Lauren package offers upgraded features throughout the coach. Because we want your life on the road to be beautiful.

- › Upgraded Ralph Lauren Fabrics Both Living Room and Bedroom
- › Upgraded Villa Furniture Featuring 2-Tone Ralph Lauren Fabric/Leather and Villa Dinette Chairs
- › Upgraded Galley and Lavatory Faucets
- › Upgraded Tumbled Stone Galley/ Bath Backsplashes ILO Corian®
- › Polished Porcelain 14" x 14" Floor Tile
- › Upgraded Carpet
- › Additional Decorative Pillows in Ralph Lauren Fabrics
- › Decorative Lighting All in Brush Bronze
- › Detailed Decorative Carved Headboard
- › Upgraded Carved Slide-Out Fascia
- › Upgraded Knobs and Pulls
- › Wallpaper
- › Ceiling Treatments
- › Black Microwave



NATURAL MAPLE



SPICED MAPLE



WHICH WAY WILL YOU GO?

We know you love choices. That's why our designers give you so many tempting options. From mild to wild, discriminating to daring, Monaco offers lots of fun ways to go.

RALPH LAUREN BLACK PEARL



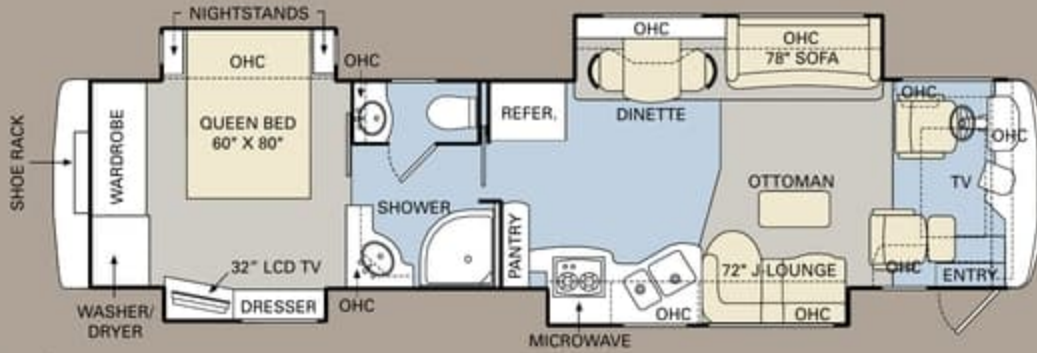
RALPH LAUREN LANDSDOWN II



RALPH LAUREN PACKAGE:

Here's a feast for your senses. Our exclusive Ralph Lauren package offers upgraded features throughout the coach. Because we want your life on the road to be beautiful.

- › Upgraded Ralph Lauren Fabrics Both Living Room and Bedroom
- › Upgraded Villa Furniture Featuring 2-Tone Ralph Lauren Fabric/Leather and Villa Dinette Chairs
- › Upgraded Galley and Lavatory Faucets
- › Upgraded Tumbled Stone Galley/ Bath Backsplashes ILO Corian®
- › Polished Porcelain 14" x 14" Floor Tile
- › Upgraded Carpet
- › Additional Decorative Pillows in Ralph Lauren Fabrics
- › Decorative Lighting All in Brush Bronze
- › Detailed Decorative Carved Headboard
- › Upgraded Carved Slide-Out Fascia
- › Upgraded Knobs and Pulls
- › Wallpaper
- › Ceiling Treatments
- › Black Microwave



PLATINUM IV



CHATEAU IV



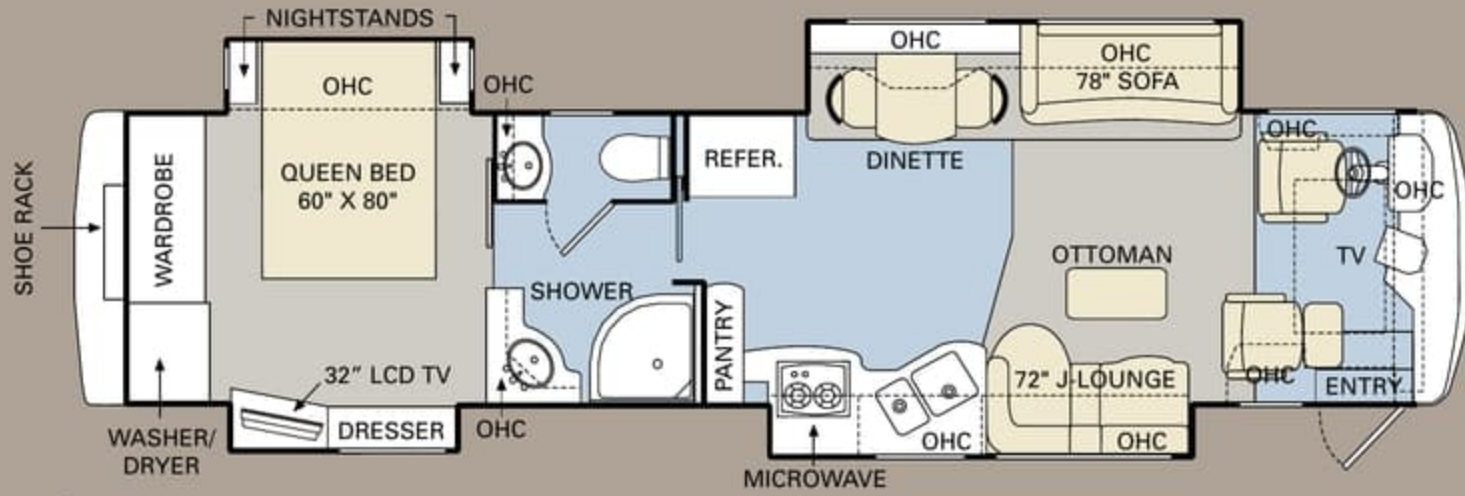
CAMBRIDGE IV

TILE CARPET

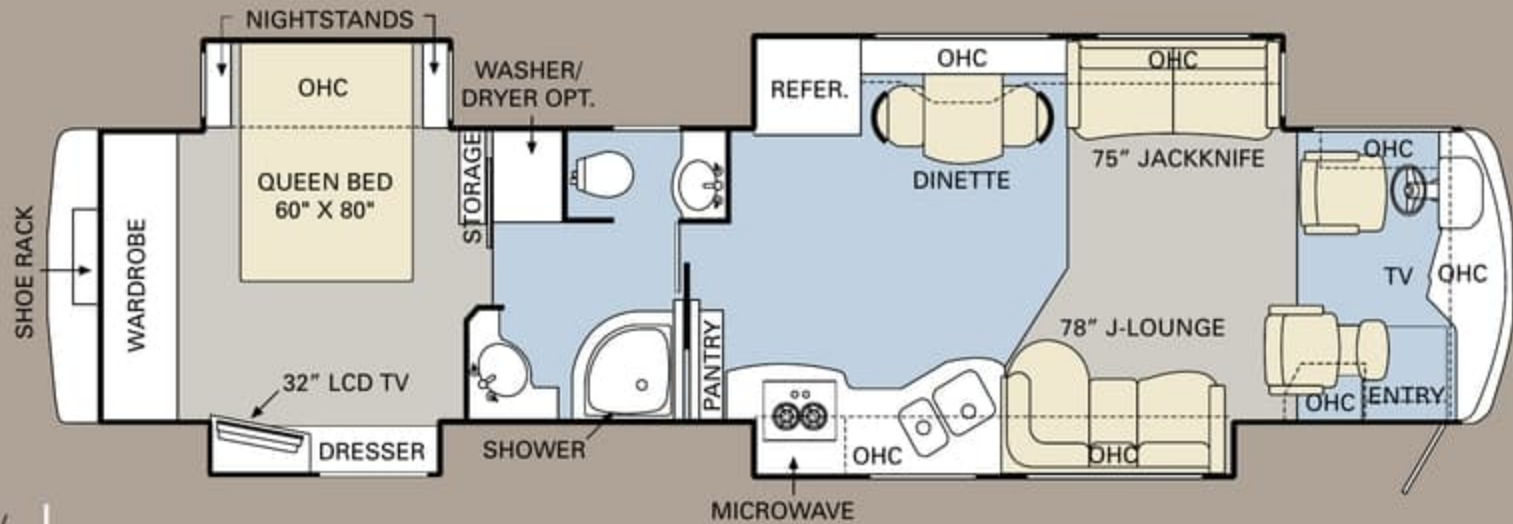
Ready to choose? The Signature Series is available in five large, luxurious floorplans. All floorplans come with quad slides for the ultimate in spaciousness.

FURNITURE OPTIONS:

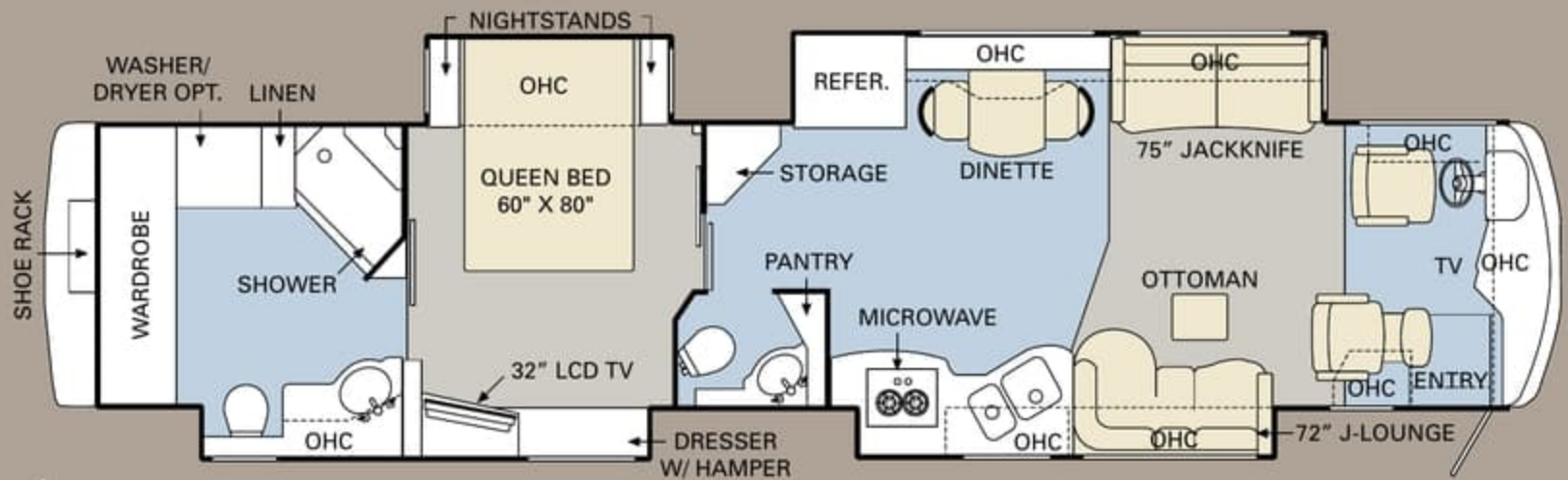




PLATINUM IV



CHATEAU IV

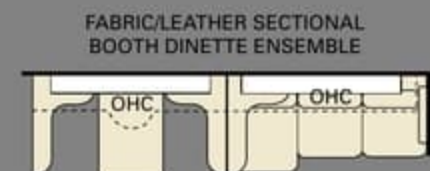


CAMBRIDGE IV

TILE CARPET

Ready to choose? The Signature Series is available in five large, luxurious floorplans. All floorplans come with quad slides for the ultimate in spaciousness.

FURNITURE OPTIONS:

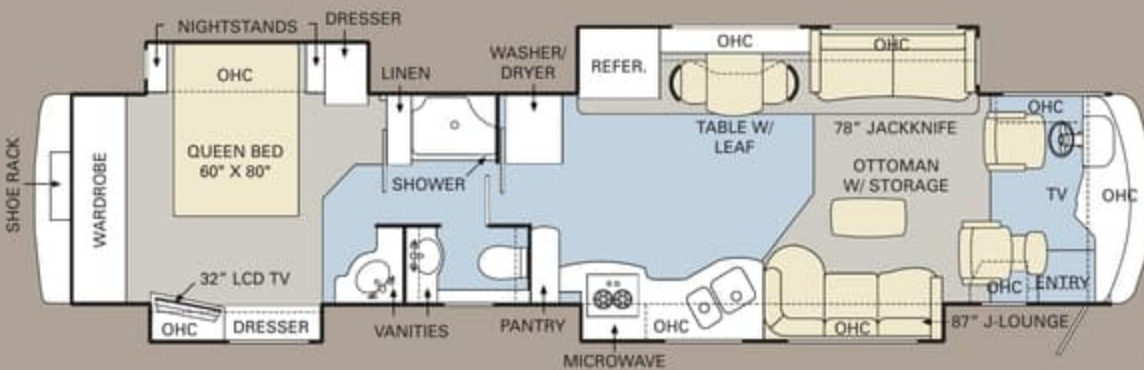




FORTRESS IV



BUCKINGHAM IV



COMMANDER IV

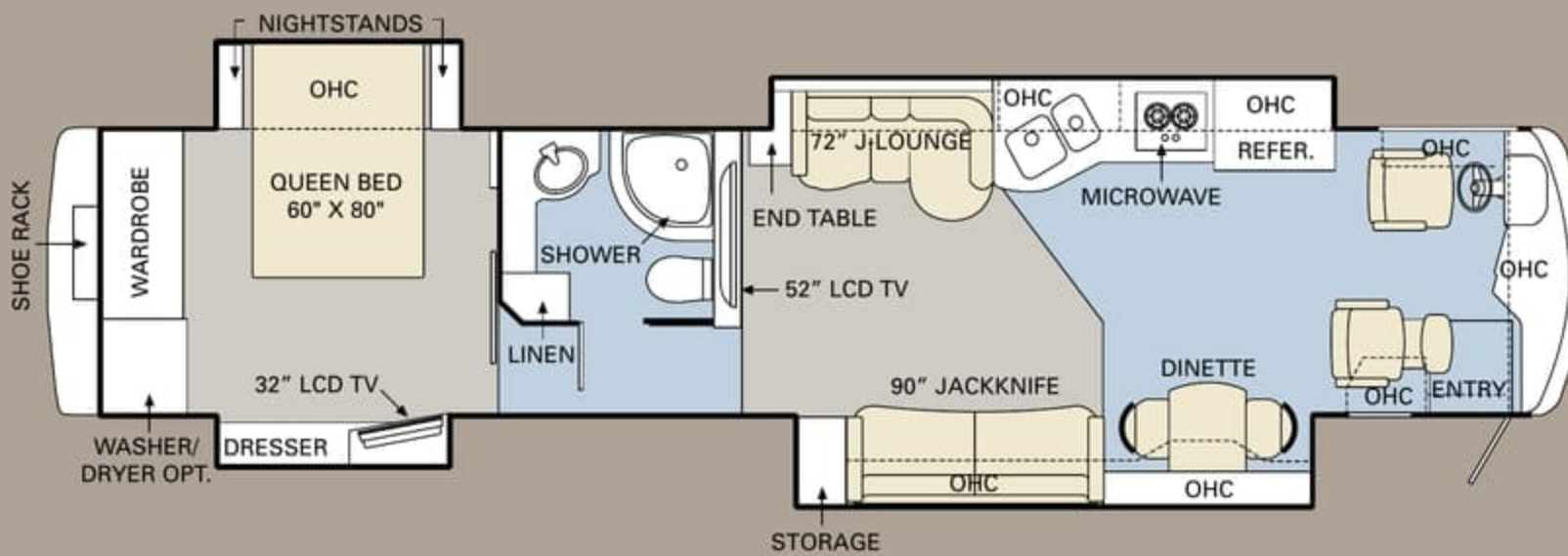
ALL ROADS LEAD TO WWW.MONACOCOACH.COM.

Wherever the road takes you, you're never more than a click away from your friends at Monaco. Just go to www.monacocoach.com for all the latest product news, club dates and destinations, a dealer locator function, and factory tour information. You can also e-mail us directly through the site at any time.

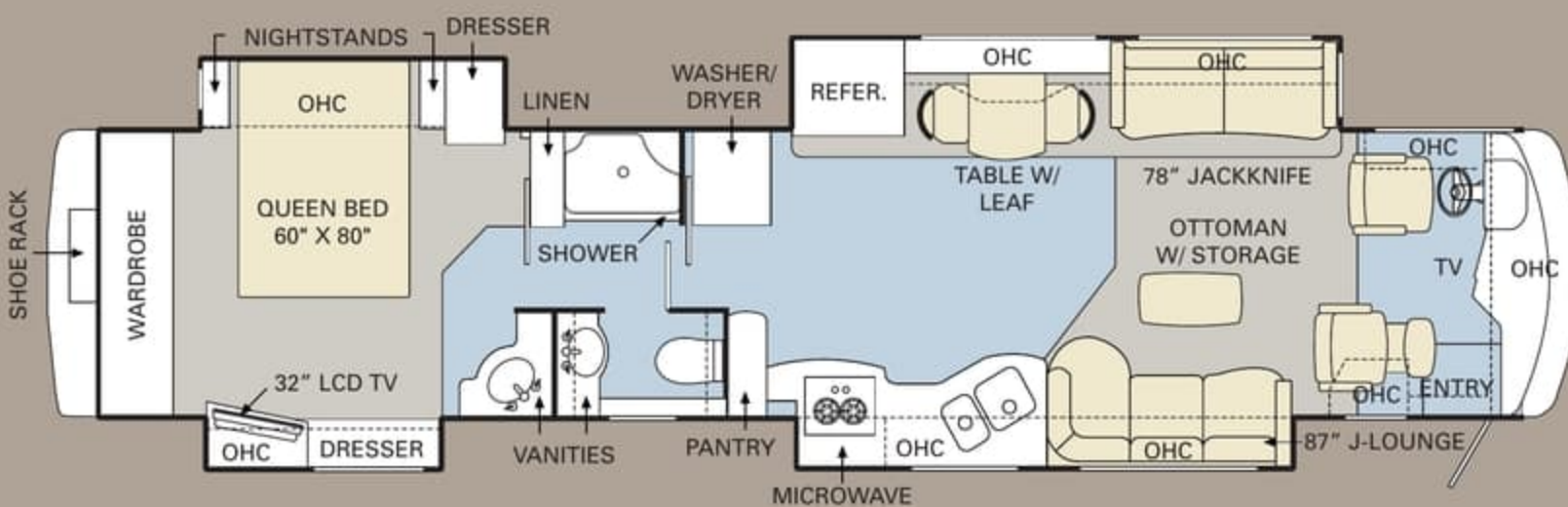




FORTRESS IV



BUCKINGHAM IV



COMMANDER IV

ALL ROADS LEAD TO WWW.MONACOCOACH.COM.

Wherever the road takes you, you're never more than a click away from your friends at Monaco. Just go to www.monacocoach.com for all the latest product news, club dates and destinations, a dealer locator function, and factory tour information. You can also e-mail us directly through the site at any time.





SPECIFICATIONS

Due to continuous product improvement, please see the website for the latest in standards and options, specifications, and technical data. *Go to www.monacocoach.com.*

	Weight Ratings (Lbs.)					Measurements	Wheelbase	Overall Length	Overall Height (with A/C) (add 5" for satellite option)	Interior Height	Interior Width	Exterior Width	Tank Capacity (Gal.) ¹				
	Gross Vehicle	Gross Combined ²	Front Gross Axle	Rear Gross Axle	Tag Axle								Gray Tank	Black Tank	Fresh Tank	LP Tank ³	Fuel Tank
PLATINUM IV	50,160	60,160	15,160	23,000	12,000	250.75"	41' 7"	12' 8"	84"	96"	100.5"	72	40	100	25	150	
CHATEAU IV	50,160	60,160	15,160	23,000	12,000	263"	43' 1"	12' 8"	84"	96"	100.5"	72	40	100	25	150	
CAMBRIDGE IV	50,160	60,160	15,160	23,000	12,000	284"	44' 11"	12' 8"	84"	96"	100.5"	72	40	100	25	150	
FORTRESS IV	50,160	60,160	15,160	23,000	12,000	284"	44' 11"	12' 8"	84"	96"	100.5"	72	40	100	25	150	
BUCKINGHAM IV	50,160	60,160	15,160	23,000	12,000	284"	44' 11"	12' 8"	84"	96"	100.5"	72	40	100	25	150	
COMMANDER IV	50,160	60,160	15,160	23,000	12,000	284"	44' 11"	12' 8"	84"	96"	100.5"	72	40	100	25	150	

¹Towing capacity is limited by GCWR; your vehicle's towing capacity is the difference between the GCWR and the actual vehicle weight, including all water, fuel, passengers and cargo. Your towed vehicle should be equipped with auxiliary brakes if the weight of the towed vehicle exceeds 1,000 lbs. Consult your owner's manual for further towing information.

²All tank capacities are estimated based upon calculations provided by the tank manufacturers and represent approximate capacities. The actual "usable capacity" may be greater or less than the estimated capacities based upon fabrication and installation of the tanks.

³Actual filled LP capacity is 80% of listing due to safety shut-off required on tank.

The actual overall length of the recreational vehicle may differ from that indicated in the brochure due to variances in the manufacturing process and/or installed components. The actual length may be greater or less than that indicated. Due to the large variety of options and floorplan arrangements available to our customers, actual weights for each unit can differ significantly. Monaco Coach provides a weight sticker on each unit we produce which includes that unit's tank capacities and approximate weight. Consult your local Monaco Coach dealer for unit availability and further information. The information printed in this brochure reflects product design, fabrication, and component parts at the date of printing. The manufacturer reserves the right, at any time, to make changes in product design or material or component specifications as its sole option, without notice. This

includes the substitution of components of a different brand or trade name which will result in comparable performance. All information printed in this brochure is subject to change after the date of printing. Some features shown or mentioned in this brochure are optional and may only be available in selected floorplans. Photographs may show props or decorations that are not standard equipment on Monaco Coach models. Monaco Coach, the Monaco logo and its design, are registered trademarks. All other products and company names are trademarks and/or registered trademarks of their respective holders. While the color of the motorhome's exterior and the interior fabrics depicted in this sales brochure are fair and reasonable depictions, the colors depicted may not be an exact match of the actual colors because of the variances in photo-processing and variances caused by inserting the photographs

within the sales brochure. Due to product improvements, changes during the model year and/or transcription errors that may occur, information represented within this brochure may not be accurate at the time of your purchase. If certain information is significant to your purchasing decision, please confirm the information with your dealer prior to submitting your order. Component part and appliance manufacturers issue limited warranties covering those portions of the recreational vehicle not covered by the Limited Warranties issued by Monaco Coach Corporation. To learn which specific component parts and appliances are excluded from the Limited Warranties issued by Monaco Coach Corporation, please contact your selling dealership or Monaco Coach Corporation directly, or review the warranty packet inside the recreational vehicle.

BODY CONSTRUCTION

- › Heavy-Duty Steel Superstructure with Steel Cage Cockpit Construction
- › Seamless One-Piece Molded Crowned Fiberglass Roof
- › All-Season Foam Insulated Roof
- › Laminated Gel Coat Fiberglass Walls
- › Five-Layer Flooring with Two Layers OSB Flooring
- › Deluxe Full-Body Paint with Fades
- › Panaview™ 1-Piece Front Windshield
- › Triple Head Power Controlled Heated Chrome Exterior Mirrors with Security Cameras and Turn Indicator Lights
- › Halogen Fog Lamps
- › Daytime Running Lights
- › Recessed Side Docking Lights
- › Dual Trumpet Air Horns
- › Entry Step Storage
- › Insulated Aluminum Baggage Doors with Power Locks
- › Lined Pass-Through Storage Compartments
- › Interlocking Aluminum Framed Slide-Out Houses
- › Storage Bay Slide-Out Tray (One Side)
- › Storage Bay Slide-Out Tray (Full Pass-Through)
- › Rear Ladder
- › Monaco Full-Length Mud Flap with Stainless Steel Logo
- › 3M Film Front Mask

OPTIONS

- › Electric Slide-Out Storage Trays (Complete Pass-Through)



SPECIFICATIONS

Due to continuous product improvement, please see the website for the latest in standards and options, specifications, and technical data. *Go to www.monacocoach.com.*

	Weight Ratings (Lbs.)					Measurements	Tank Capacity (Gal.) ²									
	Gross Vehicle	Gross Combined ¹	Front Gross Axle	Rear Gross Axle	Tag Axle		Wheelbase	Overall Length	Overall Height (with A/C) (add 5" for satellite option)	Interior Height	Interior Width	Exterior Width	Gray Tank	Black Tank	Fresh Tank	LP Tank ³
PLATINUM IV	50,160	60,160	15,160	23,000	12,000	250.75"	41' 7"	12' 8"	84"	96"	100.5"	72	40	100	25	150
CHATEAU IV	50,160	60,160	15,160	23,000	12,000	263"	43' 1"	12' 8"	84"	96"	100.5"	72	40	100	25	150
CAMBRIDGE IV	50,160	60,160	15,160	23,000	12,000	284"	44' 11"	12' 8"	84"	96"	100.5"	72	40	100	25	150
FORTRESS IV	50,160	60,160	15,160	23,000	12,000	284"	44' 11"	12' 8"	84"	96"	100.5"	72	40	100	25	150
BUCKINGHAM IV	50,160	60,160	15,160	23,000	12,000	284"	44' 11"	12' 8"	84"	96"	100.5"	72	40	100	25	150
COMMANDER IV	50,160	60,160	15,160	23,000	12,000	284"	44' 11"	12' 8"	84"	96"	100.5"	72	40	100	25	150

¹Towing capacity is limited by GCWR; your vehicle's towing capacity is the difference between the GCWR and the actual vehicle weight, including all water, fuel, passengers and cargo. Your towed vehicle should be equipped with auxiliary brakes if the weight of the towed vehicle exceeds 1,000 lbs. Consult your owner's manual for further towing information.

²All tank capacities are estimated based upon calculations provided by the tank manufacturers and represent approximate capacities. The actual "usable capacity" may be greater or less than the estimated capacities based upon fabrication and installation of the tanks.

³Actual filled LP capacity is 80% of listing due to safety shut-off required on tank.

The actual overall length of the recreational vehicle may differ from that indicated in the brochure due to variances in the manufacturing process and/or installed components. The actual length may be greater or less than that indicated. Due to the large variety of options and floorplan arrangements available to our customers, actual weights for each unit can differ significantly. Monaco Coach provides a weight sticker on each unit we produce which includes that unit's tank capacities and approximate weight. Consult your local Monaco Coach dealer for unit availability and further information. The information printed in this brochure reflects product design, fabrication, and component parts at the date of printing. The manufacturer reserves the right, at any time, to make changes in product design or material or component specifications as its sole option, without notice. This

includes the substitution of components of a different brand or trade name which will result in comparable performance. All information printed in this brochure is subject to change after the date of printing. Some features shown or mentioned in this brochure are optional and may only be available in selected floorplans. Photographs may show props or decorations that are not standard equipment on Monaco Coach models. Monaco Coach, the Monaco logo and its design, are registered trademarks. All other products and company names are trademarks and/or registered trademarks of their respective holders. While the color of the motorhome's exterior and the interior fabrics depicted in this sales brochure are fair and reasonable depictions, the colors depicted may not be an exact match of the actual colors because of the variances in photo-processing and variances caused by inserting the photographs

within the sales brochure. **Due to product improvements, changes during the model year and/or transcription errors that may occur, information represented within this brochure may not be accurate at the time of your purchase. If certain information is significant to your purchasing decision, please confirm the information with your dealer prior to submitting your order.** Component part and appliance manufacturers issue limited warranties covering those portions of the recreational vehicle not covered by the Limited Warranties issued by Monaco Coach Corporation. To learn which specific component parts and appliances are excluded from the Limited Warranties issued by Monaco Coach Corporation, please contact your selling dealership or Monaco Coach Corporation directly, or review the warranty packet inside the recreational vehicle.

BODY CONSTRUCTION

- › Heavy-Duty Steel Superstructure with Steel Cage Cockpit Construction
- › Seamless One-Piece Molded Crowned Fiberglass Roof
- › All-Season Foam Insulated Roof
- › Laminated Gel Coat Fiberglass Walls
- › Five-Layer Flooring with Two Layers OSB Flooring
- › Deluxe Full-Body Paint with Fades
- › Panaview™ 1-Piece Front Windshield
- › Triple Head Power Controlled Heated Chrome Exterior Mirrors with Security Cameras and Turn Indicator Lights
- › Halogen Fog Lamps
- › Daytime Running Lights
- › Recessed Side Docking Lights
- › Dual Trumpet Air Horns
- › Entry Step Storage
- › Insulated Aluminum Baggage Doors with Power Locks
- › Lined Pass-Through Storage Compartments
- › Interlocking Aluminum Framed Slide-Out Houses
- › Storage Bay Slide-Out Tray (One Side)
- › Storage Bay Slide-Out Tray (Full Pass-Through)
- › Rear Ladder
- › Monaco Full-Length Mud Flap with Stainless Steel Logo
- › 3M Film Front Mask

OPTIONS

- › Electric Slide-Out Storage Trays (Complete Pass-Through)



CHASSIS/ENGINE/SUSPENSION

- › Roadmaster S-Series: Semi-Monocoque Chassis
- › Multiplex Chassis Wiring
- › Cummins® ISX 525 HP Engine with Allison® 4000 MH 6-Speed World Transmission and Electronic Shifter
- › Torque: (@ 1,200 RPM) 1,650 lbs./ft. Max. Net
- › Engine Displacement: 912"/15.0L
- › Dual Fuel Fill
- › 270 Amp Alternator
- › Rear Axle Ratio: 4.33:1
- › Tires: 295/80R/22.5
- › Polished Aluminum Wheels
- › Full-Cushion Air Glide Suspension with Ten Air Bags, Eight of Which Are Outboard Mounted, and Ten Bilstein® Shock Absorbers
- › Air Suspension with Ping Tank
- › Automatic Traction Control
- › Air Disc Brake System with ABS (Front and Rear)
- › Tag Axle with Anti-Lock Braking System
- › Two-Stage Jacobs Engine Brake
- › Prewire for Supplemental Braking System
- › Engine Block Heater with Switch on Dash
- › Automatic Air Leveling System (Power Gear)
- › 10,000 Lb. Hitch Receiver and 7/4-Way Trailer Plug
- › Remote Inflation Connector

OPTIONS

- › Cummins® ISX 600 HP Engine with Allison® 4000 MH 6-Speed World Transmission and Electronic Shifter
- › Torque: 1,850 lbs./ft.; Engine Displacement: 912"
- › Electronic Adjustable Shock System
- › Hydraulic Leveling System (Replaces Air Leveling)
- › Dual Leveling System (Air/Hydraulic)

COCKPIT

- › In-Dash Stereo with AM/FM Stereo with Multi-Disc CD Changer
- › Auxiliary Audio Input in Cockpit Area
- › GPS Navigational System
- › Color Rear Vision System
- › Rear Vision Camera
- › SEE-Vision Security Cameras
- › CB Radio Prep (Cable and Antenna)
- › Power Window Blinds (Cockpit Only)
- › Power Front Sunvisors
- › Pilot and Co-Pilot Side Window Manual Sunscreens
- › Power Driver's Side Window
- › Adjustable Brake and Accelerator Pedals
- › Lighted VIP Smartwheel® with Controls for Windshield Wiper System, ICC and Cruise Control
- › Cruise Control Light on Dash
- › Leather Pilot and Co-Pilot Seats with 6-Way Power Adjustments; Heated; Integrated 3-Point Seatbelts; Adjustable Armrests; Electric Headrests; Power Footrest and Electric Sliding Seat Cushion on Co-Pilot Seat

OPTIONS

- › Air Ride Pilot Seat
- › Interior Cockpit Sunscreens
- › Electric Cockpit Solar Screens with Blackout Shades (Replaces Sunvisors and Window Blinds)
- › CB Radio
- › XM Satellite Stereo (Requires Subscription)
- › Sirius Satellite Radio System (Requires Subscription)

APPLIANCES AND ACCESSORIES

- › 17 Cu. Ft. Four-Door Refrigerator with Raised Panel Doors
- › Recessed High-Output 2-Burner Cooktop with Flush-Mounted Covers
- › Spacesaver Convection Microwave with Touch Control
- › Electric TV Antenna
- › KVH R5 In-Motion Digital Satellite System (Does Not Include Receiver)
- › 37" LCD TV Mounted in Living Area Overhead (N/A: Fortress IV, Buckingham IV)
- › 42" LCD TV Mounted in Entertainment Center behind Dinette Area (Fortress IV Only)
- › 52" LCD TV in Living Area (Buckingham IV)
- › 32" LCD TV in Bedroom
- › Bose® Sound System with DVD Player and Surround Sound Speakers
- › Bedroom DVD Player
- › Universal Remote System for Living Area TV
- › Combination Washer/Dryer

OPTIONS

- › Residential Refrigerator with Additional House Batteries
- › Stainless Steel Refrigerator Panels (If Selected with 17 Cu. Ft.)
- › Stack Washer/Dryer (N/A: Platinum IV)
- › Central Vacuum System with Toe Kick Vacuum in Pantry Base
- › Dishwasher Drawer
- › 37" LCD TV Mounted in Living Area Ceiling (N/A: Fortress IV, Buckingham IV)
- › 26" LCD TV in Living Area Overhead (Fortress IV and Buckingham IV Only)
- › Bose® Wave Radio in Bedroom
- › KVH R6 In-Motion Digital Satellite System (Does Not Include Receivers)
- › Exterior 32" Sharp LCD TV (N/A: Buckingham IV)



CHASSIS/ENGINE/SUSPENSION

- › Roadmaster S-Series: Semi-Monocoque Chassis
- › Multiplex Chassis Wiring
- › Cummins® ISX 525 HP Engine with Allison® 4000 MH 6-Speed World Transmission and Electronic Shifter
- › Torque: (@ 1,200 RPM) 1,650 lbs./ft. Max. Net
- › Engine Displacement: 912"/15.0L
- › Dual Fuel Fill
- › 270 Amp Alternator
- › Rear Axle Ratio: 4.33:1
- › Tires: 295/80R/22.5
- › Polished Aluminum Wheels
- › Full-Cushion Air Glide Suspension with Ten Air Bags, Eight of Which Are Outboard Mounted, and Ten Bilstein® Shock Absorbers
- › Air Suspension with Ping Tank
- › Automatic Traction Control
- › Air Disc Brake System with ABS (Front and Rear)
- › Tag Axle with Anti-Lock Braking System
- › Two-Stage Jacobs Engine Brake
- › Prewire for Supplemental Braking System
- › Engine Block Heater with Switch on Dash
- › Automatic Air Leveling System (Power Gear)
- › 10,000 Lb. Hitch Receiver and 7/4-Way Trailer Plug
- › Remote Inflation Connector

OPTIONS

- › Cummins® ISX 600 HP Engine with Allison® 4000 MH 6-Speed World Transmission and Electronic Shifter
- › Torque: 1,850 lbs./ft.; Engine Displacement: 912"
- › Electronic Adjustable Shock System
- › Hydraulic Leveling System (Replaces Air Leveling)
- › Dual Leveling System (Air/Hydraulic)

COCKPIT

- › In-Dash Stereo with AM/FM Stereo with Multi-Disc CD Changer
- › Auxiliary Audio Input in Cockpit Area
- › GPS Navigational System
- › Color Rear Vision System
- › Rear Vision Camera
- › SEE-Vision Security Cameras
- › CB Radio Prep (Cable and Antenna)
- › Power Window Blinds (Cockpit Only)
- › Power Front Sunvisors
- › Pilot and Co-Pilot Side Window Manual Sunscreens
- › Power Driver's Side Window
- › Adjustable Brake and Accelerator Pedals
- › Lighted VIP Smartwheel® with Controls for Windshield Wiper System, ICC and Cruise Control
- › Cruise Control Light on Dash
- › Leather Pilot and Co-Pilot Seats with 6-Way Power Adjustments; Heated; Integrated 3-Point Seatbelts; Adjustable Armrests; Electric Headrests; Power Footrest and Electric Sliding Seat Cushion on Co-Pilot Seat

OPTIONS

- › Air Ride Pilot Seat
- › Interior Cockpit Sunscreens
- › Electric Cockpit Solar Screens with Blackout Shades (Replaces Sunvisors and Window Blinds)
- › CB Radio
- › XM Satellite Stereo (Requires Subscription)
- › Sirius Satellite Radio System (Requires Subscription)

APPLIANCES AND ACCESSORIES

- › 17 Cu. Ft. Four-Door Refrigerator with Raised Panel Doors
- › Recessed High-Output 2-Burner Cooktop with Flush-Mounted Covers
- › Spacesaver Convection Microwave with Touch Control
- › Electric TV Antenna
- › KVH R5 In-Motion Digital Satellite System (Does Not Include Receiver)
- › 37" LCD TV Mounted in Living Area Overhead (N/A: Fortress IV, Buckingham IV)
- › 42" LCD TV Mounted in Entertainment Center behind Dinette Area (Fortress IV Only)
- › 52" LCD TV in Living Area (Buckingham IV)
- › 32" LCD TV in Bedroom
- › Bose® Sound System with DVD Player and Surround Sound Speakers
- › Bedroom DVD Player
- › Universal Remote System for Living Area TV
- › Combination Washer/Dryer

OPTIONS

- › Residential Refrigerator with Additional House Batteries
- › Stainless Steel Refrigerator Panels (If Selected with 17 Cu. Ft.)
- › Stack Washer/Dryer (N/A: Platinum IV)
- › Central Vacuum System with Toe Kick Vacuum in Pantry Base
- › Dishwasher Drawer
- › 37" LCD TV Mounted in Living Area Ceiling (N/A: Fortress IV, Buckingham IV)
- › 26" LCD TV in Living Area Overhead (Fortress IV and Buckingham IV Only)
- › Bose® Wave Radio in Bedroom
- › KVH R6 In-Motion Digital Satellite System (Does Not Include Receivers)
- › Exterior 32" Sharp LCD TV (N/A: Buckingham IV)

INTERIOR

- › Stained or Natural Oak Cabinetry
- › Dinette Wall Cabinet with Solid Surface Top
- › Built-In Storage Area for Kitchen Countertop Covers
- › Bedroom Dresser with Raised Panel Drawer Faces
- › Clothing Hamper in Bedroom
- › Low-Friction Roller Drawer Guides
- › Radiused Ceiling Design with Accents in Living Room and Bedroom
- › Corian® High-Gloss Solid Surface Countertops Throughout
- › Integrated Sinks in Vanity and Galley
- › Ceramic Tile Backsplash in Galley and Bath Areas
- › Corian® Countertop Shelf at Living Room Side of Kitchen Countertop
- › Power Vienna Shades in Living Room and Dining Area
- › Day/Night Shades with Blackouts in Bedroom
- › Designer Vinyl Wallpaper Throughout
- › Corian® Cutting Board
- › Two-Tiered Silverware Drawer Divider
- › Designer Textured Carpet in Living Area and Bedroom
- › High-Gloss Tile Floors in Galley and Bath
- › High-Gloss Tile Flooring in Cockpit Area
- › Raised Panel Door for Private Bath
- › Bedspread and Pillows
- › Nightstands with Corian® Countertops
- › Corian® Windowsills in Living Area
- › Decorative Cabinetry Hardware (Two Decors with Brass, Two with Satin Nickel)

OPTIONS

- › Interior Decors: Cayenne Spice II, Golden Nugget
- › Ralph Lauren Decors: Landsdown II, Black Pearl, Windermere
- › Spiced or Natural Maple, and Natural, Stained or Classic Cherry Cabinetry
- › Solar Screens with Blackout Shades Throughout (Power in Living Area)
- › Ceiling Fan in Bedroom
- › Large Bay Window in Living Area (Replaces Living Area Overheads on Driver and Passenger Sides)
- › Sculptured Carpet Design in Living Room
- › Full Tile Living Room Floor
- › Area Rugs in Living Room and Galley (with Full Tile Option)
- › Drop-In Glass Vanity Sink

FURNITURE

- › Legless Side-Slide Solid Surface Dinette Table with Two Freestanding Dinette Chairs and Two Folding Chairs
- › Roadside: Fabric Sleeper Sofa
- › Curbside: Leather J-Lounge with Drawer and Ottoman with Storage
- › Queen Bed with Pillowtop-Hinged Mattress

OPTIONS (Living Area Furniture is Floorplan Dependent)

- › King Bed (72" x 80")
- › Queen Air Mattress with Digital Remote
- › King Air Mattress with Digital Remote
- › Dinette Side: Leather Euro-Recliner with Ottoman
- › Roadside: Glider Recliner with Ottoman
- › Leather Sleeper Sofa with Drawer and Ottoman with Storage
- › Computer Desk with Leather Euro-Recliner
- › Leather Hide-A-Bed and Ottoman with Storage
- › Leather Hide-A-Bed with Air Mattress and Ottoman with Storage
- › Fabric/Leather Sectional Booth Dinette Ensemble
- › Two Folding Chairs with Sectional Booth Dinette Ensemble

ELECTRICAL SYSTEMS AND LIGHTS

- › 50 Amp 120/240V Distribution Panel and Power Cord
- › Onan® 12.5 kW QD Generator on Power Slide-Out Tray with Auxiliary Start Switch and Automatic Temperature Start
- › 2,800 Watt Pure Sine Wave Inverter with Auto Gen Start and Auto Temp Start
- › Halogen Map Lights above Driver/Passenger Seating
- › Accent Rope Lighting Throughout Coach
- › Lighted Utility Center (Phone, Cable TV, Water, Electrical Hook-Ups)
- › Underhood Utility Light
- › 120V Outlet in Private Bath
- › 120V Outlet in Bed Base
- › 120V Receptacles inside Storage Compartment
- › Lights in Outside Storage Compartments
- › Four 6V House Batteries
- › Two 12V Chassis Batteries
- › Surge Guard™ Automatic Transfer Switch (50 Amp)
- › Multiplex 12V Wiring for Dash and Throughout Interior of Coach
- › 100 Watt Solar Panel

OPTIONS

- › Glass Matt Batteries (Replace House and Chassis Batteries)

INTERIOR

- › Stained or Natural Oak Cabinetry
- › Dinette Wall Cabinet with Solid Surface Top
- › Built-In Storage Area for Kitchen Countertop Covers
- › Bedroom Dresser with Raised Panel Drawer Faces
- › Clothing Hamper in Bedroom
- › Low-Friction Roller Drawer Guides
- › Radiused Ceiling Design with Accents in Living Room and Bedroom
- › Corian® High-Gloss Solid Surface Countertops Throughout
- › Integrated Sinks in Vanity and Galley
- › Ceramic Tile Backsplash in Galley and Bath Areas
- › Corian® Countertop Shelf at Living Room Side of Kitchen Countertop
- › Power Vienna Shades in Living Room and Dining Area
- › Day/Night Shades with Blackouts in Bedroom
- › Designer Vinyl Wallpaper Throughout
- › Corian® Cutting Board
- › Two-Tiered Silverware Drawer Divider
- › Designer Textured Carpet in Living Area and Bedroom
- › High-Gloss Tile Floors in Galley and Bath
- › High-Gloss Tile Flooring in Cockpit Area
- › Raised Panel Door for Private Bath
- › Bedspread and Pillows
- › Nightstands with Corian® Countertops
- › Corian® Windowsills in Living Area
- › Decorative Cabinetry Hardware (Two Decors with Brass, Two with Satin Nickel)

OPTIONS

- › Interior Decors: Cayenne Spice II, Golden Nugget
- › Ralph Lauren Decors: Landsdown II, Black Pearl, Windermere
- › Spiced or Natural Maple, and Natural, Stained or Classic Cherry Cabinetry
- › Solar Screens with Blackout Shades Throughout (Power in Living Area)
- › Ceiling Fan in Bedroom
- › Large Bay Window in Living Area (Replaces Living Area Overheads on Driver and Passenger Sides)
- › Sculptured Carpet Design in Living Room
- › Full Tile Living Room Floor
- › Area Rugs in Living Room and Galley (with Full Tile Option)
- › Drop-In Glass Vanity Sink

FURNITURE

- › Legless Side-Slide Solid Surface Dinette Table with Two Freestanding Dinette Chairs and Two Folding Chairs
- › Roadside: Fabric Sleeper Sofa
- › Curbside: Leather J-Lounge with Drawer and Ottoman with Storage
- › Queen Bed with Pillowtop-Hinged Mattress

OPTIONS (Living Area Furniture is Floorplan Dependent)

- › King Bed (72" x 80")
- › Queen Air Mattress with Digital Remote
- › King Air Mattress with Digital Remote
- › Dinette Side: Leather Euro-Recliner with Ottoman
- › Roadside: Glider Recliner with Ottoman
- › Leather Sleeper Sofa with Drawer and Ottoman with Storage
- › Computer Desk with Leather Euro-Recliner
- › Leather Hide-A-Bed and Ottoman with Storage
- › Leather Hide-A-Bed with Air Mattress and Ottoman with Storage
- › Fabric/Leather Sectional Booth Dinette Ensemble
- › Two Folding Chairs with Sectional Booth Dinette Ensemble

ELECTRICAL SYSTEMS AND LIGHTS

- › 50 Amp 120/240V Distribution Panel and Power Cord
- › Onan® 12.5 kW QD Generator on Power Slide-Out Tray with Auxiliary Start Switch and Automatic Temperature Start
- › 2,800 Watt Pure Sine Wave Inverter with Auto Gen Start and Auto Temp Start
- › Halogen Map Lights above Driver/Passenger Seating
- › Accent Rope Lighting Throughout Coach
- › Lighted Utility Center (Phone, Cable TV, Water, Electrical Hook-Ups)
- › Underhood Utility Light
- › 120V Outlet in Private Bath
- › 120V Outlet in Bed Base
- › 120V Receptacles inside Storage Compartment
- › Lights in Outside Storage Compartments
- › Four 6V House Batteries
- › Two 12V Chassis Batteries
- › Surge Guard™ Automatic Transfer Switch (50 Amp)
- › Multiplex 12V Wiring for Dash and Throughout Interior of Coach
- › 100 Watt Solar Panel

OPTIONS

- › Glass Matt Batteries (Replace House and Chassis Batteries)



PLUMBING AND LP SYSTEMS

- › Central Water Purifier in Service Compartment
- › Manabloc Water System for Entire Coach
- › Insulated Systems Compartment with Easy Access to Hook-Up
- › Water Pump Switch in Galley, Bathroom and Service Bay
- › Winterization Valving System
- › China Toilet
- › Super Service Center
- › Corian® Shower with Tile Accents and Shower Caddy
- › Shower Head Shut-Off
- › RV Sani-Con Tank Drainage System
- › Black Holding Tank Rinsing System
- › Outside Faucet with Hot and Cold Water
- › Power Water Hose Reel
- › Soap Dispenser in Kitchen
- › Insta-Hot® Water System in Kitchen

OPTIONS

- › Ozone Water Filter at Kitchen Sink
- › Bathtub

HEATING, VENTS AND AIR CONDITIONING

- › Aqua-Hot® Heating System
- › Three Low-Profile Ducted 15M BTU Roof Air Conditioners with Wall Thermostat and Heat Pump
- › Electronic Air Conditioner/Heat Climate Control System
- › Center Defroster Vents
- › 12V Attic Fan with Wall Thermostat and Rain Sensors in Bathroom, Private Lavatory and Kitchen

OPTIONS

- › Low-Profile 110V Baseboard Heater in Galley (N/A: Platinum IV, Cambridge IV)

WINDOWS, DOORS AND AWNINGS

- › Flush-Mounted Radius Dual Pane Safety Glass Dark Tinted Windows
- › Front Entry Door with Air Seal and Removable Top Screen
- › Keyless Remote Entry System with Pocket Remote
- › Girard® Front Door Awning
- › Topper Slide-Out Awnings, All Houses
- › Carefree® Manual Window Awnings
- › Roof-Mounted Girard® Automatic Front Patio Awning

OPTIONS

- › Roof-Mounted Girard® Automatic Rear Patio Awning
- › Girard® Window Awnings on All Slide-Out House Windows (Except in Private Bath Window)

SAFETY

- › Backup Alarm
- › Fire Extinguisher
- › Deadbolt Lock on Entrance Door
- › Lighted Interior and Exterior Grab Handles
- › 120V GFI Protected Circuit (Kitchen, Bath, Exterior)
- › LP Gas Detector
- › Smoke Detector
- › Carbon Monoxide Detector
- › Integrated Pilot and Co-Pilot Three-Point Seatbelts
- › Third Brake Safety Light
- › Egress Window
- › Security Safe
- › Deluxe Security System

OPTIONS

- › Collision Avoidance System



PLUMBING AND LP SYSTEMS

- › Central Water Purifier in Service Compartment
- › Manabloc Water System for Entire Coach
- › Insulated Systems Compartment with Easy Access to Hook-Up
- › Water Pump Switch in Galley, Bathroom and Service Bay
- › Winterization Valving System
- › China Toilet
- › Super Service Center
- › Corian® Shower with Tile Accents and Shower Caddy
- › Shower Head Shut-Off
- › RV Sani-Con Tank Drainage System
- › Black Holding Tank Rinsing System
- › Outside Faucet with Hot and Cold Water
- › Power Water Hose Reel
- › Soap Dispenser in Kitchen
- › Insta-Hot® Water System in Kitchen

OPTIONS

- › Ozone Water Filter at Kitchen Sink
- › Bathtub

HEATING, VENTS AND AIR CONDITIONING

- › Aqua-Hot® Heating System
- › Three Low-Profile Ducted 15M BTU Roof Air Conditioners with Wall Thermostat and Heat Pump
- › Electronic Air Conditioner/Heat Climate Control System
- › Center Defroster Vents
- › 12V Attic Fan with Wall Thermostat and Rain Sensors in Bathroom, Private Lavatory and Kitchen

OPTIONS

- › Low-Profile 110V Baseboard Heater in Galley (N/A: Platinum IV, Cambridge IV)

WINDOWS, DOORS AND AWNINGS

- › Flush-Mounted Radius Dual Pane Safety Glass Dark Tinted Windows
- › Front Entry Door with Air Seal and Removable Top Screen
- › Keyless Remote Entry System with Pocket Remote
- › Girard® Front Door Awning
- › Topper Slide-Out Awnings, All Houses
- › Carefree® Manual Window Awnings
- › Roof-Mounted Girard® Automatic Front Patio Awning

OPTIONS

- › Roof-Mounted Girard® Automatic Rear Patio Awning
- › Girard® Window Awnings on All Slide-Out House Windows (Except in Private Bath Window)

SAFETY

- › Backup Alarm
- › Fire Extinguisher
- › Deadbolt Lock on Entrance Door
- › Lighted Interior and Exterior Grab Handles
- › 120V GFI Protected Circuit (Kitchen, Bath, Exterior)
- › LP Gas Detector
- › Smoke Detector
- › Carbon Monoxide Detector
- › Integrated Pilot and Co-Pilot Three-Point Seatbelts
- › Third Brake Safety Light
- › Egress Window
- › Security Safe
- › Deluxe Security System

OPTIONS

- › Collision Avoidance System

BEING DIFFERENT MAKES ALL THE DIFFERENCE.

At Monaco, we always strive to be the best. And that means thinking outside the box. Giving you more of what you want in an RV. Like our exclusive Roadmaster chassis. Three factory-owned service centers. And programs like Monaco Financial Services and 24/7 roadside assistance. No other manufacturer can match Monaco's offerings. No one even comes close. Why not discover the difference for yourself? Go Monaco.

*"No other manufacturer can match
Monaco's offerings. No one even comes close."*



www.monacodifferent.com | 877-252-4666

DEALER:



MONACO™

DRIVING YOUR DREAM.

91320 Coburg Industrial Way, Coburg, OR 97408 | 800-634-0855

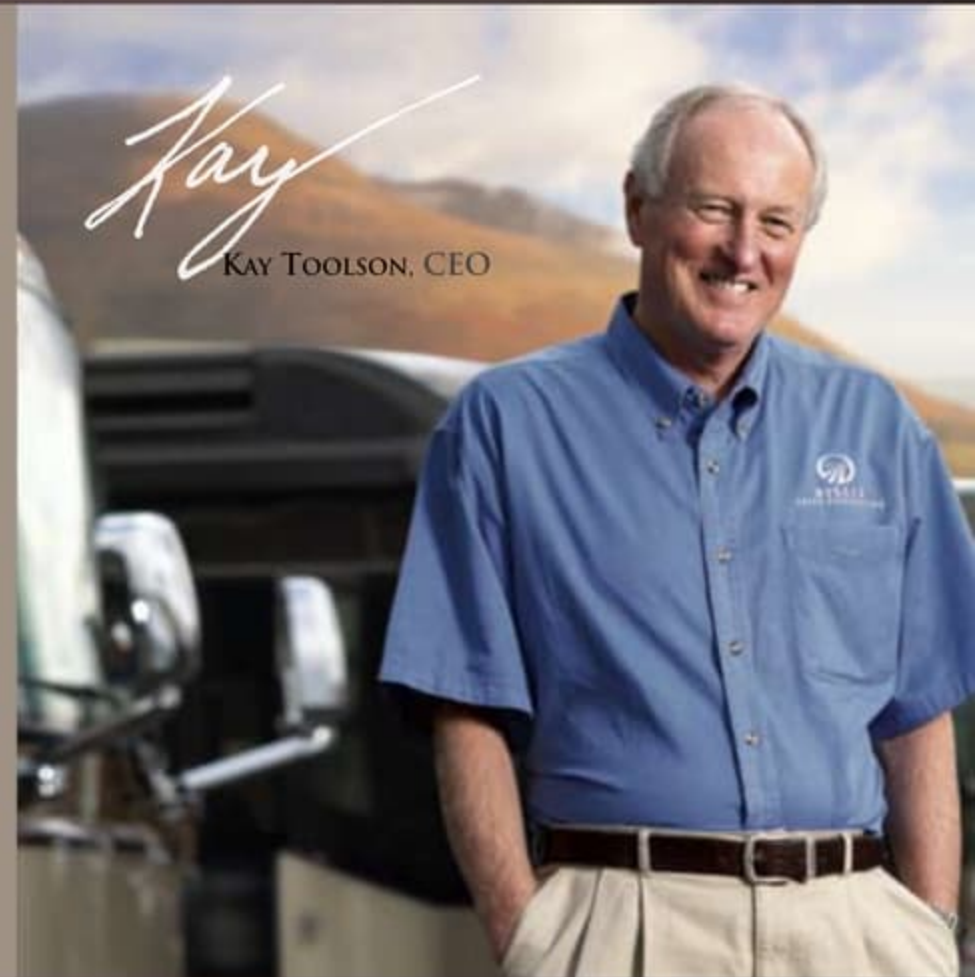
www.monacocoach.com

Monaco Coach Corporation is traded on the NYSE under the listing MNC. © 2007 NRV. BROMSIO

BEING DIFFERENT MAKES ALL THE DIFFERENCE.

At Monaco, we always strive to be the best. And that means thinking outside the box. Giving you more of what you want in an RV. Like our exclusive Roadmaster chassis. Three factory-owned service centers. And programs like Monaco Financial Services and 24/7 roadside assistance. No other manufacturer can match Monaco's offerings. No one even comes close. Why not discover the difference for yourself? Go Monaco.

“No other manufacturer can match Monaco's offerings. No one even comes close.”



www.monacodifferent.com | 877-252-4666

DEALER:



MONACO®

DRIVING YOUR DREAM.

91320 Coburg Industrial Way, Coburg, OR 97408 | 800 634-0855

www.monacocoach.com

Monaco Coach Corporation is traded on the NYSE under the listing MNC. | 1007 NPN: BROMSIG