



2009/08 Roadtrek™

Fuel Efficient Motorhomes You'll Love to Drive!™



#1 Selling Class B Motorhome!
Since 1990

You've got it ALL!



It's all yours with Roadtrek: the comforts of a larger motorhome with the parking ease, drivability and styling of a full-size SUV or luxury van.

Whether you're heading cross-country or cross-town, why not have all the comforts of home: your own bathroom, change room, kitchen, living room and bedroom. Add the performance, fuel economy, parking ease and towing capacity of a van, and you'll see why Roadtrek is the #1 selling class B motorhome (camper van) in North America - since 1990!

Comfort First - Always!

Getting there should be half the fun! With lumbar supports in the front captain's seats, ample legroom, automatic on/off headlights, a large panoramic windshield and oversized windows, you've got a vehicle that provides a superior driving experience. After a day on the road, you and your companions can bed down in home-style comfort. Roadtreks sleep up to four - with one or two single beds up front (requires optional folding mattresses), and up to a king-size bed in the rear.

Go ahead - Stretch Out!

After your day's travel, swivel the captain's seats around to open up a spacious seating area. Even if it's just the two of you, four seats at the front (on some models) provide more openness and space to eat, entertain or relax with another couple. A third seat

(on most models) and one of the front captain's seats provide an eating area for two at the front that's much easier to use than just two front captain's seats. Being able to dine at the front allows you to leave the rear made up for sleeping full time. You can wake up and retire at different times plus you don't have to set up a sofa or dinette to eat every morning, or make up a bed every night. Now that's real "utility"! (If you prefer more storage, the second row seat(s) can be replaced with an armoire and/or a removable wardrobe.)

Hold Your Head High!

By lowering the floor on Chevy models, there's plenty of headroom without requiring an exceedingly high roof (a lower roof provides better fuel economy, handling, overall height and appearance). It also allows for easier entry and exit and a more comfortable counter height. The aisle is up to 30" wide, so 2 people can pass with ease.

Privacy When You Need It!

Roadtrek 170 and 190 models let you create a spacious temporarily enclosed bathroom with a stand-up shower or change room in the aisle in a matter of seconds using bi-fold privacy doors. The hygienic sink liner allows you to perform personal hygiene in the galley sink, saving valuable space yet leaving the galley sink clean for food preparation. When not needed, the toilet and shower are concealed behind the privacy doors - leaving you more storage and aisle room. These same doors can also be used to create separate sleeping quarters at night. Our 210 and Sprinter based models offer a permanently



The counter top is made with granite or solid surfaces (so moderate scratches can be repaired). It offers ample clearance above, an under mounted sink with single lever faucet and flush cover/cutting board, and a recessed stove with flush cover. Beautifully crafted cinnamon cherry cabinetry with real cherry doors creates a rich and modern looking interior.

For more storage on vacations, remove the seat behind the driver and install our removable wardrobe. Just as easily, remove the wardrobe, return the lounge seat, and you have another front seat again.

The 190 model on the front cover features the SE package: Cadillac "Sterling Silver" GM factory paint, grey lower body paint and optional black-out paint between the windows. Compliment it with optional aluminum wheels, and bumper covers.



By swiveling both captains' seats, the cab is also a living area for eating, entertaining or just relaxing. Our cloverleaf table with extendable leaves combines the large surface area of a kitchen table with compact convenience of a smaller table.

enclosed bathroom with a toilet, vanity sink, and sit-down or stand-up shower all separate from the galley. Ingenious doors provide extra room in the bathroom while leaving the aisle clear for use. All centrally located, our bathrooms are accessible from either sleeping compartment (front or rear). Now that's private and convenient!

Pack Up & Pack It In!

There's no shortage of storage in a Roadtrek - up to 81 cubic feet in one model! - so you never have to leave those important extras behind. This is achieved in part by placing most of the water tanks below the floor. On some models there are also cavernous exterior storage compartments creating more interior living space.

Instead of a conventional roof top air conditioner, all Chevy based Roadtreks are equipped with a 'Dometic' heat pump (air conditioner and heater) built into the roof allowing you to park in many RV restricted areas. Ducts ensure comfort all around. And it's mounted outside for easy service access and external water drainage.

Unique... Innovative... Exceptional!

Roadtreks are a testament to original thinking - there are 15 Canadian and American patents to prove it!

The refrigerator vent is disguised and integrated into a black louvered grill in the galley window. The fresh water fill is securely located inside a door to prevent tampering. There's also the macerator sewage pump; cloverleaf dining table; temporarily enclosed bathroom/privacy area; stand-up aisle shower; lowered floor; built-in heat pump; exterior storage compartments below the floor; under-floor tanks; dual layer foam beds... and we're constantly innovating more!



You can never have too much storage space, so Roadtrek's "across the rear" storage area provides room for 2 sets of golf clubs or whatever you wish to bring along. The 210 and RS models feature a 2 cu. ft. storage trunk below the floor as well as a "pass through" door for long objects like skis or fishing rods.



Every Chevy based Roadtrek features large, exterior storage compartments. For added convenience there's even an exterior shower. The 210 model has a total of 7 cu. ft. of storage in three external drawers that slide out with convenient handles and locks.



Our three section floor plan provides many advantages over other designs: forward facing seating for up to 7; private sleeping sections; aisle maintained when beds are set up; all beds at floor level; easy access to central bathroom/privacy area; up to 30" wide aisle where 2 can pass with ease; separate eating/sleeping sections for 2; possible permanent sleeping area at rear; and choice of front or rear seating areas.

Get a Handle on This!



Roadtreks are nimble, responsive and a real pleasure to drive whether it's cruising down the highway, roaming back roads, maneuvering through congested traffic, or sliding into a campsite or parking space.

Enjoy outstanding handling for more pleasurable driving and greater safety. In addition to the excellent suspension, steering and braking capabilities of the chassis, Roadtreks have the laws of physics on their side. They have a much lower center of gravity than their taller cousins. Water tanks are located close to the axles for better weight distribution. With a much longer wheelbase (compared to the overall length) a Roadtrek provides unsurpassed highway stability. (A Roadtrek 190's length is only 58% longer than its wheelbase compared to 91% for a 22' B+ motorhome

with a 138" wheelbase.) Chevrolet's body-on-frame construction, a short rear overhang, "normal" and "towing" transmission modes, and an optional locking differential with external transmission cooler (n/a on 170 and Sprinter) provide superior towing performance.

With Roadtrek's relatively small size, parking is a breeze. Slide into a regular sized spot near your destination instead of searching for multiple spaces on the outskirts of the lot – or the outskirts of town. Enjoy intimate campsites in the mountains where larger motorhomes fear to tread – and aren't allowed. There's even a rear window defroster on most models to keep your rear view clear. Most motorhomes don't even have a rear window to keep clear! Since Chevy based Roadtreks don't look like motorhomes, you can often avoid RV parking restrictions.



Easy entry is provided by a wide side door that features a low entrance floor and higher standing height. Large windows all around increase visibility.



Chevys in upper row are shown with optional bumper covers that improve appearance. Above vehicles are without bumper covers.

A Roadtrek is more than just a family camper. With up to 7 forward facing seats with seatbelts, it makes a great second vehicle. The cost of owning and operating a Roadtrek is far lower than a second vehicle in the driveway AND a motorhome in storage! Consider their higher resale value (compared to other motorhomes) and lower depreciation rate than a car, and you've got an unrivaled value.

More GO for your DOUGH!

Roadtreks offer exceptional fuel economy thanks to their aerodynamic shape and lower overall size and weight. They really show up their bulkier class A, C and B+ cousins, as well as higher roof class B's.

The lowered floor on Chevy models allows a low, sweeping roof. The heat pump (air conditioner & heater) is built into the rear, with only the flush-mounted grills visible from the rear.

Broaden Your Adventures with Four-Wheel-Drive (in U.S. only)

Want to get away from the crowds, escape to areas off the beaten path? A remote campsite. Sunset on the beach. The hunting lodge. Tight mountain roads. Or just need the added traction and all-weather safety of 4WD for snow, sand or towing?

Snow covered mountain passes. Fishing on the beach. Towing a toy hauler to go four wheeling in the desert. Pulling the boat up that algae covered ramp.

190 models (in U.S. only) can be equipped with a Torsion Bar Independent Front Suspension 4WD system provided by Quigley Motor Co. based on the same system used on GM's pick-ups and full-size SUVs. Quigley has converted over 10,000 full-size GM and Ford vans to 4WD since the early 1970's. The system, which allows the front wheels to move up and down separately, provides the benefits of a minimal increase in vehicle height (1" front, 1.5" rear), improved road manners, better ride and handling, lower center of gravity, and no increase in turning radius. (A Roadtrek equipped with a 4WD system is intended for poor traction situations and moderate off-road use. It is NOT intended for extremely uneven terrain or serious off-road use.)

It's ALL For YOU!

The look will grab you, the comfort will seduce you, just one drive will convince you - how enjoyable, effortless and economical the Roadtrek experience truly is!



Choose from a 170, SS, 190, 210 or RS model. 190 model shown with optional black-out paint between the windows (also available on 170).



A Chevy based Roadtrek is one of the most aerodynamically efficient camper vans there is. Sleek lines, low profile and light weight optimize fuel efficiency and handling.



Dual rear doors allow for easy rear loading and swing a full 180° on 170 and 190 models and 270° on RS and SS models.

RS-Adventurous on the NEW Sprinter Van



Shortly after purchasing our [Roadtrek] Sprinter we took it on a "shakedown" trip; my wife and I and our yellow lab... I must admit that I had doubts about the advertised mileage we could expect but even climbing the higher elevations approaching the Continental divide we averaged 20½ MPG. After that we were up to 23-24... Coming across Oklahoma, we had a tail wind and got over 27 MPG. A total of 5700 miles without a hitch!!! GREAT RV!!!

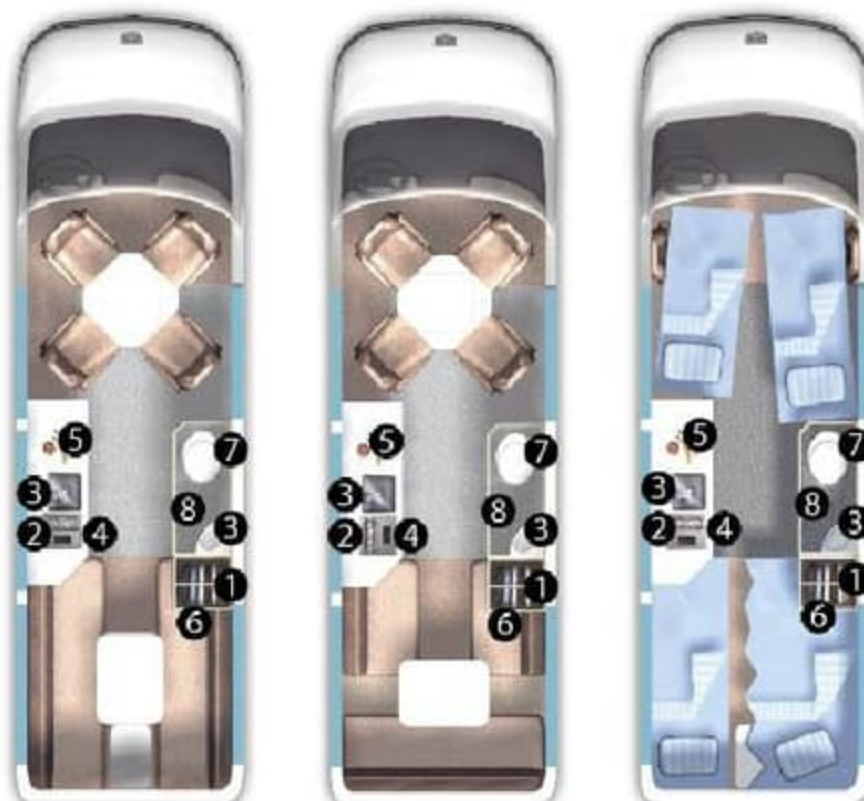
Raymond & Evelyn Schroder,
Mountain Home, Arkansas

Thank you for making our [RS]-Adventurous. This is our first try at a RV. We have not even rented before... We have put 12,000 miles on it. We use it on weekends and just took a 5 week trip... It gets great fuel mileage at about 21 going 75 miles per hour. We had no trouble with the mountains in Utah.

Toni Lyerly, West End,
North Carolina

RS-Adventurous

W/Optional Power Sofa



LEGEND

- 1 Wardrobe
- 2 Stove
- 3 Sink
- 4 Fridge
- 5 Microwave
- 6 TV
- 7 Toilet
- 8 Shower

German Automotive Excellence meets North American RV Ingenuity!

The RS-Adventurous combines legendary Mercedes-Benz engineering with the ingenious RV design creativity you've come to expect from Roadtrek.

The all new Sprinter van is designed and built by Mercedes for unsurpassed fuel economy, durability, safety, practicality, comfort and quality. Powered by a fuel efficient CRD turbo diesel V6 engine, you'll enjoy awesome fuel economy, long service intervals and great longevity. The new adaptive Electronic Stability Program (ESP) takes into account the vehicle's load as it uses numerous sensors to determine when the vehicle is starting to lose control and uses the traction control and anti-lock braking systems to regain control. Traction control also improves traction on slippery surfaces. Rack and pinion steering and a smooth shifting five-speed automatic transmission enhance driving pleasure. The space efficient engine bay and cab architecture maximize useable interior length. The almost vertical exterior sides maximize interior space within an overall exterior width comparable to other full-size vans. The wider taller sliding door allows even easier entry. The cab is now equipped with electronic climate control, tilt steering and factory "comfort seats". On long trips, you'll appreciate the 10-way adjustability, lumbar supports and headrests. And Mercedes-Benz quality. Need we say more?

Inside you'll find Roadtrek's timeless space utilization with a few new twists. The second row seating consists of comfortable lounge seats (do not convert to beds) or larger optional captain's seats for even greater comfort on or off the road. All four captain's seats swivel for optimal dining, game playing or just shootin' the breeze. The second row will even swivel towards the rear to give everyone a great view of the TV. Comfortable front sleeping is attained with our optional folding mattresses. Stored during the day, they rest on top of the front four seats to provide longer, flat and even sleeping surfaces. When you don't need them, just leave them at home.

With no gables or cabinets at either end of the galley, it's open from front to rear on the driver's side. Panoramic windows from front to rear provide daylight and openness unrivalled in any other class B. To maximize already generous storage space, a hanging pantry can be added to the rear end of the galley. The permanent bathroom's unique doors maximize aisle width when the bathroom's not in use. Yet when in use there's ample space inside while keeping the aisle clear. Inside you'll find a toilet, vanity sink and a sit-down or stand-up shower.

The spare tire is now stored on the vehicle underside just ahead of the rear axle. Without a Continental kit at the rear, the vehicle's length is minimized and easy access to both rear doors is maintained.

The ability to dine at the front lets you leave the rear beds made up for sleeping full time. People can wake up and retire at different times, plus you don't have to set up a dinette or sofa to eat every morning, or make up a bed every night. With no gables or cabinets at either end of the galley, it's open from front to rear.

The optional rear electric power sofa easily converts to a king-size or twin-like beds (shown) and can be reclined at the touch of a button to various positions for lounging. It provides comfortable belted seating for 2 extra passengers (U.S. only) for a total of 6 (4 in Canada). There's room for a 3rd and 4th (without belts) in the middle of the sofa and on the seat beside the galley for use when parked.



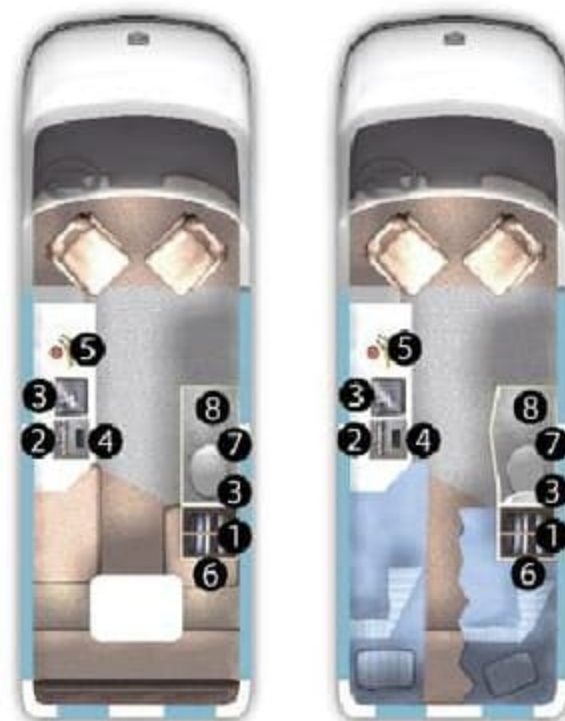
SS-Agile on the NEW Sprinter Van



[We] sold our home... Six months and [25,000 miles] later we returned [home]. The Roadtrek was phenomenal. Its layout and features allowed us great flexibility in our travels... The Roadtrek went everywhere and anywhere, with ease. It was comfortable, easy to drive, great mileage, great sleeping comfort and was spacious enough that even our 80 pound Lab was no trouble. In 6 months we spent all of 5 days in a motel!! ...we were completely inexperienced, but with the Roadtrek's extensive and user-friendly systems, RVing was a treat right from day one. Lest I forget, talk about holding its value: we sold our Roadtrek two years after we bought it for within \$1200 of what we paid for it!! What more can I say. The Roadtrek is one beautiful machine.

Lynda & David MacMahon, North York, Ontario

SS-Agile



LEGEND

- 1 Wardrobe
- 2 Stove
- 3 Sink
- 4 Fridge
- 5 Microwave
- 6 TV
- 7 Toilet
- 8 Shower

A Drive-Everyday Motorhome on the Mercedes-built "Short" Sprinter

The Roadtrek SS-Agile is based on the all new 144" wheelbase Sprinter 2500 van. At only 19½ feet long, the SS ("Short Sprinter") is perfect for those who want a vehicle that's really as easy to use everyday as a full-size conversion van or SUV but offers all the conveniences of a fully-equipped motorhome – and has great fuel economy!

The 144" wheelbase Sprinter van has the same specifications as the 170" wheelbase van used for our RS ("Regular Sprinter") model except the body and interior length are 40" shorter, overall length is 19' 5" and turning radius is 48' curb to curb (compared to 55' for RS).

Inside you'll find a great passenger vehicle for five within a fully-equipped class B that sleeps two. There is comfortable forward facing seating for five in the two front captain seats and rear electric power sofa. Just aft of the driver seat is a 59" long galley with eye-catching granite counter, recessed European-style propane stove with glass cover, under-mounted stainless steel sink, 3.8 cu. ft. 3-way refrigerator, convection/microwave oven and optional coffee maker.

Opposite the galley and aft of the entry behind the front passenger seat is a permanent bathroom. Its unique doors allow ample aisle width when the bathroom's not in use. But when in use the doors allow extra space inside while keeping the aisle clear. Inside the bathroom you'll find a marine toilet, vanity sink that slides out over the toilet, and a sit-down shower (or stand-up for smaller people).

Like other models, the rear sofa easily converts to a king-size bed or twin-like beds (we say "twin-like" since they are separated beside your legs only when you're sleeping). The driver side is 6' 4" long, the passenger side 6' long.

Compact exterior size... great fuel economy... comfortable seating for five... interior openness and livability... and all the features of a typical motorhome. The SS-Agile provides an unrivalled combination of use-every-day driving and parking ease with the conveniences of a fully-equipped motorhome. Its possible uses are endless! Add the proven popularity of the Mercedes-built Sprinter and you've got another winner from Roadtrek!

With two captain seats at the front and a power sofa at the rear, the SS-Agile makes a great passenger vehicle for five. Add an expansive galley and many other features and you've got a nice motorhome for two. With no gables or cabinets at either end of the galley, it's open from front to rear.

The standard rear electric power sofa provides comfortable belted seating for 3 extra passengers for a total of 5. There's room for a 4th (without belts) on the seat beside the galley for use when parked. At the touch of a button the sofa can be reclined to many positions for lounging or all the way flat for a king-size or twin-like beds. Ample storage below is accessible through the rear doors.



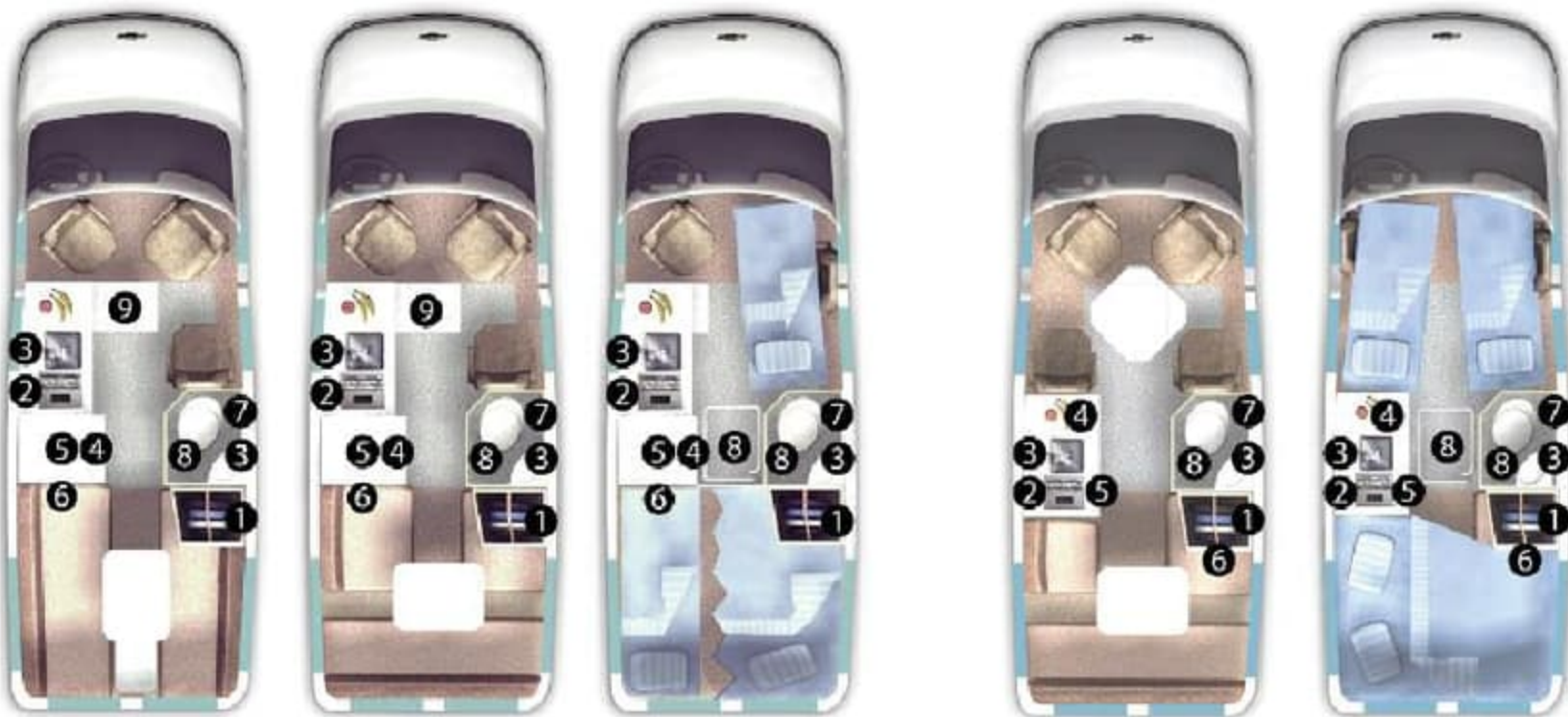
210-Popular & 210-Versatile



210-Popular

W/Optional
Power Sofa

210-Versatile



LEGEND

- 1 Wardrobe
- 2 Stove
- 3 Sink
- 4 Fridge
- 5 Microwave
- 6 TV
- 7 Toilet
- 8 Shower
- 9 Sliding Table

The Ultimate Widebody Class B!

Our 210 models represent the ultimate fusion of design, engineering and functionality in the class B segment. Built on the Chevrolet Express extended van, they are true class B motorhomes.

We start with a full van body and then extend the frame 18" behind the rear wheels increasing the overall length to 21' 11". Then we add a fully-painted steel-cage-reinforced fiberglass body. After the cab, the body widens gradually to a maximum of 9" at the rear wheels then tapers to the rear. The 155" long wheelbase allows for amazing ride quality and handling without having to use dual rear wheels. We've retained the original van side entry door and rear doors for easier loading, better air circulation, single door key and power locks.

Inside there's more of everything: more headroom (74"), more interior space, more room in the permanently enclosed bathroom, more storage space, more sleeping area, a larger refrigerator (raised in the 210-Popular for easier access!), a large convection/microwave oven (microwave only in 210-Versatile) and an optional built-in coffee maker. The exterior features four hidden drawers for easy access to auxiliary batteries, external connections and storage.

The 210-Popular is the perfect model for those who want the ultimate in sleeping comfort for just two (or three) people with seating for up to five (three in Canada). With forward facing seating for three and sleeping for one at the front, the rear features a dinette or optional power sofa with seating for two that converts to a luxurious king-size bed or convenient twins.

If you want the option to take friends or family along, or want room to entertain others you meet along the way, the 210-Versatile is perfect. Two captain's seats and two forward facing lounge seats provide comfortable, belted seating for four up front. Simply swivel the captain's seats and with the cloverleaf dining table you have the best seats in the house for whatever is on the menu - dinner, conversation or games.

The power sofa at the back does triple duty. It makes a great place to watch a movie with the home theatre system and optional flat screen TV, provides belted seating for another two (U.S. only) and makes into an 80" x 60" queen-size bed. It's perfect for those who want a larger bed than the 190-Versatile but don't want to lose seating for four at the front.

So when you ask yourself "Where do I want to go today?", know that the 210 has it all and then some.

The 210-Popular's expanded galley has a larger window and a longer and deeper solid-surface counter. A convection/microwave oven and 5 cu.ft. refrigerator are located after the galley to create more space for a handy pull-out table, four deep drawers and a huge cupboard below the counter. The twin beds are wider (30") and the king bed is wider as well (6'8").

While the 210-Versatile follows the same general layout as our 190-Versatile model, increased headroom and a wider interior are immediately noticeable. The power sofa converts to a luxurious queen-size bed (80" x 60") for a great night's sleep.



190-Popular & 190-Versatile

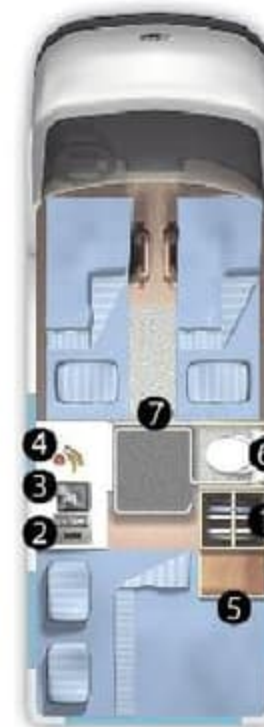


190-Popular

190-Versatile

This is pure and simple, a fan letter, a testimony to both your product and your service. I purchased a Roadtrek and after 88,000 miles and 6 years, I am sold on its reliability, excellent workmanship and quality appointments. It has all the conveniences I need—no more and no less... Now, when I go to purchase another RV, I will not waste time looking around—I will definitely purchase another Roadtrek.

*Ellwood B. Jacoby,
Cherry Hill, New Jersey*



LEGEND

- 1 Wardrobe
- 2 Stove
- 3 Sink
- 4 Fridge/Microwave
- 5 TV
- 6 Toilet
- 7 Privacy Door
- 8 Shower

The Original Roadtreks: A Balance of Interior Space & Exterior Size!

Do you want an ideal way to leave the rest of the world behind without sacrificing creature comforts or driving and parking convenience?

Based on the great handling Chevrolet Express 3500 extended van, the 190 models set the mood whether you're lazing down endless back country roads, or searching for that restaurant the locals have been raving about.

When it's cruising for just the two of you, the 190-Popular really comes into its own. You'll be cheerful and rested in the front captain's seats when you watch dusk silhouette the road ahead, and you're seeking that perfect spot to spend the night. When it's time to turn in, the rear dinette or optional power sofa converts to a sumptuous king-size bed (6'4" long on one side) or into two comfy twin beds (6'4" & 6'0" long). For extra passengers, there are forward facing seatbelts at the rear (two with dinette, three with sofa).

Round those features off with a full-length wardrobe, loads of storage, a front dining table and a well-equipped galley - just pack up and you can hit the road for weeks.

Now that's romance!

The 190-Versatile is the perfect companion for daily errands, vacations or weekend adventures! Whether it's the whole family or just the two of you, enjoy the world in comfort and style.

Check this out! Two captain's seats and two forward facing lounge seats make up seating for four as you navigate your way down winding trails. At night, tuck into three beds that provide sleeping for up to four (requires optional folding mattresses at front). The power sofa at the back does triple duty. It makes a great place to watch a movie with the home theatre system and optional flat screen TV, provides belted seating for another three and makes into a 74" double bed. The privacy doors let you watch some TV or curl up with a book without disturbing the sleepers up front.

With the 190-Versatile, the secret is in its name. It is truly "Versatile". Whether "roughing it" at a campground or soaking up the rays at the beach, traveling takes on new meaning when you have all the comforts and conveniences of home within an economical and easy to drive van.

When you're not off blazing new trails, the 190-Versatile is the perfect second family vehicle. Remember - convenient forward facing seating for up to seven. How better to take on the challenges of everyday living? The 190-Versatile, your answer to the call of the road!

*Available in
4-wheel drive!*

The 190 at left is pictured with our new dramatic looking LE package: black exterior paint with chrome front billet grill, "chrome" port holes on fenders and black carbon fiber dash trim (extras not shown). These great looking 190 models will be built for a limited time only.

The ability to dine at the front lets you leave the rear beds made up for sleeping full time. People can wake up and retire at different times, plus you don't have to set up

a dinette or sofa to eat every morning, or make up a bed every night.

The 190-Popular offers the flexibility of separate twin beds (shown) or an enormous king-size bed (up to 6'4" x 6'1"). The optional premium brand flat screen TV allows you to watch TV in bed or swing it into the aisle to watch in comfort from the front captain's seats.



170-Popular



This is the best vehicle purchase I have ever made! I needed a vehicle that could take me to work every day, fit in the parking garage at work, not violate my neighbors parking restrictions, and be a full feature motobhome. Our 170-Popular does all this and more. It is very well built and laid out. We just love it. I smile every day as I drive it to work and look forward to our next trip.

Patrick Shubird, Daphne, Alabama

I suffered a stroke at the age of 55 and was devastated that my traveling days were over. Little did we know that a vehicle such as the Roadtrek would be available to us. It changed our life. We bought the 170 and just love it. It fits our needs to a tee. Just right for the two of us and our cat. We go... every summer for about 2 months and... for one month every winter. It is wonderful being alive and part of the camper's world.

Mr & Mrs Coffeys, Annapolis, Maryland

170-Popular



LEGEND

- 1 Wardrobe
- 2 Stove
- 3 Sink
- 4 Fridge
- 5 TV/DVD
- 6 Toilet
- 7 Privacy Door
- 8 Shower

The Ultimate SUV (Seriously Useful Vehicle)!

Roadtrek's most compelling alternative to SUVs and conversion vans is here!

The 170-Popular on the great handling Chevrolet Express 2500 regular van is the easiest of all Roadtreks to maneuver through traffic and fit into those car sized parking spots. The 170 has many features you take for granted in a car, like better fuel economy than most camper vans (never mind larger motorhomes), along with the full-size motorhome features you would expect from any Roadtrek.

The 170-Popular seats five and sleeps three with ease (optional folding mattress required at front). The rear L-shaped lounge converts easily to a 6'2" double bed that is both spacious and comfortable. With "across the rear" storage below the bed, you have all kinds of room for the things you want to bring along. The front cloverleaf dining table stores neatly out of the way, creating even more room to stretch out and relax.

Add an optional flat screen TV and DVD player and you have an entertainment system that takes up very little room while providing you with something to do on a rainy day. The TV rotates into the aisle so you can watch it from the front captain's seats – the most comfortable seats in the house.

Whether you're on your way to the soccer game with the kids and need a change room, or heading out of town for a weekend getaway, you will appreciate the driveability, parking ease and efficiency of the 170. It's the perfect second vehicle that combines convenience, comfort and value all in one affordable package.

SE, LX and LE Packages

The 190 with SE package on page 4 includes custom ordered Cadillac "Sterling Silver" GM factory paint, grey paint on the lower body and optional black-out sections between the windows (170 and 190 only). The same package is available on all other models.

The LX package, pictured on the 210 on page 5, features "Sandstone" GM paint and charcoal paint on the lower body. It's also available on other Chevy based models.

The 190 on page 12 is equipped with our dramatic looking LE package which features black exterior paint with chrome front billet grill, "chrome" port holes on fenders and black carbon fiber dash trim (extras not shown). These great looking 190 models will be built for a limited time only.

We covered a total of 7000 miles in 20 days and thoroughly enjoyed every mile... The Roadtrek performed admirably throughout the trip, and at no time did we wish we were traveling in any other type of RV. We are convinced that for 2 or 3 people the Roadtrek 170 is the perfect vehicle, combining all the best features of a large camping rig with the worry-free maneuverability of a van... Camping in the Roadtrek was so simple and convenient. No jacks to struggle with, and so easy to park and level. The primitive campsites were the simplest of all. Just pull in and the fully self-contained unit is all set. ...the bed was far better than we had dared hope for in a camping unit. My wife and I highly recommend the Roadtrek 170 as a money saving combined camping rig/second car option to anyone interested in part-time excursions into the great outdoors... Thank you all for building such a fine and attractive motorhome as the Roadtrek 170. Keep up the good work and HAPPY TREKKING to all.

James & Julie Mager, Isbpeping, Michigan

With three seats at the front and an L-shaped lounge at the rear, the 170-Popular makes a great passenger vehicle for five. Add a fully-equipped galley and many other features and you've got a nice motorhome for two or three.

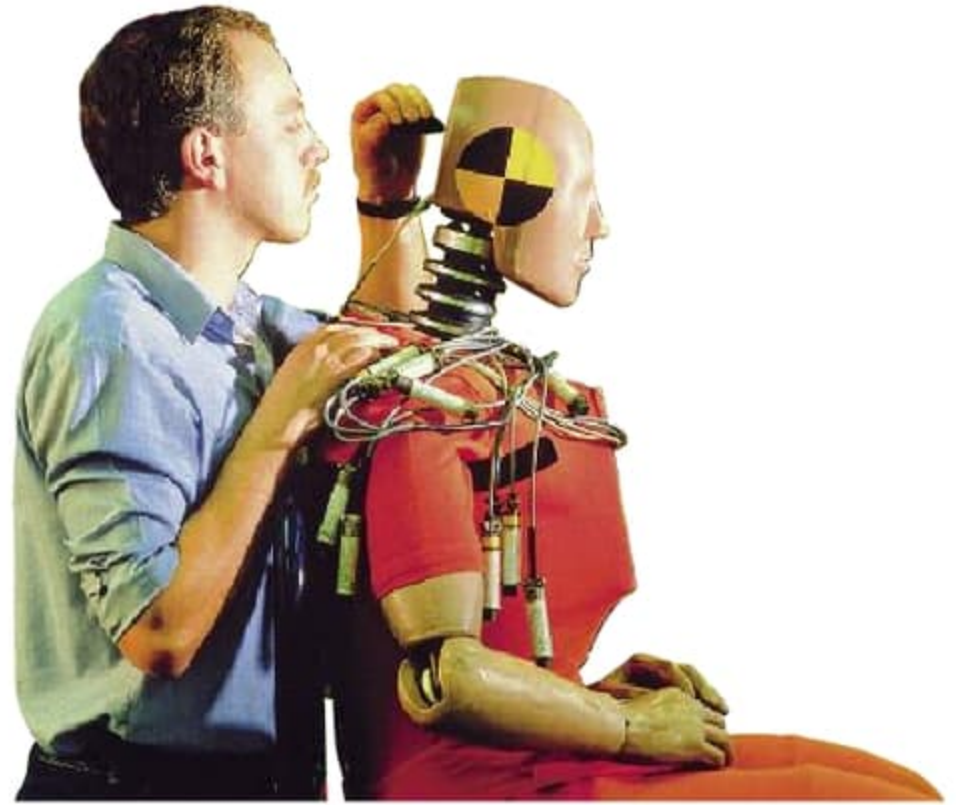


Our rear L-shaped lounge converts to a 6'2" double bed. By day it provides a comfortable place to eat, watch TV, play games, or just relax with a good book.



A Commitment to Safety

We are serious about manufacturing the safest class B motorhomes. In addition to safety features like air bags, electronic stability program (on Sprinter), tire pressure monitoring system, theft deterrent system, anti-lock brakes and automatic on/off headlights, we hire independent engineering firms to test our vehicles. The results follow.



TESTING RELATED TO FUEL SYSTEM MODIFICATION TO ACCOMMODATE LOWERED FLOOR

The fuel tank on all GM vans (and some van cab and chassis) is located between the axles (mid-ship). To enjoy the benefits of a lowered floor (improved fuel economy, handling, appearance, overall height, galley counter height and ease of entry and exit), we simply lowered the original tank by 1.5". The tank's clearance is still higher than the running boards, which have proved sufficient for years.

You won't enjoy the "off road" clearance of a truck, but you'll be fine if you don't drive anywhere you wouldn't drive a car.

To modify the fuel system, GM requires that we meet or exceed very stringent safety and engineering standards. This mandatory testing was successfully conducted on Chevy based Roadtreks:

Fuel System Integrity Crash Testing (FMVSS 301) is intended to reduce deaths and injuries from fires from fuel spillage during and after crashes. After each of three impacts (frontal, side and rear), the test vehicle is rotated upon its axis for 20 minutes can leak no more than one ounce (28 g) of fuel per minute to pass. Ours did not leak any fuel.

Exhaust Emission Testing (California Air Resources Board): Today's vehicles require increasingly stringent pollution control equipment. Testing ensures that exhaust emissions do not exceed limitations.

Fuel System Evaporative Emission Testing (CARB): Evaporation of fuel is a source of pollution that must be strictly limited. The entire fuel system (fill, tank, lines, etc.) cannot leak more than the equivalent of a pinhole.



This photo shows the rear impact test. The test vehicle was impacted by a moving barrier at 30-mph (48 km/h). The entire fuel system was then inspected for leakage. Our test vehicle did not leak any fuel.



For frontal impact testing, the test vehicle impacted a fixed barrier at 30-mph (48 km/h). Again our test vehicle did not leak any fuel.



Occupant head protection testing is intended to ensure occupants have additional head protection from interior components during crashes.

Second Generation On Board Diagnostics (OBDII) Verification (CARB, Vehicle Code: Sec. 27156): Today's vehicles are equipped with sensors and actuators that sense the operation of various components and actuate others to maintain optimal performance. On board computers are capable of monitoring all of the sensors and actuators to determine whether they are working as intended. Included are those that detect fuel evaporation, as described above. It must be verified that the OBDII system is functioning properly.

OTHER MANDATORY TESTS

New Occupant Head Protection Testing (FMVSS 201U) is intended to provide occupants with additional head protection to interior pillars, side rails, headers and roofs during crashes. It confirms adequate impact absorbing design and special materials are used in the subject areas to reduce head injuries. Successful testing involves launching a test "head" at numerous target points in the vehicle's interior without exceeding limited thresholds of "injury" to the "head". All Chevy based Roadtreks have passed these very stringent tests. Some other RV manufacturers still cannot make this claim.

Seat Belt Testing (FMVSS 210) is supposed to reduce deaths and injuries during crashes. It confirms proper seat belt location for effective occupant restraint, and minimizes the possibility of seat belt anchorage failures. All Roadtrek seat belts meet these requirements.

Seating System Testing (FMVSS 207) is done to reduce deaths and injuries during crashes. It minimizes the possibility of failure of the seats and their attachments as well as installation problems. All Roadtrek seating meets or exceeds these requirements.

Flammability Testing (FMVSS 302) is performed to reduce deaths and injuries caused by fires, especially those originating from the vehicle's interior from sources such as matches or cigarettes. Testing confirms that the burn rate of affected interior materials does not exceed specified maximums. All applicable materials used in Roadtrek interiors meet or exceed the specified burn resistance requirements.

VOLUNTARY TESTING

There are numerous safety standards that apply to lighter vehicles, such as passenger cars, but not to heavier vehicles, such as class B motorhomes. They do not apply for various reasons, such as the inherent safety advantage of heavier vehicles. In order to "raise the bar" on the safety, we have voluntarily conducted numerous tests, all successful, that are not required by law, nor done by most of our competitors.

Dynamic Rollover Testing (part of FMVSS 208) is intended to reduce deaths and injuries from occupants and their appendages not remaining inside the passenger compartment during rollover accidents. It is conducted by placing the test vehicle on a movable platform perpendicular to the platform's line of travel. To help start the rollover, the test vehicle rests at a 23 degree lateral incline with the tires against a "trip" flange. The platform is propelled down a test track to 30 mph (48 km/h) and stopped in such a way that the vehicle is propelled from the platform. Although the platform speed and height of the trip flange were increased above the requirement, the Roadtrek would not rollover. This is considered a pass (in a rollover situation, what safer vehicle to be in than one that does not rollover?).

Roof Crush Resistance Testing (FMVSS 216) is supposed to reduce deaths and injuries due to crushing of the roof into the passenger compartment during rollover accidents. It was conducted on the corner of the roof at the top of the A pillar (between the windshield and front door windows) and also at the top of the outer roof window.

"Automotive Manufacturer Style" Durability Testing: Durability is more an issue of customer satisfaction and value, but improved reliability can result in increased safety (less breakdowns, etc.). Automotive manufacturers conduct extensive durability testing where they put the equivalent of up to 120,000 miles (190,000 km) of wear on a vehicle in a short period of time as part of the design process. By having durability testing conducted for us, numerous design improvements -



These 2 photos depict simultaneous seat belt pull testing and seating system testing. Seat belt testing confirms proper seat belt location and minimizes the possibility of anchorage failures. Seating system testing verifies the integrity of the seats, their attachments, mounting hardware and installation.

Seating system testing minimizes the possibility of failure of the seats, their attachments and their installation.

which would only have become apparent during the normal life of the first ones of each new model built and sold - were quickly identified and implemented. We are not aware of any other RV manufacturers that conduct the same tests on its products (probably due to the costs involved).

SAFETY FIRST - always!

Your safety is our priority! No other manufacturer of class B motorhomes invests so much time, effort and money to ensure the product we offer you is as safe as can be. When shopping for your next motorhome, select the one that has been proven safe... the Roadtrek.

I had an accident with my Roadtrek. The reason I'm telling you about my unfortunate mishap is to applaud the [crash test] report in the last pages of the Roadtrek sales brochure... I'm very happy you made my Roadtrek as strong as you did. It not only drives like a van, it "Protects Like a Tank"!! Why would anyone buy any other class B motorhome?

Reed E Cox, Pace, Florida



Dynamic rollover testing is intended to reduce deaths and injuries from occupants and their appendages not remaining within the passenger compartment during rollover accidents.



Roof crush resistance testing is intended to reduce deaths and injuries from roof crushing during rollover accidents.



"Automotive manufacturer" style durability testing allowed us to quickly identify and implement numerous design improvements which would otherwise only become apparent during the normal life of the first ones of each new model built and sold.

THE MANY FEATURES OF ROADTREK



Optional Continental kit looks great and provides more interior storage. It's mounted on the receiver to avoid stress and rust on the door and off centre to the trailer hitch to allow towing and access to one door. To access the other door, simply remove the hinge pin to lower the spare tire. To access the tire, just unclasp the tire cover.

All Roadtreks feature a fully painted roof that looks great and offers a long durable life.



A large capacity auxiliary lead acid 12V battery is totally concealed yet easily accessible on slide-out tray. A second auxiliary battery is included on 190 models.



210 and Sprinter based models feature two auxiliary lead acid deep cycle 6V batteries with 220 total amp hours. On 210 models they're located in a convenient slide-out drawer.



Frameless awning windows are better looking, reduce wind noise, improve aerodynamics, and provide superior air circulation even during foul weather. Their larger size provides a better view from inside. The Integrated Venting System (most Chevy models) provides inconspicuous ventilation of the refrigerator.



External propane barbecue connection with quick disconnect.



The macerator sewage pump chops up any solids and tissue and ejects the entire contents through a convenient 1 1/4" hose. No mess, no fuss.



There is a separate compartment for an exterior shower and city water connection with quick disconnect. The 210, RS and SS feature a detachable power cord for trips away from the campsite.

THE MANY FEATURES OF ROADTREK



RS and SS models feature a power step at the side entry that extends/retracts with the opening and closing of the sliding entry door. An override switch allows the step to be left extended while parked.



To increase versatility, we've added a second fresh water tank inside 190 and 210 models. By using anti-freeze in the black and grey water tanks, the water system can be used in moderate sub-freezing conditions.



Optional folding mattresses provide flat sleeping for two on top of front captain seats and lounge seats. During the day both store easily at the foot end of the rear bed.



Optional folding mattresses are also available for optional four front captain seats as well. They also store easily at the foot end of the rear bed below the suspended wardrobe.



You can watch TV from the rear lounge or bed with our optional premium brand 19" flat screen TV. It rotates to allow viewing from the front captain's seats – the most comfortable places to sit. A standard home theatre system (or optional DVD player with 170) resides in a nearby cabinet.



A removable cover in Chevy based Roadtreks reveals a trough with a drain that spans the lowered floor and prevents water from leaving the shower area.



Chevy based Roadtreks come equipped with 5 spoke chrome look wheel covers.



Dress up your Roadtrek with optional sporty aluminum wheels for Chevy



or Sprinter based models.

THE MANY FEATURES OF ROADTREK



The 210's permanent bathroom features complete privacy, toilet, vanity sink with storage cabinet, mirror and 110V receptacle. The shower can be used as a sit-down shower with the door closed or used in the aisle as a stand-up shower.



The RS's permanent bathroom's unique doors maximize aisle width when the bathroom's not in use. Yet when in use there's ample space inside while keeping the aisle clear. Inside you'll find a toilet, vanity sink, slide-out counter over the top drawer, mirror, 110V receptacle and a sit-down or stand-up shower.



Like the RS, the SS's permanent bathroom's unique doors maximize aisle width when the bathroom's not in use. When in use there's adequate space inside while keeping the aisle clear. Inside there's a toilet with a slide-out vanity sink above, mirror, and a sit-down shower (or stand-up for shorter people).



Any Roadtrek except the SS can be equipped with our optional full-height armoire. It is interchangeable with the passenger side lounge seat and offers extra hanging or shelf space on numerous adjustable shelves and drawers.



All Chevy based models feature a stand-up shower in the aisle. What other camper van can give you such a large area to shower in?



A 'Dometic' heat pump (air conditioner & heater) built into a recess in the roof cools the interior while maintaining Chevy based Roadtreks' aerodynamic shape and sleek roofline. In many restricted communities, vehicles with roof mounted air conditioners are not permitted. Our recessed heat pump allows our Chevy based motorhomes to be perceived as just vans and in most cases are permitted to park where many other motorhomes are not.



170 and 190 models, which feature temporary bathrooms, are equipped with our hygienic sink liner. Just insert the hygienic liner into the galley sink to perform personal hygiene. When finished, remove the liner, leaving your galley sink clean and untouched for food preparation.



The heat pump (air conditioner & heater) with ducts to the front and rear bed areas is mounted outside of Chevy based Roadtreks for easy service access and external water drainage.

Our Commitment to You

The Roadtrek is the result of one man's determination to get exactly what he wanted in an RV.

Having no interest in being a "weekend bus driver", Mr. Jac Hanemaayer of Kitchener, Ontario, knew a large class A or C motorhome was not for him. Yet he was not about to trade the comfort and amenities they offered for the convenience and mobility of a van. Unable to find the best of both worlds in the marketplace, he did what came naturally to him. In 1974, he designed a vehicle for himself and had it built by a fledgling local camper van manufacturer, Home & Park Vehicles Ltd.

He was so pleased with the result that he bought the company.

Being a true innovator, Mr. Hanemaayer was never content. In 1980, he completely redesigned the vehicle, incorporating his now famous sweeping roofline, lowered floor and three-section floor plan. The Roadtrek Motorhome Van was born.

With a commitment to continually refining its vehicles so they are one step ahead of the competition, Roadtrek grew to become the best selling North American camper van (since 1990).



A Father's Dream... A Son's Reality – Jac and Jeff Hanemaayer

I have always owned one type of RV or another over the past 30 years, from class A to class C. I consider the Roadtrek the best engineered, developed and constructed RV for its size of any I have ever owned or seen on the market.

Gary & Jane Alden, Destin, Florida

I would like to tell you how very happy I am with all the folks at Roadtrek that I have dealt with. In over 30 years of RVing, and four motorhomes, I was never so well treated. Thank you for the caliber people you have.

Dan O'Connell, Ohio

Thank you and your staff for inviting us to participate in Roadtrek's 30th Anniversary celebration... it was such an honor and a privilege to have been included in such a historic and prestigious event... even the heat could not dampen the spirits, the enthusiasm, and the gaiety of the event. It was first class all the way, beginning with the invitation, to the catered meals, to the entertainment! We especially enjoyed the General Jackson Showboat luncheon (the entertainment was fantastic) and the cruise on the Cumberland River was delightful. The Grand Ole Opry was a first-time for us; it was very interesting and most impressive. Again thank you and best wishes to all of you for your continued success on a terrific motorhome.

Gini & Jack Huggins, Silver Lake, Ohio

"Quality Trek" Story

Along with its truly innovative design, an unwavering commitment to quality and continuous improvement is the key to Roadtrek's success over the years. In fact, Roadtrek was the first RV manufacturer in North America to obtain registration to the rigorous international standard ISO9001:2000(E). ISO (the International Organization for Standardization) is a worldwide federation of national standards bodies. The ISO 9001:2000(E) standard is a complete Quality Management System Standard with an emphasis on effective processes and continuous improvement.

In addition, every Roadtrek meets and often exceeds rigid RVIA, CSA, UL, FMVSS, CMVSS, General Motors and DaimlerChrysler standards set for recreational vehicles. Each Roadtrek is also subjected to over 200 quality checks, inspections and tests. On top of all this, employees are responsible for the quality of their own work. Every vehicle is individually built with care and attention to detail.

Backed with Pride

It is fitting that the 'best built' should be the 'best backed'. To reflect the confidence we have in our vehicles, Roadtrek offers a 4 year or 48,000 mile or 80,000 km limited motorhome warranty.

Loyalty Speaks Volumes

What better vote of confidence can a camper van receive, than one given by the people who use it? In a comprehensive study of nearly 2000 Roadtrek owners, 85% of those looking to buy another RV planned to buy another Roadtrek. Some of them for a second, third, fourth and even fifth time!

A Father's Dream... A Son's Reality

Despite growth in sales and expansion of markets, Roadtrek is still run by people who are passionate about their products and the people who buy them.

Our staff has access to company demonstrators to use for their own vacations. This is an excellent way to get feedback for product improvements.

Founder Jac Hanemaayer still participates in the development of the vehicle he originated. His son Jeff started as a summer student employee and knows the product and industry inside out. In his previous position as President, Jeff oversaw the company's growth from 1985 to 2000. He continues to guide Roadtrek as Chairman while Roadtrek's popularity soars to new heights.

To both Jac and Jeff, research and development still mean taking your product out and putting it through its paces. They both use their own Roadtreks avidly. They know that living with a Roadtrek helps to stimulate creativity in figuring out those special changes that make a good thing even better!

More than just a Sale

Jeff is committed to more than just selling and refining the excellent vehicles that are Roadtreks. The after-sales service, both from the factory and dealer network, is dedicated to make owning a Roadtrek a long-term positive experience.

Taking this Show on the Road

Jeff knows that customer service is more than just a 1-800 number. He believes in meeting face-to-face with the people who put their faith and hard-earned money into a Roadtrek. It's not uncommon to see Jeff at RV shows and Roadtrek owner club

rallies, personally leading discussions and answering questions. It's his commitment to Roadtrek - and to you!

A lot of Happy Campers

Buying a Roadtrek means even more than becoming part of the 'Roadtrek-ker' family - it means a chance to join a North America-wide owner's club: Roadtrek International. With the ongoing support and assistance of Roadtrek, the club became an active chapter of the FMCA in 1993. It is now comprised of 2000 vehicles (about 4000 people) and is one of the largest chapters of the FMCA (and the only camper van chapter). Members meet new friends with common interests and take part in rallies, group outings, tours and suppers where they exchange Roadtrek experiences and share ideas.



Member #C003790

Still driving ahead

Roadtrek is the best-selling camper van in North America but Jeff doesn't intend to stop here. He has a winning formula designed to take the RV industry by storm: exceptional employees, an innovative, high quality product, a state-of-the-art production facility, a superior dealer network, and his commitment to the 'Roadtrek-ker' family.

Following these principles, the 'Fuel Efficient Motorhomes You'll Love to Drive' are destined to - one day soon - become the best selling camper vans in the world!



We try to keep a large selection of finished units on hand so, if your dealer doesn't have what you want, you don't have to wait long to take to the highway in your new Roadtrek



Roadtrek Motorhomes 30th Anniversary Rally, Nashville, Tennessee, July, 2004



1978 Home & Park Holiday Cruiser.

"My goal is to offer you an unrivaled combination of product design, quality, price, and customer service. Period."

*Jeff Hanemaayer, Chairman,
Roadtrek Motorhomes*

Interior Features	170 // 190 Chevrolet	210 Chevrolet	RS // SS Sprinter	Roadtrek Benefits
large lowered floor	64" // 68" x 35" x 2"	80" x 35" x 2"	not available	more standing height, easier entry & exit, better counter height
aisle width	30"	26"	28"	2 people can pass with ease
sleeping capacity	3 or 4 people	3 or 4 people	2 or 4 people	can sleep extra people if desired
size of rear bed	up to 76" x 73"	76" x 80"	78" (max.) x 69"	bigger than others
bed cushion foam	5" dual density	5" dual density	5" dual density	comfortable box-spring effect
comfortable eating area at front (separate from sleeping)	large table with 3 to 4 seats	large table with 3 to 4 seats	large table with 4 seats // not available	avoid making up rear seating area, get up & retire at different times
bathroom	large temporary	permanently enclosed	permanently enclosed	choice of most space & storage or spacious without wasting space
shower	stand-up in aisle	stand-up in aisle or sit-down in bath	sit-down or stand-up in bathroom	room to shower in your own van if needed or desired
propane capacity	45 lbs.	45 lbs.	50 // 45 lbs.	fill up propane less often, longer trips
storage volume (std./ w/opts.)	up to 62/80 cu. ft.	up to 74/81 cu. ft.	up to 55/81//47/50cu ft	room for everything you need
heat pump w/ducts to rear	standard	standard	not available	also provides air cond. & heating
refrigerator - automatic	3.0 cu. ft. 3-way	4.0 cu. ft. 3-way	3.8 cu. ft. 3-way	roomier & no dead batteries
oven	microwave	microwave/convection	microwave/convection	can toast and bake as well
inverter w/charger	750W, 3 step charger	750W, 3 step charger	750W, 3 step charger	110V w/o generator or hook-up
auxiliary batteries	one // two 12V	two 6V	two 6V	longer battery life w/o gen. or hook-up
counter tops	solid surface // granite	solid surface	granite	better looks, scratches can be repaired
recessed propane stove	with flush cover	with flush cover	with flush cover	more counter space when not in use
cabinet doors	solid cherry framed	solid cherry framed	solid cherry framed	stronger, unaffected by moisture
carpet	40 oz.	40 oz.	40 oz.	great durability
Exterior Features	170 // 190 Chevrolet	210 Chevrolet	RS // SS Sprinter	Roadtrek Benefits
lowered floor, low roof	standard	standard	not available	better fuel economy & stability
exterior height w/air cond.	8' 6"	8' 6"	9' 7"	better appearance & clearance
air conditioner, exterior vents, connections	built-in, hidden or camouflaged	built-in, hidden or camouflaged		better appearance, helps avoid RV parking restrictions
overall styling	automotive	automotive	RV	same as above
primary paint colours	sand, silver, white	sand, silver, white	silver, white	more choice, better appearance
spare tire storage - std.	inside	inside	under floor // inside	reduces unit length, easy access to rear
spare tire storage - opt.	Continental kit	Continental kit	n/a // Continental kit	more storage without stress on door

storage compartments - ext.	1 // 2 below floor	3 drawers below floor	not available	room for even more
rear access	2 wide swing doors	2 doors	2 wide swing doors	easy loading and/or egress
aux. propane BBQ connection	standard	standard	standard	no need to carry other tanks, charcoal
sewage disposal system	12V macerator sewage pump	12V macerator sewage pump	12V macerator sewage pump	no handling or storage mess
Automotive Features				
	170 // 190 Chevrolet	210 Chevrolet	RS // SS Sprinter	Roadtrek Benefits
four-wheel-drive (U.S. only)	not avail. // optional	not available	not available	traction, all-weather safety, adventure
quality rating of Chevy Express	#1 by JD Power	#1 by JD Power		why settle for less than #1?
new head impact protection	meets new standard	meets new standard		reduced head injury during crashes
driver & pass. leg room	abundant	abundant	abundant	more riding comfort
seating capacity (front/total)	up to 4/6 people	up to 4/6 people	up to 4/6 // 2/5 people	more versatile as a second car
captain's seat lumbar supports	standard (power)	standard (power)	standard	improved riding comfort
handling	outstanding	outstanding	excellent	ultimate driving pleasure & safety
parking ease	easiest // easier	easy	easy // easiest	fits in a normal sized parking space
power/torque	323 HP/373 ft. lbs.	323 HP/373 ft. lbs.	154 HP/280 ft. lbs.	better passing & towing ability
towing capacity (tow weight)	8100 lbs. max.	7500 lbs. max.	5000 lbs. max.	great for heavy towing
wheelbase	135" // 155"	155"	158" // 140"	better stability & towing
mirror w/compass & temp.	standard	standard	not available	helpful to know
rear window defroster	standard	standard	standard (in Canada)	improved rearward visibility
Other Considerations (for All Models)				
motorhome warranty	4 year/48,000 miles or 80,000 Km			industry leading warranty
durability & safety testing	extensive testing makes for top quality, safe vehicles			long term, trouble free piece of mind
international quality process	registered to ISO 9001: 2000			ensures quality processes throughout company
dealer service network	100+			get service while away from home
factory trained dealer service technicians	ServiceTrek certified			get service done right and fast
owning & operating costs	less than owning both a car/SUV & motorhome			better value for your money
years building class Bs	since 1974			nothing can replace experience
sales ranking (since 1990)	#1 selling North American class B			you've got plenty of company
sales ranking by dollars	among top 15% of North American RV manufacturers			we'll be around for years to come
international owners' club	one of the largest chapters of the FMCA, 4000 members			too many benefits to mention
repeat customers	85% will buy another			unbeatable owner satisfaction
<i>Due to our policy of continuous improvement, specifications are subject to change without notice or obligation.</i>				

MOTORHOME SPECIFICATIONS

	170 models on 2008 Chevrolet Express 2500 Regular Van	190 models on 2008 Chevrolet Express 3500 Extended Van	210 models on 2008 Chevrolet Express 3500 Extended Van	RS models on 2008 Sprinter 2500 "Regular" Van	SS models on 2008 Sprinter 2500 "Short" Van
Air conditioner - 110V	'Dometic' recessed air conditioner & heat pump, 12000 BTU	'Dometic' recessed air conditioner & heat pump, 12000 BTU	'Dometic' recessed air conditioner & heat pump, 12000 BTU	roof mount with electrical heat strip, 11000 BTU	roof mount with electrical heat strip, 11000 BTU
Aisle	760 mm wide/30"	760 mm wide/30"	660 mm wide/26"	710 mm wide/28"	710 mm wide/28"
Awning - box - 'Fiamma'	3000 mm/9' 10"	3500 mm/11' 6"	3500 mm/11' 6"	4000 mm/13' 2"	3000 mm/9' 10"
Bathroom	temporarily enclosed with bifold door (creates private charge area as well)	temporarily enclosed with bifold doors (creates private charge area as well)	permanently enclosed w/vanity sink & sit-down, stand-up shower in aisle	permanently enclosed w/vanity sink & stand-up or sit-down shower	permanently enclosed w/vanity sink & stand-up or sit-down shower
Batteries - auxiliary	one lead acid 12V deep cycle, 95 amp-hrs	two lead acid 12V deep cycle, 190 total amp-hrs.	two lead acid 6V deep cycle, 220 total amp-hrs.	two lead acid 6V deep cycle, 220 total amp-hrs.	two lead acid 6V deep cycle, 220 total amp-hrs.
Battery storage - auxiliary	slide-out tray below floor	slide-out tray below floor	slide-out tray below floor	below floor	below floor
Beds - dual density foam	130 mm/5"	130 mm/5"	130 mm/5"	130 mm/5"	130 mm/5"
Cabinetry	real cherry wood doors and fronts	real cherry wood doors and fronts	real cherry wood doors and fronts	real cherry wood doors and fronts	real cherry wood doors and fronts
Carpet	40 oz. 100% Dupont nylon	40 oz. 100% Dupont nylon	40 oz. 100% Dupont nylon	40 oz. 100% Dupont nylon	40 oz. 100% Dupont nylon
Connection - auxiliary - propane	for BBQ w/quick disconnect	for BBQ w/quick disconnect	for BBQ w/quick disconnect	for BBQ w/quick disconnect	for BBQ w/quick disconnect
Connection - external - 110V	standard	standard	standard w/detachable power cord	standard w/detachable power cord	standard w/detachable power cord
Connection - external - TV cable	standard	standard	standard	standard	standard
Connection - external - water	standard with quick disconnect	standard with quick disconnect	standard with quick disconnect	standard with quick disconnect	standard with quick disconnect
Counter top	solid surface	granite	solid surface	granite	granite
Detectors	smoke, propane & CO	smoke, propane & CO	smoke, propane & CO	smoke, propane & CO	smoke, propane & CO
Faucet - galley	single lever	single lever	single lever	single lever	single lever
Floor - lowered	1620 mm x 880 mm x 50 mm/ 64" x 35" x 2"	1730 mm x 880 mm x 50 mm/ 68" x 35" x 2"	2025 mm x 890 mm x 50 mm/ 80" x 35" x 2"	not applicable	not applicable
Furnace - 'Suburban'	propane automatic, 16000 BTU	propane automatic, 16000 BTU	propane automatic, 16000 BTU	propane automatic, 16000 BTU	propane automatic, 16000 BTU
Generator ready package	for gasoline 'Onan'	for gasoline 'Onan'	for gasoline 'Onan'	for propane 'Onan'	for propane 'Onan'
Home theatre system with 5.1 surround sound & dual centre speakers	not available	w/DVD, CD, AM/FM radio, dual use rear speakers	w/DVD, CD, AM/FM radio, dual use rear speakers	w/DVD, CD, AM/FM radio, dual use rear speakers	w/DVD, CD, AM/FM radio, dual use rear speakers
Microwave oven - 110V	20 L/0.7 cu. ft., 700 W	20 L/0.7 cu. ft., 700 W	convection, 28 L/1.0 cu. ft., 1800 W conv./1000 W micro (210-Popular); 20 L/0.7 cu. ft., 700 W (210-Versatile)	convection, 28L/1.0 cu. ft., 1800 W convection/1000 W microwave	convection, 28L/1.0 cu. ft., 1800 W convection/1000 W microwave
Monitor panel	water & propane levels, battery charge & battery disconnect	water & propane levels, battery charge & battery disconnect	water & propane levels, battery charge & battery disconnect	water & propane levels, battery charge & battery disconnect	water & propane levels, battery charge & battery disconnect
Power inverter with charger - 12/110V	750W, w/3 step 45 amp. charger (w/remote on/off switch)	750W, w/3 step 45 amp. charger (w/remote on/off switch)	750W, w/3 step 45 amp. charger (w/remote on/off switch)	750W, w/3 step 45 amp. charger (w/remote on/off switch)	750W, w/3 step 45 amp. charger (w/remote on/off switch)
Propane tank	38 L/10 US gal./45 lbs.	38 L/10 US gal./45 lbs.	38 L/10 US gal./45 lbs.	45 L/12 US gal./50 lbs.	39 L/10 US gal./45 lbs.
Refrigerator - 'Dometic' - 12V/110V /propane	3.0 cu. ft. w/ auto. source selection	3.0 cu. ft. w/ auto. source selection	4.0/5.0 cu. ft. w/ auto source selection	3.8 cu. ft.	3.8 cu. ft.
Roof vent - 'Fan Tastic' - 12V	low profile power w/thermostat	low profile power w/thermostat	low profile power w/thermostat	low profile power w/thermostat	low profile power w/thermostat
Sewage disposal system - 12V	macerator sewage pump	macerator sewage pump	macerator sewage pump	macerator sewage pump	macerator sewage pump

MOTORHOME SPECIFICATIONS

Shower	stand-up in aisle	stand-up in aisle	sit-down in bathroom or stand-up in aisle	sit-down or stand-up in bathroom	sit-down or stand-up in bathroom
Sink	with flush cover	stainless steel with flush cover	stainless steel with flush cover	stainless steel with flush cover	stainless steel with flush cover
Storage area	across the rear	across the rear	across the rear with trunk	across the rear	across the rear
Storage capacity	49 cu. ft., 62 w/options	62 cu. ft., 80 w/options	74 cu. ft., 81 w/options	55 cu. ft., 81 w/options	47 cu. ft., 50 w/options
Storage compartments - exterior	1 below floor	2 below floor	3 drawers below floor	1 below floor	1 below floor
Stove - two burner - propane	recessed with flush cover	recessed with glass cover	recessed with flush cover	recessed with glass cover	recessed with glass cover
Table - dining	front & rear	front & rear	front & rear	front & rear	rear only
Toilet - 'Thetford'	marine with foot pedal flush	marine with foot pedal flush	marine with foot pedal flush	marine with foot pedal flush	marine with foot pedal flush
TV antenna	'Winegard' crank-up	'Winegard' crank-up	'Winegard' crank-up	'Winegard' crank-up	'Winegard' crank-up
Water fill - fresh - location	front door post to reduce clutter & prevent tampering w/supply	front & rear door posts to reduce clutter & prevent tampering w/supply	front & rear door posts to reduce clutter & prevent tampering w/supply	behind door to reduce clutter & prevent tampering w/supply	behind door to reduce clutter & prevent tampering w/supply
Water heater - 'Suburban'	propane with bypass, 23L/6 US gal., 12000 BTU	propane with bypass, 23L/6 US gal., 12000 BTU	propane with bypass, 23L/6 US gal., 12000 BTU	propane with bypass, 23L/6 US gal., 12000 BTU	propane with bypass, 23L/6 US gal., 12000 BTU
Water system - on demand	12V with 'Shurflo' water pump	12V with 'Shurflo' water pump	12V with 'Shurflo' water pump	12V with 'Shurflo' water pump	12V with 'Shurflo' water pump
Water tank - fresh	55 L/14 US gal.	95 L/25 US gal.	115 L/30 US gal.	115 L/30 US gal.	115 L/30 US gal.
Water tank - grey	85 L/23 US gal.	85 L/23 US gal.	85 L/23 US gal.	90 L/24 US gal.	75 L/20 US gal.
Water tank - black	30 L/ 8 US gal.	40 L/10 US gal.	40 L/10 US gal.	40 L/10 US gal.	40 L/10 US gal.
Windows	frameless awning type	frameless awning type	frameless awning type	frameless awning type	frameless awning type
Windows - roof	3 frameless with curtains	3 frameless with curtains	3 frameless with removable panels	not applicable	not applicable

2009/08 MOTORHOME OPTIONS

	170 models on 2008 Chevrolet Express 2500 Regular Van	190 models on 2008 Chevrolet Express 3500 Extended Van	210 models on 2008 Chevrolet Express 3500 Extended Van	RS models on 2008 Sprinter 2500 "Regular" Van	SS models on 2008 Sprinter 2500 "Short" Van
Armoire - with adjustable shelves & drawers	interchangeable w/ right lounge seat	interchangeable w/ right lounge seat	interchangeable w/ right lounge seat	interchangeable w/ right lounge seat (not avail. with 2nd row captain seats)	not available
Coffee maker	not available	110V (190-Popular only)	110V	110V	110V
Delete box awning	available	available	available	available	available
Delete TV antenna	available	available	available	not available	not available
Delete roof air conditioner	not applicable	not applicable	not applicable	available	available
DVD player	110V with remote	included w/home theatre	included w/home theatre	included w/home theatre	included w/home theatre
Generator - 'Onan MicroLite'	gasoline, remote-start, 2.8 kW	gasoline, remote-start, 2.8 kW	gasoline, remote-start, 2.8 kW	propane, remote-start, 2.5 kW	propane, remote-start, 2.5 kW
Mattresses - folding	for front lounge seat	for front lounge seats	for front lounge seats	for front lounge or captain's seats	not applicable
Pantry - hanging	not applicable	not applicable	beside galley towards rear (210-Popular only)	beside stove towards rear	beside stove towards rear
Screen package	for side van door windows and side & rear door openings	for side van door windows and side & rear door openings	for side van door window and side & rear door openings	for side & rear door openings	for side & rear door openings
TV - flat screen	19" with remote	19" with remote	19" with remote	19" with remote	19" with remote
Wardrobe - removable	not available	interchangeable with left lounge seat	interchangeable with left lounge seat (not avail. with 2nd row captain seats)	interchangeable with left lounge seat	not available

2008 STANDARD AUTOMOTIVE FEATURES

	170 models on 2008 Chevrolet Express 2500 Regular Van	190 models on 2008 Chevrolet Express 3500 Extended Van	210 models on 2008 Chevrolet Express 3500 Extended Van	RS models on 2008 Sprinter 2500 "Regular" Van	SS models on 2008 Sprinter 2500 "Short" Van
Air bag - driver & passenger	with passenger on/off switch	with passenger on/off switch	with passenger on/off switch	standard	standard
Alternator	145 amp.	145 amp.	145 amp.	150 amp.	150 amp.
Axle - rear	3.73 ratio	4.10 ratio	4.10 ratio	4.10 ratio	4.10 ratio
Battery	600 amp.	600 amp.	600 amp.	760 amp.	760 amp.
Brakes - anti lock (ABS)	four wheel disc	four wheel disc	four wheel disc	four wheel disc	four wheel disc
Climate control	standard	standard	standard	electronic with glove box cooler	electronic with glove box cooler
Compass & exterior temperature display	in instrument panel	in instrument panel	in instrument panel	not available	not available
Cooling - transmission oil	internal	internal	internal	external	external
Cruise control	standard	standard	standard	standard	standard
Defroster - rear window	standard	standard	standard	standard (Canada only)	standard (Canada only)
Door locks - with remote	power - all doors, single key	power - all doors, single key	power - all doors, single key	power - all doors, single key	power - all doors, single key
Doors & exits	double 40/60 side & 50/50 rear	double 40/60 side & 50/50 rear	wide side & 50/50 rear	tall sliding side & 50/50 rear	tall sliding side & 50/50 rear
Engine	6.0 L SFI gas V8	6.0 L SFI gas V8	6.0 L SFI gas V8	Mercedes 3.0 L CRD V6 turbo diesel	Mercedes 3.0 L CRD V6 turbo diesel
Fuel capacity	117 L/31 US gal.	117 L/31 US gal.	117 L/31 US gal.	100 L/26 US gal.	100 L/26 US gal.
Headlights	automatic on/off	automatic on/off	automatic on/off	automatic on/off	automatic on/off
Mirrors - exterior	power, heated w/convex	power, heated w/convex	power, heated w/convex	power, heated w/aux. parabolic	power, heated w/aux. parabolic
Power	224 kW/323 HP	224 kW/323 HP	224 kW/323 HP	115 kW/154 HP	115 kW/154 HP
Receiver	class IV	class IV	class IV	class III	class III
Seat belts in rear	two	two w/twin beds (190-Popular), three with rear sofa (opt. on 190-Popular)	two (zero in Canada)	two (zero in Canada) with optional rear sofa	three
Seats - cab - Captain's	swiveling, power lumbar support & dual armrests	swiveling, power lumbar support & dual armrests	swiveling, power lumbar support & dual armrests	swiveling, height adjustable, manual lumbar support & dual armrests	swiveling, height adjustable, manual lumbar support & dual armrests
Sound system	AM/FM/satellite ready, CD & iPod ready	AM/FM/satellite ready, CD & iPod ready	AM/FM/satellite ready, CD & iPod ready	AM/FM & CD	AM/FM & CD
Stability program - electronic (ESP)	not available	not available	not available	adaptive (accounts for load)	adaptive (accounts for load)
Theft deterrent system	standard	standard	standard	standard	standard
Tilt steering	standard	standard	standard	standard	standard
Tire pressure monitoring system	standard	standard	standard	standard	standard
Tire storage - spare	rear storage area	rear storage area	rear storage area	vehicle underside between axles	rear storage area
Tires	LT245/75R16E black wall	LT245/75R16E black wall	LT245/75R16E black wall	LT245/75R16E black wall	LT245/75R16E black wall
Torque	504 N-m/373 lb-ft	504 N-m/373 lb-ft	504 N-m/373 lb-ft	380 N-m/280 lb-ft	380 N-m/280 lb-ft
Traction control	not available	not available	not available	standard	standard
Trim - real cherry wood	dash & front door panels	dash & front door panels	dash & front door panels	dash & front door panels	dash & front door panels
Wheels	16" steel with chrome look covers	16" steel with chrome look covers	16" steel with chrome look covers	16" steel with trim	16" steel with trim
Window operation	power - front doors only	power - front doors only	power - front doors only	power - front doors only	power - front doors only
Window tint	deep tinted - all	deep tinted - all	deep tinted - all	deep tinted	deep tinted
Wiring harness for towing	4 and 7 way (brake controller not included)	4 and 7 way (brake controller not included)	4 and 7 way (brake controller not included)	4 and 7 way (brake controller not included)	4 and 7 way (brake controller not included)

2008 AUTOMOTIVE OPTIONS

Axle - rear	not available	locking differential, external transmission cooler	locking differential, external transmission cooler	not available	not available
Blackout paint treatment	between windows	between windows	not available	not applicable	not applicable
Bumper covers	front & rear	front & rear	front & rear	standard, front only	standard, front only
Continental spare tire kit	available	available	available	not applicable	available
Four-wheel-drive with IFS	not available	available (U.S. only)	not available	not available	not available
LE package	not available	black paint w/taupe lower body, front billet grill, chrome port holes, black carbon fibre dash trim	not available	not available	not available
LX package	sand paint w/charcoal lower body	sand paint w/charcoal lower body	sand paint w/charcoal lower body	sand paint w/charcoal lower body	sand paint w/charcoal lower body
SE package	silver paint w/grey lower body	silver paint w/grey lower body	silver paint w/grey lower body	silver paint w/grey lower body	silver paint w/grey lower body
Seats - 2nd row - Captain's	not available	not available	not available	swiveling, dual armrests	not applicable
Seats - leather - faux	captain's & lounge seats	captain's & lounge seats	captain's & lounge seats	captain's &/or lounge seats	captain's seats
Sofa - rear - electric power	not available	w/3 seat belts, std. on 190-Versatile, (converts to bed(s))	w/2 seat belts (0 in Canada), std. on 210-Versatile (converts to bed(s))	w/2 seat belts (0 in Canada), converts to twins/king bed	standard w/3 seat belts (converts to twins/king bed)
Striping - minimalist	available (replaces std. graphics)	available (replaces std. graphics)	available (replaces std. graphics)	available (replaces std. graphics)	available (replaces std. graphics)
Wheels - aluminum	16" - with steel spare	16" - with steel spare	16" - with steel spare	16" - with steel spare (must order)	16" - with steel (must order)

2008 EXTERIOR DIMENSIONS & WEIGHTS

Length	5720 mm/18' 9" (1)	6220 mm/20' 5" (1)	6680 mm/21' 11" (1)	6945 mm/22' 9"	5910 mm/19' 5" (1)
Height - overall	2660 mm/8' 9"	2660 mm/8' 9"	2660 mm/8' 9"	2920 mm/9' 7" (with roof A/C)	2920 mm/9' 7" (with roof A/C)
Width - overall (w/o mirrors)	2010 mm/6' 7"	2010 mm/6' 7"	2240 mm/7' 4"	2025 mm/6' 8"	2025 mm/6' 8"
Wheel base	3430 mm/135"	3940 mm/155"	3940 mm/155"	4325 mm/170"	3665 mm/144"
Unloaded vehicle weight (2)	3300 Kg/7200 lbs.	3500 Kg/7700 lbs.	3750 Kg/8300 lbs.	3450 Kg/7550 lbs.	3200 Kg/7100 lbs.
Gross vehicle weight rating	3900 Kg/8600 lbs.	4355 Kg/9600 lbs.	4355 Kg/9600 lbs.	3878 Kg/8550 lbs. (6)	3878 Kg/8550 lbs.
Gross combined weight rating (3)	6350 Kg/14000 lbs.	7258 Kg/16000 lbs.	7258 Kg/16000 lbs.	6146 Kg/13550 lbs.	6146 Kg/13550 lbs.
Towing - tow weight (4)	3000 Kg/6600 lbs.	3700 Kg/8100 lbs.	3400 Kg/7500 lbs.	2268 Kg/5000 lbs.	2268 Kg/5000 lbs.
Towing - tongue weight (5)	340 Kg/750 lbs.	450 Kg/1000 lbs.	450 Kg/1000 lbs.	227 Kg/500 lbs.	227 Kg/500 lbs.

(1) Add 250 mm/10" if equipped with optional Continental spare tire kit.

(2) Includes weight of base vehicle, fuel and propane only. Does not include weight of optional equipment, water, cargo and/or passengers.

(3) GCWR includes total weight of vehicle, trailer, equipment, fuel, water, propane, cargo, driver and passengers.

(4) Maximum towable weight with driver only. This weight reduced by weight of optional equipment, fuel, water, propane, cargo and/or passengers.

(5) A weight distributing hitch is required for tongue weights over 200 Kg/400 lbs.

(6) This vehicle has been successfully tested to be safely loaded to 4175 Kg/9200 lbs. See Safety section for details.

2008 INTERIOR DIMENSIONS

Standing height	1830 mm/72"	1855 mm/73"	1880 mm/74"	1910 mm/75"	1910 mm/75"
Rear king bed length	not applicable	1930 mm/76" (maximum)	1930 mm/76" (maximum)	1980 mm/78"	1930 mm/76" (maximum)
Rear king bed width	not applicable	1855 mm/73"	2030 mm/80" (maximum)	1750 mm/69"	1750 mm/69"
Rear double or queen bed length	1855 mm/73"	1855 mm/73"	2030 mm/80"	not applicable	not applicable
Rear double or queen bed width	1260 mm/50"	1320 mm/52"	1520 mm/60"	not applicable	not applicable
Rear twin bed length - left, right	not applicable	1930 mm/76", 1830 mm/72"	1930 mm/76", 1830 mm/72"	1980 mm/78"	1930 mm/76", 1830 mm/72"
Rear twin bed width	not applicable	690 mm/27"	760 mm/30"	710 mm/28"	710 mm/28"
Front single bed length - left, right	1660 mm/65"	1540 mm/61", 1660 mm/65"	1575 mm/62", 1660 mm/65"	1930 mm/76" (opt.)	not applicable
Front single bed width	560 mm/22" (maximum)	560 mm/22" (maximum)	560 mm/22" (maximum)	560 mm/22" (opt.)	not applicable

In case you were wondering before you go wandering...

We thought it might be helpful to summarize the top questions we have received over the years and give you the answers here:

Can I buy directly from the factory?

No. We sell through a dealer network to ensure excellent sales and service of our product. Arrangements can be made through your local dealer, however, to take delivery at our local Kitchener dealer (Canadian residents only), or one in New York state or Michigan (U.S. residents only).

Can a U.S. resident buy in Canada or a Canadian resident buy in the U.S.?

A U.S. resident needs a Roadtrek built to U.S. specifications. A Canadian resident needs a Roadtrek built to Canadian specifications. Units are built to unique specifications for each country.

Why do Roadtreks cost more than some B+ and class C motorhomes and low end class A's? Why don't they cost less, considering their smaller size?

Roadtreks are more expensive to build due to the higher costs of manufacturing the "exterior shell"; adapting to unusual shapes; and working with limited space.

Why is it more expensive to manufacture the 'exterior shell' of a Roadtrek?

Many B+ and class C motorhomes consist of a van cab and chassis to which a flat floor, straight fiberglass walls and flat roof are added. All Roadtrek models start with a more expensive complete van body. The Roadtrek 210 has an aerodynamic molded fiberglass body added with the original side and rear cargo doors retained. Roadtrek

170 or 190 have the roof removed and replaced with a higher molded fiberglass roof. Also a section of the floor is removed and replaced with a custom lowered floor. Other additional modifications are also required, but these are the most time consuming.

How do 'unusual shapes' and working within limited space increase the cost of a Roadtrek?

It is much easier to adapt interior cabinets and components to the square fiberglass "box" of a class A, C or B+ than to the unusual curved shape of the Roadtrek's interior. In addition, it is more difficult to get all the equipment to fit comfortably within the limited space of a Roadtrek - and, when off-the-shelf items are not suitable, it's often more expensive to get custom made or modified components such as water tanks and propane tanks.

Is a higher roof class B less expensive to build than a low profile Roadtrek with a lowered floor?

Yes, a higher roof class B is less expensive to build because no modifications are required to modify the fuel system to lower the floor, and there is more space available to install the desired equipment and components.

There's only the two of us. Why would we want 3 or 4 seats at the front?

Four seats provide a roomy area to eat, entertain or relax with another couple. More importantly, a 3rd seat and one of the captain's seats provide an eating area at the front for the two of you that's much easier to use than the two front captain's seats. Having separate eating and sleeping sections is a convenience normally found only in larger motorhomes. Not only can the two of you get up and retire at different times, but you need not convert the bed at the rear into a sofa or dinette to eat. Extra seating also increases openness at the front.



The truth of our slogan "Fuel Efficient Motorhomes You'll Love to Drive" has rarely been tested as much as a trip down the world's windiest street, Lombard Street in San Francisco, California. Larger RVs would not even attempt what a Roadtrek can do with ease.



Roadtrek partnered with the NFL's San Francisco 49ers to support a Community Cruiser that became a common sight around town at team events and charity functions. You just never know where you will find a Roadtrek.

What can I do if I still don't want the seat(s) behind the captain's seats?

The passenger side lounge seat in all models can be temporarily replaced with our full-height armoire option. For models with 4 seats, our removable wardrobe is interchangeable with the driver side lounge seat. It provides more hanging space when needed while allowing extra seating when needed. For models with 4 seats, you can order both the wardrobe and armoire options.

Why don't you build your lounge seats on steel frames instead of wooden boxes?

Steel framed seats that convert to beds have limited space for storage and equipment. The seat belts of our lounge seats are mounted on the chassis. The wooden seat bases have been tested and pass all mandatory safety tests (consider how many people have survived collapsed buildings by hiding under a wooden desk - don't underestimate the strength of a wooden "box").

What is a heat pump?

In addition to being a 12,000 BTU air conditioner, it is a heating system that provides adequate heat at temperatures above 40 degrees F (5 degrees C) through a reverse internal cycle.

Why don't you build on Ford chassis?

The Chevrolet Express van's design is better suited to our product than the Ford Econoline. Also, GM's full-size vans have received the highest ratings for quality and customer satisfaction of any of the domestic manufacturers.

Is the water system designed for winter use?

In 190 and 210 models, we've added a second fresh water tank inside. By using RV anti-freeze in the black and grey water tanks, the water system can be used in below freezing conditions to 10 degrees F (-10 degrees C). In 170, RS and SS models, the fresh water tank and lines and water heater should not be used in below freezing temperatures. However, you can still use the sink and toilet by carrying a fresh water supply inside the vehicle and using RV anti-freeze in the black and grey wastewater tanks.

LOCATION

How to find us

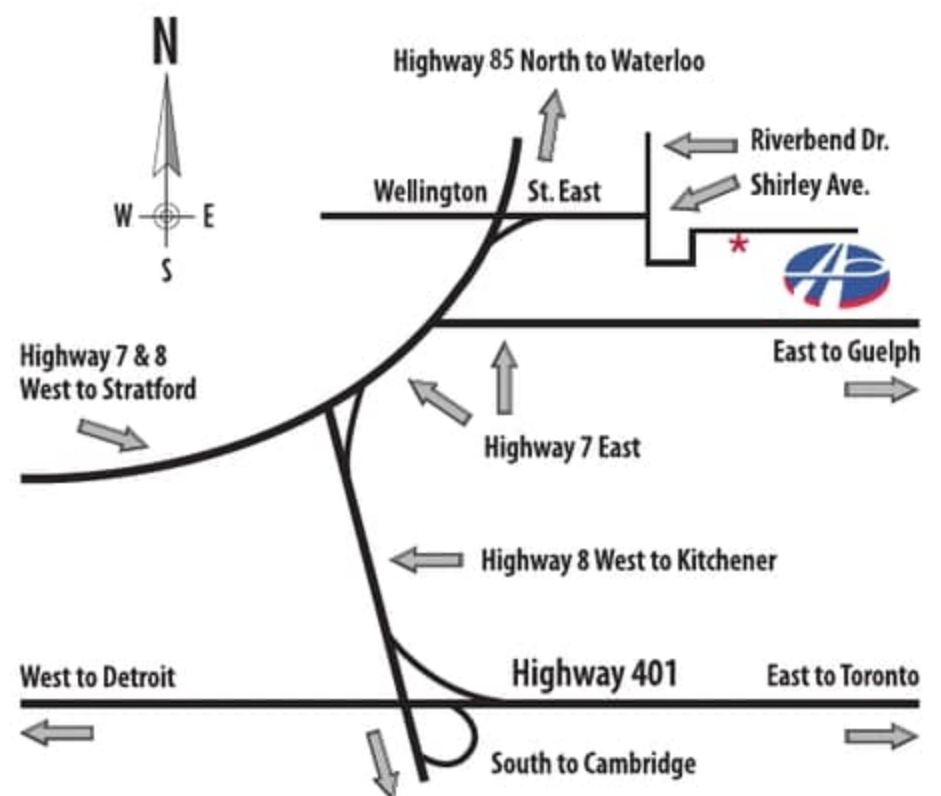
Everyone should go and visit the Roadtrek factory in Kitchener, Ontario. What a place. You can see why the Roadtrek is so well put together. The place is spotless and well organized. The people were very friendly and seemed very motivated and happy in their work. They spoke proudly of the jobs that they were doing. We went there on a whim but it turned out to be a great experience that we recommend to all.

Bob Bussolari, Suffield, Connecticut



Come visit our modern 120,000 sq. ft. plant. Tours are available Monday through Friday at 10:00 am or 2:00 p.m. Closed weekends, between Christmas and New Year, all Canadian holidays and for a two week summer shutdown. Space is limited, so please call ahead. Contact us at sales@roadtrek.com or 1-888-ROADTREK to make a reservation.

From Highway 401, take the Highway 8 West exit (to Kitchener) to Highway 7 East/85 North. Proceed on to Wellington Street East and then to Shirley Avenue. Turn right (south) and follow Shirley to our plant at 100 Shirley Avenue on your right.



MORE QUOTES FROM ROADTREK OWNERS

[Response to RV View magazine interview question: You have the option to travel the world using any mode of transportation out there; why an RV? (Parton and her husband take a vacation each year in their Roadtrek RV.)] I've practically spent my entire life on a bus or an RV. It's private, fun and besides, I haul around a bunch of stuff! If I had to carry all of this junk to a hotel room, it would be time to check out before I even checked in!

*Dolly Parton,
Pigeon Forge, Tennessee*

Being a Rock 'n Roll musician, Roadtrek has been my very best friend. It has all the conveniences of a luxury motorhome, except anyone who has a driver's license can drive it, park it and get it serviced just like an ordinary van. Roadtrek is the only answer I have found and, over the years, I've tried just about all of them!

*Ronnie Hawkins,
Rock n' Roll Legend*

Just like you folks to know the gas mileage we got after our trip to... We drove just 464 miles over two mountain passes... with a calculated average of 16.2 MPG [in our Roadtrek 190].

*Frans Eykel,
Cathlamet, Washington*

Owning a Roadtrek is a lifestyle. It is the freedom to "ride away" to a Rally or into the Canadian or American wilderness. It's about people and making friends. It's about nature, our cities and our beautiful landscapes. It's about the sculptured desert of Arizona, the fishing villages of Maine and Prince Edward Island, the rolling hills of Kentucky, the vast Canadian prairies, the Cape Breton highlands of Nova Scotia and the majestic Canadian Rockies. That's what our Roadtrek means to us.

*Paul & Huguette Blissett,
Orleans, Ontario*



The most rewarding purchase I ever made is my Roadtrek... I now have 68,000 Km trouble free driving.

*Betty Lundrigan,
Witless Bay, Newfoundland*

We have owned 11 Coaches in the past 35 years and rate, our Roadtrek the best in quality of construction. The Roadtrek has been problem free in all areas during the past 2100 miles.

*Kenneth Hoot,
Loveland, Colorado*

I've owned several types of RVs over forty years including Fleetwood's top of the line turbo-diesel American Eagle. But none can compare with the quality, ease of travel, and dealer support of Roadtrek. I have owned two new Roadtreks, and there probably will be future vehicles.

*General John Wickham, US Army
(Retired), Tuscon, Arizona*

I would like to let everyone know that my 190-Popular is the finest equipment that I have ever owned. Thanks again.

Jerry Archer

Puchasing the Roadtrek and using it has been "a dream come true"! This summer we have camped with all of our children and grand-children and we have had adventures that we had only dreamed of. We Love being "Trekkers"!

*Michael & Judy Gillen,
Grand Rapids, Michigan*

After having five big motorhomes in 22 years and 300,000 miles, this was a drastic change and we wondered. After 18 months and 23,000 miles we love it...

*Ronald & Donna Merrill,
Lakeland, Florida*



Roadtreks in motion...

To learn even more about the exciting prospect of owning a Roadtrek, please watch this free Lifestyle, Product Demonstration and Corporate DVD. Its three sections are only an hour long.

The "Lifestyle" portion depicts how and why owning a Roadtrek can enhance your lifestyle. The "Product Demonstration" portion demonstrates the best product features and benefits of the different Roadtrek models to help you decide which one best suits you. The "Corporate" portion covers the most positive attributes of Roadtrek Motorhomes, the company that designs, builds and stands behind every Roadtrek. Who manufactures a product is often just as important as what you're buying.



Yosemite National Park, California

MORE QUOTES FROM ROADTREK OWNERS



People are usually amazed at the amount of storage we have, and that our marriage has not dissolved even though we live in our Roadtrek at least 4 to 5 months of each year. One of the reasons our marriage of more than 47 years has lasted this long is because our RV has given us the opportunity to travel and enjoy many thousands of miles together.

*Ed & Mary Michalski,
Plymouth, Wisconsin*

We love this RV! We went from a 36 foot to this size because we can go any where. We use it for day trips with friends, have used it as a "guest room" when we visit friends who live nearby, and love the compact convenience. This is our out and about RV, not our park it and sit RV. Thanks,

*Martin Hadfield,
Auburn, Washington*

Styling... looks much better than competition. Storage... takes everything we had in 28' trailer. Reputation... friends have one. Our first trip... no packing! – everything there... just drive. Took last space in camp – we fit!... others turned away. Constantly get stopped by strangers asking to look inside my Roadtrek – happily comply.

*A Scott,
Scotts Valley, Arizona*



Warranties & Other Important Information

CHASSIS

3 year/36,000 mile or 60,000 km limited "bumper to bumper" warranty and 5 year/100,000 mile or 160,000 km limited powertrain warranty as offered by General Motors. Or 3 year/36,000 mile or 60,000 km base limited warranty and 5 year/100,000 mile or 160,000 km limited diesel engine warranty as offered by Chrysler and Freightliner.

MOTORHOME

4 year/48,000 miles or 80,000 km limited warranty is offered by Roadtrek covering the manufacture of the motorhome only (does not include the chassis).

APPLIANCES

Those offered on the individual appliances by their respective manufacturers.

From its clever, compact and quality use of every inch of space to its sleek look, from the back roads of the Northwest to the busy streets of DC and the narrow lanes of New England, the Roadtrek accommodated our needs for comfort, charm, performance and economy. We love it!... RV shows led me to believe I needed more than 19 or 21 feet for fulltiming. We ended up with a larger motorhome for awhile... Then... we down sized to the 19 foot Roadtrek. It has served us well for over a year now. We are able to travel easily with no tow vehicle. Our mileage is better, our insurance lower, and best of all, I can and do drive it. It takes us to beautiful places, to visit lots of wonderful family, and to the local supermarket...

*Gael P. Mustapha,
Green Valley, Arizona*

IMPORTANT INFORMATION YOU SHOULD KNOW... PLEASE READ

Some units pictured with optional equipment. Certain options may require deletions of standard items or additions of other optional items in order to function properly. Restrictions or limitations may apply to certain options and/or chassis combinations. See your dealer for details.

As we are always working to improve our product, specifications and design are subject to change without notice or obligation whatsoever. Roadtrek shall not be held responsible for errors or omissions contained herein or the delivery or non-delivery of any item herein.

Original and exclusive exterior and interior design and contents may not be duplicated. Same protected by U.S. Patent numbers 4550946, 4685719, 5458353, 5639141, 5653262, 5662373, 5697666, 5788320; and Canadian Patent numbers 1200262, 1205103, 1212398, 1260988, 1269802, 2084020, 2096602.

The drawings, photographs, literature and technical information contained herein are the exclusive property of Roadtrek Motorhomes Inc. The above may not be duplicated, reproduced, used nor conveyed to others without our express written consent.

™ ® "Roadtrek", "Fuel Efficient Motorhomes You'll Love to Drive", "The Motorhome that Drives like an SUV" and "The Motorhome that Drives like a Van" are registered trademarks of J.J. Hanemaayer and of which Roadtrek Motorhomes Inc. is a licensee and/or registered user.

While information is the cornerstone of our ability to provide superior service, our most trusted asset is our user's trust. Your privacy is a top priority for all of us at Roadtrek Motorhomes. To view our Privacy Policy visit www.roadtrek.com/privacy or phone to receive a copy.

*On the road
since 1974!*



Roadtrek™
MOTORHOMES INC.

(formerly Home & Park Motorhomes, Div. of Hanmar Motor Corporation)

100 Shirley Avenue Kitchener, Ontario, N2B 2E1

888-ROADTREK (762-3873) or 519-745-1169

Fax: 519-745-1160

sales@roadtrek.com

www.roadtrek.com/LIT