

*Remember your first love?*



*American Coach*

2009 AMERICAN EAGLE

*Remember your first love?*



*American Coach*

2009 AMERICAN EAGLE



2009  
AMERICAN EAGLE



American Eagle 42P shown in Cabernet Gold with Crusader Graphics.  
(Also available in Freedom graphics.)



2009  
AMERICAN EAGLE



American Eagle 42P shown in Cabernet Gold with Crusader Graphics.  
(Also available in Freedom graphics.)



*The important moments  
stay with you always.*



## INTRODUCING THE 2009 AMERICAN EAGLE

One glance and it all comes rushing back... the look you can't take your eyes off of... the touch that's exciting and yet perfectly comfortable... suddenly your heart is soaring. American Eagle's irresistible style, performance and luxury make it easy to fall in love again, for the very first time.



**YOUR FIRST  
BUTTERFLIES:**  
*It's that glorious feeling -  
words just can't describe it.*





*The important moments  
stay with you always.*

INTRODUCING THE 2009 AMERICAN EAGLE

One glance and it all comes rushing back... the look you can't take your eyes off of... the touch that's exciting and yet perfectly comfortable... suddenly your heart is soaring. American Eagle's irresistible style, performance and luxury make it easy to fall in love again, for the very first time.

**YOUR FIRST  
BUTTERFLIES:**  
*It's that glorious feeling -  
words just can't describe it.*











American Eagle 42P shown in Vintage Vanilla with Regency Cherry wood cabinetry.



American Eagle 42P shown in Vintage Vanilla with Regency Cherry wood cabinetry.



2009  
AMERICAN EAGLE



*Accelerated heart rate, excited breathing.  
The magic moment.*



Step inside and embrace the loving details... exquisite woodwork, romantic ceiling lighting (with dimmers, of course), the rich leather sofa, and tastefully designed furnishings. That wonderful sound you're hearing isn't your heart beating; it's the advanced Bose® entertainment system.



**THE FIRST BOND:**

*That first time you experience  
a real connection – what  
a rush. The one that truly  
touches your heart is found.*





2009  
AMERICAN EAGLE



*Accelerated heart rate, excited breathing.  
The magic moment.*



Step inside and embrace the loving details... exquisite woodwork, romantic ceiling lighting (with dimmers, of course), the rich leather sofa, and tastefully designed furnishings. That wonderful sound you're hearing isn't your heart beating; it's the advanced Bose® entertainment system.



**THE FIRST BOND:**

*That first time you experience  
a real connection – what  
a rush. The one that truly  
touches your heart is found.*















*If you don't take the plunge,  
you'll never know the rush.*



True love gives you space. With its roomy work surfaces and optional, full-sized refrigerator, the gourmet kitchen holds all the ingredients for your culinary fantasies. After dinner at the romantic dinette, slip the dishes in the dishwasher (optional) and relax.

Love was meant for this.



**THE FIRST  
NEW BEGINNING:**

*Down the isle, a ring, a kiss, a promise  
and a very special person to  
share your life with.*



2009  
AMERICAN EAGLE





*If you don't take the plunge,  
you'll never know the rush.*



True love gives you space. With its roomy work surfaces and optional, full-sized refrigerator, the gourmet kitchen holds all the ingredients for your culinary fantasies. After dinner at the romantic dinette, slip the dishes in the dishwasher (optional) and relax.

Love was meant for this.



**THE FIRST  
NEW BEGINNING**

*Down the aisle, a ring, a kiss a promise  
and a very special person to  
share your life with.*



2009  
AMERICAN EAGLE





2009  
AMERICAN EAGLE





2009  
AMERICAN EAGLE







*HOME*  
is where your  
story begins.



*There's no place like home,  
especially when it's your first.*



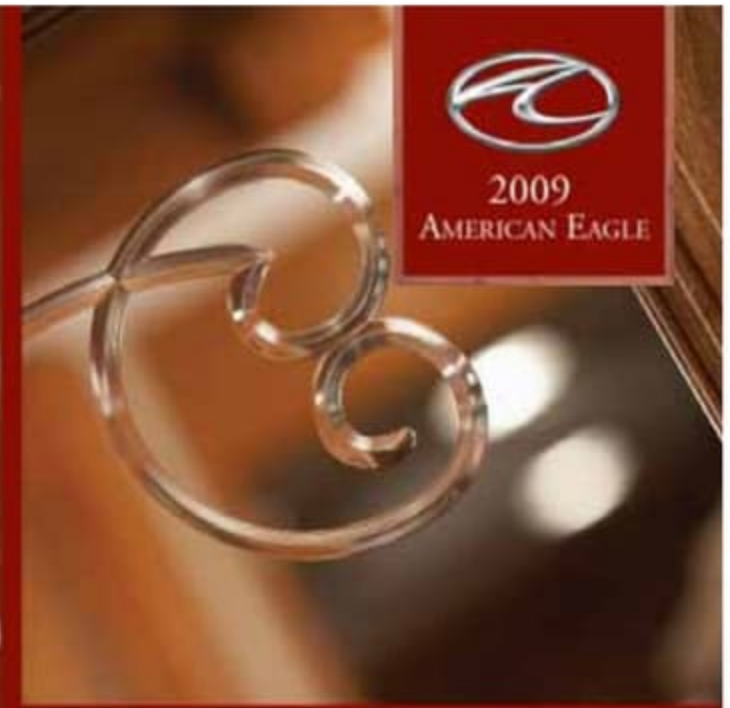
*HOME*  
is where your  
story begins.



*There's no place like home,  
especially when it's your first.*



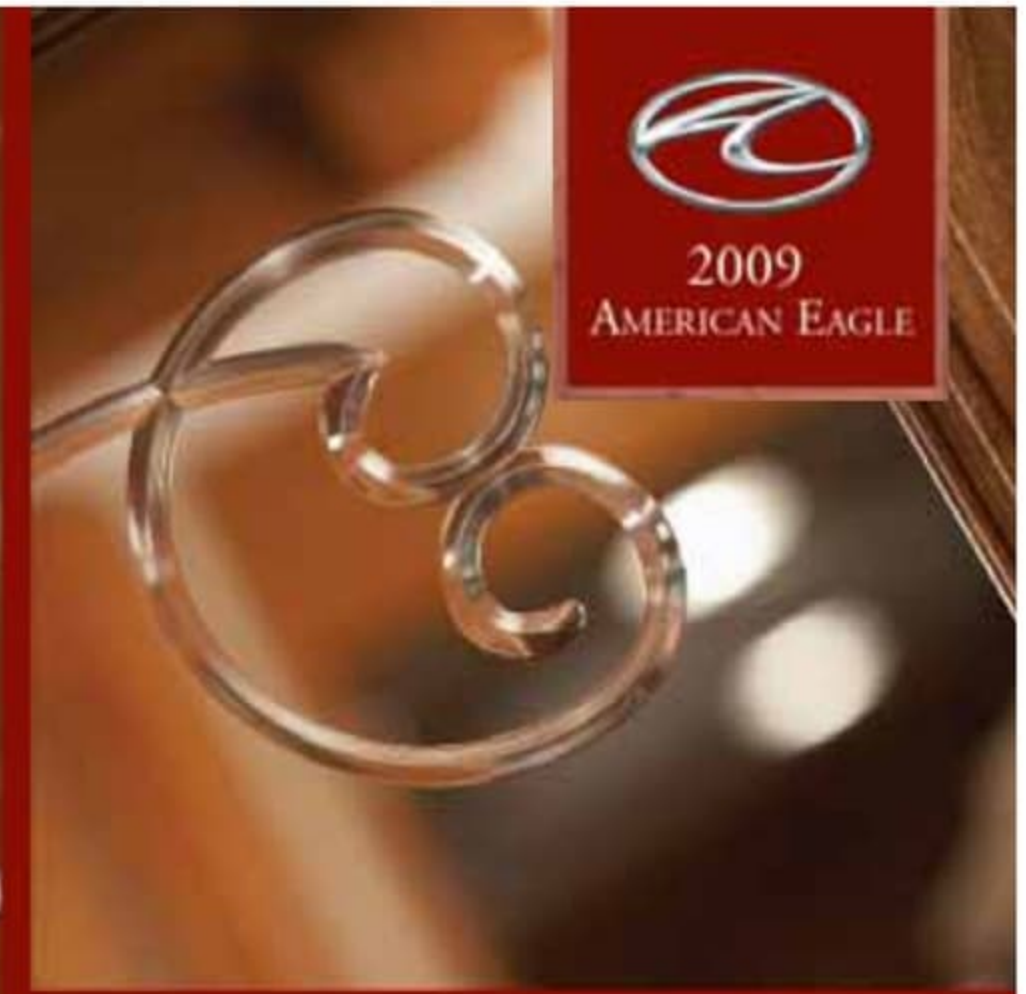




  
2009  
AMERICAN EAGLE



Bask in the glow of the beautifully appointed vanity and rejuvenate in the spa-inspired shower. With Kohler faucets throughout, you'll be forever enchanted. And at the end of the day, your Sony® wide screen TV will win your heart as you relax in the opulent comfort of your private master retreat.



  
2009  
AMERICAN EAGLE



Bask in the glow of the beautifully appointed vanity and rejuvenate in the spa-inspired shower. With Kohler faucets throughout, you'll be forever enchanted. And at the end of the day, your Sony® wide screen TV will win your heart as you relax in the opulent comfort of your private master retreat.



2009  
AMERICAN EAGLE





2009  
AMERICAN EAGLE



# Let the adventure begin.



Once in a lifetime you find it. The perfect combination of an adventurous spirit and a taste for luxury. American Eagle has it all.

Slip into your luxurious captain's chair and gaze across the low profile, ergonomically designed dash. Then look out the window at the road ahead, and you'll see it all clearly. This is where your heart is. American Eagle can take you there.



## **TWO BECOME ONE**

*and the promise of a  
new beginning, a new  
adventure commences.*



Sleek yet functional. Solid wood drawers provide ample room for all your driving necessities and a curved integrated design that hides them away when not in use.



A classic aeronautical appearance reveals an ergonomically designed dash instrumentation panel. All gauges are back lit and highly visible through a leather and burl wood trimmed smart wheel.



Designed to easily guide you to your destination with ease and comfort is the Navion®R5000 infotainment center. This multifunctional, state-of-the-art system comes with AM/FM/CD player, MP3 port, engine monitoring and rear vision camera all in one.

# Let the adventure begin.



Once in a lifetime you find it. The perfect combination of an adventurous spirit and a taste for luxury. American Eagle has it all.

Slip into your luxurious captain's chair and gaze across the low profile, ergonomically designed dash. Then look out the window at the road ahead, and you'll see it all clearly. This is where your heart is. American Eagle can take you there.



**TWO BECOME ONE**  
*and the promise of a  
new beginning, a new  
adventure commences.*



Sleek yet functional. Solid wood drawers provide ample room for all your driving necessities and a curved integrated design that hides them away when not in use.



A classic aeronautical appearance reveals an ergonomically designed dash instrumentation panel. All gauges are back lit and highly visible through a leather and burl wood trimmed smart wheel.



Designed to easily guide you to your destination with ease and comfort is the Navion®R5000 infotainment center. This multifunctional, state-of-the-art system comes with AM/FM/CD player, MP3 port, engine monitoring and rear vision camera all in one.



2009  
AMERICAN EAGLE

## EXTERIOR GRAPHICS\*



*Café Blanc (Shown in Crusader Graphics)*



*Sandrift (Shown in Crusader Graphics)*



*Raspberry Cream (Shown in Crusader Graphics)*

\*Not all exterior colors or graphics are shown. All colors are available in both "Freedom" and "Crusader" graphic schemes. See your local American Coach dealer or visit our website at [www.AmericanCoach.com](http://www.AmericanCoach.com) to view all graphic and color choices.



2009  
AMERICAN EAGLE

## EXTERIOR GRAPHICS\*



*Café Blanc (Shown in Crusader Graphics)*



*Sandrift (Shown in Crusader Graphics)*



*Raspberry Cream (Shown in Crusader Graphics)*

\*Not all exterior colors or graphics are shown. All colors are available in both "Freedom" and "Crusader" graphic schemes. See your local American Coach dealer or visit our website at [www.AmericanCoach.com](http://www.AmericanCoach.com) to view all graphic and color choices.



# INTERIOR DECORS<sup>†</sup>

## HARDWARE



## CABINETRY CHOICES<sup>†</sup>



Creme Brulee



Regency Cherry



Natural Cherry



Spicy Maple



Silver Backed Taupe  
Glazed Maple



Satin Cabernet



Amaretto Stone



Vintage Vanilla



Brown Sugar Truffles



Ebony Pearl Claret

<sup>†</sup> Interior décors and/or woods may be subject to change. Printed fabric samples above are close representations of actual fabrics and may be limited due to standard printing technology.

# INTERIOR DECORS<sup>†</sup>

## HARDWARE



## CABINETRY CHOICES<sup>†</sup>



Creme Brulee



Regency Cherry



Natural Cherry



Spicy Maple



Silver Backed Taupe  
Glazed Maple



Satin Cabernet



Amaretto Stone



Vintage Vanilla



Brown Sugar Truffles



Ebony Pearl Claret

<sup>†</sup> Interior décors and/or woods may be subject to change. Printed fabric samples above are close representations of actual fabrics and may be limited due to standard printing technology.

**YOUR FIRST  
LITTLE ONE**  
*A new life,  
a new passion.*



## *Great expectations – delivered.*



For years, American Coach has held the same core philosophy. We don't just simply build to industry standards alone, we also build to our customers' standards. Our team refuses to settle for sub-standard parts or low-quality construction. No short cuts. No cheap materials. No substitutions. Just painstaking attention to detail by the best and most dedicated craftsmen in RV manufacturing. The end result of our efforts is a coach of strength, integrity and overwhelming beauty. One that we're just as proud to stand behind as you will be to own.



**YOUR FIRST  
LITTLE ONE**  
*A new life,  
a new passion.*



## *Great expectations – delivered.*



For years, American Coach has held the same core philosophy. We don't just simply build to industry standards alone, we also build to our customers' standards. Our team refuses to settle for sub-standard parts or low-quality construction. No short cuts. No cheap materials. No substitutions. Just painstaking attention to detail by the best and most dedicated craftsmen in RV manufacturing. The end result of our efforts is a coach of strength, integrity and overwhelming beauty. One that we're just as proud to stand behind as you will be to own.





2009  
AMERICAN EAGLE

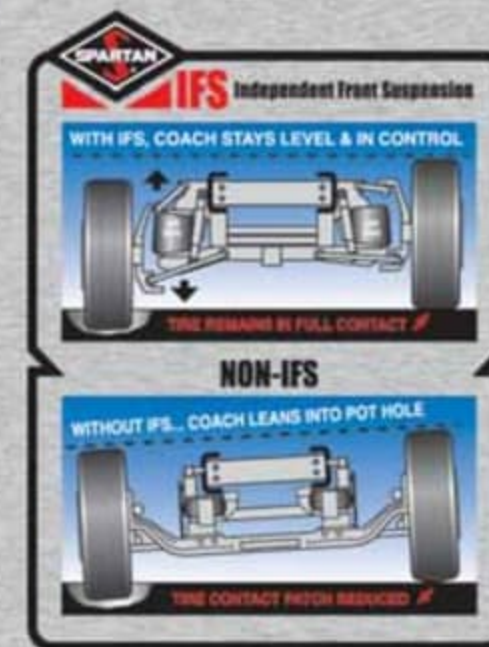
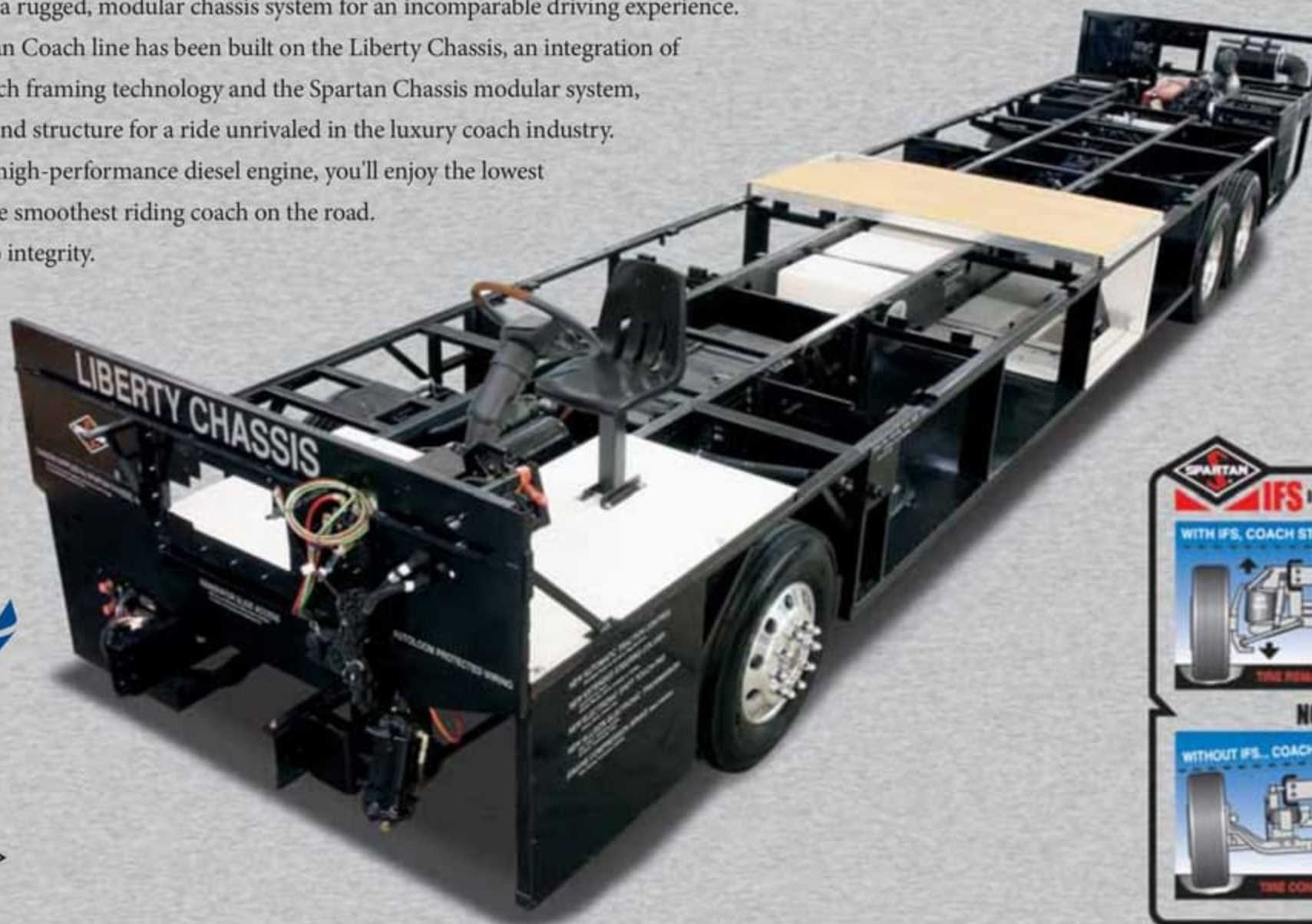
## THE LIBERTY CHASSIS

Technology this groundbreaking requires an expert team. That's why American Coach and Spartan decided to join forces - to create a rugged, modular chassis system for an incomparable driving experience.

Since 2004, the American Coach line has been built on the Liberty Chassis, an integration of superior American Coach framing technology and the Spartan Chassis modular system, providing the strength and structure for a ride unrivaled in the luxury coach industry.

So even coupled with a high-performance diesel engine, you'll enjoy the lowest levels of vibration for the smoothest riding coach on the road.

Consider it our salute to integrity.



**Coach-Net**

Now all 2009 American Coach products come standard with one year of Coach-Net Service. 24/7, 365 days a year service is just a phone call away. See your American Coach dealer for details.



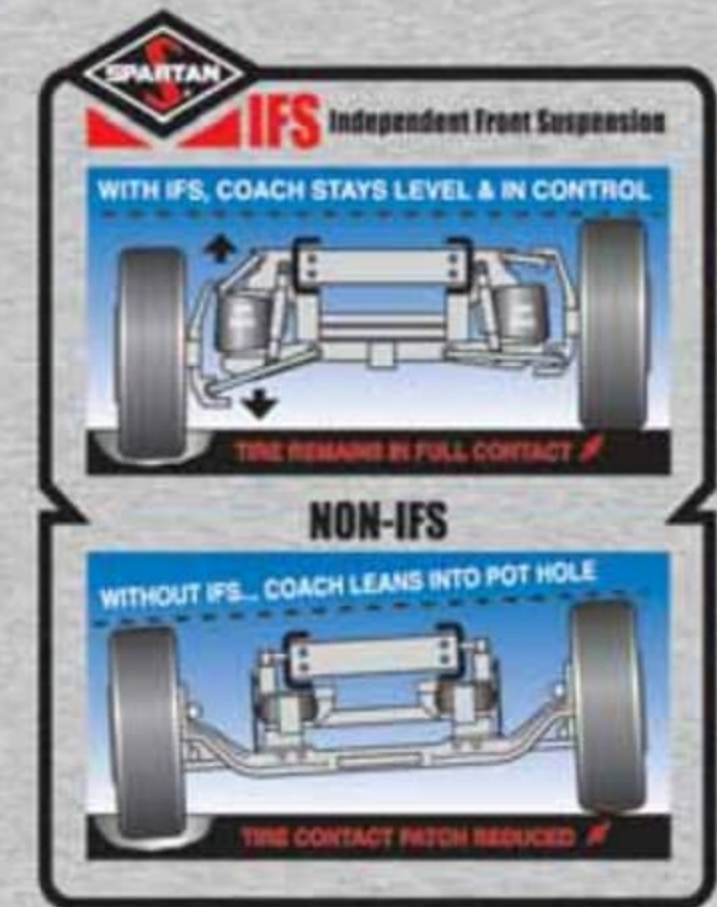
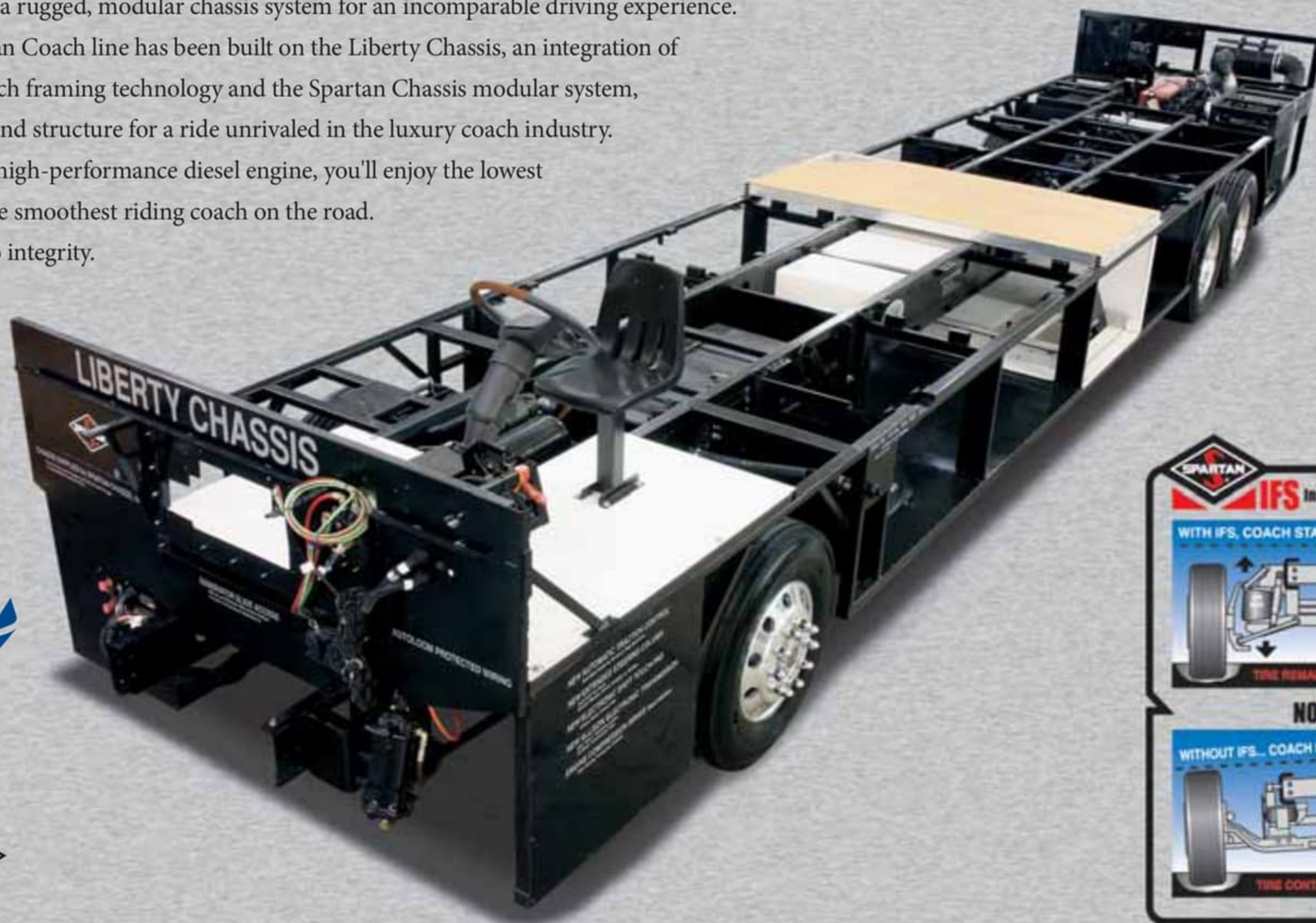
## THE LIBERTY CHASSIS

Technology this groundbreaking requires an expert team. That's why American Coach and Spartan decided to join forces - to create a rugged, modular chassis system for an incomparable driving experience.

Since 2004, the American Coach line has been built on the Liberty Chassis, an integration of superior American Coach framing technology and the Spartan Chassis modular system, providing the strength and structure for a ride unrivaled in the luxury coach industry.

So even coupled with a high-performance diesel engine, you'll enjoy the lowest levels of vibration for the smoothest riding coach on the road.

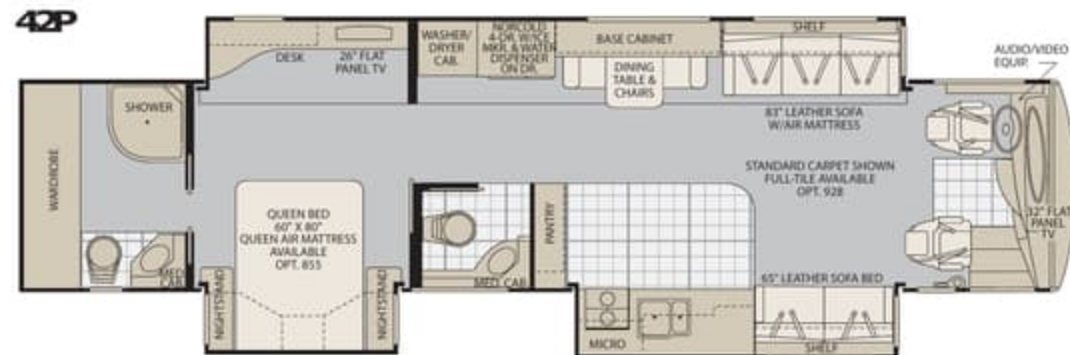
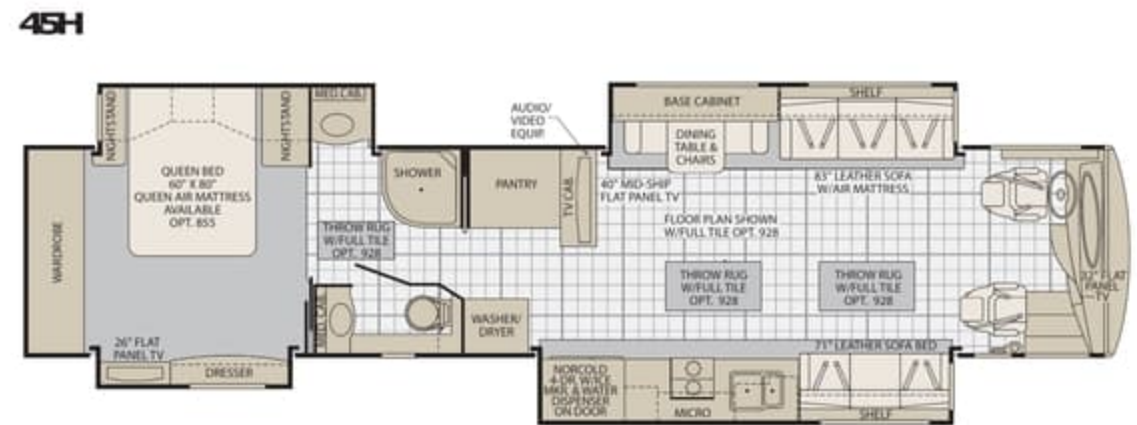
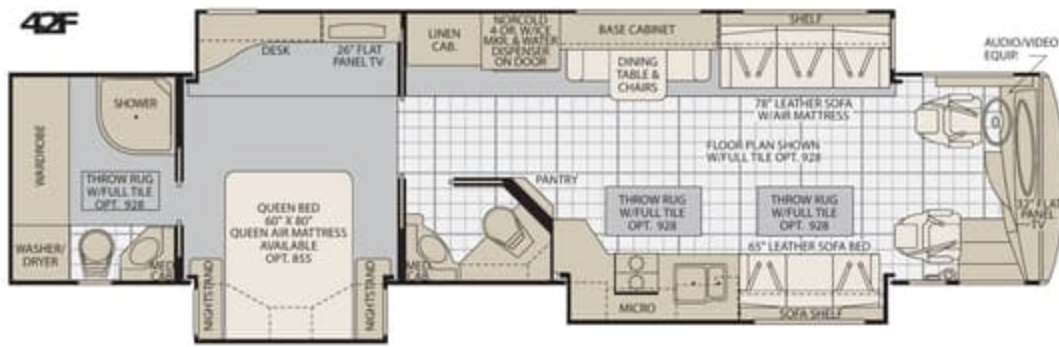
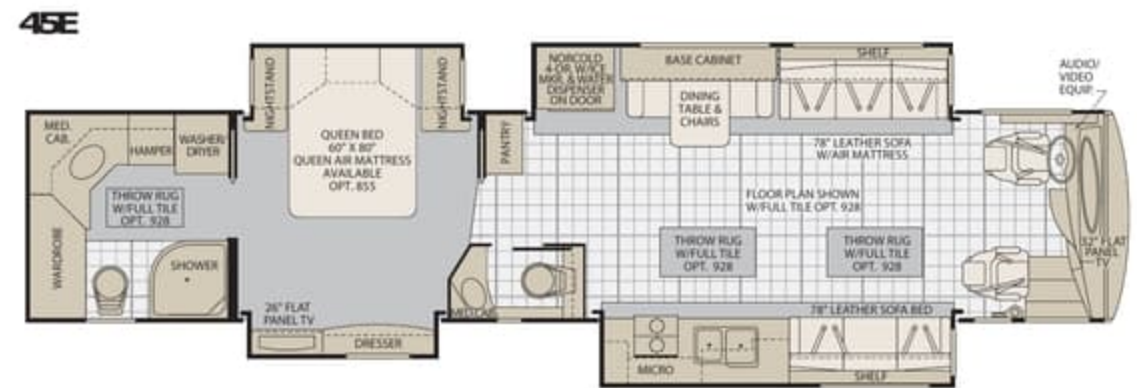
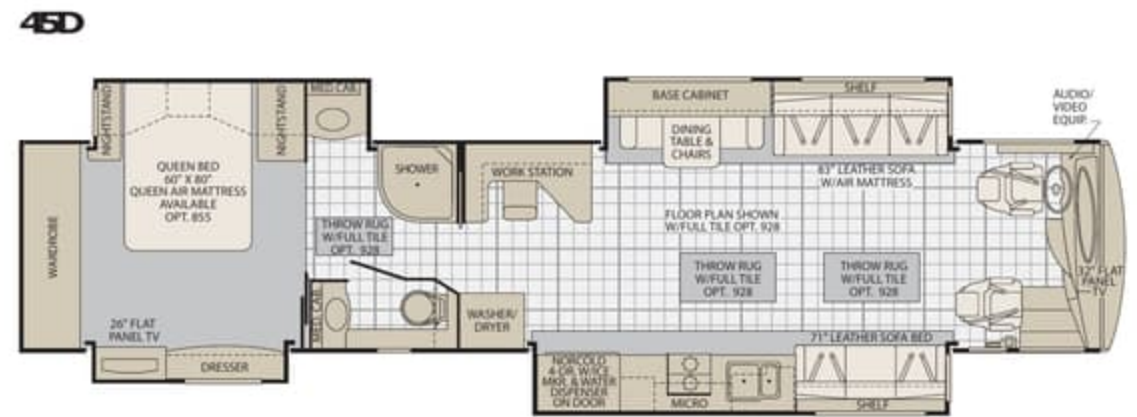
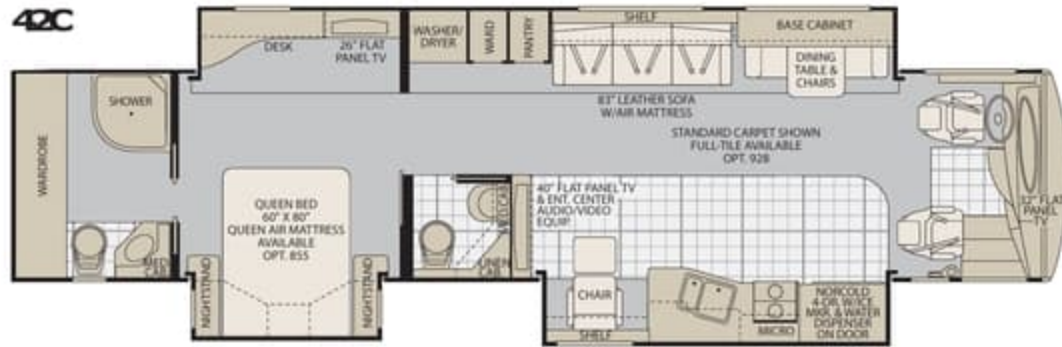
Consider it our salute to integrity.



**Coach-Net<sup>®</sup>**

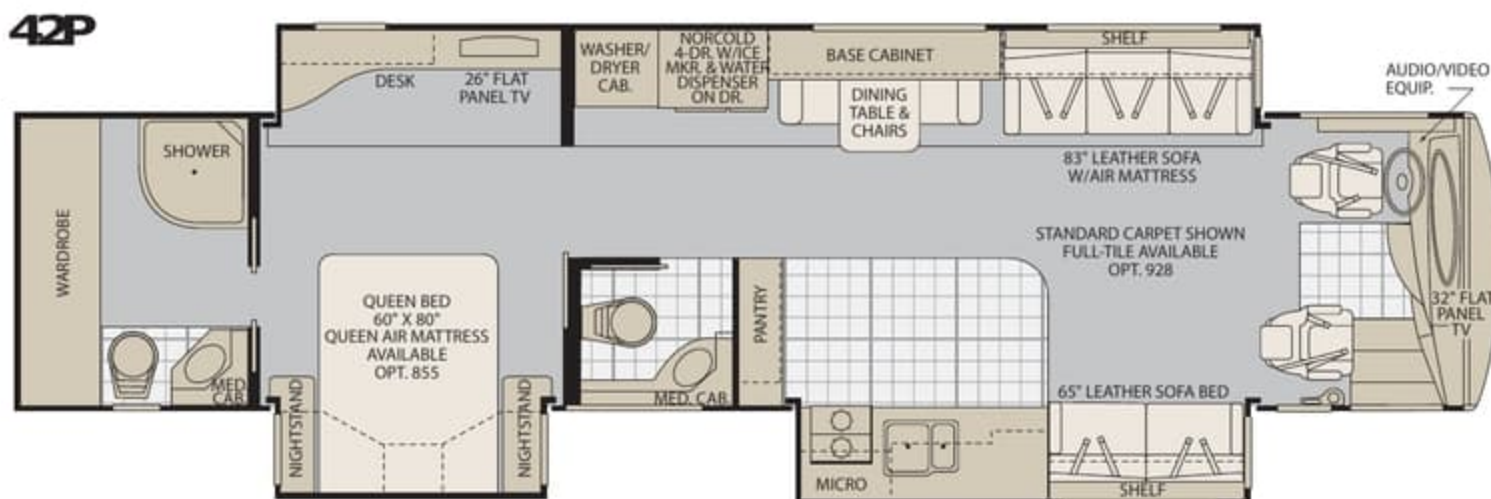
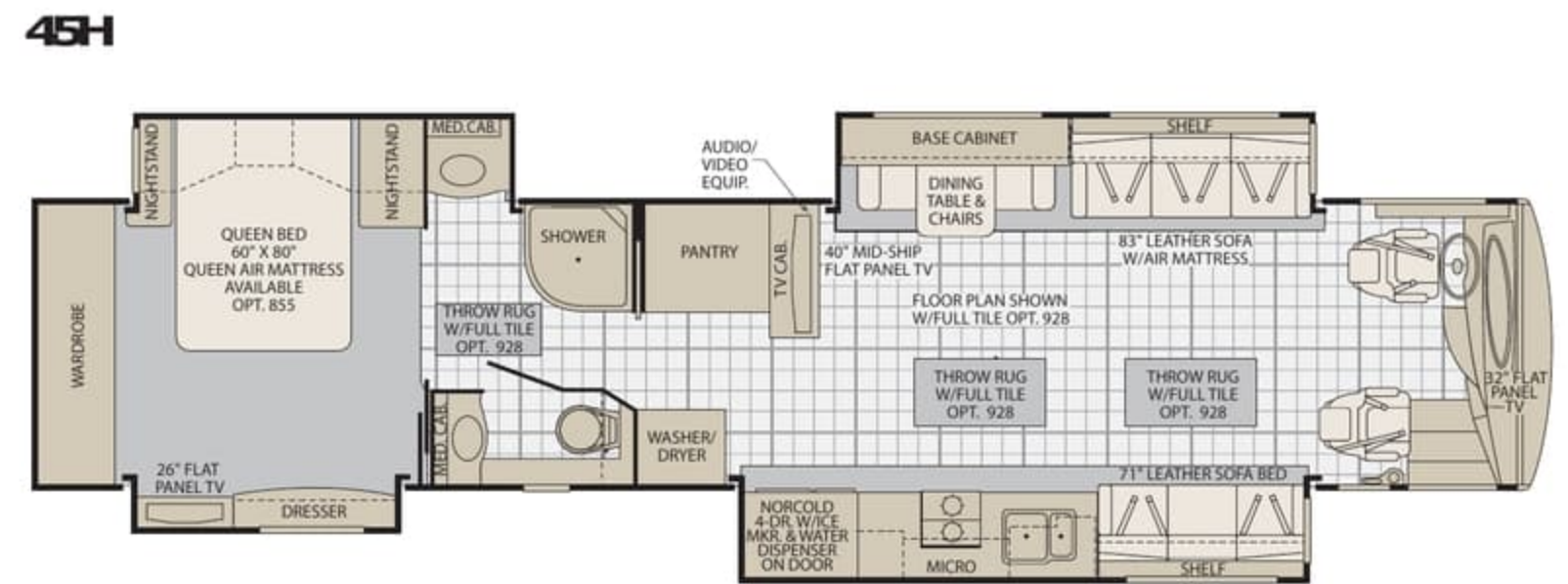
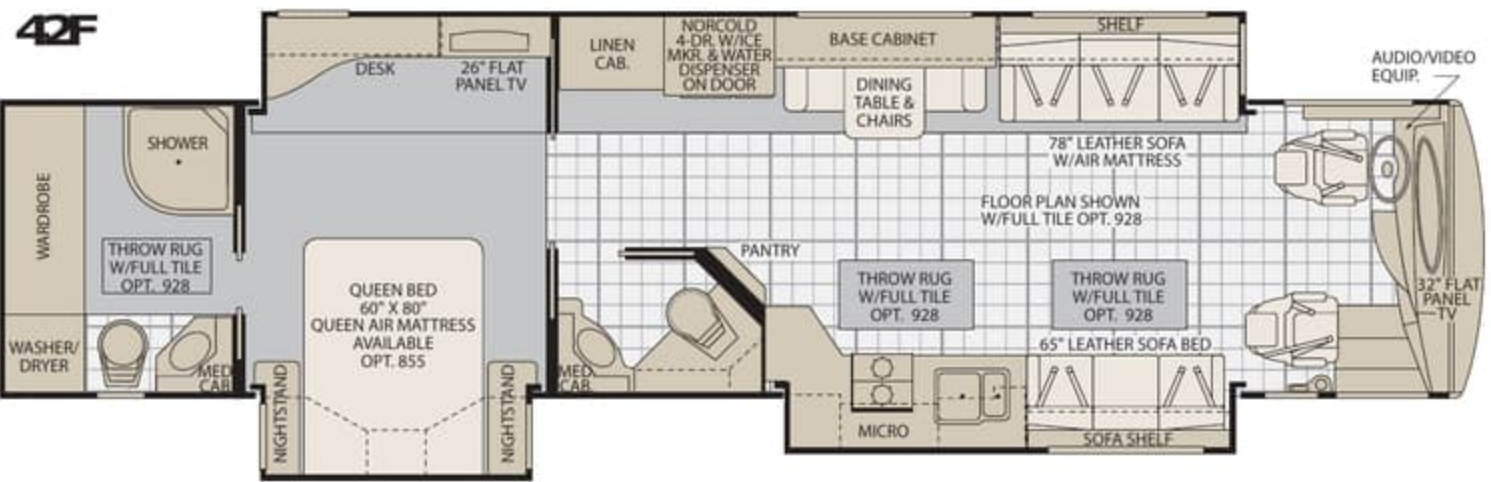
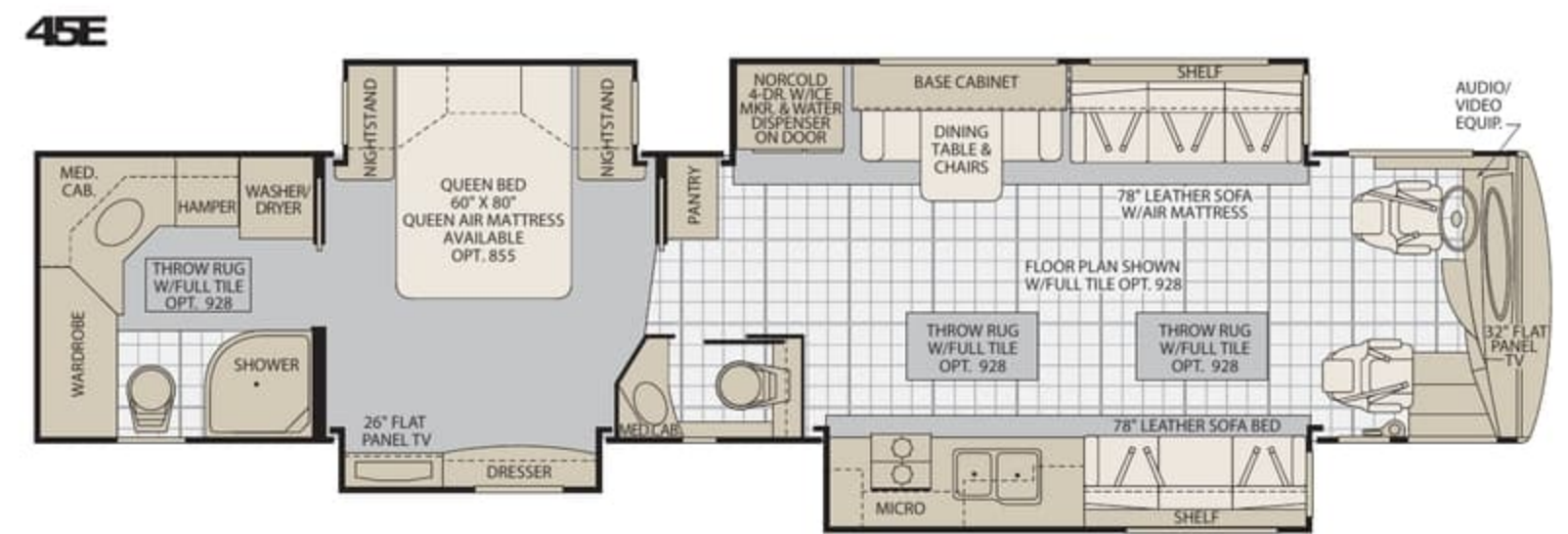
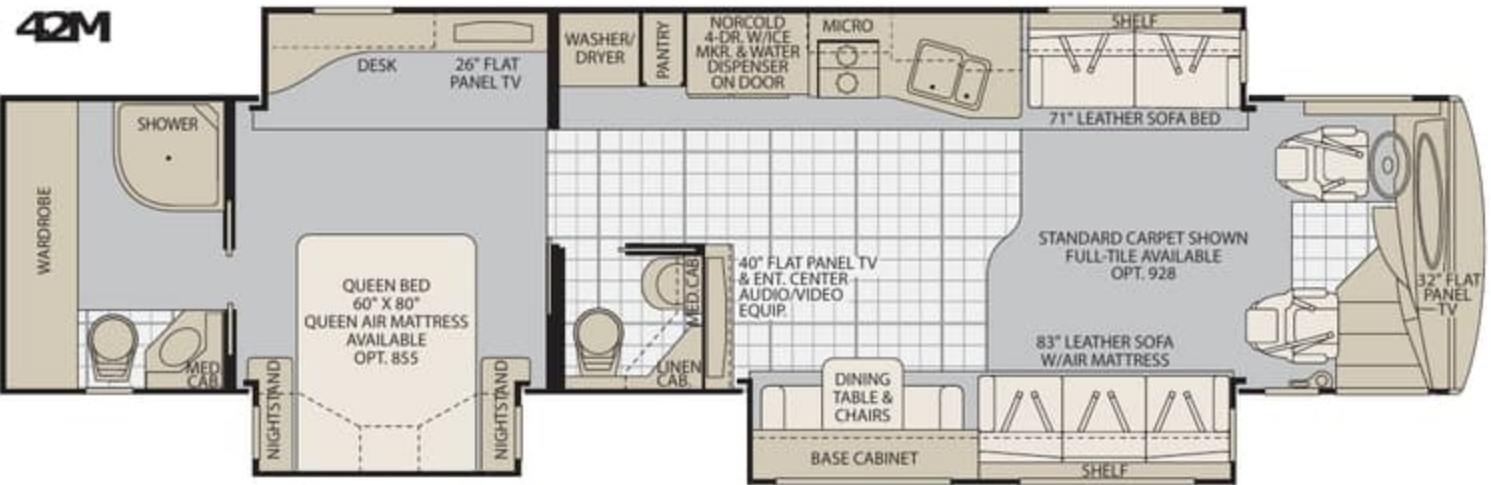
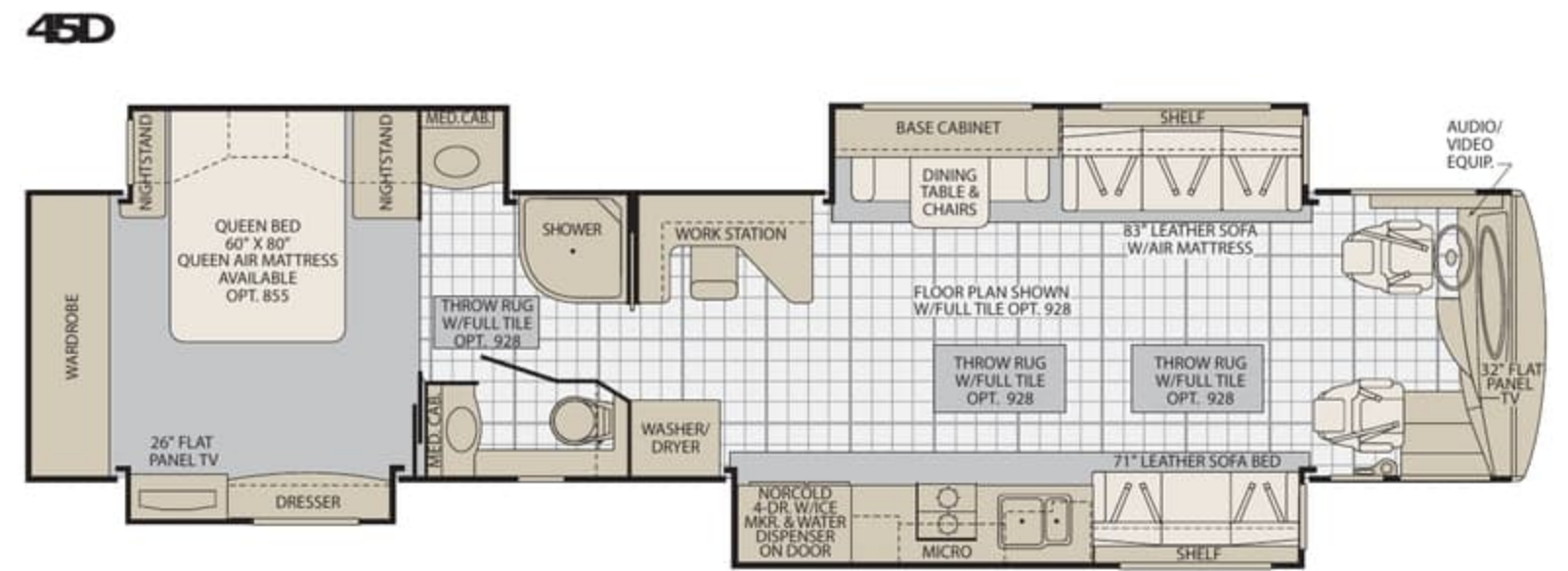
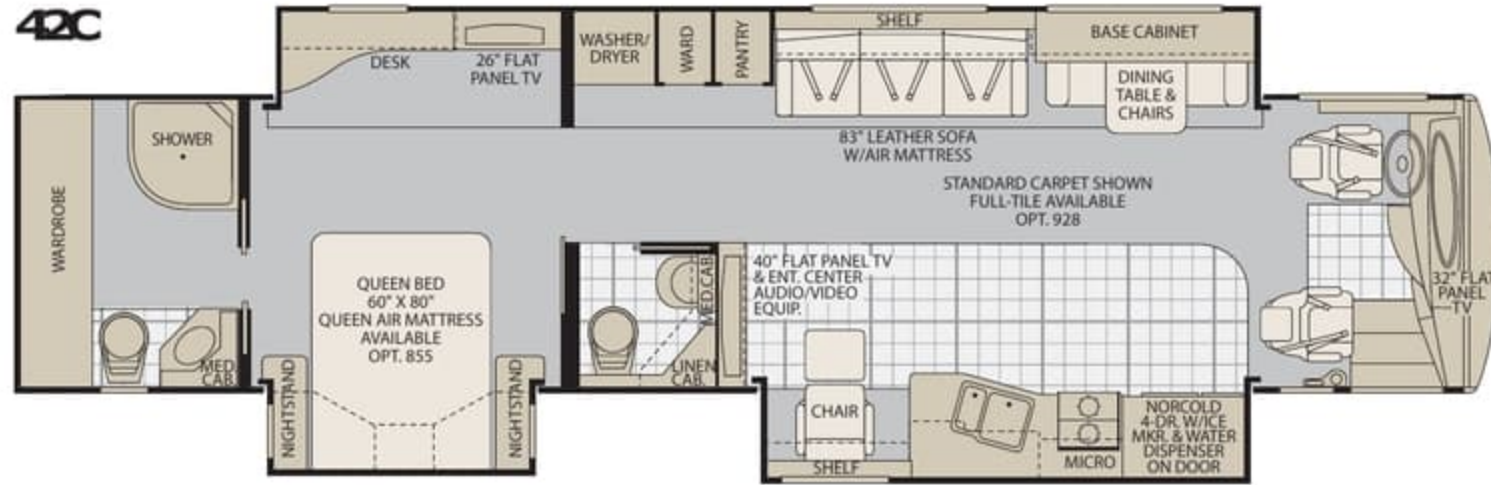
Now all 2009 American Coach products come standard with one year of Coach-Net Service. 24/7, 365 days a year service is just a phone call away. See your American Coach dealer for details.

# AMERICAN EAGLE | FLOOR PLANS



Not all available options are shown. See your American Coach dealer or visit our website at [www.AmericanCoach.com](http://www.AmericanCoach.com) to see all available options. Seatbelt configuration may vary depending on options chosen.

# AMERICAN EAGLE | FLOOR PLANS



Not all available options are shown. See your American Coach dealer or visit our website at [www.AmericanCoach.com](http://www.AmericanCoach.com) to see all available options. Seatbelt configuration may vary depending on options chosen.



## AMERICAN EAGLE | WEIGHTS AND MEASUREMENTS

<b>WEIGHTS</b>	<b>42M</b>	<b>42C</b>	<b>42F</b>	<b>42P</b>	<b>45D</b>	<b>45E</b>	<b>45H</b>
GVWR (lbs) <sup>1</sup>	46,600	46,600	46,600	46,600	46,600	46,600	46,600
Front GAWR (lbs) <sup>2</sup>	16,600	16,600	16,600	16,600	16,600	16,600	16,600
Rear GAWR (lbs) <sup>2</sup>	20,000	20,000	20,000	20,000	20,000	20,000	20,000
Tag Axle GAWR (lbs) <sup>2</sup>	10,000	10,000	10,000	10,000	10,000	10,000	10,000
GCWR (lbs) <sup>3</sup>	61,600	61,600	61,600	61,600	61,600	61,600	61,600
Hitch Rating Weight (lbs) <sup>†</sup>	15,000	15,000	15,000	15,000	15,000	15,000	15,000
Tongue Weight (lbs) <sup>†</sup>	1,500	1,500	1,500	1,500	1,500	1,500	1,500
<b>DIMENSIONS &amp; CAPACITIES</b>	<b>42M</b>	<b>42C</b>	<b>42F</b>	<b>42P</b>	<b>45D</b>	<b>45E</b>	<b>45H</b>
Wheelbase (inches)	302"	302"	302"	302"	304"	304"	304"
Overall Length <sup>4</sup>	42' 11.5"	42' 11.5"	42' 11.5"	42' 11.5"	44' 11.5"	44' 11.5"	44' 11.5"
Overall Height (w/SatDome)	13' 2¼"	13' 2¼"	13' 2¼"	13' 2¼"	13' 2¼"	13' 2¼"	13' 2¼"
Overall Width (maximum) <sup>5,6</sup>	102"	102"	102"	102"	102"	102"	102"
Interior Height (maximum)	84"	84"	84"	84"	84"	84"	84"
Interior Width (maximum)	96"	96"	96"	96"	96"	96"	96"
Fresh Water Holding Tank (gal)	90	90	120	90	90	90	90
Grey Water Holding Tank (gal)	70	70	70	70	100	100	100
Black Water Holding Tank (gal)	40	40	40	40	60	60	60
Appliance Propane Tank (gal)(WC) <sup>7</sup>	30.6	30.6	38	30.6	30.6	30.6	30.6
Fuel Capacity (gal)	150	150	150	150	150	150	150
STD Girard Patio Awnings Front/Rear	18'/16'	18'/16'	18'/16'	18'/16'	18'/18'	18'/18'	18'/18'
OPT Girard Driver Side Awnings Front/Rear	N/A	N/A	N/A	N/A	18'/18'	18'/18'	18'/18'
Liquid Weight Reference: Water (gal) = (8.3 lbs/3.8 kgs) Fuel (gal) = (7.1 lbs/3.2 kgs) Propane (gal) = (4.2 lbs/1.9 kgs) Metric Conversion: Multiply pounds x 0.453 to obtain kilograms. Multiply gallons x 3.785 to obtain liters. Multiply liters x 61 to obtain cubic inches.							

<b>CHASSIS - CUMMINS@425</b>	<b>CHASSIS - CUMMINS@500</b>
Frame: Liberty Chassis	Frame: Liberty Chassis
Engine: ISL 425 HP, 8.8L	Engine: ISL 500 HP, 10.8L
Torque: 1200 lb-ft @ 1300 RPM	Torque: 1550 lb-ft @ 1200 RPM
Transmission: Allison@3000 MH, 6 Speed w/Electronic Shifter	Transmission: Allison@Gen-4" 4000 MH, 6 Speed w/Electronic Shifter
Alternator Amps: 200 Amp, Leece Neville	Alternator Amps: 200 Amp, Leece Neville
Tires: 315/80R 22.5 Michelin@Radial	Tires: 315/80R 22.5 Michelin@Radial

- GVWR (Gross Vehicle Weight Rating) is the maximum permissible weight of this fully loaded motor home. The GVWR is equal to or greater than the sum of the (UVW) unloaded vehicle weight plus the (OCCC) occupant cargo carrying capacity\*.
  - GAWR (Gross Axle Weight Rating) is the maximum permissible loaded weight a specific axle is designed to carry.
  - GCWR (Gross Combined Weight Rating) is the value specified by the motor home manufacturer as the maximum allowable loaded weight of this motor home with its towed vehicle. Towing and braking capacities may be different. Refer to American Coach and chassis manufacturer's manuals for complete information.
  - Length measured from front bumper to rear bumper (excludes accessories).
  - Excludes safety equipment and awnings.
  - Motor homes feature a body-width over 96" which will restrict your access to certain roads. Before purchasing, you should research any state and/or province road laws which may affect your usage.
  - Tank manufacturer's listed water capacity (WC). Actual propane capacity is 80% of water listing as required by the safety code.
- N/A = Not Applicable
- \*UVW and OCCC are found on the label containing the federal certification tag in each RV.
- † The chassis manufacturer recommends the installation of a supplemental brake control system to activate the brakes on the vehicle or trailer you are towing. Hitch receiver ratings expressed are maximum for the hitch receiver installed and may require the purchase of additional equipment that is dependant on the weight of the towed load. Consult with hitch receiver manufacturer for further information.

**IMPORTANT — PLEASE READ:** Product information, photography and illustrations included in this publication were as accurate as possible at the time of printing. For further product information and changes, please visit our website at [www.AmericanCoach.com](http://www.AmericanCoach.com) or contact your local American Coach dealer. Prices, materials, design and specifications are subject to change without notice. All weights, fuel, liquid capacities and dimensions are approximate. American Coach has designed its recreational vehicles to provide a variety of uses for its customers. Each vehicle features optimal seating, sleeping, storage and fluid capacities. The user is responsible for selecting the proper combination of loads (i.e. occupants, equipment, fluids, cargo, etc.) to ensure that the vehicle's capacities are not exceeded.

## AMERICAN EAGLE | WEIGHTS AND MEASUREMENTS

WEIGHTS	42M	42C	42F	42P	45D	45E	45H
GVWR (lbs) <sup>1</sup>	46,600	46,600	46,600	46,600	46,600	46,600	46,600
Front GAWR (lbs) <sup>2</sup>	16,600	16,600	16,600	16,600	16,600	16,600	16,600
Rear GAWR (lbs) <sup>2</sup>	20,000	20,000	20,000	20,000	20,000	20,000	20,000
Tag Axle GAWR (lbs) <sup>2</sup>	10,000	10,000	10,000	10,000	10,000	10,000	10,000
GCWR (lbs) <sup>3</sup>	61,600	61,600	61,600	61,600	61,600	61,600	61,600
Hitch Rating Weight (lbs) <sup>†</sup>	15,000	15,000	15,000	15,000	15,000	15,000	15,000
Tongue Weight (lbs) <sup>†</sup>	1,500	1,500	1,500	1,500	1,500	1,500	1,500
DIMENSIONS & CAPACITIES	42M	42C	42F	42P	45D	45E	45H
Wheelbase (inches)	302"	302"	302"	302"	304"	304"	304"
Overall Length <sup>4</sup>	42' 11.5"	42' 11.5"	42' 11.5"	42' 11.5"	44' 11.5"	44' 11.5"	44' 11.5"
Overall Height (w/SatDome)	13' 2¼"	13' 2¼"	13' 2¼"	13' 2¼"	13' 2¼"	13' 2¼"	13' 2¼"
Overall Width (maximum) <sup>5,6</sup>	102"	102"	102"	102"	102"	102"	102"
Interior Height (maximum)	84"	84"	84"	84"	84"	84"	84"
Interior Width (maximum)	96"	96"	96"	96"	96"	96"	96"
Fresh Water Holding Tank (gal)	90	90	120	90	90	90	90
Grey Water Holding Tank (gal)	70	70	70	70	100	100	100
Black Water Holding Tank (gal)	40	40	40	40	60	60	60
Appliance Propane Tank (gal)(WC) <sup>7</sup>	30.6	30.6	38	30.6	30.6	30.6	30.6
Fuel Capacity (gal)	150	150	150	150	150	150	150
STD Girard Patio Awnings Front/Rear	18'/16'	18'/16'	18'/16'	18'/16'	18'/18'	18'/18'	18'/18'
OPT Girard Driver Side Awnings Front/Rear	N/A	N/A	N/A	N/A	18'/18'	18'/18'	18'/18'

Liquid Weight Reference: Water (gal) = (8.3 lbs/3.8 kgs) Fuel (gal) = (7.1 lbs/3.2 kgs) Propane (gal) = (4.2 lbs/1.9 kgs)  
 Metric Conversion: Multiply pounds x 0.453 to obtain kilograms. Multiply gallons x 3.785 to obtain liters.  
 Multiply liters x 61 to obtain cubic inches.

CHASSIS - CUMMINS®425	CHASSIS - CUMMINS®500
Frame: Liberty Chassis	Frame: Liberty Chassis
Engine: ISL 425 HP, 8.8L	Engine: ISL 500 HP, 10.8L
Torque: 1200 lb-ft @ 1300 RPM	Torque: 1550 lb-ft @ 1200 RPM
Transmission: Allison®3000 MH, 6 Speed w/Electronic Shifter	Transmission: Allison® Gen-4™ 4000 MH, 6 Speed w/Electronic Shifter
Alternator Amps: 200 Amp, Leece Neville	Alternator Amps: 200 Amp, Leece Neville
Tires: 315/80R 22.5 Michelin®Radial	Tires: 315/80R 22.5 Michelin®Radial

1. GVWR (Gross Vehicle Weight Rating) is the maximum permissible weight of this fully loaded motor home. The GVWR is equal to or greater than the sum of the (UVW) unloaded vehicle weight plus the (OCCC) occupant cargo carrying capacity\*.
  2. GAWR (Gross Axle Weight Rating) is the maximum permissible loaded weight a specific axle is designed to carry.
  3. GCWR (Gross Combined Weight Rating) is the value specified by the motor home manufacturer as the maximum allowable loaded weight of this motor home with its towed vehicle. Towing and braking capacities may be different. Refer to American Coach and chassis manufacturer's manuals for complete information.
  4. Length measured from front bumper to rear bumper (excludes accessories).
  5. Excludes safety equipment and awnings.
  6. Motor homes feature a body-width over 96" which will restrict your access to certain roads. Before purchasing, you should research any state and/or province road laws which may affect your usage.
  7. Tank manufacturer's listed water capacity (WC). Actual propane capacity is 80% of water listing as required by the safety code.
- N/A = Not Applicable
- \*UVW and OCCC are found on the label containing the federal certification tag in each RV.
- † The chassis manufacturer recommends the installation of a supplemental brake control system to activate the brakes on the vehicle or trailer you are towing. Hitch receiver ratings expressed are maximum for the hitch receiver installed and may require the purchase of additional equipment that is dependant on the weight of the towed load. Consult with hitch receiver manufacturer for further information.

**IMPORTANT — PLEASE READ:** Product information, photography and illustrations included in this publication were as accurate as possible at the time of printing. For further product information and changes, please visit our website at [www.AmericanCoach.com](http://www.AmericanCoach.com) or contact your local American Coach dealer. Prices, materials, design and specifications are subject to change without notice. All weights, fuel, liquid capacities and dimensions are approximate. American Coach has designed its recreational vehicles to provide a variety of uses for its customers. Each vehicle features optimal seating, sleeping, storage and fluid capacities. The user is responsible for selecting the proper combination of loads (i.e. occupants, equipment, fluids, cargo, etc.) to ensure that the vehicle's capacities are not exceeded.

## AMERICAN EAGLE | STANDARD AND OPTIONAL FEATURES

### INTERIOR AMENITIES

#### GENERAL AMENITIES

- |   |   |  |
|---|---|--|
| <ul style="list-style-type: none"> <li>• Hand Laid Wallpaper</li> <li>• Outlet and Telephone Jack (Multiple Locations)</li> <li>• Decorative Throw Pillows</li> <li>• Masland® Carpeting</li> <li>• Decorative Wood Window Treatments</li> <li>• Accent Rope Lighting</li> <li>• Decorative Wood Trimmed Fan-Tastic® Rain Sensor, Power Roof Vents w/3-Speed Fan (3)</li> </ul> | <ul style="list-style-type: none"> <li>• Interior MultiPlex™ Power Management Plus System™</li> <li>• TV Cable Ready</li> <li>• Solid Wood Face Framed Cabinetry and Moldings</li> <li>• Solid Wood Cabinet Doors</li> <li>• Lined Cabinet Interior Bottoms and Shelves</li> <li>• Decorative Ceiling and Air Plenum</li> <li>• Flush Bolt Latch Decorative Hardware on Pocket Doors</li> </ul> | <ul style="list-style-type: none"> <li>• Polished Porcelain Tile Floor w/ Décor Accents at Entry, Galley and Bathroom</li> </ul> <p><b>OPTIONAL</b></p> <ul style="list-style-type: none"> <li>• Custom Interior Request</li> <li>• Factory V.I.P. Delivery</li> <li>• Canadian Standards Build</li> <li>• 6 Premium Wood and 4 Fabric Décor Choices</li> <li>• Premium Glaze Wood Finish</li> </ul> |
|---|---|--|

#### DRIVER CONVENIENCE

- |   |  |   |
|---|--|---|
| <ul style="list-style-type: none"> <li>• Navion® R5000 Information and Entertainment Center; AM, FM, Single CD, MP3, Camera Monitor w/One Way Audio</li> <li>• Hardwood Dash Cabinetry w/Corian® Top and Storage Drawers</li> <li>• 6-Way Power Driver Seat w/Heat, Power Lumbar and Adjustable Arms (Leather)</li> <li>• 6-Way Power Passenger Seat w/Heat, Power Lumbar, Adjustable Arms and Electric Footrest (Leather)</li> <li>• Sirius Satellite Radio and 6-Month Subscription</li> <li>• Cruise Control</li> <li>• I.C.C. Light Switch</li> <li>• Smart Wheel w/Leather and Burl Wood Trim w/Manual Tilt, Tip, Telescope</li> </ul> | <ul style="list-style-type: none"> <li>• Top Mounted Intermittent Windshield Wiper System w/Wet Arm</li> <li>• Power Sun Shades and Blinds</li> <li>• Power Driver Window</li> <li>• One Piece Windshield Bonded to Steel</li> <li>• Windshield Washer Bottle, 2 Gallon Reservoir</li> <li>• Driver and Passenger Drink Holder</li> <li>• Driver and Passenger Map Reading Lights</li> <li>• Halogen Head Lamps</li> <li>• Denso® Dash Climate Control System</li> <li>• Adjustable Brake and Throttle Pedals</li> <li>• Compass and Exterior Temperature Gauge</li> <li>• Low Profile Automotive Style Dash Instrumentation, Back Lit Gages and Switches</li> </ul> | <ul style="list-style-type: none"> <li>• Chassis Monitoring System</li> <li>• Tag Axle Dump Switch</li> <li>• Keyless Entry Door Access w/Key Fob</li> <li>• Auxiliary Fog Lamps</li> <li>• Auxiliary Start Switch</li> <li>• CB Radio Ready (Power and Antenna)</li> <li>• Hadley® Air Horns</li> <li>• Low Level Washer Fluid Indicator</li> <li>• Multiple Auxiliary 12-Volt Dash Receptacles</li> </ul> <p><b>OPTIONAL</b></p> <ul style="list-style-type: none"> <li>• Sony® Passenger GPS Monitor</li> <li>• Pressure Pro® Active Monitoring System for Tire Pressure</li> <li>• Garmin® Navigation System</li> </ul> |
|---|--|---|

#### LIVING ROOM

- |  |  |  |
|--|--|--|
| <ul style="list-style-type: none"> <li>• Power Step Well Cover</li> <li>• Entry Step Switch at Entry Wall</li> <li>• Lighted Step Well Area</li> <li>• Large Passenger Window</li> <li>• 12V Halogen Ceiling Lighting and Reading Lights</li> <li>• Centralized Audio-Electronics</li> </ul> | <ul style="list-style-type: none"> <li>• Day/Night Pleated Shades</li> <li>• Hardwood Front TV Overhead Cabinetry</li> <li>• Raised Panel Cabinet Doors</li> <li>• Centralized Command Center</li> <li>• Automatic Generator Start System* Inverter and Battery Monitor</li> </ul> | <p><b>OPTIONAL</b></p> <ul style="list-style-type: none"> <li>• Full Tile Polished Porcelain Floor w/ Tile Accents and Area Rugs (Select Sizes)</li> </ul> |
|--|--|--|

#### GALLEY

- |  |   |  |
|--|---|--|
| <ul style="list-style-type: none"> <li>• Solid Surface Galley Top, Range and Sink Covers</li> <li>• Solid Surface Double Bowl Galley Sink</li> <li>• Porcelain Tile and Accent Glass Backsplash</li> </ul> | <ul style="list-style-type: none"> <li>• Recessed 2 Burner Cook Top</li> <li>• Solid Hardwood Drawer Fronts</li> <li>• Roller Bearing Drawer Guides, Full Extension</li> <li>• Adjustable Shelves</li> <li>• Cabinet Storage for Sink and Range Covers</li> </ul> | <ul style="list-style-type: none"> <li>• Task Halogen Lighting</li> <li>• Kohler High Rise Galley Faucet w/Pullout Sprayer</li> <li>• Silverware Tray</li> </ul> |
|--|---|--|

#### BEDROOM

- |  |   |  |
|--|---|--|
| <ul style="list-style-type: none"> <li>• Solid Wood 6 Panel Bath and Bedroom Doors</li> <li>• Solid Wood Framed Headboard w/ Padded Fabric Accent</li> <li>• Quilted Bedspread</li> <li>• Queen Innerspring Pillow Top Mattress (60" x 80")</li> <li>• Lift Up Bed w/Under Bed Storage</li> <li>• Polished Mystra® Counter and Nightstand Tops</li> <li>• Over Head Cabinet Above the Bed</li> </ul> | <ul style="list-style-type: none"> <li>• Wall Sconce Light Fixtures</li> <li>• 30" Deep Bedroom Slides</li> <li>• Day/Night Pleated Shades</li> <li>• Remote Generator Start Switch</li> <li>• Second Phone Jack</li> <li>• Cedar Lined Wardrobe</li> <li>• Wardrobe Lighting</li> <li>• Full Length Rear Wardrobe</li> <li>• Recessed Bedroom Ceiling Fan</li> <li>• Key Actuated Hidden Safe</li> </ul> | <p><b>OPTIONAL</b></p> <ul style="list-style-type: none"> <li>• King Bed with Pillow Top (72" x 80")</li> <li>• Select Comfort Queen Air Mattress w/2 Remotes</li> <li>• Select Comfort King Air Mattress w/2 Remotes</li> </ul> |
|--|---|--|

#### BATHROOM

- |   |   |  |
|---|---|--|
| <ul style="list-style-type: none"> <li>• Polished Mystra® Lawry Countertop w/Solid Surface Sink and Residential Kohler Faucet</li> <li>• Porcelain Tile and Venetian Accent Glass Backsplash</li> <li>• Medicine Cabinet</li> <li>• LED Floor Lights</li> </ul> | <ul style="list-style-type: none"> <li>• Solid Surface Shower Pan Skylight in Shower</li> <li>• Residential Hand Held Shower Head</li> <li>• Clear Glass Style Decorative Shower Glass Enclosure</li> <li>• Residential China Bowl Flush Toilet w/Hand Sprayer</li> </ul> | <ul style="list-style-type: none"> <li>• Micro Mini Blind (Bathroom Window)</li> <li>• Residential China Bowl Vacuum Flush Toilet (Rear Bath, Select Models)</li> <li>• Toilet Paper Dispenser, Towel Bar, Towel Rings, and Robe Hook</li> <li>• Countertop Edge Treatment, "Non Drip" Edge</li> </ul> |
|---|---|--|

#### FURNITURE

- |   |  |  |
|---|--|--|
| <ul style="list-style-type: none"> <li>• Villa® Leather Sofa Bed w/Air Mattress</li> <li>• Villa® Leather Sofa Bed w/Removable Arms</li> <li>• Solid Surface Dinette Table, Slide Out Extension, 2 Decorative Chairs, 2 Folding Chairs</li> </ul> | <ul style="list-style-type: none"> <li>• Decorative Dinette and Folding Guest Chairs Not Available with Face to Face Dinette Options</li> <li>• Dinette with Deep Base Cabinet Storage, File Storage and Keyboard Tray Wood and Fabric Dinette Chairs</li> </ul> | <p><b>OPTIONAL</b></p> <ul style="list-style-type: none"> <li>• Villa® Leather J-Love Seat</li> <li>• Dinette Face-to-Face Wrap Around Ensemble (Villa w/Leather)</li> </ul> |
|---|--|--|

#### APPLIANCES

- |  |  |  |
|--|--|--|
| <p><b>LIVING ROOM</b></p> <ul style="list-style-type: none"> <li>• Sony® 32" LCD HDTV</li> <li>• Bose® Lifestyle 18 Home Entertainment System</li> </ul> | <ul style="list-style-type: none"> <li>• TracVision® R5 Series "In Motion" HDTV Compatible, Dorned Digital Satellite System</li> </ul> | <p><b>OPTIONAL</b></p> <ul style="list-style-type: none"> <li>• Sony® 40" LCD HDTV (Standard 42M, 42C, 49H, Mid Ship Location)</li> <li>• TracVision® R6 Series</li> </ul> |
|--|--|--|

#### GALLEY

- |   |   |  |
|---|---|--|
| <ul style="list-style-type: none"> <li>• Norcold® 12 cu. ft. 4 Door Refrigerator, Ice Maker, Water Dispenser, 120V/Propane</li> <li>• GE Adventium® Over the Range Convection Microwave Oven</li> </ul> | <p><b>OPTIONAL</b></p> <ul style="list-style-type: none"> <li>• Insta-Hot: Hot and Cold Water Dispenser</li> <li>• Dometic® 14 cu. ft., Sidewise Refrigerator, 120V/Propane, Ice Maker, Brushed Stainless Finish</li> <li>• Recessed 3 Burner Range and Oven</li> </ul> | <ul style="list-style-type: none"> <li>• Dishwasher w/Cabinet Wood Front</li> <li>• Residential Refrigerator w/Ice Maker</li> <li>• Electric Cook top w/Dishwasher (Deletes LPG)</li> <li>• Electric Cook top (Deletes LPG)</li> </ul> |
|---|---|--|

#### GENERAL

- |   |   |  |
|---|---|--|
| <ul style="list-style-type: none"> <li>• Combination Washer/Dryer (Vented)</li> </ul> | <p><b>OPTIONAL</b></p> <ul style="list-style-type: none"> <li>• Stacked Washer/Dryer (Select Models)</li> </ul> | <ul style="list-style-type: none"> <li>• Washer/Dryer Ready w/Shelves</li> </ul> |
|---|---|--|

#### BEDROOM

- |  |   |   |
|--|---|---|
| <ul style="list-style-type: none"> <li>• Sony® 26" LCD HDTV</li> </ul> | <ul style="list-style-type: none"> <li>• Bose® 3-2-1 Home Theater System</li> </ul> | <p><b>OPTIONAL</b></p> <ul style="list-style-type: none"> <li>• Sony® 32" LCD HDTV</li> </ul> |
|--|---|---|

# AMERICAN EAGLE | STANDARD AND OPTIONAL FEATURES

## INTERIOR AMENITIES

### GENERAL AMENITIES

- |   |   |   |
|---|---|---|
| <ul style="list-style-type: none"> <li>• Hand Laid Wallpaper</li> <li>• Outlet and Telephone Jack (Multiple Locations)</li> <li>• Decorative Throw Pillows</li> <li>• Masland® Carpeting</li> <li>• Decorative Wood Window Treatments</li> <li>• Accent Rope Lighting</li> <li>• Decorative Wood Trimmed Fan-Tastic® Rain Sensor, Power Roof Vents w/3-Speed Fan (3)</li> </ul> | <ul style="list-style-type: none"> <li>• Interior MultiPlex™ Power Management Plus System™</li> <li>• TV Cable Ready</li> <li>• Solid Wood Face Framed Cabinetry and Moldings</li> <li>• Solid Wood Cabinet Doors</li> <li>• Lined Cabinet Interior Bottoms and Shelves</li> <li>• Decorative Ceiling and Air Plenum</li> <li>• Flush Bolt Latch Decorative Hardware on Pocket Doors</li> </ul> | <ul style="list-style-type: none"> <li>• Polished Porcelain Tile Floor w/ Décor Accents at Entry, Galley and Bathroom</li> </ul> <p>OPTIONAL</p> <ul style="list-style-type: none"> <li>• Custom Interior Request</li> <li>• Factory V.I.P. Delivery</li> <li>• Canadian Standards Build</li> <li>• 6 Premium Wood and 4 Fabric Décor Choices</li> <li>• Premium Glaze Wood Finish</li> </ul> |
|---|---|---|

### DRIVER CONVENIENCE

- |   |  |  |
|---|--|--|
| <ul style="list-style-type: none"> <li>• Navion® R5000 Information and Entertainment Center; AM, FM, Single CD, MP3, Camera Monitor w/One Way Audio</li> <li>• Hardwood Dash Cabinetry w/Corian® Top and Storage Drawers</li> <li>• 6-Way Power Driver Seat w/Heat, Power Lumbar and Adjustable Arms (Leather)</li> <li>• 6-Way Power Passenger Seat w/Heat, Power Lumbar, Adjustable Arms and Electric Footrest (Leather)</li> <li>• Sirius Satellite Radio and 6-Month Subscription</li> <li>• Cruise Control</li> <li>• I.C.C. Light Switch</li> <li>• Smart Wheel w/Leather and Burl Wood Trim w/Manual Tilt, Tip, Telescope</li> </ul> | <ul style="list-style-type: none"> <li>• Top Mounted Intermittent Windshield Wiper System w/Wet Arm</li> <li>• Power Sun Shades and Blinds</li> <li>• Power Driver Window</li> <li>• One Piece Windshield Bonded to Steel</li> <li>• Windshield Washer Bottle, 2 Gallon Reservoir</li> <li>• Driver and Passenger Drink Holder</li> <li>• Driver and Passenger Map Reading Lights</li> <li>• Halogen Head Lamps</li> <li>• Denso® Dash Climate Control System</li> <li>• Adjustable Brake and Throttle Pedals</li> <li>• Compass and Exterior Temperature Gauge</li> <li>• Low Profile Automotive Style Dash Instrumentation, Back Lit Gages and Switches</li> </ul> | <ul style="list-style-type: none"> <li>• Chassis Monitoring System</li> <li>• Tag Axle Dump Switch</li> <li>• Keyless Entry Door Access w/Key Fob</li> <li>• Auxiliary Fog Lamps</li> <li>• Auxiliary Start Switch</li> <li>• CB Radio Ready (Power and Antenna)</li> <li>• Hadley® Air Horns</li> <li>• Low Level Washer Fluid Indicator</li> <li>• Multiple Auxiliary 12-Volt Dash Receptacles</li> </ul> <p>OPTIONAL</p> <ul style="list-style-type: none"> <li>• Sony® Passenger GPS Monitor</li> <li>• Pressure Pro® Active Monitoring System for Tire Pressure</li> <li>• Garmin® Navigation System</li> </ul> |
|---|--|--|

### LIVING ROOM

- |  |  |   |
|--|--|---|
| <ul style="list-style-type: none"> <li>• Power Step Well Cover</li> <li>• Entry Step Switch at Entry Wall</li> <li>• Lighted Step Well Area</li> <li>• Large Passenger Window</li> <li>• 12V Halogen Ceiling Lighting and Reading Lights</li> <li>• Centralized Audio-Electronics</li> </ul> | <ul style="list-style-type: none"> <li>• Day/Night Pleated Shades</li> <li>• Hardwood Front TV Overhead Cabinetry</li> <li>• Raised Panel Cabinet Doors</li> <li>• Centralized Command Center</li> <li>• Automatic Generator Start System• Inverter and Battery Monitor</li> </ul> | <p>OPTIONAL</p> <ul style="list-style-type: none"> <li>• Full Tile Polished Porcelain Floor w/ Tile Accents and Area Rugs (Select Sizes)</li> </ul> |
|--|--|---|

### GALLEY

- |  |   |  |
|--|---|--|
| <ul style="list-style-type: none"> <li>• Solid Surface Galley Top, Range and Sink Covers</li> <li>• Solid Surface Double Bowl Galley Sink</li> <li>• Porcelain Tile and Accent Glass Backsplash</li> </ul> | <ul style="list-style-type: none"> <li>• Recessed 2 Burner Cook Top</li> <li>• Solid Hardwood Drawer Fronts</li> <li>• Roller Bearing Drawer Guides, Full Extension</li> <li>• Adjustable Shelves</li> <li>• Cabinet Storage for Sink and Range Covers</li> </ul> | <ul style="list-style-type: none"> <li>• Task Halogen Lighting</li> <li>• Kohler High Rise Galley Faucet w/Pullout Sprayer</li> <li>• Silverware Tray</li> </ul> |
|--|---|--|

### BEDROOM

- |   |   |   |
|---|---|---|
| <ul style="list-style-type: none"> <li>• Solid Wood 6 Panel Bath and Bedroom Doors</li> <li>• Solid Wood Framed Headboard w/ Padded Fabric Accent</li> <li>• Quilted Bedspread</li> <li>• Queen Innerspring Pillow Top Mattress (60" x 80")</li> <li>• Lift Up Bed w/Under Bed Storage</li> <li>• Polished Mystera® Counter and Nightstand Tops</li> <li>• Over Head Cabinet Above the Bed</li> </ul> | <ul style="list-style-type: none"> <li>• Wall Sconce Light Fixtures</li> <li>• 30" Deep Bedroom Slides</li> <li>• Day/Night Pleated Shades</li> <li>• Remote Generator Start Switch</li> <li>• Second Phone Jack</li> <li>• Cedar Lined Wardrobe</li> <li>• Wardrobe Lighting</li> <li>• Full Length Rear Wardrobe</li> <li>• Recessed Bedroom Ceiling Fan</li> <li>• Key Actuated Hidden Safe</li> </ul> | <p>OPTIONAL</p> <ul style="list-style-type: none"> <li>• King Bed with Pillow Top (72" x 80")</li> <li>• Select Comfort Queen Air Mattress w/2 Remotes</li> <li>• Select Comfort King Air Mattress w/2 Remotes</li> </ul> |
|---|---|---|

### BATHROOM

- |  |   |  |
|--|---|--|
| <ul style="list-style-type: none"> <li>• Polished Mystera® Lavvy Countertop w/Solid Surface Sink and Residential Kohler Faucet</li> <li>• Porcelain Tile and Venetian Accent Glass Backsplash</li> <li>• Medicine Cabinet</li> <li>• LED Floor Lights</li> </ul> | <ul style="list-style-type: none"> <li>• Solid Surface Shower Pan Skylight in Shower</li> <li>• Residential Hand Held Shower Head</li> <li>• Clear Glass Style Decorative Shower Glass Enclosure</li> <li>• Residential China Bowl Flush Toilet w/Hand Sprayer</li> </ul> | <ul style="list-style-type: none"> <li>• Micro Mini Blind (Bathroom Window)</li> <li>• Residential China Bowl Vacuum Flush Toilet (Rear Bath, Select Models)</li> <li>• Toilet Paper Dispenser, Towel Bar, Towel Rings, and Robe Hook</li> <li>• Countertop Edge Treatment, "Non Drip" Edge</li> </ul> |
|--|---|--|

### FURNITURE

- |   |  |   |
|---|--|---|
| <ul style="list-style-type: none"> <li>• Villa® Leather Sofa Bed w/Air Mattress</li> <li>• Villa® Leather Sofa Bed w/Removable Arms</li> <li>• Solid Surface Dinette Table, Slide Out Extension, 2 Decorative Chairs, 2 Folding Chairs</li> </ul> | <ul style="list-style-type: none"> <li>• Decorative Dinette and Folding Guest Chairs Not Available with Face to Face Dinette Options</li> <li>• Dinette with Deep Base Cabinet Storage, File Storage and Keyboard Tray Wood and Fabric Dinette Chairs</li> </ul> | <p>OPTIONAL</p> <ul style="list-style-type: none"> <li>• Villa® Leather J-Love Seat</li> <li>• Dinette Face-to-Face Wrap Around Ensemble (Villa w/Leather)</li> </ul> |
|---|--|---|

### APPLIANCES

- |   |  |   |
|---|--|---|
| <p>LIVING ROOM</p> <ul style="list-style-type: none"> <li>• Sony® 32" LCD HDTV</li> <li>• Bose® Lifestyle 18 Home Entertainment System</li> </ul> | <ul style="list-style-type: none"> <li>• TracVision® R5 Series "In Motion" HDTV Compatible, Dorned Digital Satellite System</li> </ul> | <p>OPTIONAL</p> <ul style="list-style-type: none"> <li>• Sony® 40" LCD HDTV (Standard 42M, 42C, 45H, Mid Ship Location)</li> <li>• TracVision® R6 Series</li> </ul> |
|---|--|---|

### GALLEY

- |  |   |   |
|--|---|---|
| <ul style="list-style-type: none"> <li>• Norcold® 12 cu. ft. 4 Door Refrigerator, Icemaker, Water Dispenser, 120V/Propane</li> <li>• GE Advantium® Over the Range Convection Microwave Oven</li> </ul> | <p>OPTIONAL</p> <ul style="list-style-type: none"> <li>• Insta-Hot: Hot and Cold Water Dispenser</li> <li>• Dometic® 14 cu. ft., Sidewise Refrigerator, 120V/Propane, Icemaker, Brushed Stainless Finish</li> <li>• Recessed 3 Burner Range and Oven</li> </ul> | <ul style="list-style-type: none"> <li>• Dishwasher w/Cabinet Wood Front</li> <li>• Residential Refrigerator w/Icemaker</li> <li>• Electric Cook top w/Dishwasher (Deletes LPG)</li> <li>• Electric Cook top (Deletes LPG)</li> </ul> |
|--|---|---|

### GENERAL

- |   |  |  |
|---|--|--|
| <ul style="list-style-type: none"> <li>• Combination Washer/Dryer (Vented)</li> </ul> | <p>OPTIONAL</p> <ul style="list-style-type: none"> <li>• Stacked Washer/Dryer (Select Models)</li> </ul> | <ul style="list-style-type: none"> <li>• Washer/Dryer Ready w/Shelves</li> </ul> |
|---|--|--|

### BEDROOM

- |  |   |  |
|--|---|--|
| <ul style="list-style-type: none"> <li>• Sony® 26" LCD HDTV</li> </ul> | <ul style="list-style-type: none"> <li>• Bose® 3-2-1 Home Theater System</li> </ul> | <p>OPTIONAL</p> <ul style="list-style-type: none"> <li>• Sony® 32" LCD HDTV</li> </ul> |
|--|---|--|

## HEATING / PLUMBING

- AquaHot Heating System, 50,000 Btu
- Heated Basement
- (3) 15.0M Low Profile Roof Air Conditioners
- Heat Pump on Rear AC Unit
- Hinged Plumbing and Access Panels (Galley and Bath Areas)
- Propane (LPG) Tank
- Fresh Water Gravity Fill
- Holding Tanks w/Low Point Drain Valves
- Multi-Point Water Pump Switching
- Variable Speed Water Pump
- Whole Coach Water Filtration System
- Dual Holding Tank San-T-Flush™ System

### OPTIONAL

- Heated Full Tile Floor
- Heated Tile Floor Galley and Lavvy
- Waste Management System (Macerator)

## SAFETY

- Smoke Detector/Alarm
- Carbon (CO) Monoxide Detector
- Fire Extinguisher
- Propane (LP) Leak Detector
- 3 Point Integrated Seat Belts at Driver and Passenger Seats
- Side Docking Lamps (4)
- Momentary Courtesy Lighting at Entry and Passenger Area
- Lighted Exterior Grab Handle w/Logo
- Emergency Egress Windows (2)
- Turn Signal Indicators

## AMERICAN EAGLE | STANDARD AND OPTIONAL FEATURES

## EXTERIOR AMENITIES

### GENERAL AMENITIES

- Diamond Shield Protective Front Mask
- 2800-Watt Pure Sine Wave Inverter / Charger
- Maintenance Free (4) Absorbed Glass Mat 6-Volt Batteries (Group GC2)
- Inverter and Battery Monitor
- Surge Guard™ - Electrical System Protection (Includes Surge Protection)
- Energy Management System (50 Amp)
- Battery Disconnect Switches for House and Chassis
- Park Telephone Ready
- Hella Docking Lamps (4)
- Sliding Front Fiberglass Cap (Bottom)
- Power Generator Slide
- Utility Light-Front and Rear
- Dual Locking Fuel Fill Doors
- Fresh Water Hose (25')
- Sensa Tank Level Monitoring System (Interior and Exterior Monitor)
- Spray Wand w/Soap Dispenser and Paper Towel Holder
- Chrome Headlight Bezels
- Power Cord Reel, 50 AMP
- Full Width Rear Rock Guard w/ Stainless Logo Panel
- Mud Flaps, Front and Rear
- Roof Mounted Engine Air Intake
- Two Piece Aluminum Rear Ladder
- Integrated Rear Upper Fiberglass Wing Deflector
- Large Rear Engine Access Door w/ Power Assist Struts
- Brushed Chrome Rear Access Grill
- Solar Charging Panel (63w)
- Power Luggage Door Locks (Select Doors) w/Remote Key Fob
- Hinge Pin Retention System (Holds Luggage Doors Open)
- Porch Light
- Keyless Entry Touch Pad / Entry Handle Integrated
- "One Key" System (Luggage and Entry Doors)
- Brushed Stainless Kick Plate Under Entry Door
- Power Double Entry Step "Bus Style"
- Electrical Outlets in Exterior Luggage Compartments
- Air Inflation Hose w/Fittings

### CONSTRUCTION

- Electro-Coated Heavy Duty
- Steel Framing (Liberty Chassis)
- Aluminum Framed Wall Construction
- Interlocking Aluminum Framing Connections; Roof, Sidewall, Floor
- Steel Construction on Front Bulkhead
- Vacu-bond® Sidewall, Roof, Floor and Rear Wall
- Dense Bead Foam Insulation Throughout
- 5 Layer Flooring with 3" Bead Foam Insulation
- 6 Layer Roof with 5 1/4" Bead Foam Insulation (at Centerline)
- DuPont® Exterior Automotive Full Body Paint w/Sand and Buff Finish
- Gel Coat Fiberglass Exterior Sidewalls w/No Wood Substrate
- Full Fiberglass Front and Rear Caps
- Fiberglass Front and Rear Quarter Panels
- Fiberglass Molded Front Bumper
- One-Piece Fiberglass Roof w/Radius Corners and Seamless Transition to Caps

- Chrome, Heated Side View Mirrors w/Remote Adjustment, Turn Signal Indicators and Side Vision Cameras are Integrated into the Mirrors
- Convenience Light in Utility Compartment

### OPTIONAL

- 2 Exterior Graphic Design Choices - Crusader or Freedom Graphic Schemes
- Power Water Hose Reel
- Power Cord Remote (Key FOB)
- Spot Light
- Custom Exterior Paint Color Request
- 1st Full Bay 90" Slide Tray
- 1st Full Bay 36" and 54" Slide Tray
- 2nd Full Bay 90" Slide Tray (Select Models)
- 2nd Full Bay 36" and 54" Slide Tray (Select Models)
- 2nd Full Bay 54" Slide Tray w/ AquaHot System

### CHASSIS / ENGINE

- Liberty Chassis (Patent Pending) w/ Electro Coated Platform
- Independent Front Suspension w/55 Degree Steering Angle
- Allison® 3000 MH, 6-Speed Automatic Transmission (w/425 HP Engines)
- Allison® 4000 MH, 6-Speed Automatic Transmission (w/500 HP Engines)
- 2 Stage Engine Brake (425HP - 500HP)
- 315/80R LRH 22.5" Radial Tires
- 200 Amp Leaco Neville Alternator
- Group 31 Chassis Batteries (2)
- Air Ride Suspension w/Bilstein® Shocks
- Aluminum Wheels
- Anti-Lock Brake System (ABS)
- Automatic 4-Point Hydraulic Leveling System
- Automatic Traction Control
- Chassis Filter Service Center
- Engine Block Heater
- Full Air Brakes w/Automatic Slack Adjusters
- Tire Pressure Check Gauge (Manual)
- Trailer Hitch Receiver 15,000 lbs.†

### APPLIANCES

- Onan® 10.0kW Quiet Diesel Generator, Power Slide-Out
- Power TV Antenna w/Audible "Antennae Up" Warning
- OPTIONAL
- Exterior Entertainment Center with Easy Swing Extension Arm and Cabinet Storage (Includes: Sony® 26" LCD TV, AM, FM, CD, DVD Player.)
- Norcold® 100 lb Chest Refrigerator/Freezer 12V/120V (Requires Tray Option)
- Additional 2000-Watt Pure Sine Inverter / Charger, (4) AGM Batteries

### AWINGS / WINDOWS / DOORS

- 30" Avionics Entry Door with Dead Bolt and Pneumatic Air Latches
- Entry Screen Door with Logo Kick Plate
- Powered Entry Door Awning
- Slide-Out Topper Awnings
- Tinted Dual Pane Windows w/ Screens
- Roof Mounted Girard Power Awnings with Wind Sensor System (2 Door Side Awnings, Sofa-Dinette Window Awning)
- OPTIONAL
- Roof Mounted Girard Power Awnings w/Dual Wind Sensor Systems (2 Door Side Awnings / 2 Driver Side Awnings-Select Models)
- Girard Roof Mount Awnings w/Auto Valance

† The chassis manufacturer recommends the installation of a supplemental brake control system to activate the brakes on the vehicle or trailer you are towing. Hitch receiver ratings expressed are maximum for the hitch receiver installed and may require the purchase of additional equipment that is dependent on the weight of the towed load. Consult with hitch receiver manufacturer for further information.

## HEATING / PLUMBING

- AquaHot Heating System, 50,000 Btu
- Heated Basement
- (3) 15.0M Low Profile Roof Air Conditioners
- Heat Pump on Rear AC Unit
- Hinged Plumbing and Access Panels (Galley and Bath Areas)
- Propane (LPG) Tank
- Fresh Water Gravity Fill
- Holding Tanks w/Low Point Drain Valves
- Multi-Point Water Pump Switching
- Variable Speed Water Pump
- Whole Coach Water Filtration System
- Dual Holding Tank San-T-Flush™ System

### OPTIONAL

- Heated Full Tile Floor
- Heated Tile Floor Galley and Lavvy
- Waste Management System (Macerator)

## SAFETY

- Smoke Detector/Alarm
- Carbon (CO) Monoxide Detector
- Fire Extinguisher
- Propane (LP) Leak Detector
- 3 Point Integrated Seat Belts at Driver and Passenger Seats
- Side Docking Lamps (4)
- Momentary Courtesy Lighting at Entry and Passenger Area
- Lighted Exterior Grab Handle w/Logo
- Emergency Egress Windows (2)
- Turn Signal Indicators

## AMERICAN EAGLE | STANDARD AND OPTIONAL FEATURES

## EXTERIOR AMENITIES

### GENERAL AMENITIES

- Diamond Shield Protective Front Mask
- 2800-Watt Pure Sine Wave Inverter / Charger
- Maintenance Free (4) Absorbed Glass Mat 6-Volt Batteries (Group GC2)
- Inverter and Battery Monitor
- Surge Guard™ - Electrical System Protection (Includes Surge Protection)
- Energy Management System (50 Amp)
- Battery Disconnect Switches for House and Chassis
- Park Telephone Ready
- Hella Docking Lamps (4)
- Sliding Front Fiberglass Cap (Bottom)
- Power Generator Slide
- Utility Light-Front and Rear
- Dual Locking Fuel Fill Doors
- Fresh Water Hose (25')
- Sensa Tank Level Monitoring System (Interior and Exterior Monitor)
- Spray Wand w/Soap Dispenser and Paper Towel Holder
- Chrome Headlight Bezels
- Power Cord Reel, 50 AMP
- Full Width Rear Rock Guard w/ Stainless Logo Panel
- Mud Flaps, Front and Rear
- Roof Mounted Engine Air Intake
- Two Piece Aluminum Rear Ladder
- Integrated Rear Upper Fiberglass Wing Deflector
- Large Rear Engine Access Door w/ Power Assist Struts
- Brushed Chrome Rear Access Grill
- Solar Charging Panel (63w)
- Power Luggage Door Locks (Select Doors) w/Remote Key Fob
- Hinge Pin Retention System (Holds Luggage Doors Open)
- Porch Light
- Keyless Entry Touch Pad / Entry Handle Integrated
- "One Key" System (Luggage and Entry Doors)
- Brushed Stainless Kick Plate Under Entry Door
- Power Double Entry Step "Bus Style"
- Electrical Outlets in Exterior Luggage Compartments
- Air Inflation Hose w/Fittings

- Chrome, Heated Side View Mirrors w/Remote Adjustment, Turn Signal Indicators and Side Vision Cameras are Integrated into the Mirrors
- Convenience Light in Utility Compartment

### OPTIONAL

- 2 Exterior Graphic Design Choices - Crusader or Freedom Graphic Schemes
- Power Water Hose Reel
- Power Cord Remote (Key FOB)
- Spot Light
- Custom Exterior Paint Color Request
- 1st Full Bay 90" Slide Tray
- 1st Full Bay 36" and 54" Slide Tray
- 2nd Full Bay 90" Slide Tray (Select Models)
- 2nd Full Bay 36" and 54" Slide Tray (Select Models)
- 2nd Full Bay 54" Slide Tray w/ AquaHot System

### CONSTRUCTION

- Electro-Coated Heavy Duty
- Steel Framing (Liberty Chassis)
- Aluminum Framed Wall Construction
- Interlocking Aluminum Framing Connections; Roof, Sidewall, Floor
- Steel Construction on Front Bulkhead
- Vacu-bond® Sidewall, Roof, Floor and Rear Wall
- Dense Bead Foam Insulation Throughout
- 5 Layer Flooring with 3" Bead Foam Insulation
- 6 Layer Roof with 5 1/4" Bead Foam Insulation (at Centerline)
- DuPont® Exterior Automotive Full Body Paint w/Sand and Buff Finish
- Gel Coat Fiberglass Exterior Sidewalls w/No Wood Substrate
- Full Fiberglass Front and Rear Caps
- Fiberglass Front and Rear Quarter Panels
- Fiberglass Molded Front Bumper
- One-Piece Fiberglass Roof w/Radius Corners and Seamless Transition to Caps
- Insulated Aluminum Framed and Paneled Luggage Compartment Doors
- Sound Absorption Material Front, Rear and Engine
- Pebble Finished Fiberglass Basement Lining
- Heated Water and Holding Tank Compartments
- Central Electrical Panel for 120V/12V AC/DC
- TuffPEX® Plumbing System

### CHASSIS / ENGINE

- Liberty Chassis (Patent Pending) w/ Electro Coated Platform
- Independent Front Suspension w/55 Degree Steering Angle
- Allison® 3000 MH, 6-Speed Automatic Transmission (w/425 HP Engines)
- Allison® 4000 MH, 6-Speed Automatic Transmission (w/500 HP Engines)
- 2 Stage Engine Brake (425HP - 500HP)
- 315/80R LRH 22.5" Radial Tires
- 200 Amp Leece Neville Alternator
- Group 31 Chassis Batteries (2)
- Air Ride Suspension w/Bilstein® Shocks
- Aluminum Wheels
- Anti-Lock Brake System (ABS)
- Automatic 4-Point Hydraulic Leveling System
- Automatic Traction Control
- Chassis Filter Service Center
- Engine Block Heater
- Full Air Brakes w/Automatic Slack Adjusters
- Tire Pressure Check Gauge (Manual)
- Trailer Hitch Receiver 15,000 lbs.†

### OPTIONAL

- Spartan® M MGT, Modular Chassis System w/Cummins ISL 425HP (42' Models)
- Spartan® K2, Modular Chassis System w/Cummins ISM 500HP (42' - 45' Models)
- Automatic 4-Point Dual Leveling, Air and Hydraulic

### APPLIANCES

- Onan® 10.0kW Quiet Diesel Generator, Power Slide-Out
- Power TV Antenna w/Audible "Antennae Up" Warning
- OPTIONAL
- Exterior Entertainment Center with Easy Swing Extension Arm and Cabinet Storage (Includes: Sony® 26" LCD TV, AM, FM, CD, DVD Player.)
- Norcold® 100 lb Chest Refrigerator/Freezer 12V/120V (Requires Tray Option)
- Additional 2000-Watt Pure Sine Inverter / Charger, (4) AGM Batteries

### AWINGS / WINDOWS / DOORS

- 30" Avionics Entry Door with Dead Bolt and Pneumatic Air Latches
- Entry Screen Door with Logo Kick Plate
- Powered Entry Door Awning
- Slide-Out Topper Awnings
- Tinted Dual Pane Windows w/ Screens
- Roof Mounted Girard Power Awnings with Wind Sensor System (2 Door Side Awnings, Sofa-Dinette Window Awning)
- OPTIONAL
- Roof Mounted Girard Power Awnings w/Dual Wind Sensor Systems (2 Door Side Awnings / 2 Driver Side Awnings-Select Models)
- Girard Roof Mount Awnings w/Auto Valance

† The chassis manufacturer recommends the installation of a supplemental brake control system to activate the brakes on the vehicle or trailer you are towing. Hitch receiver ratings expressed are maximum for the hitch receiver installed and may require the purchase of additional equipment that is dependent on the weight of the towed load. Consult with hitch receiver manufacturer for further information.



*American Coach*®

THE OFFICIAL LUXURY COACH OF THE AMERICAN ROAD

For more information, visit us at [www.AmericanCoach.com](http://www.AmericanCoach.com) or call us at 800.854.1344

© 2008 Fleetwood Enterprises, Inc. Printed in the USA. Inventory Control Number AE09B1, 8/08. Model Year 2009. First Edition.



*American Coach*®

THE OFFICIAL LUXURY COACH OF THE AMERICAN ROAD

For more information, visit us at [www.AmericanCoach.com](http://www.AmericanCoach.com) or call us at 800.854.1344

© 2008 Fleetwood Enterprises, Inc. Printed in the USA. Inventory Control Number AE09B1, 8/08. Model Year 2009. First Edition.