

YOUR BRASS RING. YOUR OYSTER.  
YOUR SHANGRI-LA.  
ALL ROLLED INTO ONE.

*REVOLUTION LE*  
CLASS A DIESEL



 *FLEETWOOD.*

2009 REVOLUTION LE



YOUR BRASS RING. YOUR OYSTER.  
YOUR SHANGRI-LA.  
ALL ROLLED INTO ONE.

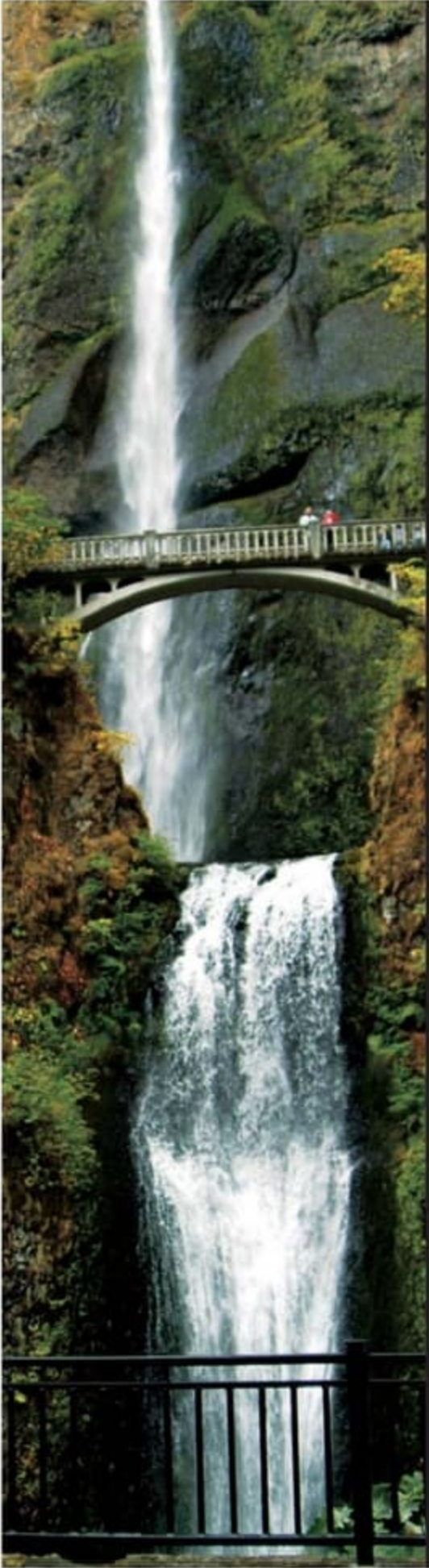
*REVOLUTION LE*  
CLASS A DIESEL



 **FLEETWOOD.**

2009 REVOLUTION LE





## IT'S TIME TO OWN YOUR ULTIMATE DREAM.

The Revolution LE is so much more than a wildly luxurious coach – it's a high-water mark in your life. It's a bold sign of success, independence and innovative style. There's simply no other coach that can match its potent combination of knock-out good looks, masterful technology and tactile opulence. As a Revolution LE owner, you'll enjoy the freedom to travel as the wind blows, and the means to get there in extravagant comfort. In other words, you don't just own the road... you conquer it with cachet.

### Quality



There's no cutting corners. Skilled craftsmen build every Fleetwood RV for maximum durability and longevity.



REVOLUTION

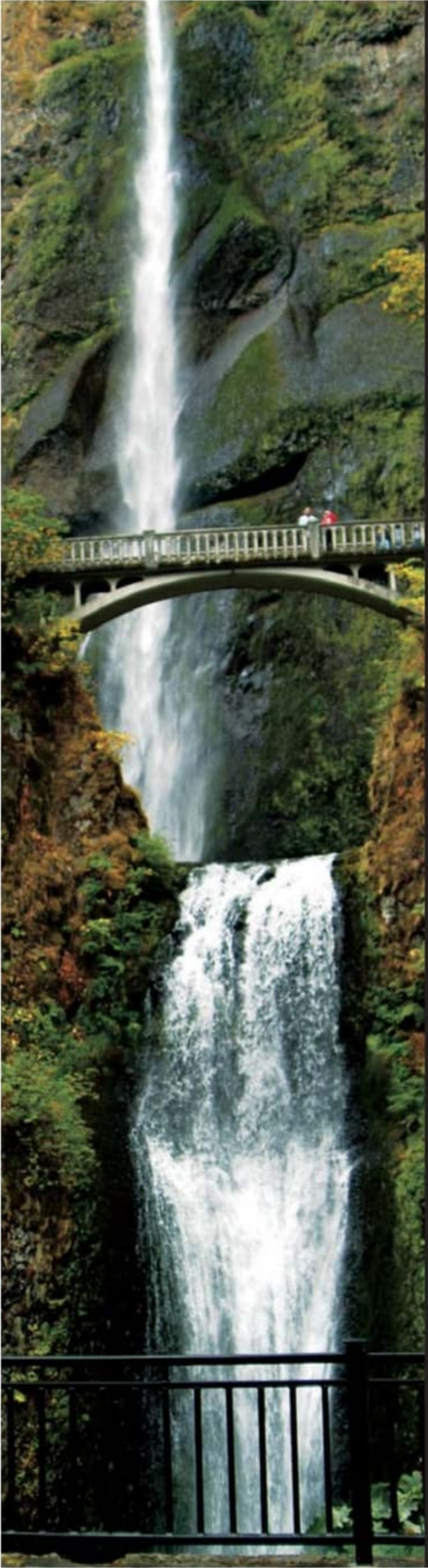


REVOLUTION LE 42K  
shown in Aged Bronze  
interior décor with Rich  
Mahogany wood cabinetry.

### Why Buy Revolution?







## IT'S TIME TO OWN YOUR ULTIMATE DREAM.

The Revolution LE is so much more than a wildly luxurious coach – it's a high-water mark in your life. It's a bold sign of success, independence and innovative style. There's simply no other coach that can match its potent combination of knock-out good looks, masterful technology and tactile opulence. As a Revolution LE owner, you'll enjoy the freedom to travel as the wind blows, and the means to get there in extravagant comfort. In other words, you don't just own the road... you conquer it with cachet.


### Quality



There's no cutting corners. Skilled craftsmen build every Fleetwood RV for maximum durability and longevity.



REVOLUTION



REVOLUTION LE 42K  
shown in Aged Bronze  
interior décor with Rich  
Mahogany wood cabinetry.

### Why Buy Revolution?







#### Style to Burn

Thanks to non-traditional styling and sleek design, Revolution LE stands out from the crowd. But it's likely to attract one.

#### Best of Everything

Feeling right at home? That's no accident. The name-brand furnishings, appliances and electronics represent the absolute best.

#### Grand Appeal

Owning a Revolution LE shows you've arrived... before you've even left the curb. You're part of a select group who appreciates the finest things in life.

#### A Superior Ride

Our exclusive Liberty Chassis makes Revolution LE arguably one of the best-riding diesel coaches on the market. "Smooth as silk" is a fitting description.

#### Impressive Power

The mighty 400HP Cummins® ISL 8.9L engine puts mighty power underfoot. So you can put the pedal to the luxuriously carpeted flooring.





### Style to Burn

Thanks to non-traditional styling and sleek design, Revolution LE stands out from the crowd. But it's likely to attract one.

### Best of Everything

Feeling right at home? That's no accident. The name-brand furnishings, appliances and electronics represent the absolute best.

### Grand Appeal

Owning a Revolution LE shows you've arrived... before you've even left the curb. You're part of a select group who appreciates the finest things in life.


### A Superior Ride

Our exclusive Liberty Chassis makes Revolution LE arguably one of the best-riding diesel coaches on the market. "Smooth as silk" is a fitting description.

### Impressive Power

The mighty 400HP Cummins® ISL 8.9L engine puts mighty power underfoot. So you can put the pedal to the luxuriously carpeted flooring.





## BE PREPARED FOR GUESTS TO SWOON.

A few steps inside the coach, guests are sometimes taken aback by the luxury around them. Surveying the sparkling mirrors, the gleam of the stainless steel appliances and the designer fabrics, it's understandable. Just set your friends down in a supple Ultraleather™ sofa with a cool drink, and they'll adjust quickly. Then they may note designer touches like the rich hardwood cabinetry and the ceramic tile flooring set on the diagonal. Most likely, they'll want to stay for dinner.

### Trust



More people trust Fleetwood. After all, we've spent over 50 years perfecting RVs, earning the loyalty of generations of RVers.



REVOLUTION




THE HOME THEATER SYSTEM in the living room combines a Samsung 32" LCD HDTV, DVD player and domed TracVision® digital satellite system for a high-quality entertainment experience.



THE FREE-STANDING DINETTE offers a romantic setting for two. With plush seats that invite lingering and a hardwood tabletop, it feels like a private table at your favorite bistro.





## BE PREPARED FOR GUESTS TO SWOON.

A few steps inside the coach, guests are sometimes taken aback by the luxury around them. Surveying the sparkling mirrors, the gleam of the stainless steel appliances and the designer fabrics, it's understandable. Just set your friends down in a supple Ultraleather™ sofa with a cool drink, and they'll adjust quickly. Then they may note designer touches like the rich hardwood cabinetry and the ceramic tile flooring set on the diagonal. Most likely, they'll want to stay for dinner.

### Trust



More people trust Fleetwood. After all, we've spent over 50 years perfecting RVs, earning the loyalty of generations of RVers.



REVOLUTION



THE HOME THEATER SYSTEM in the living room combines a Samsung 32" LCD HDTV, DVD player and domed TracVision® digital satellite system for a high-quality entertainment experience.



THE FREE-STANDING DINETTE offers a romantic setting for two. With plush seats that invite lingering and a hardwood tabletop, it feels like a private table at your favorite bistro.





THE PULL-OUT PANTRY (select models) gives you extra counter space for food preparation or entertaining. Below, full-extension drawers allow you to store items at the very back.



THE FISHER & PAYKEL DISHDRAWER® (optional) offers convenient clean up. It's tastefully concealed in the cabinetry and opens like a kitchen drawer. With a choice of wash programs, it can handle your heavy dishes or delicate glassware.



THE GALLEY features stainless steel appliances, including a roomy Norcold® refrigerator with an ice maker. Offering 12 cu. feet of space, it includes a water dispenser in the door. There's also a recessed 3-burner stove with oven (optional) and a GE® convection microwave that cooks faster than a traditional oven.



THE OVERHEAD CABINETRY features new side-swinging doors for easier access. Deep enough to store full-size plates, the shelves are adjustable and lined to protect your dishes in transit.



SOLID SURFACE COUNTERTOPS look beautiful, but work hard. The material resists stains and scratches, and its high-gloss finish reflects your good taste.





**THE PULL-OUT PANTRY** (select models) gives you extra counter space for food preparation or entertaining. Below, full-extension drawers allow you to store items at the very back.



**THE FISHER & PAYKEL DISHDRAWER®** (optional) offers convenient clean up. It's tastefully concealed in the cabinetry and opens like a kitchen drawer. With a choice of wash programs, it can handle your heavy dishes or delicate glassware.



**THE GALLEY** features stainless steel appliances, including a roomy Norcold® refrigerator with an ice maker. Offering 12 cu. feet of space, it includes a water dispenser in the door. There's also a recessed 3-burner stove with oven (optional) and a GE® convection microwave that cooks faster than a traditional oven.



**THE OVERHEAD CABINETRY** features new side-swinging doors for easier access. Deep enough to store full-size plates, the shelves are adjustable and lined to protect your dishes in transit.



**SOLID SURFACE COUNTERTOPS** look beautiful, but work hard. The material resists stains and scratches, and its high-gloss finish reflects your good taste.



# "MAJESTIC" MAY BE AN UNDERSTATEMENT.

Purple mountains don't have the majesty market cornered. This bedroom suite is so majestic, you'll be singing its praises. With a 30" bedroom slide-out, it's a wide-open space. Acres of cushy queen-size mattress beckon under stately coffered ceilings, adorned with a cooling ceiling fan (optional on select models). Sparkling halogen lighting with dimmers sets off the glow of rich hardwood cabinetry. With a retreat this grand, you'll be finding excuses to hit the hay early.

## Passion



We're truly passionate about the RV lifestyle. Fleetwood was founded by RV enthusiasts, and that tradition continues today.



REVOLUTION



THE SINK offers fashionable high-gloss countertops, mirrored cabinetry to hold your grooming supplies, and vanity lighting to help you look your best.



THE SECOND SINK AREA (optional on 42N model only) provides a perfect make-up center or shaving station when the main bathroom is in use. That way you can both get ready for a big night out. Under-the-sink storage stows your essentials out of sight.



THE SHOWER provides a lavish setting to prepare for the day. It features a Moen® hand-held showerhead for total relaxation, obscured glass for privacy, and a skylight for natural lighting.



# "MAJESTIC" MAY BE AN UNDERSTATEMENT.

Purple mountains don't have the majesty market cornered. This bedroom suite is so majestic, you'll be singing its praises. With a 30" bedroom slide-out, it's a wide-open space. Acres of cushy queen-size mattress beckon under stately coffered ceilings, adorned with a cooling ceiling fan (optional on select models). Sparkling halogen lighting with dimmers sets off the glow of rich hardwood cabinetry. With a retreat this grand, you'll be finding excuses to hit the hay early.

## Passion



We're truly passionate about the RV lifestyle. Fleetwood was founded by RV enthusiasts, and that tradition continues today.



REVOLUTION



THE SINK offers fashionable high-gloss countertops, mirrored cabinetry to hold your grooming supplies, and vanity lighting to help you look your best.



THE SECOND SINK AREA (optional on 42N model only) provides a perfect make-up center or shaving station when the main bathroom is in use. That way you can both get ready for a big night out. Under-the-sink storage stows your essentials out of sight.



THE SHOWER provides a lavish setting to prepare for the day. It features a Moen® hand-held showerhead for total relaxation, obscured glass for privacy, and a skylight for natural lighting.





THE DESK (42K model only) is a great place to plan your next adventure or write friends and family.

THE STACKABLE WASHER/DRYER (most models) is an option you may not want to travel without. Hidden inside a hardwood cabinet, it's the perfect way to keep clothes clean for your entire journey.



BEDROOM ENTERTAINMENT CENTER lets you laze in bed and catch some TV or a movie. The 19" Samsung® LCD HDTV (26" LCD HDTV in 42K and 42W models) and the home theater system with DVD player delivers incredible sound and clarity. Below, a handsome dresser offers storage for linens and such.

THE BEDROOM SUITE is even sweeter at night, when you're slumbering on the restful queen-size pillowtop innerspring mattress. For those who prefer dual comfort zones, the dual control mattress is a tempting option.







THE DESK (42K model only) is a great place to plan your next adventure or write friends and family.

THE STACKABLE WASHER/DRYER (most models) is an option you may not want to travel without. Hidden inside a hardwood cabinet, it's the perfect way to keep clothes clean for your entire journey.



BEDROOM ENTERTAINMENT CENTER lets you laze in bed and catch some TV or a movie. The 19" Samsung® LCD HDTV (26" LCD HDTV in 42K and 42W models) and the home theater system with DVD player delivers incredible sound and clarity. Below, a handsome dresser offers storage for linens and such.

THE BEDROOM SUITE is even sweeter at night, when you're slumbering on the restful queen-size pillowtop innerspring mattress. For those who prefer dual comfort zones, the dual control mattress is a tempting option.





## THE ORIGINAL POWER TRIP.

Ah, it's good to be king of the road. That's how you'll feel settled into Revolution LE's jet plane-like cockpit, every control within your reach. Our highly skilled engineers spent countless hours refining the design for your comfort, convenience and safety. So you'll feel just as great at mile 2,000 as you did at mile 20. Strap in, captain.

# 400HP

THE 400HP CUMMINS® 8.9L ENGINE with 1,200 pounds of torque, keeps things humming right along. Powerful enough to get you through every curve and hill climb, it's also got the gusto to tow a full-size vehicle for touring the town.†

THE KEYLESS REMOTE ENTRY system allows you to lock and unlock your coach with the push of a button.



THE PIONEER® MULTIMEDIA NAVIGATION SYSTEM gives you a ton of data and some entertainment, too. The color back-up monitor helps you reverse safely, thanks to a rear vision camera. To get you where you're going, a touch-screen GPS system is included. There's also an AM/FM radio with CD player, and it's Sirius Satellite Radio® ready.



REVOLUTION



# THE ORIGINAL POWER TRIP.

Ah, it's good to be king of the road. That's how you'll feel settled into Revolution LE's jet plane-like cockpit, every control within your reach. Our highly skilled engineers spent countless hours refining the design for your comfort, convenience and safety. So you'll feel just as great at mile 2,000 as you did at mile 20. Strap in, captain.



REVOLUTION

# 400HP

THE 400HP CUMMINS® 8.9L ENGINE with 1,200 pounds of torque, keeps things humming right along. Powerful enough to get you through every curve and hill climb, it's also got the gusto to tow a full-size vehicle for touring the town.†

THE KEYLESS REMOTE ENTRY system allows you to lock and unlock your coach with the push of a button.



THE PIONEER® MULTIMEDIA NAVIGATION SYSTEM gives you a ton of data and some entertainment, too. The color back-up monitor helps you reverse safely, thanks to a rear vision camera. To get you where you're going, a touch-screen GPS system is included. There's also an AM/FM radio with CD player, and it's Sirius Satellite Radio® ready.





THE POWER VISORS cut the sun's glare with the touch of a button, allowing you to make adjustments with precision.



THE DASH STORAGE is a wonder of innovative design. Within that stylishly rounded dash, you're able to keep those items you need on the drive, from eyeglasses to pencils, maps to mints. All neatly organized and nearby.



THE ULTRALEATHER™ DRIVER AND PASSENGER SEATS are much more than meets the eye. Inside the buttery soft UltraLeather™ upholstery is a Flexsteel® frame, ergonomically engineered so you can sit for hours without becoming fatigued. Both seats are heated for those frosty winter mornings and include integrated seatbelts for comfort. The passenger even gets a footrest.



THE COCKPIT AREA lets you take in the scenery – and stay in control. The instrument panel is integrated with the steering column, so it can tilt and telescope to many positions for maximum visibility and comfort. The oversized, padded Smart Wheel puts essential controls at your fingertips, and is soft to the touch for long-driving comfort.





THE POWER VISORS cut the sun's glare with the touch of a button, allowing you to make adjustments with precision.



THE DASH STORAGE is a wonder of innovative design. Within that stylishly rounded dash, you're able to keep those items you need on the drive, from eyeglasses to pencils, maps to mints. All neatly organized and nearby.



THE ULTRALEATHER™ DRIVER AND PASSENGER SEATS are much more than meets the eye. Inside the buttery soft Ultraleather™ upholstery is a Flexsteel® frame, ergonomically engineered so you can sit for hours without becoming fatigued. Both seats are heated for those frosty winter mornings and include integrated seatbelts for comfort. The passenger even gets a footrest.



THE COCKPIT AREA lets you take in the scenery – and stay in control. The instrument panel is integrated with the steering column, so it can tilt and telescope to many positions for maximum visibility and comfort. The oversized, padded Smart Wheel puts essential controls at your fingertips, and is soft to the touch for long-driving comfort.



## CHOOSE YOUR FAVORITE FLAVOR OF EYE CANDY.

Explore our range of stunning exteriors, available in  
Blaze or Shock Wave graphics. Bold, bolder or boldest –  
the choice is yours.

### SHOCK WAVE GRAPHICS\*



Black Gold



Desert Sand



Gold Starfire



Midnight Blue



Onyx



Pearl



Red Wine



White Shadow

Granite Pearl  
Shown in  
Blaze graphics



\* See your Fleetwood dealer or visit our website at [www.fleetwoodrv.com](http://www.fleetwoodrv.com)  
to view all graphic and color choices.



## CHOOSE YOUR FAVORITE FLAVOR OF EYE CANDY.

Explore our range of stunning exteriors, available in  
Blaze or Shock Wave graphics. Bold, bolder or boldest –  
the choice is yours.

### SHOCK WAVE GRAPHICS\*



Black Gold



Desert Sand



Gold Starfire



Midnight Blue



Onyx



Pearl



Red Wine



White Shadow

Granite Pearl  
Shown in  
Blaze graphics



\* See your Fleetwood dealer or visit our website at [www.fleetwoodrv.com](http://www.fleetwoodrv.com)  
to view all graphic and color choices.



# PICK FROM A MENU WHERE EVERYTHING LOOKS GOOD.

You can order your Revolution LE just the way you like it, selecting from three lustrous wood finishes and three delectable interior décor palettes.

## AGED BRONZE

Living/Dining Room



Dinette Cushions



Accent Fabric



Ultraleather™  
Driver and Front  
Passenger Seats,  
Sofa

Bedroom



Bedspread &  
Pillow Shams



Accent Fabric

## AFTER MIDNIGHT

Living/Dining Room



Dinette Cushions



Accent Fabric



Ultraleather™  
Driver and Front  
Passenger Seats,  
Sofa

Bedroom



Bedspread &  
Pillow Shams



Accent Fabric

## LIQUID SILVER

Living/Dining Room



Dinette Cushions



Accent Fabric



Ultraleather™  
Driver and Front  
Passenger Seats,  
Sofa

Bedroom



Bedspread &  
Pillow Shams



Accent Fabric

## WOOD FINISHES



Regency Cherry



Natural Cherry



Rich Mahogany



REVOLUTION



# PICK FROM A MENU WHERE EVERYTHING LOOKS GOOD.

You can order your Revolution LE just the way you like it, selecting from three lustrous wood finishes and three delectable interior décor palettes.

## AGED BRONZE

Living/Dining Room



Dinette Cushions



Accent Fabric



Ultraleather™  
Driver and Front  
Passenger Seats,  
Sofa

Bedroom



Bedspread &  
Pillow Shams



Accent Fabric

## AFTER MIDNIGHT

Living/Dining Room



Dinette Cushions



Accent Fabric



Ultraleather™  
Driver and Front  
Passenger Seats,  
Sofa

Bedroom



Bedspread &  
Pillow Shams



Accent Fabric

## LIQUID SILVER

Living/Dining Room



Dinette Cushions



Accent Fabric



Ultraleather™  
Driver and Front  
Passenger Seats,  
Sofa

Bedroom



Bedspread &  
Pillow Shams



Accent Fabric

## WOOD FINISHES



Regency Cherry



Natural Cherry



Rich Mahogany



REVOLUTION



## SOMETIMES, WHAT'S ON THE OUTSIDE REALLY DOES COUNT.

Revolution LE's exterior boasts more than good looks. You'll enjoy dozens of features that are helpful, comfortable, or just plain cool. Here are a few.

- ① DUAL PANE WINDOWS offer insulation from the summer heat and reduce noise inside the coach. They also work in tandem with the Revolution LE's Energy Management System to save energy.
- ② SIDE-HINGED LUGGAGE DOORS (select doors) open sideways and lock into place for added convenience and safety when loading up.



Vehicle shown in Gold Starfire with Shock Wave exterior graphics.

- ③ 8.0 KW DIESEL GENERATOR is powerful and extremely quiet so you won't be disturbed when docked.
- ④ THREE AIR CONDITIONERS are mounted on the roof to improve cooling and free up additional basement storage (Dual on 40E and 40R models).

- ① FIBERGLASS ROOF is one solid piece for leak-free living. Just as importantly, its dome shape and radius corners give a sleek architectural look.
- ② DUPONT® PAINT is carefully applied in two stages for maximum durability and lasting beauty. A final clear coat protects and beautifies the ultra-glossy exterior.
- ③ WINDOW AWNINGS protect your interior fabrics from fading, and keep the inside cooler.



Vehicle shown in Gold Starfire with Shock Wave exterior graphics.

- ④ IN-MOTION TRACVISION® SATELLITE SYSTEM (optional) tracks as you drive, so it delivers a continuous TV signal.
- ⑤ CHROME LOGOS gleam in the sunlight, proclaiming the prestige of Revolution LE for all to see.



# SOMETIMES, WHAT'S ON THE OUTSIDE REALLY DOES COUNT.

Revolution LE's exterior boasts more than good looks. You'll enjoy dozens of features that are helpful, comfortable, or just plain cool. Here are a few.

- ① DUAL PANE WINDOWS offer insulation from the summer heat and reduce noise inside the coach. They also work in tandem with the Revolution LE's Energy Management System to save energy.
- ② SIDE-HINGED LUGGAGE DOORS (select doors) open sideways and lock into place for added convenience and safety when loading up.



- ③ 8.0 KW DIESEL GENERATOR is powerful and extremely quiet so you won't be disturbed when docked.
- ④ THREE AIR CONDITIONERS are mounted on the roof to improve cooling and free up additional basement storage (Dual on 40E and 40R models).

Vehicle shown in Gold Starfire with Shock Wave exterior graphics.

- ① FIBERGLASS ROOF is one solid piece for leak-free living. Just as importantly, its dome shape and radius corners give a sleek architectural look.
- ② DUPONT® PAINT is carefully applied in two stages for maximum durability and lasting beauty. A final clear coat protects and beautifies the ultra-glossy exterior.
- ③ WINDOW AWNINGS protect your interior fabrics from fading, and keep the inside cooler.



- ④ IN-MOTION TRACVISION® SATELLITE SYSTEM (optional) tracks as you drive, so it delivers a continuous TV signal.
- ⑤ CHROME LOGOS gleam in the sunlight, proclaiming the prestige of Revolution LE for all to see.

Vehicle shown in Gold Starfire with Shock Wave exterior graphics.



## WHILE TECHNOLOGY MARCHES ON, OURS CLIPS DOWN THE ROAD.

The technology engineered into Revolution LE is the most advanced, so it matches the rest of the package. We've found innovative ways to help you drive safer, see more clearly, and even enjoy yourself a little more. That's better living through technology.



CHROME SIDE MIRRORS are heated to remove dew or frost to give you a better view. The "bus style" design increases your safety, thanks to turn signal indicators to notify other drivers that you're changing lanes.



THE SIDE VIEW CAMERAS (optional), mounted on the left and right sidewalls, transmit to the driver's area monitor. The cameras are activated by the turn signal to help you see blind spots in adjacent lanes, but they can also be manually controlled by the driver. Once you're docked, they're a handy security tool to help you see what's going on outside the coach.



THE EXTERIOR ENTERTAINMENT CENTER (optional) lets you enjoy entertainment under the stars. Featuring an AM/FM radio with built-in CD player and a Samsung® 32" LCD HDTV, this all-in-one solution is a breath of fresh air.



THE FRONT CAP has been newly redesigned, with a contemporary edge. The curvy windshield is Revolution LE's stylish calling card, with a one-piece design to enhance your panoramic view. Diamond Shield (optional) is a transparent, 8 mil. urethane film designed to preserve your coach's beauty for years to come. It protects your paint finish on the lower front cap from chipping and wards off damage from road debris, bug tar and harsh weather.



THE REAR CAP features high-mounted taillights for better visibility and a sophisticated look. A two-piece ladder easily stows away when not in use.



## WHILE TECHNOLOGY MARCHES ON, OURS CLIPS DOWN THE ROAD.

The technology engineered into Revolution LE is the most advanced, so it matches the rest of the package. We've found innovative ways to help you drive safer, see more clearly, and even enjoy yourself a little more. That's better living through technology.



CHROME SIDE MIRRORS are heated to remove dew or frost to give you a better view. The "bus style" design increases your safety, thanks to turn signal indicators to notify other drivers that you're changing lanes.



THE SIDE VIEW CAMERAS (optional), mounted on the left and right sidewalls, transmit to the driver's area monitor. The cameras are activated by the turn signal to help you see blind spots in adjacent lanes, but they can also be manually controlled by the driver. Once you're docked, they're a handy security tool to help you see what's going on outside the coach.



THE EXTERIOR ENTERTAINMENT CENTER (optional) lets you enjoy entertainment under the stars. Featuring an AM/FM radio with built-in CD player and a Samsung® 32" LCD HDTV, this all-in-one solution is a breath of fresh air.



THE FRONT CAP has been newly redesigned, with a contemporary edge. The curvy windshield is Revolution LE's stylish calling card, with a one-piece design to enhance your panoramic view. Diamond Shield (optional) is a transparent, 8 mil. urethane film designed to preserve your coach's beauty for years to come. It protects your paint finish on the lower front cap from chipping and wards off damage from road debris, bug tar and harsh weather.



THE REAR CAP features high-mounted taillights for better visibility and a sophisticated look. A two-piece ladder easily stows away when not in use.



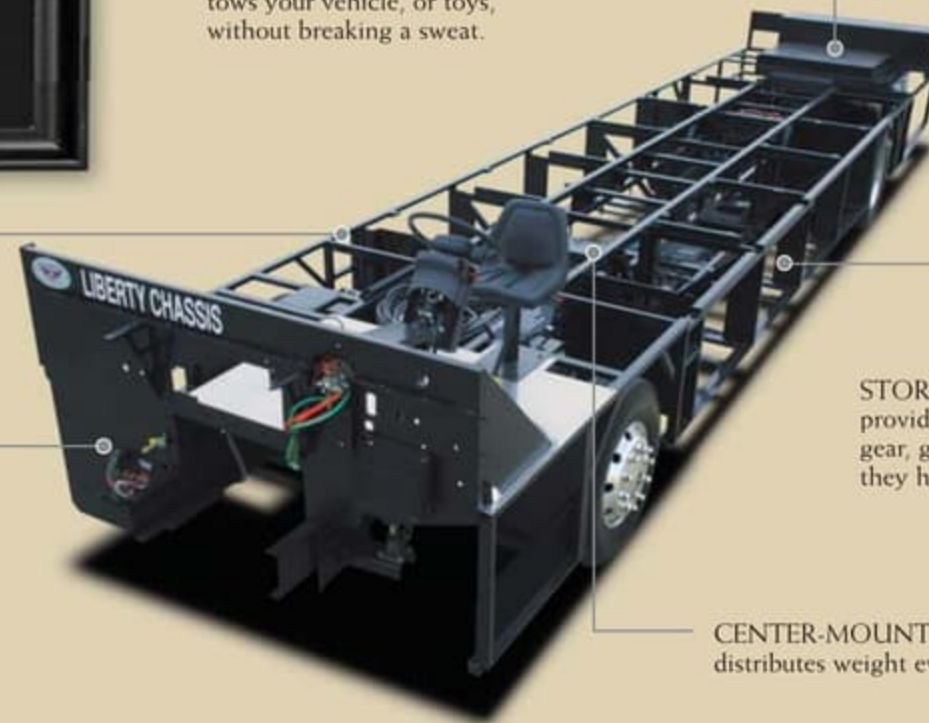
# FREEDOM YOU CAN FEEL.

Our exclusive Liberty Chassis makes the Revolution LE arguably one of the best riding diesel coaches on the market. In fact, we placed a nickel on one of the frame rails while the engine was running – and the nickel did not move. That's how little vibration was created. The secret is the strong, rigid frame that strengthens the integrity of the driving platform to create an extremely smooth driving experience.

A 15,000 POUND TOWING CAPACITY†  
tows your vehicle, or toys,  
without breaking a sweat.

ELECTRO-COATING over the steel protects against corrosion.

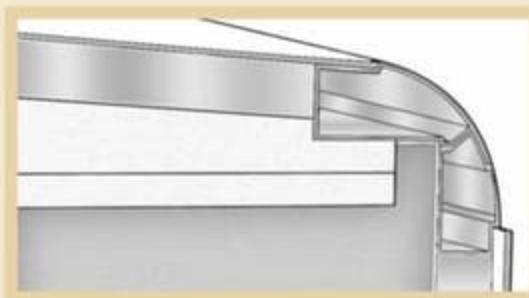
ALL-STEEL STRUCTURE creates a strong and rigid frame that resists flexing. This is the foundation for a superior chassis that can overcome the structural challenges of floor plans with triple and quad slide-outs.



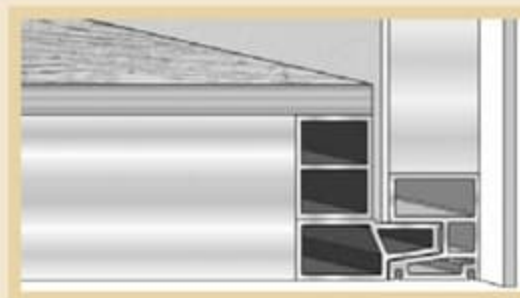
STORAGE COMPARTMENTS provide durable storage space for gear, golf clubs, or coolers, and they hose out for easy cleaning.

CENTER-MOUNTED FUEL TANK distributes weight evenly for improved handling.

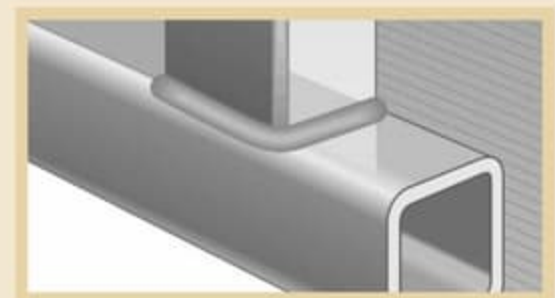
† The chassis manufacturer recommends the installation of a supplemental brake control system to activate the brakes on the vehicle or trailer you are towing. Hitch receiver ratings expressed are maximum for the hitch receiver installed and may require the purchase of additional equipment that is dependent on the weight of the towed load. Consult with hitch receiver manufacturer for further information.



INTERLOCKING CEILING-TO-SIDEWALL CONSTRUCTION helps keep the box square. This assures a proper cabinet fit.



INTERLOCKING FLOOR-TO-SIDEWALL CONSTRUCTION locks tightly to keep out water, dust and noise, and helps eliminate squeaks and rattles.



VACU-BOND® SIDEWALL CONSTRUCTION creates a strong, weather-resistant structure. The sidewalls, floor and ceiling are Vacu-bonded to a durable metal frame, far superior to the pinch roll method our competitors often use.



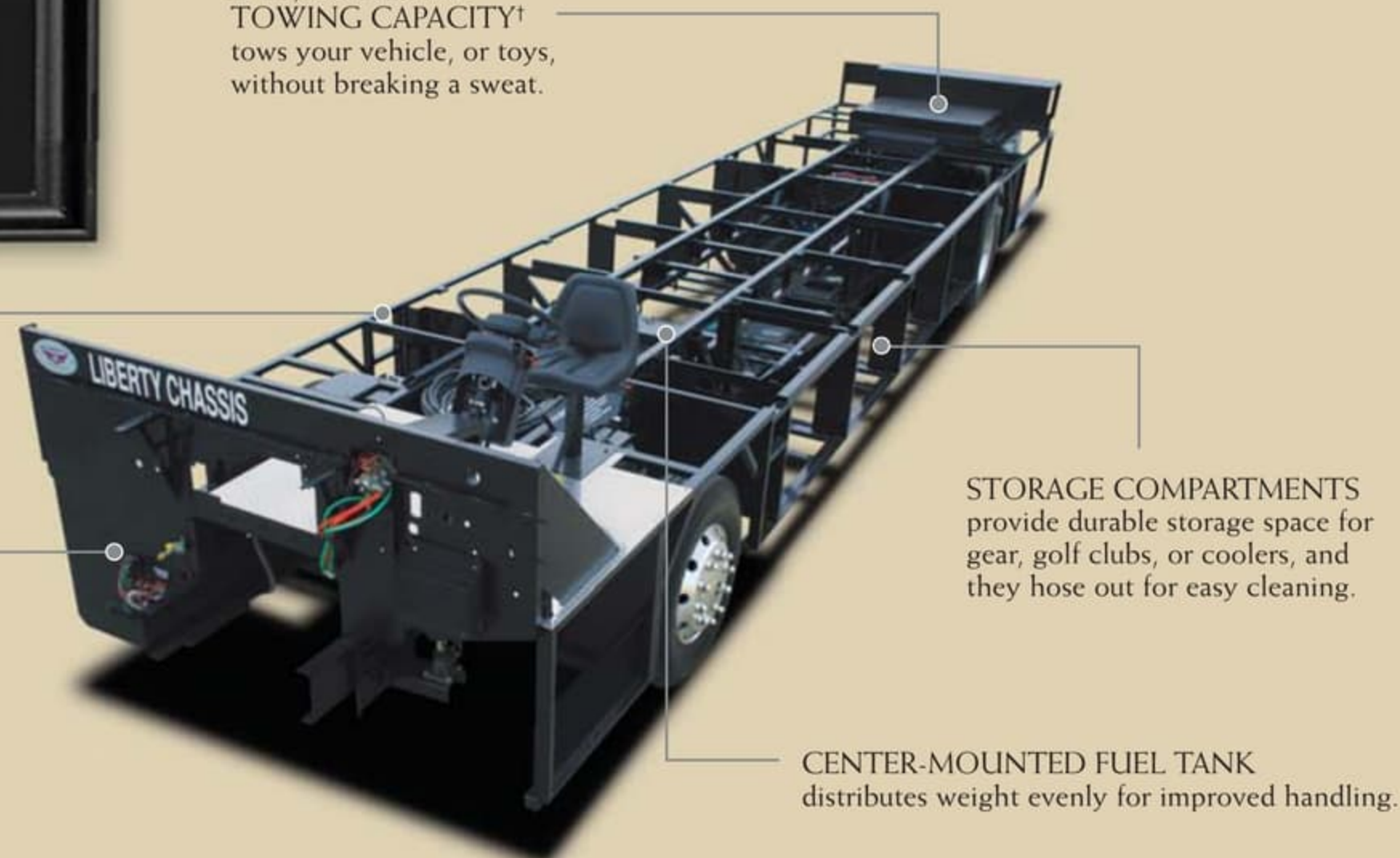
# FREEDOM YOU CAN FEEL.

Our exclusive Liberty Chassis makes the Revolution LE arguably one of the best riding diesel coaches on the market. In fact, we placed a nickel on one of the frame rails while the engine was running – and the nickel did not move. That's how little vibration was created. The secret is the strong, rigid frame that strengthens the integrity of the driving platform to create an extremely smooth driving experience.

A 15,000 POUND TOWING CAPACITY†  
tows your vehicle, or toys,  
without breaking a sweat.

ELECTRO-COATING over the steel protects against corrosion.

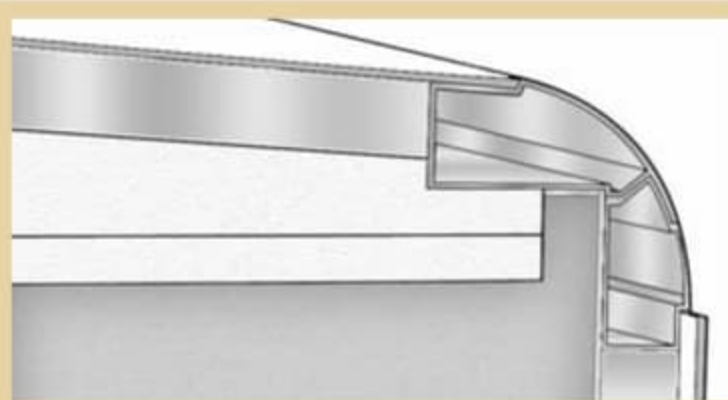
ALL-STEEL STRUCTURE creates a strong and rigid frame that resists flexing. This is the foundation for a superior chassis that can overcome the structural challenges of floor plans with triple and quad slide-outs.



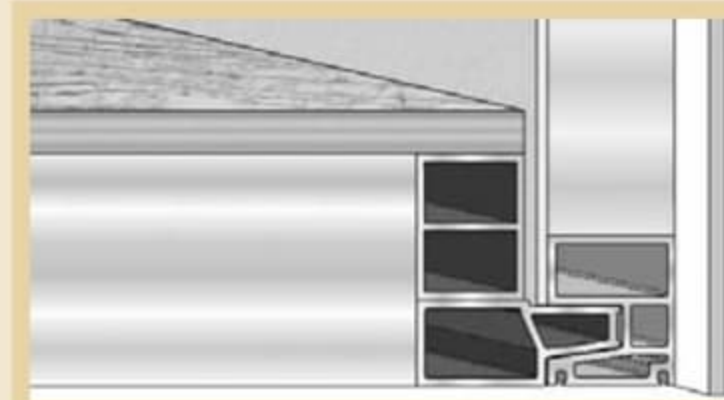
STORAGE COMPARTMENTS provide durable storage space for gear, golf clubs, or coolers, and they hose out for easy cleaning.

CENTER-MOUNTED FUEL TANK distributes weight evenly for improved handling.

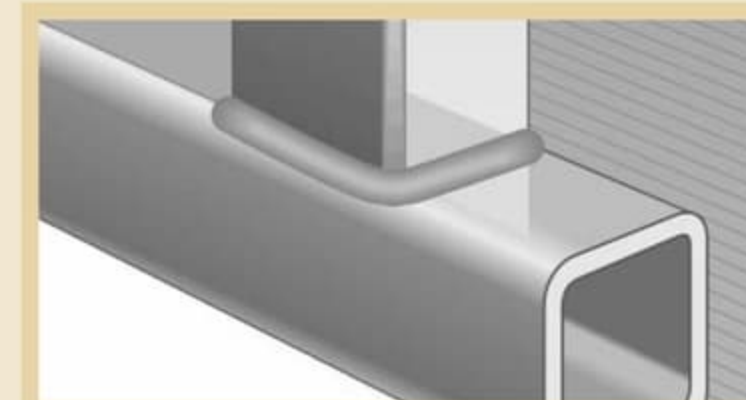
† The chassis manufacturer recommends the installation of a supplemental brake control system to activate the brakes on the vehicle or trailer you are towing. Hitch receiver ratings expressed are maximum for the hitch receiver installed and may require the purchase of additional equipment that is dependent on the weight of the towed load. Consult with hitch receiver manufacturer for further information.



INTERLOCKING CEILING-TO-SIDEWALL CONSTRUCTION helps keep the box square. This assures a proper cabinet fit.



INTERLOCKING FLOOR-TO-SIDEWALL CONSTRUCTION locks tightly to keep out water, dust and noise, and helps eliminate squeaks and rattles.



VACU-BOND® SIDEWALL CONSTRUCTION creates a strong, weather-resistant structure. The sidewalls, floor and ceiling are Vacu-bonded to a durable metal frame, far superior to the pinch roll method our competitors often use.





THE PASS-THROUGH STORAGE COMPARTMENTS allow you to grab your gear from either side of the coach. Optional slide-out trays provide easy access to items in the back of the compartment. These compartments are insulated and vacu-bonded to ensure your stored items are kept safe.

THE UTILITY COMPARTMENT allows you to empty your tanks and wash your hands afterwards with the soap and paper towel dispenser. The pull-out sprayer is handy for keeping everything neat and clean.



THE SERVICE CENTER is a central location for all your important coach systems. You can check and maintain fuel filters, air dryer, injector primer pump, water fuel separator and your leveling system simply and efficiently.



## PEACE OF MIND. THE VERY BEST BENEFIT OF A REVOLUTION LE.

While our engineers delight in creating innovative floor plans and storage solutions, we're proudest of our commitment to safety. We've integrated dozens of safety features into Revolution LE to protect you and your precious cargo. From bus-style turn signals to ABS brakes to integrated safety belts, we've got you covered. You can depend on us for superior construction and safety that goes the distance... no matter how far your journey.

### Safety



You've got precious cargo. So we've engineered dozens of innovative safety features into our motor homes to give you more peace of mind.



REVOLUTION





THE PASS-THROUGH STORAGE COMPARTMENTS allow you to grab your gear from either side of the coach. Optional slide-out trays provide easy access to items in the back of the compartment. These compartments are insulated and vacu-bonded to ensure your stored items are kept safe.

THE UTILITY COMPARTMENT allows you to empty your tanks and wash your hands afterwards with the soap and paper towel dispenser. The pull-out sprayer is handy for keeping everything neat and clean.



THE SERVICE CENTER is a central location for all your important coach systems. You can check and maintain fuel filters, air dryer, injector primer pump, water fuel separator and your leveling system simply and efficiently.



## PEACE OF MIND. THE VERY BEST BENEFIT OF A REVOLUTION LE.

While our engineers delight in creating innovative floor plans and storage solutions, we're proudest of our commitment to safety. We've integrated dozens of safety features into Revolution LE to protect you and your precious cargo. From bus-style turn signals to ABS brakes to integrated safety belts, we've got you covered. You can depend on us for superior construction and safety that goes the distance... no matter how far your journey.

### Safety



You've got precious cargo. So we've engineered dozens of innovative safety features into our motor homes to give you more peace of mind.



REVOLUTION



## REVOLUTION FLOOR PLANS

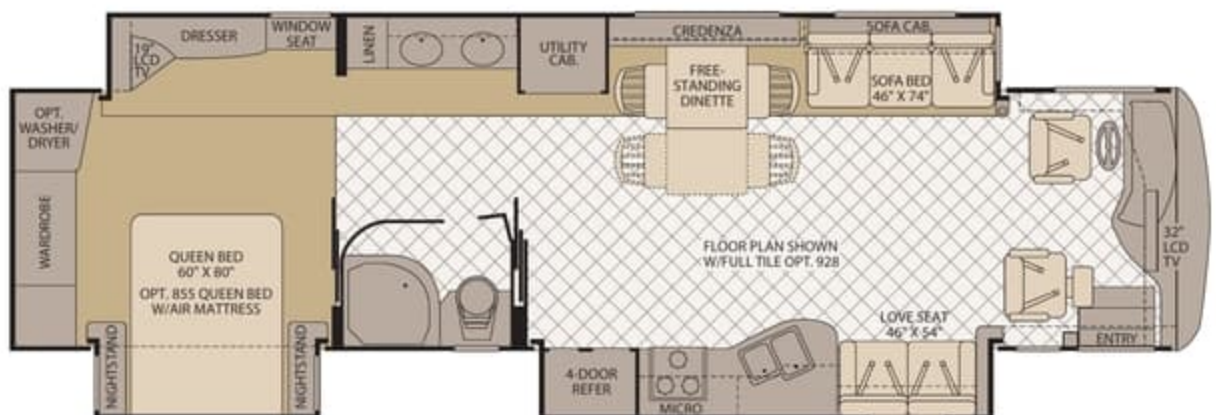
40E



Interior Storage Capacity: 147 cu. ft.  
Exterior Storage Capacity: 212 cu. ft.

- Luxurious bedroom and private bathroom suite
- Opposing living room slide-outs for cavernous space
- Available Options: 107, 115, 126, 128, 131, 160, 200, 830, 832, 855

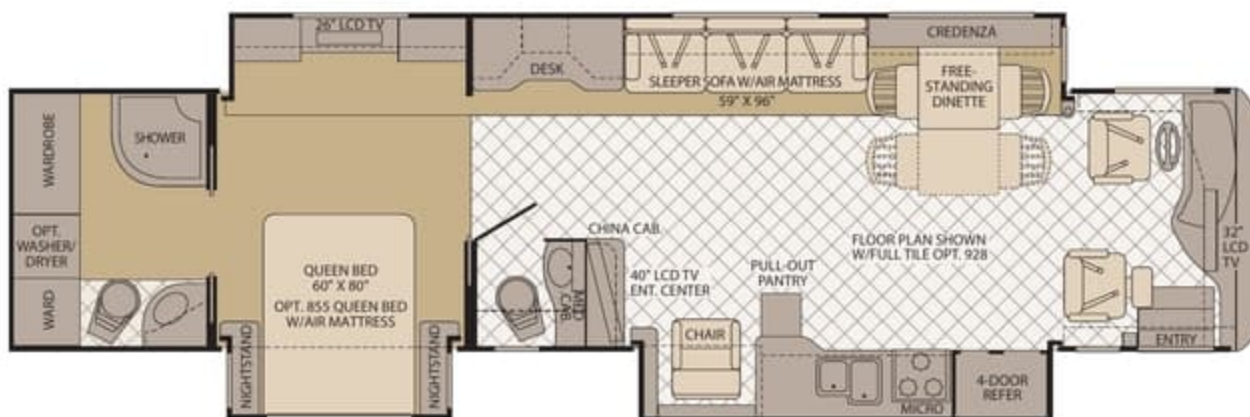
40R



Interior Storage Capacity: 165 cu. ft.  
Exterior Storage Capacity: 205 cu. ft.

- Industry leading full-wall slide plus two more slides
- Enormous galley with entertainment-friendly counter space
- Available Options: 107, 115, 126, 128, 131, 160, 200, 821, 830, 832, 855, 856

42K



Interior Storage Capacity: 175 cu. ft.  
Exterior Storage Capacity: 212 cu. ft.

- Coveted tag-axle provides maximum driving comfort
- Industry leading mid-coach home theater floor plan
- Available Options: 107, 115, 126, 128, 131, 830, 832, 855, 856, 878



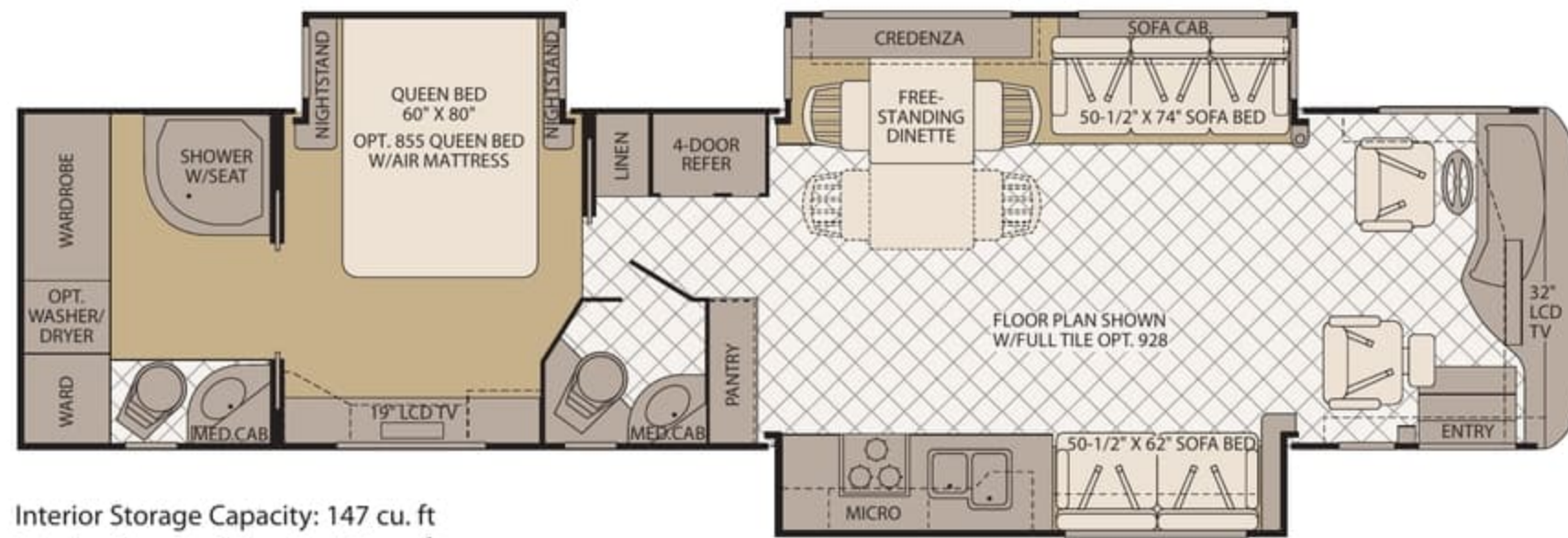
REVOLUTION

Seatbelt configuration may vary depending on options chosen.



# REVOLUTION FLOOR PLANS

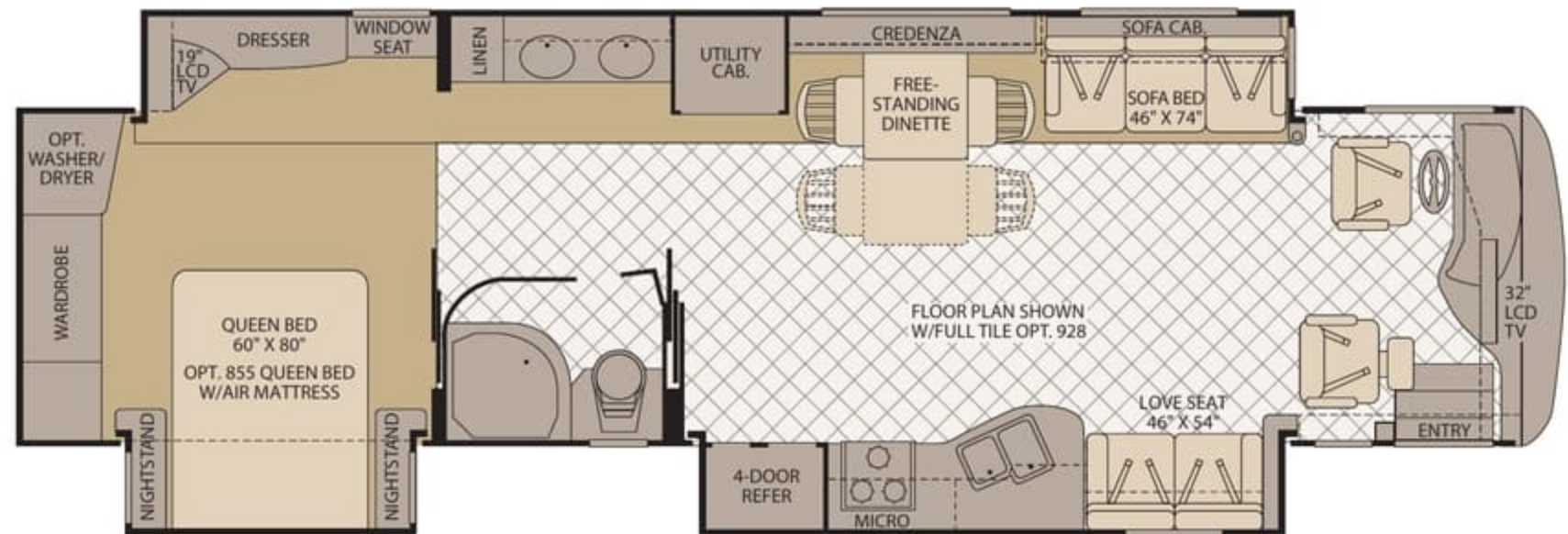
40E



Interior Storage Capacity: 147 cu. ft.  
Exterior Storage Capacity: 212 cu. ft.

- Luxurious bedroom and private bathroom suite
- Opposing living room slide-outs for cavernous space
- Available Options: 107, 115, 126, 128, 131, 160, 200, 830, 832, 855

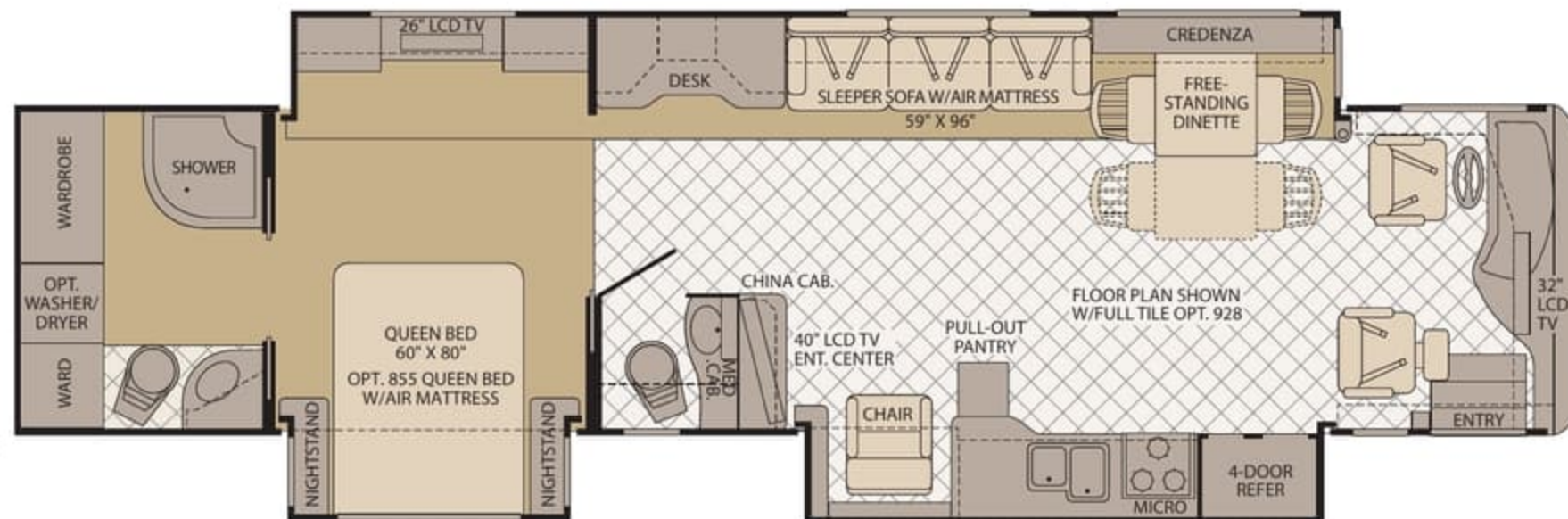
40R



Interior Storage Capacity: 165 cu. ft.  
Exterior Storage Capacity: 205 cu. ft.

- Industry leading full-wall slide plus two more slides
- Enormous galley with entertainment-friendly counter space
- Available Options: 107, 115, 126, 128, 131, 160, 200, 821, 830, 832, 855, 856

42K



Interior Storage Capacity: 175 cu. ft.  
Exterior Storage Capacity: 212 cu. ft.

- Coveted tag-axle provides maximum driving comfort
- Industry leading mid-coach home theater floor plan
- Available Options: 107, 115, 126, 128, 131, 830, 832, 855, 856, 878



REVOLUTION

Seatbelt configuration may vary depending on options chosen.



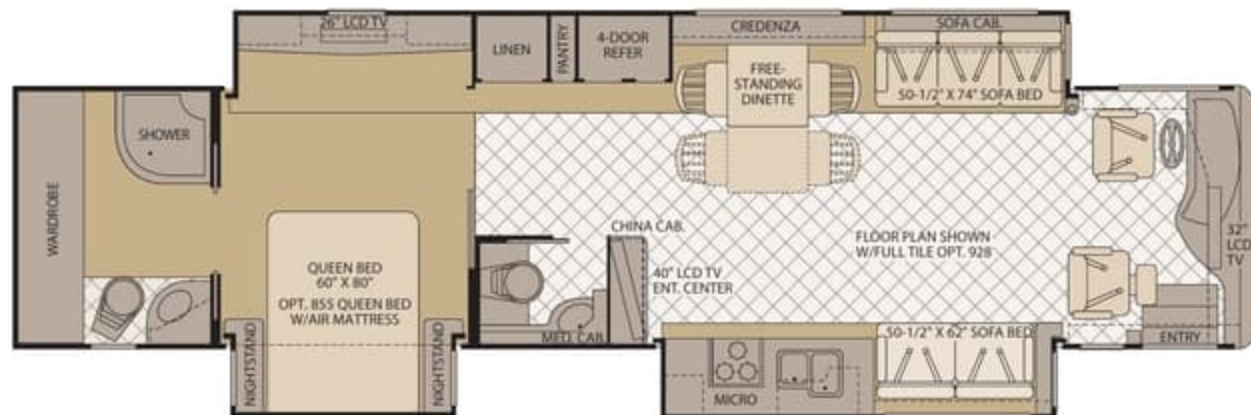
42N



Interior Storage Capacity: 209 cu. ft.  
Exterior Storage Capacity: 212 cu. ft.

- Coveted tag-axe provides maximum driving comfort
- Quadruple slide-outs for luxurious room to room
- Available Options: 107, 115, 126, 128, 160, 200, 830, 832, 855, 856, 879

42W



Interior Storage Capacity: 175 cu. ft.  
Exterior Storage Capacity: 212 cu. ft.

- Full-wall slide with bath and a half flexibility
- Industry leading mid-coach home theater floor plan
- Available Options: 107, 115, 126, 128, 131, 200, 830, 832, 855, 856

## Service



Help is nearby. When you need an upgrade or repair, you'll find Fleetwood dealers all across North America ready to assist you.

## OPTIONS



OPT. 107  
DISHWASHER



OPT. 115  
THREE BURNER  
RANGE & 22" OVEN



OPT. 126  
WASHER/  
DRYER  
OPT. 131  
STACKABLE  
WASHER/  
DRYER



OPT. 128  
DOMETIC 14 CU. FT.  
SIDE BY SIDE STAINLESS  
STEEL REFER



OPT. 160  
26" LCD TV  
(IN BEDROOM)



OPT. 200 SOFA SLEEPER  
W/AIR MATTRESS



OPT. 821  
RECLINER W/TABLE



OPT. 830 FACING DINETTE



OPT. 832 FREE-STANDING  
DINETTE W/REMOVABLE  
LEAF



OPT. 855  
QUEEN BED W/AIR MATTRESS



OPT. 856  
KING BED W/AIR MATTRESS



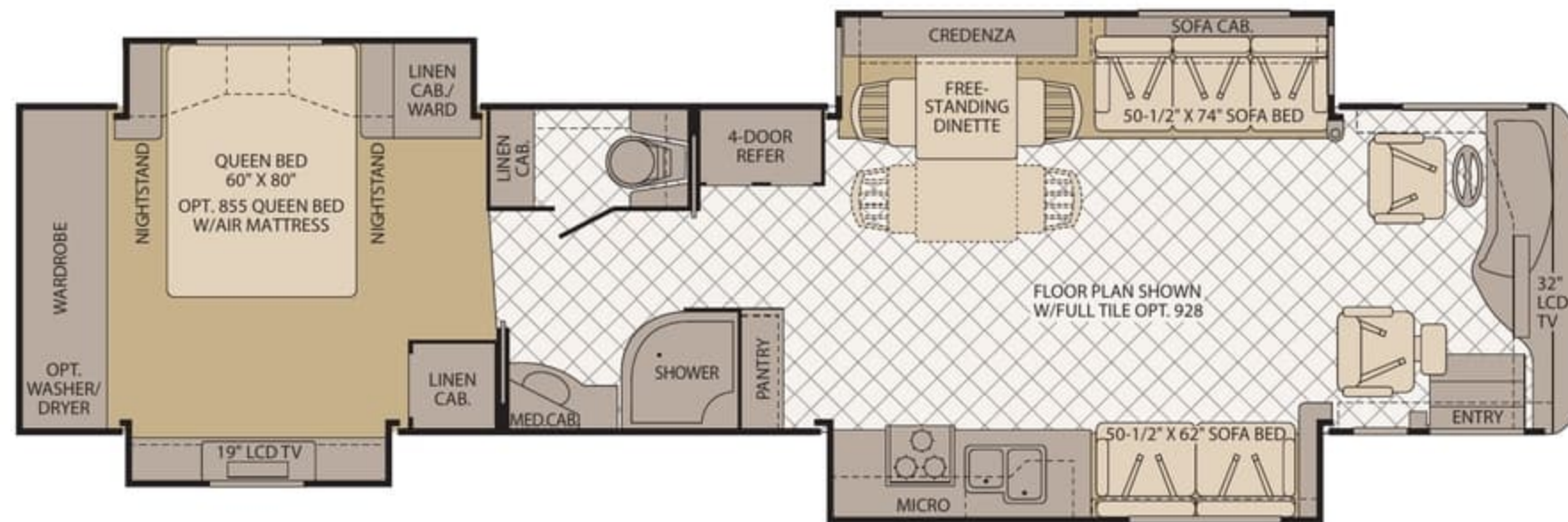
OPT. 878  
DESK W/CHAIR



OPT. 879  
BEDROOM LAVY



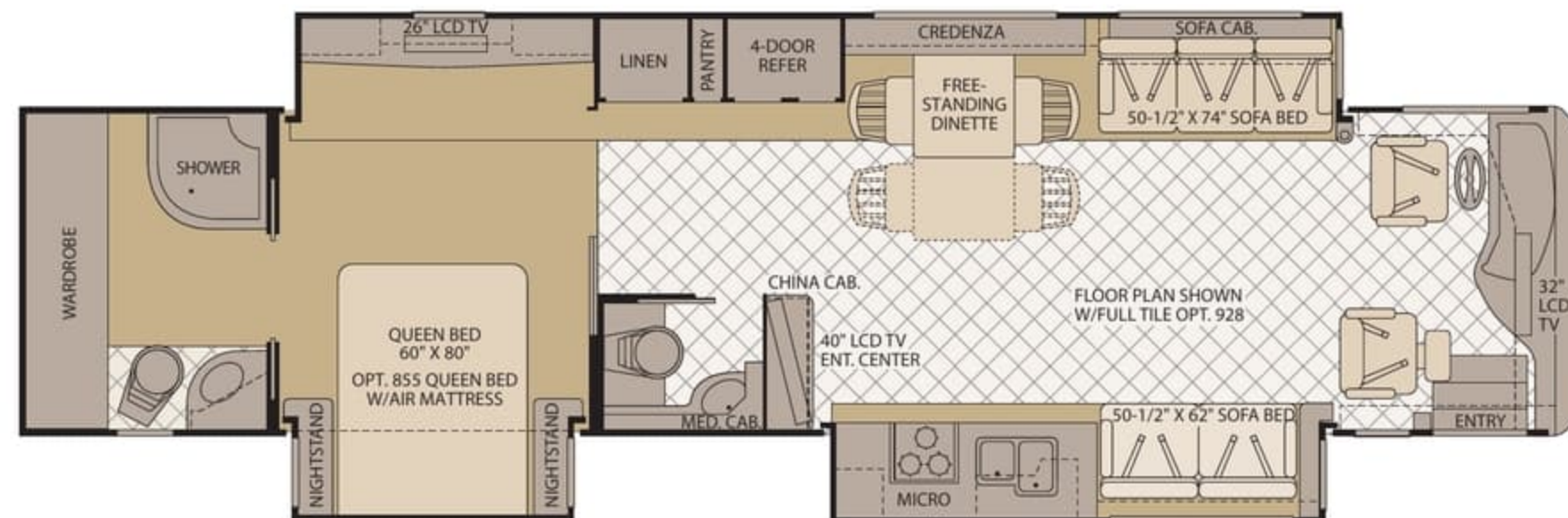
42N



Interior Storage Capacity: 209 cu. ft  
Exterior Storage Capacity: 212 cu. ft.

- Coveted tag-axe provides maximum driving comfort
- Quadruple slide-outs for luxurious room to room
- Available Options: 107, 115, 126, 128, 160, 200, 830, 832, 855, 856, 879

42W



Interior Storage Capacity: 175 cu. ft  
Exterior Storage Capacity: 212 cu. ft.

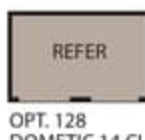
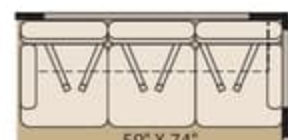
- Full-wall slide with bath and a half flexibility
- Industry leading mid-coach home theater floor plan
- Available Options: 107, 115, 126, 128, 131, 200, 830, 832, 855, 856

## Service



Help is nearby. When you need an upgrade or repair, you'll find Fleetwood dealers all across North America ready to assist you.

## OPTIONS

OPT. 107  
DISHWASHEROPT. 115  
THREE BURNER  
RANGE & 22" OVENOPT. 126  
WASHER/  
DRYER  
OPT. 131  
STACKABLE  
WASHER/  
DRYEROPT. 128  
DOMETIC 14 CU. FT.  
SIDE BY SIDE STAINLESS  
STEEL REFEROPT. 160  
26" LCD TV  
(IN BEDROOM)OPT. 200 SOFA SLEEPER  
W/AIR MATTRESSOPT. 821  
RECLINER W/TABLE

OPT. 830 FACING DINETTE

OPT. 832 FREE-STANDING  
DINETTE W/REMOVABLE LEAFOPT. 855  
QUEEN BED W/AIR MATTRESSOPT. 856  
KING BED W/AIR MATTRESSOPT. 878  
DESK W/CHAIROPT. 879  
BEDROOM LAVY



## STANDARD FEATURES

### INTERIOR

#### Throughout

- 25,000/34,000 Btu Dual Furnaces
- 84" Interior Ceiling Height
- Choice of Regency Cherry, Natural Cherry or Rich Mahogany Wood Finish
- Complete TuffPEX Plumbing System
- Day/Night Pleated Shades
- Deluxe Roller Bearing, Full Extension Drawer Guides & Transit-Ship Locks
- Denso Climate Control System
- Direct Spark Ignition 10 Gallon Water Heater 120V/Propane
- Dual Roof Mounted A/C High Efficiency w/Front Solar Panel (3 on 42K, 42N & 42W)
- Fabrica® Carpeting
- Hardwood Cabinet Doors/Drawers
- Padded Vinyl Ceiling
- Power Vent w/Rain Sensors (All Vents, Galley, Bath & Shower Area)
- Raised Panel Upper Cabinet Doors
- Solid Wood Drawers
- Centralized Control Panel Display Center at Entry
- Tank Level Monitor (Interior Only)
- Tile Floor at Front Entry
- Whole Coach Water Filtration System
- Wood Finish Return Air Intake for Furnace

#### Driver Convenience

- (2) Auxiliary 12V Dash Receptacles
- Power Driver/Front Passenger Sun Visors
- Adjustable Brake & Throttle Pedals
- Auxiliary Fog Lights
- Auxiliary Driving Lights
- Auxiliary Start Switch
- Battery Disconnect System
- CB Radio Ready
- Driver Side Manual Pull Down Shade
- Driver/Front Passenger Map Lights
- Flexsteel® Ultraleather™ Driver Seat w/Manual Lumbar/6 Way Power/Heat/Adjustable Armrest (Integrated Lap and Shoulder Belts)
- Wider Flexsteel® Ultraleather™ Passenger Seat w/6 Way Power/Electric Footrest (Integrated Lap and Shoulder Belts)
- I.C.C. Light Switch
- Electric Step Well Cover w/Lighted Step Well Area
- Rear Vision System w/One-Way Audio (Camera & Monitor)
- Soft Touch Smart Wheel
- Tilt & Telescoping Steering Wheel w/Adjustable Dash Gauge Package
- AM/FM/CD Pioneer® Radio w/Color Back Up Monitor and Touch Screen GPS

#### Galley

- Base Cabinet Storage for the Range & Galley Sink Covers
- Ceramic Tile Backsplash
- Ceramic Tile Flooring w/Accent (Laid Diagonally)
- GE® Convection Microwave Oven w/Built-in Range Hood

- Hardwood Dinette Table, 2 Free-Standing Chairs & 2 Folding Chairs
- High Rise Galley Faucet w/Pull-Out Sprayer
- Large 70/30 Split Solid Surface Sink
- Norcold® 12 cu.ft. 4 Door Stainless Steel Refrigerator w/Ice Maker and Water Dispenser
- Recessed 3 Sealed Burners Cook Top (Stainless Steel)
- Satin Polished Solid Surface Galley Counter Top
- Satin Polished Solid Surface Range & Sink Covers
- Coffered Ceilings w/Halogen Lighting on Dimmer Switch

#### Living Room

- Samsung® 32" LCD HDTV in Front Overhead
- Flexsteel® Ultraleather™ Love Seat
- Flexsteel® Ultraleather™ Sofa Bed
- Samsung® Home Theater System w/DVD Player and 5.1 Dolby® Surround Sound Speakers
- TracVision® Domed Digital Satellite System
- Coffered Ceilings w/Halogen Lighting on Dimmer Switch

#### Bedroom

- Samsung® 19" LCD HDTV (26" in 42K & 42W)
- Samsung® DVD Player
- 60" X 80" Queen Bed Mattress
- Cedar Lined Wardrobe
- Day/Night Pleated Shades
- DSS 2nd Receiver Ready Bedroom Area (Coax Cable)
- Satin Polished Solid Surface Nightstand and Base Cabinet Counter Tops
- Coffered Ceilings w/Halogen Lighting on Dimmer Switch

#### Bathroom

- Ceramic Tile Flooring
- Deluxe Medicine Cabinet
- Moen® Hand Held Shower Head
- Residential China Bowl Flush Toilet w/Hand Sprayer (Select Models)
- Satin Polished Solid Surface Lavvy Top w/Porcelain Bowl & Moen® Faucet
- Shower Door w/Obscure Glass
- Skylight in Shower
- Vacuum Flushed Toilet (Select Models)

#### Safety/Convenience

- Multiple Seatbelt Locations
- Carbon Monoxide Detector/Alarm
- Centralized Control Panel Display Center
- Energy Management System (EMS) w/Soft Start
- Fire Extinguisher
- Propane Detector/Alarm
- Smoke Detector/Alarm

### EXTERIOR

#### Throughout

- (4) Aluminum Wheels
- (4) Mud Flaps
- 2000 Watt Pure Sine Wave Inverter w/Remote
- 50 Amp Service
- Battery Monitor
- "Bus Style" Large One-Piece Windshield

- Chrome "Bus Style" Heated Mirrors w/Remote Adjustment & Turn Signal Indicators
- Domed One-Piece Fiberglass Roof w/Radius Corners
- Dual Holding Tank San-T-Flush™ System
- Dual Pane Windows w/Screens
- Electric Patio Awning
- Electronic Battery Control Center
- Energy Management System (50 Amp)
- Exterior Convenience Light at Dump Valves
- Fiberglass Front/Rear Caps w/High Mounted Taillights
- Electric Front Entry Door Awning
- Large Windshield Washer Bottle w/Sprayer Nozzles
- Multi Point Water Pump Switching
- Onan® 8.0 KW Quiet Diesel Generator
- Sound Insulation Front & Rear
- Top Mounted Intermittent Wipers
- Utility Light Front & Rear
- Variable Speed Aquatec Water Pump
- Window Awnings (Bedroom & Front Roadside Windows)
- Sloped Roof on Slide out Boxes
- Surge Guard RV Power Protection

#### Automotive

- (2) 12V Chassis Batteries (1000 Cold Cranking Amps Each Battery)
- (4) 6 Volt House Maintenance Free AGM Batteries (Group 27)
- 15,000 lb Weight Distributing Hitch Receiver w/7 Pin Electrical Hook-up
- 160 Amp Alternator
- 4 Point Automatic Levelers
- Allison® 3000 MH, 6 Speed Automatic Transmission
- Anti-Lock Brake System (ABS)
- Full Air Brakes w/Automatic Slack Adjusters
- I-Beam Suspension w/Bilstein® Shocks
- Side Radiator Configuration
- Spartan® Modular Chassis w/400HP ISL Cummins® Engine

#### Body Structure

- Aluminum Interlocking Floor/Wall/Ceiling Framing
- Heated Water & Holding Tank Compartments
- Liberty Chassis w/Patent Pending (Fleetwood Exclusive)
- Steel Surface on Front Bulkhead/Engine Frame
- Vacu-bond® Insulated Storage Area
- Vacu-bond® Sidewall, Roof & Floor Construction

#### Safety/Convenience

- (4) Turn Signal Lamps on Each Side of Coach
- 30" Front Entry Door w/Dead Bolt
- Front & Rear Docking Lights
- Illuminated Entry Assist Handle
- Porch Lights (2)
- Power Entry Step
- Automotive Safety Glass
- Daytime Running Lights

#### Storage

- Exterior Side Hinged Storage Doors (on Select Doors)
- Lighted Luggage Compartments
- Pass-Through Compartments

## OPTIONS

### INTERIOR

- Full Tile Flooring
- Automatic Generator Start System
- Central Vacuum System w/Accessory Kit
- Vented Washer/Dryer Unit
- Stackable Washer/Dryer Unit (Select Models)
- Water Heater 16 Gallon Output
- Hydronic Heating - Aqua Hot (Select Models)

#### Driver Convenience

- Rear Vision System with Side Cameras
- Spotlight w/Remote

#### Living room

- Ultraleather™ Sofa Sleeper w/Air Mattress
- Euro Recliner (40R)
- Laptop Desk w/Recliner (42K)

#### Galley

- Dometic® Side-by-Side Stainless Steel Refrigerator
- Facing Dinette
- Free-Standing Table & Chairs
- Recessed 3 Sealed Burner, Stainless Steel Range w/Oven & Solid Surface Covers
- Fisher & Paykel DishDrawer®

#### Bedroom

- Bedroom Ceiling Fan (Select Models)
- Dual Control Queen Air Mattress
- Dual Control King Air Mattress (Select Models)
- Second Sink (42N)
- Samsung® 26" LCD HDTV

### EXTERIOR

- (12) Exterior Graphics Packages (Electric Awning Included in Graphic Package)
- A Tray Package (2) 90"
- B Tray Package (2) 54", (2) 36"
- C Tray Package (1) 90", (1) 54", (1) 36"
- D Tray Package (1) 54", (1) 36"
- Dual Roof Mounted A/C High Efficiency w/Heat Pump and Front Solar Panel
- Exterior Entertainment Center (Samsung® 32" LCD HDTV)
- In-Motion TracVision® Domed Digital Satellite System
- Rear Rock Guard w/Logo
- Electric Power Cord Reel (Standard on 42N, 42K & 42W)
- SaniCon Waste Pump
- Diamond Shield Clear Front Protective Mask

## FLEETWOOD ADVANTAGES

- Best in Class Ride Quality, Thanks to the Liberty Chassis
- Best in Class Exterior Styling and Graphics
- Best in Class Interior Décor and Woods
- Best in Class Floor Plans Including Full-Wall Slides and Rear Bath and a Half



## STANDARD FEATURES

### INTERIOR

#### Throughout

- 25,000/34,000 Btu Dual Furnaces
- 84" Interior Ceiling Height
- Choice of Regency Cherry, Natural Cherry or Rich Mahogany Wood Finish
- Complete TuffPEX Plumbing System
- Day/Night Pleated Shades
- Deluxe Roller Bearing, Full Extension Drawer Guides & Transit-Ship Locks
- Denso Climate Control System
- Direct Spark Ignition 10 Gallon Water Heater 120V/Propane
- Dual Roof Mounted A/C High Efficiency w/Front Solar Panel (3 on 42K, 42N & 42W)
- Fabrica® Carpeting
- Hardwood Cabinet Doors/Drawers
- Padded Vinyl Ceiling
- Power Vent w/Rain Sensors (All Vents, Galley, Bath & Shower Area)
- Raised Panel Upper Cabinet Doors
- Solid Wood Drawers
- Centralized Control Panel Display Center at Entry
- Tank Level Monitor (Interior Only)
- Tile Floor at Front Entry
- Whole Coach Water Filtration System
- Wood Finish Return Air Intake for Furnace

#### Driver Convenience

- (2) Auxiliary 12V Dash Receptacles
- Power Driver/Front Passenger Sun Visors
- Adjustable Brake & Throttle Pedals
- Auxiliary Fog Lights
- Auxiliary Driving Lights
- Auxiliary Start Switch
- Battery Disconnect System
- CB Radio Ready
- Driver Side Manual Pull Down Shade
- Driver/Front Passenger Map Lights
- Flexsteel® Ultraleather™ Driver Seat w/Manual Lumbar/6 Way Power/Heat/Adjustable Armrest (Integrated Lap and Shoulder Belts)
- Wider Flexsteel® Ultraleather™ Passenger Seat w/6 Way Power/Electric Footrest (Integrated Lap and Shoulder Belts)
- I.C.C. Light Switch
- Electric Step Well Cover w/Lighted Step Well Area
- Rear Vision System w/One-Way Audio (Camera & Monitor)
- Soft Touch Smart Wheel
- Tilt & Telescoping Steering Wheel w/Adjustable Dash Gauge Package
- AM/FM/CD Pioneer® Radio w/Color Back Up Monitor and Touch Screen GPS

#### Galley

- Base Cabinet Storage for the Range & Galley Sink Covers
- Ceramic Tile Backsplash
- Ceramic Tile Flooring w/Accent (Laid Diagonally)
- GE® Convection Microwave Oven w/Built-in Range Hood

- Hardwood Dinette Table, 2 Free-Standing Chairs & 2 Folding Chairs
- High Rise Galley Faucet w/Pull-Out Sprayer
- Large 70/30 Split Solid Surface Sink
- Norcold® 12 cu.ft. 4 Door Stainless Steel Refrigerator w/Ice Maker and Water Dispenser
- Recessed 3 Sealed Burners Cook Top (Stainless Steel)
- Satin Polished Solid Surface Galley Counter Top
- Satin Polished Solid Surface Range & Sink Covers
- Coffered Ceilings w/Halogen Lighting on Dimmer Switch

#### Living Room

- Samsung® 32" LCD HDTV in Front Overhead
- Flexsteel® Ultraleather™ Love Seat
- Flexsteel® Ultraleather™ Sofa Bed
- Samsung® Home Theater System w/DVD Player and 5.1 Dolby® Surround Sound Speakers
- TracVision® Domed Digital Satellite System
- Coffered Ceilings w/Halogen Lighting on Dimmer Switch

#### Bedroom

- Samsung® 19" LCD HDTV (26" in 42K & 42W)
- Samsung® DVD Player
- 60" X 80" Queen Bed Mattress
- Cedar Lined Wardrobe
- Day/Night Pleated Shades
- DSS 2nd Receiver Ready Bedroom Area (Coax Cable)
- Satin Polished Solid Surface Nightstand and Base Cabinet Counter Tops
- Coffered Ceilings w/Halogen Lighting on Dimmer Switch

#### Bathroom

- Ceramic Tile Flooring
- Deluxe Medicine Cabinet
- Moen® Hand Held Shower Head
- Residential China Bowl Flush Toilet w/Hand Sprayer (Select Models)
- Satin Polished Solid Surface Lavy Top w/Porcelain Bowl & Moen® Faucet
- Shower Door w/Obscure Glass
- Skylight in Shower
- Vacuum Flushed Toilet (Select Models)

#### Safety/Convenience

- Multiple Seatbelt Locations
- Carbon Monoxide Detector/Alarm
- Centralized Control Panel Display Center
- Energy Management System (EMS) w/Soft Start
- Fire Extinguisher
- Propane Detector/Alarm
- Smoke Detector/Alarm

### EXTERIOR

#### Throughout

- (4) Aluminum Wheels
- (4) Mud Flaps
- 2000 Watt Pure Sine Wave Inverter w/Remote
- 50 Amp Service
- Battery Monitor
- "Bus Style" Large One-Piece Windshield

- Chrome "Bus Style" Heated Mirrors w/Remote Adjustment & Turn Signal Indicators
- Domed One-Piece Fiberglass Roof w/Radius Corners
- Dual Holding Tank San-T-Flush™ System
- Dual Pane Windows w/Screens
- Electric Patio Awning
- Electronic Battery Control Center
- Energy Management System (50 Amp)
- Exterior Convenience Light at Dump Valves
- Fiberglass Front/Rear Caps w/High Mounted Taillights
- Electric Front Entry Door Awning
- Large Windshield Washer Bottle w/Sprayer Nozzles
- Multi Point Water Pump Switching
- Onan® 8.0 KW Quiet Diesel Generator
- Sound Insulation Front & Rear
- Top Mounted Intermittent Wipers
- Utility Light Front & Rear
- Variable Speed Aquatec Water Pump
- Window Awnings (Bedroom & Front Roadside Windows)
- Sloped Roof on Slide out Boxes
- Surge Guard RV Power Protection

#### Automotive

- (2) 12V Chassis Batteries (1000 Cold Cranking Amps Each Battery)
- (4) 6 Volt House Maintenance Free AGM Batteries (Group 27)
- 15,000 lb Weight Distributing Hitch Receiver w/7 Pin Electrical Hook-up†
- 160 Amp Alternator
- 4 Point Automatic Levelers
- Allison® 3000 MH, 6 Speed Automatic Transmission
- Anti-Lock Brake System (ABS)
- Full Air Brakes w/Automatic Slack Adjusters
- I-Beam Suspension w/Bilstein® Shocks
- Side Radiator Configuration
- Spartan® Modular Chassis w/400HP ISL Cummins® Engine

#### Body Structure

- Aluminum Interlocking Floor/Wall/Ceiling Framing
- Heated Water & Holding Tank Compartments
- Liberty Chassis w/Patent Pending (Fleetwood Exclusive)
- Steel Surface on Front Bulkhead/Engine Frame
- Vacu-bond® Insulated Storage Area
- Vacu-bond® Sidewall, Roof & Floor Construction

#### Safety/Convenience

- (4) Turn Signal Lamps on Each Side of Coach
- 30" Front Entry Door w/Dead Bolt
- Front & Rear Docking Lights
- Illuminated Entry Assist Handle
- Porch Lights (2)
- Power Entry Step
- Automotive Safety Glass
- Daytime Running Lights

#### Storage

- Exterior Side Hinged Storage Doors (on Select Doors)
- Lighted Luggage Compartments
- Pass-Through Compartments

## OPTIONS

### INTERIOR

- Full Tile Flooring
- Automatic Generator Start System
- Central Vacuum System w/Accessory Kit
- Vented Washer/Dryer Unit
- Stackable Washer/Dryer Unit (Select Models)
- Water Heater 16 Gallon Output
- Hydronic Heating - Aqua Hot (Select Models)

#### Driver Convenience

- Rear Vision System with Side Cameras
- Spotlight w/Remote

#### Living room

- Ultraleather™ Sofa Sleeper w/Air Mattress
- Euro Recliner (40R)
- Laptop Desk w/Recliner (42K)

#### Galley

- Dometic® Side-by-Side Stainless Steel Refrigerator
- Facing Dinette
- Free-Standing Table & Chairs
- Recessed 3 Sealed Burner, Stainless Steel Range w/Oven & Solid Surface Covers
- Fisher & Paykel DishDrawer®

#### Bedroom

- Bedroom Ceiling Fan (Select Models)
- Dual Control Queen Air Mattress
- Dual Control King Air Mattress (Select Models)
- Second Sink (42N)
- Samsung® 26" LCD HDTV

### EXTERIOR

- (12) Exterior Graphics Packages (Electric Awning Included in Graphic Package)
- A Tray Package (2) 90"
- B Tray Package (2) 54", (2) 36"
- C Tray Package (1) 90", (1) 54", (1) 36"
- D Tray Package (1) 54", (1) 36"
- Dual Roof Mounted A/C High Efficiency w/Heat Pump and Front Solar Panel
- Exterior Entertainment Center (Samsung® 32" LCD HDTV)
- In-Motion TracVision® Domed Digital Satellite System
- Rear Rock Guard w/Logo
- Electric Power Cord Reel (Standard on 42N, 42K & 42W)
- SaniCon Waste Pump
- Diamond Shield Clear Front Protective Mask

## FLEETWOOD ADVANTAGES

- Best in Class Ride Quality, Thanks to the Liberty Chassis
- Best in Class Exterior Styling and Graphics
- Best in Class Interior Décor and Woods
- Best in Class Floor Plans Including Full-Wall Slides and Rear Bath and a Half



## WEIGHTS AND MEASUREMENTS

### SPARTAN® CHASSIS

MODELS	40E	40R	42K	42N	42W
Engine Displacement (Liters)	8.9	8.9	8.9	8.9	8.9
Wheelbase (Inches)	278"	278"	302"	302"	302"
GVWR (lbs) <sup>1</sup>	34,600	34,600	44,600	44,600	44,600
Front GAWR (lbs) <sup>2</sup>	14,600	14,600	14,600	14,600	14,600
Rear GAWR (lbs) <sup>2</sup>	20,000	20,000	20,000	20,000	20,000
Tag Axle (lbs) <sup>2</sup>	N/A	N/A	10,000	10,000	10,000
GCWR (lbs) <sup>3</sup>	49,600	49,600	59,600	59,600	59,600
Hitch Rating Weight (lbs) <sup>4</sup>	15,000	15,000	15,000	15,000	15,000
Tongue Weight (lbs) <sup>4</sup>	1,500	1,500	1,500	1,500	1,500
Fuel Capacity (gal)	125	125	125	125	125

### DIMENSIONS & CAPACITIES

MODELS	40E	40R	42K	42N	42W
Overall Length <sup>4</sup>	40' 11.5"	40' 11.5"	42' 11.5"	42' 11.5"	42' 11.5"
Overall Height (with A/C)	12' 10"	12' 10"	12' 10"	12' 10"	12' 10"
Overall Width (maximum) <sup>5,6</sup>	101"	101"	101"	101"	101"
Interior Height (maximum)	84"	84"	84"	84"	84"
Interior Width (maximum)	96"	96"	96"	96"	96"
Fresh Water Holding Tank (gal)	100	100	100	100	100
Grey Water Holding Tank (gal)	70	70	70	60	70
Black Water Holding Tank (gal)	40	40	40	40	40
Appliance Propane Tank (gal)(WC) <sup>7</sup>	30.6	30.6	30.6	30.6	30.6
Water Heater Tank (gal)	10	10	10	10	10

Liquid Weight Reference: Water (gal) = (8.3 lbs/3.8kgs) Fuel (gal) = 7.1 lbs/3.2 kgs) Propane (gal) = (4.2 lbs/1.9 kgs)

Metric Conversion: Multiply pounds x 0.453 to obtain kilograms. Multiply gallons x 3.785 to obtain liters. Multiply liters x 61 to obtain cubic inches.

- GVWR (Gross Vehicle Weight Rating) is the maximum permissible weight of this fully loaded motor home. The GVWR is equal to or greater than the sum of the (UVW) unloaded vehicle weight plus the (OCCC) occupant cargo carrying capacity\*.
- GAWR (Gross Axle Weight Rating) is the maximum permissible loaded weight a specific axle is designed to carry.
- GCWR (Gross Combined Weight Rating) is the value specified by the motor home manufacturer as the maximum allowable loaded weight of this motor home with its towed vehicle. Towing and braking capacities may be different. Refer to Fleetwood and chassis manufacturer's manuals for complete information.
- Length measured from front bumper to rear bumper (excludes accessories).
- Excludes safety equipment and awnings.
- Motor homes feature a body-width over 96" which will restrict your access to certain roads. Before purchasing, you should research any state and/or province road laws which may affect your usage.
- Tank manufacturer's listed water capacity (WC). Actual propane capacity is 80% of water listing as required by the safety code.

- The chassis manufacturer recommends the installation of a supplemental brake control system to activate the brakes on the vehicle or trailer you are towing. Hitch receiver ratings expressed are maximum for the hitch receiver installed and may require the purchase of additional equipment that is dependent on the weight of the towed load. Consult with hitch receiver manufacturer for further information.

N/A = not available at time of printing.

\* UVW and OCCC are found on the label containing the federal certification tag in each RV.

**IMPORTANT — PLEASE READ:** Product information, photography and illustrations included in this publication were as accurate as possible at the time of printing. For further product information and changes, please visit our website at [www.fleetwoodrv.com](http://www.fleetwoodrv.com) or contact your local Fleetwood dealer. Prices, materials, design and specifications are subject to change without notice. All weights, fuel, liquid capacities and dimensions are approximate. Fleetwood has designed its recreational vehicles to provide a variety of uses for its customers. Each vehicle features optimal seating, sleeping, storage and fluid capacities. The user is responsible for selecting the proper combination of loads (i.e. occupants, equipment, fluids, cargo, etc.) to ensure that the vehicle's capacities are not exceeded.

### CHASSIS

Model: Spartan®

Engine: 8.9 Liter Cummins® ISL 400HP

Torque: 1200 lbs-ft

Alternator: 160 Amp Leece Neville

Transmission: Allison® 3000 MH 6-Speed w/Electronic Shifter

Tires: Michelin® 295/80R 22.5H

### Warranty



Exclusive RV ownercare warranty.  
See your Fleetwood dealer for details.

**REVOLUTION LE**  
CLASS A DIESEL



## WEIGHTS AND MEASUREMENTS

### SPARTAN® CHASSIS

MODELS	40E	40R	42K	42N	42W
Engine Displacement (Liters)	8.9	8.9	8.9	8.9	8.9
Wheelbase (Inches)	278"	278"	302"	302"	302"
GVWR (lbs) <sup>1</sup>	34,600	34,600	44,600	44,600	44,600
Front GAWR (lbs) <sup>2</sup>	14,600	14,600	14,600	14,600	14,600
Rear GAWR (lbs) <sup>2</sup>	20,000	20,000	20,000	20,000	20,000
Tag Axle (lbs) <sup>2</sup>	N/A	N/A	10,000	10,000	10,000
GCWR (lbs) <sup>3</sup>	49,600	49,600	59,600	59,600	59,600
Hitch Rating Weight (lbs) <sup>4</sup>	15,000	15,000	15,000	15,000	15,000
Tongue Weight (lbs) <sup>1</sup>	1,500	1,500	1,500	1,500	1,500
Fuel Capacity (gal)	125	125	125	125	125

### DIMENSIONS & CAPACITIES

MODELS	40E	40R	42K	42N	42W
Overall Length <sup>4</sup>	40' 11.5"	40' 11.5"	42' 11.5"	42' 11.5"	42' 11.5"
Overall Height (with A/C)	12' 10"	12' 10"	12' 10"	12' 10"	12' 10"
Overall Width (maximum) <sup>5,6</sup>	101"	101"	101"	101"	101"
Interior Height (maximum)	84"	84"	84"	84"	84"
Interior Width (maximum)	96"	96"	96"	96"	96"
Fresh Water Holding Tank (gal)	100	100	100	100	100
Grey Water Holding Tank (gal)	70	70	70	60	70
Black Water Holding Tank (gal)	40	40	40	40	40
Appliance Propane Tank (gal)(WC) <sup>7</sup>	30.6	30.6	30.6	30.6	30.6
Water Heater Tank (gal)	10	10	10	10	10

Liquid Weight Reference: Water (gal) = (8.3 lbs/3.8kgs) Fuel (gal) = 7.1 lbs/3.2 kgs) Propane (gal) = (4.2 lbs/1.9 kgs)

Metric Conversion: Multiply pounds x 0.453 to obtain kilograms. Multiply gallons x 3.785 to obtain liters. Multiply liters x 61 to obtain cubic inches.

1. GVWR (Gross Vehicle Weight Rating) is the maximum permissible weight of this fully loaded motor home. The GVWR is equal to or greater than the sum of the (UVW) unloaded vehicle weight plus the (OCCC) occupant cargo carrying capacity\*.
2. GAWR (Gross Axle Weight Rating) is the maximum permissible loaded weight a specific axle is designed to carry.
3. GCWR (Gross Combined Weight Rating) is the value specified by the motor home manufacturer as the maximum allowable loaded weight of this motor home with its towed vehicle. Towing and braking capacities may be different. Refer to Fleetwood and chassis manufacturer's manuals for complete information.
4. Length measured from front bumper to rear bumper (excludes accessories).
5. Excludes safety equipment and awnings.
6. Motor homes feature a body-width over 96" which will restrict your access to certain roads. Before purchasing, you should research any state and/or province road laws which may affect your usage.
7. Tank manufacturer's listed water capacity (WC). Actual propane capacity is 80% of water listing as required by the safety code.

### CHASSIS

Model: Spartan®

Engine: 8.9 Liter Cummins® ISL 400HP

Torque: 1200 lbs-ft

Alternator: 160 Amp Leece Neville

Transmission: Allison® 3000 MH 6-Speed w/Electronic Shifter

Tires: Michelin® 295/80R 22.5H

### Warranty



Exclusive RV ownercare warranty.  
See your Fleetwood dealer for details.

**REVOLUTION LE**  
CLASS A DIESEL

† The chassis manufacturer recommends the installation of a supplemental brake control system to activate the brakes on the vehicle or trailer you are towing. Hitch receiver ratings expressed are maximum for the hitch receiver installed and may require the purchase of additional equipment that is dependent on the weight of the towed load. Consult with hitch receiver manufacturer for further information.

N/A = not available at time of printing.

\* UVW and OCCC are found on the label containing the federal certification tag in each RV.

IMPORTANT — PLEASE READ: Product information, photography and illustrations included in this publication were as accurate as possible at the time of printing. For further product information and changes, please visit our website at [www.fleetwoodrv.com](http://www.fleetwoodrv.com) or contact your local Fleetwood dealer. Prices, materials, design and specifications are subject to change without notice. All weights, fuel, liquid capacities and dimensions are approximate. Fleetwood has designed its recreational vehicles to provide a variety of uses for its customers. Each vehicle features optimal seating, sleeping, storage and fluid capacities. The user is responsible for selecting the proper combination of loads (i.e. occupants, equipment, fluids, cargo, etc.) to ensure that the vehicle's capacities are not exceeded.



# REVOLUTION LE

CLASS A DIESEL

## RV OWNERCARE\*

Limited one-year/15,000-mile coach warranty and three-year/50,000-mile structural warranty, whichever occurs first, and it is fully transferable for the first 12 months. RV OWNERCARE is one of the RV industry's most comprehensive programs and includes systems, appliances, components and construction, with no deductible and no service charge. RV OWNERCARE coverage is provided from a company that will be around in the future to service your needs. See your nearest Fleetwood dealer for a full explanation of benefits and restrictions.

## CONTACT US

To locate a dealer near you, visit our website at [www.fleetwoodrv.com](http://www.fleetwoodrv.com) or call 1-800-444-4905. We can also be contacted at Fleetwood Customer Relations, P.O. Box 1007, Decatur, IN 46733.

## FLEETWOOD MOTOR HOME CLUBS

As a Fleetwood owner, you're invited to become a member of several Fleetwood motor home clubs. Becoming a club member is the perfect way to meet other Fleetwood owners who love to travel across America and share in the RV lifestyle. Visit our website at [www.fleetwoodrv.com/owners\\_clubs](http://www.fleetwoodrv.com/owners_clubs) to learn more and join the fun.



YOUR LOCAL FLEETWOOD DEALER IS:



\*For complete info see your Fleetwood dealer.

©2008, Fleetwood Enterprises, Inc.  
Printed in the USA. Inventory Control Number RLE09B2, 11/08.  
Model Year 2009, Second Edition.

## IMPORTANT—PLEASE READ

Product information, photography and illustrations included in this publication were as accurate as possible at the time of printing. For further product information and changes, please visit our website at [www.fleetwoodrv.com](http://www.fleetwoodrv.com) or contact your local Fleetwood dealer. Prices, materials, design and specifications are subject to change without notice. All weights, fuel, liquid capacities and dimensions are approximate. Fleetwood has designed its recreational vehicles to provide a variety of uses for customers. Each vehicle features optimal seating, sleeping, storage and fluid capacities. The user is responsible for selecting the proper combination of loads (i.e. occupants, equipment, fluids, cargo, etc.) to ensure that the vehicle's capacities are not exceeded.

## WHY FLEETWOOD?



### Quality

There's no cutting corners. Skilled craftsmen build every Fleetwood RV for maximum durability and longevity.



### Trust

More people trust Fleetwood. After all, we've spent over 50 years perfecting RVs, earning the loyalty of generations of RVers.



### Passion

We're truly passionate about the RV lifestyle. Fleetwood was founded by RV enthusiasts, and that tradition continues today.



### Service

Help is nearby. When you need an upgrade or repair, you'll find Fleetwood dealers all across North America ready to assist you.



### Safety

You've got precious cargo. So we've engineered dozens of innovative safety features into our motor homes to give you more peace of mind.



### Warranty

Exclusive RV ownercare warranty. See your Fleetwood dealer for details.

 **FLEETWOOD**  
*Driven to Explore*



# REVOLUTION LE

CLASS A DIESEL

## RV OWNERCARE\*

Limited one-year/15,000-mile coach warranty and three-year/50,000-mile structural warranty, whichever occurs first, and it is fully transferable for the first 12 months. RV OWNERCARE is one of the RV industry's most comprehensive programs and includes systems, appliances, components and construction, with no deductible and no service charge. RV OWNERCARE coverage is provided from a company that will be around in the future to service your needs. See your nearest Fleetwood dealer for a full explanation of benefits and restrictions.

## CONTACT US

To locate a dealer near you, visit our website at [www.fleetwoodrv.com](http://www.fleetwoodrv.com) or call 1-800-444-4905. We can also be contacted at Fleetwood Customer Relations, P.O. Box 1007, Decatur, IN 46733.

## FLEETWOOD MOTOR HOME CLUBS

As a Fleetwood owner, you're invited to become a member of several Fleetwood motor home clubs. Becoming a club member is the perfect way to meet other Fleetwood owners who love to travel across America and share in the RV lifestyle. Visit our website at [www.fleetwoodrv.com/owners\\_clubs](http://www.fleetwoodrv.com/owners_clubs) to learn more and join the fun.



YOUR LOCAL FLEETWOOD DEALER IS:

\*For complete info see your Fleetwood dealer.

©2008. Fleetwood Enterprises, Inc.  
Printed in the USA. Inventory Control Number RLE09B2, 11/08.  
Model Year 2009, Second Edition.

## IMPORTANT—PLEASE READ

Product information, photography and illustrations included in this publication were as accurate as possible at the time of printing. For further product information and changes, please visit our website at [www.fleetwoodrv.com](http://www.fleetwoodrv.com) or contact your local Fleetwood dealer. Prices, materials, design and specifications are subject to change without notice. All weights, fuel, liquid capacities and dimensions are approximate. Fleetwood has designed its recreational vehicles to provide a variety of uses for customers. Each vehicle features optimal seating, sleeping, storage and fluid capacities. The user is responsible for selecting the proper combination of loads (i.e. occupants, equipment, fluids, cargo, etc.) to ensure that the vehicle's capacities are not exceeded.

## WHY FLEETWOOD?



### Quality

There's no cutting corners. Skilled craftsmen build every Fleetwood RV for maximum durability and longevity.



### Trust

More people trust Fleetwood. After all, we've spent over 50 years perfecting RVs, earning the loyalty of generations of RVers.



### Passion

We're truly passionate about the RV lifestyle. Fleetwood was founded by RV enthusiasts, and that tradition continues today.



### Service

Help is nearby. When you need an upgrade or repair, you'll find Fleetwood dealers all across North America ready to assist you.



### Safety

You've got precious cargo. So we've engineered dozens of innovative safety features into our motor homes to give you more peace of mind.



### Warranty

Exclusive RV ownercare warranty. See your Fleetwood dealer for details.

