

NEW for 2009 - Touring Edition



BIGFOOTRV.COM



30MH28TE



*Shown with optional Deluxe Painted Graphics (Strata)

Standard Features

Exterior:

- ❖ Aluminum Framed Fiberglass® Bonded Fiberglass Sidewalls c/w 1 1/2" Polyurethane Insulation (R12)
- ❖ Fiberglass® Bonded Ceiling c/w 2" Polyurethane Insulation (R16)
- ❖ Slide Out Room with Fiberglass® Bonded Fiberglass Sidewall c/w 1 1/2" Polyurethane Insulation (R12)
- ❖ Split Level Double Floor System with Insulated Basement (R12)
- ❖ Fiberglass Roof (Crowned)
- ❖ Solar Reflective Thermal Safety Glass Windows (c/w Screens)
- ❖ Folding Assist Handle
- ❖ Molded Fiberglass Front & Rear Caps
- ❖ Battery Tray
- ❖ Molded Fiberglass Storage Compartments
- ❖ Side Hinged Insulated Storage Compartment Doors
- ❖ Sewer Hose Storage Compartment
- ❖ Molded Fiberglass Running Boards
- ❖ Radius Corner Entry Door (c/w Screen Door, Deadbolt Lock and Gas Strut)
- ❖ Applied Graphics and Logos
- ❖ Roof Rack & Ladder
- ❖ Stabilizer Jacks (4)

- ❖ Docking Lights
- ❖ LED Exterior Clearance Lighting
- ❖ Trailer Hitch (Class II)

Interior:

- ❖ Washable Vinyl Wall Paneling
- ❖ Marine Quality Fabric Headliner
- ❖ Face Framed Double Screwed Cabinets
- ❖ Spring Filled Foam Mattress (60" x 74")
- ❖ Day/Night Shades
- ❖ Venetian Blind in Galley

Kitchen and Appliances:

- ❖ 3 Burner Glass Cooktop c/w Convection Microwave
- ❖ Electronic Ignition 30,000 BTU Ducted Forced Air Furnace
- ❖ Rangehood (c/w Fan & Light)
- ❖ Round Stainless Steel Sink c/w Cutting Board Sink Lid & Pull Out Faucet
- ❖ 2-Way 6 cu. ft. Refrigerator
- ❖ Air Conditioner, 13,500 BTU c/w Heat Strip (Ducted)

Electrical:

- ❖ Electrical 120-VAC/30-Amp Service
- ❖ 60-Amp DC Power Converter (c/w Battery Charger)
- ❖ Radio Selector Switch (Coach/Chassis Battery)
- ❖ Stereo AM/FM - CD Player (In Dash/Satellite Ready)

- ❖ 2 Deep Cycle Batteries (c/w Electronic Battery Disconnect)
- ❖ Electronic Systems Monitor
- ❖ Premium Interior Lighting Fixtures
- ❖ Solar Panel Pre-Wire
- ❖ Porch Light
- ❖ Security Lights (2)

Plumbing:

- ❖ City Water Hookup
- ❖ 12-Volt Demand Water Pump System
- ❖ Molded Fiberglass Shower c/w Skylight and Glass Enclosure
- ❖ Porcelain Footflush RV Toilet
- ❖ Water Heater By-Pass System c/w Anti-Freeze Pickup System
- ❖ Exterior Shower (c/w Winterizing Valves)
- ❖ Electronic Ignition LPG Water Heater (10 Gallon) c/w Motoraid & 110V
- ❖ Black Tank Rinse System
- ❖ Enclosed Heated & Insulated Holding Tanks and Termination Valve Compartment

Safety:

- ❖ MVSS 302 Fire Rated Automotive Fabric
- ❖ Smoke & Carbon Monoxide Detector
- ❖ Propane Detector
- ❖ Fire Extinguisher
- ❖ Egress Window

Optional Features

- ❖ Automotive Floor Mats with Bigfoot Logo
- ❖ Burl Oak Dash Plate
- ❖ Central Vacuum System
- ❖ Crank Up TV Antenna (Digital Signal Ready & Booster)
- ❖ Deluxe Painted Graphics
- ❖ Entertainment Center (Interior) c/w Pull Out Bunk
- ❖ Entertainment Center (Exterior) c/w Stereo AM/FM CD Player
- ❖ Fantastic Fan, Bathroom (Exhaust)
- ❖ Fantastic Fan, Bedroom (Exhaust)
- ❖ Fantastic Fan, Front Bunk (2-Way)
- ❖ Fantastic Fan, Galley (Exhaust)
- ❖ Front Windows (Thermal Pane)
- ❖ Generator, Onan 4.0 KW, Gas
- ❖ LCD TV - Front Bunk (26") - Available only without the optional Interior Entertainment Centre
- ❖ LCD TV - Bedroom (19" 12 Volt c/w LCD TV Prep. Package)
- ❖ LCD TV Prep. Package - Bedroom (c/w Swing Arm)
- ❖ Optima Leather Furniture Upgrade
- ❖ Optima Leather Command Chairs
- ❖ Rear View Camera System
- ❖ RV BBQ Hookup
- ❖ Self Storing Awning (19')
- ❖ Self Storing Awning - Power (19')
- ❖ Slide Topper Awning
- ❖ Solar Energy System (RV110)
- ❖ Stainless Steel Appliances

- ❖ Surround Sound/DVD Player
- ❖ Television (32" LCD HDTV) - Available only with the optional Interior Entertainment Centre

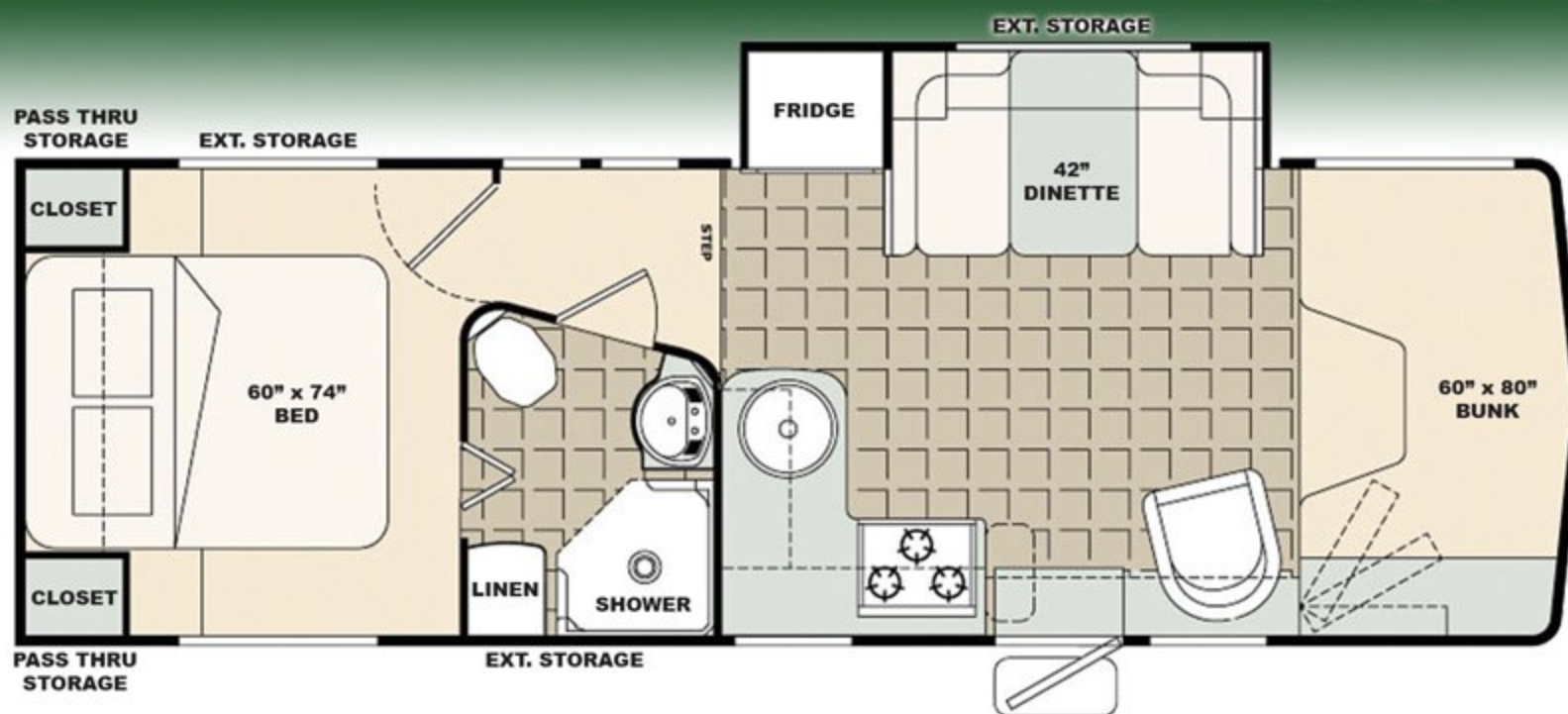
Chassis:

- ❖ Electric Remote Mirrors (Heated)
- ❖ Power Windows & Door Locks (Mandatory Option)
- ❖ Wheel Simulators (Stainless Steel)
- ❖ Rear Auxiliary Automotive Travel Heater
- ❖ Power Drivers Seat (Optional)

Standard Built Package:

- ❖ Battery Tray (Sliding)
- ❖ Bedroom Décor Package (c/w Residential Mattress Upgrade, Bedspread & Throw Pillows)
- ❖ Electric Step
- ❖ Generator Ready Package (c/w Hour Meter & Automatic Transfer Relay)
- ❖ Rear Axle Air Bags (c/w Air Compressor)
- ❖ Rear Roller Bar (18" x 6" Diameter)
- ❖ Skylight in Living Room (Opening c/w Pleated Shade)





▲ Living Area

Specifications	Units		30MH28TE	
Overall Length	ft-in	mtr	29'-3"	8.91
Overall Height*	ft-in	mtr	11'-3"	3.43
Overall Width	ft-in	mtr	8'-4"	2.54
Interior Headroom (Front)	ft-in	mtr	7'-6"	2.28
Interior Headroom (Rear)	ft-in	mtr	6'-6"	1.98
Wheelbase	in.	mtr	190"	4.83
Base Dry Weight	lbs	kg	12435	5642
GVWR	lbs	kg	14500	6578
GCWR	lbs	kg	20000	9072
Tires	Size		LT225/75R16E	
Fuel Tank	US Gallon	litres	55	208
Fresh Water	US Gallon	litres	73	276
Grey Water	US Gallon	litres	32	122
Black Water	US Gallon	litres	32	122
LPG Capacity	lbs	litres	90	41
Water Heater	US Gallon	litres	10	38
Furnace	BTU		30000	
Refrigerator (2 Way)	cu. ft.	litres	6	169

*To top of Roof A/C



▲ Galley

BIGFOOT WARRANTY

Bigfoot Industries provides a one-year limited warranty on all Bigfoot Products. In addition, Bigfoot Industries offers a three-year limited structural integrity warranty on all 1500 and 2500 Series models and a five-year limited structural integrity warranty on all 3000 and 4000 Series models.

Appliance warranties vary and are set by the respective manufacturer. Please contact your dealer for complete details regarding warranty policies.

The information contained herein is as accurate as possible at the time of publication. Subsequent refinements and improvements may be evident in the actual products. All liquid capacities are approximate and dimensions are nominal. Some equipment and features illustrated may be optional, or for presentation purposes only.

This brochure may not be used for contractual purposes. Bigfoot Industries reserves the right to improve or modify its products without prior written notice.



▲ 60" x 74" Walk Around Bed



Go RVing.

~ your local Bigfoot specialist ~

Bigfoot Industries

4114 Crozier Road, Armstrong, British Columbia, Canada, V0E 1B6 • Phone: 250-546-2177
Please visit our website at: www.bigfootrv.com or www.BigfootOwners.com