


SLOW DOWN. GOOD TIMES AHEAD.


Bounder
CLASS A GAS



2009 BOUNDER

 FLEETWOOD.



BOUNDER MAKES YOUR DOLLAR GO AS FAR AS YOU DO.

After all your years of hard work, now it's time to enjoy life. You want to travel, visit family and see friends. Bounder was made for you. It's a fully equipped motor home with the components, furnishings and features you need at a value price. Features like full-body paint, Ford®or Workhorse™ chassis, deluxe cabinet doors, and extra storage compartments, make Bounder the motor home that makes your money go further.

Quality



There's no cutting corners. Skilled craftsmen build every Fleetwood RV for maximum durability and longevity.



BOUNDER



THE COCKPIT is designed for your comfort and convenience during those long hours on the road. The gauges are easy to read, and controls are within easy reach. Even the Flexsteel® driver and passenger seats are designed to reduce fatigue on cross-country drives – and the Ultraleather™ is softer and easier to clean.



THE SOFA is the ideal place to get lost in a book with a nice, cool glass of iced tea. For an extra touch of class, treat yourself to the optional Ultraleather™ covering.



THE ENTERTAINMENT SYSTEM features a 26" or 32" LCD HDTV (size varies by model) and spacious wood cabinetry to store other electronics. When visiting Tombstone, Arizona, you might watch "Gunfight at the O.K. Corral" for an entertaining history lesson!



BOUNDER 38P shown in Quartz interior décor with Plantation Cherry wood cabinetry.

Why Buy Bounder?

More Value for Your Money

When you compare motor homes, Bounder gives you more for your dollar. It's packed with features and ready to go.

Maximum Functionality

Bounder is known as "The Motor Home That Really Works" because it provides straightforward functionality.

Built for Long Trips

Go right ahead and plan that cross-country journey. We built Bounder for extended travel.

Trusted Name

Bounder has been popular for more than 20 years, with sales unmatched by any other motor home brand.

Fully Equipped

Bounder provides the necessities for a comfortable, convenient, and safe journey. It includes many features standard that others consider optional.



COOK TO YOUR HEART'S CONTENT.

Bounder makes it easy to prepare a family meal, where key appliances are within easy reach and countertop space is abundant. These are just two examples of how Bounder delivers maximum functionality through smart design. But while cooks love the galley, it's also a great place to entertain friends and family. With plenty of floor space and roomy slide-outs, everyone can be comfortable.

Trust



More people trust Fleetwood. After all, we've spent over 50 years perfecting RVs, earning the loyalty of generations of RVers.



BOUNDER



THE DINETTE (optional U-shaped dinette shown above, available on 38P only) brings you a glorious sunset out the picture window to enjoy with your dinner. Afterwards, there's room for four to play dominoes. And you can store them conveniently underneath the seat, with the rest of your favorite games. When you've got an overnight guest, the standard dinette converts to an extra bed.

THE FULL EXTENSION DRAWERS allow you to store things at the very back. No storage space is wasted.





THE GALLEY is decked out with the appliances you need to whip up a meal for two...or twenty-two. And you have lots of countertop room for party trays – simply slide-out the countertop extension for even more horizontal space.



THE MICROWAVE warms up your coffee, pops popcorn and defrosts in a flash. If you like baking, try the optional convection microwave (shown above) that bakes just like an oven and cooks like a standard microwave.

THE REFRIGERATOR stores so much food, you can host that family reunion. The optional Norcold® 4-door, or the optional Dometic® 4-door (shown below), holds 12 cubic feet of food, with a roomy interior for party trays. Includes a handy icemaker to cool your drink on hot days.



THE CABINETRY is beautiful on the outside, smart on the inside. The shelves are adjustable, and lined so your dishes don't rattle in transit. Best yet, the cabinets are deep enough for full-sized plates so you don't have to eat off salad plates.

REST ASSURED.

You can sleep well when you buy a motor home that's been proven for more than 20 years. The trailblazing Bounder set a new standard for motor homes over two decades ago, and is still one of the top-selling motor homes on the road. And Bounder is built by Fleetwood, a respected industry leader for more than 55 years. To top it all off, Bounder is backed by one of the most comprehensive warranties available. It's no wonder owners continue to be wild about Bounder.

Passion



We're truly passionate about the RV lifestyle. Fleetwood was founded by RV enthusiasts, and that tradition continues today.



BOUNDER



THE SHOWER has a low threshold – with one small step you're inside the roomy stall. The water temperature adjusts quickly, so you can avoid a cold shower. In fact, Bounder features a 10-gallon water heater, where many competitors only offer a 6-gallon heater.

THE WASHER AND DRYER COMBO (optional) performs double duty, washing and drying your clothes while you roll down the highway. It is hidden away behind handsome cabinetry.





THE BEDROOM SUITE provides plenty of room for relaxing, thanks to the bedroom slide-out on every model. But nothing's more relaxing than the inviting bed, with its queen-size Restonic® mattress. For even more cushiony acreage, some models offer an optional king-size bed.

THE SPACIOUS WARDROBE turns on a light when you open the door, so you can see your neatly organized clothing inside the cedar-lined closet. When the door is closed, you can double-check your outfit in the mirror. Below, fully extending drawers provide easy access to items at the very back.



UNDER BED STORAGE
Provides an out of the way space to store linens, clothing, towels, and more.



THE BEDROOM TV (optional) is positioned just right to watch the LCD HDTV in bed. Catch a little Leno before your 40 winks.

FIRE STORM
Scheme 1*



GRANITE PEARL
Scheme 1*



CHAMPAGNE STAR
Scheme 1*



RIVER ROCK
Scheme 1*



LEAP LARGE STATES IN A SINGLE BOUNDER.

Bounder is ideal for extended trips. It's designed for superior durability and maximum comfort. The galley is spacious, storage room is ample, and the tanks have a large capacity so you can dry camp longer. Even the exterior full-body paint is made for long wear. We apply DuPont® paint in a two-stage process for durability and beauty. Now, the most difficult part will be choosing your color.

WHITE SHADOW
Scheme 1*



BAHAMA BLUES
Scheme 1*



BEIGE BOUNTY
Scheme 2*



*See your Fleetwood dealer or visit our website at www.fleetwoodrv.com to view all graphic and color choices.

PROOF THAT PRETTY CAN BE PRACTICAL.

These attractive fabrics and handsome wood finishes are pleasing to the eye. But you'll be even more pleased when you find out how durable they are. All the surfaces in Boulder are long-wearing and easy to clean so your motor home will look nice for years to come. Pick your favorite from these palettes.

INTERIOR DÉCORS

CASHMERE

Living/Dining Room



Sofa

Dinette Cushions

Ultraleather™
Driver and Front
Passenger Seats,
Sofa (optional)

Bedroom



Headboard &
Bedsread

Pillow Shams &
Throw Pillows

QUARTZ

Living/Dining Room



Sofa

Dinette Cushions

Ultraleather™
Driver and Front
Passenger Seats,
Sofa (optional)

Bedroom



Headboard &
Bedsread

Pillow Shams &
Throw Pillows

SEASIDE SAND

Living/Dining Room



Sofa

Dinette Cushions

Ultraleather™
Driver and Front
Passenger Seats,
Sofa (optional)

Bedroom



Headboard &
Bedsread

Pillow Shams &
Throw Pillows

WOOD FINISHES



Plantation Cherry



Symphony Cherry

EVERYTHING YOU NEED. NOTHING YOU DON'T.

Since its inception, Bouncer has been known for its functionality and affordability. Both inside and out, Bouncer continues to provide dozens of standard features to make your travels memorable and effortless.

- 1 EXTERIOR AWNING makes a pleasant front porch to sit under on a sunny day. (Electric version is optional.)
- 2 5.5 KW ONAN® GENERATOR runs very quietly but provides plenty of power. Perfect for dry camping.
- 3 WHOLE COACH WATER FILTRATION delivers safe, fresh drinking water throughout your coach.
- 4 DIAMOND SHIELD (optional) protects your paint finish on the lower front cap from paint chips and damage caused by road debris, bug acids and weathering. This clear, 8 mil. urethane film will help preserve the beauty of your Bouncer.

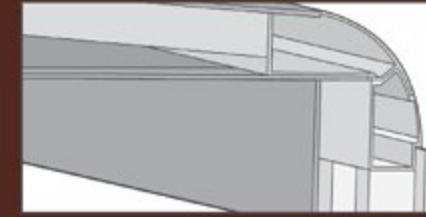


Vehicle shown in River Rock Scheme 1 exterior graphics.

- 5 TUFF-PLY ROOF is UV resistant, durable and doesn't scratch like many competitors' fiberglass roofs.
- 6 REAR VISION CAMERA helps you back up with a color video feed to the driver's area and one way audio from the back of the coach to the driver (side view cameras are available.)
- 7 DUAL A/C UNITS are mounted on the roof to provide maximum cooling and plenty of storage.
- 8 AUTOMATIC LEVELERS level the coach at four points with the touch of a button.



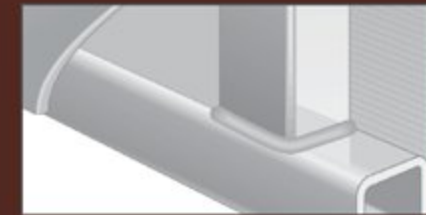
Vehicle shown in River Rock Scheme 1 exterior graphics.



INTERLOCKING CEILING-TO-SIDEWALL CONSTRUCTION helps keep the box square. This assures a proper cabinet fit.



INTERLOCKING FLOOR-TO-SIDEWALL CONSTRUCTION locks tightly to keep out water, dust and noise, and helps eliminate squeaks and rattles.



VACU-BOND® SIDEWALL CONSTRUCTION creates a strong, weather-resistant structure. The sidewalls, floor and ceiling are Vacu-bonded to a durable metal frame, far superior to the pinch roll method our competitors often use.



BOUNDER

PEACE OF MIND INCLUDED, STANDARD.

Fleetwood engineers have built dozens of safety features into Bounder, from the 3-point seat belts to the leveling jacks that automatically retract if the transmission is engaged. Combined with Fleetwood's superior construction, the result is a motor home you can depend on for high quality and safety.

Safety

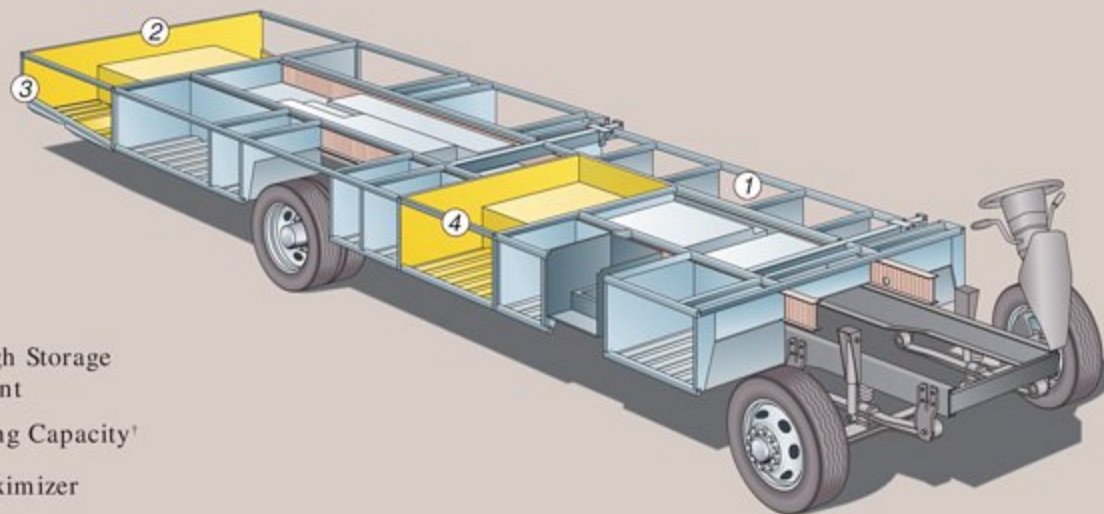


You've got precious cargo. So we've engineered dozens of innovative safety features into our motor homes to give you more peace of mind.



THE POWER PLATFORM®. BUILT FOR STRENGTH, STABILITY AND PASS-THROUGH STORAGE.

Fleetwood's patented Power Platform® is the envy of our competitors. The ultra-strong chassis provides enormous storage space, lined with molded polyethylene for easy cleaning and lit to help you see after dark. The holding tanks are positioned in the bottom to enhance balance, and enclosed so they can be heated in cold weather to help prevent freezing.



- ① EZ Store
- ② Pass-Through Storage Compartment
- ③ Large Towing Capacity†
- ④ Storage Maximizer

Drawings are for illustrative purposes only to highlight aspects of motor home construction. Actual motor home design depends on model and is subject to change.

† The chassis manufacturer recommends the installation of a supplemental brake control system to activate the brakes on the vehicle or trailer you are towing. Hitch receiver ratings expressed are maximum for the hitch receiver installed and may require the purchase of additional equipment that is dependent on the weight of the towed load. Consult with hitch receiver manufacturer for further information.



THE UTILITY COMPARTMENT is the central place to hook up to water, sewer and cable. The water sprayer is handy for hosing out the compartment – or giving Rover a bath.



THE EZ STORE COMPARTMENT is the perfect place to store extra-long equipment, such as a ladder or casting rods. The compartment moves with the slide-out so you don't have to stoop underneath to get your stuff.



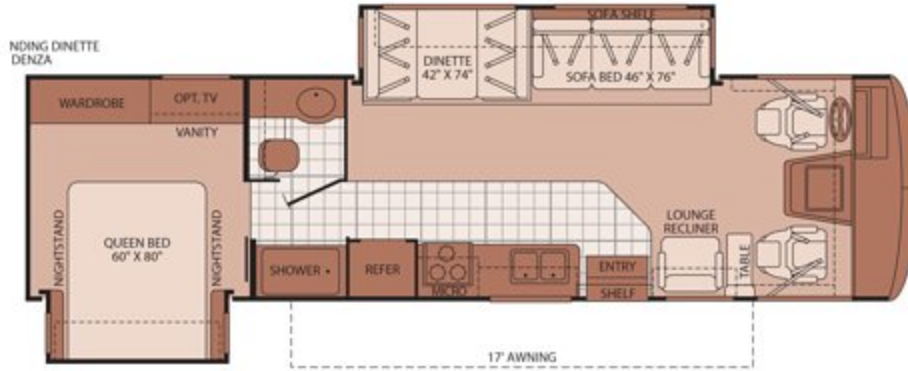
PASS THROUGH STORAGE (select models) is another great place for long items, like golf clubs or fishing gear, coolers and chairs, because you can take them out from either side. Plus, side swinging luggage doors make it easy to grab what you need and go (available on select doors).



STORAGE MAXIMIZER does exactly that – gives you maximum storage. It's the perfect place for bulky items like portable fire pits.

Bounder Floor Plans

32W

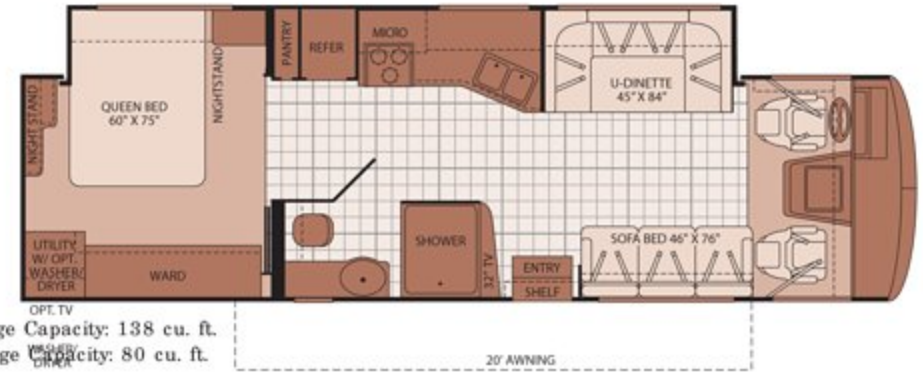


Interior Storage Capacity: 140 cu. ft.
Exterior Storage Capacity: 115 cu. ft.

- Lots of galley countertop space for easy entertaining
- Compact floor plan with two slide-outs
- Available Options: 491, 700, 807, 832, 833, 852

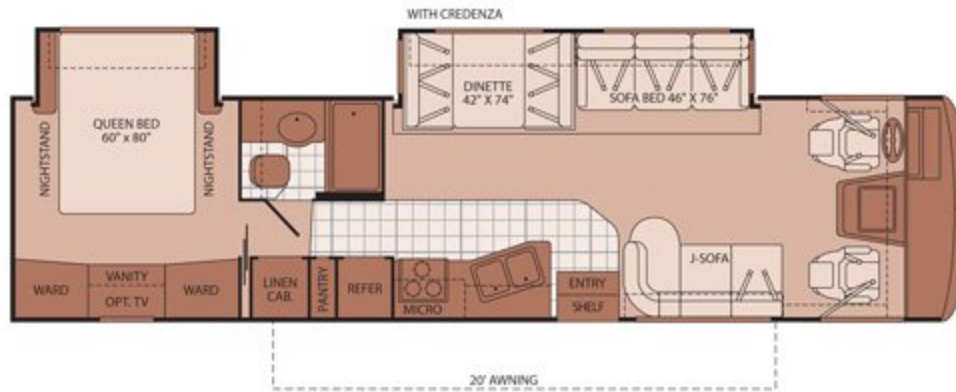
33U

- Compact floor plan with full-size features
- Mid-coach 32" LCD HDTV
- Available Options: 122, 126, 149, 852



Interior Storage Capacity: 138 cu. ft.
Exterior Storage Capacity: 80 cu. ft.

34G



Interior Storage Capacity: 177 cu. ft.
Exterior Storage Capacity: 136 cu. ft.

- Residential-like opposing sofas
- Self-contained bathroom with bathtub
- Available Options: 122, 149, 700, 807, 832, 833, 852

35E

- Huge living room slide-out for a wide open feel
- Bedroom suite with full-width bathroom and 42" extra large shower
- Available Options: 122, 126, 149, 491, 700, 832, 833



Interior Storage Capacity: 190 cu. ft.
Exterior Storage Capacity: 150 cu. ft.

35H

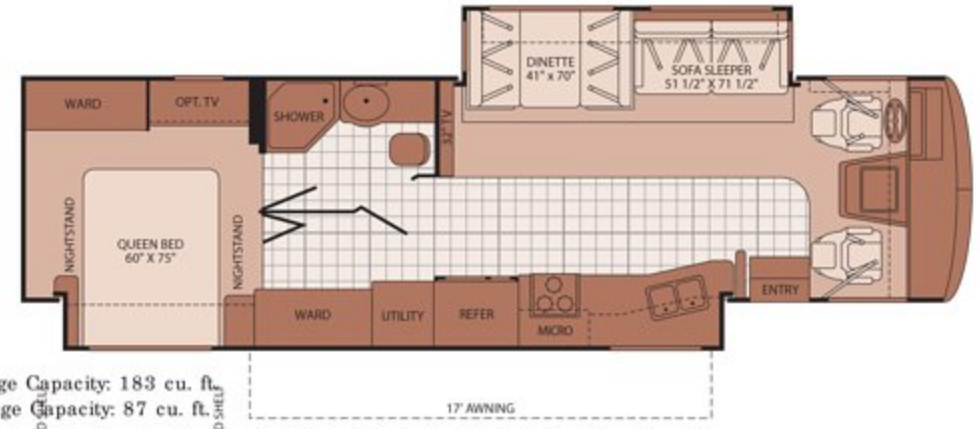


Interior Storage Capacity: 169 cu. ft.
Exterior Storage Capacity: 150 cu. ft.

- Unique bath and a half layout for maximum privacy
- Full-width rear bathroom with 42" extra large shower and second toilet
- Available Options: 122, 126, 149, 491, 700, 832, 833

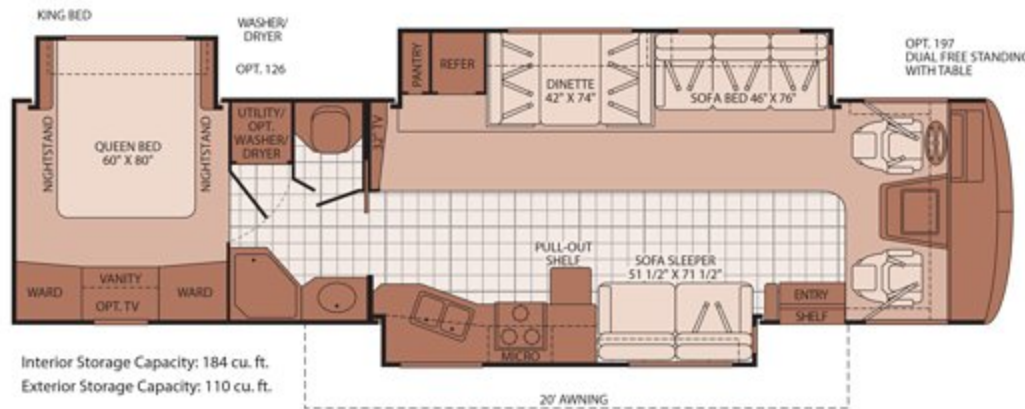
35J

- Mid-coach 32" LCD HDTV
- Unique patio side full-wall slide-out
- Available Options: 122, 126, 149, 631, 700, 832, 833, 852



Interior Storage Capacity: 183 cu. ft.
Exterior Storage Capacity: 87 cu. ft.

38P



Interior Storage Capacity: 184 cu. ft.
Exterior Storage Capacity: 110 cu. ft.

Interior Storage Capacity: 184 cu. ft.
Exterior Storage Capacity: 110 cu. ft.

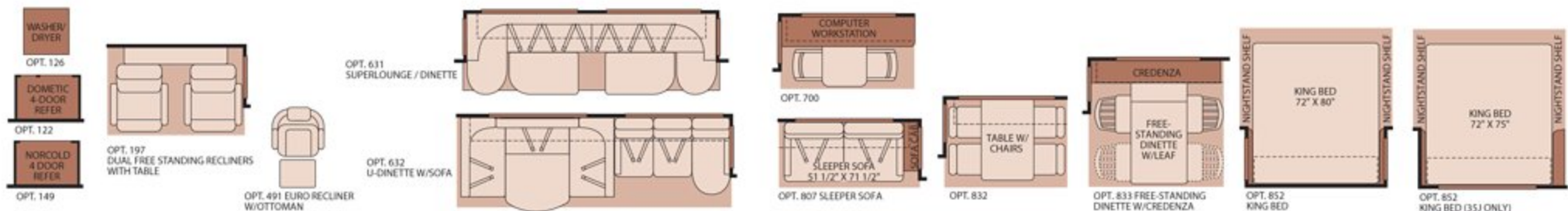
- Mid-coach 32" LCD HDTV
- Large square footage for more comfortable, longer trips
- Large u-shaped dinette available for a more spacious feel
- Available Options: 122, 126, 149, 197, 632, 700, 832, 833, 852

Service



Help is nearby. When you need an upgrade or repair, you'll find Fleetwood dealers all across North America ready to assist you.

OPTIONS



STANDARD FEATURES

INTERIOR - Throughout

- 120V/12V AC/DC Converter
- 3 Interior Décor
- Water Pump Switches in Multiple Locations
- 34,000 Btu Furnace (30,000/20,000 Btu on 33U and 38P)
- 10 Gallon Quick Recovery Water Heater w/Direct Spark Ignition (Gas/Electric)
- Central Electrical Panel
- Complete TuffPEX Plumbing System
- Deluxe Roller Bearing, Full Extension Drawer Guides & Transit Ship Locks
- Dual 6V Deep Cycle House Batteries
- Dual Roof A/C High Efficiency w/Solar Panel & Chill Grills
- Energy Management System
- Fluorescent Ceiling Lights
- Incandescent Lighting
- Plush Wall-to-Wall Carpet w/Carpet Pad
- Solid Divider Doors
- Telephone Jack In-Dash
- TV Antenna w/Signal Booster
- Wall Switches
- Water Heater Bypass Valve
- Whole Coach Water Filtration System
- Wood Drawers
- Soft Touch Vinyl Ceiling
- Computer Workstation In-Dash

Driver Convenience

- 3 Point Seat Belts at Driver & Front Passenger Seats
- AM/FM Radio w/CD Player, Satellite Radio Ready
- Denso® Auto A/C Heater Combo
- Auxiliary Start Circuit
- Battery Disconnect Switches
- CB Radio Ready
- Cruise Control
- Dash Fans
- Double Swivel Sun Visors w/Map Pockets
- Ultraleather™ Driver/Front Passenger Captain's Chairs w/Reclining Back/Slide Controls
- Intermittent Wiper Control
- Low Profile Engine Cover
- Monitor Panel in Dash
- Radio Switch Main/Auxiliary Power
- Soft Surface Automotive Dash
- Tilt Steering Wheel
- Color Rear Vision System
- DSS Manual Lift Satellite Dish

Living Room

- 26" LCD HDTV (26" and 32" LCD HDTV in 33U, 35J and 38P)
- DVD Player
- Entry Assist Handle
- Lounge Recliner (Select Models)
- Residential Seat Styling

Galley

- 1.4 cu.ft. Over the Range Microwave Oven w/Electronic Touch Pad
- 8 cu.ft. Dometic® Double Door Refrigerator

- Adjustable Cabinet Shelves (Select Cabinets)
- Demand Water Pump
- Fan-Tastic® Power Roof Vent
- Folding Range Cover
- Large Drawers Under Dinette
- Large, Double Stainless Steel Sink
- Raised Panel Cabinet Doors
- Single Lever Galley Faucet w/Pullout Sprayer
- Sink Cover/Cutting Board
- Vinyl Flooring
- Waste Basket
- 3 Burner, High Output Range w/Oven
- Dream Dinette Mechanism

Bedroom

- Bedspread w/Decor Pillows
- Pleated Shades
- Rear Speakers
- Restonic® Innerspring Mattress
- Second Phone Jack
- Wardrobe Lighting
- Torque Windows

Bathroom

- Fan-Tastic® Power Roof Vent w/Wall Switch
- Glass Shower Enclosure w/Skylight and Lower Step Threshold
- Hardwood Bath Door/Trims
- Molded Tub/Shower Enclosure
- Porcelain Toilet w/Water Saver
- Skylight in Tub/Shower
- Toilet Tank San-T-Flush™ System

Safety/Convenience

- 10 lb ABC Fire Extinguisher
- Carbon Monoxide Detector/Alarm
- Propane Detector/Alarm
- Smoke Detector/Alarm
- Child Safety Tether
- Multiple Seatbelt Locations

EXTERIOR - Throughout

- 2 Graphic Schemes Available
- 5.5 kW Onan® MicroQuiet Generator
- 50 Amp Service
- Dual Battery Charge Control
- Dual Pane Windows w/Screens
- Dual Patio Receptacles
- Fiberglass Front/Rear Caps
- Full-Body Paint
- Heated Water & Holding Tank Compartments
- Mud Flaps
- Park Cable Receptacle
- Patio Awning
- Utility Compartment w/Exterior Shower
- ABS Wheel Well Trims
- TV/12V Jack in Doorside Compartment

Automotive

- 4 Point Automatic Levelers
- Large One-Piece Bonded-in Windshield
- Trailer Hitch w/7 Pin Electrical Hook-Up¹
- Underhood Utility Light

- 22" Aluminum Wheels
- New Wiper System with Larger Swept Area Than Previous Design

Safety/Convenience

- Wide, 30" Entry Door w/Screen Door & Deadbolt Lock
- Porch Light (Doorside)
- Power Entry Step
- Remote/Heated Rear View Mirrors
- Roof Ladder
- Automotive Safety Glass
- Daytime Running Lights
- Hydraulic 4 Wheel Disc Brakes w/4 Wheel Anti-Lock Brakes

Storage

- EZ Store Compartment on Living Area Slide-Outs
- Gas Lift Strut Supports
- Hidden, Stainless Steel Latch Rods
- Insulated Aluminum Luggage Doors w/Single Paddle Metal Latches & Stainless Steel Hinges
- Lighted Luggage Compartments
- Pass Through Storage (Select Models)
- Rotomolded Polyethylene Luggage Compartments
- Side Swinging Luggage Doors (Select Locations)

Body Structure

- Aluminum Interlocking Floor/Wall/Ceiling Framing
- Power Platform® Construction (Fleetwood Exclusive)
- Basement Floor Configuration
- Royal Tuff-Ply Radius Roof w/Ducted A/C
- Vacu-bond® Upper/Lower Floors
- Vacu-bond® Walls w/Smooth High Gloss Exterior Tuff-Coat® Fiberglass

OPTIONS

INTERIOR

- CSA Package (Canadian Specs)**
- Sirius Satellite Radio® (6 Month Subscription Included)
- Washer/Dryer (Select Models)
- 1200 Watt Inverter
- DSS Auto Seek Satellite Dome

Driver Convenience

- Side View Signal Camera
- Powered Front Shade

Living Room

- Leather Euro Recliner w/Ottoman
- Sofa w/Footrest
- Ultraleather™ Sofa Bed
- Ultraleather™ Hide-A-Bed
- Ultraleather™ Lounge Recliner
- Ultraleather™ Sofa w/Footrest

Galley

- 3 Burner Cooktop
- 12 cu. ft. Dometic® 4 Door Refrigerator w/Ice Maker (Select Models)
- Convection Microwave Oven
- Free-Standing Table & Chairs
- 12 cu. ft. Norcold® 4 Door Refrigerator w/Ice Maker (Select Models)

Bedroom

- LCD HDTV

EXTERIOR

- Diamond Shield Clear Front Protective Mask
- Electric Awning

FLEETWOOD ADVANTAGES

- Power Platform® Construction (Fleetwood Exclusive)
- Pass Through Storage (Select Models)
- DuPont® Full-Body Paint Standard
- 7 Floor Plans from 33' to 38' w/Double, Triple or Full-Wall Slide-Outs
- Multiple Décor, Wood and Exterior Graphics Combination to Customize Your Bounder

**CSA standards may require substitution or deletion to achieve conformance.

WEIGHTS AND MEASUREMENTS

FORD®/WORKHORSE™ CHASSIS

MODELS	32W	33U	34G	35E	35H	35J	38P
Engine Displacement (Liters)	6.8/8.1	6.8/8.1	6.8/8.1	6.8/8.1	6.8/8.1	6.8/8.1	6.8/8.1
Wheelbase (Inches)	208"	208"	228"	228"	228"	228"	242"
GVWR (lbs) ¹	22,000	22,000	22,000	22,000	22,000	22,000	24,000
Front GAWR (lbs) ²	7,500	7,500	7,500	7,500	7,500	7,500	9,000
Rear GAWR (lbs) ²	14,500	14,500	14,500	14,500	14,500	14,500	15,500
GCWR (lbs) ³	26,000	26,000	26,000	26,000	26,000	26,000	30,000
Hitch Rating Weight (lbs) ⁴	5,000	5,000	5,000	5,000	5,000	5,000	6,000
Tongue Weight (lbs) ⁴	500	500	500	500	500	500	600
Fuel Capacity (gal)	75	75	75	75	75	75	75

DIMENSIONS & CAPACITIES

MODELS	32W	33U	34G	35E	35H	35J	38P
Overall Length ⁴	33' 3"	34' 3"	35' 3"	36' 3"	36' 3"	36' 3"	38' 3"
Overall Height (with A/C)	12' 10"	12' 10"	12' 10"	12' 10"	12' 10"	12' 10"	12' 10"
Overall Width (maximum) ^{5, 6}	102"	102"	102"	102"	102"	102"	102"
Interior Height (maximum)	84"	84"	84"	84"	84"	84"	84"
Interior Width (maximum)	96"	96"	96"	96"	96"	96"	96"
Fresh Water Holding Tank (gal)	85	85	85	85	85	85	85
Grey Water Holding Tank (gal)	58	58	58	58	58	58	58
Black Water Holding Tank (gal)	42	42	42	42	42	42	42
Appliance Propane Tank (gal) (WC) ⁷	25	25	25	25	25	25	25
Water Heater Tank (gal)	10	10	10	10	10	10	10

Liquid Weight Reference: Water (gal) = (8.3 lbs/3.8 kgs) Fuel (gal) = (6.1 lbs/2.8 kgs) Propane (gal) = (4.2 lbs/1.9 kgs)
Metric Conversion: Multiply pounds x 0.453 to obtain kilograms. Multiply gallons x 3.785 to obtain liters. Multiply liters x 61 to obtain cubic inches.

- GVWR (Gross Vehicle Weight Rating) is the maximum permissible weight of this fully loaded motor home. The GVWR is equal to or greater than the sum of the (UVW) unloaded vehicle weight plus the (OCCC) occupant and cargo carrying capacity*.
- GAWR (Gross Axle Weight Rating) is the maximum permissible loaded weight a specific axle is designed to carry.
- GCWR (Gross Combined Weight Rating) is the value specified by the motor home manufacturer as the maximum allowable loaded weight of this motor home with its towed vehicle. Towing and braking capacities may be different. Refer to Fleetwood and chassis manufacturer's manuals for complete information.
- Length is measured from front bumper to rear bumper (excludes accessories).
- Excludes safety equipment and awnings.
- Motor homes feature a body-width over 96" which will restrict your access to certain roads. Before purchasing, you should research any state and/or province road laws which may affect your usage.
- Tank manufacturer's listed water capacity (WC). Actual propane capacity is 80% of water listing as required by the safety code.

- The chassis manufacturer recommends the installation of a supplemental brake control system to activate the brakes on the vehicle or trailer you are towing. Hitch receiver ratings expressed are maximum for the hitch receiver installed and may require the purchase of additional equipment that is dependent on the weight of the towed load. Consult with hitch receiver manufacturer for further information.

N/A = not available at time of printing.

* UVW and OCCC are found on the label containing the federal certification tag in each RV.

IMPORTANT— PLEASE READ: Product information, photography and illustrations included in this publication were as accurate as possible at the time of printing. For further product information and changes, please visit our website at www.fleetwoodrv.com or contact your local Fleetwood dealer. Prices, materials, design and specifications are subject to change without notice. All weights, fuel, liquid capacities and dimensions are approximate. Fleetwood has designed its recreational vehicles to provide a variety of uses for its customers. Each vehicle features optimal seating, sleeping, storage and fluid capacities. The user is responsible for selecting the proper combination of loads (i.e. occupants, equipment, fluids, cargo, etc.) to ensure that the vehicle's capacities are not exceeded.

CHASSIS

Model: Ford®/Workhorse™
Engine: 6.8L Triton V10/8.1L Vortec™ V8
Transmission: Ford®, 5-Speed Automatic w/Overdrive
Workhorse™, 6-Speed Automatic w/Overdrive
Torque: 457 lb-ft @ 3250 RPM/455 lb-ft @3200 RPM
Alternator: 130 Amp/145 Amp
Horsepower: 362HP/340HP

Warranty



Exclusive RV ownerscare warranty.
See your Fleetwood dealer for details.

Bounder
CLASS A GAS



RV OWNERCARE*

Limited one-year/15,000-mile coach warranty and three-year/50,000-mile structural warranty, whichever occurs first, and it is fully transferable for the first 12 months. RV OWNERCARE is one of the RV industry's most comprehensive programs and includes systems, appliances, components and construction, with no deductible and no service charge. RV OWNERCARE coverage is provided from a company that will be around in the future to service your needs. See your nearest Fleetwood dealer for a full explanation of benefits and restrictions.

CONTACT US

To locate a dealer near you, visit our website at www.fleetwoodrv.com or call 1-800-444-4905. We can also be contacted at Fleetwood Customer Relations, P.O. Box 1007, Decatur, IN 46733.

FLEETWOOD MOTOR HOMES CLUBS

As a Fleetwood owner, you're invited to become a member of several Fleetwood motor home clubs. Becoming a club member is the perfect way to meet other Fleetwood owners who love to travel across America and share in the RV lifestyle. Visit our website at www.fleetwoodrv.com/owners_clubs to learn more and join the fun.



YOUR LOCAL FLEETWOOD DEALER IS



*For complete info see your Fleetwood dealer.

©2008. Fleetwood Enterprises, Inc.
Printed in the USA. Inventory Control Number BDF09B2, 11/08.
Model Year 2009, Second Edition.

IMPORTANT—PLEASE READ

Product information, photography and illustrations included in this publication were as accurate as possible at the time of printing. For further product information and changes, please visit our website at www.fleetwoodrv.com or contact your local Fleetwood dealer. Prices, materials, design and specifications are subject to change without notice. All weights, fuel, liquid capacities and dimensions are approximate. Fleetwood has designed its recreational vehicles to provide a variety of uses for customers. Each vehicle features optimal seating, sleeping, storage and fluid capacities. The user is responsible for selecting the proper combination of loads (i.e. occupants, equipment, fluids, cargo, etc.) to ensure that the vehicle's capacities are not exceeded.

WHY FLEETWOOD?



Quality
There's no cutting corners. Skilled craftsmen build every Fleetwood RV for maximum durability and longevity.



Trust
More people trust Fleetwood. After all, we've spent over 50 years perfecting RVs, earning the loyalty of generations of RVers.



Passion
We're truly passionate about the RV lifestyle. Fleetwood was founded by RV enthusiasts, and that tradition continues today.



Safety
You've got precious cargo. So we've engineered dozens of innovative safety features into our motor homes to give you more peace of mind.



Service
Help is nearby. When you need an upgrade or repair, you'll find Fleetwood dealers all across North America ready to assist you.



Warranty
Exclusive RV ownercare warranty. See your Fleetwood dealer for details.

