

SAVOY® LE & LX  
2009



HOLIDAY RAMBLER®

*This is Living®*



*Savoy LE & LX*

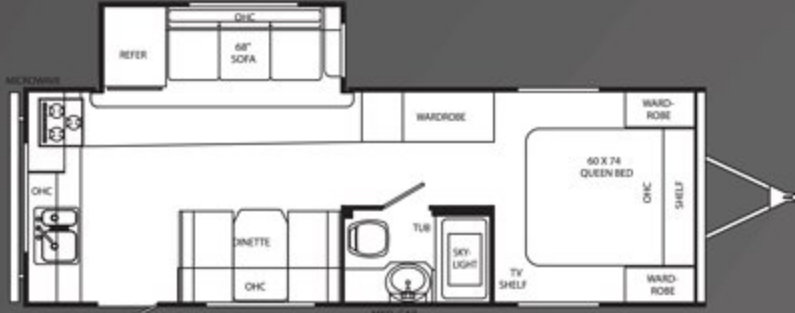






SAVOY LETT

26RKS LETT



28SKS LETT



29CKS LETT



29FLS LETT



30CKS LETT



30FKS LETT



SAVOY LEFW

25RLS LEFW



27BHS LEFW



27RLS LEFW

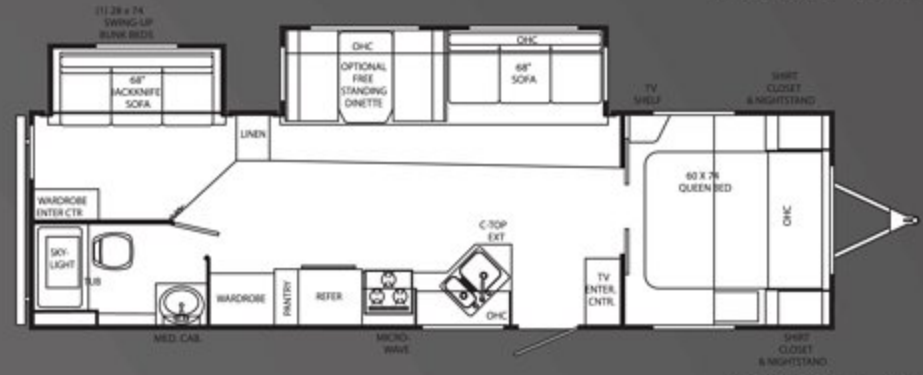




28RBS LXTT



30BHD LXTT



30RLS LXTT



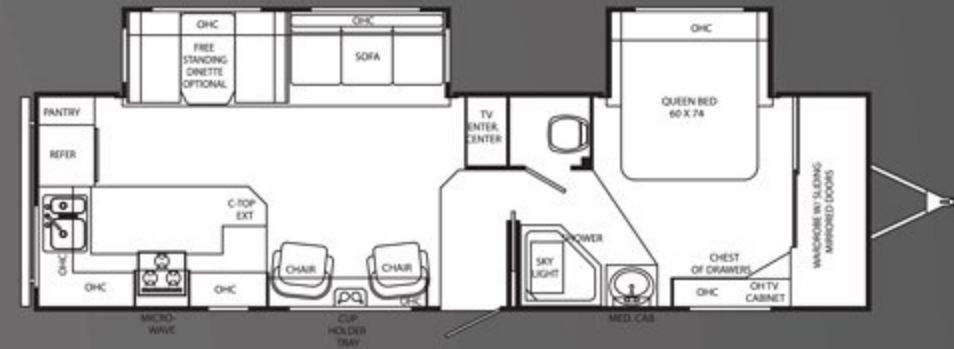
32FKD LXTT



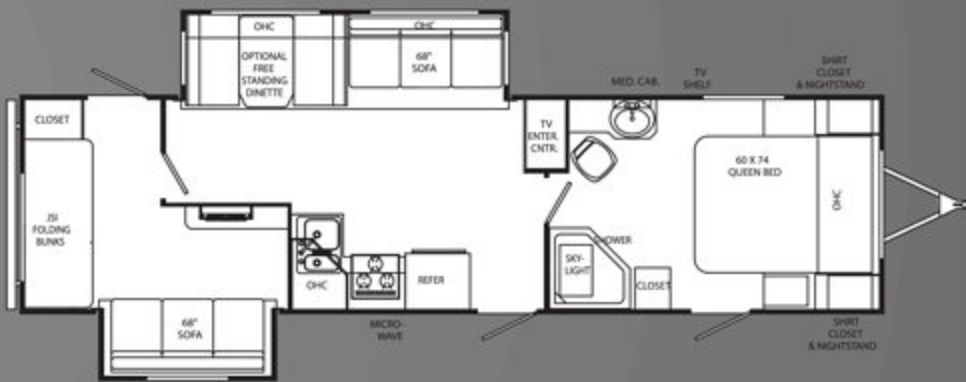
32RBS LXTT



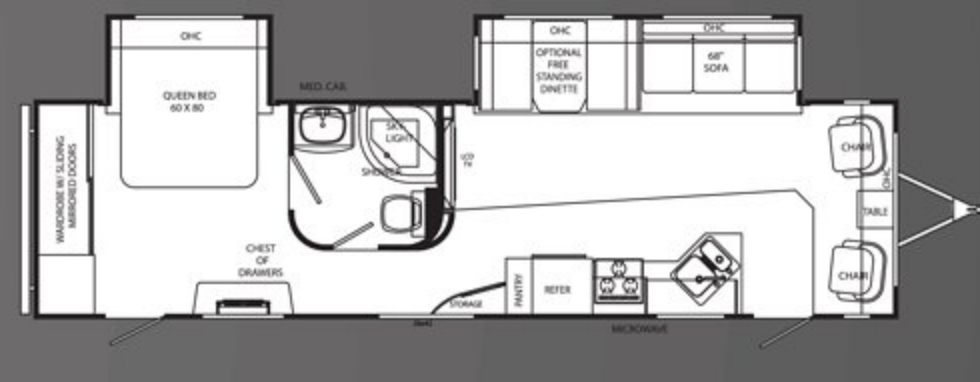
32RKD LXTT



33BHD LXTT



33FLD LXTT



28RLD LXFW



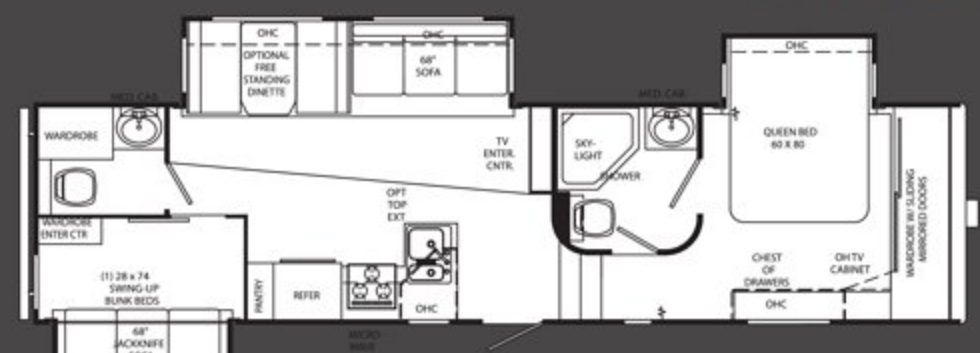
34SKD LXTT



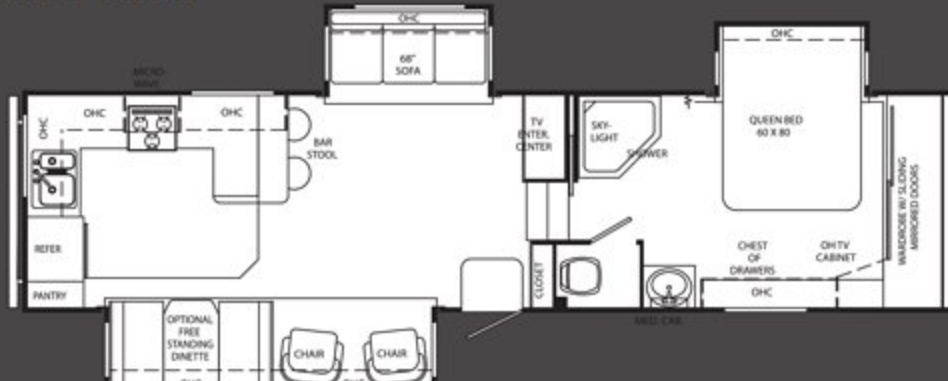
29RKD LXFW



31BHT LXFW



32RKT LXFW



32SKT LXFW



SAVOY LXTT

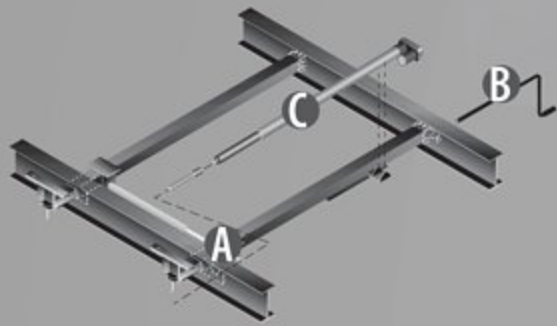
SAVOY LXFW





**SLIDE-OUT:**

When you purchase a Holiday Rambler, you can be sure the slide-out boxes are some of the strongest and most reliable you'll find anywhere. In addition, the actuator has a mechanical room lock that is built in, and there are adjustable built-in stops for in and out positions.



- A** Bearing packs are bolted in 4 places, locking the gear and rack in place.
- B** A manual crank and extension rod comes standard with every unit, to serve as override if needed.
- C** Actuator motor is positioned to provide smoother movement and reduce twisting on the slide-out room.

**SAVOY LE SPECIFICATIONS**

	LETT	LETT	LETT	LETT	LETT	LETT	LE FW	LE FW	LE FW
	26RKS	28SKS	29CKS	29FLS	30CKS	30FKS	25RLS	27BHS	27RLS
<b>Weights*</b>									
Gross Vehicle Weight Rating	7,800	7,800	9,000	9,000	10,100	10,100	10,100	10,100	10,100
Hitch Weight	TBD	485	580	970	TBD	TBD	850	1,530	1,470
Axle(s) Weight	3,500	3,500	3,500	5,200	5,200	5,200	5,200	5,200	5,200
Unloaded Vehicle Weight	TBD	5,370	6,200	6,260	TBD	TBD	6,770	6,860	7,130
Net carrying Capacity (NCC)	TBD	2,430	2,800	2,740	TBD	TBD	3,330	3,240	2,970
Tire Size and load Range	15" C	15" C	15" D	15" D	15" D	15" D	15" D	15" D	15" D
<b>Measurements</b>									
Overall Length	TBD	30' 8"	31' 8"	31' 8"	TBD	32' 10"	27' 5"	29' 10"	29' 10"
Overall Height (Including A/C)	TBD	10' 5"	10' 11"	10' 11"	TBD	TBD	12' 3"	12' 1"	12' 1"
Exterior Width	98"	98"	98"	98"	98"	98"	98"	98"	98"
Awning Length	20'	17'	17'	21'	18'	17'	13'	15'	14'
<b>Tank Capacities (Gal.)</b>									
Water Heater	6	6	6	6	6	6	6	6	6
Grey Tank	40	40	40	40	40	30/40	30/40	40/40	40/40
Black Tank	40	40	40	40	40	40	40	40	40
Fresh Tank	40	40	40	40	40	40	40	40	40
L.P. Tank	30 (2)	30 (2)	30 (2)	30 (2)	30 (2)	30 (2)	30 (2)	30 (2)	30 (2)

\* Weights may vary by options.

\*\* Variances in the fabrication and installation of the tanks may cause the actual "usable capacity" to be greater or less than the capacities designated above.

\*\*\* Actual filled LP capacity is 80% of listing due to safety shut-off required on tank.



- 1** Super Lube Wheel Bearings Easier packing of your wheel bearings.
- 2** 15" Radial Tires Notice the word "radial" (no bias plys here).
- 3** ABS Molded Fender Skirt One-piece for a great look.
- 4** Entry Step Mounted to Frame Low first step, and the mounting bracket is welded to the frame.
- 5** Heated, Insulated and Enclosed Underbelly, Including All Tanks Enjoy your Savoy longer in the fall and earlier in the spring.
- 6** Oversized Pass-Through Exterior Storage Check out all the room. (Where Applicable)
- 7** I-Beam Chassis with Powder Coating Strong foundation helps prevent rust and corrosion.
- 8** Electric Awning with better hardware and great dependability, optional.
- 9** 2-1/2" Fully Insulated Bathroom Deck Compare here — even the bathroom floor is insulated (not all are)! (LX FW only)
- 10** Steel Frame Floor for Superior Strength We use only steel for superior strength — no wood or aluminum like the rest.
- 11** 5/8" One-Piece Sturdi-Wood Decking No seams and superior strength.
- 12** Radius Entry Door No square doors here.
- 13** Upgraded Residential Carpet and Padding Check out the cushion of this pad.
- 14** UV Resistant Fiberglass Exterior Upgraded shine vs. other types.
- 15** Dark-Tinted Windows Look how these will keep your unit cool in the summer and protect your upholstery.
- 16** Fiberglass Insulation under Bedroom Floor More peace of mind — no corners cut where you can't see.
- 17** Lamiplast Underbelly Material Enclosed underbelly and more aerodynamic.
- 18** Welded Aluminum Studs Fully welded and engineered for extra strength and lighter weight.
- 19** 1/8" Luaun Wallboard Complete coverage for more strength.
- 20** Solid Block Foam Insulation No insulation voids here.
- 21** Decorative Interior Wallboard Great look and easy to clean.
- 22** Remote-Controlled Carrier Air Conditioner (Fully Programmable) Residential — adjust the temperature from anywhere inside coach.
- 23** One-Piece Roof Membrane Low maintenance.
- 24** 3/8" Sturdi-Wood Roof Decking
- 25** Hand-Stuffed Fiberglass Roof Insulation Even more insulation for extended living.
- 26** 16" On-Center Roof Rafters Residential — just like your home.
- 27** One-Piece Gel Coat Fiberglass Cap Sleek and aerodynamic for improved towability
- 28** Extended Kingpin for Short-Bed Pickups.
- 29** Split Baggage Doors for Easier Access Get to your belongings even while you're hooked up to your tow vehicle!

### SAVOY LX SPECIFICATIONS

LXTT	LXTT	LXTT	LXTT	LXTT	LXTT	LXTT	LXTT	LXTT	LX FW	LX FW	LX FW	LX FW	LX FW
28RBS	30BHD	30RLS	32FKD	32RBS	32RKD	33BHD	33FLD	34SKD	28RLD	29RKD	31BHT	32RKT	32SKT
10,100	10,100	10,100	10,100	10,100	10,100	10,100	10,100	10,100	12,400	12,400	12,400	12,400	12,400
700	740	695	1,215	TBD	1,000	TBD	TBD	930	TBD	TBD	TBD	TBD	TBD
5,200	5,200	5,200	5,200	5,200	5,200	5,200	5,200	5,200	5,200	5,200	5,200	5,200	5,200
6,570	7,370	6,930	7,600	TBD	7,580	TBD	TBD	7,800	TBD	TBD	TBD	TBD	TBD
3,530	2,730	3,170	2,500	TBD	2,520	TBD	TBD	2,300	TBD	TBD	TBD	TBD	TBD
15" D	15" D	15" D	15" D	15" D	15" D	15" D	15" D	15" D	15" D	15" D	15" D	15" D	15" D
30' 10"	33'	32' 5"	33' 6"	TBD	34' 1"	TBD	TBD	35' 1"	TBD	TBD	TBD	34'	34'
11'	11'	11'	11' 1"	TBD	11'	TBD	TBD	12' 1"	TBD	TBD	TBD	TBD	TBD
98"	98"	98"	98"	98"	98"	98"	98"	98"	98"	98"	98	98	98
17'	17'	19'	17'	TBD	20'	TBD	TBD	TBD	TBD	TBD	TBD	TBD	15'
6	6	6	6	6	6	6	6	6	6	6	6	6	6
40/40	40/40	40/40	40/40	40/40	40/40	40/40	40/40	40/40	40/40	40/40	40/40	40/40	40/40
40	40	40	40	40	40	40	40	40	40	40	40	40	40
50	50	50	50	50	50	50	50	50	50	50	50	50	50
30 (2)	30 (2)	30 (2)	30 (2)	30 (2)	30 (2)	30 (2)	30 (2)	30 (2)	30 (2)	30 (2)	30 (2)	30 (2)	30 (2)

Due to the large variety of options and floorplan arrangements available to our customers, actual weights for each unit can differ significantly. Holiday Rambler provides a weight sticker on each unit we produce which includes that unit's tank capacities and approximate weight. Consult your local Holiday Rambler dealer for unit availability and further information.

The information printed in this brochure reflects product design, fabrication, and component parts at the date of printing. The manufacturer reserves the right, at any time, to make changes in product design or material or component specifications as its sole option, without notice. This includes the substitution of components of a different brand or trade name, which will result in comparable performance. All information printed in this brochure is subject to change after the date of printing. Some features shown or mentioned in this brochure are optional and may only be available in selected floorplans.

Photographs may show props or decorations that are not standard equipment on Holiday Rambler models. Holiday Rambler, the HR logo and its design, are registered trademarks. All other products and company names are trademarks and/or registered trademarks of their respective holders.

While the color of the towable's exterior and the interior fabrics depicted in this sales brochure are fair and reasonable depictions, the colors depicted may not be an exact match of the actual colors because of the variances in photo-processing and variances caused by inserting the photographs within the sales brochure. Due to product improvements, changes during the model year and/or transcription errors that may occur, information represented within this brochure may not be accurate at the time of your purchase. If certain information is significant to your purchasing decision, please confirm the information with your dealer prior to submitting your order.

The actual overall length of the recreational vehicle may differ from that indicated in the brochure due to variances in the manufacturing process and/or installed components. The actual length may be greater or less than that indicated.

Component part and appliance manufacturers issue limited warranties covering those portions of the recreational vehicle not covered by the Limited Warranties issued by Monaco Coach Corporation. To learn which specific component parts and appliances are excluded from the Limited Warranties issued by Monaco Coach Corporation, please contact your selling dealership or Monaco Coach Corporation directly, or review the warranty packet inside the recreational vehicle.





Due to continuous product improvement, please see the website for the latest in standards and options, specifications, and technical data. *Go to [www.holiday Rambler.com](http://www.holiday Rambler.com).*

LEFT  
LEFW  
LXTT  
LXFW

### BODY CONSTRUCTION: FEATURES

• 2" Laminated Sidewall Construction with Welded Tubular Aluminum Studs	x	x	x	x
• I-Beam Frame	x	x	x	x
• Smooth White Fiberglass Exterior Walls	x	x	x	x
• Front Molded Fiberglass Cap			x	x
• Pass-Thru Storage (Where Applicable)	x	x	x	x
• Rain Gutters with Down Spouts	x	x	x	x
• 5/8" Sturdi-wood Flooring	x	x	x	x
• 3/8" Full Walk-on Roof Decking	x	x	x	x
• 5" Roof Trusses, 16" on Center	x	x	x	x
• Flat Floor Slide Room w/ Manual Backup (N/A: 26RKS, 28SKS)	x	x	x	x
• Seamless One-Piece Exterior Roof Membrane	x	x	x	x
• Heated and Enclosed Underbelly	x	x	x	x
• Stylized 15" Radial White Sport Wheels with Chrome Center Hub Cap	x	x	x	x
• Extended Hitch Pin		x		x
• Stabilizer Jacks (Rear)	x		x	x
• Front Electric Jacks (FW)		x		x
• Spare Tire With Sport Wheel and Vinyl Tire Cover Mounted on Bumper			x	x

### OPTIONS

• Spare Tire With Sport Wheel and Vinyl Tire Cover Mounted on Bumper	x	x		
• Roof Ladder	x	x	x	x
• Shock Absorbers			x	x
• Aluminum Wheels			x	x
• Full LP Bottle Cover			x	
• Lighted Power Hitch Jack			x	

### APPLIANCES: FEATURES

• 6 cu. ft. Refrigerator	x	x	x	x
• 6 Panel Refrigerator Insert	x	x	x	x
• Microwave with Touch Control	x	x	x	x
• Wedgewood High Output 3-Burner Range with Oven	x	x	x	x
• Home Theater Surround Sound System	x	x	x	x
• Systems Monitor Panel	x	x	x	x
• Built-in Wood Knife Holder Behind Stove	x	x	x	x

LEFT  
LEFW  
LXTT  
LXFW

### OPTIONS

• 8 cu. ft. Refrigerator		x	x	x
• 10 cu. ft. Refrigerator			x	x
• Bi-fold Range Cover	x	x	x	x
• 19" LCD Color TV	x			
• 22" LCD Color TV		x	x	
• 26" LCD Color TV with HD Tuner and Mounting Bracket				x
• Washer Dryer Prep (LX TT 32FKD, 34SKD)				x
• Fireplace with Decorative Wood Frame (32SKT)				x

### INTERIORS: FEATURES

• Golden Select	x	x	x	x
• Slide-Out Room Wood Fascia with Decorative Insert	x	x	x	x
• Lower Bed Storage, Bed Lifts Easily with Gas Struts	x	x	x	x
• TV Shelf in Bedroom	x	x	x	
• TV Cabinet in Bedroom Overhead				x
• Kitchen Base Cabinets with Sliding Storage Tray(s)	x	x		
• Linoleum in Kitchen, Bath and Entry	x	x	x	x
• Medicine Cabinet with Mirror in Bathroom	x	x	x	x
• Laundry Hamper Chute (N/A: 32FKD, 32RKD, 34SKD)			x	x

### OPTIONS

• Decors: Meadow, Yorktown Ginger, Mountain Redwood	x	x	x	x
• Kitchen Countertop Extension (N/A: 32RBS, 32FKD, 33BHD, 31SKT, 32SKT)			x	x
• Designer Accessory Package			x	x

### FURNITURE: FEATURES

• Queen Bed	x	x		x
• Queen Bed with Nightstands (28RBS, 30BHD, 30RLS, 33BHD)				x
• Jack Knife Sleeper Sofa (N/A: 25RSL)	x	x	x	x
• Wood Booth Dinette	x	x	x	x
• Swivel Barrel Chair (2) (Where Applicable) (N/A: 31BHT, 28RBS, 30BHD, 32RBS, 33BHD, 27BHS, 26RKS, 28SKS, 30CKS)	x	x	x	x
• Two Bar Stools in Kitchen (32RKT)				x

### OPTIONS

• Euro Chairs with Ottoman (Where Applicable) (N/A: 31BHT, 28RBS, 30BHD, 32RBS, 33BHD)			x	x
• Hide-A-Bed Sofa			x	x
• Free-Standing Dinette Table with Four Wood Chairs (N/A: 26RKS, 28SKS)	x	x	x	x
• High Back Desk Chair (31SKT, 32SKT Only)				x



LETT  
LEFW  
LXTT  
LXFW**ELECTRICAL SYSTEMS AND LIGHTS: FEATURES**

• Electrical Management System (30 AMP/12V 55AMP Converter)	x	x	x	x
• Cable TV/Satellite Hook-up	x	x	x	x
• Exterior Cable or Satellite Receptacle	x	x	x	x
• Battery Disconnect and Battery Box				x

**OPTIONS**

• Solar Prep			x	x
• 50 AMP Service (32RKT, 32SKT, 32FKD, 34SKD)			x	x
• 50 AMP Service with Second A/C Prep (32RKT, 32SKT, 32RBS, 32FKD, 32RKD, 33FLD, 33BHD, 34SKD)			x	x

**PLUMBING AND LP SYSTEMS: FEATURES**

• Deep Double Bowl Kitchen Sink with High Profile Double Handle Faucet	x	x	x	x
• 6-Gallon L.P. Gas/Electric Water Heater with Electronic Ignition	x	x	x	x
• Extra Large Lavatory with Double Handle Faucet	x	x	x	x
• Outside Shower	x	x	x	x
• Water System Winterization Kit	x	x		
• ABS Tub with Surround and Glass Door (30BHD, 27BHS)	x	x	x	
• ABS Neo-Angle Shower with One-Piece Surround and Glass Door (25RLS, 27RLS, 28RBS, 30RLS, 32RBS, 32FKD, 32RKD, 33BHD, 34SKD Only)			x	x
• Satin Nickel Shower Fixtures and Faucet	x	x	x	x
• Two 30 lb. L.P. Tanks with Automatic Changeover	x	x	x	x
• Water Heater By-pass Kit	x	x	x	x
• Centralized Water Management System			x	x
• No-Fuss Holding Tank Rinsing System				x

**OPTIONS**

• No-Fuss Holding Tank Rinsing System				x
• 10 Gal. L.P. Gas/Electric Water Heater with Electronic Ignition			x	x

**HEATING, VENTS AND AIR CONDITIONING: FEATURES**

• 30M BTU Hydroflame Electronic Ignition Furnace	x	x	x	x
• One Carrier Central 13,500 BTU Rooftop Air Conditioner with Remote Control	x	x	x	x
• Forced Air Heating System	x	x	x	x

LETT  
LEFW  
LXTT  
LXFW**OPTIONS**

• One Carrier 15,000 BTU Central A/C with Remote Control	x	x	x	x
• Second Carrier 13,500 BTU Central A/C with Remote Control (32RBS, 32FDK, 32RKD, 33FLD, 33BHD, 34SKD, 32RKT, 32SKT)			x	x

**WINDOWS AND DOORS: FEATURES**

• Tinted Skylight in Bathroom	x	x	x	x
• Swing-Out Entry Door Handle			x	x
• Front Window with Stone Guard/Awning (32RBS, 32RKD, 34SKD)				x
• Tinted Safety Glass Windows	x	x		x

**OPTIONS**

• Swing-Out Entry Door Handle	x	x		
• Ceiling Fan				x
• Main Electric Patio Awning	x	x	x	x

**WINDOW TREATMENTS: FEATURES**

• Mini Blinds in Living Area and Bedroom	x	x		
• Pleated Day/Blackout Shades in Living Area and Bedroom			x	x

**ADVANTAGE PACKAGE**

• Heated, Enclosed and Insulated Underbelly	x	x	x	
• Glass Shower Door			x	x
• Tinted Windows	x	x	x	
• Centralized Exterior Water Management Center with Outside Shower	x	x	x	
• Built-In Wood Knife Holder	x	x	x	
• Slide-Out Room Wood Fascia with Decorative Insert	x	x	x	x
• Carrier 13,500 BTU Air Conditioner with Remote Control	x	x	x	x
• Microwave with Touch Control	x	x	x	x
• Two 30 lb. L.P. Tanks with Automatic Changeover and Full LP Bottle Cover			x	
• Color Coordinated Quilted Bedspread			x	
• ABS Tub with Surround			x	
• Tinted Skylight in Bathroom			x	
• Water Heater By-pass Kit			x	



HOLIDAY RAMBLER®

*This is Living®*

## BEING DIFFERENT MAKES ALL THE DIFFERENCE.

Take a closer look, and you'll discover that Holiday Rambler, a brand of Monaco Coach Corporation, gives you more industry "bests" than any other RV manufacturer. The convenience of our 350 service centers. The value of Monaco Financial Services. And the online support of [holidayrambler.com](http://holidayrambler.com). At Holiday Rambler, we've built our reputation by listening to you — and answering to you. And that's the difference that's made us the best.

## WARRANTIES

12 MONTH basic limited warranty

2 YEAR limited warranty on steel frame structure

PRESIDENTIAL SUITE

PRESIDENTIAL

ALUMASCAPE SUITE

ALUMASCAPE

NEXT LEVEL

SAVOY LE/LX

MINTARO

BLACK DIAMOND