



 CAMELOT™
2009

"Every day, we're charting new territory."



MONACO®

DRIVING YOUR DREAM.





 CAMELOT™
2009

"Every day, we're charting new territory."



MONACO®

DRIVING YOUR DREAM.





YOU'RE HOME.

The 2009 Camelot is loaded with more top-of-the-line features than ever before. In the cockpit you'll find an all-new eagle-burl dash with a color rear vision system and optional GPS. Oil rubbed bronze fixtures and polished solid surface countertops take sophisticated styling to new heights. And the new optional central vacuum with a toe-kick vacuum in the pantry provides the ultimate in convenience. The 42KFQ model shown here features a huge 37" LCD TV in the living room hutch.





YOU'RE HOME.

The 2009 Camelot is loaded with more top-of-the-line features than ever before. In the cockpit you'll find an all-new eagle-burl dash with a color rear vision system and optional GPS. Oil rubbed bronze fixtures and polished solid surface countertops take sophisticated styling to new heights. And the new optional central vacuum with a toe-kick vacuum in the pantry provides the ultimate in convenience. The 42KFQ model shown here features a huge 37" LCD TV in the living room hutch.





42KFK | STAINED CHERRY | POMEGRANATE



CAMELOT | 



MONACO®

DRIVING YOUR DREAM.

Years ago, you realized the best part about the road is that it never ends. There's always a scenic detour, a new town to explore or a new landmark to see for yourselves. Charting new territory is what the Camelot is all about. It's the confidence to get off the beaten path — and the comfort that follows you there. Even if it's a familiar destination, the journey's never exactly the same. For one simple reason. You're in the Camelot.





42KFK | STAINED CHERRY | POMEGRANATE



CAMELOT™ | 



MONACO®

DRIVING YOUR DREAM.

Years ago, you realized the best part about the road is that it never ends. There's always a scenic detour, a new town to explore or a new landmark to see for yourselves. Charting new territory is what the Camelot is all about. It's the confidence to get off the beaten path — and the comfort that follows you there. Even if it's a familiar destination, the journey's never exactly the same. For one simple reason. You're in the Camelot.





IT'S ALL ABOUT YOU.

Each thoughtful detail is designed to make your life on the road more enjoyable. The spacious bedroom and bathroom feature beautiful decorative touches and all the comforts of home. A king-size bed, shown here, comes standard on the 42-foot floorplans, and an optional Select Comfort air mattress allows you to customize the firmness for a perfect night's sleep.

A 26-inch LCD TV is now standard in the bedroom, and a new DVD player with IR repeater makes a great option.





IT'S ALL ABOUT YOU.

Each thoughtful detail is designed to make your life on the road more enjoyable. The spacious bedroom and bathroom feature beautiful decorative touches and all the comforts of home. A king-size bed, shown here, comes standard on the 42-foot floorplans, and an optional Select Comfort air mattress allows you to customize the firmness for a perfect night's sleep.

A 26-inch LCD TV is now standard in the bedroom, and a new DVD player with IR repeater makes a great option.

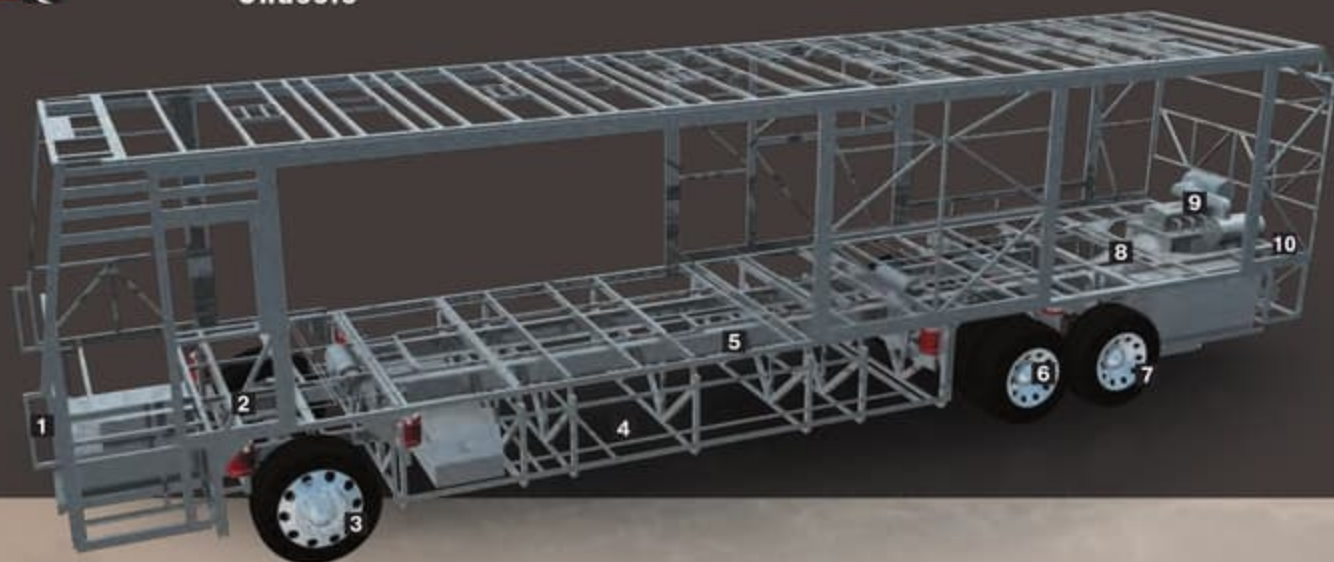




42KFO | STAINED CHERRY | POMEGRANATE



42KFK | STAINED CHERRY | POMEGRANATE



ROADMASTER RR10S—SERIES CHASSIS Available on the 42DSQ, 42PDQ, 42KFQ
ROADMASTER RR8S—SERIES CHASSIS Available on the 38PDQ, 40QDP

- 1** Equipped with a steel firewall and steel stepwell for added safety.
- 2** Three monitored leveling sensors (two in the rear, one in the front) continually adjust the air pressure within each air bag to maintain a level ride and eliminate nosediving, weight transfer, and floating on curved roads.
- 3** Automatic Traction Control (ATC) eliminates wheel slippage in slick conditions and heightens control. The Anti-Lock Braking System (ABS), with front disc brakes and rear drum brakes, gives you superior stopping power, especially on steep grades. Together, these sophisticated systems offer the very best safety on the road.
- 4** Our exclusive raised rail design provides for larger full pass-through storage bays with flush floors.
- 5** Frame rails are constructed of 3-1/2" by 6-1/4" by 3/8" 100,000 PSI steel for greater strength; a side-mounted aluminum radiator and intercooler reduce weight, won't rust, and deliver better heat transfer than steel cooling components.
- 6** The Cushion Air Glide suspension features 10 gas-charged shocks and 10 air bags, 8 of which are outboard mounted (RR10S). The RR8S-Series chassis features 8 gas-charged shocks and 8 outboard-mounted air bags.



- 7** Goodyear tires 295/80R/22.5
- 8** Allison® 3000 MH 6-Speed World Transmission with electronic shifter. Our exclusive use of synthetic transmission fluid allows for up to three-year maintenance intervals for the Allison® transmission.
- 9** Cummins® ISL 425 HP diesel engine.
- 10** A 10,000 lb. tow hitch rating is the highest in its class. Prewired for supplemental braking system that works with your tow vehicle.

CUMMINS® ISL 425

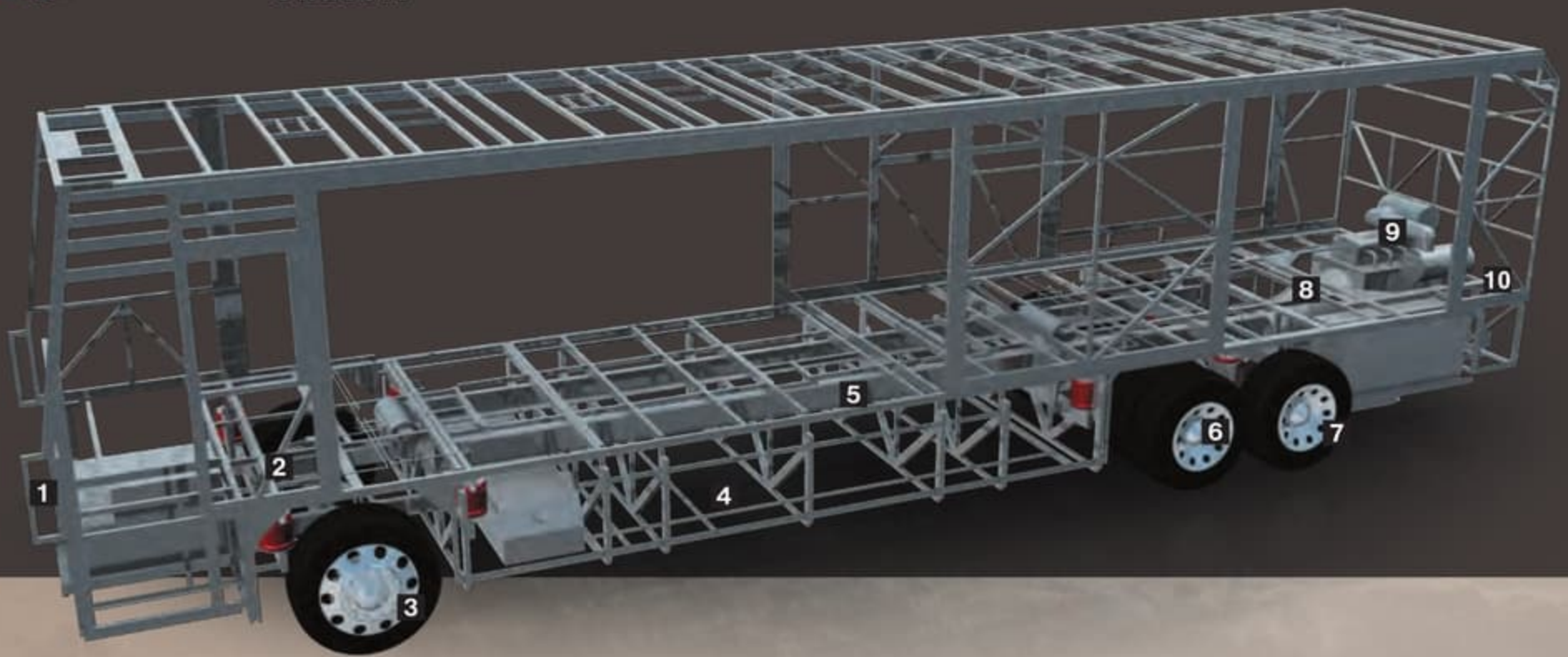
For 2009, the Camelot boasts a powerful new standard engine — the Cummins® ISL 425 HP with 1,200 torque. One word says it all. Vroom.



ALL WITHIN REACH.

Camelot's roomy storage bays feature side-swing doors and full pass-through compartments that are ideal for larger items. An optional slide-out tray makes everything easily accessible with no awkward bending or reaching.





ROADMASTER RR10S—SERIES CHASSIS Available on the 42DSQ, 42PDQ, 42KFQ
ROADMASTER RR8S—SERIES CHASSIS Available on the 38PDQ, 40QDP

- 1** Equipped with a steel firewall and steel stepwell for added safety.
- 2** Three monitored leveling sensors (two in the rear, one in the front) continually adjust the air pressure within each air bag to maintain a level ride and eliminate nosediving, weight transfer, and floating on curved roads.
- 3** Automatic Traction Control (ATC) eliminates wheel slippage in slick conditions and heightens control. The Anti-Lock Braking System (ABS), with front disc brakes and rear drum brakes, gives you superior stopping power, especially on steep grades. Together, these sophisticated systems offer the very best safety on the road.
- 4** Our exclusive raised rail design provides for larger full pass-through storage bays with flush floors.
- 5** Frame rails are constructed of 3-1/2" by 6-1/4" by 3/8" 100,000 PSI steel for greater strength; a side-mounted aluminum radiator and intercooler reduce weight, won't rust, and deliver better heat transfer than steel cooling components.
- 6** The Cushion Air Glide suspension features 10 gas-charged shocks and 10 air bags, 8 of which are outboard mounted (RR10S). The RR8S-Series chassis features 8 gas-charged shocks and 8 outboard-mounted air bags.



- 7** Goodyear tires 295/80R/22.5
- 8** Allison® 3000 MH 6-Speed World Transmission with electronic shifter. Our exclusive use of synthetic transmission fluid allows for up to three-year maintenance intervals for the Allison® transmission.
- 9** Cummins® ISL 425 HP diesel engine.
- 10** A 10,000 lb. tow hitch rating is the highest in its class. Prewired for supplemental braking system that works with your tow vehicle.

CUMMINS® ISL 425

For 2009, the Camelot boasts a powerful new standard engine — the Cummins® ISL 425 HP with 1,200 torque. One word says it all. Vroom.



ALL WITHIN REACH.

Camelot's roomy storage bays feature side-swing doors and full pass-through compartments that are ideal for larger items. An optional slide-out tray makes everything easily accessible with no awkward bending or reaching.



THE DIFFERENCE IS IN THE DETAILS.

Take the wheel of a luxury motorhome, and you're taking the wheel of the chassis it rides on. That's why the Camelot rides exclusively on a Roadmaster chassis that is custom built to deliver the very best diesel motorhome experience. Roadmaster's construction utilizes the most advanced design and engineering to distribute stress evenly throughout the entire chassis, reducing the possibility of torque or twisting and increasing durability and reliability. In addition, the anti-lock braking system with front disc brakes offers increased safety. It's the ultimate foundation for a luxury ride.

MULTIPLEX WIRING

Multiplex wiring, used throughout the coach, replaces cumbersome bundles of wire with separate modules. These modules communicate via a single wire, making servicing easier and reducing the overall weight of the RV. A service technician can simply hook up a laptop directly to the modules for easy troubleshooting.



WARRANTIES

12 MONTH/24,000 MILE basic limited warranty

5 YEAR/50,000 MILE limited warranty on aluminum or steel frame structure of sidewall, roof, front and rear cap

3 YEAR/50,000 MILE limited warranty on Roadmaster chassis

See owner's manual for complete details.

9-LAYER MOLDED FIBERGLASS ALL-SEASON FOAM INSULATED ROOF

(top to bottom)

- One-piece 1/4" fiberglass roof is crowned for easy water runoff
- Luaun backing
- 2-1/2" thick tapered bead foam insulation
- 1-1/2" x 3" aluminum I-beam superstructure on 16" centers filled with 3" fiberglass insulation
- Vapor barrier
- Structure foam provides added thermal barrier
- 1/2" bead foam insulation
- Foam padding for extra insulation
- Easy-to-clean padded vinyl ceiling



5-LAYER LAMINATED GEL COAT FIBERGLASS SIDEWALLS

(left to right)

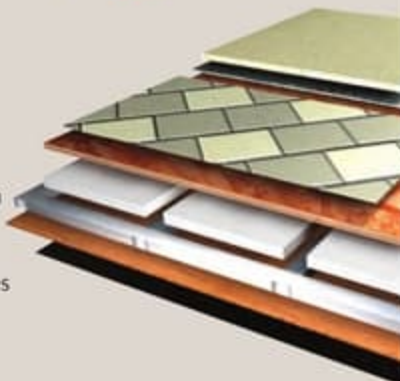
- Wallpaper
- 1/8" luaun
- 1-1/2" x 1-1/2" square tubular aluminum frame
- High-performance thermal insulation
- High-gloss gel coat fiberglass exterior



6-LAYER FLOORING

(top to bottom)

- Carpet pad and carpeting or tile
- Structurwood™ for added reliability
- High-performance thermal insulation
- 1-1/2" x 1-1/2" square tubular frame
- 1/8" luaun
- Waterproof Darco underbelly provides moisture barrier



THE DIFFERENCE IS IN THE DETAILS.

Take the wheel of a luxury motorhome, and you're taking the wheel of the chassis it rides on. That's why the Camelot rides exclusively on a Roadmaster chassis that is custom built to deliver the very best diesel motorhome experience. Roadmaster's construction utilizes the most advanced design and engineering to distribute stress evenly throughout the entire chassis, reducing the possibility of torque or twisting and increasing durability and reliability. In addition, the anti-lock braking system with front disc brakes offers increased safety. It's the ultimate foundation for a luxury ride.

MULTIPLEX WIRING

Multiplex wiring, used throughout the coach, replaces cumbersome bundles of wire with separate modules. These modules communicate via a single wire, making servicing easier and reducing the overall weight of the RV. A service technician can simply hook up a laptop directly to the modules for easy troubleshooting.



WARRANTIES

12 MONTH/24,000 MILE basic limited warranty

5 YEAR/50,000 MILE limited warranty on aluminum or steel frame structure of sidewall, roof, front and rear cap

3 YEAR/50,000 MILE limited warranty on Roadmaster chassis

See owner's manual for complete details.

9-LAYER MOLDED FIBERGLASS ALL-SEASON FOAM INSULATED ROOF

(top to bottom)

- One-piece 1/4" fiberglass roof is crowned for easy water runoff
- Luaun backing
- 2-1/2" thick tapered bead foam insulation
- 1-1/2" x 3" aluminum I-beam superstructure on 16" centers filled with 3" fiberglass insulation
- Vapor barrier
- Structure foam provides added thermal barrier
- 1/2" bead foam insulation
- Foam padding for extra insulation
- Easy-to-clean padded vinyl ceiling



5-LAYER LAMINATED GEL COAT FIBERGLASS SIDEWALLS

(left to right)

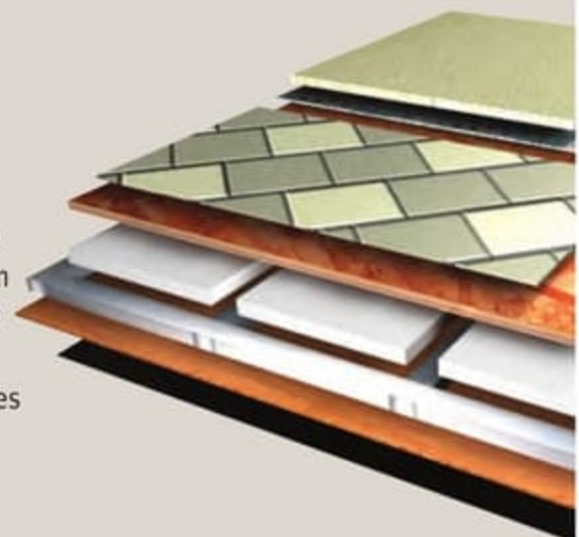
- Wallpaper
- 1/8" luaun
- 1-1/2" x 1-1/2" square tubular aluminum frame
- High-performance thermal insulation
- High-gloss gel coat fiberglass exterior



6-LAYER FLOORING

(top to bottom)

- Carpet pad and carpeting or tile
- Structurwood™ for added reliability
- High-performance thermal insulation
- 1-1/2" x 1-1/2" square tubular frame
- 1/8" luaun
- Waterproof Darco underbelly provides moisture barrier



STAINED OAK



NATURAL OAK



STAINED CHERRY



GOLDEN TWILIGHT II



JAMOCHA CREAM III



- Carpet A
- Dinette B
- Sofa C
- Bedspread D

A	B	C	D

STAINED OAK



NATURAL OAK



STAINED CHERRY



GOLDEN TWILIGHT II



JAMOCHA CREAM III



- Carpet A
- Dinette B
- Sofa C
- Bedspread D

A	B	C	D

NATURAL CHERRY



SPICED MAPLE



NOW FOR THE HARD PART.

Choosing the Camelot was easy. Now, it's time to make it your own. For 2009, our designers are pleased to present a stunning array of standard and optional decors and cabinetry styles. But don't worry, even if you end up flipping a coin, you'll both win.

POMEGRANATE



SAGEBRUSH



Note: Colors depicted are a reasonable representation though they may not be an exact match of the actual colors due to variances in processing and production. See your dealer for actual fabric and paint chip samples.

EXTERIOR COLORS, FABRICS AND WOODS | 

NATURAL CHERRY



SPICED MAPLE



NOW FOR THE HARD PART.

Choosing the Camelot was easy. Now, it's time to make it your own. For 2009, our designers are pleased to present a stunning array of standard and optional decors and cabinetry styles. But don't worry, even if you end up flipping a coin, you'll both win.

POMEGRANATE



SAGEBRUSH

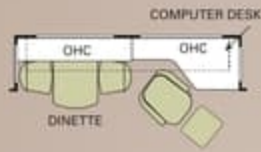


Note: Colors depicted are a reasonable representation though they may not be an exact match of the actual colors due to variances in processing and production. See your dealer for actual fabric and paint chip samples.

THE VIEW FROM ABOVE.

The 2009 Camelot offers something for everyone, with overall lengths ranging from 38 feet to nearly 43 feet. All floorplans feature quad slide-outs for spacious luxury, and just a few of the points of interest include a private bath on the 42DSQ, the 37-inch wall-mounted LCD TV on the 42KFQ and king beds on all of the 42-foot models.

FURNITURE OPTIONS:



■ TILE ■ CARPET



EMERGENCY ASSISTANCE
SALES • TECH • ROADSIDE

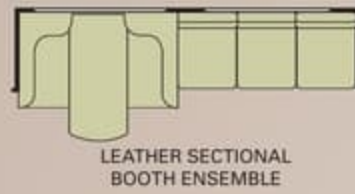
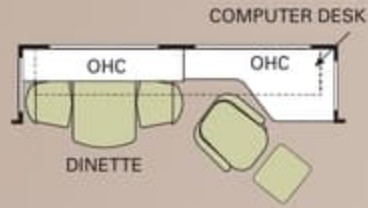
WE'RE HERE. ANYTIME, EVERY TIME.

- Reach us anytime — literally — via our live customer support line.
- Drive in to one of our 350 Service Centers.
- Enjoy the first year free when you enroll in our Owner Advantage Roadside Assistance Program.
- See where it all begins with a tour of one of our facilities in Indiana or Oregon. Call 1-800-650-7337 or 1-800-634-0855 to find out more.

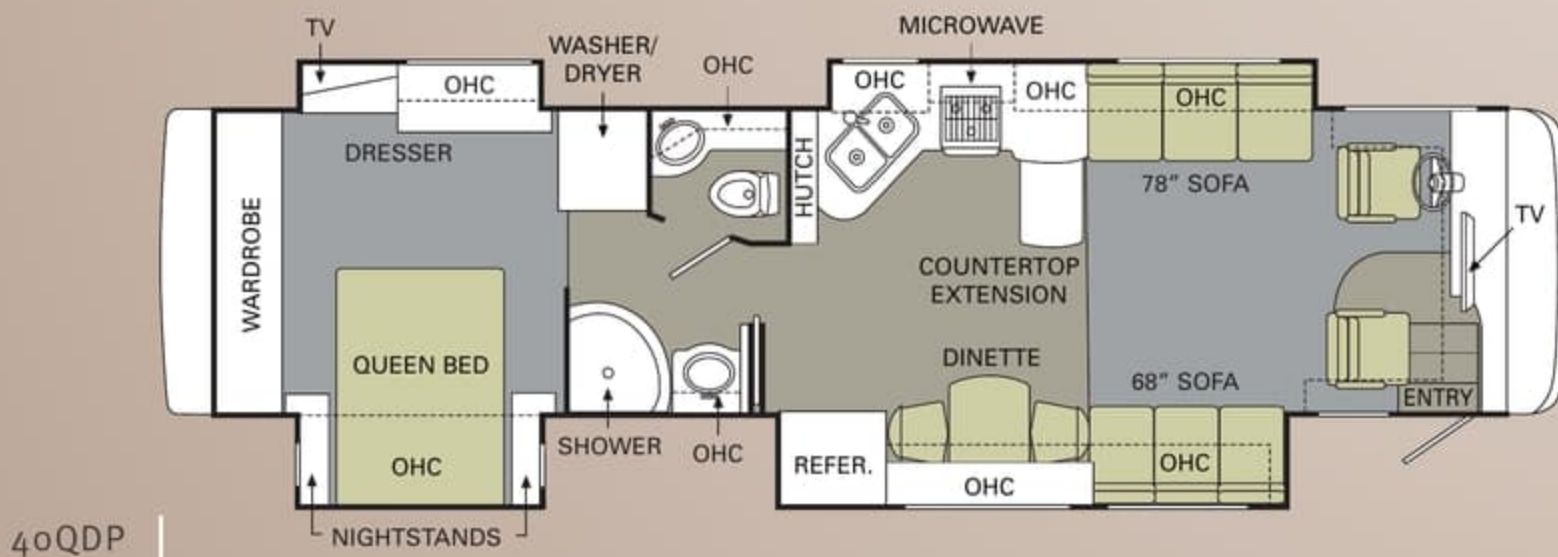
THE VIEW FROM ABOVE.

The 2009 Camelot offers something for everyone, with overall lengths ranging from 38 feet to nearly 43 feet. All floorplans feature quad slide-outs for spacious luxury, and just a few of the points of interest include a private bath on the 42DSQ, the 37-inch wall-mounted LCD TV on the 42KFQ and king beds on all of the 42-foot models.

FURNITURE OPTIONS:



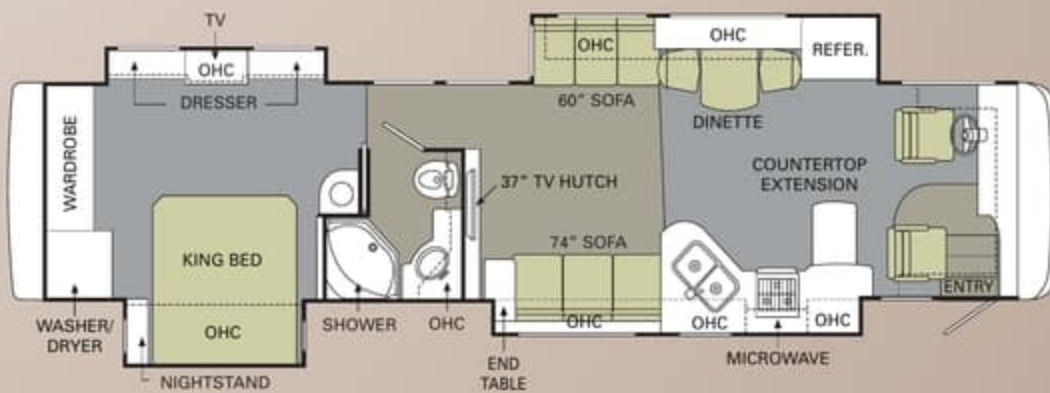
TILE CARPET



EMERGENCY ASSISTANCE
SALES • TECH • ROADSIDE

WE'RE HERE. ANYTIME, EVERY TIME.

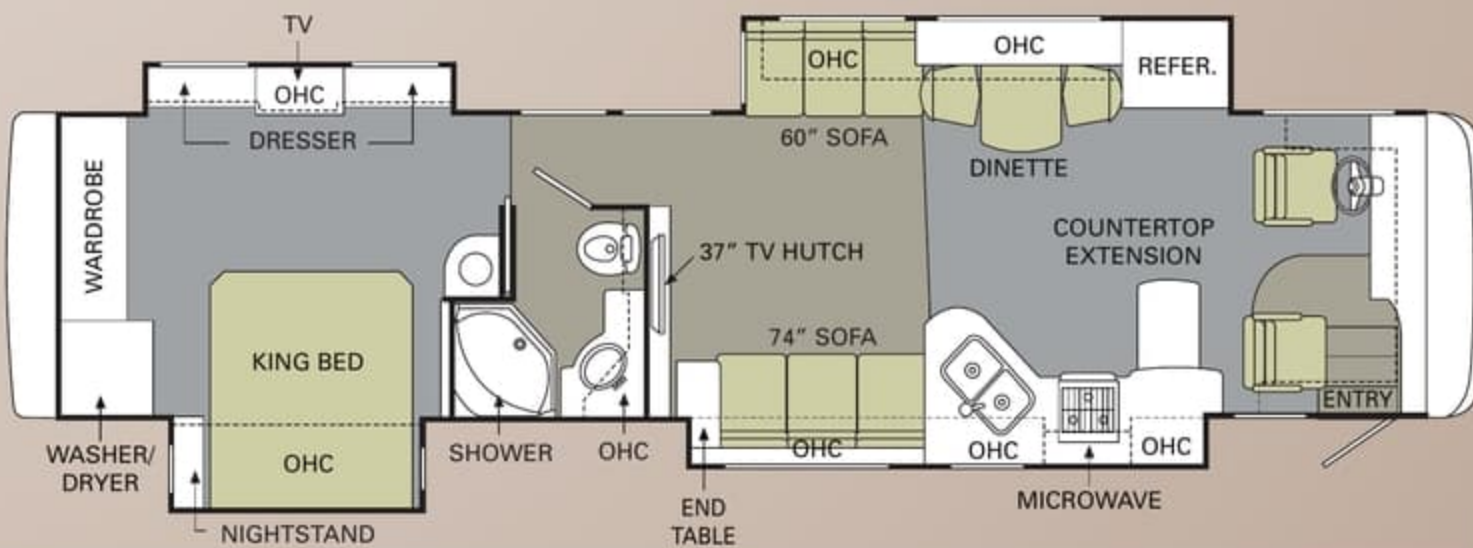
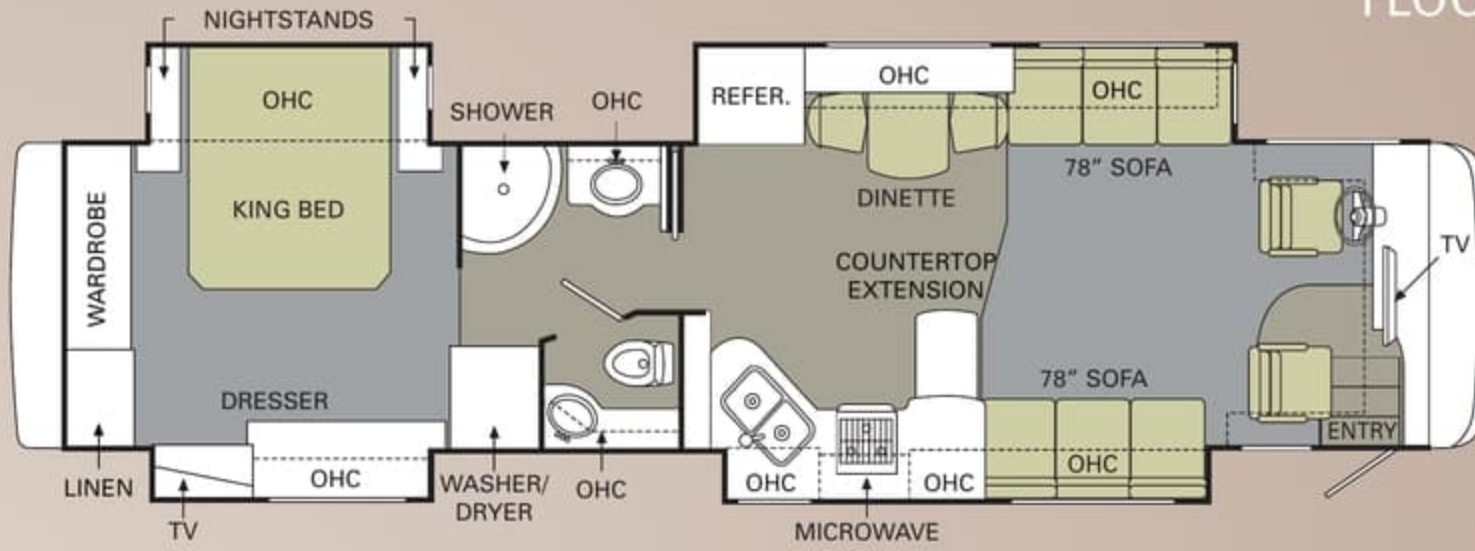
- Reach us anytime — literally — via our live customer support line.
- Drive in to one of our 350 Service Centers.
- Enjoy the first year free when you enroll in our Owner Advantage Roadside Assistance Program.
- See where it all begins with a tour of one of our facilities in Indiana or Oregon. Call 1-800-650-7337 or 1-800-634-0855 to find out more.



ALL ROADS LEAD TO WWW.MONACOCOACH.COM.

Wherever the road takes you, you're never more than a click away from your friends at Monaco. Just go to www.monacocoach.com for all the latest product news, club dates and destinations, a dealer locator function, and factory tour information. You can also e-mail us directly through the site at any time.





ALL ROADS LEAD TO WWW.MONACOCOACH.COM.

Wherever the road takes you, you're never more than a click away from your friends at Monaco. Just go to www.monacocoach.com for all the latest product news, club dates and destinations, a dealer locator function, and factory tour information. You can also e-mail us directly through the site at any time.



Due to continuous product improvement, please see the website for the latest in standards and options, specifications, and technical data. **Go to www.monacocoach.com.**

	Weight Ratings (Lbs.)					Measurements	Wheelbase	Overall Length	Overall Height (with A/C (add 5" for satellite option))	Interior Height	Interior Width	Exterior Width	Tank Capacity (Gal.) ¹	Water Heater	Gray Tank	Black Tank	Fresh Tank	LP Tank ²	Fuel Tank
	Gross Vehicle	Gross Combined ³	Front Gross Axle	Rear Gross Axle	Tag Axle														
38PDQ	37,600	47,600	14,600	23,000	N/A	224"	TBD	12' 10"	84"	96"	100.5"	10	78	44	100	31	130		
40QDP	37,600	47,600	14,600	23,000	N/A	272"	40' 11"	12' 10"	84"	96"	100.5"	10	78	44	100	31	130		
42PDQ	44,600	54,600	14,600	20,000	10,000	270.25"	42' 10"	12' 10"	84"	96"	100.5"	10	78	44	100	31	130		
42DSQ	44,600	54,600	14,600	20,000	10,000	270.25"	42' 10"	12' 10"	84"	96"	100.5"	10	78	44	100	31	130		
42KFQ	44,600	54,600	14,600	20,000	10,000	270.25"	42' 10"	12' 10"	84"	96"	100.5"	10	78	44	100	31	130		

¹Towing capacity is limited by GCWR; your vehicle's towing capacity is the difference between the GCWR and the actual vehicle weight, including all water, fuel, passengers and cargo. Your towed vehicle should be equipped with auxiliary brakes if the weight of the towed vehicle exceeds 1,000 lbs. Consult your owner's manual for further towing information.

²All tank capacities are estimated based upon calculations provided by the tank manufacturers and represent approximate capacities. The actual "usable capacity" may be greater or less than the estimated capacities based upon fabrication and installation of the tanks.

³Actual filled LP capacity is 80% of listing due to safety shut-off required on tank.

The actual overall length of the recreational vehicle may differ from that indicated in the brochure due to variances in the manufacturing process and/or installed components. The actual length may be greater or less than that indicated. Due to the large variety of options and floorplan arrangements available to our customers, actual weights for each unit can differ significantly. Monaco Coach provides a weight sticker on each unit we produce which includes that unit's tank capacities and approximate weight. Consult your local Monaco Coach dealer for unit availability and further information. The information printed in this brochure reflects product design, fabrication, and component parts at the date of printing. The manufacturer reserves the right, at any time, to make changes in product design or material or component specifications as its sole option, without notice. This

includes the substitution of components of a different brand or trade name which will result in comparable performance. All information printed in this brochure is subject to change after the date of printing. Some features shown or mentioned in this brochure are optional and may only be available in selected floorplans. Photographs may show props or decorations that are not standard equipment on Monaco Coach models. Monaco Coach, the Monaco logo and its design, are registered trademarks. All other products and company names are trademarks and/or registered trademarks of their respective holders. While the color of the motorhome's exterior and the interior fabrics depicted in this sales brochure are fair and reasonable depictions, the colors depicted may not be an exact match of the actual colors because of the variances in photo-processing and variances caused by inserting the photographs

within the sales brochure. Due to product improvements, changes during the model year and/or transcription errors that may occur, information represented within this brochure may not be accurate at the time of your purchase. If certain information is significant to your purchasing decision, please confirm the information with your dealer prior to submitting your order. Component part and appliance manufacturers issue limited warranties covering those portions of the recreational vehicle not covered by the Limited Warranties issued by Monaco Coach Corporation. To learn which specific component parts and appliances are excluded from the Limited Warranties issued by Monaco Coach Corporation, please contact your selling dealership or Monaco Coach Corporation directly, or review the warranty packet inside the recreational vehicle.

BODY CONSTRUCTION

- Aluminum Superstructure
- Seamless One-Piece Molded Crowned Fiberglass Roof
- Interior Height 84"
- Foam Insulated Floor Framing with 3-Ply Underbelly
- Laminated Smooth Gel Coat Fiberglass Exterior Walls
- Front Molded Fiberglass Cap
- Rear Molded Fiberglass Cap with Integrated Air Intake
- Panaview™ 1-Piece Front Windshield
- One-Piece Generator Access Door
- Electric Flush-Mounted Stepwell Cover
- Aluminum Framed Laminated Floor on Steel Trusses

- Laminated Structurwood™ Flooring
- Dual-Head Power-Controlled Heated Exterior Mirrors with Turn Indicator Lights
- Four Docking Lights
- Side-Hinged Baggage Doors with Chrome Door Latches
- 3M Film Front Mask
- Full-Length Monaco Mud Flap
- Storage Bay Slide-Out Tray — Pass-Through (Bay 2)
- Ozite Lined Pass-Through Storage Compartments
- Flush-Mounted Metal Fuel Doors
- Deluxe Full-Body Paint
- Roof Ladder
- Undercoating

OPTIONS

- "Super Savings Package" Includes: 3-Camera Rear Vision System with Audio and Adjustable Center Camera; In-Dash Driver's Message Center; Solid Surface Kitchen Sink; Auto Generator Start; Power Water Hose Reel; RV Sani-Con Tank Drainage System
- Storage Bay Slide-Out Tray (N/A: 38PDQ)

Due to continuous product improvement, please see the website for the latest in standards and options, specifications, and technical data. *Go to www.monacocoach.com.*

	Weight Ratings (Lbs.)					Measurements	Tank Capacity (Gal.) ²										
	Gross Vehicle	Gross Combined ¹	Front Gross Axle	Rear Gross Axle	Tag Axle		Wheelbase	Overall Length	Overall Height (with A/C) (add 5" for satellite option)	Interior Height	Interior Width	Exterior Width	Water Heater	Gray Tank	Black Tank	Fresh Tank	LP Tank ³
38PDQ	37,600	47,600	14,600	23,000	N/A	224"	TBD	12' 10"	84"	96"	100.5"	10	78	44	100	31	130
40QDP	37,600	47,600	14,600	23,000	N/A	272"	40' 11"	12' 10"	84"	96"	100.5"	10	78	44	100	31	130
42PDQ	44,600	54,600	14,600	20,000	10,000	270.25"	42' 10"	12' 10"	84"	96"	100.5"	10	78	44	100	31	130
42DSQ	44,600	54,600	14,600	20,000	10,000	270.25"	42' 10"	12' 10"	84"	96"	100.5"	10	78	44	100	31	130
42KFQ	44,600	54,600	14,600	20,000	10,000	270.25"	42' 10"	12' 10"	84"	96"	100.5"	10	78	44	100	31	130

¹Towing capacity is limited by GCWR; your vehicle's towing capacity is the difference between the GCWR and the actual vehicle weight, including all water, fuel, passengers and cargo. Your towed vehicle should be equipped with auxiliary brakes if the weight of the towed vehicle exceeds 1,000 lbs. Consult your owner's manual for further towing information.

²All tank capacities are estimated based upon calculations provided by the tank manufacturers and represent approximate capacities. The actual "usable capacity" may be greater or less than the estimated capacities based upon fabrication and installation of the tanks.

³Actual filled LP capacity is 80% of listing due to safety shut-off required on tank.

The actual overall length of the recreational vehicle may differ from that indicated in the brochure due to variances in the manufacturing process and/or installed components. The actual length may be greater or less than that indicated. Due to the large variety of options and floorplan arrangements available to our customers, actual weights for each unit can differ significantly. Monaco Coach provides a weight sticker on each unit we produce which includes that unit's tank capacities and approximate weight. Consult your local Monaco Coach dealer for unit availability and further information. The information printed in this brochure reflects product design, fabrication, and component parts at the date of printing. The manufacturer reserves the right, at any time, to make changes in product design or material or component specifications as its sole option, without notice. This

includes the substitution of components of a different brand or trade name which will result in comparable performance. All information printed in this brochure is subject to change after the date of printing. Some features shown or mentioned in this brochure are optional and may only be available in selected floorplans. Photographs may show props or decorations that are not standard equipment on Monaco Coach models. Monaco Coach, the Monaco logo and its design, are registered trademarks. All other products and company names are trademarks and/or registered trademarks of their respective holders. While the color of the motorhome's exterior and the interior fabrics depicted in this sales brochure are fair and reasonable depictions, the colors depicted may not be an exact match of the actual colors because of the variances in photo-processing and variances caused by inserting the photographs

within the sales brochure. **Due to product improvements, changes during the model year and/or transcription errors that may occur, information represented within this brochure may not be accurate at the time of your purchase. If certain information is significant to your purchasing decision, please confirm the information with your dealer prior to submitting your order.** Component part and appliance manufacturers issue limited warranties covering those portions of the recreational vehicle not covered by the Limited Warranties issued by Monaco Coach Corporation. To learn which specific component parts and appliances are excluded from the Limited Warranties issued by Monaco Coach Corporation, please contact your selling dealership or Monaco Coach Corporation directly, or review the warranty packet inside the recreational vehicle.

BODY CONSTRUCTION

- › Aluminum Superstructure
- › Seamless One-Piece Molded Crowned Fiberglass Roof
- › Interior Height 84"
- › Foam Insulated Floor Framing with 3-Ply Underbelly
- › Laminated Smooth Gel Coat Fiberglass Exterior Walls
- › Front Molded Fiberglass Cap
- › Rear Molded Fiberglass Cap with Integrated Air Intake
- › Panaview™ 1-Piece Front Windshield
- › One-Piece Generator Access Door
- › Electric Flush-Mounted Stepwell Cover
- › Aluminum Framed Laminated Floor on Steel Trusses
- › Laminated Structurwood™ Flooring
- › Dual-Head Power-Controlled Heated Exterior Mirrors with Turn Indicator Lights
- › Four Docking Lights
- › Side-Hinged Baggage Doors with Chrome Door Latches
- › 3M Film Front Mask
- › Full-Length Monaco Mud Flap
- › Storage Bay Slide-Out Tray — Pass-Through (Bay 2)
- › Ozite Lined Pass-Through Storage Compartments
- › Flush-Mounted Metal Fuel Doors
- › Deluxe Full-Body Paint
- › Roof Ladder
- › Undercoating

OPTIONS

- › "Super Savings Package" Includes:
 - › 3-Camera Rear Vision System with Audio and Adjustable Center Camera; In-Dash Driver's Message Center; Solid Surface Kitchen Sink; Auto Generator Start; Power Water Hose Reel; RV Sani-Con Tank Drainage System
- › Storage Bay Slide-Out Tray (N/A: 38PDQ)

CHASSIS/ENGINE/SUSPENSION

- Roadmaster RR8S - Series Chassis (38PDQ, 40QDP)
- Roadmaster RR10S - Series Chassis (42PDQ, 42DSQ, 42KFQ)
- Cummins® ISL 425 HP (8.9L) Electronic Engine with Allison® 3000 MH 6-Speed World Transmission and Electronic Shifter
- Torque (@ 1,300 RPM) 1,200 lbs./ft. Max. Net
- Engine Displacement: 538"/8.9L
- Aluminum Side-Mounted Radiator with CAC Cooler
- Dual Fuel Fill
- 160 Amp Alternator
- Rear Axle Ratio: 4.30:1
- Tires: 295/80R/22.5
- Polished Aluminum Wheels
- Cushion Air Glide Suspension with Eight Outboard-Mounted Air Bags and Eight Shock Absorbers (38PDQ, 40QDP)
- Cushion Air Glide Suspension with Ten Shock Absorbers and Ten Air Bags, Eight of which are Outboard Mounted (42PDQ, 42DSQ, 42KFQ)
- Anti-Lock Braking System with Front Disc Brakes and Rear Drum Brakes
- Tag Axle with Anti-Lock Braking System (N/A: 40QDP)
- Automatic Traction Control
- Cummins® Variable Geometry Turbo Exhaust Brake

- Auto Slack Adjusters on Brakes
- Prewire for Supplemental Braking System
- Engine Block Heater
- Hydraulic Leveling System
- 10,000 Lb. Hitch Receiver with Dual Connector 4/7-Pin

OPTIONS

- Air Leveling System (Replaces Standard Hydraulic Levelers)

COCKPIT

- Automotive Dash with Eagle Burl Instrumentation Panel
- Pilot and Co-Pilot Pull-Down Sunshades
- Carpeted Driver and Passenger Floor Mats
- Color Rear Vision System with Audio and Adjustable Camera
- In-Dash AM/FM/CD Stereo Radio with Sirius-Ready Compatibility, IPOD Control, Aux-in-Conn, SD Card Slot and Weather Band
- CB Prep with Antenna
- Adjustable Brake and Accelerator Pedals
- Lighted VIP Smartwheel® Multiplexed Steering Wheel with Controls for Windshield Wipers, ICC and Cruise Control
- Intermittent Windshield Wipers
- Audible Turn Signals
- Cruise Control Light on Dash
- Roof-Mounted Dual Trumpet Air Horns
- Ultra leather™ Six-Way Power Pilot Seat and Co-Pilot Seat with Power Footrest and Full Wrap Skirt

OPTIONS

- 10-Disc CD Changer
- In-Dash Driver's Message Center
- 3-Camera Rear Vision System with Audio and Adjustable Center Camera
- GPS System
- Sirius Radio Satellite System (Requires Subscription)
- Auxiliary Blower

APPLIANCES AND ACCESSORIES

- Norcold® 12 Cu. Ft. 2-Way 4-Door Refrigerator with Ice Maker
- High-Output 3-Sealed-Burner Cooktop without Oven
- Spacesaver Convection Microwave with Touch Control
- 37" Flatscreen LCD TV in Living Area Hutch 42KFQ (Replaces Front Cockpit TV)
- 26" LCD TV in Bedroom
- 32" LCD TV Mounted in Living Area Hutch (38PDQ)
- 32" LCD TV Mounted in Front Overhead (N/A: 38PDQ, 42KFQ)
- 110 Volts Home Theater System
- TV Antenna with Booster
- Exterior Hook-Ups for DSS Dish and Cable
- Digital Satellite System Prep
- Washer/Dryer Prep

OPTIONS

- Dometic Sidewise 14 Cu. Ft. 2-Way Refrigerator with Water and Ice Dispenser in the Door
- Stainless Steel Package Includes Stainless Steel Refrigerator and Microwave
- Combination Washer/Dryer
- Stackable Washer/Dryer (40QDP, 42PDQ, 42DSQ Only)
- 37" Sharp Fixed TV (N/A: 38PDQ, 42KFQ)
- 26" LCD TV Mounted in Front Overhead (38PDQ)
- 46" LCD TV Mounted in Living Room Hutch (42KFQ)
- Bedroom DVD Player with IR Repeater
- Central Vacuum with Toe Kick
- R5 KVH In-Motion Satellite (Does Not Include Receivers)
- Multi-Satellite HD KU/KA Dish (Does Not Include Receiver)
- Exterior Entertainment Center (26" LCD/AM/FM/CD Radio with Two Speakers) (N/A: 40QDP, 42KFQ)

CHASSIS/ENGINE/SUSPENSION

- › Roadmaster RR8S - Series Chassis (38PDQ, 40QDP)
- › Roadmaster RR10S - Series Chassis (42PDQ, 42DSQ, 42KFQ)
- › Cummins® ISL 425 HP (8.9L) Electronic Engine with Allison® 3000 MH 6-Speed World Transmission and Electronic Shifter
- › Torque (@ 1,300 RPM) 1,200 lbs./ft. Max. Net
- › Engine Displacement: 538"/8.9L
- › Aluminum Side-Mounted Radiator with CAC Cooler
- › Dual Fuel Fill
- › 160 Amp Alternator
- › Rear Axle Ratio: 4.30:1
- › Tires: 295/80R/22.5
- › Polished Aluminum Wheels
- › Cushion Air Glide Suspension with Eight Outboard-Mounted Air Bags and Eight Shock Absorbers (38PDQ, 40QDP)
- › Cushion Air Glide Suspension with Ten Shock Absorbers and Ten Air Bags, Eight of which are Outboard Mounted (42PDQ, 42DSQ, 42KFQ)
- › Anti-Lock Braking System with Front Disc Brakes and Rear Drum Brakes
- › Tag Axle with Anti-Lock Braking System (N/A: 40QDP)
- › Automatic Traction Control
- › Cummins® Variable Geometry Turbo Exhaust Brake
- › Auto Slack Adjusters on Brakes
- › Prewire for Supplemental Braking System
- › Engine Block Heater
- › Hydraulic Leveling System
- › 10,000 Lb. Hitch Receiver with Dual Connector 4/7-Pin

OPTIONS

- › Air Leveling System (Replaces Standard Hydraulic Levelers)

COCKPIT

- › Automotive Dash with Eagle Burl Instrumentation Panel
- › Pilot and Co-Pilot Pull-Down Sunshades
- › Carpeted Driver and Passenger Floor Mats
- › Color Rear Vision System with Audio and Adjustable Camera
- › In-Dash AM/FM/CD Stereo Radio with Sirius-Ready Compatibility, iPod Control, Aux-in-Conn, SD Card Slot and Weather Band
- › CB Prep with Antenna
- › Adjustable Brake and Accelerator Pedals
- › Lighted VIP Smartwheel® Multiplexed Steering Wheel with Controls for Windshield Wipers, ICC and Cruise Control
- › Intermittent Windshield Wipers
- › Audible Turn Signals
- › Cruise Control Light on Dash
- › Roof-Mounted Dual Trumpet Air Horns
- › Ultraleather™ Six-Way Power Pilot Seat and Co-Pilot Seat with Power Footrest and Full Wrap Skirt

OPTIONS

- › 10-Disc CD Changer
- › In-Dash Driver's Message Center
- › 3-Camera Rear Vision System with Audio and Adjustable Center Camera
- › GPS System
- › Sirius Radio Satellite System (Requires Subscription)
- › Auxiliary Blower

APPLIANCES AND ACCESSORIES

- › Norcold® 12 Cu. Ft. 2-Way 4-Door Refrigerator with Ice Maker
- › High-Output 3-Sealed-Burner Cooktop without Oven
- › Spacesaver Convection Microwave with Touch Control
- › 37" Flatscreen LCD TV in Living Area Hutch 42KFQ (Replaces Front Cockpit TV)
- › 26" LCD TV in Bedroom
- › 32" LCD TV Mounted in Living Area Hutch (38PDQ)
- › 32" LCD TV Mounted in Front Overhead (N/A: 38PDQ, 42KFQ)
- › 110 Volts Home Theater System
- › TV Antenna with Booster
- › Exterior Hook-Ups for DSS Dish and Cable
- › Digital Satellite System Prep
- › Washer/Dryer Prep

OPTIONS

- › Dometic Sidewise 14 Cu. Ft. 2-Way Refrigerator with Water and Ice Dispenser in the Door
- › Stainless Steel Package Includes Stainless Steel Refrigerator and Microwave
- › Combination Washer/Dryer
- › Stackable Washer/Dryer (40QDP, 42PDQ, 42DSQ Only)
- › 37" Sharp Fixed TV (N/A: 38PDQ, 42KFQ)
- › 26" LCD TV Mounted in Front Overhead (38PDQ)
- › 46" LCD TV Mounted in Living Room Hutch (42KFQ)
- › Bedroom DVD Player with IR Repeater
- › Central Vacuum with Toe Kick
- › R5 KVH In-Motion Satellite (Does Not Include Receivers)
- › Multi-Satellite HD KU/KA Dish (Does Not Include Receiver)
- › Exterior Entertainment Center (26" LCD/AM/FM/CD Radio with Two Speakers) (N/A: 40QDP, 42KFQ)

INTERIOR

- Gloss Finish Cabinetry Wood: Stained Oak and Natural Oak
- Crown Molding in Bedroom and Living Area
- Lined Cabinet Shelves
- Heavy-Duty Ball Bearing Drawer Guides
- Refrigerator Raised Panel Hardwood Inserts
- Oil Rubbed Bronze Finish on Cabinetry Hardware Throughout
- Oil Rubbed Bronze Bath Accessories
- Radius Polished Solid Surface Kitchen Countertop with 70/30 Stainless Steel Sink with Two Sink Covers
- Roll-Out Polished Solid Surface Kitchen Countertop Extension (N/A: 38PDQ)
- Decorative Tile with Corian® Molding Backsplash in Galley and Lavatory
- Polished Solid Surface Bathroom Countertop with Integrated Sink
- Kitchen Overhead Cabinets with Adjustable Shelf
- Ceramic Tile Flooring in Kitchen and Bathroom
- Designer Carpeting in Living Area and Bedroom
- Soft Touch Padded Vinyl Ceiling
- Decorative Hardwood Slide-Out Fascia Trim
- Hardwood Valances with Fabric Accents Throughout
- Oversized Rear Wardrobe Closet
- Decorative Headboard
- Bedroom Nightstands with Polished Solid Surface Countertops
- Bedroom Dresser with Polished Solid Surface Countertop and Integrated Hamper
- Bedroom Dresser/Wardrobe at the Foot of Bed

- Decorative Mirror with Wainscot Below
- Bedspread, Pillow Shams and Decorative Pillows
- Day/Night Pleated Blackout Shades in Living Area and Bedroom
- Mini Blinds in Kitchen and Private Bath (40QDP and 42PDQ No Private Bath Window)
- Soil Repellent Protection on Fabric

OPTIONS

- Decors: Jamocho Cream III, Golden Twilight II, Pomegranate, Sagebrush
- Gloss Finish Cabinetry Wood Choice: Stained Cherry, Natural Cherry, Spiced Maple
- Full Tile in Living Room
- Solid Surface Kitchen Sink

FURNITURE

- Solid Surface Dinette Table with Two Dinette Chairs and Two Folding Chairs
- Roadside: Fabric Jackknife Sofa
- Curbside: Fabric Jackknife Sofa (N/A: 38PDQ)
- Curbside: Fabric Loveseat (38PDQ)
- Queen Bed (60" x 80") with Polished Solid Surface Nightstands (38PDQ, 40QDP)
- King Bed (72" x 80") (42PDQ, 42DSQ, 42KFO)

OPTIONS

- King Bed with One Nightstand (40QDP)
- Queen Bed Select Comfort Air Mattress
- King Bed Select Comfort Air Mattress (N/A: 38PDQ)
- Roadside: Leather Jackknife Sofa
- Roadside: Fabric Hide-A-Bed Sofa with Air Mattress (N/A: 42KFO)
- Roadside: Leather Hide-a-Bed with Air Mattress (N/A: 42KFO)
- Roadside: Leather/Fabric Sectional Booth Dinette Ensemble (N/A: 40QDP)
- Roadside: Leather Sectional Booth Dinette Ensemble (N/A: 40QDP)
- Roadside: Wraparound Computer Desk with Ultraleather™ Euro-Recliner (N/A: 38PDQ, 40QDP, 42DSQ)
- Roadside: Leather J-Lounge with Drawer (40QDP, 42KFO)
- Roadside: Leather/Fabric J-Hide-A-Bed with Air Ensemble (N/A: 40QDP, 42KFO)

- Curbside: Leather Loveseat (38PDQ)
- Curbside: Fabric Hide-A-Bed Sofa with Air Mattress (N/A: 38PDQ, 42DSQ)
- Curbside: Leather Hide-A-Bed Sofa with Air Mattress (N/A: 38PDQ, 42DSQ)
- Curbside: Leather Jackknife Sofa (N/A: 38PDQ)
- Curbside: Leather J-Lounge with Drawer (N/A: 38PDQ)
- Curbside: Wraparound Computer Desk with Ultraleather™ Euro-Recliner (40QDP)
- Curbside: Leather/Fabric Sectional Booth Dinette Ensemble (40QDP)
- Curbside: Leather Sectional Booth Dinette Ensemble (40QDP)
- Curbside: Leather J-Hide-A-Bed with Air Ensemble (40QDP)
- Curbside: Leather/Fabric J-Hide-A-Bed with Air Ensemble (40QDP)
- Two Folding Chairs with Dinette Ensemble

ELECTRICAL SYSTEMS AND LIGHTS

- 50 Amp 120V Distribution Panel and Power Cord Reel
- Battery Maintainer
- Onan® 8.0 kW Quiet Diesel Generator on Manual Slide-Out (38PDQ, 40QDP)
- Onan® 10.0 kW QD Generator on Manual Slide-Out (42PDQ, 42DSQ, 42KFO)
- Energy Management System
- Slide-Out Battery Tray
- Four 6V Deep Cycle House Batteries
- Two 12V Heavy-Duty Chassis Batteries
- Battery Disconnect Switch at Front Door
- Battery Boost Switch in Cockpit
- 2,000 Watt Inverter

- Porch Light
- Lighted Exterior Power Entry Step
- Lighted Interior Entry Steps
- Lights in Outside Storage Compartments
- 120V Receptacles in Outside Storage Compartment
- Underhood Utility Light
- Multiplex 12V Wiring for All Lighting Throughout Interior of Coach
- Pilot and Co-Pilot Map Lights
- Fluorescent Light under Kitchen Overhead
- Fluorescent Ceiling Lights Throughout
- Oil Rubbed Bronze Decorative Lighting in Living Room, Dinette and Bath

- Frosted Halogen Lights under Living Room, Dining Room, Bedroom Dresser and Bed Overhead Cabinets
- Convenience Center Located in Hallway
- Prewire for Solar Panel

OPTIONS

- Auto Generator Start
- 2,000-Watt Pure Sine Wave Inverter
- 65-Watt Solar Panel

INTERIOR

- › Gloss Finish Cabinetry Wood: Stained Oak and Natural Oak
- › Crown Molding in Bedroom and Living Area
- › Lined Cabinet Shelves
- › Heavy-Duty Ball Bearing Drawer Guides
- › Refrigerator Raised Panel Hardwood Inserts
- › Oil Rubbed Bronze Finish on Cabinetry Hardware Throughout
- › Oil Rubbed Bronze Bath Accessories
- › Radius Polished Solid Surface Kitchen Countertop with 70/30 Stainless Steel Sink with Two Sink Covers
- › Roll-Out Polished Solid Surface Kitchen Countertop Extension (N/A: 38PDQ)
- › Decorative Tile with Corian® Molding Backsplash in Galley and Lavatory
- › Polished Solid Surface Bathroom Countertop with Integrated Sink
- › Kitchen Overhead Cabinets with Adjustable Shelf
- › Ceramic Tile Flooring in Kitchen and Bathroom
- › Designer Carpeting in Living Area and Bedroom
- › Soft Touch Padded Vinyl Ceiling
- › Decorative Hardwood Slide-Out Fascia Trim
- › Hardwood Valances with Fabric Accents Throughout
- › Oversized Rear Wardrobe Closet
- › Decorative Headboard
- › Bedroom Nightstands with Polished Solid Surface Countertops
- › Bedroom Dresser with Polished Solid Surface Countertop and Integrated Hamper
- › Bedroom Dresser/Wardrobe at the Foot of Bed
- › Decorative Mirror with Wainscot Below
- › Bedspread, Pillow Shams and Decorative Pillows
- › Day/Night Pleated Blackout Shades in Living Area and Bedroom
- › Mini Blinds in Kitchen and Private Bath (40QDP and 42PDQ No Private Bath Window)
- › Soil Repellent Protection on Fabric

OPTIONS

- › Decors: Jamocha Cream III, Golden Twilight II, Pomegranate, Sagebrush
- › Gloss Finish Cabinetry Wood Choice: Stained Cherry, Natural Cherry, Spiced Maple
- › Full Tile in Living Room
- › Solid Surface Kitchen Sink

FURNITURE

- › Solid Surface Dinette Table with Two Dinette Chairs and Two Folding Chairs
- › Roadside: Fabric Jackknife Sofa
- › Curbside: Fabric Jackknife Sofa (N/A: 38PDQ)
- › Curbside: Fabric Loveseat (38PDQ)
- › Queen Bed (60"x 80") with Polished Solid Surface Nightstands (38PDQ, 40QDP)
- › King Bed (72"x 80") (42PDQ, 42DSQ, 42KFQ)

OPTIONS

- › King Bed with One Nightstand (40QDP)
- › Queen Bed Select Comfort Air Mattress
- › King Bed Select Comfort Air Mattress (N/A: 38PDQ)
- › Roadside: Leather Jackknife Sofa
- › Roadside: Fabric Hide-A-Bed Sofa with Air Mattress (N/A: 42KFQ)
- › Roadside: Leather Hide-a-Bed with Air Mattress (N/A: 42KFQ)
- › Roadside: Leather/Fabric Sectional Booth Dinette Ensemble (N/A: 40QDP)
- › Roadside: Leather Sectional Booth Dinette Ensemble (N/A: 40QDP)
- › Roadside: Wraparound Computer Desk with Ultraleather™ Euro-Recliner (N/A: 38PDQ, 40QDP, 42DSQ)
- › Roadside: Leather J-Lounge with Drawer (40QDP, 42KFQ)
- › Roadside: Leather/Fabric J-Hide-A-Bed with Air Ensemble (N/A: 40QDP, 42KFQ)
- › Curbside: Leather Loveseat (38PDQ)
- › Curbside: Fabric Hide-A-Bed Sofa with Air Mattress (N/A: 38PDQ, 42DSQ)
- › Curbside: Leather Hide-A-Bed Sofa with Air Mattress (N/A: 38PDQ, 42DSQ)
- › Curbside: Leather Jackknife Sofa (N/A: 38PDQ)
- › Curbside: Leather J-Lounge with Drawer (N/A: 38PDQ)
- › Curbside: Wraparound Computer Desk with Ultraleather™ Euro-Recliner (40QDP)
- › Curbside: Leather/Fabric Sectional Booth Dinette Ensemble (40QDP)
- › Curbside: Leather Sectional Booth Dinette Ensemble (40QDP)
- › Curbside: Leather J-Hide-A-Bed with Air Ensemble (40QDP)
- › Curbside: Leather/Fabric J-Hide-A-Bed with Air Ensemble (40QDP)
- › Two Folding Chairs with Dinette Ensemble

ELECTRICAL SYSTEMS AND LIGHTS

- › 50 Amp 120V Distribution Panel and Power Cord Reel
- › Battery Maintainer
- › Onan® 8.0 kW Quiet Diesel Generator on Manual Slide-Out (38PDQ, 40QDP)
- › Onan® 10.0 kW QD Generator on Manual Slide-Out (42PDQ, 42DSQ, 42KFQ)
- › Energy Management System
- › Slide-Out Battery Tray
- › Four 6V Deep Cycle House Batteries
- › Two 12V Heavy-Duty Chassis Batteries
- › Battery Disconnect Switch at Front Door
- › Battery Boost Switch in Cockpit
- › 2,000 Watt Inverter
- › Porch Light
- › Lighted Exterior Power Entry Step
- › Lighted Interior Entry Steps
- › Lights in Outside Storage Compartments
- › 120V Receptacles in Outside Storage Compartment
- › Underhood Utility Light
- › Multiplex 12V Wiring for All Lighting Throughout Interior of Coach
- › Pilot and Co-Pilot Map Lights
- › Fluorescent Light under Kitchen Overhead
- › Fluorescent Ceiling Lights Throughout
- › Oil Rubbed Bronze Decorative Lighting in Living Room, Dinette and Bath
- › Frosted Halogen Lights under Living Room, Dining Room, Bedroom Dresser and Bed Overhead Cabinets
- › Convenience Center Located in Hallway
- › Prewire for Solar Panel

OPTIONS

- › Auto Generator Start
- › 2,000-Watt Pure Sine Wave Inverter
- › 65-Watt Solar Panel

PLUMBING AND LP SYSTEMS

- Demand Water System and Water Pump
- 10-Gallon LP Gas/Electric Water Heater with Electronic Ignition
- Single-Lever Oil Rubbed Bronze Kitchen Faucet with Pullout Sprayer
- Central Water Filtration System
- Double-Handle Oil Rubbed Bronze Bath Faucet
- Single-Handle Oil Rubbed Bronze Shower Faucet with Slide Bar and Shut-Off Valve at Shower Head
- Exterior Tank Monitoring Gauges
- Water Heater Bypass Valve
- Water Pump Switch in Convenience Center, Service Bay and Bath
- China Toilet
- China Toilet Electronic Silent Plus (Rear Bath 42DSQ)
- Shower inside Wet Bay with Hot/Cold Water
- No-Fuss Flush Holding Tank Rinsing System
- Gravity and Pressurized Water Fill
- Insulated Systems Compartment with Easy Access to Hook-Up
- Sewer Hose Storage (Deleted When RV Sani-Con Tank Drainage System Is Selected)
- One-Piece Round Shower with Reeded Glass Door (N/A: 42KFQ)

- One-Piece Neo-Angled Shower with Obscured Glass Door (42KFQ)
- Satin Nickel Shower Door Frame with Decorative Glass

OPTIONS

- Power Water Hose Reel
- RV Sani-Con Tank Drainage System
- Electric Automatic Winterization
- Neo-Angled Bathtub

HEATING, VENTS AND AIR CONDITIONING

- Dual 13.5M BTU Roof Air Conditioners with Ducted Air, Heat Pumps and Digital Thermostat Control (38PDQ, 40QDP)
- Three 13.5M BTU Roof Air Conditioners with Wall Thermostat and Heat Pump (42' Floorplans Only)
- Dual Zone Electronic Ignition Furnaces 51M BTU
- Electronic AC/Heat Climate Control System
- In-Floor Ducted Heating System
- 12V Attic Fan in Kitchen, Hall Bath and Private Bath (N/A: 42KFQ)
- 12V Heater in Wet Bay

OPTIONS

- Aqua-Hot® 450 Water and Heating System
- Ceiling Fan in Bedroom
- Dual 15M BTU Roof Air Conditioners with Ducted Air, Heat Pumps and Digital Thermostat Control (38PDQ, 40QDP)
- Two 15M BTU Roof Air Conditioners and One 13.5M BTU Roof Air Conditioner with Wall Thermostats and Heat Pumps (All 42' Floorplans)

WINDOWS, DOORS AND AWNINGS

- Radius Flush-Mounted Dual Pane Safety Glass Dark Tinted Slider Windows
- Front Entry Door with Air Seal, Removable Screen and Anti-Skid Steps
- Keyless Entry in Grab Handle with Baggage Door Lock Release and Doorbell
- Metal Interior Grab Handle at Entry Door and on Dash across from Passenger Seat
- Eclipse Automatic Patio Awning
- Automatic Front Door Awning
- Topper Slide-Out Awnings Living Area and Bedroom
- Window Awnings on All Windows except Slide-Out Windows under Patio Awning
- Tinted Skylight in Bathroom with Protecta Glaze

OPTIONS

- Apex Automatic Patio Awning with Remote

SAFETY

- Fire Extinguisher
- Deadbolt Lock on Entrance Door
- 120V GFI Protected Circuit
- LP Gas Detector
- Smoke Detector
- Carbon Monoxide Detector
- Driver and Passenger Three-Point Integrated Seatbelts
- Egress Windows

PLUMBING AND LP SYSTEMS

- › Demand Water System and Water Pump
- › 10-Gallon LP Gas/Electric Water Heater with Electronic Ignition
- › Single-Lever Oil Rubbed Bronze Kitchen Faucet with Pullout Sprayer
- › Central Water Filtration System
- › Double-Handle Oil Rubbed Bronze Bath Faucet
- › Single-Handle Oil Rubbed Bronze Shower Faucet with Slide Bar and Shut-Off Valve at Shower Head
- › Exterior Tank Monitoring Gauges
- › Water Heater Bypass Valve
- › Water Pump Switch in Convenience Center, Service Bay and Bath
- › China Toilet
- › China Toilet Electronic Silent Plus (Rear Bath 42DSQ)
- › Shower inside Wet Bay with Hot/Cold Water
- › No-Fuss Flush Holding Tank Rinsing System
- › Gravity and Pressurized Water Fill
- › Insulated Systems Compartment with Easy Access to Hook-Up
- › Sewer Hose Storage (Deleted When RV Sani-Con Tank Drainage System Is Selected)
- › One-Piece Round Shower with Reeded Glass Door (N/A: 42Kfq)

- › One-Piece Neo-Angled Shower with Obscured Glass Door (42Kfq)
- › Satin Nickel Shower Door Frame with Decorative Glass

OPTIONS

- › Power Water Hose Reel
- › RV Sani-Con Tank Drainage System
- › Electric Automatic Winterization
- › Neo-Angled Bathtub

HEATING, VENTS AND AIR CONDITIONING

- › Dual 13.5M BTU Roof Air Conditioners with Ducted Air, Heat Pumps and Digital Thermostat Control (38PDQ, 40QDP)
- › Three 13.5M BTU Roof Air Conditioners with Wall Thermostat and Heat Pump (42' Floorplans Only)
- › Dual Zone Electronic Ignition Furnaces 51M BTU
- › Electronic AC/Heat Climate Control System
- › In-Floor Ducted Heating System
- › 12V Attic Fan in Kitchen, Hall Bath and Private Bath (N/A: 42Kfq)
- › 12V Heater in Wet Bay

OPTIONS

- › Aqua-Hot® 450 Water and Heating System
- › Ceiling Fan in Bedroom
- › Dual 15M BTU Roof Air Conditioners with Ducted Air, Heat Pumps and Digital Thermostat Control (38PDQ, 40QDP)
- › Two 15M BTU Roof Air Conditioners and One 13.5M BTU Roof Air Conditioner with Wall Thermostats and Heat Pumps (All 42' Floorplans)

WINDOWS, DOORS AND AWNINGS

- › Radius Flush-Mounted Dual Pane Safety Glass Dark Tinted Slider Windows
- › Front Entry Door with Air Seal, Removable Screen and Anti-Skid Steps
- › Keyless Entry in Grab Handle with Baggage Door Lock Release and Doorbell
- › Metal Interior Grab Handle at Entry Door and on Dash across from Passenger Seat
- › Eclipse Automatic Patio Awning
- › Automatic Front Door Awning
- › Topper Slide-Out Awnings Living Area and Bedroom
- › Window Awnings on All Windows except Slide-Out Windows under Patio Awning
- › Tinted Skylight in Bathroom with Protecta Glaze

OPTIONS

- › Apex Automatic Patio Awning with Remote

SAFETY

- › Fire Extinguisher
- › Deadbolt Lock on Entrance Door
- › 120V GFI Protected Circuit
- › LP Gas Detector
- › Smoke Detector
- › Carbon Monoxide Detector
- › Driver and Passenger Three-Point Integrated Seatbelts
- › Egress Windows



MONACO®

DRIVING YOUR DREAM.

Take a closer look, and you'll discover that Monaco Coach Corporation gives you more industry "bests" than any other RV manufacturer. Like the incomparable ride and handling of the Roadmaster Chassis. The convenience of our 3,500 service centers. The peace of mind of 24/7 roadside assistance. The value of Monaco Financial Services. And the online support of monacocoach.com. At Monaco, we've built our reputation by listening to you — and answering to you. And that's the difference that's made us the best.

SIGNATURE SERIES



THE EXECUTIVE®



DYNASTY®



CAMELOT®



DIPLOMAT®



KNIGHT®



CAYMAN®



LAPALMA XL®



MONARCH®



 2009 CAMELOT™



MONACO®

DRIVING YOUR DREAM.

Take a closer look, and you'll discover that Monaco Coach Corporation gives you more industry "bests" than any other RV manufacturer. Like the incomparable ride and handling of the Roadmaster Chassis. The convenience of our 3,500 service centers. The peace of mind of 24/7 roadside assistance. The value of Monaco Financial Services. And the online support of monacocoach.com. At Monaco, we've built our reputation by listening to you — and answering to you. And that's the difference that's made us the best.

SIGNATURE SERIES



THE EXECUTIVE®



DYNASTY®



CAMELOT®



DIPLOMAT®



KNIGHT®



CAYMAN®



LAPALMA XL®



MONARCH®

