

 DYNASTY[®]
2009



"These are the days we'll remember."



MONACO[®]

DRIVING YOUR DREAM.



 DYNASTY®
2009



"These are the days we'll remember."




MONACO®

DRIVING YOUR DREAM.





DYNASTY 


MONACO
DRIVING YOUR DREAM.

Your life together is a book that's written with every milestone. Epic in scope, rich with new adventures and rewards. And now, you're setting out to make every day a new chapter. Because now, you're setting out in the 2009 Dynasty. You're combining your appreciation for life's finer things with a passion for blazing a trail. You've found a luxury motorcoach that's designed for both the journeys and the destinations. Designed to add volumes to your life story.

YORKSHIRE IV | STAINED CHERRY | AUTUMN SUNBURST III





DYNASTY®



MONACO®

DRIVING YOUR DREAM.

Your life together is a book that's written with every milestone. Epic in scope, rich with new adventures and rewards. And now, you're setting out to make every day a new chapter. Because now, you're setting out in the 2009 Dynasty. You're combining your appreciation for life's finer things with a passion for blazing a trail. You've found a luxury motorcoach that's designed for both the journeys and the destinations. Designed to add volumes to your life story.

YORKSHIRE IV | STAINED CHERRY | AUTUMN SUNBURST III





COME HOME TO THIS.

Start and end each day in the graciousness of the Dynasty's kitchen and dining area. No matter how far-flung your adventures are, you'll always return to its state-of-the-art amenities and impeccable styling. With so many impressive details, even if you're not a gourmet chef, you'll always have the option of becoming one.

Many ingenious features help you make the most of your time — and get the most from your space. With a place for everything, you'll have less clutter and more room for the things that make this your home. Shown on the left is the optional central vacuum system with a toe-kick vacuum in the galley, for the ultimate convenience.





COME HOME TO THIS.

Start and end each day in the graciousness of the Dynasty's kitchen and dining area. No matter how far-flung your adventures are, you'll always return to its state-of-the-art amenities and impeccable styling. With so many impressive details, even if you're not a gourmet chef, you'll always have the option of becoming one.

Many ingenious features help you make the most of your time — and get the most from your space. With a place for everything, you'll have less clutter and more room for the things that make this your home. Shown on the left is the optional central vacuum system with a toe-kick vacuum in the galley, for the ultimate convenience.



YORKSHIRE IV
STAINED CHERRY
AUTUMN SUNBURST III



YOUR MASTER SUITE.

The Dynasty is designed to give you the flexibility to choose the standard and optional features that best suit you. Select a queen bed or king. Traditional mattress or air mattress. Ceramic tile or plank flooring. Shower or bathtub. These are just a few of the ways you can create the perfect living quarters — and the ultimate experience on the road.

YORKSHIRE IV | STAINED CHERRY | AUTUMN SUNBURST III





YORKSHIRE IV | STAINED CHERRY | AUTUMN SUNBURST III



YOUR MASTER SUITE.

The Dynasty is designed to give you the flexibility to choose the standard and optional features that best suit you. Select a queen bed or king. Traditional mattress or air mattress. Ceramic tile or plank flooring. Shower or bathtub. These are just a few of the ways you can create the perfect living quarters — and the ultimate experience on the road.





COMMAND PERFORMANCE.

Every detail in the Dynasty's cockpit is calculated to give you the utmost control and comfort behind the wheel — switches at your fingertips, memory settings in the pilot seat and optional GPS and Bluetooth™ technologies.

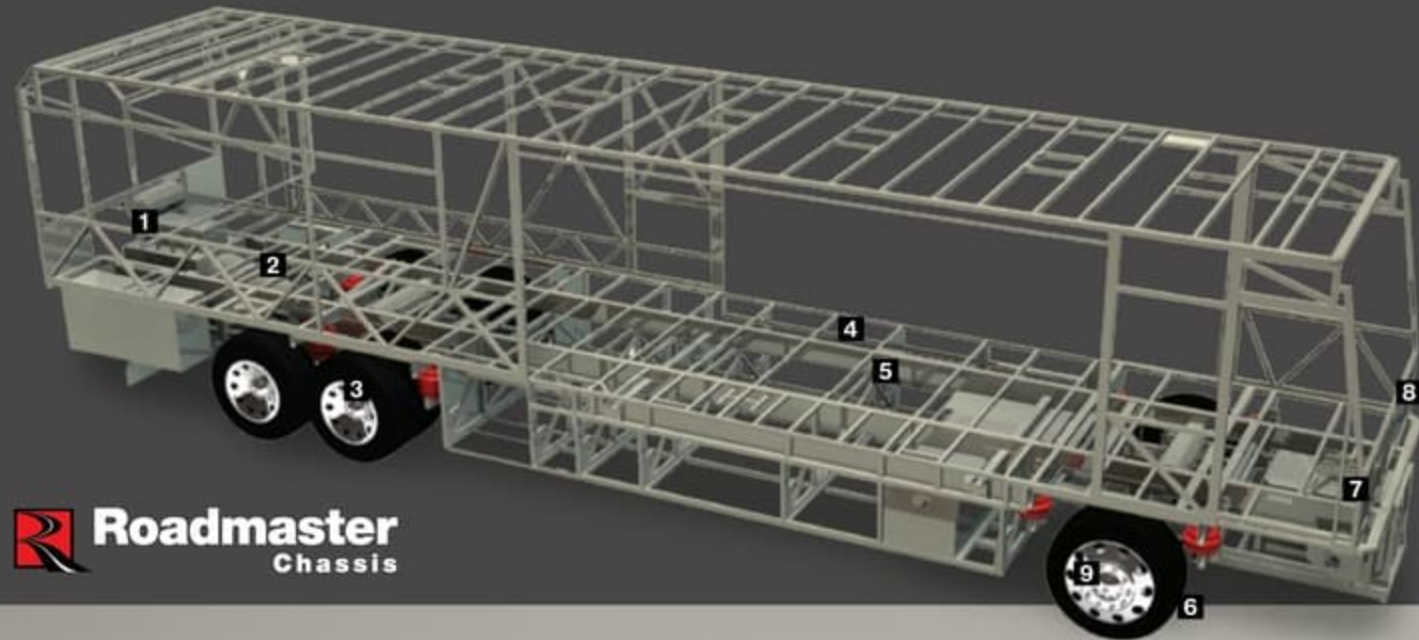
When parked, the front of the coach transforms into a place for projects or relaxation with a dash workstation and a power footrest on the co-pilot's seat. And the exclusive Panaview 1-piece windshield provides an enormous, unobstructed view of what's ahead.



COMMAND PERFORMANCE.

Every detail in the Dynasty's cockpit is calculated to give you the utmost control and comfort behind the wheel — switches at your fingertips, memory settings in the pilot seat and optional GPS and Bluetooth™ technologies.

When parked, the front of the coach transforms into a place for projects or relaxation with a dash workstation and a power footrest on the co-pilot's seat. And the exclusive Panaview 1-piece windshield provides an enormous, unobstructed view of what's ahead.



THE DIFFERENCE IS IN THE DETAILS.

Take the wheel of a luxury motorhome, and you're taking the wheel of the chassis it rides on. That's why the Dynasty rides exclusively on a Roadmaster chassis that is custom built to deliver the very best diesel motorhome experience. Roadmaster's semi-monocoque construction utilizes the most advanced design and engineering to distribute stress evenly throughout the entire chassis, reducing the possibility of torque or twisting and increasing durability and reliability. The Cushion Air Glide suspension system features 10 shocks and air bags, eight of which are outboard mounted, and the system is supported by the largest ping tanks in the industry. And front disc brakes provide added security, especially in poor road conditions. It's the ultimate foundation for a luxury ride.

ROADMASTER S-SERIES SEMI-MONOCOQUE CHASSIS

1 10,000 lb. hitch receiver offers powerful towing capacity with 7/4-way trailer plug (15,000 lb. hitch receiver optional).

2 Allison® 3000 MH 6-speed transmission for smooth shifting; our exclusive use of synthetic transmission fluid allows for up to three-year maintenance intervals. Allison® 4000 MH is also available with optional 500 HP engine.

3 Cushion Air Glide suspension system positions ten shocks and ten air bags, eight of which are outboard mounted with auto-leveling for greater stability, a smoother ride and the best handling in its class.

- Unique three-degree rear axle tilt perfectly aligns the engine, transmission and differential, minimizing stress on the drivetrain and reducing noise in the coach.
- Automatic Traction Control (ATC) eliminates wheel slippage in slick conditions and heightens control.
- Tag axle lifts for added maneuverability in tight spots.



4 Full-length frame rails fabricated from 3" by 8" by 1/4" 60,000 PSI structural steel; rails are spaced 44" on center for a wider stance and unmatched strength.

5 The semi-monocoque design, with trussed superstructure, distributes stress evenly throughout the entire chassis and adds strength to sidewalls and bays.

6 P295/80R/22.5 Goodyear steel-belted all-season tires ensure a safe and quiet ride (G670 RV tire).

7 The R.H. Sheppard power steering box allows for a 50-degree front wheel turn angle in both directions for better maneuverability and returns the steering wheel to its center position to eliminate driver fatigue.

8 All chassis are equipped with steel cage construction, steel firewall and steel stepwell for added safety.

9 Accuride rim with AccuShield coating that cleans easily with soap and water.

CUMMINS® ISL 425 HP

The Dynasty is equipped with a gutsy Cummins® ISL 425 HP engine for exceptional power and torque at the RPM where you need it most. Want even more muscle? Check out this all-new option for 2009 — the Cummins® ISM 07 Emissions 500 HP engine. Yes, that's 500 environmentally friendly, palm-sweating horses. (Optional engine available on all floorplans.)



MULTIPLEX WIRING

Multiplex wiring, used throughout the coach, replaces cumbersome bundles of wire with separate modules. These modules communicate via a single wire, making servicing easier and reducing the overall weight of the RV.

A service technician can simply hook up a laptop directly to the modules for easy troubleshooting.



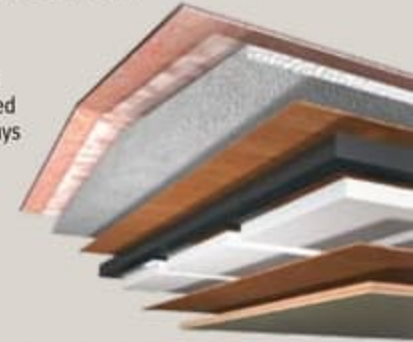
WARRANTIES

12 MONTH/24,000 MILE basic limited warranty
5 YEAR/50,000 MILE limited warranty on aluminum or steel frame structure of sidewall, roof, front and rear cap
3 YEAR/50,000 MILE limited warranty on Roadmaster chassis
See owner's manual for complete details.

8-LAYER MOLDED FIBERGLASS ALL-SEASON FOAM INSULATED ROOF

(top to bottom)

- One-piece 1/4" fiberglass roof is crowned for easy water runoff and seamlessly joined with front and rear caps; non-skid walkways provide added safety and convenience
- Vapor barrier
- 3-1/2" tapered bead foam supports the crowned roof; center tunnel houses wiring and air conditioner ducts
- 1/4" marine grade plywood sheeting
- Tubular steel framework
- State-of-the-art closed cel foam seals every nook and crevice
- Luaun and vinyl paneling are Vac-U-Bonded
- Padded vinyl interior headliner absorbs sound and is easy to clean



6-LAYER LAMINATED GEL COAT FIBERGLASS SIDEWALLS

(left to right)

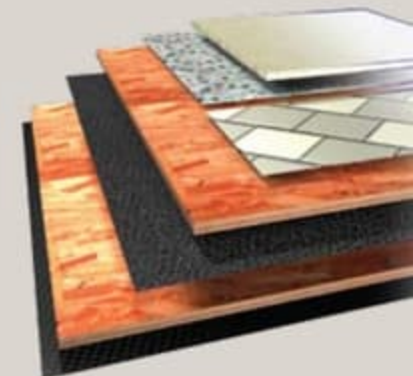
- Decorative wall coverings
- Luaun paneling; walls are Vac-U-Bonded for added strength
- Heavy-gauge tubular steel and 4" steel plate backers
- State-of-the-art closed cel foam seals every nook and crevice
- Luaun paneling
- Gel coat fiberglass outer wall



5-LAYER FLOORING

(top to bottom)

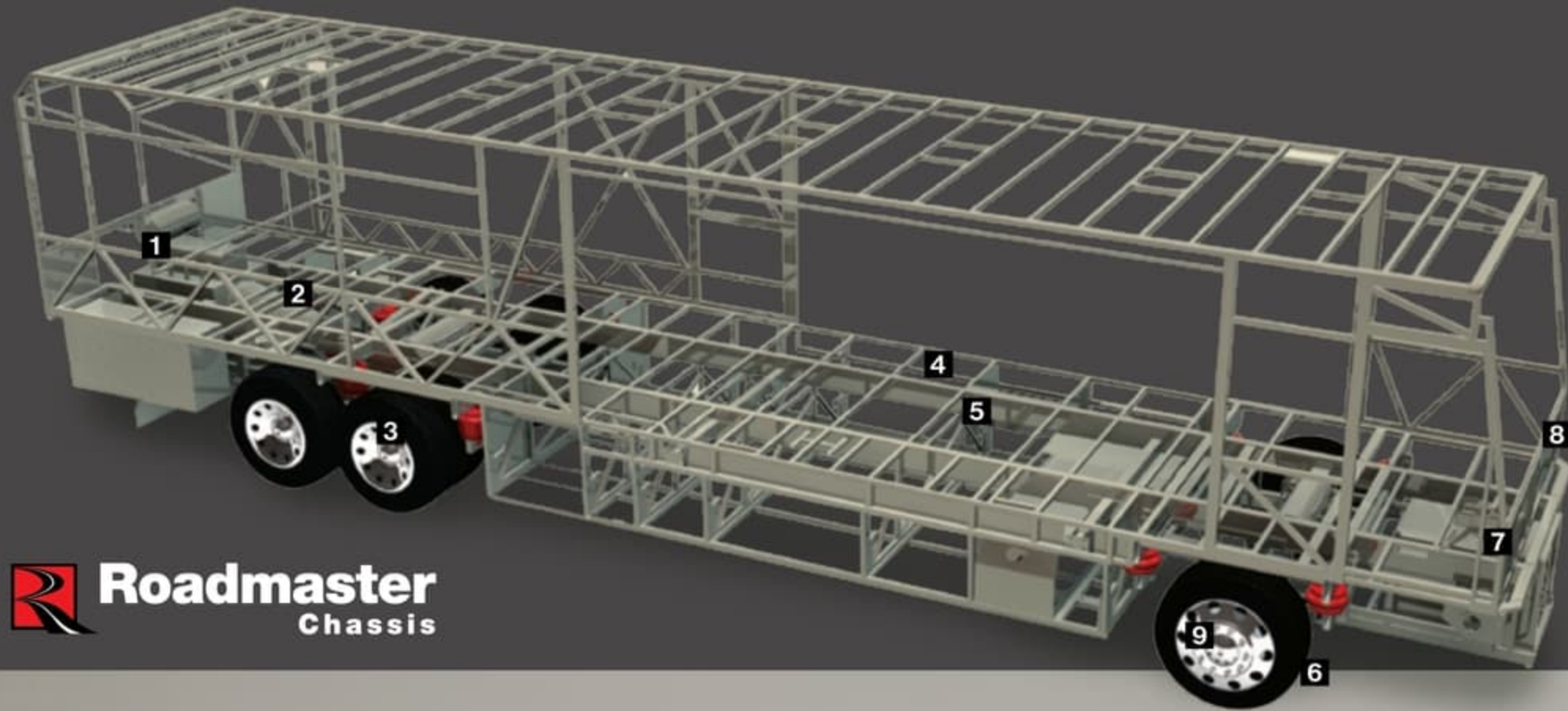
- Tile or 1/2" carpet pad and carpeting
- OSB flooring provides strength and durability
- Decibel paper intercepts and dampens road noise
- OSB flooring
- Waterproof Darco underbelly provides moisture barrier



ALL WITHIN REACH.

Dynasty's roomy storage bays feature insulated side-swing doors with power locks. Full pass-through compartments easily accommodate larger items, and a slide-out tray means no awkward bending or reaching.





THE DIFFERENCE IS IN THE DETAILS.

Take the wheel of a luxury motorhome, and you're taking the wheel of the chassis it rides on. That's why the Dynasty rides exclusively on a Roadmaster chassis that is custom built to deliver the very best diesel motorhome experience. Roadmaster's semi-monocoque construction utilizes the most advanced design and engineering to distribute stress evenly throughout the entire chassis, reducing the possibility of torque or twisting and increasing durability and reliability. The Cushion Air Glide suspension system features 10 shocks and air bags, eight of which are outboard mounted, and the system is supported by the largest ping tanks in the industry. And front disc brakes provide added security, especially in poor road conditions. It's the ultimate foundation for a luxury ride.

ROADMASTER S-SERIES SEMI-MONOCOQUE CHASSIS

- 1** 10,000 lb. hitch receiver offers powerful towing capacity with 7/4-way trailer plug (15,000 lb. hitch receiver optional).
- 2** Allison® 3000 MH 6-speed transmission for smooth shifting; our exclusive use of synthetic transmission fluid allows for up to three-year maintenance intervals. Allison® 4000 MH is also available with optional 500 HP engine.
- 3** Cushion Air Glide suspension system positions ten shocks and ten air bags, eight of which are outboard mounted with auto-leveling for greater stability, a smoother ride and the best handling in its class.
 - Unique three-degree rear axle tilt perfectly aligns the engine, transmission and differential, minimizing stress on the drivetrain and reducing noise in the coach.
 - Automatic Traction Control (ATC) eliminates wheel slippage in slick conditions and heightens control.
 - Tag axle lifts for added maneuverability in tight spots.
- 4** Full-length frame rails fabricated from 3" by 8" by 1/4" 60,000 PSI structural steel; rails are spaced 44" on center for a wider stance and unmatched strength.
- 5** The semi-monocoque design, with trussed superstructure, distributes stress evenly throughout the entire chassis and adds strength to sidewalls and bays.
- 6** P295/80R/22.5 Goodyear steel-belted all-season tires ensure a safe and quiet ride (G670 RV tire).



- 7** The R.H. Sheppard power steering box allows for a 50-degree front wheel turn angle in both directions for better maneuverability and returns the steering wheel to its center position to eliminate driver fatigue.
- 8** All chassis are equipped with steel cage construction, steel firewall and steel stepwell for added safety.
- 9** Accuride rim with AccuShield coating that cleans easily with soap and water.

CUMMINS® ISL 425 HP

The Dynasty is equipped with a gutsy Cummins® ISL 425 HP engine for exceptional power and torque at the RPM where you need it most. Want even more muscle? Check out this all-new option for 2009 – the Cummins® ISM 07 Emissions 500 HP engine. Yes, that's 500 environmentally friendly, palm-sweating horses. (Optional engine available on all floorplans.)



MULTIPLEX WIRING

Multiplex wiring, used throughout the coach, replaces cumbersome bundles of wire with separate modules. These modules communicate via a single wire, making servicing easier and reducing the overall weight of the RV. A service technician can simply hook up a laptop directly to the modules for easy troubleshooting.



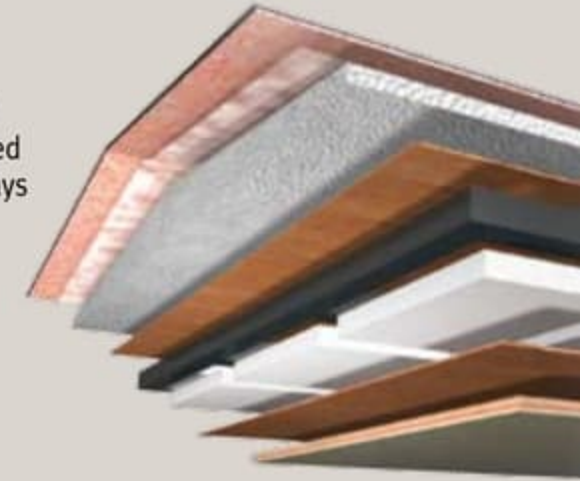
WARRANTIES

- 12 MONTH/24,000 MILE basic limited warranty
 - 5 YEAR/50,000 MILE limited warranty on aluminum or steel frame structure of sidewall, roof, front and rear cap
 - 3 YEAR/50,000 MILE limited warranty on Roadmaster chassis
- See owner's manual for complete details.

8-LAYER MOLDED FIBERGLASS ALL-SEASON FOAM INSULATED ROOF

(top to bottom)

- One-piece 1/4" fiberglass roof is crowned for easy water runoff and seamlessly joined with front and rear caps; non-skid walkways provide added safety and convenience
- Vapor barrier
- 3-1/2" tapered bead foam supports the crowned roof; center tunnel houses wiring and air conditioner ducts
- 1/4" marine grade plywood sheeting
- Tubular steel framework
- State-of-the-art closed cel foam seals every nook and crevice
- Luaun and vinyl paneling are Vac-U-Bonded
- Padded vinyl interior headliner absorbs sound and is easy to clean



6-LAYER LAMINATED GEL COAT FIBERGLASS SIDEWALLS

(left to right)

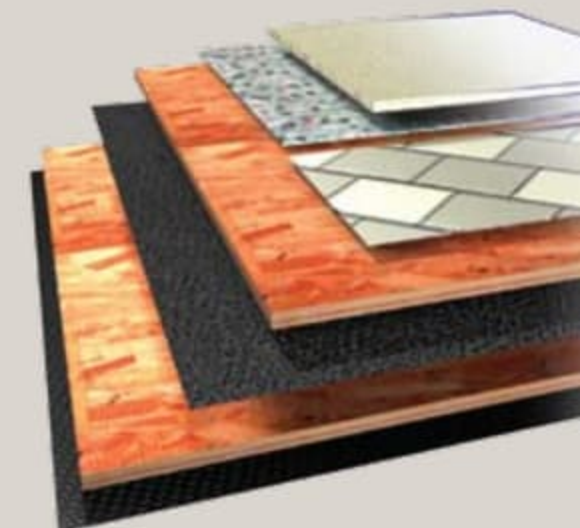
- Decorative wall coverings
- Luaun paneling; walls are Vac-U-Bonded for added strength
- Heavy-gauge tubular steel and 4" steel plate backers
- State-of-the-art closed cel foam seals every nook and crevice
- Luaun paneling
- Gel coat fiberglass outer wall



5-LAYER FLOORING

(top to bottom)

- Tile or 1/2" carpet pad and carpeting
- OSB flooring provides strength and durability
- Decibel paper intercepts and dampens road noise
- OSB flooring
- Waterproof Darco underbelly provides moisture barrier



ALL WITHIN REACH.

Dynasty's roomy storage bays feature insulated side-swing doors with power locks. Full pass-through compartments easily accommodate larger items, and a slide-out tray means no awkward bending or reaching.





STAINED OAK



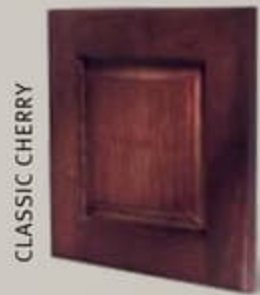
NATURAL OAK



STAINED CHERRY



NATURAL CHERRY



CLASSIC CHERRY



NATURAL MAPLE

NOW FOR THE HARD PART.

Choosing the Dynasty was easy. Now, it's time to make it your own. For 2009, our designers are pleased to present a stunning array of standard and optional decors and cabinetry styles. But don't worry, even if you end up flipping a coin, you'll both win.



AUTUMN SUNBURST III



BAHAMA WIND II



RALPH LAUREN BLACK PEARL



RALPH LAUREN KINGSBRIDGE



COGNAC SWIRL



ESPRESSO HAZE



RALPH LAUREN WINDERMERE

RALPH LAUREN PACKAGE:

Here's a feast for your senses. Our exclusive Ralph Lauren package offers upgraded features throughout the coach. Because we want your life on the road to be beautiful.

- › Exclusive Ralph Lauren Fabrics, Both Living Room and Bedroom
- › Upgraded Villa Furniture Featuring 2-Tone Ralph Lauren Fabric/Leather and Villa Dinette Chairs
- › Upgraded Galley and Lavatory Faucets
- › Upgraded Tumbled Stone Galley/Bath Backsplashes
- › Additional Decorative Pillows in Ralph Lauren Fabrics
- › Decorative Lighting, Hardware, All in Oil Rubbed Bronze
- › Detailed Decorative Carved Headboard
- › Upgraded Carved Slide-Out Fascia
- › Exclusive Fabrica Carpet
- › Black Microwave

Carpet A
Dinette B
Sofa C
Bedsread D

A	B	C	D
---	---	---	---

Note: Colors depicted are a reasonable representation though they may not be an exact match of the actual colors due to variances in processing and production. See your dealer for actual fabric and paint chip samples.



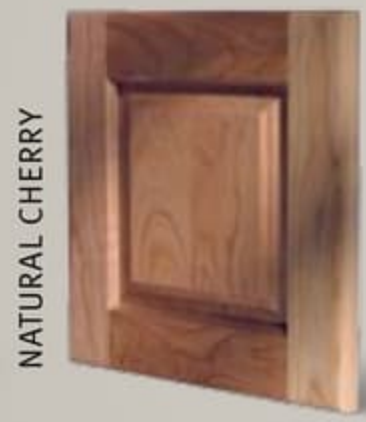
STAINED OAK



NATURAL OAK



STAINED CHERRY



NATURAL CHERRY



CLASSIC CHERRY



NATURAL MAPLE

NOW FOR THE HARD PART.

Choosing the Dynasty was easy. Now, it's time to make it your own. For 2009, our designers are pleased to present a stunning array of standard and optional decors and cabinetry styles. But don't worry, even if you end up flipping a coin, you'll both win.



AUTUMN SUNBURST III



BAHAMA WIND II



RALPH LAUREN BLACK PEARL



RALPH LAUREN KINGSBRIDGE



COGNAC SWIRL



ESPRESSO HAZE



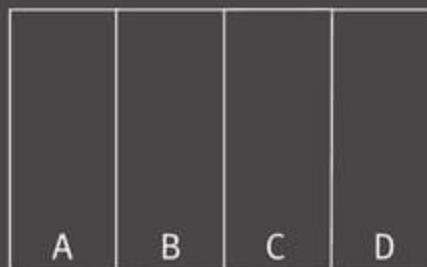
RALPH LAUREN WINDERMERE

RALPH LAUREN PACKAGE:

Here's a feast for your senses. Our exclusive Ralph Lauren package offers upgraded features throughout the coach. Because we want your life on the road to be beautiful.

- › Exclusive Ralph Lauren Fabrics, Both Living Room and Bedroom
- › Upgraded Villa Furniture Featuring 2-Tone Ralph Lauren Fabric/Leather and Villa Dinette Chairs
- › Upgraded Galley and Lavatory Faucets
- › Upgraded Tumbled Stone Galley/Bath Backsplashes
- › Additional Decorative Pillows in Ralph Lauren Fabrics
- › Decorative Lighting, Hardware, All in Oil Rubbed Bronze
- › Detailed Decorative Carved Headboard
- › Upgraded Carved Slide-Out Fascia
- › Exclusive Fabrica Carpet
- › Black Microwave

Carpet A
Dinette B
Sofa C
Bedspread D

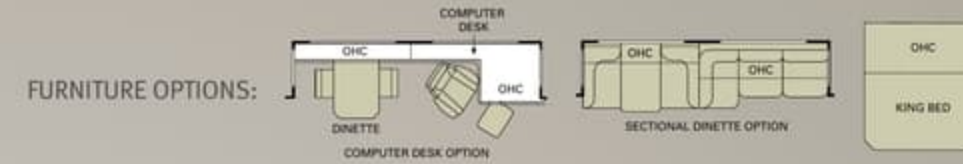


Note: Colors depicted are a reasonable representation though they may not be an exact match of the actual colors due to variances in processing and production. See your dealer for actual fabric and paint chip samples.

THE VIEW FROM ABOVE.

We invite you to take a moment and look over the Dynasty's spacious, innovative floorplans. For 2009, just a few of the highlights include the new Bishop IV, the Yorkshire IV with a private bath, the huge, wall-mounted 46-inch TV in the Squire IV and new, deeper bed slide-outs on all models.

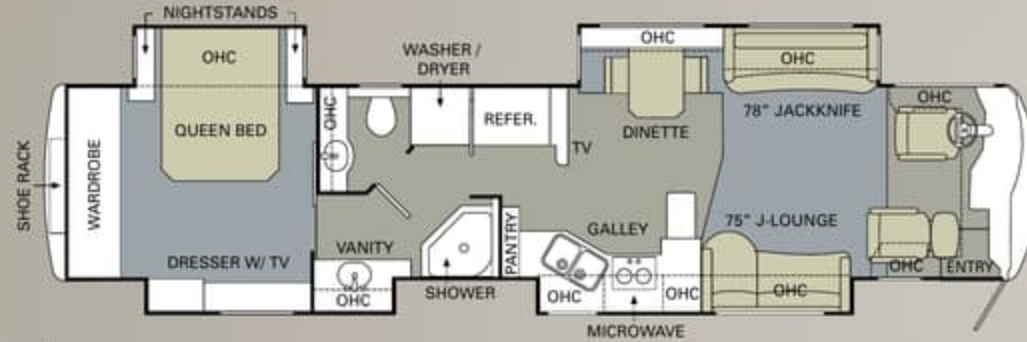
■ TILE ■ CARPET



BISHOP IV



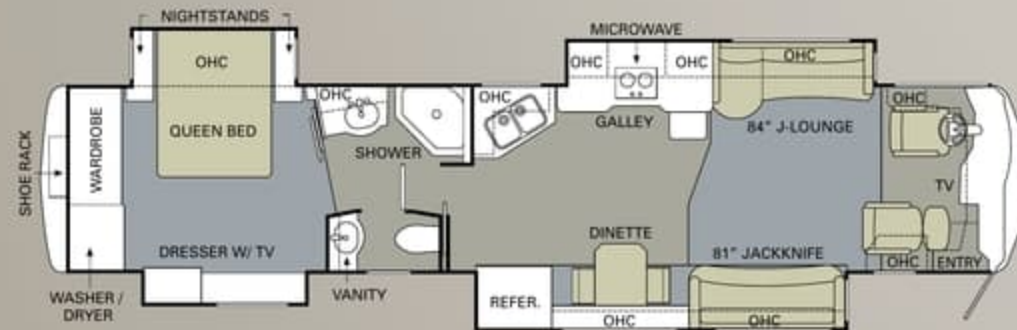
SQUIRE IV



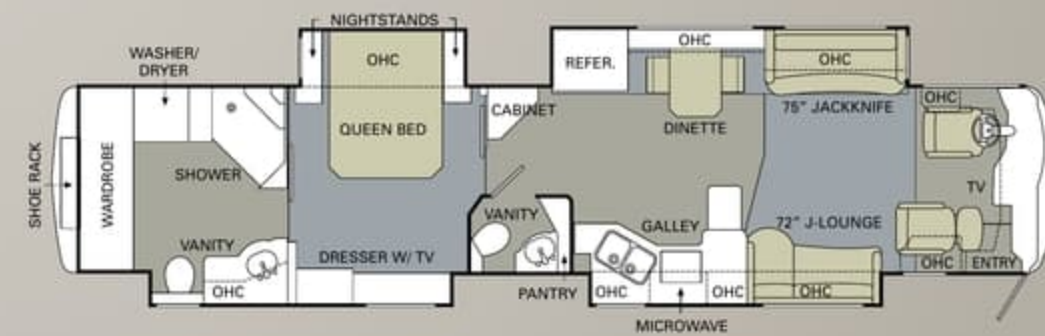
CHESHIRE IV



STAFFORD IV



NOTTINGHAM IV



YORKSHIRE IV



REGAL IV

24/7

EMERGENCY ASSISTANCE
SALES • TECH • ROADSIDE

WE'RE HERE. ANYTIME, EVERY TIME.

- Reach us anytime — literally — via our live customer support line.
- Drive in to one of our 350 Service Centers.
- Enjoy the first year free when you enroll in our Owner Advantage Roadside Assistance Program.
- See where it all begins with a tour of one of our facilities in Indiana or Oregon. Call 1-800-650-7337 or 1-800-634-0855 to find out more.

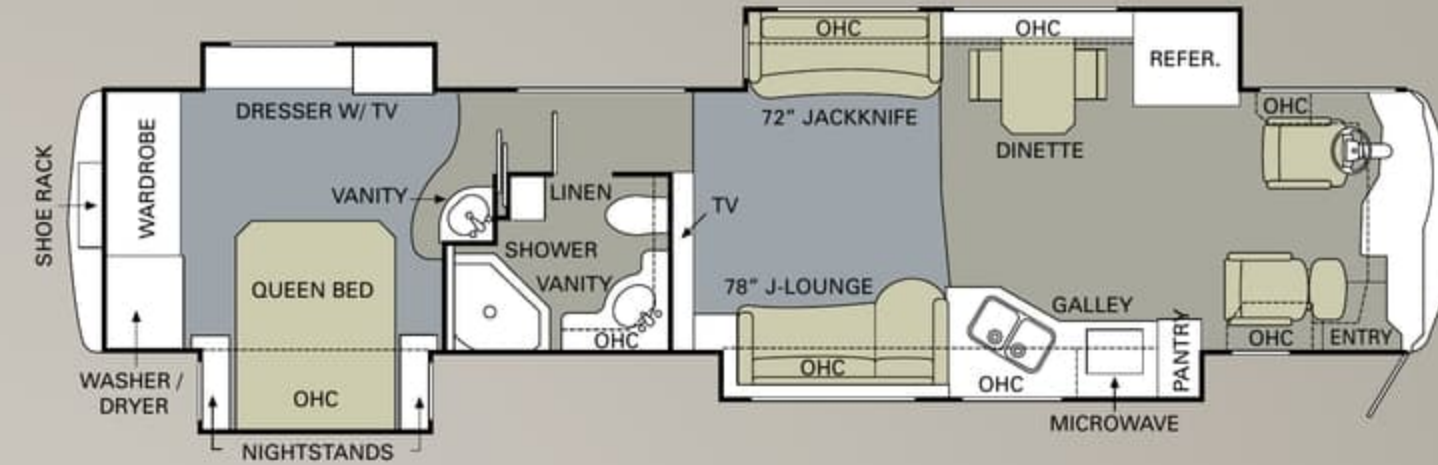
THE VIEW FROM ABOVE.

We invite you to take a moment and look over the Dynasty's spacious, innovative floorplans. For 2009, just a few of the highlights include the new Bishop IV, the Yorkshire IV with a private bath, the huge, wall-mounted 46-inch TV in the Squire IV and new, deeper bed slide-outs on all models.

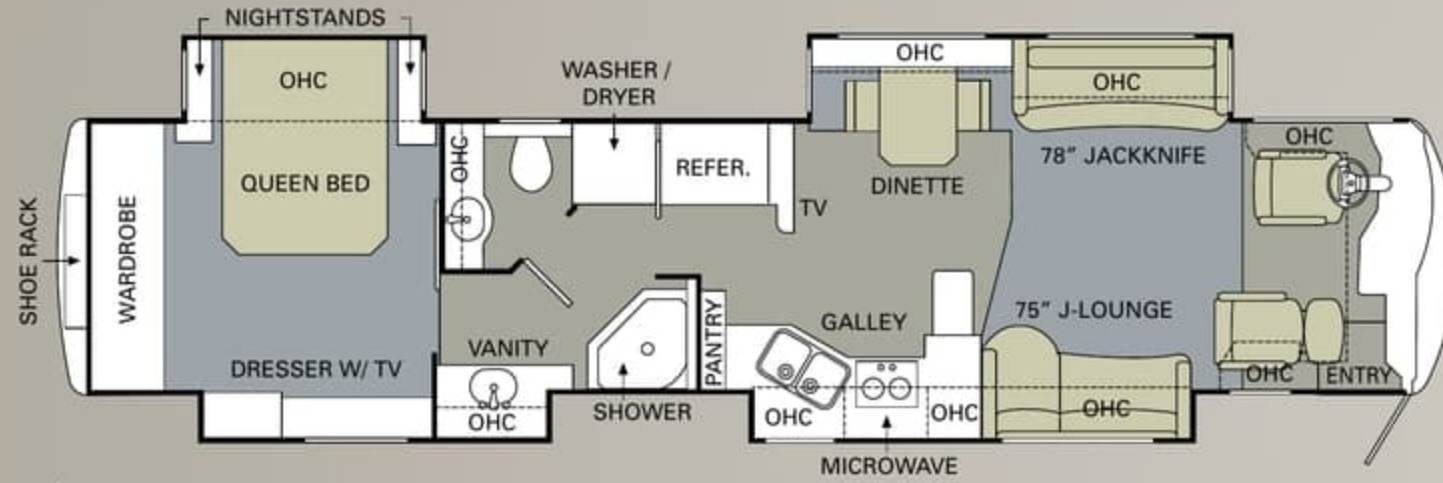
TILE CARPET



BISHOP IV



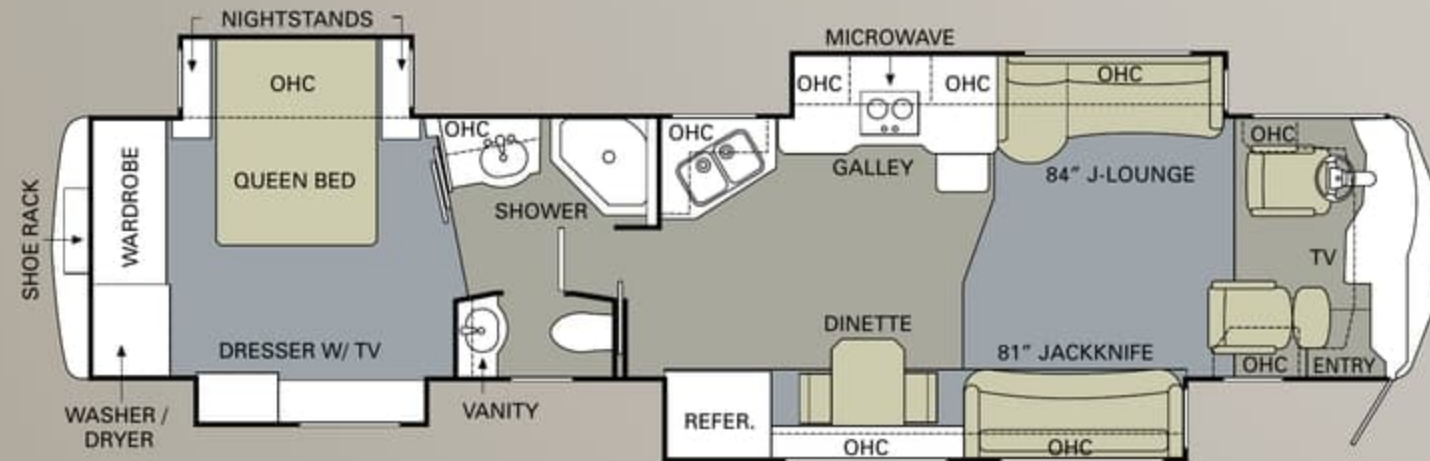
SQUIRE IV



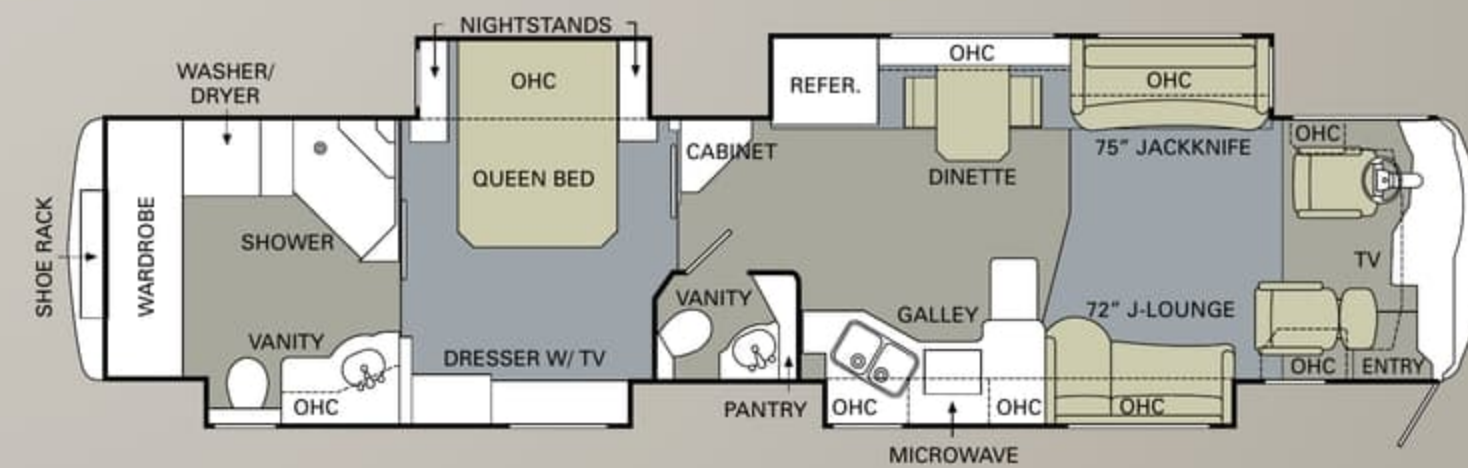
CHESHIRE IV



STAFFORD IV



NOTTINGHAM IV



YORKSHIRE IV



REGAL IV

24/7
EMERGENCY ASSISTANCE
SALES • TECH • ROADSIDE

WE'RE HERE. ANYTIME, EVERY TIME.

- Reach us anytime — literally — via our live customer support line.
- Drive in to one of our 350 Service Centers.
- Enjoy the first year free when you enroll in our Owner Advantage Roadside Assistance Program.
- See where it all begins with a tour of one of our facilities in Indiana or Oregon. Call 1-800-650-7337 or 1-800-634-0855 to find out more.

	Weight Ratings (Lbs.)					Measurements	Tank Capacity (Gall.) ¹										
	Gross Vehicle	Gross Combined ²	Front Gross Axle	Rear Gross Axle	Tag Axle		Wheelbase	Overall Length	Overall Height (with A/C) (add 5" for satellite option)	Interior Height	Interior Width	Exterior Width	Gray Tank	Black Tank	Fresh Tank	LP Tank ³	Fuel Tank
Bishop IV																	
ISL 425	45,160	55,160	15,160	20,000	10,000	220"	39' 2"	12' 6"	84"	96"	100.5"	70	40	100	25	150	
ISM 500	50,160	60,160	15,160	23,000	12,000	220"	39' 2"	12' 6"	84"	96"	100.5"	70	40	100	25	150	
Cheshire IV																	
ISL 425	45,160	55,160	15,160	20,000	10,000	266"	42' 11"	12' 6"	84"	96"	100.5"	70	40	100	25	150	
ISM 500	50,160	60,160	15,160	23,000	12,000	266"	42' 11"	12' 6"	84"	96"	100.5"	70	40	100	25	150	
Nottingham IV																	
ISL 425	45,160	55,160	15,160	20,000	10,000	278.25"	43' 10"	12' 6"	84"	96"	100.5"	70	40	100	25	150	
ISM 500	50,160	60,160	15,160	23,000	12,000	278.25"	43' 10"	12' 6"	84"	96"	100.5"	70	40	100	25	150	
Squire IV																	
ISL 425	45,160	55,160	15,160	20,000	10,000	278.25"	43' 10"	12' 6"	84"	96"	100.5"	70	40	100	25	150	
ISM 500	50,160	60,160	15,160	23,000	12,000	278.25"	43' 10"	12' 6"	84"	96"	100.5"	70	40	100	25	150	
Stafford IV																	
ISM 500	50,160	60,160	15,160	23,000	12,000	290"	44' 11"	12' 6"	84"	96"	100.5"	70	40	100	25	150	
Yorkshire IV																	
ISM 500	50,160	60,160	15,160	23,000	12,000	290"	44' 11"	12' 6"	84"	96"	100.5"	70	40	100	25	150	
Regal IV																	
ISM 500	50,160	60,160	15,160	23,000	12,000	290"	44' 11"	12' 6"	84"	96"	100.5"	70	40	100	25	150	

¹Towing capacity is limited by GCWR; your vehicle's towing capacity is the difference between the GCWR and the actual vehicle weight, including all water, fuel, passengers and cargo. Your towed vehicle should be equipped with auxiliary brakes if the weight of the towed vehicle exceeds 1,000 lbs. Consult your owner's manual for further towing information.

²All tank capacities are estimated based upon calculations provided by the tank manufacturers and represent approximate capacities. The actual "usable capacity" may be greater or less than the estimated capacities based upon fabrication and installation of the tanks.

³Actual filled LP capacity is 80% of listing due to safety shut-off required on tank.

The actual overall length of the recreational vehicle may differ from that indicated in the brochure due to variances in the manufacturing process and/or installed components. The actual length may be greater or less than that indicated. Due to the large variety of options and floorplan arrangements available to our customers, actual weights for each unit can differ significantly. Monaco Coach provides a weight sticker on each unit we produce which includes that unit's tank capacities and approximate weight. Consult your local Monaco Coach dealer for unit availability and further information. The information printed in this brochure reflects product design, fabrication, and component parts at the date of printing. The manufacturer reserves the right, at any time, to make changes in product design or material or component specifications as its sole option, without notice. This

includes the substitution of components of a different brand or trade name which will result in comparable performance. All information printed in this brochure is subject to change after the date of printing. Some features shown or mentioned in this brochure are optional and may only be available in selected floorplans. Photographs may show props or decorations that are not standard equipment on Monaco Coach models. Monaco Coach, the Monaco logo and its design, are registered trademarks. All other products and company names are trademarks and/or registered trademarks of their respective holders. While the color of the motorhome's exterior and the interior fabrics depicted in this sales brochure are fair and reasonable depictions, the colors depicted may not be an exact match of the actual colors because of the variances in photo-processing and variances caused by inserting the photographs

within the sales brochure. Due to product improvements, changes during the model year and/or transcription errors that may occur, information represented within this brochure may not be accurate at the time of your purchase. If certain information is significant to your purchasing decision, please confirm the information with your dealer prior to submitting your order. Component part and appliance manufacturers issue limited warranties covering those portions of the recreational vehicle not covered by the Limited Warranties issued by Monaco Coach Corporation. To learn which specific component parts and appliances are excluded from the Limited Warranties issued by Monaco Coach Corporation, please contact your selling dealership or Monaco Coach Corporation directly, or review the warranty packet inside the recreational vehicle.

BODY CONSTRUCTION

- Heavy-Duty Steel Superstructure with Steel Cage Cockpit Construction
- Seamless One-Piece Molded Crowned Fiberglass Roof
- All-Season Foam Insulated Roof
- Laminated Gel Coat Fiberglass Sidewalls
- Five-Layer Flooring with Two Layers of OSB Flooring
- Deluxe Full-Body Paint
- Panaview™ 1-Piece Front Windshield
- Double-Head Power-Controlled Heated Chrome Exterior Mirrors with Turn Indicator Lights
- Halogen Fog Lamps
- Daytime Running Lights
- Recessed Side Docking Lights
- Roof-Mounted Dual Trumpet Air Horns
- Entry Step Storage
- Insulated Aluminum Baggage Doors with Power Locks
- Lined Pass-Through Storage Compartments
- Interlocking Aluminum Framed Slide-Out Houses
- Side-Hinged Baggage Doors with Electric Locks
- Rear Ladder
- Monaco Full-Length Mudflap with Stainless Steel Logo
- 3M Film Front Mask
- Storage Bay Slide-Out Tray (Complete Pass-Through)

CHASSIS/ENGINE/SUSPENSION

- Roadmaster S-Series Semi-Monocoque Chassis
- Multiplex Chassis Wiring
- Cummins® ISM 07 Emissions 500 HP (11.0L) Engine with Allison® 4000 MH 6-Speed World Transmission and Electronic Shifter
- Torque: (@ 1,300 RPM) 1,550 lbs./ft. Max. Net
- Engine Displacement: 661"/11.0L (Stafford IV, Yorkshire IV & Regal IV Only)
- Cummins® ISL 425 HP (8.8L) Electronic Engine with Fuel Injection; Allison® 3000 MH 6-Speed World Transmission and Electronic Shifter
- Torque: (@ 1,300 RPM) 1,200 lbs./ft. Max. Net
- Engine Displacement: 538"/8.9L (N/A: Stafford IV and Yorkshire IV)
- Dual Fuel Fill
- 200 Amp Alternator
- Rear Axle Ratio: 4.33:1 (Stafford IV, Yorkshire IV & Regal IV Only)
- Rear Axle Ratio: 4.78:1 (N/A: Stafford IV, Yorkshire IV Only)
- Tires: 295/80R/22.5
- Remote Transmission Fill
- Polished Aluminum Wheels
- Full-Cushion Air Glide Suspension with Eight Outboard-Mounted Air Bags and Ten Shock Absorbers
- Automatic Traction Control
- Anti-Locking Braking System with Front Disc Brakes and Rear Drum Brakes with ISL-425 Only
- Anti-Locking Braking System with Front and Rear Disc Brakes (with ISM-500 Only)
- Tag Axle with Anti-Lock Braking System and Drum Brakes
- Two-Stage Jacobs Engine Brake with Toggle Switch on Driver Console
- Prewire for Supplemental Braking System
- Engine Block Heater with Switch on Dash
- Automatic Air Leveling System
- 10,000 Lb. Hitch Receiver and 7/4-Way Trailer Plug
- Remote Inflation Connector

OPTIONS

- Cummins® ISM 07 Emissions 500 HP (11.0L) Engine with Allison® 4000 MH 6-Speed World Transmission and Electronic Shifter
- Torque: (@ 1,300 RPM) 1,550 lbs./ft. Max. Net
- Engine Displacement: 661"/11.0L (Standard on Stafford IV, Yorkshire IV & Regal IV Only)
- 15,000 Lb. Hitch Receiver with Non-Liftable Tag When Tow Vehicle Is Hooked Up
- Dual Leveling Systems (Air/Hydraulic)
- Collision Avoidance System

COCKPIT

- In-Dash AM/FM Stereo with Single CD Player and Auxiliary Plug-In
- Color Rear Vision System with Air Line to Rear Camera Lens
- In-Dash Driver's Message Center
- Integrated Compass and Temperature Gauge
- CB Radio Prep (Cable and Antenna)
- Recessed Slide-Out Dash Workstation
- Electric Cockpit Solar Screens with Blackout Shades
- Power Driver's Side Window
- Adjustable Brake and Accelerator Pedals
- Lighted VIP Smartwheel® with Ignition Key on Column and Controls for Windshield Wipers, ICC and Cruise Control
- Cruise Control Light on Dash
- Six-Way Power Pilot and Co-Pilot Seats with Electric Lumbar; Memory Capabilities on Pilot Side; Power Footrest on Co-Pilot Seat

OPTIONS

- CB Radio
- Multi-Disc CD Player
- Kenwood GPS Navigation System
- Passenger Side GPS Screen
- Bluetooth® HandsFreeLink® System
- TripTek/Smartire Pressure Sensor System
- Sirius Satellite Radio System with FM Modulator (Requires Subscription)
- SEE-Vision Coach Monitoring System
- Winegard Trav'ler Slimline KU/KA Stationary Satellite with 5 LNBS (Receivers Not Included)

ALL ROADS LEAD TO WWW.MONACOCOACH.COM.

Wherever the road takes you, you're never more than a click away from your friends at Monaco. Just go to www.monacocoach.com for all the latest product news, club dates and destinations, a dealer locator function, and factory tour information. You can also e-mail us directly through the site at any time.



	Weight Ratings (Lbs.)					Measurements	Tank Capacity (Gal.) ²										
	Gross Vehicle	Gross Combined ¹	Front Gross Axle	Rear Gross Axle	Tag Axle		Wheelbase	Overall Length	Overall Height (with A/C) (add 5" for satellite option)	Interior Height	Interior Width	Exterior Width	Gray Tank	Black Tank	Fresh Tank	LP Tank ³	Fuel Tank
Bishop IV																	
ISL 425	45,160	55,160	15,160	20,000	10,000	220"	39' 2"	12' 6"	84"	96"	100.5"	70	40	100	25	150	
ISM 500	50,160	60,160	15,160	23,000	12,000	220"	39' 2"	12' 6"	84"	96"	100.5"	70	40	100	25	150	
Cheshire IV																	
ISL 425	45,160	55,160	15,160	20,000	10,000	266"	42' 11"	12' 6"	84"	96"	100.5"	70	40	100	25	150	
ISM 500	50,160	60,160	15,160	23,000	12,000	266"	42' 11"	12' 6"	84"	96"	100.5"	70	40	100	25	150	
Nottingham IV																	
ISL 425	45,160	55,160	15,160	20,000	10,000	278.25"	43' 10"	12' 6"	84"	96"	100.5"	70	40	100	25	150	
ISM 500	50,160	60,160	15,160	23,000	12,000	278.25"	43' 10"	12' 6"	84"	96"	100.5"	70	40	100	25	150	
Squire IV																	
ISL 425	45,160	55,160	15,160	20,000	10,000	278.25"	43' 10"	12' 6"	84"	96"	100.5"	70	40	100	25	150	
ISM 500	50,160	60,160	15,160	23,000	12,000	278.25"	43' 10"	12' 6"	84"	96"	100.5"	70	40	100	25	150	
Stafford IV																	
ISM 500	50,160	60,160	15,160	23,000	12,000	290"	44' 11"	12' 6"	84"	96"	100.5"	70	40	100	25	150	
Yorkshire IV																	
ISM 500	50,160	60,160	15,160	23,000	12,000	290"	44' 11"	12' 6"	84"	96"	100.5"	70	40	100	25	150	
Regal IV																	
ISM 500	50,160	60,160	15,160	23,000	12,000	290"	44' 11"	12' 6"	84"	96"	100.5"	70	40	100	25	150	

¹Towing capacity is limited by GCWR; your vehicle's towing capacity is the difference between the GCWR and the actual vehicle weight, including all water, fuel, passengers and cargo. Your towed vehicle should be equipped with auxiliary brakes if the weight of the towed vehicle exceeds 1,000 lbs. Consult your owner's manual for further towing information.

²All tank capacities are estimated based upon calculations provided by the tank manufacturers and represent approximate capacities. The actual "usable capacity" may be greater or less than the estimated capacities based upon fabrication and installation of the tanks.

³Actual filled LP capacity is 80% of listing due to safety shut-off required on tank.

The actual overall length of the recreational vehicle may differ from that indicated in the brochure due to variances in the manufacturing process and/or installed components. The actual length may be greater or less than that indicated. Due to the large variety of options and floorplan arrangements available to our customers, actual weights for each unit can differ significantly. Monaco Coach provides a weight sticker on each unit we produce which includes that unit's tank capacities and approximate weight. Consult your local Monaco Coach dealer for unit availability and further information. The information printed in this brochure reflects product design, fabrication, and component parts at the date of printing. The manufacturer reserves the right, at any time, to make changes in product design or material or component specifications as its sole option, without notice. This

includes the substitution of components of a different brand or trade name which will result in comparable performance. All information printed in this brochure is subject to change after the date of printing. Some features shown or mentioned in this brochure are optional and may only be available in selected floorplans. Photographs may show props or decorations that are not standard equipment on Monaco Coach models. Monaco Coach, the Monaco logo and its design, are registered trademarks. All other products and company names are trademarks and/or registered trademarks of their respective holders. While the color of the motorhome's exterior and the interior fabrics depicted in this sales brochure are fair and reasonable depictions, the colors depicted may not be an exact match of the actual colors because of the variances in photo-processing and variances caused by inserting the photographs

within the sales brochure. Due to product improvements, changes during the model year and/or transcription errors that may occur, information represented within this brochure may not be accurate at the time of your purchase. If certain information is significant to your purchasing decision, please confirm the information with your dealer prior to submitting your order. Component part and appliance manufacturers issue limited warranties covering those portions of the recreational vehicle not covered by the Limited Warranties issued by Monaco Coach Corporation. To learn which specific component parts and appliances are excluded from the Limited Warranties issued by Monaco Coach Corporation, please contact your selling dealership or Monaco Coach Corporation directly, or review the warranty packet inside the recreational vehicle.

ALL ROADS LEAD TO WWW.MONACOCOACH.COM.

Wherever the road takes you, you're never more than a click away from your friends at Monaco. Just go to www.monacocoach.com for all the latest product news, club dates and destinations, a dealer locator function, and factory tour information. You can also e-mail us directly through the site at any time.



BODY CONSTRUCTION

- › Heavy-Duty Steel Superstructure with Steel Cage Cockpit Construction
- › Seamless One-Piece Molded Crowned Fiberglass Roof
- › All-Season Foam Insulated Roof
- › Laminated Gel Coat Fiberglass Sidewalls
- › Five-Layer Flooring with Two Layers of OSB Flooring
- › Deluxe Full-Body Paint
- › Panaview™ 1-Piece Front Windshield
- › Double-Head Power-Controlled Heated Chrome Exterior Mirrors with Turn Indicator Lights
- › Halogen Fog Lamps
- › Daytime Running Lights
- › Recessed Side Docking Lights
- › Roof-Mounted Dual Trumpet Air Horns
- › Entry Step Storage
- › Insulated Aluminum Baggage Doors with Power Locks
- › Lined Pass-Through Storage Compartments

- › Interlocking Aluminum Framed Slide-Out Houses
- › Side-Hinged Baggage Doors with Electric Locks
- › Rear Ladder
- › Monaco Full-Length Mudflap with Stainless Steel Logo
- › 3M Film Front Mask
- › Storage Bay Slide-Out Tray (Complete Pass-Through)

CHASSIS/ENGINE/SUSPENSION

- › Roadmaster S-Series Semi-Monocoque Chassis
- › Multiplex Chassis Wiring
- › Cummins® ISM 07 Emissions 500 HP (11.0L) Engine with Allison® 4000 MH 6-Speed World Transmission and Electronic Shifter
- › Torque: (@ 1,300 RPM) 1,550 lbs./ft. Max. Net
- › Engine Displacement: 661"/11.0L (Stafford IV, Yorkshire IV & Regal IV Only)
- › Cummins® ISL 425 HP (8.8L) Electronic Engine with Fuel Injection; Allison® 3000 MH 6-Speed World Transmission and Electronic Shifter
- › Torque: (@ 1,300 RPM) 1,200 lbs./ft. Max. Net
- › Engine Displacement: 538"/8.9L (N/A: Stafford IV and Yorkshire IV)
- › Dual Fuel Fill
- › 200 Amp Alternator
- › Rear Axle Ratio: 4.33:1 (Stafford IV, Yorkshire IV & Regal IV Only)
- › Rear Axle Ratio: 4.78:1 (N/A: Stafford IV, Yorkshire IV Only)
- › Tires: 295/80R/22.5
- › Remote Transmission Fill
- › Polished Aluminum Wheels
- › Full-Cushion Air Glide Suspension with Eight Outboard-Mounted Air Bags and Ten Shock Absorbers
- › Automatic Traction Control
- › Anti-Locking Braking System with Front Disc Brakes and Rear Drum Brakes with ISL-425 Only
- › Anti-Locking Braking System with Front and Rear Disc Brakes (with ISM-500 Only)
- › Tag Axle with Anti-Lock Braking System and Drum Brakes
- › Two-Stage Jacobs Engine Brake with Toggle Switch on Driver Console
- › Prewire for Supplemental Braking System

- › Engine Block Heater with Switch on Dash
- › Automatic Air Leveling System
- › 10,000 Lb. Hitch Receiver and 7/4-Way Trailer Plug
- › Remote Inflation Connector

OPTIONS

- › Cummins® ISM 07 Emissions 500 HP (11.0L) Engine with Allison® 4000 MH 6-Speed World Transmission and Electronic Shifter
- › Torque: (@ 1,300 RPM) 1,550 lbs./ft. Max. Net
- › Engine Displacement: 661"/11.0L (Standard on Stafford IV, Yorkshire IV & Regal IV Only)
- › 15,000 Lb. Hitch Receiver with Non-Liftable Tag When Tow Vehicle Is Hooked Up
- › Dual Leveling Systems (Air/Hydraulic)
- › Collision Avoidance System

COCKPIT

- › In-Dash AM/FM Stereo with Single CD Player and Auxiliary Plug-In
- › Color Rear Vision System with Air Line to Rear Camera Lens
- › In-Dash Driver's Message Center
- › Integrated Compass and Temperature Gauge
- › CB Radio Prep (Cable and Antenna)
- › Recessed Slide-Out Dash Workstation
- › Electric Cockpit Solar Screens with Blackout Shades
- › Power Driver's Side Window
- › Adjustable Brake and Accelerator Pedals
- › Lighted VIP Smartwheel® with Ignition Key on Column and Controls for Windshield Wipers, ICC and Cruise Control
- › Cruise Control Light on Dash
- › Six-Way Power Pilot and Co-Pilot Seats with Electric Lumbar; Memory Capabilities on Pilot Side; Power Footrest on Co-Pilot Seat

OPTIONS

- › CB Radio
- › Multi-Disc CD Player
- › Kenwood GPS Navigation System
- › Passenger Side GPS Screen
- › Bluetooth® HandsFreeLink® System
- › TripTek/Smartire Pressure Sensor System
- › Sirius Satellite Radio System with FM Modulator (Requires Subscription)
- › SEE-Vision Coach Monitoring System
- › Winegard Trav'ler Slimline KU/KA Stationary Satellite with 5 LNBS (Receivers Not Included)

APPLIANCES AND ACCESSORIES

- Four-Door Refrigerator with Ice Maker and Raised Panel Doors 12 Cu. Ft.
- Recessed High-Output 2-Burner Cooktop with Flush-Mounted Covers
- Spacesaver Convection Microwave with Touch Control
- Electric TV Antenna
- Prep for Satellite Receiver (Living Room and Bedroom)
- 32" LCD TV in Living Area Overhead (N/A: Squire IV, Stafford IV, Regal IV)
- 37" LCD TV Mounted in Entertainment Center Behind Dinette Area (Cheshire IV Only)
- 42" LCD TV Mounted in Entertainment Center Behind Dinette Area (Stafford IV Only)
- 46" LCD TV in Living Area (Squire IV & Regal IV Only)
- 20" LCD TV with Remote in Bedroom
- Home Theater System with DVD/CD Player in Living Area
- Bedroom DVD Player
- Universal Remote System for Living Area TV
- Washer/Dryer Prep

OPTIONS

- 37" LCD TV in Living Area Overhead (N/A: Squire IV, Stafford IV & Regal IV)
- 37" LCD TV Mounted in Living Area Ceiling (N/A: Squire IV, Stafford IV & Regal IV)
- 26" LCD TV in Living Area Overhead (Cheshire IV, Squire IV, Stafford IV & Regal IV Only)
- 26" LCD TV in Bedroom
- Residential Refrigerator with Water/Ice Dispenser in Door (Includes Additional Batteries)
- 17 Cu. Ft. Four-Door Refrigerator with Raised Panel Doors
- Stainless Steel Refrigerator for 17 Cu. Ft.
- Combination Washer/Dryer
- Stacked Washer/Dryer
- Central Vacuum System (Toe Kick N/A on Squire IV without Full Tile Option)
- Dishwashing Drawer (N/A: Nottingham IV)
- KVH R5 In-Motion Digital Satellite System
- KVH R6 In-Motion Digital Satellite System
- Exterior 32" LCD TV with DVD Player (N/A: Squire IV and Nottingham IV)
- Multi-Satellite High Definition Dish

INTERIOR

- Stained or Natural Solid Oak Cabinetry
- Dinette Wall Cabinet with Solid Surface Top
- Built-in Storage Area for Galley Countertop Covers
- Low-Friction Roller Drawer Guides
- Detailed Wood and Laminate Ceiling with Recess in Living Room
- High-Gloss Solid Surface Countertops Throughout
- Integrated Sinks in Vanity and Galley
- Tumbled Stone Tile Backsplashes in Galley and Bath Areas with Accent Metal Tiles
- Day/Night Shades with Blackouts Throughout
- Mini-Blinds in Galley and Bathroom

- Drawer Organizer in Galley
- Designer Carpeting in Living Area and Bedroom
- Ceramic Tile Flooring in Galley and Bath
- Ceramic Tile Flooring in Cockpit Area
- Raised Panel Door for Private Bath
- Bedspread and Pillows
- Nightstands with Solid Surface Countertops
- Solid Surface Windowsills in Living Area
- Recessed Galley Area Surround Sound Speakers in Ceiling
- Oil Rubbed Bronze Finish on Hardware Throughout

OPTIONS

- Decors: Bahama Wind II, Autumn Sunburst III, Cognac Swirl, Espresso Haze
- Ralph Lauren Decors: Kingsbridge, Black Pearl, Windmere
- Cabinetry Options: Natural, Stained or Classic Cherry, Natural Maple
- Ceiling Fan in Bedroom
- Sculptured Carpet in Living Area
- Full-Tile Living Room Floor
- Plank Flooring in Galley and Bath
- Solar Screens with Blackout Shades Throughout (Manual)

FURNITURE (FLOORPLAN DEPENDENT)

- Legless Side-Slide Solid Surface Dinette Table with Two Freestanding Dinette Chairs and Two Folding Chairs
- Fabric Sleeper Sofa with Drawer
- Leather Sleeper J-Lounge with Drawer
- Queen Mattress (60" X 80")

OPTIONS

- King Bed (72" x 80") (N/A: Squire IV)
- Queen Air Mattress with Digital Remote
- King Air Mattress with Digital Remote (N/A: Squire IV)
- Roadside: Computer Table with Leather Euro-Recliner and Ottoman
- Leather Sleeper Sofa with Drawer
- Leather Hide-a-Bed with Air Mattress
- Leather Hide-a-Bed
- Leather J-Lounge
- Leather Sectional Booth Dinette Ensemble
- Two Folding Chairs with Booth Dinette Ensemble

ELECTRICAL SYSTEMS AND LIGHTS

- 50 Amp 120/240V Distribution Panel and Power Cord with Quick Disconnect
- Onan® 10.0 kW QD Generator on Power Slide-Out Tray with Auxiliary Start Switch and Automatic Temperature Start
- 2,000 Watt Pure Sine Wave Inverter with Auto Gen Start and Auto Temp Start
- Pilot and Co-Pilot Map Lights
- Switches for Bedroom Decorative Lights on Both Sides of Bed

- Lighted Utility Center
- Underhood Utility Light
- 120V Outlet in Private Bath
- 120V Outlet in Bed Base
- 120V Receptacles in Outside Storage Compartment
- Lighted Exterior Storage Compartments
- Two 6V House Batteries
- Two 12V Chassis Batteries
- Battery Remote Fill

- Surge Guard™ Automatic Transfer Switch
- Multiplex 12V Wiring for Dash/Instrument Panel Gauges and Interior of Coach

OPTIONS

- 100 Watt Solar Panel
- Power Cord Reel

PLUMBING AND LP SYSTEMS

- Central Water Filtration System in Service Bay
- Manabloc Water System for Entire Coach
- Insulated Systems Compartment with Easy Access to Hook-Up
- Water Pump Switch in Galley, Bathroom and Service Bay
- China Toilet

- Super Service Center
- Solid Surface Shower with Clear Glass Door
- Shower Head Shut-Off
- Black and Gray Holding Tank Rinsing System
- Outside Faucet with Hot and Cold Water
- Fresh Water Tank with Auto Shut-Off and Auto Fill

OPTIONS

- Power Water Hose Reel
- RV Sani-Con Tank Drainage System
- Insta-Hot® Water System
- Bathtub (N/A: Cheshire IV)

HEATING, VENTS AND AIR CONDITIONING

- Two Low-Profile Ducted 15M BTU Roof Air Conditioners with Wall Thermostat and Heat Pump (Bishop IV Only)
- Three Low-Profile Ducted 15M BTU Roof Air Conditioners with Wall Thermostat and Heat Pump (42' and Longer Floorplans Only)

- Aqua-Hot® Heating System
- Electronic AC/Heat Climate Control System
- Center Defroster Vents
- 12V Attic Fan with Wall Thermostat and Rain Sensors in Private Lavatory and Galley

OPTIONS

- Third Low-Profile Ducted 15,000 BTU Roof Air Conditioner (Bishop IV Only)

WINDOWS, DOORS AND AWNINGS

- Flush-Mounted Radius Dual Pane Safety Glass Dark Tinted Windows
- Front Entry Door with Air Seal, Removable Top Screen and Automatic Front Door Awning
- Keyless Remote Entry System with Pocket Remote

- Topper Awnings on Slide-Out Houses
- Window Awnings on All Slide-Outs' House Windows (N/A: Passenger Side Front Slide-Out Windows)
- Automatic Patio Awning

OPTIONS

- Girard® Automatic Patio Awning
- Girard® Automatic Front Door Awning

SAFETY

- Backup Alarm
- Fire Extinguisher
- Deadbolt Lock on Entrance Door
- Lighted Interior and Exterior Grab Handles
- 120V GFI Protected Circuit (Galley, Bathroom, Storage Bay)
- LP Gas Detector

- Smoke Detector
- Carbon Monoxide Detector
- Integrated Pilot and Co-Pilot Three-Point Seatbelts
- Third Brake Safety Light
- Egress Windows

OPTIONS

- Security Safe
- Deluxe Security Alarm System

APPLIANCES AND ACCESSORIES

- › Four-Door Refrigerator with Ice Maker and Raised Panel Doors 12 Cu. Ft.
- › Recessed High-Output 2-Burner Cooktop with Flush-Mounted Covers
- › Spacesaver Convection Microwave with Touch Control
- › Electric TV Antenna
- › Prep for Satellite Receiver (Living Room and Bedroom)
- › 32" LCD TV in Living Area Overhead (N/A: Squire IV, Stafford IV, Regal IV)
- › 37" LCD TV Mounted in Entertainment Center Behind Dinette Area (Cheshire IV Only)
- › 42" LCD TV Mounted in Entertainment Center Behind Dinette Area (Stafford IV Only)
- › 46" LCD TV in Living Area (Squire IV & Regal IV Only)
- › 20" LCD TV with Remote in Bedroom
- › Home Theater System with DVD/CD Player in Living Area
- › Bedroom DVD Player
- › Universal Remote System for Living Area TV
- › Washer/Dryer Prep

OPTIONS

- › 37" LCD TV in Living Area Overhead (N/A: Squire IV, Stafford IV & Regal IV)
- › 37" LCD TV Mounted in Living Area Ceiling (N/A: Squire IV, Stafford IV & Regal IV)
- › 26" LCD TV in Living Area Overhead (Cheshire IV, Squire IV, Stafford IV & Regal IV Only)
- › 26" LCD TV in Bedroom
- › Residential Refrigerator with Water/Ice Dispenser in Door (Includes Additional Batteries)
- › 17 Cu. Ft. Four-Door Refrigerator with Raised Panel Doors
- › Stainless Steel Refrigerator for 17 Cu. Ft.
- › Combination Washer/Dryer
- › Stacked Washer/Dryer
- › Central Vacuum System (Toe Kick N/A on Squire IV without Full Tile Option)
- › Dishwashing Drawer (N/A: Nottingham IV)
- › KVH R5 In-Motion Digital Satellite System
- › KVH R6 In-Motion Digital Satellite System
- › Exterior 32" LCD TV with DVD Player (N/A: Squire IV and Nottingham IV)
- › Multi-Satellite High Definition Dish

INTERIOR

- › Stained or Natural Solid Oak Cabinetry
- › Dinette Wall Cabinet with Solid Surface Top
- › Built-in Storage Area for Galley Countertop Covers
- › Low-Friction Roller Drawer Guides
- › Detailed Wood and Laminate Ceiling with Recess in Living Room
- › High-Gloss Solid Surface Countertops Throughout
- › Integrated Sinks in Vanity and Galley
- › Tumbled Stone Tile Backsplashes in Galley and Bath Areas with Accent Metal Tiles
- › Day/Night Shades with Blackouts Throughout
- › Mini-Blinds in Galley and Bathroom

- › Drawer Organizer in Galley
- › Designer Carpeting in Living Area and Bedroom
- › Ceramic Tile Flooring in Galley and Bath
- › Ceramic Tile Flooring in Cockpit Area
- › Raised Panel Door for Private Bath
- › Bedspread and Pillows
- › Nightstands with Solid Surface Countertops
- › Solid Surface Windowsills in Living Area
- › Recessed Galley Area Surround Sound Speakers in Ceiling
- › Oil Rubbed Bronze Finish on Hardware Throughout

OPTIONS

- › Decors: Bahama Wind II, Autumn Sunburst III, Cognac Swirl, Espresso Haze
- › Ralph Lauren Decors: Kingsbridge, Black Pearl, Windermere
- › Cabinetry Options: Natural, Stained or Classic Cherry, Natural Maple
- › Ceiling Fan in Bedroom
- › Sculptured Carpet in Living Area
- › Full-Tile Living Room Floor
- › Plank Flooring in Galley and Bath
- › Solar Screens with Blackout Shades Throughout (Manual)

FURNITURE (FLOORPLAN DEPENDENT)

- › Legless Side-Slide Solid Surface Dinette Table with Two Freestanding Dinette Chairs and Two Folding Chairs
- › Fabric Sleeper Sofa with Drawer
- › Leather Sleeper J-Lounge with Drawer
- › Queen Mattress (60" X 80")

OPTIONS

- › King Bed (72" x 80") (N/A: Squire IV)
- › Queen Air Mattress with Digital Remote
- › King Air Mattress with Digital Remote (N/A: Squire IV)
- › Roadside: Computer Table with Leather Euro-Recliner and Ottoman
- › Leather Sleeper Sofa with Drawer
- › Leather Hide-a-Bed with Air Mattress
- › Leather Hide-a-Bed
- › Leather J-Lounge
- › Leather Sectional Booth Dinette Ensemble
- › Two Folding Chairs with Booth Dinette Ensemble

ELECTRICAL SYSTEMS AND LIGHTS

- › 50 Amp 120/240V Distribution Panel and Power Cord with Quick Disconnect
- › Onan® 10.0 kW QD Generator on Power Slide-Out Tray with Auxiliary Start Switch and Automatic Temperature Start
- › 2,000 Watt Pure Sine Wave Inverter with Auto Gen Start and Auto Temp Start
- › Pilot and Co-Pilot Map Lights
- › Switches for Bedroom Decorative Lights on Both Sides of Bed

- › Lighted Utility Center
- › Underhood Utility Light
- › 120V Outlet in Private Bath
- › 120V Outlet in Bed Base
- › 120V Receptacles in Outside Storage Compartment
- › Lighted Exterior Storage Compartments
- › Two 6V House Batteries
- › Two 12V Chassis Batteries
- › Battery Remote Fill

- › Surge Guard™ Automatic Transfer Switch
- › Multiplex 12V Wiring for Dash/Instrument Panel Gauges and Interior of Coach

OPTIONS

- › 100 Watt Solar Panel
- › Power Cord Reel

PLUMBING AND LP SYSTEMS

- › Central Water Filtration System in Service Bay
- › Manabloc Water System for Entire Coach
- › Insulated Systems Compartment with Easy Access to Hook-Up
- › Water Pump Switch in Galley, Bathroom and Service Bay
- › China Toilet

- › Super Service Center
- › Solid Surface Shower with Clear Glass Door
- › Shower Head Shut-Off
- › Black and Gray Holding Tank Rinsing System
- › Outside Faucet with Hot and Cold Water
- › Fresh Water Tank with Auto Shut-Off and Auto Fill

OPTIONS

- › Power Water Hose Reel
- › RV Sani-Con Tank Drainage System
- › Insta-Hot® Water System
- › Bathtub (N/A: Cheshire IV)

HEATING, VENTS AND AIR CONDITIONING

- › Two Low-Profile Ducted 15M BTU Roof Air Conditioners with Wall Thermostat and Heat Pump (Bishop IV Only)
- › Three Low-Profile Ducted 15M BTU Roof Air Conditioners with Wall Thermostat and Heat Pump (42' and Longer Floorplans Only)

- › Aqua-Hot® Heating System
- › Electronic AC/Heat Climate Control System
- › Center Defroster Vents
- › 12V Attic Fan with Wall Thermostat and Rain Sensors in Private Lavatory and Galley

OPTIONS

- › Third Low-Profile Ducted 15,000 BTU Roof Air Conditioner (Bishop IV Only)

WINDOWS, DOORS AND AWNINGS

- › Flush-Mounted Radius Dual Pane Safety Glass Dark Tinted Windows
- › Front Entry Door with Air Seal, Removable Top Screen and Automatic Front Door Awning
- › Keyless Remote Entry System with Pocket Remote

- › Topper Awnings on Slide-Out Houses
- › Window Awnings on All Slide-Outs' House Windows (N/A: Passenger Side Front Slide-Out Windows)
- › Automatic Patio Awning

OPTIONS

- › Girard® Automatic Patio Awning
- › Girard® Automatic Front Door Awning

SAFETY

- › Backup Alarm
- › Fire Extinguisher
- › Deadbolt Lock on Entrance Door
- › Lighted Interior and Exterior Grab Handles
- › 120V GFI Protected Circuit (Galley, Bathroom, Storage Bay)
- › LP Gas Detector

- › Smoke Detector
- › Carbon Monoxide Detector
- › Integrated Pilot and Co-Pilot Three-Point Seatbelts
- › Third Brake Safety Light
- › Egress Windows

OPTIONS

- › Security Safe
- › Deluxe Security Alarm System



MONACO™

DRIVING YOUR DREAM.

Take a closer look, and you'll discover that Monaco Coach Corporation gives you more industry "bests" than any other RV manufacturer. Like the incomparable ride and handling of the Roadmaster Chassis. The convenience of our 3,500 service centers. The peace of mind of 24/7 roadside assistance. The value of Monaco Financial Services. And the online support of monacocoach.com. At Monaco, we've built our reputation by listening to you — and answering to you. And that's the difference that's made us the best.

SIGNATURE SERIES



THE EXECUTIVE™



DYNASTY



CAMELOT™



DIPLOMAT™



KNIGHT™



CAYMAN™



LAPALMA™



MONARCH™





MONACO®

DRIVING YOUR DREAM.

Take a closer look, and you'll discover that Monaco Coach Corporation gives you more industry "bests" than any other RV manufacturer. Like the incomparable ride and handling of the Roadmaster Chassis. The convenience of our 3,500 service centers. The peace of mind of 24/7 roadside assistance. The value of Monaco Financial Services. And the online support of monacocoach.com. At Monaco, we've built our reputation by listening to you — and answering to you. And that's the difference that's made us the best.

SIGNATURE SERIES



THE EXECUTIVE®



DYNASTY®



CAMELOT™



DIPLOMAT®



KNIGHT®



CAYMAN®



LAPALMA®



MONARCH®

