



 KNIGHT
2009

"The journey brings us closer together."



MONACO®

DRIVING YOUR DREAM.





 **KNIGHT[®]**
2009

"The journey brings us closer together."



MONACO[®]

DRIVING YOUR DREAM.





THE JOURNEY'S END.

You've come a long way since your first RV, and now you've reached your destination. The 2009 Knight. With luxurious furnishings and a fully equipped galley, this is one beautiful way to travel. This year, the Knight pampers you with a new, more powerful A/C system. Adjustable Ultraleather™ captain's chairs. A big 37" flatscreen LCD TV (on most models). And a generous new Standard Run Savings Package that includes a central vac, keyless entry, a three-camera rear vision system, and more. Oh yes, you've arrived.





THE JOURNEY'S END.

You've come a long way since your first RV, and now you've reached your destination. The 2009 Knight. With luxurious furnishings and a fully equipped galley, this is one beautiful way to travel. This year, the Knight pampers you with a new, more powerful A/C system. Adjustable Ultraleather™ captain's chairs. A big 37" flatscreen LCD TV (on most models). And a generous new Standard Run Savings Package that includes a central vac, keyless entry, a three-camera rear vision system, and more. Oh yes, you've arrived.





415KQ | NEWPORT CHERRY | FRESCO



MONACO™

DRIVING YOUR DREAM.

There's just something about traveling together that makes every moment more enjoyable. Awakening to the sound of birds chirping outside. Poring over a roadmap, trying to decide where to go next. Stopping at a roadside diner to sample the local cuisine. It's all part of the RV experience. And the 2009 Knight is here to bring it to you. Safely. Comfortably. Hand in hand. So come on, you two. Embark on the journey of a lifetime. And don't be surprised if you find each other along the way.





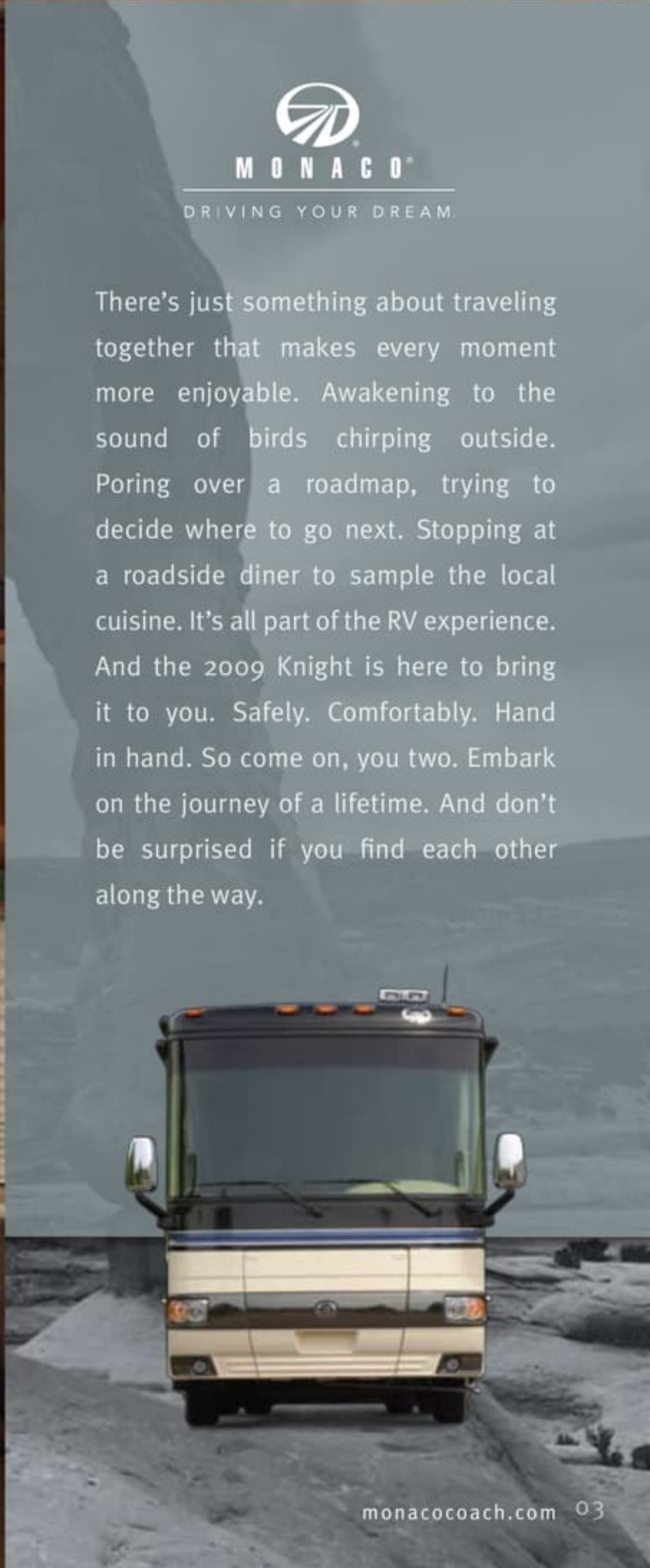
41SKQ | NEWPORT CHERRY | FRESCO



MONACO®

DRIVING YOUR DREAM.

There's just something about traveling together that makes every moment more enjoyable. Awakening to the sound of birds chirping outside. Poring over a roadmap, trying to decide where to go next. Stopping at a roadside diner to sample the local cuisine. It's all part of the RV experience. And the 2009 Knight is here to bring it to you. Safely. Comfortably. Hand in hand. So come on, you two. Embark on the journey of a lifetime. And don't be surprised if you find each other along the way.





SWEET DREAMS.

When you're ready to call it a night, the Knight is ready to work. In the bathroom, you'll find gorgeous ceramic tile flooring, a solid surface lavatory with integrated bowl and backsplash, satin nickel hardware, and a roomy one-piece shower. There's even a second bathroom on the 41DFT. The well-appointed bedroom features a full-size queen bed (comfort air mattress is optional), his and her nightstands, plenty of closet and storage space, and an impressive new 26" LCD television with remote. Sweet.





SWEET DREAMS.

When you're ready to call it a night, the Knight is ready to work. In the bathroom, you'll find gorgeous ceramic tile flooring, a solid surface lavatory with integrated bowl and backsplash, satin nickel hardware, and a roomy one-piece shower. There's even a second bathroom on the 41DFT. The well-appointed bedroom features a full-size queen bed (comfort air mattress is optional), his and her nightstands, plenty of closet and storage space, and an impressive new 26" LCD television with remote. Sweet.





NEWPORT CHEERY | TRISUD



NEWPORT CHERRY | FRESNO



NEWPORT CHERRY



CHAMPAGNE SELECT



FRESCO



ISLAND STYLE II



NEWPORT CHERRY



CHAMPAGNE SELECT



FRESCO



ISLAND STYLE II



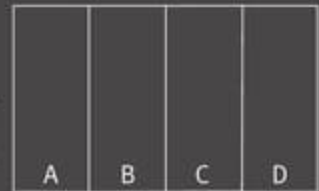
NOW FOR THE HARD PART.

Choosing the Knight was easy. Now, it's time to make it your own. For 2009, our designers are pleased to present a stunning array of standard and optional decors and cabinetry styles. But don't worry. Even if you end up flipping a coin, you always win with Monaco.

TROPICAL PARADISE



Carpet A
Dinette B
Sofa C
Bedsread D



Note: Colors depicted are a reasonable representation though they may not be an exact match of the actual colors due to variances in processing and production. See your dealer for actual fabric and paint chip samples.

NOW FOR THE HARD PART.

Choosing the Knight was easy. Now, it's time to make it your own. For 2009, our designers are pleased to present a stunning array of standard and optional decors and cabinetry styles. But don't worry. Even if you end up flipping a coin, you always win with Monaco.

TROPICAL PARADISE



- Carpet A
- Dinette B
- Sofa C
- Bedsread D

A	B	C	D

Note: Colors depicted are a reasonable representation though they may not be an exact match of the actual colors due to variances in processing and production. See your dealer for actual fabric and paint chip samples.



ROADMASTER RR8R RAISED RAIL CHASSIS

1 The Knight features a gutsy standard Cummins® ISC 360 diesel engine with 1,050 lbs./ft. of torque.



2 A steel cage cockpit gives the Roadmaster chassis incomparable strength and safety in the front of the coach.

3 Every Roadmaster chassis features a steel firewall for added protection in the cockpit.

4 The main rails feature an exclusive raised rail design which provides for larger full pass-through storage bays with flush floors. Other highlights include a 3/8" thick frame rail — compared to the 1/4" of other manufacturers — and a stacked aluminum intercooler and radiator for optimum heat transfer and cooling.

5 Dual fuel fill allows you to fill the tank from either side of the coach, for greater convenience and flexibility at the pump.

6 This steel truss system is engineered as part of the chassis and provides outstanding strength and rigidity plus pass-through storage. In addition, the structure is pre-primed and coated with a rust-inhibiting paint.

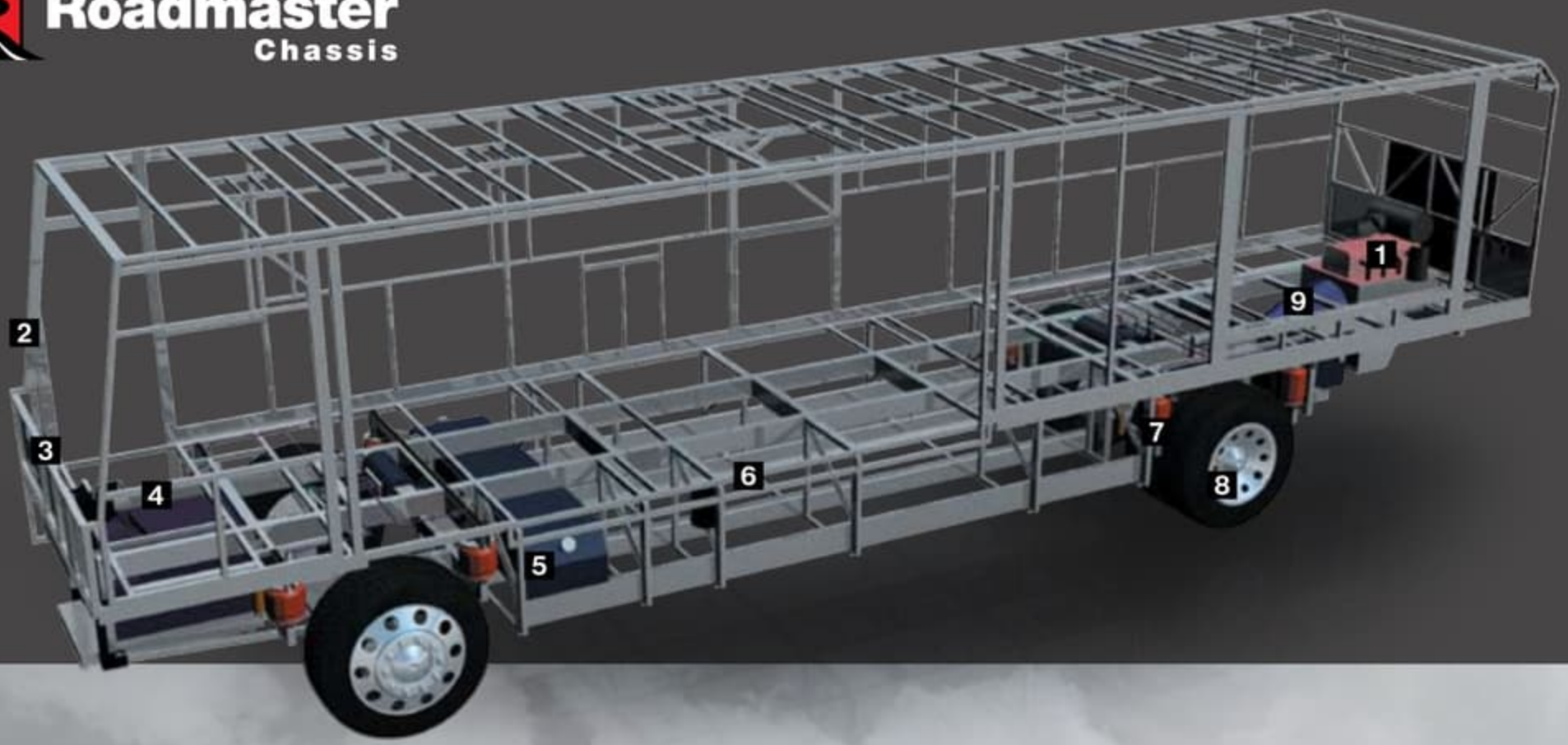
7 Eight air bags work in conjunction with eight gas-charged shock absorbers to prevent road trauma from ever reaching the coach. Ride height sensors continually adjust the air pressure at each axle to maintain a level ride and eliminate nosediving, weight transfer, and floating on curved roads. This system also stabilizes the coach on uneven surfaces.

8 Automatic Traction Control (ATC) eliminates wheel slippage in slick conditions and heightens control. The Anti-Lock Braking System (ABS) gives you superior stopping power, especially on steep grades. Together, these sophisticated systems offer the very best safety on the road.

9 Allison® 3000 MH 6-Speed World Transmission and electronic shifter. The three-point engine mounting system lowers the coach's center of gravity and reduces the amount of vibration that reaches the coach. The mounting also makes the engine easier to service.

A 10,000 lb. tow hitch rating is the highest in its class.





ROADMASTER RR8R RAISED RAIL CHASSIS

1 The Knight features a gutsy standard Cummins® ISC 360 diesel engine with 1,050 lbs./ft. of torque.

2 A steel cage cockpit gives the Roadmaster chassis incomparable strength and safety in the front of the coach.

3 Every Roadmaster chassis features a steel firewall for added protection in the cockpit.

4 The main rails feature an exclusive raised rail design which provides for larger full pass-through storage bays with flush floors. Other highlights include a 3/8" thick frame rail — compared to the 1/4" of other manufacturers — and a stacked aluminum intercooler and radiator for optimum heat transfer and cooling.



5 Dual fuel fill allows you to fill the tank from either side of the coach, for greater convenience and flexibility at the pump.

6 This steel truss system is engineered as part of the chassis and provides outstanding strength and rigidity plus pass-through storage. In addition, the structure is pre-primed and coated with a rust-inhibiting paint.

7 Eight air bags work in conjunction with eight gas-charged shock absorbers to prevent road trauma from ever reaching the coach. Ride height sensors continually adjust the air pressure at each axle to maintain a level ride and eliminate nosediving, weight transfer, and floating on curved roads. This system also stabilizes the coach on uneven surfaces.

8 Automatic Traction Control (ATC) eliminates wheel slippage in slick conditions and heightens control. The Anti-Lock Braking System (ABS) gives you superior stopping power, especially on steep grades. Together, these sophisticated systems offer the very best safety on the road.

9 Allison® 3000 MH 6-Speed World Transmission and electronic shifter. The three-point engine mounting system lowers the coach's center of gravity and reduces the amount of vibration that reaches the coach. The mounting also makes the engine easier to service.

A 10,000 lb. tow hitch rating is the highest in its class.



THE DIFFERENCE IS IN THE DETAILS.

Take the wheel of a luxury motorhome, and you're taking the wheel of the chassis it rides on. That's why the Knight rides exclusively on a Roadmaster chassis that is custom built to deliver the very best diesel motorhome experience. Roadmaster's construction utilizes advanced design and engineering to distribute stress evenly throughout the entire chassis, reducing the possibility of twisting and increasing durability and reliability. The Cushion Air Glide suspension system features eight outboard-mounted air bags and eight shock absorbers, and the system is supported by the largest ping tanks in the industry. It's the ultimate foundation for a luxury ride.

OUTBOARD AIR BAG SUSPENSION

The outboard-mounted air bags are protected by two steel plates and are placed farther apart than the competition, providing a wider and more stable platform for the coach. The active suspension automatically adjusts the pressure of the air bags as you drive and virtually eliminates nosediving and the side-to-side body sway associated with high wind conditions, curvy roads and emergency maneuvers.



ROOF CONSTRUCTION

(top to bottom)

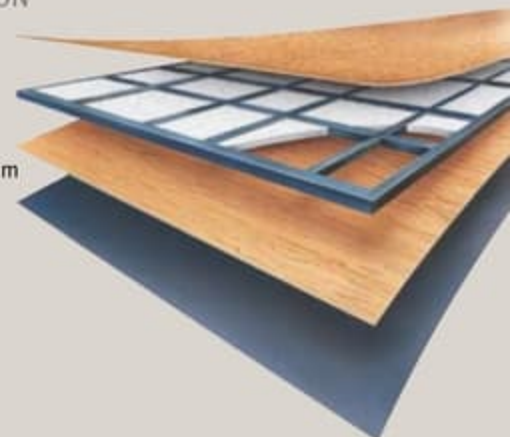
- One-piece peaked fiberglass roof
- Luaun backing
- Thick, tapered bead foam insulation
- Aluminum double I-beam superstructure filled with fiberglass insulation
- Vapor barrier
- Structure foam: thermal insulative barrier
- 1/2" bead foam insulation
- Foam padding for extra insulation
- Padded vinyl ceiling



FLOOR CONSTRUCTION

(top to bottom)

- Structurwood™
- 1-1/2" tube
- High-performance thermal insulation foam
- Luaun
- 3-ply backer



WARRANTIES

12 MONTH/24,000 MILE basic limited warranty

5 YEAR/50,000 MILE limited warranty on aluminum or steel frame structure of sidewall, roof, front and rear cap

3 YEAR/50,000 MILE limited warranty on Roadmaster chassis

See owner's manual for complete details.

THE DIFFERENCE IS IN THE DETAILS.

Take the wheel of a luxury motorhome, and you're taking the wheel of the chassis it rides on. That's why the Knight rides exclusively on a Roadmaster chassis that is custom built to deliver the very best diesel motorhome experience. Roadmaster's construction utilizes advanced design and engineering to distribute stress evenly throughout the entire chassis, reducing the possibility of twisting and increasing durability and reliability. The Cushion Air Glide suspension system features eight outboard-mounted air bags and eight shock absorbers, and the system is supported by the largest ping tanks in the industry. It's the ultimate foundation for a luxury ride.

OUTBOARD AIR BAG SUSPENSION

The outboard-mounted air bags are protected by two steel plates and are placed farther apart than the competition, providing a wider and more stable platform for the coach. The active suspension automatically adjusts the pressure of the air bags as you drive and virtually eliminates nosediving and the side-to-side body sway associated with high wind conditions, curvy roads and emergency maneuvers.



ROOF CONSTRUCTION

(top to bottom)

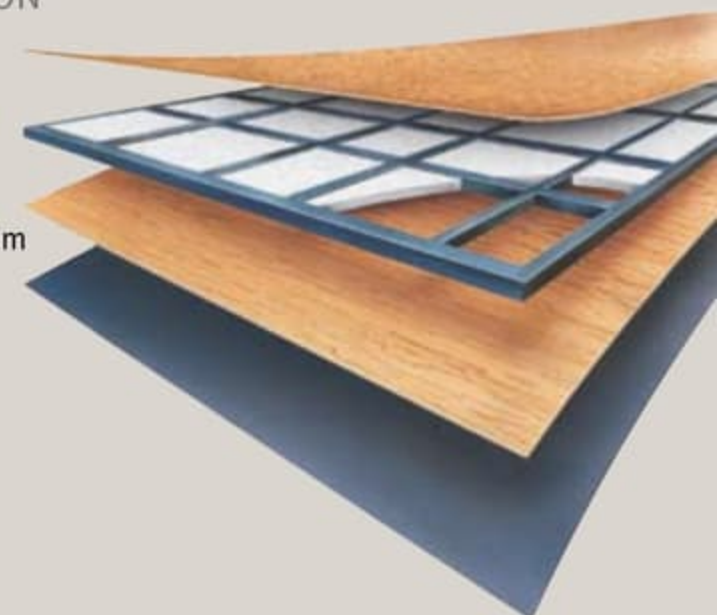
- One-piece peaked fiberglass roof
- Luaun backing
- Thick, tapered bead foam insulation
- Aluminum double I-beam superstructure filled with fiberglass insulation
- Vapor barrier
- Structure foam: thermal insulative barrier
- 1/2" bead foam insulation
- Foam padding for extra insulation
- Padded vinyl ceiling



FLOOR CONSTRUCTION

(top to bottom)

- Structurwood™
- 1-1/2" tube
- High-performance thermal insulation foam
- Luaun
- 3-ply backer



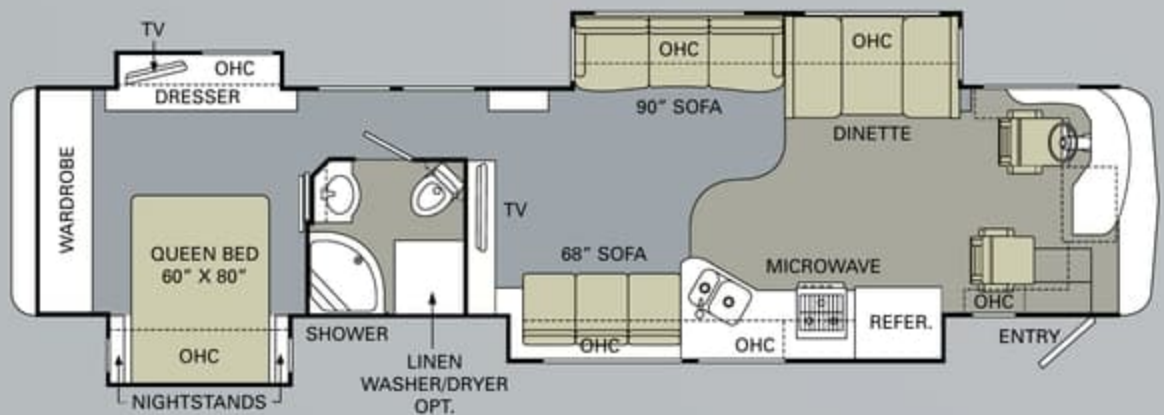
WARRANTIES

12 MONTH/24,000 MILE basic limited warranty

5 YEAR/50,000 MILE limited warranty on aluminum or steel frame structure of sidewall, roof, front and rear cap

3 YEAR/50,000 MILE limited warranty on Roadmaster chassis

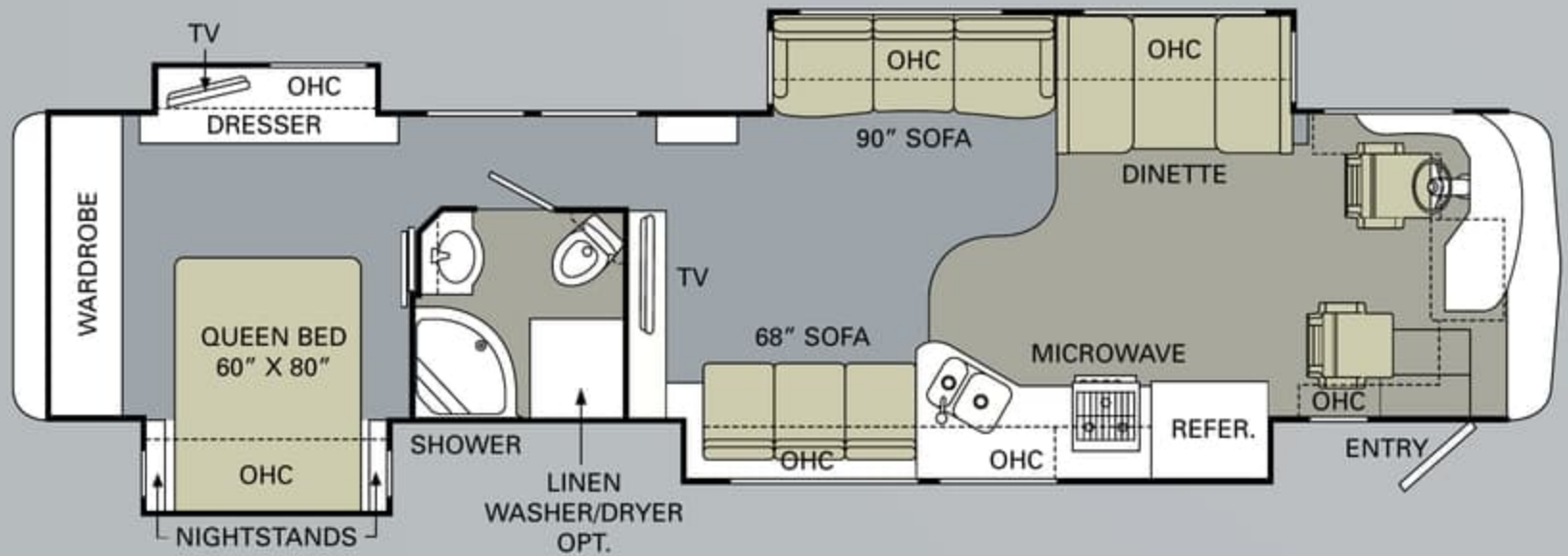
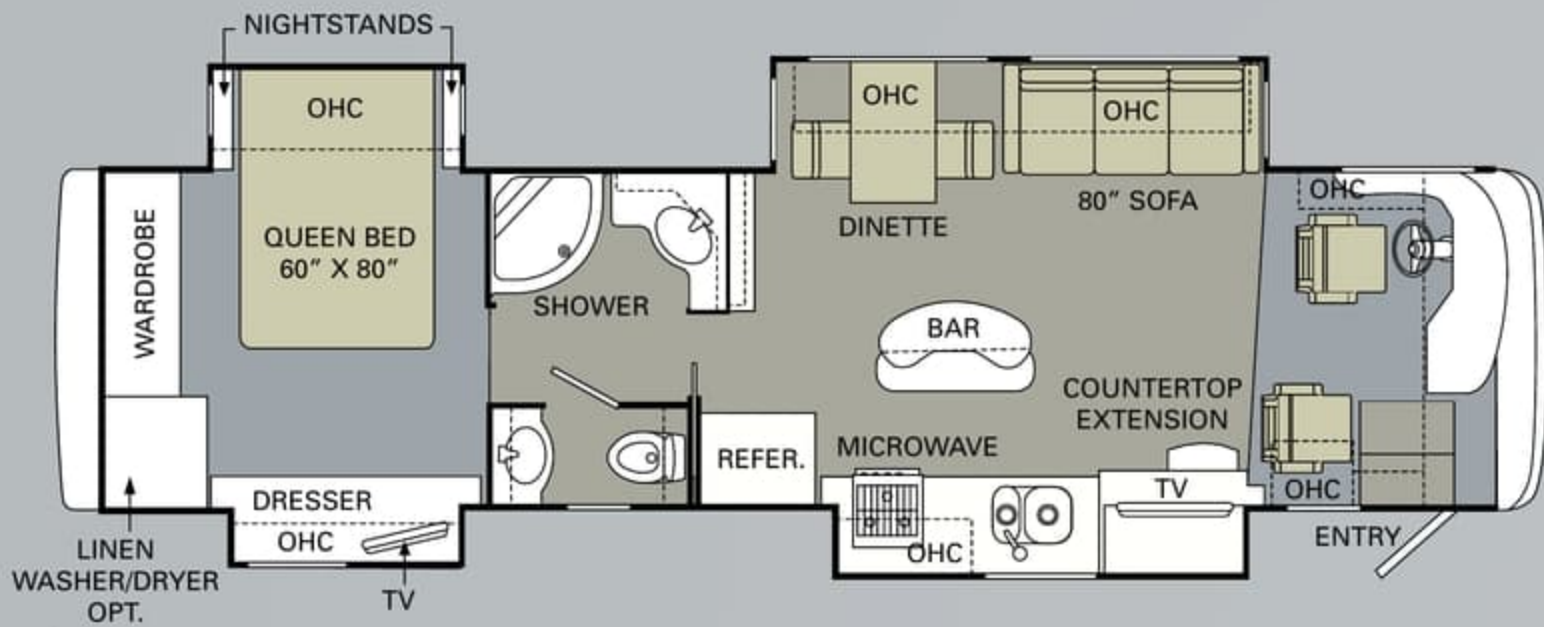
See owner's manual for complete details.



EMERGENCY ASSISTANCE
SALES • TECH • ROADSIDE

WE'RE HERE. ANYTIME, EVERY TIME.

- Reach us anytime — literally — via our live customer support line.
- Drive in to one of our 350 Service Centers.
- Enjoy the first year free when you enroll in our Owner Advantage Roadside Assistance Program.
- See where it all begins with a tour of one of our facilities in Indiana or Oregon. Call 1-800-650-7337 or 1-800-634-0855 to find out more.



EMERGENCY ASSISTANCE
SALES • TECH • ROADSIDE

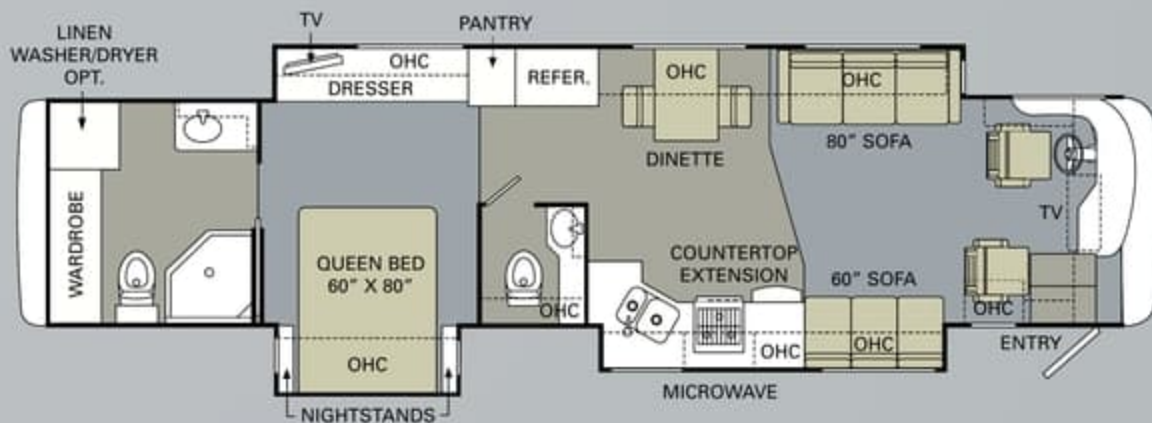
WE'RE HERE. ANYTIME, EVERY TIME.

- Reach us anytime — literally — via our live customer support line.
- Drive in to one of our 350 Service Centers.
- Enjoy the first year free when you enroll in our Owner Advantage Roadside Assistance Program.
- See where it all begins with a tour of one of our facilities in Indiana or Oregon. Call 1-800-650-7337 or 1-800-634-0855 to find out more.

THE VIEW FROM ABOVE.

The 2009 Knight offers something for everyone, with overall lengths ranging from 38 to 41 feet. The 38PKQ and 41SKQ have quad slide-outs for spacious luxury, while the 41DFT features the incomparable space and convenience of a full-wall slide-out and a second bathroom for added privacy.

 TILE  CARPET



41DFT

ALL ROADS LEAD TO WWW.MONACOCOACH.COM.

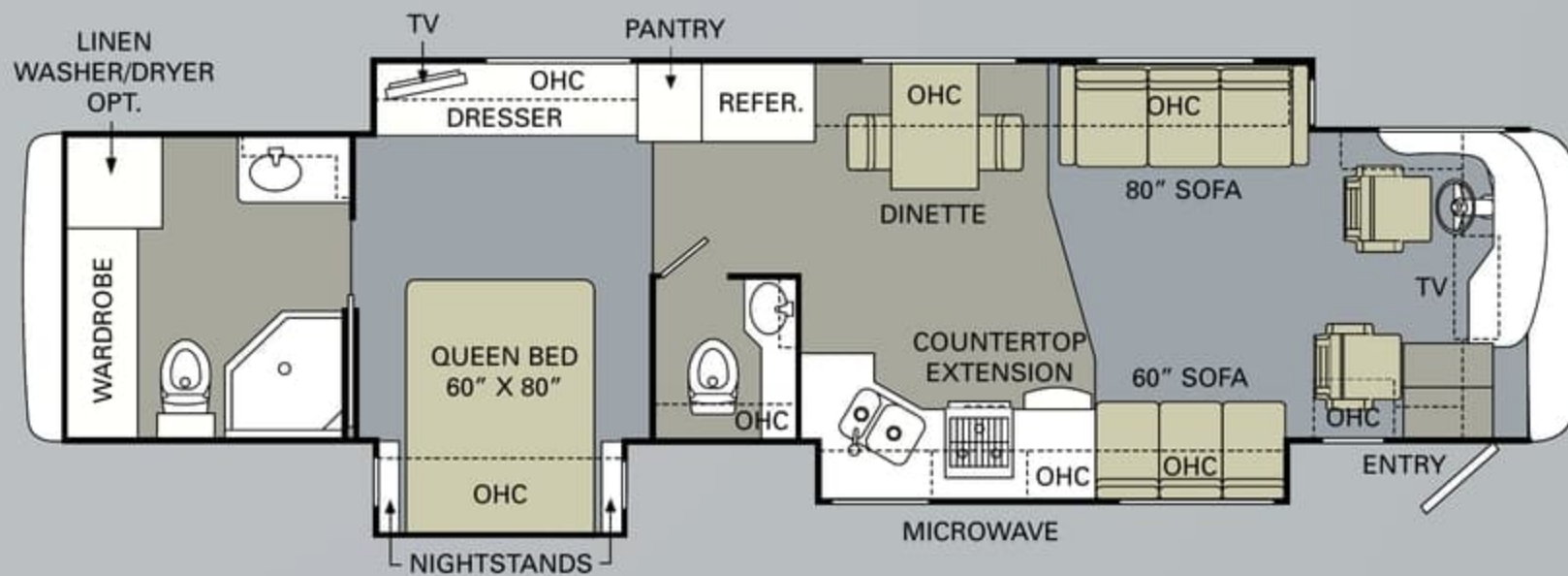
Wherever the road takes you, you're never more than a click away from your friends at Monaco. Just go to www.monacocoach.com for all the latest product news, club dates and destinations, a dealer locator function, and factory tour information. You can also e-mail us directly through the site at any time.



THE VIEW FROM ABOVE.

The 2009 Knight offers something for everyone, with overall lengths ranging from 38 to 41 feet. The 38PKQ and 41SKQ have quad slide-outs for spacious luxury, while the 41DFT features the incomparable space and convenience of a full-wall slide-out and a second bathroom for added privacy.

 TILE  CARPET



41DFT

ALL ROADS LEAD TO WWW.MONACOCOACH.COM.

Wherever the road takes you, you're never more than a click away from your friends at Monaco. Just go to www.monacocoach.com for all the latest product news, club dates and destinations, a dealer locator function, and factory tour information. You can also e-mail us directly through the site at any time.



Due to continuous product improvement, please see the website for the latest in standards and options, specifications, and technical data. *Go to www.monacocoach.com.*

	Weight Ratings (lbs.)				Measurements	Wheelbase	Overall Length	Overall Height (with A/C) (add 5" for satellite option)	Interior Height	Interior Width	Exterior Width	Tank Capacity (Gal.) ²					
	Gross Vehicle	Gross Combined ¹	Front Gross Axle	Rear Gross Axle								Water Heater	Gray Tank	Black Tank	Fresh Tank	LP Tank ³	Fuel Tank
38PKQ	33,000	43,000	13,000	20,000	237"	39' 7"	12' 7"	84"	94.5"	100.5"	10	62	40	100	39	100	
41SKQ	33,000	43,000	13,000	20,000	273"	42' 7"	12' 7"	84"	94.5"	100.5"	10	62	40	100	39	100	
41DFT	33,000	43,000	13,000	20,000	273"	42' 7"	12' 7"	84"	94.5"	100.5"	10	62	40	100	39	100	

¹Towing capacity is limited by GCWR; your vehicle's towing capacity is the difference between the GCWR and the actual vehicle weight, including all water, fuel, passengers and cargo. Your towed vehicle should be equipped with auxiliary brakes if the weight of the towed vehicle exceeds 1,000 lbs. Consult your owner's manual for further towing information.

The actual overall length of the recreational vehicle may differ from that indicated in the brochure due to variances in the manufacturing process and/or installed components. The actual length may be greater or less than that indicated. Due to the large variety of options and floorplan arrangements available to our customers, actual weights for each unit can differ significantly. Monaco Coach provides a weight sticker on each unit we produce which includes that unit's tank capacities and approximate weight. Consult your local Monaco Coach dealer for unit availability and further information. The information printed in this brochure reflects product design, fabrication, and component parts at the date of printing. The manufacturer reserves the right, at any time, to make changes in product design or material or component specifications as its sole option, without notice. This

²All tank capacities are estimated based upon calculations provided by the tank manufacturers and represent approximate capacities. The actual "usable capacity" may be greater or less than the estimated capacities based upon fabrication and installation of the tanks.

includes the substitution of components of a different brand or trade name which will result in comparable performance. All information printed in this brochure is subject to change after the date of printing. Some features shown or mentioned in this brochure are optional and may only be available in selected floorplans. Photographs may show props or decorations that are not standard equipment on Monaco Coach models. Monaco Coach, the Monaco logo and its design, are registered trademarks. All other products and company names are trademarks and/or registered trademarks of their respective holders. While the color of the motorhome's exterior and the interior fabrics depicted in this sales brochure are fair and reasonable depictions, the colors depicted may not be an exact match of the actual colors because of the variances in photo-processing and variances caused by inserting the photographs

³Actual filled LP capacity is 80% of listing due to safety shut-off required on tank.

within the sales brochure. Due to product improvements, changes during the model year and/or transcription errors that may occur, information represented within this brochure may not be accurate at the time of your purchase. If certain information is significant to your purchasing decision, please confirm the information with your dealer prior to submitting your order. Component part and appliance manufacturers issue limited warranties covering those portions of the recreational vehicle not covered by the Limited Warranties issued by Monaco Coach Corporation. To learn which specific component parts and appliances are excluded from the Limited Warranties issued by Monaco Coach Corporation, please contact your selling dealership or Monaco Coach Corporation directly, or review the warranty packet inside the recreational vehicle.

BODY CONSTRUCTION

- Steel Cage Cockpit Construction
- Peaked One-Piece Fiberglass Roof with Fiberglass Insulation
- Panaview™ 1-Piece Front Windshield
- Front and Rear Molded Fiberglass Cap
- One-Piece Generator Access Door
- Electric Flush-Floor Stepwell Cover
- Dual Head Power Controlled Heated Exterior Mirrors with Turn Indicator Lights
- Side-Hinged Baggage Doors

- Interior Rubber Stepwell Storage Bucket
- One-Piece Polyethylene Pass-Through Storage Compartment
- Full-Length Wheel Mud Flaps
- 3M Film Front Mask
- Deluxe Full-Body Paint
- Roof Ladder
- Undercoating

OPTIONS

- Full Pass-Through Storage Bay Slide-Out Tray (Complete Pass-Through)
- Slide-Out Battery Tray
- Standard Run Package: 3-Camera Vision System, Full Pass-Through Storage Bay Slide-Out Tray, Slide-Out Battery Tray, Central Vac, Exterior Tank Monitor Gauges, RV Sani-Con, Power Water Hose Reel, Keyless Entry

Due to continuous product improvement, please see the website for the latest in standards and options, specifications, and technical data. *Go to www.monacocoach.com.*

	Weight Ratings (Lbs.)		Measurements		Tank Capacity (Gal.) ²											
	Gross Vehicle	Gross Combined ¹	Front Gross Axle	Rear Gross Axle	Wheelbase	Overall Length	Overall Height (with A/C) (add 5" for satellite option)	Interior Height	Interior Width	Exterior Width	Water Heater	Gray Tank	Black Tank	Fresh Tank	LP Tank ³	Fuel Tank
38PKQ	33,000	43,000	13,000	20,000	237"	39' 7"	12' 7"	84"	94.5"	100.5"	10	62	40	100	39	100
41SKQ	33,000	43,000	13,000	20,000	273"	42' 7"	12' 7"	84"	94.5"	100.5"	10	62	40	100	39	100
41DFT	33,000	43,000	13,000	20,000	273"	42' 7"	12' 7"	84"	94.5"	100.5"	10	62	40	100	39	100

¹Towing capacity is limited by GCWR; your vehicle's towing capacity is the difference between the GCWR and the actual vehicle weight, including all water, fuel, passengers and cargo. Your towed vehicle should be equipped with auxiliary brakes if the weight of the towed vehicle exceeds 1,000 lbs. Consult your owner's manual for further towing information.

The actual overall length of the recreational vehicle may differ from that indicated in the brochure due to variances in the manufacturing process and/or installed components. The actual length may be greater or less than that indicated. Due to the large variety of options and floorplan arrangements available to our customers, actual weights for each unit can differ significantly. Monaco Coach provides a weight sticker on each unit we produce which includes that unit's tank capacities and approximate weight. Consult your local Monaco Coach dealer for unit availability and further information. The information printed in this brochure reflects product design, fabrication, and component parts at the date of printing. The manufacturer reserves the right, at any time, to make changes in product design or material or component specifications as its sole option, without notice. This

²All tank capacities are estimated based upon calculations provided by the tank manufacturers and represent approximate capacities. The actual "usable capacity" may be greater or less than the estimated capacities based upon fabrication and installation of the tanks.

includes the substitution of components of a different brand or trade name which will result in comparable performance. All information printed in this brochure is subject to change after the date of printing. Some features shown or mentioned in this brochure are optional and may only be available in selected floorplans. Photographs may show props or decorations that are not standard equipment on Monaco Coach models. Monaco Coach, the Monaco logo and its design, are registered trademarks. All other products and company names are trademarks and/or registered trademarks of their respective holders. While the color of the motorhome's exterior and the interior fabrics depicted in this sales brochure are fair and reasonable depictions, the colors depicted may not be an exact match of the actual colors because of the variances in photo-processing and variances caused by inserting the photographs

³Actual filled LP capacity is 80% of listing due to safety shut-off required on tank.

within the sales brochure. **Due to product improvements, changes during the model year and/or transcription errors that may occur, information represented within this brochure may not be accurate at the time of your purchase. If certain information is significant to your purchasing decision, please confirm the information with your dealer prior to submitting your order.** Component part and appliance manufacturers issue limited warranties covering those portions of the recreational vehicle not covered by the Limited Warranties issued by Monaco Coach Corporation. To learn which specific component parts and appliances are excluded from the Limited Warranties issued by Monaco Coach Corporation, please contact your selling dealership or Monaco Coach Corporation directly, or review the warranty packet inside the recreational vehicle.

BODY CONSTRUCTION

- › Steel Cage Cockpit Construction
- › Peaked One-Piece Fiberglass Roof with Fiberglass Insulation
- › Panaview™ 1-Piece Front Windshield
- › Front and Rear Molded Fiberglass Cap
- › One-Piece Generator Access Door
- › Electric Flush-Floor Stepwell Cover
- › Dual Head Power Controlled Heated Exterior Mirrors with Turn Indicator Lights
- › Side-Hinged Baggage Doors
- › Interior Rubber Stepwell Storage Bucket
- › One-Piece Polyethylene Pass-Through Storage Compartment
- › Full-Length Wheel Mud Flaps
- › 3M Film Front Mask
- › Deluxe Full-Body Paint
- › Roof Ladder
- › Undercoating

OPTIONS

- › Full Pass-Through Storage Bay Slide-Out Tray (Complete Pass-Through)
- › Slide-Out Battery Tray
- › Standard Run Package: 3-Camera Vision System, Full Pass-Through Storage Bay Slide-Out Tray, Slide-Out Battery Tray, Central Vac, Exterior Tank Monitor Gauges, RV Sani-Con, Power Water Hose Reel, Keyless Entry

CHASSIS/ENGINE/SUSPENSION

- › Roadmaster Raised Rail Chassis RR8R
- › Cummins® ISC 360 Engine with Allison® 3000 MH 6-Speed World Transmission and Electronic Shifter
- › Engine Displacement: 8.3L/506 Cu. In.
- › Torque: 1,050 lbs./ft. Max. Net at 1,400 RPM
- › Aluminum Rear-Mounted Radiator with CAC Cooler
- › Dual Fuel Fill
- › 160 Amp Alternator
- › Rear Axle Ratio: 4:30-1
- › Radial Tires: 275/70R/22.5
- › Polished Aluminum Wheels
- › Cushion Air-Glide Suspension with Eight Outboard-Mounted Air Bags and Eight Shock Absorbers
- › Anti-Lock Braking System with Full Air Brake
- › Automatic Traction Control
- › Variable Geometry Turbo Exhaust Brake
- › Auto Slack Adjusters
- › Prewire for Supplemental Braking System
- › Engine Block Heater
- › Automatic Hydraulic Leveling System
- › 10,000 Lb. Hitch Receiver with Dual Connector 4-Pin or 7-Pin

COCKPIT

- › Automotive Dash with Silver Graphite Metallic Instrumentation Panel
- › In-Dash AM/FM/CD Stereo Radio with Sirius-Ready Compatibility, iPod Control, Aux-in-Conn, SD Card Slot and Weather Band
- › Rear Vision System with LCD Screen
- › Adjustable Brake and Accelerator Pedals
- › Intermittent Windshield Wipers
- › 4-Spoke Steering Wheel with Horn Pad and Logo
- › Air Horns
- › Ultraleather™ Six-Way Power Pilot Seat
- › Ultraleather™ Six-Way Power Co-Pilot Seat with Powered Footrest

OPTIONS

- › Sirius Radio Satellite System
- › 3-Camera Rear Vision System with LCD Screen
- › GPS System
- › In-Dash Driver's Message Center
- › Power Windshield and Manual Driver/Passenger Solar Screens with Blackout Shades (Required)

APPLIANCES AND ACCESSORIES

- › Norcold® 12 Cu. Ft. 2-Way 4-Door Refrigerator with Ice Maker
- › High-Output 3-Sealed Burner Cooktop without Oven
- › Spacesaver Convection Microwave with Touch Control
- › 32" Flatscreen LCD TV in Front Cockpit Overhead (41DFT)
- › 37" Flatscreen LCD TV in Living Area Hutch (Replaces Front Cockpit TV) (41SKQ)
- › 37" Flatscreen LCD TV in Center of Coach Facing Living Area (Replaces Front Cockpit TV) (38PKQ)
- › 26" LCD Color TV with Remote Control in Bedroom
- › Home Theater System
- › Exterior Hook-Ups for DSS Dish and Cable
- › CB Prep
- › Digital Satellite System Prep
- › Interior Cable TV Hook-Up and Telephone Jacks
- › Exterior Gas Line Hook-Up for LP Accessories
- › Washer/Dryer Prep

OPTIONS

- › High-Output 3-Sealed-Burner Range with Oven
- › Combination Washer/Dryer
- › Dometic Sidewise 14 Cu. Ft. 2-Way Refrigerator with Ice Dispenser in the Door (N/A: 38PKQ, 41DFT)
- › Stainless Steel Package (Includes Stainless Steel Refrigerator and Microwave)
- › Bedroom DVD Player
- › Central Vacuum
- › R5 KVH In-Motion Satellite (Does Not Include Receivers)
- › Fireplace with Hardwood Frame (41SKQ Only)
- › Multi-Satellite HD KU/KA Dish (DIRECTV® Wineguard® Stationary Operation Only) (Does Not Include Receivers)
- › Exterior Entertainment Center (32" LCD/AM/FM/CD Radio with Two Speakers) (41DFT Only)
- › High-Definition Cinema Package (Sound Bar with DVD, Wireless Subwoofer and Blue Ray Player) (N/A: 41DFT)

CHASSIS/ENGINE/SUSPENSION

- › Roadmaster Raised Rail Chassis RR8R
- › Cummins® ISC 360 Engine with Allison® 3000 MH 6-Speed World Transmission and Electronic Shifter
- › Engine Displacement: 8.3L/506 Cu. In.
- › Torque: 1,050 lbs./ft. Max. Net at 1,400 RPM
- › Aluminum Rear-Mounted Radiator with CAC Cooler
- › Dual Fuel Fill
- › 160 Amp Alternator
- › Rear Axle Ratio: 4:30-1
- › Radial Tires: 275/70R/22.5
- › Polished Aluminum Wheels
- › Cushion Air-Glide Suspension with Eight Outboard-Mounted Air Bags and Eight Shock Absorbers
- › Anti-Lock Braking System with Full Air Brake
- › Automatic Traction Control
- › Variable Geometry Turbo Exhaust Brake
- › Auto Slack Adjusters
- › Prewire for Supplemental Braking System
- › Engine Block Heater
- › Automatic Hydraulic Leveling System
- › 10,000 Lb. Hitch Receiver with Dual Connector 4-Pin or 7-Pin

COCKPIT

- › Automotive Dash with Silver Graphite Metallic Instrumentation Panel
- › In-Dash AM/FM/CD Stereo Radio with Sirius-Ready Compatibility, iPod Control, Aux-in-Conn, SD Card Slot and Weather Band
- › Rear Vision System with LCD Screen
- › Adjustable Brake and Accelerator Pedals
- › Intermittent Windshield Wipers
- › 4-Spoke Steering Wheel with Horn Pad and Logo
- › Air Horns
- › Ultraleather™ Six-Way Power Pilot Seat
- › Ultraleather™ Six-Way Power Co-Pilot Seat with Powered Footrest

OPTIONS

- › Sirius Radio Satellite System
- › 3-Camera Rear Vision System with LCD Screen
- › GPS System
- › In-Dash Driver's Message Center
- › Power Windshield and Manual Driver/Passenger Solar Screens with Blackout Shades (Required)

APPLIANCES AND ACCESSORIES

- › Norcold® 12 Cu. Ft. 2-Way 4-Door Refrigerator with Ice Maker
- › High-Output 3-Sealed Burner Cooktop without Oven
- › Spacesaver Convection Microwave with Touch Control
- › 32" Flatscreen LCD TV in Front Cockpit Overhead (41DFT)
- › 37" Flatscreen LCD TV in Living Area Hutch (Replaces Front Cockpit TV) (41SKQ)
- › 37" Flatscreen LCD TV in Center of Coach Facing Living Area (Replaces Front Cockpit TV) (38PKQ)
- › 26" LCD Color TV with Remote Control in Bedroom
- › Home Theater System
- › Exterior Hook-Ups for DSS Dish and Cable
- › CB Prep
- › Digital Satellite System Prep
- › Interior Cable TV Hook-Up and Telephone Jacks
- › Exterior Gas Line Hook-Up for LP Accessories
- › Washer/Dryer Prep

OPTIONS

- › High-Output 3-Sealed-Burner Range with Oven
- › Combination Washer/Dryer
- › Dometic Sidewise 14 Cu. Ft. 2-Way Refrigerator with Ice Dispenser in the Door (N/A: 38PKQ, 41DFT)
- › Stainless Steel Package (Includes Stainless Steel Refrigerator and Microwave)
- › Bedroom DVD Player
- › Central Vacuum
- › R5 KVH In-Motion Satellite (Does Not Include Receivers)
- › Fireplace with Hardwood Frame (41SKQ Only)
- › Multi-Satellite HD KU/KA Dish (DIRECTV® Wineguard® Stationary Operation Only) (Does Not Include Receivers)
- › Exterior Entertainment Center (32" LCD/AM/FM/CD Radio with Two Speakers) (41DFT Only)
- › High-Definition Cinema Package (Sound Bar with DVD, Wireless Subwoofer and Blue Ray Player) (N/A: 41DFT)

INTERIOR

- Raised Panel Hardwood Cabinet Doors
- Refrigerator Raised Panel Hardwood Inserts
- Heavy-Duty Ball-Bearing Drawer Guides
- Satin Nickel Finish Cabinetry Hardware and Bath Accessories
- Polished Radius Solid Surface Kitchen Countertop with Stainless Steel Sink with Two Sink Covers
- Solid Surface Radius Profile Bath Lavatory Countertop with Integrated Bowl
- All Other Countertops Laminated, with Solid Surface Edge
- Solid Surface Kitchen Galley and Bathroom Lavatory Backsplash with Decorative Glass Insert
- Ceramic Tile in Kitchen and Bath
- Tile Entry Floor
- Full Tile in Living Room (38PKQ Only)
- Textured Style Nylon Carpeting with Pad in Living Area and Bedroom
- Hardwood Slide-Out Fascia with Decorative Corner Blocks and Center Block
- Decorative Glass Doors for Living Room Hutch Cabinets (41SKQ Only)
- Hall Cabinet (41SKQ Only)
- Hardwood Raised Panel Bathroom Door
- Oversized Rear Wardrobe Closet with Deluxe Mirror Door Frames Satin Nickel, with Decorative Hardwood Header
- Bedroom Wardrobe Slide-Out Foot of Bed
- Decorative Window Valances
- Day/Night Pleated Blackout Shades in Living Area and Bedroom, EZ Lift Mini Blinds in Kitchen and Private Bath
- Soil Repellent Protection on Fabric
- Center Island (38PKQ Only)
- Pullout Countertop Extension with Drawers and Corian® Top (N/A: 41SKQ)

OPTIONS

- Decors: Island Style II, Fresco, Tropical Paradise
- Full Tile in Living Room (N/A: 38PKQ)
- Wood Choice: Newport Cherry, Champagne Select

FURNITURE

- Queen Bed with Overhead Cabinet and Nightstands (60" x 80")
- Arched Back Wood Booth Dinette with Side-Sliding Dinette Tabletop (41SKQ)
- Freestanding Dinette with Full-Length Wall Cabinet and Two Freestanding Chairs (41DFT)
- Wood Pedestal Dinette Table with Extension and Two Freestanding Chairs (38PKQ Only)
- Roadside: Fabric Easy Bed Sofa
- Curbside: Fabric Easy Bed Sofa (N/A: 38PKQ)
- Queen Bed Select Comfort Air Mattress
- Roadside: Ultraleather™ Easy Bed Sofa
- Roadside: Fabric Hide-A-Bed Sofa with Air Mattress
- Roadside: Ultraleather™ Hide-A-Bed with Air Mattress
- Roadside: Wraparound Computer Desk with Ultraleather™ Euro-Recliner (41SKQ)
- Roadside: Ultraleather™ Booth Dinette Ensemble with Easy Bed Sofa (41SKQ)
- Roadside: Ultraleather™ Sectional Hide-A-Bed Sofa with Air Mattress (38PKQ)
- Roadside: (2) Leather Euro-Recliners with Table (41SKQ)
- Curbside: Ultraleather™ Easy Bed Sofa (N/A: 38PKQ)
- Curbside: Ultraleather™ Hide-A-Bed Sofa with Air Mattress (41SKQ)
- Freestanding Dinette with Full-Length Wall Cabinet and Two Freestanding Chairs (N/A: 38PKQ, 41DFT)

OPTIONS

OPTIONS

ELECTRICAL SYSTEMS AND LIGHTS

- 50 Amp 120V Distribution Panel and Power Cord
- Energy Management System
- 2,000 Watt Inverter
- Onan® 8.0 kW QD Diesel Generator
- Four 6V House Batteries
- Two 12V Heavy-Duty Chassis Batteries
- Battery Disconnect Switch at Front Door
- Porch Light and Exterior Step Light on Same Switch
- Exterior Power Entry Step with Light
- Interior Stepwell Entry Step Lights
- Lights in Outside Storage Compartments
- 120V Receptacles in Outside Storage Compartment
- Underhood Utility Light
- Convenience Center in Hallway
- Decorative Lighting
- Exterior Tank Monitor Gauge in Wet Bay

INTERIOR

- › Raised Panel Hardwood Cabinet Doors
- › Refrigerator Raised Panel Hardwood Inserts
- › Heavy-Duty Ball-Bearing Drawer Guides
- › Satin Nickel Finish Cabinetry Hardware and Bath Accessories
- › Polished Radius Solid Surface Kitchen Countertop with Stainless Steel Sink with Two Sink Covers
- › Solid Surface Radius Profile Bath Lavatory Countertop with Integrated Bowl
- › All Other Countertops Laminated, with Solid Surface Edge
- › Solid Surface Kitchen Galley and Bathroom Lavatory Backsplash with Decorative Glass Insert
- › Ceramic Tile in Kitchen and Bath
- › Tile Entry Floor
- › Full Tile in Living Room (38PKQ Only)
- › Textured Style Nylon Carpeting with Pad in Living Area and Bedroom
- › Hardwood Slide-Out Fascia with Decorative Corner Blocks and Center Block
- › Decorative Glass Doors for Living Room Hutch Cabinets (41SKQ Only)
- › Hall Cabinet (41SKQ Only)
- › Hardwood Raised Panel Bathroom Door
- › Oversized Rear Wardrobe Closet with Deluxe Mirror Door Frames Satin Nickel, with Decorative Hardwood Header
- › Bedroom Wardrobe Slide-Out Foot of Bed
- › Decorative Window Valances
- › Day/Night Pleated Blackout Shades in Living Area and Bedroom, EZ Lift Mini Blinds in Kitchen and Private Bath
- › Soil Repellent Protection on Fabric
- › Center Island (38PKQ Only)
- › Pullout Countertop Extension with Drawers and Corian® Top (N/A: 41SKQ)

OPTIONS

- › Decors: Island Style II, Fresco, Tropical Paradise
- › Full Tile in Living Room (N/A: 38PKQ)
- › Wood Choice: Newport Cherry, Champagne Select

FURNITURE

- › Queen Bed with Overhead Cabinet and Nightstands (60" x 80")
- › Arched Back Wood Booth Dinette with Side-Sliding Dinette Tabletop (41SKQ)
- › Freestanding Dinette with Full-Length Wall Cabinet and Two Freestanding Chairs (41DFT)
- › Wood Pedestal Dinette Table with Extension and Two Freestanding Chairs (38PKQ Only)
- › Roadside: Fabric Easy Bed Sofa
- › Curbside: Fabric Easy Bed Sofa (N/A: 38PKQ)
- › Queen Bed Select Comfort Air Mattress
- › Roadside: Ultraleather™ Easy Bed Sofa
- › Roadside: Fabric Hide-A-Bed Sofa with Air Mattress
- › Roadside: Ultraleather™ Hide-A-Bed with Air Mattress
- › Roadside: Wraparound Computer Desk with Ultraleather™ Euro-Recliner (41SKQ)
- › Roadside: Ultraleather™ Booth Dinette Ensemble with Easy Bed Sofa (41SKQ)
- › Roadside: Ultraleather™ Sectional Hide-A-Bed Sofa with Air Mattress (38PKQ)
- › Roadside: (2) Leather Euro-Recliners with Table (41SKQ)
- › Curbside: Ultraleather™ Easy Bed Sofa (N/A: 38PKQ)
- › Curbside: Ultraleather™ Hide-A-Bed Sofa with Air Mattress (41SKQ)
- › Freestanding Dinette with Full-Length Wall Cabinet and Two Freestanding Chairs (N/A: 38PKQ, 41DFT)

OPTIONS

OPTIONS

ELECTRICAL SYSTEMS AND LIGHTS

- › 50 Amp 120V Distribution Panel and Power Cord
- › Energy Management System
- › 2,000 Watt Inverter
- › Onan® 8.0 kW QD Diesel Generator
- › Four 6V House Batteries
- › Two 12V Heavy-Duty Chassis Batteries
- › Battery Disconnect Switch at Front Door
- › Porch Light and Exterior Step Light on Same Switch
- › Exterior Power Entry Step with Light
- › Interior Stepwell Entry Step Lights
- › Lights in Outside Storage Compartments
- › 120V Receptacles in Outside Storage Compartment
- › Underhood Utility Light
- › Convenience Center in Hallway
- › Decorative Lighting
- › Exterior Tank Monitor Gauge in Wet Bay

PLUMBING AND LP SYSTEMS

- Single Lever Kitchen Faucet with Pullout Sprayer
- Bath Lavatory Faucet
- Central Water Filtration System
- Demand Water System and Water Pump
- Water Pump Switch in Convenience Center, Kitchen Galley and Service Bay Area
- 10-Gallon LP Gas/Electric Water Heater with Electronic Ignition, DSI
- Winterization Valving System
- Water Heater Bypass Valving
- China Toilet Electronic Silent Plus (41DFT Rear and 41SKQ)
- China Toilet Aqua-Magic (N/A: 41SKQ)
- Holding Tank Rinsing System
- Insulated Systems Compartment with Easy Access to Hook-Up
- Shower inside Wet Bay with Hot/Cold Water
- Gravity and Pressurized Water Fill
- One-Piece Neo-Angled Shower with Obscured Glass Door (41DFT)
- One-Piece Round Shower (N/A: 41DFT)
- Satin Nickel Shower Faucet with Slide Bar and Shut-Off Valve at Shower Head

OPTIONS

- RV Sani-Con 1 System—Holding Tank Flush System (This Option Replaces Contained Storage Area for Sewer Hose)
- Power Water Hose Reel
- Neo-Angled Bathtub

HEATING, VENTS AND AIR CONDITIONING

- Dual 15M BTU Roof Air Conditioner with Ducted Air, Heat Pumps and Digital Thermostat Control
- Electronic Ignition Furnace (31M and 20M BTU)
- Electronic AC/Heat Climate Control System
- Kitchen Powered 12V Attic Fan with Wall Control of Automatic Dome and Fan Power
- Bath Powered 12V Attic Fan with Wall Control of Automatic Dome and Fan Power
- 12V Heater in Wet Bay

OPTIONS

- Ceiling Fan in Bedroom

WINDOWS, DOORS AND AWNINGS

- Radius Flush-Mounted Dual Pane Safety Glass Dark Tinted Slider Windows
- Automatic Front Door Awning
- Front Entry Door with Removable Screen and Anti-Skid Steps
- Automatic Patio Awning
- Topper Slide-Out Awnings Living Area and Bedroom
- Window Awnings on All Slide-Out House Windows except Kitchen Windows and Slide-Out Windows under Patio Awning
- Tinted Skylight in Bathroom with Protecta Glaze

OPTIONS

- Keyless Entry (Key Fob Only)

SAFETY

- Fire Extinguisher (10BC)
- Deadbolt Lock on Entrance Door
- 120V GFI Protected Circuit Kitchen, Bath and Exterior
- LP Gas Detector
- Smoke Detector
- Carbon Monoxide Detector
- Driver and Passenger Three-Point Seatbelts (Wall Mounted)
- Third Brake Safety Light
- Egress Window (1 in Bedroom)

PLUMBING AND LP SYSTEMS

- › Single Lever Kitchen Faucet with Pullout Sprayer
- › Bath Lavatory Faucet
- › Central Water Filtration System
- › Demand Water System and Water Pump
- › Water Pump Switch in Convenience Center, Kitchen Galley and Service Bay Area
- › 10-Gallon LP Gas/Electric Water Heater with Electronic Ignition, DSI
- › Winterization Valving System
- › Water Heater Bypass Valving
- › China Toilet Electronic Silent Plus (41DFT Rear and 41SKQ)
- › China Toilet Aqua-Magic (N/A: 41SKQ)
- › Holding Tank Rinsing System
- › Insulated Systems Compartment with Easy Access to Hook-Up
- › Shower inside Wet Bay with Hot/Cold Water
- › Gravity and Pressurized Water Fill
- › One-Piece Neo-Angled Shower with Obscured Glass Door (41DFT)
- › One-Piece Round Shower (N/A: 41DFT)
- › Satin Nickel Shower Faucet with Slide Bar and Shut-Off Valve at Shower Head

OPTIONS

- › RV Sani-Con 1 System—Holding Tank Flush System (This Option Replaces Contained Storage Area for Sewer Hose)
- › Power Water Hose Reel
- › Neo-Angled Bathtub

HEATING, VENTS AND AIR CONDITIONING

- › Dual 15M BTU Roof Air Conditioner with Ducted Air, Heat Pumps and Digital Thermostat Control
- › Electronic Ignition Furnace (31M and 20M BTU)
- › Electronic AC/Heat Climate Control System
- › Kitchen Powered 12V Attic Fan with Wall Control of Automatic Dome and Fan Power
- › Bath Powered 12V Attic Fan with Wall Control of Automatic Dome and Fan Power
- › 12V Heater in Wet Bay

OPTIONS

- › Ceiling Fan in Bedroom

WINDOWS, DOORS AND AWNINGS

- › Radius Flush-Mounted Dual Pane Safety Glass Dark Tinted Slider Windows
- › Automatic Front Door Awning
- › Front Entry Door with Removable Screen and Anti-Skid Steps
- › Automatic Patio Awning
- › Topper Slide-Out Awnings Living Area and Bedroom
- › Window Awnings on All Slide-Out House Windows except Kitchen Windows and Slide-Out Windows under Patio Awning
- › Tinted Skylight in Bathroom with Protecta Glaze

OPTIONS

- › Keyless Entry (Key Fob Only)

SAFETY

- › Fire Extinguisher (10BC)
- › Deadbolt Lock on Entrance Door
- › 120V GFI Protected Circuit Kitchen, Bath and Exterior
- › LP Gas Detector
- › Smoke Detector
- › Carbon Monoxide Detector
- › Driver and Passenger Three-Point Seatbelts (Wall Mounted)
- › Third Brake Safety Light
- › Egress Window (1 in Bedroom)



MONACO™

DRIVING YOUR DREAM.

Take a closer look, and you'll discover that Monaco Coach Corporation gives you more industry "bests" than any other RV manufacturer. Like the incomparable ride and handling of the Roadmaster Chassis. The convenience of our 350 service centers. The peace of mind of 24/7 roadside assistance. The value of Monaco Financial Services. And the online support of monacocoach.com. At Monaco, we've built our reputation by listening to you — and answering to you. And that's the difference that's made us the best.

SIGNATURE SERIES



THE EXECUTIVE™



DYNASTY™



CAMELOT™



DIPLOMAT™



KNIGHT™



CAYMAN™



LAPALMA™



MONARCH™





MONACO®

DRIVING YOUR DREAM.

Take a closer look, and you'll discover that Monaco Coach Corporation gives you more industry "bests" than any other RV manufacturer. Like the incomparable ride and handling of the Roadmaster Chassis. The convenience of our 350 service centers. The peace of mind of 24/7 roadside assistance. The value of Monaco Financial Services. And the online support of monacocoach.com. At Monaco, we've built our reputation by listening to you — and answering to you. And that's the difference that's made us the best.

SIGNATURE SERIES



THE EXECUTIVE®



DYNASTY®



CAMELOT™



DIPLOMAT®



KNIGHT



CAYMAN®



LAPALMA®



MONARCH®

