



 LAPALMA[®]
2009

"Happiness is everywhere we go."



MONACO[®]

DRIVING YOUR DREAM.





 LAPALMA®
2009

"Happiness is everywhere we go."



MONACO®

DRIVING YOUR DREAM.





SMILE, YOU'VE ARRIVED.

The waiting is over. The coach of your dreams has arrived. The 2009 LaPalma. Lavishly equipped with high-end features, this coach is everything you've wished for, and then some. With new full-body paint and painted graphics for longer lasting beauty. Side-hinged baggage doors for easier loading. State-of-the-art LCD televisions, including a widescreen model in the bedroom. And luxury options like a three-camera LCD rear vision system and dual A/C with energy-saving heat pumps. Ahh yes, life is good.





SMILE, YOU'VE ARRIVED.

The waiting is over. The coach of your dreams has arrived. The 2009 LaPalma. Lavishly equipped with high-end features, this coach is everything you've wished for, and then some. With new full-body paint and painted graphics for longer lasting beauty. Side-hinged baggage doors for easier loading. State-of-the-art LCD televisions, including a widescreen model in the bedroom. And luxury options like a three-camera LCD rear vision system and dual A/C with energy-saving heat pumps. Ahh yes, life is good.





36SBD | NEWPORT CHERRY | VINTAGE GOLD



MONACO®

DRIVING YOUR DREAM.

It's been a long time coming. But suddenly, everything in life seems easier. You're struggling less. Smiling more. Having the time of your life. You're driving a LaPalma. Finally, you realize that happiness is not so much a place to be found as a thing you carry with you. A state of mind. A freedom to relax and enjoy yourself. A willingness to embrace whatever's waiting on the next horizon. And as long as you're seeing the country in one of the finest coaches on the road, you'll always be in a happy place.



monacocoach.com



36SBD | NEWPORT CHERRY | VINTAGE GOLD



MONACO®

DRIVING YOUR DREAM.

It's been a long time coming. But suddenly, everything in life seems easier. You're struggling less. Smiling more. Having the time of your life. You're driving a LaPalma. Finally, you realize that happiness is not so much a place to be found as a thing you carry with you. A state of mind. A freedom to relax and enjoy yourself. A willingness to embrace whatever's waiting on the next horizon. And as long as you're seeing the country in one of the finest coaches on the road, you'll always be in a happy place.



monacocoach.com



ROADMASTER RSR RAIL CHASSIS

With the LaPalma Diesel, you enjoy the added assurance of knowing you're riding on a Roadmaster RSR Rail chassis. All Roadmaster chassis are custom designed and built to the exact specifications of each floorplan for best-in-class performance, safety and comfort. The smooth-handling RSR chassis is teamed here with a Cummins[®] ISB-AD 340 HP rear diesel engine for a powerful diesel pusher package that'll take you anywhere you want to go in style.

Our exclusive SmartStructure II truss system is engineered as part of the chassis and provides superior strength, rigidity and balance. To prevent corrosion, the structure is pre-primed and coated with rust-inhibiting paint.

- 1** The steel cage cockpit gives the Roadmaster and Workhorse chassis incomparable strength and safety at the front of the coach.
- 2** Every Roadmaster chassis features a steel firewall for added protection in the cockpit.
- 3** The Allison[®] 2100 MH 6-speed transmission features a pushbutton shift pad.
- 4** Cummins[®] ISB-AD 340 HP diesel engine.
- 5** A 5,000 lb. hitch receiver with dual connector, 4-pin or 7-pin, is prewired for a supplemental braking system that works with your tow vehicle.
- 6** Radial tires (255/70R/22.5) let you drive with peace of mind.

ALL WITHIN REACH.

LaPalma's roomy storage bays feature side-swing doors and full pass-through compartments that are just right for larger items. Compartments are made of one-piece polyethylene for quick and easy wash-downs.

9-LAYER ROOF CONSTRUCTION: (top to bottom)

- One-piece peaked fiberglass roof
- Luau backing
- Thick, tapered bead foam insulation
- Aluminum double I-beam superstructure filled with fiberglass insulation
- Vapor barrier
- Structure foam: thermal insulative barrier
- 1/2" bead foam insulation
- Foam padding for extra insulation
- Padded vinyl ceiling



4-LAYER SIDEWALL CONSTRUCTION: (left to right)

- Smooth gel coat fiberglass wall
- 1-1/2" thick foam insulation
- 1-1/2" x 1-1/2" square tubular aluminum frame
- Interior paneling



4-LAYER FLOOR CONSTRUCTION: (top to bottom)

- Structurwood[™]
- High performance thermal insulation
- 1-1/2" aluminum tube
- Three-ply poly underbelly



WARRANTIES

- 12 MONTH/24,000 MILE basic limited warranty
 - 5 YEAR/50,000 MILE limited warranty on aluminum or steel frame structure of sidewall, roof, front and rear cap
 - 3 YEAR/50,000 MILE limited warranty on Roadmaster chassis
- Applies to certain models. See owner's manual for complete details.



ROADMASTER RSR RAIL CHASSIS

With the LaPalma Diesel, you enjoy the added assurance of knowing you're riding on a Roadmaster RSR Rail chassis. All Roadmaster chassis are custom designed and built to the exact specifications of each floorplan for best-in-class performance, safety and comfort. The smooth-handling RSR chassis is teamed here with a Cummins® ISB-AD 340 HP rear diesel engine for a powerful diesel pusher package that'll take you anywhere you want to go in style.

Our exclusive SmartStructure II truss system is engineered as part of the chassis and provides superior strength, rigidity and balance. To prevent corrosion, the structure is pre-primed and coated with rust-inhibiting paint.

- 1** The steel cage cockpit gives the Roadmaster and Workhorse chassis incomparable strength and safety at the front of the coach.
- 2** Every Roadmaster chassis features a steel firewall for added protection in the cockpit.
- 3** The Allison® 2100 MH 6-speed transmission features a pushbutton shift pad.
- 4** Cummins® ISB-AD 340 HP diesel engine.
- 5** A 5,000 lb. hitch receiver with dual connector, 4-pin or 7-pin, is prewired for a supplemental braking system that works with your tow vehicle.
- 6** Radial tires (255/70R/22.5) let you drive with peace of mind.

ALL WITHIN REACH.

LaPalma's roomy storage bays feature side-swing doors and full pass-through compartments that are just right for larger items. Compartments are made of one-piece polyethylene for quick and easy wash-downs.

9-LAYER ROOF CONSTRUCTION: (top to bottom)

- One-piece peaked fiberglass roof
- Luaun backing
- Thick, tapered bead foam insulation
- Aluminum double I-beam superstructure filled with fiberglass insulation
- Vapor barrier
- Structure foam: thermal insulative barrier
- 1/2" bead foam insulation
- Foam padding for extra insulation
- Padded vinyl ceiling



4-LAYER SIDEWALL CONSTRUCTION: (left to right)

- Smooth gel coat fiberglass wall
- 1-1/2" thick foam insulation
- 1-1/2" x 1-1/2" square tubular aluminum frame
- Interior paneling



4-LAYER FLOOR CONSTRUCTION: (top to bottom)

- Structurwood™
- High performance thermal insulation
- 1-1/2" aluminum tube
- Three-ply poly underbelly



WARRANTIES

- 12 MONTH/24,000 MILE basic limited warranty
 - 5 YEAR/50,000 MILE limited warranty on aluminum or steel frame structure of sidewall, roof, front and rear cap
 - 3 YEAR/50,000 MILE limited warranty on Roadmaster chassis
- Applies to certain models. See owner's manual for complete details.

EXTERIOR COLORS, FABRICS AND WOODS | 

NEWPORT CHERRY



CHAMPAGNE SELECT



NOW FOR THE HARD PART.

Choosing the LaPalma was easy. Now, it's time to make it your own. For 2009, our designers are pleased to present a stunning array of standard and optional decors and cabinetry styles. But don't worry. Even if you end up flipping a coin, you always win with Monaco.

NEW AUTUMN TRAIL III



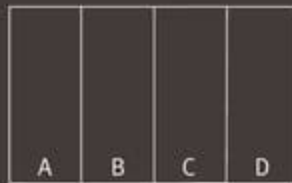
URBAN LOFT II



VINTAGE GOLD



- Carpet A
- Dinette B
- Sofa C
- Bedsread D



Note: Colors depicted are a reasonable representation though they may not be an exact match of the actual colors due to variances in processing and production. See your dealer for actual fabric and paint chip samples.

EXTERIOR COLORS, FABRICS AND WOODS |

NEWPORT CHERRY



CHAMPAGNE SELECT



NOW FOR THE HARD PART.

Choosing the LaPalma was easy. Now, it's time to make it your own. For 2009, our designers are pleased to present a stunning array of standard and optional decors and cabinetry styles. But don't worry. Even if you end up flipping a coin, you always win with Monaco.

NEW AUTUMN TRAIL III



URBAN LOFT II

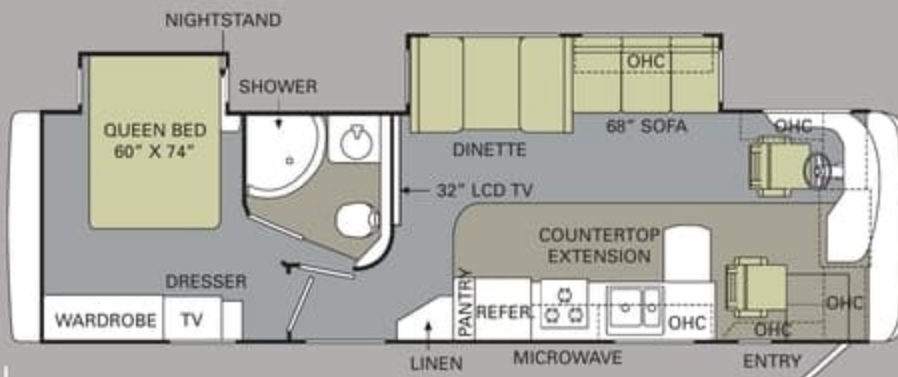
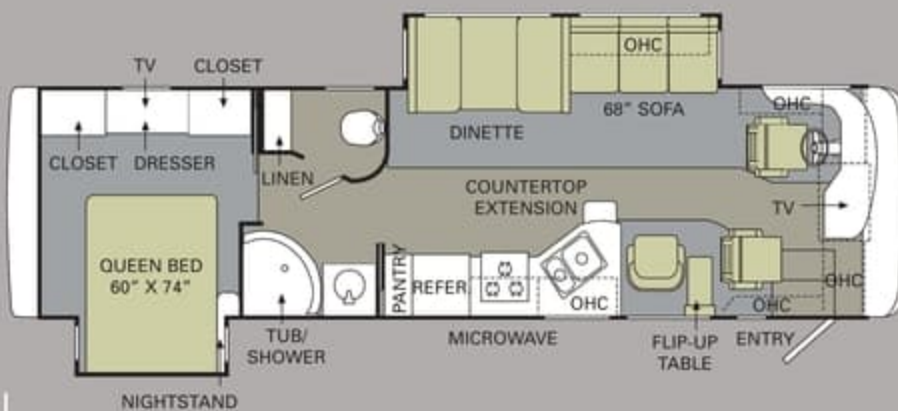
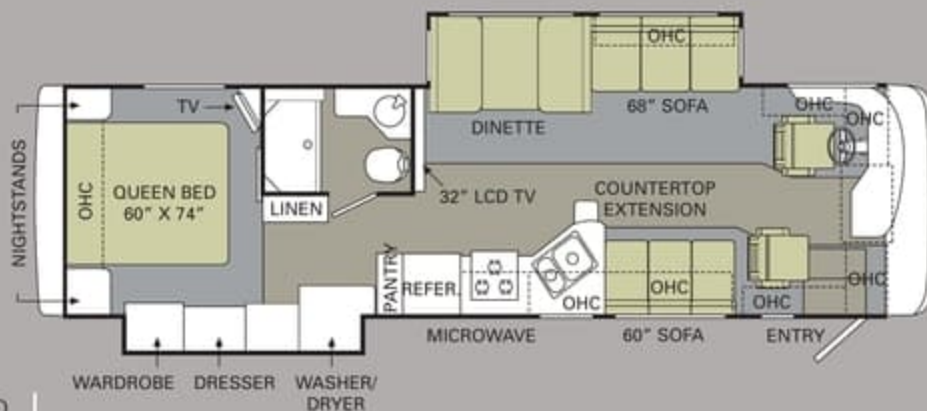


VINTAGE GOLD



Carpet	A			
Dinette	B			
Sofa	C			
Bedspread	D	A	B	C

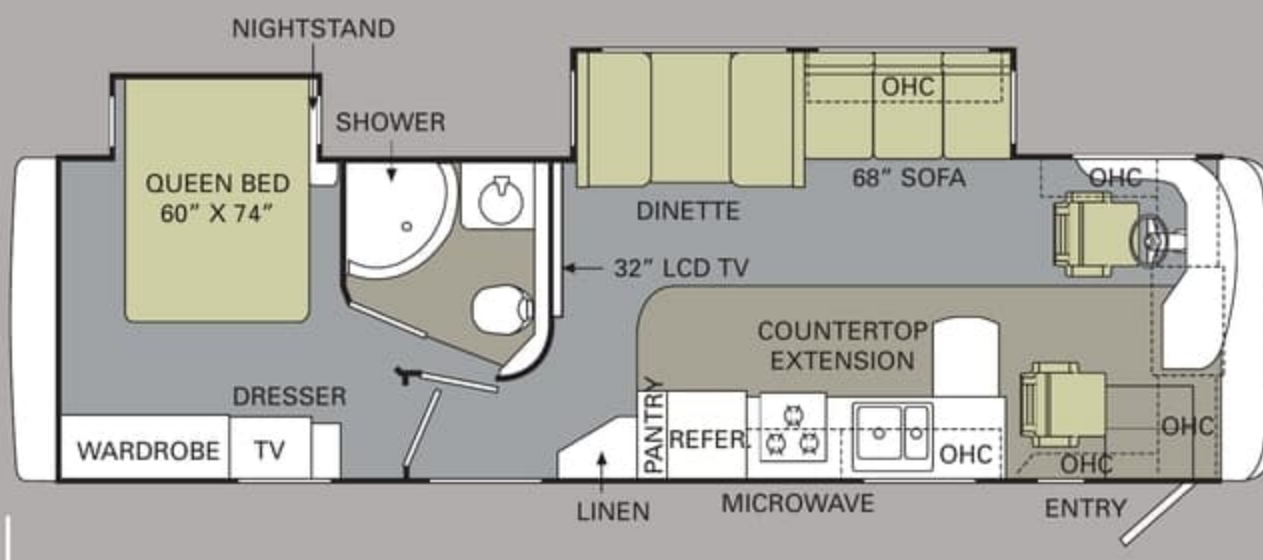
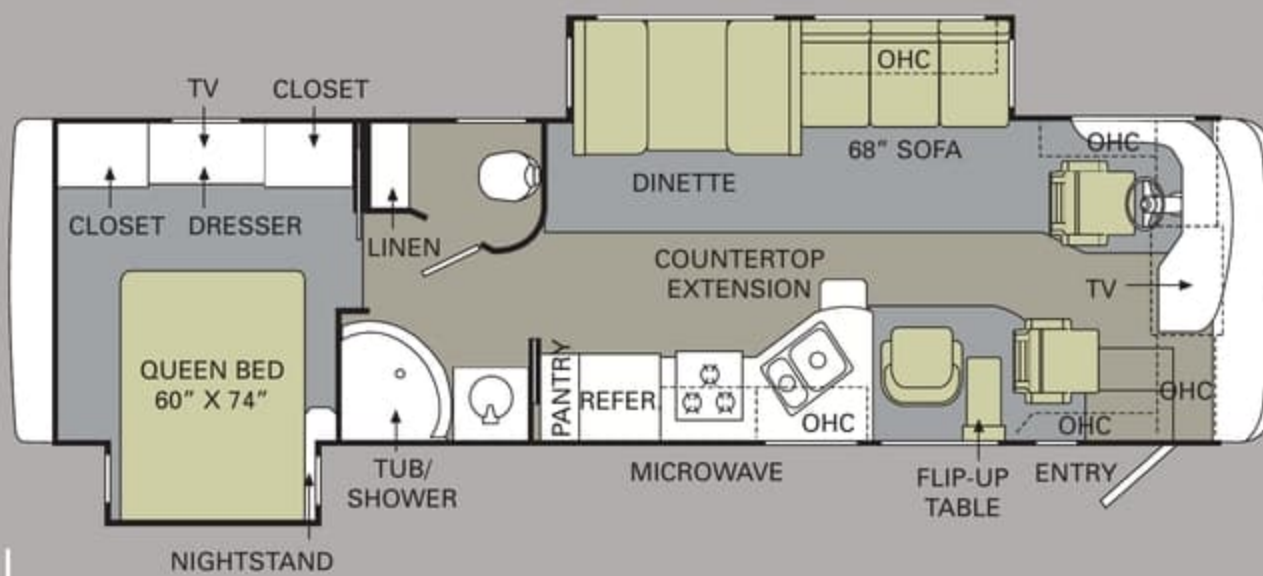
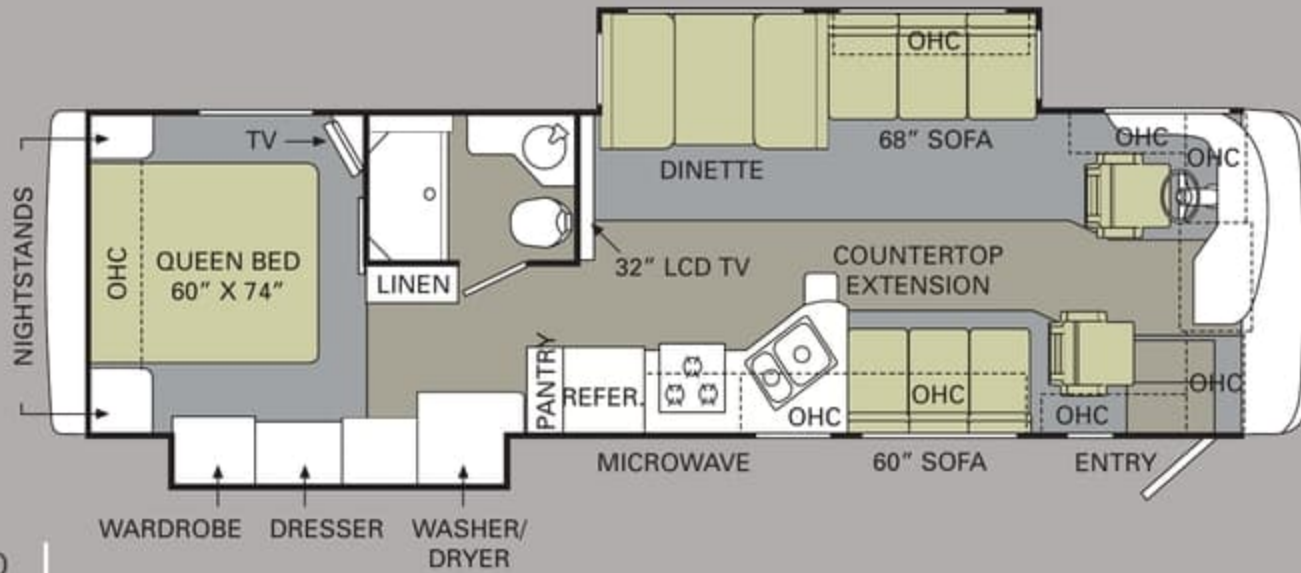
Note: Colors depicted are a reasonable representation though they may not be an exact match of the actual colors due to variances in processing and production. See your dealer for actual fabric and paint chip samples.



EMERGENCY ASSISTANCE
SALES • TECH • ROADSIDE

WE'RE HERE. ANYTIME, EVERY TIME.

- Reach us anytime — literally — via our live customer support line.
- Drive in to one of our 350 Service Centers.
- Enjoy the first year free when you enroll in our Owner Advantage Roadside Assistance Program.
- See where it all begins with a tour of one of our facilities in Indiana or Oregon. Call 1-800-650-7337 or 1-800-634-0855 to find out more.



EMERGENCY ASSISTANCE
SALES • TECH • ROADSIDE

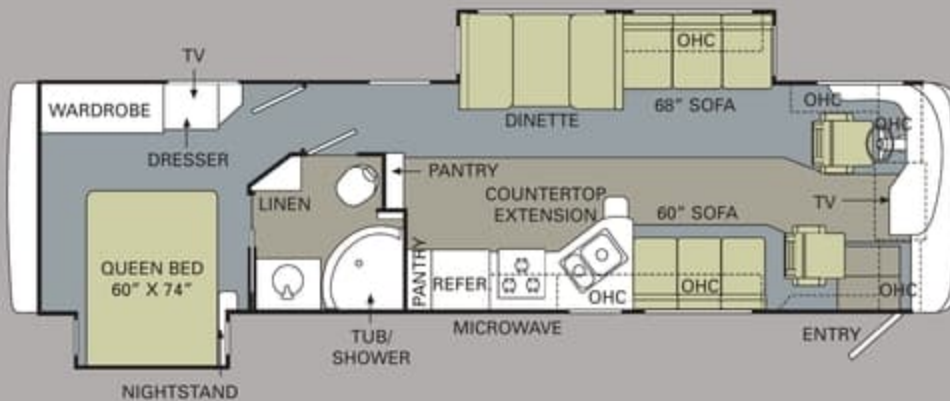
WE'RE HERE. ANYTIME, EVERY TIME.

- Reach us anytime — literally — via our live customer support line.
- Drive in to one of our 350 Service Centers.
- Enjoy the first year free when you enroll in our Owner Advantage Roadside Assistance Program.
- See where it all begins with a tour of one of our facilities in Indiana or Oregon. Call 1-800-650-7337 or 1-800-634-0855 to find out more.

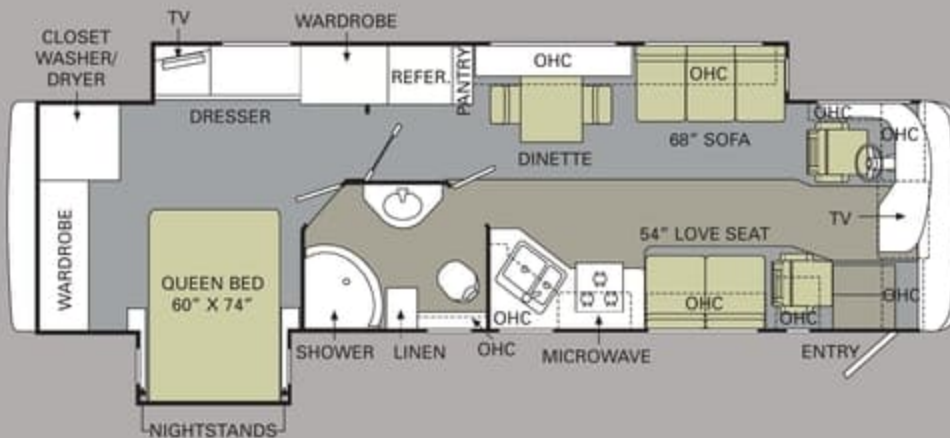
THE VIEW FROM ABOVE.

The LaPalma offers a little something for everyone, with innovative floorplans ranging from 34 to 36 feet. Highlights for 2009 include a full-wall slide-out on the new 36SFD, plus 32" LCD TVs in the center of the coach on the 34SDD and new 34SBD.

 TILE  CARPET



36SBD



36SFD

ALL ROADS LEAD TO WWW.MONACOCOACH.COM.

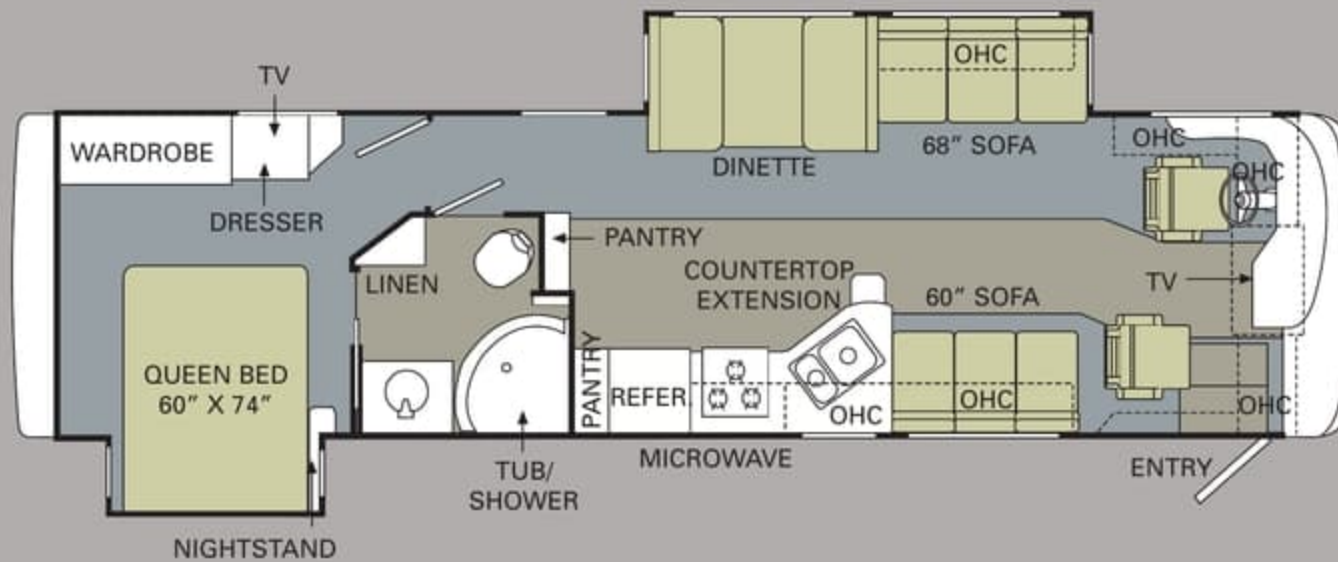
Wherever the road takes you, you're never more than a click away from your friends at Monaco. Just go to www.monacocoach.com for all the latest product news, club dates and destinations, a dealer locator function, and factory tour information. You can also e-mail us directly through the site at any time.



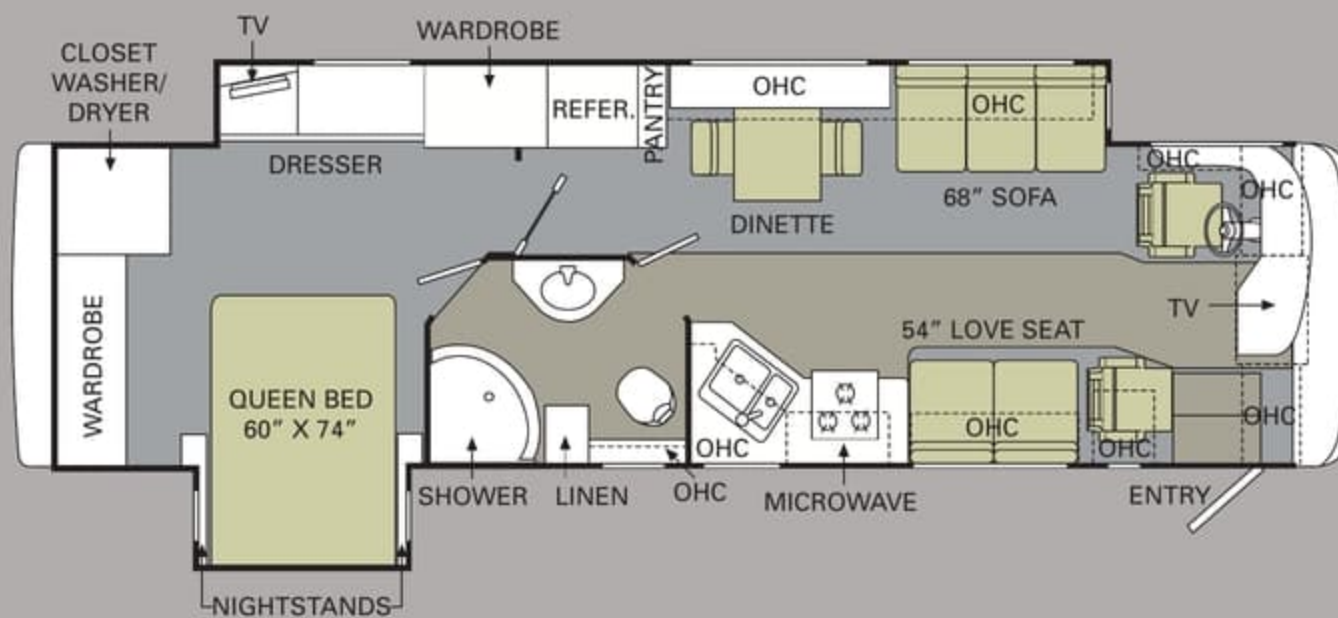
THE VIEW FROM ABOVE.

The LaPalma offers a little something for everyone, with innovative floorplans ranging from 34 to 36 feet. Highlights for 2009 include a full-wall slide-out on the new 36SFD, plus 32" LCD TVs in the center of the coach on the 34SDD and new 34SBD.

 TILE  CARPET



36SBD



36SFD

ALL ROADS LEAD TO WWW.MONACOCOACH.COM.

Wherever the road takes you, you're never more than a click away from your friends at Monaco. Just go to www.monacocoach.com for all the latest product news, club dates and destinations, a dealer locator function, and factory tour information. You can also e-mail us directly through the site at any time.



Due to continuous product improvement, please see the website for the latest in standards and options, specifications, and technical data. **Go to www.monacocoach.com.**

	Weight Ratings (Lbs.)				Measurements		Tank Capacity (Gall.) ¹									
	Gross Vehicle	Gross Combined ²	Front Gross Axle	Rear Gross Axle	Wheelbase	Overall Length	Overall Height (with A/C load 5" for satellite option)	Interior Height	Interior Width	Exterior Width	Water Heater	Gray Tank	Black Tank	Fresh Tank	LP Tank ³	Fuel Tank
34SBD	23,000	28,000	8,500	14,500	192"	35' 6"	12' 9"	84"	96"	100.5"	10	60	40	70	20	75
34PDD	23,000	28,000	8,500	14,500	192"	35' 6"	12' 9"	84"	96"	100.5"	10	60	40	70	20	75
34SDD	23,000	28,000	8,500	14,500	192"	35' 6"	12' 9"	84"	96"	100.5"	10	60	40	70	20	75
36SBD	25,500	30,000	9,500	16,000	216"	37' 6"	12' 9"	84"	96"	100.5"	10	60	40	90	20	75
36SFD	25,500	30,000	9,500	16,000	216"	37' 6"	12' 9"	84"	96"	100.5"	10	60	40	90	20	75

¹Towing capacity is limited by GCWR: your vehicle's towing capacity is the difference between the GCWR and the actual vehicle weight, including all water, fuel, passengers and cargo. Your towed vehicle should be equipped with auxiliary brakes if the weight of the towed vehicle exceeds 1,000 lbs. Consult your owner's manual for further towing information.

The actual overall length of the recreational vehicle may differ from that indicated in the brochure due to variances in the manufacturing process and/or installed components. The actual length may be greater or less than that indicated. Due to the large variety of options and floorplan arrangements available to our customers, actual weights for each unit can differ significantly. Monaco Coach provides a weight sticker on each unit we produce which includes that unit's tank capacities and approximate weight. Consult your local Monaco Coach dealer for unit availability and further information. The information printed in this brochure reflects product design, fabrication, and component parts at the date of printing. The manufacturer reserves the right, at any time, to make changes in product design or material or component specifications as its sole option, without notice. This

²All tank capacities are estimated based upon calculations provided by the tank manufacturers and represent approximate capacities. The actual "usable capacity" may be greater or less than the estimated capacities based upon fabrication and installation of the tanks.

includes the substitution of components of a different brand or trade name which will result in comparable performance. All information printed in this brochure is subject to change after the date of printing. Some features shown or mentioned in this brochure are optional and may only be available in selected floorplans. Photographs may show props or decorations that are not standard equipment on Monaco Coach models. Monaco Coach, the Monaco logo and its design, are registered trademarks. All other products and company names are trademarks and/or registered trademarks of their respective holders. While the color of the motorhome's exterior and the interior fabrics depicted in this sales brochure are fair and reasonable depictions, the colors depicted may not be an exact match of the actual colors because of the variances in photo-processing and variances caused by inserting the photographs

³Actual filled LP capacity is 80% of listing due to safety shut-off required on tank.

within the sales brochure. Due to product improvements, changes during the model year and/or transcription errors that may occur, information represented within this brochure may not be accurate at the time of your purchase. If certain information is significant to your purchasing decision, please confirm the information with your dealer prior to submitting your order. Component part and appliance manufacturers issue limited warranties covering those portions of the recreational vehicle not covered by the Limited Warranties issued by Monaco Coach Corporation. To learn which specific component parts and appliances are excluded from the Limited Warranties issued by Monaco Coach Corporation, please contact your selling dealership or Monaco Coach Corporation directly, or review the warranty packet inside the recreational vehicle.

BODY CONSTRUCTION

- Laminated Sidewall Construction
- Steel Cage Cockpit Construction
- Smooth Gel Coat Fiberglass Exterior Walls
- Front and Rear Molded Fiberglass Caps
- Front-Mounted Mirrors with Power Control Heads and Heat
- One-Piece Generator Access Door
- Rear Engine Doors
- Fiberglass Engine Cover
- Panaview™ 1-Piece Front Windshield
- 84" Interior Height
- Side-Hinged Baggage Doors
- Metal-Hinged Fuel Door with Lock
- Pass-Through Storage Bays under Slide-Outs
- One-Piece Polyethylene Storage Compartment
- Deluxe Full-Body Paint
- Rear Ladder
- Carpeted Electric Flush-Floor Stepwell Cover
- Interior Rubber Entry Step with Stepwell Storage Bucket
- Exterior Single Entry Step
- Undercoating

OPTIONS

- Film Front Protection Mask
- New Chrome Exterior Mirror; 17.5" Chrome Head Exterior Mirror with Power Control Heads and Heat (Required Option with 3-Camera Rear Vision System)
- Standard Run Savings Package: Film Front Protection Mask, 3-Camera Rear Vision System, Home Theater System, Chrome Front-Mounted Mirrors with Power Control Heads and Heat, Six-Way Power Co-Pilot Seat, Central Vacuum System, 600-Watt Inverter, Manual Front Door Awning, 12V Heater in Wet Bay, RV Sani-Con 2 System

Due to continuous product improvement, please see the website for the latest in standards and options, specifications, and technical data. *Go to www.monacocoach.com.*

	Weight Ratings (Lbs.)				Measurements	Tank Capacity (Gal.) ²										
	Gross Vehicle	Gross Combined ¹	Front Gross Axle	Rear Gross Axle		Wheelbase	Overall Length	Overall Height (with A/C) (add 5" for satellite option)	Interior Height	Interior Width	Exterior Width	Water Heater	Gray Tank	Black Tank	Fresh Tank	LP Tank ³
34SBD	23,000	28,000	8,500	14,500	192"	35' 6"	12' 9"	84"	96"	100.5"	10	60	40	70	20	75
34PDD	23,000	28,000	8,500	14,500	192"	35' 6"	12' 9"	84"	96"	100.5"	10	60	40	70	20	75
34SDD	23,000	28,000	8,500	14,500	192"	35' 6"	12' 9"	84"	96"	100.5"	10	60	40	70	20	75
36SBD	25,500	30,000	9,500	16,000	216"	37' 6"	12' 9"	84"	96"	100.5"	10	60	40	90	20	75
36SFD	25,500	30,000	9,500	16,000	216"	37' 6"	12' 9"	84"	96"	100.5"	10	60	40	90	20	75

¹Towing capacity is limited by GCWR; your vehicle's towing capacity is the difference between the GCWR and the actual vehicle weight, including all water, fuel, passengers and cargo. Your towed vehicle should be equipped with auxiliary brakes if the weight of the towed vehicle exceeds 1,000 lbs. Consult your owner's manual for further towing information.

²All tank capacities are estimated based upon calculations provided by the tank manufacturers and represent approximate capacities. The actual "usable capacity" may be greater or less than the estimated capacities based upon fabrication and installation of the tanks.

³Actual filled LP capacity is 80% of listing due to safety shut-off required on tank.

The actual overall length of the recreational vehicle may differ from that indicated in the brochure due to variances in the manufacturing process and/or installed components. The actual length may be greater or less than that indicated. Due to the large variety of options and floorplan arrangements available to our customers, actual weights for each unit can differ significantly. Monaco Coach provides a weight sticker on each unit we produce which includes that unit's tank capacities and approximate weight. Consult your local Monaco Coach dealer for unit availability and further information. The information printed in this brochure reflects product design, fabrication, and component parts at the date of printing. The manufacturer reserves the right, at any time, to make changes in product design or material or component specifications as its sole option, without notice. This

includes the substitution of components of a different brand or trade name which will result in comparable performance. All information printed in this brochure is subject to change after the date of printing. Some features shown or mentioned in this brochure are optional and may only be available in selected floorplans. Photographs may show props or decorations that are not standard equipment on Monaco Coach models. Monaco Coach, the Monaco logo and its design, are registered trademarks. All other products and company names are trademarks and/or registered trademarks of their respective holders. While the color of the motorhome's exterior and the interior fabrics depicted in this sales brochure are fair and reasonable depictions, the colors depicted may not be an exact match of the actual colors because of the variances in photo-processing and variances caused by inserting the photographs

within the sales brochure. Due to product improvements, changes during the model year and/or transcription errors that may occur, information represented within this brochure may not be accurate at the time of your purchase. If certain information is significant to your purchasing decision, please confirm the information with your dealer prior to submitting your order. Component part and appliance manufacturers issue limited warranties covering those portions of the recreational vehicle not covered by the Limited Warranties issued by Monaco Coach Corporation. To learn which specific component parts and appliances are excluded from the Limited Warranties issued by Monaco Coach Corporation, please contact your selling dealership or Monaco Coach Corporation directly, or review the warranty packet inside the recreational vehicle.

BODY CONSTRUCTION

- › Laminated Sidewall Construction
- › Steel Cage Cockpit Construction
- › Smooth Gel Coat Fiberglass Exterior Walls
- › Front and Rear Molded Fiberglass Caps
- › Front-Mounted Mirrors with Power Control Heads and Heat
- › One-Piece Generator Access Door
- › Rear Engine Doors
- › Fiberglass Engine Cover
- › Panaview™ 1-Piece Front Windshield
- › 84" Interior Height
- › Side-Hinged Baggage Doors
- › Metal-Hinged Fuel Door with Lock
- › Pass-Through Storage Bays under Slide-Outs
- › One-Piece Polyethylene Storage Compartment
- › Deluxe Full-Body Paint
- › Rear Ladder
- › Carpeted Electric Flush-Floor Stepwell Cover
- › Interior Rubber Entry Step with Stepwell Storage Bucket
- › Exterior Single Entry Step
- › Undercoating

OPTIONS

- › Film Front Protection Mask
- › New Chrome Exterior Mirror; 17.5" Chrome Head Exterior Mirror with Power Control Heads and Heat (Required Option with 3-Camera Rear Vision System)
- › Standard Run Savings Package: Film Front Protection Mask, 3-Camera Rear Vision System, Home Theater System, Chrome Front-Mounted Mirrors with Power Control Heads and Heat, Six-Way Power Co-Pilot Seat, Central Vacuum System, 600-Watt Inverter, Manual Front Door Awning, 12V Heater in Wet Bay, RV Sani-Con 2 System

CHASSIS/ENGINE/SUSPENSION

- Roadmaster RSR Rail Chassis
- Cummins® ISB-AD 340 HP Low-Torque Engine with Allison® 2100 MH 6-Speed World Transmission
- Pushbutton Shift Pad
- Torque: 660 lbs./ft. Max. Net at 1,600 RPM
- 75-Gallon Fuel Tank
- 156 Amp Alternator
- Stainless Steel Wheel Simulators
- Leaf Spring Suspension
- Four Gas Shock Absorbers
- Performance Suspension Package
- Hydraulic Anti-Lock Braking System
- Exhaust Brake VG Turbo with Engine
- Prewire for Supplemental Braking System
- Air Cleaner Restriction Indicator
- Fully Automatic Hydraulic Leveling System
- 5,000 Lb. Hitch Receiver with Dual Connector 4-Pin or 7-Pin

COCKPIT

- Fiberglass Automotive Dash with Silver Graphite Instrumentation Panel
- In-Dash AM/FM/CD Stereo Radio with Sirius-Ready Compatibility, iPod Control, Aux-in-Conn, SD Card Slot and Weather Band
- Power Sunvisors
- Rear Vision System with Audio and Adjustable Camera
- Molded Pilot Side Console with Two-Tier Cup Holder and Control Pad for Transmission Shifter
- Molded Co-Pilot Side Console with Two-Tier Cup Holder
- Leatherette Pilot and Co-Pilot Cockpit Recliner Seats
- Six-Way Power Pilot Seat
- Carpeted Driver and Passenger Floor Mats

OPTIONS

- Six-Way Power Co-Pilot Seat
- Sirius Radio Tuner with Satellite System
- 3-Camera Rear Vision System with Audio and Adjustable Center Camera (Requires Selection of Chrome Mirrors)
- Interior Solar Privacy Sunscreens
- GPS Navigation System

APPLIANCES AND ACCESSORIES

- Large Double-Door Refrigerator with Ice Maker 8 Cu. Ft.
- High-Output 3-Burner Cooktop
- Removable Solid Surface Range Covers
- Spacesaver Convection Microwave
- Washer/Dryer Prep (34SBD, 36SFD)
- 26" LCD Stereo Color TV with Remote Control in Cockpit Overhead (N/A: 34SBD, 34SDD)
- 32" LCD TV with Remote Control Facing Living Room Area (34SBD, 34SDD)
- 19" Bedroom Widescreen LCD TV
- Curbside: Exterior Hook-Ups for DSS Dish, Cable, 110V Outlet with Hatch Door to Exterior
- Digital Satellite System Prep
- Curbside: Exterior Gas Line Hook-Up Prep for LP Accessories

OPTIONS

- Large Double-Door Refrigerator with Ice Maker 10 Cu. Ft.
- Large Four-Door Refrigerator with Ice Maker (N/A with Pantry)
- High-Output Three-Burner Range with Oven
- Combination Washer/Dryer (34SBD, 36SFD)
- Central Vacuum System
- Home Theater Surround Sound System with Sub-Woofer
- Bedroom DVD Player

CHASSIS/ENGINE/SUSPENSION

- › Roadmaster RSR Rail Chassis
- › Cummins[®] ISB-AD 340 HP Low-Torque Engine with Allison[®] 2100 MH 6-Speed World Transmission
- › Pushbutton Shift Pad
- › Torque: 660 lbs./ft. Max. Net at 1,600 RPM
- › 75-Gallon Fuel Tank
- › 156 Amp Alternator
- › Stainless Steel Wheel Simulators
- › Leaf Spring Suspension
- › Four Gas Shock Absorbers
- › Performance Suspension Package
- › Hydraulic Anti-Lock Braking System
- › Exhaust Brake VG Turbo with Engine
- › Prewire for Supplemental Braking System
- › Air Cleaner Restriction Indicator
- › Fully Automatic Hydraulic Leveling System
- › 5,000 Lb. Hitch Receiver with Dual Connector 4-Pin or 7-Pin

COCKPIT

- › Fiberglass Automotive Dash with Silver Graphite Instrumentation Panel
- › In-Dash AM/FM/CD Stereo Radio with Sirius-Ready Compatibility, iPod Control, Aux-in-Conn, SD Card Slot and Weather Band
- › Power Sunvisors
- › Rear Vision System with Audio and Adjustable Camera
- › Molded Pilot Side Console with Two-Tier Cup Holder and Control Pad for Transmission Shifter
- › Molded Co-Pilot Side Console with Two-Tier Cup Holder
- › Leatherette Pilot and Co-Pilot Cockpit Recliner Seats
- › Six-Way Power Pilot Seat
- › Carpeted Driver and Passenger Floor Mats

OPTIONS

- › Six-Way Power Co-Pilot Seat
- › Sirius Radio Tuner with Satellite System
- › 3-Camera Rear Vision System with Audio and Adjustable Center Camera (Requires Selection of Chrome Mirrors)
- › Interior Solar Privacy Sunscreens
- › GPS Navigation System

APPLIANCES AND ACCESSORIES

- › Large Double-Door Refrigerator with Ice Maker 8 Cu. Ft.
- › High-Output 3-Burner Cooktop
- › Removable Solid Surface Range Covers
- › Spacesaver Convection Microwave
- › Washer/Dryer Prep (34SBD, 36SFD)
- › 26" LCD Stereo Color TV with Remote Control in Cockpit Overhead (N/A: 34SBD, 34SDD)
- › 32" LCD TV with Remote Control Facing Living Room Area (34SBD, 34SDD)
- › 19" Bedroom Widescreen LCD TV
- › Curbside: Exterior Hook-Ups for DSS Dish, Cable, 110V Outlet with Hatch Door to Exterior
- › Digital Satellite System Prep
- › Curbside: Exterior Gas Line Hook-Up Prep for LP Accessories

OPTIONS

- › Large Double-Door Refrigerator with Ice Maker 10 Cu. Ft.
- › Large Four-Door Refrigerator with Ice Maker (N/A with Pantry)
- › High-Output Three-Burner Range with Oven
- › Combination Washer/Dryer (34SBD, 36SFD)
- › Central Vacuum System
- › Home Theater Surround Sound System with Sub-Woofer
- › Bedroom DVD Player

INTERIOR

- Raised Panel Cabinet Doors
- Black ABS Refrigerator Insert
- Heavy-Duty Ball Bearing Drawer Guides
- Wood Cabinet Drawer Boxes
- Solid Surface Kitchen Countertop, Edge Treatment and Backsplash
- Kitchen Countertop Extension with Two Drawers Below, 110V Outlet and Two Deep Drawers (N/A: 36SFD)
- Kitchen Countertop End Splash near Sink (N/A: 36SFD)
- Kitchen Countertop End Splash near Cooktop (36SFD)
- Laminated Bath Lavatory Countertop, Solid Surface Edge Treatment, Stainless Steel Lavatory Bowl with Solid Surface Backsplash
- Laminated Countertops with Solid Surface Edge Treatment

- Kitchen Pantry next to Refrigerator with Full-Height Hardwood Roll-Out Storage (N/A with Four-Door Refrigerator Option) (N/A: 36SBD)
- Kitchen Pantry next to Refrigerator with Full-Height Wire Roll-Out Storage (N/A with Four-Door Refrigerator Option) (36SBD)
- Linoleum Flooring: Kitchen, Bath, Entry
- Soft Touch Padded Vinyl Ceiling
- Wood Grain Crown Molding in Bedroom and Living Area
- New Wood Slide-Out Fascia with Wood Inserts
- New Satin Nickel Cabinetry Hardware and Bath Accessories

- Hardwood Framed Pocket Doors with Flat Panel Insert, Slide-Bolt Door Latch (N/A: 34SDD, 36SFD)
- Blackout Day/Night Pleated Shades in Living Area and Bedroom

OPTIONS

- New Decors: Urban Loft II, New Autumn Trail III and Vintage Gold
- Wood Choice: Newport Cherry II, Champagne Select

FURNITURE

- Queen Bed with Nightstands
- Party Table behind Co-Pilot Seat (34PDD)
- Arched Back Wood Booth Dinette with Side-Sliding Dinette Tabletop (N/A: 36SFD)
- Freestanding Dinette with Two Freestanding Chairs and Two Folding Chairs (36SFD)
- Roadside: Fabric Easy Bed Sofa
- Curbside: Fabric Easy Bed Sofa (34SBD, 36SBD)
- Curbside: Fabric Love Seat Sofa (36 SFD)
- Curbside: Leatherette Swivel-Rocker Barrel Chair (34PDD)

OPTIONS

- Roadside: New Style Fabric Hide-A-Bed Sofa with Air Mattress
- Roadside: New Style Leatherette Hide-A-Bed Sofa with Air Mattress
- Leatherette Euro-Recliner with Ottoman (34PDD)
- Roadside: Leatherette Ensemble Booth Dinette Includes Leatherette Hide-A-Bed Sofa with Air Mattress (N/A: 36SFD)

- Curbside: Leatherette Easy Bed Sofa (34SBD, 36SBD)
- Curbside: Leatherette Love Seat Sofa (36SFD)
- Curbside: One Leatherette Euro-Recliner with Ottoman, Wall-Mounted Table (N/A: 34PDD, 34SDD)
- Freestanding Dinette with Two Freestanding Chairs and Two Folding Chairs (N/A: 36SFD)

ELECTRICAL SYSTEMS AND LIGHTS

- 50 Amp 120V Distribution Panel and Cord
- 55 Amp Electronic 12V Power Converter
- Onan® 6.0 kW Diesel Generator
- Two 6V House Batteries
- Two 12V Heavy-Duty Chassis Batteries
- Battery Disconnect Switch at Front Door
- Exterior Power Entry Step with Light
- Interior Stepwell Entry Step Lights
- Water Pump Switch in Service Bay Area and Convenience Center

- Lights in Outside Storage Compartments
- Underhood Utility Light
- Two Recessed Ceiling Map Lights above Cockpit Seats
- Hallway/Kitchen Convenience Center
- New Decorative Lighting Fixtures

OPTIONS

- 600 Watt Inverter
- 50 Amp Energy Management System

INTERIOR

- › Raised Panel Cabinet Doors
- › Black ABS Refrigerator Insert
- › Heavy-Duty Ball Bearing Drawer Guides
- › Wood Cabinet Drawer Boxes
- › Solid Surface Kitchen Countertop, Edge Treatment and Backsplash
- › Kitchen Countertop Extension with Two Drawers Below, 110V Outlet and Two Deep Drawers (N/A: 36SFD)
- › Kitchen Countertop End Splash near Sink (N/A: 36SFD)
- › Kitchen Countertop End Splash near Cooktop (36SFD)
- › Laminated Bath Lavatory Countertop, Solid Surface Edge Treatment, Stainless Steel Lavatory Bowl with Solid Surface Backsplash
- › Laminated Countertops with Solid Surface Edge Treatment
- › Kitchen Pantry next to Refrigerator with Full-Height Hardwood Roll-Out Storage (N/A with Four-Door Refrigerator Option) (N/A: 36SBD)
- › Kitchen Pantry next to Refrigerator with Full-Height Wire Roll-Out Storage (N/A with Four-Door Refrigerator Option) (36SBD)
- › Linoleum Flooring: Kitchen, Bath, Entry
- › Soft Touch Padded Vinyl Ceiling
- › Wood Grain Crown Molding in Bedroom and Living Area
- › New Wood Slide-Out Fascia with Wood Inserts
- › New Satin Nickel Cabinetry Hardware and Bath Accessories
- › Hardwood Framed Pocket Doors with Flat Panel Insert, Slide-Bolt Door Latch (N/A: 34SDD, 36SFD)
- › Blackout Day/Night Pleated Shades in Living Area and Bedroom

OPTIONS

- › New Decors: Urban Loft II, New Autumn Trail III and Vintage Gold
- › Wood Choice: Newport Cherry II, Champagne Select

FURNITURE

- › Queen Bed with Nightstands
- › Party Table behind Co-Pilot Seat (34PDD)
- › Arched Back Wood Booth Dinette with Side-Sliding Dinette Tabletop (N/A: 36SFD)
- › Freestanding Dinette with Two Freestanding Chairs and Two Folding Chairs (36SFD)
- › Roadside: Fabric Easy Bed Sofa
- › Curbside: Fabric Easy Bed Sofa (34SBD, 36SBD)
- › Curbside: Fabric Love Seat Sofa (36 SFD)
- › Curbside: Leatherette Swivel-Rocker Barrel Chair (34PDD)

OPTIONS

- › Roadside: New Style Fabric Hide-A-Bed Sofa with Air Mattress
- › Roadside: New Style Leatherette Hide-A-Bed Sofa with Air Mattress
- › Leatherette Euro-Recliner with Ottoman (34PDD)
- › Roadside: Leatherette Ensemble Booth Dinette Includes Leatherette Hide-A-Bed Sofa with Air Mattress (N/A: 36SFD)
- › Curbside: Leatherette Easy Bed Sofa (34SBD, 36SBD)
- › Curbside: Leatherette Love Seat Sofa (36SFD)
- › Curbside: One Leatherette Euro-Recliner with Ottoman, Wall-Mounted Table (N/A: 34PDD, 34SDD)
- › Freestanding Dinette with Two Freestanding Chairs and Two Folding Chairs (N/A: 36SFD)

ELECTRICAL SYSTEMS AND LIGHTS

- › 50 Amp 120V Distribution Panel and Cord
- › 55 Amp Electronic 12V Power Converter
- › Onan® 6.0 kW Diesel Generator
- › Two 6V House Batteries
- › Two 12V Heavy-Duty Chassis Batteries
- › Battery Disconnect Switch at Front Door
- › Exterior Power Entry Step with Light
- › Interior Stepwell Entry Step Lights
- › Water Pump Switch in Service Bay Area and Convenience Center
- › Lights in Outside Storage Compartments
- › Underhood Utility Light
- › Two Recessed Ceiling Map Lights above Cockpit Seats
- › Hallway/Kitchen Convenience Center
- › New Decorative Lighting Fixtures

OPTIONS

- › 600 Watt Inverter
- › 50 Amp Energy Management System

PLUMBING AND LP SYSTEMS

- Kitchen Stainless Steel Under-Mounted Sink with Single Lever Satin Nickel Faucet with Pullout Sprayer
- Central Water Filtration System
- Stainless Steel Bath Lavatory Bowl
- Bath Lavatory Faucet Satin Nickel Finish
- Demand Water System and Water Pump
- 10-Gallon LP Gas/Electric Water Heater with Electronic Ignition, DSI
- Winterization Valving System
- Water Heater Bypass Valve
- China Toilet with Sprayer
- Holding Tank Rinsing System
- Insulated Systems Compartment with Easy Access to Hook-Up
- Shower inside Wet Bay with Hot/Cold Water, Shower Head with Shut-Off
- Pressurized Water Fill
- Contained Storage Area for Sewer Hose
- One-Piece Fiberglass Shower
- Radius Satin Nickel Shower Door Frame with Obscured Glass (N/A: 34SBD)
- Tri-Slide Shower Door with Rectangular Shower (34SBD)

OPTIONS

- RV Sani-Con 2 System — Holding Tank Flush System with Hanging Bracket for Hose

HEATING, VENTS AND AIR CONDITIONING

- Dual 13.5M BTU Air Conditioners
- Electronic Ignition Furnace 35M BTU
- New Electronic Dash AC/Heat Climate Control System
- Kitchen Powered Attic Fan with Wall Control of Automatic Dome and Fan Power
- Bath Powered Attic Fan with Wall Control of Automatic Dome and Fan Power

OPTIONS

- Dual 15M BTU Air Conditioner with Heat Pumps
- 12V Heater in Wet Bay

WINDOWS, DOORS AND AWNINGS

- Radius Flush-Mounted Dual Pane Safety Glass Dark Tinted Slider Windows
- Front Entry Door with Clear Glass, Removable Screen and Anti-Skid Steps
- Patio Awning with Metal Cover
- Topper Slide-Out Awnings Living Area and Bedroom
- Tinted Skylight in Bathroom with Protecta Glaze

OPTIONS

- Eclipse Automatic Patio Awning with Metal Covers
- Front Door Awning with Metal Cover
- Window Awnings Living Area Slide-Out House Windows (N/A with Kitchen Windows)

SAFETY

- Fire Extinguisher
- Deadbolt Lock on Entrance Door
- 120V GFI Protected Circuit, Kitchen, Bath and Exterior
- LP Gas Detector
- Smoke Detector
- Carbon Monoxide Detector
- Pilot and Co-Pilot Three-Point Seatbelts
- Third Brake Safety Light

PLUMBING AND LP SYSTEMS

- › Kitchen Stainless Steel Under-Mounted Sink with Single Lever Satin Nickel Faucet with Pullout Sprayer
- › Central Water Filtration System
- › Stainless Steel Bath Lavatory Bowl
- › Bath Lavatory Faucet Satin Nickel Finish
- › Demand Water System and Water Pump
- › 10-Gallon LP Gas/Electric Water Heater with Electronic Ignition, DSI
- › Winterization Valving System
- › Water Heater Bypass Valve
- › China Toilet with Sprayer
- › Holding Tank Rinsing System
- › Insulated Systems Compartment with Easy Access to Hook-Up
- › Shower inside Wet Bay with Hot/Cold Water, Shower Head with Shut-Off
- › Pressurized Water Fill
- › Contained Storage Area for Sewer Hose
- › One-Piece Fiberglass Shower
- › Radius Satin Nickel Shower Door Frame with Obscured Glass (N/A: 34SBD)
- › Tri-Slide Shower Door with Rectangular Shower (34SBD)

OPTIONS

- › RV Sani-Con 2 System — Holding Tank Flush System with Hanging Bracket for Hose

HEATING, VENTS AND AIR CONDITIONING

- › Dual 13.5M BTU Air Conditioners
- › Electronic Ignition Furnace 35M BTU
- › New Electronic Dash AC/Heat Climate Control System
- › Kitchen Powered Attic Fan with Wall Control of Automatic Dome and Fan Power
- › Bath Powered Attic Fan with Wall Control of Automatic Dome and Fan Power

OPTIONS

- › Dual 15M BTU Air Conditioner with Heat Pumps
- › 12V Heater in Wet Bay

WINDOWS, DOORS AND AWNINGS

- › Radius Flush-Mounted Dual Pane Safety Glass Dark Tinted Slider Windows
- › Front Entry Door with Clear Glass, Removable Screen and Anti-Skid Steps
- › Patio Awning with Metal Cover
- › Topper Slide-Out Awnings Living Area and Bedroom
- › Tinted Skylight in Bathroom with Protecta Glaze

OPTIONS

- › Eclipse Automatic Patio Awning with Metal Covers
- › Front Door Awning with Metal Cover
- › Window Awnings Living Area Slide-Out House Windows (N/A with Kitchen Windows)

SAFETY

- › Fire Extinguisher
- › Deadbolt Lock on Entrance Door
- › 120V GFI Protected Circuit, Kitchen, Bath and Exterior
- › LP Gas Detector
- › Smoke Detector
- › Carbon Monoxide Detector
- › Pilot and Co-Pilot Three-Point Seatbelts
- › Third Brake Safety Light



MONACO®

DRIVING YOUR DREAM.

Take a closer look, and you'll discover that Monaco Coach Corporation gives you more industry "bests" than any other RV manufacturer. Like the incomparable ride and handling of the Roadmaster Chassis. The convenience of our 350 service centers. The peace of mind of 24/7 roadside assistance. The value of Monaco Financial Services. And the online support of monacocoach.com. At Monaco, we've built our reputation by listening to you – and answering to you. And that's the difference that's made us the best.

SIGNATURE SERIES



THE EXECUTIVE®



DYNASTY®



CAMELOT®



DIPLOMAT®



KNIGHT®



CAYMAN®



LAPALMA®



MONARCH®



 2009 LAPALMA®



MONACO®

DRIVING YOUR DREAM.

Take a closer look, and you'll discover that Monaco Coach Corporation gives you more industry "bests" than any other RV manufacturer. Like the incomparable ride and handling of the Roadmaster Chassis. The convenience of our 350 service centers. The peace of mind of 24/7 roadside assistance. The value of Monaco Financial Services. And the online support of monacocoach.com. At Monaco, we've built our reputation by listening to you — and answering to you. And that's the difference that's made us the best.

SIGNATURE SERIES



THE EXECUTIVE™



DYNASTY™



CAMELOT™



DIPLOMAT™



KNIGHT™



CAYMAN™



LAPALMA™



MONARCH™



91320 Coburg Industrial Way, Coburg, OR 97408

800 634-0855

www.monacocoach.com

Monaco Coach Corporation is traded on the NYSE under the listing MNC. | 0508 NPN: BROMLAP