

TUSCANY BY DAMON

2009

Tuscany
Divino Motorhomes

A Place in the Middle of Luxury and Value.



DAMON
CLASS-A DIESEL

TUSCANY BY DAMON

2009

Tuscany

Divine Motorhomes

A Place in the Middle of Luxury and Value.



DAMON
CLASS-A DIESEL

The fine art of recreation travel



The fine art of recreation travel



was created here



At Damon, you'll be transported to a place that's off the beaten path, a place of tranquility. Tuscany is just the vehicle to get you there in complete comfort and style. Rich in heritage, Tuscany coaches rest between higher-end amenities and everyday value for the money. Compare its long list of top quality components, luxury appointments, rugged construction and you'll understand that Tuscany is on a road by itself. Get there



with ease with its 360 HP 8.3L Cummins diesel pusher with 1,050 ft/lbs of

torque. And once there, bask in luxurious features; like Ultraleather furniture, 42" LCD TV, Pillow top mattress, Corian surfaces and more.

We're Damon.

Our good name and reputation for better "value by design" lives on with Tuscany. At Damon, we're constantly searching for unique floorplan and room layouts, the most modern appliances, top-quality fabrics, and construction techniques that are truly meticulous in thought and craftsmanship. And being part of Thor Industries, the world's largest RV manufacturer, means Damon Motor Coach will be here way down the road.

was created here



At Damon, you'll be transported to a place that's off the beaten path, a place of tranquility. Tuscany is just the vehicle to get you there in complete comfort and style. Rich in heritage, Tuscany coaches rest between higher-end amenities and everyday value for the money. Compare its long list of top quality components, luxury appointments, rugged construction and you'll understand that Tuscany is on a road by itself. Get there



with ease with its 360 HP 8.3L Cummins diesel pusher with 1,050 ft/lbs of torque. And once there, bask in luxurious features; like Ultraleather furniture, 42" LCD TV, Pillow top mattress, Corian surfaces and more.

We're Damon.

Our good name and reputation for better "value by design" lives on with Tuscany. At Damon, we're constantly searching for unique floorplan and room layouts, the most modern appliances, top-quality fabrics, and construction techniques that are truly meticulous in thought and craftsmanship. And being part of Thor Industries, the world's largest RV manufacturer, means Damon Motor Coach will be here way down the road.

Divinity

IS THIS HEAVEN?

Some are inclined to agree: Tuscany represents a "field of dreams." At Damon, we've designed and built-in every conceivable luxury, including 6-way power seating, Home Theatre surround sound system, ceramic tile flooring, electric shades, full basement storage; even a porcelain toilet! They find brand names like Carrier, Corian, Onan, Jensen and more as well. Tuscany owners have come, and they've never been disappointed.



POWER SHADES

A one-piece electric sunshade (along with a one-piece power night shade) is standard on Tuscany models. There are also manual side shades for your convenience. The windshield is one-piece as well for spectacular panoramic views.



POWER SEATING

Premium Ultraleather and oversized seating not only spins around to complete your living area experience, but feature 6-way power adjustability along with a passenger electric footrest. This is maximum luxury for the price!

INTERIOR COLORS

Tuscany provides three distinct interior colors and decor without additional cost.

BLACK PEARL



FRENCH COGNAC



TROPIC BREEZE



BACKUP MONITOR FEATURES A TOUCH SCREEN.



Divinity

IS THIS HEAVEN?

Some are inclined to agree: Tuscany represents a “field of dreams.” At Damon, we’ve designed and built-in every conceivable luxury, including 6-way power seating, Home Theatre surround sound system, ceramic tile flooring, electric shades, full basement storage; even a porcelain toilet! They find brand names like Carrier, Corian, Onan, Jensen and more as well. Tuscany owners have come, and they’ve never been disappointed.



POWER SHADES
A one-piece electric sunshade (along with a one-piece power night shade) is standard on Tuscany models. There are also manual side shades for your convenience. The windshield is one-piece as well for spectacular panoramic views.



POWER SEATING
Premium Ultraleather and oversized seating not only spins around to complete your living area experience, but feature 6-way power adjustability along with a passenger electric footrest. This is maximum luxury for the price!



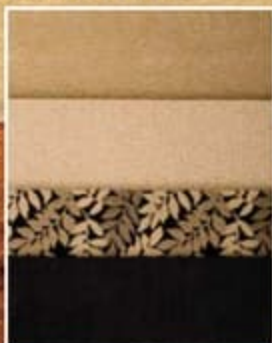
BACKUP MONITOR FEATURES A TOUCH SCREEN.



INTERIOR COLORS

Tuscany provides three distinct interior colors and decor without additional cost.

BLACK PEARL



FRENCH COGNAC



TROPIC BREEZE





MODEL 4072 IN BLACK PEARL DECOR.



CORIAN COUNTERTOPS AND LARGE, 4-DOOR REFER.



KING BED (SOME MODELS) FEATURES PILLOWTOP MATTRESS.



EURO SEATING, WALL-TO-WALL TILE FLOOR AND GREAT VIEWS INSIDE AND OUT!



UNIQUE BEDROOM LCD TV/OVERHEAD CABINET STORAGE.



GLAZED MAPLE
(Optional)

Solid wood raised panel doors and drawer fronts.



CHERRY (Standard)

And hinges are hidden on interior cabinet doors.



MODEL 4072 IN BLACK PEARL DECOR.



CORIAN COUNTERTOPS AND LARGE, 4-DOOR REFER.



KING BED (SOME MODELS) FEATURES PILLOWTOP MATTRESS.



EURO SEATING, WALL-TO-WALL TILE FLOOR AND GREAT VIEWS INSIDE AND OUT!



UNIQUE BEDROOM LCD TV/OVERHEAD CABINET STORAGE.



GLAZED MAPLE
[Optional]
Solid wood raised panel doors and drawer fronts.



CHERRY (Standard)
And hinges are hidden on interior cabinet doors.



POWER AWNING

A convenient switch panel is located just inside the entry door. It controls the awning, which also features a remote control and wind sensor!



GREYHOUND BUS-TYPE STORAGE

Like no other, Tuscany's full basement pass-through storage with gas piston baggage doors and high quality latches gives you maximum storage. Notice optional, convenient sliding compartment as well. This massive area is achieved through Damon's unique 13" raised rail steel floor truss design. "Brilliant," you'll say!



FIRST CLASS ACCOMMODATIONS

Bathrooms feature full height, one-piece radius fiberglass shower; skylight; power vent; solid surface countertop and ceramic tile flooring.



ELECTRIC ENTRY STEP COVER

Another smart Damon design, Tuscany features a standard power step cover, making travel more comfortable and value more appreciated.



OUTSIDE ENTERTAINMENT

This all-new outside LCD TV and remote is built into a compartment in the slide wall. It features a 32" LCD screen.



STANDARD CENTRAL VACUUM

Optional on others, a convenient central vacuum system (along with toe kicks you'll appreciate on most Tuscany models) adds to Damon's value.

4051 Tuscany

CHASSIS	FREIGHTLINER
WHEELBASE	266
OVERALL LENGTH	40'6"
OVERALL WIDTH	101"
OVERALL HEIGHT WITH AC	12'7"
GVWR	32K
GCWR	42K
FRESH WATER	95.5 (GAL.)
WATER HEATER	10 (GAL.)
GREY/BLACK WATER	51 (GAL.)
LP (LBS.)	126
SLEEPING CAPACITY	5
EXTERIOR STORAGE	215 (CU. FT.)
INTERIOR DRAWERS	12
INTERIOR DRAWER CAPACITY	13.1 (CU. FT.)
FUEL CAPACITY	100 (APPROX. GAL.)



Exterior Entertainment Center with 32" LCD/HD TV

BUILT RIGHT, THE WAY YOU'D DO IT!

You get more with Damon. Neoprene vibration dampening, all openings framed in aluminum, galvanized steel underbelly, heated holding tanks from furnace, and more. All built to higher specifications!

ROOF:

- 1] Padded ceiling
- 2] Luan (wood)
- 3] Air cond. duct
- 4] Luan (wood)
- 5] TPO roofing
- 6] Insulation
- 7] Aluminum frame

SIDEWALLS:

- 1] Interior panel
- 2] 1-1/2" block foam insulation
- 3] Luan backer
- 4] Ext. fiberglass
- 5] Aluminum frame (tubing)

FLOOR:

- 1] Carpet
- 2] Padding
- 3] Structurwood® flooring
- 4] Block foam
- 5] Galvanized metal
- 6] Steel frame



FREIGHTLINER Custom Chassis

THE LEADER IN EVERY TOUR

RAISED RAIL CHASSIS

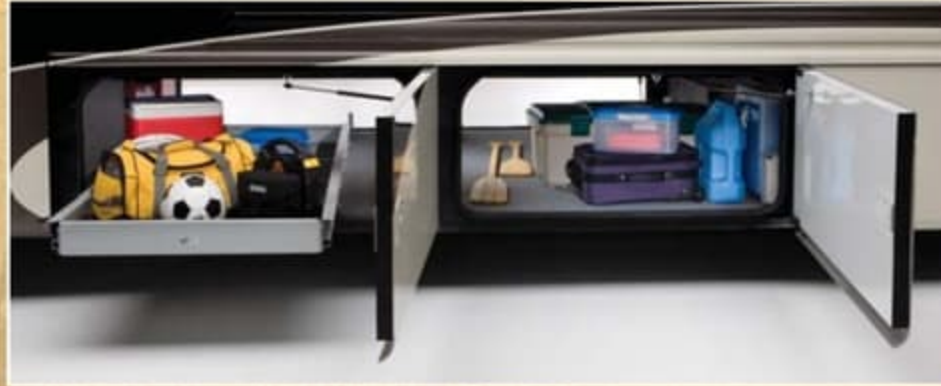
This Freightliner XC raised-rail chassis and 360 HP Cummins diesel is top-of-the-line. It provides 1050 ft-lb of torque, has an in-block 1000 W engine heater, and 6-speed Allison transmission.





POWER AWNING

A convenient switch panel is located just inside the entry door. It controls the awning, which also features a remote control and wind sensor!



GREYHOUND BUS-TYPE STORAGE

Like no other, Tuscany's full basement pass-through storage with gas piston baggage doors and high quality latches gives you maximum storage. Notice optional, convenient sliding compartment as well. This massive area is achieved through Damon's unique 13" raised rail steel floor truss design. "Brilliant," you'll say!



FIRST CLASS ACCOMMODATIONS

Bathrooms feature full height, one-piece radius fiberglass shower; skylight; power vent; solid surface countertop and ceramic tile flooring.



ELECTRIC ENTRY STEP COVER

Another smart Damon design, Tuscany features a standard power step cover, making travel more comfortable and value more appreciated.



OUTSIDE ENTERTAINMENT

This all-new outside LCD TV and remote is built into a compartment in the slide wall. It features a 32" LCD screen.



STANDARD CENTRAL VACUUM

Optional on others, a convenient central vacuum system (along with toe kicks you'll appreciate on most Tuscany models) adds to Damon's value.

4051 Tuscany

CHASSIS	FREIGHTLINER
WHEELBASE	266
OVERALL LENGTH	40'6"
OVERALL WIDTH	101"
OVERALL HEIGHT WITH AC	12'7"
GVWR	32K
GCWR	42K
FRESH WATER	95.5 (GAL.)
WATER HEATER	10 (GAL.)
GREY/BLACK WATER	51 (GAL.)
LP (LBS.)	126
SLEEPING CAPACITY	5
EXTERIOR STORAGE	215 (CU. FT.)
INTERIOR DRAWERS	12
INTERIOR DRAWER CAPACITY	13.1 (CU. FT.)
FUEL CAPACITY	100 (APPROX. GAL.)



Exterior Entertainment Center with 32" LCD/HD TV

BUILT RIGHT, THE WAY YOU'D DO IT!

You get more with Damon. Neoprene vibration dampening, all openings framed in aluminum, galvanized steel underbelly, heated holding tanks from furnace, and more. All built to higher specifications!

ROOF:

- 1) Padded ceiling
- 2) Luan (wood)
- 3) Air cond. duct
- 4) Luan (wood)
- 5) TPO roofing
- 6) Insulation
- 7) Aluminum frame

SIDEWALLS:

- 1) Interior panel
- 2) 1-1/2" block foam insulation
- 3) Luan backer
- 4) Ext. fiberglass
- 5) Aluminum frame (tubing)

FLOOR:

- 1) Carpet
- 2) Padding
- 3) Structurwood® flooring
- 4) Block foam
- 5) Galvanized metal
- 6) Steel frame



FREIGHTLINER Custom Chassis

THE LEADER AT EVERY TURN

RAISED RAIL CHASSIS

This Freightliner XC raised-rail chassis and 360 HP Cummins diesel is top-of-the-line. It provides 1050 ft/lb of torque, has an in-block 1000 W engine heater, and 6-speed Allison transmission.



Designed and Built to Higher Standards.



Exterior Entertainment Center
with 32" LCD/HD TV

4056 Tuscany

CHASSIS	FREIGHTLINER
WHEELBASE	266
OVERALL LENGTH	40'6"
OVERALL WIDTH	101"
OVERALL HEIGHT WITH AC	12'7"
GVWR	32K
GCWR	42K
FRESH WATER	95.5 (GAL.)
WATER HEATER	10 (GAL.)
GREY/BLACK WATER	51 (GAL.)
LP (LBS.)	126
SLEEPING CAPACITY	4
EXTERIOR STORAGE	215 (CU. FT.)
INTERIOR DRAWERS	19
INTERIOR DRAWER CAPACITY	17.8 (CU. FT.)
FUEL CAPACITY	100 (APPROX. GAL.)



Exterior Entertainment Center
with 32" LCD/HD TV

Optional Buffet
Replaces Booth Dinette

4072 Tuscany

CHASSIS	FREIGHTLINER
WHEELBASE	266
OVERALL LENGTH	40'6"
OVERALL WIDTH	101"
OVERALL HEIGHT WITH AC	12'7"
GVWR	32K
GCWR	42K
FRESH WATER	95.5 (GAL.)
WATER HEATER	10 (GAL.)
GREY/BLACK WATER	51 (GAL.)
LP (LBS.)	126
SLEEPING CAPACITY	5
EXTERIOR STORAGE	215 (CU. FT.)
INTERIOR DRAWERS	12
INTERIOR DRAWER CAPACITY	13.2 (CU. FT.)
FUEL CAPACITY	100 (APPROX. GAL.)



Exterior Entertainment Center
with 32" LCD/HD TV

Optional Buffet
Replaces Booth Dinette

4076 Tuscany

CHASSIS	FREIGHTLINER
WHEELBASE	266
OVERALL LENGTH	40'6"
OVERALL WIDTH	101"
OVERALL HEIGHT WITH AC	12'7"
GVWR	32K
GCWR	42K
FRESH WATER	95.5 (GAL.)
WATER HEATER	10 (GAL.)
GREY/BLACK WATER	51 (GAL.)
LP (LBS.)	126
SLEEPING CAPACITY	5
EXTERIOR STORAGE	215 (CU. FT.)
INTERIOR DRAWERS	18
INTERIOR DRAWER CAPACITY	12.7 (CU. FT.)
FUEL CAPACITY	100 (APPROX. GAL.)



ENCHANTING BEIGE

Full-body paint, including color-coordinated slideroom awnings, is standard on all Tuscany models. These contemporary designs enhance the aerodynamic appeal of your coach.



VENICE BEACH

Here's another color scheme option sure to please. Tuscany models also feature Gel-coat sidewalls for an even smoother, almost glass-like surface.

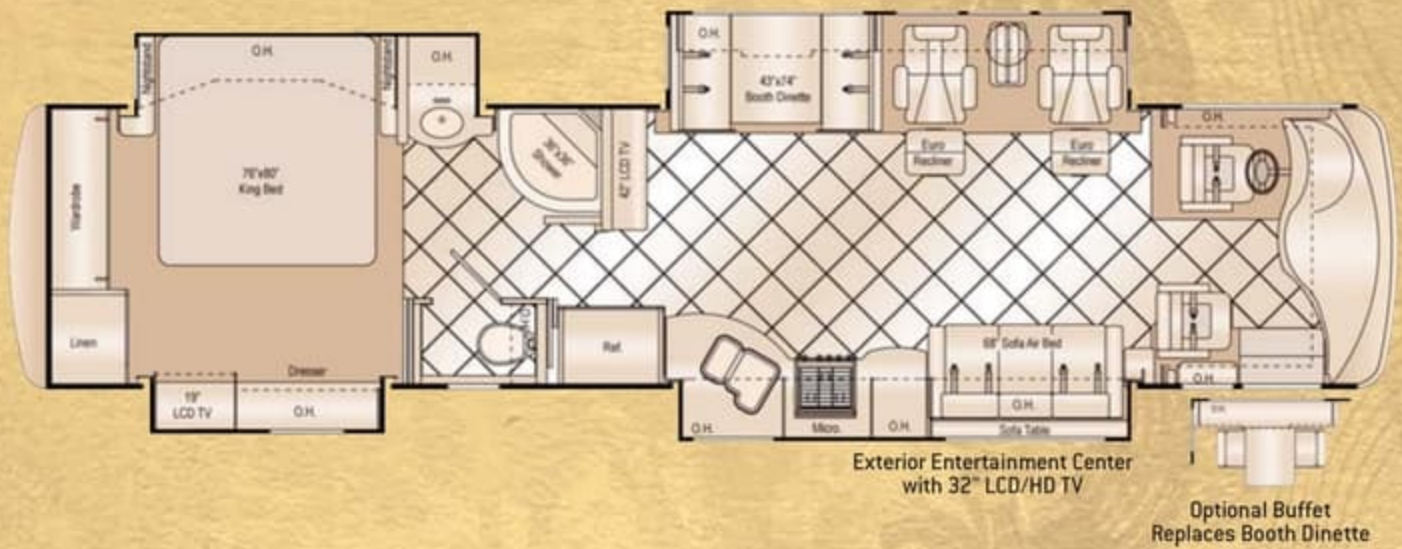
TIMELESS BORDEAUX
(NOT PICTURED, SEE WEB-SITE) Choose from any one of Tuscany's three distinct paint packages. Quality paint, process and designs add value to a Tuscany motorhome.

Designed and Built to Higher Standards.



4056 Tuscany

CHASSIS	FREIGHTLINER
WHEELBASE	266
OVERALL LENGTH	40'6"
OVERALL WIDTH	101"
OVERALL HEIGHT WITH AC	12'7"
GVWR	32K
GCWR	42K
FRESH WATER	95.5 (GAL.)
WATER HEATER	10 (GAL.)
GREY/BLACK WATER	51 (GAL.)
LP (LBS.)	126
SLEEPING CAPACITY	4
EXTERIOR STORAGE	215 (CU. FT.)
INTERIOR DRAWERS	19
INTERIOR DRAWER CAPACITY	17.8 (CU. FT.)
FUEL CAPACITY	100 (APPROX. GAL.)



4072 Tuscany

CHASSIS	FREIGHTLINER
WHEELBASE	266
OVERALL LENGTH	40'6"
OVERALL WIDTH	101"
OVERALL HEIGHT WITH AC	12'7"
GVWR	32K
GCWR	42K
FRESH WATER	95.5 (GAL.)
WATER HEATER	10 (GAL.)
GREY/BLACK WATER	51 (GAL.)
LP (LBS.)	126
SLEEPING CAPACITY	5
EXTERIOR STORAGE	215 (CU. FT.)
INTERIOR DRAWERS	12
INTERIOR DRAWER CAPACITY	13.2 (CU. FT.)
FUEL CAPACITY	100 (APPROX. GAL.)



4076 Tuscany

CHASSIS	FREIGHTLINER
WHEELBASE	266
OVERALL LENGTH	40'6"
OVERALL WIDTH	101"
OVERALL HEIGHT WITH AC	12'7"
GVWR	32K
GCWR	42K
FRESH WATER	95.5 (GAL.)
WATER HEATER	10 (GAL.)
GREY/BLACK WATER	51 (GAL.)
LP (LBS.)	126
SLEEPING CAPACITY	5
EXTERIOR STORAGE	215 (CU. FT.)
INTERIOR DRAWERS	18
INTERIOR DRAWER CAPACITY	12.7 (CU. FT.)
FUEL CAPACITY	100 (APPROX. GAL.)



ENCHANTING BEIGE

Full-body paint, including color-coordinated slideroom awnings, is standard on all Tuscany models. These contemporary designs enhance the aerodynamic appeal of your coach.



VENICE BEACH

Here's another color scheme option sure to please. Tuscany models also feature Gel-coat sidewalls for an even smoother, almost glass-like surface.

TIMELESS BORDEAUX (NOT PICTURED, SEE WEBSITE) Choose from any one of Tuscany's three distinct paint packages. Quality paint, process and designs add value to a Tuscany motorhome.



More Details Online Visit us online for more information about Damon products. Learn about each of Damon's Gas and Diesel Class-A models as well as the exciting new Avanti fuel-efficient clean diesel. Once online, you can take virtual tours, explore 360° viewable interiors, see additional features and find more for less: tuscanyrv.com

EXTERIOR

- Full body paint package including color coordinated slideroom awning(s)
- Color coordinated awning package including electric patio awning with remote control and manual entry door awning
- Fog lights
- Rear ladder
- Front and rear fiberglass caps
- Upgraded gel coat wall
- Locking aluminum exterior storage doors
- Side-hinged compartment doors (passenger side)
- Black framed dual pane radius corner windows
- Lighted storage compartments
- Full basement, pass-through storage
- Exterior entertainment center with 32" LCD TV
- Invisible bra

CHASSIS

- Freightliner XC raised rail chassis with 360-hp 8.3L Cummins engine with 1050 ft/lbs of torque
- In-block, 1000 watt engine heater
- Allison MH-3000 automatic transmission (6 speed)
- Exhaust brake
- Full air brakes with auto slack adjusters front and rear
- Air-ride suspension
- 22.5" radial tires
- Leveling jacks
- Full width stainless steel guard with Damon letters stencil
- Trailer hitch (10,000 lbs.)
- Dual fuel fills
- Aluminum Wheels (Set of 4)

COCKPIT

- Molded ABS dash
- Electronically controlled dash air conditioning

Standards & Available Features

- Digital touch-screen multi-media system w/DVD 5.1 Home Theater, 3-camera back-up color monitor, AM/FM/CD, MP3, SD card reader, USB, Bluetooth, GPS navigation ready & satellite radio ready
- Map lights
- Dash fans
- Air horns
- Tinted one-piece windshield
- Electric windshield day/night privacy shade w/manual side shades - full width
- Front mount chrome power mirrors with heat
- Ceramic tile flooring throughout
- UltraLeather reclining driver's seat with 6-way power
- UltraLeather oversized passenger seat with 6-way power and electric footrest
- Electric step cover

LIVING AREA

- UltraLeather sofa bed (passenger side) (4051)
- (2) Euro recliners with coffee table and lamp (driver side slideout) (4072, 4076)
- Décor fabric sofa/air bed
- Day/night shades
- 42" LCD TV with full function remote and antenna, booster, and jack
- Soft touch padded vinyl ceiling
- Halogen lighting in living area only
- Ceramic tile flooring throughout

KITCHEN

- Refrigerator: four door with icemaker
- Refrigerator: raised panel hardwood front (Glazed Maple or Cherry)
- Cooktop
- Solid surface range cover
- 1.1 cu ft space saver microwave/convection oven
- Two solid surface sink covers
- Solid surface countertops
- Solid wood cabinet doors throughout (glazed maple or cherry)
- Ceramic tile flooring throughout
- 9" LCD TV with integrated AM/FM/CD/DVD Player (4056)
- Dream Dinette with wood edge table
- Freestanding dinette with 4 chairs (2 standard and 2 folding) (4056)
- U-Dinette (4051)
- Mini blind
- Fantastic power vent with rain sensor and remote

BEDROOM

- Pillow top mattress
- Bedspread with throw pillows
- LCD color TV
- Day/night shades
- AM/FM stereo / CD player / DVD Player

BATHROOM

- Full height fiberglass shower with door
- Skylight in shower

- Obscure glass window in private stool area
- Foot flush porcelain toilet with sprayer
- Ceramic tile flooring throughout

UTILITIES

- Air conditioners: 13,500 BTU ducted central air (front and rear)
- Furnace: 34,000 BTU electronic ignition
- Furnace: (2) 20,000 BTU (4051)
- Water heater: 10-gallon gas/electric with electric ignition with blending valve (equals 16 gal.)
- Water heater by-pass kit
- Generator: Onan 8.0 kW Quiet Diesel
- 2000-watt inverter / 100-amp converter
- Battery disconnect
- 50-AMP, 120-volt service
- Enclosed heated potable & holding tanks
- Black tank flush
- 3-Way valve for tank/city water fill
- Washer/dryer prep
- Cable TV/satellite hookup
- Exterior shower
- Carbon monoxide, LP gas, and smoke detectors
- Monitor panel with LPG readout
- Central vacuum system w/toekick dustpan (N/A 4076)

OPTIONS

- Color coordinated window awnings
- Easy slide storage tray
- GPS navigation system
- UltraLeather sofa/air bed (driver side slideout) (4051)
- UltraLeather sofa/air bed (passenger side) (N/A 4051)
- 3-burner range and oven IPO cooktop
- Buffet with additional storage and four chairs (two fixed and two folding)
- Heat pumps (2) with Low Profile A/C
- Energy management system
- Kingdome automatic satellite dish

YOUR LOCAL TUSCANY DEALER:



P.O. BOX 2888 • ELKHART, IN 46515 • CUSTOMER SERVICE: 800-860-3812 • SALES DEPARTMENT: 800-860-5658 • DAMONRV.COM



Due to constant product improvements, the specifications, component parts and standard/optional equipment are subject to change without notice or obligation. Product photography or diagrams may show equipment that is optional. Damon Motor Coach reserves the right to make changes in prices and models and to discontinue models without notice or obligation. Components, parts or chassis may have been manufactured at times other than the model year indicated. All capacities are approximate and dimensions are nominal. All dry weights are based on standard model features and do not include optional features or equipment. Various RV components and features may differ to conform to local codes. Due to EPA environmental restrictions, engine power and torque ratings may change mid-year.



More Details Online Visit us online for more information about Damon products. Learn about each of Damon's Gas and Diesel Class-A models as well as the exciting new Avanti fuel-efficient clean diesel. Once online, you can take virtual tours, explore 360° viewable interiors, see additional features and find more for less: tuscanyrv.com

Standards & Available Features

EXTERIOR

- Full body paint package including color coordinated slideroom awning(s)
- Color coordinated awning package including electric patio awning with remote control and manual entry door awning
- Fog lights
- Rear ladder
- Front and rear fiberglass caps
- Upgraded gel coat wall
- Locking aluminum exterior storage doors
- Side-hinged compartment doors (passenger side)
- Black framed dual pane radius corner windows
- Lighted storage compartments
- Full basement, pass-through storage
- Exterior entertainment center with 32" LCD TV
- Invisible bra

CHASSIS

- Freightliner XC raised rail chassis with 360-hp 8.3L Cummins engine with 1050 ft/lbs of torque
- In-block, 1000 watt engine heater
- Allison MH-3000 automatic transmission (6 speed)
- Exhaust brake
- Full air brakes with auto slack adjusters front and rear
- Air-ride suspension
- 22.5" radial tires
- Leveling jacks
- Full width stainless stone guard with Damon letters stencil
- Trailer hitch (10,000 lbs.)
- Dual fuel fills
- Aluminum Wheels (Set of 4)

COCKPIT

- Molded ABS dash
- Electronically controlled dash air conditioning

- Digital touch-screen multi-media system w/DVD 5.1 Home Theater, 3-camera back-up color monitor, AM/FM/CD, MP3, SD card reader, USB, Bluetooth, GPS navigation ready & satellite radio ready
- Map lights
- Dash fans
- Air horns
- Tinted one-piece windshield
- Electric windshield day/night privacy shade w/manual side shades - full width
- Front mount chrome power mirrors with heat
- Ceramic tile flooring throughout
- UltraLeather reclining driver's seat with 6-way power
- UltraLeather oversized passenger seat with 6-way power and electric footrest
- Electric step cover

LIVING AREA

- UltraLeather sofa bed (passenger side) (4051)
- (2) Euro recliners with coffee table and lamp (driver side slideout) (4072, 4076)
- Décor fabric sofa/air bed
- Day/night shades
- 42" LCD TV with full function remote and antenna, booster, and jack
- Soft touch padded vinyl ceiling
- Halogen lighting in living area only
- Ceramic tile flooring throughout

KITCHEN

- Refrigerator: four door with icemaker
- Refrigerator: raised panel hardwood front (Glazed Maple or Cherry)
- Cooktop
- Solid surface range cover
- 1.1 cu ft space saver microwave/convection oven
- Two solid surface sink covers
- Solid surface countertops
- Solid wood cabinet doors throughout (glazed maple or cherry)
- Ceramic tile flooring throughout
- 9" LCD TV with integrated AM/FM/CD/DVD Player (4056)
- Dream Dinette with wood edge table
- Freestanding dinette with 4 chairs (2 standard and 2 folding) (4056)
- U-Dinette (4051)
- Mini blind
- Fantastic power vent with rain sensor and remote

BEDROOM

- Pillow top mattress
- Bedspread with throw pillows
- LCD color TV
- Day/night shades
- AM/FM stereo / CD player / DVD Player

BATHROOM

- Full height fiberglass shower with door
- Skylight in shower

- Obscure glass window in private stool area
- Foot flush porcelain toilet with sprayer
- Ceramic tile flooring throughout

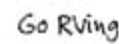
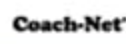
UTILITIES

- Air conditioners: 13,500 BTU ducted central air (front and rear)
- Furnace: 34,000 BTU electronic ignition
- Furnace: (2) 20,000 BTU (4051)
- Water heater: 10-gallon gas/electric with electric ignition with blending valve (equals 16 gal.)
- Water heater by-pass kit
- Generator: Onan 8.0 kW Quiet Diesel
- 2000-watt inverter / 100-amp converter
- Battery disconnect
- 50-AMP, 120-volt service
- Enclosed heated potable & holding tanks
- Black tank flush
- 3-Way valve for tank/city water fill
- Washer/dryer prep
- Cable TV/satellite hookup
- Exterior shower
- Carbon monoxide, LP gas, and smoke detectors
- Monitor panel with LPG readout
- Central vacuum system w/toekick dustpan (N/A 4076)

OPTIONS

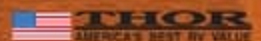
- Color coordinated window awnings
- Easy slide storage tray
- GPS navigation system
- UltraLeather sofa/air bed (driver side slideout) (4051)
- UltraLeather sofa/air bed (passenger side) (N/A 4051)
- 3-burner range and oven IPO cooktop
- Buffet with additional storage and four chairs (two fixed and two folding)
- Heat pumps (2) with Low Profile A/C
- Energy management system
- Kingdome automatic satellite dish

YOUR LOCAL TUSCANY DEALER:



DAMON

P.O. BOX 2888 • ELKHART, IN 46515 • CUSTOMER SERVICE: 800-860-3812 • SALES DEPARTMENT: 800-860-5658 • DAMONRV.COM



Due to constant product improvements, the specifications, component parts and standard/optional equipment are subject to change without notice or obligation. Product photography or diagrams may show equipment that is optional. Damon Motor Coach reserves the right to make changes in prices and models and to discontinue models without notice or obligation. Components, parts or chassis may have been manufactured at times other than the model year indicated. All capacities are approximate and dimensions are nominal. All dry weights are based on standard model features and do not include optional features or equipment. Various RV components and features may differ to conform to local codes. Due to EPA environmental restrictions, engine power and torque ratings may change mid-year.