

Remember that feeling of being free?
Well, it remembers you.



2010 AMERICAN TRADITION



Remember that feeling of being free?
Well, it remembers you.



2010 AMERICAN TRADITION









It's one thing to have goals;
It's another to reach them.

The thrill of achievement has never felt so sweet. Step inside the 2010 Tradition, and feel like you've arrived. Flip the switch on decorator-selected light sconces and feast your eyes on a towering, decorated ceiling. Or, if it's relaxation you crave, sit back on beautiful Villa® sofas, upholstered in supple Ultraleather®. You've earned it. Now all that's left is to enjoy it.



2010 AMERICAN TRADITION



It's one thing to have goals;
It's another to reach them.

The thrill of achievement has never felt so sweet. Step inside the 2010 Tradition, and feel like you've arrived. Flip the switch on decorator-selected light sconces and feast your eyes on a towering, decorated ceiling. Or, if it's relaxation you crave, sit back on beautiful Villa® sofas, upholstered in supple Ultraleather®. You've earned it. Now all that's left is to enjoy it.



2010 AMERICAN TRADITION







Enjoy the Journey. One Step at a Time.

Take things slow. And take it easy in the privacy of the Tradition's incredible master bedroom suite.

Your first step inside is a welcoming one. And because the elegant vanity area is designed with ample drawer and closet storage, everything you need to greet the day stays neatly organized.

It's a sublime retreat that feels like your very own spa. Find your Zen.





Enjoy the Journey. One Step at a Time.

Take things slow. And take it easy in the privacy of the Tradition's incredible master bedroom suite.

Your first step inside is a welcoming one. And because the elegant vanity area is designed with ample drawer and closet storage, everything you need to greet the day stays neatly organized.

It's a sublime retreat that feels like your very own spa. Find your Zen.





BLACK GOLD (Shown in Legion graphics)*



CABERNET GOLD (Shown in Airwave graphics)*



CAFÉ BLANC (Shown in Legion graphics)*



DESERT SUNSET (Shown in Airwave graphics)*



MOCHA FROST (Shown in Legion graphics)*



SILVER MERLOT (Shown in Airwave graphics)*



BLACK GOLD (Shown in Legion graphics)*



CABERNET GOLD (Shown in Airwave graphics)*



CAFÉ BLANC (Shown in Legion graphics)*



DESERT SUNSET (Shown in Airwave graphics)*



MOCHA FROST (Shown in Legion graphics)*



SILVER MERLOT (Shown in Airwave graphics)*

CABINETRY CHOICES[†]



Almond Crème



Cognac Kisses



Mocha Midnight



Silver Charcoal



Dark Mahogany



Hiltonhead Crème
Glaze



Natural Cherry



Regency Cherry



Spicy Maple

CABINET HARDWARE



[†] Interior décors and/or woods may be subject to change. Printed fabric samples above are representations of actual fabrics and may be limited due to standard printing technology. For actual samples, see your American Coach dealer.

CABINETRY CHOICES[†]



Almond Crème



Cognac Kisses



Dark Mahogany



Hiltonhead Crème
Glaze



Mocha Midnight



Silver Charcoal



Natural Cherry



Regency Cherry



Spicy Maple

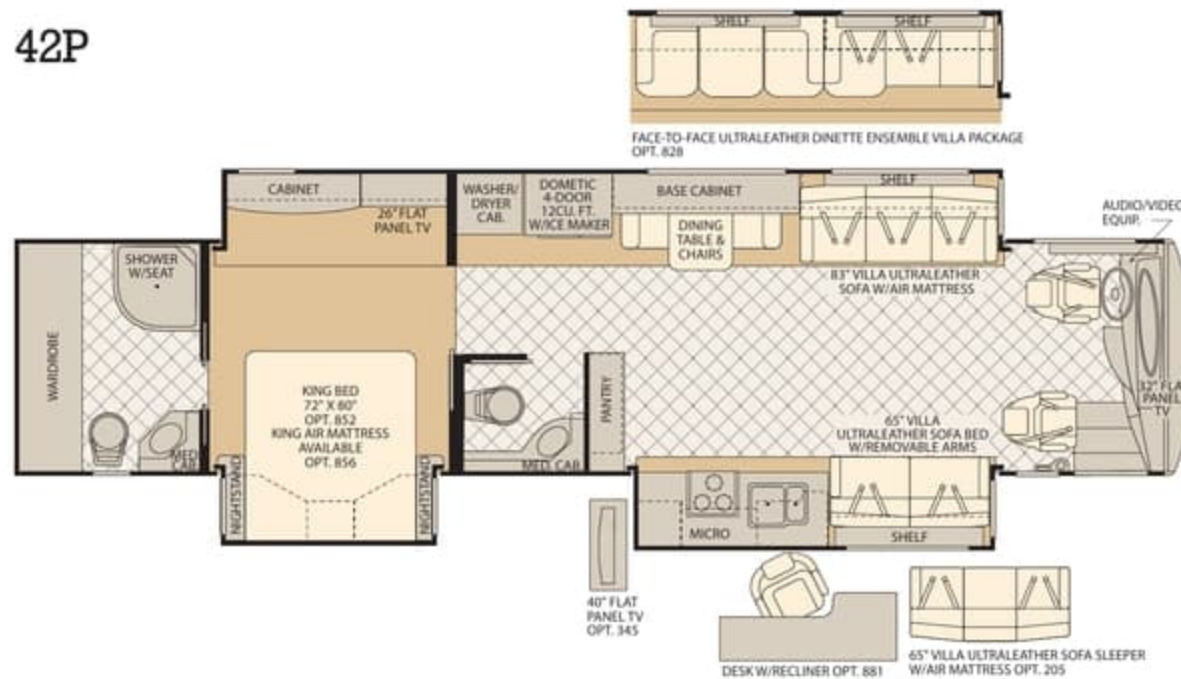
CABINET HARDWARE



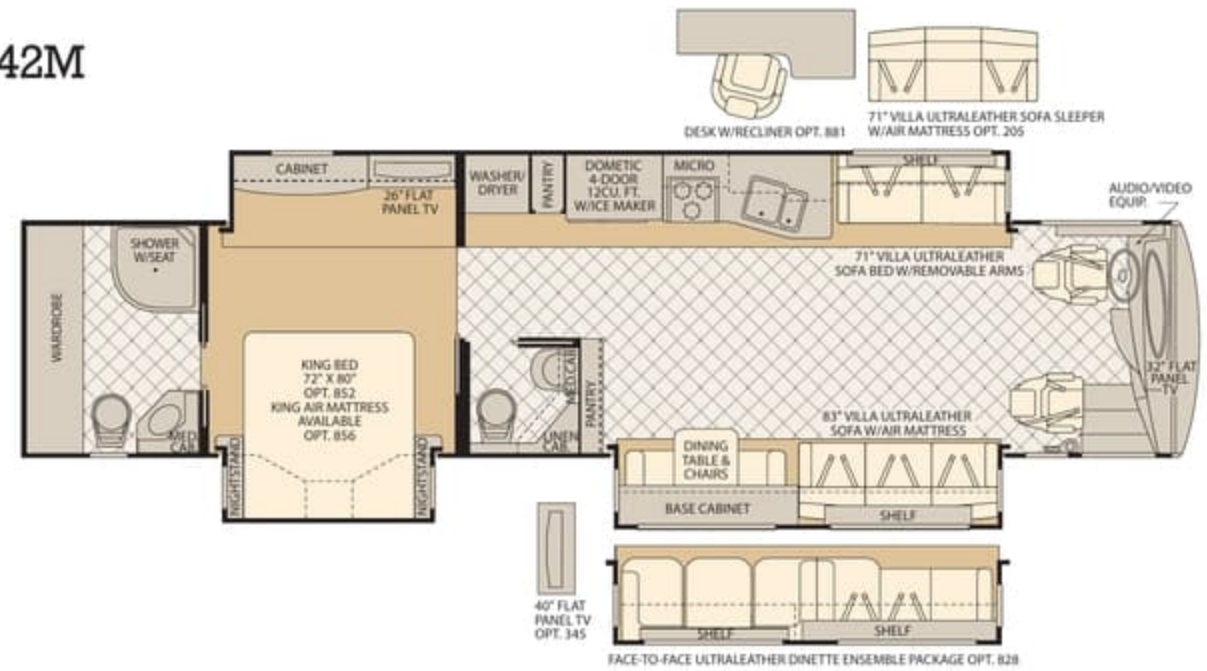
[†] Interior décors and/or woods may be subject to change. Printed fabric samples above are representations of actual fabrics and may be limited due to standard printing technology. For actual samples, see your American Coach dealer.

AMERICAN TRADITION Floor Plans

42P



42M



45Y



Not all available options are shown. See your American Coach dealer or visit our website at www.AmericanCoach.com to see all available options. Seatbelt configuration may vary depending on options chosen.

42P



AMERICAN TRADITION Weights and Measurements

WEIGHTS	42M	42P	45Y
GVWR (lbs) ¹	46,600	46,600	46,600
Front GAWR (lbs) ²	16,600	16,600	16,600
Rear GAWR (lbs) ²	20,000	20,000	20,000
Tag Axle GAWR (lbs) ²	10,000	10,000	10,000
GCWR (lbs) ³	61,600	61,600	61,600
Hitch Rating Weight (lbs) [†]	15,000	15,000	15,000
Tongue Weight (lbs) [†]	1,500	1,500	1,500
DIMENSIONS & CAPACITIES	42M	42P	45Y
Wheelbase (inches)	302"	302"	304"
Overall Length ⁴	42' 11.5"	42' 11.5"	44' 11.5"
Overall Height (w/ SatDome)	13' 2 1/4"	13' 2 1/4"	13' 2 1/4"
Overall Width (maximum) ^{5,6}	102"	102"	102"
Interior Height (maximum)	84"	84"	84"
Interior Width (maximum)	96"	96"	96"
Fresh Water Holding Tank (gal)	90	90	90
Grey Water Holding Tank (gal)	70	70	100
Black Water Holding Tank (gal)	40	40	60
Appliance Propane Tank (gal)(WC) ⁷	30.6	30.6	30.6
Fuel Capacity (gal)	150	150	150
STD Carefree Patio Awnings Front/ Rear	19' 6"	17' 6"	19' 6"
OPT Girard Driver Side Awnings Front/ Rear	13' 4"	12' 5"	12' 5"

Liquid Weight Reference: Water (gal) = (8.3 lbs/ 3.8 kgs) Fuel (gal) = (7.1 lbs/ 3.2 kgs) Propane (gal) = (4.2 lbs/ 1.9 kgs)

Metric Conversion: Multiply pounds x 0.453 to obtain kilograms. Multiply gallons x 3.785 to obtain liters.

Multiply liters x 6.1 to obtain cubic inches.



1. GVWR (Gross Vehicle Weight Rating) is the maximum permissible weight of this fully loaded motor home. The GVWR is equal to or greater than the sum of the (UVW) unloaded vehicle weight plus the (OCCC) occupant cargo carrying capacity*.
2. GAWR (Gross Axle Weight Rating) is the maximum permissible loaded weight a specific axle is designed to carry.
3. GCWR (Gross Combined Weight Rating) is the value specified by the motor home manufacturer as the maximum allowable loaded weight of this motor home with its towed vehicle. Towing and braking capacities may be different. Refer to American Coach and chassis manufacturer's manuals for complete information.
4. Length measured from front bumper to rear bumper (excludes accessories).
5. Excludes safety equipment and awnings.
6. Motor homes feature a body-width over 96" which will restrict your access to certain roads. Before purchasing, you should research any state and/ or province road laws which may affect your usage.
7. Tank manufacturer's listed water capacity (WC). Actual propane capacity is 80% of water listing as required by the safety code.

N/A = Not Applicable

* UVW and OCCC are found on the label containing the federal certification tag in each RV.

† The chassis manufacturer recommends the installation of a supplemental brake control system to activate the brakes on the vehicle or trailer you are towing. Hitch receiver ratings expressed are maximum for the hitch receiver installed and may require the purchase of additional equipment that is dependant on the weight of the towed load. Consult with hitch receiver manufacturer for further information.

IMPORTANT — PLEASE READ: Product information, photography and illustrations included in this publication were as accurate as possible at the time of printing. For further product information and changes, please visit our website at www.AmericanCoach.com or contact your local American Coach dealer. Prices, materials, design and specifications are subject to change without notice. All weights, fuel, liquid capacities and dimensions are approximate. American Coach has designed its recreational vehicles to provide a variety of uses for its customers. Each vehicle features optimal seating, sleeping, storage and fluid capacities. The user is responsible for selecting the proper combination of loads (i.e. occupants, equipment, fluids, cargo, etc.) to ensure that the vehicle's capacities are not exceeded.

AMERICAN TRADITION Weights and Measurements

WEIGHTS	42M	42P	45Y
GVWR (lbs) ¹	46,600	46,600	46,600
Front GAWR (lbs) ²	16,600	16,600	16,600
Rear GAWR (lbs) ²	20,000	20,000	20,000
Tag Axle GAWR (lbs) ²	10,000	10,000	10,000
GCWR (lbs) ³	61,600	61,600	61,600
Hitch Rating Weight (lbs) [†]	15,000	15,000	15,000
Tongue Weight (lbs) [†]	1,500	1,500	1,500
DIMENSIONS & CAPACITIES	42M	42P	45Y
Wheel base (inches)	302"	302"	304"
Overall Length ⁴	42' 11.5"	42' 11.5"	44' 11.5"
Overall Height (w/ SatDome)	13' 2 1/4"	13' 2 1/4"	13' 2 1/4"
Overall Width (maximum) ^{5,6}	102"	102"	102"
Interior Height (maximum)	84"	84"	84"
Interior Width (maximum)	96"	96"	96"
Fresh Water Holding Tank (gal)	90	90	90
Grey Water Holding Tank (gal)	70	70	100
Black Water Holding Tank (gal)	40	40	60
Appliance Propane Tank (gal)(WC) ⁷	30.6	30.6	30.6
Fuel Capacity (gal)	150	150	150
STD Carefree Patio Awnings Front/ Rear	19' 6"	17' 6"	19' 6"
OPT Girard Driver Side Awnings Front/ Rear	13' 4"	12' 5"	12' 5"

Liquid Weight Reference: Water (gal) = (8.3 lbs/ 3.8 kgs) Fuel (gal) = (7.1 lbs/ 3.2 kgs) Propane (gal) = (4.2 lbs/ 1.9 kgs)

Metric Conversion: Multiply pounds x 0.453 to obtain kilograms. Multiply gallons x 3.785 to obtain liters.

Multiply liters x 61 to obtain cubic inches.



1. GVWR (Gross Vehicle Weight Rating) is the maximum permissible weight of this fully loaded motor home. The GVWR is equal to or greater than the sum of the (UVW) unloaded vehicle weight plus the (OCCC) occupant cargo carrying capacity*.
2. GAWR (Gross Axle Weight Rating) is the maximum permissible loaded weight a specific axle is designed to carry.
3. GCWR (Gross Combined Weight Rating) is the value specified by the motor home manufacturer as the maximum allowable loaded weight of this motor home with its towed vehicle. Towing and braking capacities may be different. Refer to American Coach and chassis manufacturer's manuals for complete information.
4. Length measured from front bumper to rear bumper (excludes accessories).
5. Excludes safety equipment and awnings.
6. Motor homes feature a body-width over 96" which will restrict your access to certain roads. Before purchasing, you should research any state and/ or province road laws which may affect your usage.
7. Tank manufacturer's listed water capacity (WC). Actual propane capacity is 80% of water listing as required by the safety code.

N/A = Not Applicable

* UVW and OCCC are found on the label containing the federal certification tag in each RV.

† The chassis manufacturer recommends the installation of a supplemental brake control system to activate the brakes on the vehicle or trailer you are towing. Hitch receiver ratings expressed are maximum for the hitch receiver installed and may require the purchase of additional equipment that is dependant on the weight of the towed load. Consult with hitch receiver manufacturer for further information.

IMPORTANT — PLEASE READ: Product information, photography and illustrations included in this publication were as accurate as possible at the time of printing. For further product information and changes, please visit our website at www.AmericanCoach.com or contact your local American Coach dealer. Prices, materials, design and specifications are subject to change without notice. All weights, fuel, liquid capacities and dimensions are approximate. American Coach has designed its recreational vehicles to provide a variety of uses for its customers. Each vehicle features optimal seating, sleeping, storage and fluid capacities. The user is responsible for selecting the proper combination of loads (i.e. occupants, equipment, fluids, cargo, etc.) to ensure that the vehicle's capacities are not exceeded.

AMERICAN TRADITION Features and Options

INTERIOR AMENITIES

GENERAL AMENITIES

- | | | |
|--|---|--|
| <ul style="list-style-type: none"> • Outlet (Multiple Locations) • Decorative Throw Pillows • Masland® Carpeting • Decorative Wood & Fabric Window Treatments • Accent Rope Lighting • Fan-Tastic® Rain Sensor Power Roof Vents w/3-Speed Fan (3) • Interior MultiPlex "Power Management Plus System" • TV Cable Ready | <ul style="list-style-type: none"> • Solid Wood Face Framed Cabinetry & Moldings • Solid Wood Cabinet Doors • Lined Cabinet Interior Bottoms & Shelves • Decorative Ceiling Plenum • Flush Bolt Latch Decorative Hardware on Pocket Doors • Matte Finish Porcelain Tile Floor at Entry, Galley & Bathroom | <ul style="list-style-type: none"> • Tile Backsplash w/Accent Inserts <p>OPTIONAL</p> <ul style="list-style-type: none"> • 5 Premium Wood & 4 Fabric Décor Choices • Premium Glaze Wood Finish • Custom Interior Request • Factory V.I.P. Delivery • Canadian Standards Build |
|--|---|--|

DRIVER CONVENIENCE

- | | | |
|---|--|--|
| <ul style="list-style-type: none"> • Dash StereoAM, FM, Single CD, MP3, Camera Monitor w/One Way Audio • Dual Dash Monitors • Tire Pressure & Chassis Monitoring • Hardwood Dash Cabinetry w/Corian® Top & Storage Drawers • GPS Navigation System • Villa® 6-Way Power Driver Seat w/Heat, Power Lumbar & Adjustable Arms (Ultraleather) • Villa 6-Way Power Passenger Seat w/Heat, Power Lumbar, Adjustable Arms & Electric Footrest (Ultraleather) • Sirius Satellite Radio • Cruise Control • I.C.C. Light Switch • Smart Wheel w/Leather & Burl Wood Trim w/Manual Tilt, Tip, Telescope | <ul style="list-style-type: none"> • Top Mounted Intermittent Windshield Wiper System w/Wet Arm • Power Sun Shades • Power Driver Window • One Piece Windshield Bonded to Steel • Windshield Washer Bottle, 2 Gallon Reservoir • Driver and Passenger Drink Holder • Driver and Passenger Map Reading Lights • Halogen Head Lamps • SGM Dash Climate Control System • SGM Defrost Control System • Adjustable Brake & Throttle Pedals • Compass & Exterior Temperature Gauge • Low Profile Automotive Style | <p>Dash Instrumentation, Back Lit Gages & Switches</p> <ul style="list-style-type: none"> • Hadley® Air Horns • Tag Axle Dump Switch • Keyless Entry Door Access w/Key Fob • Auxiliary Fog Lamps • Auxiliary Start Switch • CB Radio Ready (Power & Antenna) • Low Level Washer Fluid Indicator • Multiple Auxiliary 12-Volt Dash Receptacles <p>OPTIONAL</p> <ul style="list-style-type: none"> • Villa 6-Way "Spacious" Power Passenger Seat with Heat, Power Lumbar, Adjustable Arms and Electric Footrest (Ultraleather) |
|---|--|--|

LIVING ROOM

- | | | |
|---|---|---|
| <ul style="list-style-type: none"> • Power Step Well Cover • Entry Step Switch at Entry Wall • Lighted Step Well Area • Large Passenger Window • 12V Halogen Ceiling Lighting & Reading Lights | <ul style="list-style-type: none"> • Centralized Audio-Electronics• Day/Night Pleated Shades • Hardwood Front TV Overhead Cabinetry • Raised Panel Cabinet Doors • Centralized Command Center | <ul style="list-style-type: none"> • Automatic Generator Start System • Inverter and Battery Monitor <p>OPTIONAL</p> <ul style="list-style-type: none"> • Power Shades/Blinds |
|---|---|---|

GALLEY

- | | | |
|--|---|---|
| <ul style="list-style-type: none"> • Countertop Edge Treatment, "Non Drip" Edge • Solid Surface Galley Top, Range and Sink Covers • Stainless Steel Sink, Large 60/40 • Tile and Glass Tile Backsplash | <ul style="list-style-type: none"> • with Decorative Inserts • Recessed 3 Burner Cook Top • Solid Hardwood Drawer Fronts • Roller Bearing Drawer Guides, Full Extension • 12V Fluorescent Lighting • Adjustable Shelves | <ul style="list-style-type: none"> • Cabinet Storage for Sink & Range Covers • Task Halogen Lighting • Kohler High Rise Galley Faucet w/Pullout Sprayer • Silverware Tray |
|--|---|---|

BEDROOM

- | | | |
|---|--|---|
| <ul style="list-style-type: none"> • Solid Wood 6 Panel Bath & Bedroom Doors • Solid Wood Framed Headboard w/Padded Fabric Accent • Quilted Bedspread • Queen Innerspring Pillow Top Mattress (60" x 80") • Lift Up Bed w/Under Bed Storage • Polished Mystera® Counter & Nightstand Tops | <ul style="list-style-type: none"> • Overhead Cabinet Above the Bed • Wall Sconce Light Fixtures • 30" Deep Bedroom Slides • Day/Night Pleated Shades • Remote Generator Start Switch • Cedar Lined Ward • Wardrobe Lighting • Full Length Rear Ward • Recessed Bedroom Ceiling Fan | <p>OPTIONAL</p> <ul style="list-style-type: none"> • King Bed with Pillow Top (72" x 80") • Select Comfort Queen Air Mattress w/2 Remotes • Select Comfort King Air Mattress w/2 Remotes • Power Shades/Blinds |
|---|--|---|

BATHROOM

- | | | |
|---|--|--|
| <ul style="list-style-type: none"> • Polished Solid Surface Lavy Countertop w/Porcelain Bowl & Residential Faucet • Medicine Cabinet • Color Coordinated Fiberglass Shower w/Molded Seat-Shelf • Skylight in Shower | <ul style="list-style-type: none"> • Shower Caddy Molded into Shower Surround • Residential Hand Held Shower Head • Obscure Style Decorative Shower Glass Enclosure • Residential China Bowl Flush Toilet w/Hand Sprayer | <ul style="list-style-type: none"> • Micro Mini Blind (Bathroom Window) • Residential China Bowl Vacuum Flush Toilet • Toilet Paper Dispenser, Towel Bar, Towel Rings & Robe Hook |
|---|--|--|

FURNITURE

- | | | |
|--|---|--|
| <ul style="list-style-type: none"> • Villa Ultraleather Sofa Bed • Villa Ultraleather Sofa Bed w/Air Mattress • Solid Surface Dinette Table, Slide Out Extension, 2 Decorative Chairs, 2 Folding Chairs | <ul style="list-style-type: none"> • Dinette w/Deep Base Cabinet Storage, File Storage & Keyboard Tray • Decorative Dinette & Folding Guest Chairs Not Available w/Face to Face Dinette Options | <p>OPTIONAL</p> <ul style="list-style-type: none"> • Villa® Leather J-Love Seat • Dinette Face-to-Face Wrap Around Ensemble (Villa w/Leather) |
|--|---|--|

APPLIANCES

- | | | |
|---|---|---|
| <p>LIVING ROOM</p> <ul style="list-style-type: none"> • Sony® 32" LCD HDTV • Sony® DVD Dream System, Home Entertainment System | <ul style="list-style-type: none"> • TracVision® R5 Series "In Motion" HDTV Compatible, Domed Digital Satellite System | <p>OPTIONAL</p> <ul style="list-style-type: none"> • Sony® 40" Mid Ship (Select Models) LCD HDTV • TracVision® R6 Series • Sony 40" Front TV (45Y) LCD HDTV |
|---|---|---|

GALLEY

- | | | |
|--|--|--|
| <ul style="list-style-type: none"> • Dometic 12 cu. ft. 4 Door Refrigerator, Ice maker, Water Dispenser, 120V/Propane • GE® Over the Range Convection Microwave Oven | <p>OPTIONAL</p> <ul style="list-style-type: none"> • Recessed 3 Burner Range & Oven • Dishwasher w/Cabinet Wood Front | <ul style="list-style-type: none"> • Residential Refrigerator w/Icemaker • Dometic® 14 cu. ft., Sidewise Refrigerator, 120V/Propane, Ice maker |
|--|--|--|

GENERAL

- | | | |
|---|---|--|
| <ul style="list-style-type: none"> • Combination Washer/Dryer (Vented) | <p>OPTIONAL</p> <ul style="list-style-type: none"> • Stacked Washer/Dryer | <ul style="list-style-type: none"> • Washer/Dryer Ready w/Shelves |
|---|---|--|

BEDROOM

- | | |
|---|--|
| <ul style="list-style-type: none"> • Sony DVD Player | <ul style="list-style-type: none"> • Sony® 26" LCD HDTV |
|---|--|

INTERIOR AMENITIES

GENERAL AMENITIES

- | | | |
|--|---|--|
| <ul style="list-style-type: none"> • Outlet (Multiple Locations) • Decorative Throw Pillows • Masland® Carpeting • Decorative Wood & Fabric Window Treatments • Accent Rope Lighting • Fan-Tastic® Rain Sensor Power Roof Vents w/3-Speed Fan (3) • Interior MultiPlex "Power Management Plus System" • TV Cable Ready | <ul style="list-style-type: none"> • Solid Wood Face Framed Cabinetry & Moldings • Solid Wood Cabinet Doors • Lined Cabinet Interior Bottoms & Shelves • Decorative Ceiling Plenum • Flush Bolt Latch Decorative Hardware on Pocket Doors • Matte Finish Porcelain Tile Floor at Entry, Galley & Bathroom | <ul style="list-style-type: none"> • Tile Backsplash w/Accent Inserts <p>OPTIONAL</p> <ul style="list-style-type: none"> • 5 Premium Wood & 4 Fabric Décor Choices • Premium Glaze Wood Finish • Custom Interior Request • Factory V.I.P. Delivery • Canadian Standards Build |
|--|---|--|

DRIVER CONVENIENCE

- | | | |
|--|--|--|
| <ul style="list-style-type: none"> • Dash StereoAM, FM, Single CD, MP3, Camera Monitor w/One Way Audio • Dual Dash Monitors • Tire Pressure & Chassis Monitoring • Hardwood Dash Cabinetry w/Corian®Top & Storage Drawers • GPS Navigation System • Villa® 6-Way Power Driver Seat w/Heat, Power Lumbar & Adjustable Arms (Ultraleather) • Villa 6-Way Power Passenger Seat w/Heat, Power Lumbar, Adjustable Arms & Electric Footrest (Ultraleather) • Sirius Satellite Radio • Cruise Control • I.C.C. Light Switch • Smart Wheel w/Leather & Burl Wood Trim w/Manual Tilt, Tip, Telescope | <ul style="list-style-type: none"> • Top Mounted Intermittent Windshield Wiper System w/Wet Arm • Power Sun Shades • Power Driver Window • One Piece Windshield Bonded to Steel • Windshield Washer Bottle, 2 Gallon Reservoir • Driver and Passenger Drink Holder • Driver and Passenger Map Reading Lights • Halogen Head Lamps • SGM Dash Climate Control System • SGM Defrost Control System • Adjustable Brake & Throttle Pedals • Compass & Exterior Temperature Gauge • Low Profile Automotive Style | <p>Dash Instrumentation, Back Lit Gages & Switches</p> <ul style="list-style-type: none"> • Hadley® Air Horns • Tag Axle Dump Switch • Keyless Entry Door Access w/Key Fob • Auxiliary Fog Lamps • Auxiliary Start Switch • CB Radio Ready (Power & Antenna) • Low Level Washer Fluid Indicator • Multiple Auxiliary 12-Volt Dash Receptacles <p>OPTIONAL</p> <ul style="list-style-type: none"> • Villa 6-Way "Spacious" Power Passenger Seat with Heat, Power Lumbar, Adjustable Arms and Electric Footrest (Ultraleather) |
|--|--|--|

LIVING ROOM

- | | | |
|---|---|---|
| <ul style="list-style-type: none"> • Power Step Well Cover • Entry Step Switch at Entry Wall • Lighted Step Well Area • Large Passenger Window • 12V Halogen Ceiling Lighting & Reading Lights | <ul style="list-style-type: none"> • Centralized Audio-Electronics• Day/Night Pleated Shades • Hardwood Front TV Overhead Cabinetry • Raised Panel Cabinet Doors • Centralized Command Center | <ul style="list-style-type: none"> • Automatic Generator Start System • Inverter and Battery Monitor <p>OPTIONAL</p> <ul style="list-style-type: none"> • Power Shades/Blinds |
|---|---|---|

GALLEY

- | | | |
|--|---|---|
| <ul style="list-style-type: none"> • Countertop Edge Treatment, "Non Drip" Edge • Solid Surface Galley Top, Range and Sink Covers • Stainless Steel Sink, Large 60/40 • Tile and Glass Tile Backsplash | <ul style="list-style-type: none"> • with Decorative Inserts • Recessed 3 Burner Cook Top • Solid Hardwood Drawer Fronts • Roller Bearing Drawer Guides, Full Extension • 12V Fluorescent Lighting • Adjustable Shelves | <ul style="list-style-type: none"> • Cabinet Storage for Sink & Range Covers • Task Halogen Lighting • Kohler High Rise Galley Faucet w/Pullout Sprayer • Silverware Tray |
|--|---|---|

BEDROOM

- | | | |
|---|--|---|
| <ul style="list-style-type: none"> • Solid Wood 6 Panel Bath & Bedroom Doors • Solid Wood Framed Headboard w/Padded Fabric Accent • Quilted Bedspread • Queen Innerspring Pillow Top Mattress (60" x 80") • Lift Up Bed w/Under Bed Storage • Polished Mystera® Counter & Nightstand Tops | <ul style="list-style-type: none"> • Overhead Cabinet Above the Bed • Wall Sconce Light Fixtures • 30" Deep Bedroom Slides • Day/Night Pleated Shades • Remote Generator Start Switch • Cedar Lined Ward • Wardrobe Lighting • Full Length Rear Ward • Recessed Bedroom Ceiling Fan | <p>OPTIONAL</p> <ul style="list-style-type: none"> • King Bed with Pillow Top (72" x 80") • Select Comfort Queen Air Mattress w/2 Remotes • Select Comfort King Air Mattress w/2 Remotes • Power Shades/Blinds |
|---|--|---|

BATHROOM

- | | | |
|---|--|--|
| <ul style="list-style-type: none"> • Polished Solid Surface Lavy Countertop w/Porcelain Bowl & Residential Faucet • Medicine Cabinet • Color Coordinated Fiberglass Shower w/Molded Seat-Shelf • Skylight in Shower | <ul style="list-style-type: none"> • Shower Caddy Molded into Shower Surround • Residential Hand Held Shower Head • Obscure Style Decorative Shower Glass Enclosure • Residential China Bowl Flush Toilet w/Hand Sprayer | <ul style="list-style-type: none"> • Micro Mini Blind (Bathroom Window) • Residential China Bowl Vacuum Flush Toilet • Toilet Paper Dispenser, Towel Bar, Towel Rings & Robe Hook |
|---|--|--|

FURNITURE

- | | | |
|--|---|--|
| <ul style="list-style-type: none"> • Villa Ultraleather Sofa Bed • Villa Ultraleather Sofa Bed w/Air Mattress • Solid Surface Dinette Table, Slide Out Extension, 2 Decorative Chairs, 2 Folding Chairs | <ul style="list-style-type: none"> • Dinette w/Deep Base Cabinet Storage, File Storage & Keyboard Tray • Decorative Dinette & Folding Guest Chairs Not Available w/Face to Face Dinette Options | <p>OPTIONAL</p> <ul style="list-style-type: none"> • Villa® Leather J-Love Seat • Dinette Face-to-Face Wrap Around Ensemble (Villa w/Leather) |
|--|---|--|

APPLIANCES

- | | | |
|---|---|---|
| <p>LIVING ROOM</p> <ul style="list-style-type: none"> • Sony® 32" LCD HDTV • Sony® DVD Dream System, Home Entertainment System | <ul style="list-style-type: none"> • TracVision® R5 Series "In Motion" HDTV Compatible, Domed Digital Satellite System | <p>OPTIONAL</p> <ul style="list-style-type: none"> • Sony® 40" Mid Ship (Select Models) LCD HDTV • TracVision® R6 Series • Sony 40" Front TV (45Y) LCD HDTV |
|---|---|---|

GALLEY

- | | | |
|---|--|--|
| <ul style="list-style-type: none"> • Dometic12 cu. ft. 4 Door Refrigerator, Ice maker, Water Dispenser, 120V/Propane • GE® Over the Range Convection Microwave Oven | <p>OPTIONAL</p> <ul style="list-style-type: none"> • Recessed 3 Burner Range & Oven • Dishwasher w/Cabinet Wood Front | <ul style="list-style-type: none"> • Residential Refrigerator w/Icemaker • Dometic® 14 cu. ft., Sidewise Refrigerator, 120V/Propane, Ice maker |
|---|--|--|

GENERAL

- | | | |
|---|---|--|
| <ul style="list-style-type: none"> • Combination Washer/Dryer (Vented) | <p>OPTIONAL</p> <ul style="list-style-type: none"> • Stacked Washer/Dryer | <ul style="list-style-type: none"> • Washer/Dryer Ready w/Shelves |
|---|---|--|

BEDROOM

- | | |
|---|--|
| <ul style="list-style-type: none"> • Sony DVD Player | <ul style="list-style-type: none"> • Sony® 26" LCD HDTV |
|---|--|

AMERICAN TRADITION Features and Options

HEATING / PLUMBING

- AquaHot Heating System, 50,000 Btu
- Heated Basement
- (3) 15.0M Low Profile Roof Airstats
- Heat Pump on Rear AC Unit
- Hinged Plumbing & Access Panels (Galley & Bath Areas)
- Propane (LPG) Tank
- Fresh Water Gravity Fill
- Holding Tanks w/Low Point Drain Valves
- Multi-Point Water Pump Switching
- Variable Speed Water Pump
- Whole Coach Water Filtration System
- Dual Holding Tank San-T-Flush™ System

OPTIONAL

- Heated Full Tile Floor
- Waste Management System (Macerator)

EXTERIOR AMENITIES

GENERAL AMENITIES

- Diamond Shield Protective Front Mask
- 2000-Watt Pure Sine Wave Inverter / Charger
- Maintenance Free (4) Absorbed Glass Mat 6-Volt Batteries (Group GC2)
- Inverter and Battery Monitor
- Surge Guard™ Electrical System Protection (Includes Surge Protection)
- Energy Management System (50 Amp)
- Battery Disconnect Switches for House and Chassis
- Hella Docking Lamps (4)
- Sliding Lower Front Cap
- Power Generator Slide
- Utility Light-Front & Rear
- Dual Locking Fuel Fill Doors
- Fresh Water Hose (25')
- Sensa Tank Level Monitoring System (Interior & Exterior Monitor)
- Chrome Headlight Bezels
- Spray Wand w/Soap Dispenser & Paper Towel Holder
- Mud Flaps, Front & Rear
- Chrome Hitch Cover, Pin & Clip
- Full Width Rear Rock Guard with Stainless Logo Panel
- Roof Mounted Engine Air Intake
- Two Piece Aluminum Rear Ladder
- Large Rear Engine Access Door w/Power Assist Struts
- Brushed Chrome Rear Access Grill
- Exterior Side Hinged Luggage Doors w/Manual Locks
- Hinge Pin Retention System (Holds Luggage Doors Open)
- Porch Light
- "One Key" System (Luggage & Entry Doors)
- Power Double Entry Step
- Brushed Stainless Kick Plate Under Entry Door
- Electrical Outlets in Exterior Luggage Compartments
- Air Inflation Hose w/Fittings
- Chrome, Heated Side View Mirrors w/Remote Adjustment & Turn Signal Indicators, Side Vision Cameras, Integrated into Mirrors
- Convenience Light in Utility Compartment
- Power Luggage Door locks (Select Doors) w/Remote Key Fob
- Power Cord Reel, 50 AMP

OPTIONAL

- Power Water Hose Reel
- Solar Charging Panel (63w)
- 2 Exterior Graphic Design Choices - Legion or Airwave Graphic Schemes
- Custom Exterior Paint Color Request
- 1st Full Bay 90" Slide Tray
- 1st Full Bay 36" and 54" Slide Tray
- 2nd Full Bay 54" Slide Tray w/AquaHot System

CONSTRUCTION

- Electro-Coated Heavy Duty Steel Framing (Liberty Chassis)
- Aluminum Framed Wall Construction
- Interlocking Aluminum Framing Connections: Roof, Sidewall, Floor
- Steel Construction on Front Bulkhead
- Vacu-bond® Sidewall, Roof, Floor and Rear Wall
- Dense Bead Foam Insulation Throughout
- 5 Layer Flooring with 3" Bead Foam Insulation
- 6 Layer Roof w/4" Bead Foam Insulation (at Centerline)
- DuPont® Exterior Automotive Full Body Paint w/Sand & Buff Finish
- Gel Coat Fiberglass Exterior Sidewalls w/No Wood Substrate
- Full Fiberglass Front & Rear Caps
- Fiberglass Front & Rear Quarter Panels
- Fiberglass Molded Front Bumper
- One-Piece Fiberglass Roof
- w/Radius Corners and Seamless Transition to Caps
- Insulated Aluminum Framed and Paneled Luggage Compartment Doors
- Sound Absorption Material Front, Rear & Engine
- Pebble Finished Fiberglass Basement Lining
- Heated Water & Holding Tank Compartments
- Central Electrical Panel for 120V/12V AC/DC
- TuffPEX® Plumbing System

SAFETY

- Smoke Detector/Alarm
- Carbon (CO) Monoxide Detector
- Fire Extinguisher
- Propane (LP) Leak Detector
- 3 Point Integrated Seat Belts at Driver & Passenger Seats
- Side Docking Lamps (4)
- Momentary Courtesy Lighting at Entry and Passenger Area
- Lighted Exterior Grab Handle w/ Logo
- Emergency Egress Windows (2)
- Turn Signal Indicators

CHASSIS / ENGINE

- Spartan® MMT, Modular Chassis System w/Cummins ISL 425HP
- Liberty Chassis (Patent Pending) w/Electro Coated Platform
- Independent Front Suspension with 55 Degree Steering Angle
- Allison® 3000 MH, 6-Speed Automatic Transmission (w/425 HP Engines)
- 2 Stage Engine Brake (425HP)
- 200 Amp Leece Neville Alternator
- 295/80R 22.5" Radial Tires (Tag & Drive)
- 315/80R LRH 22.5" Radial Tires (Front)
- Group 31 Chassis Batteries (2)
- Air Ride Suspension w/Bilstein® Shocks
- Aluminum Wheels
- Anti-Lock Brake System (ABS)
- Automatic 4-Point Hydraulic Leveling System
- Automatic Traction Control
- Chassis Filter Service Center
- Daytime Running Lights
- Engine Block Heater
- Full Air Brakes w/Automatic Slack Adjusters
- Tire Pressure Check Gauge (Manual)
- Trailer Hitch Receiver 15,000 lbs.

OPTIONAL

- Automatic 4-Point Dual Leveling, Air & Hydraulic

APPLIANCES

- Onan® 10.0kW Quiet Diesel Generator, Power Slide-Out
- Power TV Antenna with Audible "Antennae Up" Warning
- OPT IONAL Exterior TV - Sidewall Mounted (Includes Sony 32" LCD HDTV, Sony Radio AM/FM/CD/DVD w/Remote)
- Additional 2000-Watt Pure Sine Inverter / Charger, (4) AGM Batteries (Select Models)

AWNINGS / WINDOWS / DOORS

- 30" Avionics Entry Door with Dead Bolt & Pneumatic Air Latches
- Entry Screen Door w/Logo Kick Plate
- Powered Entry Door Awning
- Color Coordinated Awnings & Awning Arms
- Carefree Powered Patio Awning w/Wind Sensor (Includes: Patio, Sofa-Dinette Window, Bedroom Window)
- Slide-Out Topper Awnings
- Tinted Dual Pane Windows w/Screens
- OPT IONAL Girard Electric Awning (Includes: Patio, Sofa-Dinette Window, Bedroom Window)

† The chassis manufacturer recommends the installation of a supplemental brake control system to activate the brakes on the vehicle or trailer you are towing. Hitch receiver ratings expressed are maximum for the hitch receiver installed and may require the purchase of additional equipment that is dependent on the weight of the towed load. Consult with hitch receiver manufacturer for further information.

AMERICAN TRADITION Features and Options

HEATING / PLUMBING

- AquaHot Heating System, 50,000 Btu
- Heated Basement
- (3) 15.0M Low Profile Roof Airstats
- Heat Pump on Rear AC Unit
- Hinged Plumbing & Access Panels (Galley & Bath Areas)
- Propane (LPG) Tank
- Fresh Water Gravity Fill
- Holding Tanks w/Low Point Drain Valves
- Multi-Point Water Pump Switching
- Variable Speed Water Pump
- Whole Coach Water Filtration System
- Dual Holding Tank San-T-Flush™ System

OPTIONAL

- Heated Full Tile Floor
- Waste Management System (Macerator)

EXTERIOR AMENITIES

GENERAL AMENITIES

- Diamond Shield Protective Front Mask
- 2000-Watt Pure Sine Wave Inverter / Charger
- Maintenance Free (4) Absorbed Glass Mat 6-Volt Batteries (Group GC2)
- Inverter and Battery Monitor
- Surge Guard™ Electrical System Protection (Includes Surge Protection)
- Energy Management System (50 Amp)
- Battery Disconnect Switches for House and Chassis
- Hella Docking Lamps (4)
- Sliding Lower Front Cap
- Power Generator Slide
- Utility Light-Front & Rear
- Dual Locking Fuel Fill Doors
- Fresh Water Hose (25')
- Sensa Tank Level Monitoring System (Interior & Exterior Monitor)
- Chrome Headlight Bezels
- Spray Wand w/Soap Dispenser & Paper Towel Holder
- Mud Flaps, Front & Rear
- Chrome Hitch Cover, Pin & Clip
- Full Width Rear Rock Guard with Stainless Logo Panel
- Roof Mounted Engine Air Intake
- Two Piece Aluminum Rear Ladder
- Large Rear Engine Access Door w/Power Assist Struts
- Brushed Chrome Rear Access Grill
- Exterior Side Hinged Luggage Doors w/Manual Locks
- Hinge Pin Retention System (Holds Luggage Doors Open)
- Porch Light
- "One Key" System (Luggage & Entry Doors)
- Power Double Entry Step
- Brushed Stainless Kick Plate Under Entry Door
- Electrical Outlets in Exterior Luggage Compartments
- Air Inflation Hose w/Fittings
- Chrome, Heated Side View Mirrors w/Remote Adjustment & Turn Signal Indicators, Side Vision Cameras, Integrated into Mirrors
- Convenience Light in Utility Compartment
- Power Luggage Door locks (Select Doors) w/Remote Key Fob
- Power Cord Reel, 50 AMP

OPTIONAL

- Power Water Hose Reel
- Solar Charging Panel (63w)
- 2 Exterior Graphic Design Choices - Legion or Airwave Graphic Schemes
- Custom Exterior Paint Color Request
- 1st Full Bay 90" Slide Tray
- 1st Full Bay 36" and 54" Slide Tray
- 2nd Full Bay 54" Slide Tray w/AquaHot System

CONSTRUCTION

- Electro-Coated Heavy Duty Steel Framing (Liberty Chassis)
- Aluminum Framed Wall Construction
- Interlocking Aluminum Framing Connections: Roof, Sidewall, Floor
- Steel Construction on Front Bulkhead
- Vacu-bond® Sidewall, Roof, Floor and Rear Wall
- Dense Bead Foam Insulation Throughout
- 5 Layer Flooring with 3" Bead Foam Insulation
- 6 Layer Roof w/4" Bead Foam Insulation (at Centerline)
- DuPont® Exterior Automotive Full Body Paint w/Sand & Buff Finish
- Gel Coat Fiberglass Exterior Sidewalls w/No Wood Substrate
- Full Fiberglass Front & Rear Caps
- Fiberglass Front & Rear Quarter Panels
- Fiberglass Molded Front Bumper
- One-Piece Fiberglass Roof
- w/Radius Corners and Seamless Transition to Caps
- Insulated Aluminum Framed and Paneled Luggage Compartment Doors
- Sound Absorption Material Front, Rear & Engine
- Pebble Finished Fiberglass Basement Lining
- Heated Water & Holding Tank Compartments
- Central Electrical Panel for 120V/12V AC/DC
- TuffPEX® Plumbing System

SAFETY

- Smoke Detector/Alarm
- Carbon (CO) Monoxide Detector
- Fire Extinguisher
- Propane (LP) Leak Detector
- 3 Point Integrated Seat Belts at Driver & Passenger Seats
- Side Docking Lamps (4)
- Momentary Courtesy Lighting at Entry and Passenger Area
- Lighted Exterior Grab Handle w/ Logo
- Emergency Egress Windows (2)
- Turn Signal Indicators

CHASSIS / ENGINE

- Spartan® MMT, Modular Chassis System w/Cummins ISL 425HP
- Liberty Chassis (Patent Pending) w/Electro Coated Platform
- Independent Front Suspension with 55 Degree Steering Angle
- Allison® 3000 MH, 6-Speed Automatic Transmission (w/425 HP Engines)
- 2 Stage Engine Brake (425HP)
- 200 Amp Leece Neville Alternator
- 295/80R 22.5" Radial Tires
- (Tag & Drive)
- 315/80R LRH 22.5" Radial Tires (Front)
- Group 31 Chassis Batteries (2)
- Air Ride Suspension w/Bilstein® Shocks
- Aluminum Wheels
- Anti-Lock Brake System (ABS)
- Automatic 4-Point Hydraulic Leveling System
- Automatic Traction Control
- Chassis Filter Service Center
- Daytime Running Lights
- Engine Block Heater
- Full Air Brakes w/Automatic Slack Adjusters
- Tire Pressure Check Gauge (Manual)
- Trailer Hitch Receiver 15,000 lbs.

OPTIONAL

- Automatic 4-Point Dual Leveling, Air & Hydraulic

APPLIANCES

- Onan® 10.0kW Quiet Diesel Generator, Power Slide-Out
- Power TV Antenna with Audible "Antennae Up" Warning
- OPT IONAL
- Exterior TV – Sidewall Mounted (Includes Sony 32" LCD HDTV, Sony Radio AM/FM/CD/DVD w/Remote)
- Additional 2000-Watt Pure Sine Inverter / Charger, (4) AGM Batteries (Select Models)

AWNINGS / WINDOWS / DOORS

- 30" Avionics Entry Door with Dead Bolt & Pneumatic Air Latches
- Entry Screen Door w/Logo Kick Plate
- Powered Entry Door Awning
- Color Coordinated Awnings & Awning Arms
- Carefree Powered Patio Awning w/Wind Sensor (Includes: Patio, Sofa-Dinette Window, Bedroom Window)
- Slide-Out Topper Awnings
- Tinted Dual Pane Windows w/Screens
- OPT IONAL
- Girard Electric Awning (Includes: Patio, Sofa-Dinette Window, Bedroom Window)

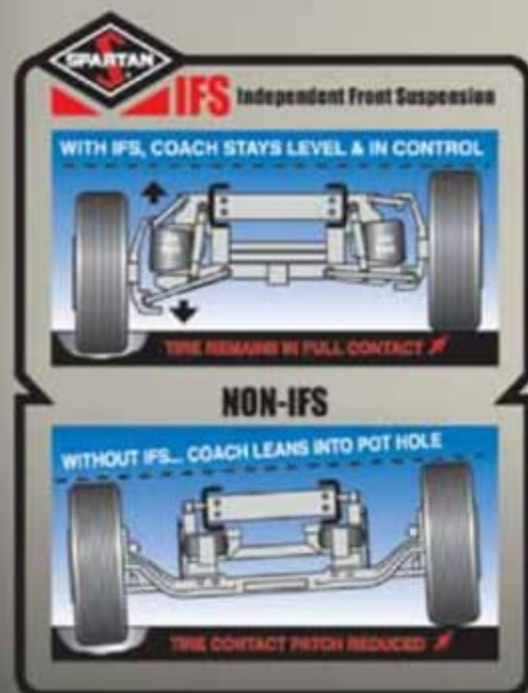
† The chassis manufacturer recommends the installation of a supplemental brake control system to activate the brakes on the vehicle or trailer you are towing. Hitch receiver ratings expressed are maximum for the hitch receiver installed and may require the purchase of additional equipment that is dependent on the weight of the towed load. Consult with hitch receiver manufacturer for further information.



2010 AMERICAN TRADITION

LIBERTY CHASSIS.

Technology this groundbreaking requires an expert team. That's why American Coach and Spartan decided to join forces - to create a rugged, modular chassis system for an incomparable driving experience. Since 2004, the American Coach line has been built on the Liberty Chassis, an integration of superior American Coach framing technology and the Spartan Chassis modular system, providing the strength and structure for a ride unrivaled in the luxury coach industry. So even coupled with a high-performance diesel engine, you'll enjoy the lowest levels of vibration for the smoothest riding coach on the road. Consider it our salute to integrity.



CHASSIS - CUMMINS® 425

Frame: Liberty Chassis

Engine: ISL 425 HP, 8.8L

Torque: 1200 lb-ft @ 1300 RPM

Transmission: Allison® 3000 M H, 6 Speed w/ Electronic Shifter

Alternator Amps: 200 Amp, Leece Neville

Tires: 315/80R 22.5 Michelin® Radial (2)

Tires: 295/80R 22.5 Michelin® Radial (6)



American Coach

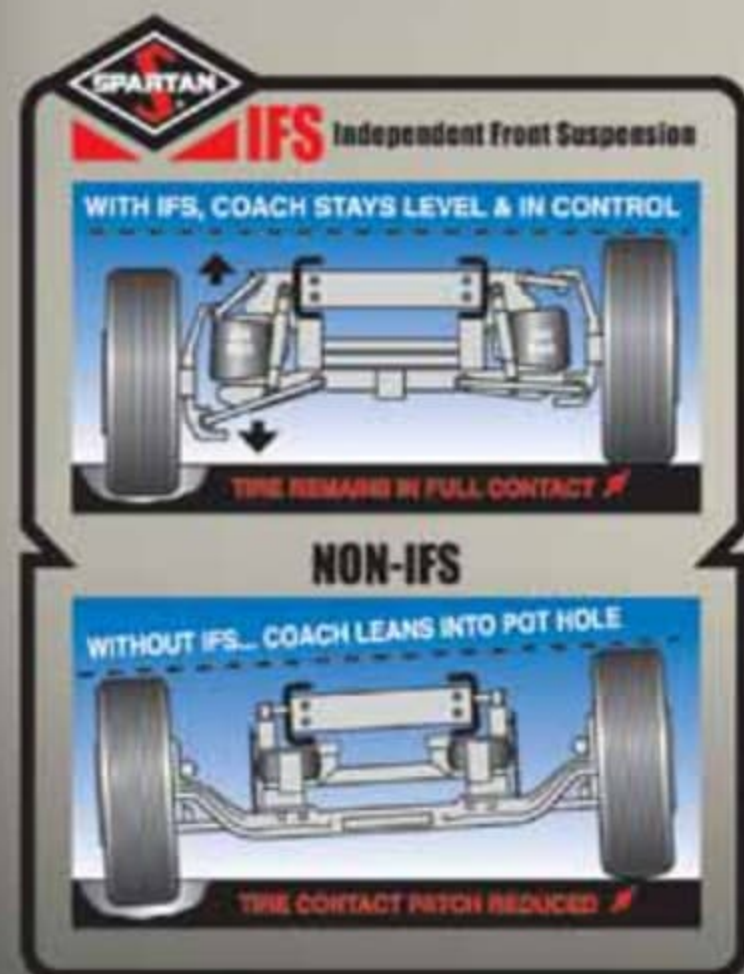
THE OFFICIAL LUXURY COACH OF THE AMERICAN ROAD

For more information, visit us at www.americancoach.com or call us at 800.854.1344

©2009, Fleetwood RV, Inc. Printed in the USA. Inventory Control Number AT10F1, 11/09. Model Year 2010, First Edition.

LIBERTY CHASSIS.

Technology this groundbreaking requires an expert team. That's why American Coach and Spartan decided to join forces - to create a rugged, modular chassis system for an incomparable driving experience. Since 2004, the American Coach line has been built on the Liberty Chassis, an integration of superior American Coach framing technology and the Spartan Chassis modular system, providing the strength and structure for a ride unrivaled in the luxury coach industry. So even coupled with a high-performance diesel engine, you'll enjoy the lowest levels of vibration for the smoothest riding coach on the road. Consider it our salute to integrity.



CHASSIS - CUMMINS® 425

Frame: Liberty Chassis

Engine: ISL 425 HP, 8.8L

Torque: 1200 lb-ft @ 1300 RPM

Transmission: Allison® 3000 MH, 6 Speed w/ Electronic Shifter

Alternator Amps: 200 Amp, Leece Neville

Tires: 315/ 80R 22.5 Michelin® Radial (2)

Tires: 295/ 80R 22.5 Michelin® Radial (6)



American Coach®
THE OFFICIAL LUXURY COACH OF THE AMERICAN ROAD

For more information, visit us at www.americancoach.com or call us at 800.854.1344

©2009. Fleetwood RV, Inc. Printed in the USA. Inventory Control Number AT10F1, 11/09.
Model Year 2010, First Edition.