

# SUNDANCE

BY HEARTLAND

THE NEXT GENERATION OF MID-PROFILE FIFTH WHEELS  
& ULTRA LIGHTWEIGHT TOWABLES



# SUNDANCE

BY HEARTLAND

THE NEXT GENERATION OF MID-PROFILE FIFTH WHEELS  
& ULTRA LIGHTWEIGHT TOWABLES



**LX**  
ULTRA-LITE



### **AFFORDABLE LUXURY**

The all-new SUNDANCE by Heartland Recreational Vehicles is without doubt the most value-packed mid-profile fifth wheel on the market today. With exciting new features such as solid surface counter tops, oil-rubbed bronze hardware, elegant high-backed dinette chairs, air-mattress hide-a-bed sofas, plush recliners and solid hardwood cabinetry with steel ball-bearing drawer guides - the SUNDANCE simply offers more for the money! Choose from a variety of multiple slide-out floorplans, including six different triple-slides offering the ultimate in interior spaciousness. Another great SUNDANCE feature is the location of our main air conditioning unit. By placing the A/C at the rear of the unit, not only does it lower the overall height of the coach, but tests show that the energy and cooling efficiency of the unit is increased up to 20% by only having to blow air a single direction (forward) versus two ways.

### **HIDDEN VALUE**

There are numerous hidden values located throughout the all-new SUNDANCE, including the convenient extra storage found in the bases of each dinette seat - a great place to store valuables or games.



### **TRUE SOLID SURFACE COUNTER TOP OPTION**

Don't settle for lesser quality laminated counter tops or thin fiberglass covered particle-board.

SUNDANCE's solid-surface counter top option features consistency throughout which can be easily repaired in case of scratches.





### **AFFORDABLE LUXURY**

The all-new SUNDANCE by Heartland Recreational Vehicles is without doubt the most value-packed mid-profile fifth wheel on the market today. With exciting new features such as solid surface counter tops, oil-rubbed bronze hardware, elegant high-backed dinette chairs, air-mattress hide-a-bed sofas, plush recliners and solid hardwood cabinetry with steel ball-bearing drawer guides - the SUNDANCE simply offers more for the money! Choose from a variety of multiple slide-out floorplans, including six different triple-slides offering the ultimate in interior spaciousness. Another great SUNDANCE feature is the location of our main air conditioning unit. By placing the A/C at the rear of the unit, not only does it lower the overall height of the coach, but tests show that the energy and cooling efficiency of the unit is increased up to 20% by only having to blow air a single direction (forward) versus two ways.

### **HIDDEN VALUE**

There are numerous hidden values located throughout the all-new SUNDANCE, including the convenient extra storage found in the bases of each dinette seat - a great place to store valuables or games.



### **TRUE SOLID SURFACE COUNTER TOP OPTION**

Don't settle for lesser quality laminated counter tops or thin fiberglass covered particle-board.

SUNDANCE's solid-surface counter top option features consistency throughout which can be easily repaired in case of scratches.





### **STEEL BALL BEARING DRAWER GUIDES**

When it comes to smart designs - the SUNDANCE leads the way with convenient and helpful concepts like our full-extension steel ball bearing drawer guides. The extra strong drawer guides allow us to offer

larger drawers which extend past the cabinet face for maximum usage.



### **HARDWOOD CABINET DOORS & DRAWERS**

Be sure to check when shopping whether other brands have the typical, thin hardwood veneers over chipboard - or real Amish-crafted hardwood doors like SUNDANCE.



### **SPACIOUS INTERIORS**

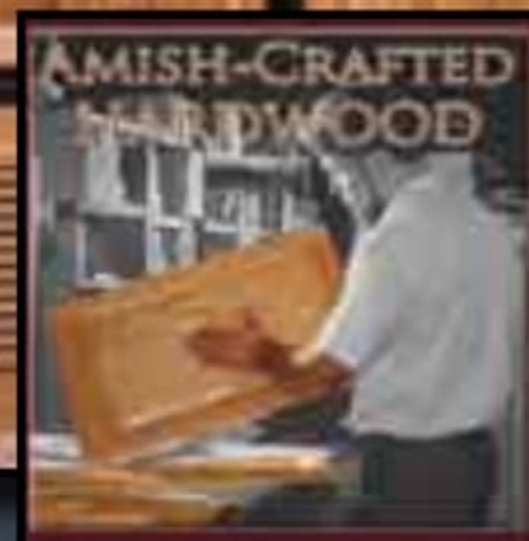
You'll appreciate the open, spacious floorplans designs in each of the SUNDANCE fifth wheels - accentuated by large electric slide-out rooms, elegant ceiling fans and warm hardwood cabinetry with solid-surface counter tops, elegant slide fascia designs, hard sided window valances, day/night shades and loads of base cabinet and overhead storage.



### **STEEL BALL BEARING DRAWER GUIDES**

When it comes to smart designs - the SUNDANCE leads the way with convenient and helpful concepts like our full-extension steel ball bearing drawer guides. The extra strong drawer guides allow us to offer

larger drawers which extend past the cabinet face for maximum usage.



### **HARDWOOD CABINET DOORS & DRAWERS**

Be sure to check when shopping whether other brands have the typical, thin hardwood veneers over chipboard - or real Amish-crafted hardwood doors like SUNDANCE.

### **SPACIOUS INTERIORS**

You'll appreciate the open, spacious floorplans designs in each of the SUNDANCE fifth wheels - accentuated by large electric slide-out rooms, elegant ceiling fans and warm hardwood cabinetry with solid-surface counter tops, elegant slide fascia designs, hard sided window valances, day/night shades and loads of base cabinet and overhead storage.



# REAR LOFT - PERFECT FOR FAMILIES



*Resourceful use of living space, SUNDANCE offers a unique loft design. Perfect for families, couples, or anyone interested in accommodating extra guests. imaginative use of floorspace, including an UPSTAIRS!!! SUNDANCE is the answer to easy, fun living. Just up the stairs you find more sleeping area or extra storage space, you decide.*



# REAR LOFT - PERFECT FOR FAMILIES



*Resourceful use of living space, SUNDANCE offers a unique loft design. Perfect for families, couples, or anyone interested in accommodating extra guests. imaginative use of floorspace, including an UPSTAIRS!!! SUNDANCE is the answer to easy, fun living. Just up the stairs you find more sleeping area or extra storage space, you decide.*





### *ROOMY SLIDE-OUT BEDROOMS*

Each SUNDANCE mid-profile fifth wheel features a roomy queen bed slide-out for maximum comfort and spaciousness. Like fifth wheels costing thousands more, the SUNDANCE features two windows in the slide room for maximum ventilation, a full-width wardrobe with built-in storage shelves, a deep six-drawer dresser and a LCD TV shelf with antenna and cable hook-ups.



### *LUXURIOUS DECORS*

Choose from four elegant decors featuring durable fabrics on the furnishings and window coverings.



**MERLOT**



**MOCHA**



**MAJESTIC BLUE**



**SADDLE**



### **ROOMY SLIDE-OUT BEDROOMS**

Each SUNDANCE mid-profile fifth wheel features a roomy queen bed slide-out for maximum comfort and spaciousness. Like fifth wheels costing thousands more, the SUNDANCE features two windows in the slide room for maximum ventilation, a full-width wardrobe with built-in storage shelves, a deep six-drawer dresser and a LCD TV shelf with antenna and cable hook-ups.



### **LUXURIOUS DECORS**

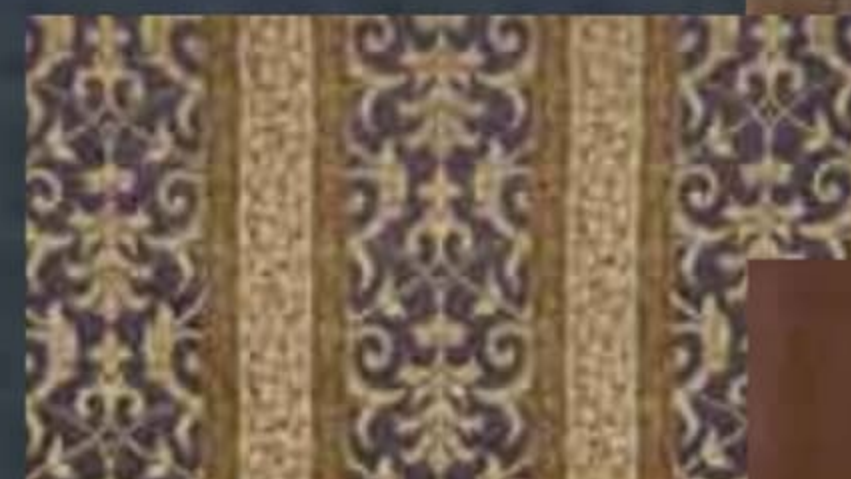
Choose from four elegant decors featuring durable fabrics on the furnishings and window coverings.



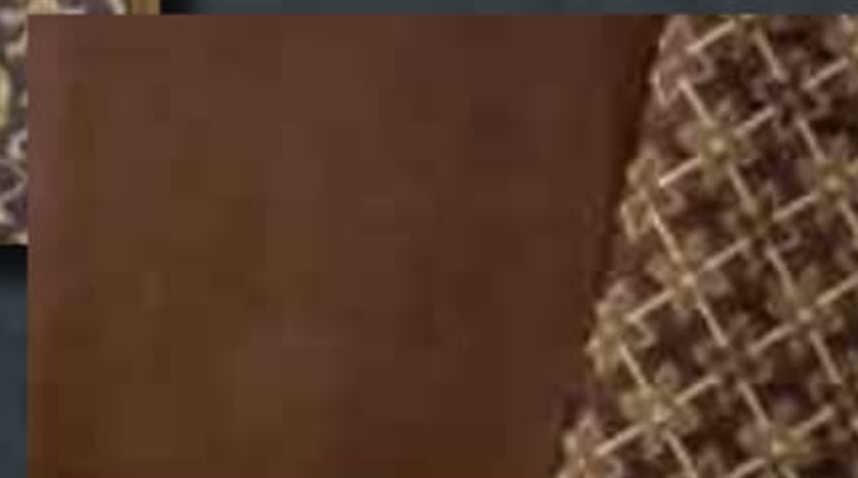
**MERLOT**



**MOCHA**



**MAJESTIC BLUE**



**SADDLE**



## MORE STORAGE!

You'll love the way SUNDANCE maximizes storage opportunities by smart engineering and utilizing each and every square inch of the coach to provide our customers with more room for their belongings!



### UNIVERSAL DOCKING CENTER

The FIRST of its kind in a mid-profile fifth wheel! The SUNDANCE UDC offers all of the unit systems hook-ups, including tank pull handles, in a single, concealed exterior compartment! Normally reserved for coaches costing tens of thousands more - SUNDANCE brings this feature to a price point where customers will really appreciate its everyday value. Because the underbelly of the SUNDANCE is both enclosed and heated, the gate valves are protected against the elements.



### MORE GREAT FEATURES...

SUNDANCE customers can enjoy listening to their favorite CD or radio station outside the coach through the **EXTERIOR SPEAKERS**. True fifth wheel enthusiasts love the optional **16" TIRES** with aluminum rims - providing better towing.

The optional **HITCH COVER** provides not only a great look - but improved aerodynamics.





## MORE STORAGE!

You'll love the way SUNDANCE maximizes storage opportunities by smart engineering and utilizing each and every square inch of the coach to provide our customers with more room for their belongings!



### UNIVERSAL DOCKING CENTER

The FIRST of its kind in a mid-profile fifth wheel! The SUNDANCE UDC offers all of the unit systems hook-ups, including tank pull handles, in a single, concealed exterior compartment! Normally reserved for coaches costing tens of thousands more - SUNDANCE brings this feature to a price point where customers will really appreciate its everyday value. Because the underbelly of the SUNDANCE is both enclosed and heated, the gate valves are protected against the elements.



### MORE GREAT FEATURES...

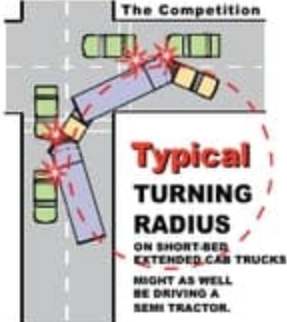
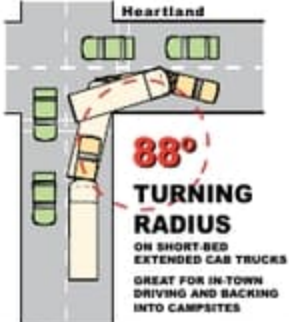
SUNDANCE customers can enjoy listening to their favorite CD or radio station outside the coach through the **EXTERIOR SPEAKERS**. True fifth wheel enthusiasts love the optional **16" TIRES** with aluminum rims - providing better towing.

The optional **HITCH COVER** provides not only a great look - but improved aerodynamics.



# SUPERIOR CONSTRUCTION AND DESIGN TRANSLATE INTO A SUPERIOR VALUE!

**ACHIEVE AN 88° TURN!  
IN A SHORT-BED, EXTENDED CAB TRUCK  
ONLY IN A HEARTLAND!**



**PATENT PENDING!**

**DON'T ACCEPT ANY IMITATIONS - IF YOU CAN'T TURN 88° IT'S NOT A HEARTLAND!**

*Perfect for Short-Bed,  
Extended-Cab Trucks*



**Lightweight  
ALUMINUM**

**2" THICK  
SIDEWALLS!**



Just an 1/8" thick foam cup protects your hand from scalding hot coffee... imagine what nearly 2" of block foam does for your Laminated Heartland Sidewall!!

Double Welded, Fully Laminated  
Sidewall Construction

**ZERO° TESTED!**

Heartland 5th wheel Construction has been subjected to rigid testing in the famous DOMETIC™ extreme temperature testing chamber where it passed with flying colors! The chamber is set to 0° to test the unit's heating efficiency, followed by being set at 100° to test its cooling efficiency. With our thick 2" laminated walls; enclosed and heated underbelly; and insulated floor - the interior of the Heartland coach remained warm and comfy during the sub-freezing test and nice and cool during the heat test!



For more details, visit our web site:  
[www.HEARTLANDRV5.com](http://www.HEARTLANDRV5.com)



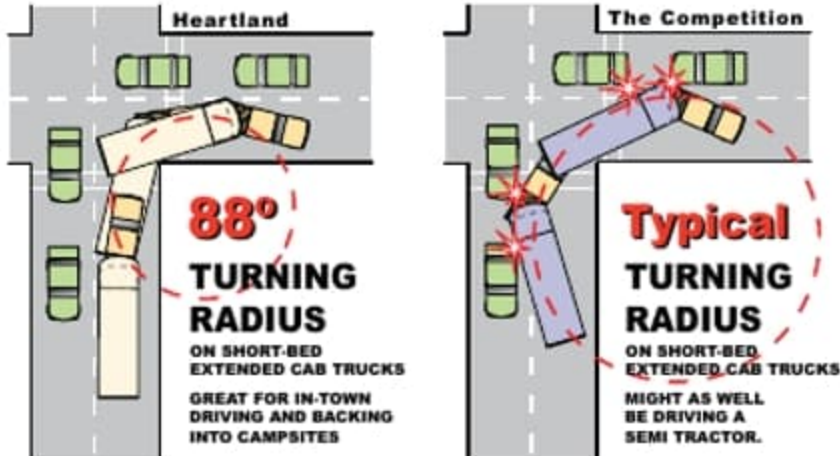
**AIR-MATTRESS**

Yet another SUNDANCE smart design - the optional air-mattress hide-a-bed sofa offers the ultimate in comfort, as well as a deep drawer that is perfect for storing throw blankets and other items.

# SUPERIOR CONSTRUCTION AND DESIGN TRANSLATE INTO A SUPERIOR VALUE!

## ACHIEVE AN 88° TURN!

IN A SHORT-BED, EXTENDED CAB TRUCK  
ONLY IN A HEARTLAND!



## PATENT PENDING!

DON'T ACCEPT ANY IMITATIONS - IF YOU  
CAN'T TURN 88° IT'S NOT A HEARTLAND!

*Perfect for Short-Bed,  
Extended-Cab Trucks*



**2" THICK  
SIDEWALLS!**

Double Welded, Fully Laminated  
Sidewall Construction

Lightweight  
ALUMINUM

Just an 1/8" thick foam  
cup protects your  
hand from scalding  
hot coffee...  
imagine what nearly  
2" of block foam does  
for your Laminated  
Heartland Sidewall!

## ZERO° TESTED!

Heartland 5th wheel Construction has been subjected to rigid testing in the famous DOMETIC™ extreme temperature testing chamber where it passed with flying colors! The chamber is set to 0° to test the unit's heating efficiency, followed by being set at 100° to test its cooling efficiency. With our thick 2" laminated walls; enclosed and heated underbelly; and insulated floor - the interior of the Heartland coach remained warm and comfy during the sub-freezing test and nice and cool during the heat test!



For more details, visit our web site:  
[www.HEARTLANDRVs.com](http://www.HEARTLANDRVs.com)



Yet another SUNDANCE smart design - the optional air-mattress hide-a-bed sofa offers the ultimate in comfort, as well as a deep drawer that is perfect for storing throw blankets and other items.



## TRUE SOLID-SURFACE.



SUNDANCE

SUNDANCE's HANEX™ TRUE RESIDENTIAL SOLID SURFACE Counter Tops increase the usability, beauty and value of our coaches. The advanced blend of natural materials and pure, acrylic polymer is formed over a strong plywood base, providing design versatility and long-term performance to our customers. Hanex™ is one of the toughest counter tops in the world that is both durable and RENEWABLE.

RENEWABLE means it is the same consistency through and through and if scratched or chipped, can be easily repaired so that it looks like new!

The competition on the other hand... offers only a thin layer of FIBERglass, adhered to lesser quality particle board material that disintegrates when it gets wet. The FIBERS of these counter tops tend to stick out of the bottom edges and are painful to the touch.

## vs. THIN FIBERGLASS.



THE COMPETITION

### Built-In Black Tank Flush System

No more dragging hoses inside and using messy toilet wands. Our built in black tank flush system offers spray heads INSIDE the black tank acting like a power washer to assist in making sure the tank is properly and completely emptied when dumping!



SUNDANCE



### OPTIONAL 50-AMP SERVICE FOR DUAL A/Cs

This detachable, 50-Amp electrical power cord is rarely available on a coach in this price point. More and more campers are staying for longer periods of time and the SUNDANCE offers both the spaciousness and amenities for even the most discriminating buyers. The diamond-plated steel bumper provides a great place for bike racks while protecting the coach when maneuvering.





## TRUE SOLID-SURFACE.



SUNDANCE

SUNDANCE's HANEX™ TRUE RESIDENTIAL SOLID SURFACE Counter Tops increase the usability, beauty and value of our coaches. The advanced blend of natural materials and pure, acrylic polymer is formed over a strong plywood base, providing design versatility and long-term performance to our customers. Hanex™ is one of the toughest counter tops in the world that is both durable and RENEWABLE.

RENEWABLE means it is the same consistency through and through and if scratched or chipped, can be easily repaired so that it looks like new!

The competition on the other hand... offers only a thin layer of FIBERglass, adhered to lesser quality particle board material that disintegrates when it gets wet. The FIBERS of these counter tops tend to stick out of the bottom edges and are painful to the touch.

## vs. THIN FIBERGLASS.



THE COMPETITION

### Built-In Black Tank Flush System

No more dragging hoses inside and using messy toilet wands. Our built in black tank flush system offers spray heads INSIDE the black tank acting like a power washer to assist in making sure the tank is properly and completely emptied when dumping!

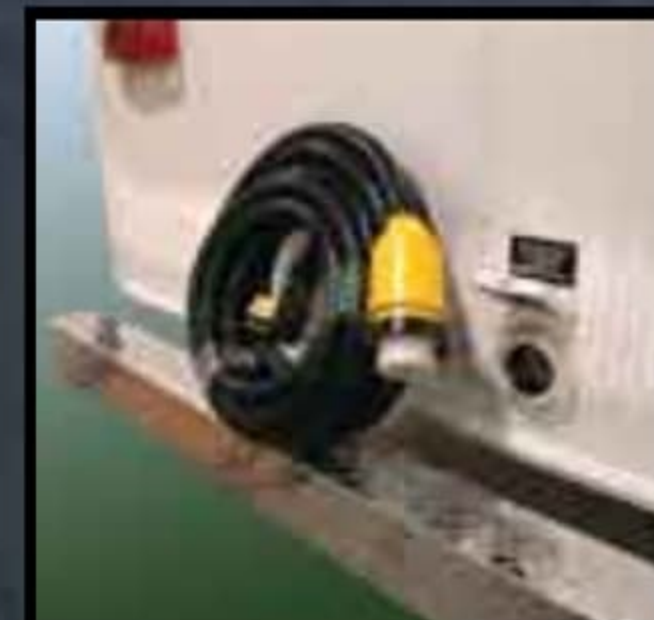


SUNDANCE



### OPTIONAL 50-AMP SERVICE FOR DUAL A/Cs

This detachable, 50-Amp electrical power cord is rarely available on a coach in this price point. More and more campers are staying for longer periods of time and the SUNDANCE offers both the spaciousness and amenities for even the most discriminating buyers. The diamond-plated steel bumper provides a great place for bike racks while protecting the coach when maneuvering.



# SUNDANCE

## MID-PROFILE FIFTH WHEELS

### STANDARD FEATURES

#### EXTERIOR

- Universal Docking Center - Hook-Ups Concealed in One Easy-to-Access Compartment
- E-Z Lube Hubs
- Rain Gutters w/Downspouts
- Unbeatable Pass-Through Storage
- Chrome Rear Ladder
- Diamond-Plated Accent Bumper
- Front Jacks w/Quick Release Pins
- Flush Floor Electric Slides
- Electric Outlet for Awning Lights
- Exterior Stereo Speakers
- Cable TV Jack - Doorside
- 1-Piece ABS Underbelly
- FLEXFOIL Insulation in Underbelly
- FLEXFOIL Insulation on Bath/Bed Deck
- 1-Piece Rubber Roofing Material
- Amber Porch Light
- Sewer Hose Storage in Bumper
- Large Assist Entry Handle
- Dual 30 lb. LP Tanks
- Exterior Propane Quick Connect
- 10" I-Beam Frame
- Radius Entry Step w/ Light & Switch
- 30" Radius Entry Door w/Dead Bolt at Main Entry
- Water Heater Bypass
- 30 Amp Electrical Service
- Security Light
- Forced Air Heated & Enclosed Holding Tanks and Valves
- Aerodynamic Fiberglass Front Cap with LED marker lighting
- High-End Graphics Package
- Patio Awning
- Triple Entry Step
- Break Away Switch
- Electric Powered Front Jacks (5W)
- Overall Height Under 12' (most models)

### STANDARD FEATURES

#### PREMIER KITCHEN

- Larger Overhead Cabinets
- Large Stainless Steel Kitchen Sink
- Full Extension Ball-Bearing Drawer Guides
- Drawer in Pantry
- Spice Rack in Cabinet Base
- Trash Can Space in Cabinet (some models)
- Hi-Rise Kitchen Faucet w/Sprayer
- Residential Quality Linoleum
- Power Range Hood w/Light
- Oven with igniter

#### BATH

- Neo-Angle Shower
- Medicine Cab. w/Mirror & Lights
- Porcelain Toilet

#### BEDROOM

- Laundry chute
- Deluxe Innerspring Mattress
- Lift-Up, Finished Bed Storage
- Shoe Rack in Closet Bedroom Slide Models
- LCD TV Shelf in Bedroom
- Second A/C Prep

#### LIVING AREA

- Multiple Electrical Outlets in Living Area
- Enclosed Control Panel at Entry
- 10 gal. W/H Gas/Electric DSI (16.2 gallon / hour quick recovery)
- Residential Style Light Switches
- High-End Residential Rockers
- High-End Window Valances
- Plush Carpet with Padding
- Jackknife Sofa
- Coat Closet (most models)
- Flush Floor Slide-Outs
- Smoke Detector
- Carbon Monoxide Detector
- Slide Windows in Both Ends of Slide Outs
- Adjustable A/C Vents for Improved Air Flow

### POPULAR FEATURES:

- PATENTED Turning Radius – achieve a 88° turn on a short bed truck!
- Black Tank Flush System
- 12V AM/FM CD/DVD & MP3 Player
- 60" x 80" Queen Bed
- Day/Night Shades
- Snap Jack Pins for Landing Gear
- Universal Docking Center
- Porcelain Toilet
- 35,000 BTU Furnace
- Dark Tinted Safety Glass Windows
- Storage in the Dinette Chairs

### OPTIONS:

- Solid Surface Countertops
- Solid Surface Countertop extension (where avail)
- Air Mattress Sofa-Bed w/Drawer
- 50 Amp Service
- Hitch Cover (5th Wheel only)
- Spare Tire
- Ceiling Fan
- Outside Shower
- 15" Aluminum Wheels w/5,200# axles
- 16" Aluminum Wheels w/6,000# axles
- 19" LCD TV (where available) • 27" LCD (living area)
- Electric Rear Jacks
- Fireplace (where available)
- High-Back, Padded Free Standing Dinette Chairs and Table with Storage in Both
- Leather Euro Recliners with Ottoman
- 8 Cu. Ft. Refrigerator
- Equa-Flex
- 2nd Rocker Chair (1 STD.)
- Electric Power Awning
- 15,000 BTU A/C
- Dual Pane Windows
- Retractable Toy Lock

Product information is as accurate as possible as of the date of publication of this brochure. Due to Heartland's commitment to continuous product improvement - floorplans, materials, components, features, specifications, options, etc. are subject to change without notice or obligation to Heartland Recreational Vehicles. SUNDANCE specifications apply to coaches beginning with serial number 204192

**Tow Vehicle Caution:** Owners of Heartland recreational vehicles are solely responsible for the selection and proper use of tow vehicles. All customers should consult with a motor vehicle manufacturer or their dealer concerning the purchase and use of suitable tow vehicles for Heartland products. Heartland disclaims any liability or damages suffered as a result of the selection, operation, use or misuse of a tow vehicle. Heartland's limited warranty does not cover damage to the recreational vehicle or the tow vehicle as a result of the selection of the tow vehicle.

See your nearest Heartland dealer to review a current model.

# SUNDANCE MID-PROFILE FIFTH WHEELS

## STANDARD FEATURES

### EXTERIOR

- Universal Docking Center - Hook-Ups Concealed in One Easy-to-Access Compartment
- E-Z Lube Hubs
- Rain Gutters w/Downspouts
- Unbeatable Pass-Through Storage
- Chrome Rear Ladder
- Diamond-Plated Accent Bumper
- Front Jacks w/Quick Release Pins
- Flush Floor Electric Slides
- Electric Outlet for Awning Lights
- Exterior Stereo Speakers
- Cable TV Jack - Doorside
- 1-Piece ABS Underbelly
- FLEXFOIL Insulation in Underbelly
- FLEXFOIL Insulation on Bath/Bed Deck
- 1-Piece Rubber Roofing Material
- Amber Porch Light
- Sewer Hose Storage in Bumper
- Large Assist Entry Handle
- Dual 30 lb. LP Tanks
- Exterior Propane Quick Connect
- 10" I-Beam Frame
- Radius Entry Step w/ Light & Switch
- 30" Radius Entry Door w/Dead Bolt at Main Entry
- Water Heater Bypass
- 30 Amp Electrical Service
- Security Light
- Forced Air Heated & Enclosed Holding Tanks and Valves
- Aerodynamic Fiberglass Front Cap with LED marker lighting
- High-End Graphics Package
- Patio Awning
- Triple Entry Step
- Break Away Switch
- Electric Powered Front Jacks (5W)
- Overall Height Under 12' (most models)

## STANDARD FEATURES

### PREMIER KITCHEN

- Larger Overhead Cabinets
- Large Stainless Steel Kitchen Sink
- Full Extension Ball-Bearing Drawer Guides
- Drawer in Pantry
- Spice Rack in Cabinet Base
- Trash Can Space in Cabinet (some models)
- Hi-Rise Kitchen Faucet w/Sprayer
- Residential Quality Linoleum
- Power Range Hood w/Light
- Oven with igniter

### BATH

- Neo-Angle Shower
- Medicine Cab. w/Mirror & Lights
- Porcelain Toilet

### BEDROOM

- Laundry chute
- Deluxe Innerspring Mattress
- Lift-Up, Finished Bed Storage
- Shoe Rack in Closet Bedroom Slide Models
- LCD TV Shelf in Bedroom
- Second A/C Prep

### LIVING AREA

- Multiple Electrical Outlets in Living Area
- Enclosed Control Panel at Entry
- 10 gal. W/H Gas/Electric DSI (16.2 gallon / hour quick recovery)
- Residential Style Light Switches
- High-End Residential Rockers
- High-End Window Valances
- Plush Carpet with Padding
- Jackknife Sofa
- Coat Closet (most models)
- Flush Floor Slide-Outs
- Smoke Detector
- Carbon Monoxide Detector
- Slide Windows in Both Ends of Slide Outs
- Adjustable A/C Vents for Improved Air Flow

## POPULAR FEATURES:

- PATENTED Turning Radius – achieve a 88° turn on a short bed truck!
- Black Tank Flush System
- 12V AM/FM CD/DVD & MP3 Player
- 60" x 80" Queen Bed
- Day/Night Shades
- Snap Jack Pins for Landing Gear
- Universal Docking Center
- Porcelain Toilet
- 35,000 BTU Furnace
- Dark Tinted Safety Glass Windows
- Storage in the Dinette Chairs

## OPTIONS:

- Solid Surface Countertops
- Solid Surface Countertop extension (where avail)
- Air Mattress Sofa-Bed w/Drawer
- 50 Amp Service
- Hitch Cover (5th Wheel only)
- Spare Tire
- Ceiling Fan
- Outside Shower
- 15" Aluminum Wheels w/5,200# axles
- 16" Aluminum Wheels w/6,000# axles
- 19" LCD TV (where available) • 27" LCD (living area)
- Electric Rear Jacks
- Fireplace (where available)
- High-Back, Padded Free Standing Dinette Chairs and Table with Storage in Both
- Leather Euro Recliners with Ottoman
- 8 Cu. Ft. Refrigerator
- Equa-Flex
- 2nd Rocker Chair (1 STD.)
- Electric Power Awning
- 15,000 BTU A/C
- Dual Pane Windows
- Retractable Toy Lock

Product information is as accurate as possible as of the date of publication of this brochure. Due to Heartland's commitment to continuous product improvement - floorplans, materials, components, features, specifications, options, etc. are subject to change without notice or obligation to Heartland Recreational Vehicles. SUNDANCE specifications apply to coaches beginning with serial number 204192.

**Tow Vehicle Caution:** Owners of Heartland recreational vehicles are solely responsible for the selection and proper use of tow vehicles. All customers should consult with a motor vehicle manufacturer or their dealer concerning the purchase and use of suitable tow vehicles for Heartland products. Heartland disclaims any liability or damages suffered as a result of the selection, operation, use or misuse of a tow vehicle. Heartland's limited warranty does not cover damage to the recreational vehicle or the tow vehicle as a result of the selection of the tow vehicle.

See your nearest Heartland dealer to review a current model.



## MID-PROFILE SUNDANCE MODELS ARE DESIGNED TO MEASURE 12' OR LESS TO EASILY FIT IN MOST STORAGE FACILITIES



GVWR: 12,100 lb.  
Dry: 8,600 lb.  
Hitch: 1,940 lb.

Length: 30'-10"  
Height: 11'-10"  
12'-0" w/16" Wheels Opt.

Fresh: 57 gal.  
Gray: 80 gal.  
Black: 40 gal.

**2800RLS**



GVWR: 12,080 lb.  
Dry: 9,020 lb.  
Hitch: 1,930 lb.

Length: 31'-8"  
Height: 11'-10"  
12'-0" w/16" Wheels Opt.

Fresh: 57 gal.  
Gray: 80 gal.  
Black: 40 gal.

**2900MK**



GVWR: 11,890 lb.  
Dry: 9,695 lb.  
Hitch: 1,735 lb.

Length: 33'-8"  
Height: 11'-10"  
12'-0" w/16" Wheels Opt.

Fresh: 57 gal.  
Gray: 80 gal.  
Black: 80 gal.

**2998RB**



GVWR: TBD  
Dry: TBD  
Hitch: TBD

Length: 31'-8"  
Height: 11'-10"  
12'-0" w/16" Wheels Opt.

Fresh: 57 gal.  
Gray: 80 gal.  
Black: 40 gal.

**3000 RK**



GVWR: TBD  
Dry: TBD  
Hitch: TBD

Length: 32'-10"  
Height: 11'-10"  
12'-0" w/16" Wheels Opt.

Fresh: 57 gal.  
Gray: 80 gal.  
Black: 40 gal.

**3100 ES**



## MID-PROFILE SUNDANCE MODELS ARE DESIGNED TO MEASURE 12' OR LESS TO EASILY FIT IN MOST STORAGE FACILITIES



GVWR: 12,100 lb.  
Dry: 8,600 lb.  
Hitch: 1,940 lb.

Length: 30'-10"  
Height: 11'-10"  
12'-0" w/16" Wheels Opt.

Fresh: 57 gal.  
Gray: 80 gal.  
Black: 40 gal.

**2800RLS**



GVWR: 12,080 lb.  
Dry: 9,020 lb.  
Hitch: 1,930 lb.

Length: 31'-8"  
Height: 11'-10"  
12'-0" w/16" Wheels Opt.

Fresh: 57 gal.  
Gray: 80 gal.  
Black: 40 gal.

**2900MK**



GVWR: 11,890 lb.  
Dry: 9,695 lb.  
Hitch: 1,735 lb.

Length: 33'-8"  
Height: 11'-10"  
12'-0" w/16" Wheels Opt.

Fresh: 57 gal.  
Gray: 80 gal.  
Black: 80 gal.

**2998RB**



GVWR: TBD  
Dry: TBD  
Hitch: TBD

Length: 31'-8"  
Height: 11'-10"  
12'-0" w/16" Wheels Opt.

Fresh: 57 gal.  
Gray: 80 gal.  
Black: 40 gal.

**3000 RK**



GVWR: TBD  
Dry: TBD  
Hitch: TBD

Length: 32'-10"  
Height: 11'-10"  
12'-0" w/16" Wheels Opt.

Fresh: 57 gal.  
Gray: 80 gal.  
Black: 40 gal.

**3100 ES**



**3200RE**

GVWR: 13,840 lb.  
Dry: 10,185 lb.  
Hitch: 1,840 lb.

Length: 34'-9"  
Height: 11'-10"  
12'-0" w/16" Wheels Opt.

Fresh: 57 gal.  
Gray: 80 gal.  
Black: 40 gal.



**3300SK**

GVWR: 12,220 lb.  
Dry: 9,740 lb.  
Hitch: 2,060 lb.

Length: 34'-1"  
Height: 11'-10"  
12'-0" w/16" Wheels Opt.

Fresh: 57 gal.  
Gray: 80 gal.  
Black: 40 gal.



**FULL-PROFILE 3300FB**

GVWR: 12,000 lb.  
Dry: 9,760 lb.  
Hitch: 1,860 lb.

Length: 35'-1"  
Height: 12'-4"

Fresh: 57 gal.  
Gray: 80 gal.  
Black: 80 gal.

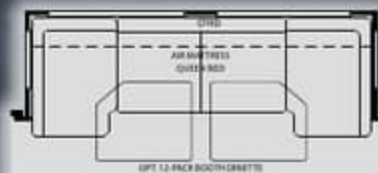


**FULL-PROFILE 3300RLB**

GVWR: 13,900 lb.  
Dry: 9,850 lb.  
Hitch: 1,910 lb.

Length: 35'-9"  
Height: 12'-7"

Fresh: 57 gal.  
Gray: 80 gal.  
Black: 40 gal.

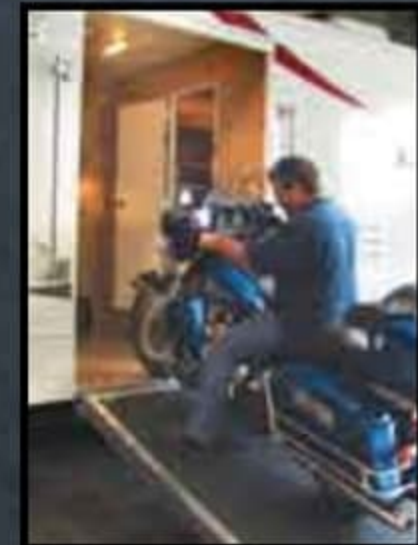


**3300 RCB**

GVWR: TBD  
Dry: TBD  
Hitch: TBD

Length: 35'-9"  
Height: 11'-10"  
12'-0" w/16" Wheels Opt.

Fresh: 57 gal.  
Gray: 80 gal.  
Black: 40 gal.





**3200RE**

GVWR: 13,840 lb.  
Dry: 10,185 lb.  
Hitch: 1,840 lb.

Length: 34'-9"  
Height: 11'-10"  
12'-0" w/16" Wheels Opt.

Fresh: 57 gal.  
Gray: 80 gal.  
Black: 40 gal.



**3300SK**

GVWR: 12,220 lb.  
Dry: 9,740 lb.  
Hitch: 2,060 lb.

Length: 34'-1"  
Height: 11'-10"  
12'-0" w/16" Wheels Opt.

Fresh: 57 gal.  
Gray: 80 gal.  
Black: 40 gal.

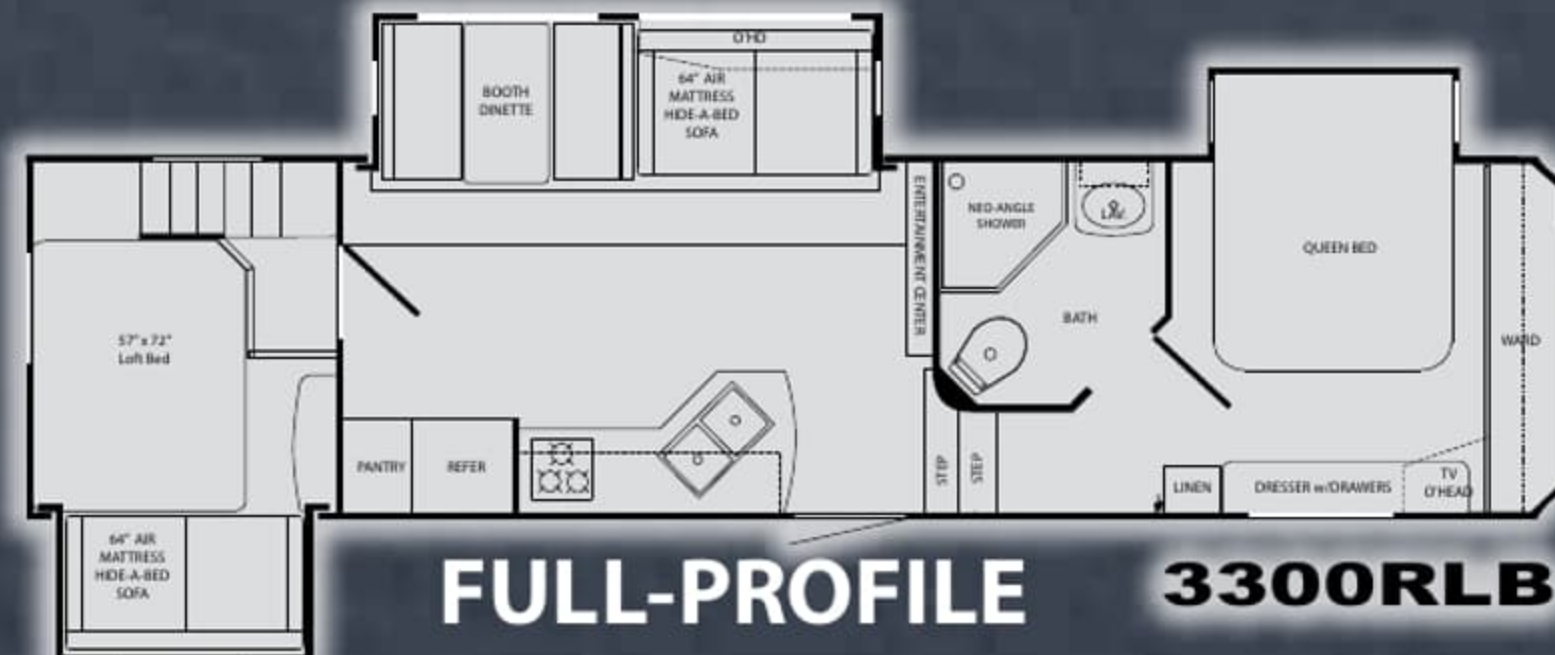


**FULL-PROFILE 3300FB**

GVWR: 12,000 lb.  
Dry: 9,760 lb.  
Hitch: 1,860 lb.

Length: 35'-1"  
Height: 12'-4"

Fresh: 57 gal.  
Gray: 80 gal.  
Black: 80 gal.

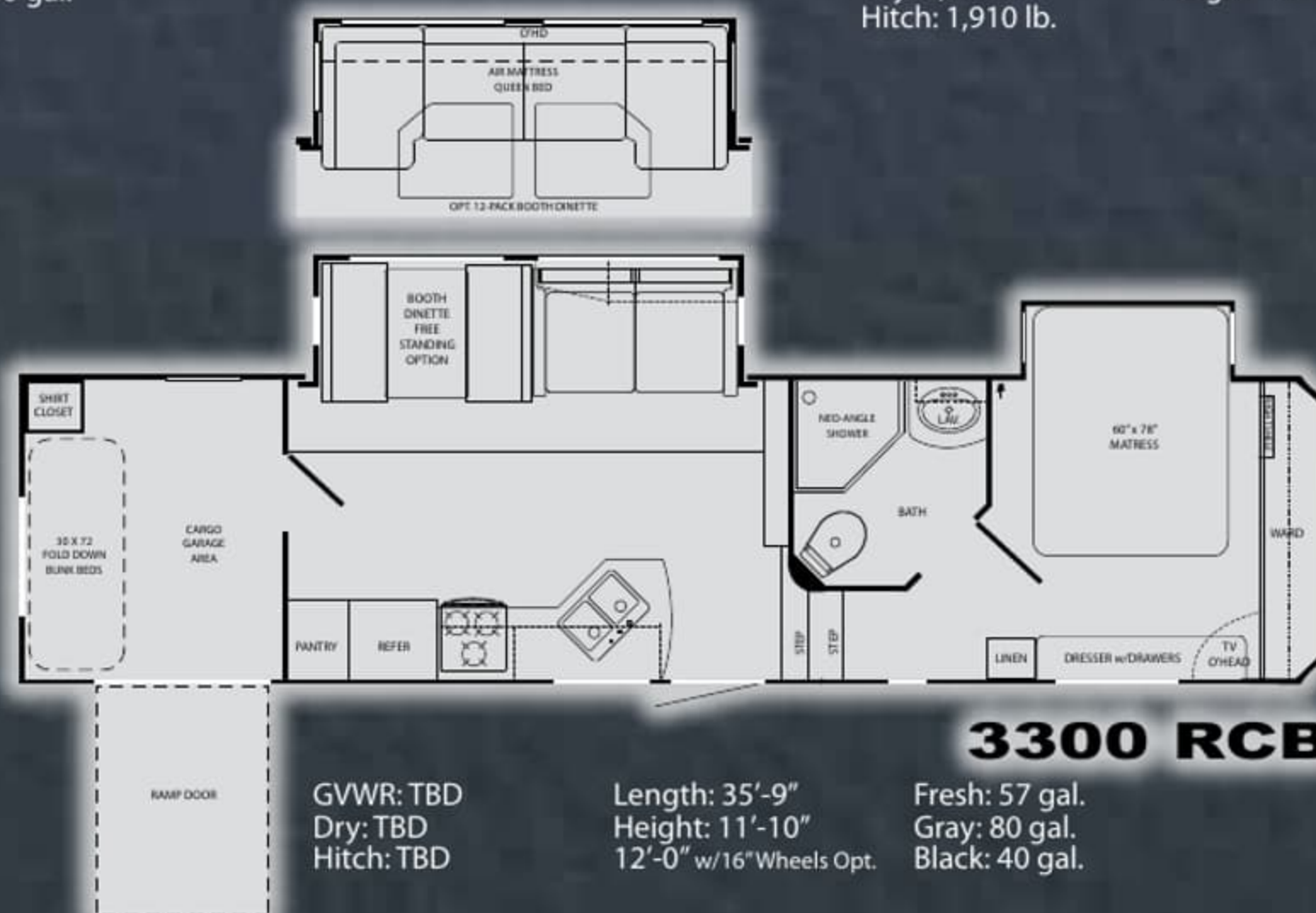


**FULL-PROFILE 3300RLB**

GVWR: 13,900 lb.  
Dry: 9,850 lb.  
Hitch: 1,910 lb.

Length: 35'-9"  
Height: 12'-7"

Fresh: 57 gal.  
Gray: 80 gal.  
Black: 40 gal.



**3300 RCB**

GVWR: TBD  
Dry: TBD  
Hitch: TBD

Length: 35'-9"  
Height: 11'-10"  
12'-0" w/16" Wheels Opt.

Fresh: 57 gal.  
Gray: 80 gal.  
Black: 40 gal.



# XLT

## ULTRA - LITE



### THE PERFECT CHOICE FOR 1/2 TON TRUCK OWNERS!

The XLT ultra lightweight line of towables is quite possibly the strongest built lightweight series ever to hit the market! Featuring all-aluminum, fully laminated construction - including a laminated roof - the XLT is built to stand the test of time. The XLT also features Heartland's Patented Improved Turning Radius that allows you to turn up to 88-degrees in most short bed, extended cab trucks!



The combination range/oven offers three high-output burners on top with a convection microwave oven below which allows for increased storage space above!

# XLT ULTRA - LITE

## THE PERFECT CHOICE FOR 1/2 TON TRUCK OWNERS!

The XLT ultra lightweight line of towables is quite possibly the strongest built lightweight series ever to hit the market! Featuring all-aluminum, fully laminated construction - including a laminated roof - the XLT is built to stand the test of time. The XLT also features Heartland's Patented Improved Turning Radius that allows you to turn up to 88-degrees in most short bed, extended cab trucks!



The combination range/oven offers three high-output burners on top with a convection microwave oven below which allows for increased storage space above!

# XLT - ULTRA LIGHT FIFTH WHEELS & TRAVEL TRAILERS

## *BEAUTIFUL INTERIORS!*

The XLT features luxurious furnishings, Amish-crafted hardwood doors and drawers, oil-rubbed bronze hardware, decorative glass inserts in the overheads and multiple slide-out floorplans.



## *ROOMY BEDROOMS WITH LOTS OF STORAGE*

The XLT bedroom features a large queen bed with underbed storage, as well as his and hers wardrobes, a built-in shelf for alarm clocks, chargers, and other miscellaneous items, and dual windows for improved ventilation. The speakers in the ceiling of the bedroom allow you to enjoy the stereo while relaxing.

Not pictured here  
The bath area of the XLT features a nice-sized lav base, mirrored medicine cabinet and large neo-angle shower with skylight. A large linen closet in the bath area features a TV shelf with cable hook-ups, while the private commode room features an overhead shelf, mirror and power vent.



# XLT - ULTRA LIGHT FIFTH WHEELS & TRAVEL TRAILERS

## *BEAUTIFUL INTERIORS!*

The XLT features luxurious furnishings, Amish-crafted hardwood doors and drawers, oil-rubbed bronze hardware, decorative glass inserts in the overheads and multiple slide-out floorplans.



## *ROOMY BEDROOMS WITH LOTS OF STORAGE*

The XLT bedroom features a large queen bed with underbed storage, as well as his and hers wardrobes, a built-in shelf for alarm clocks, chargers, and other miscellaneous items, and dual windows for improved ventilation. The speakers in the ceiling of the bedroom allow you to enjoy the stereo while relaxing.

Not pictured here  
The bath area of the XLT features a nice-sized lav base, mirrored medicine cabinet and large neo-angle shower with skylight. A large linen closet in the bath area features a TV shelf with cable hook-ups, while the private commode room features an overhead shelf, mirror and power vent.



# XLT, YOUR LAMINATED WORLD... *Strength,*

## A TRUE TEST!



**OVER 3,700 Pounds!**

Plant Manager Steve Johnson was so confident in the superior design and strength of the XLT roof construction that he offered to have his personal truck lifted up and set on the coach to test it! There is no "photoshop" work on these photos - the truck was set on the roof of the coach with no extra support and it passed the test with flying colors!

NOTE: Heartland does not recommend, nor condone the setting of automobiles or trucks on the roofs of our recreational vehicles. This test was performed solely for advertising purposes to show the incredible strength of our laminated roof.

## LAMINATED FLOOR SYSTEM



XLT's LAMINATED Floor System is one of the **STRONGEST FLOORS** in the industry! Featuring sturdy 2.5" Aluminum Framing; thick Block Foam Insulation; One-Piece Seamless Decking and a Thermo-Board Luan on the bottom. All of this is Laminated together for Maximum Strength and Insulation R Value - virtually eliminating flex in the floor!

Heartland builds recreational vehicles with as many residential features and construction methods as possible and we are excited to introduce this 3" Laminated Floor System in our top three lines of fifth wheels.

Choose Heartland for Maximum Strength; Maximum Insulation Value; and Minimal Flex!!



HEARTLAND'S 3"  
LAMINATED FLOOR

XLT's LAMINATED Floor Construction easily supported over 1,800 lbs. of Water Jugs in one spot - resulting in less than 1/4" of flex!!



## LAMINATED WALL SYSTEM

# XLT, YOUR LAMINATED WORLD... *Strength,*

## A TRUE TEST!



**OVER 3,700 Pounds!**

Plant Manager Steve Johnson was so confident in the superior design and strength of the XLT roof construction that he offered to have his personal truck lifted up and set on the coach to test it! There is no "photoshop" work on these photos - the truck was set on the roof of the coach with no extra support and it passed the test with flying colors!

NOTE: Heartland does not recommend, nor condone the setting of automobiles or trucks on the roofs of our recreational vehicles. This test was performed solely for advertising purposes to show the incredible strength of our laminated roof.

## LAMINATED FLOOR SYSTEM



XLT's LAMINATED Floor System is one of the **STRONGEST FLOORS** in the industry! Featuring sturdy 2.5" Aluminum Framing; thick Block Foam Insulation; One-Piece Seamless Decking and a Thermo-Board Luan on the bottom. All of this is Laminated together for Maximum Strength and Insulation R Value - virtually eliminating flex in the floor!



XLT's LAMINATED Floor Construction easily supported over 1,800 lbs. of Water Jugs in one spot - resulting in less than 1/4" of flex!!

Heartland builds recreational vehicles with as many residential features and construction methods as possible and we are excited to introduce this 3" Laminated Floor System in our top three lines of fifth wheels.

Choose Heartland for Maximum Strength; Maximum Insulation Value; and Minimal Flex!!

HEARTLAND's 3"  
LAMINATED FLOOR



## LAMINATED WALL SYSTEM

# Durability & Comfort BEYOND COMPARE!

The combination of these three systems bring you the Strongest and Lightest construction available while also providing unparalleled noise reduction, thermal insulation and durability. Protecting your investment is important to HEARTLAND. Laminated construction provides that protection in addition to offering peace of mind that you will be spending more time enjoying your family and travels than worrying about repairing your RV.

## LAMINATED ROOF SYSTEM



*Strength, Durability & Comfort BEYOND COMPARE!*

**SOUND BARRIER**



**THERMAL EFFICIENT**



**SUPER STRENGTH**



# Durability & Comfort BEYOND COMPARE!

The combination of these three systems bring you the Strongest and Lightest construction available while also providing unparalleled noise reduction, thermal insulation and durability. Protecting your investment is important to HEARTLAND. Laminated construction provides that protection in addition to offering peace of mind that you will be spending more time enjoying your family and travels than worrying about repairing your RV.

## LAMINATED ROOF SYSTEM



**2" THICK SIDEWALLS!**

Double Welded, Fully Laminated Sidewall Construction

Lightweight ALUMINUM

Just an 1/8" thick foam cup protects your hand from scalding hot coffee... imagine what nearly 2" of block foam does for your Laminated Heartland Sidewall!



**BEST-IN-CLASS**

- INSULATION - R VALUE
- NOISE REDUCTION
- DURABILITY
- STRENGTH
- LOOKS

- RUBBER SKIN
- WOOD DECKING
- BLOCK FOAM INSULATION
- ALUMINUM RIBS & PERIMETER
- DECORATIVE, TEXTURED CEILING VINYL

**3 INCHES - FIVE LAYERS**

**3"**

**Strength, Durability & Comfort BEYOND COMPARE!**

SOUND BARRIER	THERMAL EFFICIENT	SUPER STRENGTH
 	 	 

# XL ULTRA - LITE

## LIGHT IN WEIGHT, TONS OF BENEFITS



The ALL ALUMINUM CONSTRUCTION translates into both a lighter weight unit and stronger, unified construction versus the traditional wood-construction!



The CROWNED LAMINATED ROOF is unique in the ultra lightweight towable marketplace - promoting snow, water and debris run-off!



LARGER PASS THROUGH STORAGE allows XLT owners to store larger items such as this full-size cooler!



### UNIVERSAL DOCKING CENTER

The XLT UDC brings all of the unit systems hook-ups to a single, concealed exterior compartment!



Free-standing dinette table can be brought outdoors when desired

### INCREDIBLE TOWING AND BALANCE!



XLT Travel Trailers Only



Heartland's optional ToyLok is perfect for quickly and easily securing bikes, grills, furniture and anything else that needs to be secured when you leave your site unattended.



# XLT

## ULTRA - LITE

## LIGHT IN WEIGHT, TONS OF BENEFITS



The ALL ALUMINUM CONSTRUCTION translates into both a lighter weight unit and stronger, unified construction versus the traditional wood-construction!



The CROWNED LAMINATED ROOF is unique in the ultra lightweight towable marketplace - promoting snow, water and debris run-off!



LARGER PASS THROUGH STORAGE allows XLT owners to store larger items such as this full-size cooler!



### UNIVERSAL DOCKING CENTER

The XLT UDC brings all of the unit systems hook-ups to a single, concealed exterior compartment!



Free-standing dinette table can be brought outdoors when desired

### INCREDIBLE TOWING AND BALANCE!



XLT Travel Trailers Only



Heartland's optional ToyLok is perfect for quickly and easily securing bikes, grills, furniture and anything else that needs to be secured when you leave your site unattended.





# ULTRA LIGHT WEIGHT TRAVEL TRAILERS & FIFTH WHEELS

## INTERIOR

Radius Counter Tops  
Smoke Detector  
LP Detector  
Fire Extinguisher  
**8 ft. Wide-Body Design**  
78" Interior Height  
Monitor Panel  
Cable TV  
**Ducted 13.5 A/C**  
12V, AM/FM CD Player  
**Raised Panel Overhead Cabinets Doors**  
TV Antenna w/Booster

## KITCHEN

**Steel Ball-Bearing Drawer Guides -Full Extension**  
Hi-Rise Kitchen Faucet  
Convection Oven (below countertop for extra storage)  
**9,000 BTU 3-Burner Cooktop**  
**(All 3 Burners High Output!)**  
Residential Quality Linoleum Flooring  
Power Range Hood w/Light  
Double Door Refer  
Radiused Kitchen Counter Tops  
**Acrylic Sink with Cover**

## BATH AREA

Shower Skylight  
**Tub Surround with Built-in Shelves**  
Hardwood Medicine Cabinet  
Power Vent in Bathroom  
**Porcelain Foot Flush Toilet (5th Wheels)**

## BEDROOM

**Queen Bed**  
Bedroom Night Stands (travel trailers)  
Reading Lights  
120V Outlets on Both Night Stands (travel trailers)

## EXTERIOR

**1-Piece ABS Underbelly**  
E-Z Lube Hubs  
4 Stab Jacks (2 on 5th Wheels)  
15" Tires (TT & 5th Wheels)  
Outside Speakers  
Outside Shower  
Patio Awning  
Spare Tire (option on 5th Wheels)  
Exterior 120V Outlet  
Large Assist Entry Handle  
One Piece Rubber Roofing Material

## FEATURES

25,000 BTU Furnace (245RL & 265RK only)  
35,000 BTU Furnace (most models)  
**The FIRST UDC (Universal Docking Center) in a**  
**Lightweight, Mid-Pro 5th Wheel! (5th wheels only)**  
6 Gal Gas/Electric DSI Water Heater  
**Heated and Enclosed Underbelly**  
Electric Slide Outs  
**Black Tank Flush System**  
Texas Style Storage Doors  
**XLT KITCHEN PACKAGE:**  
- Upgraded Oil Rubbed Bronze Hardware  
- Upgraded Decorative Glass Inserts  
- Removable Dinette Table (inside/outside)  
(TT & 245RL 5th Wheel Only)  
- Large Viewing Window in Kitchen (trailers)  
- Full Extension Ball Bearing Drawer Guides  
- Deep Pantry with Removable Shelves

## OPTIONS

Fiberglass Front Cap (5th Wheels)  
Hitch Cover (5th Wheels)  
RVQ Grill (Travel Trailers)  
Aluminum Wheels  
15K A/C  
19" LCD TV (5th Wheels) - 15" LCD TV (Travel Trailers)  
Two Chairs IPO Sofa (some models)  
Freestanding Dinette Table & Chairs  
Spare Tire (5th Wheels)  
Hide-A-Bed Air Mattress (5th Wheels) (TT Standard)  
Queen Pillow Top Mattress Option (Travel Trailers)  
Retractable Toy Lock

## \* LITE-WEIGHT STRENGTH PKG. (includes):

**Strong Laminated Crowned Roof**  
**Block Foam Brick Insulation**  
**Aluminum Construction**  
(front, back and side walls, floor, roof)  
**Enclosed and Heated Underbelly**  
Triple Entry Step (Triple on 5th Wheels)  
Tinted Safety Glass Windows  
**2" Thick (R-7) Sidewall Construction**  
**Roof & Floor (R-14) Insulation**  
4 Stabilizer Jacks with Sand Pads  
**WIDE-TRAX Stability Control Axles (Trailers)**  
HD Leaf Spring Suspension  
Two 20 lb. Dual LP Tanks (Travel Trailers)  
Two 30 lb. Dual LP Tanks (5th Wheels)



Heartland Recreational Vehicles  
1001 All-Pro Drive  
Elkhart, IN 46514

Product information is as accurate as possible as of the date of publication of this brochure. Due to Heartland's commitment to continuous product improvement - floorplans, materials, components, features, specifications, options, etc. are subject to change without notice or obligation to Heartland Recreational Vehicles. XLT specifications apply to coaches beginning with serial number 204194.

**Tow Vehicle Caution:** Owners of Heartland recreational vehicles are solely responsible for the selection and proper use of tow vehicles. All customers should consult with a motor vehicle manufacturer or their dealer concerning the purchase and use of suitable tow vehicles for Heartland products. Heartland disclaims any liability or damages suffered as a result of the selection, operation, use or misuse of a tow vehicle. Heartland's limited warranty does not cover damage to the recreational vehicle or the tow vehicle as a result of the selection of the tow vehicle.

See your nearest Heartland dealer to review a current model.

## INTERIOR

Radius Counter Tops  
Smoke Detector  
LP Detector  
Fire Extinguisher  
**8 ft. Wide-Body Design**  
78" Interior Height  
Monitor Panel  
Cable TV  
**Ducted 13.5 A/C**  
12V, AM/FM CD Player  
**Raised Panel Overhead Cabinets Doors**  
TV Antenna w/Booster

## KITCHEN

**Steel Ball-Bearing Drawer Guides -Full Extension**  
Hi-Rise Kitchen Faucet  
Convection Oven (below countertop for extra storage)  
**9,000 BTU 3-Burner Cooktop**  
**(All 3 Burners High Output!)**  
Residential Quality Linoleum Flooring  
Power Range Hood w/Light  
Double Door Refer  
Radiused Kitchen Counter Tops  
**Acrylic Sink with Cover**

## BATH AREA

Shower Skylight  
**Tub Surround with Built-in Shelves**  
Hardwood Medicine Cabinet  
Power Vent in Bathroom  
**Porcelain Foot Flush Toilet** (5th Wheels)

## BEDROOM

**Queen Bed**  
Bedroom Night Stands (travel trailers)  
Reading Lights  
120V Outlets on Both Night Stands (travel trailers)



# ULTRA LIGHT WEIGHT TRAVEL TRAILERS & FIFTH WHEELS

## EXTERIOR

**1-Piece ABS Underbelly**  
E-Z Lube Hubs  
4 Stab Jacks (2 on 5th Wheels)  
15" Tires (TT & 5th Wheels)  
Outside Speakers  
Outside Shower  
Patio Awning  
Spare Tire (option on 5th Wheels)  
Exterior 120V Outlet  
Large Assist Entry Handle  
One Piece Rubber Roofing Material

## FEATURES

25,000 BTU Furnace (245RL & 265RK only)  
35,000 BTU Furnace (most models)  
**The FIRST UDC (Universal Docking Center) in a**  
**Lightweight, Mid-Pro 5th Wheel!** (5th wheels only)  
6 Gal Gas/Electric DSI Water Heater  
**Heated and Enclosed Underbelly**  
Electric Slide Outs  
**Black Tank Flush System**  
Texas Style Storage Doors

## **XLT KITCHEN PACKAGE:**

- Upgraded Oil Rubbed Bronze Hardware
- Upgraded Decorative Glass Inserts
- Removable Dinette Table (inside/outside)  
(TT & 245RL 5th Wheel Only)
- Large Viewing Window in Kitchen (trailers)
- Full Extension Ball Bearing Drawer Guides
- Deep Pantry with Removable Shelves

## OPTIONS

Fiberglass Front Cap (5th Wheels)  
Hitch Cover (5th Wheels)  
RVQ Grill (Travel Trailers)  
Aluminum Wheels  
15K A/C  
19" LCD TV (5th Wheels) - 15" LCD TV (Travel Trailers)  
Two Chairs IPO Sofa (some models)  
Freestanding Dinette Table & Chairs  
Spare Tire (5th Wheels)  
Hide-A-Bed Air Mattress (5th Wheels) (TT Standard)  
Queen Pillow Top Mattress Option (Travel Trailers)  
Retractable Toy Lock

## **\* LITE-WEIGHT STRENGTH PKG. (includes):**

**Strong Laminated Crowned Roof**  
**Block Foam Brick Insulation**  
**Aluminum Construction**  
(front, back and side walls, floor, roof)  
**Enclosed and Heated Underbelly**  
Triple Entry Step (Triple on 5th Wheels)  
Tinted Safety Glass Windows  
**2" Thick (R-7) Sidewall Construction**  
**Roof & Floor (R-14) Insulation**  
4 Stabilizer Jacks with Sand Pads  
**WIDE-TRAX Stability Control Axles** (Trailers)  
HD Leaf Spring Suspension  
Two 20 lb. Dual LP Tanks (Travel Trailers)  
Two 30 lb. Dual LP Tanks (5th Wheels)



Heartland Recreational Vehicles  
1001 All-Pro Drive  
Elkhart, IN 46514

Product information is as accurate as possible as of the date of publication of this brochure. Due to Heartland's commitment to continuous product improvement - floorplans, materials, components, features, specifications, options, etc. are subject to change without notice or obligation to Heartland Recreational Vehicles. XLT specifications apply to coaches beginning with serial number 204194.

**Tow Vehicle Caution:** Owners of Heartland recreational vehicles are solely responsible for the selection and proper use of tow vehicles. All customers should consult with a motor vehicle manufacturer or their dealer concerning the purchase and use of suitable tow vehicles for Heartland products. Heartland disclaims any liability or damages suffered as a result of the selection, operation, use or misuse of a tow vehicle. Heartland's limited warranty does not cover damage to the recreational vehicle or the tow vehicle as a result of the selection of the tow vehicle.

See your nearest Heartland dealer to review a current model.

# LT ULTRA-LITE



## FIFTH WHEEL FLOORPLANS MOST

6,610 lb



245RL

GVWR: 11,295 lb.  
Dry: 6,610 lb.  
Hitch: 1,135 lb.  
Length: 26'-4"  
Width: 8'-0"  
Height: 11'-10"  
Fresh: 53 gal.  
Gray: 40 gal.  
Black: 40 gal.

7,180 lb



287RL

GVWR: 11,600 lb.  
Dry: 7,180 lb.  
Hitch: 1,440 lb.  
Length: 30'-5"  
Width: 8'-0"  
Height: 11'-10"  
Fresh: 53 gal.  
Gray: 80 gal.  
Black: 40 gal.

7,120 lb



297RE

GVWR: 11,360 lb.  
Dry: 7,120 lb.  
Hitch: 1,200 lb.  
Length: 30'-5"  
Width: 8'-0"  
Height: 11'-10"  
Fresh: 53 gal.  
Gray: 40 gal.  
Black: 40 gal.

## TRAVEL TRAILER FLOORPLANS



6,818 lb



320BS

GVWR: 8,600 lb.  
Dry: 6,818 lb.  
Hitch: 712 lb.  
Length: 33'-11"  
Width: 8'-0"  
Height: 10'-10"  
Fresh: 42 gal.  
Gray: 37 gal.  
Black: 37 gal.

# LT ULTRA - LITE



## FIFTH WHEEL FLOORPLANS MOST

6,610 lb



GVWR: 11,295 lb.  
Dry: 6,610 lb.  
Hitch: 1,135 lb.  
Length: 26'-4"  
Width: 8'-0"  
Height: 11'-10"  
Fresh: 53 gal.  
Gray: 40 gal.  
Black: 40 gal.

245RL

7,180 lb



GVWR: 11,600 lb.  
Dry: 7,180 lb.  
Hitch: 1,440 lb.  
Length: 30'-5"  
Width: 8'-0"  
Height: 11'-10"  
Fresh: 53 gal.  
Gray: 80 gal.  
Black: 40 gal.

287RL

7,120 lb



GVWR: 11,360 lb.  
Dry: 7,120 lb.  
Hitch: 1,200 lb.  
Length: 30'-5"  
Width: 8'-0"  
Height: 11'-10"  
Fresh: 53 gal.  
Gray: 40 gal.  
Black: 40 gal.

297RE

## TRAVEL TRAILER FLOORPLANS



6,818 lb



GVWR: 8,600 lb.  
Dry: 6,818 lb.  
Hitch: 712 lb.  
Length: 33'-11"  
Width: 8'-0"  
Height: 10'-10"  
Fresh: 42 gal.  
Gray: 37 gal.  
Black: 37 gal.

320BS

# ARE ½ TON TOWABLE!



GVWR: 11,430 lb.  
Dry: 6,792 lb.  
Hitch: 1,270 lb.  
Length: 28'-5"  
Width: 8'-0"  
Height: 11'-10"  
Fresh: 53 gal  
Gray: 80 gal.  
Black: 40 gal.



GVWR: 11,580 lb.  
Dry: 7,120 lb.  
Hitch: 1,420 lb.  
Length: 30'-5"  
Width: 8'-0"  
Height: 11'-10"  
Fresh: 53 gal.  
Gray: 80 gal.  
Black: 40 gal.



GVWR: TBD  
Dry: TBD  
Hitch: TBD  
Length: 32'-3"  
Width: 8'-0"  
Height: 11'-10"  
Fresh: 53 gal  
Gray: 80 gal.  
Black: 40 gal.



GVWR: 11,660 lb.  
Dry: 8,360 lb.  
Hitch: 1,500 lb.  
Length: 34'-0"  
Width: 8'-0"  
Height: 11'-10"  
Fresh: 53 gal  
Gray: 80 gal.  
Black: 40 gal.

The SUNDANCE XLT Travel Trailer is one of the Strongest Light Weights on the Market!

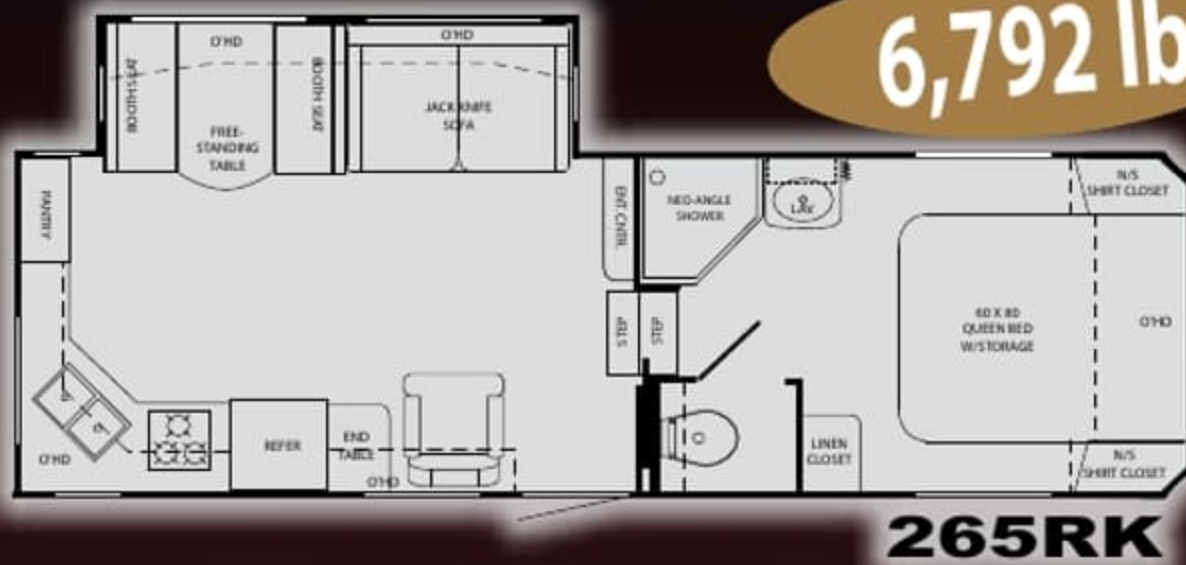


GVWR: 8,600 lb.  
Dry: 6,612 lb.  
Hitch: 786 lb.  
Length: 33'-11"  
Width: 8'-0"  
Height: 10'-10"  
Fresh: 42 gal.  
Gray: 37 gal.  
Black: 37 gal.



GVWR: 8,600 lb.  
Dry: 6,740 lb.  
Hitch: TBD  
Length: 34'-11"  
Width: 8'-0"  
Height: 10'-10"  
Fresh: 42 gal.  
Gray: 37 gal.  
Black: 37 gal.

# ARE ½ TON TOWABLE!



GVWR: 11,430 lb.  
Dry: 6,792 lb.  
Hitch: 1,270 lb.

Length: 28'-5"  
Width: 8'-0"  
Height: 11'-10"

Fresh: 53 gal  
Gray: 80 gal.  
Black: 40 gal.



GVWR: 11,580 lb.  
Dry: 7,120 lb.  
Hitch: 1,420 lb.

Length: 30'-5"  
Width: 8'-0"  
Height: 11'-10"

Fresh: 53 gal.  
Gray: 80 gal.  
Black: 40 gal.



GVWR: TBD  
Dry: TBD  
Hitch: TBD

Length: 32'-3"  
Width: 8'-0"  
Height: 11'-10"

Fresh: 53 gal  
Gray: 80 gal.  
Black: 40 gal.

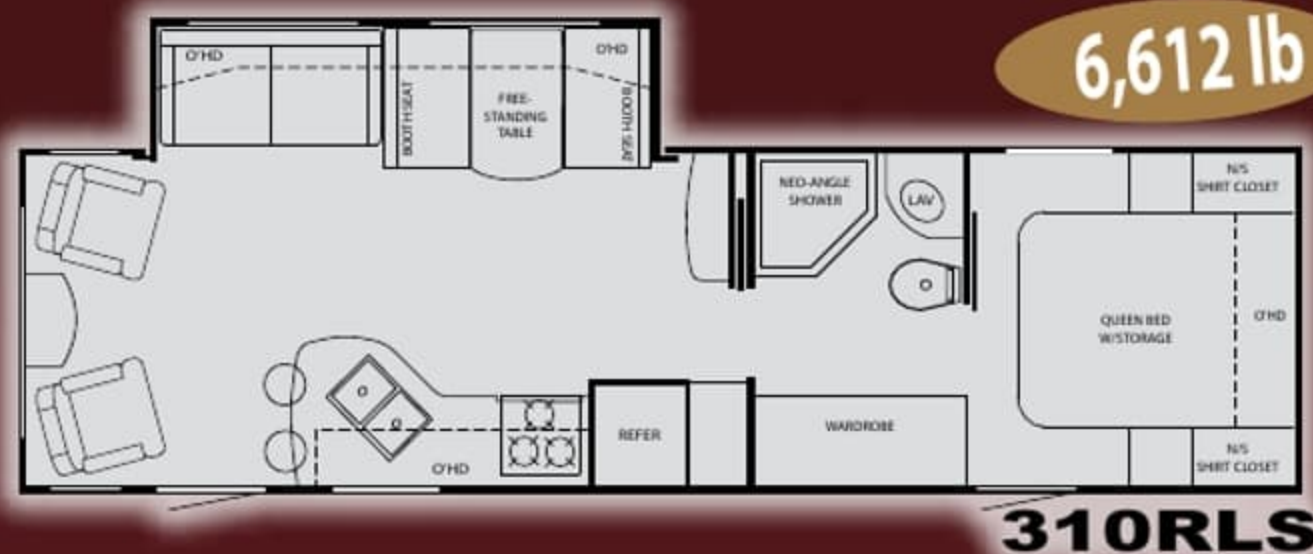


GVWR: 11,660 lb.  
Dry: 8,360 lb.  
Hitch: 1,500 lb

Length: 34'-0"  
Width: 8'-0"  
Height: 11'-10"

Fresh: 53 gal  
Gray: 80 gal.  
Black: 40 gal.

The SUNDANCE XLT Travel Trailer is one of the Strongest Light Weights on the Market!



GVWR: 8,600 lb.  
Dry: 6,612 lb.  
Hitch: 786 lb.

Length: 33'-11"  
Width: 8'-0"  
Height: 10'-10"

Fresh: 42 gal.  
Gray: 37 gal.  
Black: 37 gal.



GVWR: 8,600 lb.  
Dry: 6,740 lb.  
Hitch: TBD

Length: 34'-11"  
Width: 8'-0"  
Height: 10'-10"

Fresh: 42 gal.  
Gray: 37 gal.  
Black: 37 gal.



Heartland Recreational Vehicles  
1001 All-Pro Drive • Elkhart, IN 46514 • 574-262-5992

## Community. Convenience. Close-to-home.

Where you purchase your recreational vehicle is ultimately your decision but Heartland urges you to consider buying at your local dealer. Dealers are part of your community, providing jobs and contributing to your local economy. These dealers are under obligation to provide warranty service for products they sell, but are not legally required to service products purchased from other dealers. At some point, you may need to return to the dealer you buy from - why not stay close to home? After all, home is where your Heartland is!

## BENEFITS OF PURCHASING YOUR RV LOCALLY:

- You enjoy valuable relationship building with Dealer Representatives, close to your home, who will explain the features and benefits of the product.
- You receive a full product orientation prior to delivery, which includes hands-on directions for many of the coach's systems and functions. You are also introduced to the Dealership's Service/Parts/Warranty personnel who are at the ready to help you with any issues you may encounter, now and in the future.
- You enjoy customer PRIORITY. Dealerships generally service their purchasing customers first - others may experience long delays and miss opportunities to use their RV. What is it worth for you to have a dealership's full attention and motivation to satisfy you when you need service - in a timely manner?
- Valuable TAX dollars and jobs stay in YOUR community which pays for your roads, schools, police and fire departments.

## DON'T UNDERESTIMATE CUSTOMER SERVICE AND PERSONAL CARE!

For Canadian Residents: If you purchase an RV out-of-country, there are additional fees, taxes and inspections that must be met before bringing your product home. Your local Canadian dealers are experts in these provisions.

Your Authorized Heartland Dealer:



[www.HEARTLANDRVs.com](http://www.HEARTLANDRVs.com)

## Experience:

Product Walk-Through Videos  
Side By Side Comparisons  
Feature Videos • Photo Galleries  
Virtual 360° Tours  
Detailed Floor Plans  
News • Testimonials  
Customer Service  
Service Locator  
Owners Club • More  
at our Informative Web Site



**Vendor 800#**  
CALL DIRECT FOR DIRECT RESULTS!  
TOLL FREE & WARRANTY PHONE NUMBERS:

LIPPERT	1.800.524.7821
DOMESTIC	1.800.544.4881
DOMESTIC	1.800.547.2232
SHURFLOW	1.800.694.3218
THEYFORD	1.800.543.1219
KOL	1.800.290.7091
THEYFORD	1.800.527.2828
A.S.A.	1.800.688.3135
PROGRESSIVE	1.268.781.4241
CHENG	1.877.294.8897
ATWOOD	1.800.888.3118
SUBURBAN	1.423.776.2131
SEAN	1.800.228.7926
R & R	1.574.259.7838

## Call Direct, Fast Results! 800# LABEL IN EVERY HEARTLAND

We provide a convenient sticker in each coach listing the warranty phone numbers of our most common vendor partners so that if you choose to, you may work directly with them to more quickly resolve issues or obtain replacement items.



## HEARTLAND CUSTOMER SERVICE WE'VE GOT YOUR BACK!

Over 40 men and women located in a dedicated facility servicing our customers every day. With a dealer network of over 400 locations across the U.S. and Canada, you're never far from an authorized Heartland dealer.

Product information is as accurate as possible as of the date of publication of this brochure. Due to Heartland's commitment to continuous product improvement - floorplans, materials, components, features, specifications, options, etc. are subject to change without notice or obligation to Heartland Recreational Vehicles.

**Tow Vehicle Caution:** Owners of Heartland recreational vehicles are solely responsible for the selection and proper use of tow vehicles. All customers should consult with a motor vehicle manufacturer or their dealer concerning the purchase and use of suitable tow vehicles for Heartland products. Heartland disclaims any liability or damages suffered as a result of the selection, operation, use or misuse of a tow vehicle. Heartland's limited warranty does not cover damage to the recreational vehicle or the tow vehicle as a result of the selection of the tow vehicle.

See your nearest Heartland dealer to review a current model. 80,000 LITHO 2/09



Heartland Recreational Vehicles  
1001 All-Pro Drive • Elkhart, IN 46514 • 574-262-5992

## Community. Convenience. Close-to-home.

Where you purchase your recreational vehicle is ultimately your decision but Heartland urges you to consider buying at your local dealer. Dealers are part of your community, providing jobs and contributing to your local economy. These dealers are under obligation to provide warranty service for products they sell, but are not legally required to service products purchased from other dealers. At some point, you may need to return to the dealer you buy from - why not stay close to home? After all, home is where your Heartland is!

## BENEFITS OF PURCHASING YOUR RV LOCALLY:

- You enjoy valuable relationship building with Dealer Representatives, close to your home, who will explain the features and benefits of the product.
- You receive a full product orientation prior to delivery, which includes hands-on directions for many of the coach's systems and functions. You are also introduced to the Dealership's Service/Parts/Warranty personnel who are at the ready to help you with any issues you may encounter, now and in the future.
- You enjoy customer PRIORITY. Dealerships generally service their purchasing customers first - others may experience long delays and miss opportunities to use their RV. What is it worth for you to have a dealership's full attention and motivation to satisfy you when you need service - in a timely manner?
- Valuable TAX dollars and jobs stay in YOUR community which pays for your roads, schools, police and fire departments.

## DON'T UNDERESTIMATE CUSTOMER SERVICE AND PERSONAL CARE!

For Canadian Residents: If you purchase an RV out-of-country, there are additional fees, taxes and inspections that must be met before bringing your product home. Your local Canadian dealers are experts in these provisions.

Your Authorized Heartland Dealer:



[www.HEARTLANDRVS.com](http://www.HEARTLANDRVS.com)

## Experience:

Product Walk-Through Videos  
Side By Side Comparisons  
Feature Videos • Photo Galleries  
Virtual 360° Tours  
Detailed Floor Plans  
News • Testimonials  
Customer Service  
Service Locator  
Owners Club • More  
at our Informative Web Site



**VENDOR 800#**  
CALL DIRECT FOR DIRECT RESULTS!  
TOLL FREE & WARRANTY PHONE NUMBERS:

In an effort to offer the best possible customer service, we are providing you with the necessary phone numbers of our most common vendor partners so you may work directly with them to receive quick & timely service. Check this list and save on the product to determine the correct vendor.

LIPPERT	1.800.524.7821
DOMETIC	1.800.544.4881
Designers Air Conditioning, Heating, Electronics	1.800.347.2232
MORCO	1.800.354.3218
SHUR-LOW	1.800.542.1219
THE FORD	1.800.250.7051
KOB	1.800.537.2925
TRETT TIRE	1.800.688.3125
A.S.A.	1.269.781.4241
PROGRESSIVE	1.877.294.8997
CHENG	1.866.869.3118
ATWOOD	1.423.775.2131
SUBURBAN	1.800.228.7926
SWAN	1.574.259.7838

Heartland Recreational Vehicles, Inc. is not responsible for the accuracy of the information provided in this list. Please contact your local Heartland dealer for more information.

## Call Direct, Fast Results! 800# LABEL IN EVERY HEARTLAND

We provide a convenient sticker in each coach listing the warranty phone numbers of our most common vendor partners so that if you choose to, you may work directly with them to more quickly resolve issues or obtain replacement items.



## HEARTLAND CUSTOMER SERVICE WE'VE GOT YOUR BACK!

Over 40 men and women located in a dedicated facility servicing our customers every day. With a dealer network of over 400 locations across the U.S. and Canada, you're never far from an authorized Heartland dealer.

Product information is as accurate as possible as of the date of publication of this brochure. Due to Heartland's commitment to continuous product improvement - floorplans, materials, components, features, specifications, options, etc. are subject to change without notice or obligation to Heartland Recreational Vehicles.

**Tow Vehicle Caution:** Owners of Heartland recreational vehicles are solely responsible for the selection and proper use of tow vehicles. All customers should consult with a motor vehicle manufacturer or their dealer concerning the purchase and use of suitable tow vehicles for Heartland products. Heartland disclaims any liability or damages suffered as a result of the selection, operation, use or misuse of a tow vehicle. Heartland's limited warranty does not cover damage to the recreational vehicle or the tow vehicle as a result of the selection of the tow vehicle.

See your nearest Heartland dealer to review a current model. 80,000 LITHO 2/09