

 **DIPLOMAT**  
*2010*



"This is our time."



**MONACO**

DRIVING YOUR DREAM.







 **DIPLOMAT<sup>®</sup>**  
*2010*

*"This is our time."*



**MONACO<sup>®</sup>**

DRIVING YOUR DREAM.







MONACO

DRIVING YOUR DREAM

Raising kids. Working weekends. Walking the dog at 6 a.m. Haven't you earned some time just for you? You bet you have. And the 2010 Diplomat is your ticket to ride. Just imagine all the places you could go — Monument Valley, the Creole Nature Trail, Bryce Canyon, the Upper Peninsula... the possibilities are endless. Have you been trout fishing yet in Paradise Valley, Montana? Or walked the shores of Georgia's colonial coast? If not, you'd better get going. Because this is your time. And this is your coach.

## READY, SET, LIVE.

You've worked hard to get here. Now it's your turn to kick back and enjoy life — with a 2010 Diplomat. This magnificent coach has all the luxuries you deserve. Plush Ultraleather™ captain's chairs. A spectacular new 37-inch flatscreen LCD television (38PDQ, 42SKQ). Polished Corian® surfaces. Ceramic tile flooring with beautiful new accents. Even a bigger, better AC system for bonus summer cooling. Oh, and did we mention the optional high-definition cinema package? Now you're ready to start living.







MONACO®

DRIVING YOUR DREAM.

Raising kids. Working weekends. Walking the dog at 6 a.m. Haven't you earned some time just for you? You bet you have. And the 2010 Diplomat is your ticket to ride. Just imagine all the places you could go — Monument Valley, the Creole Nature Trail, Bryce Canyon, the Upper Peninsula... the possibilities are endless. Have you been trout fishing yet in Paradise Valley, Montana? Or walked the shores of Georgia's colonial coast? If not, you'd better get going. Because this is your time. And this is your coach.

## READY, SET, LIVE.

You've worked hard to get here. Now it's your turn to kick back and enjoy life — with a 2010 Diplomat. This magnificent coach has all the luxuries you deserve. Plush Ultraleather™ captain's chairs. A spectacular new 37-inch flatscreen LCD television (38PDQ, 42SKQ). Polished Corian® surfaces. Ceramic tile flooring with beautiful new accents. Even a bigger, better AC system for bonus summer cooling. Oh, and did we mention the optional high-definition cinema package? Now you're ready to start living.







### YOU'VE EARNED IT.

After a long day of fun, you deserve a good night's rest. Say hello to the Diplomat's master suite. Here you'll find a sumptuous queen-sized bed or optional king (42PAQ), a 26-inch LCD TV with remote (and optional DVD player), solid surface nightstands, and day/night pleated blackout shades. The 42PAQ also features a bath-and-a-half layout with beautiful ceramic tile flooring, two solid surface vanities with integrated sinks and a large, one-piece shower.







### YOU'VE EARNED IT.

After a long day of fun, you deserve a good night's rest. Say hello to the Diplomat's master suite. Here you'll find a sumptuous queen-sized bed or optional king (42PAQ), a 26-inch LCD TV with remote (and optional DVD player), solid surface nightstands, and day/night pleated blackout shades. The 42PAQ also features a bath-and-a-half layout with beautiful ceramic tile flooring, two solid surface vanities with integrated sinks and a large, one-piece shower.





COLORS AND PATTERNS IN PERFECT HARMONY.

Leave it to Monaco to give you the most enticing choices of exterior colors and interior décors. Choose the one that fits your style — from boldly sophisticated to classic elegance. Then, put it all together with our solid wood Newport Cherry II cabinetry, and you've created a masterpiece all your own.

NEWPORT CHERRY II



NOW FOR THE HARD PART.

Choosing the Diplomat was easy. Now, it's time to make it your own. For 2010, our designers are pleased to present a stunning array of standard and optional décors to match with our rich Newport Cherry II raised panel hardwood cabinetry. But don't worry. Even if you end up flipping a coin, you always win with Monaco.



LUNAR ECLIPSE

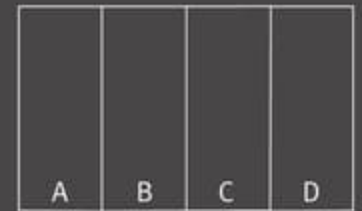


THOROUGHBRED II



ELECTRIC AVENUE

Carpet A  
Dinette B  
Sofa C  
Bedspread D



Note: Colors depicted are a reasonable representation though they may not be an exact match of the actual colors due to variances in processing and production. See your dealer for actual fabric and paint chip samples.



COLORS AND PATTERNS IN PERFECT HARMONY.

Leave it to Monaco to give you the most enticing choices of exterior colors and interior décors. Choose the one that fits your style — from boldly sophisticated to classic elegance. Then, put it all together with our solid wood Newport Cherry II cabinetry, and you've created a masterpiece all your own.

NEWPORT CHERRY II



NOW FOR THE HARD PART.

Choosing the Diplomat was easy. Now, it's time to make it your own. For 2010, our designers are pleased to present a stunning array of standard and optional décors to match with our rich Newport Cherry II raised panel hardwood cabinetry. But don't worry. Even if you end up flipping a coin, you always win with Monaco.



LUNAR ECLIPSE



THOROUGHbred II

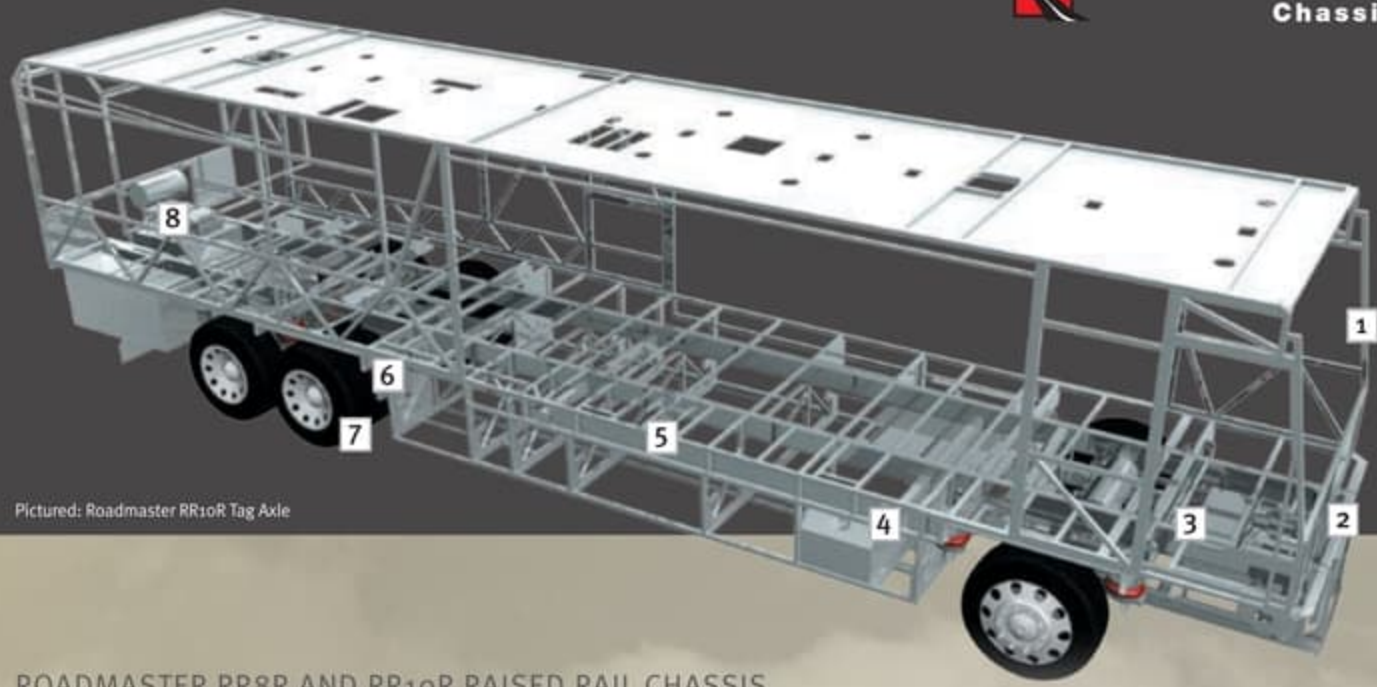


ELECTRIC AVENUE

Carpet	A			
Dinette	B			
Sofa	C			
Bedsread	D	A	B	C

Note: Colors depicted are a reasonable representation though they may not be an exact match of the actual colors due to variances in processing and production. See your dealer for actual fabric and paint chip samples.





Pictured: Roadmaster RR10R Tag Axle

THE DIFFERENCE IS IN THE DETAILS.

Take the wheel of a luxury motorhome, and you're taking the wheel of the chassis it rides on. That's why the Diplomat rides exclusively on a Roadmaster chassis that is custom built to deliver the very best diesel motorhome experience. Roadmaster's construction utilizes advanced design and engineering to distribute stress evenly throughout the entire chassis, reducing the possibility of twisting and increasing durability and reliability. The Cushion Air Glide suspension system features eight outboard-mounted air bags and eight shock absorbers on the 38PDQ, and ten air bags (eight outboard-mounted) and ten shock absorbers on the 42SKQ and 42PAQ tag axle models, and the system is supported by the largest ping tanks in the industry. It's the ultimate foundation for a luxury ride.

ROADMASTER RR8R AND RR10R RAISED RAIL CHASSIS

(Roadmaster RR8R: 38PDQ; Roadmaster RR10R Tag Axle: 42SKQ, 42PAQ)

- 1 A steel cage cockpit gives the Roadmaster chassis incomparable strength and safety in the front of the coach.
- 2 Every Roadmaster chassis features a steel firewall for added protection in the cockpit.
- 3 The main rails feature an exclusive raised rail design which provides for larger full pass-through storage bays with flush floors. Other highlights include a 3/8" thick frame rail — compared to the 1/4" of other manufacturers — and a stacked aluminum intercooler and radiator for optimum heat transfer and cooling.
- 4 Dual fuel fill allows you to fill the tank from either side of the coach, for greater convenience and flexibility at the pump.

- 5 The steel truss system is engineered as part of the chassis and provides outstanding strength and rigidity plus pass-through storage. In addition, the structure is pre-primed and coated with a rust-inhibiting paint.
- 6 Cushion Air Glide Suspension with eight outboard-mounted air bags and eight shock absorbers on the 38PDQ, and ten air bags (eight outboard-mounted) and ten shock absorbers on the 42SKQ and 42PAQ. Monitored leveling sensors continually adjust the air pressure at each axle to maintain a level ride and eliminate nosediving, weight transfer, and floating on curved roads. This system also stabilizes the coach on uneven surfaces.

- 7 Automatic Traction Control (ATC) eliminates wheel slippage in slick conditions and heightens control. The Anti-Lock Braking System (ABS) gives you superior stopping power, especially on steep grades. Together, these sophisticated systems offer the very best safety on the road.
- 8 Allison® 3000 MH 6-Speed World Transmission and electronic shifter. The three-point engine mounting system lowers the coach's center of gravity and reduces the amount of vibration that reaches the coach. The mounting also makes the engine easier to service. A 10,000 lb. tow hitch rating is the highest in its class.



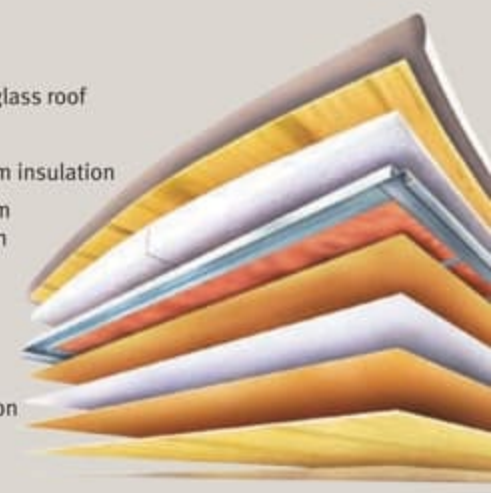
ROADMASTER RR10R Series TAG AXLE

The 42SKQ and 42PAQ models feature 10 air bags and a tag axle with anti-lock brakes. It's all part of Monaco's commitment to overall performance and, most importantly, your safety.

ROOF CONSTRUCTION

(top to bottom)

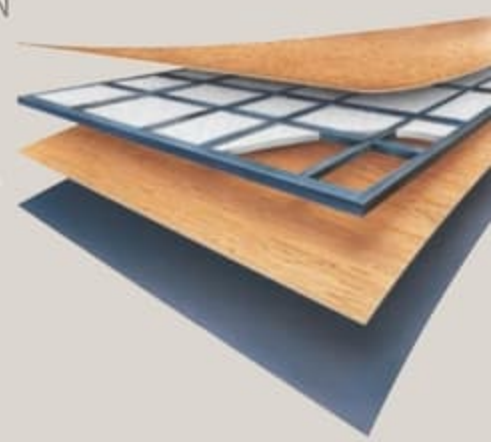
- One-piece peaked fiberglass roof
- Luaun backing
- Thick, tapered bead foam insulation
- Aluminum double I-beam superstructure filled with fiberglass insulation
- Vapor barrier
- Structure foam: thermal insulative barrier
- 1/2" bead foam insulation
- Foam padding for extra insulation
- Padded vinyl ceiling



FLOOR CONSTRUCTION

(top to bottom)

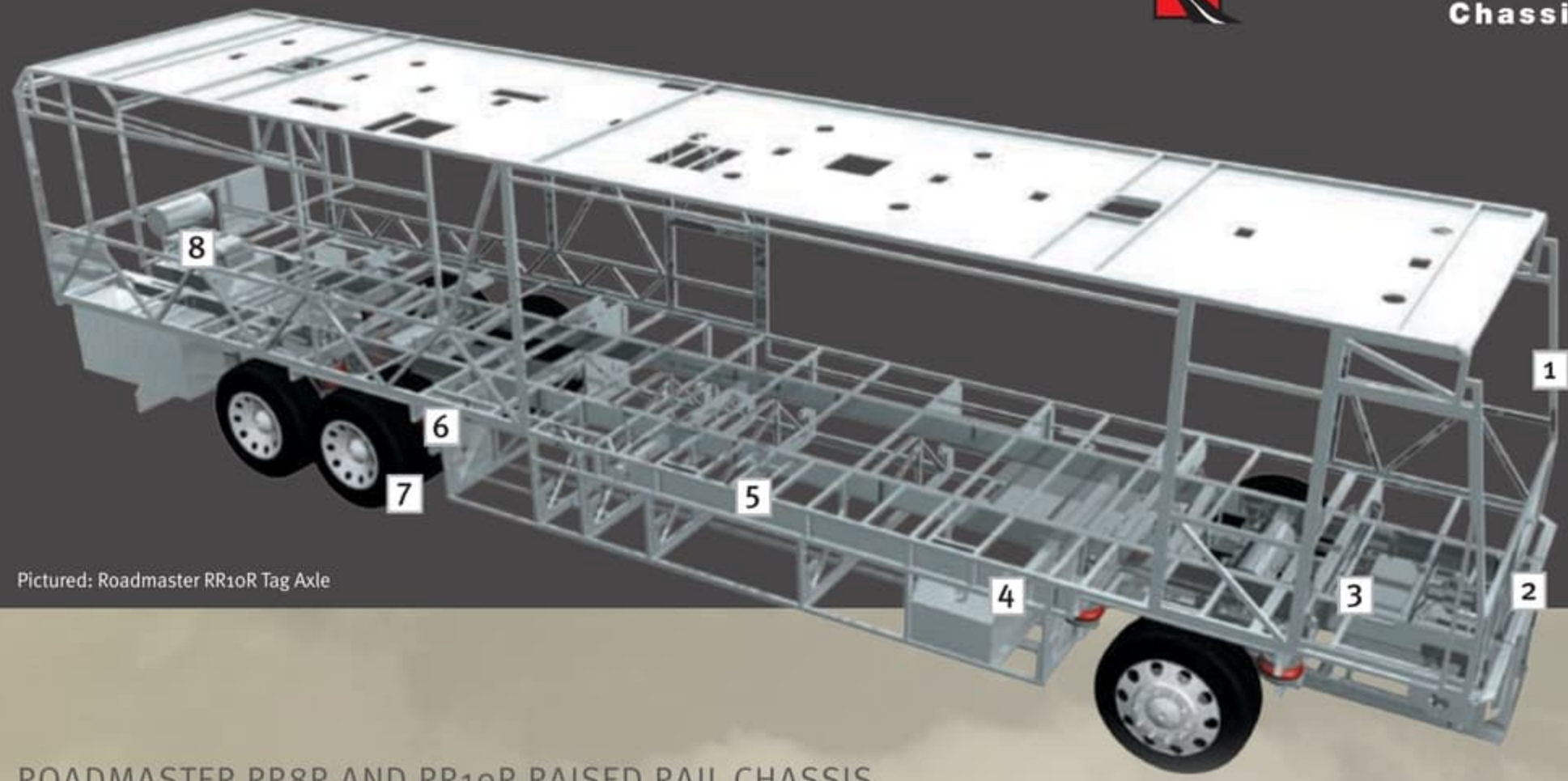
- Structurwood™
- 1-1/2" tube
- High-performance thermal insulation foam
- Luaun
- 3-ply backer



The Diplomat features a gutsy standard Cummins® ISL 425 diesel engine.







Pictured: Roadmaster RR10R Tag Axle

THE DIFFERENCE IS IN THE DETAILS.

Take the wheel of a luxury motorhome, and you're taking the wheel of the chassis it rides on. That's why the Diplomat rides exclusively on a Roadmaster chassis that is custom built to deliver the very best diesel motorhome experience. Roadmaster's construction utilizes advanced design and engineering to distribute stress evenly throughout the entire chassis, reducing the possibility of twisting and increasing durability and reliability. The Cushion Air Glide suspension system features eight outboard-mounted air bags and eight shock absorbers on the 38PDQ, and ten air bags (eight outboard-mounted) and ten shock absorbers on the 42SKQ and 42PAQ tag axle models, and the system is supported by the largest ping tanks in the industry. It's the ultimate foundation for a luxury ride.

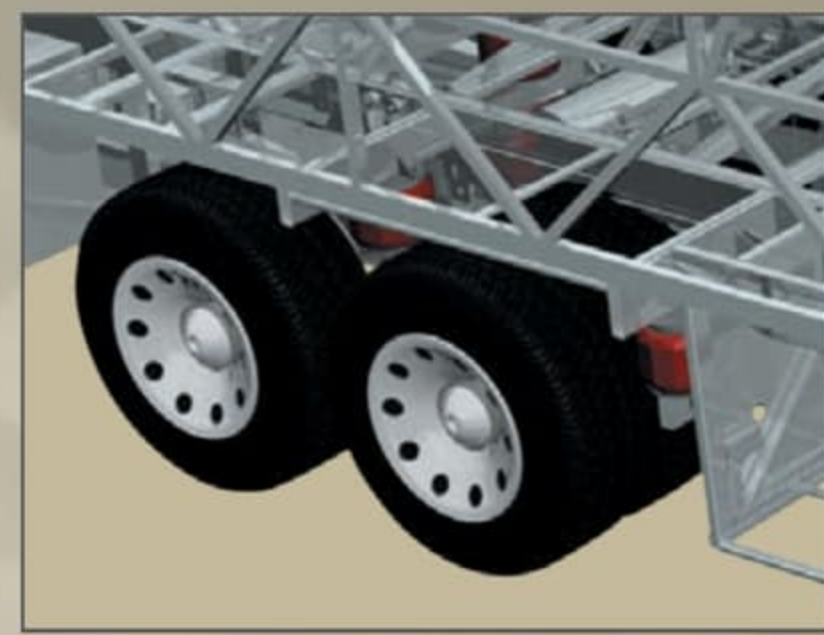
ROADMASTER RR8R AND RR10R RAISED RAIL CHASSIS

(Roadmaster RR8R: 38PDQ; Roadmaster RR10R Tag Axle: 42SKQ, 42PAQ)

- 1 A steel cage cockpit gives the Roadmaster chassis incomparable strength and safety in the front of the coach.
- 2 Every Roadmaster chassis features a steel firewall for added protection in the cockpit.
- 3 The main rails feature an exclusive raised rail design which provides for larger full pass-through storage bays with flush floors. Other highlights include a 3/8" thick frame rail — compared to the 1/4" of other manufacturers — and a stacked aluminum intercooler and radiator for optimum heat transfer and cooling.
- 4 Dual fuel fill allows you to fill the tank from either side of the coach, for greater convenience and flexibility at the pump.

- 5 The steel truss system is engineered as part of the chassis and provides outstanding strength and rigidity plus pass-through storage. In addition, the structure is pre-primed and coated with a rust-inhibiting paint.
- 6 Cushion Air Glide Suspension with eight outboard-mounted air bags and eight shock absorbers on the 38PDQ, and ten air bags (eight outboard-mounted) and ten shock absorbers on the 42SKQ and 42PAQ. Monitored leveling sensors continually adjust the air pressure at each axle to maintain a level ride and eliminate nosediving, weight transfer, and floating on curved roads. This system also stabilizes the coach on uneven surfaces.

- 7 Automatic Traction Control (ATC) eliminates wheel slippage in slick conditions and heightens control. The Anti-Lock Braking System (ABS) gives you superior stopping power, especially on steep grades. Together, these sophisticated systems offer the very best safety on the road.
- 8 Allison<sup>®</sup> 3000 MH 6-Speed World Transmission and electronic shifter. The three-point engine mounting system lowers the coach's center of gravity and reduces the amount of vibration that reaches the coach. The mounting also makes the engine easier to service. A 10,000 lb. tow hitch rating is the highest in its class.



ROADMASTER RR10R Series TAG AXLE

The 42SKQ and 42PAQ models feature 10 air bags and a tag axle with anti-lock brakes. It's all part of Monaco's commitment to overall performance and, most importantly, your safety.

ROOF CONSTRUCTION

(top to bottom)

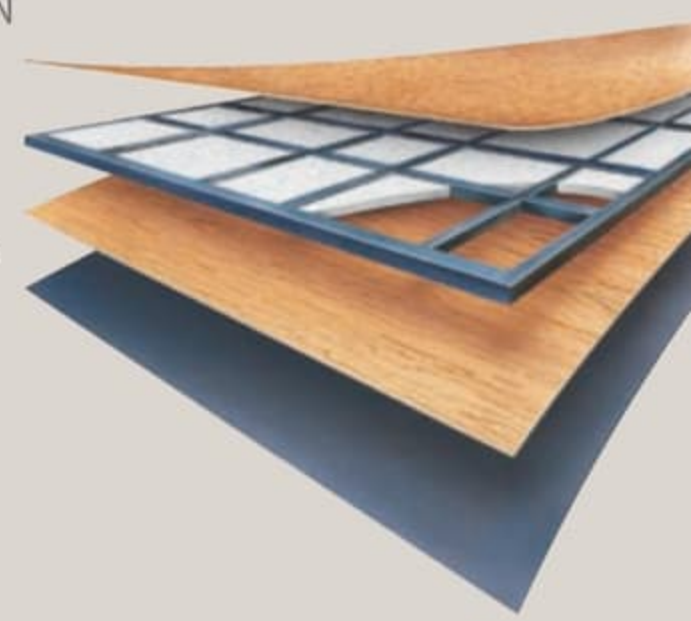
- One-piece peaked fiberglass roof
- Luaun backing
- Thick, tapered bead foam insulation
- Aluminum double I-beam superstructure filled with fiberglass insulation
- Vapor barrier
- Structure foam: thermal insulative barrier
- 1/2" bead foam insulation
- Foam padding for extra insulation
- Padded vinyl ceiling



FLOOR CONSTRUCTION

(top to bottom)

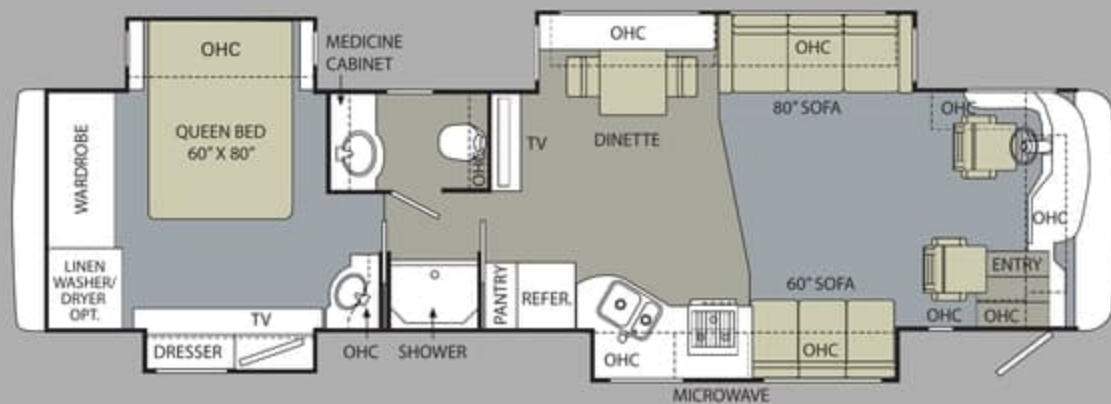
- Structurwood<sup>™</sup>
- 1-1/2" tube
- High-performance thermal insulation foam
- Luaun
- 3-ply backer



The Diplomat features a gutsy standard Cummins<sup>®</sup> ISL 425 diesel engine.



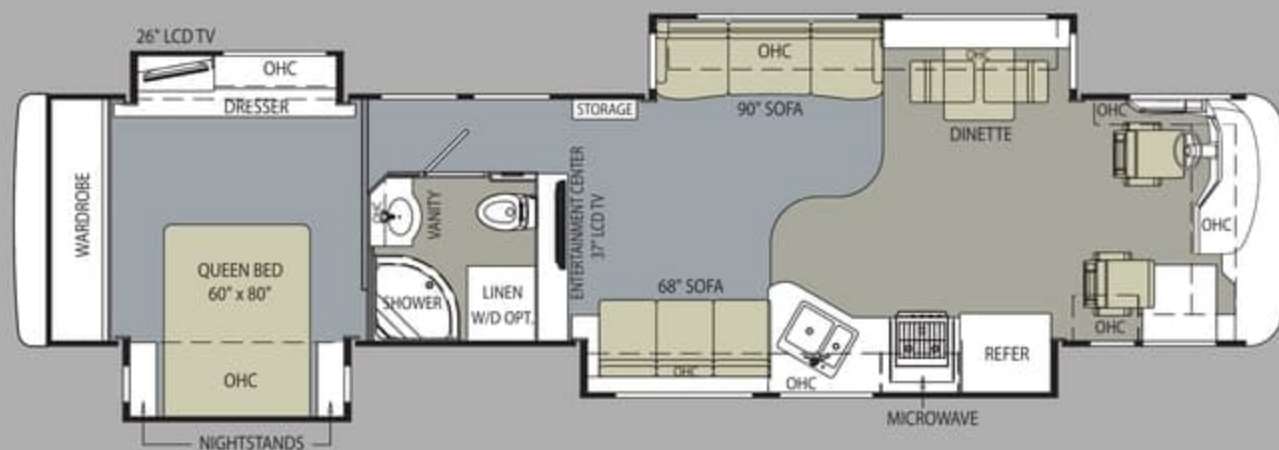




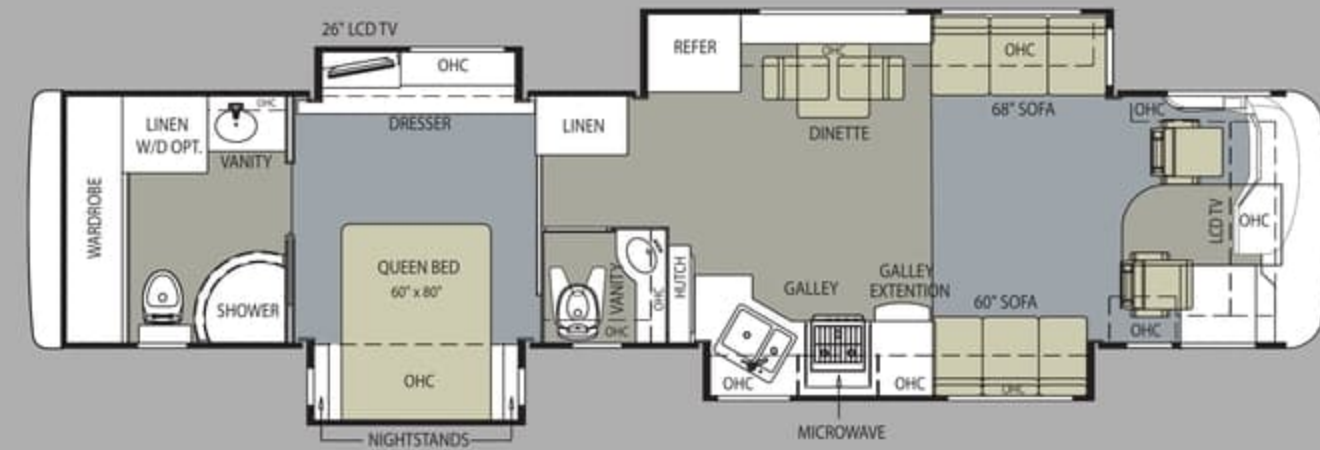
38PDQ

THE VIEW FROM ABOVE.

The 2010 Diplomat offers something for everyone, with overall lengths ranging from 38 to 42 feet. All floorplans feature quad slide-outs for spacious living. Just a few points of interest include a bath-and-a-half layout and optional king bed on the 42PAQ, a front kitchen on the 42SKQ, and a large 37-inch flatscreen LCD television in the living area hutch on the 38PDQ and 42SKQ.



42SKQ



42PAQ

 TILE  CARPET

BUY LOCALLY. ENJOY EVERYWHERE.

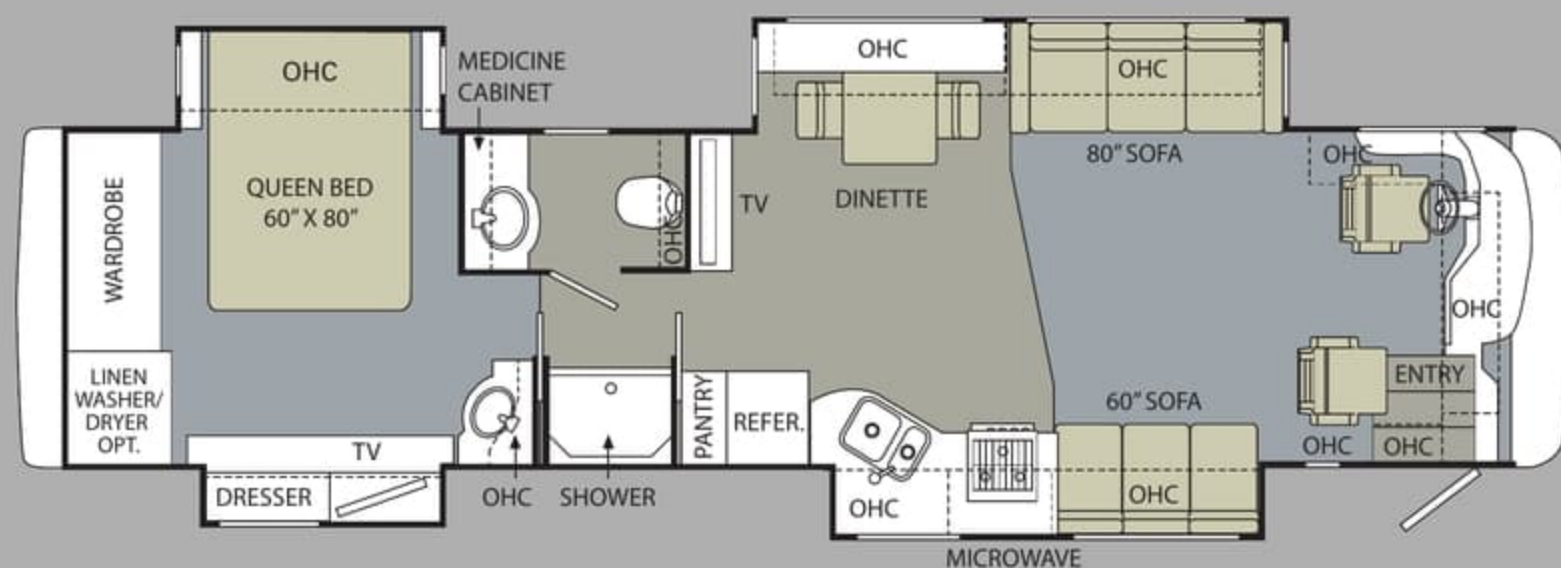
Monaco RV strongly encourages our retail customers to purchase from their local dealerships whenever possible. Buying a new Monaco RV locally allows a customer to establish a relationship with a dealer close to home and provides convenient service and support from product-trained technicians. On our end, Monaco RV will continue to provide our dealer partners and customers with the finest recreational vehicles in the industry.

ALL ROADS LEAD TO [WWW.MONACOCOACH.COM](http://WWW.MONACOCOACH.COM).

Wherever the road takes you, you're never more than a click away from your friends at Monaco. Just go to [www.monacocoach.com](http://www.monacocoach.com) for all the latest product news, club dates and destinations, a dealer locator function, and factory tour information. You can also e-mail us directly through the site at any time.



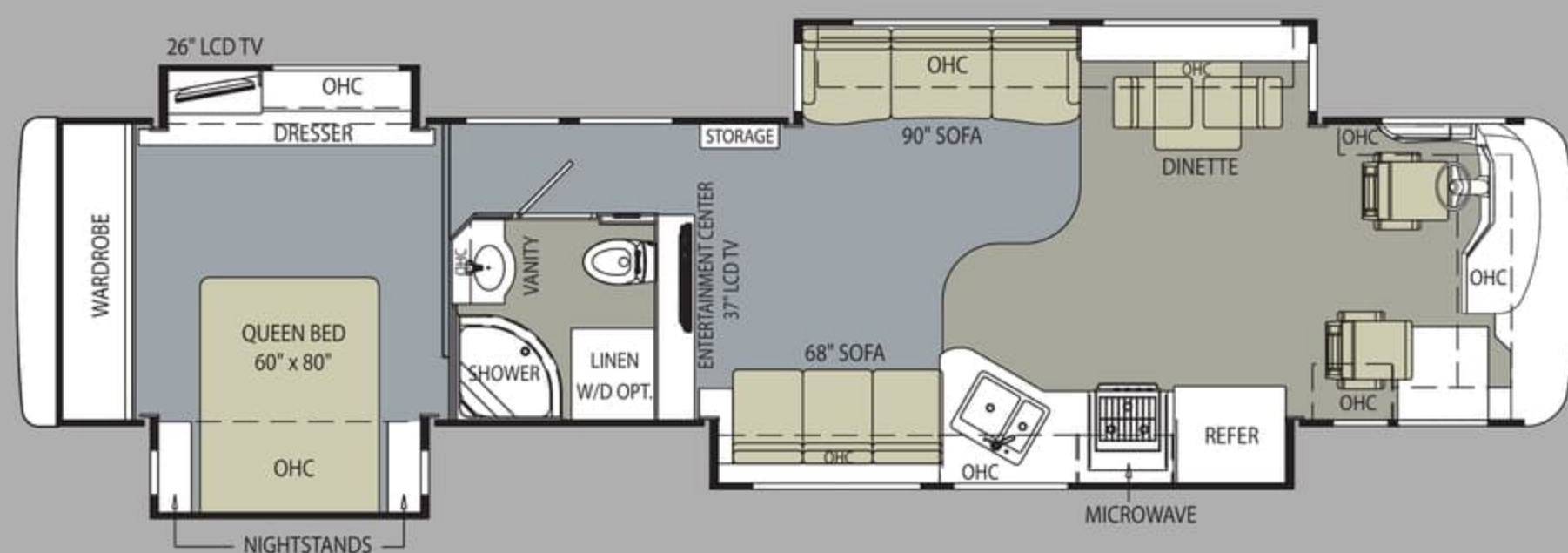




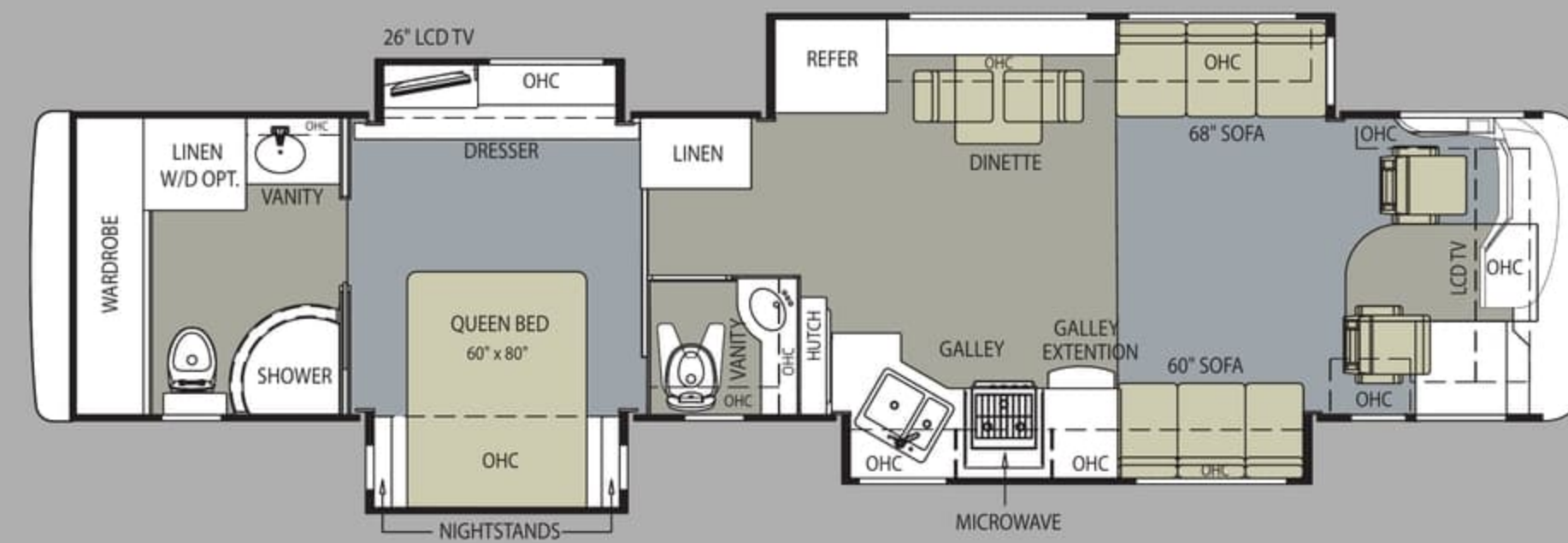
38PDQ

THE VIEW FROM ABOVE.

The 2010 Diplomat offers something for everyone, with overall lengths ranging from 38 to 42 feet. All floorplans feature quad slide-outs for spacious living. Just a few points of interest include a bath-and-a-half layout and optional king bed on the 42PAQ, a front kitchen on the 42SKQ, and a large 37-inch flatscreen LCD television in the living area hutch on the 38PDQ and 42SKQ.



42SKQ



42PAQ

TILE CARPET

BUY LOCALLY. ENJOY EVERYWHERE.

Monaco RV strongly encourages our retail customers to purchase from their local dealerships whenever possible. Buying a new Monaco RV locally allows a customer to establish a relationship with a dealer close to home and provides convenient service and support from product-trained technicians. On our end, Monaco RV will continue to provide our dealer partners and customers with the finest recreational vehicles in the industry.

ALL ROADS LEAD TO WWW.MONACOCOACH.COM.

Wherever the road takes you, you're never more than a click away from your friends at Monaco. Just go to [www.monacocoach.com](http://www.monacocoach.com) for all the latest product news, club dates and destinations, a dealer locator function, and factory tour information. You can also e-mail us directly through the site at any time.





Due to continuous product improvement, visit [www.monacocoach.com](http://www.monacocoach.com) for the latest in standards and options, specifications, and technical data.

Weight Ratings (lbs.)	Gross Vehicle	Gross Combined <sup>1</sup>	Front Gross Axle	Rear Gross Axle	Tax Axle	Measurements	Wheelbase	Overall Length	Overall Height (with A/C (add 5" for satellite option))	Interior Height	Interior Width	Exterior Width	Tank Capacity (Gall.) <sup>2</sup>	Water Heater	Gray Tank	Black Tank	Fresh Tank	LP Tank <sup>3</sup>	Fuel Tank
38PDQ	36,000	46,000	13,000	23,000	N/A		237"	39' 7"	12' 7"	84"	94.5"	100.5"		10	62	40	100	39	100
42SKQ	43,000	53,000	13,000	20,000	10,000		261"	43' 3"	12' 7"	84"	94.5"	100.5"		10	62	40	100	39	100
42PDQ	43,000	53,000	13,000	20,000	10,000		261"	43' 3"	12' 7"	84"	94.5"	100.5"		10	62	40	100	39	100

<sup>1</sup>Towing capacity is limited by GCWR; your vehicle's towing capacity is the difference between the GCWR and the actual vehicle weight, including all water, fuel, passengers and cargo. Your towed vehicle should be equipped with auxiliary brakes if the weight of the towed vehicle exceeds 1,000 lbs. Consult your owner's manual for further towing information.

<sup>2</sup>All tank capacities are estimated based upon calculations provided by the tank manufacturers and represent approximate capacities. The actual "usable capacity" may be greater or less than the estimated capacities based upon fabrication and installation of the tanks.

<sup>3</sup>Actual filled LP capacity is 80% of listing due to safety shut-off required on tank.

The actual overall length of the recreational vehicle may differ from that indicated in the brochure due to variances in the manufacturing process and/or installed components. The actual length may be greater or less than that indicated. Due to the large variety of options and floorplan arrangements available to our customers, actual weights for each unit can differ significantly. Monaco provides a weight sticker on each unit we produce which includes that unit's tank capacities and approximate weight. Consult your local Monaco dealer for unit availability and further information. The information printed in this brochure reflects product design, fabrication, and component parts at the date of printing. The manufacturer reserves the right, at any time, to make changes in product design or material or component specifications as its sole option, without

notice. This includes the substitution of components of a different brand or trade name which will result in comparable performance. All information printed in this brochure is subject to change after the date of printing. Some features shown or mentioned in this brochure are optional and may only be available in selected floorplans. Photographs may depict a floorplan option that has been discontinued or is no longer available at the time of your purchase. Photographs may show props or decorations that are not standard equipment. Monaco, the Monaco logo and its design, are registered trademarks. Other products and company names are trademarks and/or registered trademarks of their respective holders. While the color of the motorhome's exterior and the interior fabrics depicted in this sales brochure are fair and reasonable depictions,

the colors depicted may not be an exact match of the actual colors because of the variances in photo-processing and printing. Due to product improvements, changes during the model year and/or transcription errors that may occur, information represented within this brochure may not be accurate at the time of your purchase. If certain information is significant to your purchasing decision, please confirm the information with your dealer. Component part and appliance manufacturers issue limited warranties covering portions of the recreational vehicle not covered under the Limited Warranties issued by Monaco RV, LLC. To learn specific details regarding warranty coverage, please contact your selling dealership or review the warranty packet inside the recreational vehicle.

### BODY CONSTRUCTION

- Steel Cage Cockpit Construction
- Smooth Gel Coat Fiberglass Exterior Walls
- Laminated Sidewall Construction
- Peaked One-Piece Fiberglass Roof with Fiberglass Insulation
- Pullout Generator Tray with One-Piece Door
- Electric Flush-Floor Stepwell Cover
- Full Pass-Through Storage Bay Slide-Out Tray (Complete Pass-Through)
- Chrome Dual-Head Power-Controlled Heated Exterior Mirrors with Turn Indicator Lights

- Side-Hinged Baggage Doors
- One-Piece Polyethylene Pass-Through Storage Compartment
- Slide-Out Battery Tray (N/A 38PDQ)
- Full-Length Mud Flap
- 3M Film Front Mask
- Deluxe Full-Body Paint
- Roof Ladder
- Undercoating

### OPTIONS

- Standard Run Package: 3-Camera System, Keyless Entry, Central Vacuum, Power Cord Reel, RV Sani-Con System, Power Water Hose Reel, Exterior Tank Monitor Gauges, Auto Gen Start

### CHASSIS/ENGINE/SUSPENSION

- Roadmaster Raised Rail RR8R-Series Chassis (38PDQ)
- Cushion Air Glide Suspension with Eight Outboard-Mounted Air Bags and Eight Shock Absorbers (38PDQ)
- Roadmaster Raised Rail RR10R-Series Chassis (42SKQ, 42PAQ)
- Cushion Air Glide Suspension with Ten Air Bags (Eight Outboard-Mounted) and Ten Shock Absorbers (42SKQ, 42PAQ)
- Tag Axle with Anti-Lock Brake System (42SKQ, 42PAQ)

- Cummins® 425 HP ISL Engine with Allison® 3000 MH 6-Speed World Transmission and Electronic Shifter
- Torque: 1,200 lbs./ft., Max. Net at 1,300 RPM
- Engine Displacement: 538"/8.9L
- Aluminum Rear-Mounted Radiator with CAC Cooler
- Dual Fuel Fill
- 160 Amp Alternator
- Rear Axle Ratio: 4.30:1
- Prewire for Supplemental Braking System

- Polished Aluminum Wheels
- Anti-Lock Braking System with Full Air Brakes
- Automatic Traction Control
- Variable Geometry Turbo Exhaust Brake
- Automatic Hydraulic Leveling System
- 10,000 lb. Hitch Receiver with Dual Connector 4-Pin or 7-Pin

### COCKPIT

- In-Dash Driver's Message Center
- In-Dash AM/FM/CD Stereo Radio with Sirius-Ready Compatibility, Aux-In-Connection, SD Card Slot and Weather Band
- Adjustable Brake and Accelerator Pedals
- Color Rear Vision Camera System
- Power Windshield and Manual Driver/Passenger Solar Screens with Blackout Shades
- Adjustable Brake and Accelerator Pedals

- CB Prep
- Color Rear Vision Camera System
- Lighted VIP Smartwheel® Multiplexed Steering Wheel with Controls for Windshield Wipers, ICC and Cruise Control
- Intermittent Windshield Wipers
- Roof-Mounted Air Horn
- Ultraleather™ Six-Way Power Pilot and Co-Pilot Seat with Power Footrest
- Color-Coordinated Carpeted Floor Mats

### OPTIONS

- 3-Camera Rear Vision Camera System
- GPS System
- Sirius Radio Satellite Tuner with Antenna
- 10-Disc CD Changer

### APPLIANCES AND ACCESSORIES

- Large Four-Door Refrigerator with Ice Maker
- High-Output 3-Sealed-Burner Cooktop without Oven
- 32" Flatscreen LCD TV in Front Cockpit Overhead (42PAQ)
- 37" Flatscreen LCD TV in Living Area Hutch (N/A 42PAQ)
- 26" LCD Color TV with Remote Control in Bedroom
- Home Theater System
- Digital Satellite System – Prep
- Interior Cable TV Hookup and Telephone Jacks
- Exterior Gas Line Hookup for LP Accessories
- Washer/Dryer Prep
- Curbside Exterior Patio Hookups for Cable, 110V Outlet, with Hatch Door to Exterior

### OPTIONS

- High-Output 3-Sealed-Burner Range with Oven
- Dometic Sidewise 14 Cu. Ft. 2-Way Refrigerator with Ice Dispenser in the Door (N/A 38PDQ)
- Residential Stainless Steel Refrigerator (N/A 38PDQ)
- Stainless Steel Package: Includes Stainless Steel Refrigerator and Microwave (Not Available with Residential Refrigerator Option)
- Stainless Steel Microwave (42SKQ Only)
- Central Vacuum
- Combination Washer/Dryer
- Stackable Washer/Dryer (42SKQ Only)
- Bedroom DVD Player
- In-Motion Satellite (Does Not Include Receivers)

- Multi-Satellite HD Dish (Does Not Include Receivers) (Stationary Operation Only)
- High-Definition Cinema Package: Sound Bar with DVD, Wireless Sub Woofer and Blue Ray Player (N/A 42PAQ)
- Fireplace (42SKQ)
- Exterior Entertainment Center (32" LCD TV with AM/FM/CD Radio with Two Speakers) (N/A 42SKQ)



Due to continuous product improvement, visit [www.monacocoach.com](http://www.monacocoach.com) for the latest in standards and options, specifications, and technical data.

Weight Ratings (lbs.)	Gross Vehicle	Gross Combined <sup>1</sup>	Front Gross Axle	Rear Gross Axle	Tax Axle	Measurements	Wheelbase	Overall Length	Overall Height (with A/C) (add 5" for satellite option)	Interior Height	Interior Width	Exterior Width	Tank Capacity (Gal.) <sup>2</sup>	Water Heater	Gray Tank	Black Tank	Fresh Tank	LP Tank <sup>3</sup>	Fuel Tank
38PDQ	36,000	46,000	13,000	23,000	N/A		237"	39' 7"	12' 7"	84"	94.5"	100.5"		10	62	40	100	39	100
42SKQ	43,000	53,000	13,000	20,000	10,000		261"	43' 3"	12' 7"	84"	94.5"	100.5"		10	62	40	100	39	100
42PDQ	43,000	53,000	13,000	20,000	10,000		261"	43' 3"	12' 7"	84"	94.5"	100.5"		10	62	40	100	39	100

<sup>1</sup>Towing capacity is limited by GCWR; your vehicle's towing capacity is the difference between the GCWR and the actual vehicle weight, including all water, fuel, passengers and cargo. Your towed vehicle should be equipped with auxiliary brakes if the weight of the towed vehicle exceeds 1,000 lbs. Consult your owner's manual for further towing information.

<sup>2</sup>All tank capacities are estimated based upon calculations provided by the tank manufacturers and represent approximate capacities. The actual "usable capacity" may be greater or less than the estimated capacities based upon fabrication and installation of the tanks.

<sup>3</sup>Actual filled LP capacity is 80% of listing due to safety shut-off required on tank.

The actual overall length of the recreational vehicle may differ from that indicated in the brochure due to variances in the manufacturing process and/or installed components. The actual length may be greater or less than that indicated. Due to the large variety of options and floorplan arrangements available to our customers, actual weights for each unit can differ significantly. Monaco provides a weight sticker on each unit we produce which includes that unit's tank capacities and approximate weight. Consult your local Monaco dealer for unit availability and further information. The information printed in this brochure reflects product design, fabrication, and component parts at the date of printing. The manufacturer reserves the right, at any time, to make changes in product design or material or component specifications as its sole option, without

notice. This includes the substitution of components of a different brand or trade name which will result in comparable performance. All information printed in this brochure is subject to change after the date of printing. Some features shown or mentioned in this brochure are optional and may only be available in selected floorplans. Photographs may depict a floorplan option that has been discontinued or is no longer available at the time of your purchase. Photographs may show props or decorations that are not standard equipment. Monaco, the Monaco logo and its design, are registered trademarks. Other products and company names are trademarks and/or registered trademarks of their respective holders. While the color of the motorhome's exterior and the interior fabrics depicted in this sales brochure are fair and reasonable depictions,

the colors depicted may not be an exact match of the actual colors because of the variances in photo-processing and printing. Due to product improvements, changes during the model year and/or transcription errors that may occur, information represented within this brochure may not be accurate at the time of your purchase. If certain information is significant to your purchasing decision, please confirm the information with your dealer. Component part and appliance manufacturers issue limited warranties covering portions of the recreational vehicle not covered under the Limited Warranties issued by Monaco RV, LLC. To learn specific details regarding warranty coverage, please contact your selling dealership or review the warranty packet inside the recreational vehicle.

### BODY CONSTRUCTION

- › Steel Cage Cockpit Construction
- › Smooth Gel Coat Fiberglass Exterior Walls
- › Laminated Sidewall Construction
- › Peaked One-Piece Fiberglass Roof with Fiberglass Insulation
- › Pullout Generator Tray with One-Piece Door
- › Electric Flush-Floor Stepwell Cover
- › Full Pass-Through Storage Bay Slide-Out Tray (Complete Pass-Through)
- › Chrome Dual-Head Power-Controlled Heated Exterior Mirrors with Turn Indicator Lights

- › Side-Hinged Baggage Doors
- › One-Piece Polyethylene Pass-Through Storage Compartment
- › Slide-Out Battery Tray (N/A 38PDQ)
- › Full-Length Mud Flap
- › 3M Film Front Mask
- › Deluxe Full-Body Paint
- › Roof Ladder
- › Undercoating

### OPTIONS

- › Standard Run Package: 3-Camera System, Keyless Entry, Central Vacuum, Power Cord Reel, RV Sani-Con System, Power Water Hose Reel, Exterior Tank Monitor Gauges, Auto Gen Start

### CHASSIS/ENGINE/SUSPENSION

- › Roadmaster Raised Rail RR8R-Series Chassis (38PDQ)
- › Cushion Air Glide Suspension with Eight Outboard-Mounted Air Bags and Eight Shock Absorbers (38PDQ)
- › Roadmaster Raised Rail RR10R-Series Chassis (42SKQ, 42PAQ)
- › Cushion Air Glide Suspension with Ten Air Bags (Eight Outboard-Mounted) and Ten Shock Absorbers (42SKQ, 42PAQ)
- › Tag Axle with Anti-Lock Brake System (42SKQ, 42PAQ)

- › Cummins<sup>®</sup> 425 HP ISL Engine with Allison<sup>®</sup> 3000 MH 6-Speed World Transmission and Electronic Shifter
- › Torque: 1,200 lbs./ft., Max. Net at 1,300 RPM
- › Engine Displacement: 538"/8.9L
- › Aluminum Rear-Mounted Radiator with CAC Cooler
- › Dual Fuel Fill
- › 160 Amp Alternator
- › Rear Axle Ratio: 4.30:1
- › Prewire for Supplemental Braking System

- › Polished Aluminum Wheels
- › Anti-Lock Braking System with Full Air Brakes
- › Automatic Traction Control
- › Variable Geometry Turbo Exhaust Brake
- › Automatic Hydraulic Leveling System
- › 10,000 lb. Hitch Receiver with Dual Connector 4-Pin or 7-Pin

### COCKPIT

- › In-Dash Driver's Message Center
- › In-Dash AM/FM/CD Stereo Radio with Sirius-Ready Compatibility, Aux-In-Connection, SD Card Slot and Weather Band
- › Adjustable Brake and Accelerator Pedals
- › Color Rear Vision Camera System
- › Power Windshield and Manual Driver/Passenger Solar Screens with Blackout Shades
- › Adjustable Brake and Accelerator Pedals

- › CB Prep
- › Color Rear Vision Camera System
- › Lighted VIP Smartwheel<sup>®</sup> Multiplexed Steering Wheel with Controls for Windshield Wipers, ICC and Cruise Control
- › Intermittent Windshield Wipers
- › Roof-Mounted Air Horn
- › Ultraleather<sup>™</sup> Six-Way Power Pilot and Co-Pilot Seat with Power Footrest
- › Color-Coordinated Carpeted Floor Mats

### OPTIONS

- › 3-Camera Rear Vision Camera System
- › GPS System
- › Sirius Radio Satellite Tuner with Antenna
- › 10-Disc CD Changer

### APPLIANCES AND ACCESSORIES

- › Large Four-Door Refrigerator with Ice Maker
- › High-Output 3-Sealed-Burner Cooktop without Oven
- › 32" Flatscreen LCD TV in Front Cockpit Overhead (42PAQ)
- › 37" Flatscreen LCD TV in Living Area Hutch (N/A 42PAQ)
- › 26" LCD Color TV with Remote Control in Bedroom
- › Home Theater System
- › Digital Satellite System – Prep
- › Interior Cable TV Hookup and Telephone Jacks
- › Exterior Gas Line Hookup for LP Accessories
- › Washer/Dryer Prep
- › Curbside Exterior Patio Hookups for Cable, 110V Outlet, with Hatch Door to Exterior

### OPTIONS

- › High-Output 3-Sealed-Burner Range with Oven
- › Dometic Sidewise 14 Cu. Ft. 2-Way Refrigerator with Ice Dispenser in the Door (N/A 38PDQ)
- › Residential Stainless Steel Refrigerator (N/A 38PDQ)
- › Stainless Steel Package: Includes Stainless Steel Refrigerator and Microwave (Not Available with Residential Refrigerator Option)
- › Stainless Steel Microwave (42SKQ Only)
- › Central Vacuum
- › Combination Washer/Dryer
- › Stackable Washer/Dryer (42SKQ Only)
- › Bedroom DVD Player
- › In-Motion Satellite (Does Not Include Receivers)

- › Multi-Satellite HD Dish (Does Not Include Receivers) (Stationary Operation Only)
- › High-Definition Cinema Package: Sound Bar with DVD, Wireless Sub Woofer and Blue Ray Player (N/A 42PAQ)
- › Fireplace (42SKQ)
- › Exterior Entertainment Center (32" LCD TV with AM/FM/CD Radio with Two Speakers) (N/A 42SKQ)



## INTERIOR

- Hardwood Cabinetry
- Refrigerator Raised Panel Hardwood Inserts
- Polished Radius Solid Surface Kitchen Countertop with Solid Surface Sink with Two Sink Covers
- Pullout Countertop Extension with Drawer and Corian® Top (42PAQ)
- Kitchen Galley Backsplash: Ceramic Tile with Decorative Glass Accents
- All Other Countertops Polished Corian®
- Solid Surface Bathroom Countertop with Integrated Sink
- Ceramic Tile Flooring with Accent Tile
- Tile Entry Floor
- Designer Carpeting in Living Area and Bedroom
- Hardwood Slide-Out Fascia with Decorative Center Block
- Decorative Window Boxes Throughout Coach
- Day/Night Pleated Blackout Shades in Living Area and Bedroom
- EZ Lift Mini Blinds in Kitchen and Private Bath
- Soil Repellent Protection on Fabric

## OPTIONS

- Decors: Lunar Eclipse and Electric Avenue
- Hardwood Cabinetry: Newport Cherry
- Full Tile in Living Room

## PLUMBING AND LP SYSTEMS

- Demand Water System and Water Pump
- 10-Gallon LP Gas/Electric Water Heater with Electronic Ignition DSI
- Single Lever Kitchen Faucet with Pullout Sprayer
- Bath Lavatory Faucet
- Central Water Filtration System
- Water Heater Bypass Valve
- Water Pump Switch in Kitchen Galley, Private Bath Wall and Service Bay Area
- China Toilet
- Silent Plus China Electronic Toilet (42PAQ)
- Shower Inside Wet Bay with Hot/Cold Water
- Holding Tank Rinsing System
- Gravity and Pressurized Water Fill
- One-Piece Round Shower (42SKQ Only)
- One-Piece Rectangular Shower (38PDQ Only)
- One-Piece Neo-Angle Shower with Obscured Glass Door (42PAQ Only)
- Satin Nickel Shower Faucet with Slide Bar

## OPTIONS

- RV Sani-Con Tank Drainage System (Eliminated Sewer Storage)
- Water Hose Reel
- Exterior Tank Monitor Gauge in Wet Bay
- Neo-Angled Bathtub (N/A 38PDQ)

## FURNITURE

- Freestanding Dinette with Full-Length Wall Cabinet, Two Freestanding Chairs and Two Folding Chairs
- Roadside: Fabric Jackknife Sofa
- Curbside: Fabric Jackknife Sofa (42SKQ)
- Curbside: Fabric Loveseat (38PDQ, 42PAQ)
- Queen Bed (60" x 80") with Solid Surface Nightstands

## OPTIONS

- King Bed (72" x 80") with No Nightstands (42PAQ Only)
- King Bed (72" x 80") with Two Nightstands (42SKQ Only)
- Queen Bed Select Comfort Air Mattress
- King Bed Select Comfort Air Mattress (N/A 38PDQ)
- Roadside: Fabric Hide-A-Bed with Air Mattress
- Roadside: Ultraleather™ Jackknife Sofa
- Roadside: Ultraleather™ Hide-A-Bed with Air Mattress
- Roadside: Ultraleather™ Booth Dinette Ensemble (42SKQ Only)
- Roadside: (2) Leather Euro-Recliners with Table (42SKQ Only)
- Roadside: Wraparound Computer Desk with Ultraleather™ Euro-Recliner (42SKQ Only)
- Curbside: Ultraleather™ Hide-A-Bed with Air Mattress (42SKQ Only)
- Curbside: Ultraleather™ Loveseat (N/A 42SKQ)
- Curbside: Ultraleather™ Jackknife Sofa (42SKQ Only)

## HEATING, VENTS AND AIR CONDITIONING

- Dual 15M BTU Roof Air Conditioners with Ducted Air, Heat Pumps and Digital Thermostat Control (38PDQ Only)
- Dual 15M BTU and single 13.5M BTU Roof Air Conditioners with Ducted Air, Heat Pumps and Digital Thermostat Control (42SKQ, 42PAQ)
- Dual Zone Electronic Ignition Furnaces (1) 31M and (1) 20M BTU
- Electronic Dash AC/Heat Climate Control System
- Kitchen Powered 12V Attic Fan with Wall Control of Automatic Dome and Fan Power
- 12V Attic Fan in Private Bath with Wall Control of Automatic Dome and Fan Power
- 12V Heater in Wet Bay

## OPTIONS

- Ceiling Fan in Bedroom

## WINDOWS, DOORS AND AWNINGS

- Radius Flush-Mounted Dual Pane Safety Glass Dark Tinted Windows
- Front Entry Door with Removable Screen and Anti-Skid Steps
- Automatic Front Door Awning
- Topper Slide-Out Awnings Living Area and Bedroom
- Automatic Patio Awning
- Tinted Skylight in Bathroom with Protecta Glaze
- Window Awnings on All Slide-Out House Windows Except Slide-Out Windows Under Patio Awning

## OPTIONS

- Keyless Entry (Key Fob Only)

## ELECTRICAL SYSTEMS AND LIGHTS

- 50 Amp 12V Distribution Panel and Power Cord
- Power Control System
- Onan® 8.0 kW Quiet Diesel Generator on Manual Slide-Out Tray (38PDQ Only)
- Onan® 10.0 kW Quiet Diesel Generator on Manual Slide-Out Tray (42SKQ, 42PAQ)
- Four 6V Deep Cycle Batteries
- Two 12V Heavy-Duty Chassis Batteries
- Battery Disconnect Switch at Front Door
- Battery Boost Switch in Cockpit
- 2,000 Watt Inverter
- Recessed Docking Lights
- Porch Light and Exterior Step Light on Same Switch
- Lighted Interior Steps
- Lights in Outside Storage Compartments with Switch on Passenger Console and Utility Bay
- 110 Outlet in Outside Storage Compartment
- Underhood Utility Light
- Convenience Center in Hallway
- Prewire for Solar Panel

## OPTIONS

- Auto Generator Start
- Solar Panel
- Power Cord Reel

## SAFETY

- Fire Extinguisher
- Deadbolt Lock on Entrance Door
- 120V GFI Protected Circuit (Kitchen, Bath, Exterior)
- LP Gas Detector
- Smoke Detector
- Carbon Monoxide Detector
- Driver and Passenger Three-Point Seatbelts (Wall Mounted)
- Third Brake Safety Light
- Egress Window(s)



## INTERIOR

- › Hardwood Cabinetry
- › Refrigerator Raised Panel Hardwood Inserts
- › Polished Radius Solid Surface Kitchen Countertop with Solid Surface Sink with Two Sink Covers
- › Pullout Countertop Extension with Drawer and Corian® Top (42PAQ)
- › Kitchen Galley Backsplash: Ceramic Tile with Decorative Glass Accents
- › All Other Countertops Polished Corian®
- › Solid Surface Bathroom Countertop with Integrated Sink
- › Ceramic Tile Flooring with Accent Tile
- › Tile Entry Floor
- › Designer Carpeting in Living Area and Bedroom
- › Hardwood Slide-Out Fascia with Decorative Center Block
- › Decorative Window Boxes Throughout Coach
- › Day/Night Pleated Blackout Shades in Living Area and Bedroom
- › EZ Lift Mini Blinds in Kitchen and Private Bath
- › Soil Repellent Protection on Fabric

## OPTIONS

- › Decors: Lunar Eclipse and Electric Avenue
- › Hardwood Cabinetry: Newport Cherry
- › Full Tile in Living Room

## FURNITURE

- › Freestanding Dinette with Full-Length Wall Cabinet, Two Freestanding Chairs and Two Folding Chairs
- › Roadside: Fabric Jackknife Sofa
- › Curbside: Fabric Jackknife Sofa (42SKQ)
- › Curbside: Fabric Loveseat (38PDQ, 42PAQ)
- › Queen Bed (60" x 80") with Solid Surface Nightstands

## OPTIONS

- › King Bed (72" x 80") with No Nightstands (42PAQ Only)
- › King Bed (72" x 80") with Two Nightstands (42SKQ Only)
- › Queen Bed Select Comfort Air Mattress
- › King Bed Select Comfort Air Mattress (N/A 38PDQ)
- › Roadside: Fabric Hide-A-Bed with Air Mattress
- › Roadside: Ultraleather™ Jackknife Sofa
- › Roadside: Ultraleather™ Hide-A-Bed with Air Mattress
- › Roadside: Ultraleather™ Booth Dinette Ensemble (42SKQ Only)
- › Roadside: (2) Leather Euro-Recliners with Table (42SKQ Only)
- › Roadside: Wraparound Computer Desk with Ultraleather™ Euro-Recliner (42SKQ Only)
- › Curbside: Ultraleather™ Hide-A-Bed with Air Mattress (42SKQ Only)
- › Curbside: Ultraleather™ Loveseat (N/A 42SKQ)
- › Curbside: Ultraleather™ Jackknife Sofa (42SKQ Only)

## ELECTRICAL SYSTEMS AND LIGHTS

- › 50 Amp 12V Distribution Panel and Power Cord
- › Power Control System
- › Onan® 8.0 kW Quiet Diesel Generator on Manual Slide-Out Tray (38PDQ Only)
- › Onan® 10.0 kW Quiet Diesel Generator on Manual Slide-Out Tray (42SKQ, 42PAQ)
- › Four 6V Deep Cycle Batteries
- › Two 12V Heavy-Duty Chassis Batteries
- › Battery Disconnect Switch at Front Door
- › Battery Boost Switch in Cockpit
- › 2,000 Watt Inverter
- › Recessed Docking Lights
- › Porch Light and Exterior Step Light on Same Switch
- › Lighted Interior Steps
- › Lights in Outside Storage Compartments with Switch on Passenger Console and Utility Bay
- › 110 Outlet in Outside Storage Compartment
- › Underhood Utility Light
- › Convenience Center in Hallway
- › Prewire for Solar Panel

## OPTIONS

- › Auto Generator Start
- › Solar Panel
- › Power Cord Reel

## PLUMBING AND LP SYSTEMS

- › Demand Water System and Water Pump
- › 10-Gallon LP Gas/Electric Water Heater with Electronic Ignition DSI
- › Single Lever Kitchen Faucet with Pullout Sprayer
- › Bath Lavatory Faucet
- › Central Water Filtration System
- › Water Heater Bypass Valve
- › Water Pump Switch in Kitchen Galley, Private Bath Wall and Service Bay Area
- › China Toilet
- › Silent Plus China Electronic Toilet (42PAQ)
- › Shower Inside Wet Bay with Hot/Cold Water
- › Holding Tank Rinsing System
- › Gravity and Pressurized Water Fill
- › One-Piece Round Shower (42SKQ Only)
- › One-Piece Rectangular Shower (38PDQ Only)
- › One-Piece Neo-Angle Shower with Obscured Glass Door (42PAQ Only)
- › Satin Nickel Shower Faucet with Slide Bar

## OPTIONS

- › RV Sani-Con Tank Drainage System (Eliminated Sewer Storage)
- › Water Hose Reel
- › Exterior Tank Monitor Gauge in Wet Bay
- › Neo-Angled Bathtub (N/A 38PDQ)

## HEATING, VENTS AND AIR CONDITIONING

- › Dual 15M BTU Roof Air Conditioners with Ducted Air, Heat Pumps and Digital Thermostat Control (38PDQ Only)
- › Dual 15M BTU and single 13.5M BTU Roof Air Conditioners with Ducted Air, Heat Pumps and Digital Thermostat Control (42SKQ, 42PAQ)
- › Dual Zone Electronic Ignition Furnaces (1) 31M and (1) 20M BTU
- › Electronic Dash AC/Heat Climate Control System
- › Kitchen Powered 12V Attic Fan with Wall Control of Automatic Dome and Fan Power
- › 12V Attic Fan in Private Bath with Wall Control of Automatic Dome and Fan Power
- › 12V Heater in Wet Bay

## OPTIONS

- › Ceiling Fan in Bedroom

## WINDOWS, DOORS AND AWNINGS

- › Radius Flush-Mounted Dual Pane Safety Glass Dark Tinted Windows
- › Front Entry Door with Removable Screen and Anti-Skid Steps
- › Automatic Front Door Awning
- › Topper Slide-Out Awnings Living Area and Bedroom
- › Automatic Patio Awning
- › Tinted Skylight in Bathroom with Protecta Glaze
- › Window Awnings on All Slide-Out House Windows Except Slide-Out Windows Under Patio Awning

## OPTIONS

- › Keyless Entry (Key Fob Only)

## SAFETY

- › Fire Extinguisher
- › Deadbolt Lock on Entrance Door
- › 120V GFI Protected Circuit (Kitchen, Bath, Exterior)
- › LP Gas Detector
- › Smoke Detector
- › Carbon Monoxide Detector
- › Driver and Passenger Three-Point Seatbelts (Wall Mounted)
- › Third Brake Safety Light
- › Egress Window(s)





MONACO™

DRIVING YOUR DREAM.

At Monaco RV it's our goal for all our customers to enjoy their RV experience from the beginning. We have forged strong, reliable relationships with our dealer partners, and we encourage our customers to do the same. We're proud to boast a network of over 350 dealership partners and service centers across North America. We're confident that this relationship will only enhance your RV experience and provide the added peace of mind you desire, so you can focus on the important stuff. After all, we're not just selling a world-class product, we're selling "fun." You can rest assured, Monaco RV will be along for the ride, every mile your RV adventure takes you.

SIGNATURE SERIES



DYNASTY™



CAMELOT™



DIPLOMAT™



CAYMAN™



MONARCH™



RIPTIDE™



MONTCLAIR







MONACO®

DRIVING YOUR DREAM.

At Monaco RV it's our goal for all our customers to enjoy their RV experience from the beginning. We have forged strong, reliable relationships with our dealer partners, and we encourage our customers to do the same. We're proud to boast a network of over 350 dealership partners and service centers across North America. We're confident that this relationship will only enhance your RV experience and provide the added peace of mind you desire, so you can focus on the important stuff. After all, we're not just selling a world-class product, we're selling "fun." You can rest assured, Monaco RV will be along for the ride, every mile your RV adventure takes you.

SIGNATURE SERIES



DYNASTY™



CAMELOT™



DIPLOMAT™



CAYMAN™



MONARCH™



RIPTIDE™



MONTCLAIR

