



 SIGNATURE SERIES

2010

"Now, it seems like anything's possible."



MONACO

DRIVING YOUR DREAM.





 SIGNATURE SERIES
2010

"Now, it seems like anything's possible."



MONACO

DRIVING YOUR DREAM.





SIGNATURE SERIES | 



MONACO®

DRIVING YOUR DREAM.

When something's right, you just know it. Everything falls into place. The sky's a bluer blue. The fish suddenly start biting. The rain holds off until midnight. The road ahead is surprisingly smooth. Such is life in the perfect motorcoach — the 2010 Signature Series. This is the one you've been longing for. A coach so luxurious, so finely tuned, that you forget your worries and embrace life's possibilities instead. Where will you go today? What's next on your life list? With the Signature Series, anything is possible.

CAMBRIDGE IV | NATURAL CHERRY | GOLDEN NUGGET





MONACO®

DRIVING YOUR DREAM.

When something's right, you just know it. Everything falls into place. The sky's a bluer blue. The fish suddenly start biting. The rain holds off until midnight. The road ahead is surprisingly smooth. Such is life in the perfect motorcoach — the 2010 Signature Series. This is the one you've been longing for. A coach so luxurious, so finely tuned, that you forget your worries and embrace life's possibilities instead. Where will you go today? What's next on your life list? With the Signature Series, anything is possible.



CAMBRIDGE IV | NATURAL CHERRY | GOLDEN NUGGET



REFINED DINING.

Have a taste for the good life? You're in luck. The Signature Series serves up the sweetest amenities this side of Park Avenue. Let's start in the galley. Exquisite, isn't it? That's what high-gloss Corian® surfaces, mosaic tile backsplashes, and authentic hardwoods will do for you. Of course, all the appliances are top-notch. And virtually everything comes standard — high-gloss tile floors, a central water purifier, an Insta-Hot® water system, power Vienna shades, and more. Radiant floor heating (ahhh) is optional. At dinnertime, you'll enjoy the roominess of a legless, side-slide dinette table or an optional leather sectional booth ensemble. Luxury is served.



REFINED DINING.

Have a taste for the good life? You're in luck. The Signature Series serves up the sweetest amenities this side of Park Avenue. Let's start in the galley. Exquisite, isn't it? That's what high-gloss Corian® surfaces, mosaic tile backsplashes, and authentic hardwoods will do for you. Of course, all the appliances are top-notch. And virtually everything comes standard — high-gloss tile floors, a central water purifier, an Insta-Hot® water system, power Vienna shades, and more. Radiant floor heating (ahhh) is optional. At dinnertime, you'll enjoy the roominess of a legless, side-slide dinette table or an optional leather sectional booth ensemble. Luxury is served.





AWAKEN TO THE POSSIBILITIES.

Even in your wildest dreams, you probably never imagined a master suite like this. From the stately queen (or optional king) bed to the glorious 32" LCD television with built-in DVD player, the Signature Series has it all. A Corian® shower with mosaic tile design. Dimmers for the vanity lights. A combination washer/dryer. Even a bedroom monitor for the exterior security cameras. Guess who's going to sleep well tonight?

GOLDEN NUGGET
CAMBRIDGE IV | NATURAL CHEER





AWAKEN TO THE POSSIBILITIES.

Even in your wildest dreams, you probably never imagined a master suite like this. From the stately queen (or optional king) bed to the glorious 32" LCD television with built-in DVD player, the Signature Series has it all. A Corian® shower with mosaic tile design. Dimmers for the vanity lights. A combination washer/dryer. Even a bedroom monitor for the exterior security cameras. Guess who's going to sleep well tonight?

GOLDEN NUGGET

CAMBRIDGE IV | NATURAL CHERRY





SIGNATURE SERIES
COCKPIT

OH, WHAT A RIDE.

This'll get your heart pumping — 525 thundering horses and a tweaked-out command center. Good thing you have comfortable accommodations for the ride. Both leather pilot seats feature six-way power, heat, adjustable armrests, and electric headrests. Other thrilling amenities include a new touch-screen stereo system with built-in GPS, Multiplex gauges, a 42" LCD TV with in-motion digital satellite, and high-end options like a Blu-ray Disc® package and Bluetooth® HandsFreeLink® for your cell phone. Wheeee!

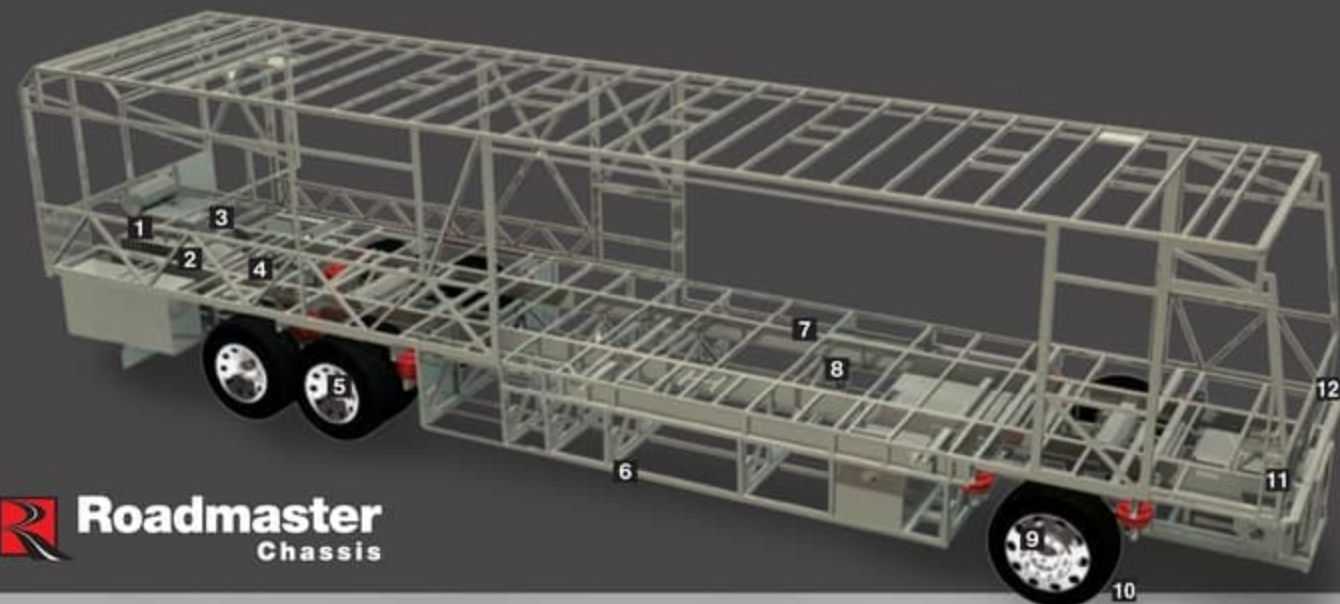


CAMBRIDGE IV | NATURAL CHERRY | GOLDEN NUGGET



OH, WHAT A RIDE.

This'll get your heart pumping — 525 thundering horses and a tweaked-out command center. Good thing you have comfortable accommodations for the ride. Both leather pilot seats feature six-way power, heat, adjustable armrests, and electric headrests. Other thrilling amenities include a new touch-screen stereo system with built-in GPS, Multiplex gauges, a 42" LCD TV with in-motion digital satellite, and high-end options like a Blu-ray Disc® package and Bluetooth® HandsFreeLink® for your cell phone. Wheee!



THE DIFFERENCE IS IN THE DETAILS.

Take the wheel of a luxury motorhome, and you're taking the wheel of the chassis it rides on. That's why the Signature Series rides exclusively on a Roadmaster chassis that is custom built to deliver the very best diesel motorhome experience. Roadmaster's semi-monocoque construction utilizes the most advanced design and engineering to distribute stress evenly throughout the entire chassis, reducing the possibility of twisting and increasing durability and reliability. The Cushion Air Glide suspension system features 10 air bags, eight of which are outboard-mounted, and 10 shock absorbers. The system is supported by the largest ping tanks in the industry. And front and rear disc brakes (drum on the tag axle) provide added security, especially in poor road conditions. It's the ultimate foundation for a luxury ride.

ROADMASTER S-SERIES SEMI-MONOCOQUE CHASSIS

- 1** A 10,000 lb. hitch receiver (or optional 15,000 lb. receiver) offers powerful towing capacity with a 7/4-way trailer plug. Prewired for supplemental braking system that works with your tow vehicle.
- 2** The three-point engine mounting system lowers the coach's center of gravity and reduces the amount of vibration that reaches the coach. The mounting also makes the engine easier to service by allowing the engine to be easily lowered through the bottom of the coach.
- 3** Cummins® ISX 525 HP (or optional 650 HP) engine. The highest power-to-weight ratio in its class. And the patented Variable Geometry Turbocharger (VG Turbo) gives you peak performance at every RPM.
- 4** Allison® 4000 MH 6-Speed Transmission for smooth shifting; our exclusive use of synthetic transmission fluid allows for up to three-year maintenance intervals.
- 5** Full-Cushion Air Glide suspension system positions ten Sachs shocks and ten air bags, eight of which are outboard mounted with auto-leveling for greater stability, a smoother ride and the best handling in its class. Unique three-degree rear axle tilt perfectly aligns the engine, transmission and differential, minimizing stress on the drivetrain and reducing noise in the coach. Automatic Traction Control (ATC) eliminates wheel slippage in slick conditions and heightens control. Tag axle lifts for added maneuverability in tight spots.



- 6** Basement structure rust inhibitor. To prevent corrosion, the basement storage area is constructed with pre-primed steel with rust-inhibiting paint.
- 7** Full-length frame rails fabricated from 3" by 8" by 1/4" 60,000 PSI structural steel; rails are spaced 44" on center for a wider stance and unmatched strength.
- 8** The semi-monocoque design, with trussed superstructure, distributes stress evenly throughout the entire chassis and adds strength to sidewalls and bays.
- 9** Accuride rim with AccuShield coating that cleans easily with soap and water.
- 10** 315/80R/22.5 (front) and 295/80R/22.5 (rear) Goodyear steel-belted all-season tires ensure a safe and quiet ride (G670 RV tire).
- 11** The R.H. Sheppard power steering box allows for a 50-degree front wheel turn angle in both directions for better maneuverability and returns the steering wheel to its center position to eliminate driver fatigue.
- 12** All chassis are equipped with steel cage construction, steel firewall and steel stepwell for added safety.

MULTIPLEX WIRING

Multiplex wiring, used throughout the coach, replaces cumbersome bundles of wire with separate modules. These chassis and house modules communicate via a single wire, making servicing easier and reducing the overall weight of the RV. A service technician can simply hook up a laptop directly to the modules for easy troubleshooting.

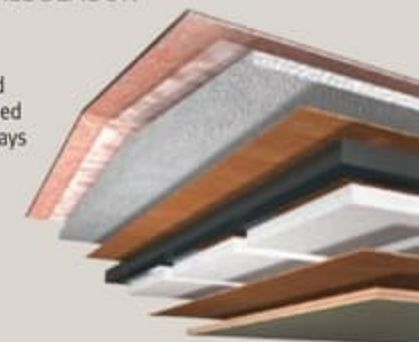


Signature Series offers the gutsy power of a Cummins® ISX 525 HP engine with unbeatable torque at the RPM where you need it most. We'd also like to call your attention to an all-new option for 2010 — the Cummins® ISX-650 HP engine. Power you never dreamed possible.



8-LAYER MOLDED FIBERGLASS ALL-SEASON FOAM INSULATED ROOF

- (top to bottom)
- One-piece 1/4" fiberglass roof is crowned for easy water runoff and seamlessly joined with front and rear caps; non-skid walkways provide added safety and convenience
 - Vapor barrier
 - 3-1/2" tapered bead foam supports the crowned roof; center tunnel houses wiring and air conditioner ducts
 - 1/4" marine grade plywood sheeting
 - Tubular steel framework
 - State-of-the-art foam seals every nook and crevice
 - Luaun and vinyl paneling are Vac-U-Bonded
 - Padded vinyl interior headliner absorbs sound and is easy to clean



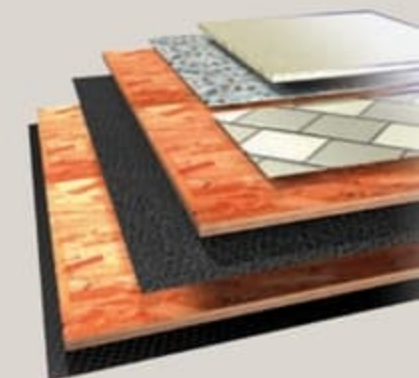
6-LAYER LAMINATED GEL COAT FIBERGLASS SIDEWALLS

- (left to right)
- Decorative wall coverings
 - Luaun paneling; walls are Vac-U-Bonded for added strength
 - Heavy-gauge tubular steel and 4" steel plate backers
 - State-of-the-art foam seals every nook and crevice
 - Luaun paneling
 - Gel coat fiberglass outer wall



5-LAYER FLOORING

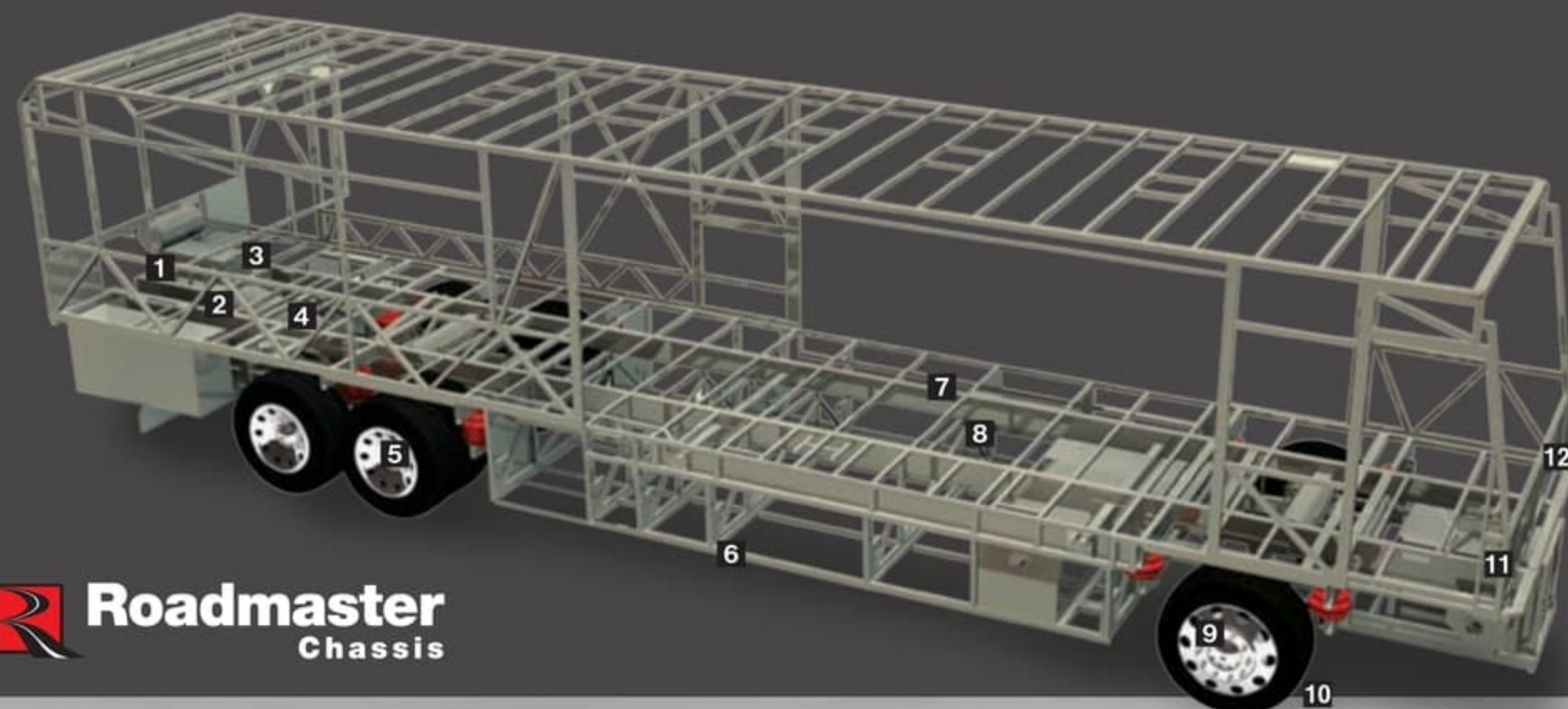
- (top to bottom)
- Tile or 1/2" carpet pad and carpeting
 - OSB flooring provides strength and durability
 - Decibel paper intercepts and dampens road noise
 - OSB flooring
 - Waterproof Darco underbelly provides moisture barrier



IT'S ALL WITHIN REACH.

Oversized items fit easily into the roomy pass-through storage bays. And for easy loading and unloading, a slide-out tray comes standard (an electric tray is optional). Naturally, all compartments are lined, and the insulated side-swung doors feature power locks.





THE DIFFERENCE IS IN THE DETAILS.

Take the wheel of a luxury motorhome, and you're taking the wheel of the chassis it rides on. That's why the Signature Series rides exclusively on a Roadmaster chassis that is custom built to deliver the very best diesel motorhome experience. Roadmaster's semi-monocoque construction utilizes the most advanced design and engineering to distribute stress evenly throughout the entire chassis, reducing the possibility of twisting and increasing durability and reliability. The Cushion Air Glide suspension system features 10 air bags, eight of which are outboard-mounted, and 10 shock absorbers. The system is supported by the largest ping tanks in the industry. And front and rear disc brakes (drum on the tag axle) provide added security, especially in poor road conditions. It's the ultimate foundation for a luxury ride.

ROADMASTER S-SERIES SEMI-MONOCOQUE CHASSIS

- 1** A 10,000 lb. hitch receiver (or optional 15,000 lb. receiver) offers powerful towing capacity with a 7/4-way trailer plug. Prewired for supplemental braking system that works with your tow vehicle.
- 2** The three-point engine mounting system lowers the coach's center of gravity and reduces the amount of vibration that reaches the coach. The mounting also makes the engine easier to service by allowing the engine to be easily lowered through the bottom of the coach.
- 3** Cummins® ISX 525 HP (or optional 650 HP) engine. The highest power-to-weight ratio in its class. And the patented Variable Geometry Turbocharger (VG Turbo) gives you peak performance at every RPM.
- 4** Allison® 4000 MH 6-Speed Transmission for smooth shifting; our exclusive use of synthetic transmission fluid allows for up to three-year maintenance intervals.
- 5** Full-Cushion Air Glide suspension system positions ten Sachs shocks and ten air bags, eight of which are outboard mounted with auto-leveling for greater stability, a smoother ride and the best handling in its class. Unique three-degree rear axle tilt perfectly aligns the engine, transmission and differential, minimizing stress on the drivetrain and reducing noise in the coach. Automatic Traction Control (ATC) eliminates wheel slippage in slick conditions and heightens control. Tag axle lifts for added maneuverability in tight spots.



- 6** Basement structure rust inhibitor. To prevent corrosion, the basement storage area is constructed with pre-primed steel with rust-inhibiting paint.
- 7** Full-length frame rails fabricated from 3" by 8" by 1/4" 60,000 PSI structural steel; rails are spaced 44" on center for a wider stance and unmatched strength.
- 8** The semi-monocoque design, with trussed superstructure, distributes stress evenly throughout the entire chassis and adds strength to sidewalls and bays.
- 9** Accuride rim with AccuShield coating that cleans easily with soap and water.
- 10** 315/80R/22.5 (front) and 295/80R/22.5 (rear) Goodyear steel-belted all-season tires ensure a safe and quiet ride (G670 RV tire).
- 11** The R.H. Sheppard power steering box allows for a 50-degree front wheel turn angle in both directions for better maneuverability and returns the steering wheel to its center position to eliminate driver fatigue.
- 12** All chassis are equipped with steel cage construction, steel firewall and steel stepwell for added safety.

MULTIPLEX WIRING

Multiplex wiring, used throughout the coach, replaces cumbersome bundles of wire with separate modules. These chassis and house modules communicate via a single wire, making servicing easier and reducing the overall weight of the RV. A service technician can simply hook up a laptop directly to the modules for easy troubleshooting.

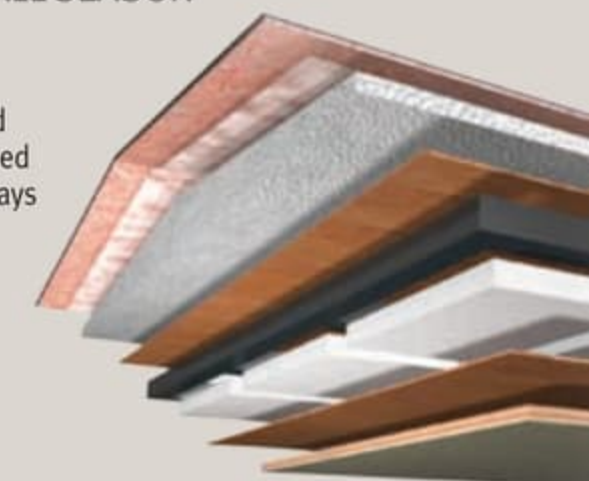


Signature Series offers the gutsy power of a Cummins® ISX 525 HP engine with unbeatable torque at the RPM where you need it most. We'd also like to call your attention to an all-new option for 2010 — the Cummins® ISX-650 HP engine. Power you never dreamed possible.



8-LAYER MOLDED FIBERGLASS ALL-SEASON FOAM INSULATED ROOF

- (top to bottom)
- One-piece 1/4" fiberglass roof is crowned for easy water runoff and seamlessly joined with front and rear caps; non-skid walkways provide added safety and convenience
 - Vapor barrier
 - 3-1/2" tapered bead foam supports the crowned roof; center tunnel houses wiring and air conditioner ducts
 - 1/4" marine grade plywood sheeting
 - Tubular steel framework
 - State-of-the-art foam seals every nook and crevice
 - Luaun and vinyl paneling are Vac-U-Bonded
 - Padded vinyl interior headliner absorbs sound and is easy to clean



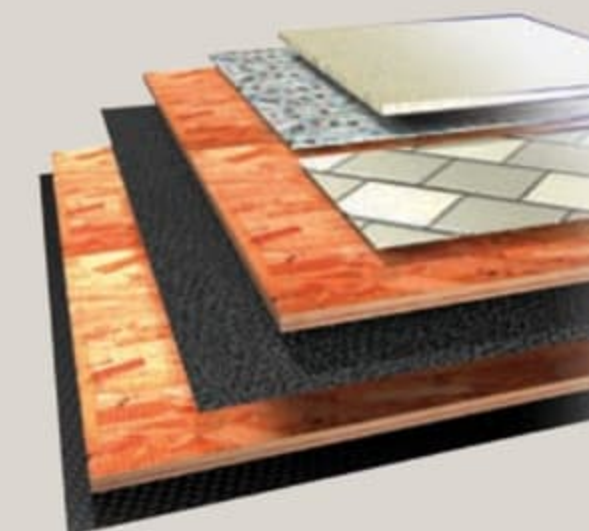
6-LAYER LAMINATED GEL COAT FIBERGLASS SIDEWALLS

- (left to right)
- Decorative wall coverings
 - Luaun paneling; walls are Vac-U-Bonded for added strength
 - Heavy-gauge tubular steel and 4" steel plate backers
 - State-of-the-art foam seals every nook and crevice
 - Luaun paneling
 - Gel coat fiberglass outer wall



5-LAYER FLOORING

- (top to bottom)
- Tile or 1/2" carpet pad and carpeting
 - OSB flooring provides strength and durability
 - Decibel paper intercepts and dampens road noise
 - OSB flooring
 - Waterproof Darco underbelly provides moisture barrier



IT'S ALL WITHIN REACH.

Oversized items fit easily into the roomy pass-through storage bays. And for easy loading and unloading, a slide-out tray comes standard (an electric tray is optional). Naturally, all compartments are lined, and the insulated side-swing doors feature power locks.



STAINED OAK



NATURAL OAK



STAINED CHERRY



NATURAL CHERRY



CLASSIC CHERRY



NATURAL MAPLE



NOW FOR THE HARD PART.

Choosing the Signature Series was easy. Now, it's time to make it your own. For 2009, our designers are pleased to present a stunning array of decors and cabinetry styles, including three breathtaking Ralph Lauren packages. But don't worry. Even if you end up flipping a coin, you always win with Monaco.

BLACK GALAXY



GOLDEN NUGGET



RALPH LAUREN BLACK PEARL



RALPH LAUREN KINGSBRIDGE



RALPH LAUREN WINDERMERE



Carpet A
Dinette B
Sofa C
Bedspread D



Note: Colors depicted are a reasonable representation though they may not be an exact match of the actual colors due to variances in processing and production. See your dealer for actual fabric and paint chip samples.

RALPH LAUREN PACKAGE:

Here's a feast for your senses. Our exclusive Ralph Lauren package offers upgraded features throughout the coach. Because we want your life on the road to be beautiful.

- Exclusive Ralph Lauren Fabrics, Both Living Room and Bedroom
- Upgraded Villa Furniture Featuring 2-Tone Ralph Lauren Fabric/Leather and Villa Dinette Chairs
- Upgraded Galley and Lavatory Faucets
- Upgraded Tumbled Stone Galley/Bath Backsplashes
- Exclusive Fabrica Carpet
- Additional Decorative Pillows in Ralph Lauren Fabrics
- Decorative Lighting
- Detailed Decorative Carved Headboard
- Upgraded Carved Slide-Out Fascia
- Upgraded Wallpaper and Ceiling Treatments
- Black Microwave



STAINED OAK



NATURAL OAK



STAINED CHERRY



NATURAL CHERRY



CLASSIC CHERRY



NATURAL MAPLE



NOW FOR THE HARD PART.

Choosing the Signature Series was easy. Now, it's time to make it your own. For 2009, our designers are pleased to present a stunning array of decors and cabinetry styles, including three breathtaking Ralph Lauren packages. But don't worry. Even if you end up flipping a coin, you always win with Monaco.

BLACK GALAXY



GOLDEN NUGGET



RALPH LAUREN BLACK PEARL



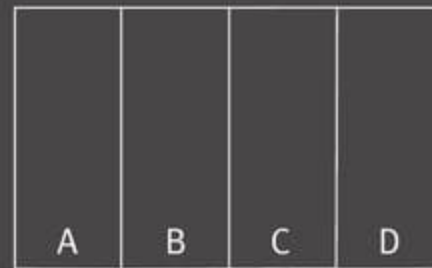
RALPH LAUREN KINGSBRIDGE



RALPH LAUREN WINDERMERE



- Carpet A
- Dinette B
- Sofa C
- Bedspring D



Note: Colors depicted are a reasonable representation though they may not be an exact match of the actual colors due to variances in processing and production. See your dealer for actual fabric and paint chip samples.

RALPH LAUREN PACKAGE:

Here's a feast for your senses. Our exclusive Ralph Lauren package offers upgraded features throughout the coach. Because we want your life on the road to be beautiful.

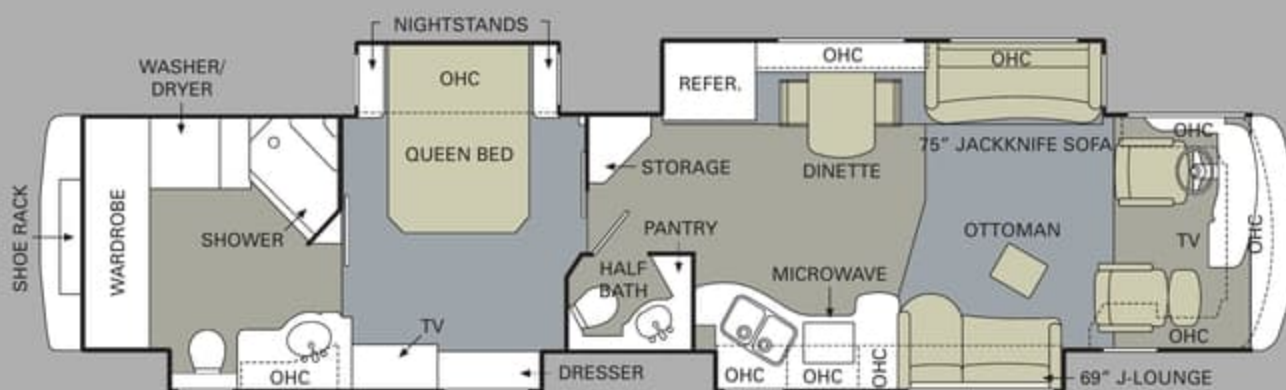
- › Exclusive Ralph Lauren Fabrics, Both Living Room and Bedroom
- › Upgraded Villa Furniture Featuring 2-Tone Ralph Lauren Fabric/Leather and Villa Dinette Chairs
- › Upgraded Galley and Lavatory Faucets
- › Upgraded Tumbled Stone Galley/Bath Backsplashes
- › Exclusive Fabrica Carpet
- › Additional Decorative Pillows in Ralph Lauren Fabrics
- › Decorative Lighting
- › Detailed Decorative Carved Headboard
- › Upgraded Carved Slide-Out Fascia
- › Upgraded Wallpaper and Ceiling Treatments
- › Black Microwave



CHANCELLOR IV



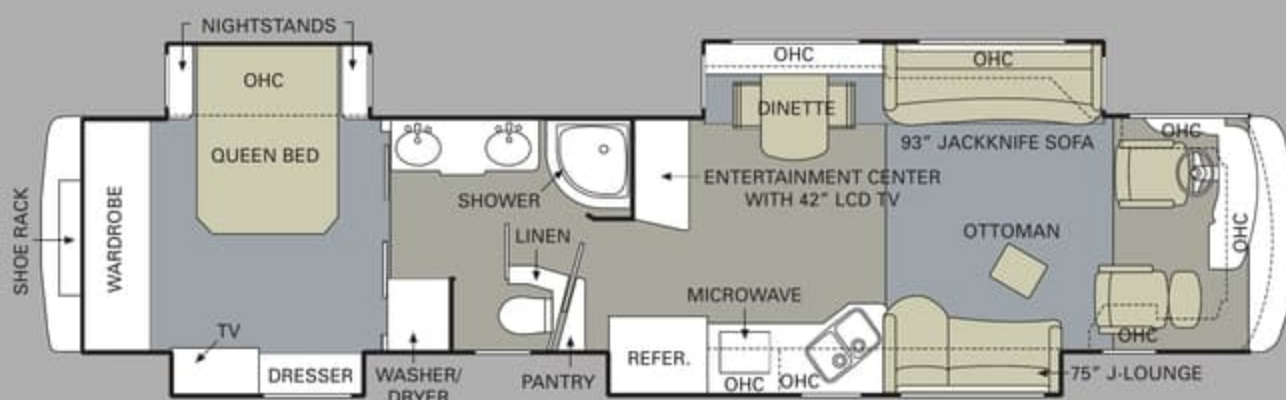
BUCKINGHAM IV



CAMBRIDGE IV

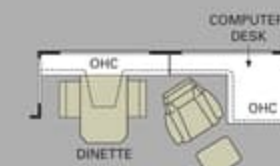


COMMANDER IV



FORTRESS IV

FURNITURE OPTIONS:



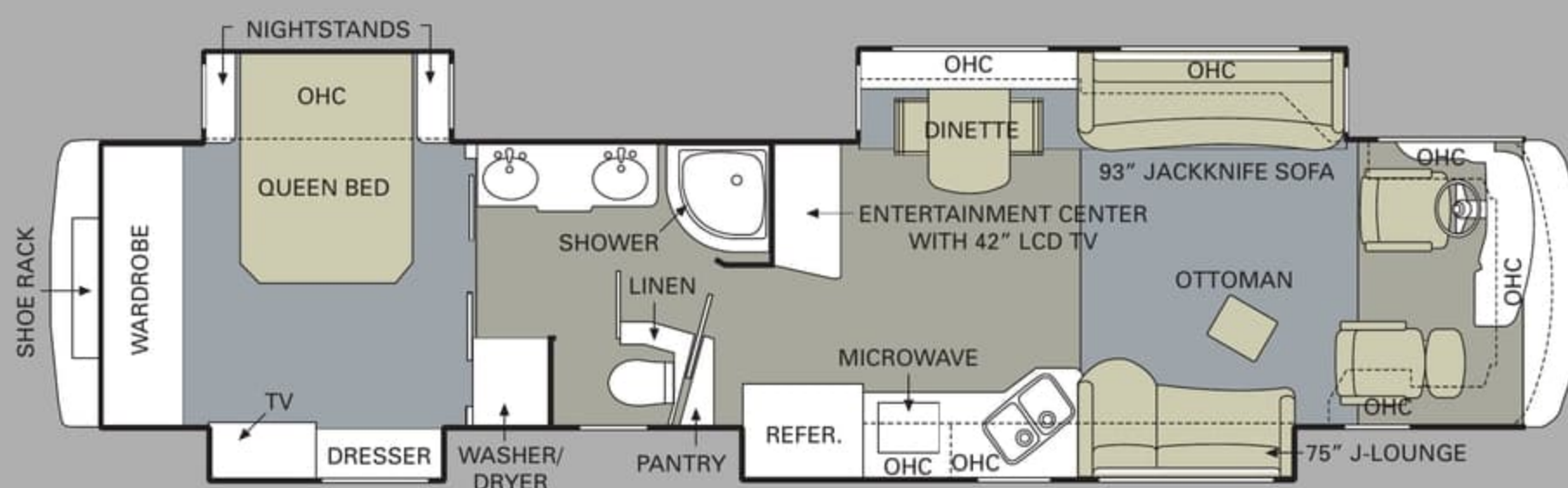
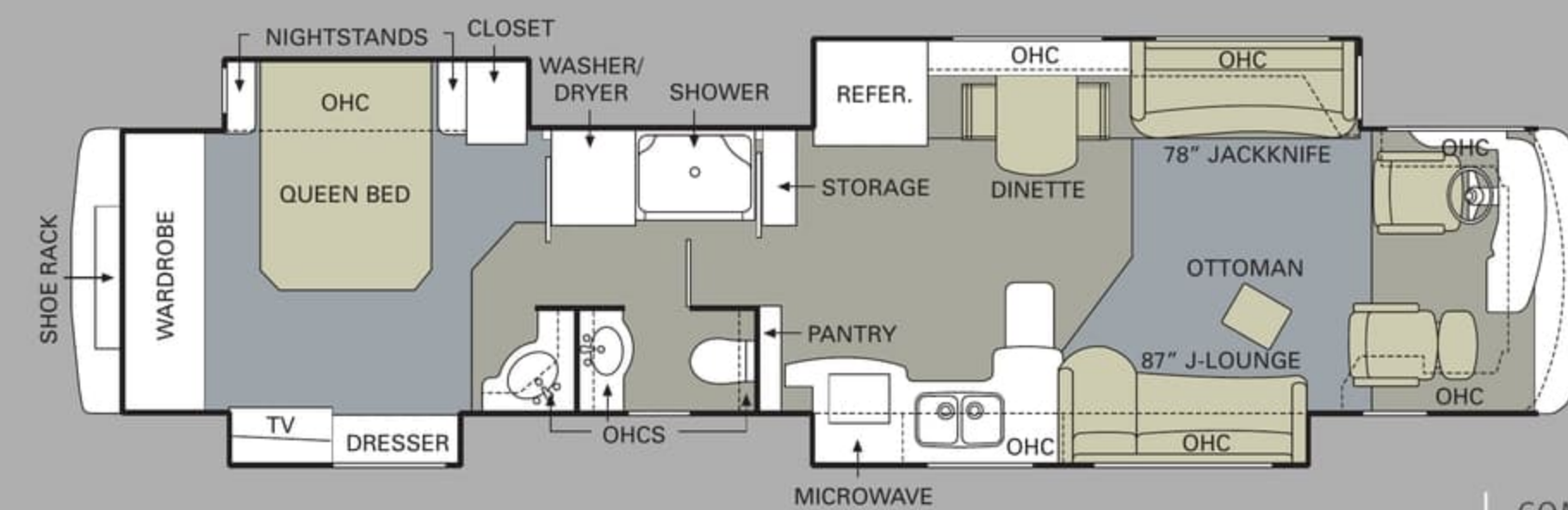
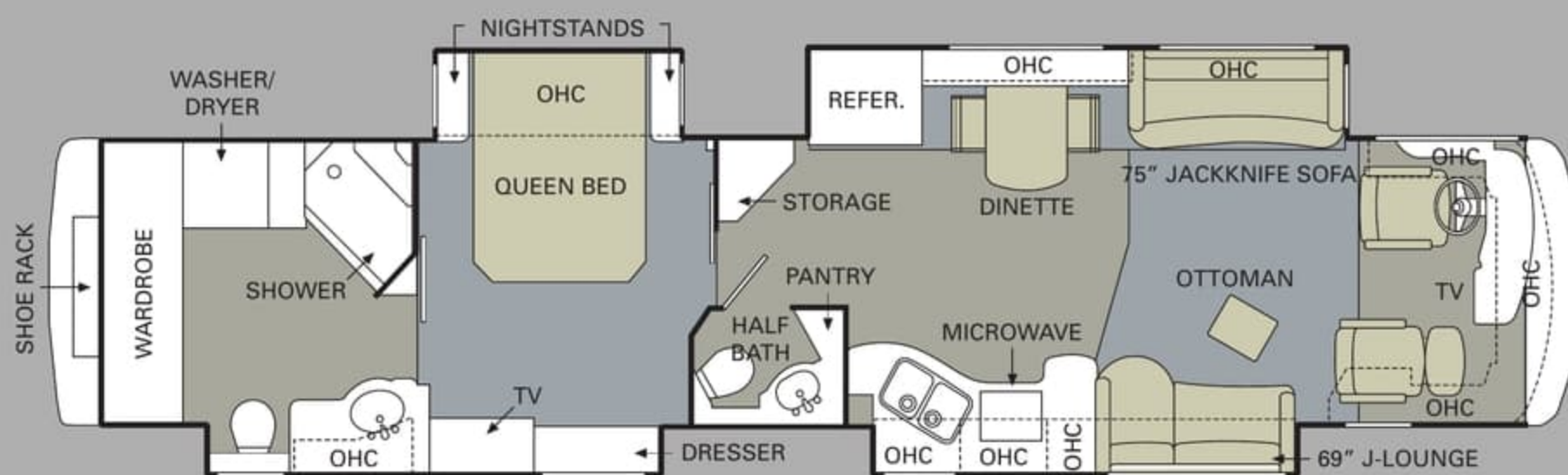
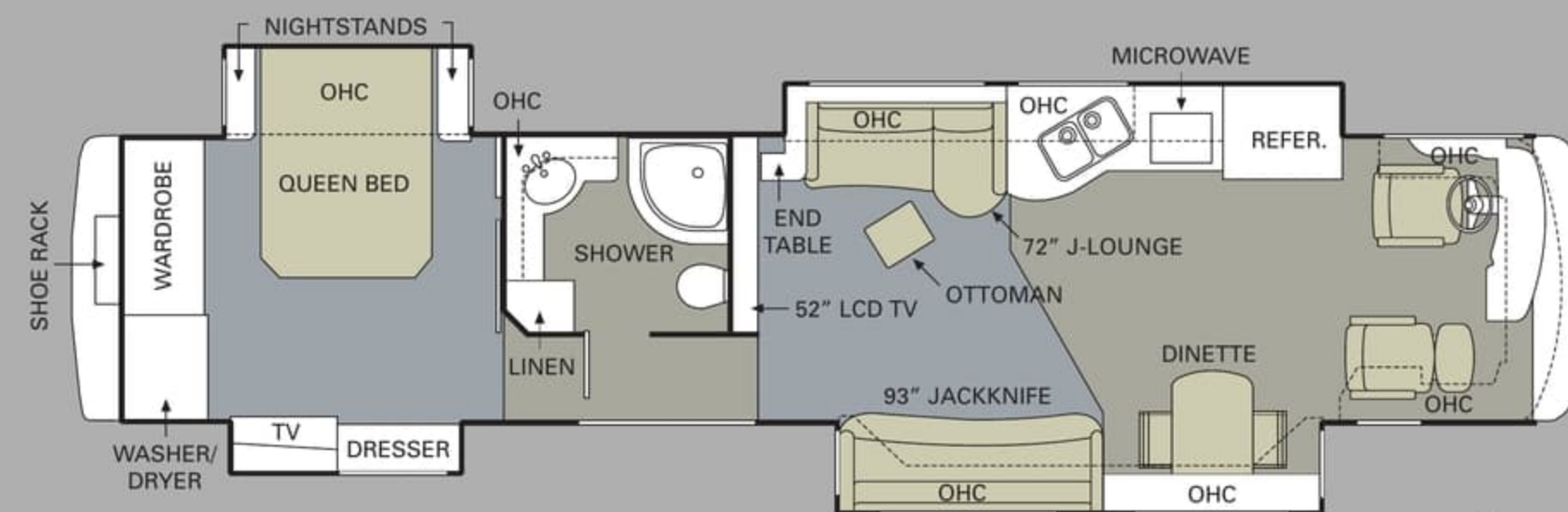
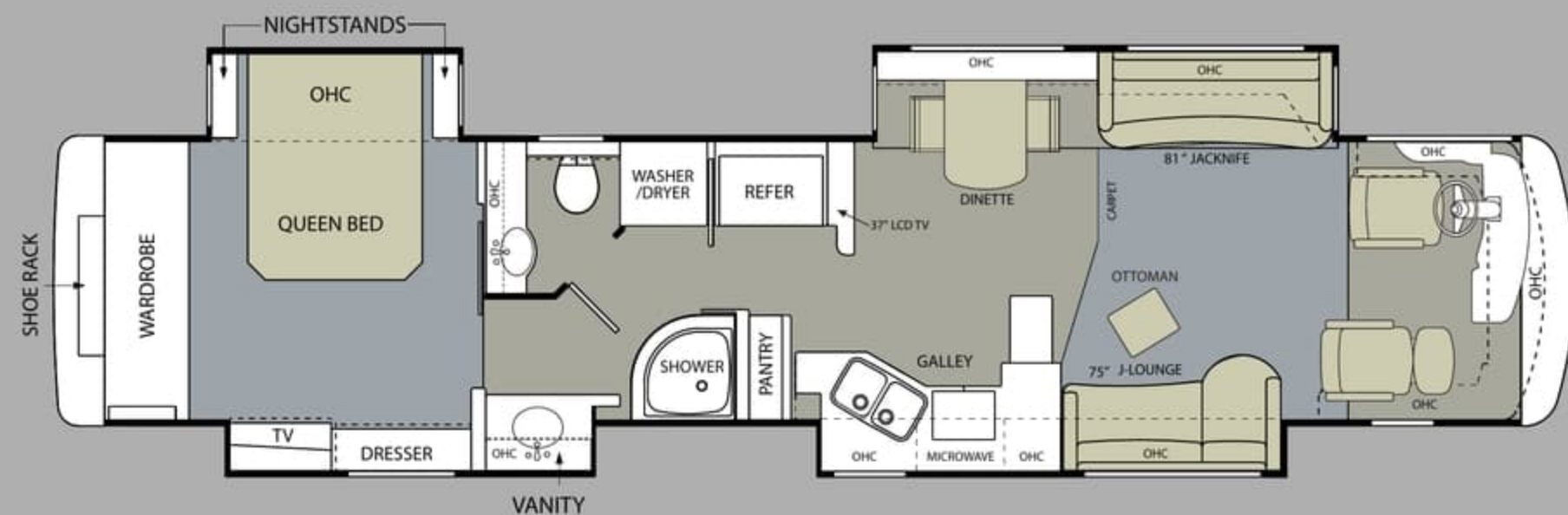
THE VIEW FROM ABOVE.

Kindly take a moment to glance at some of the most spacious, refined motorhome floorplans ever designed. Highlights of the Signature Series include a private bath in the rear of the Cambridge IV, along with a half-bath off the living area. You'll also find a spectacular 42" LCD television on most floorplans (52" on the Buckingham IV).

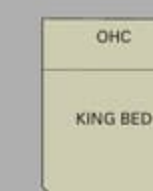
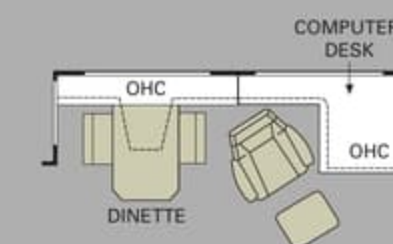
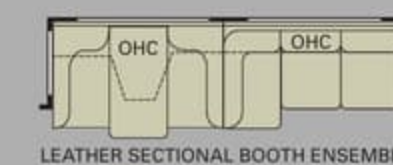
ALL ROADS LEAD TO WWW.MONACOCOACH.COM.

Wherever the road takes you, you're never more than a click away from your friends at Monaco. Just go to www.monacocoach.com for all the latest product news, club dates and destinations, a dealer locator function, and factory tour information. You can also e-mail us directly through the site at any time.





FURNITURE OPTIONS:



THE VIEW FROM ABOVE.

Kindly take a moment to glance at some of the most spacious, refined motorhome floorplans ever designed. Highlights of the Signature Series include a private bath in the rear of the Cambridge IV, along with a half-bath off the living area. You'll also find a spectacular 42" LCD television on most floorplans (52" on the Buckingham IV).

ALL ROADS LEAD TO WWW.MONACOCOACH.COM.

Wherever the road takes you, you're never more than a click away from your friends at Monaco. Just go to www.monacocoach.com for all the latest product news, club dates and destinations, a dealer locator function, and factory tour information. You can also e-mail us directly through the site at any time.



Due to continuous product improvement, please see the website for the latest in standards and options, specifications, and technical data. Go to www.monacocoach.com.

Weight Ratings (Lbs.)	Weight Ratings (Lbs.)					Measurements	Measurements					Tank Capacity (Gal.) ¹				
	Gross Vehicle	Gross Combined ²	Front Gross Axle	Rear Gross Axle	Tag Axle		Wheelbase	Overall Length	Overall Height (with A/O (add 5" for satellite option))	Interior Height	Interior Width	Exterior Width	Gray Tank	Black Tank	Fresh Tank	LP Tank ³
Chancellor IV	50,300	60,300	15,300	23,000	12,000	268"	43' 11"	12' 8"	84"	96"	100.5"	72	40	100	25	150
Cambridge IV	50,300	60,300	15,300	23,000	12,000	280"	44' 11"	12' 8"	84"	96"	100.5"	72	40	100	25	150
Fortress IV	50,300	60,300	15,300	23,000	12,000	280"	44' 11"	12' 8"	84"	96"	100.5"	72	40	100	25	150
Buckingham IV	50,300	60,300	15,300	23,000	12,000	280"	44' 11"	12' 8"	84"	96"	100.5"	72	40	100	25	150
Commander IV	50,300	60,300	15,300	23,000	12,000	280"	44' 11"	12' 8"	84"	96"	100.5"	72	40	100	25	150

¹Towing capacity is limited by GCWR; your vehicle's towing capacity is the difference between the GCWR and the actual vehicle weight, including all water, fuel, passengers and cargo. Your towed vehicle should be equipped with auxiliary brakes if the weight of the towed vehicle exceeds 1,000 lbs. Consult your owner's manual for further towing information.

²All tank capacities are estimated based upon calculations provided by the tank manufacturers and represent approximate capacities. The actual "usable capacity" may be greater or less than the estimated capacities based upon fabrication and installation of the tanks.

³Actual filled LP capacity is 80% of listing due to safety shut-off required on tank.

The actual overall length of the recreational vehicle may differ from that indicated in the brochure due to variances in the manufacturing process and/or installed components. The actual length may be greater or less than that indicated. Due to the large variety of options and floorplan arrangements available to our customers, actual weights for each unit can differ significantly. Monaco provides a weight sticker on each unit we produce which includes that unit's tank capacities and approximate weight. Consult your local Monaco dealer for unit availability and further information. The information printed in this brochure reflects product design, fabrication, and component parts at the date of printing. The manufacturer reserves the right, at any time, to make changes in product design or material or component specifications

as its sole option, without notice. This includes the substitution of components of a different brand or trade name which will result in comparable performance. All information printed in this brochure is subject to change after the date of printing. Some features shown or mentioned in this brochure are optional and may only be available in selected floorplans. Photographs may depict a floorplan option that has been discontinued or is no longer available at the time of your purchase. Photographs may show props or decorations that are not standard equipment. Monaco, the Monaco logo and its design, are registered trademarks. Other products and company names are trademarks and/or registered trademarks of their respective holders. While the color of the motorhome's exterior and the interior fabrics depicted in this sales brochure are fair and

reasonable depictions, the colors depicted may not be an exact match of the actual colors because of the variances in photo-processing and printing. Due to product improvements, changes during the model year and/or transcription errors that may occur, information represented within this brochure may not be accurate at the time of your purchase. If certain information is significant to your purchasing decision, please confirm the information with your dealer. Component part and appliance manufacturers issue limited warranties covering portions of the recreational vehicle not covered under the Limited Warranties issued by Monaco RV, LLC. To learn specific details regarding warranty coverage, please contact your selling dealership or review the warranty packet inside the recreational vehicle.

BODY CONSTRUCTION

- Heavy-Duty Steel Superstructure with Steel Cage Cockpit Construction
- Seamless One-Piece Molded Crowned Fiberglass Roof
- All-Season Foam Insulated Roof
- Laminated Gel Coat Fiberglass Walls
- Five-Layer Flooring with Two Layers OSB Flooring
- Deluxe Full-Body Paint
- Panaview™ 1-Piece Front Windshield
- Double-Head Power-Controlled Heated Chrome Exterior Mirrors with Integrated Cameras
- Halogen Fog Lamps
- Daytime Running Lights

- Recessed Side Docking Lights
- Dual Trumpet Air Horns
- Entry Step Storage
- Insulated Aluminum Baggage Doors with Power Locks
- Narrow Slide Out T-Molding Design
- Lined Pass-Through Storage Compartments
- Interlocking Aluminum Framed Slide-Out Houses
- Storage Bay Slide-Out Tray (Full Pass-Through)
- Rear Ladder
- Monaco Full-Length Mud Flap with Stainless Steel Logo
- 3M Film Front Mask

OPTIONS

- Electric Slide-Out Storage Tray (Complete Pass-Through)

CHASSIS/ENGINE/SUSPENSION

- Roadmaster S-Series: Semi-Monocoque Chassis
- Multiplex Chassis Wiring
- Cummins® ISX-525 HP Engine with Allison® 4000 MH 6-Speed World Transmission and Electronic Shifter
- Torque: (@ 1200 RPM) 1,650 lbs./ft. Max. Net
- Engine Displacement: 912"/15.0L
- Dual Fuel Fill
- 270 Amp Alternator
- Rear Axle Ratio: 4.33:1
- Rear Tires: 295/80R/22.5
- Front Tires: 315/80R/22.5
- Polished Aluminum Wheels
- Power Adjustable Steering Column

- Full-Cushion Air Glide Suspension with Ten Air Bags, Eight of Which Are Outboard Mounted, and Ten Sachs Shock Absorbers
- Air Suspension with Ping Tank
- Automatic Traction Control
- Air Disc Brake System with ABS on Front and Rear
- Tag Axle with Anti-Lock Braking System and Drum
- Two-Stage Jacobs Engine Brake
- Prewire for Supplemental Braking System
- Engine Block Heater with Switch on Dash
- Sachs Shocks
- Automatic Air Leveling System
- 10,000 Lb. Hitch Receiver and 7/4-Way Trailer Plug

OPTIONS

- Cummins® ISX 650 HP Engine with Allison® 4000 MH 6-Speed World Transmission and Electronic Shifter, Torque: 1950 lbs./ft.; 912" Engine Displacement
- Electronic Adjustable Suspension System
- Hydraulic Leveling System (Replaces Air Leveling)
- Tire Pressure and Temperature Monitoring System
- 15,000 Lb. Hitch with Non-Liftable Tag When Tow Vehicle Is Hooked Up
- Dual Leveling System (Air/Hydraulic)

COCKPIT

- In-Dash Touch-Screen Stereo with AM/FM Radio, Multi-Disc CD Changer and Integrated GPS
- 2-Tone Dash Design with Burl Panels Medallion M3 Multiplex Gauges and Light Bar/Message Center
- 3-Camera Color Rear Vision System with Outside Temperature Display on Rear Vision Monitor
- CB Radio Prep (Cable and Antenna)
- Power Cockpit Window Blinds (Cockpit Only)
- Power Front Sunvisors

- Pilot and Co-Pilot Side Window Manual Sunscreens
- Power Driver Side Window
- Adjustable Brake and Accelerator Pedals
- Lighted VIP Smartwheel® with Controls for Windshield Wiper System, ICC and Cruise Control
- Leather Pilot and Co-Pilot Seats with 6-Way Power Adjustments/Heated/Integrated 3-Point Seatbelts/Adjustable Armrests, Electric Headrests; Power Footrest on Co-Pilot Seat; Electric Sliding Seat Cushion

- Audible Turn Signals
- Carpeted Driver and Passenger Floor Mats

OPTIONS

- Bluetooth® HandsFreeLink® in Cockpit
- CB Radio
- XM Satellite Stereo (Requires Subscription)
- Sirius Satellite Radio System (Requires Subscription)

APPLIANCES AND ACCESSORIES

- 17 Cu. Ft. Four-Door Refrigerator with Raised Panel Doors
- Recessed High-Output 2-Burner Cooktop with Flush-Mounted Covers
- Spacesaver Convection Microwave with Touch Control
- Electric TV Antenna
- KVH R5 In-Motion Digital Satellite System (Receivers Not Included)
- 42" LCD TV Fixed in Living Area Overhead (Cambridge IV and Commander IV)
- 42" LCD TV Mounted in Entertainment Center behind Dinette Area (Fortress IV Only)
- 52" LCD TV in Living Area (Buckingham IV Only)
- 37" LCD TV Mounted in Entertainment Center behind Dinette Area (Chancellor IV Only)
- 32" LCD TV in Bedroom
- Bose® Sound System with DVD Player and Surround Sound Speakers
- Bedroom DVD Player
- Universal Remote System for Living Area TV
- Combination Washer/Dryer

- AV Component Cabinet with ABS Face Cover
- Monitor in Bedroom for Exterior Security Cameras

OPTIONS

- Residential Refrigerator with 4 Additional House Batteries
- Blu-Ray Disc® Package (Living Room TV and DVD Player)
- Stainless Steel Refrigerator
- Stack Washer/Dryer
- Central Vacuum System (Toe Kick Vacuum in Pantry Base)
- Dishwasher Drawer
- 42" Swing-Down LCD TV Mounted in Living Area Ceiling (Chancellor IV, Cambridge IV and Commander IV Only)

- 26" LCD TV in Living Area Overhead (Chancellor IV, Fortress IV and Buckingham IV Only)
- Bose® Wave Radio in Bedroom
- KVH R6 In-Motion Digital Satellite System (Receivers Not Included)
- Multi-Satellite HD KU/KA Dish (Receivers Not Included)
- Exterior 26" LCD TV with DVD Player
- Drop-Down Exterior 32" LCD TV with DVD Player (N/A: Buckingham IV)

Due to continuous product improvement, please see the website for the latest in standards and options, specifications, and technical data. Go to www.monacocoach.com.

Weight Ratings (Lbs.)	Weight Ratings (Lbs.)					Measurements	Measurements					Tank Capacity (Gal.) ²				
	Gross Vehicle	Gross Combined ¹	Front Gross Axle	Rear Gross Axle	Tag Axle		Wheelbase	Overall Length	Overall Height (with A/C) (add 5" for satellite option)	Interior Height	Interior Width	Exterior Width	Gray Tank	Black Tank	Fresh Tank	LP Tank ³
Chancellor IV	50,300	60,300	15,300	23,000	12,000	268"	43' 11"	12' 8"	84"	96"	100.5"	72	40	100	25	150
Cambridge IV	50,300	60,300	15,300	23,000	12,000	280"	44' 11"	12' 8"	84"	96"	100.5"	72	40	100	25	150
Fortress IV	50,300	60,300	15,300	23,000	12,000	280"	44' 11"	12' 8"	84"	96"	100.5"	72	40	100	25	150
Buckingham IV	50,300	60,300	15,300	23,000	12,000	280"	44' 11"	12' 8"	84"	96"	100.5"	72	40	100	25	150
Commander IV	50,300	60,300	15,300	23,000	12,000	280"	44' 11"	12' 8"	84"	96"	100.5"	72	40	100	25	150

¹Towing capacity is limited by GCWR; your vehicle's towing capacity is the difference between the GCWR and the actual vehicle weight, including all water, fuel, passengers and cargo. Your towed vehicle should be equipped with auxiliary brakes if the weight of the towed vehicle exceeds 1,000 lbs. Consult your owner's manual for further towing information.

²All tank capacities are estimated based upon calculations provided by the tank manufacturers and represent approximate capacities. The actual "usable capacity" may be greater or less than the estimated capacities based upon fabrication and installation of the tanks.

³Actual filled LP capacity is 80% of listing due to safety shut-off required on tank.

The actual overall length of the recreational vehicle may differ from that indicated in the brochure due to variances in the manufacturing process and/or installed components. The actual length may be greater or less than that indicated. Due to the large variety of options and floorplan arrangements available to our customers, actual weights for each unit can differ significantly. Monaco provides a weight sticker on each unit we produce which includes that unit's tank capacities and approximate weight. Consult your local Monaco dealer for unit availability and further information. The information printed in this brochure reflects product design, fabrication, and component parts at the date of printing. The manufacturer reserves the right, at any time, to make changes in product design or material or component specifications

as its sole option, without notice. This includes the substitution of components of a different brand or trade name which will result in comparable performance. All information printed in this brochure is subject to change after the date of printing. Some features shown or mentioned in this brochure are optional and may only be available in selected floorplans. Photographs may depict a floorplan option that has been discontinued or is no longer available at the time of your purchase. Photographs may show props or decorations that are not standard equipment. Monaco, the Monaco logo and its design, are registered trademarks. Other products and company names are trademarks and/or registered trademarks of their respective holders. While the color of the motorhome's exterior and the interior fabrics depicted in this sales brochure are fair and

reasonable depictions, the colors depicted may not be an exact match of the actual colors because of the variances in photo-processing and printing. Due to product improvements, changes during the model year and/or transcription errors that may occur, information represented within this brochure may not be accurate at the time of your purchase. If certain information is significant to your purchasing decision, please confirm the information with your dealer. Component part and appliance manufacturers issue limited warranties covering portions of the recreational vehicle not covered under the Limited Warranties issued by Monaco RV, LLC. To learn specific details regarding warranty coverage, please contact your selling dealership or review the warranty packet inside the recreational vehicle.

BODY CONSTRUCTION

- › Heavy-Duty Steel Superstructure with Steel Cage Cockpit Construction
- › Seamless One-Piece Molded Crowned Fiberglass Roof
- › All-Season Foam Insulated Roof
- › Laminated Gel Coat Fiberglass Walls
- › Five-Layer Flooring with Two Layers OSB Flooring
- › Deluxe Full-Body Paint
- › Panaview™ 1-Piece Front Windshield
- › Double-Head Power-Controlled Heated Chrome Exterior Mirrors with Integrated Cameras
- › Halogen Fog Lamps
- › Daytime Running Lights

- › Recessed Side Docking Lights
- › Dual Trumpet Air Horns
- › Entry Step Storage
- › Insulated Aluminum Baggage Doors with Power Locks
- › Narrow Slide Out T-Molding Design
- › Lined Pass-Through Storage Compartments
- › Interlocking Aluminum Framed Slide-Out Houses
- › Storage Bay Slide-Out Tray (Full Pass-Through)
- › Rear Ladder
- › Monaco Full-Length Mud Flap with Stainless Steel Logo
- › 3M Film Front Mask

OPTIONS

- › Electric Slide-Out Storage Tray (Complete Pass-Through)

CHASSIS/ENGINE/SUSPENSION

- › Roadmaster S-Series: Semi-Monocoque Chassis
- › Multiplex Chassis Wiring
- › Cummins® ISX-525 HP Engine with Allison® 4000 MH 6-Speed World Transmission and Electronic Shifter
- › Torque: (@ 1200 RPM) 1,650 lbs./ft. Max. Net
- › Engine Displacement: 912"/15.0L
- › Dual Fuel Fill
- › 270 Amp Alternator
- › Rear Axle Ratio: 4.33:1
- › Rear Tires: 295/80R/22.5
- › Front Tires: 315/80R/22.5
- › Polished Aluminum Wheels
- › Power Adjustable Steering Column

- › Full-Cushion Air Glide Suspension with Ten Air Bags, Eight of Which Are Outboard Mounted, and Ten Sachs Shock Absorbers
- › Air Suspension with Ping Tank
- › Automatic Traction Control
- › Air Disc Brake System with ABS on Front and Rear
- › Tag Axle with Anti-Lock Braking System and Drum
- › Two-Stage Jacobs Engine Brake
- › Rewire for Supplemental Braking System
- › Engine Block Heater with Switch on Dash
- › Sachs Shocks
- › Automatic Air Leveling System
- › 10,000 Lb. Hitch Receiver and 7/4-Way Trailer Plug

OPTIONS

- › Cummins® ISX 650 HP Engine with Allison® 4000 MH 6-Speed World Transmission and Electronic Shifter, Torque: 1950 lbs./ft.; 912" Engine Displacement
- › Electronic Adjustable Suspension System
- › Hydraulic Leveling System (Replaces Air Leveling)
- › Tire Pressure and Temperature Monitoring System
- › 15,000 Lb. Hitch with Non-Liftable Tag When Tow Vehicle Is Hooked Up
- › Dual Leveling System (Air/Hydraulic)

COCKPIT

- › In-Dash Touch-Screen Stereo with AM/FM Radio, Multi-Disc CD Changer and Integrated GPS
- › 2-Tone Dash Design with Burl Panels Medallion M3 Multiplex Gauges and Light Bar/Message Center
- › 3-Camera Color Rear Vision System with Outside Temperature Display on Rear Vision Monitor
- › CB Radio Prep (Cable and Antenna)
- › Power Cockpit Window Blinds (Cockpit Only)
- › Power Front Sunvisors

- › Pilot and Co-Pilot Side Window Manual Sunscreens
- › Power Driver Side Window
- › Adjustable Brake and Accelerator Pedals
- › Lighted VIP Smartwheel® with Controls for Windshield Wiper System, ICC and Cruise Control
- › Leather Pilot and Co-Pilot Seats with 6-Way Power Adjustments/Heated/Integrated 3-Point Seatbelts/Adjustable Armrests, Electric Headrests; Power Footrest on Co-Pilot Seat; Electric Sliding Seat Cushion

- › Audible Turn Signals
- › Carpeted Driver and Passenger Floor Mats

OPTIONS

- › Bluetooth® HandsFreeLink® in Cockpit
- › CB Radio
- › XM Satellite Stereo (Requires Subscription)
- › Sirius Satellite Radio System (Requires Subscription)

APPLIANCES AND ACCESSORIES

- › 17 Cu. Ft. Four-Door Refrigerator with Raised Panel Doors
- › Recessed High-Output 2-Burner Cooktop with Flush-Mounted Covers
- › Spacesaver Convection Microwave with Touch Control
- › Electric TV Antenna
- › KVH R5 In-Motion Digital Satellite System (Receivers Not Included)
- › 42" LCD TV Fixed in Living Area Overhead (Cambridge IV and Commander IV)
- › 42" LCD TV Mounted in Entertainment Center behind Dinette Area (Fortress IV Only)
- › 52" LCD TV in Living Area (Buckingham IV Only)
- › 37" LCD TV Mounted in Entertainment Center behind Dinette Area (Chancellor IV Only)
- › 32" LCD TV in Bedroom
- › Bose® Sound System with DVD Player and Surround Sound Speakers
- › Bedroom DVD Player
- › Universal Remote System for Living Area TV
- › Combination Washer/Dryer

- › AV Component Cabinet with ABS Face Cover
- › Monitor in Bedroom for Exterior Security Cameras

OPTIONS

- › Residential Refrigerator with 4 Additional House Batteries
- › Blu-Ray Disc® Package (Living Room TV and DVD Player)
- › Stainless Steel Refrigerator
- › Stack Washer/Dryer
- › Central Vacuum System (Toe Kick Vacuum in Pantry Base)
- › Dishwasher Drawer
- › 42" Swing-Down LCD TV Mounted in Living Area Ceiling (Chancellor IV, Cambridge IV and Commander IV Only)

- › 26" LCD TV in Living Area Overhead (Chancellor IV, Fortress IV and Buckingham IV Only)
- › Bose® Wave Radio in Bedroom
- › KVH R6 In-Motion Digital Satellite System (Receivers Not Included)
- › Multi-Satellite HD KU/KA Dish (Receivers Not Included)
- › Exterior 26" LCD TV with DVD Player
- › Drop-Down Exterior 32" LCD TV with DVD Player (N/A: Buckingham IV)

INTERIOR

- Stained or Natural Oak Cabinetry
- Dinette Wall Cabinet with Solid Surface Top
- Built-In Storage Area for Kitchen Countertop Covers
- Bedroom Dresser with Raised Panel Drawer Faces
- Clothing Hamper in Bedroom
- Low-Friction Roller Drawer Guides
- Radiused Ceiling Design with Accents in Living Room and Bedroom
- High-Gloss Corian® Countertops Throughout
- Integrated Sinks in Vanity and Galley
- Mosaic Tile Shower Design
- Mosaic Tile Galley Backsplash Design
- Mosaic Tile Vanity Backsplash Design
- Corian® Countertop Shelf at Living Room Side of Kitchen Countertop
- Power Vienna Shades in Living Room and Dining Area
- Day/Night Shades with Blackouts in Bedroom
- Designer Vinyl Wallpaper Throughout
- Foss Lined Wardrobes
- Two-Tiered Silverware Drawer Divider
- Pullout Trash Can next to Two Pullout Shelves in Lower Galley Cabinet
- Hardwood Drawer under Bed
- Designer Textured Carpet in Living Area and Bedroom
- High-Gloss Tile Floors in Galley and Bath
- High-Gloss Tile Flooring in Cockpit Area
- Raised Panel Door for Private Bath
- Bedsprad and Pillows
- Nightstands with Corian® Countertops
- Corian® Windowsills in Living Area
- New Brushed Bronze or Satin Nickel Cabinet Hardware and Faucets Throughout
- Decorative Hardwood Headboard
- Decorative Hardwood Slide-Out Fascia
- Etched Refrigerator Wall Mirror (Commander IV Only)
- Decorative Window Valance Treatments with Wood Carving and Inlaid Laminate

OPTIONS

- Interior Decors: Golden Nugget, Black Galaxy
- Ralph Lauren Decors: Black Pearl, Windermere, Kingsbridge
- Natural Maple, and Natural, Stained or Classic Cherry Cabinetry
- Central Vacuum Parts Storage Tray under Bed When Central Vacuum Is Optioned
- Full-Wall Living Room Valance Option
- Ceiling Fan in Bedroom
- Sculptured Carpet Design in Living Room
- Full-Tile Living Room Floor
- Area Rugs in Living Room and Galley (with Full Tile Option)
- Under-Mounted Glass Sink in Vanity
- Above Counter Sink (Ralph Lauren Decor Package Only)

PLUMBING AND LP SYSTEMS

- Central Water Purifier in Service Compartment
- Manabloc Water System for Entire Coach
- Super Service Center with Insulated Systems Compartment with Easy Access to Hook-Up
- Water Pump Switch in Galley, Bathroom and Service Bay
- Winterization Valving System
- China Toilet
- Corian® Shower with Tile Accents and Shower Caddy
- Shower Head Shut-Off
- RV Sani-Con Tank Drainage System
- Black Holding Tank Rinsing System
- Outside Faucet with Hot and Cold Water
- Power Water Hose Reel
- Soap Dispenser in Kitchen
- Insta-Hot® Water System in Kitchen

OPTIONS

- Bathtub (N/A Chancellor IV)

HEATING, VENTS AND AIR CONDITIONING

- Aqua-Hot® Heating System
- Three Low-Profile Ducted 15M BTU Roof Air Conditioners with Wall Thermostat and Heat Pump
- Electronic AC/Heat Climate Control System
- Center Defroster Vents
- 12V Attic Fan with Wall Thermostat in Private Lavatory and Galley
- Horizontal Louvered Vents/Grills in Vanity, Lavatory Vanity, under Dash and Wardrobe

OPTIONS

- Galley Low-Profile 120V Baseboard Heater. (N/A with Radiant Floor Heating)
- Radiant Floor Heating in Living Area, Galley and Bath

FURNITURE

- Legless Side-Slide Solid Surface Dinette Table with Two Freestanding Dinette Chairs
- Roadside: Fabric Sleeper Sofa
- Curbside: Leather J-Lounge with Drawer and Ottoman with Storage
- Queen Bed with Pillowtop-Hinged Mattress

OPTIONS (Living Area Furniture Location is Floorplan Dependent)

- King Bed (72" x 80")
- Queen Air Mattress with Digital Remote
- King Air Mattress with Digital Remote
- Dinette Side: Leather Euro-Recliner with Ottoman
- Roadside: Glider Recliner with Ottoman
- Leather Sleeper Sofa with Drawer and Ottoman with Storage
- Laptop Style Computer Desk with Leather Euro-Recliner and Ottoman
- Leather Hide-A-Bed and Ottoman with Storage
- Leather Hide-A-Bed with Air Mattress and Ottoman with Storage
- Fabric/Leather Sectional Booth Dinette Ensemble
- Two Folding Chairs with Sectional Booth Dinette Ensemble

WINDOWS, DOORS AND AWNINGS

- Flush-Mounted Radius Dual Pane Safety Glass Dark Tinted Windows
- Front Entry Door with Air Seal and Removable Top Screen
- Keyless Remote Entry System with Pocket Remote
- Girard® Front Door Awning
- Topper Slide-Out Awnings All Houses
- Carefree® Manual Window Awnings
- Roof-Mounted Girard® Automatic Front Patio Awning
- Tinted Skylight in Bathroom (Protecta Glaze)

OPTIONS

- Roof-Mounted Girard® Automatic Rear Patio Awning (Includes 2nd Patio Light with Option)
- Girard® Window Awnings on All Slide-Out House Windows (except Private Lavatory Window)

ELECTRICAL SYSTEMS AND LIGHTS

- 50 Amp 120/240V Distribution Panel in Cockpit Overhead
- Power Cord Reel
- Onan® 12.5 kW QD Generator on Power Slide-Out Tray with Auxiliary Start Switch and Automatic Temperature Start
- 2,800 Watt Pure Sine Wave Inverter with Auto Gen Start and Auto Temp Start
- Halogen Map Lights above Driver/ Passenger Seating
- Accent Rope Lighting Throughout Coach
- Lighted Utility Center
- Underhood Utility Light
- 120V Outlet in Private Bath, Bed Base and Inside Storage Compartments
- Lights in Outside Storage Compartments
- Four 6V House Batteries
- Two 12V Chassis Batteries (Three with ISX-650 Engine Option)
- Surge Guard Automatic Transfer Switch
- Multiplex 12V Wiring for Dash and Throughout Interior of Coach
- 100 Watt Solar Panel
- Decorative Lighting Throughout
- Cosmetic Vanity Lights in Bathroom
- Halogen Lighting in Ceiling Throughout
- Doorbell
- Pin Light in Galley under Sink Storage
- 12" Porch Light
- Dimmer Switches for Vanity Overhead Lights
- Battery Maintainer Charges Chassis and House Batteries
- Battery Disconnect Switch inside Coach with 2-Second Timer
- Power Slide-Out Generator Tray
- Battery Boost Switch
- Electronic Controls in Cockpit Passenger Overhead
- Touch Pad Switch Plates with Multiplex Wiring
- Rope Lighting in Living Room and Bedroom Valances, under Galley and Bedroom Toe Kicks
- Courtesy Lighting in Stepwell
- Magnetic Switch in Wardrobe Doors for Wardrobe Light
- Front and Rear Electrical Run Boxes

OPTIONS

- Glass Matt Batteries (Replaces House and Chassis Batteries)
- Curbside Accent Patio Lighting on Underside of Slide-Outs (N/A Buckingham IV)

SAFETY

- Backup Alarm
- Fire Extinguisher
- Deadbolt Lock on Entrance Door
- Lighted Interior and Exterior Grab Handles
- 120V GFI Protected Circuit
- LP Gas Detector
- Smoke Detector
- Carbon Monoxide Detector
- Integrated Pilot and Co-Pilot Three-Point Seatbelts
- Third Brake Safety Light
- Egress Window
- Security Safe
- Deluxe Security System

OPTIONS

- SafetyCruise (Collision Avoidance System)

BUY LOCALLY. ENJOY EVERYWHERE.

Monaco RV strongly encourages our retail customers to purchase from their local dealerships whenever possible. Buying a new Monaco RV locally allows a customer to establish a relationship with a dealer close to home and provides convenient service and support from product-trained technicians. On our end, Monaco RV will continue to provide our dealer partners and customers with the finest recreational vehicles in the industry.

INTERIOR

- › Stained or Natural Oak Cabinetry
- › Dinette Wall Cabinet with Solid Surface Top
- › Built-In Storage Area for Kitchen Countertop Covers
- › Bedroom Dresser with Raised Panel Drawer Faces
- › Clothing Hamper in Bedroom
- › Low-Friction Roller Drawer Guides
- › Radiused Ceiling Design with Accents in Living Room and Bedroom
- › High-Gloss Corian® Countertops Throughout
- › Integrated Sinks in Vanity and Galley
- › Mosaic Tile Shower Design
- › Mosaic Tile Galley Backsplash Design
- › Mosaic Tile Vanity Backsplash Design
- › Corian® Countertop Shelf at Living Room Side of Kitchen Countertop
- › Power Vienna Shades in Living Room and Dining Area
- › Day/Night Shades with Blackouts in Bedroom
- › Designer Vinyl Wallpaper Throughout
- › Foss Lined Wardrobes
- › Two-Tiered Silverware Drawer Divider
- › Pullout Trash Can next to Two Pullout Shelves in Lower Galley Cabinet
- › Hardwood Drawer under Bed
- › Designer Textured Carpet in Living Area and Bedroom
- › High-Gloss Tile Floors in Galley and Bath
- › High-Gloss Tile Flooring in Cockpit Area
- › Raised Panel Door for Private Bath
- › Bedspread and Pillows
- › Nightstands with Corian® Countertops
- › Corian® Windowsills in Living Area
- › New Brushed Bronze or Satin Nickel Cabinet Hardware and Faucets Throughout
- › Decorative Hardwood Headboard
- › Decorative Hardwood Slide-Out Fascia
- › Etched Refrigerator Wall Mirror (Commander IV Only)
- › Decorative Window Valance Treatments with Wood Carving and Inlaid Laminate

OPTIONS

- › Interior Decors: Golden Nugget, Black Galaxy
- › Ralph Lauren Decors: Black Pearl, Windermere, Kingsbridge
- › Natural Maple, and Natural, Stained or Classic Cherry Cabinetry
- › Central Vacuum Parts Storage Tray under Bed When Central Vacuum Is Optioned
- › Full-Wall Living Room Valance Option
- › Ceiling Fan in Bedroom
- › Sculptured Carpet Design in Living Room
- › Full-Tile Living Room Floor
- › Area Rugs in Living Room and Galley (with Full Tile Option)
- › Under-Mounted Glass Sink in Vanity
- › Above Counter Sink (Ralph Lauren Decor Package Only)

PLUMBING AND LP SYSTEMS

- › Central Water Purifier in Service Compartment
- › Manabloc Water System for Entire Coach
- › Super Service Center with Insulated Systems Compartment with Easy Access to Hook-Up
- › Water Pump Switch in Galley, Bathroom and Service Bay
- › Winterization Valving System
- › China Toilet
- › Corian® Shower with Tile Accents and Shower Caddy
- › Shower Head Shut-Off
- › RV Sani-Con Tank Drainage System
- › Black Holding Tank Rinsing System
- › Outside Faucet with Hot and Cold Water
- › Power Water Hose Reel
- › Soap Dispenser in Kitchen
- › Insta-Hot® Water System in Kitchen

OPTIONS

- › Bathtub (N/A Chancellor IV)

HEATING, VENTS AND AIR CONDITIONING

- › Aqua-Hot® Heating System
- › Three Low-Profile Ducted 15M BTU Roof Air Conditioners with Wall Thermostat and Heat Pump
- › Electronic AC/Heat Climate Control System
- › Center Defroster Vents
- › 12V Attic Fan with Wall Thermostat in Private Lavatory and Galley
- › Horizontal Louvered Vents/Grills in Vanity, Lavatory Vanity, under Dash and Wardrobe

OPTIONS

- › Galley Low-Profile 120V Baseboard Heater. (N/A with Radiant Floor Heating)
- › Radiant Floor Heating in Living Area, Galley and Bath

FURNITURE

- › Legless Side-Slide Solid Surface Dinette Table with Two Freestanding Dinette Chairs
- › Roadside: Fabric Sleeper Sofa
- › Curbside: Leather J-Lounge with Drawer and Ottoman with Storage
- › Queen Bed with Pillowtop-Hinged Mattress

OPTIONS (Living Area Furniture Location is Floorplan Dependent)

- › King Bed (72" x 80")
- › Queen Air Mattress with Digital Remote
- › King Air Mattress with Digital Remote
- › Dinette Side: Leather Euro-Recliner with Ottoman
- › Roadside: Glider Recliner with Ottoman
- › Leather Sleeper Sofa with Drawer and Ottoman with Storage
- › Laptop Style Computer Desk with Leather Euro-Recliner and Ottoman
- › Leather Hide-A-Bed and Ottoman with Storage
- › Leather Hide-A-Bed with Air Mattress and Ottoman with Storage
- › Fabric/Leather Sectional Booth Dinette Ensemble
- › Two Folding Chairs with Sectional Booth Dinette Ensemble

WINDOWS, DOORS AND AWNINGS

- › Flush-Mounted Radius Dual Pane Safety Glass Dark Tinted Windows
- › Front Entry Door with Air Seal and Removable Top Screen
- › Keyless Remote Entry System with Pocket Remote
- › Girard® Front Door Awning
- › Topper Slide-Out Awnings All Houses
- › Carefree® Manual Window Awnings
- › Roof-Mounted Girard® Automatic Front Patio Awning
- › Tinted Skylight in Bathroom (Protecta Glaze)

OPTIONS

- › Roof-Mounted Girard® Automatic Rear Patio Awning (Includes 2nd Patio Light with Option)
- › Girard® Window Awnings on All Slide-Out House Windows (except Private Lavatory Window)

ELECTRICAL SYSTEMS AND LIGHTS

- › 50 Amp 120/240V Distribution Panel in Cockpit Overhead
- › Power Cord Reel
- › Onan® 12.5 kW QD Generator on Power Slide-Out Tray with Auxiliary Start Switch and Automatic Temperature Start
- › 2,800 Watt Pure Sine Wave Inverter with Auto Gen Start and Auto Temp Start
- › Halogen Map Lights above Driver/ Passenger Seating
- › Accent Rope Lighting Throughout Coach
- › Lighted Utility Center
- › Underhood Utility Light
- › 120V Outlet in Private Bath, Bed Base and inside Storage Compartments
- › Lights in Outside Storage Compartments
- › Four 6V House Batteries
- › Two 12V Chassis Batteries (Three with ISX-650 Engine Option)
- › Surge Guard Automatic Transfer Switch
- › Multiplex 12V Wiring for Dash and Throughout Interior of Coach
- › 100 Watt Solar Panel
- › Decorative Lighting Throughout
- › Cosmetic Vanity Lights in Bathroom
- › Halogen Lighting in Ceiling Throughout
- › Doorbell
- › Pin Light in Galley under Sink Storage
- › 12" Porch Light
- › Dimmer Switches for Vanity Overhead Lights
- › Battery Maintainer Charges Chassis and House Batteries
- › Battery Disconnect Switch inside Coach with 2-Second Timer
- › Power Slide-Out Generator Tray
- › Battery Boost Switch
- › Electronic Controls in Cockpit Passenger Overhead
- › Touch Pad Switch Plates with Multiplex Wiring
- › Rope Lighting in Living Room and Bedroom Valances, under Galley and Bedroom Toe Kicks
- › Courtesy Lighting in Stepwell
- › Magnetic Switch in Wardrobe Doors for Wardrobe Light
- › Front and Rear Electrical Run Boxes

OPTIONS

- › Glass Matt Batteries (Replaces House and Chassis Batteries)
- › Curbside Accent Patio Lighting on Underside of Slide-Outs (N/A Buckingham IV)

SAFETY

- › Backup Alarm
- › Fire Extinguisher
- › Deadbolt Lock on Entrance Door
- › Lighted Interior and Exterior Grab Handles
- › 120V GFI Protected Circuit
- › LP Gas Detector
- › Smoke Detector
- › Carbon Monoxide Detector
- › Integrated Pilot and Co-Pilot Three-Point Seatbelts
- › Third Brake Safety Light
- › Egress Window
- › Security Safe
- › Deluxe Security System

OPTIONS

- › SafetyCruise (Collision Avoidance System)

BUY LOCALLY. ENJOY EVERYWHERE.

Monaco RV strongly encourages our retail customers to purchase from their local dealerships whenever possible. Buying a new Monaco RV locally allows a customer to establish a relationship with a dealer close to home and provides convenient service and support from product-trained technicians. On our end, Monaco RV will continue to provide our dealer partners and customers with the finest recreational vehicles in the industry.



MONACO®

DRIVING YOUR DREAM.

At Monaco RV it's our goal for all our customers to enjoy their RV experience from the beginning. We have forged strong, reliable relationships with our dealer partners, and we encourage our customers to do the same. We're proud to boast a network of over 350 dealership partners and service centers across North America. We're confident that this relationship will only enhance your RV experience and provide the added peace of mind you desire, so you can focus on the important stuff. After all, we're not just selling a world-class product, we're selling "fun." You can rest assured, Monaco RV will be along for the ride, every mile your RV adventure takes you.

SIGNATURE SERIES



DYNASTY™



CAMELOT™



DIPLOMAT™



KNIGHT™



CAYMAN™



MONARCH™



RIPTIDE™



MONTCLAIR





MONACO

DRIVING YOUR DREAM.

At Monaco RV it's our goal for all our customers to enjoy their RV experience from the beginning. We have forged strong, reliable relationships with our dealer partners, and we encourage our customers to do the same. We're proud to boast a network of over 350 dealership partners and service centers across North America. We're confident that this relationship will only enhance your RV experience and provide the added peace of mind you desire, so you can focus on the important stuff. After all, we're not just selling a world-class product, we're selling "fun." You can rest assured, Monaco RV will be along for the ride, every mile your RV adventure takes you.

SIGNATURE SERIES



DYNASTY®



CAMELOT™



DIPLOMAT®



KNIGHT®



CAYMAN®



MONARCH®



RIPTIDE®



MONTCLAIR

