

Discover Another World.

Adventurer
TRUCK CAMPERS

Adventurer TRUCK CAMPERS



Since 1969, Adventurer Manufacturing's reputation has been built on a commitment to customer satisfaction. Our team of manufacturing specialists is dedicated to ensuring excellence in all areas of design, engineering, construction and assembly. Demonstrating a proven ability to listen and respond to our customers' needs, the company has grown from a small regional operation to an international industry leader, with an unrivalled reputation for outstanding — **service, quality and value.**



910FBS

OUR MISSION STATEMENT

Our mission is to be industry leaders in manufacturing recreational vehicles, and as a team do everything possible to ensure our customers' vacation dreams are realized.

To succeed in our mission, we apply the corporate standard established by Erdman Epp, founder of Adventurer Truck Campers. His rule is short, simple and successful:

ON COVER: 106DBS

"We're never satisfied until good is better...and better—best!"

The result of our total commitment to this principle is the Adventurer Truck Camper made for the adventurer in you as you explore God's beautiful creation.

Comfort Starts Here.



910FBS / Sage Decor

ATTRACTIVE, DURABLE AND RELIABLE

At Adventurer Manufacturing our attractive interiors and durable exteriors are built to withstand the rigors of outdoor living. The craftsmanship and attention to detail is evident in all aspects of an Adventurer. Quality cabinet doors that fit precisely, windows that seal tightly even in the most inclement

weather, beautiful upholstery, furnishings and extra storage compartments. All this plus more add up to what we believe is the best value in the industry.



950B / Autumn Decor

INNOVATIVE FLOOR PLANS ENHANCE THE EXPERIENCE

Adventurer floor plans have always been designed with comfort in mind. The innovative Adventurer 950B was developed by listening and design engineering to our customer's needs. You asked for full-size sleeping accommodations for 6 without the hassles and possible loss of weather protection of a folding tent extension. We delivered! From the full-size bunk beds in the slide-out room with individual sliding windows and reading lights, to the large wrap around dinette/lounge area and forward bath area, this floor plan offers exceptional features not found in any other truck camper in its size class. Innovation, quality and value all come together in every unique Adventurer floor plan.

IN-SLIDE FOLD-DOWN BUNK

The optional In-Slide Bunk allows additional sleeping accommodations with plenty of headroom and access to the large opening dinette window for easy ventilation. The effortless fold-down/up feature is easy to use and store when not needed. Comfort for a quick nap or a full-nights rest!

LOWERED



RAISED



A Decor for Every Taste.



106DBS / Toffee Decor



AUTUMN DECOR



SAGE DECOR



TOFFEE DECOR

Adventurer Truck Campers use high quality durable fabrics to create pleasing decors that are functional and rugged, yet contemporary and easy to care for. These professional designer chosen fabrics coordinate beautifully with selected high quality wall coverings, galley and bath surfaces, flooring and solid shaker-style maple cabinet doors and drawer fronts to create 3 popular new interior decor groups. Choose a color group and personalize your new camper to suit your own unique sense of style.



910FBS

QUICK SNACK OR 4-COURSE MEAL – ADVENTURER CAN HANDLE IT ALL

All Adventurer models boast efficient galleys with a high-quality residential feel. From the oversize and rugged acrylic sink with high-neck faucet, easy clean sealed burner range and oven (most models), to the standard flip-up counter extension that creates additional work space (some models), meal preparation while on the road has never been easier. The largest refrigerator/freezer combinations are engineered into each model as standard equipment offering abundant space for a short trip or an extended-stay journey. Innovative uses of available space, such as the handy knife block behind the range and oven (most models) and the adjustable shelf slide-out pantry in the Adventurer 910FBS, are additional touches that all will appreciate.

You Just Might Stay Inside.



980RDS / Sage Decor

GAME TIME – MEAL TIME – QUIET TIME

Adventurer dinette areas are oversized with deeper seating areas for increased comfort no matter what activity you have planned. Our booth-style dinettes are wider, allowing seating for 4 full-size adults. The new Dream Dinette® – Quick Release Bed Conversion System, standard on all booth dinette models, simplifies preparation of the bed area and eliminates the dreaded chore of manually handling and maneuvering the table into place. A quick turn of the handle and a gentle push drops the table top into position along a permanently mounted wall track. A gas-filled strut automatically raises the table back into place. Having no awkward folding or removable table post offers increased legroom and comfort.

The large U-shaped dinette and lounge area, standard in the 86SBS, 950B and 910FBS, offer more comfort than ever before and spaciousness not found in other truck campers. The unique round table creates a greater surface area and will slide and swivel into position to accommodate persons of all sizes. A deep roll-out storage drawer beneath will accommodate all your extra belongings.

On smaller models, some of Adventurer's more traditional dinette areas feature flip-up seats that conveniently fold-down out of the way to increase floor space when not in use.

YOUR OWN PRIVATE RETREAT

All Adventurer bedrooms are equipped with a queen-size bed, and in most models, a residential-size innerspring mattress for a comfortable nights rest. Choose the designer coordinated bedspread and pillow option (standard on most models) to accent the area when not in use. An oversized double mirrored wardrobe closet is a standard feature in several models and will accommodate all your wardrobe needs regardless of season or length of stay. Additional storage areas keep other items close at hand. Individual reading lights are standard. The optional 15" LCD Flat Screen 12-Volt TV with Triple Pivot Arm allows a comfortable viewing angle from the bedroom or may be swung into position and viewed from the living area. Pleated pull-down shades are standard in every model and are used throughout the camper.

Adventurer bathrooms are spacious and designed for easy care and ease of use. Some models, like the 910FBS, are equipped with a standard full roof skylight to add a new dimension of space. Custom designed full-height seamless one-piece fiberglass shower stalls with integrated vanity sinks are standard in most models. The Adventurer 106DBS offers the ultimate in convenience with ample storage cabinets, a separate tub/shower combination topped with a skylight and plenty of room to maneuver in comfort.



106DBS / Toffee Decor



106DBS



910FBS / Sage Decor



910FBS

Introducing the New 80SK & 80GS - Pound for Pound They Pack a Punch.



Looking for the lightest weight, full-featured fiberglass exterior truck campers for your full-size truck? Well, you've found them! *The all-new 80SK and 80GS* incorporate many truck camper firsts! Special composite panels and building substrates, developed and proven in the automotive and structural housing markets, shed weight while adding incredible strength and impact resistance. Adventurer's Tru-Composite Construction technique meticulously bonds these materials together, along with full-foam insulation, to create solid and lightweight structural components backed by our industry-leading 3-Year Structural Warranty.

The 80GS, due to this process and other weight saving innovations, meets the challenge of creating a self-contained truck camper with interior shower, hot water tank, furnace, fresh-water flush toilet with holding tank, large refrigerator/freezer, and ample storage weighing in at only 1466 lbs./665 kg. with base equipment! There's even a manually operated glide-out galley slide area to increase the spaciousness! Lightweight, affordable, a truck camper first and an Adventurer exclusive!

80GS



1. The efficient 80GS bathroom includes a fresh-water flush toilet with holding tank, a telephone-style shower head, vinyl shower curtain, a full roof skylight and ceiling mounted power roof vent.

2. The 80GS U-shape dinette/lounge area is spacious and



converts to a bed for night time comfort. The queen-size cabover bedroom is spacious, comes standard with 2-directional high-intensity reading lights and can be customized with the Camper Caddy Storage System (shown) to hold additional clothing or other belongings.



3. The 80GS slide-out galley area is full-featured with a 2-burner LPG stove, single acrylic sink with high-mount faucet, and next to it, a large 4-cubic foot refrigerator/freezer. Add a convenient optional Microwave Oven (shown) to customize your camper to suit your camping style.



AWNINGS

Expand your living space and camping enjoyment in every season by adding an optional Patio and Rear Awning. The Rear Awning is full-width for maximum protection and the Patio Awning conveniently rolls-up into its own fully-enclosed aluminum box that compliments the exterior.



FIBREGLASS FRONT CAP AND HIGH-GLOSS EXTERIOR FINISH

The weatherproof molded Fibreglass Front Cap, standard on select models, is curved for greater aerodynamics, provides greater impact resistance and creates a more stylish complimentary automotive appearance. The High-Gloss Exterior Finish, standard on select models, is thicker for higher tensile strength which produces a stronger overall structure. The increased gloss produces higher reflectivity values for greater insulation and a highly automotive appearance.



COMFORT-STEP BUMPER® (optional)

An Adventurer exclusive, the Comfort-Step Bumper provides a solid, wide platform with multiple steps to aid in safe-and-sure entry and exit from the camper. Boasting the lowest ground-to-step height of any permanently attached system, it provides sure-footed access for all ages. The aluminum design is lightweight, durable and is an attractive addition available on select floor plans. The step conveniently folds up out of the way and locks into place for travel.



SOLAR REFLECTIVE WINDOWS

Solar Reflective Safety Glass Windows, standard on select models, provide additional thermal protection, additional privacy, glare-free viewing in the daytime and at night, and enhance the exterior appearance. Add the Thermopane option to further enhance your all-weather capabilities.



MARINE EXTERIOR SPEAKER PACKAGE WITH SELECTOR SWITCH

Expand your entertainment to the outdoors! Optional on all models, this package includes 2-weather resistant marine grade exterior speakers and an interior selector switch to activate the interior, exterior or both speaker groups together.



BASEMENT STORAGE AND STORAGE DRAWER

Fishing gear, water skis and other bulky items are no problem! The Basement Storage Drawer is standard on select models and glides out easily for access. A large basement storage area is standard on most other basement-style floor plans.



EXTERIOR BBQ QUICK DISCONNECT

Hook-up any appliance that requires LPG conveniently. No more disposable bottles or extra bulky LPG tanks to haul around! Connected and regulated off the standard LPG camper system. Optional on select models.



AM/FM/CD/DVD/MP3/SIRIUS READY SYSTEM & LCD FLAT SCREEN 12-VOLT TV

Optional on select models, both components are manufactured by MB Quart®, a leading German audio/visual supplier. Designed specifically for the Marine Industry, these quality components are designed to handle hard bumps, knocks and are reliable even in moist environments.



SOLAR PANEL/SLIDE-OUT BATTERY TRAY

Go green! Equip your camper with an optional 100-Watt Solar Panel with Regulator available on select models. In conjunction with the standard Dual-Battery Compartment with Slide-Out Tray (select models) you can camp for extended periods "off the grid" and off the beaten path!



GENERATOR

Onan® reliability. The latest technology provides fuel efficiency and on-board 110-Volt electric power wherever you go! Optional on select models.

TRU-COMPOSITE[®] CONSTRUCTION TCC[®] WOOD



Wood Framed TCC[®] is used on the 80GS, 80SK, 80W, 85WS and 810WS

- 1 Solid Foam Core
- 2 Fibreglass Outer Shell
- 3 Wood Frame
- 4 Inside Wall Surface
- 5 Exterior Substrate



TRU-COMPOSITE[®] CONSTRUCTION TCC[®] ALUMINUM



TCC[®] Aluminum is used on the 86SBS, 90FWS, 980RDS, 950B, 910FBS and 106DBS

- 1 Solid Foam Core
- 2 Lumber Core
- 3 Aluminum Tube Frame
- 4 High-Gloss Fibreglass Outer Shell
- 5 Inside Wall Surface
- 6 Exterior Substrate



Framing an Adventurer Truck Camper is a craft in itself. All materials are pre-cut and hand assembled to provide a tighter, stronger fit.

- 1 Our composite fibreglass walls are constructed by laminating a welded aluminum tube or wood frame between an outer fibreglass shell and an inner laminated panel. The void created by these two panels is filled with a solid styrofoam insulation.
- 2 All units use flush-frame safety glass radius windows with gusseted corners. Solar reflective windows are standard on most models, provide greater privacy and reflect UV rays keeping the interior at a comfortable temperature.
- 3 The heated enclosed holding tank area is insulated with reflectics. Heat ducts in the holding tank area ensure a warm area when the furnace is in operation, leaving the zone warm & dry at all times.
- 4 A sturdy powder coated aluminum ladder provides easy access to the roof. (standard most models)
- 5 Generous exterior storage space.
- 6 Tie-down brackets are bolted to the main wall and wing wall for extra reinforcement and strength.
- 7 Our front jacks are completely bolted through the wall corners to achieve a strong and stable platform when the camper is not on the truck.
- 8 The Happi-Jac[®] camper jack system continues our tradition of quality manufacturing. Providing over 34" of lift, the Happi-Jac[®] screw jack safely raises and lowers the camper with ease, ensuring optimum efficiency and performance, while enhancing the look of your camper. The unique concave footpad design reduces movement and offers improved stability over convex footpads.
- 9 Stylish graphics enhance the look of all Adventurer Truck Campers and coordinate with today's popular truck colors.

First-Class Construction, Guaranteed.



3-YEAR LIMITED STRUCTURAL WARRANTY

All Adventurer products are warranted to be free of defects in materials or workmanship for 36 months from date of delivery to the original purchaser and will be repaired or replaced, within this period, at the discretion of the manufacturer at approved service centers.

Any component carrying its own guarantee shall be covered under the conditions and terms of its manufacturer. This warranty does not cover damage caused by misuse, accident, alteration, improper maintenance or rental. Contact your dealer for details.

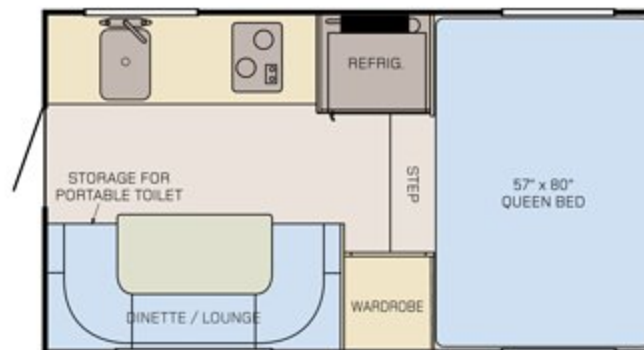
- 10 All external walls are insulated with high density styrofoam for all-weather insulation, sound dampening and structural strength.
- 11 Large emergency egress window.
- 12 Floor on overhead bed is bolted in place with 3/4" bolts on each side.
- 13 At Adventurer we manufacture our own exterior fibreglass to exact specifications to ensure our products are always up to our high standards. We use only the best building materials, from aluminum tubing to quality solid wood cabinet doors; absolutely no particle board is used.
- 14 A fully framed composite panel roof is fully load bearing and walkable. A one-piece roof membrane with a 12-year limited warranty is tightly sealed and is standard.
- 15 Molded fibreglass nose caps are standard on all TCC[®]-Aluminum constructed campers, are more aerodynamic and use automotive styling to complement today's popular trucks.

WHEN PURCHASING AN ADVENTURER TRUCK CAMPER, THERE ARE A FEW IMPORTANT FACTORS TO CONSIDER:

How much weight will your truck handle? The payload capacity is usually posted in the glove box on most trucks. What is your (GVWR) Gross Vehicle Weight Rating, and (GAWR) Gross Axle weight Ratings? These are usually posted on the driver's side door post.

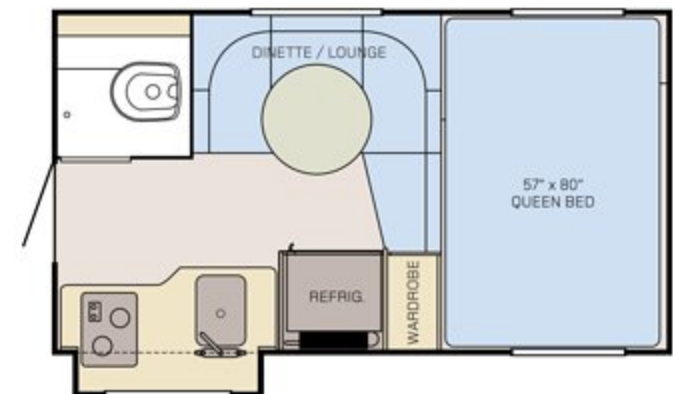
As the owner, it is your responsibility not to exceed the weight specifications of your truck when purchasing a truck camper. Always think safety first before loading a camper on your truck. Please consult your dealer, who can help you select aftermarket items designed to aid in proper use of your truck and camper combination.

If you need service on your Adventurer while away and you are not near an Adventurer dealer, just stop in at any reputable RV service center and have them contact Adventurer for authorization to repair your recreational vehicle under warranty.



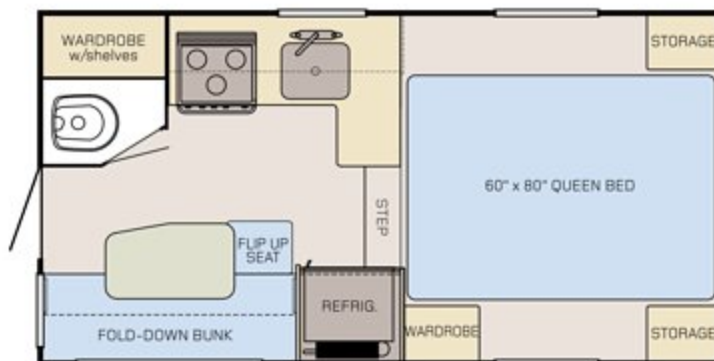
80SK

The 80SK is exclusively designed for the traveller who is looking for a no-nonsense simple floor plan, yet with the features needed to enjoy a quick get-away in comfort. Special lightweight composites create a solid package suited for most full-size light-duty 6½ foot short-bed or long-bed trucks.



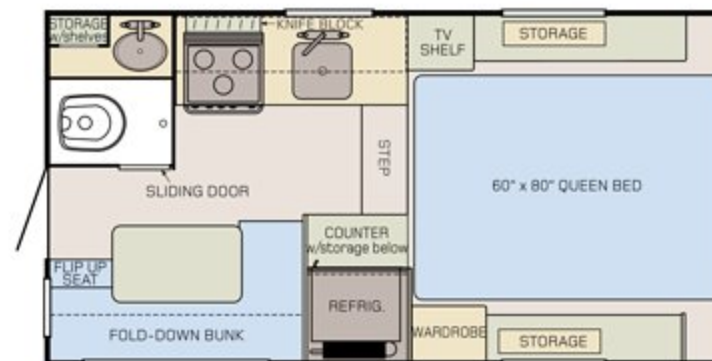
80GS

Self-contained and full featured, the 80GS incorporates a lightweight Slide-Out Galley Area. A popular U-Shape Dinette/Lounge easily converts for sleeping comfort, and a comfortable bathroom complete with shower and toilet is a standard feature. All this in a package designed exclusively for today's most popular light-duty full-size 6½ foot short-bed trucks (including the Toyota Tundra and Nissan Titan). Lightweight, affordable, a truck camper first, and an Adventurer exclusive!



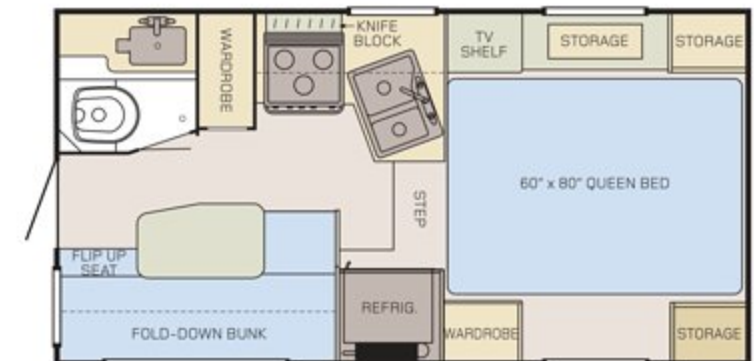
80W

The 80W boasts a large 5 cu. ft. refrigerator standard, the largest in its class. The rear bath with fresh water flush toilet and holding tank, full galley and ample cabover make for a comfortable and convenient camping experience. Fits short-bed and long-bed trucks.



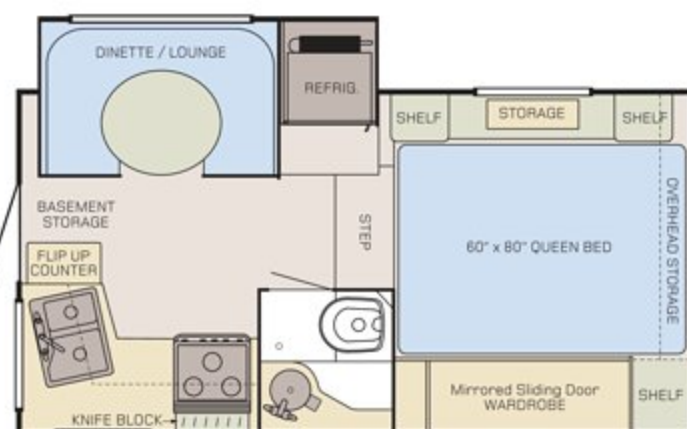
85WS

Next in the 8 foot series is the 85WS. Also, built using our TCC®-Wood construction, this deluxe model sports a full bathroom, generous storage, and even with extras, it is still light and economical. Generously sized basement holding tanks aid its all-weather capabilities. Fits short-bed and long-bed trucks.



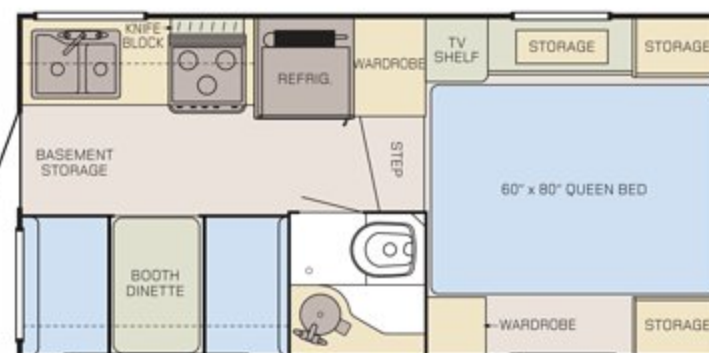
810WS

We designed the 810WS over a quarter century ago. It has been often copied by others in the industry, but only Adventurer can claim the original design. This Luxury Camper has been significantly upgraded with a larger 6 cu. ft. refrigerator. A fully installed Generator with short-bed option is available. Generously sized basement holding tanks aid its all-weather capabilities. Fits short-bed and long-bed trucks.



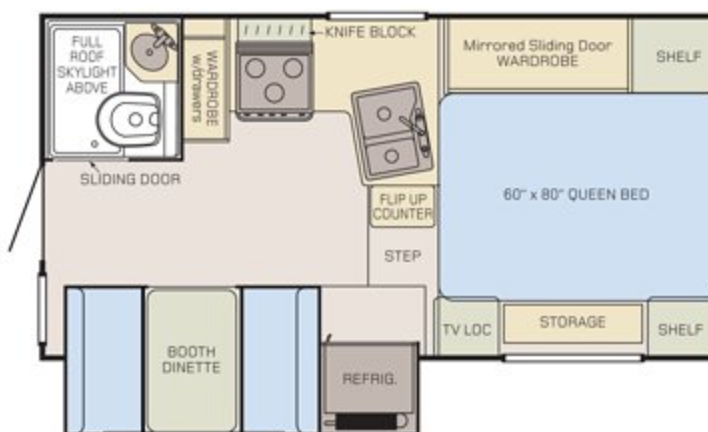
86SBS

The 86SBS is the first and smallest slide unit in our series of truck campers. Start with an 8'-6" length, add a full wall slide with large dinette/lounge, toss in a full bathroom, large closet, and ample space. Top that off with Adventurer's TCC®-Aluminum process and serve with a 3-year limited structural warranty. A fully installed Generator with short-bed option is available. Fits short-bed and long-bed trucks.



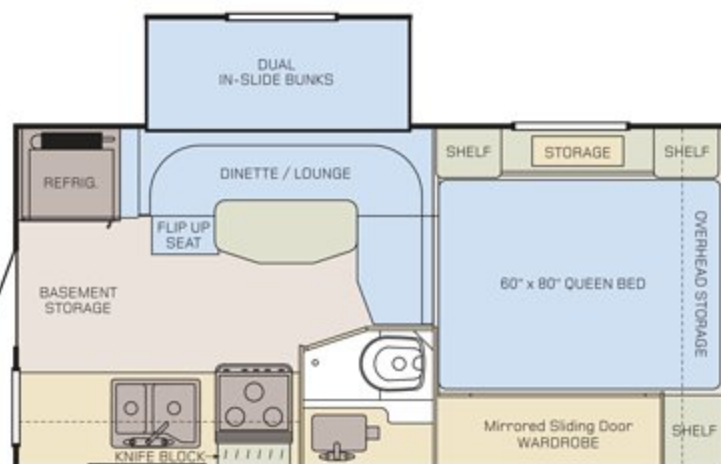
90FWS

First in line for the 9 foot series, is the 90FWS. It features a forward bath, full side dinette, and over 10 cu. ft. of external storage. Designed to fit a 3/4 ton or larger truck, this luxury model's large dinette and ample cab over afford a higher level of comfort. Available with optional Generator. Fits long-bed trucks.



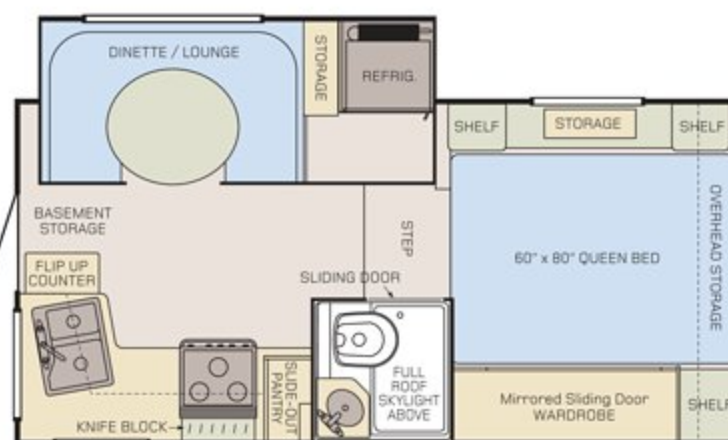
98ORDS

Classic in style, the full rear bath is topped with a large, bright, and airy skylight. The full-wall slide includes a large booth dinette and double door 6 cu. ft. refrigerator. A unique "Motorcoach-Style" Service Center contains all your external connections (110V cord, 110V Patio Receptacle, Outside Shower, Etc.) in one handy location. Oversize galley drawers, outside secure and lockable storage and a unique recessed TV area all combine to create one of our most spacious floor plans. Available with optional Generator. Fits long-bed trucks.



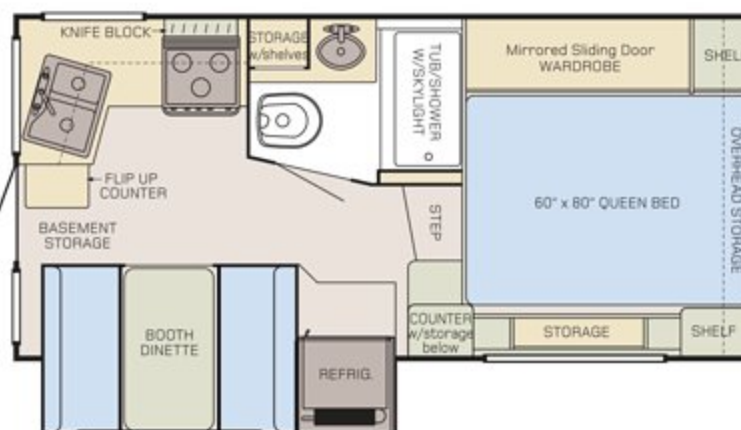
950B

A truck camper first! This floor plan is exclusive to Adventurer and was developed with the family in mind. Full-length dual bunks in the extra deep slide-out provide a comfortable sleeping area with individual windows for increased ventilation. The oversize dinette/lounge area accommodates a large gathering with ease. You'll appreciate the abundant storage areas and plenty of room for everyone in a smaller package. Available with optional Generator. Fits long-bed trucks.



910FBS

The largest in the Adventurer nine foot range is the 910FBS. The slide-out includes a large dinette/lounge, refrigerator, and an optional fold-down dinette bed. Rear and side windows in the galley, further open up and brighten the unit interior. Under the dinette, a huge secure storage compartment can be accessed from outside the slide. Available with optional Generator. Fits long-bed trucks.



106DBS

Adventurer has poured a lot of effort into creating the 106DBS. Being the largest of the series, it is chocked full of creature comforts. It features a dry bath/shower area, large dinette/refrigerator slide, storage to spare, and a large galley which makes food preparation a breeze. Be sure you have a look at this camper for the ultimate camping experience. Available with optional Generator. Fits long-bed trucks.

	80SK	80GS	80W	85WS	810WS	90FWS	86SBS	980RDS	950B	910FBS	106DBS
CONSTRUCTION / EXTERIOR											
Tru-Composite Construction	•	•	•	•	•	•	•	•	•	•	•
High-Gloss Fiberglass Exterior						•	•	•	•	•	•
Fiberglass Exterior	•	•	•	•	•						
Molded Fiberglass Exterior Front Cap						•	•	•	•	•	•
Fiberglass Exterior Front Wrap	•	•	•	•	•						
Insulation-High Density Foam	•	•	•	•	•	•	•	•	•	•	•
Windows-White Frame Solar Reflective Safety Glass					•	•	•	•	•	•	•
Windows-White Frame Safety Glass	•	•	•	•							
Window-Egress In Cabover	•	•	•	•	•	•	•	•	•	•	•
Roof-Thermal Polyolefin (TPO) Walk-On	•	•	•	•	•	•	•	•	•	•	•
Slide-Out Full Wall/Dinette & Refrigerator							•	•		•	•
Manual Ball Screw Jacks	•	•	•	•	•	•	•	•	•	•	•
Radius Top Entrance/Screen Door	•	•	•	•	•	•	•	•	•	•	•
Roof Rack & Ladder-White					•	•	•	•	•	•	•
Compartment Doors-Radius/Insulated			•	•	•	•	•	•	•	•	•
Basement Storage Drawer						•		•			•
Sewer Hose Carrier		•	•	•	•	•	•	•	•	•	•
Step Bumper-Aluminum w/Folding Step							•	•	•	•	•
INTERIOR											
Extenda Cab w/60" X 80" Spring Filled Mattress			•	•	•	•	•	•	•	•	•
U Dinette w/Large Secure Exterior Storage							•			•	
Dream Dinette - Quick Release Bed Conversion						•		•			•
Blinds-Day/Night Shades					•	•	•	•	•	•	•
Blinds-Night Shades	•	•	•	•							
Cabinet Doors - Shaker Style Maple	•	•	•	•	•	•	•	•	•	•	•
Bedspread & Pillows							•	•	•	•	•
Carpet-Full Cabover Floor			•	•	•	•	•	•	•	•	•
Fantastic Fan	•	•									
Fold Down Bunk/Storage Over Dinette			•	•	•						
Mirrored Double Wardrobe Closet							•	•	•	•	•
Padded Fabric Headboard in Bedroom					•	•	•	•	•	•	•
SAFETY											
Folding Entry Assist Handle			•	•	•	•	•	•	•	•	•
Auto Changeover LPG Regulator					•	•	•	•	•	•	•
Carbon Monoxide Detector/Alarm	•	•	•	•	•	•	•	•	•	•	•
Fire Extinguisher	•	•	•	•	•	•	•	•	•	•	•
Gas Leak Detector/Alarm	•	•	•	•	•	•	•	•	•	•	•
Smoke Detector/Alarm	•	•	•	•	•	•	•	•	•	•	•
GFI-Exterior Plug			•	•	•	•	•	•	•	•	•
Lock-Flush Mount Entry w/Dead Bolt	•	•	•	•	•	•	•	•	•	•	•

Blank field indicates not available or optional on that model.

	80SK	80GS	80W	85WS	810WS	90FWS	86SBS	980RDS	950B	910FBS	106DBS
BATHROOM											
Shower-One Piece Fiberglass					•	•	•	•	•	•	•
Toilet-Fresh Water/w Holding Tank		•	•	•	•	•	•	•	•	•	•
Shower Pan Base		•		•							
Shower-Dry Bath											•
Full Roof Skylight In Bathroom		•						•		•	
Skylight Over Shower											•
12V Power Vent In Bathroom		•	•	•	•	•	•	•	•	•	•
Sliding Bathroom Door - Solid Maple				•				•		•	
PLUMBING / ELECTRICAL											
Furnace-25,000 BTU DSI							•	•	•	•	•
Furnace-16,000 BTU DSI	•	•		•	•	•					
Furnace-12,000 BTU DSI			•								
Water Heater-6 US Gallon DSI				•	•	•	•	•	•	•	•
Water Heater-4 Gallon DSI Suburban	•	•									
Water Heater By-Pass Kit	•	•		•	•	•	•	•	•	•	•
Water Pump-12 Volt Demand System	•	•	•	•	•	•	•	•	•	•	•
Battery Compartment-Dual Slide-Out					•	•	•	•	•	•	•
Battery Compartment - Single	•	•	•	•							
Battery Disconnect Switch			•	•	•	•	•	•	•	•	•
Converter - 45 Amp w/Battery Charger	•	•	•	•	•	•	•	•	•	•	•
Audio/Video Ready w/Input Jack					•	•	•	•	•	•	•
Holding Tanks-Heated, Enclosed, Insulated		•	•	•	•	•	•	•	•	•	•
Monitor Panel - Fluids,Batt. Cond., Pump				•	•	•	•	•	•	•	•
Pre-Wire For Air Conditioner	•	•	•	•	•	•	•	•	•	•	•
Pre-Wire For Microwave Oven	•	•		•	•	•	•	•	•	•	•
Pre-Wire For Solar Panel					•	•	•	•	•	•	•
Pre-Wire For Stereo and Speakers	•	•	•	•	•	•	•	•	•	•	•
Pre-Wire For TV Antenna & Cable			•	•	•	•	•	•	•	•	•
Pre-wired For Electric Jacks					•	•	•	•	•	•	•
Propane-Dual 20 LB Bottles					•	•	•	•	•	•	•
Propane-Single 20 LB Bottle	•	•	•	•							
Shower-Outside					•	•	•	•	•	•	•
Cable Hook-Up-Exterior			•	•	•	•	•	•	•	•	•
Water Fill-Lockable			•	•	•	•	•	•	•	•	•
Low Point Drain System	•	•	•	•	•	•	•	•	•	•	•
Yard Light-Exterior/Rear	•	•	•	•	•	•	•	•	•	•	•
GALLEY											
Refrigerator - Dometic 2-Door 2-Way-6 CU. FT.					•	•	•	•	•	•	•
Refrigerator - Dometic 2-Way-5 CU. FT.			•								
Refrigerator - Dometic 2-Way-4 CU. FT.	•	•		•							
Stove/Oven - 3 Sealed Burners			•		•	•	•	•	•	•	•

Blank field indicates not available or optional on that model.

Adventurer TRUCK CAMPERS



810WS

Your Authorized Dealer:

USA:

Manufacturing, Sales & Marketing,
Customer Services

Adventurer LP

3303 West Washington Avenue
Yakima, Washington 98903
Toll-Free: 866-312-0799

CANADA:

Adventurer Mfg. Ltd. Partnership
30440 South Fraser Way
Abbotsford, BC V2T 6L4
Tel: 604-852-5731

www.AMLRV.com

FACTORY TOURS

We invite you to visit our manufacturing facility located in beautiful Yakima, Washington. During your tour, you will see Adventurer Truck Campers being assembled with tremendous skill and pride. Tours are available by appointment. Please call for details.

NOTICE: Adventurer Truck Campers, whose policy is one of continuous improvement, reserves the right to change any of the specifications without prior notice and without incurring any obligation. If you have any questions about our product line, please don't hesitate to contact your nearest dealer or an Adventurer representative.

