

2011 SAVOY® LX



HOLIDAY RAMBLER®

*This is Living®*



*Savoy LX*

800.877.0870 | [www.holidayrambler.com](http://www.holidayrambler.com)



*Savoy LX*

## WELCOME TO THE SAVOY

**Luxury and Elegance. Quality and Value.  
Residential Appeal. And Choice.**

**You can have it all with the 2011 Savoy.**

Available in either travel trailer or fifth wheel models, warm Golden Select or rich Newport Cherry cabinetry. Just a few of the endless option combinations available to make the Savoy your own, your home.

Stunning decorative wood slide-out facias and comfortable furniture in luxurious fabrics accent the immense space engineered into each Savoy floorplan. Deep cabinet drawers, high-rise galley faucet and solid surface countertop create a residential surrounding. Priced right and built with the same high quality standards held by Holiday Rambler for over 55 years. **Make the perfect choice. Savoy.**



# MODEL 32RKT | WOODLAND CROSSING DECOR WITH NEWPORT CHERRY CABINETS



| FIFTH WHEEL |



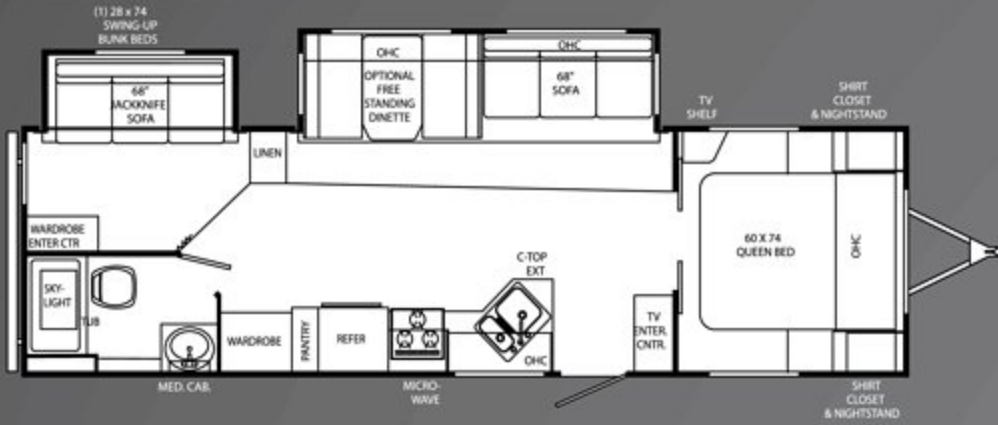
| TRAVEL TRAILER |



Savoy LX

# SAVOY LX TRAVEL TRAILERS

30BHD LXTT



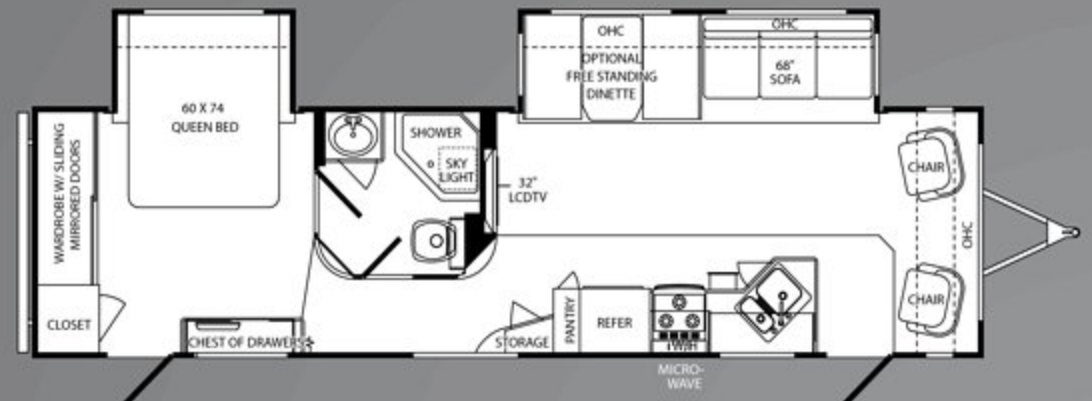
33BHD LXTT



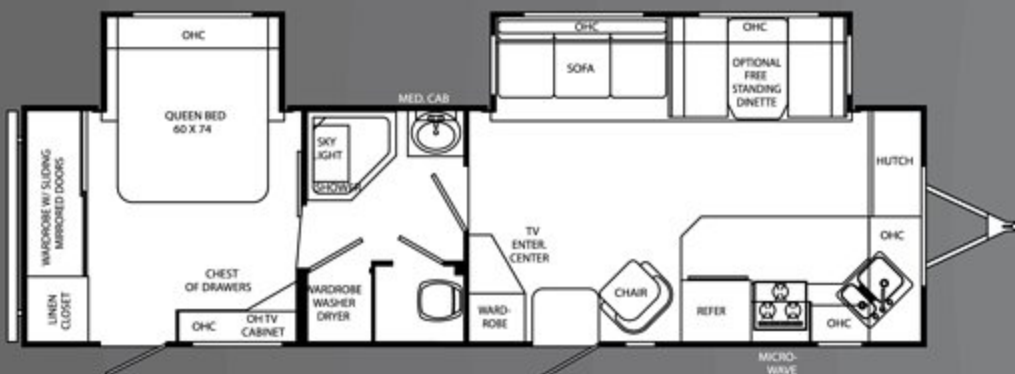
30RLS LXTT



33FLD LXTT



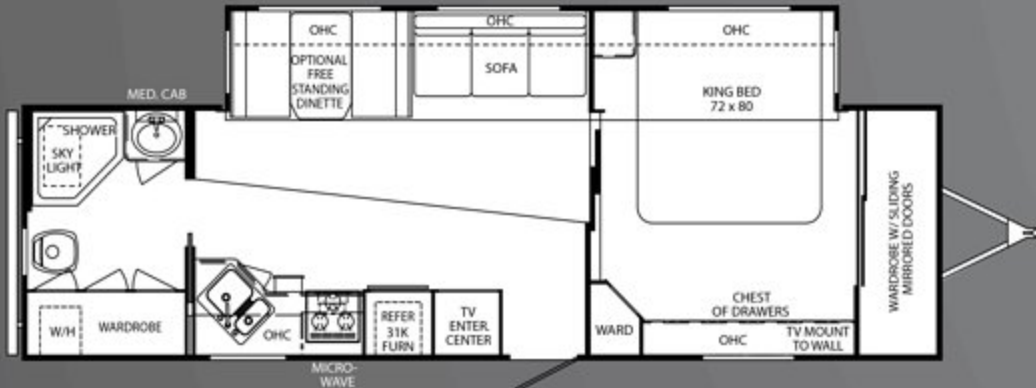
32FKD LXTT



34SKD LXTT



32RBS LXTT



## DECOR OPTIONS



GEMSTONE



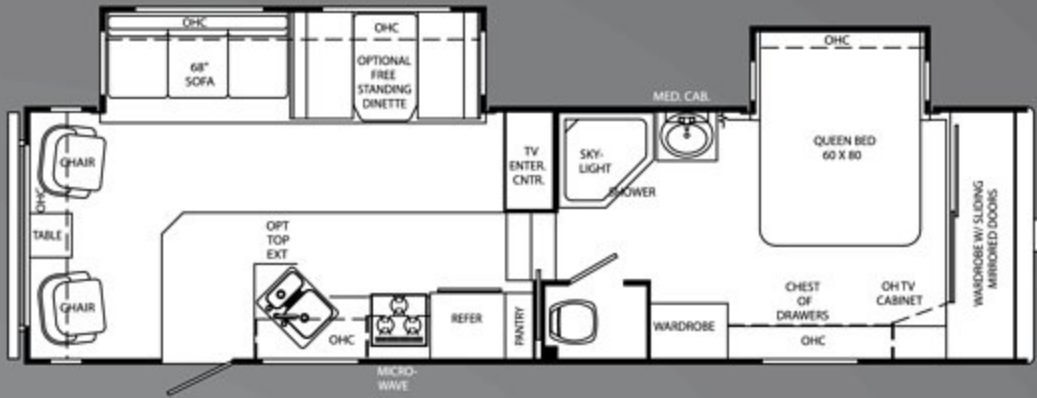
WOODLAND CROSSING



YORKTOWN GINGER

SAVOY LX FIFTH WHEELS

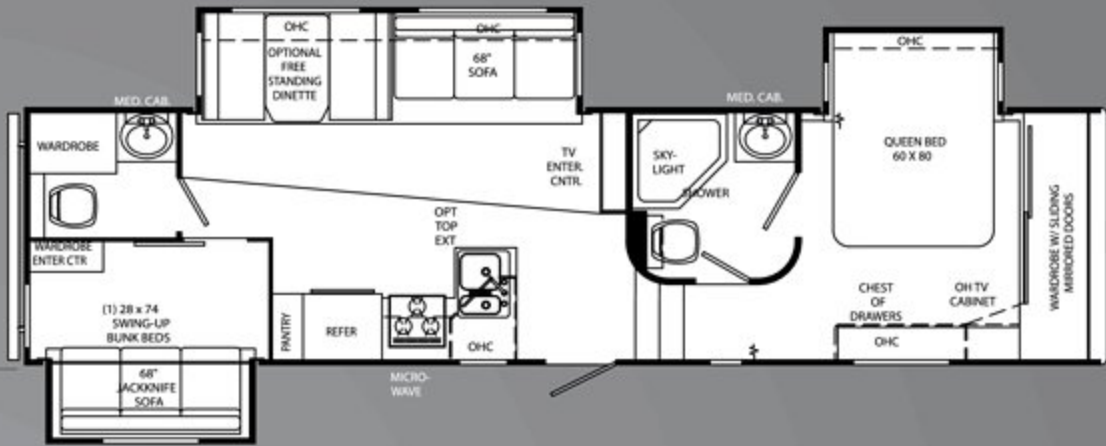
28RLD LXFV



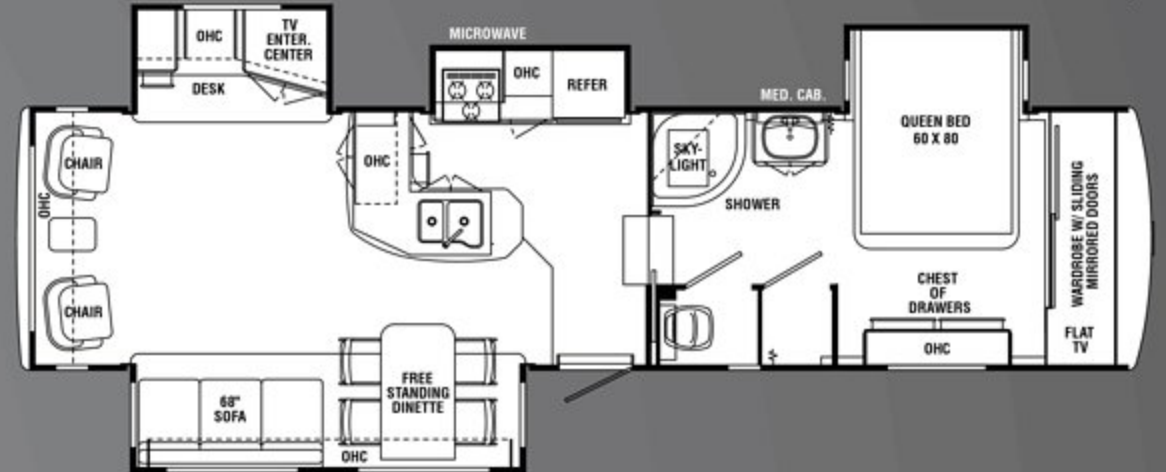
32RKT LXFV



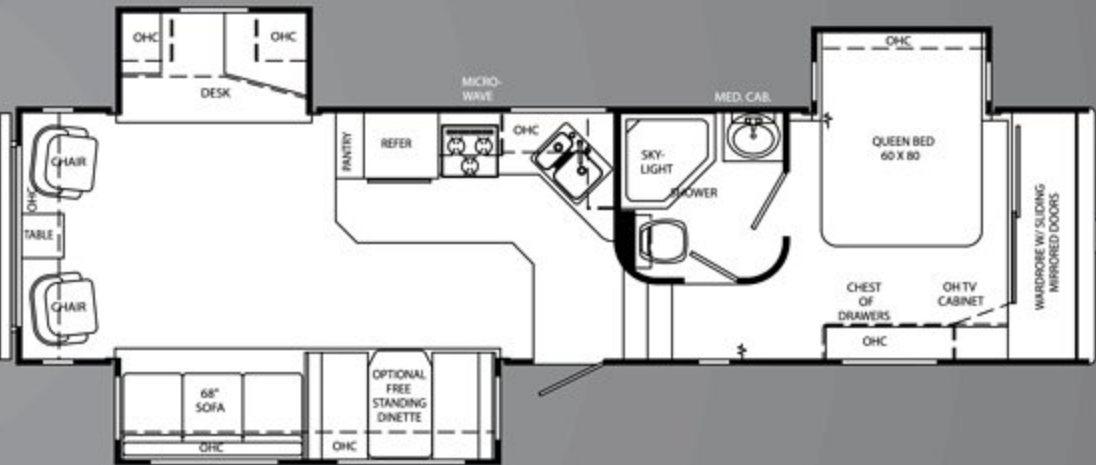
31BHT LXFV



33SKQ



31SKT LXFV



TRAVEL TRAILERS

FIFTH WHEELS

2011 Specifications	30BHD	30RLS	32FKD	32RBS	33FLD	33BHD	34SKD	28RLD	31BHT	31SKT	32RKT	33SKQ
<b>Weights</b>												
Gross Vehicle Weight Rating	10,100	10,100	10,100	10,100	10,100	TBD	10,100	12,400	12,400	12,400	12,400	12,400
Hitch Weight	740	695	1215	980	850	TBD	930	1920	1558	1882	2010	TBD
Axle(s) Weight	5200	5200	5200	5200	5200	TBD	5200	5200	5200	5200	5200	5,200
Unloaded Vehicle Weight	7370	6930	7600	7690	7885	TBD	7800	8280	9054	9072	9098	TBD
Net Carrying Capacity (NCC)	2730	3170	2500	2410	2235	TBD	2300	4120	3346	3328	3302	TBD
Tire Size	15"	15"	15"	15"	15"	15"	15"	15"	15"	15"	15"	15"
Tire Load Range	D	D	D	D	D	D	D	D	D	D	D	D
<b>Measurements</b>												
Overall Length	33'-0"	32'-6"	33'-7"	33'-7"	35'-1"	TBD	35'-3"	31'-10"	34'-0"	34'-0"	34'-3"	34'-9.75"
Overall Height (Including A/C)	11'-0"	11'-0"	11'-1"	11'-0"	11'	TBD	11'-0"	12'-3"	12'-2"	12'-2"	12'-6"	TBD
Exterior Width	98"	98"	98"	98"	98"	98"	98"	98"	98"	98"	98"	TBD
<b>Tank Capacities</b>												
Water Heater (Gal.)	6	6	6	6	6	6	6	6	6	6	6	10
Grey Tank (Gal.)	40/40	40/40	40/40	40/40	40/40	40/40	40/40	40/40	40/40	40/40	40/40	40/40
Black Tank (Gal.)	40	40	40	40	40	40	40	40	40	40	40	40
Fresh Tank (Gal.)	50	50	50	50	50	50	50	50	50	50	50	50
L.P. Tank (Lb.)	(2) 30	(2) 30	(2) 30	(2) 30	(2) 30	(2) 30	(2) 30	(2) 30	(2) 30	(2) 30	(2) 30	(2) 30

\* Weights may vary by options. \*\* Tank manufacturer's listed water capacity (WC). Actual filled LP capacity is 80% of listing due to safety shut off required on tank.



LXTT  
LXFW

LXTT  
LXFW

**BODY CONSTRUCTION: FEATURES**

• I-Beam Frame	x	x
• Stylized 15" Radial White Sport Wheels with Blk. Ctr. Hub	x	x
• Spare Tire with Sport Wheel & Vinyl Tire Cover Mounted on Bumper	x	x
• Radial Tires	x	x
• Frame Mounted Entry Step with Radius Steps	x	x
• Stabilizer Jacks	x	x
• Front Power Landing Jacks		x
• 5,200 lb. Super Lube Tandem Axles with Electric Brakes	x	x
• Heated & Enclosed Under Floor Fresh Water & Holding Tanks	x	x
• Laminated Bathroom Floor		x
• Split Storage Door Under Alcove		x
• Laminated Walls with Foam Block Insulation	x	x
• Pass-Thru Storage Under Bath Deck		x
• Flat Floor Slide-Out in Main Living Area	x	x
• Slide-Out Lock Down Arms	x	x
• Rain Gutters with Downspouts		x
• Front Molded Fiberglass Cap	x	x
• Front Cap Window Awning (N/A 32RBS, 33BHD)		x
• L.P. Tank Cover		x
• Smooth White Fiberglass Exterior Walls	x	x

**OPTIONS**

• Shock Absorbers (N/A 31BHT, 32RKT)	x	x
• Aluminum Wheels	x	x
• Sidewinder Hitch		x
• Lighted Power Hitch Jack		x
• Roof Ladder	x	x
• Canadian RV Certification	x	x

**APPLIANCES: FEATURES**

• 6 Cu. Ft. Refrigerator	x	x
• Outside Galley - Curbside Rear. Large Lift Up Door, 5 Cu. Ft. Gas/Electric Refrigerator, Sink, with OHC (30BHD Only)		x
• RVQ Grill (30BHD Only)		x
• Microwave with Touch Control	x	x
• Wedgewood High Output 3-Burner Range with Oven	x	x
• Range Hood	x	x
• Built-in Wood Knife Holder Behind Stove	x	x
• Home Theater Surround Sound System	x	x
• Winegard TV Antenna with Booster	x	x

**OPTIONS**

• 8 Cu. Ft. Refrigerator	x	x
• 10 Cu. Ft. Refrigerator	x	x
• Bi-Fold Range Cover	x	x
• 22" LCD Color TV - Living Area (N/A 33FLD)		x
• 26" LCD Color TV-Outside Galley (30BHD, 30RLS, 33BHD)		x
• 32" LCD Color TV - Living Area (33FLD Only)		x
• 26" LCD TV with HD Tuner & Mounting Bracket - Living Area (N/A 31BHT)		x
• 32" LCD TV with HD Tuner & Mounting Bracket - Living Area (31BHT Only)		x
• 19" LCD TV with Remote Control - Bedroom	x	x
• Washer/Dryer Prep - Requires 50amp Service & 10 Gal. Water Heater Option Selection (32FKD, 34SKD Only)		x

**INTERIOR: FEATURES**

• Select Cabinetry	x	x
--------------------	---	---

• Cabinet Doors - Upper cabinet doors in kitchen and living area are raised panel doors with top arch. Lower cabinet doors are square frame doors with flat panel insert. Upper cabinet doors in bath and bedroom are flat panel arched.	x	x
• Raised Panel Refrigerator Insert doors	x	x
• Full Extension Roller Bearing Drawer Guides Throughout	x	x
• Traditional Harvest Wall Board		x
• Wallpaper Border in Kitchen and Bath	x	x
• Molded Kitchen Counter Top	x	x
• Kitchen Sink Cover	x	x
• Pantry with Adjustable Shelves (N/A 32RBS, 33BHD)	x	x
• Woodgrain Molding at Ceiling Throughout	x	x
• Linoleum in Kitchen, Bath & Entry	x	x
• Woodgrain Passage Doors (N/A 30RLS, 32RBS, 33BHD)	x	x
• Fabric Pleated Folding Door Close-off Bath Area to Bedroom (33FLD, 33BHD, 28RLD, 31SKT, 31BHT, 32RKT)	x	x
• Woodgrain Door Close-off Bath Area to Bedroom (N/A 33FLD, 33BHD)		x
• Laundry Hamper Chute with Laundry Basket (N/A 32FKD, 32RBS, 33FLD, 34SKD)	x	x
• Bedroom Mirror Wardrobe (N/A 30BHD, 30RLS, 33BHD)	x	x
• Pleated Day/Blackout Shades in Living Area and Bedroom	x	x

**OPTIONS**

• Decors: Gemstone, Yorktown Ginger, Woodland Crossing	x	x
• Wood Cabinetry Color Selection: Newport Cherry or Golden Select	x	x
• Kitchen Counter Top Extension (N/A 32FKD, 32RBS, 31SKT, 32RKT)	x	x
• Designer Accessory Package	x	x

**FURNITURE: FEATURES**

• Queen Bed with Nightstands (60x74) (N/A 32RBS)		x
• Queen Bed in Bedroom Slide-Out (60x80)		x
• King Bed with Nightstands (72x80) (32RBS Only)		x
• Jackknife Sleeper Sofa	x	x
• Second Living Area Jackknife Sofa in Slide-Out (30BHD, 33BHD Only)		x
• Curbside Jackknife Sofa in Slide-Out (31BHT Only)		x
• Swing-Up Bunk Bed (30BHD, 31BHT Only)	x	x
• (1) One Swivel Barrel Chair (32FKD Only)		x
• (2) Two Swivel Barrel Chairs (N/A 30BHD, 32FKD, 32RBS, 33BHD, 31BHT)	x	x
• Wood Booth Dinette with Arched Back Cushions	x	x
• (2) Two Bar Stools in Kitchen (32RKT Only)		x
• Second Living Area Wood Booth Dinette with Arched Back Cushions (33BHD Only)		x

**OPTIONS**

• Hide-A-Bed Sofa with Air Mattress	x	x
• (1) One Ultima Vinyl Euro Chair with Ottoman (32FKD Only)		x
• (2) Two Ultima Vinyl Euro Chairs with Ottoman (N/A 30BHD, 32FKD, 32RBS, 31BHT, 33BHD)	x	x
• High Back Desk Chair (31SKT Only)		x
• Free-Standing Dinette Table with Four Wood Chairs	x	x

**ELECTRICAL SYSTEMS AND LIGHTS: FEATURES**

• Electrical Management System - 30AMP	x	x
• (2) Two Exterior Security Lights with Switch	x	x
• Battery Disconnect & Battery Box		x
• Decorative Wall Light(s) in Living Area	x	x
• Decorative Ceiling Mount Dinette Light	x	x

Due to continuous product improvement, please see the website for the latest in standards and options, specifications, and technical data. *Go to [www.holidayrambler.com](http://www.holidayrambler.com).*

LXTT  
LXFW

• Decorative Swivel Bullet Lights on Overhead Cabinet Above Bed	x	x
• Decorative Swivel Bullet Lights on Bottom of Overhead Cabinet in Living Room at Chair Locations (N/A 31BHT)	x	

**OPTIONS**

• Solar Wire Prep	x	x
• 50 Amp Service Required with Washer & Dryer Prep (32FKD, 34SKD Only)	x	
• 50 Amp Service with 2nd A/C Prep (N/A 30BHD, 30RLS, 28RLD)	x	x
• 50 Amp Service Required Selection with Seconzd 13.5 A/C Option (N/A 28RLD)	x	

**PLUMBING AND LP SYSTEMS: FEATURES**

• Deep Double Bowl Kitchen Sink with High Profile Double Handle Faucet	x	x
• Bathroom Sink with Single Handle Brushed Nickel Faucet	x	x
• ABS Tub with Surround and Glass Door (30BHD, 33BHD Only)	x	
• ABS Neo-angle Shower with One-Piece Surround with Glass Door (N/A 33BHD)	x	x
• Shower Faucet with Shower Hose and Head with Shut-off	x	x
• 6-Gallon L.P. Gas/Electric Water Heater with Electronic Ignition	x	x
• Two 30 lb. L.P. Tanks with Automatic Changeover and Cover	x	x
• ABS L.P. Bottle Cover	x	
• Centralized Water Management System (Water Fill, Water Pump Switch, 3-Fill Valves, Outside Shower and Access Door)	x	x
• Water Heater By-Pass	x	x
• Aluminum Bumper Cover - Sewer Hose Storage Tube	x	x

LXTT  
LXFW

**OPTIONS**

• No-Fuss Flush Holding & Tank Rinsing System	x	x
• 10-Gallon L.P. Gas/Electric Water Heater with Electronic Ignition (N/A 30BHD, 30RLS)	x	x

**HEATING, VENTS AND AIR CONDITIONING: FEATURES**

• Carrier 13,500 BTU Rooftop Air Conditioner with Remote Control	x	x
• 30M BTU Hydroflame Electronic Ignition Furnace	x	x
• In-Floor Ducted Heating System - Register in Bathroom	x	x

**OPTIONS**

• Carrier 15,000 BTU Rooftop A/C ILO 13,500 BTU with Remote Control	x	x
• Second Carrier 13,500 BTU Rooftop A/C with Remote Control Requires Selection of 50 Amp Service Option (N/A 30BHD, 30RLS, 28RLD)	x	x
• Ceiling Fan		x

**WINDOWS, DOORS AND AWNINGS: FEATURES**

• Tinted Radius Windows with Safety Glass	x	x
• Tinted Skylight in Bathroom	x	x
• Front Cap Window Awning (N/A 32RBS, 33BHD)	x	
• Swing Out Entry Door Handle	x	x

**OPTIONS**

• Power Electric Awning	x	x
-------------------------	---	---

**SAVOY LX FEATURES**

- Optional Hide-A-Bed sofa with electric air mattress
- Optional high back solid wood chairs with convenient under cushion storage
- Optional free-standing dinette table and chairs with convenient storage under the table top
- Water management system with integrated hot/cold water outside shower
- Enormous outside pass-thru storage with access from either side or front





HOLIDAY RAMBLER®

*This is Living®*

## BEING DIFFERENT MAKES ALL THE DIFFERENCE.

At Holiday Rambler, it's our goal for all our customers to enjoy their RV experience from the beginning. We have forged strong, reliable relationships with our dealer partners, and we encourage our customers to do the same. We're proud to boast a large network of dealership partners and service centers across North America. We're confident that this relationship will only enhance your RV experience and provide the added peace of mind you desire, so you can focus on the important stuff. After all, we're not just selling a world-class product, we're selling "fun". You can rest assured, Holiday Rambler will be along for the ride, every mile your RV adventure takes you.

The actual overall length of the recreational vehicle may differ from that indicated in the brochure due to variances in the manufacturing process and/or installed components. The actual length may be greater or less than that indicated. Due to the large variety of options and floorplan arrangements available to our customers, actual weights for each unit can differ significantly. Monaco provides a weight sticker on each unit we produce which includes that unit's tank capacities and approximate weight. Consult your local Monaco dealer for unit availability and further information. The information printed in this brochure reflects product design, fabrication, and component parts at the date of printing. The manufacturer reserves the right, at any time, to make changes in product design or material or component specifications as its sole option, without notice. This includes the substitution of components of a different brand or trade name which will result in comparable performance. All information printed in this brochure is subject to change after the date of printing. Some features shown or mentioned in this brochure are optional and may only be available in selected floorplans. Photographs may show props or decorations that are not standard equipment. Monaco, the Monaco logo and its design, are registered trademarks. Other products and company names are trademarks and/or registered trademarks of their respective holders. While the color of the motorhome's exterior and the interior fabrics depicted in this sales brochure are fair and reasonable depictions, the colors depicted may not be an exact match of the actual colors because of the variances in photo-processing and printing. Due to product improvements, changes during the model year and/or transcription errors that may occur, information represented within this brochure may not be accurate at the time of your purchase. If certain information is significant to your purchasing decision, please confirm the information with your dealer. Component part and appliance manufacturers issue limited warranties covering portions of the recreational vehicle not covered under the Limited Warranties issued by Monaco RV, LLC. To learn specific details regarding warranty coverage, please contact your selling dealership or review the warranty packet inside the recreational vehicle.