



Shown in Lava Décor



Toy Haulers

## MXT301

With a corner queen bed, sofa slide and wall divider, the MXT301 offers features normally only found in much larger sport utility trailers. KZ's long standing tradition of excellence, value and toughness come together in a package that is hard to match. With 5 exciting floor plans to choose from – select a model that suits your needs, then customize with our select group of options.





## Standards

- Four stabilizer jacks
- Cable prep
- Aluminum wheels
- Patio awning
- Spare tire/carrier/cover
- Outside spray port
- Two burner range
- European OH cabinet doors
- Removable ABS pullout trays
- Gas bottle cover
- Security light
- Ramp door light
- AM/FM/CD player
- Mini blinds
- 6 cu refrigerator
- Work bench (where available)
- Tub surround

- Convection oven
- Generator tray
- Tinted windows
- Ramp extension & legs
- 13,500 btu a/c
- Pull down screen wall

## Options

- Sport Entertainment Package #1
- Sport Entertainment Package #2 (N/A on 184 and 20)
- Outside Speakers (Included in Sport Ent. Package #1 and #2)
- Outside Grill
- Heat Strip
- Fuel Cell with Pump Station
- Paint Package
- Flip Up Full Size Bed (N/A on 20 and 264)

- Power Awning
- 2nd Flip Jiffy (184 Only) (N/A with Chair)
- Chair (1 or 2) (184 Only) (N/A with 2nd Jiffy)
- Power Bed (184, 266 or 301)
- Sit'n Sleep (184, 266 or 301) (Must Option Power Bed)

## Sport Entertainment Package #1

- Sony AM/FM/CD with USB Port
- Sony 4-Channel Amp
- Sony 6-1/2" Coax Speakers
- Sony 6-1/2" Coax Speakers Outdoor
- Sony 10" Subwoofer
- Sony Marine Remote
- Speaker Box

## Sport Entertainment Package #2

- Sony AM/FM/CD with USB Port
- DVD Player
- Mount Sleeve
- Sony 4-Channel Amp
- Sony 6-1/2" Coax Speakers
- Sony 6-1/2" Coax Speakers Outdoor
- Sony 10" Subwoofer
- Sony Marine Remote
- Speaker Box
- 19" LCD TV
- LCD Mount



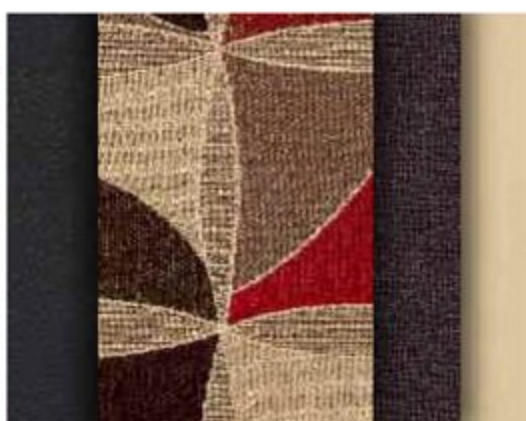
**Adobe Décor**  
Maple Wood Color Cabinetry



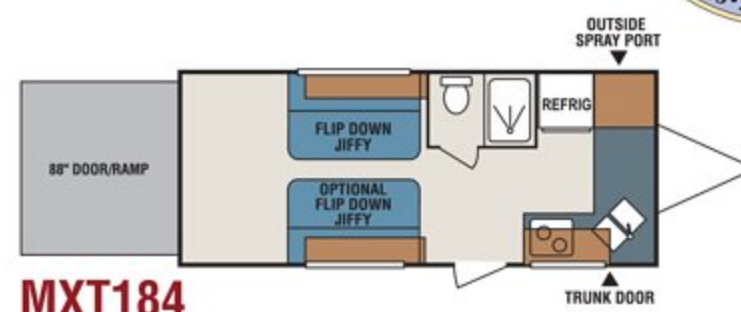
**Earth Décor**  
Maple Wood Color Cabinetry



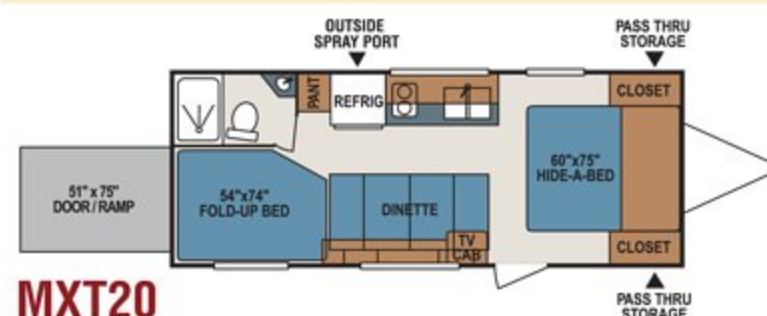
**Lava Décor**  
Satin Wood Color Cabinetry



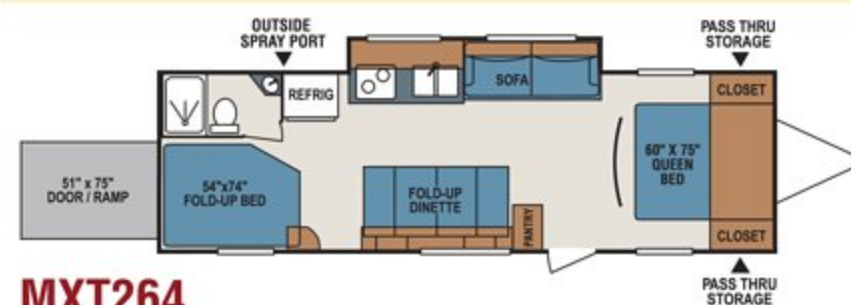
**Wheat Décor**  
Maple Wood Color Cabinetry



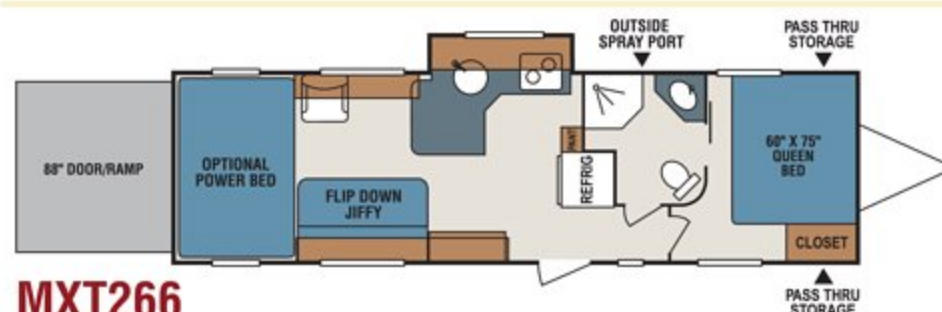
**MXT184**



**MXT20**



**MXT264**



**MXT266**



**MXT301**

Dealer:

SPECIFICATIONS	MXT184	MXT20	MXT 264	MXT 266	MXT 301
Axle Weight*	3,626	3,643	5,259	4,982	4,857
Dry Hitch Weight*	508	500	741	825	830
UVW (Unloaded Vehicle Weight)*	4,134	4,143	6,000	5,807	5,687
GVWR	7,000	7,000	8,800	8,800	8,800
NCC (Net Carrying Capacity)	2,866	2,857	3,371	2,990	3,113
Exterior Height with AC	10' 5 1/2"	10' 5 1/2"	10' 5 1/2"	10' 5 1/2"	10' 5 1/2"
Exterior Length	24' 4 1/2"	24' 5 1/2"	31' 10"	32' 10 1/2"	32' 9 1/2"
Exterior Width	96"	96"	96"	96"	96"
Fresh Water Cap. (gal.)	50	50	100	100	100
Black Water Cap. (gal.)	32	32	32	32	32
Gray Water Cap. (gal.)	32	32	32	32	32
Furnace BTUs (1,000's)	20	20	20	25	25
LP Gas Cap. (lbs.)	40	40	40	40	40
Interior Height	78"	78"	78"	78"	78"
Tire Size (Radial)	14"	14"	15"	15"	15"
Awning	13'	16'	15'	15'	16'
Water Heater (Gas/Elec. DSI) (gal.)	6	6	6	6	6

\*This weight reflects the average unit weight for a 5 month period for each model. Your trailer weight will vary according to optional equipment.

**ASK ABOUT  
OUR 2-YEAR WARRANTY!**

For more product details and in-depth information, visit us on the web at **www.kz-rv.com**

0985 N 900 W • Shipshewana, IN 46565  
E-Mail [kz@kz-rv.com](mailto:kz@kz-rv.com) • [www.kz-rv.com](http://www.kz-rv.com)



Due to continual research and advances, manufacturer reserves the right to change specifications, design, price and equipment without notice, and assumes no responsibility for any error in this literature. Some items shown are not included as standard or optional equipment.  
©2010KZ | 01/12/11 | 10M