



MONACO®

DRIVING YOUR DREAM.



MONACO®

DRIVING YOUR DREAM.

SMART. STYLISH.
A TRUE DIPLOMAT.

The 2011 Diplomat has arrived — and it's more powerful and luxurious than ever. Beginning with the Roadmaster RR10R chassis with tag axle, standard on all models, along with a powerful standard Cummins® ISL 425 horsepower engine, this beauty really brings the muscle. And prepare to be wowed with the Diplomat's four new creative floorplans, including a full-wall slide, bath-and-a-half and five-slide designs, along with ceramic tile throughout the living area, kitchen and bath, hardwood cabinetry, and safety-minded features everywhere. *(Pictured: 43DFT/Thoroughbred/Newport Cherry)*



SMART. STYLISH.
A TRUE DIPLOMAT.

The 2011 Diplomat has arrived — and it's more powerful and luxurious than ever. Beginning with the Roadmaster RR10R chassis with tag axle, standard on all models, along with a powerful standard Cummins® ISL 425 horsepower engine, this beauty really brings the muscle. And prepare to be wowed with the Diplomat's four new creative floorplans, including a full-wall slide, bath-and-a-half and five-slide designs, along with ceramic tile throughout the living area, kitchen and bath, hardwood cabinetry, and safety-minded features everywhere. *(Pictured: 43DFT/Thoroughbred/Newport Cherry)*





PAMPERED CHEF.

Every thoughtful detail and decorative touch says Diplomat luxury. Nowhere is this more evident than in the kitchen, with polished radius solid surface countertops and stainless steel sink, backsplashes in decorative ceramic tile with glass accents, and a handy pull-out countertop extension with drawers (on all models). Impressive options include a residential refrigerator on all floorplans, and the ultimate convenience — a central vacuum system. *(Pictured: 43DFT/Thoroughbred/Newport Cherry)*



PAMPERED CHEF.

Every thoughtful detail and decorative touch says Diplomat luxury. Nowhere is this more evident than in the kitchen, with polished radius solid surface countertops and stainless steel sink, backsplashes in decorative ceramic tile with glass accents, and a handy pull-out countertop extension with drawers (on all models). Impressive options include a residential refrigerator on all floorplans, and the ultimate convenience — a central vacuum system. *(Pictured: 43DFT/Thoroughbred/Newport Cherry)*





BED, BATH-AND-A-HALF AND BEYOND

Diplomat's luxurious bedroom features beautiful raised panel hardwood cabinetry throughout, plush carpet, day/night pleated blackout shades, solid surface nightstands and a large 26-inch LCD television (with optional DVD player). Another nice touch includes the stackable washer/dryer option. The 42PAQ and

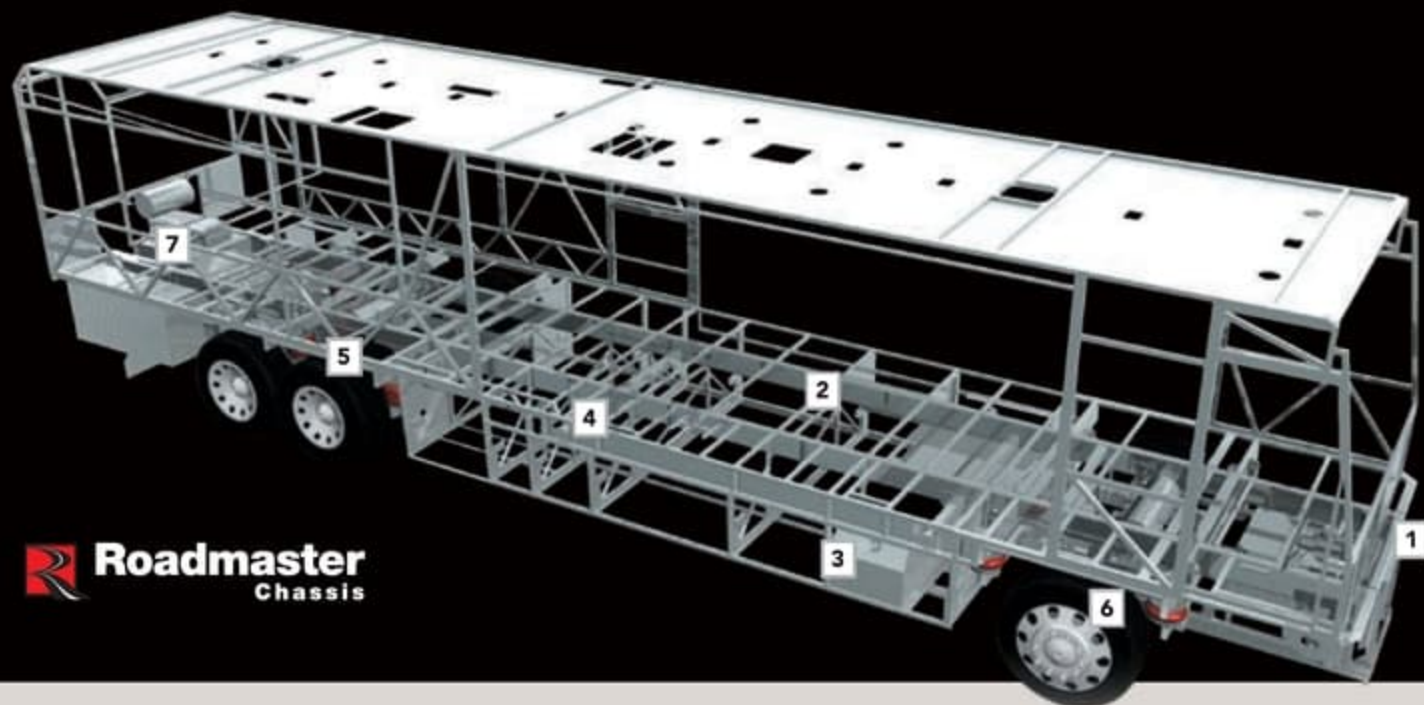
43DFT are bath-and-a-half floorplans that feature a full private bath beyond the bedroom (shown above). Highlights include a one-piece round shower, double vanity with solid surface countertop and tile backsplash, along with plenty of storage. (Pictured: 43DFT/Thoroughbred/Newport Cherry)



BED, BATH-AND-A-HALF AND BEYOND

Diplomat's luxurious bedroom features beautiful raised panel hardwood cabinetry throughout, plush carpet, day/night pleated blackout shades, solid surface nightstands and a large 26-inch LCD television (with optional DVD player). Another nice touch includes the stackable washer/dryer option. The 42PAQ and

43DFT are bath-and-a-half floorplans that feature a full private bath beyond the bedroom (shown above). Highlights include a one-piece round shower, double vanity with solid surface countertop and tile backsplash, along with plenty of storage. (Pictured: 43DFT/Thoroughbred/Newport Cherry)



Roadmaster
Chassis

ROADMASTER RR10R RAISED RAIL CHASSIS

(Roadmaster RR10R Tag Axle: 42PAQ, 43DFT, 43PKQ AND 43PD5)

1 Every Roadmaster chassis features a **steel firewall** for added protection in the cockpit.

2 The main rails feature an exclusive **raised rail design** which provides for larger full pass-through storage bays with flush floors. Other highlights include a 3/8" thick frame rail — compared to the 1/4" of other manufacturers — and a stacked aluminum intercooler and radiator for optimum heat transfer and cooling.

3 **Dual fuel fill** allows you to fill the tank from either side of the coach, for greater convenience and flexibility at the pump.

4 The **steel truss system** is engineered as part of the chassis and provides

outstanding strength and rigidity plus pass-through storage. In addition, the structure is pre-primed and coated with a rust-inhibiting paint for extra protection.

5 **Cushion Air Glide Suspension** features ten air bags (eight outboard-mounted) and ten shock absorbers on all coach lengths.

Monitored leveling sensors continually adjust the air pressure at each axle to maintain a level ride and eliminate nosediving, weight transfer, and floating on curved roads. This system also stabilizes the coach on uneven surfaces.



6 **Automatic Traction Control (ATC)** eliminates wheel slippage in slick conditions and heightens control. The **Anti-Lock Braking System (ABS)** gives you superior stopping power, especially on steep grades. Together, these sophisticated systems offer the very best safety on the road.

7 The Diplomat features a gutsy standard **Cummins® ISL 425** horsepower engine with **Allison® 3000 MH 6-speed World Transmission** and electronic shifter. A **10,000 lb. tow hitch** is the highest rating in its class.

THE ULTIMATE FOUNDATION.

Take the wheel of a luxury motorhome, and you're taking the wheel of the chassis it rides on. That's why Diplomat rides exclusively on a Roadmaster chassis that is custom built to deliver the very best diesel motorhome experience. Roadmaster's construction utilizes advanced design and engineering to distribute stress evenly throughout the entire chassis, reducing the possibility of twisting and increasing durability and reliability. It's really the ultimate foundation for a luxury ride.

CUMMINS POWER

For 2011, the Diplomat boasts a powerful **Cummins® ISL 425** HP diesel engine with 1,200 lbs./ft. of torque standard on all four floorplans.



ROOF CONSTRUCTION

(top to bottom)

- One-piece peaked fiberglass roof
- Luaun backing
- Thick, tapered bead foam insulation
- Aluminum double I-beam superstructure filled with fiberglass insulation
- Vapor barrier
- Structure foam: thermal insulative barrier
- 1/2" bead foam insulation
- Foam padding for extra insulation
- Padded vinyl ceiling



SIDEWALL CONSTRUCTION

(left to right)

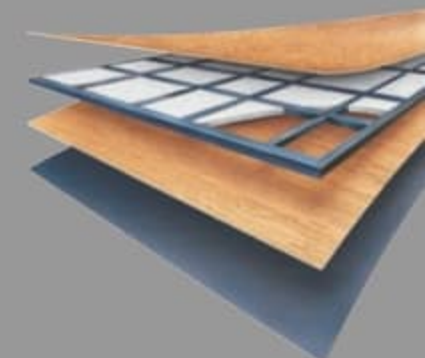
- Wallpaper
- Décor board
- 1-1/2" x 1-1/2" square tubular aluminum frame
- High performance thermal insulation
- Gel coat fiberglass composite sidewall



FLOOR CONSTRUCTION

(top to bottom)

- Structurwood™
- 1-1/2" tube
- High-performance thermal insulation foam
- Luaun
- 3-ply backer



AROUND-THE-CLOCK SERVICE AND SUPPORT

When you take delivery of your new recreational vehicle, it's just the beginning of our exclusive around-the-clock Owner Advantage Program. We offer an extensive support program that provides complete roadside assistance and special motor club benefits that follow you wherever your travels take you. We've teamed up with the largest RV emergency road service company in the country to give you immediate access to fast, dependable service when and where you need it. Add our toll-free service appointment assistance, plus a technical assistance hotline, and you have the security of full-time support at your fingertips.

For details, call toll-free (877) 211-8135

WARRANTIES

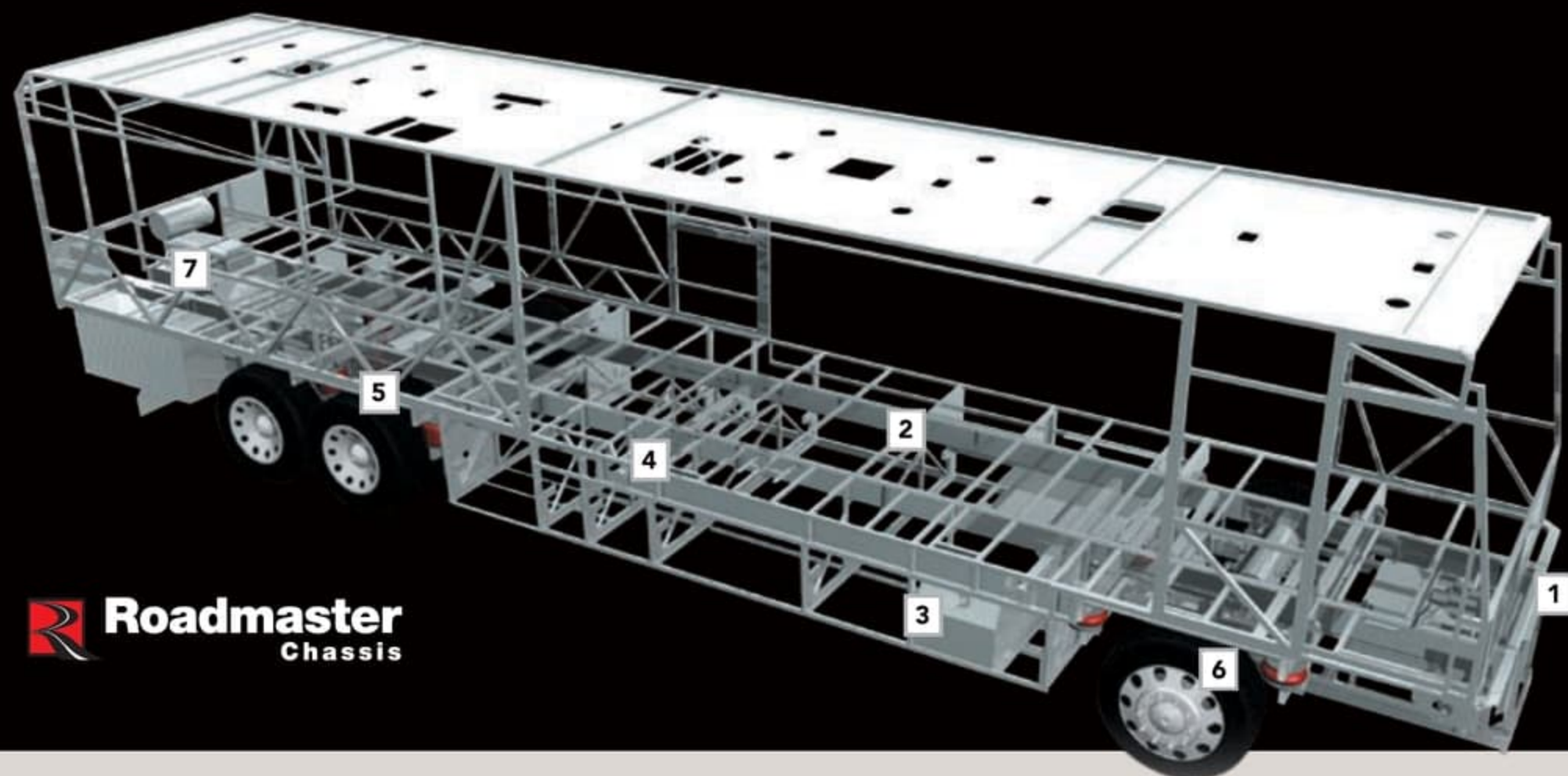
12 month/24,000 mile basic limited warranty

5 year/50,000 mile limited warranty on aluminum or steel frame structure

3 year/50,000 mile limited warranty on Roadmaster Chassis

(*Review your coach's limited warranty in full for complete terms and conditions.)





Roadmaster
Chassis

ROADMASTER RR10R RAISED RAIL CHASSIS

(Roadmaster RR10R Tag Axle: 42PAQ, 43DFT, 43PKQ AND 43PD5)

1 Every Roadmaster chassis features a **steel firewall** for added protection in the cockpit.

2 The main rails feature an exclusive **raised rail design** which provides for larger full pass-through storage bays with flush floors. Other highlights include a 3/8" thick frame rail — compared to the 1/4" of other manufacturers — and a stacked aluminum intercooler and radiator for optimum heat transfer and cooling.

3 **Dual fuel fill** allows you to fill the tank from either side of the coach, for greater convenience and flexibility at the pump.

4 The **steel truss system** is engineered as part of the chassis and provides

outstanding strength and rigidity plus pass-through storage. In addition, the structure is pre-primed and coated with a rust-inhibiting paint for extra protection.

5 **Cushion Air Glide Suspension** features ten air bags (eight outboard-mounted) and ten shock absorbers on all coach lengths.

Monitored leveling sensors continually adjust the air pressure at each axle to maintain a level ride and eliminate nosediving, weight transfer, and floating on curved roads. This system also stabilizes the coach on uneven surfaces.



6 **Automatic Traction Control (ATC)** eliminates wheel slippage in slick conditions and heightens control. The **Anti-Lock Braking System (ABS)** gives you superior stopping power, especially on steep grades. Together, these sophisticated systems offer the very best safety on the road.

7 The Diplomat features a gutsy standard **Cummins® ISL 425** horsepower engine with **Allison® 3000 MH 6-speed World Transmission** and electronic shifter. A **10,000 lb. tow hitch** is the highest rating in its class.

THE ULTIMATE FOUNDATION.

Take the wheel of a luxury motorhome, and you're taking the wheel of the chassis it rides on. That's why Diplomat rides exclusively on a Roadmaster chassis that is custom built to deliver the very best diesel motorhome experience. Roadmaster's construction utilizes advanced design and engineering to distribute stress evenly throughout the entire chassis, reducing the possibility of twisting and increasing durability and reliability. It's really the ultimate foundation for a luxury ride.

CUMMINS POWER

For 2011, the Diplomat boasts a powerful Cummins® ISL 425 HP diesel engine with 1,200 lbs./ft. of torque standard on all four floorplans.



ROOF CONSTRUCTION

(top to bottom)

- One-piece peaked fiberglass roof
- Luaun backing
- Thick, tapered bead foam insulation
- Aluminum double I-beam superstructure filled with fiberglass insulation
- Vapor barrier
- Structure foam: thermal insulative barrier
- 1/2" bead foam insulation
- Foam padding for extra insulation
- Padded vinyl ceiling



SIDEWALL CONSTRUCTION

(left to right)

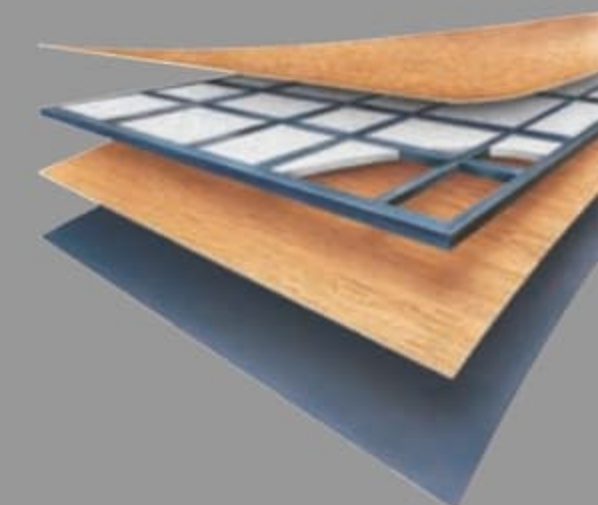
- Wallpaper
- Décor board
- 1-1/2" x 1-1/2" square tubular aluminum frame
- High performance thermal insulation
- Gel coat fiberglass composite sidewall



FLOOR CONSTRUCTION

(top to bottom)

- Structurwood™
- 1-1/2" tube
- High-performance thermal insulation foam
- Luaun
- 3-ply backer



AROUND-THE-CLOCK SERVICE AND SUPPORT

When you take delivery of your new recreational vehicle, it's just the beginning of our exclusive around-the-clock Owner Advantage Program. We offer an extensive support program that provides complete roadside assistance and special motor club benefits that follow you wherever your travels take you. We've teamed up with the largest RV emergency road service company in the country to give you immediate access to fast, dependable service when and where you need it. Add our toll-free service appointment assistance, plus a technical assistance hotline, and you have the security of full-time support at your fingertips.

For details, call toll-free (877) 211-8135

WARRANTIES

12 month/24,000 mile basic limited warranty

5 year/50,000 mile limited warranty on aluminum or steel frame structure

3 year/50,000 mile limited warranty on Roadmaster Chassis

(*Review your coach's limited warranty in full for complete terms and conditions.)



MAKE IT ALL YOUR OWN.

Choosing the Diplomat was easy. Now, it's time to make it all your own. For 2011, we're pleased to present an array of décor and cabinetry styles and combinations, not to mention three creative new floorplans in lengths of 42 and 43 feet from which to choose, including full-wall slide, bath-and-a-half and five-slide designs.



NEWPORT CHERRY



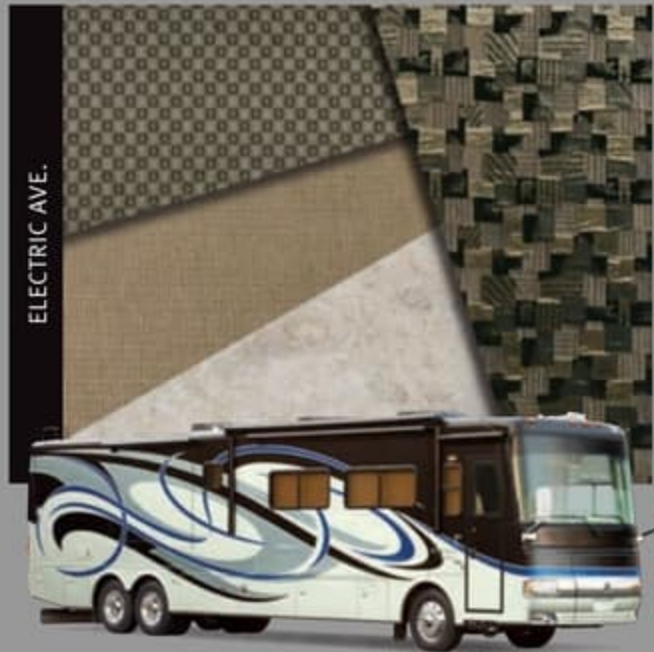
NEWPORT CHERRY GLAZE



THOROUGHBRED II

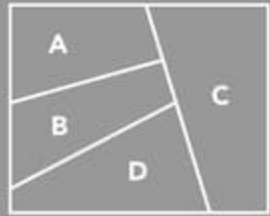


LUNAR ECLIPSE



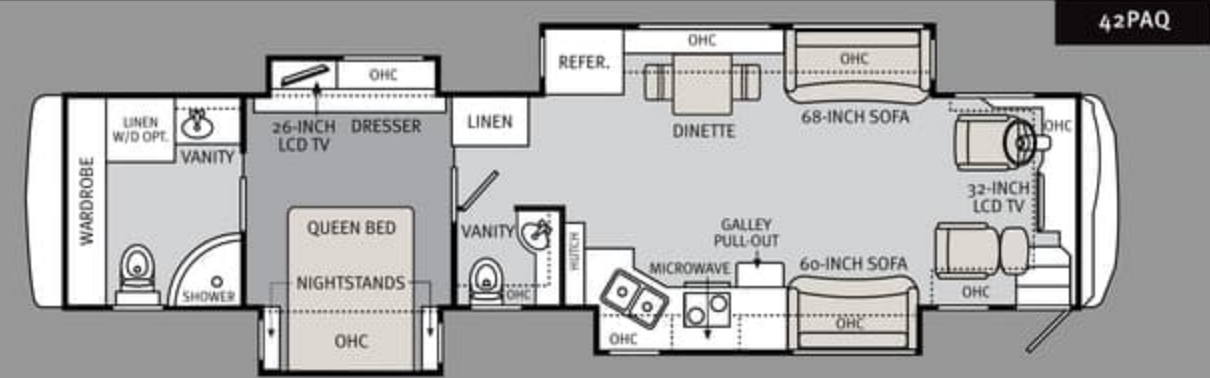
ELECTRIC AVE.

- A. BEDSPREAD
- B. SOFA
- C. ACCENT
- D. TILE

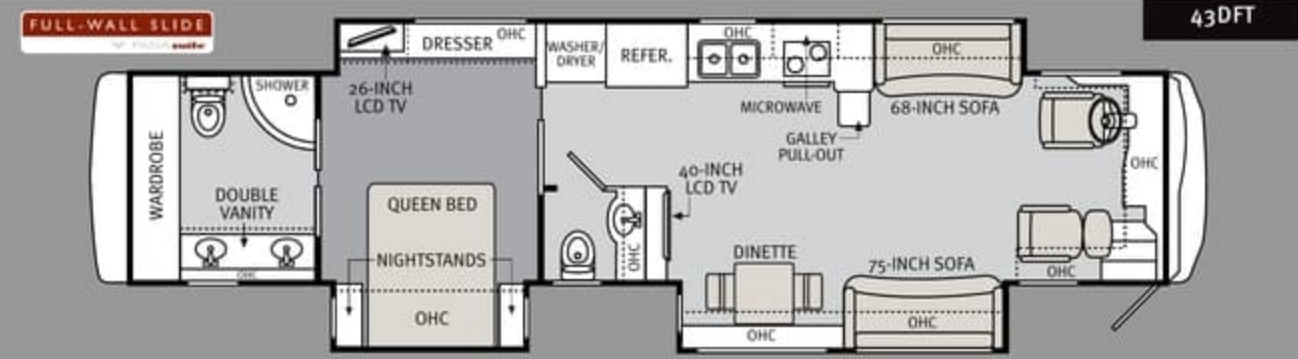


Note: Colors depicted are a reasonable representation though they may not be an exact match of the actual colors due to variances in processing and production. See your dealer for actual fabric and paint chip samples.

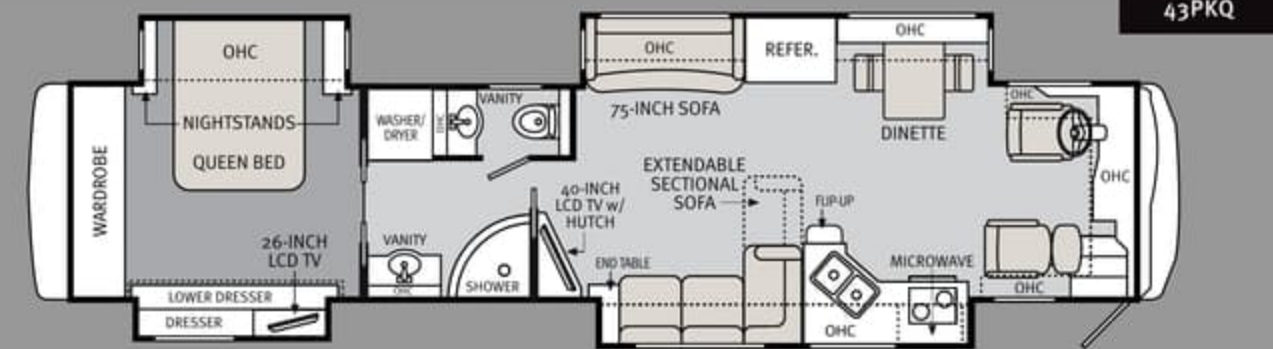
Carpet Tile



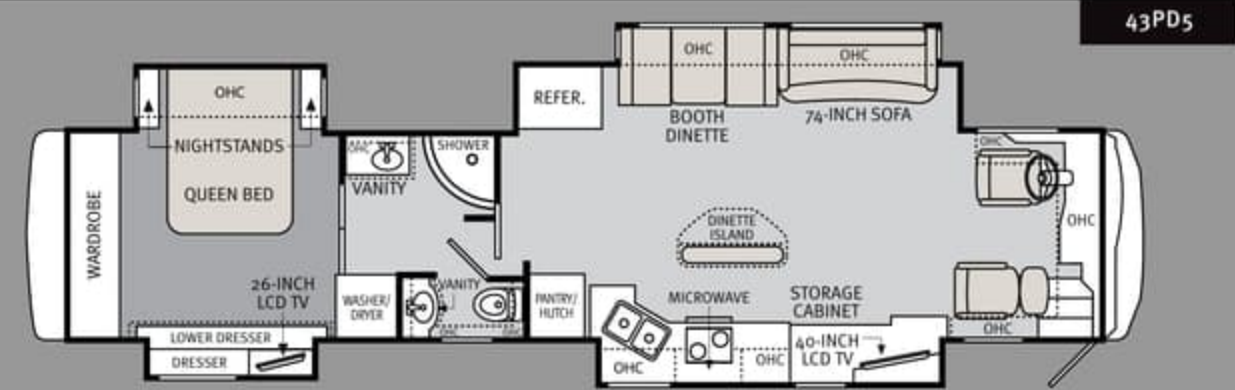
42PAQ



43DFT



43PKQ



43PD5

MAKE IT ALL YOUR OWN.

Choosing the Diplomat was easy. Now, it's time to make it all your own. For 2011, we're pleased to present an array of décor and cabinetry styles and combinations, not to mention three creative new floorplans in lengths of 42 and 43 feet from which to choose, including full-wall slide, bath-and-a-half and five-slide designs.



NEWPORT CHERRY



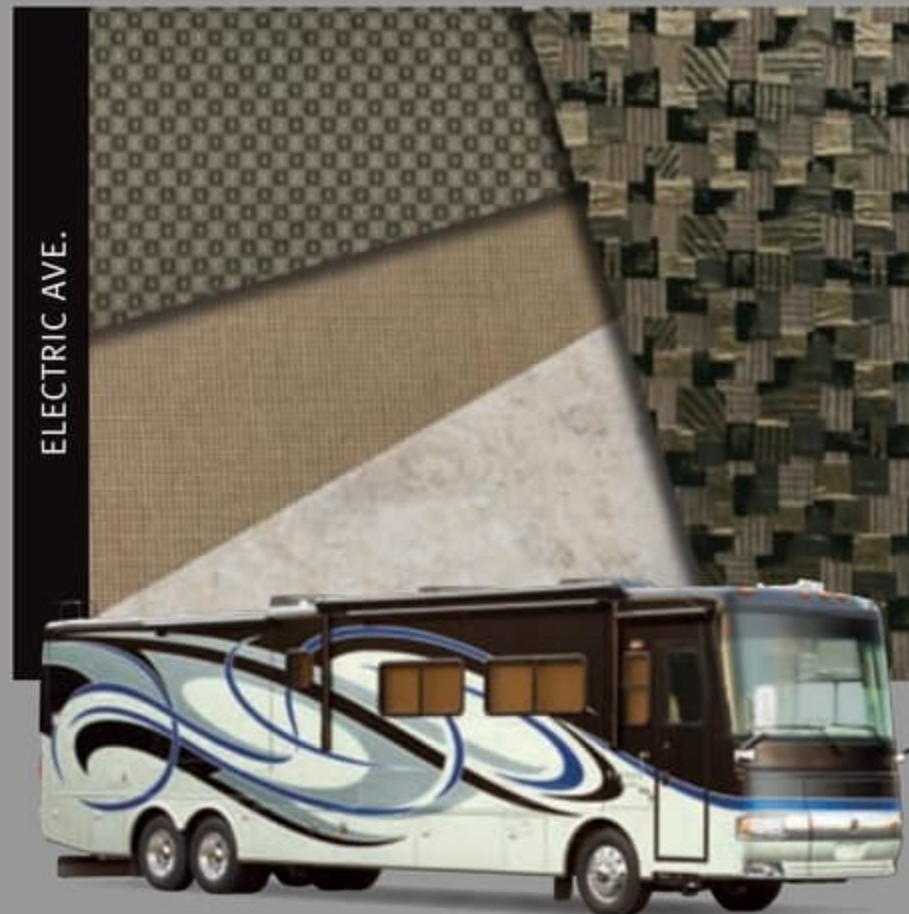
NEWPORT CHERRY GLAZE



THOROUGHBRED II

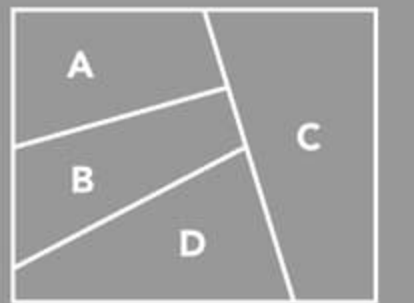


LUNAR ECLIPSE



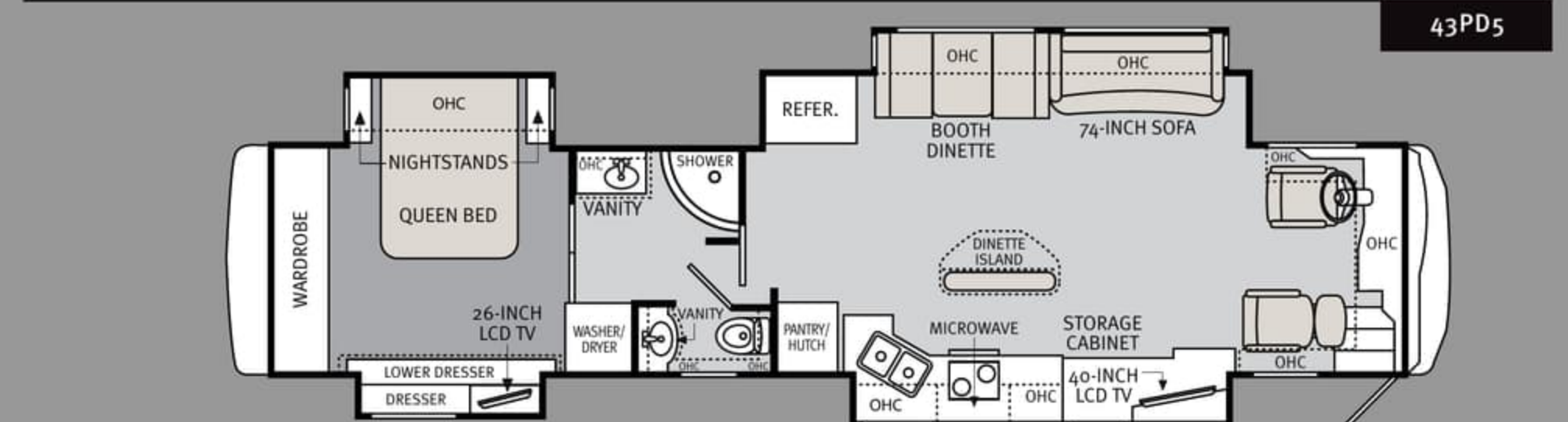
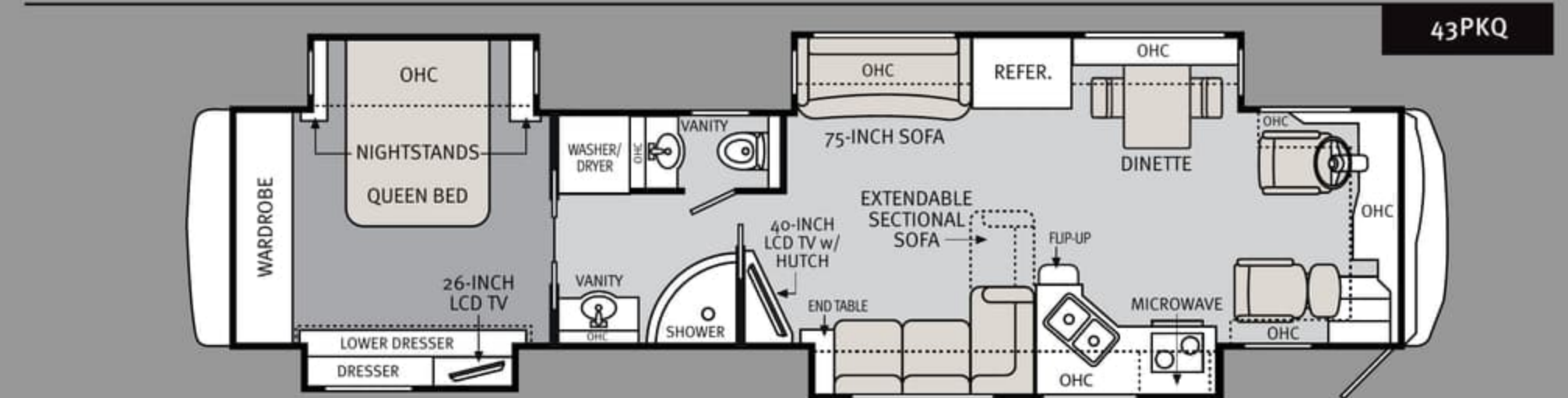
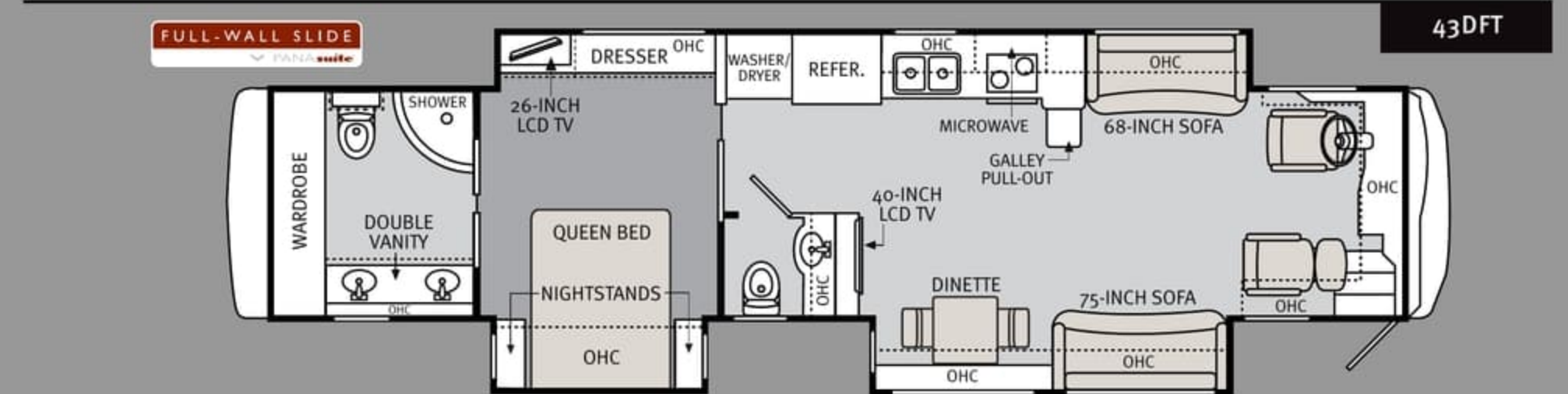
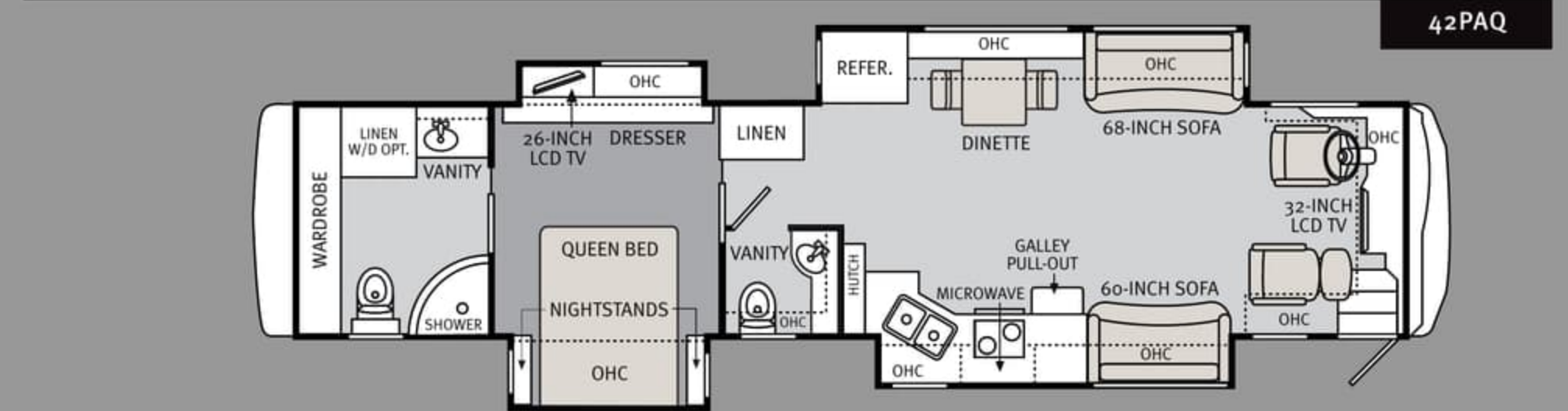
ELECTRIC AVE.

- A. BEDSPREAD
- B. SOFA
- C. ACCENT
- D. TILE



Note: Colors depicted are a reasonable representation though they may not be an exact match of the actual colors due to variances in processing and production. See your dealer for actual fabric and paint chip samples.

Carpet Tile



Standards Options

Due to continuous product improvement, please visit us online at monacocoach.com for the latest in standards and options, specifications, and technical data.

	42PAQ	43DFT	43PKQ	43PD5	
WEIGHTS	Gross Vehicle Weight Rating (lbs.)	43,000	43,000	43,000	43,000
	Gross Combined Weight Rating ¹ (lbs.)	53,000	53,000	53,000	53,000
	Front Gross Axle Weight Rating (lbs.)	13,000	13,000	13,000	13,000
	Rear Gross Axle Weight Rating (lbs.)	20,000	20,000	20,000	20,000
	Tag Axle Weight Rating (lbs.)	10,000	10,000	10,000	10,000
MEASUREMENTS	Wheelbase	261"	273"	273"	273"
	Overall Length	43' 3"	44' 3"	44' 3"	44' 3"
	Overall Height	12' 7"	12' 7"	12' 7"	12' 7"
	Exterior Width	100.5"	100.5"	100.5"	100.5"
	Interior Height	84"	84"	84"	84"
TANK CAPACITIES²	Gray Tank (Gal.)	62	62	62	62
	Black Tank (Gal.)	40	40	40	40
	Fresh Tank (Gal.)	100	100	100	100
	Fuel Tank (Gal.)	100	100	100	100
	LP Tank (Gal.)	39	39	39	39

¹Towing capacity is limited by GCWR; your vehicle's towing capacity is the difference between the GCWR and the actual vehicle weight, including all water, fuel, passengers and cargo. Your towed vehicle should be equipped with auxiliary brakes if the weight of the towed vehicle exceeds 1,000 lbs. Consult your owner's manual for further towing information.

²All tank capacities are estimated based upon calculations provided by the tank manufacturers and represent approximate capacities. The actual "usable capacity" may be greater or less than the estimated capacities based upon fabrication and installation of the tanks.

³Actual filled LP capacity is 80% of listing due to safety shut-off required on tank.

The actual overall length of the recreational vehicle may differ from that indicated in the brochure due to variances in the manufacturing process and/or installed components. The actual length may be greater or less than that indicated. Due to the large variety of options and floorplan arrangements available to our customers, actual weights for each unit can differ significantly. Monaco provides a weight sticker on each unit we produce which includes that unit's tank capacities and approximate weight. Consult your local Monaco dealer for unit availability and further information. The information printed in this brochure reflects product design, fabrication, and component parts at the date of printing. The manufacturer reserves the right, at any time, to make changes in product design or material or component specifications

as its sole option, without notice. This includes the substitution of components of a different brand or trade name which will result in comparable performance. All information printed in this brochure is subject to change after the date of printing. Some features shown or mentioned in this brochure are optional and may only be available in selected floorplans. Photographs may depict a floorplan option that has been discontinued or is no longer available at the time of your purchase. Photographs may show props or decorations that are not standard equipment. Monaco, the Monaco logo and its design, are registered trademarks. Other products and company names are trademarks and/or registered trademarks of their respective holders. While the color of the motorhome's exterior and the interior fabrics depicted in this sales brochure are fair and

reasonable depictions, the colors depicted may not be an exact match of the actual colors because of the variances in photo-processing and printing. Due to product improvements, changes during the model year and/or transcription errors that may occur, information represented within this brochure may not be accurate at the time of your purchase. If certain information is significant to your purchasing decision, please confirm the information with your dealer. Component part and appliance manufacturers issue limited warranties covering portions of the recreational vehicle not covered under the Limited Warranties issued by Monaco RV, LLC. To learn specific details regarding warranty coverage, please contact your selling dealership or review the warranty packet inside the recreational vehicle.

BODY CONSTRUCTION	<ul style="list-style-type: none"> Laminated Sidewall Construction Peaked One-Piece Fiberglass Roof with Fiberglass Insulation One-Piece Front Windshield Smooth Gel Coat Fiberglass Exterior Walls Deluxe Full-Body Paint 	<ul style="list-style-type: none"> Full Pass-Through Storage Bay Slide-Out Tray Pull-Out Gen. Tray w/ One-Piece Door Electric Flush Floor Stepwell Cover Chrome Dual Head Power Controlled Heated Exterior Mirrors with Turn Indicator Lights 	<ul style="list-style-type: none"> Side-Hinged Baggage Doors One-Piece Polyethylene Pass-Through Storage Compartment Full-Length Mud Flap 3M Film Front Mask Rear Ladder Undercoating
	<ul style="list-style-type: none"> Standard Run Package: Keyless Entry, Central Vacuum, Power Cord Reel, RV Sani Con System, Power Water Hose 	<ul style="list-style-type: none"> Reel, Exterior Tank Monitor Gauges, Auto Gen Start 	
CHASSIS / ENGINE / SUSPENSION	<ul style="list-style-type: none"> Roadmaster Raised Rail Chassis RR10R Cushion Air Glide Suspension with 10 Air Bags (8 Outboard-Mounted) and 10 Shock Absorbers Tag Axle with Anti-Lock Braking System Cummins[®] ISL 425 HP Engine with Allison[®] 3000 MH 6-Speed World Transmission and Electronic Shifter; Torque: 1,200 lbs./ft. Max; Engine Displacement: 8.9L/538 cu. in. Aluminum Rear Mount Radiator w/ CAC Cooler 	<ul style="list-style-type: none"> Dual Fuel Fill 160 Amp Alternator Rear Axle Ratio: 4.30:1 Tires: 275/80R/22.5 Pre-Wire for Supplemental Braking System Polished Aluminum Wheels Anti-Lock Braking System with Full Air Brakes Automatic Traction Control Variable Geometry Turbo Exhaust Brake Automatic Hydraulic Leveling System 	<ul style="list-style-type: none"> 10,000-lb. Hitch Receiver with Dual Connector 4-Pin or 7-Pin
COCKPIT	<ul style="list-style-type: none"> In-Dash Driver's Message Center In-Dash AM/FM/CD Stereo Radio with Sirius-Ready Compatibility, Aux-in-Connection, SD Card Slot and Weather Band Power Windshield and Manual Driver/ Passenger Solar Screens w/ Blackout Shades 	<ul style="list-style-type: none"> Adjustable Brake and Accelerator Pedals 3-Camera Color Rear Vision System Lighted VIP Smartwheel[®] Multiplexed Steering Wheel with Controls for Windshield Wipers, ICC and Cruise Control Intermittent Windshield Wipers Roof-Mounted Air Horn 	<ul style="list-style-type: none"> CB Radio Prep Ultraleather[™] Six-Way Power Pilot and Co-Pilot Seats (Co-Pilot Seat with Powered Footrest)
	<ul style="list-style-type: none"> GPS Navigation System Sirius Satellite Radio Tuner with Antenna 	<ul style="list-style-type: none"> 10 Disc CD Changer 	
APPLIANCES / ACCESSORIES	<ul style="list-style-type: none"> Large Four-Door Refrigerator with Ice Maker High-Output Sealed Burner Cooktop without Oven 32" Flatscreen LCD TV in Front Cockpit Overhead (42PAQ Only) Removable Solid Surface Range Covers 	<ul style="list-style-type: none"> Spacesaver Convection Microwave 40" Flatscreen LCD TV Midship TV Locations (N/A: 42PAQ) 26" LCD TV with Remote in Bedroom Home Theater System Curbside: Exterior Patio Hookups for Cable and 110V Outlet with Hatch Door 	<ul style="list-style-type: none"> to Exterior Digital Satellite System Prep Interior Cable TV Hookup and Telephone Jacks Exterior Gas Line Hookup Prep for LP Accessories Washer/Dryer Prep
	<ul style="list-style-type: none"> High-Output Sealed Burner Range with Oven Residential Refrigerator Central Vacuum with Toe Kick Inlet Stackable Washer/Dryer 26" LCD TV with Remote in Cockpit Overhead (N/A: 42PAQ) 	<ul style="list-style-type: none"> Bedroom DVD Player R5 KVH In-Motion Satellite (Does Not Include Receivers; R5 HDTV for Dish Network Only) (N/A in Canada) Multi-Satellite HD KU/KA Dish (Does Not Include Receiver) (N/A in Canada) 	<ul style="list-style-type: none"> Exterior Entertainment Center with 40" LCD TV and Single DVD Player in Storage Bay Ceiling (N/A: 43PKQ) Winegard Stationary Dish-Star (Canada Only)

Due to continuous product improvement, please visit us online at monacocoach.com for the latest in standards and options, specifications, and technical data.

	42PAQ	43DFT	43PKQ	43PD5	
WEIGHTS	Gross Vehicle Weight Rating (Lbs.)	43,000	43,000	43,000	43,000
	Gross Combined Weight Rating ¹ (Lbs.)	53,000	53,000	53,000	53,000
	Front Gross Axle Weight Rating (Lbs.)	13,000	13,000	13,000	13,000
	Rear Gross Axle Weight Rating (Lbs.)	20,000	20,000	20,000	20,000
	Tag Axle Weight Rating (Lbs.)	10,000	10,000	10,000	10,000
MEASUREMENTS	Wheelbase	261"	273"	273"	273"
	Overall Length	43' 3"	44' 3"	44' 3"	44' 3"
	Overall Height	12' 7"	12' 7"	12' 7"	12' 7"
	Exterior Width	100.5"	100.5"	100.5"	100.5"
	Interior Height	84"	84"	84"	84"
TANK CAPACITIES²	Gray Tank (Gal.)	62	62	62	62
	Black Tank (Gal.)	40	40	40	40
	Fresh Tank (Gal.)	100	100	100	100
	Fuel Tank (Gal.)	100	100	100	100
	LP Tank (Gal.)	39	39	39	39

¹Towing capacity is limited by GCWR; your vehicle's towing capacity is the difference between the GCWR and the actual vehicle weight, including all water, fuel, passengers and cargo. Your towed vehicle should be equipped with auxiliary brakes if the weight of the towed vehicle exceeds 1,000 lbs. Consult your owner's manual for further towing information.

²All tank capacities are estimated based upon calculations provided by the tank manufacturers and represent approximate capacities. The actual "usable capacity" may be greater or less than the estimated capacities based upon fabrication and installation of the tanks.

³Actual filled LP capacity is 80% of listing due to safety shut-off required on tank.

The actual overall length of the recreational vehicle may differ from that indicated in the brochure due to variances in the manufacturing process and/or installed components. The actual length may be greater or less than that indicated. Due to the large variety of options and floorplan arrangements available to our customers, actual weights for each unit can differ significantly. Monaco provides a weight sticker on each unit we produce which includes that unit's tank capacities and approximate weight. Consult your local Monaco dealer for unit availability and further information. The information printed in this brochure reflects product design, fabrication, and component parts at the date of printing. The manufacturer reserves the right, at any time, to make changes in product design or material or component specifications

as its sole option, without notice. This includes the substitution of components of a different brand or trade name which will result in comparable performance. All information printed in this brochure is subject to change after the date of printing. Some features shown or mentioned in this brochure are optional and may only be available in selected floorplans. Photographs may depict a floorplan option that has been discontinued or is no longer available at the time of your purchase. Photographs may show props or decorations that are not standard equipment. Monaco, the Monaco logo and its design, are registered trademarks. Other products and company names are trademarks and/or registered trademarks of their respective holders. While the color of the motorhome's exterior and the interior fabrics depicted in this sales brochure are fair and

reasonable depictions, the colors depicted may not be an exact match of the actual colors because of the variances in photo-processing and printing. Due to product improvements, changes during the model year and/or transcription errors that may occur, information represented within this brochure may not be accurate at the time of your purchase. If certain information is significant to your purchasing decision, please confirm the information with your dealer. Component part and appliance manufacturers issue limited warranties covering portions of the recreational vehicle not covered under the Limited Warranties issued by Monaco RV, LLC. To learn specific details regarding warranty coverage, please contact your selling dealership or review the warranty packet inside the recreational vehicle.

Standards Options

BODY CONSTRUCTION	<ul style="list-style-type: none"> › Laminated Sidewall Construction › Peaked One-Piece Fiberglass Roof with Fiberglass Insulation › One-Piece Front Windshield › Smooth Gel Coat Fiberglass Exterior Walls › Deluxe Full-Body Paint 	<ul style="list-style-type: none"> › Full Pass-Through Storage Bay Slide-Out Tray › Pull-Out Gen. Tray w/ One-Piece Door › Electric Flush Floor Stepwell Cover › Chrome Dual Head Power Controlled Heated Exterior Mirrors with Turn Indicator Lights 	<ul style="list-style-type: none"> › Side-Hinged Baggage Doors › One-Piece Polyethylene Pass-Through Storage Compartment › Full-Length Mud Flap › 3M Film Front Mask › Rear Ladder › Undercoating
	<ul style="list-style-type: none"> › Standard Run Package: Keyless Entry, Central Vacuum, Power Cord Reel, RV Sani Con System, Power Water Hose 	<ul style="list-style-type: none"> › Reel, Exterior Tank Monitor Gauges, Auto Gen Start 	
CHASSIS / ENGINE / SUSPENSION	<ul style="list-style-type: none"> › Roadmaster Raised Rail Chassis RR10R › Cushion Air Glide Suspension with 10 Air Bags (8 Outboard-Mounted) and 10 Shock Absorbers › Tag Axle with Anti-Lock Braking System › Cummins® ISL 425 HP Engine with Allison® 3000 MH 6-Speed World Transmission and Electronic Shifter; Torque: 1,200 lbs./ft. Max; Engine Displacement: 8.9L/538 cu. in. › Aluminum Rear Mount Radiator w/ CAC Cooler 	<ul style="list-style-type: none"> › Dual Fuel Fill › 160 Amp Alternator › Rear Axle Ratio: 4.30:1 › Tires: 275/80R/22.5 › Pre-Wire for Supplemental Braking System › Polished Aluminum Wheels › Anti-Lock Braking System with Full Air Brakes › Automatic Traction Control › Variable Geometry Turbo Exhaust Brake › Automatic Hydraulic Leveling System 	<ul style="list-style-type: none"> › 10,000-lb. Hitch Receiver with Dual Connector 4-Pin or 7-Pin
COCKPIT	<ul style="list-style-type: none"> › In-Dash Driver's Message Center › In-Dash AM/FM/CD Stereo Radio with Sirius-Ready Compatibility, Aux-in-Connection, SD Card Slot and Weather Band › Power Windshield and Manual Driver/Passenger Solar Screens w/ Blackout Shades 	<ul style="list-style-type: none"> › Adjustable Brake and Accelerator Pedals › 3-Camera Color Rear Vision System › Lighted VIP Smartwheel® Multiplexed Steering Wheel with Controls for Windshield Wipers, ICC and Cruise Control › Intermittent Windshield Wipers › Roof-Mounted Air Horn 	<ul style="list-style-type: none"> › CB Radio Prep › Ultraleather™ Six-Way Power Pilot and Co-Pilot Seats (Co-Pilot Seat with Powered Footrest)
	<ul style="list-style-type: none"> › GPS Navigation System › Sirius Satellite Radio Tuner with Antenna 	<ul style="list-style-type: none"> › 10 Disc CD Changer 	
APPLIANCES / ACCESSORIES	<ul style="list-style-type: none"> › Large Four-Door Refrigerator with Ice Maker › High-Output Sealed Burner Cooktop without Oven › 32" Flatscreen LCD TV in Front Cockpit Overhead (42PAQ Only) › Removable Solid Surface Range Covers 	<ul style="list-style-type: none"> › Spacesaver Convection Microwave › 40" Flatscreen LCD TV Midship TV Locations (N/A: 42PAQ) › 26" LCD TV with Remote in Bedroom › Home Theater System › Curbside: Exterior Patio Hookups for Cable and 110V Outlet with Hatch Door 	<ul style="list-style-type: none"> › to Exterior › Digital Satellite System Prep › Interior Cable TV Hookup and Telephone Jacks › Exterior Gas Line Hookup Prep for LP Accessories › Washer/Dryer Prep
	<ul style="list-style-type: none"> › High-Output Sealed Burner Range with Oven › Residential Refrigerator › Central Vacuum with Toe Kick Inlet › Stackable Washer/Dryer › 26" LCD TV with Remote in Cockpit Overhead (N/A: 42PAQ) 	<ul style="list-style-type: none"> › Bedroom DVD Player › R5 KVH In-Motion Satellite (Does Not Include Receivers; R5 HDTV for Dish Network Only) (N/A in Canada) › Multi-Satellite HD KU/KA Dish (Does Not Include Receiver) (N/A in Canada) 	<ul style="list-style-type: none"> › Exterior Entertainment Center with 40" LCD TV and Single DVD Player in Storage Bay Ceiling (N/A: 43PKQ) › Winegard Stationary Dish-Star (Canada Only)

Standards Options

INTERIOR	<ul style="list-style-type: none"> Hardwood Cabinetry Refrigerator with Hardwood Inserts Polished Radius Solid Surface Kitchen Countertop with Stainless Steel Kitchen Sink and Two Sink Covers Galley Area Island w/ Corian Countertops (43DFT Only) 	<ul style="list-style-type: none"> Pull-Out Countertop Extension with Drawer and Corian® Top Kitchen Galley Backsplash: Ceramic Tile with Decorative Glass Accents All Other Countertops Polished Corian Polished Solid Surface Bathroom Countertop with Integrated Sink 	<ul style="list-style-type: none"> Ceramic Tile in Kitchen, Living Room and Bath Designer Carpeting in Bedroom Day/Night Pleated Blackout Shades in Living Area and Bedroom Soil Repellant Protection on Fabrics
	<ul style="list-style-type: none"> Décor: Thoroughbred II, Lunar Eclipse and Electric Ave. 	<ul style="list-style-type: none"> Wood: Newport Cherry and Glazed Newport Cherry 	<ul style="list-style-type: none"> Manual Solar Screens with Blackouts
FURNITURE	<ul style="list-style-type: none"> Free-Standing Dinette with Full-Length Wall Cabinet, Two Free-Standing Chairs and Two Folding Chairs (N/A: 43PD5) Curbside: Expandable Sofa (43PKQ) 	<ul style="list-style-type: none"> 36" Arched-Back Wood Booth Dinette with Hardwood Side Sliding Dinette Table Top, Storage Access Door at End of Rear Seat Base and Drawer at Front 	<ul style="list-style-type: none"> Seat Base (43PD5 Only) Roadside: Fabric Jackknife Sofa Curbside: Fabric Jackknife Sofa (N/A: 43PD5, 43PKQ)
	<ul style="list-style-type: none"> King Bed, No Nightstands (42PAQ Only) King Bed, 2 Nightstands (N/A: 42PAQ) Queen Bed Select Comfort Air Mattress Roadside: Fabric Hide-A-Bed w/ Air Matt. Roadside: UltraLeather Jackknife Sofa Roadside: UltraLeather Hide-A-Bed with Air Mattress Roadside: UltraLeather Booth Dinette Ensemble (42PAQ, 43PD5) 40" Arched-Back Wood Booth Dinette w/ Hardwood Side Sliding Dinette Table Top and Storage (Deletes Island and Adds Corian Galley Pull-Out Countertop Extension with Drawer (43PD5 Only) 	<ul style="list-style-type: none"> Roadside: 36" UltraLeather Booth Dinette Ensemble (43PD5 Only) Roadside: 36" UltraLeather Booth Dinette Ensemble with Hide-A-Bed w/ Air Mattress (43PD5 Only) Roadside: 42" UltraLeather Booth Dinette Ensemble (Deletes Island and Adds Corian Galley Pull-Out Countertop Extension with Drawer (43PD5, 43PKQ) Roadside: 42" UltraLeather Booth Dinette Ensemble with Hide-A-Bed w/ Air Mattress (Deletes Island and Adds Corian Galley Pull-Out Countertop Extension with Drawer (43PD5 Only) Free-Standing Dinette with Computer Workstation (N/A: 43PD5) 	<ul style="list-style-type: none"> Curbside: UltraLeather Booth Dinette Ensemble with Hide-A-Bed w/ Air Mattress (43DFT Only) Curbside: Two Leather Euro Recliners without Table (43DFT Only) Curbside: UltraLeather Hide-A-Bed w/ Air Mattress (43PD5: Deletes Storage cabinet w/ Pull-Out Desk and Relocates 40" TV to Front Overhead) (N/A: 42PAQ, 43PKQ) Curbside: UltraLeather Jackknife Sofa (43PD5: Deletes Storage cabinet with Pull-Out Desk and Relocates 40" TV to Front Overhead) (N/A: 43PKQ) Curbside: UltraLeather Booth Dinette Ensemble (43DFT Only)
HEATING / VENTS / AC	<ul style="list-style-type: none"> Three 15M BTU Air Conditioners with Ducted Air, Heat Pumps and Digital Thermostat Control Dual Zone Electronic Ignition Furnaces 	<ul style="list-style-type: none"> Kitchen: 12V Attic Fan with Wall Control Bath: 12V Attic Fan with Wall Control 12V Heater in Wet Bay 	<ul style="list-style-type: none"> Electric Fireplace (43PKQ Only)
	<ul style="list-style-type: none"> Three 15M BTU Air Conditioners with Ducted Air and Heat Pumps (Requires 	<ul style="list-style-type: none"> 10kW Generator Option) Ceiling Fan in Bedroom 	

PLUMBING / LP SYSTEMS	<ul style="list-style-type: none"> Demand Water System and Water Pump 10 Gallon LP Gas/Electric Water Heater with Electronic Ignition Single Lever Kitchen Faucet with Pull-Out Sprayer Central Water Filtration System 	<ul style="list-style-type: none"> Water Pump Switch at Kitchen Galley, Bathroom(s) and Service Bay Area Shower Inside Wet Bay with Hot/Cold Water and Shower Head with Shut-Off Holding Tank Rinsing System Gravity and Pressurized Water Fill 	<ul style="list-style-type: none"> One-Piece Round Shower China Toilet (N/A: 43PKQ) China Toilet Electronic Silent Plus (42PAQ, 43DFT)
	<ul style="list-style-type: none"> RV San-Con Holding Tank Flush System 	<ul style="list-style-type: none"> Water Hose Reel 	<ul style="list-style-type: none"> Exterior Tank Monitor Gauge in Wet Bay
ELECTRICAL / LIGHTS	<ul style="list-style-type: none"> 50 Amp 12V Distribution Panel and Power Cord Onan® 10.0 kW Quiet Diesel Generator on Manual Slide-Out Tray Power Control System Two 6V Deep Cycle Batteries 	<ul style="list-style-type: none"> Two 12V Heavy-Duty Chassis Batteries Battery Boost Switch in Cockpit 2000-Watt Inverter Recessed Docking Lights 120V Outlet in Outside Storage Compartment 	<ul style="list-style-type: none"> Hallway Convenience Center Pre-Wire for Solar Panel
	<ul style="list-style-type: none"> Auto Generator Start Solar Panel w/ Controller and Display 	<ul style="list-style-type: none"> Power Cord Reel 	
WINDOWS / DOORS / AWNINGS	<ul style="list-style-type: none"> Radius Flush-Mount Dual-Pane Safety Glass with Dark Tinted Slider Windows Front Entry Door with Removable Screen and Anti-Skid Steps Automatic Front Door Awning Topper Slideout Awnings Living Area and Bedroom Automatic Patio Awning 	<ul style="list-style-type: none"> Window Awnings on All Slideout House Windows, Except Kitchen, Private Bath and Slideout Windows Under Patio Awning Tinted Skylight in Bathroom with Protecta Glaze 	
	<ul style="list-style-type: none"> Keyless Entry 		
SAFETY	<ul style="list-style-type: none"> Fire Extinguisher Deadbolt Lock on Entrance Door 120V GFI Protected Circuit (Kitchen, Bath and Exterior) LP Gas Detector Smoke Detector 	<ul style="list-style-type: none"> Carbon Monoxide Detector Driver and Passenger Three-Point Seat Belts Third Brake Safety Light Egress Windows 	

BUY LOCALLY. ENJOY EVERYWHERE.

Monaco RV strongly encourages its retail customers to purchase from their local dealerships whenever possible. Buying a new Monaco RV locally allows a customer to establish a relationship with a dealer close to home and provides convenient service and support from product-trained technicians. On our end, Monaco RV will continue to provide our dealer partners and customers with the finest recreational vehicles in the industry.

ALL ROADS LEAD TO MONACOCOACH.COM

Wherever the road takes you, you're never more than a click away from your friends at Monaco. Just go to monacocoach.com for all the latest product news, club dates and destinations, a dealer locator function, and factory tour information. You can also e-mail us directly through the site at any time.



Standards Options

INTERIOR	<ul style="list-style-type: none"> › Hardwood Cabinetry › Refrigerator with Hardwood Inserts › Polished Radius Solid Surface Kitchen Countertop with Stainless Steel Kitchen Sink and Two Sink Covers › Galley Area Island w/ Corian Countertops (43DFT Only) 	<ul style="list-style-type: none"> › Pull-Out Countertop Extension with Drawer and Corian® Top › Kitchen Galley Backsplash: Ceramic Tile with Decorative Glass Accents › All Other Countertops Polished Corian › Polished Solid Surface Bathroom Countertop with Integrated Sink 	<ul style="list-style-type: none"> › Ceramic Tile in Kitchen, Living Room and Bath › Designer Carpeting in Bedroom › Day/Night Pleated Blackout Shades in Living Area and Bedroom › Soil Repellant Protection on Fabrics
	<ul style="list-style-type: none"> › Décors: Thoroughbred II, Lunar Eclipse and Electric Ave. 	<ul style="list-style-type: none"> › Wood: Newport Cherry and Glazed Newport Cherry 	<ul style="list-style-type: none"> › Manual Solar Screens with Blackouts
FURNITURE	<ul style="list-style-type: none"> › Free-Standing Dinette with Full-Length Wall Cabinet, Two Free-Standing Chairs and Two Folding Chairs (N/A: 43PD5) › Curbside: Expandable Sofa (43PKQ) 	<ul style="list-style-type: none"> › 36" Arched-Back Wood Booth Dinette with Hardwood Side Sliding Dinette Table Top, Storage Access Door at End of Rear Seat Base and Drawer at Front 	<ul style="list-style-type: none"> › Seat Base (43PD5 Only) › Roadside: Fabric Jackknife Sofa › Curbside: Fabric Jackknife Sofa (N/A: 43PD5, 43PKQ)
	<ul style="list-style-type: none"> › King Bed, No Nightstands (42PAQ Only) › King Bed, 2 Nightstands (N/A: 42PAQ) › Queen Bed Select Comfort Air Mattress › Roadside: Fabric Hide-A-Bed w/ Air Matt. › Roadside: UltraLeather Jackknife Sofa › Roadside: UltraLeather Hide-A-Bed with Air Mattress › Roadside: UltraLeather Booth Dinette Ensemble (42PAQ, 43PD5) › 40" Arched-Back Wood Booth Dinette w/ Hardwood Side Sliding Dinette Table Top and Storage (Deletes Island and Adds Corian Galley Pull-Out Countertop Extension with Drawer (43PD5 Only) 	<ul style="list-style-type: none"> › Roadside: 36" UltraLeather Booth Dinette Ensemble (43PD5 Only) › Roadside: 36" UltraLeather Booth Dinette Ensemble with Hide-A-Bed w/ Air Mattress (43PD5 Only) › Roadside: 42" UltraLeather Booth Dinette Ensemble (Deletes Island and Adds Corian Galley Pull-Out Countertop Extension with Drawer (43PD5, 43PKQ) › Roadside: 42" UltraLeather Booth Dinette Ensemble with Hide-A-Bed w/ Air Mattress (Deletes Island and Adds Corian Galley Pull-Out Countertop Extension with Drawer (43PD5 Only) › Free-Standing Dinette with Computer Workstation (N/A: 43PD5) 	<ul style="list-style-type: none"> › Curbside: UltraLeather Booth Dinette Ensemble with Hide-A-Bed w/ Air Mattress (43DFT Only) › Curbside: Two Leather Euro Recliners without Table (43DFT Only) › Curbside: UltraLeather Hide-A-Bed w/ Air Mattress (43PD5: Deletes Storage cabinet w/ Pull-Out Desk and Relocates 40" TV to Front Overhead) (N/A: 42PAQ, 43PKQ) › Curbside: UltraLeather Jackknife Sofa (43PD5: Deletes Storage cabinet with Pull-Out Desk and Relocates 40" TV to Front Overhead) (N/A: 43PKQ) › Curbside: UltraLeather Booth Dinette Ensemble (43DFT Only)
HEATING / VENTS / AC	<ul style="list-style-type: none"> › Three 15M BTU Air Conditioners with Ducted Air, Heat Pumps and Digital Thermostat Control › Dual Zone Electronic Ignition Furnaces 	<ul style="list-style-type: none"> › Kitchen: 12V Attic Fan with Wall Control › Bath: 12V Attic Fan with Wall Control › 12V Heater in Wet Bay 	
	<ul style="list-style-type: none"> › Three 15M BTU Air Conditioners with Ducted Air and Heat Pumps (Requires 	<ul style="list-style-type: none"> › 10kW Generator Option) › Ceiling Fan in Bedroom 	<ul style="list-style-type: none"> › Electric Fireplace (43PKQ Only)

PLUMBING / LP SYSTEMS	<ul style="list-style-type: none"> › Demand Water System and Water Pump › 10 Gallon LP Gas/Electric Water Heater with Electronic Ignition › Single Lever Kitchen Faucet with Pull-Out Sprayer › Central Water Filtration System 	<ul style="list-style-type: none"> › Water Pump Switch at Kitchen Galley, Bathroom(s) and Service Bay Area › Shower Inside Wet Bay with Hot/Cold Water and Shower Head with Shut-Off › Holding Tank Rinsing System › Gravity and Pressurized Water Fill 	<ul style="list-style-type: none"> › One-Piece Round Shower › China Toilet (N/A: 43PKQ) › China Toilet Electronic Silent Plus (42PAQ, 43DFT)
	<ul style="list-style-type: none"> › RV San-Con Holding Tank Flush System 	<ul style="list-style-type: none"> › Water Hose Reel 	<ul style="list-style-type: none"> › Exterior Tank Monitor Gauge in Wet Bay
ELECTRICAL / LIGHTS	<ul style="list-style-type: none"> › 50 Amp 12V Distribution Panel and Power Cord › Onan® 10.0 kW Quiet Diesel Generator on Manual Slide-Out Tray › Power Control System › Two 6V Deep Cycle Batteries 	<ul style="list-style-type: none"> › Two 12V Heavy-Duty Chassis Batteries › Battery Boost Switch in Cockpit › 2000-Watt Inverter › Recessed Docking Lights › 120V Outlet in Outside Storage Compartment 	<ul style="list-style-type: none"> › Hallway Convenience Center › Pre-Wire for Solar Panel
	<ul style="list-style-type: none"> › Auto Generator Start › Solar Panel w/ Controller and Display 	<ul style="list-style-type: none"> › Power Cord Reel 	
WINDOWS / DOORS / AWNINGS	<ul style="list-style-type: none"> › Radius Flush-Mount Dual-Pane Safety Glass with Dark Tinted Slider Windows › Front Entry Door with Removable Screen and Anti-Skid Steps › Automatic Front Door Awning › Topper Slideout Awnings Living Area and Bedroom › Automatic Patio Awning 	<ul style="list-style-type: none"> › Window Awnings on All Slideout House Windows, Except Kitchen, Private Bath and Slideout Windows Under Patio Awning › Tinted Skylight in Bathroom with Protecta Glaze 	
	<ul style="list-style-type: none"> › Keyless Entry 		
SAFETY	<ul style="list-style-type: none"> › Fire Extinguisher › Deadbolt Lock on Entrance Door › 120V GFI Protected Circuit (Kitchen, Bath and Exterior) › LP Gas Detector › Smoke Detector 	<ul style="list-style-type: none"> › Carbon Monoxide Detector › Driver and Passenger Three-Point Seat Belts › Third Brake Safety Light › Egress Windows 	

BUY LOCALLY. ENJOY EVERYWHERE.

Monaco RV strongly encourages its retail customers to purchase from their local dealerships whenever possible. Buying a new Monaco RV locally allows a customer to establish a relationship with a dealer close to home and provides convenient service and support from product-trained technicians. On our end, Monaco RV will continue to provide our dealer partners and customers with the finest recreational vehicles in the industry.

ALL ROADS LEAD TO MONACOCOACH.COM

Wherever the road takes you, you're never more than a click away from your friends at Monaco. Just go to monacocoach.com for all the latest product news, club dates and destinations, a dealer locator function, and factory tour information. You can also e-mail us directly through the site at any time.





MONACO®

DRIVING YOUR DREAM.

91320 Coburg Industrial Way, Coburg, OR 97408 | monacocoach.com | 877 252 4666

NAVISTAR

STRONGER THAN EVER.

When you buy a new Monaco RV, you get all the great things you expect: state-of-the-art products, innovative floorplans and first-class customer service. You also get the confidence that comes with being part of a 175-year-old parent company like Navistar, a world leader in transportation. To learn more about Navistar and its affiliates, visit navistar.com.



MONACO®

DRIVING YOUR DREAM.

91320 Coburg Industrial Way, Coburg, OR 97408 | monacocoach.com | 877 252 4666**NAVISTAR®**

STRONGER THAN EVER.

When you buy a new Monaco RV, you get all the great things you expect: state-of-the-art products, innovative floorplans and first-class customer service. You also get the confidence that comes with being part of a 175-year-old parent company like Navistar, a world leader in transportation. To learn more about Navistar and its affiliates, visit navistar.com.