

# Retreat

America's Your Back Yard.



[WWW.KEYSTONERV-RETREAT.COM](http://WWW.KEYSTONERV-RETREAT.COM)



Retreat

# *Retreat* THE GREAT INDOORS

America is your back yard in the Retreat! Experience the great outdoors with the superior comfort and quality of this destination trailer.

Shown is the front living quarters of the 39FDEN in Saddlebrook Decor with the built in fireplace and 32" television and large windows allowing for a clear view of your beautiful surroundings.





THE 39KBTS SHOWN BELOW IN MAPLECREST DECOR

The 39FKSS, shown in Saddlebrook decor is designed for your next escape. A comfortable living area with all the amenities you need for any destination. The exclusive cathedral slide out on the Retreat makes this trailer fun for the whole family to enjoy.





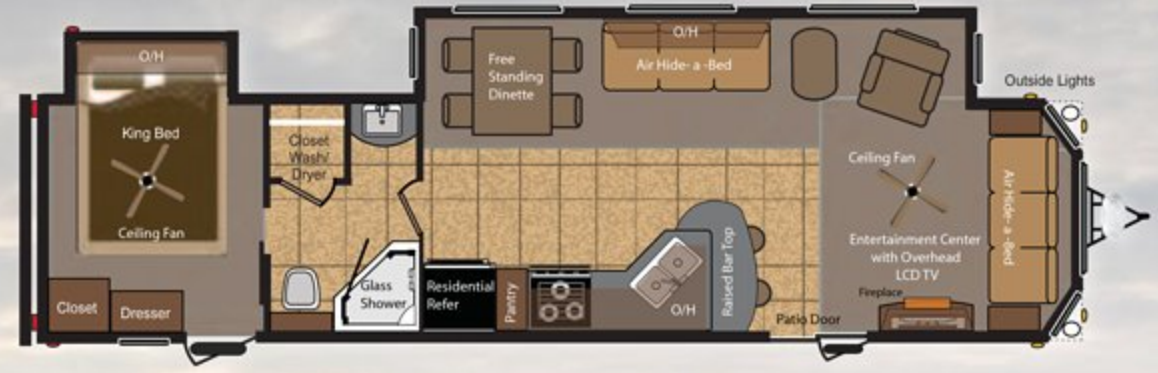
The front interior living space has a lot of great features to make you feel at home. Retreat 39KBTS shown in Maplecrest Decor.

# Retreat FLOORPLANS

## 39BHTS



## 39FDEN



## 39FKSS



## 39KBTS



Model	39BHTS	39FDEN	39FKSS	39KBTS
Shipping Weight	11,095	10,441	10,692	11,002
Carrying Capacity	1,905	2,534	2,283	1,998
Hitch Weight	1,255	975	955	1,300
Exterior Length	40' 11"	40' 11"	40' 11"	40' 11"
Width	8' 6"	8' 6"	8' 6"	8' 6"
Height	12' 7"	12' 7"	12' 7"	12' 7"
Fresh Water Capacity	55	55	55	55
Gray Water Capacity	64	64	64	64
Black Water Capacity	38	38	38	76
Tire Size	ST235/80R16E	ST235/80R16E	ST235/80R16E	ST235/80R16E

DISCLAIMER: Product information is as accurate as possible as of the date of publication of this brochure. All features, floor plans, and specifications in this brochure are subject to change without notice. Please also consult Keystone's web site at [www.keystonerv.com](http://www.keystonerv.com) for more current product information and specifications. All customers should consult with a motor vehicle manufacturer or their dealer concerning the purchase and use of suitable tow vehicles for Keystone products. Keystone disclaims any liability or damages suffered as a result of the selection, operation, use or misuse of a tow vehicle. KEYSTONE'S LIMITED WARRANTY DOES NOT COVER DAMAGE TO THE RECREATIONAL VEHICLE OR THE TOW VEHICLE AS A RESULT OF THE SELECTION, OPERATION, USE OR MISUSE OF THE TOW VEHICLE. 03/12

**LEARN MORE**

Get the free mobile app at <http://gettag.mobi> and scan this Tag.

# *Retreat* RAISE YOUR STANDARDS

America is your backyard in the Retreat destination trailer. Whether it's for a weekend or for weeks at a time, the comforts of our Retreat cannot be matched!



The 39KBTS, is shown in the Maplecrest decor. Above, you see Retreat's beautiful kitchen loaded with all the amenities necessary for extended stay camping. These amenities include, but are not limited to a large residential refrigerator, microwave, large stove and oven combination, extra large double bowl kitchen sink with sprayer faucet, huge double door pantry and an extra "Eat in Bar" in most models.



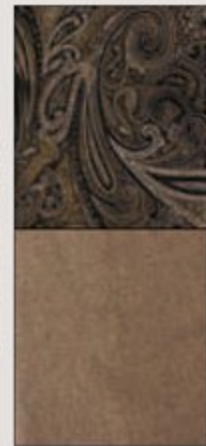
The 39KBTS bedroom is spacious and has all the luxuries at your bedside.

## *Retreat* DECOR

BROOKSTONE



SADDLEBROOK



MAPLECREST





1



2



3



4



5

**DON'T FORGET WHAT GOT  
RETREAT TO THE TOP! SOME  
OF OUR FANTASTIC CLASSIC  
FEATURES INCLUDE...**



6



7



8



9



Retreat offers ample amounts of kitchen storage!

1. King Size Bed with Overhead Storage
2. Detachable Hitch
3. Central Vacuum Cleaner
4. Porcelain Foot Flush Toilet
5. Prepped for Washer and Dryer on FDEN, FFSS, KBTS
6. Wooden Window Blinds Throughout
7. Electric Fireplace
8. Extra Large Kitchen Sink with Pull Out Sprayer
9. Outside Soft Lighting



Retreat 39FKSS master bathroom

*Retreat* FEATURES

#### LIVING ROOM HIGHLIGHTS

- 8' Ceiling height
- Solid wood slide room fascia
- 19' Slide room with cathedral ceiling (N/A 39KBTS, 39BHTS)
- 39" Main slide room depth
- Wooden blinds in living room
- Residential window treatments

#### ENTERTAINMENT CENTER

- 32" LCD TV
- I-Pod hook-up
- DVD player
- AM/FM/CD/MP3 Jack
- True sound speaker system
- Dual exterior speakers
- CD compartment
- Fireplace
- Overhead cabinets
- Air mattress sleeper sofas
- Recliner (N/A 39KBTS, 39BHTS)
- Residential end tables
- Free standing dinette with four chairs
- Recessed ceiling lighting
- Ceiling fan with light (Living Room)
- Wall sconce in the slide room
- Etched glass overhead
- Cabinets in the slide room
- Dinette chandelier

#### KITCHEN HIGHLIGHTS

- Extra large two bowl kitchen sink
- High rise faucet with pull out sprayer
- Residential "eat in" bar (Except 39BHTS)
- Two bar stools (Except 39BHTS)
- Waste basket storage
- Solid wood residential cabinets with crown molding

- Wood core cabinet stiles
- Hardwood cabinet doors with raised inserts
- Residential ball bearing drawer guides
- Microwave with carousel
- Three burner range with oven
- 18 Cu. Ft. residential black refrigerator
- Double door pantry
- Water purification system
- Central vacuum system

#### BATH

- Porcelain Toilet with foot flush
- Neo-angle glass shower with surround
- Bathroom fantastic fan
- Large medicine cabinet
- Louvered door on large closet
- Washer and dryer prep (Except 39BHTS)
- Dressing mirror

#### BEDROOM

- 7' Tall bed slide
- Pillow top king mattress
- Below bed storage
- Dual night reading sconces
- Etched glass cabinet doors in the bed slide
- Two door wardrobe
- Fully extendable deep dresser drawers
- Phone jack
- Satellite hook-up
- Night shades
- Large panoramic window
- Ceiling fan
- Recessed can lighting
- Six panel sliding bedroom door
- Two soffit accent night lights
- Dual 30 Lbs LP bottles with automatic change over and cover

- Swing away grab handle
- Exterior speakers
- Patio door with screen
- Exterior Shower
- 50 Amp detachable power cord
- Telephone hook-up
- Cable TV hook-up
- Satellite hook-up
- 110 volt exterior outlets

#### MECHANICS

- 16 gallon gas/electric DSI water heater
- 42,000 BTU furnace
- 15,000 BTU ducted air conditioner
- Prepped for a second air conditioner
- 50 Amp electrical service
- Water purification system
- 75 Amp converter
- 110 Volt outlets in the slides
- 12 Volt shur-flo water pump

#### CONSTRUCTION

- 12" Powder coated I-beam frame
- Darco wrapped main floor moisture barrier
- 5/8" Seamless dyna span floor
- Limited lifetime warranty on sub flooring
- 2" Wall studs constructed 16" on center
- Laminated Veneer Lumber beam over slide rooms
- 2" x 6" Upright supports
- 4 1/2" Crowned roof

- Radius corner blocks around windows and compartment doors
- Metal floor registers

#### SAFETY

- Safety chains
- Break away switch
- Electric brakes on all wheels
- Carbon monoxide detector
- L.P. detector
- Smoke detector
- GFI electrical outlets
- Tinted safety glass windows

#### UNIQUE RETREAT FEATURES

- Bay windows with fiberglass front end
- 8' Tall ceilings
- 102" wide body construction
- Detachable hitch
- Vaulted 19' slide out rooms
- Residential high end furniture
- King bed standard
- Sleep system mattress
- "Eat in Bar" in every kitchen (Except 39BHTS)
- Central vacuum

#### RETREAT OPTIONS

- 21' Patio awning
- Spare tire kit
- Stabilizer jacks
- 2nd 13.5K BTU A/C



Go RVing



# Retreat

America's Your Back Yard.

[WWW.KEYSTONERV-RETREAT.COM](http://WWW.KEYSTONERV-RETREAT.COM)



Get the free mobile app at <http://gettag.mobi> and scan this Tag.



[WWW.KEYSTONERV.COM](http://WWW.KEYSTONERV.COM)

574.535.2100 • 2642 HACKBERRY DRIVE  
P.O. BOX 2000 • GOSHEN, IN 46527