



STONE RIDGE



Come home to KZ!

www.kz-rv.com



36RLB

STONE RIDGE

Spacious designs and elegant decors enhance extended stay travel.





36RLB

Beautiful, hardwood slide out fascia, a 40" LCD TV, recliner rockers, optional four door 12 cubic foot refrigerator, raised panel doors, and crown moulding all combine to create a relaxing residential style retreat. Shown in Raven décor.



36UL

The optional contrasting glazed cabinetry accents the spacious kitchen. The living room fireplace and 40" LCD TV are standard.

The spacious walk-thru bath is located adjacent to the plush bedroom which features a mega-storage wardrobe.



38FL

The unique raised-level living room invites good conversation, relaxation, and provides for ample pass thru exterior storage. Shown in Quartz décor.

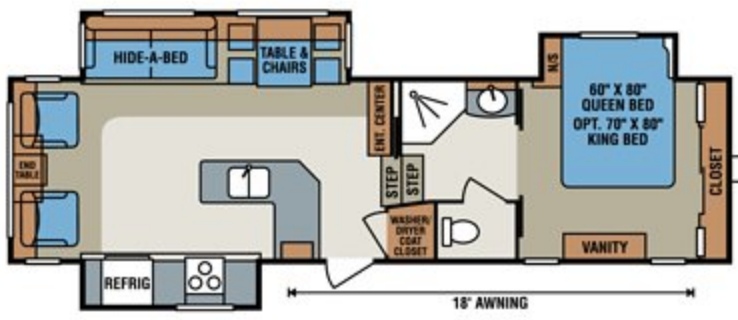
The StoneRidge product line received the RV Business Top 25 2012 RV Debuts Award.



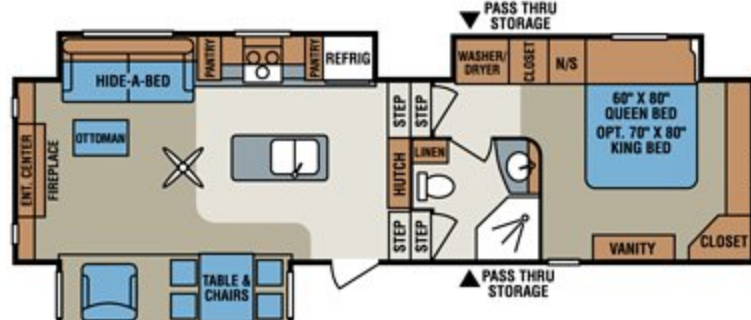


38FL

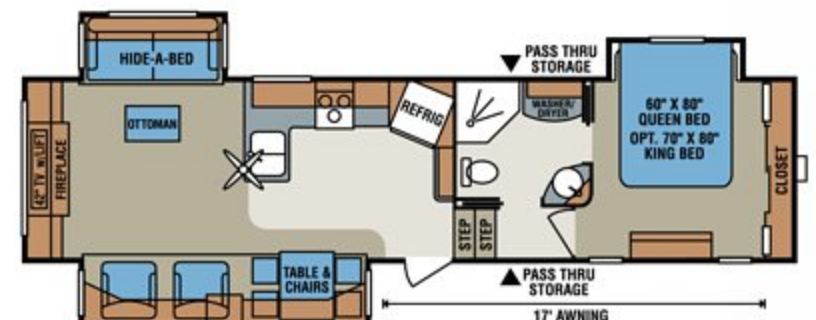
Corian® countertops, a well designed kitchen, lots of storage, and an elegant bedroom and bath will make your travel time special.



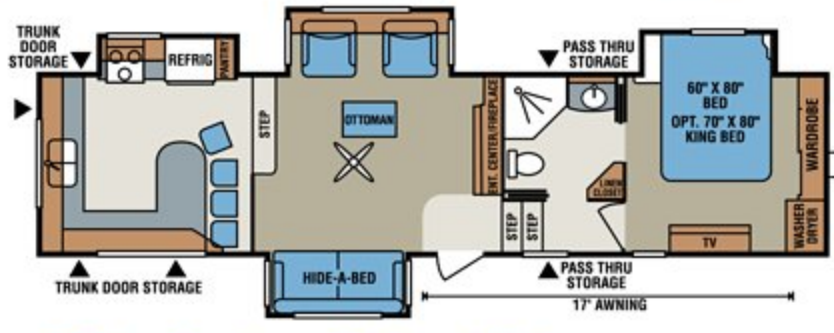
33KS



34IK



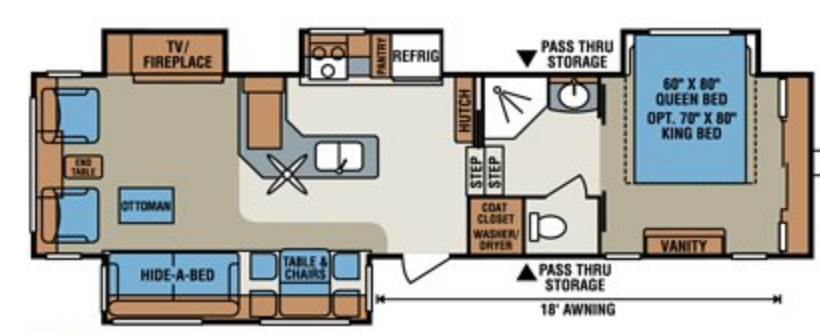
35RE



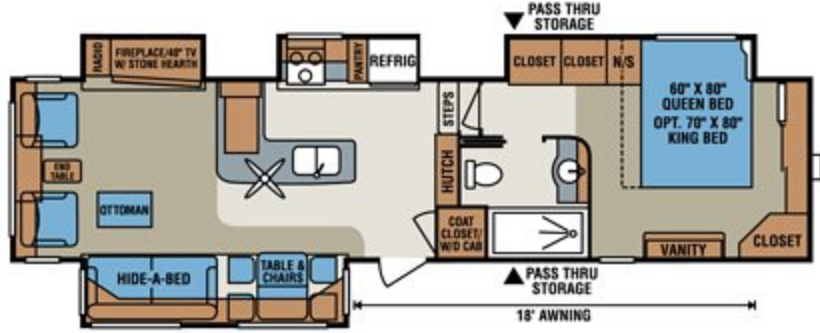
36RK • Features Tri-Level Living



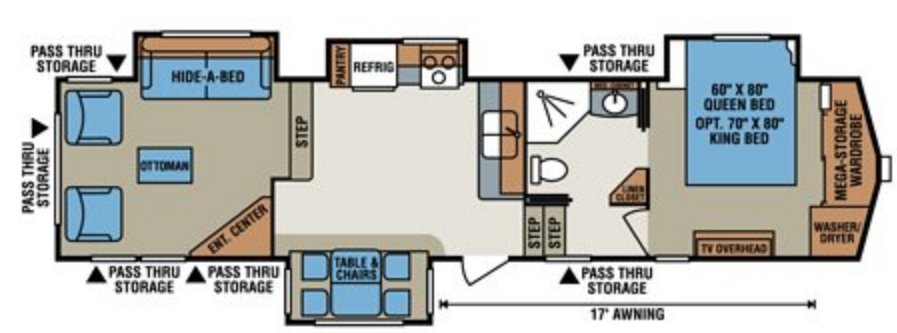
36RK • Outside Kitchen Option



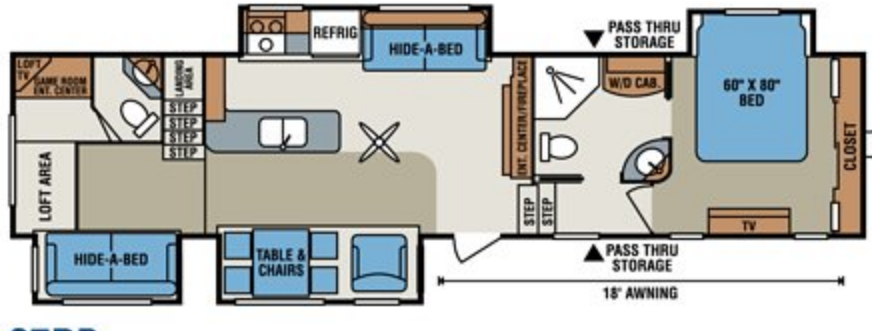
36RL



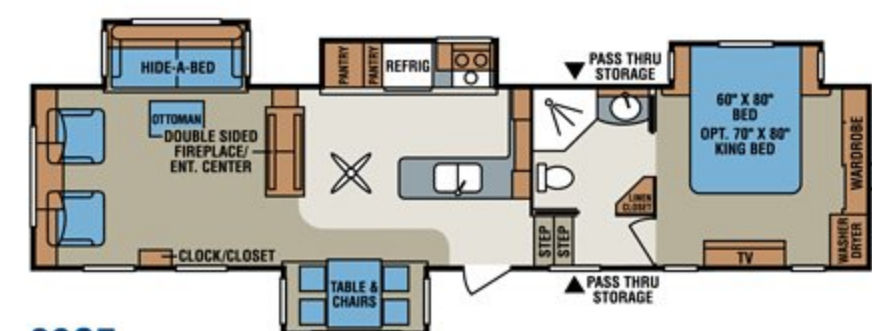
36RLB



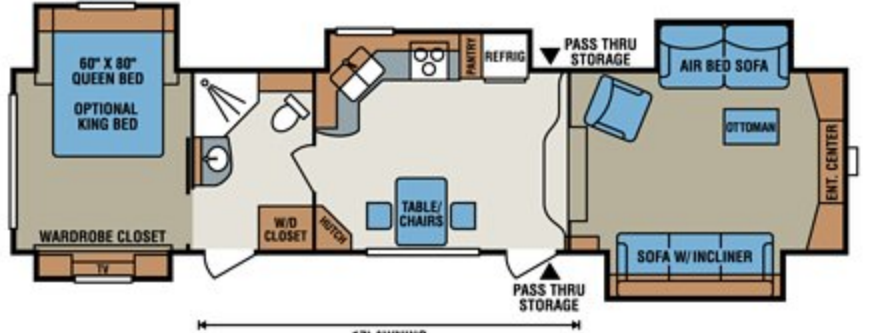
36UL • Features Tri-Level Living



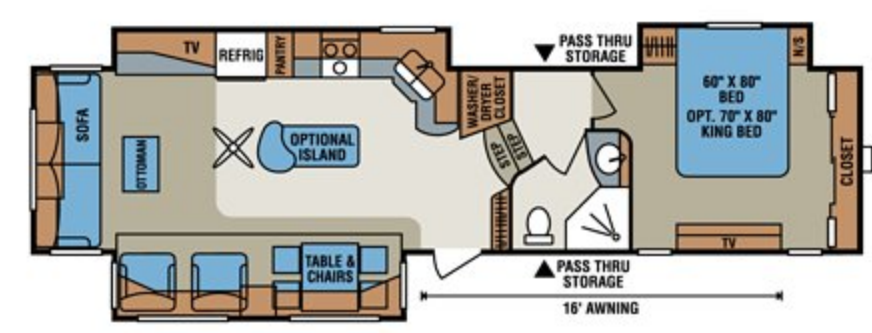
37RB



38CF



38FL



38SR

FIFTH WHEELS	33KS	34IK	35RE	36RK	36RL	36RLB	36UL	37RB	38CF	38FL	38SR
UVW (Unloaded Vehicle Weight)*	10,430	10,720	10,950	12,500	11,390	11,560	11,825	12,420	11,784	11,870	11,745
Dry Hitch Weight*	2,220	2,265	1,890	2,006	2,020	2,110	2,225	1,940	2,326	2,190	2,100
Dry Axle Weight*	8,210	8,455	9,060	10,494	9,370	9,450	9,600	10,480	9,458	9,680	9,645
NCC (Net Carrying Capacity)	3,570	3,280	3,050	1,500	2,610	2,440	2,175	1,580	2,216	2,130	2,255
GVWR	14,000	14,000	14,000	14,000	14,000	14,000	14,000	14,000	14,000	14,000	14,000
Interior Height	76"	76"	76"	76"	76"	76"	76"	76"	76"	76"	76"
Exterior Height	151"	151"	153"	153"	153"	153"	153"	153"	153"	153"	153"
Exterior Width	101"	101"	101"	101"	101"	101"	101"	101"	101"	101"	101"
Exterior Length	34' 11"	35' 4"	37' 7"	38' 8"	37' 11"	37' 11"	38' 8"	40' 8"	40' 6"	39' 11"	39' 9"
Refrigerator (cu. feet)	8	8	8	8	8	8	8	8	8	8	8
Water Heater Cap. (gal. G/E w/DSI)	12	12	12	12	12	12	12	12	12	12	12
Fresh Water Cap. (gal.)	100	100	100	100	100	100	100	100	100	100	100
Waste Water Cap. (gal.)	57	57	57	57	57	57	57	57	57	57	57
Gray Water Cap. (gal.)	57	57	57	114	57	57	57	114	57	57	57
LP Gas Cap. (lbs.)	60	60	60	60	60	60	60	60	60	60	60
Furnace BTUs (1,000s)	35	35	35	35	35	35	35	35	35	35	35
Tire Size	16"	16"	16"	16"	16"	16"	16"	16"	16"	16"	16"
Awning	18'	17'	17'	17'	18'	18'	17'	18'	17'	17'	16'

*This weight reflects the rolling average unit weight for each model. Your trailer weight will vary according to optional equipment.

Cut-Away



- | | | |
|--|--|--|
| 1 High gloss Gel-coat fiberglass | 13 Security light | 23 3/8" decking |
| 2 Automotive design front cap with hitch area LED lighting | 14 Assist grab handle | 24 Vinyl interior ceiling panel |
| 3 Fiberglass rear cap on select models | 15 30" entry door | 25 5/8" tongue and groove plywood floor |
| 4 Heated and enclosed underbelly, insulated and heated water tanks | 16 Extra-large In-floor basement storage | 26 Rack and pinion electric slide with manual override with 2 x 2 tube slide out ram |
| 5 True 6 sided aluminum frame 16" o.c. | 17 Spare tire and hoist | 27 Tinted safety glass windows |
| 6 Bus style slam latch baggage doors | 18 15,000 BTU A/C | 28 Residential style 25 oz. carpet with pad |
| 7 Power jacks | 19 Wire for A/C in bedroom | 29 Residential linoleum |
| 8 16" radial tires with aluminum wheels | 20 Wire for satellite | 30 Insulated ductwork |
| 9 Dexter E-Z Flex® Heavy Duty Rubber Suspension | 21 Calculated R38 reflective insulation on roof, floor, front and rear | 31 Exterior speakers |
| 10 Dexter NEV-R-ADJUST™ Brakes | 22 1 piece seamless roofing material | 32 Heavy duty I-beam frame construction |
| 11 Power awning | | |
| 12 Ladder | | |

Tri-Level Living

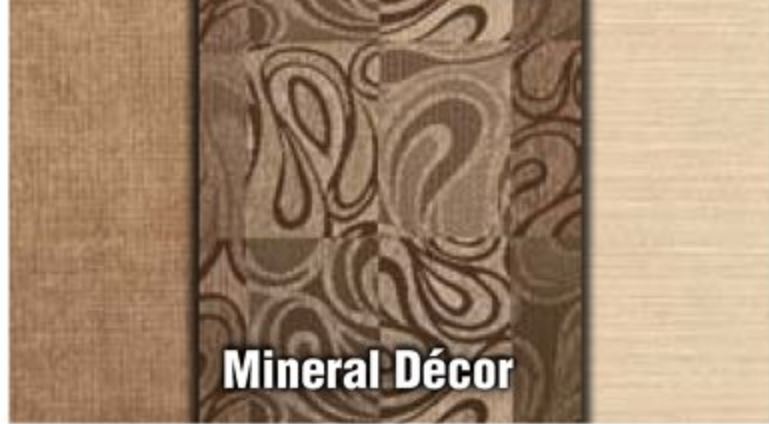


With easy access storage, you'll be able to take all your gear with you.

Coach-Net®

RV Membership Plans

One Year **FREE**
Road Side Assistance
courtesy of KZ!



Mineral Décor



Quartz Décor



Raven Décor

Standards

- Gel Coat Fiberglass Exterior
- Automotive Design Front Cap with Hitch Area LED Lighting
- Black Tank Flush
- Fiberglass Rear Cap (N/A 36RK, 36UL, and 37RB)
- Central Control Center
- Heated and Enclosed Underbelly
- True 6 Sided Aluminum Frame
- Bus Style Slam Latch Compartment Doors
- 12 Gallon Gas/Electric DSI Water Heater
- Power Jacks
- 16" Radial Tires with Aluminum Wheels
- Dexter E-Z Flex® Heavy Duty Rubber Suspension
- Dexter **NEV-R-ADJUST™** Brakes
- Power Awning
- Ladder
- 2 Security Lights
- Assist Grab Handle
- 30# Gas Bottles
- 50 Amp Service with Quick Connect Power Cord
- 30" Entry Door
- In Floor Basement Storage
- Electric Slide Rooms
- Spare Tire and Hoist
- 100 Gallon Fresh Water Tank
- 57 Gallon Black Tank

- 57 Gallon Gray Tank (37RB and 36RK has 114 Gallon)
- Fireplace (N/A on 33KS)
- Residential Rocker Recliner(s)
- Residential Hide-A-Bed Sofa
- Premium Bedding Package
- 80" Memory Foam Mattress
- Gas Struts on Bed Base
- AM/FM/CD/DVD Player with USB Port and Surround Sound
- 40" LCD TV
- 46" LCD TV (38FL Only)
- Built In Shoe Rack in Master Closet (Where Available)
- Corian® Countertop with Accent Insert
- Recessed Sink with Corian® Countertop
- High Rise Faucet with Pull Out Sprayer
- 8 Cubic Foot Refrigerator with Wood Insert
- 30" Microwave
- 22" Oven
- Table and Chairs with 2 Leaves
- Roller Ball Bearing Drawer Guides
- 15,000 BTU A/C
- Wire for A/C in Bedroom
- Porcelain Toilet
- Plumb for Washer and Dryer
- Wire for Satellite
- Wood Framed Mirror Closet Doors (Where Available)
- Glazed Raised Panel Cabinet Doors
- Crown Molding at Ceiling

- Wine Rack (Select Models)
- Day/Night Shades
- Calculated R38 Reflective Insulation on Roof and Floor
- Beauflor® Linoleum
- Ottoman (Select Models)

Options

- Partial Body Paint
- Full Body Paint
- Dyson® Vacuum
- Rear Power Stabilizer Jacks (N/A with Power Package)
- Slide Out Covers
- Dual Pane Windows
- Generator Preparation with Surge Guard® Transfer Switch
- Side by Side 12 Cubic Foot Refrigerator (N/A on 37RB and 35RE)
- King Bed (N/A on 37RB)
- Fan-Tastic Vent® (Living Room, Kitchen, Bedroom, and Bathroom) (Subject to Floorplan)
- Island with Overhead Pendant Light (38SR Only)
- Lighted Threshold and Keyless Entry Door
- 26" TV in Bedroom
- Heat Pump on Main A/C
- 2nd 13,500 BTU A/C in Bedroom
- 2nd 15,000 BTU A/C in Bedroom with Heat Pump
- Dual Pane Windows

- Winegard® Dome Satellite
- Air Ride Hitch
- Bike Rack/Cargo Tray
- Wireless Back-Up Camera
- Remote for Leveling (Available only with Power Package)
- Washer/Dryer (Stack or Combo)
- 7,000 # Axles with "G" Rated Tires (Forced on 36RK)
- Goodyear® Tires - 5 for 7,000 # Axles
- Goodyear® Tires - 5
- 2 Wood Choices: Luxe Maple or Luxe Maple with Antique Crème

Bistro Package (36RK Only)

- Stainless Steel Roll Out Countertops
- 2nd Electric Awning
- Electric Grill
- Refrigerator
- Sink with Hot and Cold Water
- 26" TV on Slide/Pivot
- Ice Maker

Power Package (N/A with Rear Stabilizer Jacks)

- Power Cord Reel
- 4 Point Leveling System



Optional Bike Rack/Cargo Carrier



Optional Dyson® Vacuum



Optional Full Body Paint

ASK ABOUT OUR 2-YEAR LIMITED WARRANTY!



Dealer Satisfaction Index: Ratings of manufacturers, by dealers, have consistently awarded KZ top honors for excellence of design, reliability, overall quality and value, communications and dealer support.

Dealer:



Portions of this brochure were used with the expressed authority of Dexter Axle, but Dexter Axle is not responsible for the accuracy of the information contained herein.

For more product details and in-depth information, visit us on the web at www.kz-rv.com

0985 N 900 W • Shipshewana, IN 46565
E-mail kz@kz-rv.com • www.kz-rv.com

Due to continual research and advances, manufacturer reserves the right to change specifications, design, price and equipment without notice, and assumes no responsibility for any error in this literature. Some items shown are not included as standard or optional equipment.

©2012KZ | 1/20/12 | 10M