



On The Prowl

SABRE

Silhouette



BY PALOMINO



Fifth Wheels & Travel Trailers

VOL. VII



On The Prowl

SABRE

Silhouette



BY PALOMINO



Fifth Wheels & Travel Trailers

VOL. VII

290 REFD

Shown in Taupe Decor

DISCOVER THE BEST

Your search for RV comfort ends here! The Silhouette by Sabre has all you need plus lots of extra features you desire. Open floor plan designs create roomy interiors that include flush floor slide rooms for expanded living space. Attractive stylish decors, quality residential furnishings, and convenient built-in features come together in a truly innovative fifth wheel.



Featuring optional free standing dinette with leaf extension and flip-up storage.

Our rear entertainment area displays the large retractable 32" LCD HD TV surrounded by solid hardwood mortise and tenon cabinetry.

290 REFD

Shown in Taupe Decor

DISCOVER THE BEST

Your search for RV comfort ends here! The Silhouette by Sabre has all you need plus lots of extra features you desire. Open floor plan designs create roomy interiors that include flush floor slide rooms for expanded living space. Attractive stylish decors, quality residential furnishings, and convenient built-in features come together in a truly innovative fifth wheel.



Featuring optional free standing dinette with leaf extension and flip-up storage.

Our rear entertainment area displays the large retractable 32" LCD HD TV surrounded by solid hardwood mortise and tenon cabinetry.





290 REFD

Shown in Taupe Decor



Bedroom and Bathroom

This bedroom & bathroom combination features private shower access. Our residential queen bed displays a standard quilted bedspread with pillow shams surrounded by abundant storage in cabinetry made of solid hard wood.

290 REFD

Shown in Taupe Decor



Bedroom and Bathroom

This bedroom & bathroom combination features private shower access. Our residential queen bed displays a standard quilted bedspread with pillow shams surrounded by abundant storage in cabinetry made of solid hard wood.





290 REDS



Kitchen

Our "Lady of the House" convenient kitchen with a Magic Chef® microwave and a truly large oven for all those home-style baking times. Abundant workspace is available on our large countertop surrounding the residential American Stonecast sink that will withstand 450 degrees of heat.

290 REDS



Kitchen

Our "Lady of the House" convenient kitchen with a Magic Chef® microwave and a truly large oven for all those home-style baking times. Abundant workspace is available on our large countertop surrounding the residential American Stonecast sink that will withstand 450 degrees of heat.



Decor Options



HARDWOOD CABINETS

3 YEAR LIMITED WARRANTY

Standard on all hardwood cabinet doors



Your Sabre Silhouette comes with residential Shaw® nylon carpet with R2X® – the industry's most innovative carpet stain and soil repelling system.



Nutmeg



Taupe



Pesto



Coffee



Caramel



Desert Sand



Decor Options



HARDWOOD CABINETS

3 YEAR LIMITED WARRANTY

Standard on all hardwood cabinet doors



Your Sabre Silhouette comes with residential Shaw® nylon carpet with R2X® – the industry's most innovative carpet stain and soil repelling system.



Nutmeg



Taupe



Pesto



Coffee



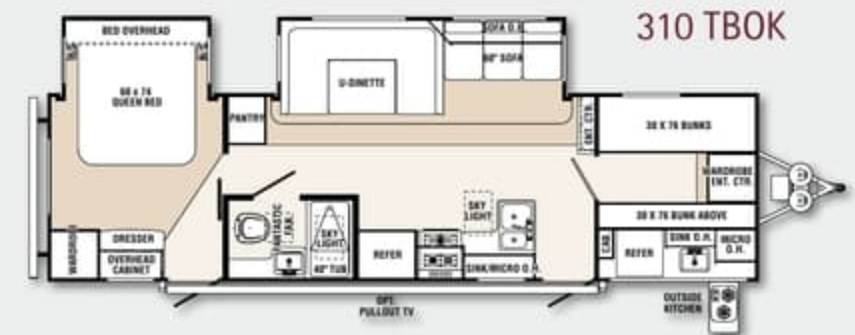
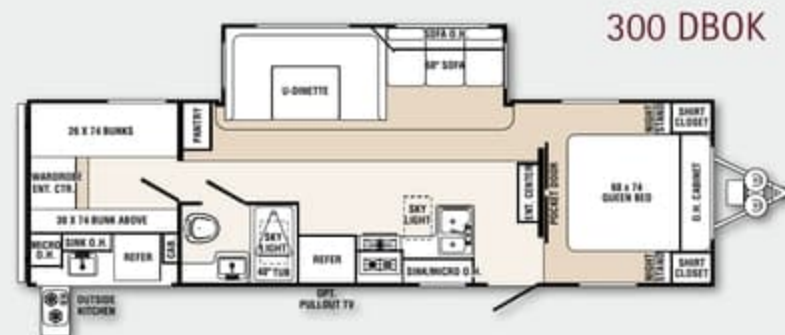
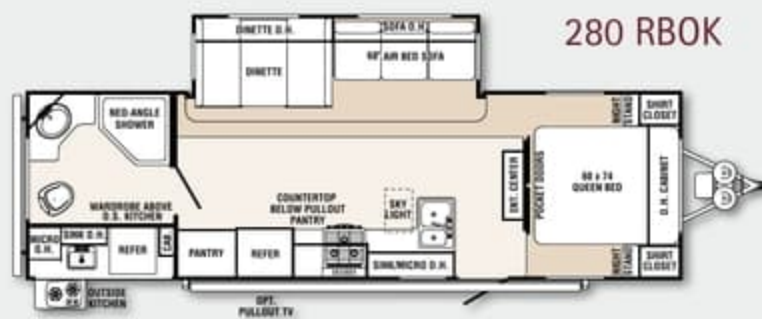
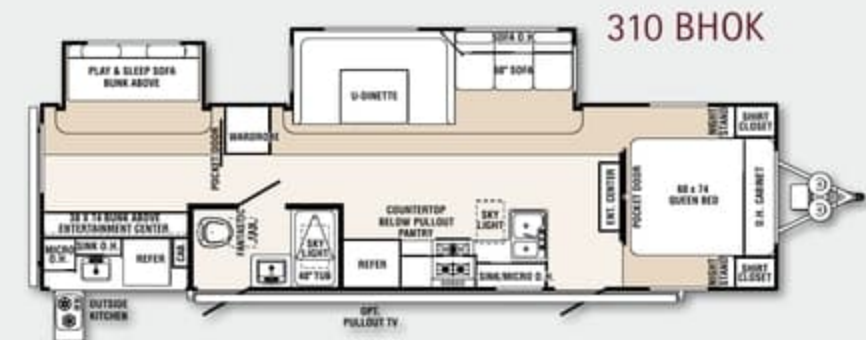
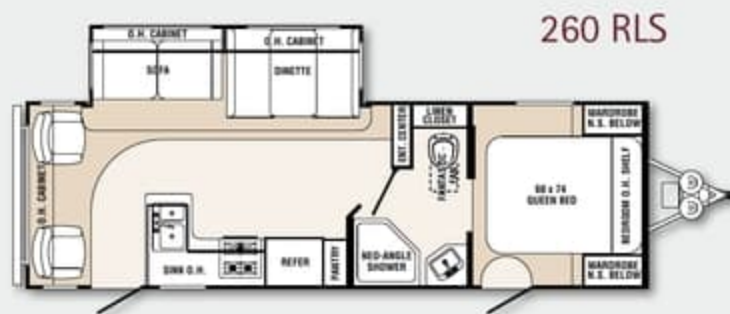
Caramel



Desert Sand

TRAVEL TRAILERS

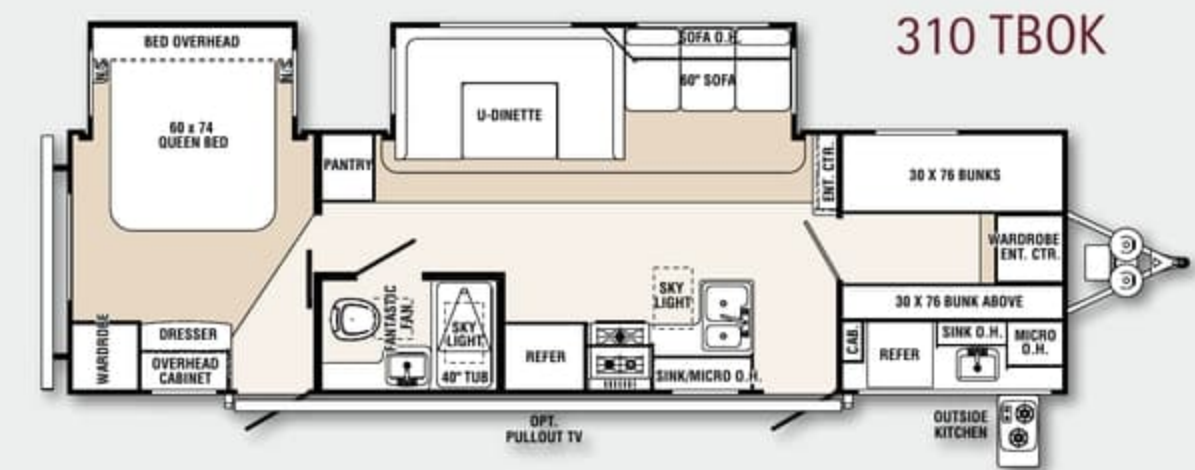
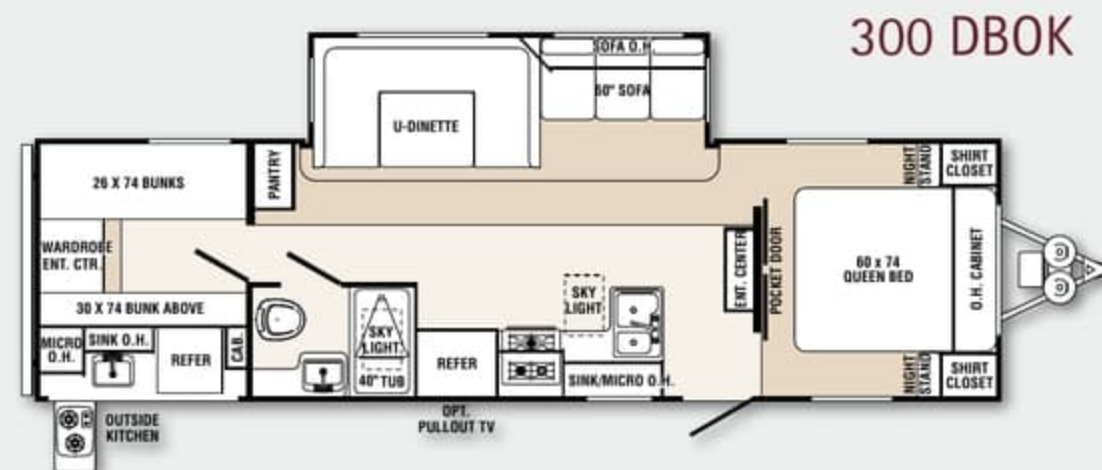
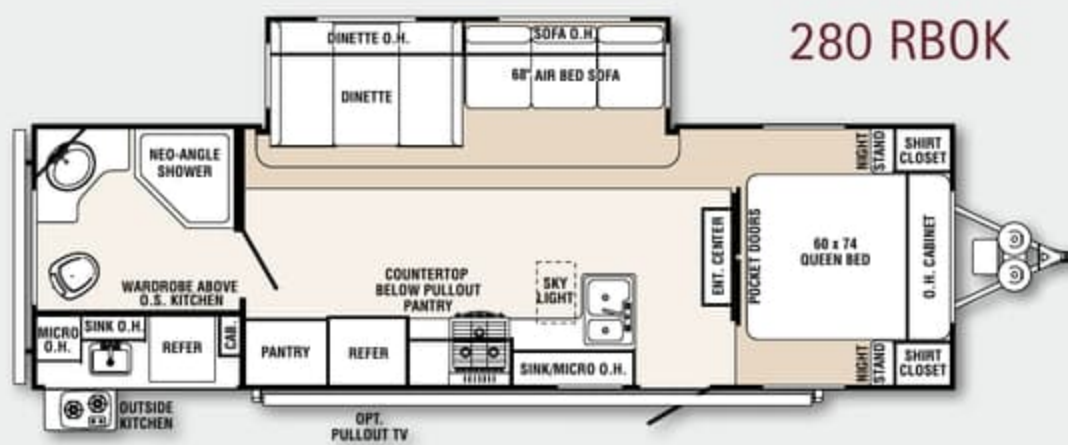
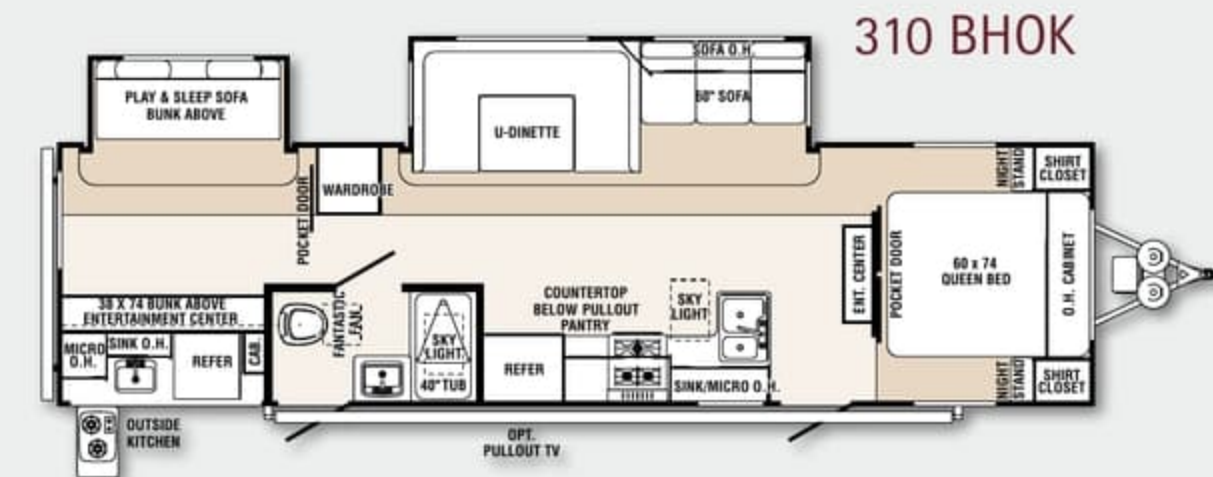
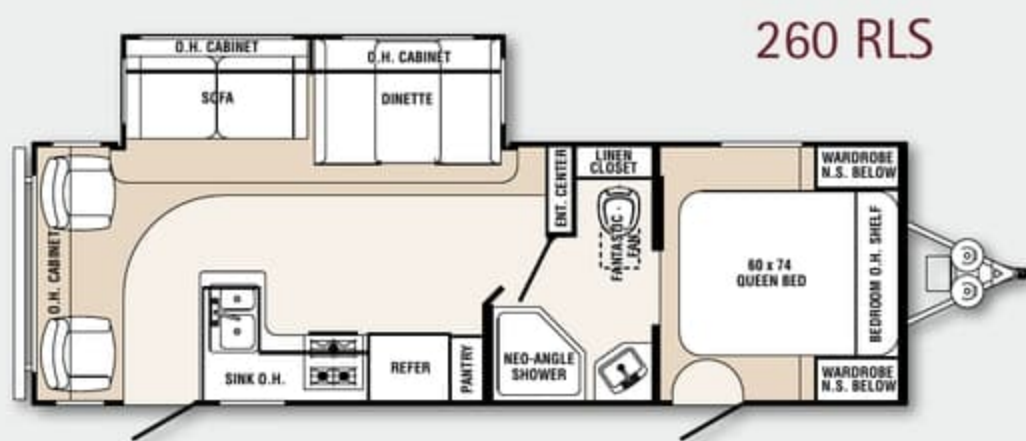
MODEL	260 RLS	280 RBOK	300 BHDS	300 DBOK	310 BHOK	310 TBOK
Hitch Weight	908	669	935	830	876	1,231
Axle Weight	6,011	6,262	6,847	6,445	7,009	6,552
Dry Ship Weight	6,919	6,931	7,782	7,275	7,885	7,783
GVWR	11,068	10,859	11,095	10,990	11,036	11,391
CCC (Cargo Cap.)	4,099	3,848	3,263	3,665	3,101	3,558
Ext. Length	30' 1"	32' 2"	34' 6"	33' 8"	35' 4"	34' 3"
Fresh Water Cap. (gal.)	42	42	42	42	42	42
Black Water Cap. (gal.)	42	42	42	42	42	42
1/2 Bath- Grey Water/Black Water Waste (gal.)	-	-	42	42*	42*	42*
Grey Water Cap. (gal.)	84	84	84	84	84	84
Tire Size (in.)	15"	15"	15"	15"	15"	15"
Awning Size (ft.)	21'	19'	16'	19'	21'	19'



Sabre Silhouette Floor Plans

TRAVEL TRAILERS

MODEL	260 RLS	280 RBOK	300 BHDS	300 DBOK	310 BHOK	310 TBOK
Hitch Weight	908	669	935	830	876	1,231
Axle Weight	6,011	6,262	6,847	6,445	7,009	6,552
Dry Ship Weight	6,919	6,931	7,782	7,275	7,885	7,783
GVWR	11,068	10,859	11,095	10,990	11,036	11,391
CCC (Cargo Cap.)	4,099	3,848	3,263	3,665	3,101	3,558
Ext. Length	30' 1"	32' 2"	34' 6"	33' 8"	35' 4"	34' 3"
Fresh Water Cap. (gal.)	42	42	42	42	42	42
Black Water Cap. (gal.)	42	42	42	42	42	42
1/2 Bath- Grey Water/Black Water Waste (gal.)	-	-	42	42*	42*	42*
Grey Water Cap. (gal.)	84	84	84	84	84	84
Tire Size (in.)	15"	15"	15"	15"	15"	15"
Awning Size (ft.)	21'	19'	16'	19'	21'	19'



Sabre Silhouette Floor Plans

FIFTH WHEEL

MODEL	250 RLUD	250 RLFD	281 RLDS	290 REFD	290 REUD	290 RKDS	290 REDS	291 BHTS	320 FQDS
Hitch Weight	1,151	1,140	1,804	1,395	1,580	1,707	1,631	1,528	1,550
Axle Weight	6,050	5,971	6,201	7,224	7,067	6,421	6,645	7,192	7,179
Dry Ship Weight	7,201	7,111	8,005	8,669	8,647	8,128	8,276	8,720	8,729
GVWR	11,311	11,300	12,204	11,555	11,980	11,867	11,791	11,688	11,710
CCC (Cargo Cap.)	4,060	4,139	4,150	2,886	3,284	3,689	3,031	2,918	2,931
Ext. Length	28' 8"	29' 0"	31' 7"	32' 3"	32' 3"	31' 7"	32' 9"	32' 3"	33' 10"
Fresh Water Cap. (gal.)	42	42	42	42	42	42	42	42	42
Black Water Cap. (gal.)	42	42	42	42	42	42	42	42	42
1/2 Bath- Grey Water/Black Water Waste (gal.)	-	-	-	-	-	-	-	-	-
Grey Water Cap. (gal.)	84	84	42	42	42	84	84	42	84
Tire Size (in.)	15"	15"	15"	15"	15"	15"	15"	15"	15"
Awning Size (ft.)	17'	17'	17'	16'	16'	19'	21'	21'	17'

250 RLUD



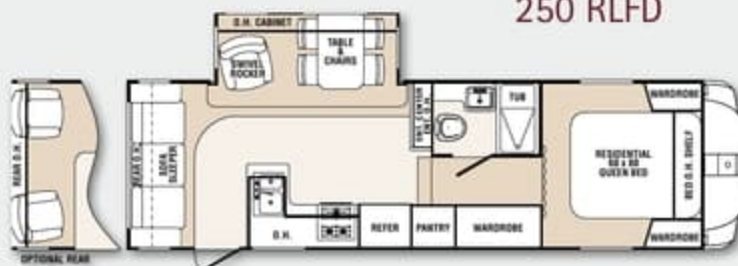
290 REFD



290 REDS



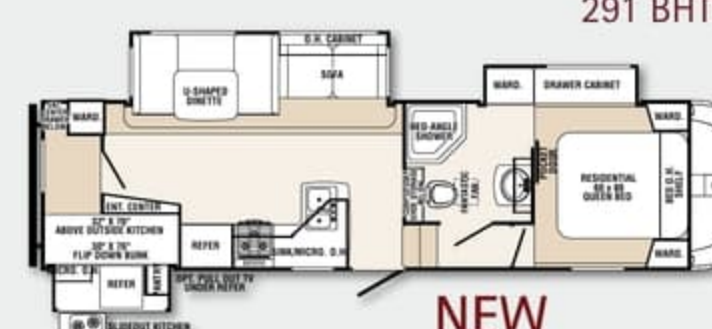
250 RLFD



290 REUD



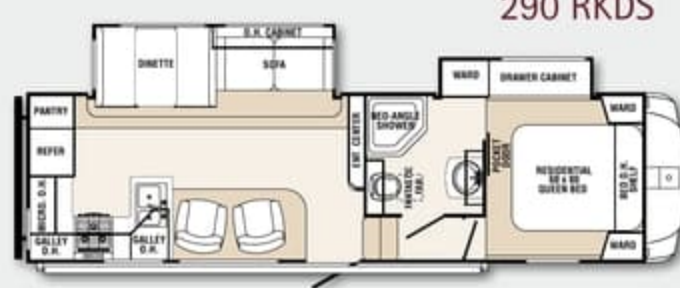
291 BHTS



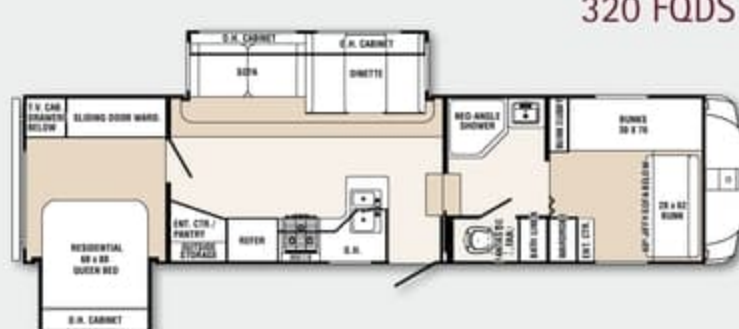
281 RLDS



290 RKDS

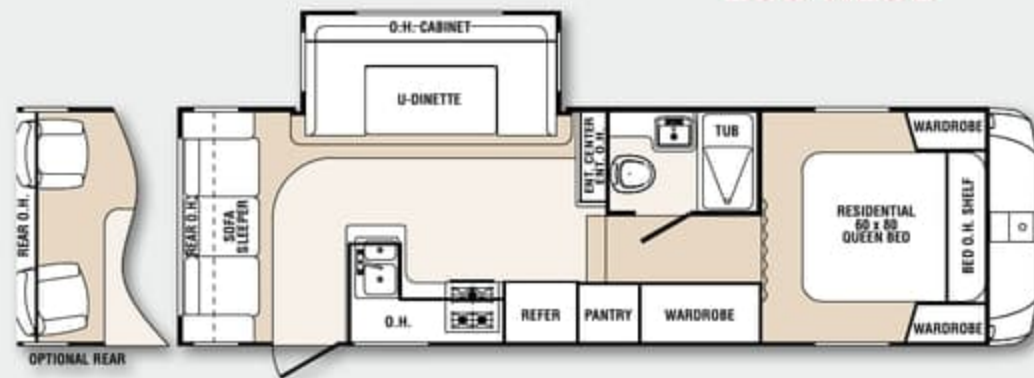


320 FQDS



MODEL	250 RLUD	250 RLFD	281 RLDS	290 REFD	290 REUD	290 RKDS	290 REDS	291 BHTS	320 FQDS
Hitch Weight	1,151	1,140	1,804	1,395	1,580	1,707	1,631	1,528	1,550
Axle Weight	6,050	5,971	6,201	7,224	7,067	6,421	6,645	7,192	7,179
Dry Ship Weight	7,201	7,111	8,005	8,669	8,647	8,128	8,276	8,720	8,729
GVWR	11,311	11,300	12,204	11,555	11,980	11,867	11,791	11,688	11,710
CCC (Cargo Cap.)	4,060	4,139	4,150	2,886	3,284	3,689	3,031	2,918	2,931
Ext. Length	28' 8"	29' 0"	31' 7"	32' 3"	32' 3"	31' 7"	32' 9"	32' 3"	33' 10"
Fresh Water Cap. (gal.)	42	42	42	42	42	42	42	42	42
Black Water Cap. (gal.)	42	42	42	42	42	42	42	42	42
1/2 Bath- Grey Water/Black Water Waste (gal.)	-	-	-	-	-	-	-	-	-
Grey Water Cap. (gal.)	84	84	42	42	42	84	84	42	84
Tire Size (in.)	15"	15"	15"	15"	15"	15"	15"	15"	15"
Awning Size (ft.)	17'	17'	17'	16'	16'	19'	21'	21'	17'

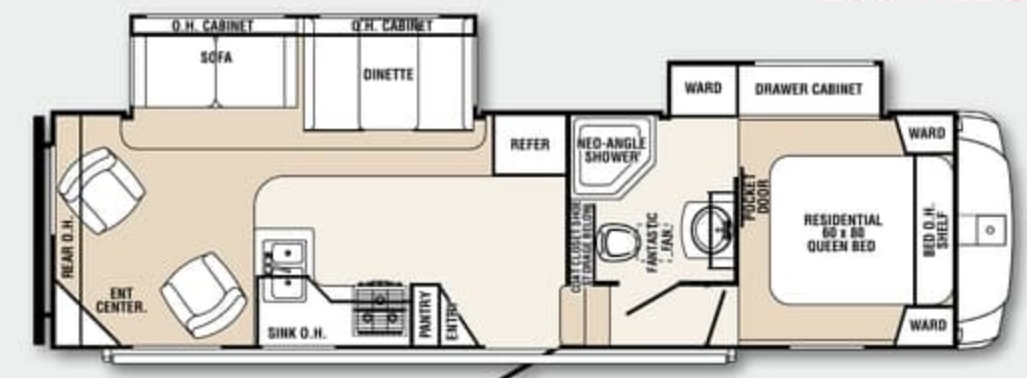
250 RLUD



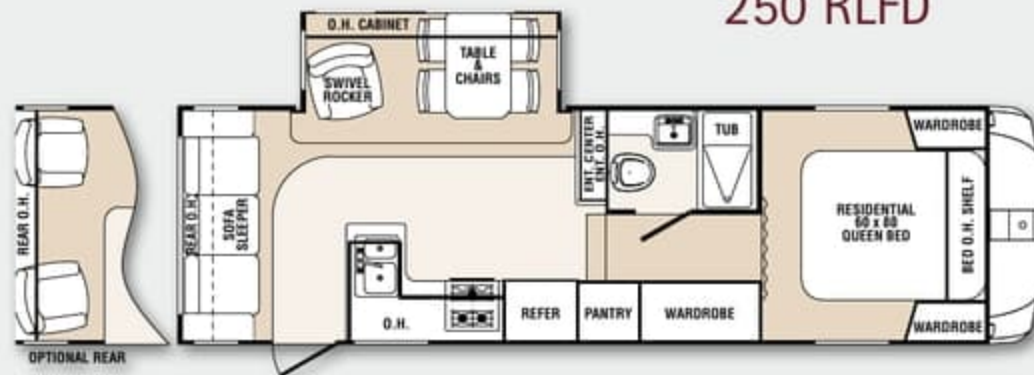
290 REFD



290 REDS



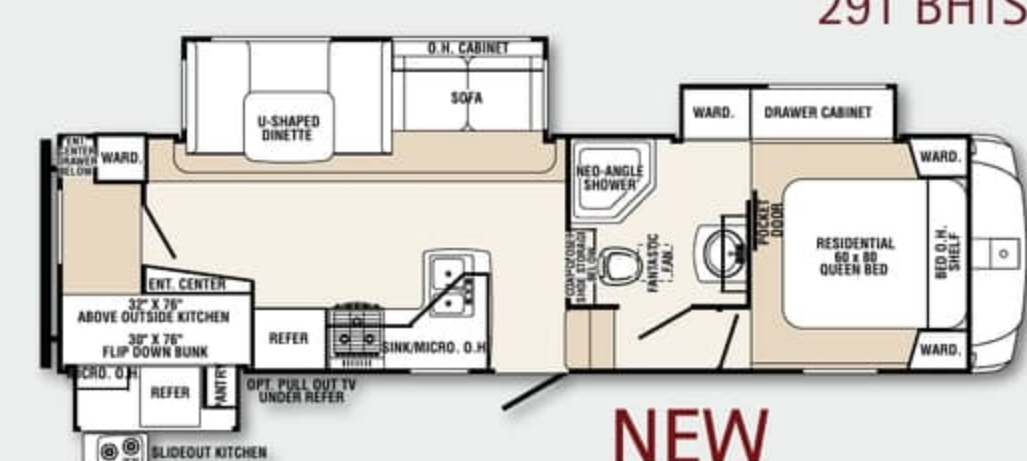
250 RLFD



290 REUD



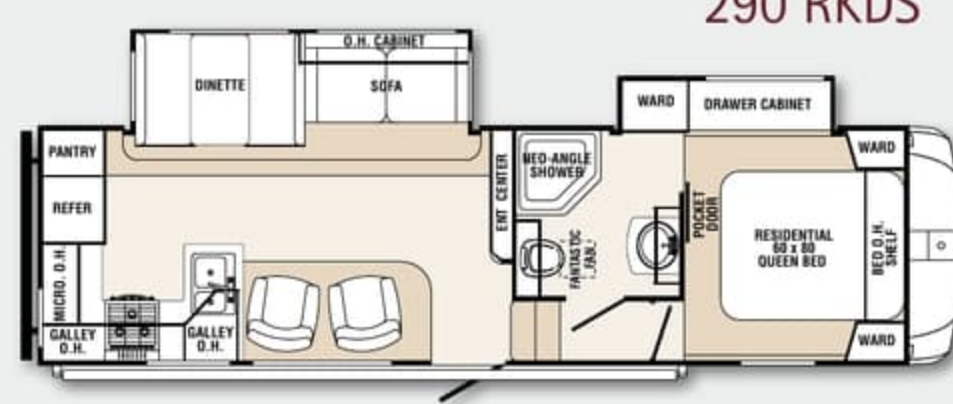
291 BHTS



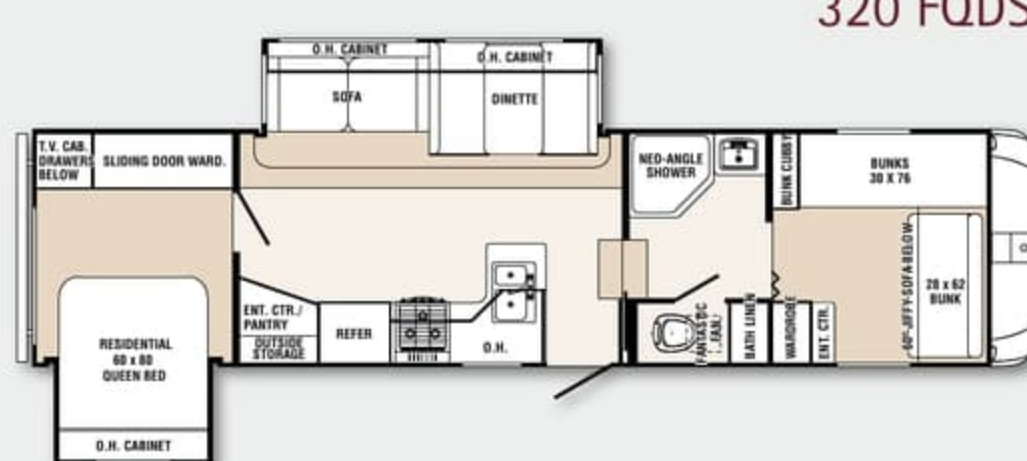
281 RLDS



290 RKDS



320 FQDS



S = Standard | O = Option | SF1 = Silhouette Feature Package 1 (Mandatory) | SF2 = Sabre Feature Package 2 (Mandatory)
 SC = Sabre Cage Construction (Mandatory) | FW = Fifth Wheel | TT = Travel Trailers

KITCHEN	Large 6 cubic foot Dometic® refrigerator	S	BEDROOM	Quilted bedspread with (2) pillow shams	S		Residential Beauflor® linoleum with 7 year cold crack warranty	S		30" entry door (most floorplans)	S
	Raised hardwood front refrigerator panels	SF1		Prewired for bedroom TV	S		Residential Shaw® nylon carpet with R2X™	S		Switchable interior light at each luggage door	S
	Residential-style, self-edged countertop	S		60"x 80" queen innerspring mattress (FW)	S		Carpet pad	S		Outside LP gas hook up with quick connect	S
	Residential American Stonecast sink, under-mount: withstands 450 degrees	S		Serta® mattress	O		Residential ball bearing drawer guides	S		Crank down stabilizer jacks	S
	Raised galley faucet	S		Dual reading lights over bed	S		Flush floor slide rooms in living area	S		Flexible 4" rain spouts	S
	Food grade sink cover & cutting board	S		Large opposing windows for cross ventilation	S		Pleated night shades throughout	S		Rear roof ladder	O
	Full extension drawers	S	AUDIO & VIDEO	Storage under all beds	S		Swivel rocker chair(s) (per floorplan)	S		15" Sumec aluminum wheels	O
	Ball bearing roller guides	S		32" HD LCD TV, living room	SF1	EXTERIOR	Euro style recliner IPO swivel rocker chair	O	UTILITIES	35,000 BTU furnace with automatic ignition	SF1
	Magic Chef® microwave	S		CD/DVD/AM/FM player (12v for dry camping)	SF2		Beauflor® linoleum, plank wood pattern, with 7 year cold crack warranty	O		6 gal. DSI gas/electric water heater with quick recovery	SF1
	22" Oven	S		Stereo inputs include: 3.5 mm audio, SD card and USB	SF2		Air mattress hide-a-bed sofa with linen drawer	O		Hot & cold water exterior shower	SF1
	Installed conveniences: knife holder and silverware drawer	S		(2) Marine grade exterior patio speakers	SF2		6-sided welded aluminum structure; sidewalls, rear wall, front wall, floor, roof, slide-outs (FW only - 5-sided on TT)	SC		13,500 BTU air conditioner with Quick Cool dump	SF1
	Residential size trash can location	S		Digital TV antenna with amplifier booster	S		3/8" thick walk on roof decking	SC		"Within Reach" water heater bypass valve	S
	Residential size pantry (most floorplans)	S		RG-6 satellite prep	S		Fold away entry door handle	SF2		Independent electric slide-outs	S
BATHROOM	110v outlets mounted in dinette and sofa area for convenience	S	INTERIOR	Satellite and cable hook-up	S		Deep tint safety glass windows	SF1		Dual 30 lb. LP bottles	S
	Free standing dinette with leaf extension and flip-up storage (chairs include seat storage)	O		Exterior mounted radio antenna for improved reception	S		Heated and enclosed underbelly	S		Convenience center for hook-ups (FW)	S
	12v ceiling vent & fan	S		Slide-out patio LCD TV (Select floorplans)	O		Aerodynamic fiberglass front cap/fifth wheel docking lights	S		High capacity in-floor heat ducting thermostat	S
	Sky dome over shower	S		Top cabinet doors: solid hardwood, mortise and tenon with arched raised panels	SF2		Attic vents for roof ventilation	S		55 amp power converter with smart fan cooling & LED "bad fuse" indicator	S
	Waterproof shower light	S		Lower cabinet doors: solid hardwood, mortise and tenon with square raised panels	SF2		Quick release snap jack pins mounted forward	S		30 amp service with detachable marine power cord	S
	Residential-style, wood medicine cabinet	S		All cabinet doors utilize Teflon spacers to prevent warping, bending and cracking	S		A&E electric awning with adjustable arms	S		Central command center with tank monitor enclosed in cabinet (most floorplans)	S
	Porcelain toilet with foot flush and "power flush jets"	S		Cabinet face frames are screwed and not stapled together	S		(2) Patio safety lights	S		Black tank flush	S
	Installed conveniences: towel ring, soap dish and toothbrush holder	S		6'1" slide-out room height	S		Safety step light at main entrance	S		15,000 BTU air conditioner with Quick Cool	O
	Air conditioning vent in ALL bathrooms	S					Nitrous filled steel belted radial tires with roadside assistance	S			
							Axles with Super Lube® bearing system	S			
							Electric powered front jacks (FW)	S			

All specifications contained in this literature are based on the latest product information at time of publication. Forest River Inc. reserves the right to make changes at anytime without notice and assumes no responsibility for any error in this literature.

S = Standard | **O** = Option | **SF1** = Silhouette Feature Package 1 (Mandatory) | **SF2** = Sabre Feature Package 2 (Mandatory)
SC = Sabre Cage Construction (Mandatory) | **FW** = Fifth Wheel | **TT** = Travel Trailers

KITCHEN	Large 6 cubic foot Dometic® refrigerator	S
	Raised hardwood front refrigerator panels	SF1
	Residential-style, self-edged countertop	S
	Residential American Stonecast sink, under-mount: withstands 450 degrees	S
	Raised galley faucet	S
	Food grade sink cover & cutting board	S
	Full extension drawers	S
	Ball bearing roller guides	S
	Magic Chef® microwave	S
	22" Oven	S
	Installed conveniences: knife holder and silverware drawer	S
	Residential size trash can location	S
	Residential size pantry (most floorplans)	S
	110v outlets mounted in dinette and sofa area for convenience	S
	Free standing dinette with leaf extension and flip-up storage (chairs include seat storage)	O

BATHROOM	12v ceiling vent & fan	S
	Sky dome over shower	S
	Waterproof shower light	S
	Residential-style, wood medicine cabinet	S
	Porcelain toilet with foot flush and "power flush jets"	S
	Installed conveniences: towel ring, soap dish and toothbrush holder	S
	Air conditioning vent in ALL bathrooms	S

BEDROOM	Quilted bedspread with (2) pillow shams	S
	Prewired for bedroom TV	S
	60"x 80" queen innerspring mattress (FW)	S
	Serta® mattress	O
	Dual reading lights over bed	S
	Large opposing windows for cross ventilation	S
	Storage under all beds	S

AUDIO & VIDEO	32" HD LCD TV, living room	SF1
	CD/DVD/AM/FM player (12v for dry camping)	SF2
	Stereo inputs include: 3.5 mm audio, SD card and USB	SF2
	(2) Marine grade exterior patio speakers	SF2
	Digital TV antenna with amplifier booster	S
	RG-6 satellite prep	S
	Satellite and cable hook-up	S
	Exterior mounted radio antenna for improved reception	S
	Slide-out patio LCD TV (Select floorplans)	O

INTERIOR	Top cabinet doors: solid hardwood, mortise and tenon with arched raised panels	SF2
	Lower cabinet doors: solid hardwood, mortise and tenon with square raised panels	SF2
	All cabinet doors utilize Teflon spacers to prevent warping, bending and cracking	S
	Cabinet face frames are screwed and not stapled together	S
	6'1" slide-out room height	S

	Residential Beauflor® linoleum with 7 year cold crack warranty	S
	Residential Shaw® nylon carpet with R2X™	S
	Carpet pad	S
	Residential ball bearing drawer guides	S
	Flush floor slide rooms in living area	S
	Pleated night shades throughout	S
	Swivel rocker chair(s) (per floorplan)	S
	Euro style recliner IPO swivel rocker chair	O
	Beauflor® linoleum, plank wood pattern, with 7 year cold crack warranty	O
	Air mattress hide-a-bed sofa with linen drawer	O

EXTERIOR	6-sided welded aluminum structure; sidewalls, rear wall, front wall, floor, roof, slide-outs (FW only - 5-sided on TT)	SC
	3/8" thick walk on roof decking	SC
	Fold away entry door handle	SF2
	Deep tint safety glass windows	SF1
	Heated and enclosed underbelly	S
	Aerodynamic fiberglass front cap/fifth wheel docking lights	S
	Attic vents for roof ventilation	S
	Quick release snap jack pins mounted forward	S
	A&E electric awning with adjustable arms	S
	(2) Patio safety lights	S
	Safety step light at main entrance	S
	Nitrous filled steel belted radial tires with roadside assistance	S
	Axles with Super Lube® bearing system	S
	Electric powered front jacks (FW)	S

	30" entry door (most floorplans)	S
	Switchable interior light at each luggage door	S
	Outside LP gas hook up with quick connect	S
	Crank down stabilizer jacks	S
	Flexible 4" rain spouts	S
	Rear roof ladder	O
	15" Sumec aluminum wheels	O

UTILITIES	35,000 BTU furnace with automatic ignition	SF1
	6 gal. DSI gas/electric water heater with quick recovery	SF1
	Hot & cold water exterior shower	SF1
	13,500 BTU air conditioner with Quick Cool dump	SF1
	"Within Reach" water heater bypass valve	S
	Independent electric slide-outs	S
	Dual 30 lb. LP bottles	S
	Convenience center for hook-ups (FW)	S
	High capacity in-floor heat ducting thermostat	S
	55 amp power converter with smart fan cooling & LED "bad fuse" indicator	S
	30 amp service with detachable marine power cord	S
	Central command center with tank monitor enclosed in cabinet (most floorplans)	S
	Black tank flush	S
	15,000 BTU air conditioner with Quick Cool	O

All specifications contained in this literature are based on the latest product information at time of publication. Forest River Inc. reserves the right to make changes at anytime without notice and assumes no responsibility for any error in this literature.

INTERIOR



EXTERIOR



Features

1. Optional free standing dinette with leaf extension and flip-up storage
2. 22" oven
3. 32" HD LCD TV
4. Residential full extension drawer guides
5. Optional air mattress hide-a-bed sofa with linen drawer
6. 6 cubic foot refrigerator with residential wood front
7. LP quick disconnect
8. Platform™ slide-out floors are moisture resistant
9. Axles with Super Lube® bearings
10. 15" radial tires w/optional Sumec aluminum wheels.
11. Detachable 30 amp cord for easy storage
12. Pass thru storage with docking station (FW)
13. "Within Reach" water heater bypass valve

INTERIOR



1



2



3



4



5



6

EXTERIOR



7



8



9



10



11



12



13



Features

- Optional free standing dinette with leaf extension and flip-up storage
- 22" oven
- 32" HD LCD TV
- Residential full extension drawer guides
- Optional air mattress hide-a-bed sofa with linen drawer
- 6 cubic foot refrigerator with residential wood front
- LP quick disconnect
- PlaTTform™ slide-out floors are moisture resistant
- Axles with Super Lube® bearings
- 15" radial tires w/optional Sumec aluminum wheels.
- Detachable 30 amp cord for easy storage
- Pass thru storage with docking station (FW)
- "Within Reach" water heater bypass valve



Learn More
Scan this barcode using
a QR Reader on your
smart phone to learn
more about Forest River.



A Berkshire Hathaway company.

Follow Us On
Facebook



Sabre Silhouette Fifth Wheel TRUE SIX-SIDED ALUMINUM CAGE



Aluminum Welded Rafters • Aluminum Welded Floor
Aluminum Welded Front Frame • Aluminum Welded Rear Frame
Aluminum Welded Door-Side Frame • Aluminum Welded Off Door-Side Frame



PEACE OF MIND

Emergency Roadside Assistance

Forest River Roadside Assistance Card provides free jump starts, tire changes, fuel delivery and lock-out service.

Sabre Silhouette by Palomino

Forest River Inc.
2412 Century Drive, Goshen, IN 46528
Phone: 269-432-3271
www.palominoRV.com

All illustrations and specifications contained in this literature are based on the latest product information at time of publication. Forest River, Inc. reserves the right to make changes in prices, colors, materials, equipment and specifications at anytime without notice and assumes no responsibility for any error in this literature. All weights shown are approximate. All units are shipped F.O.B. Goshen, Indiana. CONSULT YOUR LOCAL DEALER FOR WARRANTY INFORMATION.



Forest River, Inc. encourages our customers to purchase their Forest River products from a local dealership whenever possible for the following reasons:

- 1) Forest River, Inc. dealers are independently owned and operated businesses so priority service and scheduling is at their discretion and is often provided to customers that purchased their unit at that dealership.
- 2) Purchasing locally allows customers to establish meaningful relationships with a dealer, enhancing the RV experience through assistance with product questions, user tips or RV regulations for your state or country, and much more!
- 3) Canadian customers must meet requirements to bring an RV purchased out of the country to their home. These requirements may involve additional inspections and certifications, taxes and fees. Your local Canadian Dealer is a professional at meeting these requirements.
- 4) Scheduling timely warranty repairs and adjustments through a local dealership provides far greater flexibility and convenience to you, the customer!

It is the goal of Forest River, Inc. that all of our RV owners fully enjoy the RV experience and that customer satisfaction meets or exceeds their expectations!



PRE-DELIVERY INSPECTION FACILITY

20,000 square feet of quality assurance. The bare essentials for a premium product. This state-of-the-art facility gives immediate daily feedback to production for quality assurance in every unit built.

Your Sabre Silhouette Dealer:



Learn More
Scan this barcode using
a QR Reader on your
smart phone to learn
more about Forest River.



A Berkshire Hathaway company.



Sabre Silhouette Fifth Wheel TRUE SIX-SIDED ALUMINUM CAGE



Aluminum Welded Rafters • Aluminum Welded Floor
Aluminum Welded Front Frame • Aluminum Welded Rear Frame
Aluminum Welded Door-Side Frame • Aluminum Welded Off Door-Side Frame



PEACE OF MIND

Emergency Roadside Assistance

Forest River Roadside Assistance Card provides free jump starts, tire changes, fuel delivery and lock-out service.

Sabre Silhouette by Palomino

Forest River Inc.
2412 Century Drive, Goshen, IN 46528
Phone: 269-432-3271
www.palominorv.com

All illustrations and specifications contained in this literature are based on the latest product information at time of publication. Forest River, Inc. reserves the right to make changes in prices, colors, materials, equipment and specifications at anytime without notice and assumes no responsibility for any error in this literature. All weights shown are approximate. All units are shipped F.O.B. Goshen, Indiana. CONSULT YOUR LOCAL DEALER FOR WARRANTY INFORMATION.



Forest River, Inc. encourages our customers to purchase their Forest River products from a local dealership whenever possible for the following reasons:

- 1) Forest River, Inc. dealers are independently owned and operated businesses so priority service and scheduling is at their discretion and is often provided to customers that purchased their unit at that dealership.
- 2) Purchasing locally allows customers to establish meaningful relationships with a dealer, enhancing the RV experience through assistance with product questions, user tips or RV regulations for your state or country, and much more!
- 3) Canadian customers must meet requirements to bring an RV purchased out of the country to their home. These requirements may involve additional inspections and certifications, taxes and fees. Your local Canadian Dealer is a professional at meeting these requirements.
- 4) Scheduling timely warranty repairs and adjustments through a local dealership provides far greater flexibility and convenience to you, the customer!

It is the goal of Forest River, Inc. that all of our RV owners fully enjoy the RV experience and that customer satisfaction meets or exceeds their expectations!



PRE-DELIVERY INSPECTION FACILITY

20,000 square feet of quality assurance. The bare essentials for a premium product. This state-of-the-art facility gives immediate daily feedback to production for quality assurance in every unit built.

Your Sabre Silhouette Dealer: