

FLEETWOOD RV

2013 CLASS A DIESEL

EXPEDITION®

N
W  S
EXPEDITION



THE ROAD TO RELAXATION

The moment you step inside, Expedition embraces you with calming comfort and beauty. A spacious, light-filled interior soothes the soul, while plentiful amenities fulfill every need. In your Expedition, relaxation is closer than you think.





WHY BUY EXPEDITION?

Contemporary Interior Décor The décor is so stylish, it may cause your friends to remark, "This is nicer than my house."

Spacious Living The floor plans are designed to maximize the roomy feeling, and the tall ceilings and slides provide even more space.

Name-Brand Appliances and Electronics From the galley to the entertainment system to the bedroom, you'll find name-brand appliances, electronics and furnishings.

Top-of-the-line Components Expedition is outfitted with the finest, from the plush, padded carpeting to the cedar-lined wardrobe in the bedroom suite.

Superior Ride and Handling Fleetwood diesel coaches have earned a reputation for excellent handling, road manners and comfort.



2013 GRAPHICS AND DÉCOR



Both inside and out, we offer a wide selection of colors, styles and finishes. From the moment you lay your eyes on a Fleetwood RV, the high-style graphics and décor collection welcome you with gracious beauty and contemporary design. We've paid attention to every detail. So wherever you are, you'll feel right at home.



SCARLET ROSE



COPPER MIST



POLAR ICE



COCOA PEARL

	PLATINUM BLACK	PONDEROSA CANYON	TOASTED GRANOLA		CABINETRY
SOFA				TOASTED CHESTNUT	
ACCENT					
BEDSPREAD					
COUNTERTOP				BUTTERSCOTCH SPICE	
FLOORING					
CARPET					

STANDARD FEATURES AND OPTIONS

STANDARD FEATURES

INTERIOR THROUGHOUT

- 20,000/25,000 BTU Dual Furnaces
- 84" Interior Ceiling Height
- Complete PEX Plumbing System
- Crown Molding
- Manual Double Roller Shades
- Deluxe Roller Bearing, Full-Extension Drawer Guides & Transit-Ship Locks
- Demand Water Pump w/Filter
- Dual Roof-Mounted, High-Efficiency A/C w/Solar Panel
- Hardwood Cabinet Doors/Drawers
- Wall Sconces
- Wall Switches (Includes Switches for Ceiling Lights & Vents)
- Water Heater Bypass
- Whole Coach Water Filtration System
- Wood Finish Return Air Intake for Furnace
- Water Heater 16-Gallon Output

DRIVER CONVENIENCE

- Adjustable 3-Point Seatbelts at Driver & Front Passenger Seats (w/Adjustable Shoulder Straps)
- Dual Monitors
- Auxiliary Start Circuit
- Battery Disconnect System
- Cruise Control
- Driver-Side Manual Pull-Down Shade
- Driver/Front Passenger Soft-Touch Captain's Chairs w/Reclining Back/Slide Controls w/Power Driver Seat
- Denso® High-Output Auto A/C Heater Combo
- Passenger Armrest w/Integrated Magazine Rack
- Easy-Access Battery Disconnect Switch
- Power Driver/Front Passenger Sun Visors
- Radio Switch Main/Auxiliary Power
- Snack Tray/Service Door at Dash
- Tilt/Telescoping Steering Wheel
- Power Entry Step Cover
- 110-Volt Power Outlet at Dash
- 2 12-Volt Power Outlets at Dash
- Power Passenger Seat w/Power Footrest
- Color Back-Up Monitor w/Side Cameras Integrated in Mirrors
- Touch Screen Radio w/Built-in GPS

GALLEY

- GE 1 cu.ft. Convection Microwave Oven w/Built-in Range Hood & Light
- 3-Burner, High-Output Range w/Sealed Burners & Oven
- Adjustable Cabinet Shelves (Select Cabinets)
- Fan-Tastic® Power Roof Vent w/Wall Switch
- Dometic® 12.2 cu.ft. 4-Door Refrigerator w/Icemaker & Water Dispenser
- Single-Handle Galley Faucet w/Pullout Sprayer
- Dinette Base Cabinet with Freestanding Chairs
- Solid-Surface Countertop w/Sink & Range Covers
- Under-Galley Shelving & Wastebasket

- Window Over Sink
- Laminate Dinette Tabletop w/Solid-Surface Trim

LIVING ROOM

- Sony® 32" LCD HDTV
- Sony® 40" LCD HDTV (40X)
- Sony® 46" LCD HDTV (38S)
- Sony® 5.1 Home Theater System w/Built-in AM/FM/DVD & Surround Sound Speakers
- Custom Fit (by Villa®) Residential Seat Styling
- TV Antenna
- Wall-to-Wall Porcelain Flooring w/ Decorative Tile Inserts

BEDROOM

- Sony® 32" LCD HDTV
- Overhead Cabinets
- Bedspread w/Décor Pillows
- Remote Generator Start Switch
- Deluxe Pillow-Top Innerspring Mattress
- Ventilated Rear Wardrobe w/Cedar Lining, Carpeted Floor & Wire Organizer
- Wardrobe Lighting
- Plush Wall-to-Wall Carpet w/Carpet Pad in Bedroom (36M, 38B, 40X)

BATHROOM

- A/C Venting
- Cabinet Toe Kicks
- Fan-Tastic® Power Roof Vent w/Wall Switch
- Glass Shower w/Skylight and Low Threshold
- Single-Handle Faucet
- Hardwood Bath Door/Trims
- Make-Up Lights (Some Models)
- Porcelain Toilet w/Water Saver
- Halogen Lighting Over Sink

SAFETY/CONVENIENCE (INTERIOR)

- Carbon Monoxide Detector/Alarm
- Energy Management System (EMS) w/Soft-Start
- Fire Extinguisher
- Multiple Seatbelt Locations
- Propane Detector/Alarm
- Smoke Detector/Alarm
- Neutral Loss Protection

EXTERIOR THROUGHOUT

- 120V/12V AC/DC Converter
- 2,000-Watt Pure Sine Wave Inverter w/Remote
- 4-Point Automatic Levelers
- 50-Amp Service
- 8.0 kW Onan® Quiet Diesel Generator
- Awning Rail/Drip Molding (Both Sides)
- Molded Fiberglass Roof
- Doorside Patio Receptacle
- DSS Pre-wire
- Dual-Pane Windows w/Screens
- Fiberglass Wheel-Well Trims
- Full-Body Paint w/Color & Graphics
- Weather Pro Power Awnings (Patio Awning Includes Wind Sensor)

- Fiberglass Front/Rear Caps w/High-Mounted Taillights
- Water Pump Switch (Multiple Locations)
- Heat Pump in Bedroom A/C

AUTOMOTIVE

- Aluminum Wheels
- Fog Lamps
- Mud Flaps
- Color Rear & Side-Vision Camera System
- Single-Motor Windshield Wipers w/Wet Arm
- Underhood Utility Light
- Large One-Piece Bonded-in Windshield
- Heated Chrome Power Exterior Mirrors w/Turn Signals & Side-View Cameras

SAFETY/CONVENIENCE (EXTERIOR)

- 20' Sewer Hose
- 4-Wheel ABS Brakes
- Automotive Safety Glass
- Automatic Generator Start System
- Daytime Running Lights
- Easy-Sweep Flooring at Entry Step
- Entry Door w/Screen Door & Deadbolt Lock
- Four 6V/Deep-Cycle House Batteries
- Lighted Entry Assist Handle
- Power Entry Step
- Remote/Heated Rear-View Mirrors
- Black Tank San-T-Flush™ System
- Touch Sensor Tank Monitoring System
- Utility Compartment w/Exterior Shower
- Rear Side Marker Lights

STORAGE

- Continuous One-Piece Compartment Bulb Seal
- Pass-Through Storage
- Side Swinging Luggage Doors
- Insulated Aluminum Luggage Doors w/Single-Paddle Metal Latches & Corrosion-Resistant Steel Hinges
- Large Compartment Doors
- Lighted Luggage Compartments

BODY STRUCTURE

- Aluminum Interlocking Floor/Wall/Ceiling Framing
- Molded Fiberglass Roof
- Heated Water & Holding Tank Compartments
- Quiet Cool Ducted A/C
- Vacu-Bond® Upper/Lower Floors, Walls & Ceilings
- Power Bridge® Chassis Construction

OPTIONS

INTERIOR

- CSA Package (Canadian Specs)**
- Central Vacuum System
- Stackable Washer & Dryer
- Power Sun Visors

GALLEY

- 19 cu. ft. Residential Refrigerator w/Two Additional Batteries & 2800 watt Inverter
- 3-Burner, High-Output Cooktop w/Sealed Burners (38S)

LIVING ROOM

- Sony® 32" LCD HDTV in Front Overhead
- L-Shaped Sofa w/Incliners (38S)
- Expandable L-Sofa (40X)
- U-Shaped Dinette/Sofa (38B, 40X)
- Facing Dinette (36M, 38S, 40X)
- Dual Wardrobe (38B)
- Desk (38B)

BEDROOM

- Queen Bed with Memory Foam Mattress
- King Bed with Memory Foam Mattress (36M, 38S, 40X)
- Queen Air Mattress
- King Air Mattress (36M, 38S, 40X)

EXTERIOR

- Exterior Entertainment Center w/Sony® 32" LCD HDTV and High Output, Splashproof AM/FM/DVD Sound System
- Remote Keyless Entry
- Window Awning Package
- Rear Rockguard
- Clear Front Protective Mask Film
- 1st Full Bay 90" Slide Tray
- 1st Full Bay 36"/54" Slide Trays
- 2nd Full Bay 54" Slide Trays (38B)
- DSS Stationary Satellite Dish

FLEETWOOD ADVANTAGES

- Sony® LCD HDTVs
- Sony® 5.1 Home Theater System w/Surround Sound
- HDMI Electronic Components/Cables Throughout Coach
- TV & Home Theater Remote Control Operation
- Built-In HDMI, Satellite Receiver AV Input Jack
- Single, Digital, LED Extend Retract Switch that Combines Five (5) Functions Including: Awnings, Step Well Cover & Slide-Out Functions, Into One (1) Easily-Accessible Control
- 50-Amp Energy Management System
- 110AC Outlet in Dash Area
- Full-Wall Slide Technology
- Vacu-Bond® Walls w/Smooth High-Gloss Exterior Fiberglass
- Large One-Piece Bonded-in Windshield
- Pass-Through Storage
- Side Swinging Luggage Doors
- Deluxe Roller Bearing, Full-Extension Drawer Guides
- 84" Interior Ceiling Height
- Power Bridge® Chassis Construction

**CSA Standards may require substitution or deletion to achieve conformance

FLOOR PLANS

36M



INTERIOR STORAGE CAPACITY: 221 CU. FT.
EXTERIOR STORAGE CAPACITY: 139 CU. FT.

Available options: 087, 131, 144, 830, 853, 854, 855, 856

38B



INTERIOR STORAGE CAPACITY: 217 CU. FT.
EXTERIOR STORAGE CAPACITY: 181 CU. FT.

Available options: 087, 131, 144, 635, 830, 853, 854, 855, 856, 878, 883

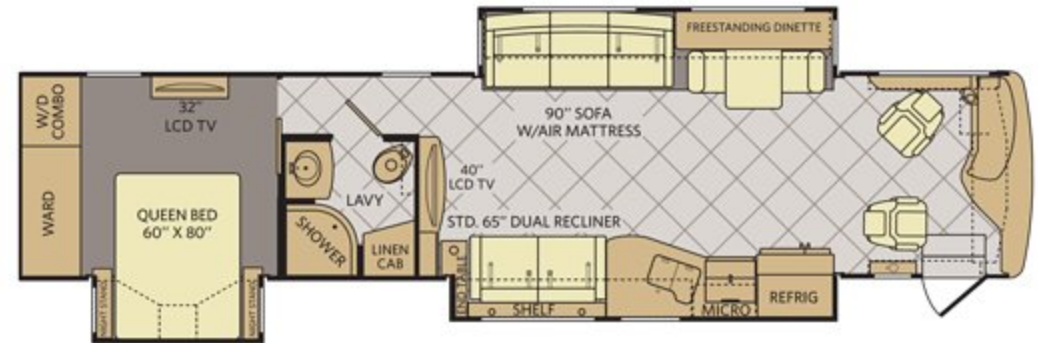
38S



INTERIOR STORAGE CAPACITY: 138 CU. FT.
EXTERIOR STORAGE CAPACITY: 112 CU. FT.

Available options: 087, 116, 131, 144, 194, 853, 854, 855, 856

40X



INTERIOR STORAGE CAPACITY: 197 CU. FT.
EXTERIOR STORAGE CAPACITY: 208 CU. FT.

Available options: 087, 116, 131, 144, 191, 635, 830, 853, 854, 855, 856

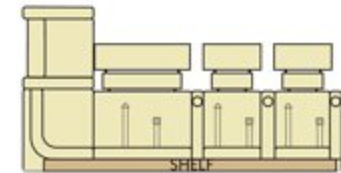
FLOOR PLAN OPTIONS



OPT. 087
FRONT 32"
LCD TV



OPT. 116
3-BURNER
COOKTOP



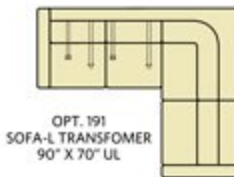
OPT. 194
134" x 70" VILLA ULTRALEATHER
TRANSFORMER SOFA WITH INCLINERS
& MANUAL FOOTRESTS



OPT. 131
STACKABLE W/D



OPT. 144
RESIDENTIAL REFRIG

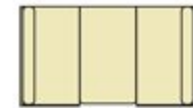


OPT. 191
SOFA-L TRANSFORMER
90" x 70" UL

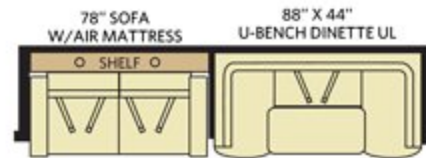


70" SOFA
W/AIR MATTRESS

OPT. 635 - 38B
U-SHAPED DINETTE / SOFA



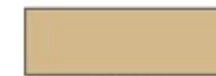
OPT. 830
FACING DINETTE



78" SOFA
W/AIR MATTRESS

88" x 44"
U-BENCH DINETTE UL

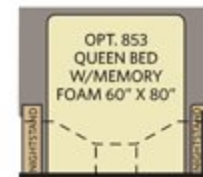
OPT. 635 - 40X
U-SHAPED DINETTE / SOFA



OPT. 883
DUAL WARDROBE



OPT. 878
DESK



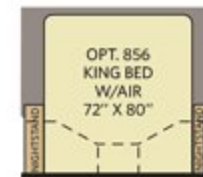
OPT. 853
QUEEN BED
W/MEMORY
FOAM 60" x 80"



OPT. 854
KING BED
W/MEMORY
FOAM 72" x 80"



OPT. 855
QUEEN BED
W/AIR
60" x 80"



OPT. 856
KING BED
W/AIR
72" x 80"

WEIGHTS & MEASUREMENTS

CHASSIS	POWER BRIDGE*			
MODELS	36M	38B	38S	40X
Wheelbase (inches)	228"	252"	252"	276"
GVWR (lbs) ¹	32,400	32,400	32,400	32,400
Front GAWR (lbs) ²	12,400	12,400	12,400	12,400
Rear GAWR (lbs) ²	20,000	20,000	20,000	20,000
GCWR (lbs) ³	39,900	42,400	42,400	42,400
Hitch Rating Weight (lbs) ¹	7,500	10,000	10,000	10,000
Tongue Weight (lbs) ¹	750	1,000	1,000	1,000
Fuel Capacity (gal)	100	100	100	100

POWER BRIDGE® CHASSIS

Model: Freightliner® XCM Series
Engine: Cummins® ISB 6.7L
Transmission: Allison® 3000 MH 6-Speed
 w/Electronic Shifter

Alternator: Delco Remy 160 Amp
Torque: 800 lb-ft @ 1,800 RPM
Horsepower: 360HP

DIMENSIONS & CAPACITIES

MODELS	36M	38B	38S	40X
Overall Length (inches) ⁴	36' 7.5"	38' 7.5"	38' 7.5"	41' 7.5"
Overall Height (with A/C)	12' 10"	12' 10"	12' 10"	12' 10"
Overall Width (maximum) ^{5,6}	102"	102"	102"	102"
Interior Height (maximum)	84"	84"	84"	84"
Interior Width (maximum)	96"	96"	96"	96"
Fresh Water Holding Tank (gal)	105	105	105	105
Grey Water Holding Tank (gal)	75	75	75	75
Black Water Holding Tank (gal)	50	50	50	50
Appliance Propane Tank (gal) (WC) ⁷	38.7	38.7	38.7	38.7
Water Heater Tank (gal)	10	10	10	10

ADDENDUMS

- GVWR (Gross Vehicle Weight Rating) is the maximum permissible weight of this fully loaded motorhome. The GVWR is equal to or greater than the sum of the (UVW) unloaded vehicle weight plus the (OCCC) occupant cargo-carrying capacity.
- GAWR (Gross Axle Weight Rating) is the maximum permissible loaded weight a specific axle is designed to carry.
- GCWR (Gross Combined Weight Rating) is the value specified by the motorhome manufacturer as the maximum allowable loaded weight of this motorhome with its towed vehicle. Towing and braking capacities may be different. Refer to Fleetwood and chassis manufacturer's manuals for complete information.
- Length measured from front bumper to rear bumper (excludes accessories).
- Excludes safety equipment and awnings.
- Motorhomes feature a body width over 96" which will restrict your access to certain roads. Before purchasing, you should research any state and/or province road laws which may affect your usage.
- Tank manufacturer's listed water capacity (WC). Actual propane capacity is 80% of water listing as required by the safety code.

† The chassis manufacturer recommends the installation of a supplemental brake control system to activate the brakes on the vehicle or trailer you are towing. Hitch receiver ratings expressed are maximum for the hitch receiver installed and may require the purchase of additional equipment that is dependent on the weight of the towed load. Consult with hitch receiver manufacturer for further information.

†† Minimum Towable Load is the available weight, up to GCWR, when the coach is fully loaded to maximum GVWR. However, if the coach is loaded to something less than maximum GVWR, that extra available weight can be added to your Towable Load. For example, if your coach is loaded to 1000lbs less than maximum GVWR, your Towable Load increases accordingly.

* UVW and OCCC are found on the label containing the federal certification tag in each RV.

IMPORTANT—PLEASE READ: Product information, photography and illustrations included in this publication were as accurate as possible at the time of printing. For further product information and changes, please visit our website at www.fleetwoodrv.com or contact your local Fleetwood RV dealer. Prices, materials, design and specifications are subject to change without notice. All weights, fuel, liquid capacities and dimensions are approximate. Fleetwood RV has designed its recreational vehicles to provide a variety of uses for its customers. Each vehicle features optimal seating, sleeping, storage and fluid capacities. The user is responsible for selecting the proper combination of loads (i.e., occupants, equipment, fluids, cargo, etc.) to ensure that the vehicle's capacities are not exceeded.

WHY FLEETWOOD RV?



Quality

There's no cutting corners. Skilled craftsmen build every Fleetwood RV for maximum durability and longevity.



Trust

More people trust Fleetwood RV. After all, we've spent over 60 years perfecting RVs, earning the loyalty of generations of RVers.



Passion

We're truly passionate about the RV lifestyle. Fleetwood RV was founded by RV enthusiasts, and that tradition continues today.



Safety

You've got precious cargo. So we've engineered dozens of innovative safety features into our motor homes to give you more peace of mind.



Service

Help is nearby with 24/7 emergency Fleetwood RV Trusted Roadside Assistance*. And when you need an upgrade or repair, you'll find Fleetwood RV dealers all across North America ready to assist you.



Warranty

Exclusive RV OwnerCare warranty. See your Fleetwood RV dealer for details.

* All 2013 Fleetwood RV motorhomes include a 1-year emergency Fleetwood RV Trusted Roadside Assistance membership. For complete info, see your Fleetwood RV dealer.

**For complete info, see your Fleetwood RV dealer.

www.FleetwoodRV.com



RV OWNERCARE**

Limited one-year/15,000-mile coach warranty and three-year/45,000-mile structural warranty, whichever occurs first, and it is fully transferable for the first 12 months. RV OWNERCARE is one of the RV industry's most comprehensive programs and includes systems, appliances, components and construction, with no deductible and no service charge. RV OWNERCARE coverage is provided by a company that will be around in the future to service your needs. See your nearest Fleetwood RV dealer for a full explanation of benefits and restrictions.

CONTACT US

To locate a dealer near you, visit our website at www.fleetwoodrv.com or call 1-800-322-8216. We can also be contacted at Fleetwood RV Customer Relations, P.O. Box 1007, Decatur, IN 46733.

IMPORTANT—PLEASE READ

Product information, photography and illustrations included in this publication were as accurate as possible at the time of printing. For further product information and changes, please visit our website at www.fleetwoodrv.com or contact your local Fleetwood RV dealer. Prices, materials, design and specifications are subject to change without notice. All weights, fuel, liquid capacities and dimensions are approximate. Fleetwood RV has designed its recreational vehicles to provide a variety of uses for customers. Each vehicle features optimal seating, sleeping, storage and fluid capacities. The user is responsible for selecting the proper combination of loads (i.e., occupants, equipment, fluids, cargo, etc.) to ensure that the vehicle's capacities are not exceeded.



FLEETWOOD RV IS AN
ALLIED SPECIALTY VEHICLE COMPANY.



YOUR LOCAL FLEETWOOD RV DEALER IS: