

www.keystonerv.com/Terrain

TERRAIN

ULTRALITE *by Outback*



FULL-SIZED
FULL-SIZED ULTRA LITE TRAVEL TRAILERS

TERRAIN

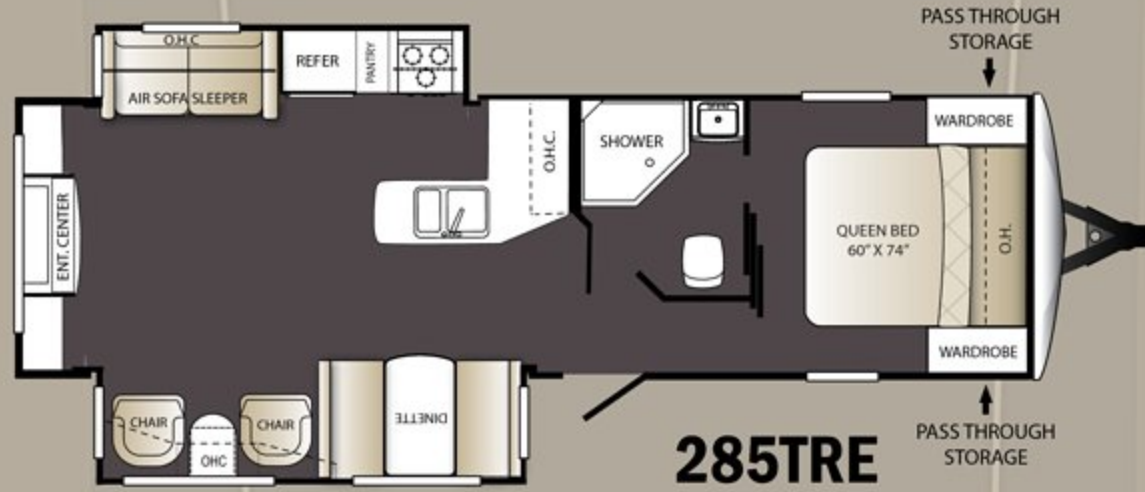
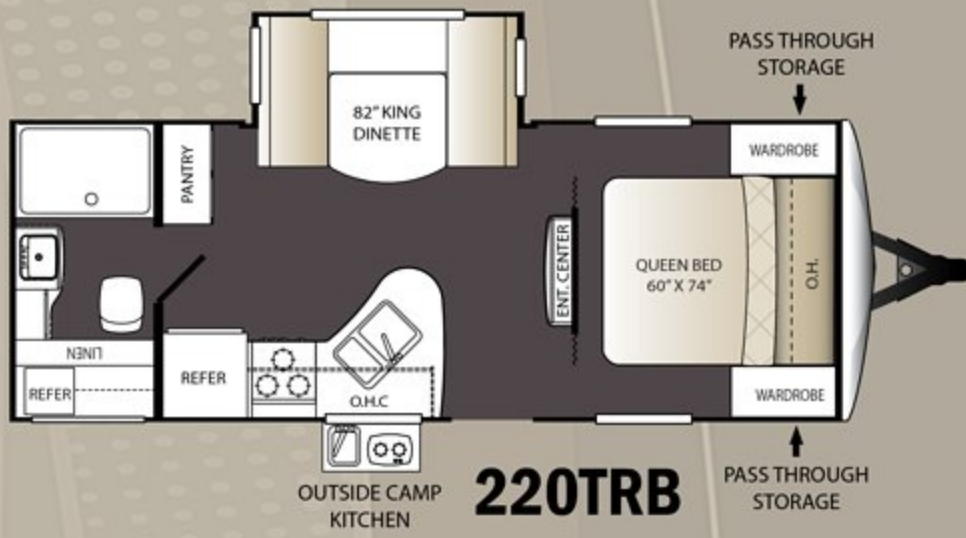
ULTRALITE by Outback



TERRAIN 299TBH TRAVEL TRAILER | SHOWN IN SUMMIT DECOR



- A.** Oversized cabinets and drawers increases the storage in the Terrain kitchen to levels not seen in most light weights. Also offers vaulted ceilings which gives you 7' ceiling height.
- B.** Second entrance to bathroom
- C.** Enjoy great outdoor cooking with family and friends on the outside camp kitchen. (N/A on 285TRE)
- D.** Queen size bed with overhead storage and two full length wardrobes on each side of the bed.



WEIGHTS and Measurements

	220TRB	273TRL	285TRE	299TBH	321TBH
SHIPPING WEIGHT	TBD	5758	TBD	6343	6516
CARRYING CAPACITY	TBD	2042	TBD	2157	1984
HITCH WEIGHT	TBD	675	TBD	790	885
EXTERIOR LENGTH	26'	30' 0"	TBD	32' 6"	34' 5"
EXTERIOR WIDTH	96"	96"	TBD	96"	96"
EXT. HEIGHT - A/C TOP	10' 11"	10' 11"	TBD	10' 11"	10' 11"
FRESH WATER (GAL.)	43	43	TBD	43	43
WASTE WATER (GAL.)	30	30	TBD	30	30
GRAY WATER (GAL.)	30	30	TBD	65	60
LP CAPACITY (LBS.)	40	40	TBD	40	40
AWNING	TBD	20'	TBD	19'	19'



DECOR Options

MOONLIGHT

SUMMIT



STANDARDS

OPTIONS*

Living Area

- Deluxe ash cabinetry
- 36" flush floor slides
- Large panoramic windows
- Pre-drilled and screwed cabinetry
- Custom designed box valance with lambrequins
- Linoleum flooring
- Large wood side drawers with steel guides
- Large overhead cabinets
- 32" HDTV
- Pleated shades
- Vaulted ceiling

Kitchen

- Deep single basin sink with 3" drains
- Two door 6 cu. ft. refrigerator
- High-rise faucet
- 3 burner range with oven
- Microwave
- Upgraded laminate countertops

Bedroom

- Deluxe innerspring mattress
- TV hook-up
- Jalousie windows for maximum ventilation
- Residential bedspread
- His and her lights
- Bedroom speakers
- 2 Full length wardrobes

Bathroom

- Power roof vent
- Skylight over tub
- Tub surround
- Garden shower (most models)
- Deluxe medicine cabinet
- Large linen closet (most models)

Appliances

- AM/FM/CD stereo with DVD player, MP3 hookup and bluetooth enabled
- Two door 6 cu. ft. refrigerator
- 3 burner range with oven
- Six gallon gas/electric DSI water heater by pass with 16.2 gallons per hour "quick recovery"
- 13,500 BTU AC wall thermostat
- 30,000 BTU furnace
- Microwave

Exterior Standards

- Molded fiberglass front cap
- Champagne colored fiberglass
- Black framed tinted jalousie safety glass windows
- Triple radius entry step
- Black tank flush
- Extra large baggage doors, 1" thick with continuous hinge and rubber D-seal
- Extended drip caps and full length drip rail
- Porch light
- Hitch light
- Weather encapsulated body trim
- Exterior 120V receptacle
- Heated enclosed underbelly including tanks and valves
- LP tank cover
- Automotive style fender skirts
- Double welded dual battery brackets
- Exterior speakers
- Easy lube axles
- Outside camp kitchen
- Exterior quick connect LP hook-up
- Stabilizer Jacks (4)
- Satellite ready

Walls – Construction

- Welded aluminum walls with R7 insulation
- Solid block foam insulation

Roof

- 5" Radius, vaulted galvanized steel, tapered trusses on 16" centers
- 3/8" roof decking
- One-piece EPMD rubber roof
- R14 blanket insulation

Floor

- 2" welded aluminum laminated floor
- R10 block foam insulation
- Wrapped vapor barrier
- Polypropylene enclosed heated underbelly encloses tanks and valves

Chassis

- Leaf spring equalizing suspension system
- Powder coated I-beam
- EZ lube axles
- 10"- electric brakes
- 15" radial tires
- 15" spare tire, carrier & cover

Utilities

- 55-amp converter
- 20 lbs. LP bottles with auto changeover
- TV antenna with booster, cable TV
- 30-amp shore power line
- LP leak detector
- Smoke detector
- Carbon monoxide detector
- Fire extinguisher
- Tinted safety glass windows
- Break-away switch
- Safety chains
- Manual slide backup on all electric slide outs
- Carbon monoxide detector

Terrain Exterior Group*

- Champagne colored fiberglass
- Molded fiberglass front cap
- Laminated aluminum sidewalls
- Tinted safety glass windows
- TV antenna w/ booster
- Cable TV/Sat prep
- 15" Radial tires w/spare tire
- Stabilizer jacks
- Black tank flush
- Heavy duty easy lube axles
- Outside camp kitchen (most models)
- Electric awning
- Fully enclosed and heated underbelly
- Exterior speakers
- Patio light

Terrain Interior Group*

- Vaulted ceiling
- AM/FM/CD/DVD Player - bluetooth enabled
- 3 Burner range with oven
- 32" LCD HDTV (most models)
- Skylight in bath
- Ducted A/C
- Microwave oven
- Pleated shades
- 6 Gal. gas electric DSI water heater
- Large double door refrigerator
- Deluxe sleeper sofa

* Denotes STD Build Options



www.keystonerv.com/Terrain

TERRAIN
ULTRALITE by Outback



www.keystonerv.com

2642 Hackberry Drive
PO Box 2000
Goshen, IN 46527-2000
(574) 535-2100

YOUR Local DEALER IS:

FEBRUARY 2013



Go RVing
Life's A Trip™

Product information is as accurate as possible at the date of publication of this brochure. Features, floor plans, and specifications are subject to change without notice. Please also consult Keystone's web site at keystonerv.com for more current product information and specifications. Tow Vehicle Disclaimer. CAUTION: Owners of Keystone recreational vehicles are solely responsible for the selection and proper use of tow vehicles. All customers should consult with a motor vehicle manufacturer or their dealer concerning the purchase and use of suitable tow vehicles for Keystone products. Keystone disclaims any liability or damages suffered as a result of the selection, operation, use or misuse of a tow vehicle. KEYSTONE'S LIMITED WARRANTY DOES NOT COVER DAMAGE TO THE RECREATIONAL VEHICLE OR THE TOW VEHICLE AS A RESULT OF THE SELECTION, OPERATION, USE OR MISUSE OF THE TOW VEHICLE. 2/2013