

DIPLOMAT® | 2013  
Class A Diesel





DIPLOMAT® | 2013  
Class A Diesel





# LUXURY WITHOUT COMPROMISE

With the distinctive styling of a Monaco Coach, a powerful 405 hp engine and the best ride in the industry, the 2013 Diplomat offers the finest in residential living, but you control the view. There's no need to compromise with multiple furniture and floorplan options in lengths from 36 to 43 ft. You can have it all -- on your terms.



## KEY FEATURES

### RIDE AND DRIVE

- 405 horsepower, 1250 lbs/ft torque MaxxForce 10 engine.
- Custom built for Navistar RVs, Roadmaster chassis with 8 or 10 airbag suspension.
- Ergonomically designed cockpit for unmatched visibility, reach and leg room.

### INTERIOR

- 42" LCD living room TV, 32" LCD bedroom TV.
- Stainless steel appliances, residential refrigerator, 2-burner electric induction cooktop.
- 1 or 1-1/2 bath available floorplans with solid surface countertop, handcrafted tile backsplash.
- King bed standard with optional air mattress.
- Optional stackable washer and dryer.
- Quiet Cool™ 15 BTU roof air conditioners with heat pumps and Aquahot® 400 Hydronic heating system.

### EXTERIOR

- RV Sanicon tank drainage system, powered water hose reel, exterior tank level gauge, hot and cold exterior shower, holding tank rinsing system.
- Side swing aluminum storage doors, seamless rotocast pass through storage and slide out tray.
- Full body 4-color paint with clear coat and Diamond Shield mask.
- Roof-mounted Hadley air horns.
- 3-point locking position entry door with remote locking key fob.
- Optional Exterior entertainment center with 42" LCD TV.



# LUXURY WITHOUT COMPROMISE

With the distinctive styling of a Monaco Coach, a powerful 405 hp engine and the best ride in the industry, the 2013 Diplomat offers the finest in residential living, but you control the view. There's no need to compromise with multiple furniture and floorplan options in lengths from 36 to 43 ft. You can have it all -- on your terms.



## KEY FEATURES

### RIDE AND DRIVE

- 405 horsepower, 1250 lbs/ft torque MaxxFord 10 engine.
- Custom built for Navistar RVs, Roadmaster chassis with 8 or 10 airbag suspension.
- Ergonomically designed cockpit for unmatched visibility, reach and leg room.

### INTERIOR

- 42" LCD living room TV, 32" LCD bedroom TV.
- Stainless steel appliances, residential refrigerator, 2-burner electric induction cooktop.
- 1 or 1-1/2 bath available floorplans with solid surface countertop, handcrafted tile backsplash.
- King bed standard with optional air mattress.
- Optional stackable washer and dryer.
- Quiet Cool™ 15 BTU roof air conditioners with heat pumps and Aquahot® 400 Hydronic heating system.

### EXTERIOR

- RV Sanicon tank drainage system, powered water hose reel, exterior tank level gauge, hot and cold exterior shower, holding tank rinsing system.
- Side swing aluminum storage doors, seamless rotocast pass through storage and slide out tray.
- Full body 4-color paint with clear coat and Diamond Shield mask.
- Roof-mounted Hadley air horns.
- 3-point locking position entry door with remote locking key fob.
- Optional Exterior entertainment center with 42" LCD TV.





CENTRAL PARK



MANHATTAN BRONZE



GREYSTONE



CRYSTAL SUNSET



CENTRAL PARK



ITALIAN SIENNA



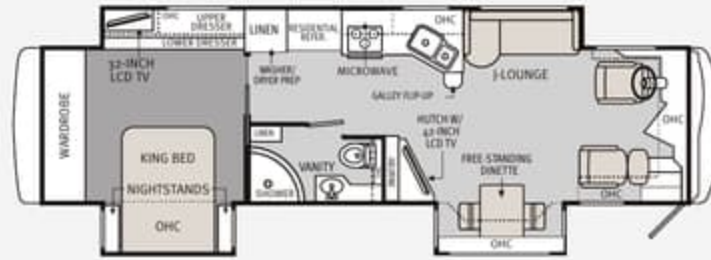
MANHATTAN BRONZE



ITALIAN SIENNA GLAZED

36PFT

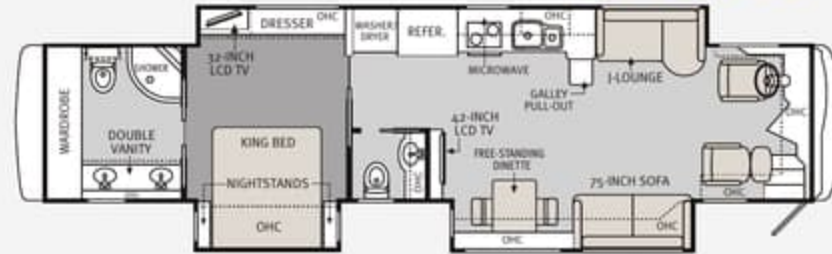
A B C F



- Full-Wall slide
- 42" Mid-Ship TV
- King Bed w/Optional Air Mattress

43DFT

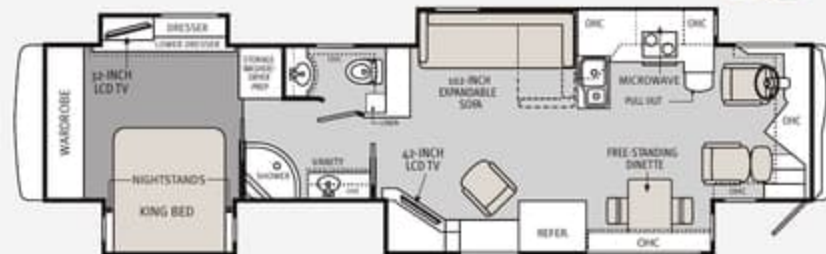
A E F G H



- Full-Wall slide
- 1-1/2 Baths
- 42" Mid-Ship TV
- King Bed w/Optional Air Mattress

43PKQ

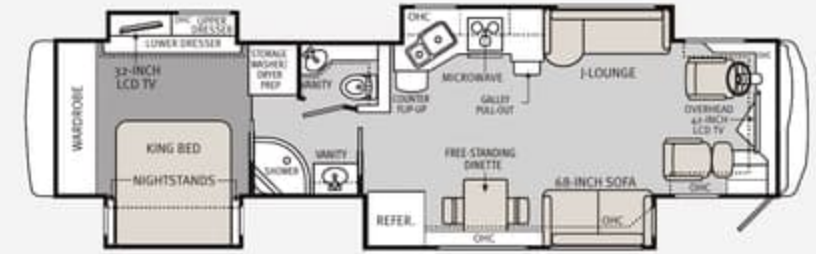
F I



- Quad slide
- Extendable Sofa
- 42" TV Above Fireplace in Curbside Slide Room
- Split Bath
- King Bed w/Optional Air Mattress

40PDQ

A D E F



- Quad slide
- Ultra-Leather Jack-Knife Sofa
- Split-Bath
- King Bed w/Optional Air Mattress

43PDQ

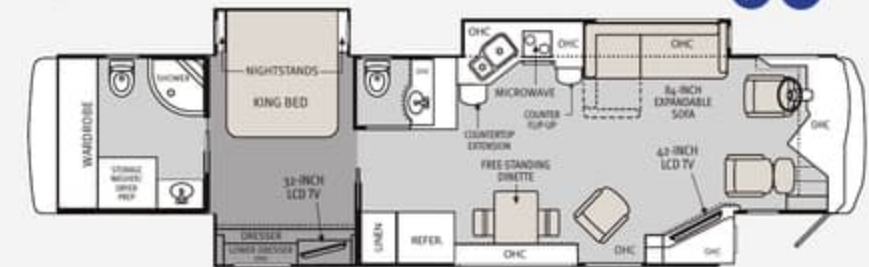
A D E F G



- Quad slide
- J-Lounge Sofa
- 42" TV in Front Overhead
- Split-Bath
- King Bed w/Optional Air Mattress

43RFT

F I



- Full-Wall slide
- Extendable Sofa
- 42" TV Above Fireplace in Curbside Slide Room
- 1-1/2 Baths
- King Bed w/Optional Air Mattress

FURNITURE OPTIONS

HIDE-A-BED SOFA (CURBSIDE)



A

SECTIONAL BOOTH DINETTE



B

U-SHAPED BOOTH DINETTE



C

EXTENDABLE SOFA (ROADSIDE)



D

BOOTH DINETTE ENSEMBLE



E



F

TWO EURO-RECLINERS WITHOUT TABLE



G

EXTENDABLE SOFA (CURBSIDE) W/ EXT. ENT. CTRL.



H

EXTENDABLE SOFA W/ HIDE-A-BED (ROADSIDE)



I

Due to continuous product improvements, please visit us online at [monacocoach.com](http://monacocoach.com) for the latest in standards, options, specifications and technical data.





CENTRAL PARK



MANHATTAN BRONZE



GREYSTONE



CRYSTAL SUNSET



CENTRAL PARK



MANHATTAN BRONZE



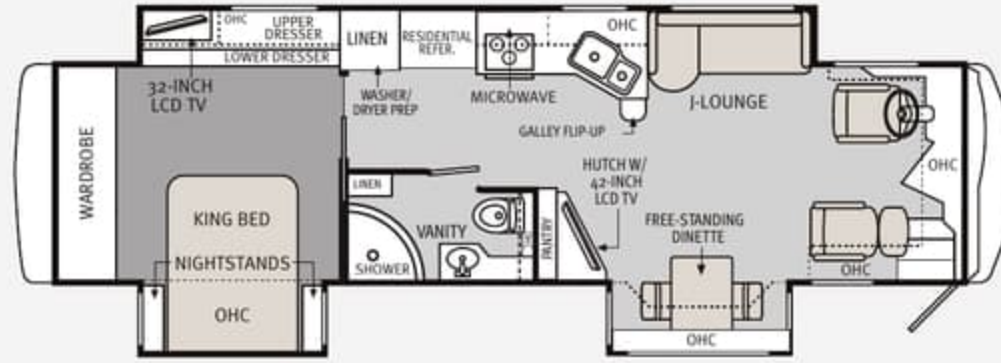
ITALIAN SIENNA



ITALIAN SIENNA GLAZED

36PFT

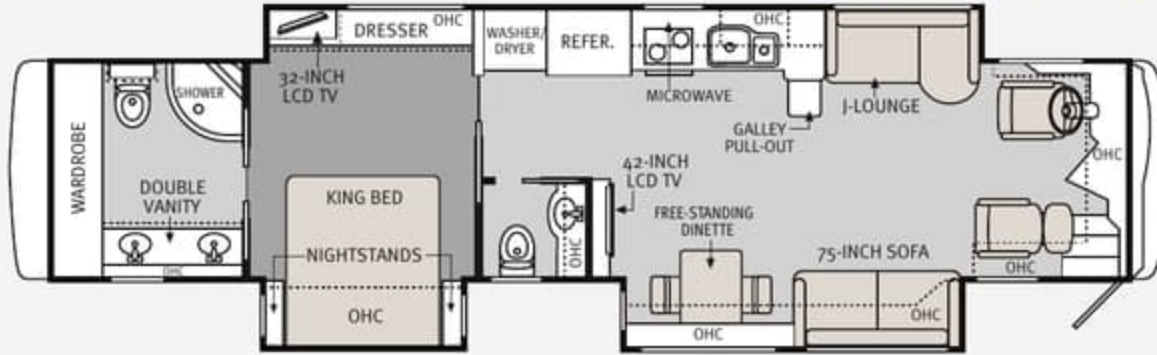
A B C F



- Full-Wall slide
- 42" Mid-Ship TV
- King Bed w/Optional Air Mattress

43DFT

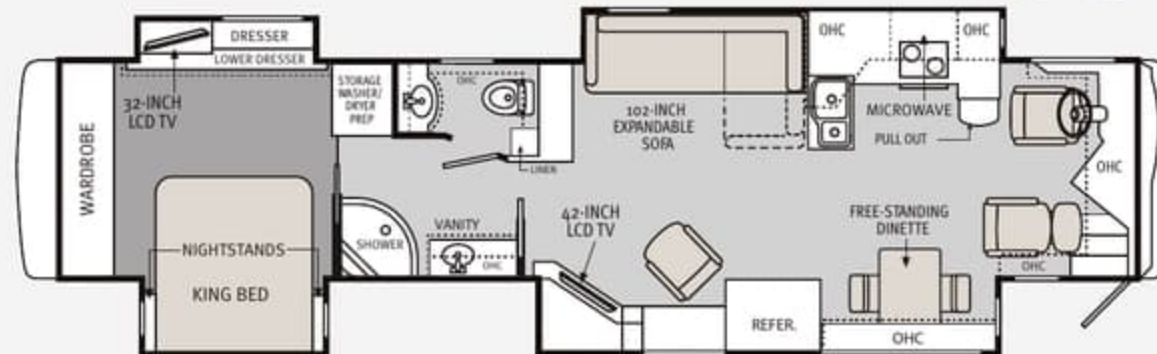
A E F G H



- Full-Wall slide
- 1-1/2 Baths
- 42" Mid-Ship TV
- King Bed w/Optional Air Mattress

43PKQ

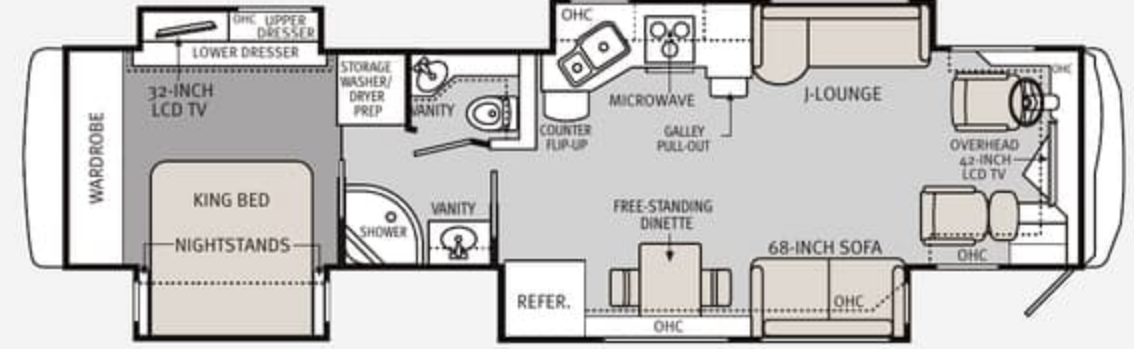
F I



- Quad slide
- Extendable Sofa
- 42" TV Above Fireplace in Curbside Slide Room
- Split Bath
- King Bed w/Optional Air Mattress

40PDQ

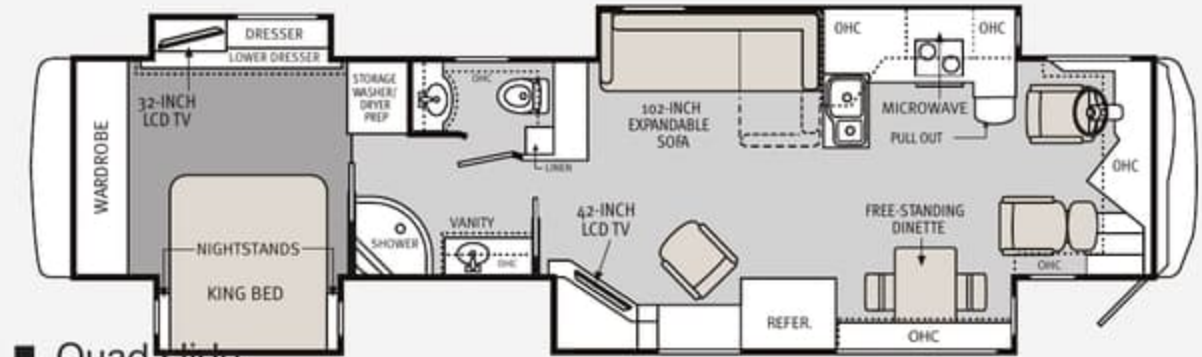
A D E F



- Quad slide
- Ultra-Leather Jack-Knife Sofa
- Split-Bath
- King Bed w/Optional Air Mattress

43PDQ

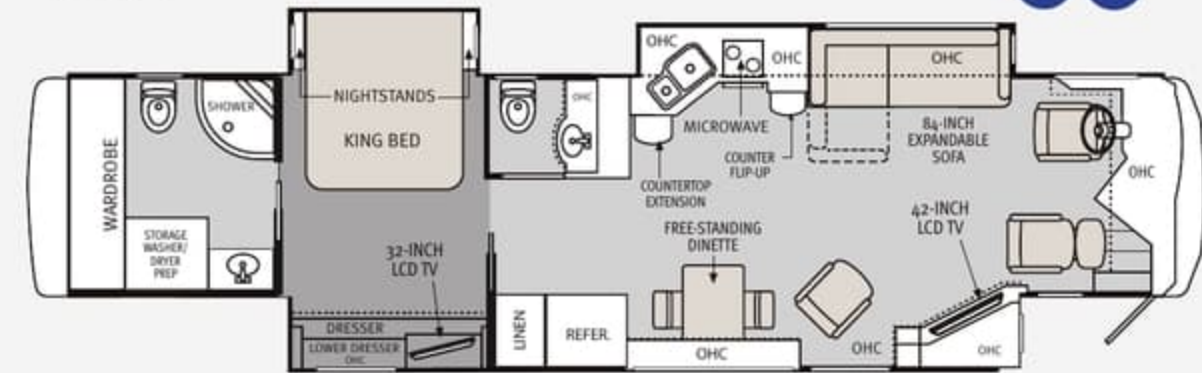
A D E F G



- Quad slide
- J-Lounge Sofa
- 42" TV in Front Overhead
- Split-Bath
- King Bed w/Optional Air Mattress

43RFT

F I



- Full-Wall slide
- Extendable Sofa
- 42" TV Above Fireplace in Curbside Slide Room
- 1-1/2 Baths
- King Bed w/Optional Air Mattress

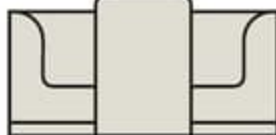
FURNITURE OPTIONS

HIDE-A-BED SOFA (CURBSIDE)



A

SECTIONAL BOOTH DINETTE



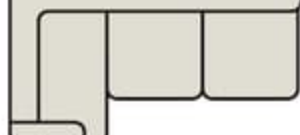
B

U-SHAPED BOOTH DINETTE



C

EXTENDABLE SOFA (ROADSIDE)



D

BOOTH DINETTE ENSEMBLE



E

QUEEN BED



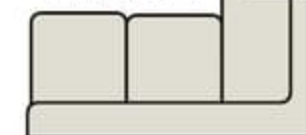
F

TWO EURO-RECLINERS WITHOUT TABLE



G

EXTENDABLE SOFA (CURBSIDE) W/ EXT. ENT. CTR.



H

EXTENDABLE SOFA W/ HIDE-A-BED (ROADSIDE)



I





### 9-LAYERED ROOF CONSTRUCTION (TOP TO BOTTOM)

- One-piece peaked fiberglass roof
- Luaun backing
- Thick, tapered bead foam insulation
- Aluminum double I-beam superstructure filled with fiberglass insulation
- Vapor barrier
- Structure foam: thermal insulation barrier
- 1/2" bead foam insulation
- Foam padding for extra insulation
- Padded vinyl ceiling



### LAYERED SIDEWALL CONSTRUCTION

- Wallpaper
- Decor Board
- Square tubular aluminum frame
- High performance insulation
- Gelcoat fiberglass composite sidewall



### FLOOR CONSTRUCTION (TOP TO BOTTOM)

- Structurwood®
- 1-1/2" aluminum tube
- High-performance thermal insulation foam
- Luaun
- 3-ply Backer

WEIGHTS*	36PFT	40PDQ	43DFT	43RFT	43PDQ	43PKQ
Gross Vehicle Weight Rating	36,000	36,000	43,000	43,000	43,000	43,000
Gross Combined Weight Rating	46,000	46,000	53,000	53,000	53,000	53,000
Front Gross Axle Weight Rating	13,000	13,000	13,000	13,000	13,000	13,000
Rear Gross Axle Weight Rating	23,000	23,000	20,000	20,000	20,000	20,000
Tag Axle Weight Rating (lbs.)	N/A	N/A	10,000	10,000	10,000	10,000
<b>MEASUREMENTS</b>						
Wheelbase	213"	261"	273"	273"	273"	273"
Overall Length	37' 4"	41' 5"	44' 3"	44' 3"	44' 3"	44' 3"
Overall Height	12' 7"	12'-7"	12' 7"	12' 7"	12' 7"	12' 7"
Interior Height	84"	84"	84"	84"	84"	84"
Interior Width	94.5"	94.5"	94.5"	94.5"	94.5"	94.5"
Exterior Width	100.5"	100.5"	100.5"	100.5"	100.5"	100.5"
<b>TANK CAPACITIES (GAL)**</b>						
Grey Tank [Amerikart]	62	62	62	62	62	62
Black Tank [Amerikart]	40	40	40	40	40	40
Fresh Tank [Amerikart]	100	100	100	100	100	100
Fuel Tank	100	100	100	100	100	100
LP Tank*** with optional gas cooktop only	39	39	39	39	39	39

\*Towing capacity is limited by GCWR; your vehicle's towing capacity is the difference between the GCWR and the actual vehicle weight, including all water, fuel, passengers and cargo. Your towed vehicle should be equipped with auxiliary brakes if the weight of the towed vehicle exceeds 1,000 lbs. Consult your owner's manual for further towing information.

\*\*All tank capacities are estimated based upon calculations provided by the tank manufacturers and represent approximate capacities. The actual "usable capacity" may be greater or less than the estimated capacities based upon fabrication and installation of the tanks.

\*\*\*Actual filled LP capacity is 80% of listing due to safety shut-off required on tank.

For more information on standards and options, please go to [www.monacocoach.com](http://www.monacocoach.com)  
 Monaco RV • 606 Nelson's Parkway, Wakarusa IN 46573 • 877 252 4666

## ROADMASTER™ CHASSIS

Built to deliver the very best diesel motorhome experience, Roadmaster construction utilizes advanced design and engineering, along with its eight outboard-mounted air bags and shock absorbers, to distribute stress evenly throughout the entire chassis, reducing the possibility of twisting and increasing durability and reliability. It's the ultimate foundation for a luxury ride.



## MAXXFORCE® ENGINE

The MaxxForce 10 design grew from a big idea: bring to the mid-range diesel market traditional big bore features like wet-sleeve design and in-chassis rebuild capability. This model, which brings increased 9.3-liter displacement by longer stroke, meets the requirements of more demanding applications.



The high-output MaxxForce 10 offers these features plus the performance you would expect from larger heavy-duty engines in a weight-saving medium-duty package.

## AROUND THE CLOCK SERVICE AND SUPPORT

When you take delivery of your new recreational vehicle, it's just the beginning of our exclusive around-the clock Owner Advantage Program™.

We offer an extensive support program that provides complete roadside assistance and special motor club benefits that follow you wherever your travels take you. We've teamed up with the most trusted RV emergency road service company in the country to give you immediate access to fast, dependable service when and where you need it.

Add our toll-free service appointment assistance, plus a technical assistance hotline, and you have the security of 24-hour, full-time support at your fingertips.

## WARRANTY INFORMATION

Enjoy your next RV adventure with the peace of mind that comes with a 12 month/24,000 mile basic limited warranty; a 5 year/50,000 mile limited warranty on aluminum or steel frame structure; and a 3 year/50,000 mile limited warranty on the Chassis. Review your coach's limited warranty in full for complete terms and conditions.

## SERVICE AND SUPPORT

24/7 service and support – Toll-free 877-211-8135.





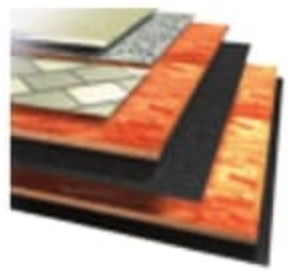
### 9-LAYERED ROOF CONSTRUCTION (TOP TO BOTTOM)

- One-piece peaked fiberglass roof
- Luaun backing
- Thick, tapered bead foam insulation
- Aluminum double I-beam superstructure filled with fiberglass insulation
- Vapor barrier
- Structure foam: thermal insulation barrier
- 1/2" bead foam insulation
- Foam padding for extra insulation
- Padded vinyl ceiling



### LAYERED SIDEWALL CONSTRUCTION

- Wallpaper
- Decor Board
- Square tubular aluminum frame
- High performance insulation
- Gelcoat fiberglass composite sidewall



### FLOOR CONSTRUCTION (TOP TO BOTTOM)

- Structurwood®
- 1-1/2" aluminum tube
- High-performance thermal insulation foam
- Luaun
- 3-ply Backer

WEIGHTS*	36PFT	40PDQ	43DFT	43RFT	43PDQ	43PKQ
Gross Vehicle Weight Rating	36,000	36,000	43,000	43,000	43,000	43,000
Gross Combined Weight Rating	46,000	46,000	53,000	53,000	53,000	53,000
Front Gross Axle Weight Rating	13,000	13,000	13,000	13,000	13,000	13,000
Rear Gross Axle Weight Rating	23,000	23,000	20,000	20,000	20,000	20,000
Tag Axle Weight Rating (lbs.)	N/A	N/A	10,000	10,000	10,000	10,000
MEASUREMENTS						
Wheelbase	213"	261"	273"	273"	273"	273"
Overall Length	37' 4"	41' 5"	44' 3"	44' 3"	44' 3"	44' 3"
Overall Height	12' 7"	12'-7"	12' 7"	12' 7"	12' 7"	12' 7"
Interior Height	84"	84"	84"	84"	84"	84"
Interior Width	94.5"	94.5"	94.5"	94.5"	94.5"	94.5"
Exterior Width	100.5"	100.5"	100.5"	100.5"	100.5"	100.5"
TANK CAPACITIES (GAL)**						
Grey Tank [Amerikart]	62	62	62	62	62	62
Black Tank [Amerikart]	40	40	40	40	40	40
Fresh Tank [Amerikart]	100	100	100	100	100	100
Fuel Tank	100	100	100	100	100	100
LP Tank*** with optional gas cooktop only	39	39	39	39	39	39

\*Towing capacity is limited by GCWR; your vehicle's towing capacity is the difference between the GCWR and the actual vehicle weight, including all water, fuel, passengers and cargo. Your towed vehicle should be equipped with auxiliary brakes if the weight of the towed vehicle exceeds 1,000 lbs. Consult your owner's manual for further towing information.

\*\*All tank capacities are estimated based upon calculations provided by the tank manufacturers and represent approximate capacities. The actual "usable capacity" may be greater or less than the estimated capacities based upon fabrication and installation of the tanks.

\*\*\*Actual filled LP capacity is 80% of listing due to safety shut-off required on tank.

For more information on standards and options, please go to [www.monacocoach.com](http://www.monacocoach.com)  
 Monaco RV • 606 Nelson's Parkway, Wakarusa IN 46573 • 877 252 4666

## ROADMASTER™ CHASSIS

Built to deliver the very best diesel motorhome experience, Roadmaster construction utilizes advanced design and engineering, along with its eight outboard-mounted air bags and shock absorbers, to distribute stress evenly throughout the entire chassis, reducing the possibility of twisting and increasing durability and reliability. It's the ultimate foundation for a luxury ride.



## MAXXFORCE® ENGINE

The MaxxForce 10 design grew from a big idea: bring to the mid-range diesel market traditional big bore features like wet-sleeve design and in-chassis rebuild capability. This model, which brings increased 9.3-liter displacement by longer stroke, meets the requirements of more demanding applications.



The high-output MaxxForce 10 offers these features plus the performance you would expect from larger heavy-duty engines in a weight-saving medium-duty package.

## AROUND THE CLOCK SERVICE AND SUPPORT

When you take delivery of your new recreational vehicle, it's just the beginning of our exclusive around-the clock Owner Advantage Program™.

We offer an extensive support program that provides complete roadside assistance and special motor club benefits that follow you wherever your travels take you. We've teamed up with the most trusted RV emergency road service company in the country to give you immediate access to fast, dependable service when and where you need it.

Add our toll-free service appointment assistance, plus a technical assistance hotline, and you have the security of 24-hour, full-time support at your fingertips.

## WARRANTY INFORMATION

Enjoy your next RV adventure with the peace of mind that comes with a 12 month/24,000 mile basic limited warranty; a 5 year/50,000 mile limited warranty on aluminum or steel frame structure; and a 3 year/50,000 mile limited warranty on the Chassis. Review your coach's limited warranty in full for complete terms and conditions.

## SERVICE AND SUPPORT

24/7 service and support – Toll-free 877-211-8135.