

MONARCH® | 2013  
Class A Gas



NAVISTAR



MONARCH® | 2013  
Class A Gas



NAVISTAR®





WHERE LUXURY MEETS AFFORDABILITY







WHERE LUXURY MEETS AFFORDABILITY





## KEY FEATURES

### RIDE AND DRIVE

- 362 horsepower, 457 lbs/ft torque Ford Triton V10 engine.
- Smart-Structure II truss system for added chassis strength and durability with automatic hydraulic leveling system.
- Ergonomically designed cockpit for unmatched visibility, reach and leg room.

### INTERIOR

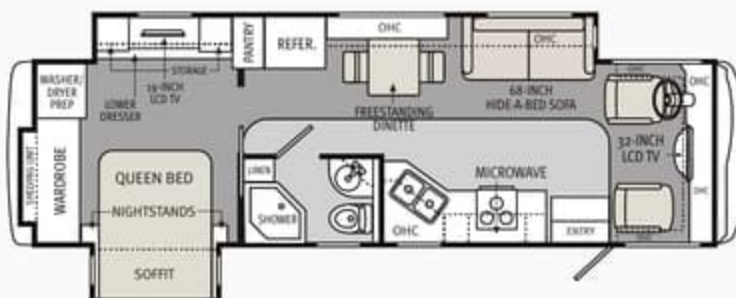
- LCD TVs in living room and bedroom, optional DVD player.
- Full width front solar/night power shade with pull-down solar/night side shades.
- Hardwood cabinet doors, solid surface countertops, 3-burner cooktop, large double door refrigerator, 30" space saver convection microwave.
- Full bath with residential style glass-enclosed shower.
- Queen bed with hardwood headboard and spacious wardrobe. Optional king bed in select floorplan.
- Optional stackable washer and dryer in select floor plan.
- Dual 13.5M BTU air conditioners with optional dual 15M BTU with heat pumps.

### EXTERIOR

- Service/ utility compartment with hot and cold exterior shower. 4-way fresh water valve.
- Side swing aluminum storage doors with seamless rotocast pass through storage.
- Fiberglass front and rear caps. Chrome exterior mirrors with integrated side cameras.
- Dual pane dark tinted windows. Awnings in metal wrap covers.
- Optional exterior entertainment center.

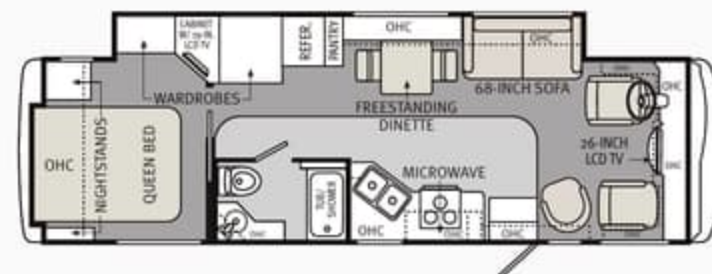
Like all Monaco luxury coaches, the 2013 Monarch's exterior features 4-color paint, bold graphics and signature chevron front cap accents. The Smart Structure™ chassis design provides an unmatched ride and stability for this class. With multiple furniture and floorplan options, from 33 to 36 ft., you can have it all.

33SFD



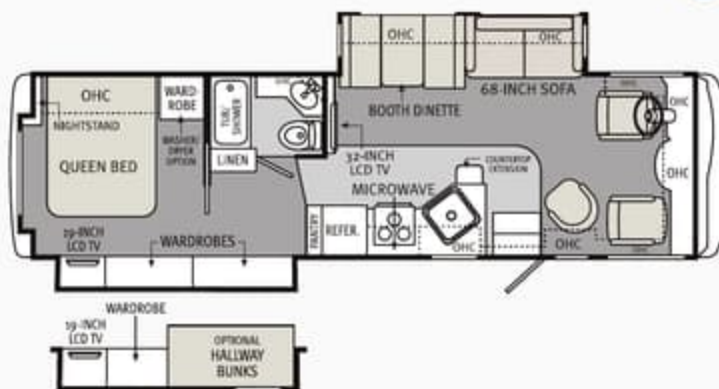
- Full wall slide
- Optional stackable washer/dryer
- Residential refrigeration option
- Hardwood valances, headboard & fascia

33SFS



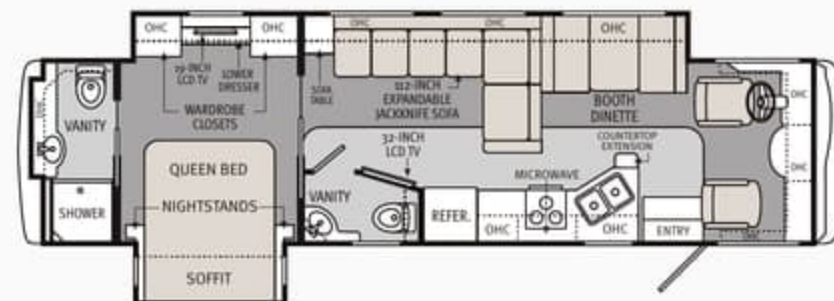
- Full wall slide
- Free standing dinette
- Hardwood valances, headboard & fascia

34SBD



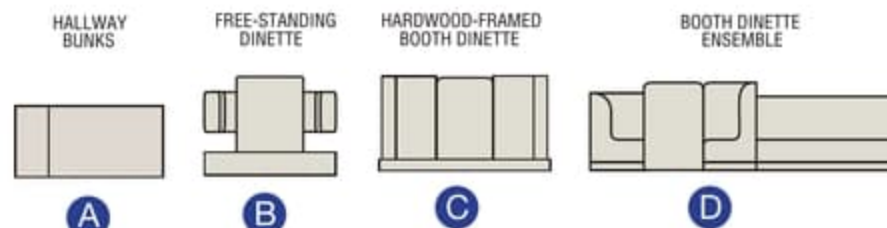
- Hallway bunks option
- Optional washer/dryer
- Mid ship TV
- Hardwood valances, headboard & fascia

36SFD



- Full wall slide
- 1-1/2 baths
- Mid ship TV
- Hardwood valances, headboard & fascia

### FURNITURE OPTIONS



Due to continuous product improvements, please visit us online at [monacocoach.com](http://monacocoach.com) for the latest in standards, options, specifications and technical data.



## KEY FEATURES

### RIDE AND DRIVE

- 362 horsepower, 457 lbs/ft torque Ford Triton V10 engine.
- Smart-Structure II truss system for added chassis strength and durability with automatic hydraulic leveling system.
- Ergonomically designed cockpit for unmatched visibility, reach and leg room.

### INTERIOR

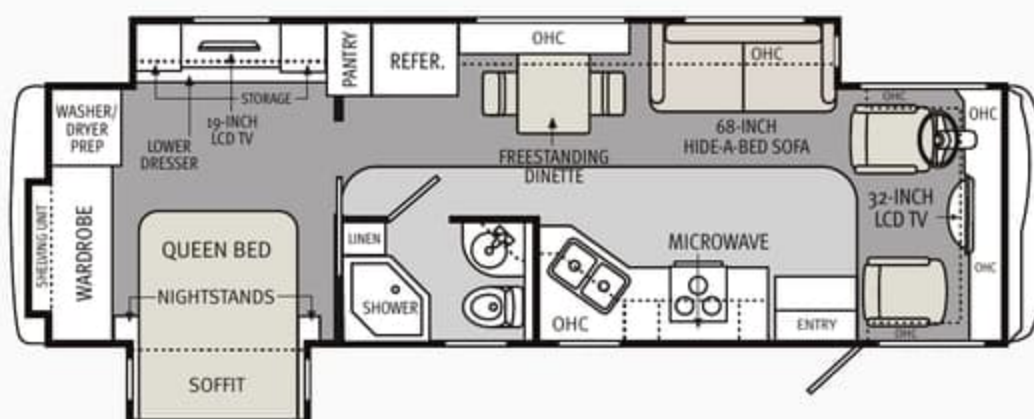
- LCD TVs in living room and bedroom, optional DVD player.
- Full width front solar/night power shade with pull-down solar/night side shades.
- Hardwood cabinet doors, solid surface countertops, 3-burner cooktop, large double door refrigerator, 30" space saver convection microwave.
- Full bath with residential style glass-enclosed shower.
- Queen bed with hardwood headboard and spacious wardrobe. Optional king bed in select floorplan.
- Optional stackable washer and dryer in select floor plan.
- Dual 13.5M BTU air conditioners with optional dual 15M BTU with heat pumps.

### EXTERIOR

- Service/ utility compartment with hot and cold exterior shower. 4-way fresh water valve.
- Side swing aluminum storage doors with seamless rotocast pass through storage.
- Fiberglass front and rear caps. Chrome exterior mirrors with integrated side cameras.
- Dual pane dark tinted windows. Awnings in metal wrap covers.
- Optional exterior entertainment center.

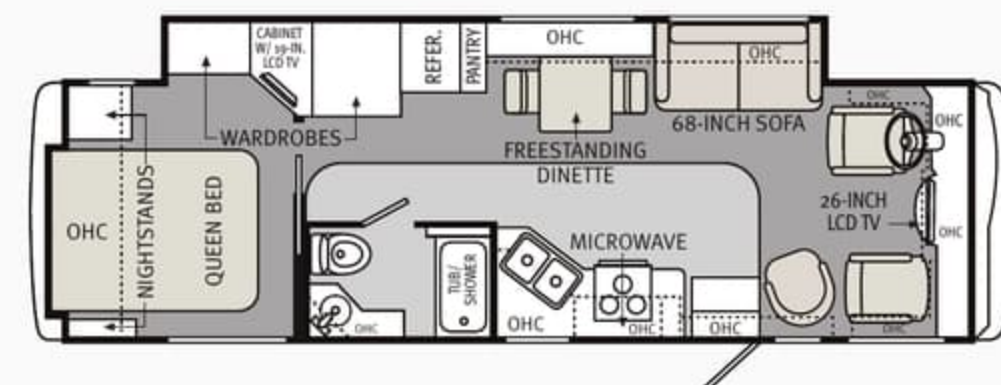
Like all Monaco luxury coaches, the 2013 Monarch's exterior features 4-color paint, bold graphics and signature chevron front cap accents. The Smart Structure™ chassis design provides an unmatched ride and stability for this class. With multiple furniture and floorplan options, from 33 to 36 ft., you can have it all.

33SFD



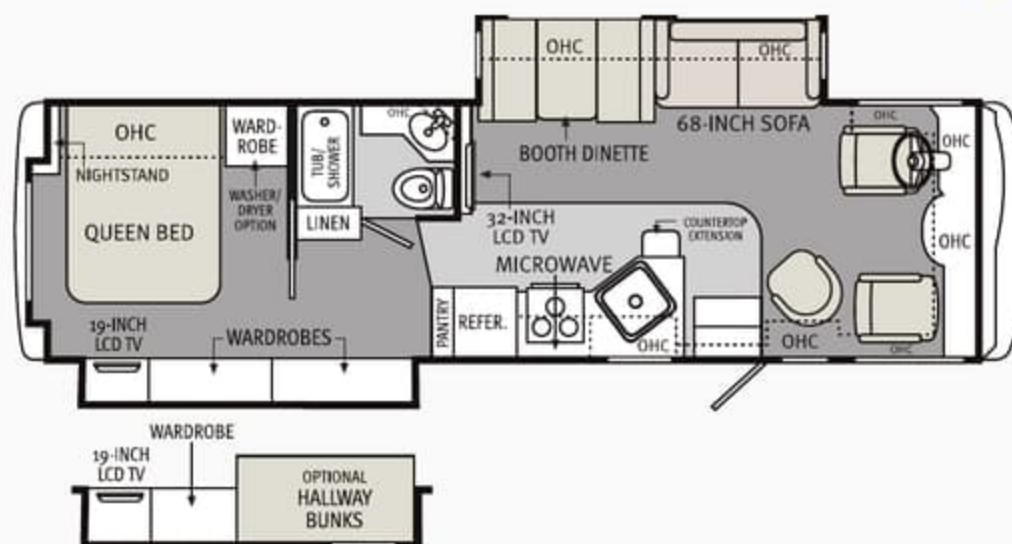
- Full wall slide
- Optional stackable washer/dryer
- Residential refrigeration option
- Hardwood valances, headboard & fascia

33SFS



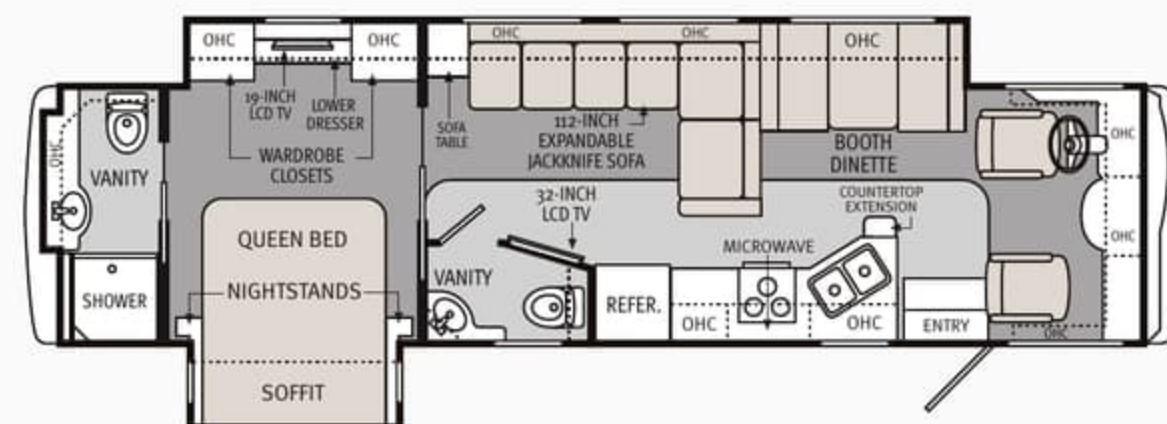
- Full wall slide
- Free standing dinette
- Hardwood valances, headboard & fascia

34SBD



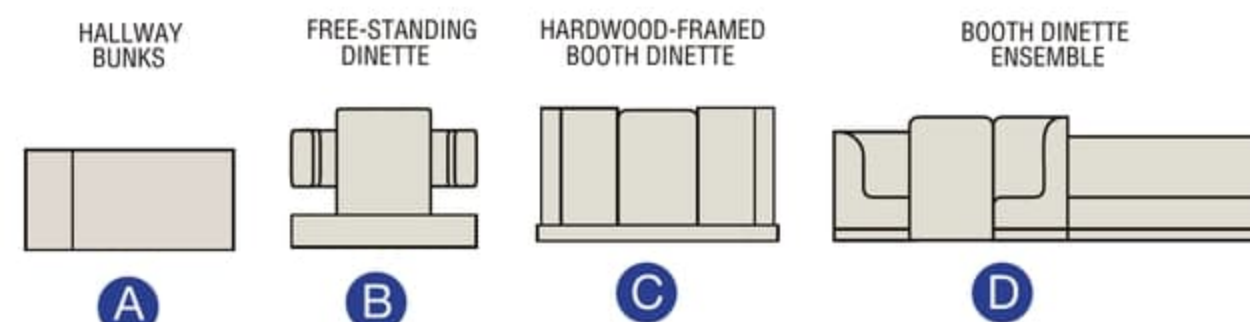
- Hallway bunks option
- Optional washer/dryer
- Mid ship TV
- Hardwood valances, headboard & fascia

36SFD



- Full wall slide
- 1-1/2 baths
- Mid ship TV
- Hardwood valances, headboard & fascia

### FURNITURE OPTIONS



Due to continuous product improvements, please visit us online at [monacocoach.com](http://monacocoach.com) for the latest in standards, options, specifications and technical data.





ROCKEFELLER



ROYAL SIENNA



ROCKEFELLER



ROYAL SIENNA



HILLSIDE  
CHERRY



FULTON CHERRY  
GLAZED

Weights - Ford 22,000lb Chassis (LBS)*	33SFS	33SFD	34SBD	36SFD
Gross Vehicle Weight Rating	22,000	22,000	22,000	22,000
Gross Combined Weight Rating	26,000	26,000	26,000	26,000
Front Gross Axle Weight Rating	8,000	8,000	8,000	8,000
Rear Gross Axle Weight Rating	15,000	15,000	15,000	15,000
<b>MEASUREMENTS</b>				
Wheelbase	228"	208"	228"	242"
Overall Length	34'-3"	34'-8"	35'-2"	37' - 2"
Overall Height, Including A/C	12' - 9"	12' - 9"	12' - 9"	12' - 9"
Interior Height	84"	84"	84"	84"
Interior Width	96"	96"	96"	96"
Exterior Width	100.5"	100.5"	100.5"	100.5"
<b>TANK CAPACITIES (GAL)**</b>				
Water Heater	10	10	10	10
Grey Tank	54	40	55	40
Black Tank	45	40	42	40
Fresh Tank	80	80	80	80
Fuel - Ford	80	80	80	80
LP Tank*** (lbs. / gal.) {Tank size 20.2 gal usable 16 gal}	68 / 16	68 / 16	68 / 16	68 / 16

\*Towing capacity is limited by GCWR; your vehicle's towing capacity is the difference between the GCWR and the actual vehicle weight, including all water, fuel, passengers and cargo. Your towed vehicle should be equipped with auxiliary brakes if the weight of the towed vehicle exceeds 1,000 lbs. Consult your owner's manual for further towing information.

\*\*All tank capacities are estimated based upon calculations provided by the tank manufacturers and represent approximate capacities. The actual "usable capacity" may be greater or less than the estimated capacities based upon fabrication and installation of the tanks.

\*\*\*Actual filled LP capacity is 80% of listing due to safety shut-off required on tank.

For more information on standards and options, please go to [www.monacocoach.com](http://www.monacocoach.com)  
606 Nelson's Parkway, Wakarusa IN 46573 • 877 252 4666

## MORE TO STORE

Monarch features a large, pass-through storage bay with side-hinged baggage doors.



## AROUND THE CLOCK SERVICE AND SUPPORT

When you take delivery of your new recreational vehicle, it's just the beginning of our exclusive around-the clock Owner Advantage Program™.

We offer an extensive support program that provides complete roadside assistance and special motor club benefits that follow you wherever your travels take you. We've teamed up with the most trusted RV emergency road service company in the country to give you immediate access to fast, dependable service when and where you need it.

Add our toll-free service appointment assistance, plus a technical assistance hotline, and you have the security of 24-hour, full-time support at your fingertips.

## WARRANTY INFORMATION

Enjoy your next RV adventure with the peace of mind that comes with a 12 month/24,000 mile basic limited warranty; a 5 year/50,000 mile limited warranty on aluminum or steel frame structure; and a 3 year/50,000 mile limited warranty on the Chassis. Review your coach's limited warranty in full for complete terms and conditions.

## SERVICE AND SUPPORT

24/7 service and support – Toll-free 877-211-8135





ROCKEFELLER



ROYAL SIENNA



ROCKEFELLER



ROYAL SIENNA



HILLSIDE  
CHERRY



FULTON CHERRY  
GLAZED

Weights - Ford 22,000lb Chassis (LBS)*	33SFS	33SFD	34SBD	36SFD
Gross Vehicle Weight Rating	22,000	22,000	22,000	22,000
Gross Combined Weight Rating	26,000	26,000	26,000	26,000
Front Gross Axle Weight Rating	8,000	8,000	8,000	8,000
Rear Gross Axle Weight Rating	15,000	15,000	15,000	15,000
<b>MEASUREMENTS</b>				
Wheelbase	228"	208"	228"	242"
Overall Length	34'-3"	34'-8"	35'-2"	37' - 2"
Overall Height, Including A/C	12' - 9"	12' - 9"	12' - 9"	12' - 9"
Interior Height	84"	84"	84"	84"
Interior Width	96"	96"	96"	96"
Exterior Width	100.5"	100.5"	100.5"	100.5"
<b>TANK CAPACITIES (GAL)**</b>				
Water Heater	10	10	10	10
Grey Tank	54	40	55	40
Black Tank	45	40	42	40
Fresh Tank	80	80	80	80
Fuel - Ford	80	80	80	80
LP Tank*** (lbs. / gal.) {Tank size 20.2 gal usable 16 gal}	68 / 16	68 / 16	68 / 16	68 / 16

\*Towing capacity is limited by GCWR; your vehicle's towing capacity is the difference between the GCWR and the actual vehicle weight, including all water, fuel, passengers and cargo. Your towed vehicle should be equipped with auxiliary brakes if the weight of the towed vehicle exceeds 1,000 lbs. Consult your owner's manual for further towing information.

\*\*All tank capacities are estimated based upon calculations provided by the tank manufacturers and represent approximate capacities. The actual "usable capacity" may be greater or less than the estimated capacities based upon fabrication and installation of the tanks.

\*\*\*Actual filled LP capacity is 80% of listing due to safety shut-off required on tank.

For more information on standards and options, please go to [www.monacocoach.com](http://www.monacocoach.com)  
606 Nelson's Parkway, Wakarusa IN 46573 • 877 252 4666

## MORE TO STORE

Monarch features a large, pass-through storage bay with side-hinged baggage doors.



## AROUND THE CLOCK SERVICE AND SUPPORT

When you take delivery of your new recreational vehicle, it's just the beginning of our exclusive around-the clock Owner Advantage Program™.

We offer an extensive support program that provides complete roadside assistance and special motor club benefits that follow you wherever your travels take you. We've teamed up with the most trusted RV emergency road service company in the country to give you immediate access to fast, dependable service when and where you need it.

Add our toll-free service appointment assistance, plus a technical assistance hotline, and you have the security of 24-hour, full-time support at your fingertips.

## WARRANTY INFORMATION

Enjoy your next RV adventure with the peace of mind that comes with a 12 month/24,000 mile basic limited warranty; a 5 year/50,000 mile limited warranty on aluminum or steel frame structure; and a 3 year/50,000 mile limited warranty on the Chassis. Review your coach's limited warranty in full for complete terms and conditions.

## SERVICE AND SUPPORT

24/7 service and support – Toll-free 877-211-8135