

allegro breeze



TIFFIN MOTORHOMES
WHEREVER YOU GO, WE GO



COVER

2013 ALLEGRO BREEZE WITH ROCKY MOUNTAIN BROWN EXTERIOR

LIVING AREA

32 BR FLOOR PLAN/BAHAMAS FABRIC SUITE WITH MEDIUM ALDERWOOD CABINETS



COCKPIT



U-SHAPED DINETTE



KITCHEN



DELIGHTFULLY WALLET-FRIENDLY. CONVENIENTLY TRAVEL-SIZED. SUPERBLY ENGINEERED. Tiffin's 2013 Allegro Breeze, the smallest luxury Class A motor home on the road today. Built to the same exacting standards as our other models, the Breeze is a masterpiece of spatial engineering, maximizing every square inch to make life on the go as comfortable as possible. Not a single design detail has been overlooked, from the smartly equipped kitchen with double bowl sink to the dinette that converts to a bed for extra sleeping space. Ceiling-mounted overhead cabinets, a built-in pantry, and basement storage give plenty of room to bring everything you need. The Breeze is also a pleasure to drive, with nimble maneuverability and unsurpassed fuel efficiency. Available in 28' and 32', this compact model is Tiffin's impressive proof less can be more.



CLOSET/CHEST OF DRAWERS



MASTER BEDROOM



BATHROOM SINK

EXTERIOR DÉCOR

FULL-BODY PAINT SCHEMES



GOLD CORAL



SILVER SAND



MAROON CORAL



SUNLIT SAND



ROCKY MOUNTAIN BROWN

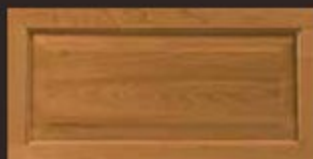
INTERIOR DÉCOR

Tiffin Motorhomes sets the standard for interior luxury in the RV industry, providing you with a beautiful backdrop to personalize to your taste. For the 2013 Allegro Breeze, choose from three fabric suites—Bahamas, Dazzle and Stonehenge. All are designed to complement the hardwood cabinetry crafted in our Red Bay mill shop. Finishes are available in two traditional colors (Medium Alderwood and English Chestnut) or a lighter tone (Ivory Cream) for a more modern look.

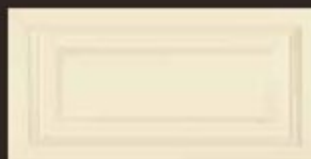
CABINETS



MEDIUM ALDERWOOD



ENGLISH CHESTNUT



IVORY CREAM

BAHAMAS FABRIC SUITE

LIVING AREA



DINETTE



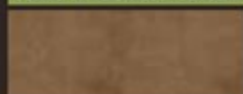
ACCENT



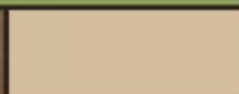
TILE

COUNTERTOPS

SOFA & DRIVER/PASSENGER SEAT



STANDARD LEATHER



OPTIONAL LEATHER

BEDROOM



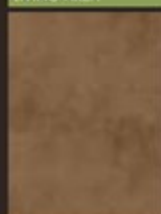
MAIN



ACCENT

DAZZLE FABRIC SUITE

LIVING AREA



DINETTE



ACCENT



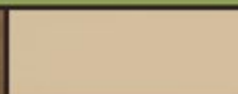
TILE

COUNTERTOPS

SOFA & DRIVER/PASSENGER SEAT



STANDARD LEATHER



OPTIONAL LEATHER

BEDROOM



MAIN



ACCENT

FLOORING



CARPET

STONEHENGE FABRIC SUITE

LIVING AREA



DINETTE



ACCENT



TILE

COUNTERTOPS

SOFA & DRIVER/PASSENGER SEAT



STANDARD LEATHER



OPTIONAL LEATHER

BEDROOM



MAIN



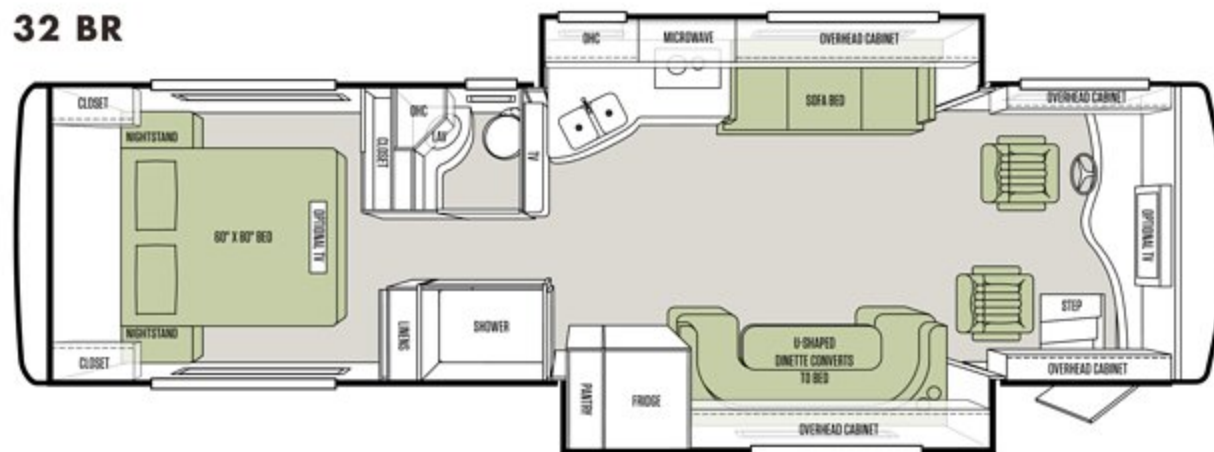
ACCENT

Allegro Breeze cabinet doors & fascias are made of solid wood, & all cabinet finishes are available in combination with any fabric suite. All options may not be available in every model. Because of progressive improvements, specifications, standard & optional equipment are subject to change without notice or obligation. For a complete & up-to-date list of available options & specifications, visit tiffinmotorhomes.com

28 BR



32 BR



SPECIFICATIONS

GENERAL EXTERIOR

STANDARD ON ALL MODELS:

<ul style="list-style-type: none"> * Fiberglass Front & Rear Caps * Tinted One-piece Windshield * 6.0 kw Onan® Generator * Horizontal Mounted Wipers * Heated Power Mirrors * Gel-coat Fiberglass Walls * Exterior Patio Light * Power Patio Awning * Slide-out Awning(s) * Entry Door Awning * Aluminum Wheels 	<ul style="list-style-type: none"> * Quiet AC Roof-ducted System * Electric Step * Single Pane Windows * Convenient Storage Doors with Gas Shocks * Ridged Long-life Storage Boxes * Single Handle Lockable Storage Door Latches * Heated Water & Holding Tank Compartments * Two 6 V Auxiliary Batteries * Park Telephone Ready * Digital/Analog TV Antenna * Cable Ready TV 	<ul style="list-style-type: none"> * 50 Amp Service * Black Holding Tank Flush System * Exterior Rinse Hose/Shower * Back-up Camera * 110 V Exterior Receptacle * 110 V/12 V Converter * Inverter for TV & Entertainment Center Only * Undercoating * Roof Ladder * External Tripod Satellite Hook-up * Exterior Storage Compartment Lights 	<ul style="list-style-type: none"> * Paint Protective Film * Seamless, One-piece Fiberglass Composite Slide-out Box Construction * Side-view Cameras Activated by Turn Signals * Full-body Paint * Level Air System * Low Profile Roof AC – Front * Low Profile Roof AC – Rear
--	--	--	---

AVAILABLE OPTIONS:

	28 BR	32 BR
Automatic Satellite Dish*	<input type="radio"/>	<input type="radio"/>
Low Profile Roof AC with Heat Pump (in Place of Front AC)	<input type="radio"/>	<input type="radio"/>

AUTOMOTIVE

STANDARD ON ALL MODELS:

* Allison 6-speed Automatic with Lock-up	* Air Ride Suspension	* Full Air Brakes	* Exhaust Brake
--	-----------------------	-------------------	-----------------

CHASSIS

POWERGLIDE REAR ENGINE DIESEL CHASSIS:

	28 BR	32 BR
Engine	Navistar MaxxForce® 7	Navistar MaxxForce® 7
Peak HP	240 HP @ 2,600 RPM	240 HP @ 2,600 RPM
Peak Torque (lb. – Ft. Max Net)	620 @ 1,400	620 @ 1,400
GAWR – Front	8,500 lb.	8,500 lb.
GAWR – Rear	13,500 lb.	15,000 lb.
GVWR	22,000 lb.	23,500 lb.
GCWR	26,000 lb.	28,000 lb.
Wheel Base	152"	202"
Tire Size	265/70R19.5	265/70R19.5
Fuel Tank (Gallons)	65	65
Alternator Amps	170	170
Trailer Hitch Capacity	4,000 lb.	4,500 lb.

WEIGHTS & MEASURES

OVERALL:

	28 BR	32 BR
Overall Length (Approximate)	29' 7"	33' 2"
Overall Height with Roof Air (Maximum)	11' 2"	11' 2"
Interior Height	78"	78"
Overall Width	95"	95"
Interior Width	91"	91"
Fresh Water (Gallons)	70	70
Black Water (Gallons)	30	30
Grey Water (Gallons)	50	50
LPG Tank (Gallons; can only be filled to 80% capacity)	20	20
Basement Storage (Cubic Feet – Approximate)	45	83
Minimum Garage Height	12'	12'

*High-definition programming is not available on a domed satellite antenna unless you subscribe to DISH Network®.



SOFA/SLEEPER



LIVING AREA/COCKPIT



KITCHEN SINK



STOVE & COVER



SHOWER WITH SKYLIGHT

GENERAL INTERIOR

STANDARD ON ALL MODELS:

- High Gloss Raised Panel Hardwood Cabinet Doors
- Vinyl Headliner
- Scotchgard® Treated Carpet & Fabrics

- Wall-to-wall Vinyl Tile Flooring Throughout Entire Coach
- Ball Bearing Drawer Slides
- Solar/Privacy Shades in Living Room

- LED Bulbs in Ceiling Lights Only
- Tank Level Monitor System
- Smoke Detector

- 6-gallon DSI Gas/Electric Water Heater
- Step Well Cover

AVAILABLE OPTIONS:

- Vacuum Cleaner System
- Ivory Cream Solid Cabinet Doors & Drawer Fronts
- English Chestnut Solid Cabinet Doors & Drawer Fronts
- Medium Alderwood Solid Cabinet Doors & Drawer Fronts
- Ducted Furnace

28 BR

- ☐
- ☐
- ☐
- ☐
- One

32 BR

- ☐
- ☐
- ☐
- ☐
- Two

COCKPIT

STANDARD ON ALL MODELS:

- Non-power Cloth Driver & Passenger Seats (Flexsteel™)
- Lighted Instrument Panel
- Contemporary-styled Dash
- Single CD Player & AM/FM Stereo
- Satellite-ready Radio (includes USB ports for iPad & iPhone)
- Dual 12 V Dash Receptacles

- Back-up Monitor
- Dash Gauges with Diagnostic System
- Dual Dash Fans
- Auxiliary Start
- Adjustable Gas & Brake Pedals

- Snack Tray with Two Cupholders
- Power Solar/Privacy Windshield Shades
- Manual Solar/Privacy Shades on Side Windows
- Fire Extinguisher
- Drawer in Dash

AVAILABLE OPTIONS:

- Power Cloth Driver & Passenger Seats
- Power Leather Driver & Passenger Seats
- Front Overhead TV

28 BR

- ☐
- ☐
- ☐

32 BR

- ☐
- ☐
- ☐

KITCHEN

STANDARD ON ALL MODELS:

- * Solid Surface Countertops
- * Solid Surface Backsplashes & Splash Guard
- * Solid Wood Refrigerator Panels
- * Double Bowl Stainless Steel Sink
- * 2-burner Cooktop with Folding Glass Cover
- * Convection Microwave with Exterior Venting
- * 8 Cubic Foot Refrigerator

AVAILABLE OPTIONS:	28 BR	32 BR
Icemaker in Freezer	<input type="radio"/>	<input type="radio"/>

BATH

STANDARD ON ALL MODELS:

- * Medicine Cabinet
- * Skylight in Shower
- * Satin Nickel Vanity Faucet
- * Molded Fiberglass One-piece Shower
- * Solid Surface Vanity Top
- * Fantastic® Fan
- * Carbon Monoxide & Propane Gas Detectors

BEDROOM

STANDARD ON ALL MODELS:

- * Dual Wardrobes
- * Bed Comforter with Throw Pillows
- * Memory Foam Queen Mattress
- * Four Large Drawers in Bed Pedestal
- * Solar/Privacy Shades

AVAILABLE OPTIONS:	28 BR	32 BR
Bedroom TV	<input type="radio"/>	<input type="radio"/>

LIVING AREA/DINETTE

STANDARD ON ALL MODELS:

- * U-shaped Dinette Converts to Bed
- * Midsection TV
- * Inverter for Televisions & Optional Surround Sound
- * Cloth DE Sofa/Sleeper on Driver Side

AVAILABLE OPTIONS:	28 BR	32 BR
Halo Leather DE Sofa/Sleeper on Driver Side	<input type="radio"/>	<input type="radio"/>
Home Theater Surround Sound System	<input type="radio"/>	<input type="radio"/>



tiffinmotorhomes.com



No information contained herein is intended as an offer to sell. Product specifications, standard equipment & the specific options available are subject to change without further notice. Those interested in specific products should contact their Tiffin dealer to determine actual specifications, product availability, the options available, product pricing & to obtain additional product information. For more information, visit tiffinmotorhomes.com or scan the QR Code with your Smart Phone.



WHY BUY A TIFFIN MOTORHOME?

No one invests more time and effort into the construction and engineering of motor homes than we do at Tiffin. To ensure superior quality, we design and make many parts ourselves, such as our roof cap, one piece of moisture-resistant molded fiberglass that prevents water intrusion and seamlessly seals a 5½" layer of formed insulation. Outside wall panels are gel-coated fiberglass over high performance thermal insulation. Underfoot, the vinyl tile floor is bonded to high-impact oriented strand board, which is secured atop thermal insulation and a woven moisture barrier material. Underneath it all, every model is built on an innerframe of durable, tubular aluminum. As a new coach comes off the line, we think the result speaks for itself: There isn't a more comfortable, better-built motor home on the road today.

10-YEAR LIMITED FRAME WARRANTY

We warranty the frame of the walls, floors, and roof for 10 years.

5-YEAR LIMITED SIDEWALL BOND WARRANTY

We warranty the sidewall against delamination between the outside fiberglass and the innerframe for 5 years.

GO TO TIFFINMOTORHOMES.COM

Visit us on the web for more information on the 2013 Allegro Breeze and all 2013 Tiffin Motorhomes, along with the latest product and specification updates. Plus, watch videos and see other exclusive web content. You can also join us on Facebook and Twitter.

FOR PARTS & SERVICE CALL 256/356.0261

 [FACEBOOK.COM/TIFFINMOTORHOMES](https://www.facebook.com/tiffinmotorhomes)  [TWITTER.COM/TIFFINMOTORHOME](https://twitter.com/tiffinmotorhome)

YOUR LOCAL TIFFIN DEALER:

SOME INTERIOR FURNISHINGS NOT INCLUDED, UNLESS WHERE NOTED. ALL CONTENT ©2013 TIFFIN MOTORHOMES, INC. ALLEGRO®, ALLEGRO BREEZE®, ALLEGRO RED®, PHAETON®, ALLEGRO BUS®, ZEPHYR®, ROUGHING IT SMOOTHLY®, OPEN ROAD®, POWERGLIDE®, AND PUSHER® ARE REGISTERED TRADEMARKS OF TIFFIN MOTORHOMES, INC. ALL RIGHTS RESERVED.



Over the years, my family and I have had the pleasure of meeting many of our wonderful Tiffin customers. They're truly among the nicest folks in the world. So, if you're thinking about buying a Tiffin, don't be shy about asking our owners to tell you about their experiences. After all, no one knows our coaches better than the people who drive them. Of course, we'd love the chance to chat with you, too, so give us a call, visit our website, or just stop by the office if you're ever in Red Bay.

Safe travels!

Bob Tiffin



TIFFIN MOTORHOMES

WHEREVER YOU GO, WE GO.

105 2ND STREET NW, RED BAY, ALABAMA 35582
CALL 256/356.8661 FAX 256/356.8219