

2013

# Aspect



## CLICK TO NAVIGATE

[Overview](#)

[Lounge](#)

[Bedroom | Bath](#)

[Exterior](#)

[Floorplans](#)

[Graphics & Paint](#)

[WIT Club](#)

[Features](#)

[Galley](#)

[Cab](#)

[SuperStructure](#)

[Interior Décor](#)

[Specifications](#)

[Warranty](#)

2013 **Aspect**



**CLICK TO NAVIGATE**

<a href="#">Overview</a>	<a href="#">Lounge</a>	<a href="#">Bedroom   Bath</a>	<a href="#">Exterior</a>	<a href="#">Floorplans</a>	<a href="#">Graphics &amp; Paint</a>	<a href="#">WIT Club</a>
<a href="#">Features</a>	<a href="#">Galley</a>	<a href="#">Cab</a>	<a href="#">SuperStructure</a>	<a href="#">Interior Décor</a>	<a href="#">Specifications</a>	<a href="#">Warranty</a>



On the cover: 30C Oakwood Full-Body Paint



27K Arctic with Forest Cherry Cabinetry

## Fall in Love with Adventure

Looking for a touring coach experience in an easy-to-drive Class C motor home? You've come to the right place. The Winnebago Aspect® comes in two spacious floorplans with upscale amenities and industry-leading storage capacity while maintaining its automotive-style handling and performance. The all-new 27K floorplan comes loaded with multiple slideouts, multiple flat-panel televisions and your choice of Ultraleather™ furniture. The cab seats even swivel to become an integral part of the lounge. Plus, the Winnebago Industries'® SuperStructure® construction process ensures you will be enjoying your coach for years to come. There's a lot to love about Class C motor homes—especially when that motor home is a 2013 Winnebago Aspect.

### Why Aspect?

- Ultraleather furniture
- LED lighting
- Variety of sofa options
- MCD American Solo® blackout roller shades
- Powered patio awning with metal wrap
- LCD TV in lounge and bedroom
- Available skylight with sliding screen, shade and vent
- Large bedroom wardrobe
- Available 1,000-watt inverter
- 4,000-watt Cummins Onan® generator



**Recognized Quality** The RV Dealers Association bestows its annual Quality Circle Award based on dealer ratings to the manufacturers that provide exceptional products, service and support. Only one manufacturer has received this honor for sixteen consecutive years: Winnebago Industries.®



On the cover: 30C Oakwood Full-Body Paint



27K Arctic with Forest Cherry Cabinetry

## Fall in Love with Adventure

Looking for a touring coach experience in an easy-to-drive Class C motor home? You've come to the right place. The Winnebago Aspect® comes in two spacious floorplans with upscale amenities and industry-leading storage capacity while maintaining its automotive-style handling and performance. The all-new 27K floorplan comes loaded with multiple slideouts, multiple flat-panel televisions and your choice of Ultraleather™ furniture. The cab seats even swivel to become an integral part of the lounge. Plus, the Winnebago Industries'® SuperStructure® construction process ensures you will be enjoying your coach for years to come. There's a lot to love about Class C motor homes—especially when that motor home is a 2013 Winnebago Aspect.

### Why Aspect?

- Ultraleather furniture
- LED lighting
- Variety of sofa options
- MCD American Solo® blackout roller shades
- Powered patio awning with metal wrap
- LCD TV in lounge and bedroom
- Available skylight with sliding screen, shade and vent
- Large bedroom wardrobe
- Available 1,000-watt inverter
- 4,000-watt Cummins Onan® generator



**Recognized Quality** The RV Dealers Association bestows its annual Quality Circle Award based on dealer ratings to the manufacturers that provide exceptional products, service and support. Only one manufacturer has received this honor for sixteen consecutive years: Winnebago Industries.®

## Best in Class

See how Winnebago Industries takes motor home design and function to the next level, and why we've earned the right to be called the Most Recognized Name in Motor Homes.®



Click on this icon throughout the brochure to link to more information on the web.



**RV Radio**® The innovative touch screen *RV Radio* features a CD player, MP3 input and doubles as the rearview monitor.



**On the Mark** The *BenchMark*® Full-Comfort Dinette offers premium innerspring seating that flips up to access hidden storage compartments. At night it converts into a cozy sleeping space.



**Easy In and Out** The *Lowered Entrance Step* is designed for easy access and eliminates the need for an auxiliary entrance step.



**Day and Night** The available smoothly retracting *MCD American Duo*® Solar/Blackout Roller Shades let you control your light and privacy—no matter the time of day.



**Open Wide** Drawers open wide on *Full-Extension Drawer Slides*.



**3-in-1** At the press of a button, the *Rest Easy*® Multi-Position Lounge glides from a sofa into a recliner with a pullout ottoman. Press the button again and it lays down into a comfortable bed.

## Best in Class

See how Winnebago Industries takes motor home design and function to the next level, and why we've earned the right to be called the Most Recognized Name in Motor Homes.®



Click on this icon throughout the brochure to link to more information on the web.



**RV Radio**® The innovative touch screen *RV Radio* features a CD player, MP3 input and doubles as the rearview monitor.



**On the Mark** The *BenchMark*® Full-Comfort Dinette offers premium innerspring seating that flips up to access hidden storage compartments. At night it converts into a cozy sleeping space.



**Easy In and Out** The *Lowered Entrance Step* is designed for easy access and eliminates the need for an auxiliary entrance step.



**Day and Night** The available smoothly retracting *MCD American Duo*® Solar/Blackout Roller Shades let you control your light and privacy—no matter the time of day.



**Open Wide** Drawers open wide on *Full-Extension Drawer Slides*.



**3-in-1** At the press of a button, the *Rest Easy*® Multi-Position Lounge glides from a sofa into a recliner with a pullout ottoman. Press the button again and it lays down into a comfortable bed.



30C Mercury with Coffee-Glazed Vienna Maple Cabinetry

If you take relaxation seriously, you'll appreciate having the option of the Rest Easy® multi-position lounge or the Comfort Sofa Sleeper that easily folds out into a bed with a self-inflating mattress. The 26" flat-panel LCD TV is part of a complete entertainment center with DVD player and surround sound. Keep the fun going even when not connected to a shoreline source, thanks to the standard 4,000-watt Cummins Onan® generator and available 1,000-watt inverter.



Comfort Sofa Sleeper



27K Lounge TV on Swivel Bracket



30C Mercury with Coffee-Glazed Vienna Maple Cabinetry

If you take relaxation seriously, you'll appreciate having the option of the Rest Easy® multi-position lounge or the Comfort Sofa Sleeper that easily folds out into a bed with a self-inflating mattress. The 26" flat-panel LCD TV is part of a complete entertainment center with DVD player and surround sound. Keep the fun going even when not connected to a shoreline source, thanks to the standard 4,000-watt Cummins Onan® generator and available 1,000-watt inverter.



Comfort Sofa Sleeper



27K Lounge TV on Swivel Bracket





27K Galley

Prepare a four-course meal in the full-featured galley and dine in style in the Ultraleather BenchMark full-comfort dinette. Enhance your dining experience by selecting the interior upgrade package, which includes a galley backsplash, range cover, raised-panel refrigerator door insert, wood sink covers and more.



30C Refrigerator



30C Galley



27K Galley

Prepare a four-course meal in the full-featured galley and dine in style in the Ultraleather BenchMark full-comfort dinette. Enhance your dining experience by selecting the interior upgrade package, which includes a galley backsplash, range cover, raised-panel refrigerator door insert, wood sink covers and more.



30C Refrigerator



30C Galley



The generous bedroom with slideout offers ample room for a walk-around queen bed and full wardrobe. A 22" LCD TV comes standard in both models.





27K Bedroom



30C Shower

The generous bedroom with slideout offers ample room for a walk-around queen bed and full wardrobe. A 22" LCD TV comes standard in both models.



30C Vanity and Mirrored Wardrobe



30C Bedroom



Dash with Available Appliqué

Long days on the road are as refreshing as a spring breeze, thanks to Ultraleather cab seats that offer multiple adjustment points, superior lumbar support and swivel to become part of the living area when parked. The RV Radio/rearview monitor and power mirrors are right at your fingertips.



27K Swivel Cab Seats



Dash with Available Appliqué

Long days on the road are as refreshing as a spring breeze, thanks to Ultraleather cab seats that offer multiple adjustment points, superior lumbar support and swivel to become part of the living area when parked. The RV Radio/rearview monitor and power mirrors are right at your fingertips.



27K Swivel Cab Seats

The available exterior entertainment center and standard patio awning provide the perfect place to relax in the great outdoors.

Find additional storage in the large recessed storage compartment with access from the side and rear in the 27K. The compartment cover doubles as a table.

House batteries slide out on a convenient tray for easy maintenance access.



30C Available Exterior Entertainment Center



Slideout Battery Tray



27K Recessed Storage Compartment and Folding Table/Cover



30C Exterior Service Center

The available exterior entertainment center and standard patio awning provide the perfect place to relax in the great outdoors.

Find additional storage in the large recessed storage compartment with access from the side and rear in the 27K. The compartment cover doubles as a table.

House batteries slide out on a convenient tray for easy maintenance access.



30C Available Exterior Entertainment Center



Slideout Battery Tray



27K Recessed Storage Compartment and Folding Table/Cover



30C Exterior Service Center



**Fiberglass Roof**  
The crowned, one-piece fiberglass roof is backed by a 10-year parts-and-labor roof skin warranty.

**Rubber Can't Cut It**  
Rubber roofs used by competitors can streak and degrade over time.

**Thermo-Panel® Sidewalls**  
By layering fiberglass and high-density block foam insulation with welded aluminum support structures, we create some of the industry's strongest, most durable and lightweight sidewalls.

**Embedded Steel** Metal substructures embedded into the sidewall provide solid attachment points to keep cabinets and appliances mounted securely in place.

**E-Coating** An electrodeposition coating helps protect critical steel components.

**Laser-Cut Tubing** Precision laser cutters create precise joints in structural steel that are stronger and require less welding.



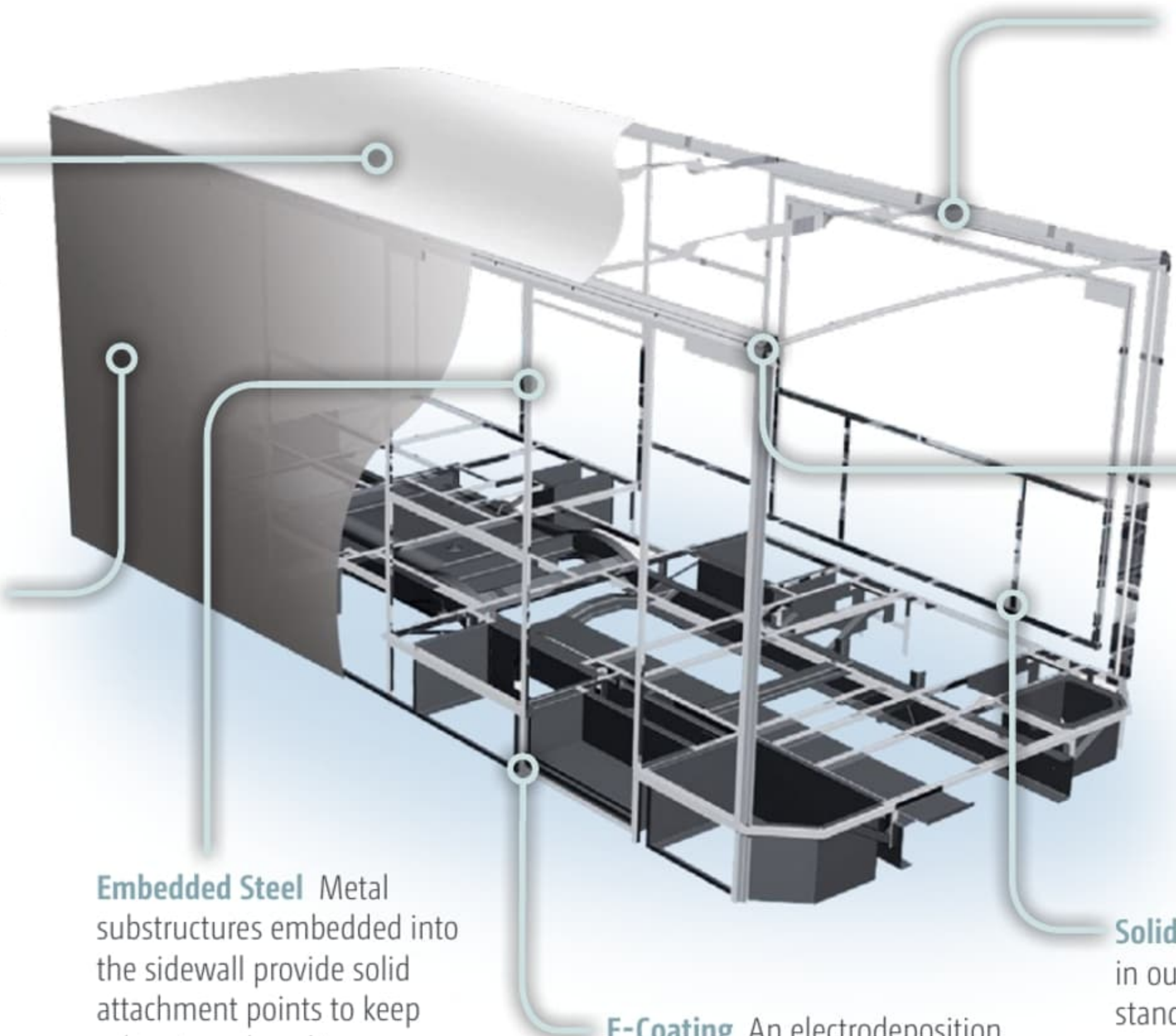
**Interlocking Joints** Specially engineered interlocking joints connect the floor, sidewalls and roof where competitors often rely on simple screws to bear the weight.



**Solid Framework** Aluminum extruded in our own facility to our exacting standards creates an extremely strong and solid structural framework.

**SUPER  
STRUCTURE**  
BUILT TO LAST

Every coach—from our smallest Class C to our largest diesel pusher model—is built to Winnebago Industries'® legendary SuperStructure construction standards. It's a process developed and refined over more than 50 years of building some of the strongest, most durable coaches in the industry.



**Fiberglass Roof**

The crowned, one-piece fiberglass roof is backed by a 10-year parts-and-labor roof skin warranty.

**Rubber Can't Cut It**

Rubber roofs used by competitors can streak and degrade over time.

**Thermo-Panel® Sidewalls**

By layering fiberglass and high-density block foam insulation with welded aluminum support structures, we create some of the industry's strongest, most durable and lightweight sidewalls.

**Embedded Steel** Metal substructures embedded into the sidewall provide solid attachment points to keep cabinets and appliances mounted securely in place.

**Laser-Cut Tubing** Precision laser cutters create precise joints in structural steel that are stronger and require less welding.



**Interlocking Joints** Specially engineered interlocking joints connect the floor, sidewalls and roof where competitors often rely on simple screws to bear the weight.



**Solid Framework** Aluminum extruded in our own facility to our exacting standards creates an extremely strong and solid structural framework.

**E-Coating** An electrodeposition coating helps protect critical steel components.

**SUPER  
STRUCTURE**

BUILT TO LAST

Every coach—from our smallest Class C to our largest diesel pusher model—is built to Winnebago Industries'® legendary SuperStructure construction standards. It's a process developed and refined over more than 50 years of building some of the strongest, most durable coaches in the industry.

**TESTING** Before rolling out of our factories, every coach undergoes an extensive 113-point inspection. Each coach also passes a high-pressure water test that simulates rain at a rate of 50-inches per hour to check for leaks. During the design process, computer simulations, our physical testing center and rigorous test track ensure each model is built to last.



**DETAILS** At Winnebago Industries, we treat the features you can't see with the same care as the ones you can. Look in the access panels of some of our competitors' coaches and you'll see loose insulation and wires haphazardly strewn about. Winnebago Industries maintains a clean fit and finish throughout so your coach will last for the long haul.



**BUILT IN-HOUSE** We extrude our own aluminum. We rotocast our own plastic components. In fact, we manufacture most of our own parts so they are designed to fit the space, rather than fitting the space to an awkward off-the-shelf component size.



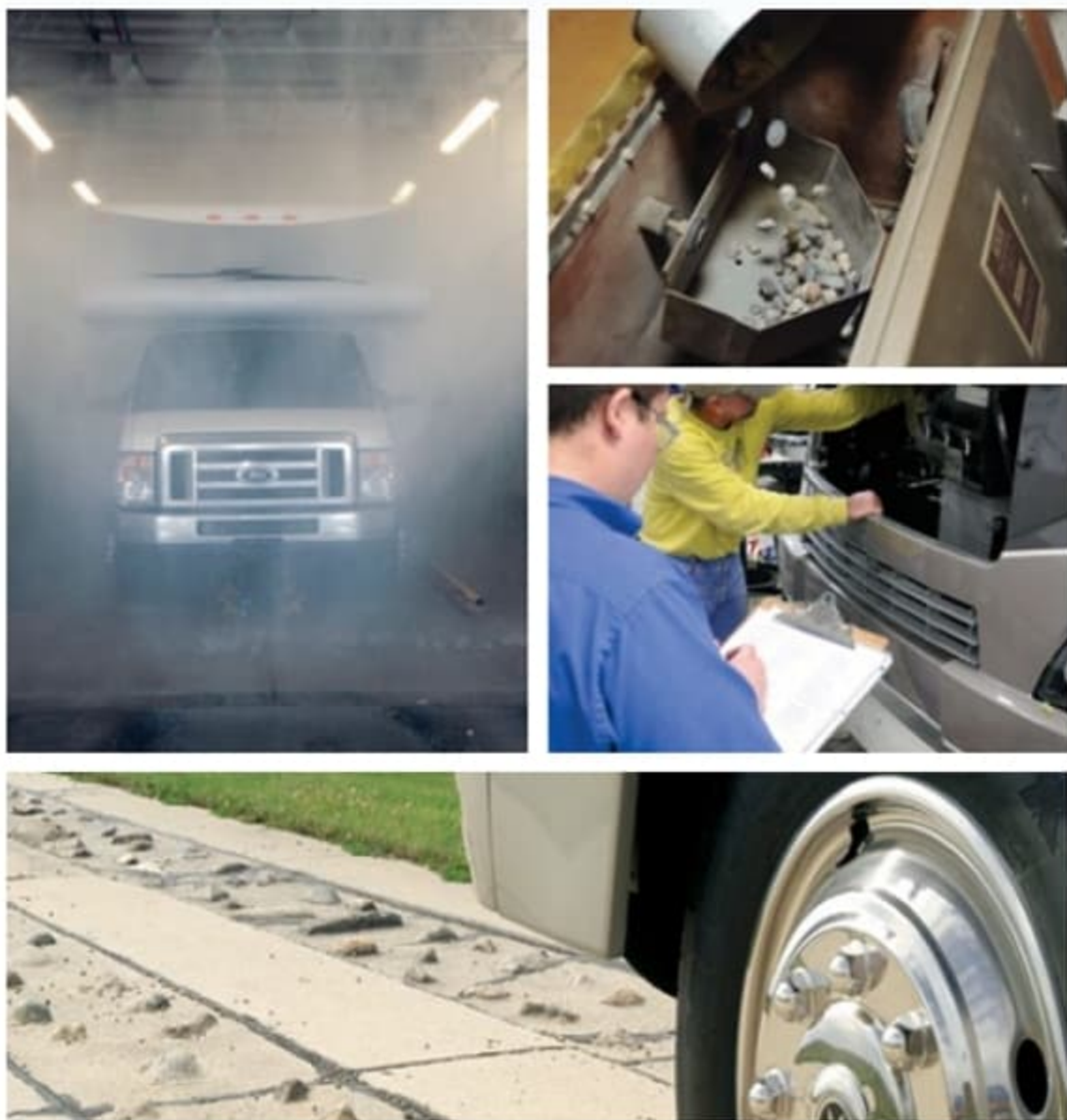
**SUPER  
STRUCTURE**  
BUILT TO LAST

**W** Visit [BetterBuiltRVs.com](http://BetterBuiltRVs.com) to gain real insight into what goes into a Winnebago Industries motor home.

**TAKE A TOUR** We're proud of our processes, state-of-the-art facilities and the people who make Winnebago Industries number one. We invite you to visit our complex in Forest City, Iowa, for a first-hand look at the dedication and technology behind every motor home we build.



**TESTING** Before rolling out of our factories, every coach undergoes an extensive 113-point inspection. Each coach also passes a high-pressure water test that simulates rain at a rate of 50-inches per hour to check for leaks. During the design process, computer simulations, our physical testing center and rigorous test track ensure each model is built to last.



**DETAILS** At Winnebago Industries, we treat the features you can't see with the same care as the ones you can. Look in the access panels of some of our competitors' coaches and you'll see loose insulation and wires haphazardly strewn about. Winnebago Industries maintains a clean fit and finish throughout so your coach will last for the long haul.



**BUILT IN-HOUSE** We extrude our own aluminum. We rotocast our own plastic components. In fact, we manufacture most of our own parts so they are designed to fit the space, rather than fitting the space to an awkward off-the-shelf component size.



**SUPER  
STRUCTURE**  
BUILT TO LAST

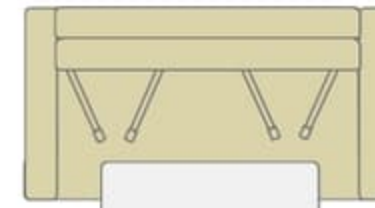
Visit [BetterBuiltRVs.com](http://BetterBuiltRVs.com) to gain real insight into what goes into a Winnebago Industries motor home.

**TAKE A TOUR** We're proud of our processes, state-of-the-art facilities and the people who make Winnebago Industries number one. We invite you to visit our complex in Forest City, Iowa, for a first-hand look at the dedication and technology behind every motor home we build.



**NEW**  
**27K**

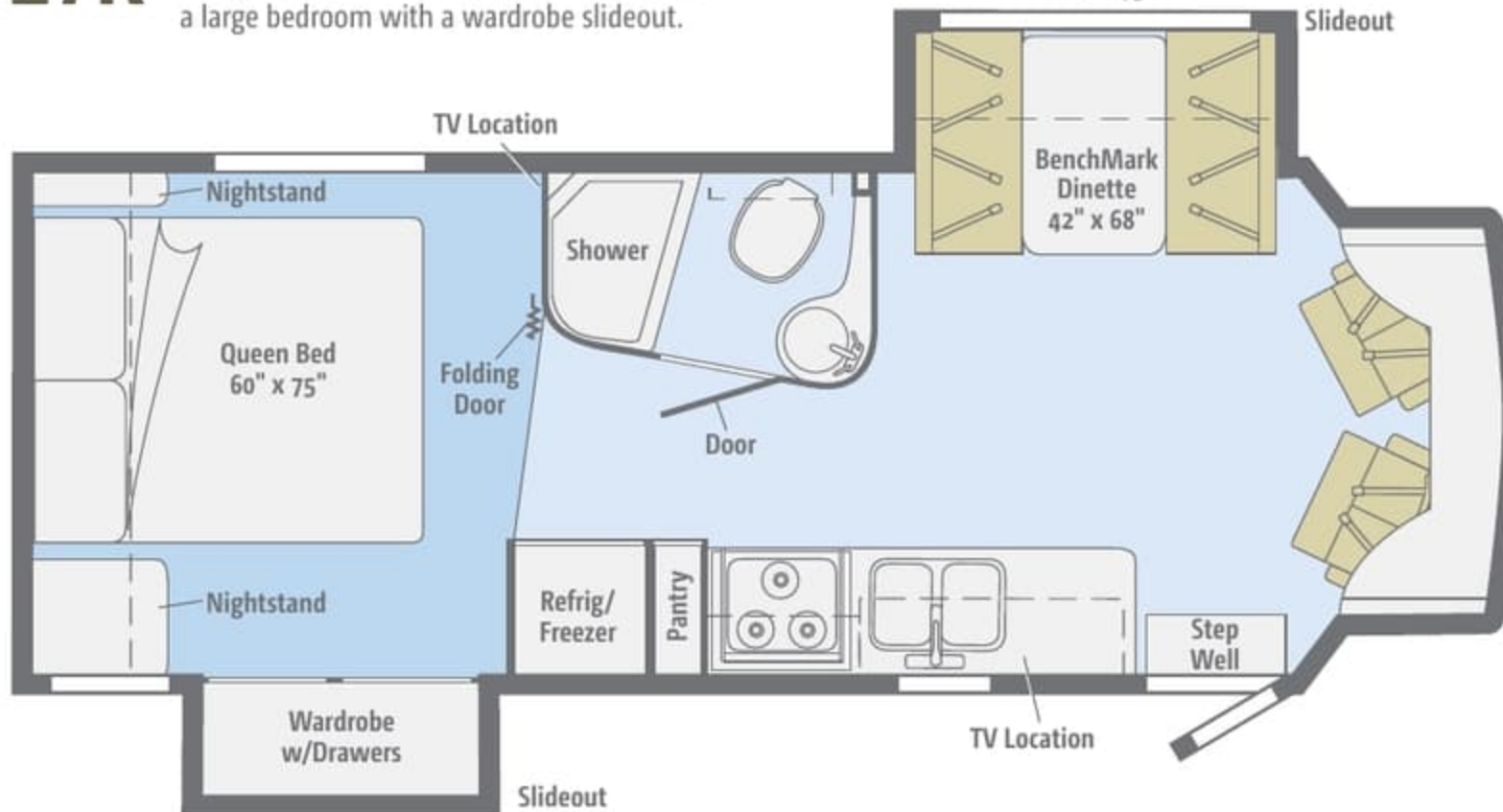
Standard swivel cab seats maximize your living space, which includes a full galley and a large bedroom with a wardrobe slideout.



Comfort Sofa Sleeper w/Table  
60" x 78"



Rest Easy Sofa w/Table  
60" x 75"

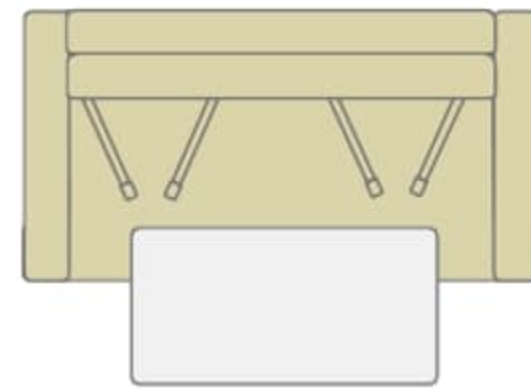


Standard Ultraleather	Carpet	Vinyl

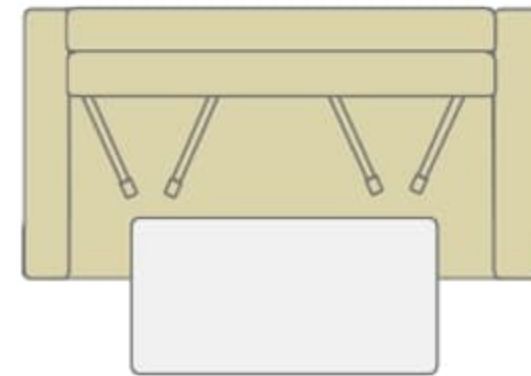
Dimensions shown are for sleeping space only and may vary due to styling differences. Dashed lines denote overhead storage areas. Floorplans and specifications are also available online at [GoWinnebago.com](http://GoWinnebago.com).

**NEW**  
**27K**

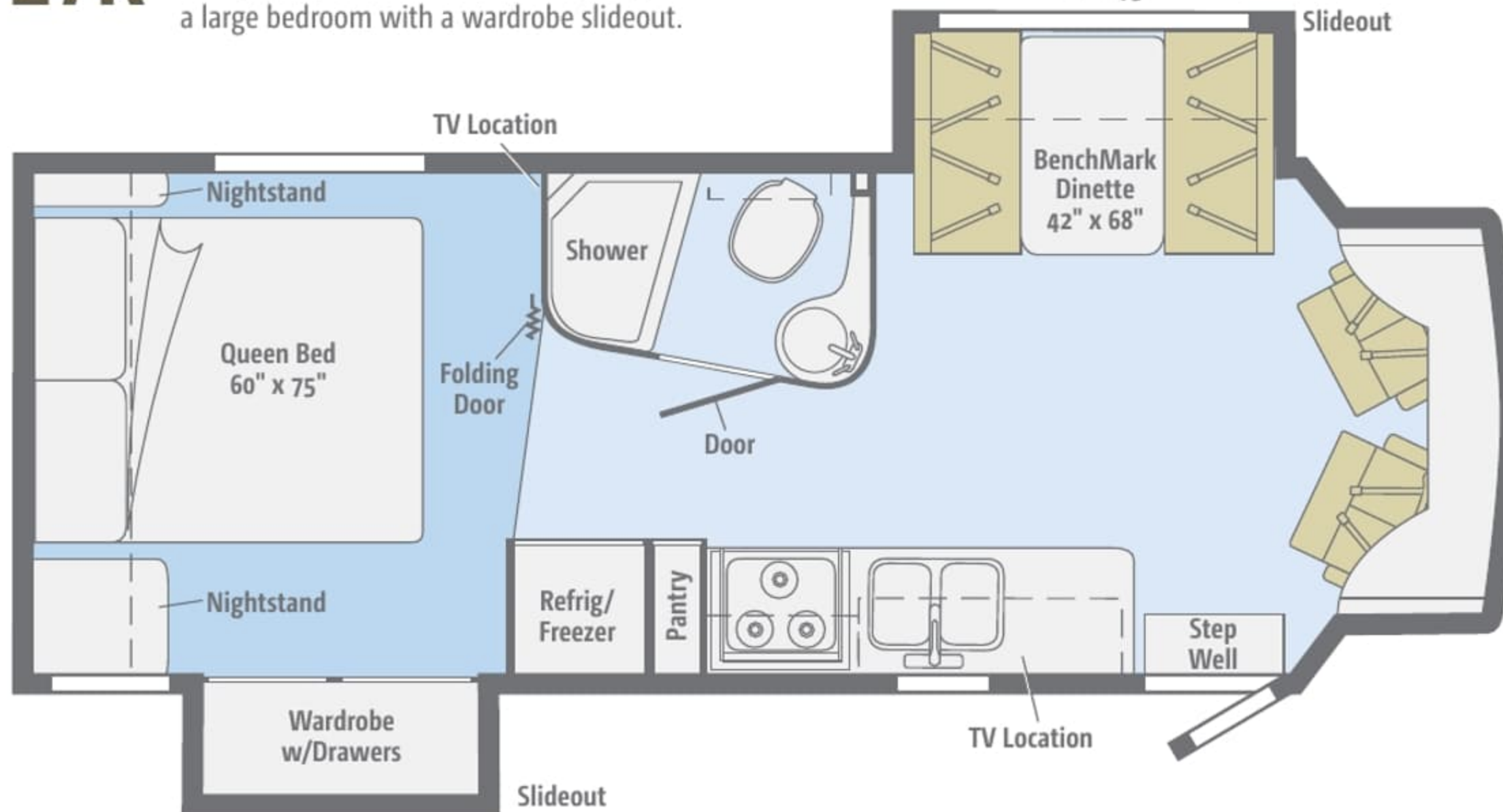
Standard swivel cab seats maximize your living space, which includes a full galley and a large bedroom with a wardrobe slideout.



Comfort Sofa Sleeper w/Table  
60" x 78"



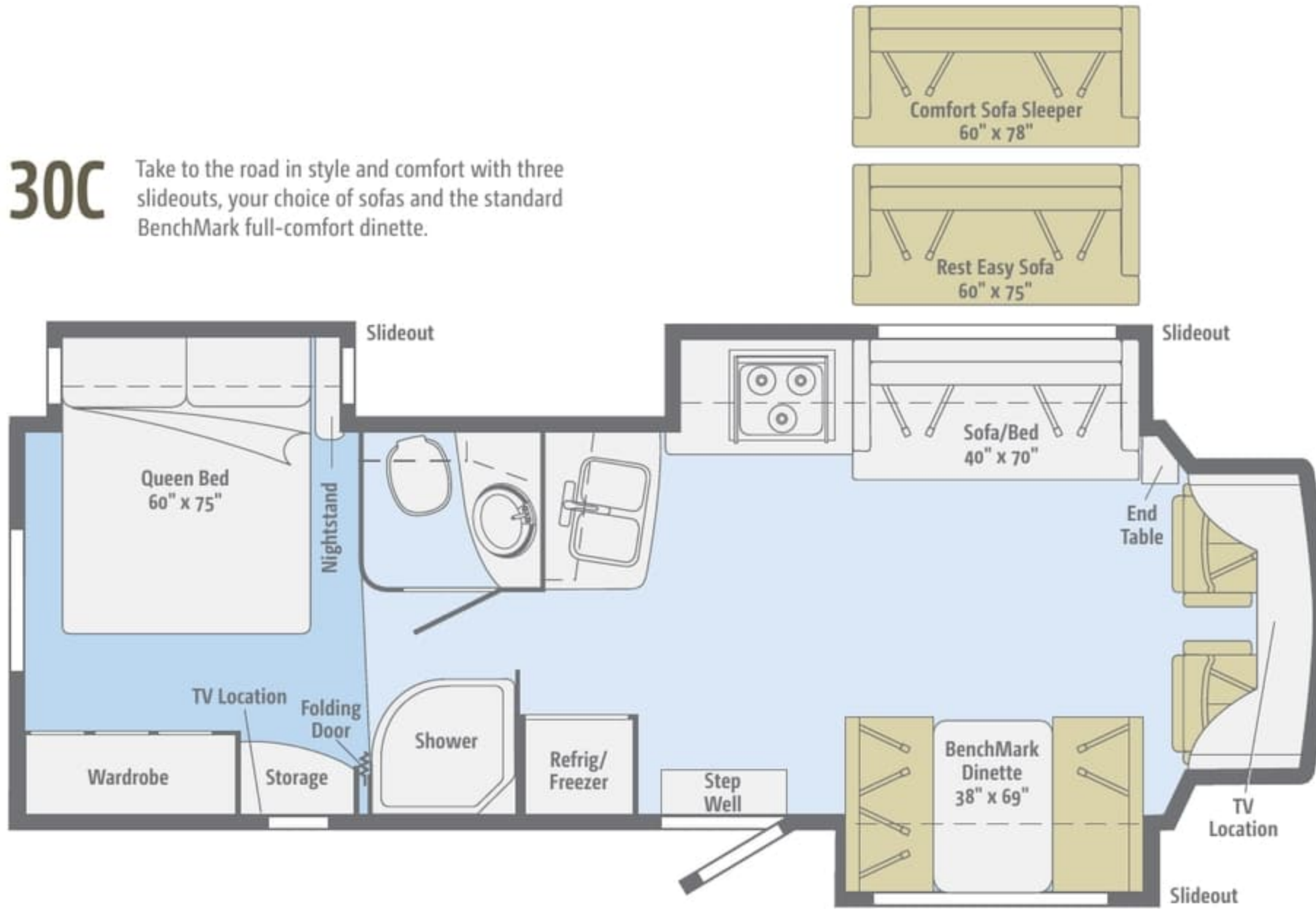
Rest Easy Sofa w/Table  
60" x 75"



Standard Ultraleather	Carpet	Vinyl

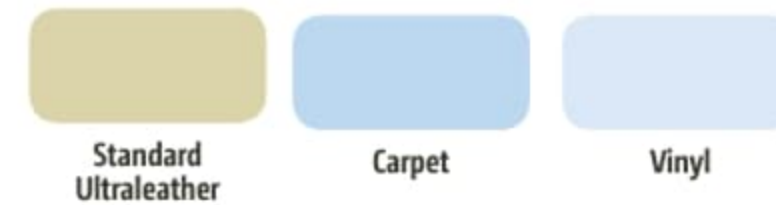
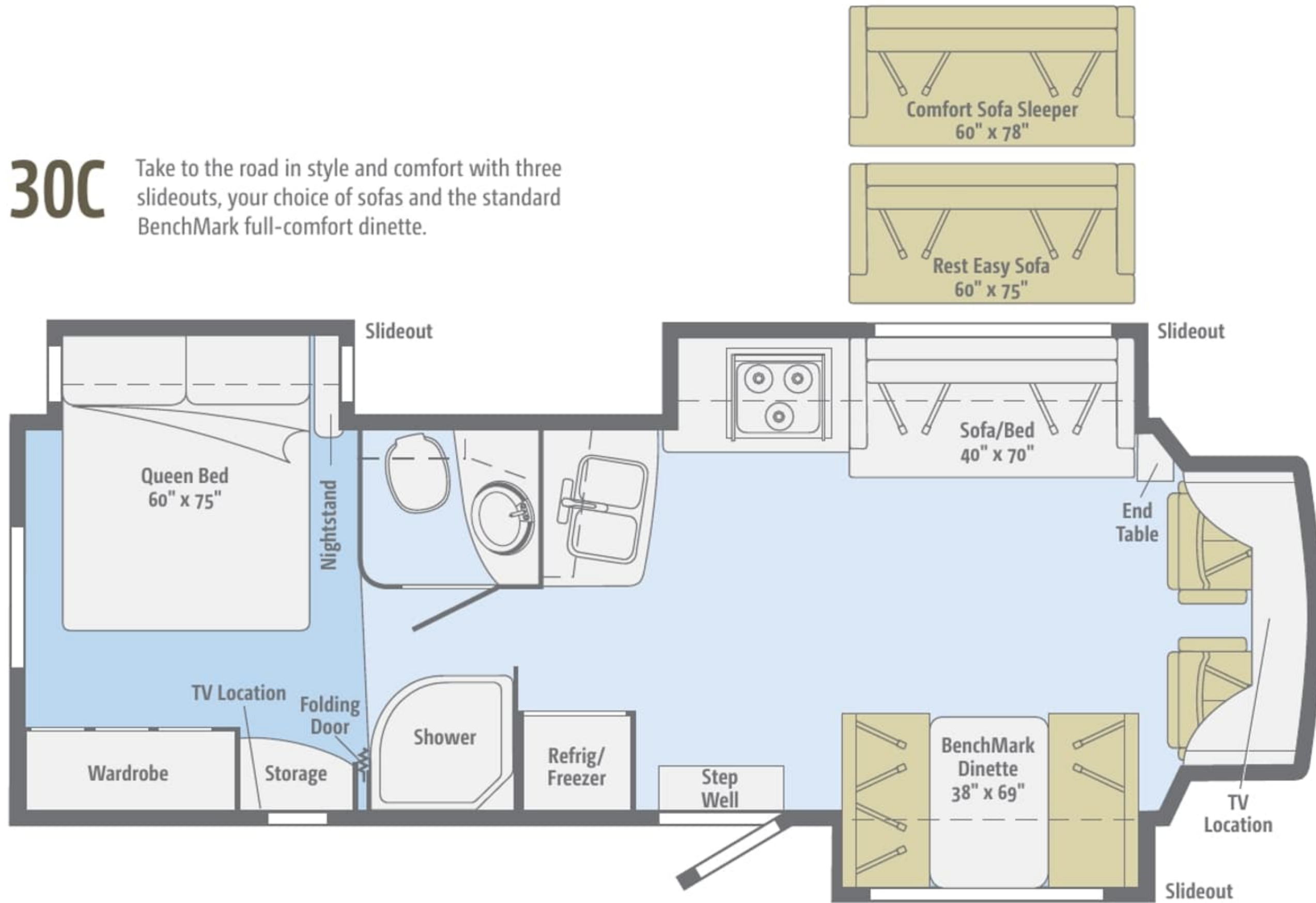
Dimensions shown are for sleeping space only and may vary due to styling differences. Dashed lines denote overhead storage areas. Floorplans and specifications are also available online at [GoWinnebago.com](http://GoWinnebago.com).

**30C** Take to the road in style and comfort with three slideouts, your choice of sofas and the standard BenchMark full-comfort dinette.



Dimensions shown are for sleeping space only and may vary due to styling differences. Dashed lines denote overhead storage areas. Floorplans and specifications are also available online at [GoWinnebago.com](http://GoWinnebago.com).

**30C** Take to the road in style and comfort with three slideouts, your choice of sofas and the standard BenchMark full-comfort dinette.



Dimensions shown are for sleeping space only and may vary due to styling differences. Dashed lines denote overhead storage areas. Floorplans and specifications are also available online at [GoWinnebago.com](http://GoWinnebago.com).



Choose from three fabric collections and three woods with Nickel hardware.

**Westwood**



Main



Surfside Ultraleather



Accent



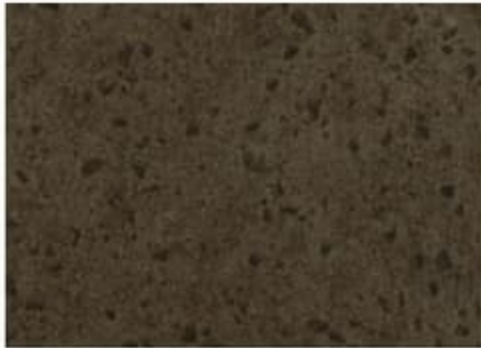
Bedspread



Vinyl



Carpet



Laguna Pebble Omnova  
Countertop



Birchwood Pecan Wall Board



Honey Cherry



Forest Cherry



Coffee-Glazed  
Vienna Maple

*Fabrics and carpets may change without notice or obligation.*

Choose from three fabric collections and three woods with Nickel hardware.

**Westwood**



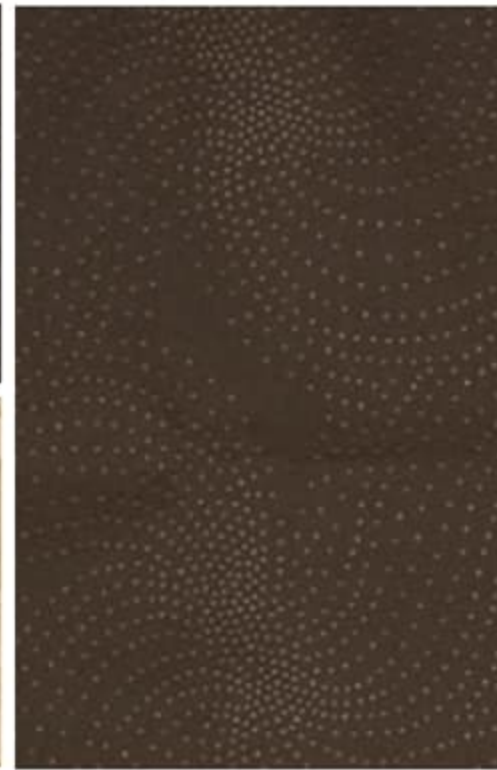
Main



Surfside Ultraleather



Accent



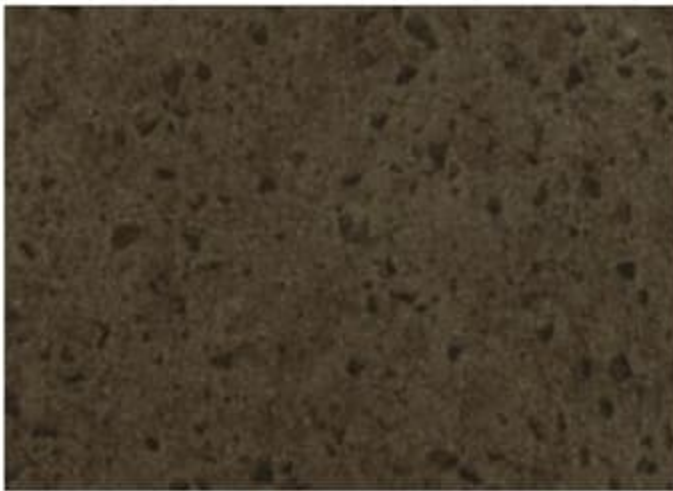
Bedspread



Vinyl



Carpet



Laguna Pebble Omnova  
Countertop



Birchwood Pecan Wall Board



Honey Cherry



Forest Cherry



Coffee-Glazed  
Vienna Maple

*Fabrics and carpets may change without notice or obligation.*

Choose from three fabric collections and three woods with Nickel hardware.

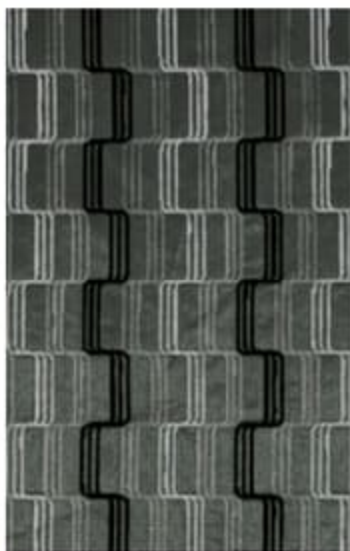
Arctic



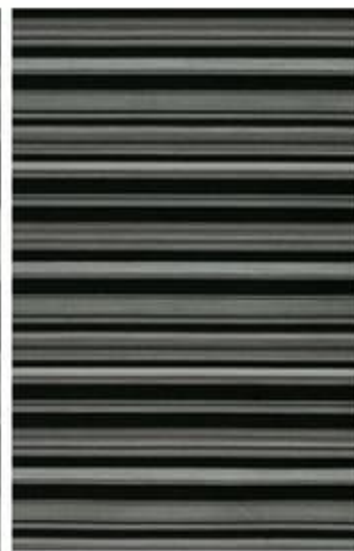
Main



Stucco Ultraleather



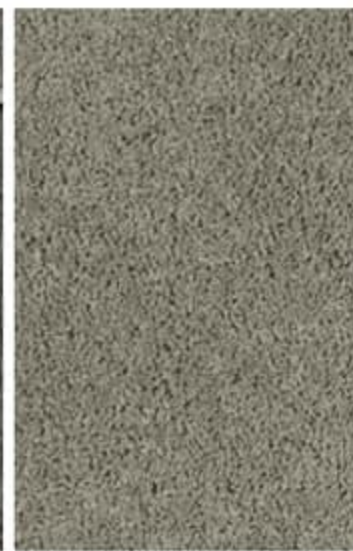
Accent



Bedspread



Vinyl



Carpet



Mineral Geode Omnova  
Countertop



Driftwood Wall Board



Honey Cherry



Forest Cherry



Coffee-Glazed  
Vienna Maple

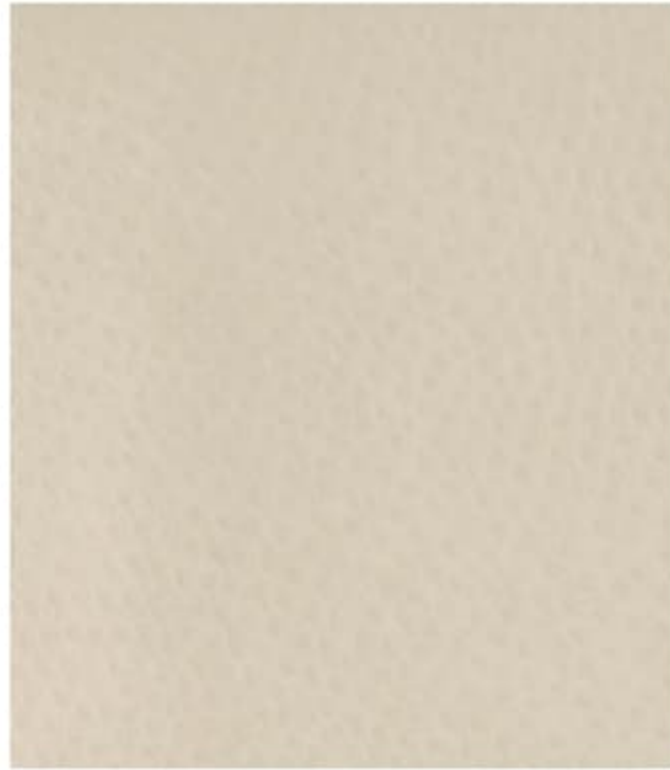
Fabrics and carpets may change without notice or obligation.

Choose from three fabric collections and three woods with Nickel hardware.

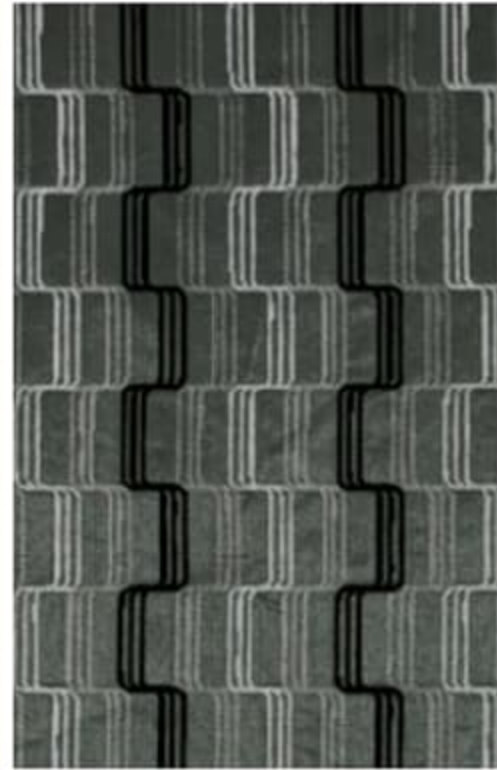
**Arctic**



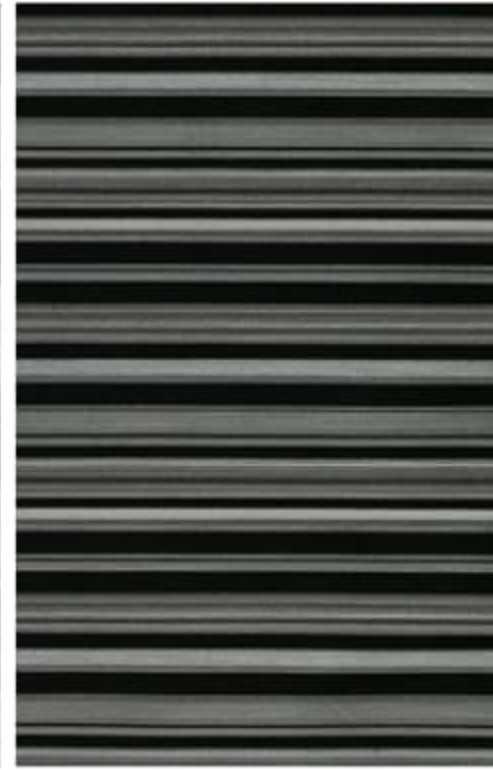
Main



Stucco Ultraleather



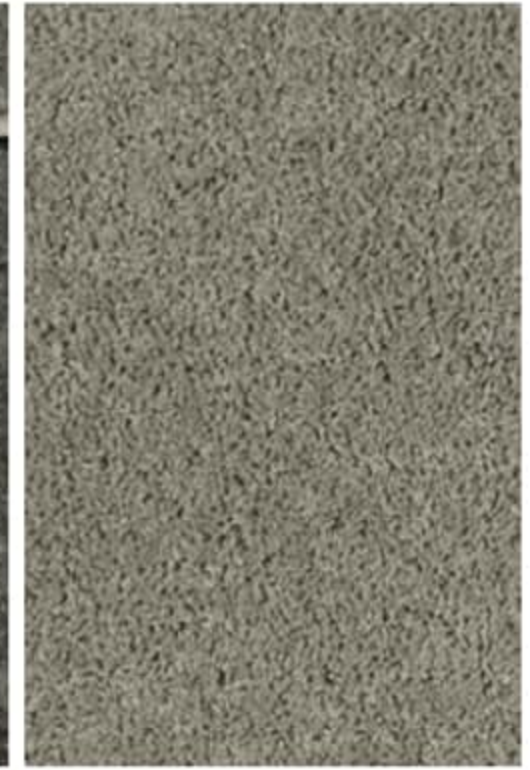
Accent



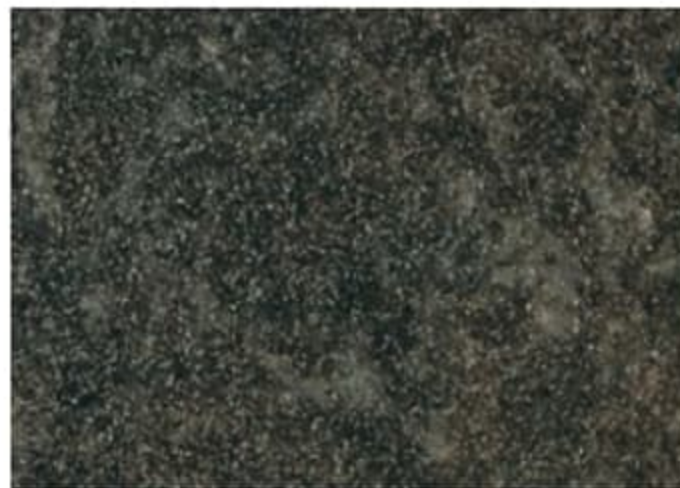
Bedspread



Vinyl



Carpet



Mineral Geode Omnova  
Countertop



Driftwood Wall Board



Honey Cherry



Forest Cherry



Coffee-Glazed  
Vienna Maple

*Fabrics and carpets may change without notice or obligation.*

Choose from three fabric collections and three woods with Nickel hardware.

**Mercury**



Main



Manilla Ultraleather



Accent



Bedsread



Vinyl



Carpet



Travertine Weathered Omnova  
Countertop



Mineral Wall Board



Honey Cherry



Forest Cherry



Coffee-Glazed  
Vienna Maple

*Fabrics and carpets may change without notice or obligation.*

Choose from three fabric collections and three woods with Nickel hardware.

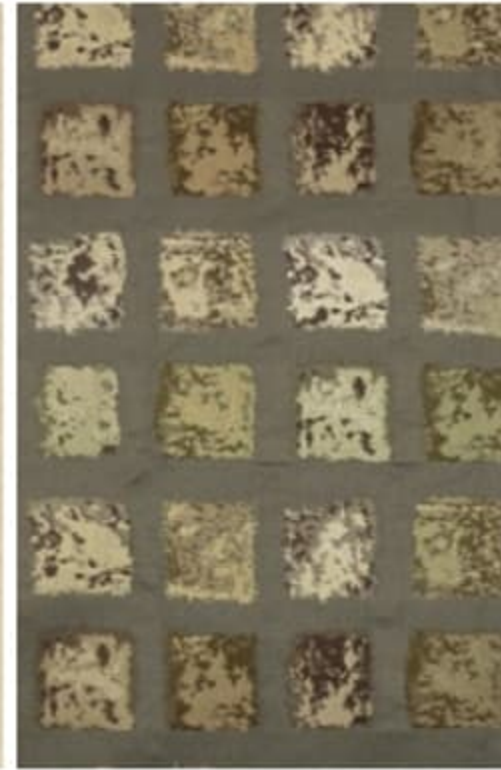
**Mercury**



Main



Manilla Ultraleather



Accent



Bedspread



Vinyl



Carpet



Travertine Weathered Omnova  
Countertop



Mineral Wall Board



Honey Cherry



Forest Cherry



Coffee-Glazed  
Vienna Maple

*Fabrics and carpets may change without notice or obligation.*

Deluxe graphics and fiberglass running boards come standard. Upgrade to full-body paint for even more curb appeal.



**Mojave Wind**  
DELUXE GRAPHICS



**Sierra**  
DELUXE GRAPHICS

Deluxe graphics and fiberglass running boards come standard. Upgrade to full-body paint for even more curb appeal.



**Mojave Wind**  
DELUXE GRAPHICS



**Sierra**  
DELUXE GRAPHICS



Deluxe graphics and fiberglass running boards come standard. Upgrade to full-body paint for even more curb appeal.



**Chestnut Ridge**  
FULL-BODY PAINT



**Eclipse**  
FULL-BODY PAINT



**Silver Smoke**  
FULL-BODY PAINT



**Oakwood**  
FULL-BODY PAINT

Deluxe graphics and fiberglass running boards come standard. Upgrade to full-body paint for even more curb appeal.



**Chestnut Ridge**  
FULL-BODY PAINT



**Eclipse**  
FULL-BODY PAINT



**Silver Smoke**  
FULL-BODY PAINT



**Oakwood**  
FULL-BODY PAINT

## Weights & Measures

**27K**

**30C**

Length	29'5"	31'10"
Exterior Height <sup>1</sup>	10'9"	10'8"
Exterior Width	7'11"	7'11"
Exterior Storage <sup>2</sup> (cu. ft.)	82.2	59
Awning Length	12'	14'
Interior Height	6'5"	6'5"
Interior Width	7'8"	7'8"
Freshwater Capacity w/Heater <sup>3</sup> (gal.)	40	35
Holding Tank Capacity - Black/Gray <sup>2</sup> (gal.)	34/31	26/34
LP Capacity <sup>4</sup> (gal.)	18	18
Fuel Capacity (gal.)	55	55
GCWR <sup>5</sup> (lbs.)	22,000	22,000
GVWR (lbs.)	14,500	14,500
GAWR - Front (lbs.)	5,000	5,000
GAWR - Rear (lbs.)	9,600	9,600
Wheelbase	200"	220"

## Chassis

### FORD® E450 CHASSIS

305-hp 6.8L Super-Duty V10 SEFI Triton® engine

TorqShift™ 5-speed automatic transmission

120-amp. alternator

4-wheel ABS

Trailer Hitch<sup>6</sup> 5,000-lb. drawbar/350-lb. maximum vertical tongue weight and wiring w/7-pin connector

Stainless steel wheel liners

Rear auxiliary air springs



Ford E450 Chassis

#### OPTIONAL EQUIPMENT

Hydraulic leveling jacks w/automatic controls (front and rear)

Stylized aluminum wheels

## CAB CONVENIENCES

**Cab Seats** armrests, lumbar support and multi-adjustable slide/recline

**Cab seats w/swivel pedestal** (27K)

**RV Radio®/rearview monitor system** 6.5" LCD touch screen color monitor, CD player, weather band, handheld remote, iPod®/MP3 input, color camera w/one-way audio, satellite-ready

**Chassis/house battery radio power switch**

**Tilt steering wheel**

**Cruise control**

**Power steering**

**12-volt powerpoints**

**Power door locks**

**Sunvisors**

**Power exterior mirrors w/defrost**

#### OPTIONAL EQUIPMENT

**Cab seats w/swivel pedestal** (30C)

**Sirius® Satellite Radio System** w/iPod interface connector

## INTERIOR

**Home Theater Sound System** receiver, DVD player, amplifier, 5 speakers, subwoofer

**26" LCD TV**

**LED lights**

**Satellite system ready**

**Video selection system**

**Front privacy curtain**

**MCD American Solo® blackout roller shades** (lounge, dinette and bedroom)

**Soft vinyl ceilings**

**Mini blinds** (galley)

**Tinted windows**

**Amplified digital HDTV antenna**

**OnePlace® systems center**

**Powered roof vent** (bath and bedroom)

**Roof vent** (lounge)

**Key-activated slideroom master lock switch**

#### OPTIONAL EQUIPMENT

**Skylight w/sliding screen, shade and vent**

**Interior Upgrade Package** rope lighting, galley backsplash, dash and beverage tray appliqué, carpet floor mats in the cab, decorative picture (NA 27K), 2 wood galley sink covers, range cover, raised-panel stile-and-rail refrigerator door insert, 2 sofa throw pillows, MCD American Duo® solar/blackout roller shades in the lounge, dinette and bedroom

**Tinted, dual-glazed, thermo-insulated windows**

**Satellite TV antenna system**

**King-Dome® HD-ready in-motion satellite dish antenna system**

**Carpet in lounge and dining area**

## GALLEY

**Thermo-formed laminated countertops**

**2-door refrigerator/freezer**

**3-burner range top w/storage below**

**Microwave oven w/vented range fan**

## Weights & Measures

	<b>27K</b>	<b>30C</b>
Length	29'5"	31'10"
Exterior Height <sup>1</sup>	10'9"	10'8"
Exterior Width	7'11"	7'11"
Exterior Storage <sup>2</sup> (cu. ft.)	82.2	59
Awning Length	12'	14'
Interior Height	6'5"	6'5"
Interior Width	7'8"	7'8"
Freshwater Capacity w/Heater <sup>3</sup> (gal.)	40	35
Holding Tank Capacity - Black/Gray <sup>3</sup> (gal.)	34/31	26/34
LP Capacity <sup>4</sup> (gal.)	18	18
Fuel Capacity (gal.)	55	55
GCWR <sup>5</sup> (lbs.)	22,000	22,000
GVWR (lbs.)	14,500	14,500
GAWR - Front (lbs.)	5,000	5,000
GAWR - Rear (lbs.)	9,600	9,600
Wheelbase	200"	220"

## Chassis

### FORD® E450 CHASSIS

305-hp 6.8L Super-Duty V10 SEFI Triton® engine

TorqShift™ 5-speed automatic transmission

120-amp. alternator

4-wheel ABS

Trailer Hitch<sup>6</sup> 5,000-lb. drawbar/350-lb. maximum vertical tongue weight and wiring w/7-pin connector

Stainless steel wheel liners

Rear auxiliary air springs



Ford E450 Chassis

#### OPTIONAL EQUIPMENT

Hydraulic leveling jacks w/automatic controls (front and rear)

Stylized aluminum wheels

## CAB CONVENIENCES

**Cab Seats** armrests, lumbar support and multi-adjustable slide/recline

**Cab seats w/swivel pedestal** (27K)

**RV Radio®/rearview monitor system** 6.5" LCD touch screen color monitor, CD player, weather band, handheld remote, iPod®/MP3 input, color camera w/one-way audio, satellite-ready

**Chassis/house battery radio power switch**

**Tilt steering wheel**

**Cruise control**

**Power steering**

**12-volt powerpoints**

**Power door locks**

**Sunvisors**

**Power exterior mirrors w/defrost**

#### OPTIONAL EQUIPMENT

**Cab seats w/swivel pedestal** (30C)

**Sirius® Satellite Radio System** w/iPod interface connector

## INTERIOR

**Home Theater Sound System** receiver, DVD player, amplifier, 5 speakers, subwoofer

**26" LCD TV**

**LED lights**

**Satellite system ready**

**Video selection system**

**Front privacy curtain**

**MCD American Solo® blackout roller shades** (lounge, dinette and bedroom)

**Soft vinyl ceilings**

**Mini blinds** (galley)

**Tinted windows**

**Amplified digital HDTV antenna**

**OnePlace® systems center**

**Powered roof vent** (bath and bedroom)

**Roof vent** (lounge)

**Key-activated slideroom master lock switch**

#### OPTIONAL EQUIPMENT

**Skylight w/sliding screen, shade and vent**

**Interior Upgrade Package** rope lighting, galley backsplash, dash and beverage tray appliqué, carpet floor mats in the cab, decorative picture (NA 27K), 2 wood galley sink covers, range cover, raised-panel stile-and-rail refrigerator door insert, 2 sofa throw pillows, MCD American Duo® solar/blackout roller shades in the lounge, dinette and bedroom

**Tinted, dual-glazed, thermo-insulated windows**

**Satellite TV antenna system**

**King-Dome® HD-ready in-motion satellite dish antenna system**

**Carpet in lounge and dining area**

## GALLEY

**Thermo-formed laminated countertops**

**2-door refrigerator/freezer**

**3-burner range top w/storage below**

**Microwave oven w/vented range fan**

**OPTIONAL EQUIPMENT**

Cold water filtration system

Stainless steel microwave/convection oven w/range fan

**BATH**

Thermo-formed laminated countertop

Skylight

Flexible showerhead

Curved textured glass shower door (30C)

Retractable, self-cleaning shower screen (27K)

Porcelain toilet

Water pump switch

**BEDROOM**

Queen bed w/foam mattress, headboard, bedspread, pillows and pillow shams

22" DC LCD TV

**EXTERIOR**

Power patio awning w/metal wrap

Porch light w/interior switch

Stepwell light w/interior switch

Premium high-gloss skin

Rear mud flaps

Large rear storage compartment w/rotocast compartments w/drain plugs, cover/30" x 72" folding table (27K)

Fiberglass running boards w/wheel lips

**OPTIONAL EQUIPMENT**

Entertainment Center AM/FM stereo, CD player, TV jack, removable TV table, lockable compartment (27K)

Entertainment Center 26" LCD TV, AM/FM stereo, DVD player w/remote, 2 speakers, lockable compartment, radio antenna (30C)

**HEATING & COOLING SYSTEM**

13,500 BTU roof-mount, high-efficiency A/C w/heat pump

30,000 BTU low-profile, ducted furnace

**OPTIONAL EQUIPMENT**

14,800 BTU roof-mount, high efficiency A/C w/heat pump

**ELECTRICAL SYSTEM**

Exterior AC duplex receptacle and TV jack

4,000-watt Cummins Onan® MicroQuiet™ gas generator

AC/DC load center, 45-amp. converter/charger

Power Cord Compartment 30-amp. power cord, shoreline/generator automatic changeover switch

Coach battery disconnect system

Automatic dual battery charge control

Auxiliary start circuit

Two deep-cycle, Group 31 batteries on a slideout tray

**OPTIONAL EQUIPMENT**

1,000-watt DC/AC inverter

**PLUMBING SYSTEM**

Rear Trunk w/Service Center cable TV input, portable satellite dish hookup, pressurized city water hookup w/diverter valve, exterior wash station w/lighted pump switch (27K water features are located in an above-floor rear compartment)

Drainage valve compartment

Water tank fill w/lockable door

10' sewer hose

6-gallon electric ignition, 110 V/LP water heater w/energy management system (EMS)

TrueLevel™ holding-tank monitoring system

Winterization Package water heater bypass valve and siphon tube

Permanent-mount LP tank w/gauge

Heated holding-tank compartment

On-demand water pump

**SAFETY**

Seat belts

Driver and passenger air bags

Child seat tether anchor (dinette)

LP, smoke and carbon monoxide detectors

10 BC fire extinguisher

Ground fault interrupter

High-mount brake lamps

**WARRANTY<sup>6</sup>**12-month/15,000-mile basic warranty<sup>7</sup>36-month/36,000-mile limited warranty on structure<sup>7</sup>10-year limited parts-and-labor warranty on roof skin<sup>7</sup>

- 1 The height of each model is measured to the top of the tallest standard feature and is based on the curb weight of a typically equipped unit. The actual height of your vehicle may vary by several inches depending on chassis or equipment variations. Please contact your dealer for further information.
  - 2 The load capacity of your motorhome is designated by weight, not by volume, so you cannot necessarily use all available space when loading your motor home.
  - 3 Capacities are based on measurements prior to tank installation. Slight capacity variations can result due to installation applications.
  - 4 Capacities shown are tank manufacturer's listed water capacity (W.C.). Actual filled LP capacity is 80% of listing due to overfilling prevention device on tank.
  - 5 Actual towing capacity is dependent on your particular loading and towing circumstances which includes the GVWR, GAWR, and GCWR, as well as adequate trailer brakes. Please refer to the Operator's Manual of your vehicle for further towing information.
  - 6 See separate chassis warranty.
  - 7 See your dealer for complete warranty information.
- NA Not Available
- Not all items available in combination. See dealer for details. Winnebago Industries'™ continuing program of product improvement makes specifications, equipment, model availability, and prices subject to change without notice. Comparisons to other motorhomes are based on the most recent information available at printing.

**OPTIONAL EQUIPMENT**

Cold water filtration system

Stainless steel microwave/convection oven w/range fan

**BATH**

Thermo-formed laminated countertop

Skylight

Flexible showerhead

Curved textured glass shower door (30C)

Retractable, self-cleaning shower screen (27K)

Porcelain toilet

Water pump switch

**BEDROOM**

Queen bed w/foam mattress, headboard, bedspread, pillows and pillow shams

22" DC LCD TV

**EXTERIOR**

Power patio awning w/metal wrap

Porch light w/interior switch

Stepwell light w/interior switch

Premium high-gloss skin

Rear mud flaps

Large rear storage compartment w/rotocast compartments w/drain plugs, cover/30" x 72" folding table (27K)

Fiberglass running boards w/wheel lips

**OPTIONAL EQUIPMENT**

Entertainment Center AM/FM stereo, CD player, TV jack, removable TV table, lockable compartment (27K)

Entertainment Center 26" LCD TV, AM/FM stereo, DVD player w/remote, 2 speakers, lockable compartment, radio antenna (30C)

**HEATING & COOLING SYSTEM**

13,500 BTU roof-mount, high-efficiency A/C w/heat pump

30,000 BTU low-profile, ducted furnace

**OPTIONAL EQUIPMENT**

14,800 BTU roof-mount, high efficiency A/C w/heat pump

**ELECTRICAL SYSTEM**

Exterior AC duplex receptacle and TV jack

4,000-watt Cummins Onan® MicroQuiet™ gas generator

AC/DC load center, 45-amp. converter/charger

Power Cord Compartment 30-amp. power cord, shoreline/generator automatic changeover switch

Coach battery disconnect system

Automatic dual battery charge control

Auxiliary start circuit

Two deep-cycle, Group 31 batteries on a slideout tray

**OPTIONAL EQUIPMENT**

1,000-watt DC/AC inverter

**PLUMBING SYSTEM**

Rear Trunk w/Service Center cable TV input, portable satellite dish hookup, pressurized city water hookup w/diverter valve, exterior wash station w/lighted pump switch (27K water features are located in an above-floor rear compartment)

Drainage valve compartment

Water tank fill w/lockable door

10' sewer hose

6-gallon electric ignition, 110 V/LP water heater w/energy management system (EMS)

TrueLevel™ holding-tank monitoring system

Winterization Package water heater bypass valve and siphon tube

Permanent-mount LP tank w/gauge

Heated holding-tank compartment

On-demand water pump

**SAFETY**

Seat belts

Driver and passenger air bags

Child seat tether anchor (dinette)

LP, smoke and carbon monoxide detectors

10 BC fire extinguisher

Ground fault interrupter

High-mount brake lamps

**WARRANTY<sup>6</sup>**12-month/15,000-mile basic warranty<sup>7</sup>36-month/36,000-mile limited warranty on structure<sup>7</sup>10-year limited parts-and-labor warranty on roof skin<sup>7</sup>

- 1 The height of each model is measured to the top of the tallest standard feature and is based on the curb weight of a typically equipped unit. The actual height of your vehicle may vary by several inches depending on chassis or equipment variations. Please contact your dealer for further information.
- 2 The load capacity of your motorhome is designated by weight, not by volume, so you cannot necessarily use all available space when loading your motor home.
- 3 Capacities are based on measurements prior to tank installation. Slight capacity variations can result due to installation applications.
- 4 Capacities shown are tank manufacturer's listed water capacity (W.C.). Actual filled LP capacity is 80% of listing due to overfilling prevention device on tank.
- 5 Actual towing capacity is dependent on your particular loading and towing circumstances which includes the GVWR, GAWR, and GCWR, as well as adequate trailer brakes. Please refer to the Operator's Manual of your vehicle for further towing information.
- 6 See separate chassis warranty.
- 7 See your dealer for complete warranty information.

NA Not Available

Not all items available in combination. See dealer for details. Winnebago Industries™ continuing program of product improvement makes specifications, equipment, model availability, and prices subject to change without notice. Comparisons to other motorhomes are based on the most recent information available at printing.

# GoWinnebago.com Has Gone Mobile

Learn more about the 2013 Aspect on your computer, smartphone or tablet. Visit [GoWinnebago.com/Aspect](http://GoWinnebago.com/Aspect) for the complete Aspect experience.



# PREFERRED CARE PROGRAM

We back our motor homes with best-in-class support both before *and* after the sale:

- 12-month/15,000-mile basic limited warranty
- 36-month/36,000-mile warranty on structure
- 10-year standard limited parts-and-labor roof skin warranty
- Complimentary 24-hour roadside assistance program



**TRIP**Saver  
FAST TRACK PARTS

- TripSaver® Fast Track Parts guarantees that in-stock warranty parts ship directly to your dealer within 24 hours
- National dealer service network

## Join the Club, Join the Fun

As a Winnebago motor home owner, you are invited to join the WIT Club. It's a great way to take full advantage of your new coach and meet fun-loving WIT Club members from across the country who make motor home adventures a way of life.



### Members enjoy:

- Caravans and rallies
- Newsletters
- Local and state group activities
- RV travel benefits

See more on [WITclub.com](http://WITclub.com)

### Grand National Rally

Each year, thousands of Winnebago Industries motor home owners descend upon Forest City, Iowa, for the Grand National Rally. Rally goes connect with old friends and enjoy concerts, tours, activities and more in a weeklong celebration of the motor home lifestyle. Join us this July for a week you'll never forget.



# GoWinnebago.com Has Gone Mobile

Learn more about the 2013 Aspect on your computer, smartphone or tablet. Visit [GoWinnebago.com/Aspect](http://GoWinnebago.com/Aspect) for the complete Aspect experience.



# PREFERRED CARE PROGRAM

We back our motor homes with best-in-class support both before *and* after the sale:

- 12-month/15,000-mile basic limited warranty
- 36-month/36,000-mile warranty on structure
- 10-year standard limited parts-and-labor roof skin warranty
- Complimentary 24-hour roadside assistance program



**TRIP Saver**  
FAST TRACK PARTS

- TripSaver® Fast Track Parts guarantees that in-stock warranty parts ship directly to your dealer within 24 hours
- National dealer service network

## Join the Club, Join the Fun

As a Winnebago motor home owner, you are invited to join the WIT Club. It's a great way to take full advantage of your new coach and meet fun-loving WIT Club members from across the country who make motor home adventures a way of life.



### Members enjoy:

- Caravans and rallies
- Newsletters
- Local and state group activities
- RV travel benefits

See more on [WITclub.com](http://WITclub.com)



### Grand National Rally

Each year, thousands of Winnebago Industries motor home owners descend upon Forest City, Iowa, for the Grand National Rally. Rally goes connect with old friends and enjoy concerts, tours, activities and more in a weeklong celebration of the motor home lifestyle. Join us this July for a week you'll never forget.

