

ELLIPSE

2013



CLICK TO NAVIGATE

[Overview](#)
[Features](#)

[Lounge](#)
[Kitchen](#)

[Dining](#)
[Bedroom | Bath](#)

[Cab](#)
[Exterior](#)

[SuperStructure](#)
[Chassis](#)

[Floorplans](#)
[Interior Décor](#)

[Paint](#)
[Specifications](#)

[WIT Club](#)
[Warranty](#)

ELLIPSE

2013



CLICK TO NAVIGATE

Overview	Lounge	Dining	Cab	SuperStructure	Floorplans	Paint	WIT Club
Features	Kitchen	Bedroom Bath	Exterior	Chassis	Interior Décor	Specifications	Warranty



ON THE COVER: 42GD Platinum Full-Body Paint

42QD Coral Cove with Coffee-Glazed Forest Cherry Cabinetry

YOUR DREAM ON WHEELS

True elegance comes from within, which is why the Itasca Ellipse® starts with the Maxum® tag-axle chassis with lowered-rail construction, the world's best motor home foundation, featuring ZF™ Independent Front Suspension, a 450-hp Cummins® diesel engine and an incredible amount of pass-through storage. With that as our starting point, we select only premium features such as glazed hardwood cabinetry, porcelain tile flooring and Corian® countertops that are worthy of our signature coach. The 42QD returns for 2013 along with the all-new 42GD quad slide with an incredibly large bathroom and a spacious mid-coach lounge with a 55" recessed LCD TV. Winnebago Industries® legendary SmartSpace™ design process ensures the integrity of everything you can and can't see, including the available "all electric" system that includes an induction cooktop and eliminates the need for LP. The 2013 Itasca Ellipse doesn't just look elegant, it is elegance come to life.

Why Ellipse?

- Unmatched performance of Maxum Chassis
- Two 42' floorplans
- Powered king bed with Ideal Rest® Natural Reserve digital comfort control mattress
- Polished porcelain tile floors
- Aqua-Hot® zone heating
- MCD American Duo® solar/blackout roller shades
- HDMI 4x4 Matrix offers HD input to all TVs
- Available All Electric Coach with induction range top
- Available Flexsteel® cab seats with heat/massage
- Premier clearcoat automotive finish



RECOGNIZED QUALITY The RV Dealers Association annually bestows the Quality Circle Award based on dealer ratings to manufacturers that provide exceptional products, service and support. Only one manufacturer has received this award for sixteen consecutive years: Winnebago Industries®, proud manufacturer of the Itasca Ellipse.



ON THE COVER: 42GD Platinum Full-Body Paint

42QD Coral Cove with Coffee-Glazed Forest Cherry Cabinetry

YOUR DREAM ON WHEELS

True elegance comes from within, which is why the Itasca Ellipse® starts with the Maxum® tag-axle chassis with lowered-rail construction, the world's best motor home foundation, featuring ZF™ Independent Front Suspension, a 450-hp Cummins® diesel engine and an incredible amount of pass-through storage. With that as our starting point, we select only premium features such as glazed hardwood cabinetry, porcelain tile flooring and Corian® countertops that are worthy of our signature coach. The 42QD returns for 2013 along with the all-new 42GD quad slide with an incredibly large bathroom and a spacious mid-coach lounge with a 55" recessed LCD TV. Winnebago Industries'® legendary SmartSpace™ design process ensures the integrity of everything you can and can't see, including the available "all electric" system that includes an induction cooktop and eliminates the need for LP. The 2013 Itasca Ellipse doesn't just look elegant, it is elegance come to life.

Why Ellipse?

- Unmatched performance of Maxum Chassis
- Two 42' floorplans
- Powered king bed with Ideal Rest® Natural Reserve digital comfort control mattress
- Polished porcelain tile floors
- Aqua-Hot® zone heating
- MCD American Duo® solar/blackout roller shades
- HDMI 4x4 Matrix offers HD input to all TVs
- Available All Electric Coach with induction range top
- Available Flexsteel® cab seats with heat/massage
- Premier clearcoat automotive finish



RECOGNIZED QUALITY The RV Dealers Association annually bestows the Quality Circle Award based on dealer ratings to manufacturers that provide exceptional products, service and support. Only one manufacturer has received this award for sixteen consecutive years: Winnebago Industries®, proud manufacturer of the Itasca Ellipse.

BEST IN CLASS

See how Winnebago Industries takes motor home design and function to the next level, and why we've earned the right to be called the Most Recognized Name in Motor Homes.®



Click on this icon throughout the brochure to link to more information on the web.



You will always have fresh, clean laundry throughout your travels when you select the **Washer and Dryer**.



Eliminate the need for LP by selecting the All Electric Coach option, featuring the quick-heating **Induction Stovetop**.



Day or night, the smoothly retracting **MCD American Duo® Solar/Blackout Roller Shades** give you total control of light and privacy levels.



Drawers open wide on **Full-Extension Drawer Slides** for maximum storage and easy access.

BEST IN CLASS

See how Winnebago Industries takes motor home design and function to the next level, and why we've earned the right to be called the Most Recognized Name in Motor Homes.®



Click on this icon throughout the brochure to link to more information on the web.



You will always have fresh, clean laundry throughout your travels when you select the **Washer and Dryer**.



Eliminate the need for LP by selecting the All Electric Coach option, featuring the quick-heating **Induction Stovetop**.



Day or night, the smoothly retracting **MCD American Duo® Solar/Blackout Roller Shades** give you total control of light and privacy levels.



Drawers open wide on **Full-Extension Drawer Slides** for maximum storage and easy access.



The **PowerLine® Energy Management System**, which minimizes tripped campground circuits in periods of high demand, is part of the **OnePlace® Systems Center** which places frequently used controls in one convenient location.



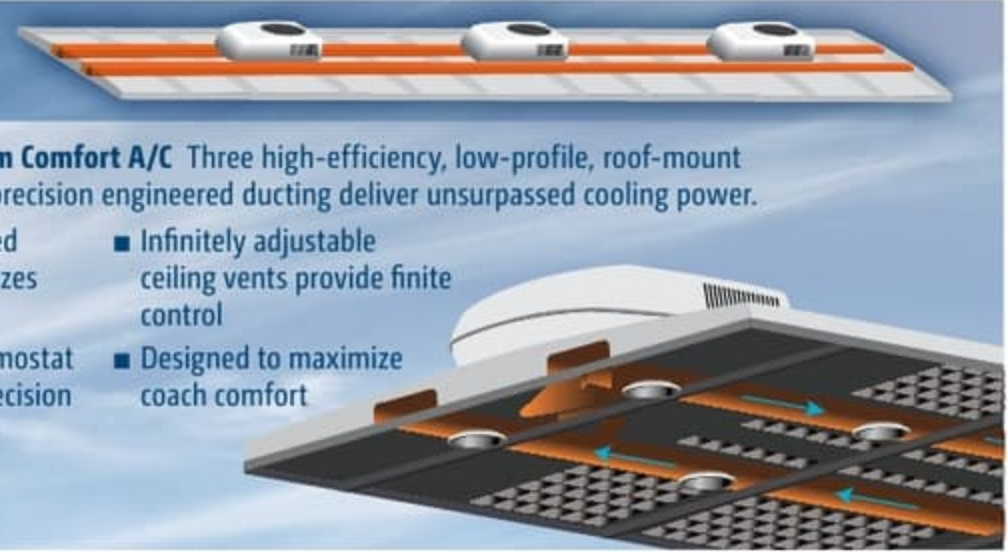
Watch HD video from multiple sources, on multiple TVs—simultaneously—with the **HDMI 4x4 Matrix Video Selection System**.

TRUEAIR



TrueAir® Maximum Comfort A/C Three high-efficiency, low-profile, roof-mount cooling units and precision engineered ducting deliver unsurpassed cooling power.

- D-shaped, formed ductwork optimizes airflow
- Triple-zone thermostat controls offer precision cooling
- No roof air condensation
- Infinitely adjustable ceiling vents provide finite control
- Designed to maximize coach comfort



The available **+Lounge** is a cab seat, a recliner and a personal workstation—all in one.



Kick back and relax in the Ultraleather™ **Euro Recliner** with built-in footrest.



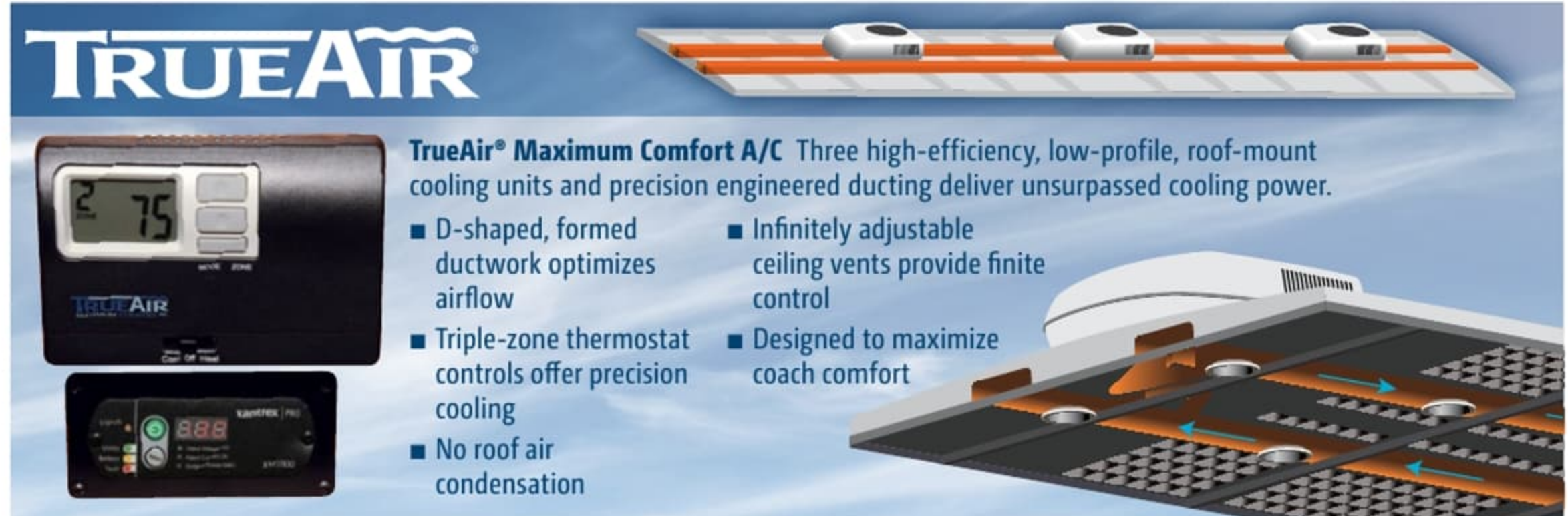
The available **Infotainment Center/GPS** has it all: CD player, MP3 input, outside temp, compass, turn-by-turn voice navigation and so much more.



The **PowerLine® Energy Management System**, which minimizes tripped campground circuits in periods of high demand, is part of the **OnePlace® Systems Center** which places frequently used controls in one convenient location.



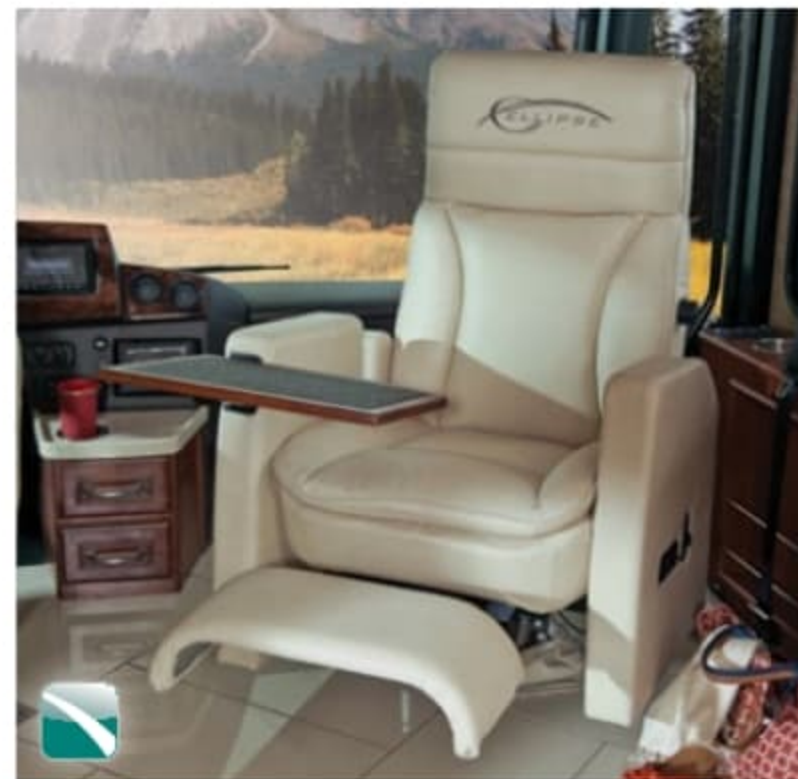
Watch HD video from multiple sources, on multiple TVs—simultaneously—with the **HDMI 4x4 Matrix Video Selection System**.



TRUEAIR

TrueAir® Maximum Comfort A/C Three high-efficiency, low-profile, roof-mount cooling units and precision engineered ducting deliver unsurpassed cooling power.

- D-shaped, formed ductwork optimizes airflow
- Triple-zone thermostat controls offer precision cooling
- No roof air condensation
- Infinitely adjustable ceiling vents provide finite control
- Designed to maximize coach comfort



The available **+Lounger** is a cab seat, a recliner and a personal workstation—all in one.



Kick back and relax in the Ultraleather™ **Euro Recliner** with built-in footrest.



The available **Infotainment Center/GPS** has it all: CD player, MP3 input, outside temp, compass, turn-by-turn voice navigation and so much more.



There is so much to love about the Ellipse, it's nice to be able to soak it all in from the comfort of the Rest Easy® extendable sectional sofa. From here you'll notice fine features such as MCD American Duo solar/blackout roller shades, accent lighting and the Blu-Ray® home theater sound system. Upgrade to the multi-functional +Lounger or the new, luxury Flexsteel cab seats. And, no matter the temperature outside, the TrueAir maximum comfort air conditioning and Aqua-Hot dual-zone heating system will keep you comfortable inside.





42QD Coral Cove with Coffee-Glazed Forest Cherry Cabinetry

There is so much to love about the Ellipse, it's nice to be able to soak it all in from the comfort of the Rest Easy® extendable sectional sofa. From here you'll notice fine features such as MCD American Duo solar/blackout roller shades, accent lighting and the Blu-Ray® home theater sound system. Upgrade to the multi-functional +Lounger or the new, luxury Flexsteel cab seats. And, no matter the temperature outside, the TrueAir maximum comfort air conditioning and Aqua-Hot dual-zone heating system will keep you comfortable inside.



Rest Easy Extendable Sectional Sofa



One look at the Corian solid-surface countertops, coffee-glazed cabinetry and stainless steel appliances and you know right away this is no ordinary kitchen. The residential French door refrigerator is a dream come true, and you can choose the All Electric Coach option to enjoy the energy-efficient and convenient induction range top. Pullout storage trays in select overhead kitchen cabinets maximize storage and ease of access.



42QD Kitchen



French Door Refrigerator



Pullout Storage Trays



Available Dishwasher

One look at the Corian solid-surface countertops, coffee-glazed cabinetry and stainless steel appliances and you know right away this is no ordinary kitchen. The residential French door refrigerator is a dream come true, and you can choose the All Electric Coach option to enjoy the energy-efficient and convenient induction range top. Pullout storage trays in select overhead kitchen cabinets maximize storage and ease of access.



42QD Kitchen



French Door Refrigerator



Pullout Storage Trays



Available Dishwasher



Pantry x2 Shelves with Hidden Drawers



Dirt Devil Central Vacuum

The Ellipse takes storage to the next level with easy-access pullouts in select upper cabinets and the clever **Pantry x2** multi-purpose pantry. Behind a solid-wood door you'll find rows for storing canned goods. Hidden behind that are still more storage drawers. Keep your Ellipse looking sparkling new with the Dirt Devil® Central Vacuum.



Pantry x2 Shelves with Hidden Drawers



Dirt Devil Central Vacuum

The Ellipse takes storage to the next level with easy-access pullouts in select upper cabinets and the clever **Pantry x2** multi-purpose pantry. Behind a solid-wood door you'll find rows for storing canned goods. Hidden behind that are still more storage drawers. Keep your Ellipse looking sparkling new with the Dirt Devil® Central Vacuum.

Your fabulous meals deserve the kind of fabulous setting you'll find in the extendable dining table/buffet. It quickly expands to seat four.



Extendable Dining Table | Buffet

Your fabulous meals deserve the kind of fabulous setting you'll find in the extendable dining table/buffet. It quickly expands to seat four.



Extendable Dining Table | Buffet



42QD Bedroom

The powered king bed lifts into perfect position at the press of a button for watching television or reading a book. It features the Ideal Rest® Natural Reserve digital comfort control mattress that allows you to adjust the firmness of each side of the bed independently. Natural bamboo and cotton fibers create a comfortable, hygienic sleep surface with a duo-firmness reversible insert for even more customizable comfort. Select the 42QD for a large private master bathroom with dual wardrobes and a mid-coach guest bathroom.



42QD Master Bathroom



42QD Wardrobes



42QD Bedroom

The powered king bed lifts into perfect position at the press of a button for watching television or reading a book. It features the Ideal Rest® Natural Reserve digital comfort control mattress that allows you to adjust the firmness of each side of the bed independently. Natural bamboo and cotton fibers create a comfortable, hygienic sleep surface with a duo-firmness reversible insert for even more customizable comfort. Select the 42QD for a large private master bathroom with dual wardrobes and a mid-coach guest bathroom.



42QD Master Bathroom



42QD Wardrobes



Dash

Feel the power and incredibly nimble performance of the Maxum Chassis every time you drive. Adjustable steering wheel, pedals and cab seats lend to the feeling that the Ellipse was custom built just for you. We pored over the details to ensure an unrivaled travel experience offering heated seats, power visor and the available Infotainment/GPS system. You'll wonder why you ever drove anything else.



Power Mirrors



MCD American Duo® Power Visor



Dash

Feel the power and incredibly nimble performance of the Maxum Chassis every time you drive. Adjustable steering wheel, pedals and cab seats lend to the feeling that the Ellipse was custom built just for you. We pored over the details to ensure an unrivaled travel experience offering heated seats, power visor and the available Infotainment/GPS system. You'll wonder why you ever drove anything else.



Power Mirrors



MCD American Duo® Power Visor

Your Ellipse will be the envy of the campground with its huge awning and enough storage to haul a grill, coolers and chairs for all your family and friends. The available 90" x 54" sliding storage tray slides out both sides of the coach and lets you access your gear with ease, including the available Norcold® portable refrigerator/freezer. An advanced service center with powered hose and cord reels, and a Quick Connect® hose nozzle makes hookups a snap. You can even keep hoses connected with the door shut thanks to the QuickPort® service connection hatch.



Exterior Entertainment Center



Exterior Service Center



Available 90" x 54" Sliding Storage Tray

Your Ellipse will be the envy of the campground with its huge awning and enough storage to haul a grill, coolers and chairs for all your family and friends. The available 90" x 54" sliding storage tray slides out both sides of the coach and lets you access your gear with ease, including the available Norcold® portable refrigerator/freezer. An advanced service center with powered hose and cord reels, and a Quick Connect® hose nozzle makes hookups a snap. You can even keep hoses connected with the door shut thanks to the QuickPort® service connection hatch.



Exterior Entertainment Center



Exterior Service Center



Available 90" x 54" Sliding Storage Tray

Fiberglass Roof The crowned, one-piece fiberglass roof is backed by a 10-year parts-and-labor roof skin warranty.

Thermo-Panel® Sidewalls By layering fiberglass and high-density block foam insulation with welded aluminum support structures, we create some of the industry's strongest, most durable and lightweight sidewalls.

E-Coating An electrodeposition coating helps protect critical steel components.

Embedded Steel Metal substructures embedded into the sidewall provide solid attachment points to keep cabinets and appliances mounted securely in place.

Laser-Cut Tubing Precision laser cutters create precise joints in structural steel that are stronger and require less welding.



Interlocking Joints Specially engineered interlocking joints connect the floor, sidewalls and roof where competitors often rely on simple screws to bear the weight.



Solid Framework Aluminum extruded in our own facility to our exacting standards creates an extremely strong and solid structural framework.

SUPER STRUCTURE

BUILT TO LAST

Every Ellipse is built to Winnebago Industries'® legendary SuperStructure construction standards. It's a process developed and refined over more than 50 years of building some of the strongest, most durable coaches in the industry.

Fiberglass Roof The crowned, one-piece fiberglass roof is backed by a 10-year parts-and-labor roof skin warranty.

Thermo-Panel® Sidewalls By layering fiberglass and high-density block foam insulation with welded aluminum support structures, we create some of the industry's strongest, most durable and lightweight sidewalls.

E-Coating An electrodeposition coating helps protect critical steel components.

Embedded Steel Metal substructures embedded into the sidewall provide solid attachment points to keep cabinets and appliances mounted securely in place.

Laser-Cut Tubing Precision laser cutters create precise joints in structural steel that are stronger and require less welding.



Interlocking Joints Specially engineered interlocking joints connect the floor, sidewalls and roof where competitors often rely on simple screws to bear the weight.



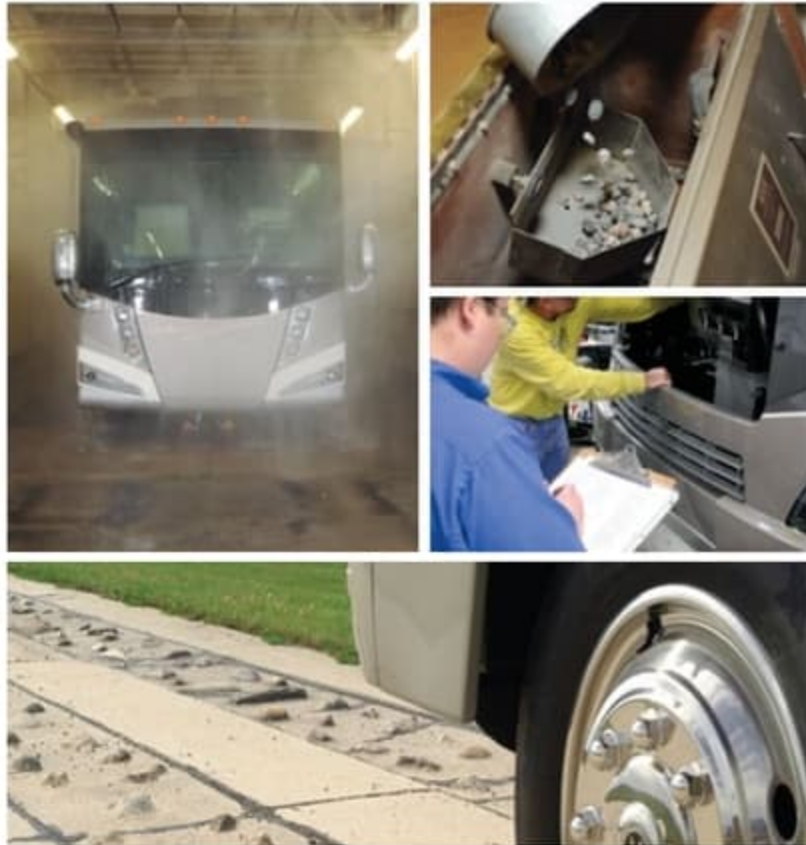
Solid Framework Aluminum extruded in our own facility to our exacting standards creates an extremely strong and solid structural framework.

SUPER STRUCTURE

BUILT TO LAST

Every Ellipse is built to Winnebago Industries'® legendary SuperStructure construction standards. It's a process developed and refined over more than 50 years of building some of the strongest, most durable coaches in the industry.

TESTING Before rolling out of our factories, every coach undergoes an extensive 113-point inspection. Each coach also passes a high-pressure water test that simulates rain at a rate of 50-inches per hour to check for leaks. During the design process, computer simulations, our physical testing center and rigorous test track ensure each model is built to last.



DETAILS At Winnebago Industries, we treat the features you can't see with the same care as the ones you can. Look in the access panels of some of our competitors' coaches and you'll see loose insulation and wires haphazardly strewn about. Winnebago Industries maintains a clean fit and finish throughout so your coach will last for the long haul.



BUILT IN-HOUSE We extrude our own aluminum. We rotocast our own plastic components. In fact, we manufacture most of our own parts so they are designed to fit the space, rather than fitting the space to an awkward off-the-shelf component size.



**SUPER
STRUCTURE**
BUILT TO LAST

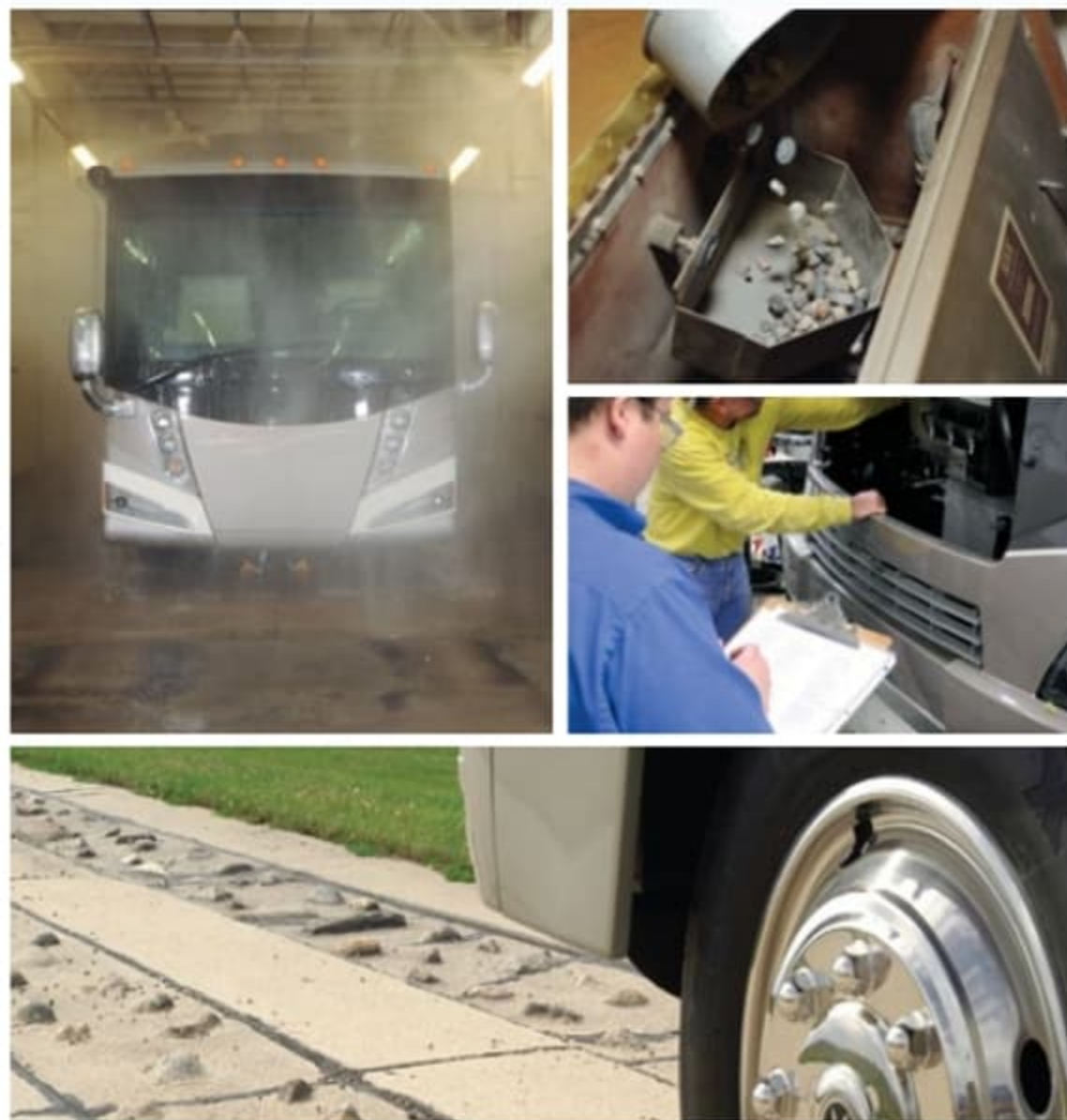
Visit BetterBuiltRVs.com to gain real insight into what goes into a Winnebago Industries motor home.

TAKE A TOUR We're proud of our processes, state-of-the-art facilities and the people who make Winnebago Industries number one. We invite you to visit our complex in Forest City, Iowa, for a first-hand look at the dedication and technology behind every motor home we build.



TESTING

Before rolling out of our factories, every coach undergoes an extensive 113-point inspection. Each coach also passes a high-pressure water test that simulates rain at a rate of 50-inches per hour to check for leaks. During the design process, computer simulations, our physical testing center and rigorous test track ensure each model is built to last.



DETAILS

At Winnebago Industries, we treat the features you can't see with the same care as the ones you can. Look in the access panels of some of our competitors' coaches and you'll see loose insulation and wires haphazardly strewn about. Winnebago Industries maintains a clean fit and finish throughout so your coach will last for the long haul.



BUILT IN-HOUSE

We extrude our own aluminum. We rotocast our own plastic components. In fact, we manufacture most of our own parts so they are designed to fit the space, rather than fitting the space to an awkward off-the-shelf component size.



**SUPER
STRUCTURE**
BUILT TO LAST

Visit BetterBuiltRVs.com to gain real insight into what goes into a Winnebago Industries motor home.

TAKE A TOUR

We're proud of our processes, state-of-the-art facilities and the people who make Winnebago Industries number one. We invite you to visit our complex in Forest City, Iowa, for a first-hand look at the dedication and technology behind every motor home we build.



3-point engine mounting reduces engine vibration.

Engine compression brake uses the engine to slow the coach, promoting longer brake life.

Allison® 3000 MH 6-speed automatic transmission includes a touchpad control for ease of use.

Rear axle incorporates proprietary gear machining for a smoother, quieter ride.

The lowered-rail design moves intrusive rails from storage areas, creating up to 199 cubic feet of storage.

ZF IFS front suspension and NeWay® rear air suspension provide superior ride and handling.

Taller, pass-through storage height accommodates bulky items.

MAXUM CHASSIS

15,000-lb. trailer hitch⁶

Extra space in critical areas allows for more pass-through storage.

Up to a 60° wheel cut provides a tighter turning radius and better maneuvering.

"Clean Air Diesel" 450-hp ISL Cummins® engine delivers hill-climbing power when you need it most.

Low frame rails create a lower center of gravity, improving stability.

Winnebago Industries' SuperStructure integrated with the lowered-rail design creates a chassis that is seven times stronger than typical raised-rail chassis designs.

Color-coded air lines make service easy.

A True Work of Art

You may not be able to see the Freightliner® Maxum Chassis as you're driving through the Rockies, but you'll know it's there. Its powerful Cummins turbo-charged diesel engine and Allison® transmission go to work so you don't have to sweat the peaks and valleys ahead.

Through a strong partnership with Freightliner, the undisputed leader in diesel motor home

chassis, we set a new standard for handling, ride and performance in diesel chassis design.

But performance doesn't mean sacrificing storage. The innovative lowered-rail design of the Maxum Chassis opens up a cavernous basement storage compartment, offering up to 199 cubic feet of storage.

Dual-fill fuel tank.

Michelin® tires and polished aluminum wheels look sharp.

4-wheel ABS anti-lock air brakes provide fast stopping power.

3-point engine mounting reduces engine vibration.

Engine compression brake uses the engine to slow the coach, promoting longer brake life.

Allison® 3000 MH 6-speed automatic transmission includes a touchpad control for ease of use.

Rear axle incorporates proprietary gear machining for a smoother, quieter ride.

The lowered-rail design moves intrusive rails from storage areas, creating up to 199 cubic feet of storage.

ZF IFS front suspension and NeWay® rear air suspension provide superior ride and handling.

MAXUM CHASSIS

15,000-lb. trailer hitch⁶

Taller, pass-through storage height accommodates bulky items.

Extra space in critical areas allows for more pass-through storage.

Up to a 60° wheel cut provides a tighter turning radius and better maneuvering.

"Clean Air Diesel" 450-hp ISL Cummins® engine delivers hill-climbing power when you need it most.

Low frame rails create a lower center of gravity, improving stability.

Winnebago Industries' SuperStructure integrated with the lowered-rail design creates a chassis that is seven times stronger than typical raised-rail chassis designs.

Color-coded air lines make service easy.

A True Work of Art

You may not be able to see the Freightliner® Maxum Chassis as you're driving through the Rockies, but you'll know it's there. Its powerful Cummins turbo-charged diesel engine and Allison® transmission go to work so you don't have to sweat the peaks and valleys ahead.

Through a strong partnership with Freightliner, the undisputed leader in diesel motor home

chassis, we set a new standard for handling, ride and performance in diesel chassis design.

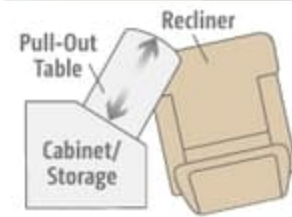
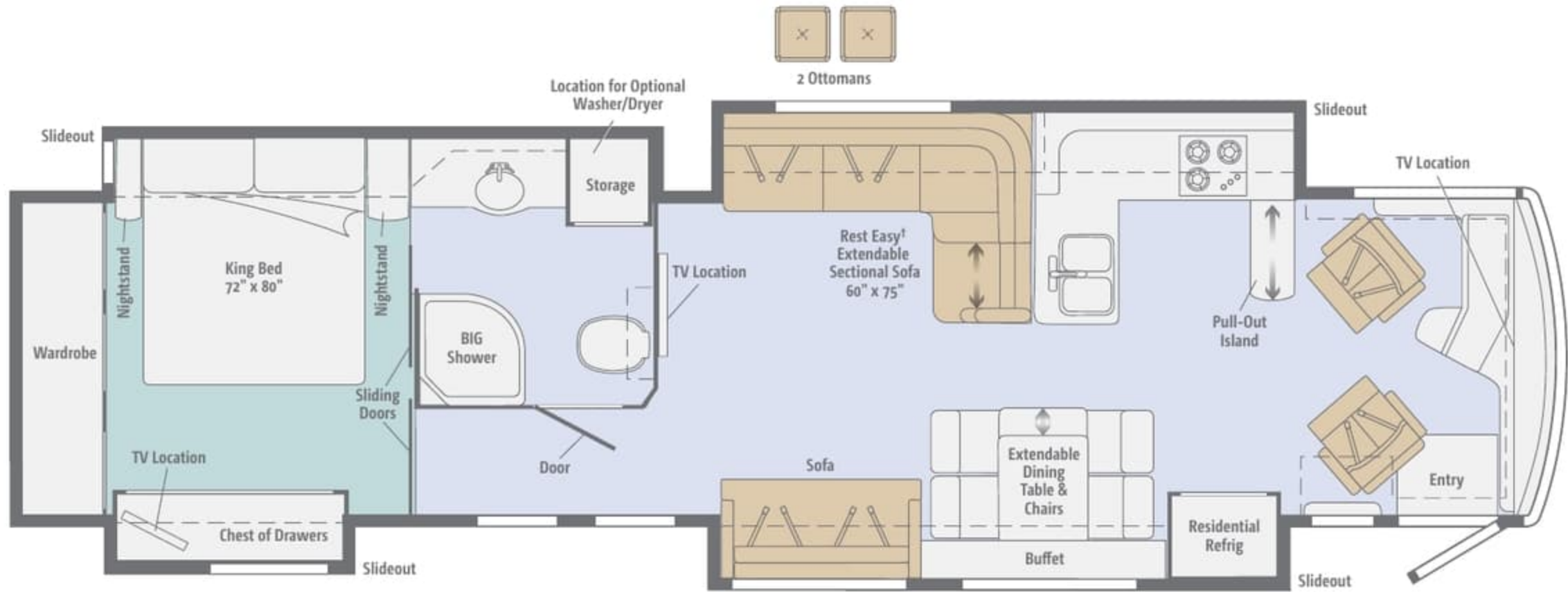
But performance doesn't mean sacrificing storage. The innovative lowered-rail design of the Maxum Chassis opens up a cavernous basement storage compartment, offering up to 199 cubic feet of storage.

Dual-fill fuel tank.

Michelin® tires and polished aluminum wheels look sharp.

4-wheel ABS anti-lock air brakes provide fast stopping power.

Dimensions shown are for sleeping space only and may vary due to styling differences. Dashed lines denote overhead storage areas. Floorplans and specifications are also available online at Goltasca.com.

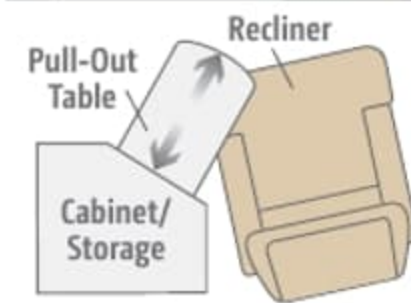
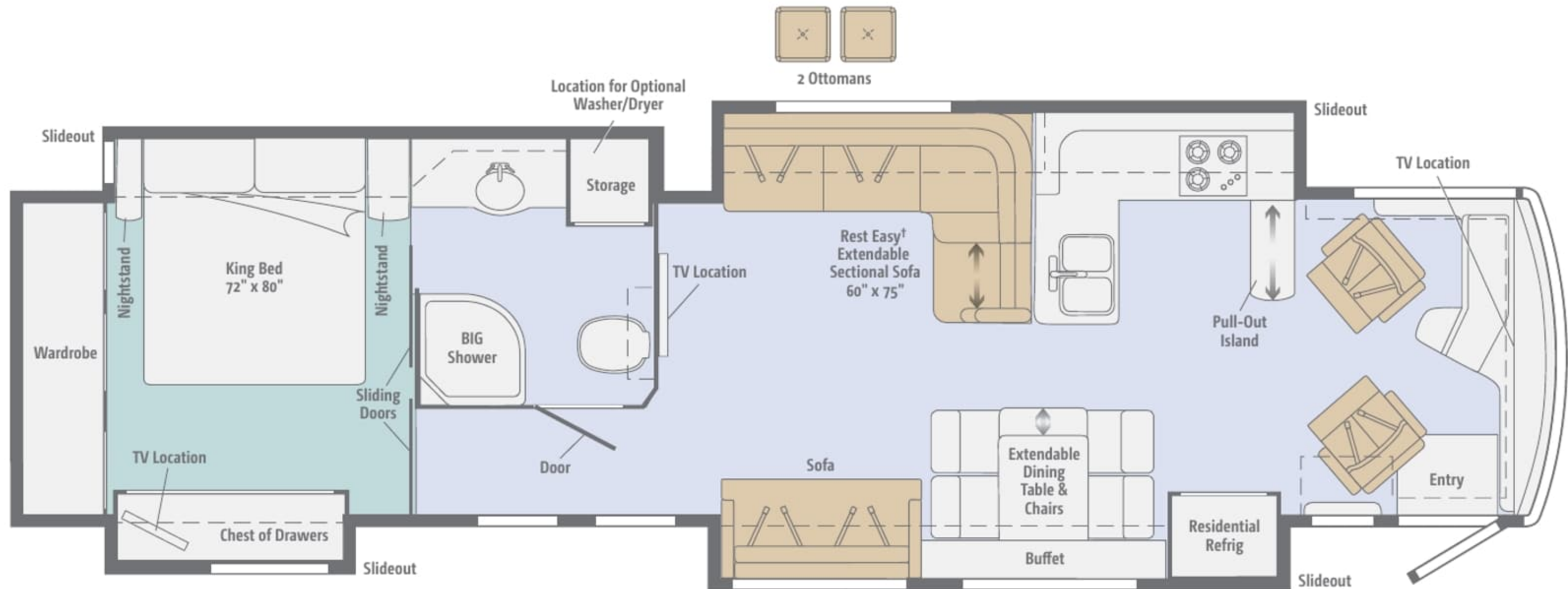


NEW 42GD

Four slideouts, an incredibly large bathroom, a forward galley and a spacious mid-coach living area with the Rest Easy extendable sectional sofa and 55" LCD TV provide a fresh take on luxury diesel floorplans.

† Available with single or dual controls. Dual-control option includes only two seat belts.

Dimensions shown are for sleeping space only and may vary due to styling differences. Dashed lines denote overhead storage areas. Floorplans and specifications are also available online at Goltasca.com.

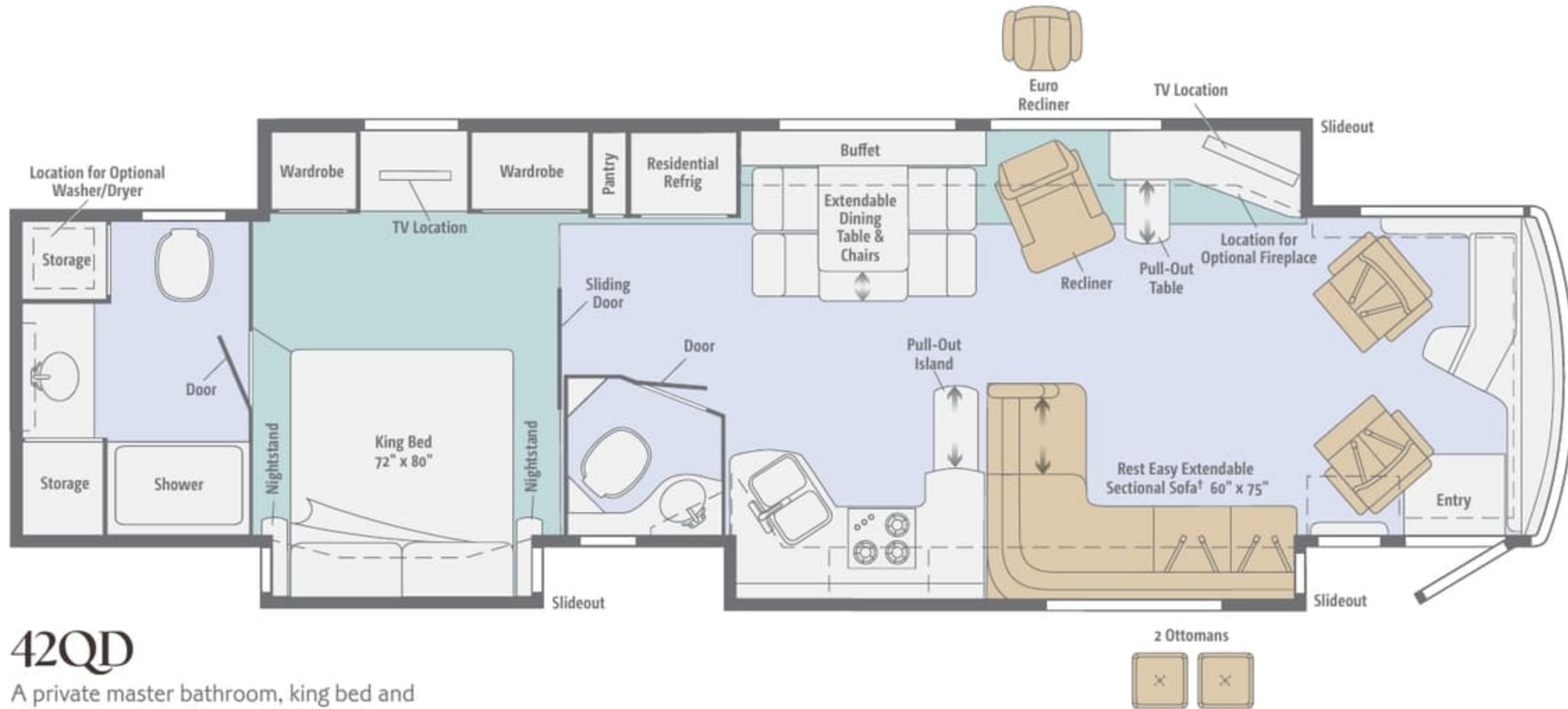


NEW 42GD

Four slideouts, an incredibly large bathroom, a forward galley and a spacious mid-coach living area with the Rest Easy extendable sectional sofa and 55\"/>

† Available with single or dual controls. Dual-control option includes only two seat belts.

Dimensions shown are for sleeping space only and may vary due to styling differences. Dashed lines denote overhead storage areas. Floorplans and specifications are also available online at Goltasca.com.



42QD

A private master bathroom, king bed and Ultraleather Rest Easy extendable sectional sofa set the stage for a life of luxury.

† Available with single or dual controls. Dual-control option includes only two seat belts.

Dimensions shown are for sleeping space only and may vary due to styling differences. Dashed lines denote overhead storage areas. Floorplans and specifications are also available online at Goltasca.com.



42QD

A private master bathroom, king bed and Ultraleather Rest Easy extendable sectional sofa set the stage for a life of luxury.

† Available with single or dual controls. Dual-control option includes only two seat belts.

Three fabric collections and three coffee-glazed cabinet wood choices with Brushed Nickel hardware and hidden hinges let you select your perfect interior. Ultraleather™ provides a luxurious, better-than-leather alternative that is extra soft, durable and easy to clean.

Affinity



Surfside Ultraleather



Accent



Bedspread



12" x 24" Polished
Porcelain Tile



Carpet



Fossil Corian Countertop



Lotus Silver Wall Board



Coffee-Glazed
Honey Cherry



Coffee-Glazed
Forest Cherry



Coffee-Glazed
Vienna Maple

Fabrics and carpets may change without notice or obligation.

Three fabric collections and three coffee-glazed cabinet wood choices with Brushed Nickel hardware and hidden hinges let you select your perfect interior. Ultraleather™ provides a luxurious, better-than-leather alternative that is extra soft, durable and easy to clean.

Affinity



Surfside Ultraleather



Accent



Bedspread



12" x 24" Polished
Porcelain Tile



Carpet



Fossil Corian Countertop



Lotus Silver Wall Board



Coffee-Glazed
Honey Cherry



Coffee-Glazed
Forest Cherry

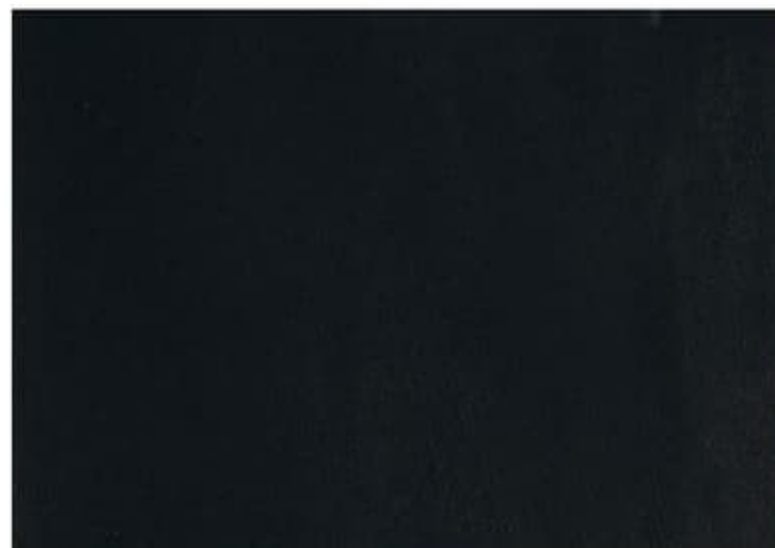


Coffee-Glazed
Vienna Maple

Fabrics and carpets may change without notice or obligation.

Three fabric collections and three coffee-glazed cabinet wood choices with Brushed Nickel hardware and hidden hinges let you select your perfect interior. Ultraleather™ provides a luxurious, better-than-leather alternative that is extra soft, durable and easy to clean.

Delmar



Black Onyx Ultraleather



Accent



Bedspread



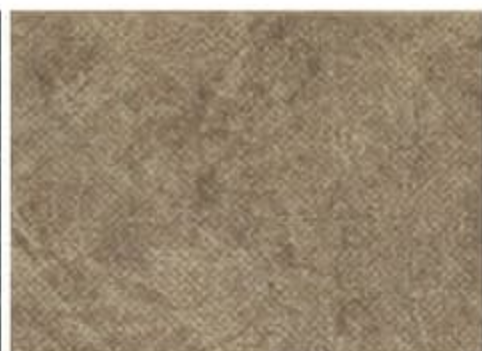
12" x 24" Polished
Porcelain Tile



Carpet



Night Sky Corian Countertop



Monroe Pecan Wall Board



Coffee-Glazed
Honey Cherry



Coffee-Glazed
Forest Cherry



Coffee-Glazed
Vienna Maple

Fabrics and carpets may change without notice or obligation.

Three fabric collections and three coffee-glazed cabinet wood choices with Brushed Nickel hardware and hidden hinges let you select your perfect interior. Ultraleather™ provides a luxurious, better-than-leather alternative that is extra soft, durable and easy to clean.

Delmar



Black Onyx Ultraleather



Accent



Bedsread



12" x 24" Polished
Porcelain Tile



Carpet



Night Sky Corian Countertop



Monroe Pecan Wall Board



Coffee-Glazed
Honey Cherry



Coffee-Glazed
Forest Cherry



Coffee-Glazed
Vienna Maple

Fabrics and carpets may change without notice or obligation.

Three fabric collections and three coffee-glazed cabinet wood choices with Brushed Nickel hardware and hidden hinges let you select your perfect interior. Ultraleather™ provides a luxurious, better-than-leather alternative that is extra soft, durable and easy to clean.

Coral Cove



Manilla Ultraleather



Accent



Bedspread



12" x 24" Polished
Porcelain Tile



Carpet



Fossil Corian Countertop



Waldorf Sierra Wall Board



Coffee-Glazed
Honey Cherry



Coffee-Glazed
Forest Cherry



Coffee-Glazed
Vienna Maple

Fabrics and carpets may change without notice or obligation.

Three fabric collections and three coffee-glazed cabinet wood choices with Brushed Nickel hardware and hidden hinges let you select your perfect interior. Ultraleather™ provides a luxurious, better-than-leather alternative that is extra soft, durable and easy to clean.

Coral Cove



Manilla Ultraleather



Accent



Bedsread



12" x 24" Polished
Porcelain Tile



Carpet



Fossil Corian Countertop



Waldorf Sierra Wall Board



Coffee-Glazed
Honey Cherry



Coffee-Glazed
Forest Cherry



Coffee-Glazed
Vienna Maple

Fabrics and carpets may change without notice or obligation.

The Ellipse has distinguished curb appeal thanks to a premier clearcoat automotive finish that brings a new level of depth and shine to the full-body paint design. A lower front protective mask safeguards the paint for years to come.



Kalahari
FULL-BODY PAINT



Sedona Bronze
FULL-BODY PAINT

The Ellipse has distinguished curb appeal thanks to a premier clearcoat automotive finish that brings a new level of depth and shine to the full-body paint design. A lower front protective mask safeguards the paint for years to come.



Kalahari
FULL-BODY PAINT



Sedona Bronze
FULL-BODY PAINT

The Ellipse has distinguished curb appeal thanks to a premier clearcoat automotive finish that brings a new level of depth and shine to the full-body paint design. A lower front protective mask safeguards the paint for years to come.



Platinum
FULL-BODY PAINT



Dark Cherry
FULL-BODY PAINT

The Ellipse has distinguished curb appeal thanks to a premier clearcoat automotive finish that brings a new level of depth and shine to the full-body paint design. A lower front protective mask safeguards the paint for years to come.



Platinum
FULL-BODY PAINT



Dark Cherry
FULL-BODY PAINT

The Ellipse has distinguished curb appeal thanks to a premier clearcoat automotive finish that brings a new level of depth and shine to the full-body paint design. A lower front protective mask safeguards the paint for years to come.



Sage
FULL-BODY PAINT



Shadow Gray
FULL-BODY PAINT

The Ellipse has distinguished curb appeal thanks to a premier clearcoat automotive finish that brings a new level of depth and shine to the full-body paint design. A lower front protective mask safeguards the paint for years to come.



Sage
FULL-BODY PAINT



Shadow Gray
FULL-BODY PAINT

Weights & Measures

	42GD	42QD
Length	42'10"	42'10"
Exterior Height ¹	12'11"	12'11"
Exterior Width ²	8'5.5"	8'5.5"
Exterior Storage ³ (cu. ft.)	181	199
Awning Length	20'	14'6"
Interior Height	7'	7'
Interior Width	8'0.5"	8'0.5"
Freshwater Capacity w/Heater ⁴ (gal.)	85	85
Water Heater Capacity	Continuous	Continuous
Holding Tank Capacity - Black/Gray ⁴ (gal.)	51/116	51/71
LP Capacity ⁵ (gal.)	28	28
Fuel Capacity (gal.)	150	150
GCWR ⁶ (lbs.)	59,600	59,600
GVWR (lbs.)	44,600	44,600
GAWR - Front (lbs.)	14,600	14,600
GAWR - Rear (lbs.)	30,000	30,000
Wheelbase	279" + tag	279" + tag

Maxum® Freightliner® Chassis

450-hp Cummins® ISL 8.9L turbo-charged diesel engine

Adjustable brake and accelerator pedals

Allison® 3000 MH 6-speed electronic transmission, engine compression brake

Information display center

ZF™ Independent Front Suspension, NeWay® rear suspension

160-amp. alternator

Air brakes w/ABS

Quick connect air accessory

Automatic leveling jacks w/3-position controls

Tow power package w/7-pin trailer wiring and I.P. wiring

Trailer Hitch® 15,000-lb. drawbar/1,500-lb. maximum vertical tongue weight

Stylized aluminum wheels

Cab Conveniences

Cab Seats adjustable armrests, adjustable lumbar support, multi-adjustable recline and six-way power pedestals

Heated driver seat

Heated, queen passenger seat

Passenger seat footrest

RV Radio®/Rearview Monitor System 6.5" LCD color touch screen, CD player w/remotes, weather band, clock, iPod®/MP3 input, rearview color camera w/one-way audio and sideview camera system

Tilt/telescoping SmartWheel™ steering wheel w/infinite adjustable column

Cruise control

Power door locks w/remote keyless entry

Electric adjustable mirrors w/defrost, sideview camera and turn signal light in lower glass

12-volt powerpoints

Powered stepwell cover

Two-speed built-in defroster fan

MCD American Duo® solar/blackout roller shades powered for windshield, manual for driver/passenger windows

Chassis/house battery radio power switch

Dual map lights

C.B. wire prep

Optional Equipment

Infotainment Center/GPS voice navigation, 7" LCD touch screen color monitor w/PIP, compass, outside temperature, handheld remote and steering wheel remote, AM/FM/CD/DVD radio, Bluetooth™, Sirius® satellite ready, iPod interface connector, passenger-side monitor, rear and sideview cameras

Sirius satellite radio w/iPod interface connector

+Lounger heated passenger seat w/flip-up workstation

Flexsteel® Luxury Cab Seats driver and queen passenger seat w/six-way power, power passenger footrest, heat and massage, remote swivel, power lumbar support, manual recline, adjustable armrests

Interior

40" LCD TV (front overhead 42GD, mid-coach 42QD)

55" LCD TV (mid-coach 42GD)

Blu-Ray® Home Theater Sound System CD/DVD player, iPhone®/iPod dock w/video, receiver, amplifier, 5 speakers and subwoofer

Digital HDTV amplified antenna system

Dirt Devil® central vacuum cleaner w/VacPan®

Key-activated slideroom master lock switch

HDMI 4x4 Matrix central video selection system

Satellite system ready (front and bedroom)

OnePlace® systems center

Tinted, dual-glazed, thermo-insulated coach windows

Soft vinyl ceiling

Powered roof vent (kitchen and bath)

MCD American Duo® solar/blackout roller shades

Accent lights above front overhead cabinets and ceiling trim

Optional Equipment

Stackable washer/dryer

King-Dome® in-motion satellite dish dual LNB, HD-ready (front and bedroom)

King-Dome automatic satellite dish antenna HD-ready (front and bedroom)

Winegard® Trav'ler® automatic multi-satellite antenna

Electric fireplace (42QD)

Kitchen

Corian® countertops, backsplash and sink covers

Stainless steel microwave/convection oven w/sensor cook and vented range fan

3-burner LP range top w/glass cover and storage below

Stainless steel refrigerator w/French doors freezer drawer, water and ice dispenser

Filtered cold-water

Optional Equipment

2-burner induction range top w/storage below (w/All Electric Coach option)

Stainless steel drawer-style dishwasher

Stainless steel microwave/speedcook oven w/exterior vented range fan

Bath

Corian countertop

Flexible showerhead

Area rug (master bath 42QD)

Moen Posi-Temp® shower valve

Textured glass shower door

Skylight

Porcelain toilet

Weights & Measures

	42GD	42QD
Length	42'10"	42'10"
Exterior Height¹	12'11"	12'11"
Exterior Width²	8'5.5"	8'5.5"
Exterior Storage³ (cu. ft.)	181	199
Awning Length	20'	14'6"
Interior Height	7'	7'
Interior Width	8'0.5"	8'0.5"
Freshwater Capacity w/Heater⁴ (gal.)	85	85
Water Heater Capacity	Continuous	Continuous
Holding Tank Capacity - Black/Gray⁴ (gal.)	51/116	51/71
LP Capacity⁵ (gal.)	28	28
Fuel Capacity (gal.)	150	150
GCWR⁶ (lbs.)	59,600	59,600
GVWR (lbs.)	44,600	44,600
GAWR - Front (lbs.)	14,600	14,600
GAWR - Rear (lbs.)	30,000	30,000
Wheelbase	279" + tag	279" + tag

Maxum® Freightliner® Chassis

- 450-hp Cummins® ISL 8.9L turbo-charged diesel engine
- Adjustable brake and accelerator pedals
- Allison® 3000 MH 6-speed electronic transmission, engine compression brake
- Information display center
- ZF™ Independent Front Suspension, NeWay® rear suspension
- 160-amp. alternator
- Air brakes w/ABS
- Quick connect air accessory
- Automatic leveling jacks w/3-position controls
- Tow power package w/7-pin trailer wiring and I.P. wiring
- Trailer Hitch⁶ 15,000-lb. drawbar/1,500-lb. maximum vertical tongue weight
- Stylized aluminum wheels

Cab Conveniences

- Cab Seats** adjustable armrests, adjustable lumbar support, multi-adjustable recline and six-way power pedestals
- Heated driver seat**
- Heated, queen passenger seat**
- Passenger seat footrest**
- RV Radio®/Rearview Monitor System** 6.5" LCD color touch screen, CD player w/remotes, weather band, clock, iPod®/MP3 input, rearview color camera w/one-way audio and sideview camera system
- Tilt/telescoping SmartWheel™ steering wheel w/infinite adjustable column**
- Cruise control**
- Power door locks w/remote keyless entry**
- Electric adjustable mirrors w/defrost, sideview camera and turn signal light in lower glass**
- 12-volt powerpoints**

- Powered stepwell cover**
- Two-speed built-in defroster fan**
- MCD American Duo® solar/blackout roller shades** powered for windshield, manual for driver/passenger windows
- Chassis/house battery radio power switch**
- Dual map lights**
- C.B. wire prep**

Optional Equipment

- Infotainment Center/GPS** voice navigation, 7" LCD touch screen color monitor w/PIP, compass, outside temperature, handheld remote and steering wheel remote, AM/FM/CD/DVD radio, Bluetooth™, Sirius® satellite ready, iPod interface connector, passenger-side monitor, rear and sideview cameras
- Sirius satellite radio w/iPod interface connector**
- +Lounge** heated passenger seat w/flip-up workstation
- Flexsteel® Luxury Cab Seats** driver and queen passenger seat w/six-way power, power passenger footrest, heat and massage, remote swivel, power lumbar support, manual recline, adjustable armrests

Interior

- 40" LCD TV** (front overhead 42GD, mid-coach 42QD)
- 55" LCD TV** (mid-coach 42GD)
- Blu-Ray® Home Theater Sound System** CD/DVD player, iPhone®/iPod dock w/video, receiver, amplifier, 5 speakers and subwoofer
- Digital HDTV amplified antenna system**
- Dirt Devil® central vacuum cleaner w/VacPan®**
- Key-activated slideroom master lock switch**
- HDMI 4x4 Matrix central video selection system**
- Satellite system ready** (front and bedroom)
- OnePlace® systems center**
- Tinted, dual-glazed, thermo-insulated coach windows**

- Soft vinyl ceiling**
- Powered roof vent** (kitchen and bath)
- MCD American Duo® solar/blackout roller shades**
- Accent lights** above front overhead cabinets and ceiling trim

Optional Equipment

- Stackable washer/dryer**
- King-Dome® in-motion satellite dish dual LNB, HD-ready** (front and bedroom)
- King-Dome automatic satellite dish antenna HD-ready** (front and bedroom)
- Winegard® Trav'ler® automatic multi-satellite antenna**
- Electric fireplace** (42QD)

Kitchen

- Corian® countertops, backsplash and sink covers**
- Stainless steel microwave/convection oven w/sensor cook and vented range fan**
- 3-burner LP range top w/glass cover and storage below**
- Stainless steel refrigerator w/French doors** freezer drawer, water and ice dispenser
- Filtered cold-water**

Optional Equipment

- 2-burner induction range top w/storage below** (w/All Electric Coach option)
- Stainless steel drawer-style dishwasher**
- Stainless steel microwave/speedcook oven w/exterior vented range fan**

Bath

- Corian countertop**
- Flexible showerhead**
- Area rug** (master bath 42QD)
- Moen Posi-Temp® shower valve**
- Textured glass shower door**
- Skylight**
- Porcelain toilet**

Bedroom

26" LCD TV (42QD)

32" LCD TV (42GD)

Ceiling fan

Powered king bed w/Ideal Rest® Natural Reserve digital comfort control mattress and remote controls

Bedsread, pillows and shams

Headboard

Optional Equipment

Porcelain tile flooring (bedroom)

Exterior

Auxiliary docking lamps

Driver-side service bay light

Powered acrylic patio awning w/wind sensor

Powered acrylic entrance awning

Acrylic window awnings

KeyOne™ lock system

Lighted storage compartments

4 storage containers w/lids

7' folding stepladder

Porch and stepwell light

Automatic entrance steps

Rear ladder

Lower front protective mask

Premier clearcoat automotive finish

Rear mud flaps

Full-width rear mudguard

Polished stainless steel on lower valance doors and panels

Optional Equipment

Entertainment Center 32" LCD TV, stereo w/ remote, HDMI connection, audio out jack, TV jack, power outlets

90" x 54" slideout storage compartment tray (extends out either side of coach)

Norcold® portable refrigerator/freezer on slideout tray

Heating & Cooling System

TrueAir® Maximum Comfort A/C three 13,500 BTU low-profile roof air conditioners w/two heat pumps and three condensation pumps

Aqua-Hot® 450 hydronic triple-zone heating system w/continuous hot water

Electrical System

Service Center lighted, 120V AC power, cable input, power cord, QuickPort® service connection hatch

PowerLine® Energy Management System

Auxiliary start circuit

50-amp. power cord

Power cord reel

Exterior TV jack and AC duplex receptacle

2,800-watt inverter/converter/charger w/ remote panel

10,000-watt Cummins Onan® Quiet Diesel™ generator

Powered generator slideout mechanism

AC/DC electrical distribution system

6 maintenance-free AGM (Absorbed Glass Mat) sealed batteries

Battery disconnect system (coach and chassis)

Automatic dual-battery charge control

Shoreline/generator automatic changeover switch w/Surge Guard® Plus

Chassis battery charger/maintainer

Automatic generator start system

Optional Equipment

All Electric Coach replaces LP range top w/ induction range top; LP tank and all components are removed and replaced w/additional storage

100-watt solar panel battery charger

Plumbing System

Service Center lighted, monitor panel, pressurized city water hookup w/diverter fill, fresh water drain, drainage valves, exterior wash station w/pump switch, glove holder, holding-tank flushing system, paper towel holder, portable satellite dish hookup, 20' sewer hose w/ QuickConnect®, QuickPort, soap dispenser

Water supply hose w/reel

TrueLevel™ holding-tank monitoring system

Full-coach water filtration system

Permanent-mount LP tank w/gauge (NA with All Electric Coach option)

LPG accessory connection (patio area) (NA with All Electric Coach option)

On-demand water pump

Winterization Package water heater bypass valve and siphon tube

Heated holding-tank compartment

Safety

Seat belts

LP, smoke and carbon monoxide detectors

10 BC fire extinguisher

Ground fault interrupter

Daytime running lamps

Fog lamps

High-mount brake lamps

Warranty⁷

12-month/15,000-mile basic warranty⁸

36-month/36,000-mile limited warranty on structure⁸

10-year limited parts and labor warranty on roof skin⁸

- 1 The height of each model is measured to the top of the tallest standard feature and is based on the curb weight of a typically equipped unit. The actual height of your vehicle may vary by several inches depending on chassis or equipment variations. Please contact your dealer for further information.
- 2 Ellipse floorplans feature a wide-body design—over 96". In making your purchase decision, you should be aware that some states restrict access on some or all state roads to 96" in body width. Before making your purchase decision, you should confirm the road usage laws in the states of interest to you.
- 3 The load capacity of your motor home is designated by weight, not by volume, so you cannot necessarily use all available space when loading your motor home.
- 4 Capacities are based on measurements prior to tank installation. Slight capacity variations can result due to installation applications.
- 5 Capacities shown are tank manufacturer's listed water capacity (W.C.). Actual filled LP capacity is 80% of listing due to overfilling prevention device on tank.
- 6 Actual towing capacity is dependent on your particular loading and towing circumstances which includes the GVWR, GAWR, and GCWR, as well as adequate trailer brakes. Please refer to the Operator's Manual of your vehicle for further towing information.
- 7 See separate chassis warranty.
- 8 See your dealer for complete warranty information.

NA Not Available

Not all items available in combination. See dealer for details.

Winnebago Industries™ continuing program of product improvement makes specifications, equipment, model availability, and prices subject to change without notice. Comparisons to other motor homes are based on the most recent information available at printing.

Bedroom

26" LCD TV (42QD)

32" LCD TV (42GD)

Ceiling fan

Powered king bed w/Ideal Rest® Natural Reserve digital comfort control mattress and remote controls

Bedsread, pillows and shams

Headboard

Optional Equipment

Porcelain tile flooring (bedroom)

Exterior

Auxiliary docking lamps

Driver-side service bay light

Powered acrylic patio awning w/wind sensor

Powered acrylic entrance awning

Acrylic window awnings

KeyOne™ lock system

Lighted storage compartments

4 storage containers w/lids

7' folding stepladder

Porch and stepwell light

Automatic entrance steps

Rear ladder

Lower front protective mask

Premier clearcoat automotive finish

Rear mud flaps

Full-width rear mudguard

Polished stainless steel on lower valance doors and panels

Optional Equipment

Entertainment Center 32" LCD TV, stereo w/ remote, HDMI connection, audio out jack, TV jack, power outlets

90" x 54" slideout storage compartment tray (extends out either side of coach)

Norcold® portable refrigerator/freezer on slideout tray

Heating & Cooling System

TrueAir® Maximum Comfort A/C three 13,500 BTU low-profile roof air conditioners w/two heat pumps and three condensation pumps

Aqua-Hot® 450 hydronic triple-zone heating system w/continuous hot water

Electrical System

Service Center lighted, 120V AC power, cable input, power cord, QuickPort® service connection hatch

PowerLine® Energy Management System

Auxiliary start circuit

50-amp. power cord

Power cord reel

Exterior TV jack and AC duplex receptacle

2,800-watt inverter/converter/charger w/ remote panel

10,000-watt Cummins Onan® Quiet Diesel™ generator

Powered generator slideout mechanism

AC/DC electrical distribution system

6 maintenance-free AGM (Absorbed Glass Mat) sealed batteries

Battery disconnect system (coach and chassis)

Automatic dual-battery charge control

Shoreline/generator automatic changeover switch w/Surge Guard® Plus

Chassis battery charger/maintainer

Automatic generator start system

Optional Equipment

All Electric Coach replaces LP range top w/ induction range top; LP tank and all components are removed and replaced w/additional storage

100-watt solar panel battery charger

Plumbing System

Service Center lighted, monitor panel, pressurized city water hookup w/diverter fill, fresh water drain, drainage valves, exterior wash station w/pump switch, glove holder, holding-tank flushing system, paper towel holder, portable satellite dish hookup, 20' sewer hose w/ QuickConnect®, QuickPort, soap dispenser

Water supply hose w/reel

TrueLevel™ holding-tank monitoring system

Full-coach water filtration system

Permanent-mount LP tank w/gauge (NA with All Electric Coach option)

LPG accessory connection (patio area) (NA with All Electric Coach option)

On-demand water pump

Winterization Package water heater bypass valve and siphon tube

Heated holding-tank compartment

Safety

Seat belts

LP, smoke and carbon monoxide detectors

10 BC fire extinguisher

Ground fault interrupter

Daytime running lamps

Fog lamps

High-mount brake lamps

Warranty⁷

12-month/15,000-mile basic warranty⁸

36-month/36,000-mile limited warranty on structure⁸

10-year limited parts and labor warranty on roof skin⁸

- 1 The height of each model is measured to the top of the tallest standard feature and is based on the curb weight of a typically equipped unit. The actual height of your vehicle may vary by several inches depending on chassis or equipment variations. Please contact your dealer for further information.
- 2 Ellipse floorplans feature a wide-body design—over 96" in making your purchase decision, you should be aware that some states restrict access on some or all state roads to 96" in body width. Before making your purchase decision, you should confirm the road usage laws in the states of interest to you.
- 3 The load capacity of your motor home is designated by weight, not by volume, so you cannot necessarily use all available space when loading your motor home.
- 4 Capacities are based on measurements prior to tank installation. Slight capacity variations can result due to installation applications.
- 5 Capacities shown are tank manufacturer's listed water capacity (W.C.). Actual filled LP capacity is 80% of listing due to overfilling prevention device on tank.
- 6 Actual towing capacity is dependent on your particular loading and towing circumstances which includes the GVWR, GAWR, and GCWR, as well as adequate trailer brakes. Please refer to the Operator's Manual of your vehicle for further towing information.
- 7 See separate chassis warranty.
- 8 See your dealer for complete warranty information.

NA Not Available

Not all items available in combination. See dealer for details.

Winnebago Industries® continuing program of product improvement makes specifications, equipment, model availability, and prices subject to change without notice. Comparisons to other motor homes are based on the most recent information available at printing.

GOITASCA.COM HAS GONE MOBILE



Learn more about the 2013 Ellipse on your computer, smartphone or tablet. Visit GoItasca.com/Ellipse for the complete Ellipse experience.

PREFERRED CARE PROGRAM

We back our motor homes with best-in-class support both before and after the sale:

- 12-month/15,000-mile basic limited warranty
- 36-month/36,000-mile warranty on structure
- 10-year standard limited parts-and-labor roof skin warranty
- Complimentary 24-hour roadside assistance program



TRIP Saver
FAST TRACK PARTS

- TripSaver® Fast Track Parts guarantees that in-stock warranty parts ship directly to your dealer within 24 hours
- National dealer service network



Premium
ROADSIDE ASSISTANCE

JOIN THE CLUB, JOIN THE FUN

As an Itasca motor home owner, you are invited to join the WIT Club. It's a great way to take full advantage of your new coach and meet fun-loving WIT Club members from across the country who make motor home adventures a way of life.



Members enjoy:

- Caravans and rallies
- Newsletters
- Local and state group activities
- RV travel benefits

For more information, visit WITclub.com.



Grand National Rally

Each year, thousands of Winnebago Industries motor home owners descend upon Forest City, Iowa, for the Grand National Rally. Rally goes connect with old friends and enjoy concerts, tours, activities and more in a weeklong celebration of the motor home lifestyle. Join us this July for a week you'll never forget.



GOITASCA.COM HAS GONE MOBILE



Learn more about the 2013 Ellipse on your computer, smartphone or tablet. Visit GoItasca.com/Ellipse for the complete Ellipse experience.

PREFERRED CARE PROGRAM

We back our motor homes with best-in-class support both before and after the sale:

- 12-month/15,000-mile basic limited warranty
- 36-month/36,000-mile warranty on structure
- 10-year standard limited parts-and-labor roof skin warranty
- Complimentary 24-hour roadside assistance program



TRIP Saver
FAST TRACK PARTS

- TripSaver® Fast Track Parts guarantees that in-stock warranty parts ship directly to your dealer within 24 hours
- National dealer service network



Premium
ROADSIDE ASSISTANCE

JOIN THE CLUB, JOIN THE FUN

As an Itasca motor home owner, you are invited to join the WIT Club. It's a great way to take full advantage of your new coach and meet fun-loving WIT Club members from across the country who make motor home adventures a way of life.



Members enjoy:

- Caravans and rallies
- Newsletters
- Local and state group activities
- RV travel benefits

For more information, visit WITclub.com.



Grand National Rally

Each year, thousands of Winnebago Industries motor home owners descend upon Forest City, Iowa, for the Grand National Rally. Rally goers connect with old friends and enjoy concerts, tours, activities and more in a weeklong celebration of the motor home lifestyle. Join us this July for a week you'll never forget.

