

Era

2013



CLICK TO NAVIGATE

[Overview](#)

[Lounge](#)

[Bed](#)

[Exterior](#)

[Floorplans](#)

[Graphics](#)

[WIT Club](#)

[Features](#)

[Galley](#)

[Cab](#)

[Construction](#)

[Interior Décor](#)

[Specifications](#)

[Warranty](#)

Era

2013



CLICK TO NAVIGATE

[Overview](#)

[Lounge](#)

[Bed](#)

[Exterior](#)

[Floorplans](#)

[Graphics](#)

[WIT Club](#)

[Features](#)

[Galley](#)

[Cab](#)

[Construction](#)

[Interior Décor](#)

[Specifications](#)

[Warranty](#)



ON THE COVER: 70A Silverstone Graphics

70A Balance with Café Cherry Cabinetry

AHEAD OF ITS CLASS

The Class B market has rallied around the Mercedes-Benz® Sprinter diesel chassis and Winnebago Industries® builds more Sprinter-based RVs than any other manufacturer. Because of this experience, the extremely nimble and fuel-efficient Era® is head and shoulders above typical Class B offerings. This fully-equipped motor home comes loaded with the features and livability only Winnebago Industries' legendary RV design and Mercedes-Benz automotive luxury can deliver. You could spend thousands more on a Roadtrek® but you can't match the features, performance and quality construction of the 2013 Era.

WHY ERA?

- Mercedes-Benz Sprinter diesel chassis
- Impressive fuel economy
- 11,030-lb. GVWR
- MCD American Solo® blackout roller shades
- Full-featured galley with Corian® countertops
- Touch screen RV Radio®/rearview monitor
- LED lighting
- Thousands less than Roadtrek



Recognized Quality The RV Dealers Association bestows its annual Quality Circle Award based on dealer ratings to the manufacturers that provide exceptional products, service and support. Only one manufacturer has received this honor for sixteen consecutive years: Winnebago Industries®



ON THE COVER: 70A Silverstone Graphics

70A Balance with Café Cherry Cabinetry

AHEAD OF ITS CLASS

The Class B market has rallied around the Mercedes-Benz® Sprinter diesel chassis and Winnebago Industries® builds more Sprinter-based RVs than any other manufacturer. Because of this experience, the extremely nimble and fuel-efficient Era® is head and shoulders above typical Class B offerings. This fully-equipped motor home comes loaded with the features and livability only Winnebago Industries' legendary RV design and Mercedes-Benz automotive luxury can deliver. You could spend thousands more on a Roadtrek® but you can't match the features, performance and quality construction of the 2013 Era.

WHY ERA?

- Mercedes-Benz Sprinter diesel chassis
- Impressive fuel economy
- 11,030-lb. GVWR
- MCD American Solo® blackout roller shades
- Full-featured galley with Corian® countertops
- Touch screen RV Radio®/rearview monitor
- LED lighting
- Thousands less than Roadtrek



Recognized Quality The RV Dealers Association bestows its annual Quality Circle Award based on dealer ratings to the manufacturers that provide exceptional products, service and support. Only one manufacturer has received this honor for sixteen consecutive years: Winnebago Industries.®



Drawers open wide on full-extension drawer slides.



The LCD TV in the 70A swivels for viewing indoors or outdoors while sitting under the awning.



The second row passenger seat in the 70X can be replaced with a wardrobe cabinet, if you prefer the extra storage.



A large storage area with pullout tray beneath the Flex Bed in the 70A lets you transport large, bulky items.



Both models pack a surprising amount of storage, such as this wardrobe in the 70A.



The bi-fold bathroom doors open wide for easy access, yet leave the aisle clear even when open.



This handy dispenser mounted in the shower holds your soap, shampoo and conditioner.



Add the Infotainment Center/GPS for turn-by-turn voice directions and an interactive touch screen with compass, exterior temperature and Bluetooth capability.



Drawers open wide on full-extension drawer slides.



The LCD TV in the 70A swivels for viewing indoors or outdoors while sitting under the awning.



The second row passenger seat in the 70X can be replaced with a wardrobe cabinet, if you prefer the extra storage.



A large storage area with pullout tray beneath the Flex Bed in the 70A lets you transport large, bulky items.



Add the Infotainment Center/GPS for turn-by-turn voice directions and an interactive touch screen with compass, exterior temperature and Bluetooth capability.



Both models pack a surprising amount of storage, such as this wardrobe in the 70A.



The bi-fold bathroom doors open wide for easy access, yet leave the aisle clear even when open.



This handy dispenser mounted in the shower holds your soap, shampoo and conditioner.



70A Balance with Café Cherry Cabinetry

You won't find a more thoughtfully planned interior than in the Era. With features neatly positioned to maximize space, you'll find room for four Ultraleather™ captain's chairs that swivel to face the movable table in the 70X—perfect for dinner or a pleasant game of cards. The 70X even includes a powered sofa/bed so you can stretch out and watch the LCD TV. A 13,500 BTU high-efficiency air conditioner with heat pump keeps you comfortable year round.



70X Metro with Café Cherry Cabinetry



70A Balance with Café Cherry Cabinetry

You won't find a more thoughtfully planned interior than in the Era. With features neatly positioned to maximize space, you'll find room for four Ultraleather™ captain's chairs that swivel to face the movable table in the 70X—perfect for dinner or a pleasant game of cards. The 70X even includes a powered sofa/bed so you can stretch out and watch the LCD TV. A 13,500 BTU high-efficiency air conditioner with heat pump keeps you comfortable year round.



70X Metro with Café Cherry Cabinetry



70X Metro with Café Cherry Cabinetry



Sink and Range with Flip-Up Covers

When space is at a premium, our SmartSpace™ design philosophy ensures you have the features you demand while maintaining valuable living space. In the galley, this means employing a faucet that folds down beneath a flip-up glass cover to increase your countertop space and selecting a microwave and refrigerator that conserve space and energy.



70X Metro with Café Cherry Cabinetry



Sink and Range with Flip-Up Covers

When space is at a premium, our SmartSpace™ design philosophy ensures you have the features you demand while maintaining valuable living space. In the galley, this means employing a faucet that folds down beneath a flip-up glass cover to increase your countertop space and selecting a microwave and refrigerator that conserve space and energy.



70X Sofa/Bed

In the 70X, a power sofa/bed in the rear of the motor home offers three belted seating positions and folds down into a large, comfortable bed at the press of a button.



70A Flex Bed System

For the ultimate flexibility on the road, the 70A comes standard with the Flex Bed system. In just a few short steps, two twin beds in the bedroom become one giant queen bed.



70X Sofa/Bed

In the 70X, a power sofa/bed in the rear of the motor home offers three belted seating positions and folds down into a large, comfortable bed at the press of a button.



70A Flex Bed System

For the ultimate flexibility on the road, the 70A comes standard with the Flex Bed system. In just a few short steps, two twin beds in the bedroom become one giant queen bed.



Dash

The joy of a Class B motor home is being able to drive it almost anywhere you can drive a car. The Ultraleather cab seats make for a pleasant ride, especially when you're cranking your favorite tunes on the RV Radio. It plays CDs, offers a dedicated weather band and features a touch screen control panel, which incorporates the rearview monitor for safer backing and maneuvering. Available upgrades include the Sirius® Satellite radio system and the Infotainment Center with GPS (shown here) with a 7" LCD touch screen, voice guidance and Bluetooth compatibility.



The joy of a Class B motor home is being able to drive it almost anywhere you can drive a car. The Ultraleather cab seats make for a pleasant ride, especially when you're cranking your favorite tunes on the RV Radio. It plays CDs, offers a dedicated weather band and features a touch screen control panel, which incorporates the rearview monitor for safer backing and maneuvering. Available upgrades include the Sirius® Satellite radio system and the Infotainment Center with GPS (shown here) with a 7" LCD touch screen, voice guidance and Bluetooth compatibility.



70A Doors Open 270° with Pullout Tray

A patio awning comes standard so the fun starts whenever and wherever you park. And, with rear doors that swing open 270°, you can accommodate large or bulky items. The 70A even includes a rear pullout storage tray.



Patio Awning



70A Doors Open 270° with Pullout Tray

A patio awning comes standard so the fun starts whenever and wherever you park. And, with rear doors that swing open 270°, you can accommodate large or bulky items. The 70A even includes a rear pullout storage tray.



Patio Awning

TESTING Before rolling out of our factories, every coach undergoes an extensive 113-point inspection. Each coach also passes a high-pressure water test that simulates rain at a rate of 50-inches per hour to check for leaks. During the design process, computer simulations, our physical testing center and rigorous test track ensure each model is built to last.



DETAILS At Winnebago Industries, we treat the features you can't see with the same care as the ones you can. Look in the access panels of some of our competitors' coaches and you'll see loose insulation and wires haphazardly strewn about. Winnebago Industries maintains a clean fit and finish throughout so your coach will last for the long haul.



Visit BetterBuiltRVs.com to gain real insight into what goes into a Winnebago Industries motor home.

TAKE A TOUR We're proud of our processes, state-of-the-art facilities and the people who make Winnebago Industries number one. We invite you to visit our complex in Forest City, Iowa, for a first-hand look at the dedication and technology behind every motor home we build.



TESTING Before rolling out of our factories, every coach undergoes an extensive 113-point inspection. Each coach also passes a high-pressure water test that simulates rain at a rate of 50-inches per hour to check for leaks. During the design process, computer simulations, our physical testing center and rigorous test track ensure each model is built to last.



DETAILS At Winnebago Industries, we treat the features you can't see with the same care as the ones you can. Look in the access panels of some of our competitors' coaches and you'll see loose insulation and wires haphazardly strewn about. Winnebago Industries maintains a clean fit and finish throughout so your coach will last for the long haul.

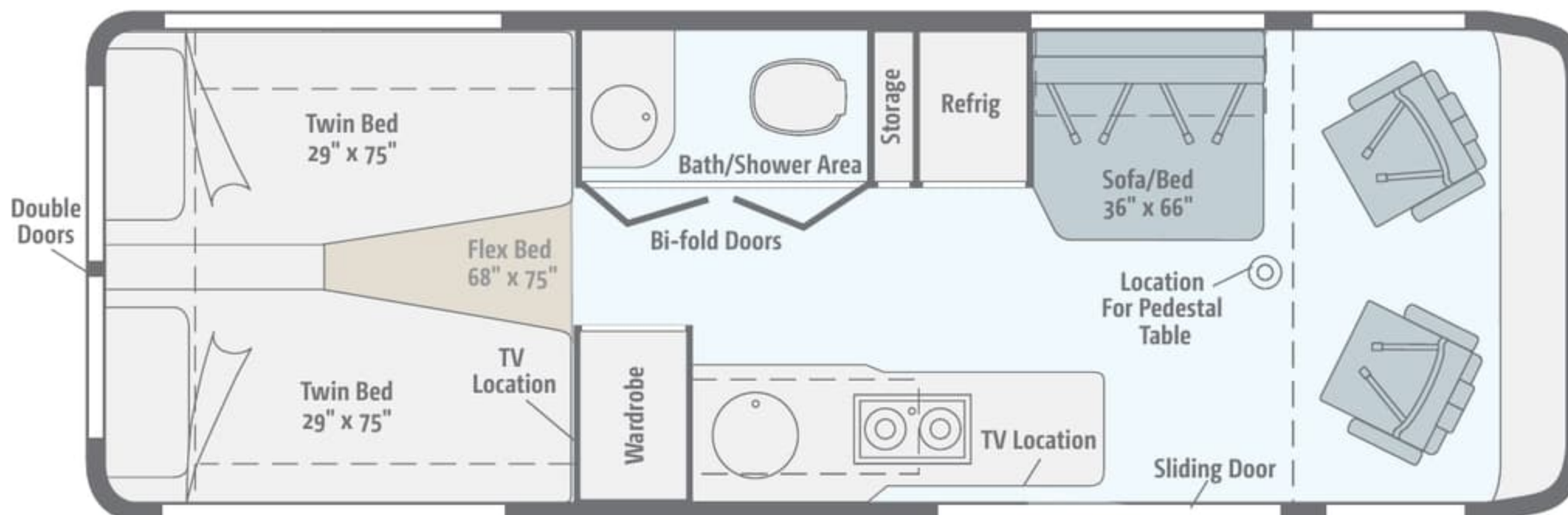


Visit BetterBuiltRVs.com to gain real insight into what goes into a Winnebago Industries motor home.

TAKE A TOUR We're proud of our processes, state-of-the-art facilities and the people who make Winnebago Industries number one. We invite you to visit our complex in Forest City, Iowa, for a first-hand look at the dedication and technology behind every motor home we build.



Dimensions shown are for sleeping space only and may vary due to styling differences. Dashed lines denote overhead storage areas. Floorplans and specifications are also available online at EraRV.com.



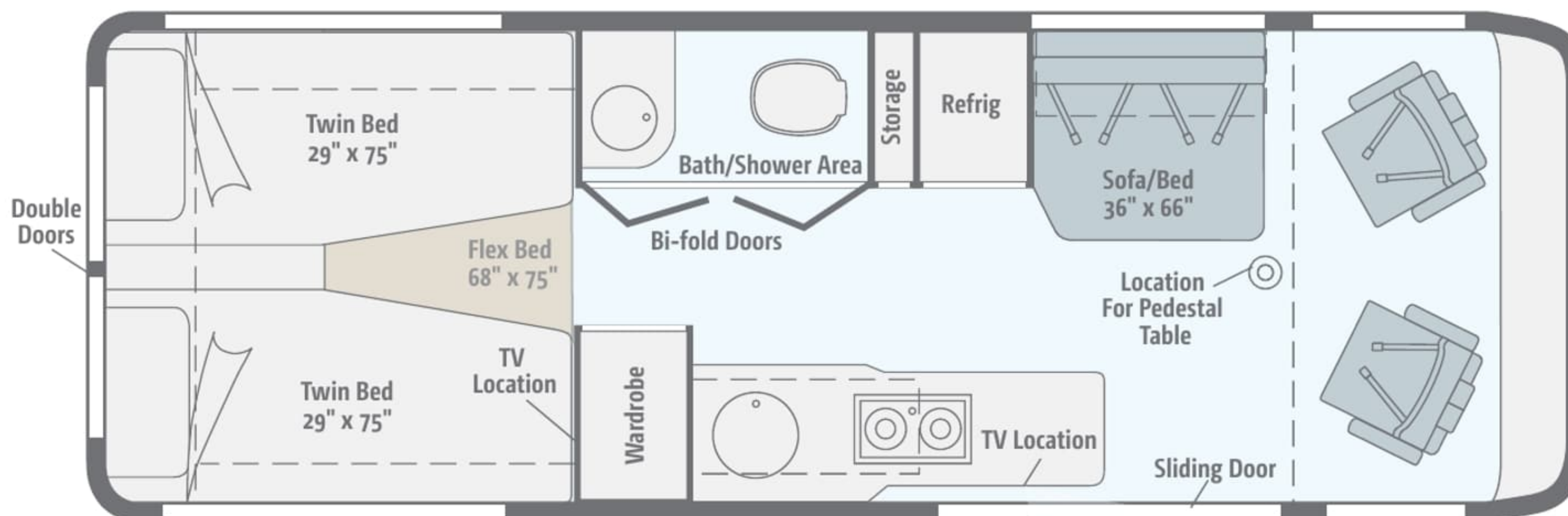
70A - NEW

The Flex Bed system can be a spacious queen bed or two twin beds based on your sleeping needs. The Flex Bed flips up and the rear doors open wide to access a large storage compartment with an exterior slideout tray.



The TV swivels for viewing indoors or outdoors while sitting under the awning.

Dimensions shown are for sleeping space only and may vary due to styling differences. Dashed lines denote overhead storage areas. Floorplans and specifications are also available online at EraRV.com.



70A - NEW

The Flex Bed system can be a spacious queen bed or two twin beds based on your sleeping needs. The Flex Bed flips up and the rear doors open wide to access a large storage compartment with an exterior slideout tray.



The TV swivels for viewing indoors or outdoors while sitting under the awning.

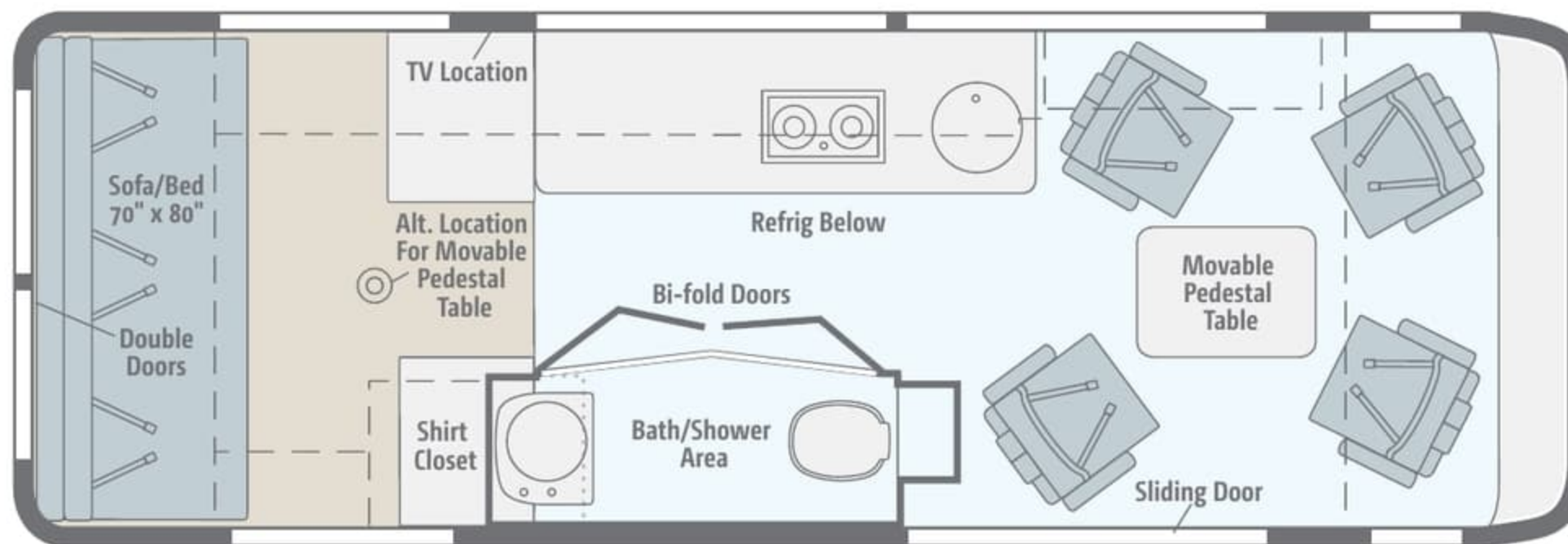
Dimensions shown are for sleeping space only and may vary due to styling differences. Dashed lines denote overhead storage areas. Floorplans and specifications are also available online at EraRV.com.



70X

Four plush captain seats and a rear sofa/bed with three belted positions make the 70X ideal for group travel. There are even four child seat tether anchors if you travel with kids.

Storage/
Wardrobe
Cabinet



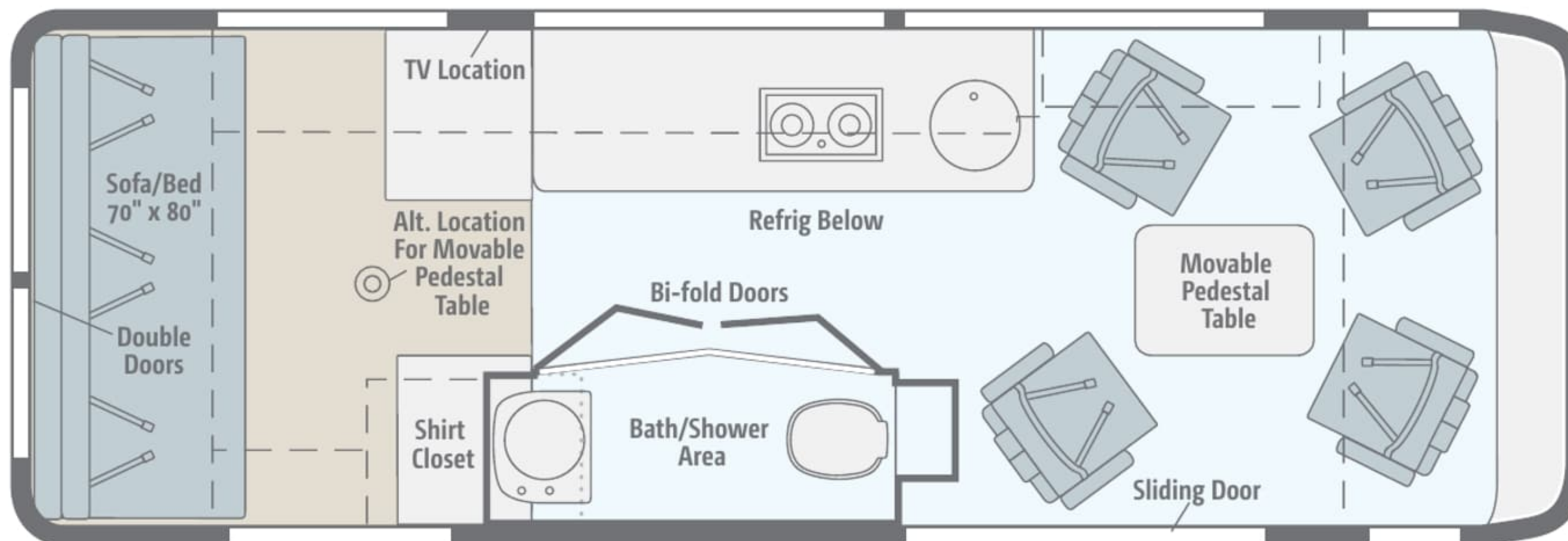
Dimensions shown are for sleeping space only and may vary due to styling differences. Dashed lines denote overhead storage areas. Floorplans and specifications are also available online at EraRV.com.



70X

Four plush captain seats and a rear sofa/bed with three belted positions make the 70X ideal for group travel. There are even four child seat tether anchors if you travel with kids.

Storage/
Wardrobe
Cabinet



Metro



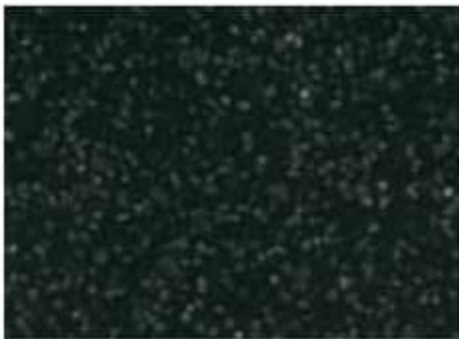
Cocoa Ultraleather



Carpet



Vinyl



Night Sky Corian®
Galley Countertop



Alpine Passage
HD Laminate Table Top



Dove Wall Fabric



Café Cherry

Metro



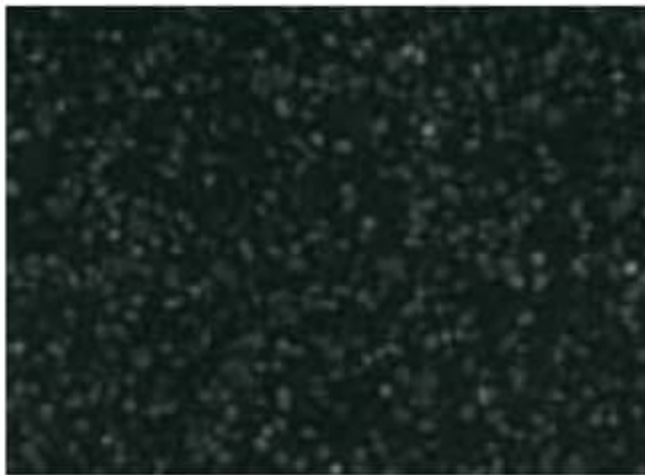
Cocoa Ultraleather



Carpet



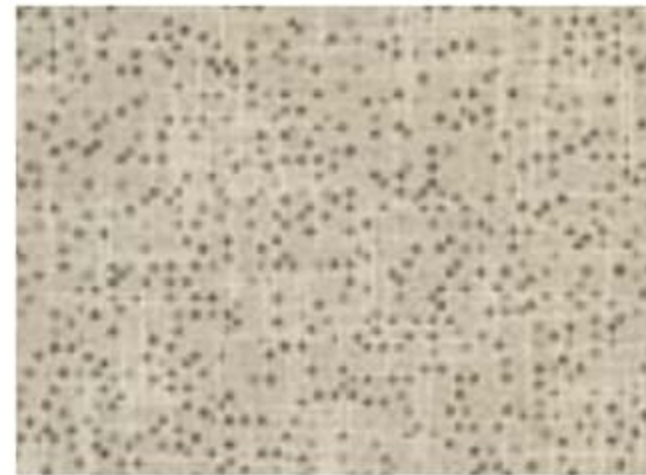
Vinyl



Night Sky Corian®
Galley Countertop



Alpine Passage
HD Laminate Table Top



Dove Wall Fabric



Café Cherry

Balance



Parchment Ultraleather



Carpet



Vinyl



Cottage Lane Corian®
Galley Countertop



Deepstar Agate
HD Laminate Table Top



White Sand Wall Fabric



Café Cherry

Balance



Parchment Ultraleather



Carpet



Vinyl



Cottage Lane Corian®
Galley Countertop



Deepstar Agate
HD Laminate Table Top



White Sand Wall Fabric



Café Cherry



SADDLE



SILVERSTONE



SADDLE



SILVERSTONE

Weights & Measures	NEW	
	70A	70X
Length	24'1"	24'1"
Exterior Height ¹	9'11"	9'11"
Exterior Width	6'4"	6'4"
Awning Length	13'	13'
Interior Height	6'3"	6'3"
Interior Width	5'10"	5'10"
Freshwater Capacity w/Heater ² (gal.)	34	34
Holding Tank Capacity – Black/Gray ² (gal.)	10/26	10/21
LP Capacity ³ (gal.)	16	16
Fuel Capacity (gal.)	26.4	26.4
GCWR ⁴ (lbs.)	15,250	15,250
GVWR (lbs.)	11,030	11,030
GAWR – Front (lbs.)	4,410	4,410
GAWR – Rear (lbs.)	7,720	7,720
Wheelbase	170"	170"

Mercedes-Benz® Sprinter Chassis

3L Mercedes-Benz 6-cylinder, 188-hp, turbo-diesel engine

5-speed automatic tip-shift transmission

4-wheel ABS brakes

180-amp. alternator

Stainless steel wheel liners

Polished grille bar covers

Trailer Hitch⁴ 5,000-lb. drawbar/500-lb. maximum vertical tongue weight

7-pin wiring connector

Optional Equipment

Stylized aluminum wheels

Cab Conveniences

RV Radio®/Rearview Monitor System 6.5" LCD touch screen, CD player, weather band, satellite ready, remote, iPod®/MP3 input, rearview color camera

Chassis/coach battery radio power switch

Cab Seats armrests, adjustable lumbar support, adjustable headrest and slide/swivel/recline

Cruise control

Power steering w/tilt wheel
Power mirrors w/defrost and turn signal
Power door locks w/remote
Power windows
12-volt powerpoints
Sunvisors
Built-in pleated, sliding front window blinds
Curtains for cab door windows
Appliqué package

Optional Equipment

Infotainment Center/GPS 7" touch screen monitor w/split screen function, turn-by-turn voice guidance, rear camera, Bluetooth™, AM/FM/CD/DVD player, remote, iPod interface connector, USB connection, satellite ready

Sirius® satellite radio w/iPod interface connector

Interior

22" LCD TV

Jack® Digital HDTV antenna

Stereo System AM/FM, CD/DVD player, remote

LED ceiling lights

MCD American Solo® blackout roller shades

Soft vinyl ceiling

Tinted windows

Powered ventilator fan (galley)

Powered roof vent (bath)

Powered sofa/bed (70X)

Removable companion seats w/swivel and slide (70X)

Systems monitor panel

Optional Equipment

Removable storage cabinet (70X)

Galley

Corian® solid-surface countertop

Microwave oven

2-burner range top w/glass cover

Refrigerator/freezer (w/removable freezer unit on 70A)

Stainless steel sink w/folding faucet and glass cover

Water filtration system (cold water)

Bath

Shower w/wall surround, bath cabinet and 3-compartment soap dispenser

Flexible showerhead

Shower curtain

Bedroom

Twin beds w/foam mattresses and Flex Bed kit (70A)

22" DC LCD TV w/remote (70A)

Exterior

Slideout compartment tray (access from rear door 70A)

Porch light

Running boards, rocker trim w/mud guard

Rear mud guards

Patio awning

Optional Equipment

Polished stainless steel rocker panel trim

Heating & Cooling System

16,000 BTU furnace

13,500 BTU high-efficiency roof A/C w/heat pump

Electrical System

AC/DC load center/converter

Auxiliary start circuit

Group 31 deep-cycle battery (AGM maintenance free)

Coach battery disconnect system

Dual battery charge system

45-amp. converter/charger

30-amp. power cord

Exterior TV jack

Exterior AC/DC receptacles

2,500-watt Cummins Onan® MicroQuiet™ LP generator

Optional Equipment

Additional Group 31 deep-cycle battery (AGM maintenance free)

Plumbing System

6-gallon 110V/LP water heater w/Energy Management System (EMS)

Exterior Service Center city water hookup/tank diverter valve, drainage valves, sewer hose w/shut-off valve and exterior wash station w/pump switch

TrueLevel™ holding-tank monitoring system

Winterization Package water heater bypass valve and siphon tube

On-demand water pump

12-volt macerator sewage pump (70X)

Permanent-mount LP tank w/gauge

Safety

Dual airbags

Seat belts

Child seat tether anchors (sofa and companion seats 70X)

LP, smoke and carbon monoxide detectors

10 BC fire extinguisher

Ground fault interrupter

Daytime running lamps

Fog lamps

High-mount brake lamp

Warranty⁵

12-month/15,000-mile basic warranty⁶

¹ The height of each model is measured to the top of the tallest standard feature and is based on the curb weight of a typically equipped unit. The actual height of your vehicle may vary by several inches depending on chassis or equipment variations. Please contact your dealer for further information.

² Capacities are based on measurements prior to tank installation. Slight capacity variations can result due to installation applications.

³ Capacities shown are tank manufacturer's listed water capacity (W.C.) Actual filled LP capacity is 80% of listing due to overfilling prevention device on tank.

⁴ Actual towing capacity is dependent upon your particular loading and towing circumstances, which includes the GVWR, GAWR and GCWR as well as adequate trailer brakes. Please refer to the Operator's Manual of your vehicle for further towing information.

⁵ See separate chassis warranty.

⁶ See your dealer for complete warranty information.

Not all items available in combination. See dealer for details.

Winnebago Industries® continuing program of product improvement makes specifications, equipment, model availability and prices subject to change without notice.

Weights & Measures	NEW	
	70A	70X
Length	24'1"	24'1"
Exterior Height ¹	9'11"	9'11"
Exterior Width	6'4"	6'4"
Awning Length	13'	13'
Interior Height	6'3"	6'3"
Interior Width	5'10"	5'10"
Freshwater Capacity w/Heater ² (gal.)	34	34
Holding Tank Capacity – Black/Gray ² (gal.)	10/26	10/21
LP Capacity ³ (gal.)	16	16
Fuel Capacity (gal.)	26.4	26.4
GCWR ⁴ (lbs.)	15,250	15,250
GVWR (lbs.)	11,030	11,030
GAWR – Front (lbs.)	4,410	4,410
GAWR – Rear (lbs.)	7,720	7,720
Wheelbase	170"	170"

Mercedes-Benz® Sprinter Chassis

3L Mercedes-Benz 6-cylinder, 188-hp, turbo-diesel engine

5-speed automatic tip-shift transmission

4-wheel ABS brakes

180-amp. alternator

Stainless steel wheel liners

Polished grille bar covers

Trailer Hitch⁴ 5,000-lb. drawbar/500-lb. maximum vertical tongue weight

7-pin wiring connector

Optional Equipment

Stylized aluminum wheels

Cab Conveniences

RV Radio®/Rearview Monitor System 6.5" LCD touch screen, CD player, weather band, satellite ready, remote, iPod®/MP3 input, rearview color camera

Chassis/coach battery radio power switch

Cab Seats armrests, adjustable lumbar support, adjustable headrest and slide/swivel/recline

Cruise control

Power steering w/tilt wheel
Power mirrors w/defrost and turn signal
Power door locks w/remote
Power windows
12-volt powerpoints
Sunvisors
Built-in pleated, sliding front window blinds
Curtains for cab door windows
Appliqué package

Optional Equipment

Infotainment Center/GPS 7" touch screen monitor w/split screen function, turn-by-turn voice guidance, rear camera, Bluetooth™, AM/FM/CD/DVD player, remote, iPod interface connector, USB connection, satellite ready

Sirius® satellite radio w/iPod interface connector

Interior

22" LCD TV

Jack® Digital HDTV antenna

Stereo System AM/FM, CD/DVD player, remote

LED ceiling lights

MCD American Solo® blackout roller shades

Soft vinyl ceiling

Tinted windows

Powered ventilator fan (galley)

Powered roof vent (bath)

Powered sofa/bed (70X)

Removable companion seats w/swivel and slide (70X)

Systems monitor panel

Optional Equipment

Removable storage cabinet (70X)

Galley

Corian® solid-surface countertop

Microwave oven

2-burner range top w/glass cover

Refrigerator/freezer (w/removable freezer unit on 70A)

Stainless steel sink w/folding faucet and glass cover

Water filtration system (cold water)

Bath

Shower w/wall surround, bath cabinet and 3-compartment soap dispenser

Flexible showerhead

Shower curtain

Bedroom

Twin beds w/foam mattresses and Flex Bed kit (70A)

22" DC LCD TV w/remote (70A)

Exterior

Slideout compartment tray (access from rear door 70A)

Porch light

Running boards, rocker trim w/mud guard

Rear mud guards

Patio awning

Optional Equipment

Polished stainless steel rocker panel trim

Heating & Cooling System

16,000 BTU furnace

13,500 BTU high-efficiency roof A/C w/heat pump

Electrical System

AC/DC load center/converter

Auxiliary start circuit

Group 31 deep-cycle battery (AGM maintenance free)

Coach battery disconnect system

Dual battery charge system

45-amp. converter/charger

30-amp. power cord

Exterior TV jack

Exterior AC/DC receptacles

2,500-watt Cummins Onan® MicroQuiet™

LP generator

Optional Equipment

Additional Group 31 deep-cycle battery (AGM maintenance free)

Plumbing System

6-gallon 110V/LP water heater w/Energy Management System (EMS)

Exterior Service Center city water hookup/tank diverter valve, drainage valves, sewer hose w/shut-off valve and exterior wash station w/pump switch

TrueLevel™ holding-tank monitoring system

Winterization Package water heater bypass valve and siphon tube

On-demand water pump

12-volt macerator sewage pump (70X)

Permanent-mount LP tank w/gauge

Safety

Dual airbags

Seat belts

Child seat tether anchors (sofa and companion seats 70X)

LP, smoke and carbon monoxide detectors

10 BC fire extinguisher

Ground fault interrupter

Daytime running lamps

Fog lamps

High-mount brake lamp

Warranty⁵

12-month/15,000-mile basic warranty⁶

¹ The height of each model is measured to the top of the tallest standard feature and is based on the curb weight of a typically equipped unit. The actual height of your vehicle may vary by several inches depending on chassis or equipment variations. Please contact your dealer for further information.

² Capacities are based on measurements prior to tank installation. Slight capacity variations can result due to installation applications.

³ Capacities shown are tank manufacturer's listed water capacity (W.C.) Actual filled LP capacity is 80% of listing due to overfilling prevention device on tank.

⁴ Actual towing capacity is dependent upon your particular loading and towing circumstances, which includes the GVWR, GAWR and GCWR as well as adequate trailer brakes. Please refer to the Operator's Manual of your vehicle for further towing information.

⁵ See separate chassis warranty.

⁶ See your dealer for complete warranty information.

Not all items available in combination. See dealer for details.

Winnebago Industries® continuing program of product improvement makes specifications, equipment, model availability and prices subject to change without notice.

JOIN THE CLUB, JOIN THE FUN.



As a Winnebago Industries motor home owner, you are invited to join the WIT Club. It's a great way to take full advantage of your new coach and meet fun-loving WIT Club members from across the country who make motor home adventures a way of life.

Members enjoy:

- Caravans and Rallies
- Newsletters
- Local and State Group Activities
- RV Travel Benefits

See more on WITclub.com

PREFERRED CARE PROGRAM

We back our motor homes with best-in-class support both before and after the sale:

- 12-month/15,000-mile basic limited warranty
- Complimentary 24-hour roadside assistance program  Premium **ROADSIDE ASSISTANCE**



- TripSaver® Fast Track Parts guarantees that in-stock warranty parts ship directly to your dealer within 24 hours
- National dealer service network

ERARV.COM HAS GONE MOBILE.

Learn more about the 2013 Era on your computer, smartphone or tablet. Visit EraRV.com for the complete Era experience.



THE MOST RECOGNIZED NAME IN MOTOR HOMES*

JOIN THE CLUB, JOIN THE FUN.



As a Winnebago Industries motor home owner, you are invited to join the WIT Club. It's a great way to take full advantage of your new coach and meet fun-loving WIT Club members from across the country who make motor home adventures a way of life.


Members enjoy:

- Caravans and Rallies
- Newsletters
- Local and State Group Activities
- RV Travel Benefits

See more on WITclub.com

PREFERRED CARE PROGRAM

We back our motor homes with best-in-class support both before and after the sale:

- 12-month/15,000-mile basic limited warranty
- Complimentary 24-hour roadside assistance program 



- TripSaver® Fast Track Parts guarantees that in-stock warranty parts ship directly to your dealer within 24 hours
- National dealer service network



ERARV.COM HAS GONE MOBILE.

Learn more about the 2013 Era on your computer, smartphone or tablet. Visit EraRV.com for the complete Era experience.



THE MOST RECOGNIZED NAME IN MOTOR HOMES*