

ALUMA-LITE ULTRA

HOLIDAY RAMBLER



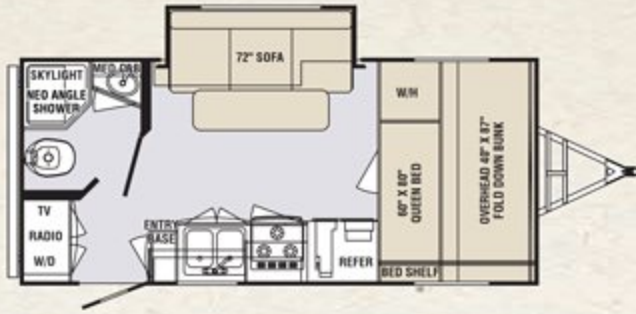
TRAVEL TRAILERS



HOLIDAY RAMBLER

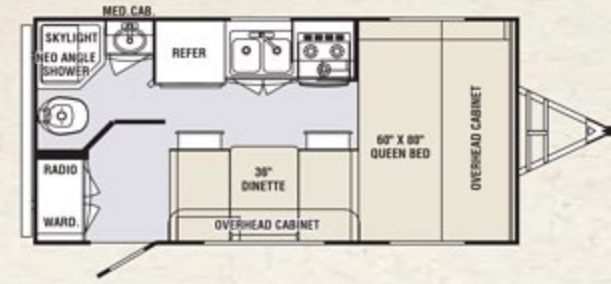
177SS

7' 6" WIDE



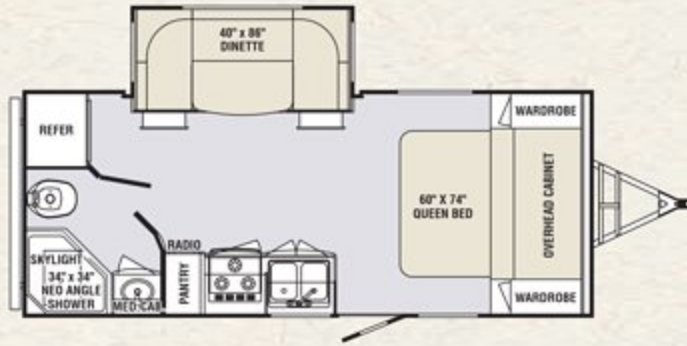
187QB

7' 6" WIDE



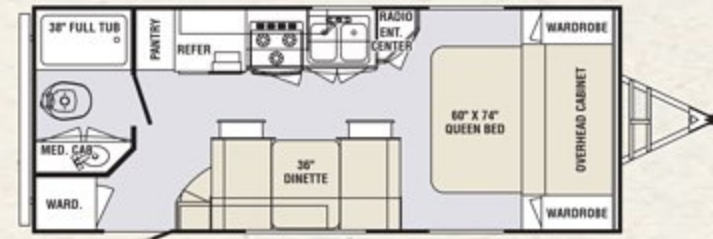
207S

7' 6" WIDE



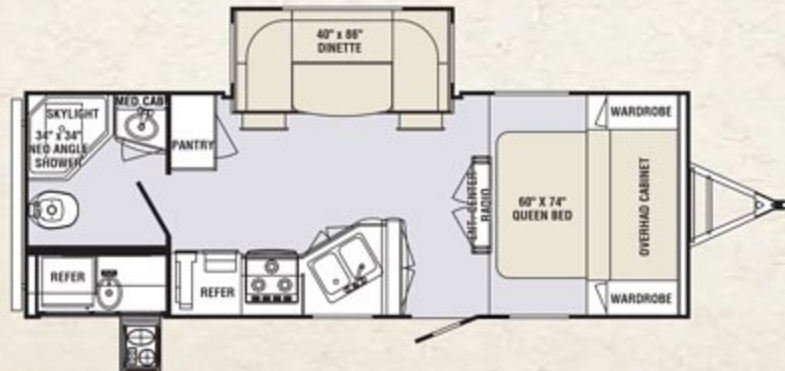
207QB

7' 6" WIDE



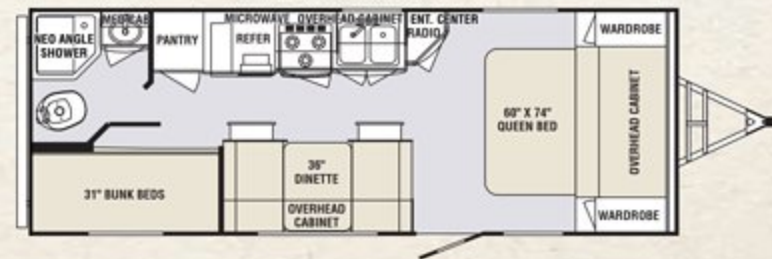
217RB

7' 6" WIDE



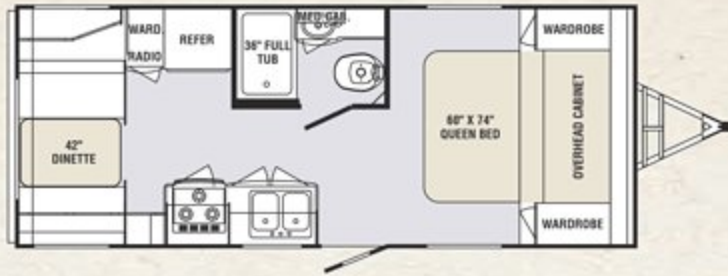
237BH

7' 6" WIDE



218RD

8' 0" WIDE



258SS

8' 0" WIDE



MURPHY BED OPTION

AVAILABLE ON

- > 207S > 237BH
- > 207QB > 258SS

	7' 6" WIDE						8' 0" WIDE	
	177SS	187QB	207S	207QB	217RB	237BH	218RD	258SS
WEIGHTS*								
Gross Vehicle Weight Rating (lbs.)	6,160	3,850	6,160	6,160	6,160	6,160	6,160	6,160
Base Hitch Weight (Approx.)	395	377	275	330	345	535	470	426
Base Axle(s) Weight (Approx.)	3,035	2,520	3,475	3,080	3,735	3,087	3,170	3,650
Net Carrying Capacity (NCC)	2,730	953	2,410	2,750	2,080	2,538	2,520	2,084
Tire Size (ST205/75R14C)	14"	14"	14"	14"	14"	14"	14"	14"
Tire Load Range	C	C	C	C	C	C	C	C
MEASUREMENTS								
Overall Length	20' 9"	19' 8"	22' 4"	23' 2"	25' 7"	25' 1"	23' 11"	27' 3"
Overall Height (including A/C)	9' 7"	9' 7"	9' 7"	9' 7"	9' 7"	9' 7"	9' 9"	9' 9"
Interior Height	76"	76"	76"	76"	76"	76"	78"	78"
Interior Width	87 1/2"	87 1/2"	87 1/2"	87 1/2"	87 1/2"	87 1/2"	93 3/4"	93 3/4"
Exterior Width (w/o Awning)	7' 6"	7' 6"	7' 6"	7' 6"	7' 6"	7' 6"	8' 0"	8' 0"
TANK CAPACITIES**								
Water Heater (gal.)	6	6	6	6	6	6	6	6
Grey Tank (gal.)	25	25	25	25	25	25	30	30
Black Tank (gal.)	25	25	25	25	25	25	30	30
Fresh Tank (gal.)	30	30	30	30	30	30	30	30
LP Tank (Two 20 Gal. Tanks)	S	S	S	S	S	S	S	S

* Weights may vary by options.

** Tank manufacturer's listed water capacity (WC). Actual filled LP capacity is 80% of listing due to safety shut off required on tank.

STANDARD FEATURES

CHASSIS FEATURES

- > I-Beam Frame - 6" Powder Coated
- > Dual 2,800 Tandem Axles (N/A on 187QB)
- > Single 3,500 Axle (187QB only)
- > 10" Electric Brakes
- > Leaf Spring Suspension
- > Frame Mounted Entry Step
- > Manual Front Hitch Jack
- > 2-5/16" Ball Coupler

EXTERIOR FEATURES

- > Molded ABS Fender Skirts
- > Rain Gutters w/Downspouts
- > Premium Vinyl Graphics
- > LED Clearance Lights
- > Porch Light
- > Hitch Light
- > Storage Compartment Light
- > Utility Light
- > Patio Side 120V Exterior Recept
- > Patio Side Cable TV Hook-up

CONSTRUCTION FEATURES

- > Laminated Floor, Roof, Sidewalls, Front Wall & Rear Wall
- > Electric Cable Slide-out System (Where Applicable)

APPLIANCES AND ACCESSORIES FEATURES

- > Double Door 5 cu. ft. Refrigerator (N/A on 218RD & 258SS)
- > Lighted Powered Range Hood
- > 55AMP Converter w/Charger
- > 12V Roof Vent in Bathroom
- > 18M BTU Furnace (N/A 218RD & 258SS)
- > 20M BTU Furnace (218RD & 258SS)

INTERIOR STANDARD FEATURES

- > Solid Hardwood Espresso Cherry Stained Cabinetry
- > Lumber Core Cabinet Stiles
- > Congoleum Linoleum
- > Wood Grain Panel Refrigerator Insert Doors
- > Booth Dinette (N/A on 207S & 217RB)
- > U-shaped Booth Dinette (207S & 217RB)
- > Tub/Shower Surround
- > Systems Monitor Panel
- > Medicine Cabinet w/Mirror
- > Decorative Slide-out Fascia
- > Neo-Angle Glass Shower Door (207S & 217RB Mandatory Option)

SAFETY FEATURES

- > Fire Extinguisher
- > Deadbolt Lock(s) on Entrance Door(s)
- > 120V GFI Protected Outlets (Kitchen, Bath, Exterior)
- > Breakaway Switch
- > Safety Chains
- > LP Gas Detector
- > Smoke Detector
- > Co Detector
- > Egress Window(s)

ULTRA CONVENIENCE PACKAGE

- > 14" Radial Tires
- > EZ-Lube Hubs
- > Stabilizer Jacks
- > Detachable 30 AMP Power Cord
- > Ext. Utility Light
- > LP Bottle Cover
- > LP "Quick Connect" Port
- > Diamond Plate Front Radius Cover
- > Oversized Dinette Window
- > Safety Glass Windows
- > X- Wide Luggage Doors (Front)
- > Radius Entry Door, w/Screen Door & Dead Bolt
- > 6-Sided Aluminum Welded Framing

- > Ducted Heat (Where Applicable)
- > Interior Cabinetry - Lumber Core Stiles Pocket Drilled & Screwed
- > Dual 20 lb. LP Bottles
- > Ball Bearing Stainless Steel Drawer Glides
- > 7-Ply Cabinet Grade Drawer Boxes
- > Night Shades
- > Stainless Steel Kitchen Sink
- > Pull-out Faucet w/Sprayer
- > Skylight in Bathroom

ULTRA VALUE PACKAGE

- > Exterior Speakers
- > Enclosed Underbelly
- > 13.5M BTU A/C (Non-ducted)
- > Oven w/3-Burner Range
- > Microwave Oven
- > AM/FM/CD/DVD/iPod/MP3 Stereo
- > TV Antenna w/Cable Hook-ups

HR LAMINATED SUPREME PACKAGE

- > Aluminum Wheels
- > Equa-Flex Suspension
- > Taupe Lamilux 4000-High Gloss Gel Coat Exterior
- > Frameless Windows Dark Tinted Windows
- > Radius Slam Latch Luggage Doors
- > Power Electric Awning
- > Keyless Entry Front Door
- > Outside Shower
- > LED Running Lights
- > 6 gal., G/E DSI 110 Water Heater
- > Stove Cover
- > Pillowtop Mattress
- > Porcelain Toilet
- > Phone Charging Station
- > Sink Cover

GENERAL OPTIONS

POPULAR OPTIONS

- > 32" LED TV (217RB)
- > 22" LED TV (N/A on 207S & 217RB)
- > 19" LCD TV (207S)
- > A/C 15,000 BTU
- > Rear Ladder
- > Spare Tire w/Cover
- > Electric Tongue Jack
- > Canadian RV Certification
- > Bumper Mount Grill Bracket
- > RVQ Grill
- > Fantastic Attic Fan (Bedroom)

DÉCOR OPTIONS

- > Moon Beam III
- > Mocha
- > Latte
- > Spice Tea

The actual overall length of the recreational vehicle may differ from that indicated in the brochure due to variances in the manufacturing process and/or installed components. The actual length may be greater or less than that indicated. Due to the large variety of options and floorplan arrangements available to our customers, actual weights for each unit can differ significantly. Holiday Rambler provides a weight sticker on each unit we produce which includes that unit's tank capacities and approximate weight. Consult your local Holiday Rambler dealer for unit availability and further information. The information printed in this brochure reflects product design, fabrication, and component parts at the date of printing. The manufacturer reserves the right, at any time, to make changes in product design or material or component specifications as its sole option, without notice. This includes the substitution of components of a different brand or trade name which will result in comparable performance. All information printed in this brochure is subject to change after the date of printing. Some features shown or mentioned in this brochure are optional and may only be available in selected floorplans. Photographs may show props or decorations that are not standard equipment. Holiday Rambler, the Holiday Rambler logo and its design, are registered trademarks. Other products and company names are trademarks and/or registered trademarks of their respective holders. While the interior fabrics depicted in this sales brochure are fair and reasonable depictions, the colors depicted may not be an exact match of the actual colors because of the variances in photo-processing and printing. Due to product improvements, changes during the model year and/or transcription errors that may occur, information represented within this brochure may not be accurate at the time of your purchase. If certain information is significant to your purchasing decision, please confirm the information with your dealer. Component part and appliance manufacturers issue limited warranties covering portions of the recreational vehicle not covered under the Limited Warranties issued by Holiday Rambler. To learn specific details regarding warranty coverage, please contact your selling dealership or review the warranty packet inside the recreational vehicle.

For more information on standards and options, please go to www.holidayrambler.com
606 Nelson's Parkway, Wakarusa IN 46573 • 877 252 4666

