

MONARCH SE | 2014
Class A Gas



MONACO

MONARCH SE | 2014
Class A Gas



MONACO



KEY FEATURES

RIDE AND DRIVE

- 362 horsepower, 457 lbs/ft torque Ford Triton V10 engine.
- Smart-Structure truss system for added chassis strength and durability with optional automatic hydraulic leveling system.
- Back-up camera or 2 side cameras optional.
- Ergonomically designed cockpit for unmatched visibility and reach.

INTERIOR

- Upgraded leatherette cockpit seats and Comfort Fit™ sofas.
- New modern décor - expanded color palette.
- LCD TV standard in living area. Bedroom TV and Surround Sound System with DVD optional.
- Full width windshield shade. Power shade and pull-down solar/night side shades optional.
- Most interior room in its class. 84" high soft touch padded vinyl ceiling.
- Raised panel hardwood cabinet with hidden hinges, 3-burner cooktop, 30" space saver convection microwave.
- Stainless steel undermount sink. Decorative glass backsplash.
- Washer/dryer option available in select floorplans.
- Full bath with glass shower door.
- Queen bed with decorative fabric headboard and spacious wardrobe. Hallway bunk available in select floorplans.
- Single 13.5M BTU AC with ducted air. 15MBTU or Dual 13.5M BTU AC options available.

EXTERIOR

- Service/utility compartment with hot and cold exterior shower in select floorplan.
- Side swing aluminum storage doors with seamless rotocast pass through storage. Fiberglass fenders.
- Fiberglass front and rear caps, LED taillights. Optional full body 4-color paint.
- Exterior mega storage under bed in select floorplans.
- Radius flush mount charcoal tinted windows.
- Optional exterior entertainment center.





KEY FEATURES

RIDE AND DRIVE

- 362 horsepower, 457 lbs/ft torque Ford Triton V10 engine.
- Smart-Structure truss system for added chassis strength and durability with optional automatic hydraulic leveling system.
- Back-up camera or 2 side cameras optional.
- Ergonomically designed cockpit for unmatched visibility and reach.

INTERIOR

- Upgraded leatherette cockpit seats and Comfort Fit™ sofas.
- New modern décor - expanded color palette.
- LCD TV standard in living area. Bedroom TV and Surround Sound System with DVD optional.
- Full width windshield shade. Power shade and pull-down solar/night side shades optional.
- Most interior room in its class. 84" high soft touch padded vinyl ceiling.
- Raised panel hardwood cabinet with hidden hinges, 3-burner cooktop, 30" space saver convection microwave.
- Stainless steel undermount sink. Decorative glass backsplash.
- Washer/dryer option available in select floorplans.
- Full bath with glass shower door.
- Queen bed with decorative fabric headboard and spacious wardrobe. Hallway bunk available in select floorplans.
- Single 13.5M BTU AC with ducted air. 15MBTU or Dual 13.5M BTU AC options available.

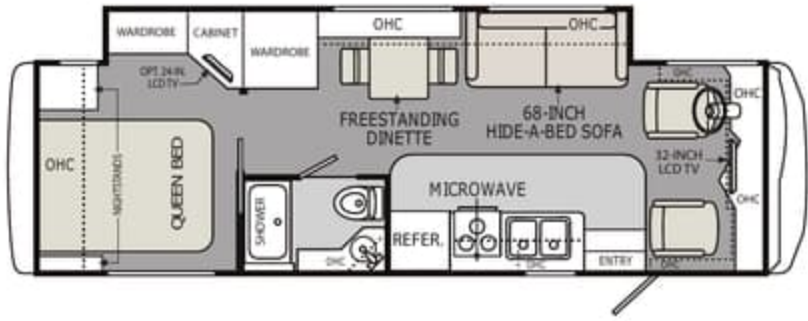
EXTERIOR

- Service/utility compartment with hot and cold exterior shower in select floorplan.
- Side swing aluminum storage doors with seamless rotocast pass through storage. Fiberglass fenders.
- Fiberglass front and rear caps, LED taillights. Optional full body 4-color paint.
- Exterior mega storage under bed in select floorplans.
- Radius flush mount charcoal tinted windows.
- Optional exterior entertainment center.



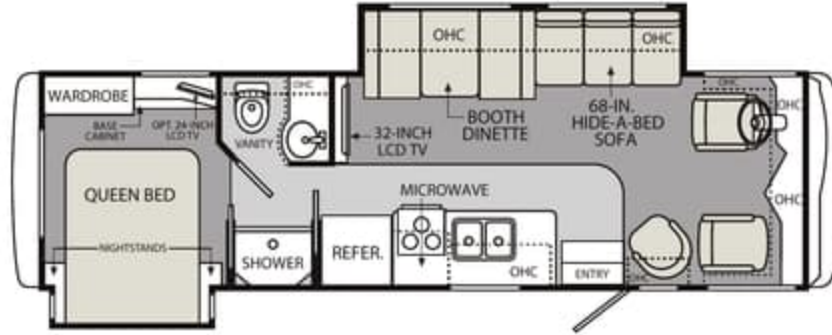
30SFS

B



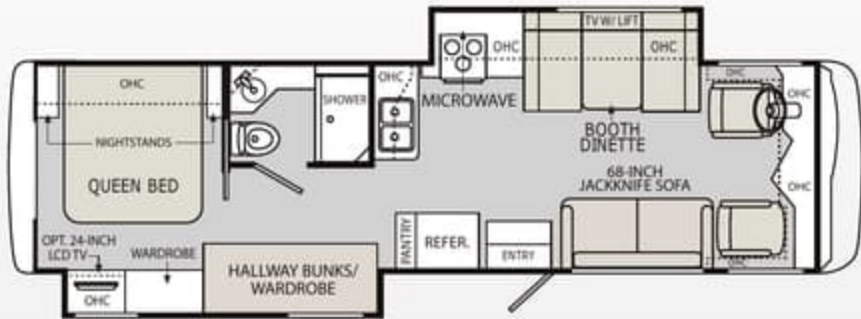
32WBD

B D



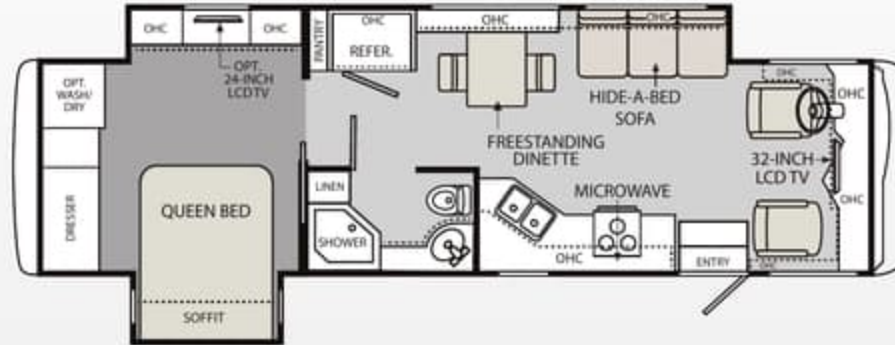
32SBD

A C



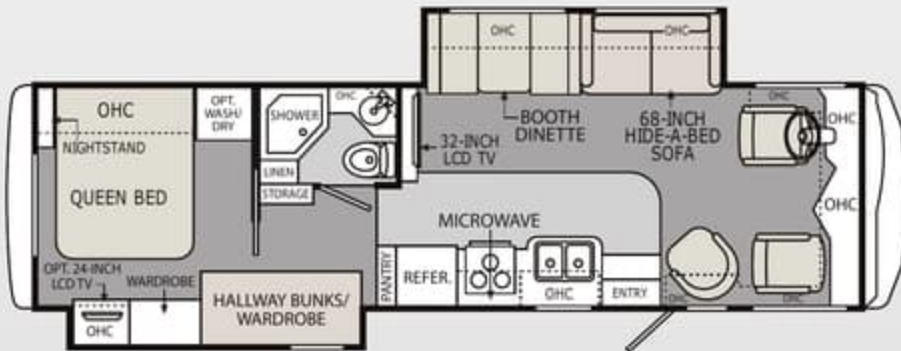
33SFD

B



34SBD

A B D



FURNITURE OPTIONS



HALLWAY BOOTH DINETTE WUPPER BUNK

A



DREAM DINETTE

B



TWO EURO RECLINERS

C



ONE EURO RECLINER

D

STREET CHIC



HAVEN



HILLSIDE CHERRY

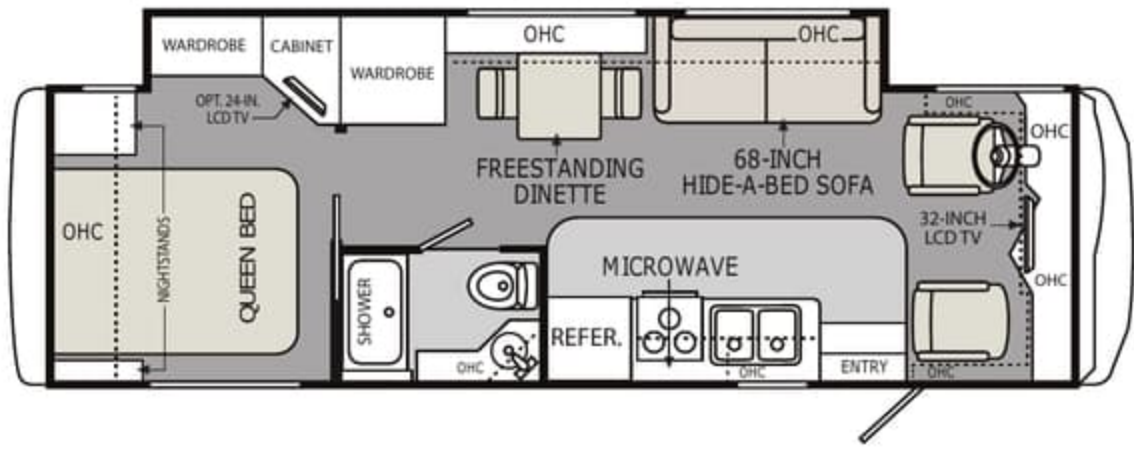


FULTON CHERRY

Due to continuous product improvements, please visit us online at monacocoach.com for the latest in standards, options, specifications and technical data.

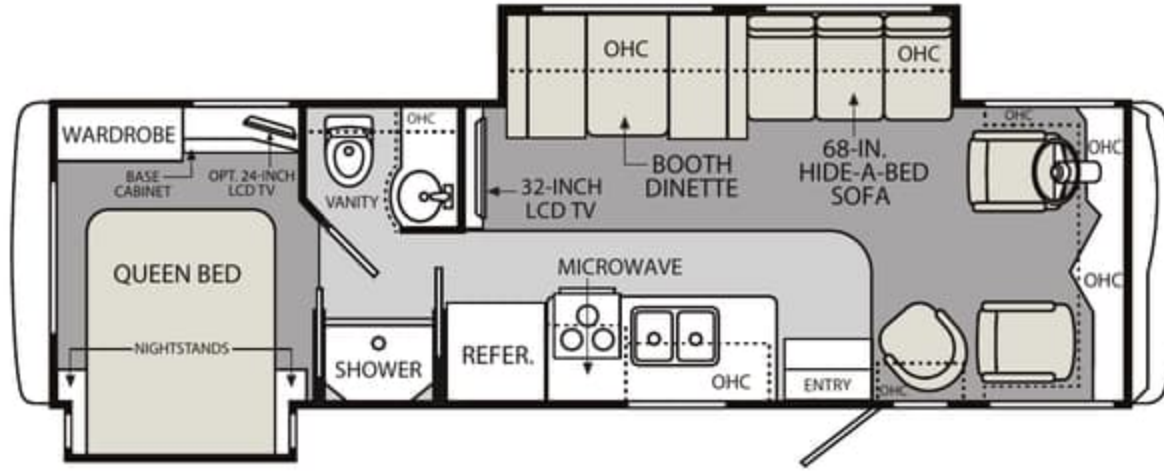
30SFS

B



32WBD

B D

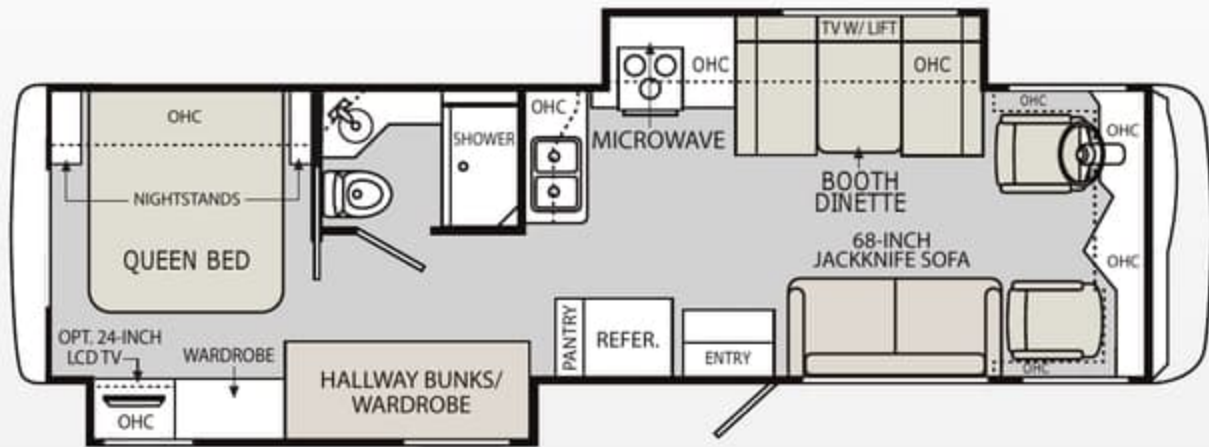


STREET CHIC



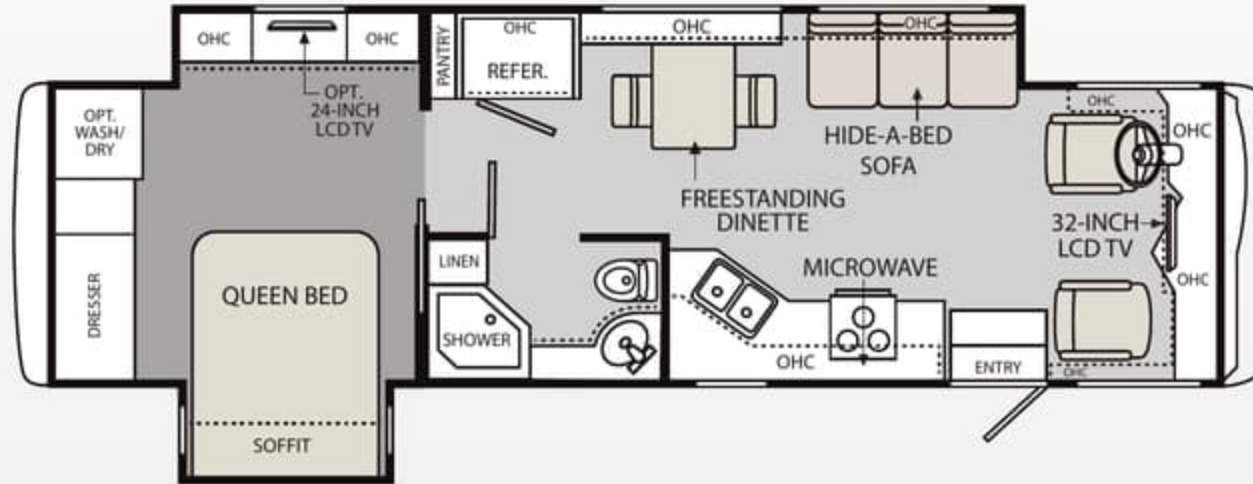
32SBD

A C



33SFD

B

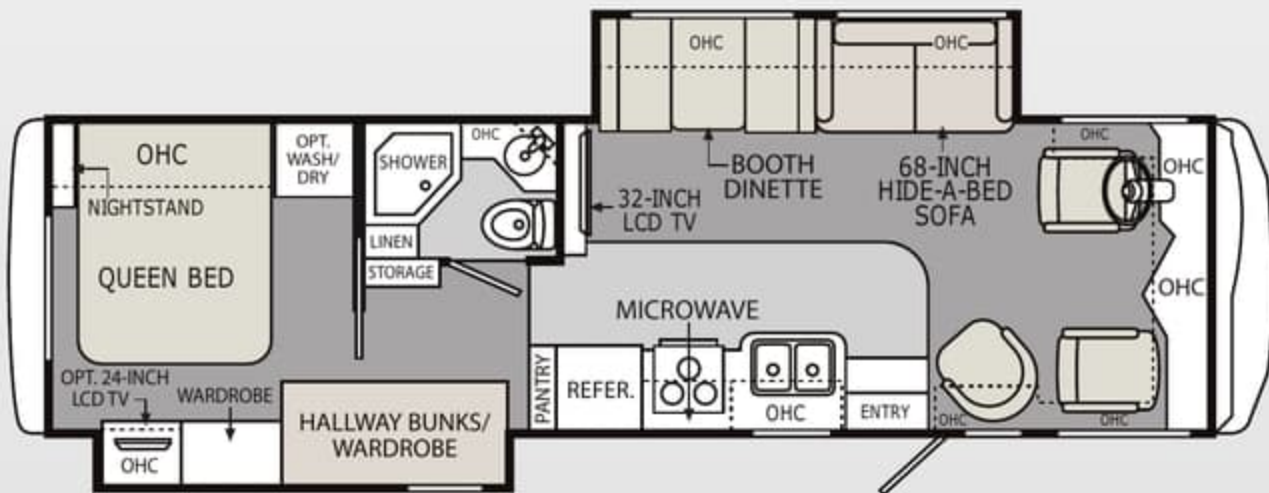


HAVEN



34SBD

A B D

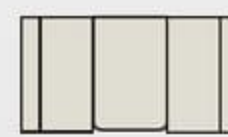


FURNITURE OPTIONS



HALLWAY
BOOTH DINETTE
W/UPPER BUNK

A



DREAM
DINETTE

B



TWO EURO
RECLINERS

C



ONE EURO
RECLINER

D



HILLSIDE
CHERRY



FULTON
CHERRY

Due to continuous product improvements, please visit us online at monacocoach.com for the latest in standards, options, specifications and technical data.



STANDARD PAINT WITH TAPE GRAPHICS



BLACK WHITE BLUE



DARK BROWN GOLD BEIGE



BLACK RED BROWN

Weights - Ford Chassis (LBS)*	30SFS	32WBD	32SBD	33SFD	34SBD
Gross Vehicle Weight Rating	18,000	18,000	18,000	20,500	20,500
Gross Combined Weight Rating	23,000	23,000	23,000	26,000	26,000
Front Gross Axle Weight Rating	7,000	7,000	7,000	7,500	7,500
Rear Gross Axle Weight Rating	12,000	12,000	12,000	13,500	13,500
MEASUREMENTS					
Wheelbase	190"	208"	208"	208"	228"
Overall Length	30'-11"	33'-5"	33'-5"	35'-2"	35'-5"
Overall Height, Including A/C	12'-3"	12'-3"	12'-3"	12' - 9"	12' - 9"
Interior Height	84"	84"	84"	84"	84"
Interior Width	96"	96"	96"	95"	96"
Exterior Width	100.5"	100.5"	100.5"	100.5"	100.5"
TANK CAPACITIES (GAL)**					
Water Heater	6	6	6	6	6
Grey Tank	40	40	40	40	40
Black Tank	40	40	40	40	40
Fresh Tank	60	60	60	60	60
Fuel Tank	80	80	80	80	80
LP Tank***	68 / 16	68 / 16	68 / 16	68 / 16	68 / 16

*Towing capacity is limited by GCWR; your vehicle's towing capacity is the difference between the GCWR and the actual vehicle weight, including all water, fuel, passengers and cargo. Your towed vehicle should be equipped with auxiliary brakes if the weight of the towed vehicle exceeds 1,000 lbs. Consult your owner's manual for further towing information.

**All tank capacities are estimated based upon calculations provided by the tank manufacturers and represent approximate capacities. The actual "usable capacity" may be greater or less than the estimated capacities based upon fabrication and installation of the tanks.

***Actual filled LP capacity is 80% of listing due to safety shut-off required on tank.

For more information on standards and options, please go to www.monacocoach.com
 Monaco RV • 606 Nelson's Parkway, Wakarusa IN 46573 • 877 252 4666

MORE TO STORE

Monarch features a large, pass-through storage bay with side-hinged baggage doors.



AROUND THE CLOCK SERVICE AND SUPPORT

When you take delivery of your new recreational vehicle, it's just the beginning of our exclusive around-the clock Owner Advantage Program™.

We offer an extensive support program that provides complete roadside assistance and special motor club benefits that follow you wherever your travels take you. We've teamed up with the most trusted RV emergency road service company in the country to give you immediate access to fast, dependable service when and where you need it.

Add our toll-free service appointment assistance, plus a technical assistance hotline, and you have the security of 24-hour, full-time support at your fingertips.

WARRANTY INFORMATION

Enjoy your next RV adventure with the peace of mind that comes with a 12 month/24,000 mile basic limited warranty; a 5 year/50,000 mile limited warranty on aluminum or steel frame structure; and a 3 year/50,000 mile limited warranty on the Chassis. Review your coach's limited warranty in full for complete terms and conditions.

SERVICE AND SUPPORT

24/7 service and support – Toll-free 877-211-8135



STANDARD PAINT WITH TAPE GRAPHICS



BLACK WHITE BLUE



DARK BROWN GOLD BEIGE



BLACK RED BROWN

Weights - Ford Chassis (LBS)*	30SFS	32WBD	32SBD	33SFD	34SBD
Gross Vehicle Weight Rating	18,000	18,000	18,000	20,500	20,500
Gross Combined Weight Rating	23,000	23,000	23,000	26,000	26,000
Front Gross Axle Weight Rating	7,000	7,000	7,000	7,500	7,500
Rear Gross Axle Weight Rating	12,000	12,000	12,000	13,500	13,500
MEASUREMENTS					
Wheelbase	190"	208"	208"	208"	228"
Overall Length	30'-11"	33'-5"	33'-5"	35'-2"	35'-5"
Overall Height, Including A/C	12'-3"	12'-3"	12'-3"	12' - 9"	12' - 9"
Interior Height	84"	84"	84"	84"	84"
Interior Width	96"	96"	96"	95"	96"
Exterior Width	100.5"	100.5"	100.5"	100.5"	100.5"
TANK CAPACITIES (GAL)**					
Water Heater	6	6	6	6	6
Grey Tank	40	40	40	40	40
Black Tank	40	40	40	40	40
Fresh Tank	60	60	60	60	60
Fuel Tank	80	80	80	80	80
LP Tank***	68 / 16	68 / 16	68 / 16	68 / 16	68 / 16

*Towing capacity is limited by GCWR; your vehicle's towing capacity is the difference between the GCWR and the actual vehicle weight, including all water, fuel, passengers and cargo. Your towed vehicle should be equipped with auxiliary brakes if the weight of the towed vehicle exceeds 1,000 lbs. Consult your owner's manual for further towing information.

**All tank capacities are estimated based upon calculations provided by the tank manufacturers and represent approximate capacities. The actual "usable capacity" may be greater or less than the estimated capacities based upon fabrication and installation of the tanks.

***Actual filled LP capacity is 80% of listing due to safety shut-off required on tank.

For more information on standards and options, please go to www.monacocoach.com
 Monaco RV • 606 Nelson's Parkway, Wakarusa IN 46573 • 877 252 4666

MORE TO STORE

Monarch features a large, pass-through storage bay with side-hinged baggage doors.



AROUND THE CLOCK SERVICE AND SUPPORT

When you take delivery of your new recreational vehicle, it's just the beginning of our exclusive around-the clock Owner Advantage Program™.

We offer an extensive support program that provides complete roadside assistance and special motor club benefits that follow you wherever your travels take you. We've teamed up with the most trusted RV emergency road service company in the country to give you immediate access to fast, dependable service when and where you need it.

Add our toll-free service appointment assistance, plus a technical assistance hotline, and you have the security of 24-hour, full-time support at your fingertips.

WARRANTY INFORMATION

Enjoy your next RV adventure with the peace of mind that comes with a 12 month/24,000 mile basic limited warranty; a 5 year/50,000 mile limited warranty on aluminum or steel frame structure; and a 3 year/50,000 mile limited warranty on the Chassis. Review your coach's limited warranty in full for complete terms and conditions.

SERVICE AND SUPPORT

24/7 service and support – Toll-free 877-211-8135