

Access Premier



Why Access Premier?

- Three versatile, family-friendly floorplans
- LED ceiling lights
- MCD solar/blackout roller shades
- Radio/Rearview Monitor System
- Powered patio awning with LED lighting
- Large rear storage compartments
- Available Infotainment Center with Rand McNally RV GPS
- 4,000-watt Cummins Onan® MicroQuiet™ gas generator
- Available 1,000-watt DC/AC inverter

Access Premier



Why Access Premier?

- Three versatile, family-friendly floorplans
- LED ceiling lights
- MCD solar/blackout roller shades
- Radio/Rearview Monitor System
- Powered patio awning with LED lighting
- Large rear storage compartments
- Available Infotainment Center with Rand McNally RV GPS
- 4,000-watt Cummins Onan® MicroQuiet™ gas generator
- Available 1,000-watt DC/AC inverter



On the cover: 26QP Mahogany Full-Body Paint

26QP Sonoma with Coffee-Glazed Vienna Maple Cabinetry

Discretionary Buyer

The Access® Premier continues to exceed expectations for style, comfort, and value. This year, LED ceiling lights and MCD solar/blackout roller shades come standard and Ultraleather™ seating is available to give your furniture added upscale appeal. You will also appreciate the dash appliqué and beautiful Forest Cherry or Coffee-Glazed

Vienna Maple cabinetry. Outside, a powered patio awning and your choice of deluxe graphics or full-body paint set the stage for an amazing adventure. With Winnebago Industries'® legendary SuperStructure® as its foundation, the Access Premier brings a new level of value to Class C motorhomes.



Recognized Quality The RV Dealers Association bestows its annual Quality Circle Award based on dealer ratings to the manufacturers that provide exceptional products, service and support. Only one manufacturer has received this honor for seventeen consecutive years: Winnebago Industries.®



On the cover: 26QP Mahogany Full-Body Paint

26QP Sonoma with Coffee-Glazed Vienna Maple Cabinetry

Discretionary Buyer

The Access® Premier continues to exceed expectations for style, comfort, and value. This year, LED ceiling lights and MCD solar/blackout roller shades come standard and Ultraleather™ seating is available to give your furniture added upscale appeal. You will also appreciate the dash appliqué and beautiful Forest Cherry or Coffee-Glazed

Vienna Maple cabinetry. Outside, a powered patio awning and your choice of deluxe graphics or full-body paint set the stage for an amazing adventure. With Winnebago Industries'® legendary SuperStructure® as its foundation, the Access Premier brings a new level of value to Class C motorhomes.



Recognized Quality The RV Dealers Association bestows its annual Quality Circle Award based on dealer ratings to the manufacturers that provide exceptional products, service and support. Only one manufacturer has received this honor for seventeen consecutive years: Winnebago Industries.®



Best in Class

See how Winnebago Industries takes motorhome design and function to the next level, and why we've earned the right to be called the Most Recognized Name in Motorhomes.®



Click on this icon throughout the brochure to link to more information on the web.



The **Lowered Entrance Step** is designed for easy access and eliminates the need for an auxiliary entrance step.



The available **Comfort Sofa Sleeper** quickly converts from a sofa into a comfortable bed that features a self-inflating mattress and pump that automatically reads mattress pressure to maintain your desired setting (NA 31RP).



You'll appreciate the latest in-dash communications technology in the available **Infotainment Center with Rand McNally RV GPS**. It delivers safe and easy trip routing with turn-by-turn voice guidance, an AM/FM radio with a CD/DVD player, and SiriusXM™ availability.



Store extra gear or keep beverages on ice in this **Recessed Storage Compartment** with drain plug. The center compartment cover doubles as a table for outdoor gatherings.



Day or night, the smoothly retracting **MCD Solar/Blackout Roller Shades** give you total control of light and privacy levels.

Best in Class

See how Winnebago Industries takes motorhome design and function to the next level, and why we've earned the right to be called the Most Recognized Name in Motorhomes.®



Click on this icon throughout the brochure to link to more information on the web.



The **Lowered Entrance Step** is designed for easy access and eliminates the need for an auxiliary entrance step.



The available **Comfort Sofa Sleeper** quickly converts from a sofa into a comfortable bed that features a self-inflating mattress and pump that automatically reads mattress pressure to maintain your desired setting (NA 31RP).



You'll appreciate the latest in-dash communications technology in the available **Infotainment Center with Rand McNally RV GPS**. It delivers safe and easy trip routing with turn-by-turn voice guidance, an AM/FM radio with a CD/DVD player, and SiriusXM™ availability.



Store extra gear or keep beverages on ice in this **Recessed Storage Compartment** with drain plug. The center compartment cover doubles as a table for outdoor gatherings.



Day or night, the smoothly retracting **MCD Solar/Blackout Roller Shades** give you total control of light and privacy levels.



26QP Sonoma with Coffee-Glazed Vienna Maple Cabinetry

Whether it's curling up with a good book or a lively family game night, the Access Premier offers a spacious lounge with comfortable furniture to fit your plans. MCD solar/blackout roller shades and LED ceiling lights are some of the premium amenities that allow you to control the level of light and privacy you prefer.



Optional Lounge HDTV



26QP Sonoma with Coffee-Glazed Vienna Maple Cabinetry

Whether it's curling up with a good book or a lively family game night, the Access Premier offers a spacious lounge with comfortable furniture to fit your plans. MCD solar/blackout roller shades and LED ceiling lights are some of the premium amenities that allow you to control the level of light and privacy you prefer.



Optional Lounge HDTV



26QP Galley with Coffee-Glazed Vienna Maple Cabinetry

This full-featured galley sets the stage for delicious family dinners. Standard amenities include a 3-burner range top, vented range hood, cold water filtration system, microwave oven, and a Norcold® double-door refrigerator/freezer.



26QP Pull-Out Pantry



Refrigerator/Freezer



Full-Extension Drawer Slides



26QP Galley with Coffee-Glazed Vienna Maple Cabinetry



26QP Pull-Out Pantry



Refrigerator/Freezer



Full-Extension Drawer Slides

This full-featured galley sets the stage for delicious family dinners. Standard amenities include a 3-burner range top, vented range hood, cold water filtration system, microwave oven, and a Norcold® double-door refrigerator/freezer.



26QP Bedroom

You will feel right at home in the master bedroom, complete with a walk-around queen bed, a generous wardrobe, and optional HDTV. Both the 31RP and 31WP feature a wardrobe slideout with ample room to pack your belongings. The 31RP also offers in-room access to a large bathroom with a curved shower, while the 31WP features a split-aisle bathroom.



31WP Bathroom



31WP Bedroom Wardrobe



26QP Bedroom

You will feel right at home in the master bedroom, complete with a walk-around queen bed, a generous wardrobe, and optional HDTV. Both the 31RP and 31WP feature a wardrobe slideout with ample room to pack your belongings. The 31RP also offers in-room access to a large bathroom with a curved shower, while the 31WP features a split-aisle bathroom.



31WP Bathroom



31WP Bedroom Wardrobe



Rear Storage Compartment



Lowered Entrance Step

Enjoying the outdoors is effortless in the Access Premier. The Smart Storage™ design maximizes every square inch of space, putting all of your gear in easy-to-reach rear compartments. There is even a place to keep your drinks on ice or stow your wet gear, as well as a center compartment cover that can be transformed into a six-foot table. Other popular features include an electric patio awning with LED lighting, a 4,000-watt Cummins Onan® MicroQuiet™ gas generator, and two deep-cycle batteries.



Rear Storage Compartment



Lowered Entrance Step

Enjoying the outdoors is effortless in the Access Premier. The Smart Storage™ design maximizes every square inch of space, putting all of your gear in easy-to-reach rear compartments. There is even a place to keep your drinks on ice or stow your wet gear, as well as a center compartment cover that can be transformed into a six-foot table. Other popular features include an electric patio awning with LED lighting, a 4,000-watt Cummins Onan® MicroQuiet™ gas generator, and two deep-cycle batteries.

Fiberglass Roof

The one-piece fiberglass roof is backed by a 10-year limited parts-and-labor roof skin warranty.

Rubber Can't Cut It Rubber roofs used by competitors can streak and degrade over time.

Thermo-Panel® Sidewalls

By layering fiberglass and high-density block foam insulation with welded aluminum support structures, we create some of the industry's strongest, most durable and lightweight sidewalls.

E-Coating An electrodeposition coating helps protect critical steel components.

Embedded Steel Metal substructures embedded into the sidewall provide solid attachment points to keep cabinets and appliances mounted securely in place.

Solid Framework Aluminum, extruded in our own facility to our exacting standards, creates an extremely strong and solid structural framework.

Laser-Cut Tubing

Precision laser cutters create precise joints in structural steel that are stronger and require less welding.



Interlocking Joints Specially engineered interlocking joints connect the floor, sidewalls and roof where competitors often rely on simple screws to bear the weight.



SUPER STRUCTURE

BUILT TO LAST

Every coach—from our smallest Class C to our largest diesel-pusher model—is built to Winnebago Industries'® legendary SuperStructure® construction standards. It's a process developed and refined over more than 50 years of building some of the strongest, most durable coaches in the industry.

Fiberglass Roof

The one-piece fiberglass roof is backed by a 10-year limited parts-and-labor roof skin warranty.

Rubber Can't Cut It Rubber roofs used by competitors can streak and degrade over time.

Thermo-Panel® Sidewalls

By layering fiberglass and high-density block foam insulation with welded aluminum support structures, we create some of the industry's strongest, most durable and lightweight sidewalls.

E-Coating An electrodeposition coating helps protect critical steel components.

Embedded Steel Metal substructures embedded into the sidewall provide solid attachment points to keep cabinets and appliances mounted securely in place.

Solid Framework Aluminum, extruded in our own facility to our exacting standards, creates an extremely strong and solid structural framework.

Laser-Cut Tubing

Precision laser cutters create precise joints in structural steel that are stronger and require less welding.



Interlocking Joints Specially engineered interlocking joints connect the floor, sidewalls and roof where competitors often rely on simple screws to bear the weight.



SUPER STRUCTURE

BUILT TO LAST

Every coach—from our smallest Class C to our largest diesel-pusher model—is built to Winnebago Industries'® legendary SuperStructure® construction standards. It's a process developed and refined over more than 50 years of building some of the strongest, most durable coaches in the industry.



TESTING Before rolling out of our factories, every coach undergoes an extensive 113-point inspection. Each coach also passes a high-pressure water test that simulates rain at a rate of 50-inches per hour to check for leaks. During the design process, our computer simulations, physical testing center, and rigorous test track ensure each model is built to last.



DETAILS At Winnebago Industries, we treat the features you can't see with the same care as the ones you can. Look in the access panels of some of our competitors' coaches and you'll see loose insulation and wires haphazardly strewn about. Winnebago Industries maintains a clean fit and finish throughout so your coach will last for the long haul.



BUILT IN-HOUSE We extrude our own aluminum. We rotocast our own plastic components. In fact, we manufacture most of our own parts so they are designed to fit the space, rather than fitting the space to an awkward off-the-shelf component size.



**SUPER
STRUCTURE**
BUILT TO LAST

 Visit BetterBuiltRVs.com to gain real insight into what goes into a Winnebago Industries motorhome.

TAKE A TOUR We're proud of our processes, state-of-the-art facilities, and the people who make Winnebago Industries number one. We invite you to visit our complex in Forest City, Iowa, for a first-hand look at the dedication and technology behind every motorhome we build.





TESTING

Before rolling out of our factories, every coach undergoes an extensive 113-point inspection. Each coach also passes a high-pressure water test that simulates rain at a rate of 50-inches per hour to check for leaks. During the design process, our computer simulations, physical testing center, and rigorous test track ensure each model is built to last.



DETAILS

At Winnebago Industries, we treat the features you can't see with the same care as the ones you can. Look in the access panels of some of our competitors' coaches and you'll see loose insulation and wires haphazardly strewn about. Winnebago Industries maintains a clean fit and finish throughout so your coach will last for the long haul.



BUILT IN-HOUSE

We extrude our own aluminum. We rotocast our own plastic components. In fact, we manufacture most of our own parts so they are designed to fit the space, rather than fitting the space to an awkward off-the-shelf component size.



**SUPER
STRUCTURE**
BUILT TO LAST

 Visit BetterBuiltRVs.com to gain real insight into what goes into a Winnebago Industries motorhome.

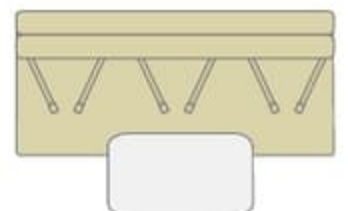
TAKE A TOUR

We're proud of our processes, state-of-the-art facilities, and the people who make Winnebago Industries number one. We invite you to visit our complex in Forest City, Iowa, for a first-hand look at the dedication and technology behind every motorhome we build.

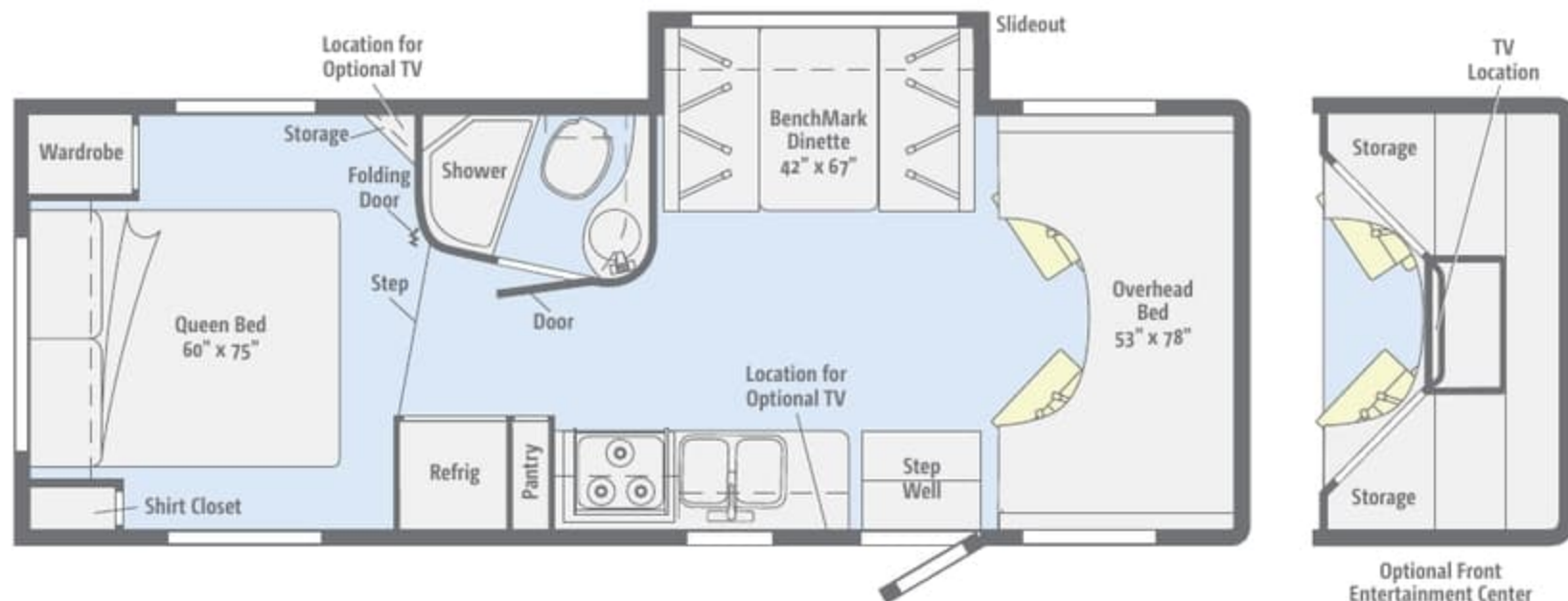


26QP

With a slideout for the BenchMark® dinette or available Comfort Sofa Sleeper, swivel cab seats, a walk-around queen bed, and the option of a front overhead bunk or entertainment center, this floorplan delivers both comfort and space.



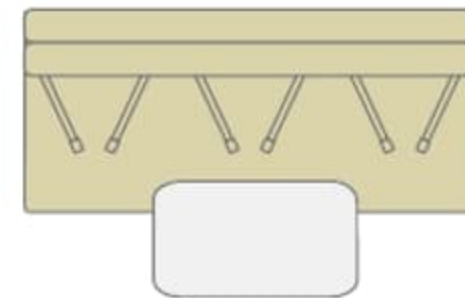
Comfort Sofa Sleeper w/Table 60" x 78"



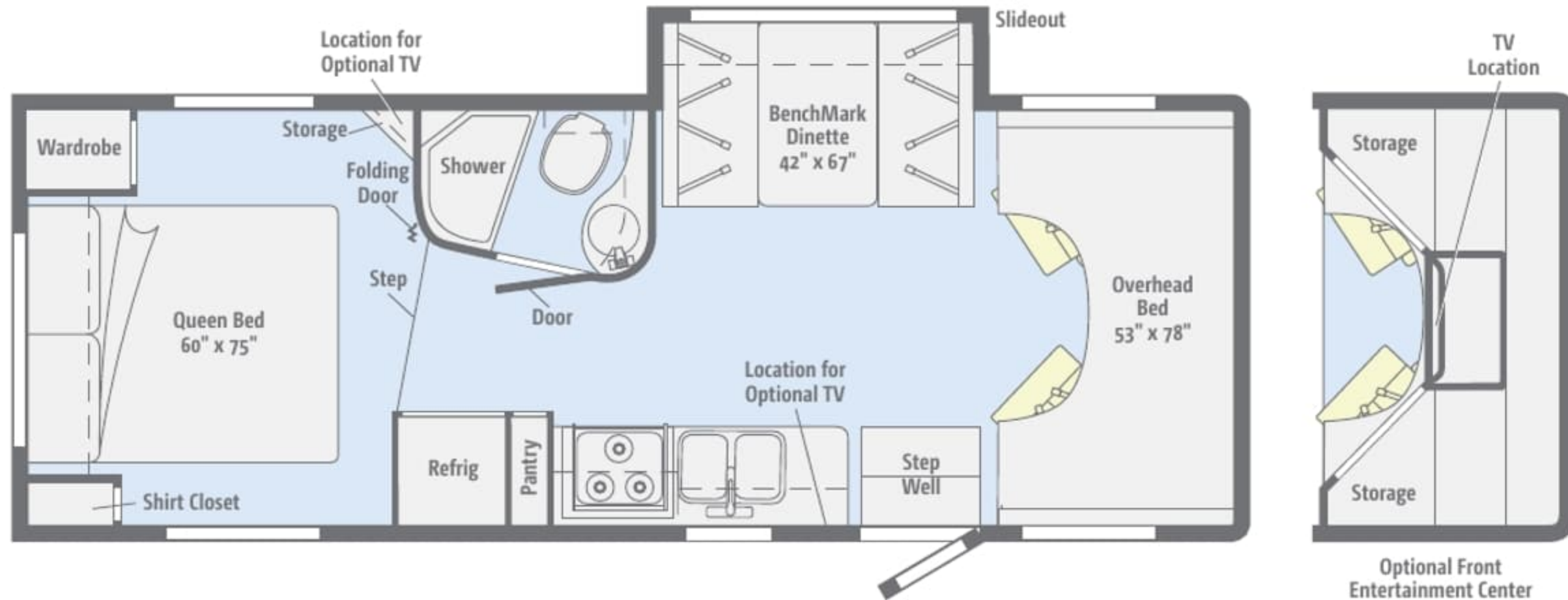
Dimensions shown are for sleeping space only and may vary due to styling differences. Dashed lines denote overhead storage areas. Floorplans and specifications are also available online at GoWinnebago.com.

26QP

With a slideout for the BenchMark® dinette or available Comfort Sofa Sleeper, swivel cab seats, a walk-around queen bed, and the option of a front overhead bunk or entertainment center, this floorplan delivers both comfort and space.



Comfort Sofa Sleeper w/Table 60" x 78"

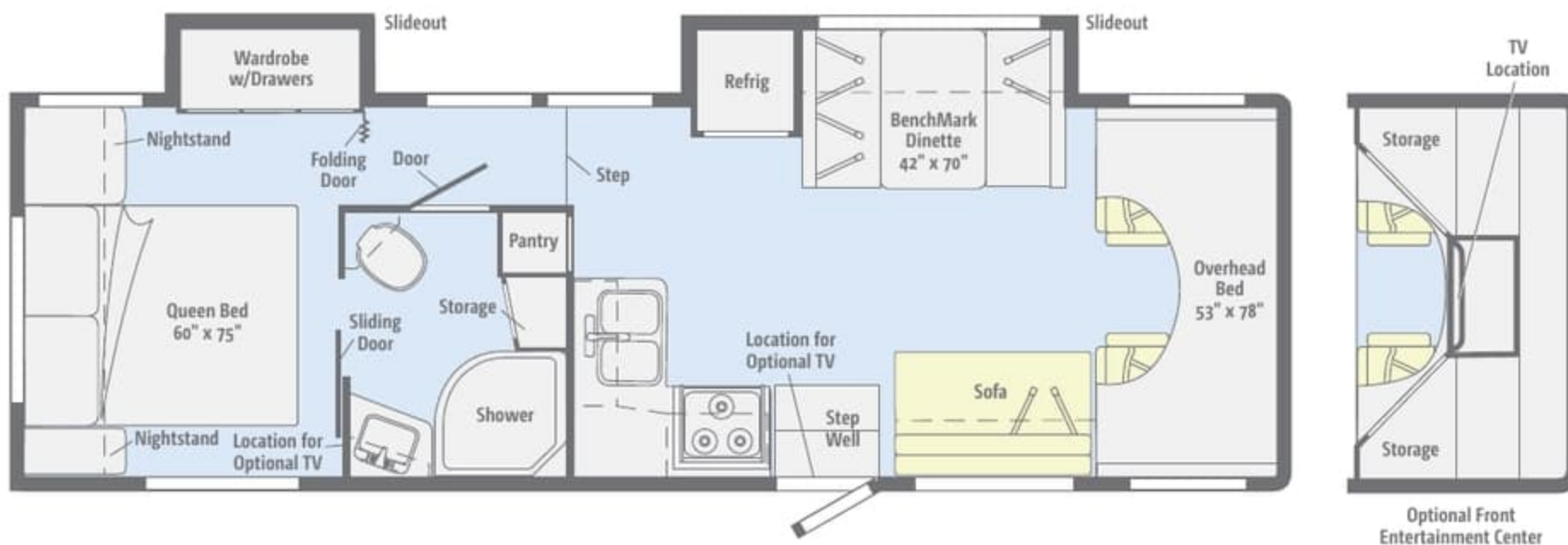


Standard Ultraleather	Optional Ultraleather	Vinyl

Dimensions shown are for sleeping space only and may vary due to styling differences. Dashed lines denote overhead storage areas. Floorplans and specifications are also available online at GoWinnebago.com.

31RP

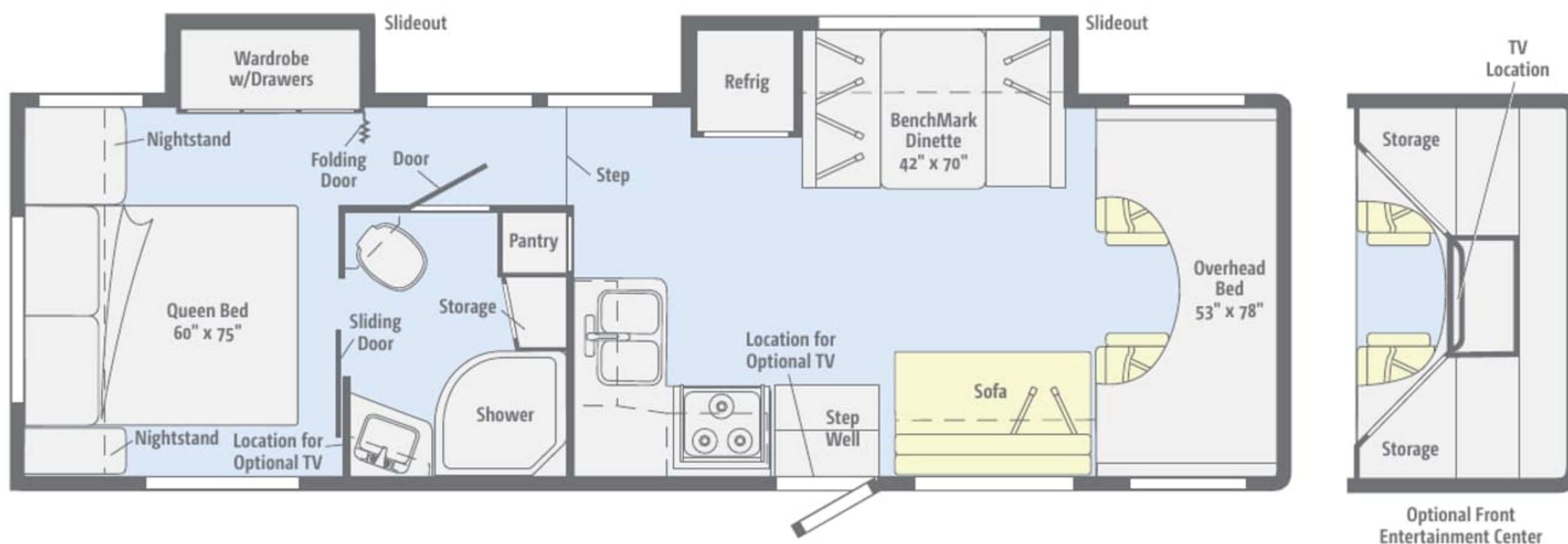
This dual-slideout offers an open lounge space with an L-shaped galley, and a roomy master bedroom with a walk-around queen bed, walk-through bathroom, and large wardrobe.



Dimensions shown are for sleeping space only and may vary due to styling differences. Dashed lines denote overhead storage areas. Floorplans and specifications are also available online at GoWinnebago.com.

31RP

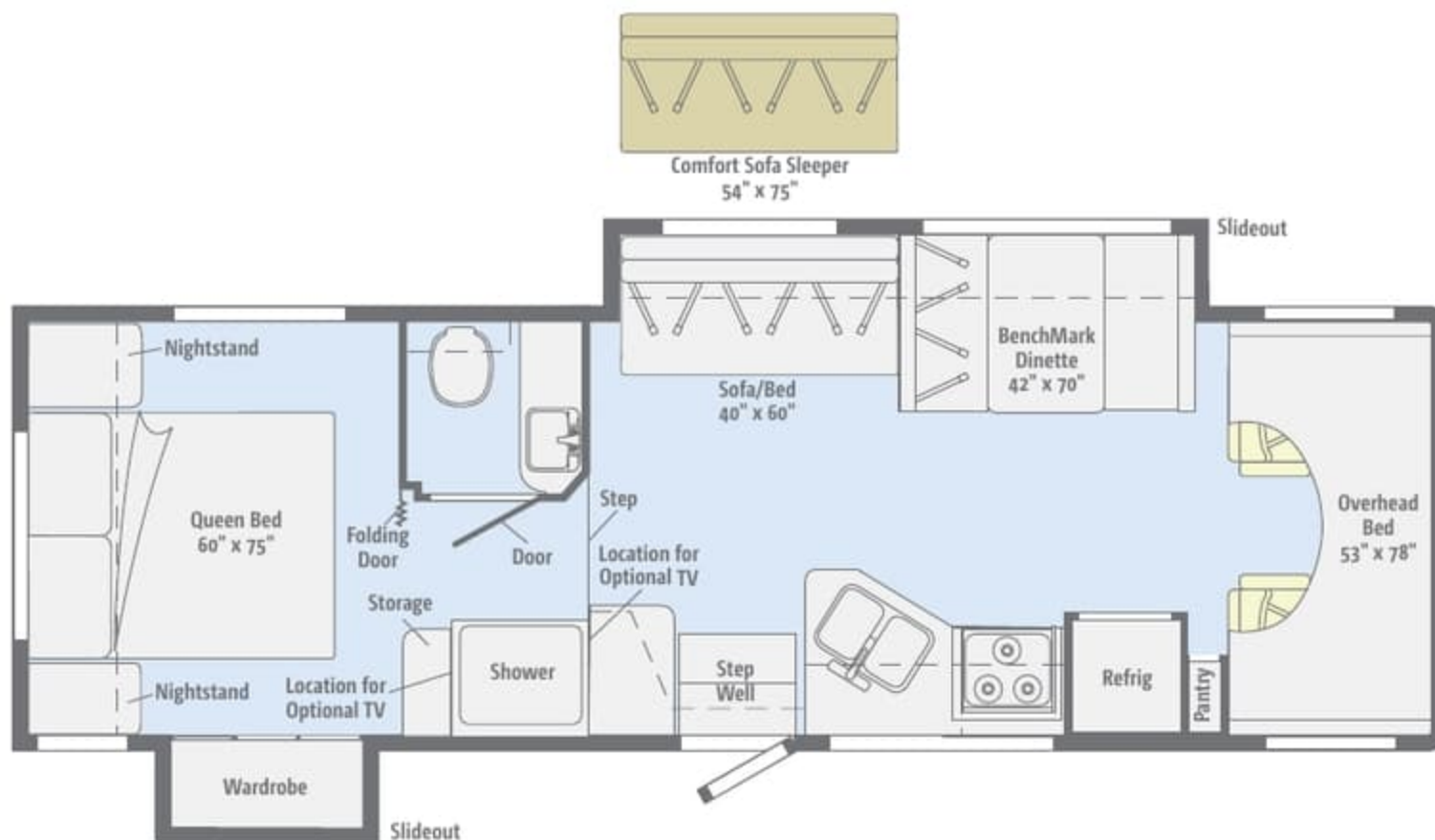
This dual-slideout offers an open lounge space with an L-shaped galley, and a roomy master bedroom with a walk-around queen bed, walk-through bathroom, and large wardrobe.



Dimensions shown are for sleeping space only and may vary due to styling differences. Dashed lines denote overhead storage areas. Floorplans and specifications are also available online at GoWinnebago.com.

31WP

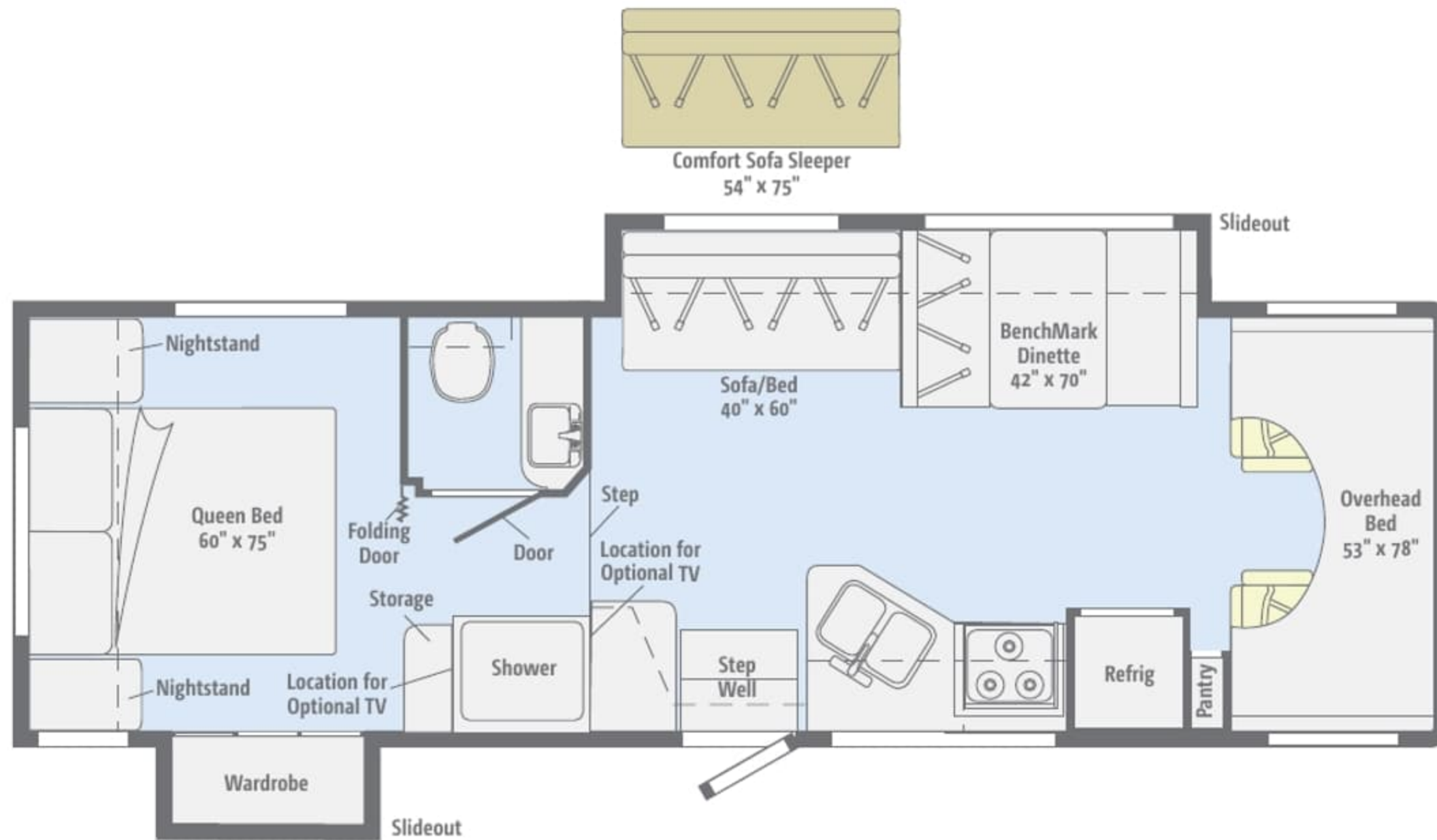
A front slideout with a dinette and sofa/bed creates a comfortable living space, while a spacious master bedroom with a split bath ensures maximum livability in this floorplan.



Dimensions shown are for sleeping space only and may vary due to styling differences. Dashed lines denote overhead storage areas. Floorplans and specifications are also available online at GoWinnebago.com.

31WP

A front slideout with a dinette and sofa/bed creates a comfortable living space, while a spacious master bedroom with a split bath ensures maximum livability in this floorplan.



		
Standard Ultra-leather	Optional Ultra-leather	Vinyl

Dimensions shown are for sleeping space only and may vary due to styling differences. Dashed lines denote overhead storage areas. Floorplans and specifications are also available online at GoWinnebago.com.

Choose from three fabric collections and two wood finishes, each with Satin Nickel hardware.

Four Seasons



Main



Ultraleather



Accent



Bedspread



Omnova Countertop



Wall Board



Carpet



Vinyl



Forest Cherry



Coffee-Glazed Vienna Maple

Choose from three fabric collections and two wood finishes, each with Satin Nickel hardware.

Four Seasons



Main



Ultraleather



Accent



Bedspread



Omnova Countertop



Wall Board



Carpet



Vinyl



Forest Cherry



Coffee-Glazed Vienna Maple

Choose from three fabric collections and two wood finishes, each with Satin Nickel hardware.

Pecan Frost



Main



Ultraleather



Accent



Bedspread



Omnova Countertop



Wall Board



Carpet



Vinyl



Forest Cherry



Coffee-Glazed Vienna Maple

Choose from three fabric collections and two wood finishes, each with Satin Nickel hardware.

Pecan Frost



Main



Ultraleather



Accent



Bedspread



Omnova Countertop



Wall Board



Carpet



Vinyl



Forest Cherry



Coffee-Glazed Vienna Maple



Choose from three fabric collections and two wood finishes, each with Satin Nickel hardware.

Sonoma



Main



Ultraleather



Accent



Bedspread



Omnova Countertop



Wall Board



Carpet



Vinyl



Forest Cherry



Coffee-Glazed Vienna Maple

Choose from three fabric collections and two wood finishes, each with Satin Nickel hardware.

Sonoma



Main



Ultraleather



Accent



Bedspread



Omnova Countertop



Wall Board



Carpet



Vinyl



Forest Cherry



Coffee-Glazed Vienna Maple

Access Premier

Graphics & Paint



The Access Premier comes with deluxe graphics or available full-body paint.



Cobblestone
DELUXE GRAPHICS



Gunmetal
DELUXE GRAPHICS

Access Premier

Graphics & Paint



The Access Premier comes with deluxe graphics or available full-body paint.



Cobblestone
DELUXE GRAPHICS



Gunmetal
DELUXE GRAPHICS

Access Premier

Graphics & Paint



The Access Premier comes with deluxe graphics or available full-body paint.



Mahogany
FULL-BODY PAINT



Sandstone
FULL-BODY PAINT



Magnesium
FULL-BODY PAINT



Vintage
FULL-BODY PAINT

Access Premier

Graphics & Paint



The Access Premier comes with deluxe graphics or available full-body paint.



Mahogany
FULL-BODY PAINT



Sandstone
FULL-BODY PAINT



Magnesium
FULL-BODY PAINT



Vintage
FULL-BODY PAINT



Weights & Measures

Length	27'11"
Exterior Height ¹	11'1"
Exterior Width ²	8'5.5"
Exterior Storage ³ (cu. ft.)	79.2
Awning Length	13'
Interior Height	6'10"***
Interior Width	8'
Freshwater Tank Capacity ⁴ (gal.)	34
Water Heater Capacity (gal.)	6
Holding Tank Capacity - Black/Gray ⁴ (gal.)	30/30
LP Capacity ⁵ (gal.)	18
Fuel Capacity (gal.)	55
GCWR ⁶ (lbs.)	22,000
GVWR (lbs.)	14,500
GAWR - Front (lbs.)	5,000
GAWR - Rear (lbs.)	9,600
Wheelbase	190"

26QP

Length	27'11"
Exterior Height ¹	11'1"
Exterior Width ²	8'5.5"
Exterior Storage ³ (cu. ft.)	79.2
Awning Length	13'
Interior Height	6'10"***
Interior Width	8'
Freshwater Tank Capacity ⁴ (gal.)	34
Water Heater Capacity (gal.)	6
Holding Tank Capacity - Black/Gray ⁴ (gal.)	30/30
LP Capacity ⁵ (gal.)	18
Fuel Capacity (gal.)	55
GCWR ⁶ (lbs.)	22,000
GVWR (lbs.)	14,500
GAWR - Front (lbs.)	5,000
GAWR - Rear (lbs.)	9,600
Wheelbase	190"

31RP

Length	32'
Exterior Height ¹	11'1"
Exterior Width ²	8'5.5"
Exterior Storage ³ (cu. ft.)	83.7
Awning Length	16'
Interior Height	6'10"***
Interior Width	8'
Freshwater Tank Capacity ⁴ (gal.)	34
Water Heater Capacity (gal.)	6
Holding Tank Capacity - Black/Gray ⁴ (gal.)	43/40
LP Capacity ⁵ (gal.)	18
Fuel Capacity (gal.)	55
GCWR ⁶ (lbs.)	22,000
GVWR (lbs.)	14,500
GAWR - Front (lbs.)	5,000
GAWR - Rear (lbs.)	9,600
Wheelbase	215"

31WP

Length	31'8"
Exterior Height ¹	11'1"
Exterior Width ²	8'5.5"
Exterior Storage ³ (cu. ft.)	87.2
Awning Length	15'
Interior Height	6'10"***
Interior Width	8'
Freshwater Tank Capacity ⁴ (gal.)	34
Water Heater Capacity (gal.)	6
Holding Tank Capacity - Black/Gray ⁴ (gal.)	47/41
LP Capacity ⁵ (gal.)	18
Fuel Capacity (gal.)	55
GCWR ⁶ (lbs.)	22,000
GVWR (lbs.)	14,500
GAWR - Front (lbs.)	5,000
GAWR - Rear (lbs.)	9,600
Wheelbase	220"

** 6'4" Rear of coach

Cab Conveniences

Radio/Rearview Monitor System 6" LCD touch screen color monitor, remote, iPod®/MP3 input, color rear camera w/one-way audio

Cab seats armrests, lumbar support, and multi-adjustable slide/recline

3-point seat belts

Swivel/slide driver and passenger seats (26QP)

12-volt powerpoint

Power steering w/tilt and cruise control

Power door locks

Power mirrors w/defrost

Sunvisors

Carpet floor mats

Dash appliqué

OPTIONAL EQUIPMENT

Infotainment Center with Rand McNally RV GPS 6" color touch screen monitor w/split screen function, color rearview camera, AM/FM/CD/DVD player, iPod/USB connections, remote, SiriusXM™ (subscription not included), Rand McNally Tripmaker™ RV safe & easy routing, amenities & tools, trips & content, turn-by-turn voice guidance, Bluetooth™

Chassis

Ford® E450 Chassis 305-hp 6.8L Super-Duty V10 SEFI Triton® engine, TorqShift™ 5-speed automatic transmission w/overdrive, 120-amp. alternator

4-wheel ABS

7-pin trailer wiring

Trailer Hitch® 5,000-lb. drawbar/350-lbs. max vertical tongue weight

Stainless steel wheel liners

OPTIONAL EQUIPMENT

Rear auxiliary air springs



Ford® E450 Chassis

Interior

Amplified digital TV antenna system

Satellite system ready

MCD solar/blackout roller shades (lounge, dinette, and bedroom)

Mini blinds (galley)

Systems monitor panel

Powered roof vent (bath)

Cab divider curtain (NA 26QP)

Front wraparound curtain (26QP)

Bunk privacy curtain

Bunk ladder

Tinted windows

Key-activated slideroom master lock switch

Soft vinyl ceiling



Weights & Measures

Length	27'11"	32'	31'8"
Exterior Height ¹	11'1"	11'1"	11'1"
Exterior Width ²	8'5.5"	8'5.5"	8'5.5"
Exterior Storage ³ (cu. ft.)	79.2	83.7	87.2
Awning Length	13'	16'	15'
Interior Height	6'10"***	6'10"***	6'10"***
Interior Width	8'	8'	8'
Freshwater Tank Capacity ⁴ (gal.)	34	34	34
Water Heater Capacity (gal.)	6	6	6
Holding Tank Capacity - Black/Gray ⁴ (gal.)	30/30	43/40	47/41
LP Capacity ⁵ (gal.)	18	18	18
Fuel Capacity (gal.)	55	55	55
GCWR ⁶ (lbs.)	22,000	22,000	22,000
GVWR (lbs.)	14,500	14,500	14,500
GAWR - Front (lbs.)	5,000	5,000	5,000
GAWR - Rear (lbs.)	9,600	9,600	9,600
Wheelbase	190"	215"	220"

26QP

31RP

31WP

** 6'4" Rear of coach

Chassis

Ford® E450 Chassis 305-hp 6.8L Super-Duty V10 SEFI Triton® engine, TorqShift™ 5-speed automatic transmission w/overdrive, 120-amp. alternator

4-wheel ABS

7-pin trailer wiring

Trailer Hitch® 5,000-lb. drawbar/350-lbs. max vertical tongue weight

Stainless steel wheel liners

OPTIONAL EQUIPMENT

Rear auxiliary air springs



Ford® E450 Chassis

Cab Conveniences

Radio/Rearview Monitor System 6" LCD touch screen color monitor, remote, iPod®/MP3 input, color rear camera w/one-way audio

Cab seats armrests, lumbar support, and multi-adjustable slide/recline

3-point seat belts

Swivel/slide driver and passenger seats (26QP)

12-volt powerpoint

Power steering w/tilt and cruise control

Power door locks

Power mirrors w/defrost

Sunvisors

Carpet floor mats

Dash appliqué

OPTIONAL EQUIPMENT

Infotainment Center with Rand McNally RV GPS 6" color touch screen monitor w/split screen function, color rearview camera, AM/FM/CD/DVD player, iPod/USB connections, remote, SiriusXM™ (subscription not included), Rand McNally Tripmaker™ RV safe & easy routing, amenities & tools, trips & content, turn-by-turn voice guidance, Bluetooth™

Interior

Amplified digital TV antenna system

Satellite system ready

MCD solar/blackout roller shades (lounge, dinette, and bedroom)

Mini blinds (galley)

Systems monitor panel

Powered roof vent (bath)

Cab divider curtain (NA 26QP)

Front wraparound curtain (26QP)

Bunk privacy curtain

Bunk ladder

Tinted windows

Key-activated slideroom master lock switch

Soft vinyl ceiling



LED lighting

Powered ventilator fan (lounge area)

OPTIONAL EQUIPMENT

26" HDTV, stereo system w/AM/FM radio, alarm clock, CD/DVD player and video selection system

Carpet in lounge, dining area and bedroom

Front Overhead Entertainment Center 32" HDTV w/remote, home theater sound system w/AM/FM receiver, DVD player, amplifier speakers, subwoofer, and video selection system (NA 31WP)

Entertainment System 32" HDTV w/remote, swivel and telescoping bracket, home theater sound system w/AM/FM receiver, DVD player, amplifier, video selection system, speakers (5), and subwoofer (31WP)

Tinted, dual-glazed, thermo-insulated windows

Galley

Thermo-formed laminate countertops

Norcold® double-door refrigerator/freezer

Microwave oven

3-burner range top w/storage below

Vented range hood

Range cover

Cold water filtration system

OPTIONAL EQUIPMENT

3-burner range w/oven

Microwave/convection oven

Bath

Thermo-formed laminate countertop

Retractable, self-cleaning shower screen (26QP)

Textured glass shower door (31RP, 31WP)

Flexible showerhead

Skylight

Water pump switch

Porcelain toilet

Bedroom

Queen bed w/foam mattress and bedspread, pillows and shams

OPTIONAL EQUIPMENT

22" HDTV

Exterior

Porch light

Stepwell light

Fiberglass running boards

Rear mud flaps

Powered patio awning w/LED lights

Ladder

Recessed rotocast storage compartments drain plug, cover/30" x 72" folding table

Premium high-gloss sidewall skin

Heating & Cooling System

14,800 BTU roof-mounted air conditioner

30,000 BTU low-profile furnace

Electrical System

AC/DC load center, 45-amp. converter/charger

30-amp. power cord

4,000-watt Cummins Onan® MicroQuiet™ gas generator

TV jack and DC receptacle near entrance door

Two deep-cycle, Group 31 batteries on pull-out tray

Coach battery disconnect system

Auxiliary start circuit

Automatic dual-battery charge control

OPTIONAL EQUIPMENT

1,000-watt DC/AC inverter

Plumbing System

City water hookup

Lockable water tank fill

On-demand water pump

6-gallon LP water heater w/electronic ignition

Winterization Package water heater bypass valve and siphon tube

TrueLevel™ holding-tank monitoring system

Permanent-mount LP tank w/gauge

OPTIONAL EQUIPMENT

Heated electric drainage system

6-gallon 110 V/LP water heater w/electronic ignition, rear auto heater, and Energy Management System

Exterior wash station w/lighted pump switch

Safety

Child seat tether anchor

LP, smoke and carbon monoxide detectors

10 BC fire extinguisher

Ground fault interrupter

High-mount brake lamp

Warranty⁷

12-month/15,000-mile basic limited warranty⁸

36-month/36,000-mile limited warranty on structure⁸

10-year limited parts-and-labor warranty on roof skin⁸

- ¹ The height of each model is measured to the top of the tallest standard feature and is based on the curb weight of a typically equipped unit. The actual height of your vehicle may vary by several inches depending on chassis or equipment variations. Please contact your dealer for further information.
- ² Floorplans feature a wide-body design - over 96" in making your purchase decision, you should be aware that some states restrict access on some or all state roads to 96" in body width. Before making your purchase decision, you should confirm the road usage laws in the states of interest to you.
- ³ The load capacity of your motorhome is designated by weight, not by volume, so you cannot necessarily use all available space when loading your motorhome.
- ⁴ Capacities are based on measurements prior to tank installation. Slight capacity variations can result due to installation applications.
- ⁵ Capacities shown are tank manufacturer's listed water capacity (WC). Actual filled LP capacity is 80% of listing due to overfilling prevention device on tank.
- ⁶ Actual towing capacity is dependent on your particular loading and towing circumstances which includes the GVWR, GAWR, and GCWR, as well as adequate trailer brakes. Please refer to the Operator's Manual of your vehicle for further towing information.
- ⁷ See separate chassis warranty.
- ⁸ See your dealer for complete warranty information.

Winnebago Industries™ continuing program of product improvement makes specifications, equipment, model availability, and prices subject to change without notice. Published content reflects the most current product information at time of printing. Please consult your dealer for individual vehicle features and specifications.



LED lighting

Powered ventilator fan (lounge area)

OPTIONAL EQUIPMENT

26" HDTV, stereo system w/AM/FM radio, alarm clock, CD/DVD player and video selection system

Carpet in lounge, dining area and bedroom

Front Overhead Entertainment Center 32" HDTV w/remote, home theater sound system w/AM/FM receiver, DVD player, amplifier speakers, subwoofer, and video selection system (NA 31WP)

Entertainment System 32" HDTV w/remote, swivel and telescoping bracket, home theater sound system w/AM/FM receiver, DVD player, amplifier, video selection system, speakers (5), and subwoofer (31WP)

Tinted, dual-glazed, thermo-insulated windows

Galley

Thermo-formed laminate countertops

Norcold® double-door refrigerator/freezer

Microwave oven

3-burner range top w/storage below

Vented range hood

Range cover

Cold water filtration system

OPTIONAL EQUIPMENT

3-burner range w/oven

Microwave/convection oven

Bath

Thermo-formed laminate countertop

Retractable, self-cleaning shower screen (26QP)

Textured glass shower door (31RP, 31WP)

Flexible showerhead

Skylight

Water pump switch

Porcelain toilet

Bedroom

Queen bed w/foam mattress and bedspread, pillows and shams

OPTIONAL EQUIPMENT

22" HDTV

Exterior

Porch light

Stepwell light

Fiberglass running boards

Rear mud flaps

Powered patio awning w/LED lights

Ladder

Recessed rotocast storage compartments drain plug, cover/30" x 72" folding table

Premium high-gloss sidewall skin

Heating & Cooling System

14,800 BTU roof-mounted air conditioner

30,000 BTU low-profile furnace

Electrical System

AC/DC load center, 45-amp. converter/charger

30-amp. power cord

4,000-watt Cummins Onan® MicroQuiet™ gas generator

TV jack and DC receptacle near entrance door

Two deep-cycle, Group 31 batteries on pull-out tray

Coach battery disconnect system

Auxiliary start circuit

Automatic dual-battery charge control

OPTIONAL EQUIPMENT

1,000-watt DC/AC inverter

Plumbing System

City water hookup

Lockable water tank fill

On-demand water pump

6-gallon LP water heater w/electronic ignition

Winterization Package water heater bypass valve and siphon tube

TrueLevel™ holding-tank monitoring system

Permanent-mount LP tank w/gauge

OPTIONAL EQUIPMENT

Heated electric drainage system

6-gallon 110 V/LP water heater w/electronic ignition, rear auto heater, and Energy Management System

Exterior wash station w/lighted pump switch

Safety

Child seat tether anchor

LP, smoke and carbon monoxide detectors

10 BC fire extinguisher

Ground fault interrupter

High-mount brake lamp

Warranty⁷

12-month/15,000-mile basic limited warranty⁸

36-month/36,000-mile limited warranty on structure⁸

10-year limited parts-and-labor warranty on roof skin⁸

- 1 The height of each model is measured to the top of the tallest standard feature and is based on the curb weight of a typically equipped unit. The actual height of your vehicle may vary by several inches depending on chassis or equipment variations. Please contact your dealer for further information.
- 2 Floorplans feature a wide-body design - over 96" in making your purchase decision, you should be aware that some states restrict access on some or all state roads to 96" in body width. Before making your purchase decision, you should confirm the road usage laws in the states of interest to you.
- 3 The load capacity of your motorhome is designated by weight, not by volume, so you cannot necessarily use all available space when loading your motorhome.
- 4 Capacities are based on measurements prior to tank installation. Slight capacity variations can result due to installation applications.
- 5 Capacities shown are tank manufacturer's listed water capacity (W.C.). Actual filled LP capacity is 80% of listing due to overfilling prevention device on tank.
- 6 Actual towing capacity is dependent on your particular loading and towing circumstances which includes the GVWR, GAWR, and GCWR, as well as adequate trailer brakes. Please refer to the Operator's Manual of your vehicle for further towing information.
- 7 See separate chassis warranty.
- 8 See your dealer for complete warranty information.

Winnebago Industries™ continuing program of product improvement makes specifications, equipment, model availability, and prices subject to change without notice. Published content reflects the most current product information at time of printing. Please consult your dealer for individual vehicle features and specifications.

GoWinnebago.com Has All The Answers

Visit GoWinnebago.com on your computer, smartphone or tablet for the latest product information and updates.



PREFERRED CARE PROGRAM

We back our motorhomes with best-in-class support both before *and* after the sale:

- 12-month/15,000-mile basic limited warranty
- 36-month/36,000-mile limited warranty on structure
- 10-year limited parts-and-labor warranty on roof skin
- Complimentary 24-hour roadside assistance program



TRIP Saver
FAST TRACK PARTS

- TripSaver® Fast Track Parts guarantees that in-stock warranty parts ship directly to your dealer within 24 hours
- National dealer service network



WIT CLUB

Join the Club, Join the Fun

As a Winnebago motorhome owner, you are invited to join the WIT Club. It's a great way to take full advantage of your new coach and meet fun-loving WIT Club members from across the country who make motorhome adventures a way of life.



Members enjoy:

- Caravans and rallies
- Newsletters
- Local and state group activities
- RV travel benefits

See more at WITclub.com



Grand National Rally

In 1969, two things happened: Neil Armstrong took mankind's first steps on the moon, and Winnebago Industries' WIT Club launched its first Grand National Rally in Forest City, Iowa. Every year since then, thousands of rally-goers connect with old friends to enjoy concerts, tours, activities, and more. Blast off for an adventurous week in July to celebrate 45 years of interstate land roving at the 2014 "Out of This World" Grand National Rally. It's a mission you'll never forget!

GoWinnebago.com Has All The Answers

Visit GoWinnebago.com on your computer, smartphone or tablet for the latest product information and updates.



PREFERRED CARE PROGRAM

We back our motorhomes with best-in-class support both before *and* after the sale:

- 12-month/15,000-mile basic limited warranty
- 36-month/36,000-mile limited warranty on structure
- 10-year limited parts-and-labor warranty on roof skin
- Complimentary 24-hour roadside assistance program



TRIP Saver
FAST TRACK PARTS

- TripSaver® Fast Track Parts guarantees that in-stock warranty parts ship directly to your dealer within 24 hours
- National dealer service network



WIT CLUB

Join the Club, Join the Fun

As a Winnebago motorhome owner, you are invited to join the WIT Club. It's a great way to take full advantage of your new coach and meet fun-loving WIT Club members from across the country who make motorhome adventures a way of life.



Members enjoy:

- Caravans and rallies
- Newsletters
- Local and state group activities
- RV travel benefits

See more at WITclub.com



Grand National Rally

In 1969, two things happened: Neil Armstrong took mankind's first steps on the moon, and Winnebago Industries' WIT Club launched its first Grand National Rally in Forest City, Iowa. Every year since then, thousands of rally-goers connect with old friends to enjoy concerts, tours, activities, and more. Blast off for an adventurous week in July to celebrate 45 years of interstate land roving at the 2014 "Out of This World" Grand National Rally. It's a mission you'll never forget!