

Adventurer



Truck Campers



Adventurer... Be One, Own One!

Product Brochure and Information



Floorplans, Weights & Measures

Matching a Truck to a Camper

Light Weight 1/2 Ton Campers

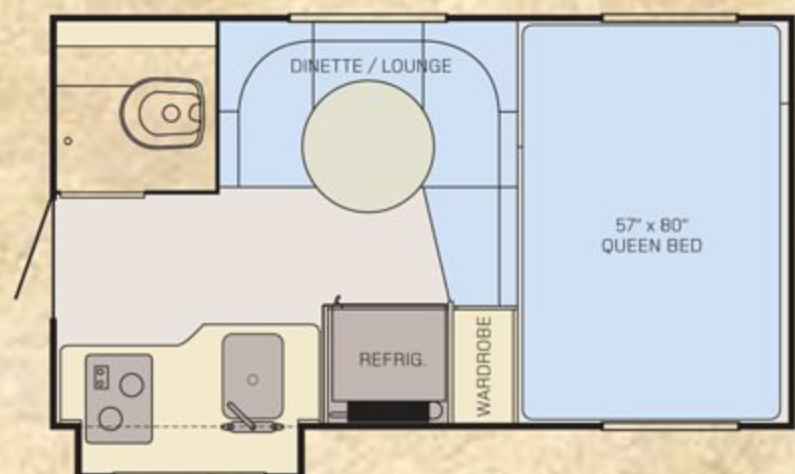
Interiors, Dinettes, Galleys, Bed & Baths

Exclusive, Standard & Optional Features

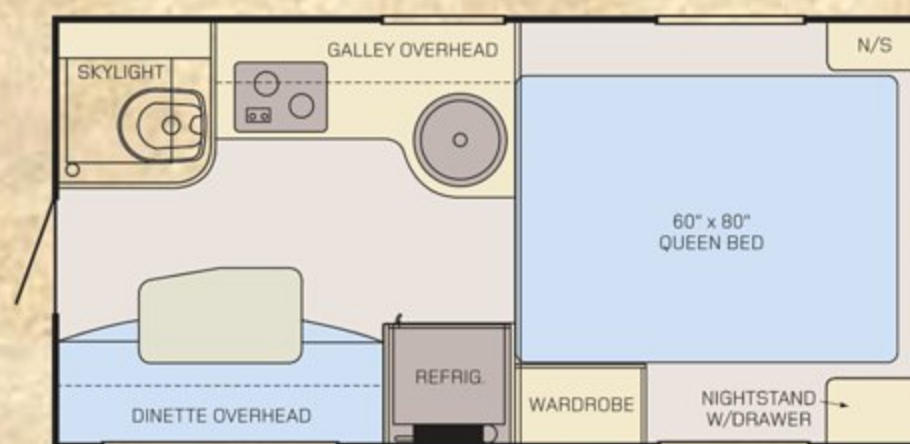
Construction Special Features



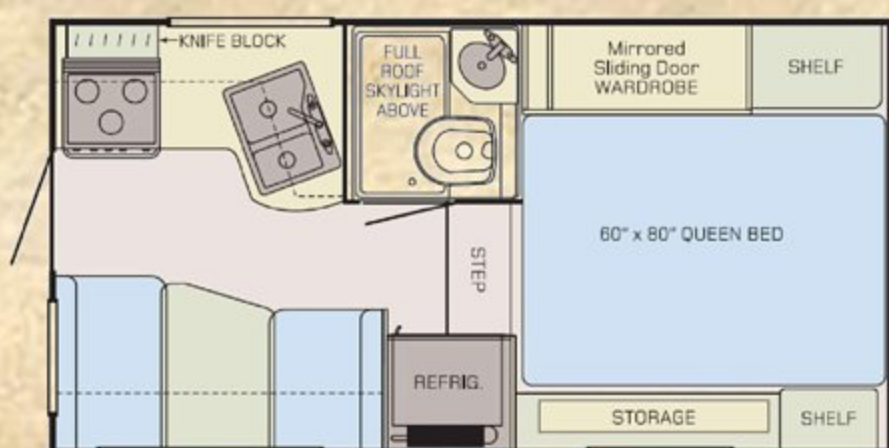
Adventurer Floorplans



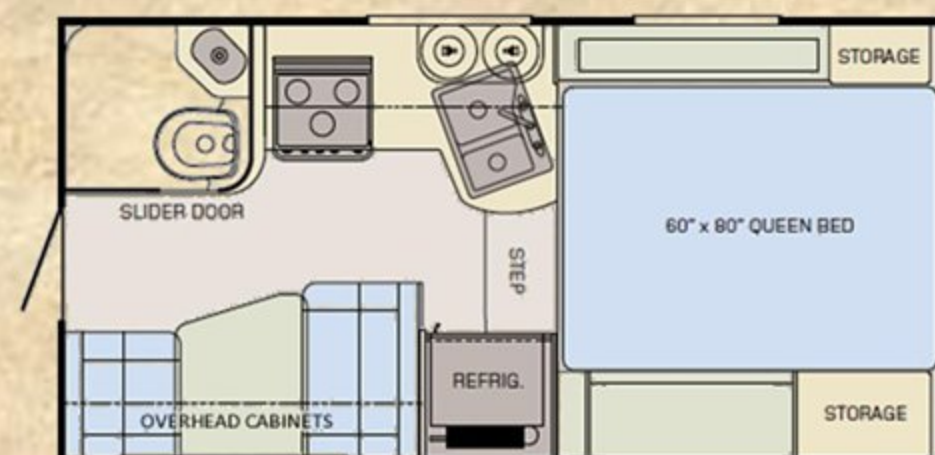
80GS Fits 6' and larger SB Trucks only



80RB Fits 5.5' SB and larger and 8' LB Trucks



86FB Fits SB & LB Trucks 6' and larger



89RB Fits SB & LB Trucks 6' and larger

See "Truck Camper Guide Page" for Matching a Truck to a Camper

Weights & Measures

3 - Year Structural Warranty

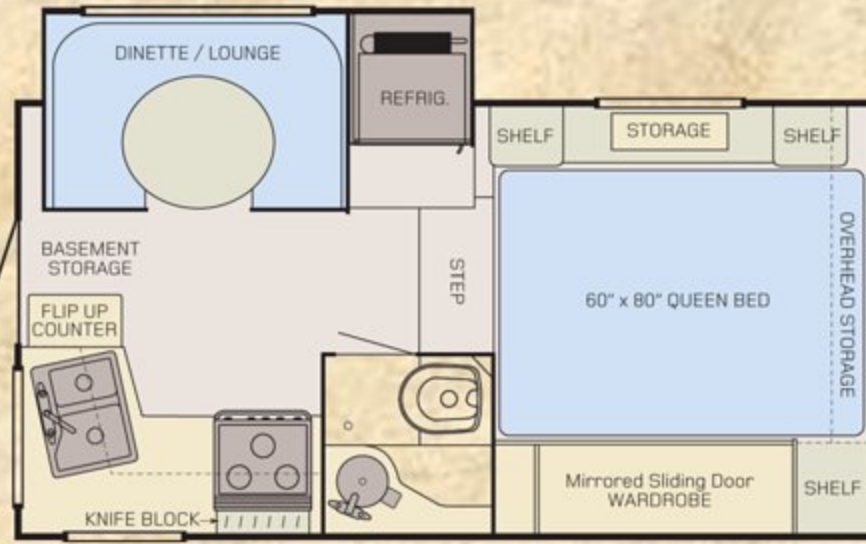
Adventurer Campers provide a 3-year structural warranty. Appliance warranties vary and are set by the respective manufacturer. Please contact your dealer for complete details regarding warranty policies.



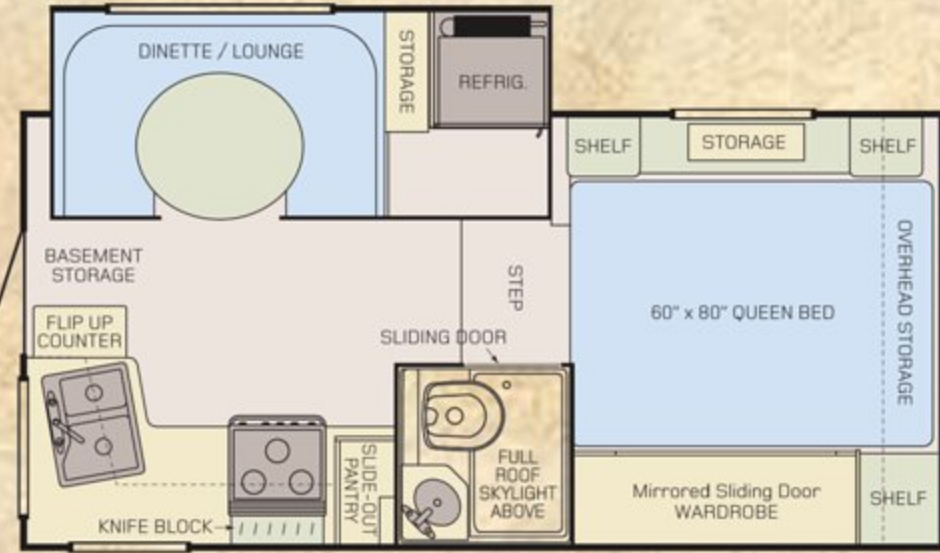
Weights & Measures	80GS	80RB	86FB	89RB
Standard Sleeping Capacity	4	4	4	4
Floor Length	8'	8'	8'6"	8'9"
Exterior Width (inches)	84"	90"	96"	96"
Exterior Overall Length	13'6"	15'4"	15'10"	16'1"
Exterior Height (Floor to top of A/C)	97"	99"	108"	108"
Interior Height (inches)	78"	80.625"	78"	78"
Dinette Size (inches)	34" x 61"	42" x 65"	40" x 72"	40" x 76"
Fresh Water Capacity (US Gallons / Liters)	15 / 57	15 / 57	42 / 159	42 / 159
Grey Water Capacity (US Gallons / Liters)	6 / 23	6 / 23	31 / 117	25 / 95
Black Water Capacity (US Gallons / Liters)	6 / 23	6 / 23	31 / 117	22 / 83
Hot Water Capacity (US Gallons)	4	4	4	4
Refrigerator Size (Cubic Feet)	4	4	7	7
Dry Weight (LBS / Kilograms)	1576 / 715	1668 / 757	2302 / 1044	2358 / 1070
COG (Center of Gravity inches)	35.75"	27.5"	35"	37"

Notice: Adventurer's policy is one of continual improvement and reserves the right to make changes to all features and/or options at our discretion without prior notice and without incurring any obligation. Please confirm all options and/or weights with your dealer or an Adventurer representative.

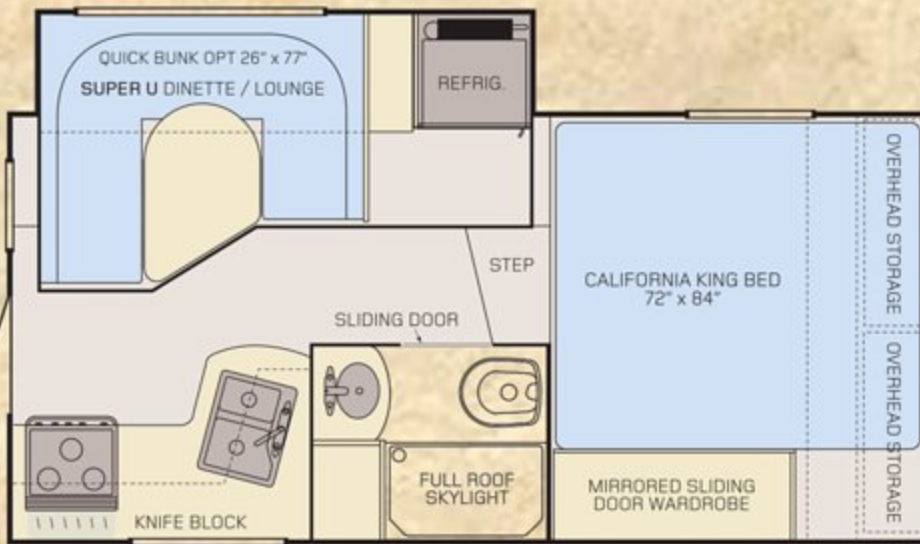
Enhance the Experience...



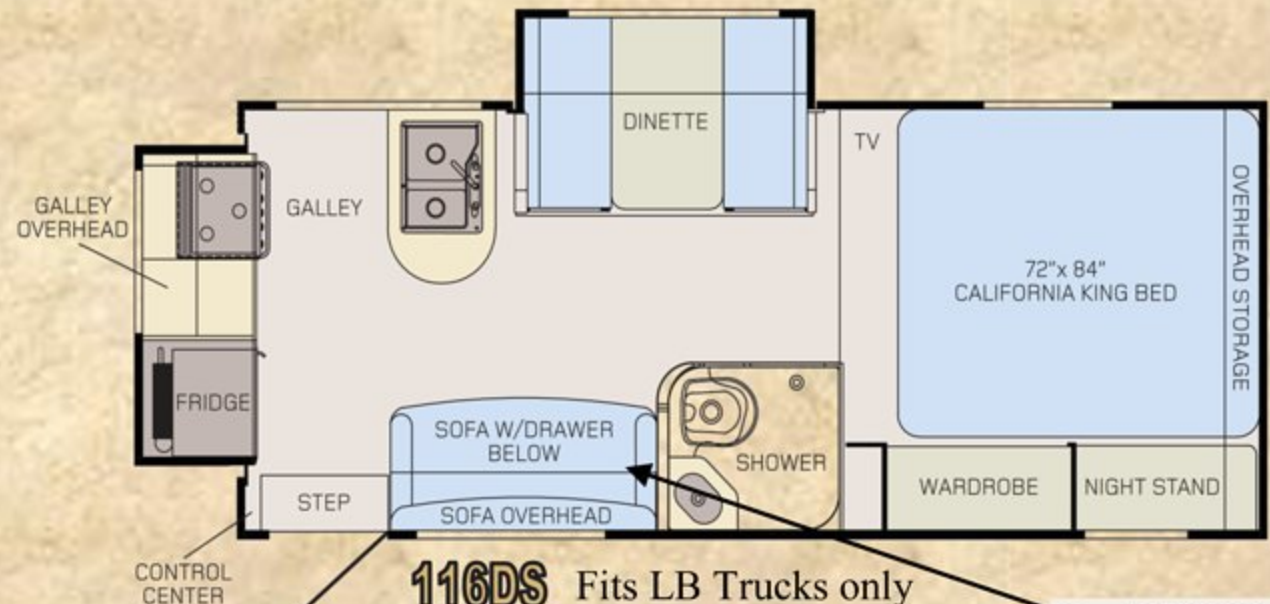
86SBS Fits SB & LB Trucks 6' and larger
Note: Fits SB only w/Gen opt.



910FBS Fits LB Trucks only



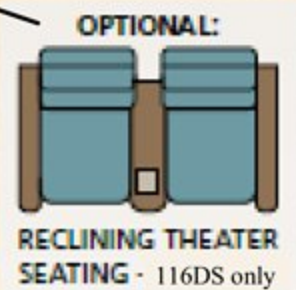
910DB Fits LB Trucks only



116DS Fits LB Trucks only

See "Truck Camper Guide" Page for Matching a Truck to a Camper

Weights & Measures



86SBS	910FBS	910DB	116DS	Weights & Measures
4	4	4	6	Standard Sleeping Capacity
8'6"	9'10"	9'10"	11'6"	Floor Length
96"	96"	96"	96"	Exterior Width (inches)
15'10"	17'4"	17'4"	19'1"	Exterior Overall Length
108"	108"	108"	110"	Exterior Height (Floor to top of A/C)
78"	78"	78"	76"	Interior Height (inches)
43" x 65"	45" x 72"	60" x 72"	43" x 65"	Dinette Size (inches)
44 / 167	44 / 167	44 / 167	44 / 167	Fresh Water Capacity (US Gallons / Liters)
31 / 117	31 / 117	31 / 117	31 / 117	Grey Water Capacity (US Gallons / Liters)
31 / 117	31 / 117	31 / 117	31 / 117	Black Water Capacity (US Gallons / Liters)
6	6	6	6	Hot Water Capacity (US Gallons)
7	7	7	7	Refrigerator Size (Cubic Feet)
2827 / 1282	3031 / 1375	3044 / 1381	3617 / 1641	Dry Weight (LBS / Kilograms)
37"	47"	51"	55.5"	COG (Center of Gravity inches)

NOTICE: Adventurer takes great care in providing accurate truck camper weights and measures information on its units by weighing each camper individually. Please check the wardrobe or closet for an accurate unit dry weight with factory installed options at time of manufacture.

3 - Year Structural Warranty

Adventurer Campers provide a 3-year structural warranty. Appliance warranties vary and are set by the respective manufacturer. Please contact your dealer for complete details regarding warranty policies.

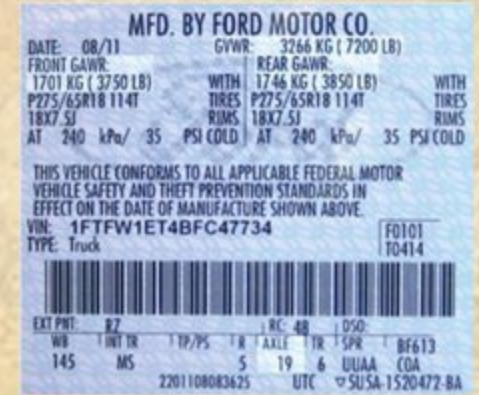


Truck Camper Guide

Matching a Camper to a Truck

When purchasing a Truck Camper there are a few important factors to consider

1. **The payload capacity** – sometimes this rating is posted in the glove box of your truck, if not, another way to determine payload capacity would be to weigh your truck, full of fuel, and then subtract that weight from the (GVWR) posted on the door of your truck (see example to the right) and that difference would equal your payload capacity (weight of camper you can carry). Example, your truck weighs 6800lbs and the GVWR on the door reads 9900lbs your payload would be 3100lbs (9900lbs-6800lbs=3100lbs).
2. **GVWR (Gross Vehicle Weight Rating)** – is the maximum weight the manufacturer rates that truck to carry, including weight of the truck and all people. Cargo, fuel etc.
3. **GAWR (Gross Axle Weight Rating)** – is the maximum rating the manufacturer rates the axles to carry. These ratings are usually posted on the driver's side doorpost. To determine these ratings on your truck with cargo (camper) weigh your truck with just the front and then just the rear axle on the scales. This will give you your axle weights for your truck with your camper, these weight should fall within the manufacturers axle ratings.
4. **Tire capacity (rating of your tire)** – This is the tiny fine print on the sidewall of your tire, (see photo to the right) usually just behind the tire inflation number, this will usually be a direct correlation to the axle ratings and GVWR on new truck. **This will always be your weak link** in your weight carrying capacity and should always be checked before carrying any load, including a passenger car for that matter. ***SAFETY ALERT – Always make certain you choose tires with the proper load capacity to handle whatever load you are carrying with your vehicle!***



5. **COG (Center of Gravity)** – also known as Center of Balance, is the point that the weight of your camper is balanced, ALP notes the COG on every camper with a large red arrow, this is determined as it is weighed and balanced as it goes out the door. Your camper COG should fall into the “Load Range” of your truck, see your owners manual for this measurement. As you can see in this example, to the right, the COG of this camper easily falls into the load range of this truck. As the owner, it is your responsibility not to exceed the weight or COG specifications of your truck when purchasing a truck camper. Always think safety first before loading a camper on your truck. Please consult your dealer, who can help you select aftermarket items designed to aid in proper use of your truck and camper combination.



Suspension Enhancements

Suspension enhancements allow you to manage your load but does not change or add to a trucks GVWR. In some areas you can make upgrades to your truck and then have it inspected by a DOT (Department of Transportation) and you may be able to increase your “legal” GVWR, check with your local DOT for details in your area.

Torklift Stable Loads - We use and recommend this product. Today's truck manufacturers market trucks to be our everyday driver, thus they want the empty loaded truck to be as smooth a ride as possible. To accomplish this they lower the overload spring (the heavy weight bearing springs) 3" to 4" lower to give that smoother ride when empty. The problem with this is when you add any weight to the truck it appears to be sitting low in the rear or “overloaded” since the vehicle has to drop 3 to 4" before it touches the overload spring. Stable Loads by Torklift simply fill this space so that as soon as you add the load, the weight immediately sets on the overload springs allowing your trucks suspension to do what it was designed to do, carry a load, a camper in this case.



Air Bags - We use and recommend air bags also, in the correct application. Some truck manufacturers recommend airbags in all applications and suggest you inflate them 80 to 100 lbs in the bags. **We don't recommend air bags to be used in this way**, because in too many cases, this will raise your camper up off of the suspension causing you to have a spongier unsafe ride! If you choose air bags we only recommend you inflate them so that you are just touching the overload springs of your truck for the best ride and handling characteristics.



Light Weight 1/2 Ton Campers...

POUND FOR POUND the 80GS and 80RB Pack a Punch!

*Looking for the lightest weight, full-featured fiberglass exterior truck campers for your half ton full-size truck? Well, you've found them! The 80RB and 80GS incorporate many truck camper firsts! Special composite panels and building substrates, developed and proven in the automotive and structural housing markets, shed weight while adding incredible strength and impact resistance. **Adventurer's Exclusive TCC Construction** (True-Composite Construction) meticulously bonds these materials together, along with full closed cell block foam insulation and Lamilux 4000 exterior gel-coat fiberglass to create solid and lightweight structural components backed by our **industry-leading 3-Year Structural Warranty**. **Adventurer meets the challenge** of creating a self-contained truck camper with interior shower, hot water tank, furnace, fresh-water foot flush toilet with fresh, grey and black holding tanks, large refrigerator/freezer, and ample storage and built 4-season ready with tanks, water lines all enclosed inside of the unit for year around camping!*



80RB on a 5.5' SB Toyota Tundra

80GS 1576 lbs fits 1/2 ton & larger SB trucks...
(6' to 6.75' SB trucks only)

The 80GS is the only 8' truck camper with a slide-out, full bath with shower and well within the range of all full-sized 1/2 ton trucks!

80RB 1681 lbs fits 1/2 ton & larger trucks...
(Fits super short bed 5.5' to 8' LB beds)

The 80RB is another industry first... This 8' truck camper features a north/south 60x80 queen bed, full bath, shower, sofa and fits all SB & LB trucks including the 5.5' super SB trucks!

Adventurer RV Manufacturers since 1969

Adventurer Dinettes,

89RB Dinette - right - Timberline Interior.

Note the large open living area the 89RB dinette provides for your camping comfort. The large dinette window really opens up this floorplan allowing you to enjoy the great outdoors!

The 89RB also comes standard with the Dream Dinette® which easily makes into a bed with a flip of a lever (see below) and eliminates that annoying table leg, allowing you much more leg room...



89RB Dinette made into bed



89RB Dinette - Timberline interior

910DB Super U-Dinette below right - This floorplan features the largest dinette in the industry. With the sliding D-Style table you can adjust to use as a face to face style or slide out and rotate for use with a group of people (see below). Note the large windows creating the nice open view of your surroundings. In the foreground you see the industry leading 7cu ft refrigerator with an oversized freezer, extra large refer with plenty of storage in the door and extra large crispers at the bottom...



910DB Super U-Dinette - Granite interior

INTERIOR CHOICES



TIMBERLINE INTERIOR



MAPLE INTERIOR



GRANITE INTERIOR

Build Your Own Camper! Learn more at www.AMVR.com

Roomy, Comfortable & Elegant...

TruckCamperMAGAZINE.com

2013 Readers' CHOICE AWARDS



Best Truck Camper
of the Year

2014 Adventurer 116DS



116DS Double Slide Truck Camper - rear to front view
with Maple Interior and optional Theater Seating Recliners

Adventurer's first ever double slide truck camper, is an industry first, and voted Truck Camper Magazine's Truck Camper of the year by their readers for a good reason. This camper is unique in design with its rear slide-out & peninsula galley, exceptionally large windows and the fact this camper is fully usable with both slides in the in (closed) position! When you see the large roomy Dream Dinette® in the second slide-out or the standard sofa that both make into additional beds to sleep up to 6, you too will agree this is definitely an industry leader! Also note the optional Theater Seating in this photo truly making this your home away from home...



116DS Dinette - with Maple Interior



80GS Dinette - Maple Interior



89RB Dinette made into bed



80RB Dinette/Sofa - Granite Interior

Alpena RV Manufacturers since 1969

Galleys Engineered to Please...

Galley 86SBS - right - with Granite Interior

The 86SBS galley is one of the main reasons this floorplan has been our #1 selling slide-out model. Look at the abundant counter space, plentiful drawers & storage and the convenient counter top extension for even more counter space when needed.



86SBS Galley - Granite Interior



116DS Galley - Maple Interior

Galley 116DS - above - with Maple Interior

This rear slide-out galley is an innovative design in the truck camper industry. With its peninsula countertop you enjoy an open but private galley area for the chef in you to create those family favorite dinners or those romantic evenings in.



89RB Galley - Timberline Interior

Galley 89RB - above - with Timberline Interior

The 89RB galley has been a hit from day one with all of the counter space, abundant drawers and storage. With the forward galley design and larger windows, you really feel the open space while enjoying the great view outdoors...



80RB Galley - Granite Interior

Galley 80RB - above - with Granite Interior

This beautiful floorplan has a very open galley design for an 8' camper. Note the L-design allowing you more counter space, all the while giving you the wide open feeling, making the 80RB feel like a much larger camper!



Cook in & Dine out... camping the most relaxing place to get-away from it all and enjoy God's great outdoors!

Queen and King Bed Suites...

116DS California King Bedroom Suite - right

Features large double door wardrobe storage, nightstand and dual windows for cross ventilation, overhead storage and a 72"x84" California King pillow top mattress! (Shown here with optional Heki skylight).

86SBS Queen Bedroom Suite - below - Timberline Interior



Timberline Interior



Maple Interior



Timberline Interior

80GS - right

Note the roomy east/west bedroom with the optional Camper Caddy for additional storage.

Dinette Bed - left



80GS - Maple Interior - Optional Camper Caddy

Comfortable Spacious Baths...



Adventurer Truck Campers - bathrooms are spacious and designed for easy care and ease of use. Some models, like the **116DS & 910DB** are equipped standard with our exclusive full roof skylight allowing more head room and a whole new dimension of space and light. Full one-piece fiberglass shower stalls are standard in most models. The **910DB** comes complete with a large dry bath including plentiful storage, a separate tub/shower and a porcelain style foot flush toilet...



Build Your Own Camper! Learn more at www.AMRCam.com

Exclusive, Standard & Optional Features

EXCLUSIVE FEATURES

ALP Exclusive – 3-Year Structural Warranty - See details on next page

ALP Exclusive - TCC® Construction – superior strength, construction - See details on next page

ALP Exclusive – Front Camper Guides - Nylon guide centers your camper between your wheel wells

ALP Exclusive – Twenty-Six inch “Friction Hinge” entry door, stays where you put it in windy conditions, no catches to break

ALP Exclusive – Flame-treated fabric upholstery



Camper Guides

NEW FEATURES

NEW – Systems Control Center

NEW – Digital HD “Concealed” interior mount TV antenna optional – no TV antenna on the roof, better reception

NEW – Detachable 30-amp 110V power cord



Friction Hinge Door

INDUSTRY LEADING STANDARD FEATURES

New Generation Happi-Jac Wireless remote electric Jacks

High gloss gel-coat fiberglass exterior

LED exterior lighting

2” TCC® laminated walls, floors and roof with 4-Season insulation - See details on next page

One-piece seamless TPO (Thermal Poly Olefin) insulated roof with 12-year manufacturer warranty

Dream Dinette – no annoying table leg in the way – easily converts into a bed with the flip of a lever

Dometic **Seven-Cubic Foot** double door refrigerator

All wood full extension drawers with ball-bearing metal guides

Pillow Top Mattresses

Shurflo **Quiet Revolution** DSI water pump

LED interior and exterior lighting for minimal battery draw

45-amp electronic power converter with “Smart” battery charger

12V battery disconnect switch

Automatic changeover LPG regulator (where applicable)

Large folding entry assist handle (n/a 80GS & 80RB)

Custom keyed deadbolt entry lock - Safer more secure.

ADDITIONAL STANDARD FEATURES

Exterior sewer hose carrier

Sealed three-burner cooktop (Select models)

Hardwood cabinet doors and face frames

Residential-style cabinet hardware

Sink cover cutting board

Residential Designer No-wax industrial grade vinyl flooring

Dark Tinted safety glass windows

Night shades for all windows (mini blind in kitchen to meet code)

Fire Extinguisher, LPG, Carbon Monoxide and Smoke detectors

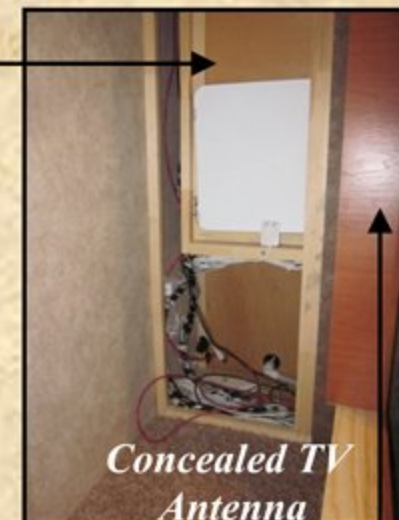
Emergency cabover egress

Brighter and safer LED Porch, tail, clearance and back-up lights

110V GFI-protected patio and galley outlets (select models)



Detachable Power Cord



Concealed TV Antenna



Opt - Comfort Step Bumper

Optional Equipment

- 19” & 24” LCD 12v TV’s (select models)
- Air Conditioner - 11,500 btu
- Awning Patio 12V Electric (116DS)
- Awning Patio Box – 8’ (n/a 116DS)
- Awning – 7’ Carefree Rear 12V Power Awning (select models)
- Awning-Slide Topper (select models)
- Black Tank Flushing System (select models)
- Camper Caddy® Storage System (80GS, 80RB)
- Comfort Step® Bumper (select models)
- Exterior BBQ Quick Disconnect (select models)
- Fantastic Fan (std 80GS)
- Fold Down Bunk in Slide (slide out models only / n/a 80GS)
- Generator Ready (select models)
- Generator-Onan 2500W LP (select models)

Optional Equipment - continued

- Heki® Skylight (select models)
- Jack Brackets-Swing Out Dually
- Microwave Oven (n/a 80GS)
- New Gen - Happijac Electric Jacks – Wireless Remote
- Roof Ladder “Phat® Ladder (select models)
- Short Box Ext Storage - Req w/Gen option on 86SBS
- Shower-Outside
- Solar Panel – 100 Watt w/Regulator
- Stereo-AM/FM/CD/DVD/BLUETOOTH W/Ext Speakers
- Theater Seating Recliners (116DS only)
- TV Antenna-Digital HD – concealed Interior mount
- Windows - Thermopane Dark Tinted

NOTICE: Adventurer (ALP), whose policy is one of continuous improvement, reserves the right to change any of the specifications without prior notice and without incurring any obligation. Even though we take great care in providing accurate information, errors and omissions can and will occur and photos may not be of current model year. If you have any questions about our product line, please don't hesitate to contact your nearest dealer or an ALP representative for current information.

Construction & Special Features

Adventurer TCC Construction



TRU-COMPOSITE® CONSTRUCTION TCC® WOOD



- 1 Closed Cell Block Foam
- 2 High-Gloss Fiberglass Outer Shell
- 3 Wood Frame
- 4 Inside Wall Surface
- 5 Exterior Substrate

Wood Framed TCC® is used on non slide-out models
80GS, 80RB, 86FB, 89RB Utilize both Wood & Aluminum



TRU-COMPOSITE® CONSTRUCTION TCC® ALUMINUM



- 1 Closed Cell Block Foam
- 2 Lumber Core Insert
- 3 Aluminum Tube Frame
- 4 High-Gloss Fiberglass Outer Shell
- 5 Inside Wall Surface
- 6 Exterior Substrate

TCC® Aluminum is used on slide-out models
86SBS, 910FBS, 910DB, 116DS



“We’re satisfied until Cools Better... and Better is Best”

-Erdman Epp

Best Framing

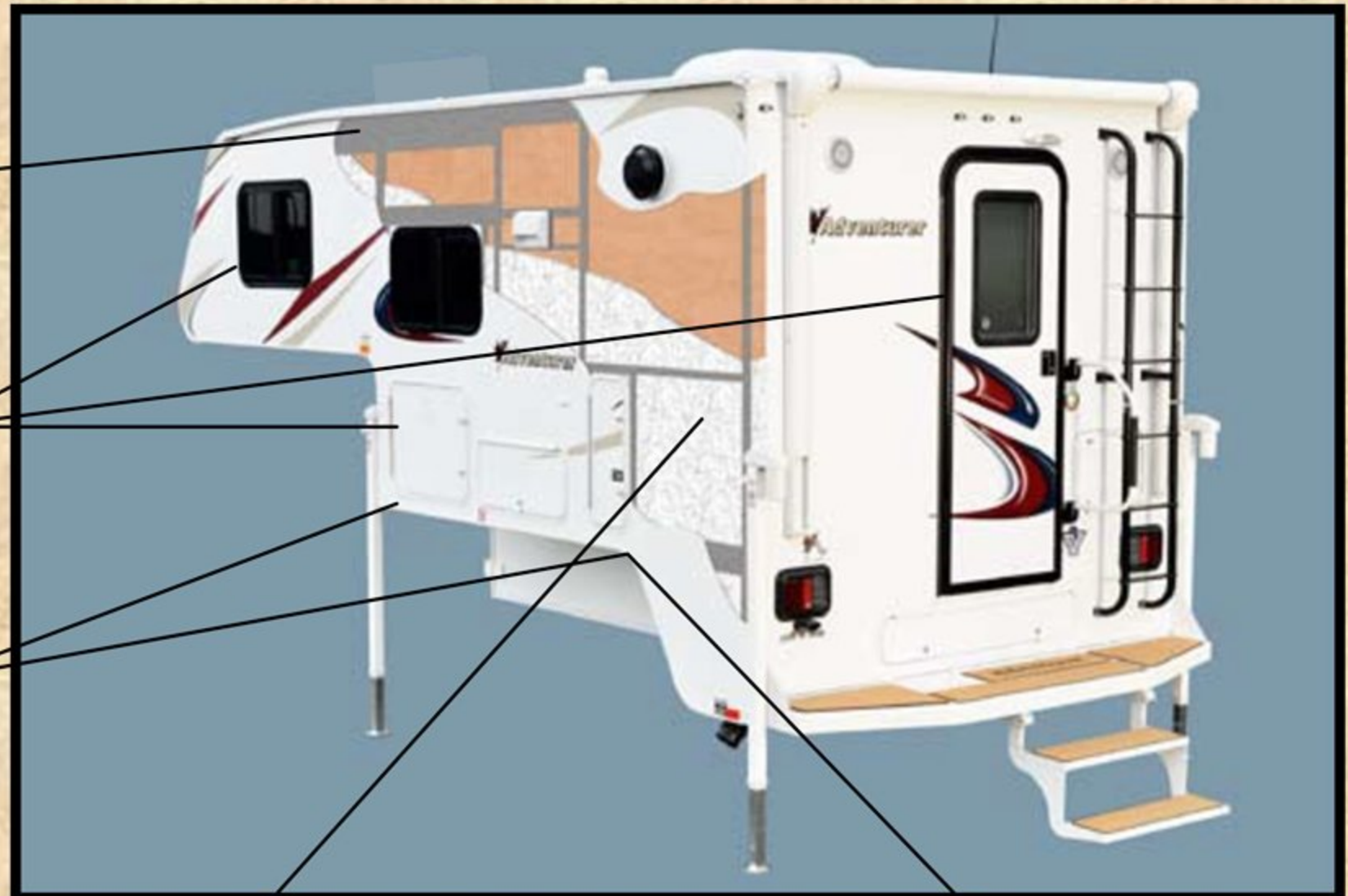
2x4 & 2x2 Aircraft quality welded aluminum framing with lumber core insert for superior strength and structural integrity!

Adventurer frames and gussets around all windows, entry and baggage doors! Windows and doors securely attached to a solid structure, not just a foam wall!



Best Tie-Down Brackets... Adventurer

feels tie-downs are a critical construction area, that is why we use galvanized tie-down brackets bolted through our TCC laminated wing, through angle aluminum with large carriage bolts and body washers giving our Adventurer owners the **Best tie-down attachments in the industry!**



“We’re satisfied until Cools Better... and Better is Best”

-Erdman Epp,



Best Insulation...

Adventurer exclusively uses “Closed Cell” block foam insulation which provides more R-Value per inch than standard foam board. This is the

same foam used to manufacture coffee cups which also does not allow liquid penetration **giving our owners the Best Insulation!**

Best wall supports... Adventurer exclusively

uses “Custom Aluminum Extrusions” creating a solid side wall attachment point that cradles the side wall with full support and then the wall is glued with construction adhesive, clamped and lag screwed together giving our owners the **Best side wall attachment!**



NOTICE: Adventurer (ALP), whose policy is one of continuous improvement, reserves the right to change any of the specifications without prior notice and without incurring any obligation. Even though we take great care in providing accurate information, errors and omissions can and will occur and photos may not be of current model year. If you have any questions about our product line, please don't hesitate to contact your nearest dealer or an ALP representative for current information.

Your Authorized Dealer:

Adventurer **Truck Campers**



Adventurer LP (ALP)

3303 West Washington Ave Yakima, WA 98903

PH: 509-895-7064

For the most current information visit our website at:

www.AMLRV.com

Factory Tours

We invite you to visit our manufacturing facility located in beautiful Yakima, WA.

During your tour you will see Adventurer Truck Campers being assembled with tremendous skill and pride. Tours are available by appointment. Please call for details.

A Premium RV Manufacturer since 1969 - www.AMLRV.com