



Eagle Cap
Truck Campers

Eagle Cap Premium Truck Campers

850
960
995
1160
1165

Product Brochure and Information
Matching a Truck to a Camper
Optional Equipment
Standard Features
Weights & Measures
Interior Colors



A Premium RV Manufacturer since 1969 - www.AMLRV.com

Dare to Compare Page

20 Exclusive Features

Not Available on Other Brands

- 3-Year Structural Warranty
- EC Max - 4-Season Insulated
- One Piece Fiberglass Front Cap
- TCC Construction (True Composite Construction)
- 3M Extreme® Sealed Seams
- All Season Triple ext seals
- Comfort Step Bumper - Optional
- Modular Dinette Furniture
- Theater Seating Recliners - Optional
- 32" TV (Optional 1160&1165)
- Grani-Coat One Pieces Countertops with molded double bowl sinks
- Slam Latches on all Ext Compartment Doors
- Frameless Ext Windows - Thermal Pane
- Concealed TV Antenna - Interior Mount
- Grabber Catches on all Int Doors & Drawers
- Smart Tile Back Splash
- King Bed Models (960)
- Camper Guides
- 26" Entry Doors - Wider Easier Access
- 30,000 BTU Furnace

23 Standard Features

Optional or Not Available on Other Brands

- One Piece Fiberglass Front Cap
- Lamilux 4000 Ext Fiberglass
- Stereo AM/FM/CD/DVD/MP3 w/ext Speakers
- Counter Top Extension
- Heki Skylight Bedroom
- Microwave
- Phat Ladder
- TV Antenna
- Fantastic Fan
- Awning Slide Toppers
- 12V / USB Charging Center
- Gas Filled - Thermal Pane Windows
- Taller Bath Skylights
- 4-Season Insulation - "EC-Max"
- 1" Insulated Ext baggage doors
- Water Heater By-pass Valve
- Winterization Valve
- LED Interior & Exterior Lights
- LED Digital T-Stat- (A/C & Heat)
- Dream Dinette - no annoying table leg
- Sealed Burner Stovetop
- Black Tank Flush System
- Exterior LP Quick Disconnect
- Phat Ladder®

Available Options

- 19" LCD 12V TV
- 32" LCD 12V TV (1160&1165)
- Low Profile A/C w/LED Digital Wall T-Stat
- Generator Ready / Req w/Gen Opt
- Generator-2500W Cummins/Onan LPG
- Jack Brackets-Swing Out Dually
- 12v Power Awning-10' (1160 & 1165)
- Roof Rack System-(Maggie w/Cross Bars)
- Solar Panel - 100 Watt w/Regulator
- Theater seating Recliners (Replaces Sofa 1160& 1165)
- U Shaped Dinette
- Water Filter w/separate faucet
- Wireless Backup Camera - HD Color

3 - Year Structural Warranty

Eagle Cap Camper provides a 3-year structural warranty. All state warranties vary and are set by the respective manufacturer.



BEST INSULATED

PERIOD!

Ceiling - R-19

Walls - R-13

Floor - R-22

30,000 BTU Furnace

Ducted Basement heat

Gas Filled Thermal Pane Windows

Insulated Baggage Doors

Notice

Eagle Cap's policy is one of continual improvement and reserves the right to make changes to all features and/or options at our discretion without prior notice and without incurring any obligation. Please confirm all options and details with your dealer and/or an Eagle Cap representative.

Dare to Compare Page

EAGLE CAP CONSTRUCTION

1. GEL-COAT AERODYNAMIC TWO-TONE FIBERGLASS FRONT CAP!

No other camper is built with these structural components – tougher, stronger, better sealed! This cap is designed to fit perfectly to the contour of our camper providing a tight, perfect fit. You will also note the beautiful two-tone gel-coat finish, adding that high end luxury look, you will not see on any other truck camper!

2. AIRCRAFT QUALITY WELDED ALUMINUM FRAME SUPERSTRUCTURE!

Best aluminum framing techniques - utilizing 2x2 and 2x4 Aircraft Quality Aluminum framing plus ALP's exclusive TCC® bonding process creates a second to none structure and also provides you with our exclusive ALP 3-year structural warranty!

3. ALL SEASON EXTERIOR QUAD SEALING PROCESS!

Four different levels of exterior seals providing the best sealed camper in the industry!

1. All seams/joints sealed with construction adhesive/sealant.
2. One-piece fiberglass cap and seams are sealed with 3M Extreme Seal®, the best sealing tape in the industry!
3. Exterior finish trim is sealed with butyl seal, no putty tape that dries out like other brands!
4. Finish Trim is then silicone sealed.

Four Seals instead of one like other brands... Eagle Cap "Built Like none Other"... you decide!

4. EC MAX – MAXIMUM 4-SEASON INSULATION!

Highest R-Values – We use only Closed Cell Block Foam Insulation, TPO Insulated roof, providing you with R-19 in ceiling / R-22 in the floor / R-13 in the wall. Gas filled thermal pane insulated windows, 1" insulated baggage doors, easy access winterization valves, ducted heat with full basement heat and a 30,000 BTU furnace, all standard, making the Eagle Cap cooler in the summer, warmer in the winter, easier to winterize and providing you the best 4-Season thermal insulated truck camper in the industry!

5. LAMILUX 4000 GEL-COAT FIBERGLASS EXTERIOR WALLS!

Lamilux 4000 fiberglass is not only a high gloss beautiful finish but is also a thicker fiberglass providing you with a stronger wall structure than other campers!

6. FRAMELESS – GAS-FILLED THERMAL PANE WINDOWS!

Eagle Cap is truly built like no other camper and it is only logical that Eagle Cap would have the latest high end luxury "Frameless" windows. Not only are they beautiful but they are actually a true gas-filled thermal pane window meaning they are 4-season insulated and provide you 5 additional R-Values per window over a double pane and 8 more R-Values over a single pane used most in other brands!



Construction Features

1. One Piece Fiberglass Cap
2. Air Craft Quality Aluminum Frame
3. 3M Extreme Seal® Seams
4. Closed Cell Block Foam
5. Gel-Coat Fiberglass Exterior
6. Frameless Thermal pane Windows



**3 - Year
Structural
Warranty**

Eagle Cap
Campers provide
a 3-year structural
warranty
Appliance
warranties vary
and are set by the
respective
manufacturer.

BUILD YOUR OWN CAMPER OR BUY THE BEST AT AMIR.com

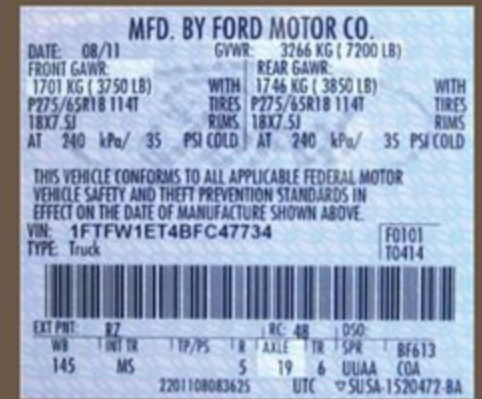


Truck Camper Guide

Matching a Camper to a Truck

When purchasing a Truck Camper, there are a few important factors to consider

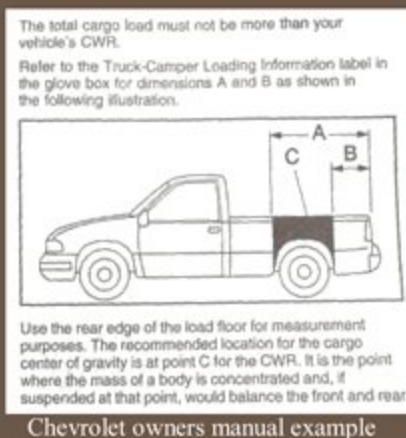
1. **The payload capacity** – sometimes this rating is posted in the glove box of your truck, if not, another way to determine payload capacity would be to weigh your truck, full of fuel, people and of course the dog and then subtract that weight from the (GVWR) posted on the door of your truck (see example to the right) and that difference would equal your payload capacity (weight of camper you can carry). Example, your truck weighs 6800lbs and the GVWR on the door reads 9900lbs your payload would be 3100lbs (9900lbs-6800lbs=3100lbs).



2. **GVWR (Gross Vehicle Weight Rating)** – is the maximum weight the manufacturer rates that truck to carry, including weight of the truck and all people. Cargo, fuel etc.

3. **GAWR (Gross Axle Weight Rating)** – is the maximum rating the manufacturer rates the axles to carry. These ratings are usually posted on the driver's side doorpost. To determine these ratings on your truck with cargo (camper) weigh your truck with just the front and then just the rear axle on the scales. This will give you your axle weights for your truck with your camper, these weight should fall within the manufacturers axle ratings.

4. **Tire capacity (rating of your tire)** – This is the tiny fine print on the sidewall of your tire, see photo to the right, usually just behind the tire inflation number, this will usually be a direct correlation to the axle ratings and GVWR on new truck. **This will always be your weak link** in your weight carrying capacity and should always be checked before carrying any load, including a passenger car for that matter. **SAFETY ALERT – Always make certain you choose tires with the proper load capacity to handle whatever load you are carrying with your vehicle!**



5. **COG (Center of Gravity)** – also known as Center of Balance, is the point that the weight of your camper is balanced, ALP notes the COG on every camper with a large red arrow, this is determined as it is weighed and balanced as it goes out the door. Your camper COG should fall into the “Load Range” of your truck see your owners manual for this measurement. As you can see in this example, to the right, the COG of this camper easily falls into the load range of this truck. As the owner, it is your responsibility not to exceed the weight or COG specifications of your truck when purchasing a truck camper. Always think safety first before loading a camper on your truck. Please consult your dealer, who can help you select aftermarket items designed to aid in proper use of your truck and camper combination.



Suspension Enhancements

Suspension enhancements allow you to manage your load but does not change or add to a trucks GVWR. In some areas you can make upgrades to your truck and then have it inspected by a DOT (Department of Transportation) and you may be able to increase your “legal” GVWR, check with your local DOT for details in your area.

Torklift Stable Loads - We use and recommend this product. Today's truck manufacturers market trucks to be our everyday driver, thus they want the empty loaded truck to be as smooth a ride as possible. To accomplish this they lower the overload spring (the heavy weight bearing springs) 3" to 4" lower to give that smoother ride when empty. The problem with this is when you add any weight to the truck it appears to be sitting low in the rear or “overloaded” since the vehicle has to drop 3 to 4" before it touches the overload spring. Stable Loads by Torklift simply fill this space so that as soon as you add the load, the weight immediately sets on the overload springs allowing your trucks suspension to do what it was designed to do, carry a load, a camper in this case.



Air Bags - We use and recommend air bags also, in the correct application. Some truck manufacturers recommend airbags in all applications and suggest you inflate them 80 to 100 lbs in the bags. **We don't recommend air bags to be used in this way**, because in too many cases, this will raise your camper up off of the suspension causing you to have a spongier unsafe ride! If you choose air bags we only recommend you inflate them so that you are just touching the overload springs of your truck for the best ride and handling characteristics.



Eagle Cap 850 Wet Bath

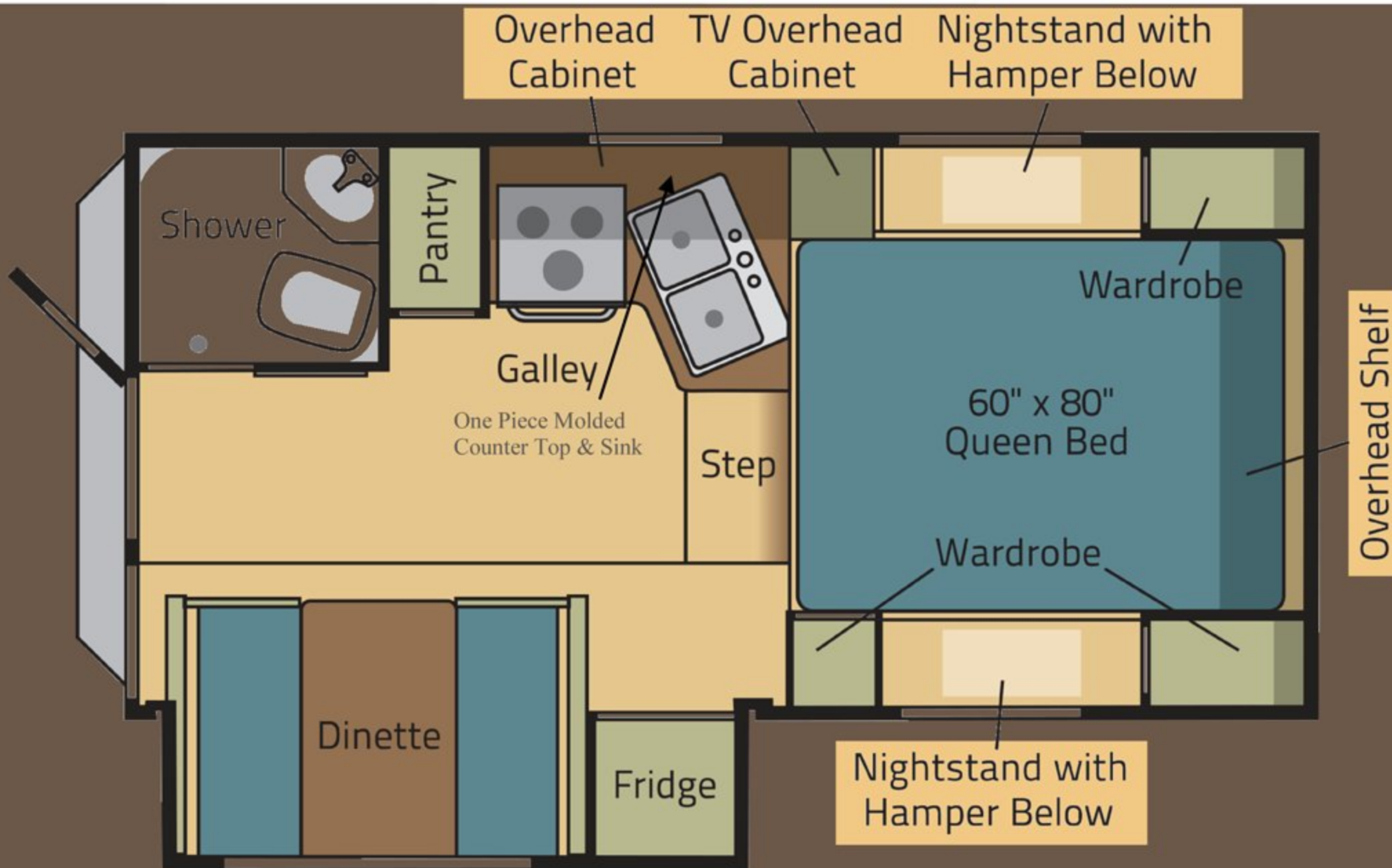


850 Interior Rear Dinette to Front View >>>

Mystic Interior Décor

Specifications

Sleeping	4
Floor Length	8' 11"
Exterior Width	96"
Overall Length	17'3"
Exterior Height (Floor to top of A/C)	108"
Interior Height	76"
Dinette Size	42" x 66"
Fresh Water Capacity US Gallons.	49
Grey Water Capacity US Gallons.	26
Black Water Capacity US Gallons.	22
Hot Water Tank Capacity US Gallons.	6
Refrigerator Size	7cu.ft.
Dry Weight (LBS)	3271
COG (Center of Gravity)	40"



Eagle Cap 850 Floorplan

BUILD YOUR OWN CAMPER NOW VISIT WWW.BUILT-AMERICA.COM

Eagle Cap 960 King Bed

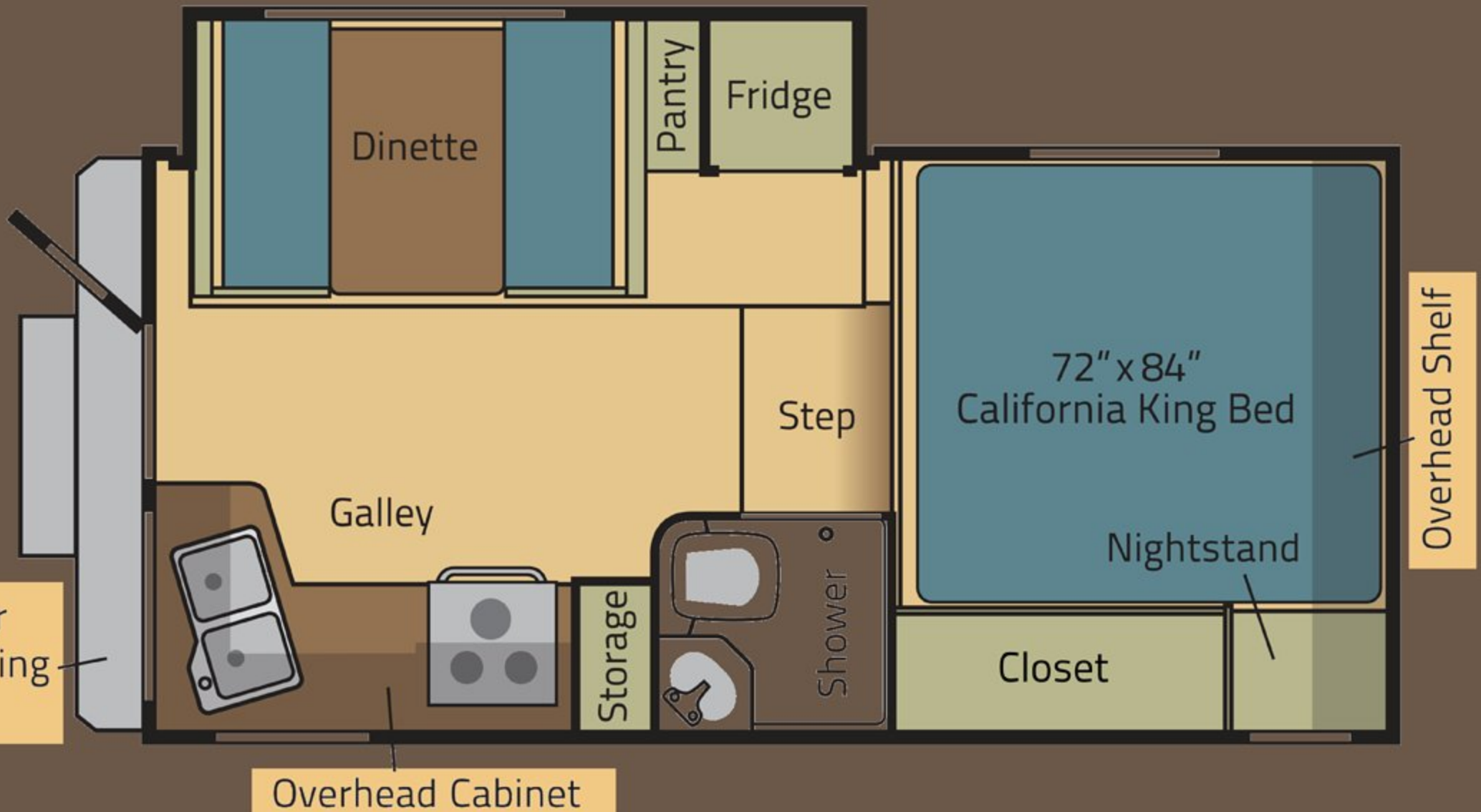


960 Interior Front to Rear View >>>

Silver Leaf Interior Décor

Specifications

Sleeping	4
Floor Length	9'10"
Exterior Width	96"
Overall Length	18'2"
Exterior Height (Floor to top of A/C)	108"
Interior Height	78"
Dinette Size	42" x 66"
Fresh Water Capacity US Gallons.	44
Grey Water Capacity US Gallons.	31
Black Water Capacity US Gallons.	31
Hot Water Tank Capacity US Gallons.	6
Refrigerator Size	7cu.ft.
Dry Weight (LBS)	3514
COG (Center of Gravity)	50"



Eagle Cap 960 Floorplan

BUILD YOUR OWN CAMPER OR RV ONLINE AT AMRV.com

Eagle Cap 995 Dry Bath



↑ **995 Interior Galley**
Silver Leaf Interior Décor



→ **995 Interior Rear to Front View**
Silver Leaf Interior Décor

Specifications	
Sleeping	4
Floor Length	10'2"
Exterior Width	96"
Overall Length	18'6"
Exterior Height (Floor to top of A/C)	108"
Interior Height	78"
Dinette Size	42" x 66"
Fresh Water Capacity US Gallons.	47
Grey Water Capacity US Gallons.	34
Black Water Capacity US Gallons.	22
Hot Water Tank Capacity US Gallons.	6
Refrigerator Size	7cu.ft.
Dry Weight (LBS)	3471
COG (Center of Gravity)	49"



Eagle Cap 995 Floorplan

BUILD YOUR OWN CAMPER OR RV AT HEAT-AMERICA.com

Eagle Cap 1160 Double-Slide

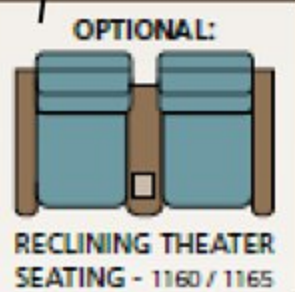
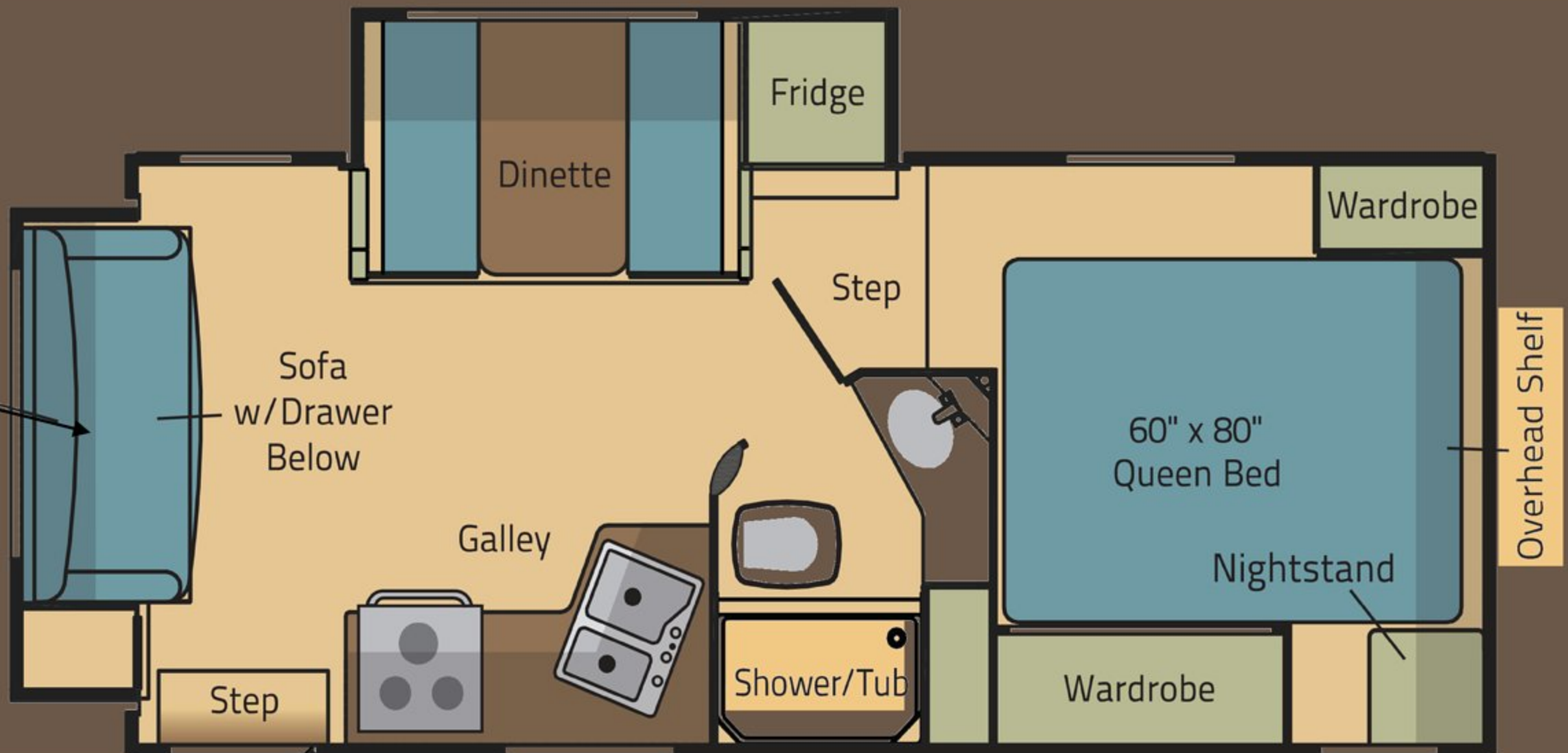


1160 Interior Rear to Front View >>>

Mystic Interior Décor with std face to face dinette and Opt 32" TV

Specifications

Sleeping	6
Floor Length	11'6"
Exterior Width	102"
Overall Length	19'8"
Exterior Height (Floor to top of A/C)	118"
Interior Height	76"
Dinette Size	42" x 66"
Fresh Water Capacity US Gallons.	66
Grey Water Capacity US Gallons.	41
Black Water Capacity US Gallons.	41
Hot Water Tank Capacity US Gallons.	6
Refrigerator Size	8cu.ft.
Dry Weight (LBS)	4480
COG (Center of Gravity)	57"



Eagle Cap 1160 Floorplan

Eagle Cap 1165 Triple-Slide

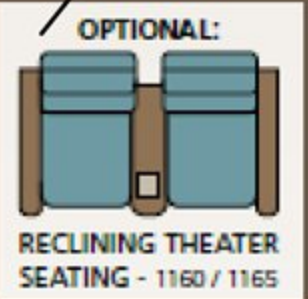
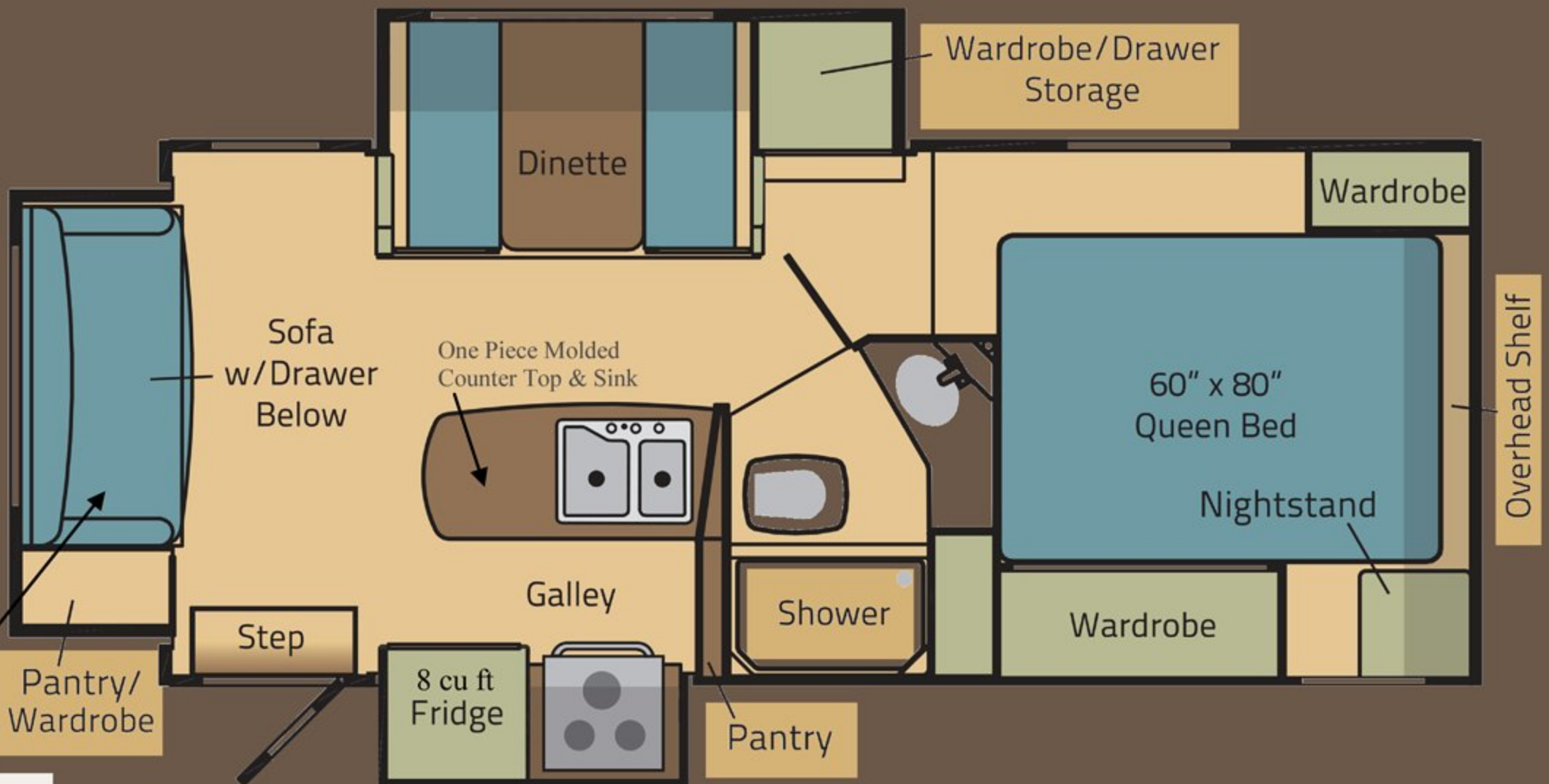


1165 Interior Front to Rear View >>>

Mystic Interior Décor w/Opt Theater Seating

Specifications

Sleeping	6
Floor Length	11'6"
Exterior Width	102"
Overall Length	19'8"
Exterior Height (Floor to top of A/C)	118"
Interior Height	76"
Dinette Size	42" x 66"
Fresh Water Capacity US Gallons.	66
Grey Water Capacity US Gallons.	41
Black Water Capacity US Gallons.	41
Hot Water Tank Capacity US Gallons.	6
Refrigerator Size	8cu.ft.
Dry Weight (LBS)	4738
COG (Center of Gravity)	60"



Eagle Cap 1165 Floorplan

BUILD YOUR OWN CAMPER OR RV ONLINE AT AMRV.com

Standard Features

Exterior

Eagle Cap Exclusive NEW – “Aerodynamic Two-Tone One-Piece Insulated Fiberglass Front Cap” – **EC MAX PKG**

Eagle Cap Exclusive “All Season quad exterior sealing process”

Eagle Cap Exclusive Frameless Windows providing you that high end luxury coach look – **EC MAX PKG**

Eagle Cap Exclusive Super Step® Aluminum step bumper with single 36” folding step

ALP Exclusive TCC® Construction – superior strength, construction and a 3 yr structural warranty

ALP Exclusive – Front Camper Guides

ALP Exclusive – Twenty-Six inch “Friction Hinge” entry door with HD screen door

NEW – Schwintek Electric Slide-out mechanisms

NEW – Detachable 30-amp 110V power cord

NEW – Slam Latch Exterior Compartment Doors – Common keyed

New Generation Happi-Jac Wireless remote electric Jacks

High gloss gel-coat fiberglass exterior

LED exterior lighting

2” TCC® laminated walls, floors and 3” roof with R-13, R-22 and R-19 insulation factor - **EC MAX PKG**

4-Season insulated storage compartment doors – **EC MAX PKG**

Frameless 4-Season gas-filled thermal pane tinted windows – **EC MAX PKG**

One-piece seamless TPO (Thermal Poly Olefin) insulated roof with 12-year manufacturer warranty- **EC MAX PKG**

Exterior sewer hose carrier

STD for 2015 – Diamond Plate Risers

STD for 2015 – Phat® Ladder

STD for 2015 – Awning Slide-Topper

Interior, Galley, Electrical

NEW & STD for 2015 - AM/FM/CD/DVD/MP3/**Blue tooth** w/two exterior speakers

NEW – Solid granite coat counter tops with large **molded double bowl sink**

NEW – Systems Control Center

NEW – 12v/USB Charging Port – charge all of your popular electronics

NEW – Digital HD “Concealed” interior mount TV antenna – no TV antenna on the roof, better reception

NEW – Modular Dinette Furniture - Interchangeable with options like Sofa, Theater Seating etc.

Dream Dinette – no annoying table leg in the way – easily converts into a bed with the flip of a lever

30,000 BTU Thermostatically controlled forced air furnace w/ducted heat– **EC MAX PKG**

Dometic **Seven-Cubic Foot** double door refrigerator (Eight Cubic Foot on 1160/1165)

Sealed three-burner cooktop

Hardwood cabinet doors and face frames

Residential-style cabinet hardware

Sink cover cutting board

Residential Designer No-wax industrial grade vinyl flooring

All wood full extension drawers with ball-bearing metal guides

Night shades for all windows (mini blind in kitchen to meet code)

Pillow Top Mattresse

Shurflo **Quiet Revolution** DSI water pump

LED interior and exterior lighting for minimal battery draw

45-amp electronic power converter with “Smart” battery charger

12V battery disconnect switch

Automatic changeover LPG regulator

STD for 2015 – Fantastic Fan – 3 Speed

STD for 2015 – Microwave

STD for 2015 – Exterior Low Pressure LPG Quick-Disconnect

Safety

Fire Extinguisher, LPG, Smoke, Carbon Monoxide and Smoke detectors

Emergency cabover egress

Custom keyed deadbolt entry lock unique to your unit - Safer more secure.

Brighter and safer LED Porch, tail, clearance and back-up lights

110V GFI-protected patio and galley outlets

Large folding entry assist handle

Flame-treated fabric upholstery



NOTICE: Eagle Cap Truck Campers (ALP), whose policy is one of continuous improvement, reserves the right to change any of the specifications without prior notice and without incurring any obligation. Even though we take great care in providing accurate information, errors and omissions can and will occur and photos may not be of current model year. If you have any questions about our product line, please don't hesitate to contact your nearest dealer or an ALP representative for current information.

Special Features & Options

Eagle Cap Exclusive – Modular Dinette Furniture... An exciting feature for the “Next Generation” Eagle Caps are the new Modular Dinette furniture. The dinette seating is now a modular design, meaning the seat cushion sections are designed to work as a face to face dinette or as a u-shaped dinette. To make into a u-shaped dinette you simply remove the table, add the modular insert and the u-shaped “D” style table and now you have a u-shaped dinette. Best of all our engineering department designed the dinette areas so that our sofa or our optional Theater Seating will fit into this same area simply by unscrewing the dinette modular sections, remove the table and install one of the above options. Want something other than that in your dinette area? Order without the dinette and add what ever you wish, free standing table and chairs, desk, bunk beds you name it!



Eagle Cap’s 12V ELECTRIC REAR AWNING... Enjoy the outdoors with Eagle Cap’s (optional) electric rear awning. With just a touch of a button you can open or close your awning, no more need for two people and with the built-in gas props it handles rainy and windy conditions reducing your typical cause of awning damage. Note the patio box awnings also shown here as another popular option available from Eagle Cap



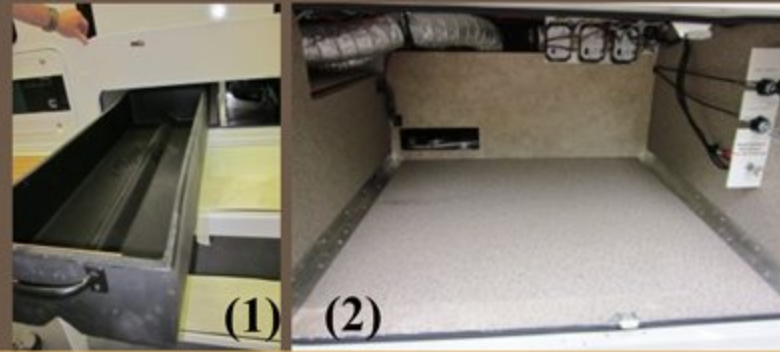
Exterior Detachable Power Cord...

Eagle Cap has added a detachable exterior power cord on all models this year! This new feature ends the frustrating stuffing of the power cord into a small compartment, especially in cold weather.



Abundant Basement Storage...

Fishing gear, water skis and other bulky items are no problem with the standard basement storage tray on the Eagle Cap rear entry models (1) tray size varies by model, or the huge motorhome style cargo bay (2) on the 1160 & 1165.



Water Filter System with separate faucet...

Clean filtered drinking water no longer a worry with the optional water filter system available on all models.



New Eagle Cap 13,500 Low-Profile A/C... See the difference between a standard A/C (in the distance) and the new Eagle Cap 13,500 (HE high efficiency) Low-Profile A/C in this photo, significantly reducing your exterior height.



New – 12V / USB Charging Center...

The world is changing, we have more electronics, gadgets and toys and you have requested the ability to have a charging center in your camper. We added a Charging Center this year, not just a 12v power outlet but it also includes a second USB port for direct USB charging.

New – Slam Latches on all Exterior Compartment doors... Eagle Cap truck campers for 2015 all have the new “Slam Latches”... it’s name says it all, drop the door and it “slams” shut or you can simply gently press it shut for an easy one handed close. The best part of the new slam latches is the ease of opening, simply lift up the single lever handle with one hand and open your compartment door. This makes it easier to load and unload leaving one hand open to carry your items with out having to set them down to open the door.



New – Winegard Digital HD – Concealed Interior Mount TV Antenna... Less holes in the roof and better reception can be a great thing, right? Well we have found a gem of a new item for the “Next Generation” Eagle Cap in a simple little thing like a TV antenna! We have added, as a standard Feature, our new TV antenna. It is an interior/concealed mounted antenna and the best news is it gets dramatically better reception in our testing! Simply put our previous TV antenna inside of our metal R&D building would only receive three very fussy weak channels that you wouldn’t want to watch. This new flat panel TV Antenna in our testing received 32 crystal clear, free digital channels, in the same building and the antenna was mounted inside of the camper, in fact in testing we even stuffed it completely under the mattress and we still received all 32 channels. Best of all, as you can see here, it can be totally mounted behind a wall, concealed and no more holes and one less items on the roof.



Your Authorized Dealer:



1165 Galley/Dinette
Amaretto Decor

Interior Decor Choices

Amaretto

Silverleaf

Mistic



EagleCap

Adventurer LP (ALP)
3303 West Washington Ave
Yakima, WA 98903
PH: 509-895-7064

www.AMLRV.com



Factory Tours

We invite you to visit our manufacturing facility located in beautiful Yakima, WA. During your tour you will see Eagle Cap Truck Campers being assembled with tremendous skill and pride. Tours are available by appointment.

A Premium RV Manufacturer since 1969 - www.AMLRV.com