



HOLIDAY RAMBLER

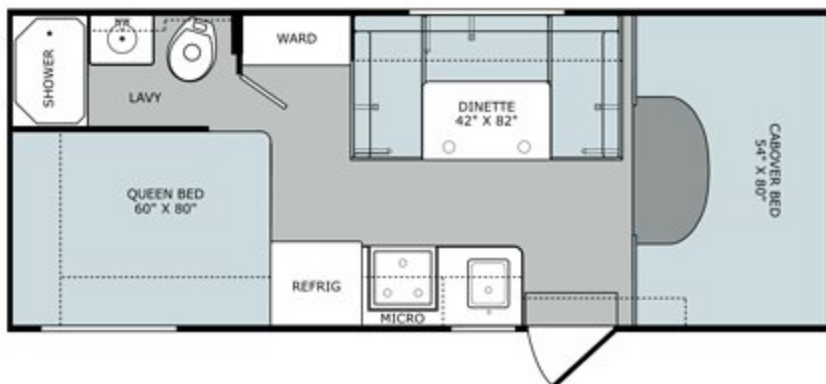
AUGUSTA

2015 HOLIDAY RAMBLER | CLASS C GAS

TOP FEATURES

- Hardwood Cabinet Doors
- High-Gloss Smooth Fiberglass Exterior
- Full Basement Exterior
- LED TVs
- Pass-Through Storage
- PEX Plumbing System
- One-Piece Molded Fiberglass Front End Cap

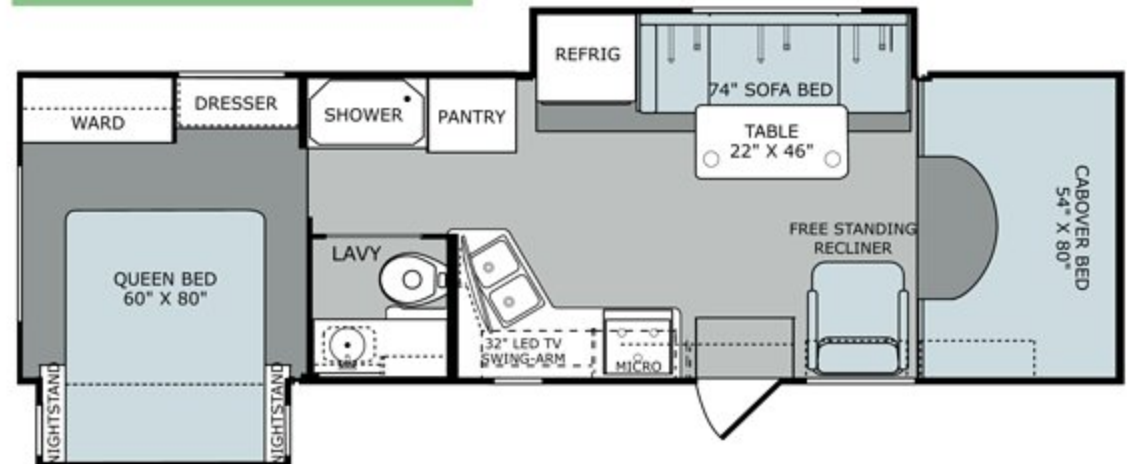
23B



AVAILABLE OPTIONS:

- 078** - 19" LED TV
- 093** - Exterior Entertainment Center

29A



AVAILABLE OPTIONS:

- 093** - Exterior Entertainment Center
- 113** - 3-Burner Range W/Oven

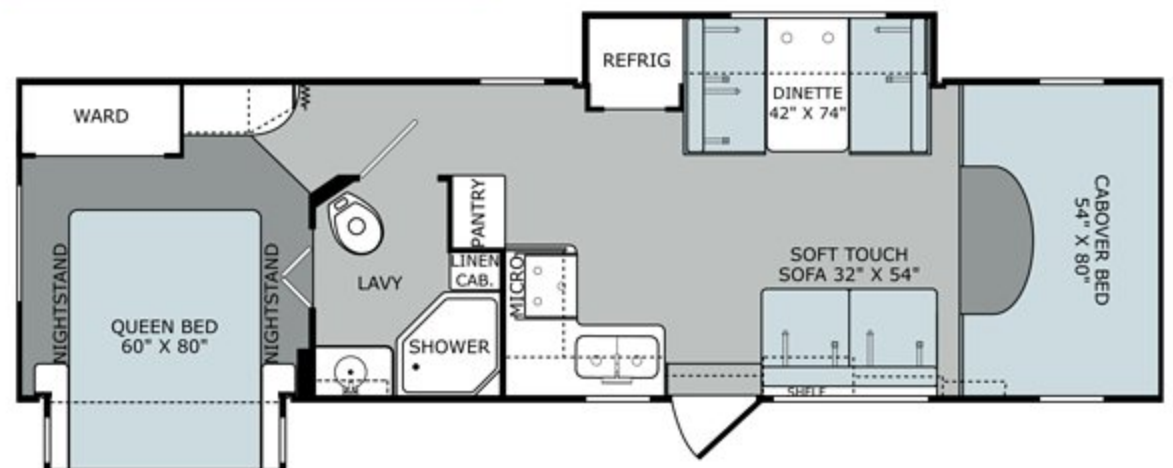
2K



AVAILABLE OPTIONS:

- 078** 19" LED TV
- 093** Exterior Entertainment Center
- 113** 3-Burner Range W/Oven
- 160** Front 28" LED TV

31M



AVAILABLE OPTIONS:

- 078** - 19" LED TV,
- 093** - Exterior Entertainment Center
- 113** - 3-Burner Range W/Oven
- 160** - Front 28" LED TV



HOLIDAY RAMBLER

AUGUSTA

2015 HOLIDAY RAMBLER | CLASS C GAS



WEIGHTS & MEASUREMENTS	E350	E350/E450	E450	E450
MODELS	23B	25K	29A	31M
Wheelbase (inches)	158"	176"	206"	218"
GVWR (lbs) ¹	12,500	12,500/14,500	14,500	14,500
Front GAWR (lbs) ²	5,000	5,000	5,000	5,000
Rear GAWR (lbs) ²	8,500	8,500/9,500	9,500	9,500
GCWR (lbs) ³	17,500	17,500/19,500	19,500	19,500
Hitch Rating Weight (lbs) ^{†, ††}	5,000	5,000	5,000	5,000
Tongue Weight (lbs) [†]	500	500	350	350
Fuel Capacity (gal)	40	40/55	55	55

DIMENSIONS & CAPACITIES	23B	25K	29A	31M
MODELS	23B	25K	29A	31M
Overall Length ⁴	24' 4.5"	26' 2.5"	30' 9.5"	32' 5.5"
Overall Height (with A/C)	11' 6"	11' 6"	11' 6"	11' 6"
Overall Width (maximum) ^{5, 6}	102"	102"	102"	102"
Interior Height (maximum)	82"	82"	82"	82"
Interior Width (maximum)	96"	96"	96"	96"
Patio Awning Width	17'	17' 3"	14'	14'
Interior Storage (cu. ft.)	74	79	134	119
Exterior Storage (cu.ft.)	27	88	98	104
Fresh Water Holding Tank (gal)	50	50	60	60
Grey Water Holding Tank (gal)	36	37	35	35
Black Water Holding Tank (gal)	36	36	35	35
Appliance Propane Tank (gal) (WC) ⁷	14	14	14	14
Water Heater Tank (gal)	6	6	6	6

FORD® E350 CHASSIS

Model: Ford® E350 (23B/25K)
 Alternator: 120 Amp
 Engine: 5.4L Triton V8
 Torque: 350 lb-ft @ 3,250 RPM
 Horsepower: 255HP
 Transmission: 5-Speed, Automatic w/Overdrive

FORD® E450 CHASSIS

Model: Ford® E450
 Alternator: 120 Amp
 Engine: 6.8L Triton V10
 Torque: 420 lb-ft @ 3,250 RPM
 Horsepower: 305HP
 Transmission: 5-Speed, Automatic w/Overdrive

Addendums

1. GVWR (Gross Vehicle Weight Rating) is the maximum permissible weight of this fully loaded motorhome. The GVWR is equal to or greater than the sum of the (UVW) unloaded vehicle weight plus the (OCCC) occupant cargo-carrying capacity*.
2. GAWR (Gross Axle Weight Rating) is the maximum permissible loaded weight a specific axle is designed to carry.
3. GCWR (Gross Combined Weight Rating) is the value specified by the motorhome manufacturer as the maximum allowable loaded weight of this motorhome with its towed vehicle. Towing and braking capacities may be different. Refer to Fleetwood and chassis manufacturer's manuals for complete information.
4. Length measured from front bumper to rear bumper (excludes accessories).
5. Excludes safety equipment and awnings.
6. Motorhomes feature a body width over 96" which will restrict your access to certain roads. Before purchasing, you should research any state and/or province road laws which may affect your usage.
7. Tank manufacturer's listed water capacity (WC). Actual propane capacity is 80% of water listing as required by the safety code.

† The chassis manufacturer recommends the installation of a supplemental brake control system to activate the brakes on the vehicle or trailer you are towing. Hitch receiver ratings expressed are maximum for the hitch receiver installed and may require the purchase of additional equipment that is dependent on the weight of the towed load. Consult with hitch receiver manufacturer for further information.

* UVW and OCCC are found on the label containing the federal certification tag in each RV.

†† The Minimum Towable Load of this vehicle is the available weight capacity, up to GCWR, when the coach is fully loaded to maximum GVWR. However, if the coach is loaded to something less than maximum GVWR, that extra available weight capacity can be added to your Towable Load. For example, if your coach is loaded to 1000lbs less than maximum GVWR, your Towable Load increases accordingly. Do not exceed the hitch rating weight, GVWR or GCWR.

IMPORTANT—PLEASE READ

Product information, photography and illustrations included in this publication were as accurate as possible at the time of printing. For further product information and changes, please visit our website at www.holidayrambler.com or contact your local Holiday Rambler dealer. Prices, materials, design and specifications are subject to change without notice. All weights, fuel, liquid capacities and dimensions are approximate. Holiday Rambler has designed its recreational vehicles to provide a variety of uses for customers. Each vehicle features optimal seating, sleeping, storage and fluid capacities. The user is responsible for selecting the proper combination of loads (i.e., occupants, equipment, fluids, cargo, etc.) to ensure that the vehicle's capacities are not exceeded.

CONTACT US

To locate a dealer near you, visit our website at www.holidayrambler.com or call 1-877-252-4666. We can also be contacted at Holiday Rambler Customer Relations, P.O. Box 1007, Decatur, IN 46733.

ALLIED RECREATION GROUP



©2014 Allied Recreation Group, Inc. Printed in USA.
 Inventory Control Number AUG15F2, 07/14. Model Year 2015, Second Edition.