



**FIFTH WHEEL TOY HAULERS**



# RAPTOR



**AVAILABLE IN 3 HIGH DEFINITION PAINT OPTIONS**



**Keystone RV  
Company**





# RAPTOR

## FIFTH WHEEL TOY HAULERS

THANK YOU NORTH  
AMERICA. ONCE AGAIN,  
YOU HAVE MADE RAPTOR  
A TOP SELLING TOY  
HAULER 10 YEARS RUNNING.

The cutting edge has been freshly sharpened with Raptor's full line of Luxury Toy Haulers. Our ground breaking innovation has resulted in us offering the most luxurious and accommodating toy hauler in the market place today. We have taken Raptor from the rugged in your face toy hauler into a refined residential palace on wheels. Ask your local dealer how you can experience the innovation, value, and performance that is Keystone Raptor.



HIGH GLOSS SIDEWALLS WITH PAINTED FRONT CAP



AGGRESSIVE ORANGE HIGH DEFINITION PAINT



KEYSTONE BLUE HIGH DEFINITION PAINT



RAPTOR RED HIGH DEFINITION PAINT





**"THE KEYSTONE RAPTOR IS ABSOLUTELY THE WAY TO GO. ITS OUR HOME AWAY FROM HOME WHEN WE ARE HAVING FUN CAMPING, OR SHOOTING VIDEO FOR OUR TV SERIES."**



**FISHER'S *ATV* WORLD**

**SEE BRIAN FISHER'S RAPTOR TOY HAULER ON DESTINATION AMERICA SUNDAYS AT 9AM (EST)**



**COMING TO NBC SPORTS JULY 2015**

**NORCOLD POLARMAX18**

The **LARGEST** made-for-RV refrigerator **EVER!**

- Built for the rigors of the road
- AC or LP power options means flexibility to go off the grid

Home-Sized **18** cu.ft.

**INDUSTRY FIRST**



**NO EXTRA POWER EQUIPMENT NEEDED. SWITCHES TO PROPANE IF ELECTRICITY IS UNAVAILABLE.**



# RAPTOR

## FIFTH WHEEL TOY HAULERS

**RAPTOR'S BATHROOM STORAGE AND FUNCTIONALITY  
IS UNMATCHED IN THE TOY HAULER SEGMENT**



**415TS HIS AND HER BATHROOM FEATURES A DOUBLE VANITY  
AND LARGE SHOWER WHILE BOASTING AMPLE STORAGE SPACE.**







**FROM THE MOUNTAINS TO THE RACE TRACK AND EVERYWHERE IN BETWEEN. WHETHER IT BE FAMILY OR FRIENDS, THE 405TS PROVIDES PLENTY OF ROOM FOR EVERYONE, INCLUDING THE INDUSTRY'S FIRST ALL ENCLOSED 2ND FULL BATH.**

## **405TS INTERIOR**



**ENJOY THE SPACIOUS DESIGN OF THE 405TS FIFTH WHEEL SHOWN IN MERLOT DECOR**

**FEATURES A 2ND FULL BATH AND TWIN LOFT FOR ADDED SPACE AND COMFORT**

**[WWW.KEYSTONERY.COM](http://WWW.KEYSTONERY.COM) / RAPTOR**



# RAPTOR

## FIFTH WHEEL TOY HAULERS

### 425TS MASTER CHEF KITCHEN



FEATURES AN ABUNDANT AMOUNT OF STORAGE AND COUNTERTOP SPACE







**PLENTY OF SEATING IN THE 425TS FIFTH WHEEL SHOWN IN TWILIGHT DECOR**



**SAMSUNG 48" TV (SWINGS OUT/SWIVELS), SOUND BAR WITH BLUETOOTH, BLU-RAY PLAYER AND STAND ALONE 12V SOUND SYSTEM FOR GARAGE AND EXTERIOR USE**

## **425TS INTERIOR**



**425TS KING BED SUITE WITH AWESOME CABINETS, LOTS OF STORAGE AND GREAT WALK-AROUND SPACE**

**[WWW.KEYSTONERY.COM](http://WWW.KEYSTONERY.COM) / RAPTOR**



AVAILABLE IN 332, 365, 384 AND 424



LED LIGHTS GIVE YOU A SOFT GLOW FOR NIGHT TIME NAVIGATION

## KING BED SUITE WITH WARDROBE SLIDE



AVAILABLE IN 332, 365, 384 AND 424

WARDROBE SLIDE WITH PLENTY OF STORAGE SPACE AND 32" TV WITH SATELLITE PREP

NOW FEATURED ON ALL FLOORPLANS!

# RAPTOR

## KING BED SUITES







**AVAILABLE IN 332, 365, 384 AND 424**



**FEATURES A BUILT-IN ENTERTAINMENT CENTER AND RESIDENTIAL STYLE DRESSER**

## ***KING BED SUITE WITH BED SLIDE***

**AVAILABLE IN 300, 375, 405, 412, 415 AND 425**



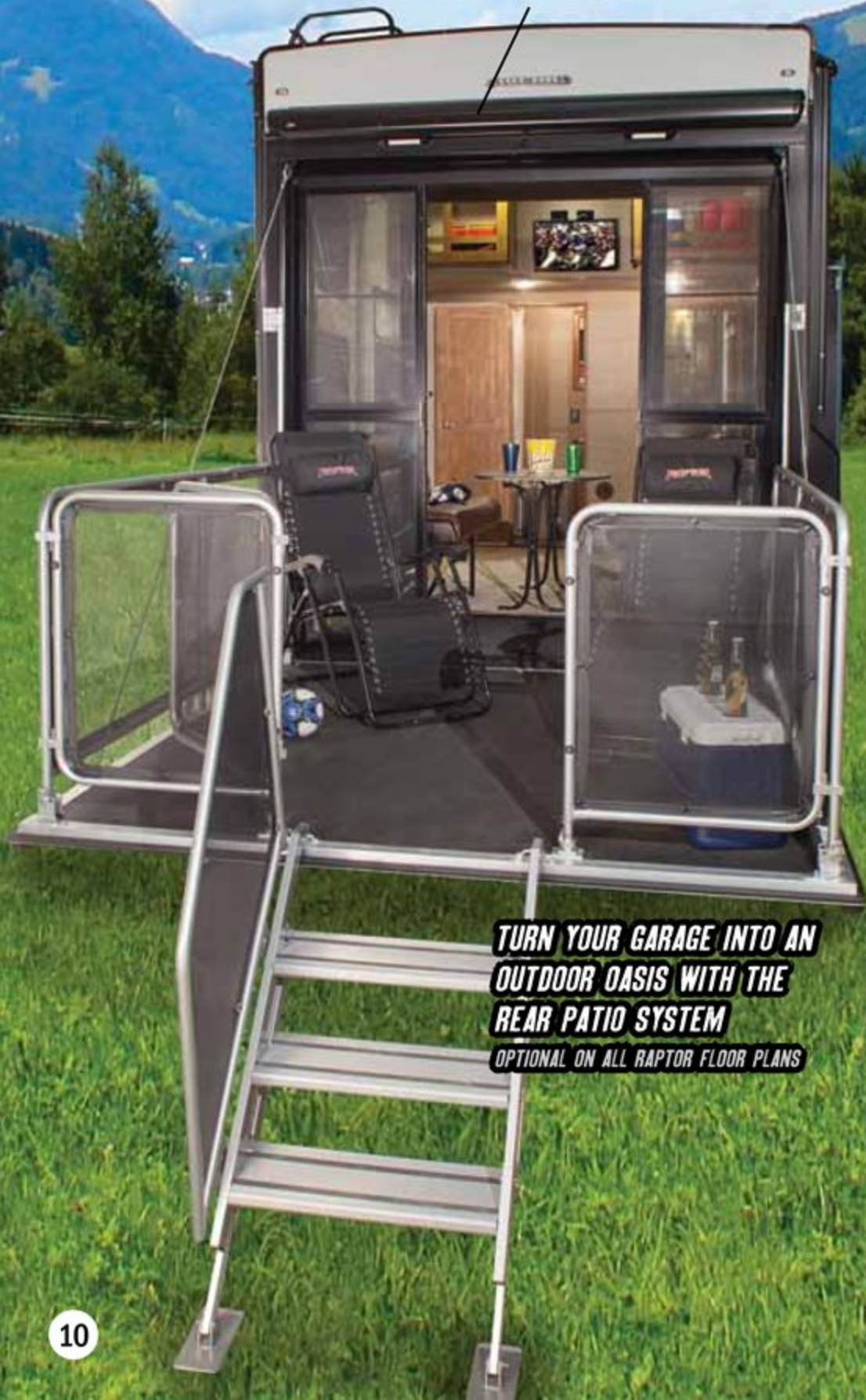
**WASHER/DRYER  
PREP IN FRONT  
CLOSET**

**RAPTOR'S BED SLIDE FEATURES AMPLE WALK-AROUND SPACE**

**[WWW.KEYSTONERY.COM](http://WWW.KEYSTONERY.COM) / RAPTOR**



**REAR ELECTRIC AWNING  
WITH LED LIGHTING**



**TURN YOUR GARAGE INTO AN  
OUTDOOR OASIS WITH THE  
REAR PATIO SYSTEM  
OPTIONAL ON ALL RAPTOR FLOOR PLANS**

## **WIRELESS CAMERA**

**WITH BUILT IN  
NAVIGATION**



**\*AVAILABLE OPTION  
ON ALL RAPTOR  
FIFTH WHEELS**

**GARMIN**

- **WIRELESS REAR BACK UP/SECURITY CAMERA**
- **LARGE 7" COLOR DISPLAY TOUCH SCREEN**
- **HANDS-FREE BLUETOOTH® TECHNOLOGY & VOICE-ACTIVATED**
- **DEDICATED RV NAVIGATION**

## **EXTERIOR FEATURES**



**LED LIGHTS IN FRONT CAP  
AND OVER HITCH**



**LED AWNING LIGHTS**





**8 FOOT RAMP DOOR  
MAKES IT EASY TO LOAD  
AND UNLOAD YOUR TOYS**



**FRAME INTEGRATED/WELDED  
WORRY-FREE D-RINGS KEEP YOUR  
TOYS FROM SLIDING AROUND IN  
THE GARAGE**



**DOVETAIL STORAGE IN THE GARAGE  
IS A MUST-HAVE FOR TOOLS AND  
SAFETY EQUIPMENT**

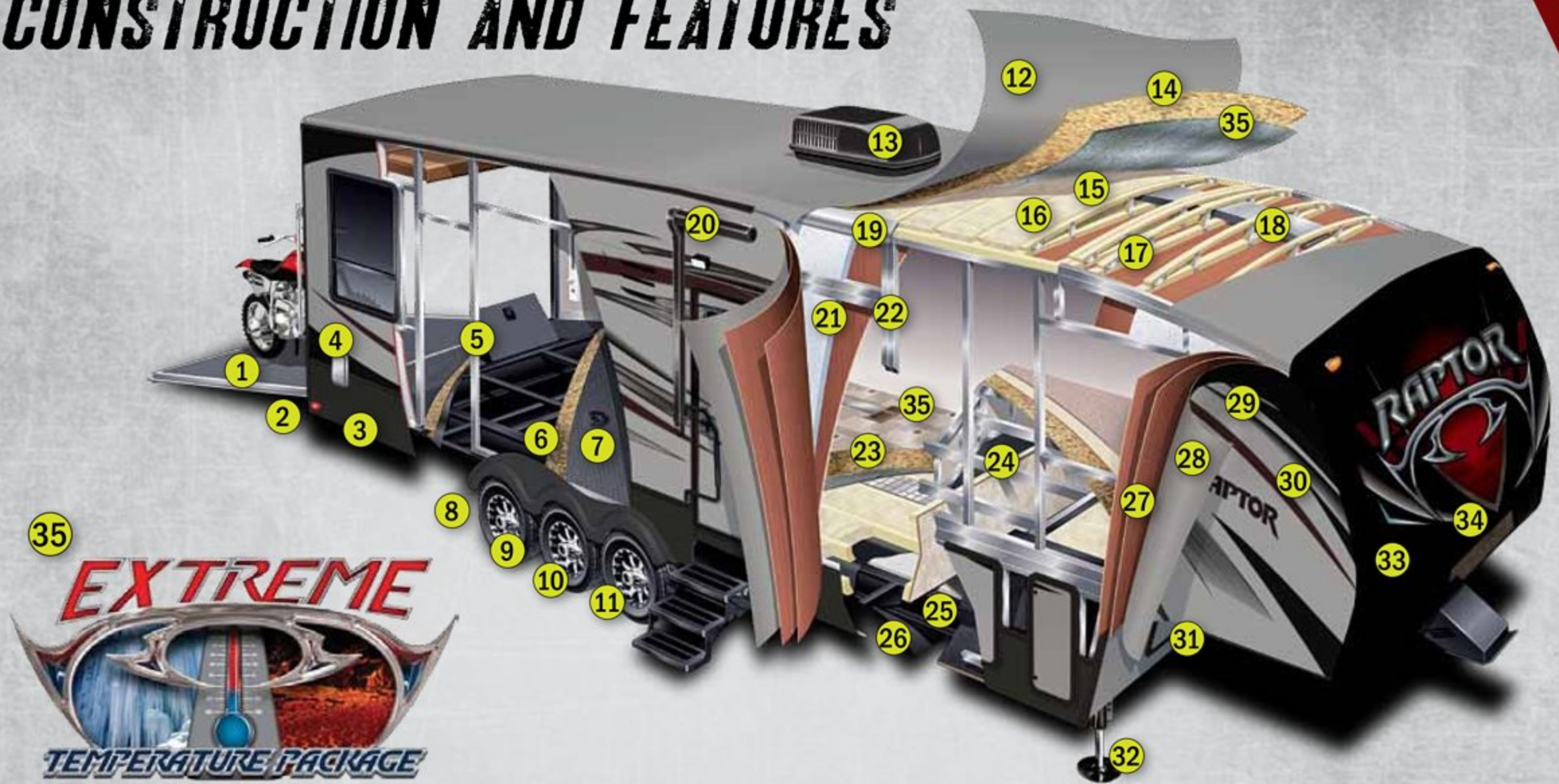
## ***GARAGE FEATURES***



**ELECTRIC BUNK BEDS CREATE THE ULTIMATE BUNK HOUSE  
WITH 500 LB. WEIGHT CAPACITY**



# CONSTRUCTION AND FEATURES







**49**

**CIRCULATES AIR EVENLY**  
THROUGHOUT THE CAMPER

**NO HOT SPOTS**

**NO "DEAD END" DUCT TO TRAP AIR**

**+ 2ND 15K A/C OPTIONAL**

- ① 8' Light weight, rear gate 3,000 lb. capacity w/ spring assist
- ② LED brake lights
- ③ Electric rear stabilizer jacks
- ④ Metal ram air vents
- ⑤ In-floor storage bin
- ⑥ 1" garage floor decking
- ⑦ Frame Integrated d-rings
- ⑧ 16" E-rated radial tires
- ⑨ Aluminum wheels
- ⑩ Electric self adjusting drum brakes (all wheels)
- ⑪ Dexter 7,000 lb. axles
- ⑫ One-piece TPO roof w/ 12 year warranty

- ⑬ 15,000 BTU ducted A/C
- ⑭ 3/8" roof decking
- ⑮ Wired and braced for 2nd ducted A/C
- ⑯ Rolled fiberglass insulation
- ⑰ 5" wood trusses 16" on center
- ⑱ Aluminum wrapped A/C duct
- ⑲ Aluminum radius roof transition molding
- ⑳ Electric patio awning with LED lights
- ㉑ High density solid block foam insulation
- ㉒ 2" welded aluminum wall studs
- ㉓ 5/8" Dyna Span seamless floor decking
- ㉔ 3" welded aluminum floor
- ㉕ 10" or 12" I-Beam chassis
- ㉖ Fluted polypropylene enclosed and insulated underbelly

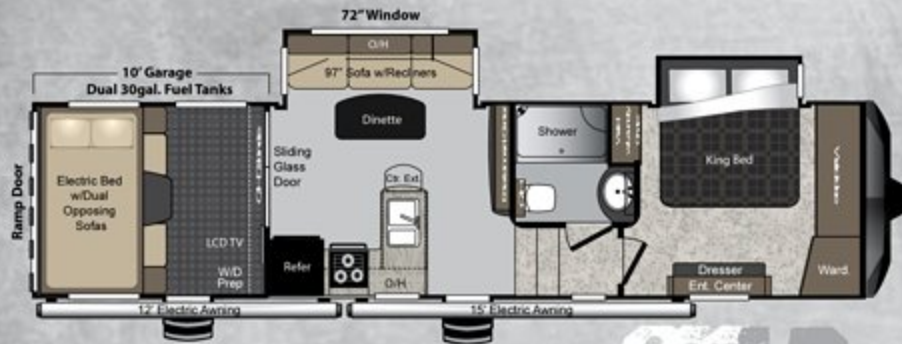
- ㉗ Double layer luan w/ staggered seams
- ㉘ Fully laminated sidewalls
- ㉙ Security LED light
- ㉚ High-gloss exterior
- ㉛ On board generator (optional)
- ㉜ Optional 6-Point Level Up by Lippert
- ㉝ Painted front cap designed for improved turning radius
- ㉞ Hitch vision with LED light
- ㉟ Extreme temperature package with astro-foil. R Values: ceiling = R38, floor = R31, sidewalls = R9.
- ㊱ Drop frame construction
- ㊲ Equa-Flex suspension system
- ㊳ Exterior folding ladder for easy roof access

- ㊴ Toy Lock system — a fifteen foot braided retractable cable allowing for peace of mind while you're away from your prized possessions
- ㊵ Oversized convenience Docking Center — hot /cold shower, black tank flush, winterization by-pass, fresh water fill, cable/satellite connections, and battery quick disconnect
- ㊶ Dual 30 gallon fuel tanks
- ㊷ 131" sofa with recliners (365, 415, 424 only)
- ㊸ Taller main entry door (6' 6")
- ㊹ LED lights in front cap and over hitch
- ㊺ 1" thick slam latch baggage doors w/ magnetic door catch
- ㊻ Single piece crossmember
- ㊼ G-Rated tires (optional)
- ㊽ Easy to reach 4-step main entry
- ㊾ Max Flo zone control 15,000 BTU A/C system

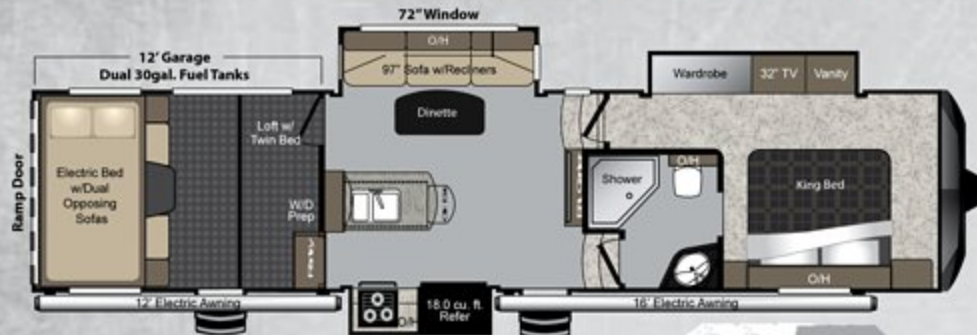




# RAPTOR



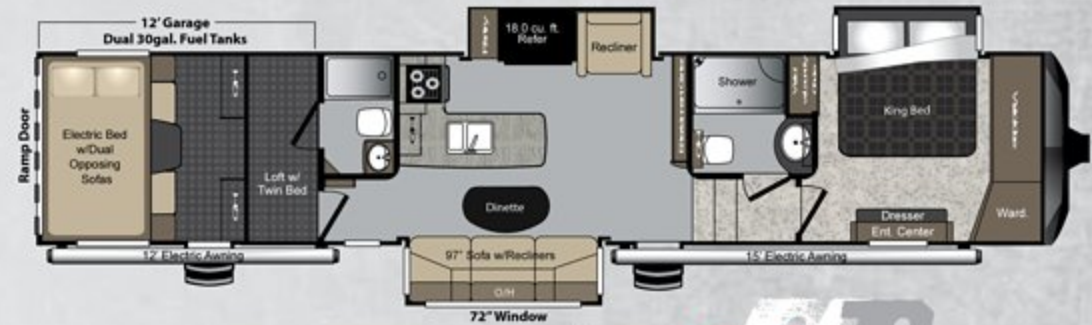
**SHIPPING WEIGHT: 12,938 lbs.**  
**HITCH WEIGHT: 2,970 lbs.**  
**LENGTH: 35' 6"**



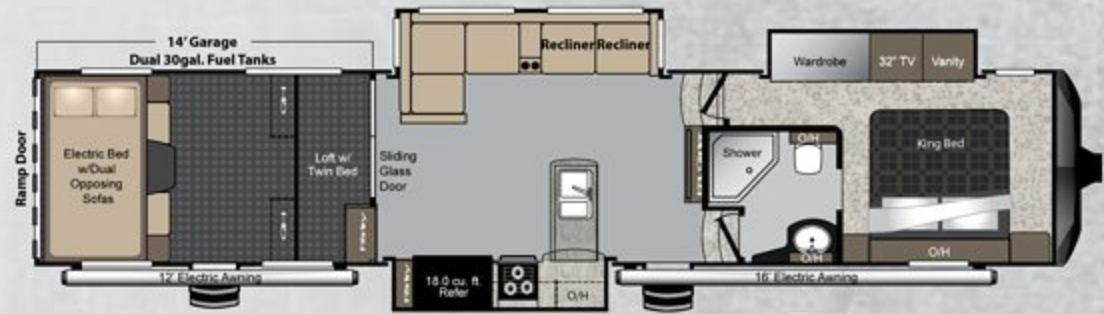
**SHIPPING WEIGHT: 13,308 lbs.**  
**HITCH WEIGHT: 3,192 lbs.**  
**LENGTH: 37' 8"**



**SHIPPING WEIGHT: 14,651 lbs.**  
**HITCH WEIGHT: 4,349 lbs.**  
**LENGTH: 40' 6"**



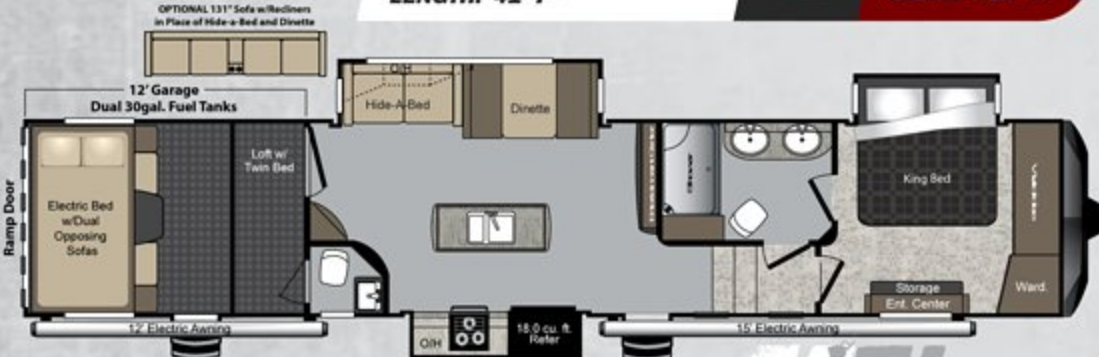
**SHIPPING WEIGHT: 15,376 lbs.**  
**HITCH WEIGHT: 3,785 lbs.**  
**LENGTH: 42' 8"**



**SHIPPING WEIGHT: 15,385 lbs.**  
**HITCH WEIGHT: 3,975 lbs.**  
**LENGTH: 42' 8"**



**SHIPPING WEIGHT: 15,101 lbs.**  
**HITCH WEIGHT: 3,899 lbs.**  
**LENGTH: 41' 7"**

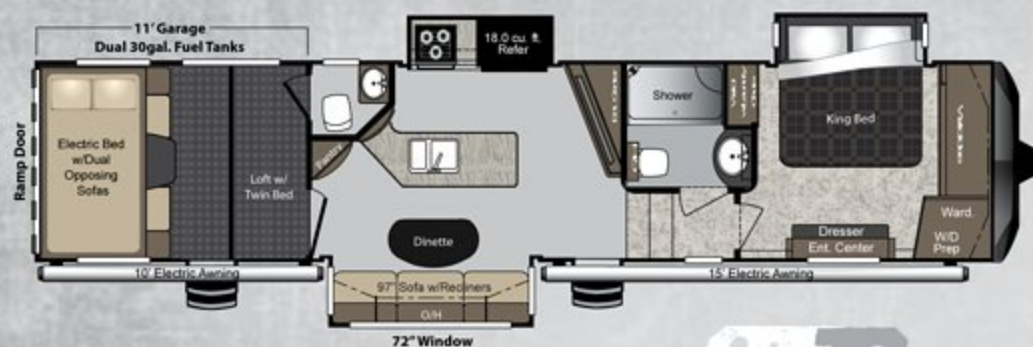


**SHIPPING WEIGHT: 15,160 lbs.**  
**HITCH WEIGHT: 3,995 lbs.**  
**LENGTH: 42' 5"**





# FLOOR PLANS



**SHIPPING WEIGHT: 13,985 lbs.**  
**HITCH WEIGHT: 2,515 lbs.**  
**LENGTH: 38' 11"**



**SHIPPING WEIGHT: 15,225 lbs.**  
**HITCH WEIGHT: 3,920 lbs.**  
**LENGTH: 42' 5"**



**SHIPPING WEIGHT: 15,440 lbs.**  
**HITCH WEIGHT: 3,925 lbs.**  
**LENGTH: 42' 6"**



**PULL-OUT TRAY STORAGE COMPARTMENT (OPTIONAL)**



**ONE TOUCH 6-POINT LEVEL-UP SYSTEM (OPTIONAL)**



**REAR PATIO SCREEN DOOR WITH REMOVABLE CLEAR VINYL WINDOW PANES (OPTIONAL)**



# STANDARD OPTIONS

## THE MOST FULLY EQUIPPED TOYHAULER ON THE MARKET

### INTERIOR

- Polar Max 18 cu. ft. Refrigerator (8 cu. ft. 300MP)
- 12-Gal. Gas/Electric DSI Water Heater
- 30" Stainless Steel Residential Microwave
- Recessed 3 Burner Range w/22-inch Oven
- Corian Range Cover and Sink Cover
- Upgraded Residential Pull-Out Kitchen Faucet
- Corian® Surface Counter Tops
- Large Stainless Steel Kitchen Sink
- Hardwood Cabinetry w/ Maple Raised Panel Doors
- 100# Full Extension Ball Bearing Drawer Guides
- Hardwood Ceiling Treatment with LED Accent Lighting and Pendant Lights
- Wooden Crown Molding
- Night Shades/Poly-Wood Blinds
- Side Aisle Master Bath
- Power Vent In The Master Bathroom
- Porcelain Foot Flush Toilet
- Single Piece Shower (select models)
- Recessed Shower (select models)
- Skylight in Shower
- Wooden Residential Interior Door
- Cable/Sat. Prep in Living Room

- Cable/Sat. Prep in Bedroom
- Cargo Carpet in Bedroom
- TV Antenna w/ Power Booster
- Raptor Control Panel w/ Fuel Gauge
- Wired & Framed for Second A/C in Bedroom
- Automatic Transfer Switch with Generator Prep
- Battery Quick Disconnect
- 50 Amp Service
- 15,000 BTU Ducted Air Conditioner
- 35,000 BTU Furnace
- 132-Gallon Fresh Water Tank (select models)
- Washer Dryer Prep
- Ducted A/C Into Garage
- Ducted Heat Into Garage (Select models)
- Black Splash
- Pull-Down Screen in Garage Area
- 78" Tall Main Entry Door

### EXTERIOR

- Oxford Gray High Gloss Exterior Sidewalls
- Painted Front Cap
- Radius Roof w/ One-Piece TPO Walk-on Roof and a 12 Year Warranty

- Oversized Convenience Center (All System Hook-Ups Located In One Area)
- On Board Fuel Station (30 Gallon Capacity)
- 30 Gallon Generator Fuel Tank
- Exterior Cable / Sat Hook-up
- Rear LED Spotlights
- 3 Large LED Outdoor Activity Lights
- One Touch Electric Awning with LED Lights (2)
- 4 Step Main Entry
- Large Fold-Away Entry Assist Handle (2)
- Outside Shower / Hot and Cold w/ 25' Coil Hose
- Large Tinted Safety Glass Windows w/ 80% Tint
- Huge Drop Frame Pass-Through Storage
- 1" Slam Latch Baggage Doors
- Exterior Folding Ladder
- Rain Gutters with Extended Drip Spouts
- Ram Air Ventilation System In Garage
- Toy Lock
- New Upgraded Graphics Package with 5 Year Warranty
- Fiberglass Front Cap w/ Max Turn Technology

- Black Tank Flush
- Spare Tire
- Exterior 12 volt Outlet
- Hydraulic Front Jacks and Power Rear Jacks
- Trail Air Equaflex Suspension
- Dexter 7,000 lbs. Ultra Lube Axles
- 12" x 2" Self Adjusting Electric Brakes
- Premium 8 Lug 16-inch Aluminum Wheels
- E-Rated Radial Tires
- Heated And Enclosed Underbelly
- Double Welded Aluminum Construction
- Hydraulic Slide Rooms (select models)
- 5" Pre-Engineered Roof Truss Rafters

### INDUSTRY EXCLUSIVE ENTERTAINMENT SYSTEM

- Samsung 48" 1080P LED HDTV
- Samsung® Sound Bar with Bluetooth and Powered Subwoofer
- Samsung® Blu-Ray Player
- Sony® Exterior Marine Speakers(2)
- Sony® Garage Speakers(2)
- Sony® AM/FM/CD/MP3 Player
- Sony® Bedroom Speakers (2) with Shut Off Switch

### OPTIONS

- MaxFlo 15,000 BTU Zone Controlled 2nd Air Conditioner
- Euro Style Chair
- Cummins/Onan 5,500 Watt Gas Generator
- Frameless Dual Pane Windows
- Rear Patio Screen Door
- Electric Beds with Dual Opposing Sofas
- Rear Ramp Patio with Electric Awning and Steps
- 131" Sofa with Recliners (365, 415, 424 only)
- High Definition Paint - Red, Blue, Orange or White
- 6 Point Hydraulic Auto Leveling
- G-Rated Tires
- Garmin Backup Camera with Navigation
- Dinette Seat with Slider Top (412, 425 only)
- Slide Out Storage Tray

### SAFETY PACKAGE

- Carbon Monoxide Detector
- Smoke Detector
- LP Gas Detector
- Fire Extinguisher

## SPECIFICATIONS & DECOR OPTIONS

FIFTH WHEELS	300MP	332TS	365LEV	375TS	384PK	405TS	412TS	415TS	424TS	425TS
SHIPPING WEIGHT	12938	13308	14651	13985	15101	15376	15225	15160	15385	15440
CARRYING CAPACITY	3562	3192	4349	2515	3899	3624	2775	3840	3615	3560
HITCH WEIGHT	2970	3330	3860	3460	3755	3785	3920	3995	3975	3925
EXTERIOR LENGTH	35' 6"	37' 8"	40' 6"	38' 11"	41' 7"	42' 8"	42' 5"	42' 5"	42' 8"	42' 6"
EXT. HEIGHT - A/C TOP	13' 2"	13' 2"	13' 6"	13' 2"	13' 6"	13' 6"	13' 6"	13' 6"	13' 6"	13' 6"
FRESH WATER (GAL.)	132	132	132	132	132	132	132	132	132	132
WASTE WATER (GAL.)	39	39	78	39	39	78	64	69	39	78
GRAY WATER (GAL.)	78	78	78	76	76	78	71	76	69	78
LPG	60	60	60	60	60	60	60	60	60	60
AWNING	15' & 12'	12' & 15'	20' & 12'	15' & 10'	15' & 12'	12' & 15'	12' & 15'	12' & 16'	12' & 15'	12' & 15'

\* Weights reflect a fully equipped coach. See disclaimer below.



YOUR LOCAL RAPTOR DEALER:

FEBRUARY 2015



**Keystone RV Company**

**WWW.KEYSTONERV.COM | 574-535-2100**



DISCLAIMER: Product information is as accurate as possible as of the date of publication of this brochure. All features, floor plans, and specifications in this brochure are subject to change without notice. Please also consult Keystone's web site at [www.keystonerv.com](http://www.keystonerv.com) for more current product information and specifications. Tow Vehicle Disclaimer. CAUTION: Owners of Keystone recreational vehicles are solely responsible for the selection and proper use of tow vehicles. All customers should consult with a motor vehicle manufacturer or their dealer concerning the purchase and use of suitable tow vehicles for Keystone products. Keystone disclaims any liability or damages suffered as a result of the selection, operation, use or misuse of a tow vehicle. KEYSTONE'S LIMITED WARRANTY DOES NOT COVER DAMAGE TO THE RECREATIONAL VEHICLE OR THE TOW VEHICLE AS A RESULT OF THE SELECTION, OPERATION, USE OR MISUSE OF THE TOW VEHICLE.