

Retreat

DESTINATION TRAILER FLOORPLANS



39BHHS



39FKSS



39BHQS



39MKTS



39FDEN

SPECS

Fifth Wheel	39BHHS	39BHQS	39FDEN	39FKSS	39MKTS
Shipping Weight	11993	11274	10472	10787	11434
Carrying Capacity	1007	2026	2503	2188	1566
Hitch Weight	1255	1550	975	955	1965
Exterior Length*	40' 11"	40' 8"	40' 8"	40' 11"	40' 8"
Ext Height	12' 7"	12' 7"	12' 7"	12' 7"	12' 7"
Fresh Water	55	55	55	55	55
Waste Water	38	76	38	38	38
Grey Water	64	64	64	64	70
LPG Capacity	60	60	60	60	60

DISCLAIMER: Product information is as accurate as possible as of the date of publication of this brochure. All features, floor plans, and specifications in this brochure are subject to change without notice. Please also consult Keystone's web site at www.keystonev.com for more current product information and specifications. Tow Vehicle Disclaimer. CAUTION: Owners of Keystone recreational vehicles are solely responsible for the selection and proper use of tow vehicles. All customers should consult with a motor vehicle manufacturer or their dealer concerning the purchase and use of suitable tow vehicles for Keystone products. Keystone disclaims any liability or damages suffered as a result of the selection, operation, use or misuse of a tow vehicle. KEYSTONE'S LIMITED WARRANTY DOES NOT COVER DAMAGE TO THE RECREATIONAL VEHICLE OR THE TOW VEHICLE AS A RESULT OF THE SELECTION, OPERATION, USE OR MISUSE OF THE TOW VEHICLE. *Length is defined as the distance from the centerline of hitch pin/coupler to rear bumper of trailer. 01/14

LIVING ROOM HIGHLIGHTS

- 8' Ceiling height
- Solid wood slide room fascia
- 19' Slide room with cathedral ceiling on FDEN & FKSS
- 39" Main slide room depth
- Decorative plantation blinds in living area
- Tri-fold sleeper sofa
- Fireplace

ENTERTAINMENT CENTER

- 32" Flat panel TV
- I-Pod hook-up
- DVD player
- AM/FM/CD/Stereo system with MP3 Jack
- True sound speaker system
- Recliner (Applicable Models)
- Residential end tables
- Free standing dinette with four chairs
- Residential recessed ceiling lighting
- Ceiling fan with light (Most Floorplans)
- Wall sconce in slide room
- Etched glass overheads
- Cabinets in the slide room
- Dinette chandelier

KITCHEN HIGHLIGHTS

- Extra large double bowl kitchen sink
- High rise faucet with pull out sprayer
- Residential "eat in" bar (FKSS, FDEN)
- Two bar stools (FKSS, FDEN)
- Waste basket storage
- Solid wood raised panel residential cabinets with crown molding

- Pre-drilled and screwed hardwood cabinet framing
- Residential ball bearing drawer guides
- Microwave with carousel
- Three burner range with oven
- 18 Cu. Ft. residential black refrigerator
- Double door pantry
- Residential water purification system
- Upgrade central vacuum system

BATH

- Porcelain Toilet with foot flush
- Neo-angle glass shower with surround
- Fantastic fan w/convenient wall mount control
- Large medicine cabinet
- Louvered door on large closet
- Washer and dryer prep (N/A 39BHQS, 39BHQ5)
- Dressing mirror

BEDROOM

- 7' Tall bed slide
- Pillow top king mattress (N/A 39BHQS)
- Oversized bed slide w/overhead cabinets, accented w/decorative cabinet doors & functional reading lights
- Mega storage under master beds
- Dual night reading sconces
- Etched glass cabinet doors in the bed slide
- Two door wardrobe
- Fully extended deep dresser drawers
- Pleated shades
- Large panoramic window
- Residential ceiling fan
- Recessed decorative lighting
- Six panel interior bedroom doors

EXTERIOR

- Residential exterior soffit lights
- Dual 30 Lbs LP bottles with automatic change over and cover
- Large swing away grab handle
- 2 Exterior speakers
- Residential patio door with screen door
- Exterior shower
- 50 Amp detachable power cord
- Cable TV hook-up
- Satellite hook-up
- 110 volt exterior outlets

MECHANICS

- 16 gallon gas/electric DSI water heater
- 42,000 BTU furnace
- 15,000 BTU ducted air conditioner
- Prepped for a second air conditioner
- 50 Amp electrical service with detachable cord
- Water purification system
- 75 Amp converter
- 110 Volt outlets in the slides
- 12 Volt SHURflo® Water Pump

CONSTRUCTION

- 12" Powder coated I-beam frame
- Darco wrapped main floor vapor moisture barrier
- 5/8" Seamless dyna span subfloor with limited lifetime warranty
- 2" Wall studs constructed 16" on center
- Laminated veneer lumber slideout reinforcements
- Reinforced slide room openings
- 4 1/2" Crowned roof

- Radius corner blocks around windows and compartment doors
- Metal floor registers
- Super frame reinforced frame

SAFETY

- Safety chains
- Break away switch
- Electric brakes on all wheels
- Carbon monoxide detector
- LP detector
- Smoke detector
- GFI electrical outlets
- Tinted safety glass windows

UNIQUE RETREAT FEATURES

- Large bay windows with decorative exterior front
- 8' Tall ceilings
- 102" wide body construction
- Detachable hitch
- Vaulted 19' slide out rooms (39FDEN & 39FKSS)
- Residential high end furniture
- King bed standard (Except 39BHQS)
- "Eat in Bar" in every kitchen (N/A FKSS & FDEN)
- Central vacuum
- Black tank flush

RETREAT OPTIONS

- 21' Electric patio awning
- Stabilizer jacks
- 2nd 13.5K BTU A/C
- Spare tire

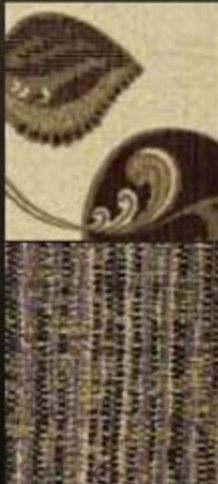
Standard features and options are subject to change without notice.

DECOR OPTIONS

MAPLECREST



SILVER BIRCH



WEDGEWOOD



Retreat

America's Your Back Yard.



**Keystone RV
Company**

574.535.2100 | 2642 HACKBERRY DRIVE | WWW.KEYSTONERV.COM
P.O. BOX 2000 | GOSHEN, IN 46527

CONNECT WITH KEYSTONE RV COMPANY |    



Go RVing.



WWW.KEYSTONERV.COM/RETREAT

Your Local Dealer is:

JAN. 2014