

# VISION<sup>®</sup>



Ultra Lightweight Travel Trailers



**V20RBS**  
Zorro Décor  
with Woodbridge Maple

The Vision ultra-lightweight travel trailer is designed to be pulled by today's smaller, more fuel efficient, tow vehicles. When towing the Vision, the tandem axles add stability to the trailer by reducing the sway.



**V20RBS** Bedroom has a queen bed with reversible quilted comforter.

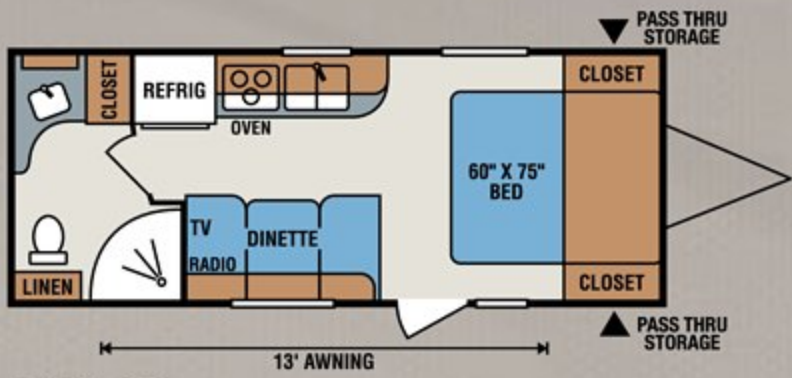


The deep double bowl sink makes it easy to prep food and clean dishes. Sink covers provide additional counter space.

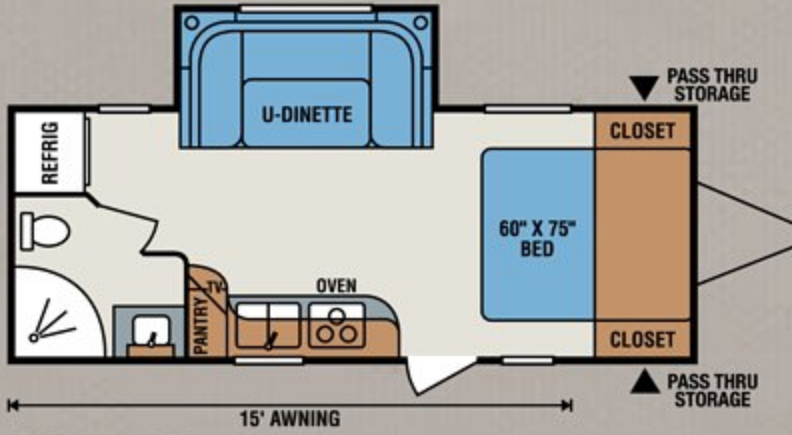


Double door residential glass shower with multi-shelf surround.

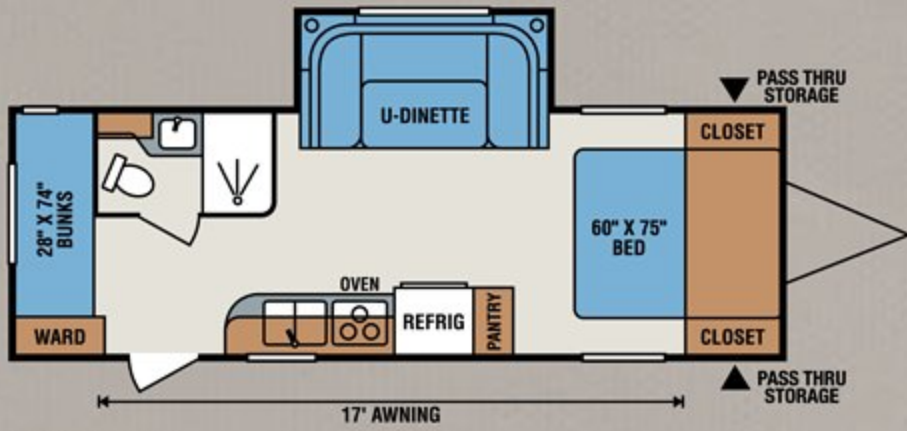
**V20RBS**



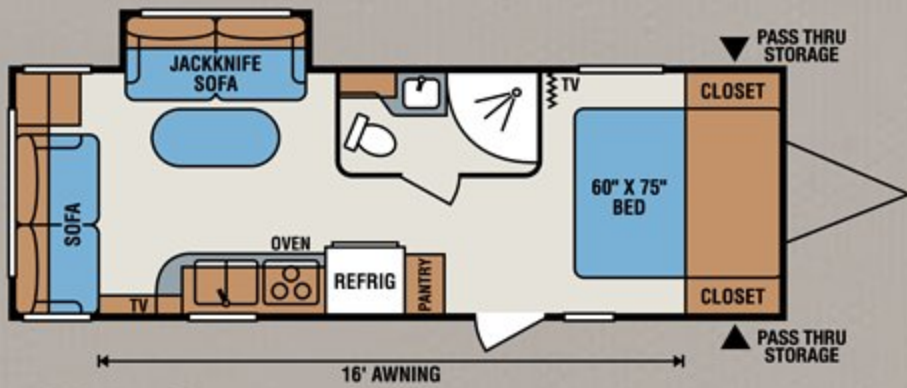
**V19RB**



**V20RBS**



**V23BHS**



**V23RLS**

Travel Trailers	V19RB	V20RBS	V23BHS	V23RLS
UVW (Unloaded Vehicle Weight)*	3,650	4,010	4,140	4,130
Dry Hitch Weight*	350	350	510	490
Dry Axle Weight*	3,300	3,660	3,630	3,640
NCC (Net Carrying Capacity)	1,550	1,190	1,060	1,070
GVWR	5,200	5,200	5,200	5,200
Interior Height	78"	78"	78"	78"
Exterior Height w/ A/C	119"	119"	119"	119"
Exterior Width	90"	90"	90"	90"
Exterior Length	23' 1"	23' 10"	26' 11"	26' 11"
Refrigerator (cu. feet)	6	6	6	6
Water Heater Cap. (gal. G/E w/DSI)	6	6	6	6
Fresh Water Cap. (gal.)	40	40	40	40
Waste Water Cap. (gal.)	30	24	24	31
Gray Water Cap. (gal.)	31	31	31	31
LP Gas Cap. (lbs.)	40	40	40	40
Furnace BTUs (1,000s)	20	20	20	20
Tire Size	13"	13"	13"	13"
Awning	13'	15'	17'	16'

\*This weight reflects the rolling average unit weight for each model. Your trailer weight will vary according to optional equipment.



The sky light provides abundant natural light to the interior of the Vision.



Adjustable power multidirectional LED lighted awning.



The Vision features two exterior speakers, porch light and tinted safety glass windows.



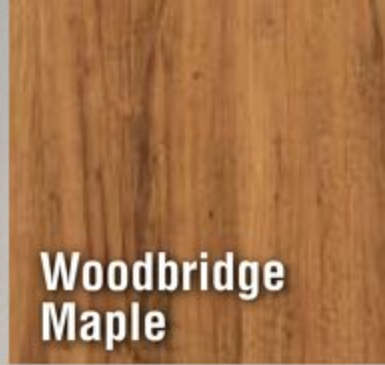
Conveniently located satellite, cable hookups and outside shower with cold and hot water.



**V23RLS**  
Zorro Décor  
with Woodbridge Maple



Zorro Décor



Woodbridge Maple



**V23RLS**

The galley kitchen features double bowl sink, high rise faucet, 6 cubic foot refrigerator, microwave, hood vent with light and 3-burner stovetop with oven.



Designer headboard with quilted reversible comforter.

**V23RLS** Zorro Décor

### Standards

- 13,500 BTU A/C
- 2 – 20# Gas Bottles with Bottle Cover
- 2 Exterior Speakers
- 3 Burner Range with Oven
- 4 Stabilizer Jacks
- 6 Cubic Foot Double Door Refrigerator
- 6 Gallon Gas/Electric DSI Water Heater
- Bumper with Sewer Hose Storage
- Diamond Plate Rock Guard on Front
- Double Step
- Exterior Shower
- Fenders
- Foot Flush Toilet
- Fully Walk On Roof
- Hard Valances
- Innerspring Mattress with Reversible Down Comforter and Headboard
- Jensen® DVD/CD/Stereo/MP3 with Bluetooth
- LED Lights Inside and Out
- Lighted Power Awning
- Microwave
- Monitor Panel
- Night Shades
- Radius Overhead Cabinets and Dinette Bases
- Roller Ball Bearing Drawer Glides
- Porch Light by Entry Door
- Power Vent in Bathroom
- Satellite and Cable Hook Up
- Skylight in Kitchen and Bathroom
- Solid Wood Mortise and Tenon Cabinet Doors
- Tinted Safety Glass Windows
- Titanium Gray Color Infused Gel Fiberglass Sidewalls
- Woodbridge Maple Cabinetry

### Options

- Aluminum Wheels
- Black Tank Flush
- Cotton Cloud Mattress Upgrade
- LED TV with Swing Arm
- Outside Grill
- Power Tongue Jack
- Spare Tire/Carrier/Cover



Dealer Satisfaction Index: Ratings of manufacturers, by dealers, have consistently awarded KZ top honors for excellence of design, reliability, overall quality and value, communications and dealer support.



Dealer:

**ASK ABOUT OUR 2-YEAR LIMITED WARRANTY!**



Join our Family Forum at [www.kzfamilyforum.com](http://www.kzfamilyforum.com)

For more product details and in-depth information, visit us at [www.kz-rv.com](http://www.kz-rv.com)



985 N 900 W • Shipshewana, IN 46565  
E-mail [kz@kz-rv.com](mailto:kz@kz-rv.com) • [www.kz-rv.com](http://www.kz-rv.com)



Due to continual research and advances, manufacturer reserves the right to change specifications, design, price and equipment without notice, and assumes no responsibility for any error in this literature. Some items shown are not included as standard or optional equipment. ©2014KZ | 9/26/14 | 30M