

# Eagle Cap Premium Truck Campers

*Eagle Cap*  
2016  
Truck Campers

**850**  
**960**  
**995**  
**1160**  
**1165**  
**1200**

*Dare to Compare*  
*Matching a Camper to a Truck*  
*Standard Features*  
*Special Features & Options*  
*Weights & Measures*  
*Interior Decors*



TruckCamperMAGAZINE.com  
**2014 Readers' CHOICE AWARDS**  
✓ Best Truck Camper Innovation of the Year  
Eagle Cap Modular Furniture System:  
Dinette/Sofa/Theater Seating

Eagle Cap 1200 12' Triple-Slide



# Dare to Compare Page

## 20 Exclusive Features Not Available on Other Brands

- 3-Year Structural Warranty
- EC Max - 4-Season Insulated
- One Piece Fiberglass Front Cap
- TCC Construction (True Composite Construction)
- 3M Extreme® Sealed Seams
- All Season Quad ext seals
- Camper Guides
- Frameless Ext Windows - Thermal Pane
- 26" Entry Doors - Wider Easier Access
- Comfort Step Bumper - Optional
- Modular Dinette Furniture
- Theater Seating Recliners - Optional
- Free Standing Table & Chairs (1200)
- 32" TV (Optional 1160, 1165, 1200)
- 72"x84" Cal King Bed (960, 1200)
- Grani-Coat One Piece Countertops with molded double bowl sinks
- Smart Tile Back Splash
- Grabber Catches on all Int Doors & Drawers
- Slam Latches on all Ext Compartment Doors
- 30,000 BTU Furnace
- Interior Mood Light - LED

## 23 Standard Features Optional or Not Available on Other Brands

- One Piece Fiberglass Front Cap
- Lamilux 4000 Ext Fiberglass
- AM/FM/CD/DVD/Bluetooth Stereo w/ext Speakers
- Counter Top Extension (select models)
- Heki Bedroom Skylight
- Concealed TV Antenna - Int Mount
- Microwave
- Micro-Convection (1200)
- Fantastic Fan
- Awning Slide Toppers
- 12V / USB Charging Center
- Thermal Pane Windows - Gas Filled
- Taller Bath Skylights
- 4-Season Insulation - "EC-Max"
- 1" Insulated Ext baggage doors
- Water Heater By-pass Valve
- Winterization Valve
- LED Interior & Exterior Lights
- Digital Thermostat-(Runs A/C & Heat)
- Dream Dinette - no annoying table leg
- Sofa / Bed - (std 1160/1165/1200)
- Sealed Burner Stovetop
- Black Tank Flush System
- Phat Ladder®

## Available Options

- 19" & 24" LCD 12V TV (select models)
- 32" LCD 12V TV (1160, 1165, 1200)
- Low Profile A/C w/Digital Wall T-Stat
- Generator Ready / Req w/Gen Opt
- Generator-2500W Cummins/Onan LPG
- Jack Brackets-Swing Out (Req for Dually)
- 12v Power Patio Awning w/LED- (1160,1165, 1200)
- Electric Rear Awning (n/a 1160,1165,1200)
- Roof Rack System-(Maggie w/Cross Bars)
- Solar Panel - 100 Watt w/Regulator
- Theater seating Recliners (Replaces sofa 1160, 1165, 1200)
- U Shaped Dinette (n/a 1200)
- Water Filter w/separate faucet
- Wireless Backup Camera - HD Color

## 3 - Year Structural Warranty

Eagle Cap Campers provide a 3-year structural warranty. Appliance warranties vary and are set by their respective manufacturer.



## BEST INSULATED

### PERIOD!

**Ceiling - R-19**

**Walls - R-13**

**Floor - R-22**

**30,000 BTU Furnace**

**Ducted Basement heat**

**Gas Filled Thermal Pane Windows**

**Insulated Baggage Doors**

#### Notice

Eagle Cap's policy is one of continual improvement and reserves the right to make changes to all features and/or options at our discretion without prior notice and without incurring any obligation. Note: Photos may not be of the current model year or interior color. Please confirm all options and details with your dealer and/or an Eagle Cap representative before ordering or making a final buying decision.

# Dare to Compare Page

## EAGLE CAP CONSTRUCTION

### 1. GEL-COAT AERODYNAMIC TWO-TONE FIBERGLASS FRONT CAP!

*No other camper is built with these structural components – tougher, stronger, better sealed!* This cap is designed to fit perfectly to the contour of our camper providing a tight, perfect fit. You will also note the beautiful two-tone gel-coat finish, adding that high end luxury look, you will not see on any other truck camper!

### 2. AIRCRAFT QUALITY WELDED ALUMINUM FRAME SUPERSTRUCTURE!

Best aluminum framing techniques - utilizing 2x2 and 2x4 Aircraft Quality Aluminum framing plus ALP's exclusive

TCC® bonding process creates a second to none structure and also provides you with our exclusive ALP 3-year structural warranty!

### 3. ALL SEASON EXTERIOR QUAD SEALING PROCESS!

*Four different levels of exterior seals providing the best sealed camper in the industry!*

1. All seams/joints sealed with construction adhesive/sealant.
2. One-piece fiberglass cap and seams are sealed with 3M Extreme Seal®, the best sealing tape in the industry!
3. Exterior finish trim is sealed with butyl seal, no putty tape that dries out like other brands!
4. Finish Trim is then silicone sealed.

Four Seals instead of one like other brands... you decide! **Eagle Cap "Built Like none Other"...**

### 4. EC MAX – MAXIMUM 4-SEASON INSULATION!

Highest R-Values – We use only Closed Cell Block Foam Insulation, TPO Insulated roof, providing you with R-19 in ceiling / R-22 in the floor / R-13 in the wall. Gas filled thermal pane insulated windows, 1" insulated baggage doors, easy access winterization valves, ducted heat with full basement heat and a 30,000 BTU furnace, all standard, making the Eagle Cap cooler in the summer, warmer in the winter, easier to winterize and providing you the best 4-Season thermal insulated truck camper in the industry!

No One Else Has This Much Insulation... Eagle Cap "Built Like none Other"... you decide!

### 5. LAMILUX 4000 GEL-COAT FIBERGLASS EXTERIOR WALLS!

Lamilux 4000 fiberglass is not only a high gloss beautiful finish but is also a thicker fiberglass providing you with a stronger wall structure than other campers!

### 6. FRAMELESS – GAS-FILLED THERMAL PANE WINDOWS!

*Eagle Cap is truly built like no other camper and it is only logical that Eagle Cap would have the latest high end luxury "Frameless" windows. Not only are they beautiful but they are actually a true gas-filled thermal pane window meaning they are 4-season insulated and provide you 5 additional R-Values per window over a double pane and 8 more R-Values over a single pane used in other brands!*

*Eagle Cap "Built Like None Other"... you decide!*



## 3 - Year Structural Warranty

Eagle Cap Campers provide a 3-year structural warranty. Appliance warranties vary and are set by the respective manufacturer.

**BUILD YOUR OWN CAMPER ON OUR WEBSITE AT - [AMLRV.com](http://AMLRV.com)**



# Testimonials

## You guys are doing things right...

Your campers really stand out from the crowd with all the innovative features, floor plans, and options. U shaped dinettes, king beds, rear kitchens, etc. have drawn us to your brand as well as the construction and warranty. I wish I had a dually so I could get the 1165 model. A kitchen island in a camper, seriously. You guys are doing things right. Thank you again,

Jason

## The videos are great and these campers look like the best that's on the market.

Jim

## We cant wait to pick up our new 995

"Thanks Greg. We cant wait to pick up our new 995! Moving out of our Lance and looking forward to it."

Rob

## Thanks for all the support and answering my questions

"Congratulations men very nice camper. Can not wait to get mine. Selling like hotcakes. Thanks for all the support and answering my questions." Harley

## The tour helped cement our decision to purchase a 2015 Eagle Cap 1165

"We are writing to thank you for the great factory tour you gave us late on a Friday afternoon October 3. The tour helped cement our decision to purchase a 2015 Eagle Cap 1165. We were impressed with virtually every step of the design and build process. We look forward to using the camper on many adventures."

Sincerely, Bruce & Barb

## You stand out in the world of manufacturers...

In our search for our Pickup camper we are blessed with God's guidance in each step of the way. In your statement regarding the enjoyment of traveling and enjoying the wonder of God's creation we appreciate your "witness" in words.

Your campers stand out in all the searching and comparison shopping we have done. Thanks for your company, you stand out in the world of manufacturers, in all areas

Ken and Peggy

## I was impressed with the info I got off your website!

"I don't normally answer emails like this but I was impressed with the info I got off your website. I am just starting to look at options for a new/newer RV and I thought your website was super useful."



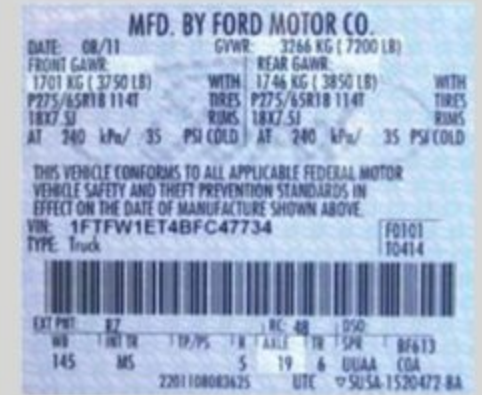
**BUILD YOUR OWN CAMPER ON OUR WEBSITE AT - [AMLRV.com](http://AMLRV.com)**

# Truck Camper Guide

## Matching a Camper to a Truck

When purchasing a Truck Camper, there are a few important factors to consider

1. **The payload capacity** – sometimes this rating is posted in the glove box of your truck, if not, another way to determine payload capacity would be to weigh your truck, full of fuel, people and of course the dog, and then subtract that weight from the (GVWR) posted on the door of your truck (see example to the right) and that difference would equal your payload capacity (weight of camper you can carry). Example, your truck weighs 6800lbs and the GVWR on the door reads 9900lbs your payload would be 3100lbs (9900lbs-6800lbs=3100lbs).



2. **GVWR (Gross Vehicle Weight Rating)** – is the maximum weight the manufacturer rates that truck to carry, including weight of the truck and all people. Cargo, fuel etc.

3. **GAWR (Gross Axle Weight Rating)** – is the maximum rating the manufacturer rates the axles to carry. These ratings are usually posted on the driver's side doorpost. To determine these ratings on your truck with cargo (camper) weigh your truck with just the front and then just the rear axle on the scales. This will give you your axle weights for your truck with your camper, these weight should fall within the manufacturers axle ratings.

4. **Tire capacity (rating of your tire)** – This is the tiny fine print on the sidewall of your tire, see photo to the right, usually just behind the tire inflation number, this will usually be a direct correlation to the axle ratings and GVWR on new trucks. **This will always be your weak link** in your weight carrying capacity and should always be checked before carrying any load, including a passenger car for that matter. **SAFETY ALERT – Always make certain you choose tires with the proper load capacity to handle whatever load you are carrying with your vehicle!**



5. **COG (Center of Gravity)** – also known as Center of Balance, is the point that the weight of your camper is balanced, ALP notes the COG on every camper with a large red arrow, this is determined as it is weighed and balanced as it goes out the door. Your camper COG should fall into the “Load Range” of your truck, see your owners manual for this measurement. As you can see in this example, to the right, the COG of this camper easily falls into the load range of this truck. As the owner, it is your responsibility not to exceed the weight or COG specifications of your truck when purchasing a truck camper. Always think safety first before loading a camper on your truck. Please consult your dealer, who can help you select aftermarket items designed to aid in proper use of your truck and camper combination.



**Suspension Enhancements** – Suspension enhancements allow you to manage your load but does not change or add to a trucks GVWR. In some areas you can make upgrades to your truck and then have it inspected by a DOT (Department of Transportation) and you may be able to increase your “legal” GVWR, check with your local licensing agency for details in your area.

**Torklift Stable Loads** – We use and recommend this product. Today's truck manufacturers market trucks to be our everyday driver, thus they want the empty loaded truck to be as smooth a ride as possible. To accomplish this they lower the overload spring (the heavy weight bearing springs) 3" to 4" lower to give that smoother ride when empty. The problem with this is when you add any weight to the truck it appears to be sitting low in the rear or “overloaded” since the vehicle has to drop 3 to 4" before it touches the overload spring. Stable Loads by Torklift simply fill this space so that as soon as you add the load, the weight immediately sets on the overload springs allowing your trucks suspension to do what it was designed to do, carry a load, a camper in this case.

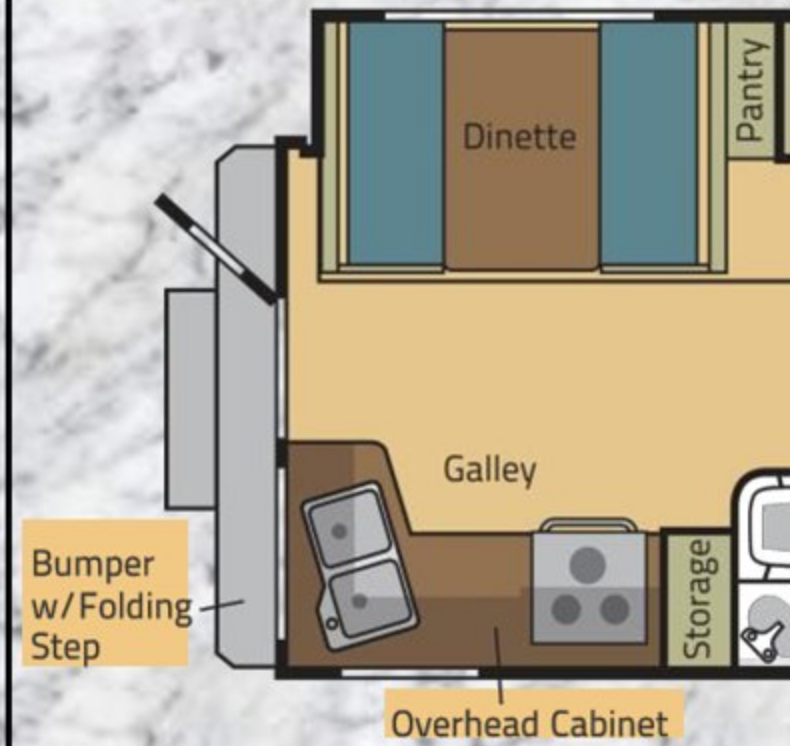


**Air Bags** - We use and recommend air bags also, in the correct application. Some truck manufacturers recommend airbags in all applications and suggest you inflate them 80 to 100 lbs in the bags. **We don't recommend air bags to be used in this way**, because in too many cases, this will raise your camper up off of the suspension causing you to have a spongier unsafe ride! If you choose air bags we only recommend you inflate them so that you are just touching the overload springs of your truck for the best ride and handling characteristics.



# Eagle Cap 850 Wetbath Floorplan

# Eagle Cap 960 King



<i>Sleeping</i>	4	<i>Fresh Water Capacity US Gallons.</i>	49
<i>Floor Length</i>	8' 11"	<i>Grey Water Capacity US Gallons.</i>	26
<i>Exterior Width</i>	96"	<i>Black Water Capacity US Gallons.</i>	22
<i>Overall Length (Nose to rear ladder)</i>	17' 2"	<i>Hot Water Tank Capacity US Gallons.</i>	6
<i>Exterior Height (Floor to top of A/C)</i>	105"	<i>Refrigerator Size</i>	7cu.ft.
<i>Interior Height</i>	78"	<i>Dry Weight (LBS)</i>	3267
<i>Dinette Size</i>	42" x 66"	<i>COG (Center of Gravity)</i>	40"

<i>Sleeping</i>	4
<i>Floor Length</i>	9' 10"
<i>Exterior Width</i>	96"
<i>Overall Length (Nose to rear ladder)</i>	18' 5"
<i>Exterior Height (Floor to top of A/C)</i>	105"
<i>Interior Height</i>	78"
<i>Dinette Size</i>	42" x 66"



850 Galley



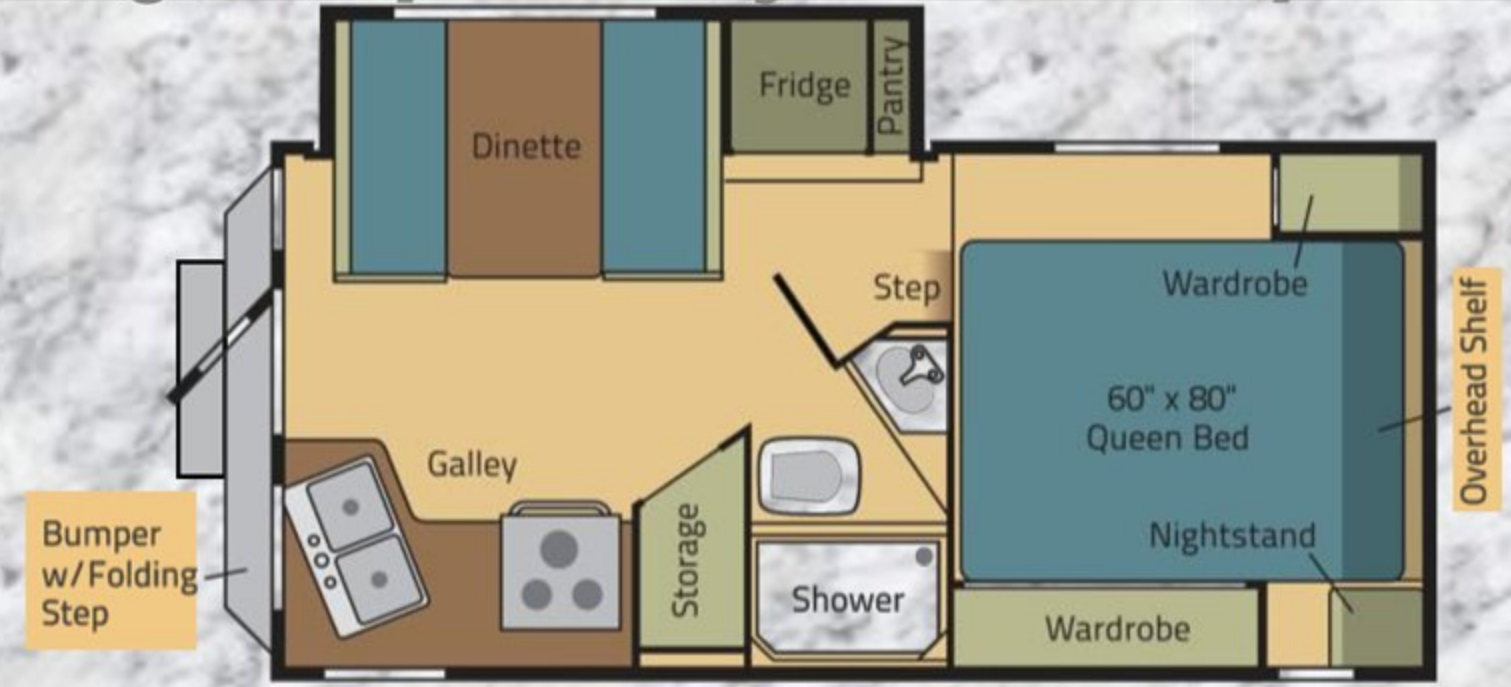
960 Interior Front to

### Notice

Eagle Cap's policy is one of continual improvement and reserves the right to make changes to all features and/or options at our discretion without prior notice and without incurring any obligation. Note: Photos may not be of the current model year or interior color. Please confirm all options and details with your dealer and/or an Eagle Cap representative before ordering or making a final buying decision.

# Bed Floorplan

# Eagle Cap 995 Dry Bath Floorplan



Fresh Water Capacity US Gallons.	44
Grey Water Capacity US Gallons.	31
Black Water Capacity US Gallons.	31
Hot Water Tank Capacity US Gallons.	6
Refrigerator Size	7cu.ft.
Dry Weight (LBS)	3556
COG (Center of Gravity)	50"

Sleeping	4	Fresh Water Capacity US Gallons.	47
Floor Length	10' 2"	Grey Water Capacity US Gallons.	34
Exterior Width	96"	Black Water Capacity US Gallons.	22
Overall Length (Nose to rear ladder)	18' 5"	Hot Water Tank Capacity US Gallons.	6
Exterior Height (Floor to top of A/C)	105"	Refrigerator Size	7cu.ft.
Interior Height	78"	Dry Weight (LBS)	3618
Dinette Size	42" x 66"	COG (Center of Gravity)	49"



to Rear View

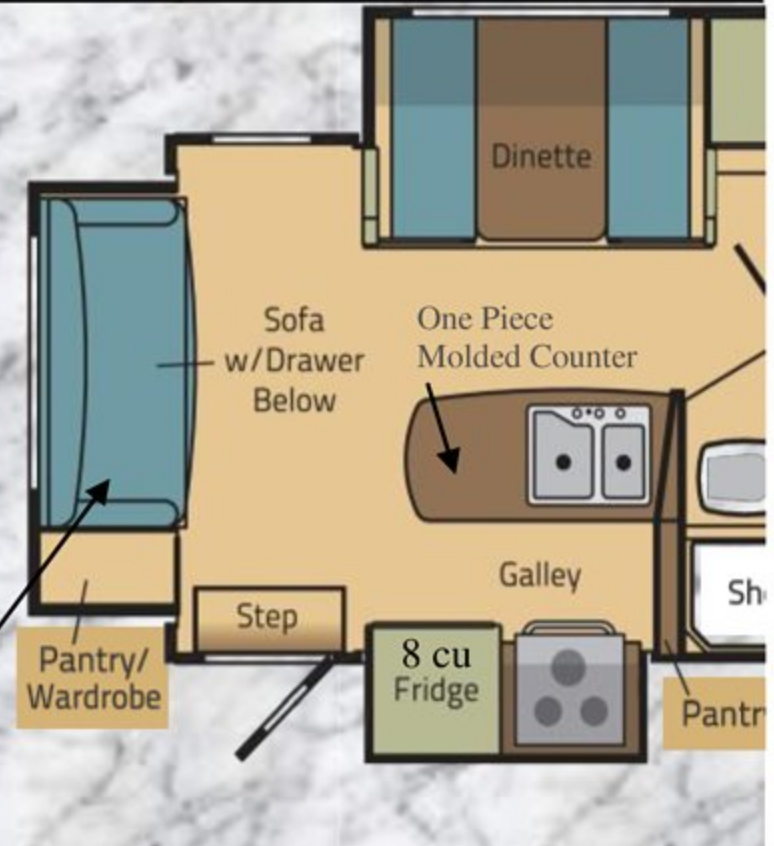


995 Interior Rear to Front View

**BUILD YOUR OWN CAMPER ON OUR WEBSITE AT - [AMLRV.com](http://AMLRV.com)**

# Eagle Cap 1160 Double Slide Floorplan

# Eagle Cap 1165



Sleeping	6	Fresh Water Capacity US Gallons.	66
Floor Length	11' 6"	Grey Water Capacity US Gallons.	41
Exterior Width	102"	Black Water Capacity US Gallons.	41
Overall Length (Nose to rear ladder)	20'10"	Hot Water Tank Capacity US Gallons.	6
Exterior Height (Floor to top of A/C)	112"	Refrigerator Size	8cu.ft.
Interior Height	76"	Dry Weight (LBS)	4555
Dinette Size	42" x 66"	COG (Center of Gravity)	57"

Sleeping	6
Floor Length	11' 6"
Exterior Width	102"
Overall Length (Nose to rear ladder)	20'10"
Exterior Height (Floor to top of A/C)	112"
Interior Height	76"
Dinette Size	42" x 66"



**1160 Interior Rear to Front View >>>**  
with std face to face dinette and Opt 32" TV



**1165 Interior Front to Rear View**  
w/Opt Theater Seating

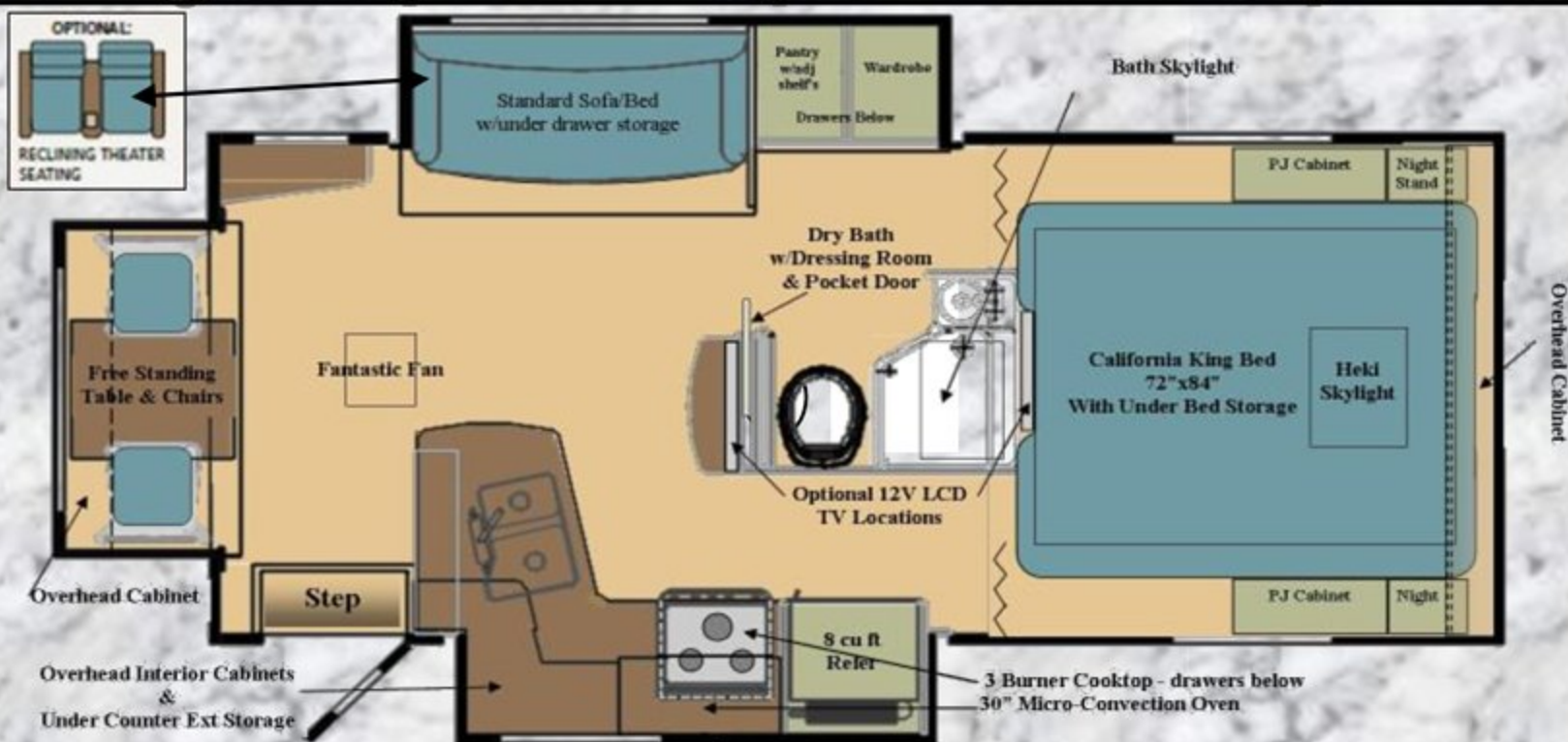
### Notice

Eagle Cap's policy is one of continual improvement and reserves the right to make changes to all features and/or options at our discretion without prior notice and without incurring any obligation. Note: Photos may not be of the current model year or interior color. Please confirm all options and details with your dealer and/or an Eagle Cap representative before ordering or making a final buying decision.



# Triple Slide Floorplan

# Eagle Cap 1200 Triple Slide Floorplan



Fresh Water Capacity US Gallons.	66
Grey Water Capacity US Gallons.	41
Black Water Capacity US Gallons.	41
Hot Water Tank Capacity US Gallons.	6
Refrigerator Size	8cu.ft.
Dry Weight (LBS)	4751
COG (Center of Gravity)	59.5"

Sleeping	4	Fresh Water Capacity US Gallons.	66
Est. Floor Length	12'	Grey Water Capacity US Gallons.	34
Exterior Width	102"	Black Water Capacity US Gallons.	34
Est. Overall Length (Nose to rear ladder)	21'	Hot Water Tank Capacity US Gallons.	6
Exterior Height (Floor to top of A/C)	112"	Refrigerator Size	8cu.ft.
Interior Height	76"	Est. Dry Weight (LBS)	4801
Dinette Size	Free Standing	Est. COG (Center of Gravity)	58"



1200 Rear to Front view

**BUILD YOUR OWN CAMPER ON OUR WEBSITE AT - [AMLRV.com](http://AMLRV.com)**

# Standard Features

## Exterior

**Eagle Cap Exclusive** – “Aerodynamic Two-Tone One-Piece Insulated Fiberglass Front Cap” – **EC MAX PKG**

**Eagle Cap Exclusive** - “All Season quad exterior sealing process”

**Eagle Cap Exclusive** - Frameless Windows providing you that high end luxury coach look – **EC MAX PKG**

**Eagle Cap Exclusive** - Super Step® Aluminum step bumper with single 36” folding step

**Eagle Cap Exclusive** - Slam Latch Exterior Compartment Doors – Common keyed

**Eagle Cap Exclusive -ALP Exclusive TCC® Construction** – superior strength, construction and a 3 yr structural warranty

**Eagle Cap Exclusive** - Interior Mood Lighting

**ALP Exclusive** – Front Camper Guides

**ALP Exclusive** – Twenty-Six inch “Friction Hinge” entry door with HD screen door

**NEW** – Simulated Padded Ceiling

Schwintek Electric Slide-out mechanisms—lower amp draw, smoother operation and a better integrated slide seal system.

Detachable 30-amp 110V power cord

New Generation Happi-Jac Wireless remote electric Jacks

High gloss gel-coat fiberglass exterior

LED exterior lighting

2” TCC® laminated walls, floors and 3” roof with R-13, R-22 and R-19 insulation factor - **EC MAX PKG**

4-Season insulated storage compartment doors – **EC MAX PKG**

Frameless 4-Season gas-filled thermal pane tinted windows – **EC MAX PKG**

One-piece seamless TPO (Thermal Poly Olefin) insulated roof with 2 R-Value and a 12-year manufacturer warranty- **EC MAX PKG**

Abundant exterior basement storage - (1. Rear entry models, 2. Side entry models) →

Exterior sewer hose carrier

Diamond Plate Risers

Phat® Ladder

Awning Slide-Topper

## Interior, Galley, Electrical

AM/FM/CD/DVD/MP3/**Blue tooth** w/two exterior speakers

Solid granite coat counter tops with large **molded double bowl sink**

**NEW** – Pullout galley faucet

Systems Control Center - one location for all monitors, entry and security switches.

USB Charging Port - charge all of your popular electronics

Digital HD “Concealed” interior mount TV antenna – no TV antenna on the roof, better reception

**Eagle Cap Exclusive** - **Modular Dinette Furniture - Interchangeable with options like Sofa, Theater Seating etc.** (n/a 1200) ↘

Dream Dinette – no annoying table leg in the way – easily converts into a bed with the flip of a lever

30,000 BTU Thermostatically controlled forced air furnace w/ducted heat– **EC MAX PKG**

Dometic **Seven-Cubic Foot** double door refrigerator (Eight Cubic Foot on 1160/1165/1200)

Sealed three-burner cooktop - easier to clean and no fire hazard from food droppings.

Hardwood cabinet doors and face frames

Sink cover cutting board

Residential Designer No-wax industrial grade flooring

All wood full extension drawers with ball-bearing metal guides

Night shades for all windows (mini blind in kitchen to meet code)

**NEW** - Pillow Top Inner coil Spring Mattress

**Quiet Revolution** water pump by Shurflo

LED interior and exterior lighting for minimal battery draw

45-amp electronic power converter with “Smart” battery charger

12V battery disconnect switch

Automatic changeover LPG regulator

Fantastic Fan – 3 Speed

Microwave

## Safety

Fire Extinguisher, LPG, Smoke, Carbon Monoxide and Smoke detectors

Emergency cabover egress

Custom keyed deadbolt entry lock unique to your unit - Safer more secure

Brighter and safer LED Porch, tail, clearance and back-up lights

110V GFI-protected outlets

Large folding entry assist handle

Flame-treated fabric upholstery



# Special Features & Options



## Eagle Cap Exclusive – Modular Dinette Furniture... (n/a 1200).

An exciting feature on Eagle Caps truck campers are the Modular Dinette furniture. The dinette seating is now a modular design, meaning the seat cushion sections are designed to work as a face to face dinette or as a u-shaped dinette. To make into a u-shaped dinette you simply remove the table, add the modular insert and the u-shaped “D” style table and now you have a u-shaped dinette. Best of all our engineering department designed the dinette areas so that our sofa or our optional Theater Seating or our new 1200 Free Standing table & chairs will fit into this same area simply by unscrewing the dinette modular sections, remove the table and install one of the above options. Want something other than that in your dinette area? Order without the dinette and add what ever you wish, desk, bunk beds you name it! EAGLE CAP Built Like None Other!



## Eagle Cap's 12V ELECTRIC REAR AWNING w/LED Lights...

Enjoy the outdoors with Eagle Cap's (optional) electric rear awning. With just a touch of a button you can open or close your awning, no more need for two people and with the built-in gas props it handles rainy and windy conditions reducing your typical cause of awning damage. Note the patio box awnings also shown here as another popular option available from Eagle Cap.



## Interior LED Mood Lighting... Enjoy

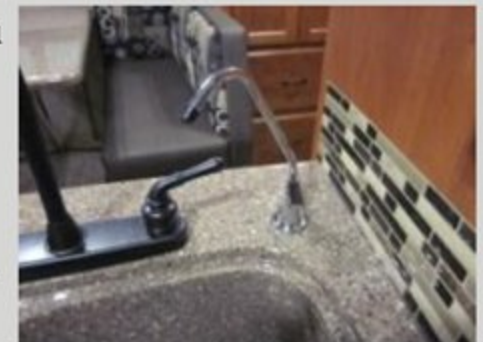
the ambiance in your Eagle Cap with the standard interior mood lighting. Turn it on for that romantic evening in or as a night light. Either way it is Cool!



**100% LED Lighting...** Eagle Cap gives you 100% LED lighting from the awning to the refer! Led lighting has 8 to 10 times less power draw allowing you to use less power making your camping enjoyment last longer...



**Water Filter System with separate faucet...** Clean filtered drinking water no longer a worry with the optional water filter system available on all models.



**Eagle Cap 13,500 Low-Profile A/C...** See the difference between a std A/C (in the distance) and the Eagle Cap 13,500 (HE high efficiency) Low-Profile A/C in this photo, significantly reducing your exterior height.



## 12V / USB Charging Center...

The world is changing, we have more electronics, gadgets and toys and we have provided a charging center in your camper. We added a Charging Center not just a 12v power outlet but it also includes two USB ports for direct USB charging along with a 12v outlet.

## Eagle Cap Exclusive - Slam Latches on all Exterior Compartment doors...

Eagle Cap truck campers have “Slam Latches”... it's name says it all, drop the door and it “slams” shut or you can simply gently press it shut for an easy one handed close. The best part of the new slam latches is the ease of opening, simply lift up the single lever handle with one hand and open your compartment door. This makes it easier to load and unload leaving one hand open to carry your items with out having to set them down to open the door.

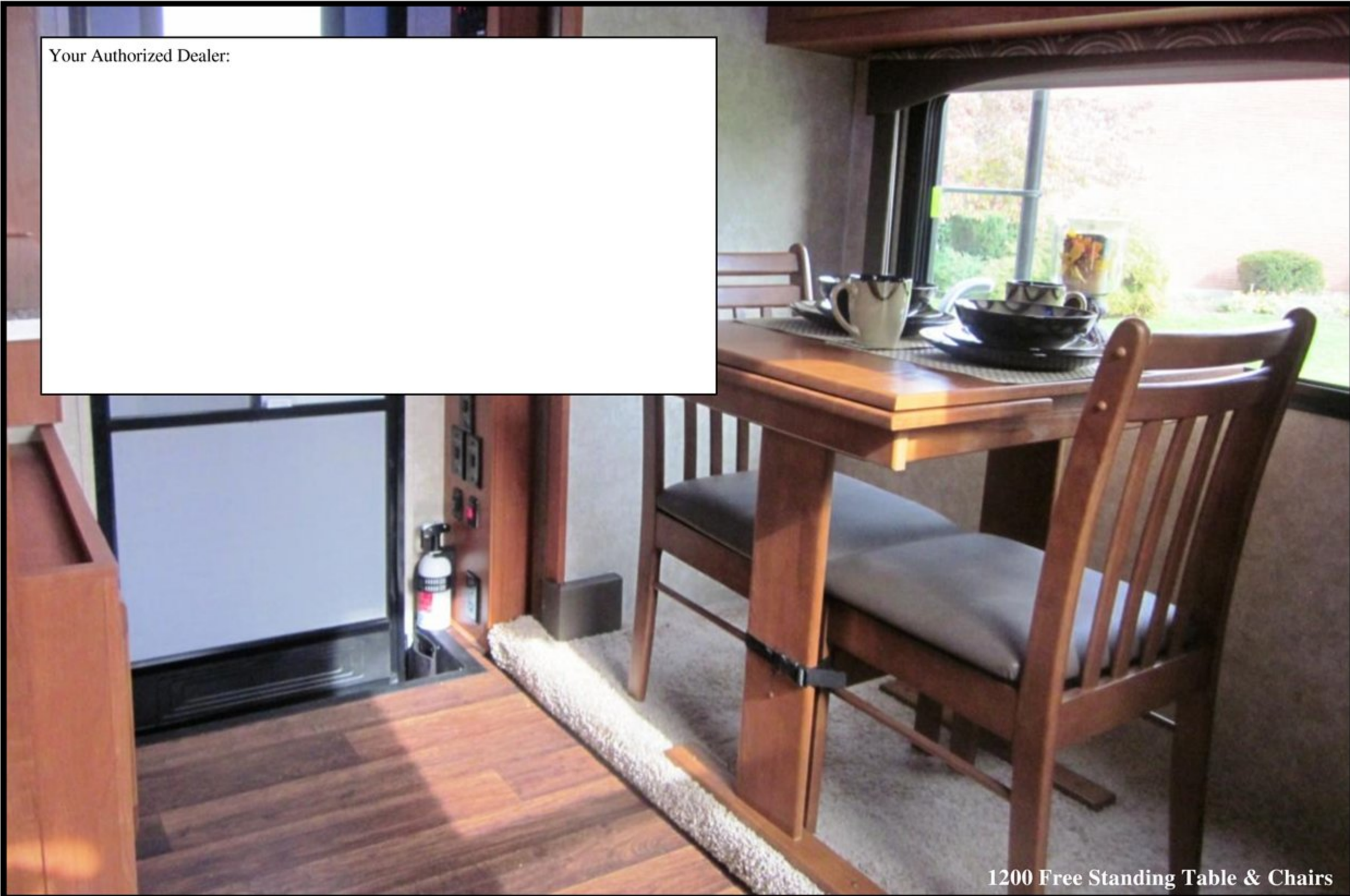
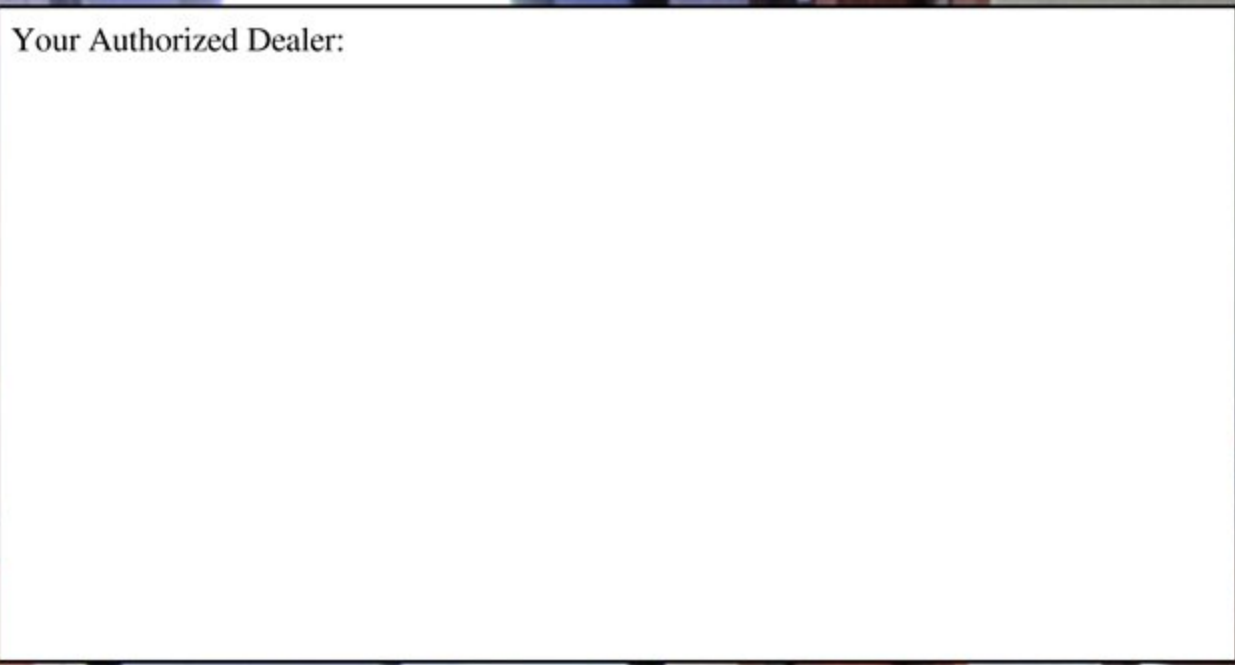


**Winegard Digital HD – Concealed Interior Mount TV Antenna...** Less holes in the roof and better reception can be a great thing, right? We have added, as a Standard Feature, our new TV antenna. It is an interior/concealed mounted antenna and the best news is it gets dramatically better reception in our testing! Simply put, our previous TV antenna inside of our metal R&D building would only receive three very fuzzy weak channels that you wouldn't want to watch. This new flat panel TV Antenna in our testing received 32 crystal clear, free digital channels, in the same building and the antenna was mounted inside of the camper, in fact in testing we even stuffed it completely under the mattress and we still received all 32 channels. Best of all, as you can see here, it can be totally mounted behind a wall, concealed and one less item on the roof.



**BUILD YOUR OWN CAMPER ON OUR WEBSITE AT - AMLRV.com**

Your Authorized Dealer:



1200 Free Standing Table & Chairs

## Interior Decor Choices

Infinity

Stone

Pewter



### Eagle Cap

Adventurer LP (ALP)  
3303 West Washington Ave  
Yakima, WA 98903  
PH: 509-895-7064

[www.AMLRV.com](http://www.AMLRV.com)



### Factory Tours

We invite you to visit our manufacturing facility located in beautiful Yakima, WA. During your tour you will see Eagle Cap Truck Campers being assembled with tremendous skill and pride. Tours are available by appointment.

*A Premium RV Manufacturer since 1969 - [www.AMLRV.com](http://www.AMLRV.com)*