

EXPEDITION®

EXPEDITION®



2016

CLASS A DIESEL



Surround yourself in the comforts of Expedition.





In a hectic world, isn't it good to know an island of solace yet remains? Let Expedition lead you down the road of relaxation with its thoughtful amenities, comfortable interior and all-around beauty.

#### Expedition Top Features

- 360HP Cummins® ISB 6.7L Engine
- TV & A/V Electronics
- 8.0 kW Onan® Quiet Diesel Generator
- Double-Roller Shades
- Solid-Surface Countertops
- Crown Molding
- Large Porcelain Hand-Laid Tile
- Molded Fiberglass Roof
- Chrome Mirrors w/Side View Cameras
- Frameless Flush Mount Windows
- Power Awning w/LED Light Strip
- 10,000 lb. Hitch Rating
- Powerlock System™ w/Interlocking Floors, Walls & Ceiling
- Powerframes™ Precision Welding w/5-Point Build System
- F-21 Construction & Manufacturing Technology
- Freightliner® XC-M Chassis
- Power Bridge® Chassis

Go to [FleetwoodRV.com](http://FleetwoodRV.com) and build your own Expedition!



Platinum Luxe



Shadow Cove



Tuscany Sun

Both inside and out, there is a wide selection of colors, styles and finishes. From the moment you lay your eyes on an Expedition, the high-style graphics and décor collection welcome you with gracious beauty and contemporary design. We've paid attention to every detail. So wherever you are, you'll feel right at home.

PLATNIUM LUXE						CABINETRY
SOFA	ACCENT	BEDSPREAD	COUNTERTOP	FLOORING	CARPET	BARCELONA
TUSCANY SUN						BUTTERNUT
SOFA	ACCENT	BEDSPREAD	COUNTERTOP	FLOORING	CARPET	
WISP OF WILLOW						BUTTERNUT
SOFA	ACCENT	BEDSPREAD	COUNTERTOP	FLOORING	CARPET	

## INTERIOR THROUGHOUT

- 20,000/25,000 Btu/h Dual Furnaces (38B)
- 20,000/30,000 Btu/h Dual Furnaces (40X)
- 25,000/34,000 Btu/h Dual Furnaces (38S, 38K)
- 84" Interior Ceiling Height
- Crown Molding
- Dedicated Full-Length, Metallic A/C Ducting
- Deluxe Roller Bearing, Full-Extension Drawer Guides & Transit-Ship Locks
- Demand Water Pump w/Filter
- Dual Roof-Mounted, High-Efficiency A/C w/Solar Panel, Chill Grills & Bedroom Heat Pump
- Fan-Tastic® Power Roof Vent w/Wall Switch
- Flat Interior Ceiling
- Hardwood Cabinet Doors/Drawers
- Manual Day/Night Double Roller Shades
- Power Passenger Chair w/Power Footrest
- Solid-Surface Entry-Step w/LED Accent Lights
- Tuff-Pex™ Plumbing System
- Wall Sconces (Living Area)
- Wall Switches (Includes Switches for Ceiling Lights & Vents)
- Water Heater 16-Gallon Output
- Water Heater Bypass
- Whole Coach Water Filtration System
- Winegard® Stationary DSS System
- Wood Finish Return Air Intake for Furnace

### Optional

- Central Vacuum System
- CSA Package (Canadian Specs)\*\*
- Satellite Radio (Subscription Required)

## DRIVER CONVENIENCE

- (2) 12V Power Outlets at Dash
- 110V Power Outlet at Dash
- 3-Point Seatbelts at Driver & Front Passenger Seats (w/Adjustable Shoulder Straps)
- Automotive Wrap-Around Dash
- Auxiliary Start Circuit
- Battery Disconnect System
- Color Back-Up Monitor w/Side Cameras Integrated in Mirrors
- Cruise Control
- Denso® High-Output Auto A/C Heater Combo
- Driver/Front Passenger Soft-Touch Captain's Chairs w/Reclining Back/Slide Controls w/Power Driver Seat
- Dual Dash Monitors
- Easy-Access Battery Disconnect Switch
- Front Power Roller Shades/Blinds
- Intermittent Wiper Control
- Power Driver & Passenger Roller Shades/Blinds
- Remote Heated Power Exterior Chrome Mirrors w/Turn Signals & Sideview Cameras
- Radio Switch Main/Auxiliary Power
- Radio w/AM, FM, CD & DVD
- Soft-Touch Automotive Dash
- Tilt/Telescoping Steering Wheel
- Touch Screen Radio w/Built-In GPS

## LIVING ROOM

- Custom Fit (by Villa®) Residential Seat Styling
- 50" LED HDTV (38S, 40X)
- Sony® 5.1 Home Theater System w/Blu-ray/DVD & Surround Sound Speakers
- 42" LED HDTV (38B, 38K)
- TV Antenna w/Signal Booster
- Wall-to-Wall Porcelain Flooring
- Facing Dinette (38B, 40X)
- L-Shaped Transformer Sofa (40X)
- 32" LED HDTV in Front Overhead
- Villa® Ultraleather Transformer Sofa w/Incliners & Manual Footrests (38S)
- U-Shaped Dinette/Sofa (38B, 38K, 40X)

### Optional

- Electric Fireplace (38K)

## GALLEY

- 3-Burner, High-Output Cooktop w/Sealed Burners w/Cooktop Cover
- 19 cu. ft. Residential Refrigerator w/Two Additional Batteries & 2800 Watt Inverter
- Adjustable Cabinet Shelves (Select Cabinets)
- Dinette Base Cabinet with Freestanding Chairs
- Fan-Tastic® Power Roof Vent w/Wall Switch
- GE 1 cu.ft. Convection Stainless Steel Microwave Oven w/Built-in Range Hood & Lights
- Single-Handle Galley Faucet w/Pullout Sprayer
- Solid-Surface Backsplash w/Mosaic Glass Tiles
- Solid-Surface Countertop w/Sink Covers
- Solid-Surface Dinette Table
- Under-Galley Shelving & Wastebasket
- Window Over Sink

### Optional

- 3-Burner, High-Output Cooktop w/Sealed Burners & Oven

## BEDROOM

- Bedsprad w/Decorative Pillows
- King Exclusive Dream Easy Series w/Adjustable Head Section (38K, 38S)
- King Dream Easy Memory Foam Mattress (40X)
- Overhead Cabinets
- Plush Wall-to-Wall Carpet w/Carpet Pad in Bedroom (38B, 40X)
- Queen Dream Easy Memory Foam Mattress (38B)
- Remote Generator Start Switch

- 32" LED HDTV
- Wardrobe Lighting
- Wardrobe w/Cedar Lining, Carpeted Floor

### Optional

- Desk w/Chair (38B)
- Dual Wardrobe (38B)
- King Air Mattress (38S, 38K, 40X)
- Queen Air Mattress (38B)
- Stackable Washer & Dryer

## BATHROOM

- A/C Venting
- Cabinet Toe Kicks
- Decorative Backsplash
- Fan-Tastic® Power Roof Vent w/Wall Switch
- Glass Shower Enclosure w/Skylight & Low Threshold
- LED Lighting Over Sink
- Hardwood Bath Door/Trims
- Porcelain Toilet w/Water Saver
- Porcelain Vacuum Flush Toilet (38S, 38K)
- Single-Handle Faucet

## SAFETY/CONVENIENCE (INTERIOR)

- 30" Wide Entry Door
- Carbon Monoxide Detector/Alarm
- Central Electrical Panel
- Energy Management System (EMS) w/Soft-Start
- Fire Extinguisher
- Multiple Seatbelt Locations
- Neutral Loss Protection
- Propane Detector/Alarm
- Smoke Detector/Alarm

## EXTERIOR THROUGHOUT

- 120V/12V AC/DC Converter
- 2,800-Watt Pure Sine Wave Inverter w/Remote
- 50-Amp Service
- 8.0 kW Onan® Quiet Diesel Generator
- Aluminum Bus-Style Side Swing Luggage Doors
- Aluminum Extruded Slide Ramps
- Awning Rail/Drip Molding (Both Sides)
- Full-Body Paint
- Doorside Patio Receptacle
- Dryseal™ Edge Coating (Water-Wicking Wall Edge Coating)
- Exterior Entertainment Center w/32" LED HDTV & High Output, Splashproof AM/FM/DVD Sound System

## EXTERIOR THROUGHOUT

- Fiberglass Front/Rear Caps w/High-Mounted Taillights
- Fiberglass Wheel-Well Trims
- Five-Point Build System™
- Frameless Flush Mount Windows
- Heat Pump in Bedroom A/C
- Molded Fiberglass Roof
- Power Awning w/LED Light Strip & Wind Sensor React
- Power Cord Reel
- Seamless Beltline Trim
- Rear Ladder
- Tapered Slideout Box Tops & Debris Awnings
- Water Pump Switch (Multiple Locations)

### Optional

- 1st Full Bay 36"/54" Slide Trays
- 1st Full Bay 90" Slide Tray
- 2nd Full Bay 54 Slide Trays (38B, 38K)
- 3rd Roof A/C (40X)
- Clear Protective Front Mask
- Rear Rockguard
- Remote Keyless Entry
- Window Awning Package

## AUTOMOTIVE

- Aluminum Wheels
- Color Rear & Side-Vision Camera System
- Fog Lamps
- Large One-Piece Bonded-in Windshield
- Mud Flaps
- Single-Motor Windshield Wipers w/Wet Arm
- Underhood Utility Light

## SAFETY/CONVENIENCE (EXTERIOR)

- 20' Sewer Hose
- 4-Wheel ABS Brakes
- Automatic Generator Start System
- Automatic Hydraulic Leveling Jacks
- Automotive Safety Glass
- Daytime Running Lights
- Easy-Sweep Flooring at Entry Step
- Entry Door w/Screen Door & Deadbolt Lock
- Lighted Entry Assist Handle
- Power Entry Step
- Rear Side Marker Lights
- Six 6V/Deep-Cycle House Batteries
- Toilet Tank San-T-Flush™ System
- Touch Sensor Tank Monitoring System
- Utility Compartment w/Exterior Shower

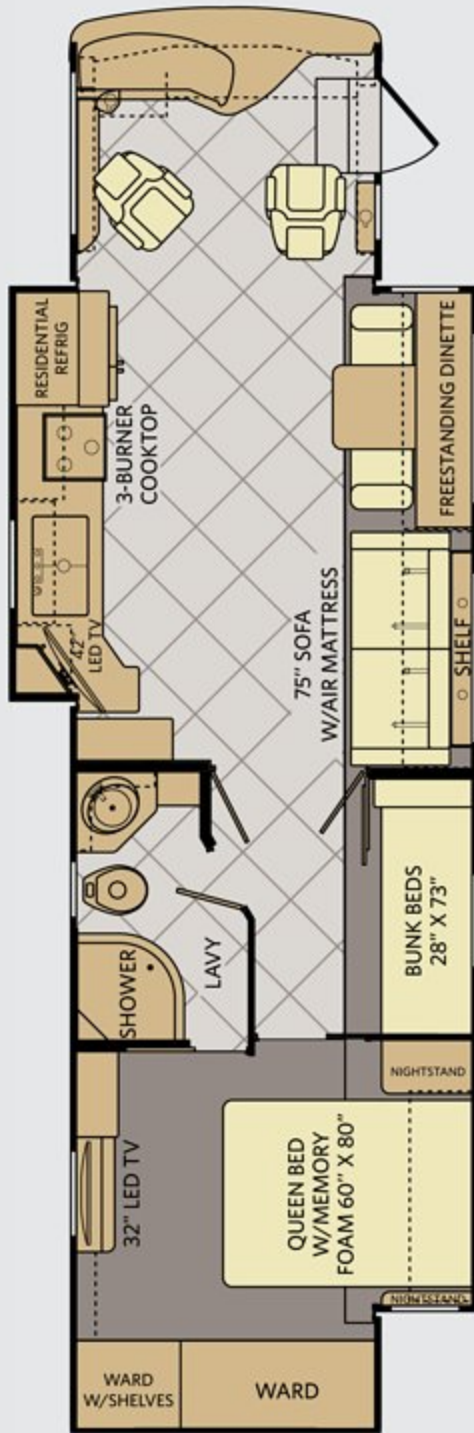
## STORAGE

- Continuous One-Piece Compartment Seals
- Lighted Compartments
- Pass-Through Storage

## BODY STRUCTURE

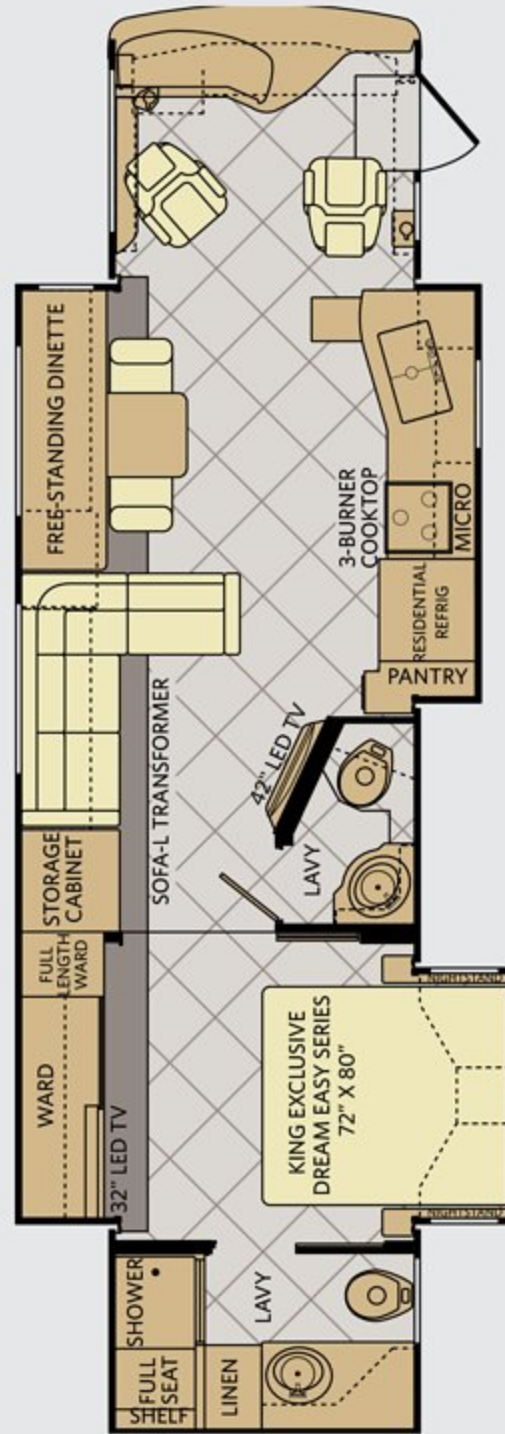
- Basement Storage
- Heated Water & Holding Tank Compartments
- Molded Fiberglass Roof
- Power Bridge® Chassis Construction
- Powerframes™ Precision, Welded Aluminum Interlocking Frames
- Powerlock System™ (Interlocking Floors, Walls, & Ceiling)
- Quiet Cool Ducted A/C
- Radiused & Cambered Entry Door
- Raised Space Frame Foundation
- Solid Bead-Foam Engineered Fit Insulation™

# Expedition Floor Plans



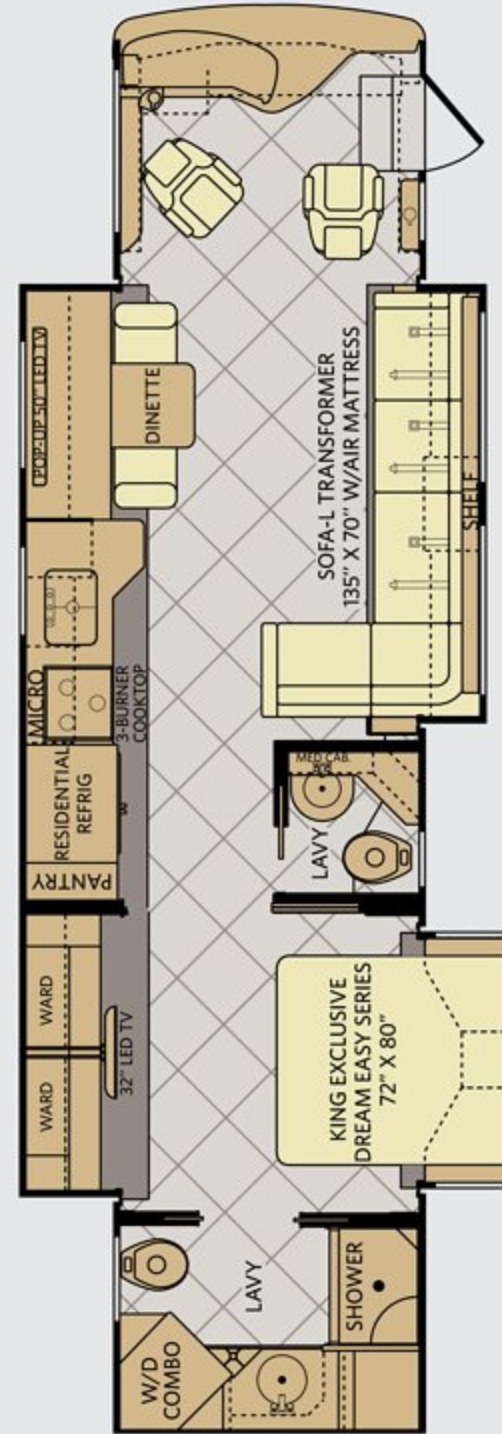
**38B**

Available options: 087, 113, 131, 635, 830, 855, 878, 883



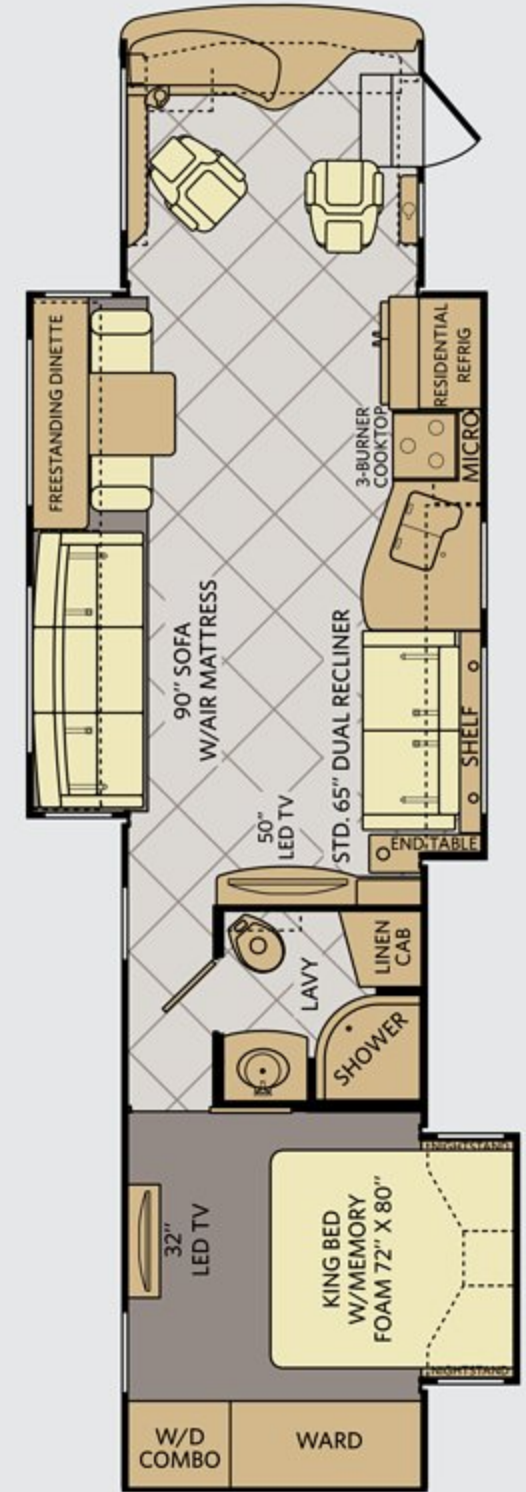
**38K**

Available options: 087, 113, 131, 139, 635



**38S**

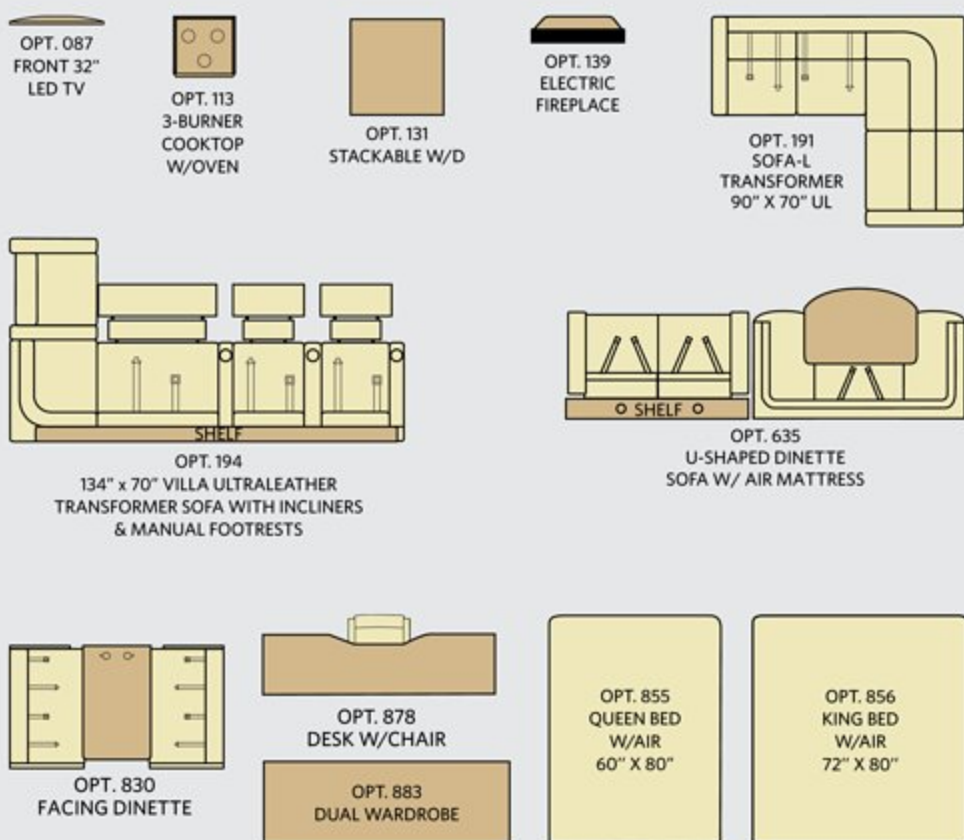
Available options: 087, 113, 131, 194



**40X**

Available options: 087, 113, 131, 191, 635, 830, 856

## FLOOR PLAN OPTIONS



### DISCLAIMERS

- GVWR (Gross Vehicle Weight Rating) is the maximum permissible weight of this fully loaded motor home. The GVWR is equal to or greater than the sum of the (UVW) unloaded vehicle weight plus the (OCCC) occupant cargo-carrying capacity.\*
  - GAWR (Gross Axle Weight Rating) is the maximum permissible loaded weight a specific axle is designed to carry.
  - GCWR (Gross Combined Weight Rating) is the value specified by the motor home manufacturer as the maximum allowable loaded weight of this motor home with its towed vehicle. Towing and braking capacities may be different. Refer to Fleetwood and chassis manufacturer's manuals for complete information.
  - Length measured from front bumper to rear bumper (excludes accessories).
  - Excludes safety equipment and awnings.
  - Motor homes feature a body width over 96" which will restrict your access to certain roads. Before purchasing, you should research any state and/or province road laws which may affect your usage.
  - Tank manufacturer's listed water capacity (WC). Actual propane capacity is 80% of water listing as required by the safety code.
- † The chassis manufacturer recommends the installation of a supplemental brake control system to activate the brakes on the vehicle or trailer you are towing. Hitch receiver ratings expressed are maximum for the hitch receiver installed and may require the purchase of additional equipment that is dependent on the weight of the towed load. Consult with hitch receiver manufacturer for further information.
- \* UVW and OCCC are found on the label containing the federal certification tag in each RV.

### MODELS

	38B	38K	38S	40X
Wheelbase (inches)	252"	252"	252"	276"
GVWR (lbs) <sup>1</sup>	32,400	32,400	32,400	32,400
Front GAWR (lbs) <sup>2</sup>	12,400	12,400	12,400	12,400
Rear GAWR (lbs) <sup>2</sup>	20,000	20,000	20,000	20,000
GCWR (lbs) <sup>3</sup>	42,400	42,400	42,400	42,400
Hitch Rating Weight (lbs) <sup>†</sup>	10,000	10,000	10,000	10,000
Tongue Weight (lbs) <sup>†</sup>	1,000	1,000	1,000	1,000
Fuel Capacity (gal)	100	100	100	100

### POWER BRIDGE® CHASSIS

**Model:** Freightliner® XCM Series

**Engine:** Cummins® ISB 6.7L

**Transmission:** Allison® 3000 MH 6-Speed w/Electronic Shifter

**Alternator:** Delco Remy 160 Amp

**Torque:** 800 lb-ft @ 1,800 RPM

**Horsepower:** 360HP

## DIMENSIONS & CAPACITIES

MODELS	38B	38K	38S	40X
Overall Length (inches) <sup>4</sup>	38' 7.5"	38' 7.5"	38' 7.5"	41' 7."
Overall Height (suspension inflated)	12' 10"	12' 10"	12' 10"	12' 10"
Overall Width (maximum) <sup>5,6</sup>	102"	102"	102"	102"
Interior Height (maximum)	84"	84"	84"	84"
Interior Width (maximum)	96"	96"	96"	96"
Patio Awning Width	19' 6"	10' 8"	11'	14' 6"
Interior Storage (cu. ft.)	217	138	138	197
Exterior Storage (cu. ft.)	181	224	112	208
Fresh Water Holding Tank (gal)	105	105	105	105
Grey Water Holding Tank (gal)	75	75	75	75
Black Water Holding Tank (gal)	50	50	50	50
Appliance Propane Tank (gal) (WC) <sup>7</sup>	38.7	38.7	38.7	38.7
Water Heater Tank (gal)	10	10	10	10



## WHY FLEETWOOD?



### Quality

There's no cutting corners. Skilled craftsmen build every Fleetwood RV for maximum durability and longevity.



### Trust

More people trust Fleetwood RV. After all, we've spent over 60 years perfecting motorhomes, earning the loyalty of generations of RVers.



### Passion

We're truly passionate about the RV lifestyle. Fleetwood RV was founded by RV enthusiasts, and that tradition continues today.



### Safety

You've got precious cargo. So we've engineered dozens of innovative safety features into our motorhomes to give you more peace of mind.



### Service

Help is nearby with 24/7 emergency Fleetwood RV Trusted Roadside Assistance\*. And when you need an upgrade or repair, you'll find Fleetwood RV dealers all across North America ready to assist you.



### Warranty

Exclusive RV OwnerCare\*\* warranty. See your Fleetwood RV dealer for details.

\*All 2016 Fleetwood RV Motorhomes include a 1-year emergency roadside assistance membership. For complete info, see your Fleetwood RV dealer.

ALLIED RECREATION GROUP.



Visit [FleetwoodRV.com](http://FleetwoodRV.com).



### RV OWNERCARE\*\*

Limited one-year/15,000-mile coach warranty and three-year/45,000-mile structural warranty, whichever occurs first, and it is fully transferable for the first 12 months. RV OWNERCARE is one of the RV industry's most comprehensive programs and includes systems, appliances, components and construction, with no deductible and no service charge. RV OWNERCARE coverage is provided by a company that will be around in the future to service your needs. See your nearest Fleetwood RV dealer for a full explanation of benefits and restrictions.

### FLEETWOOD MOTORHOME ASSOCIATION

As a Fleetwood RV owner, you're invited to become a member of the Fleetwood Motorhome Association (FMA). Becoming a member is the perfect way to meet other Fleetwood owners who love to travel across America and share in the RV lifestyle. Visit the FMA website at [www.fma4fun.org](http://www.fma4fun.org) to learn more and join the fun.

### CONTACT US

To locate a dealer near you, visit our website at [www.fleetwoodrv.com](http://www.fleetwoodrv.com) or call 1-800-322-8216. We can also be contacted at Fleetwood RV Customer Relations, P.O. Box 1007, Decatur, IN 46733.

**IMPORTANT—PLEASE READ:** Product information, photography and illustrations included in this publication were as accurate as possible at the time of printing. For further product information and changes, please visit our website at [www.fleetwoodrv.com](http://www.fleetwoodrv.com) or contact your local Fleetwood RV dealer. Prices, materials, design and specifications are subject to change without notice. All weights, fuel, liquid capacities and dimensions are approximate. Fleetwood RV has designed its recreational vehicles to provide a variety of uses for its customers. Each vehicle features optimal seating, sleeping, storage and fluid capacities. The user is responsible for selecting the proper combination of loads (i.e., occupants, equipment, fluids, cargo, etc.) to ensure that the vehicle's capacities are not exceeded.

### YOUR LOCAL FLEETWOOD RV DEALER IS: